

Polar 5J Internal pictures



CONFIDENTIAL

4 August 2022



Figure 1. Whole device

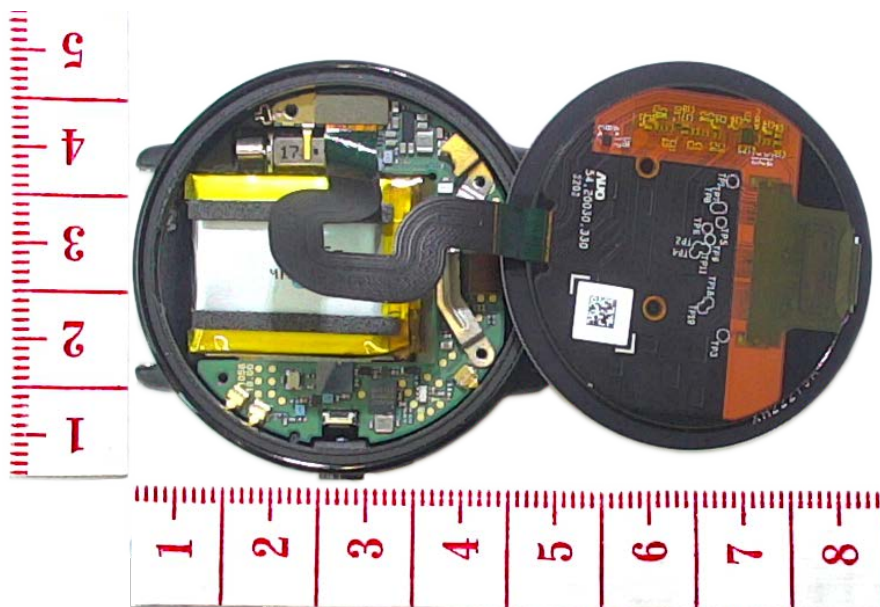


Figure 2. The display module separated.



CONFIDENTIAL

4 August 2022

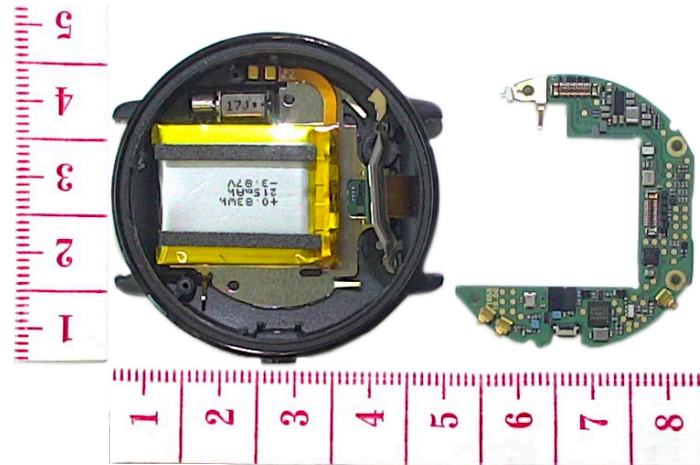


Figure 3. The main PWB removed.

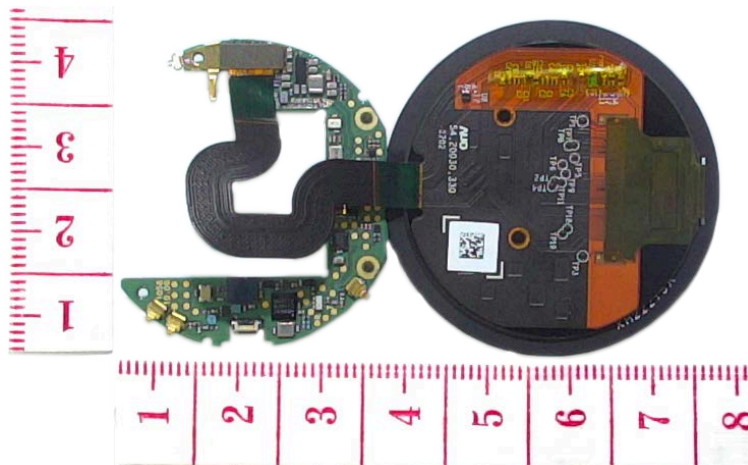


Figure 4. The display module and main PWB connected.

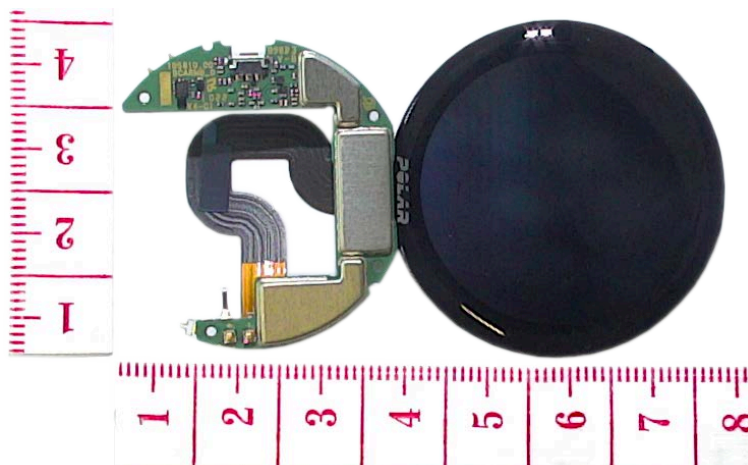


Figure 5. The display module from the other side.



CONFIDENTIAL

4 August 2022

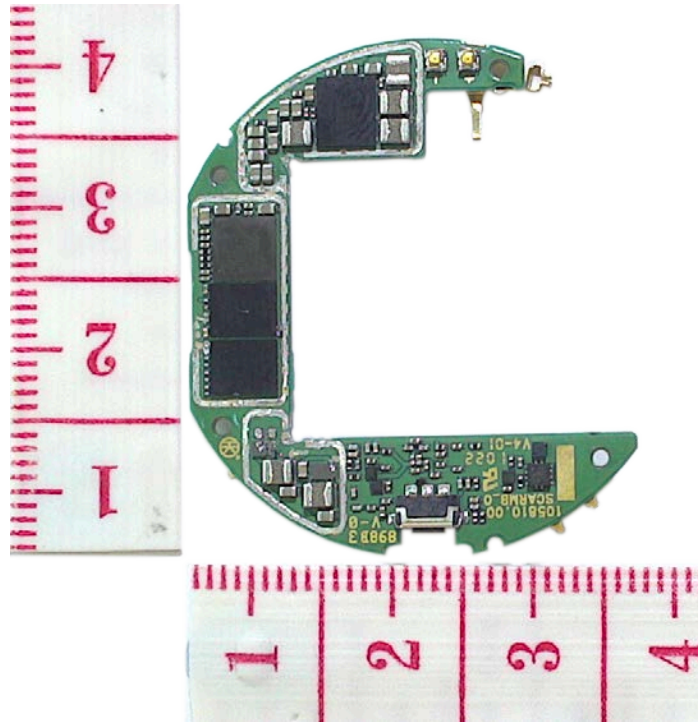


Figure 6. PWB shield removed.

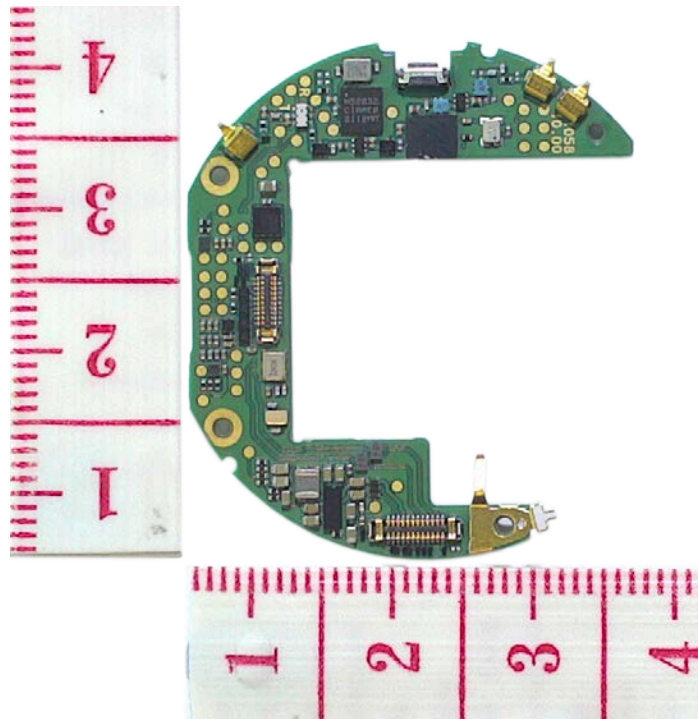


Figure 7. The main PWB from the other side.



CONFIDENTIAL

4 August 2022

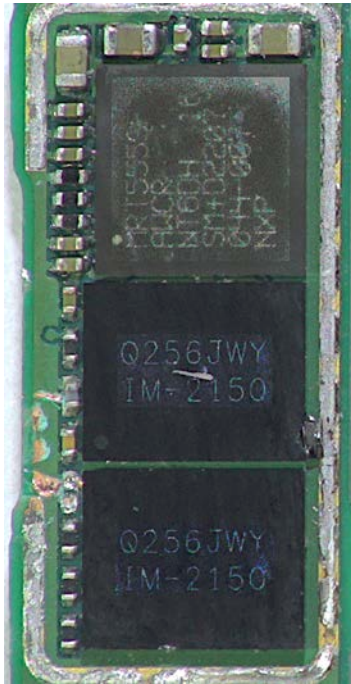


Figure 8.1. Existing component markings

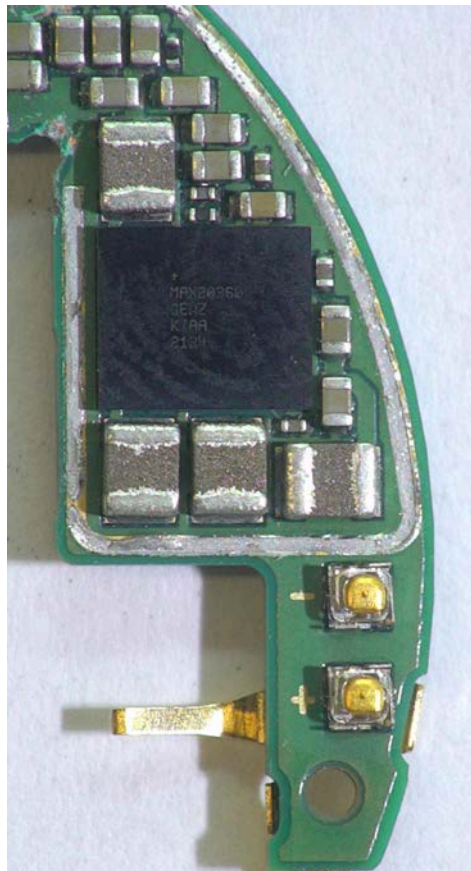


Figure 8.2. Existing component markings



CONFIDENTIAL

4 August 2022

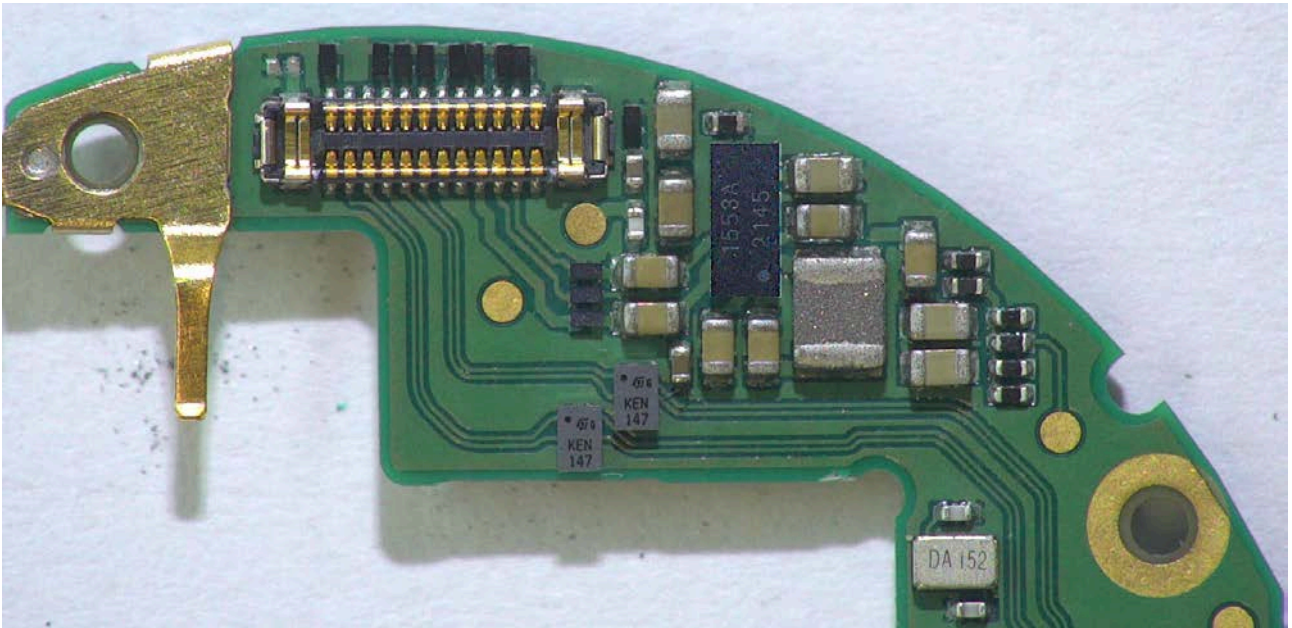


Figure 8.3. Existing component markings

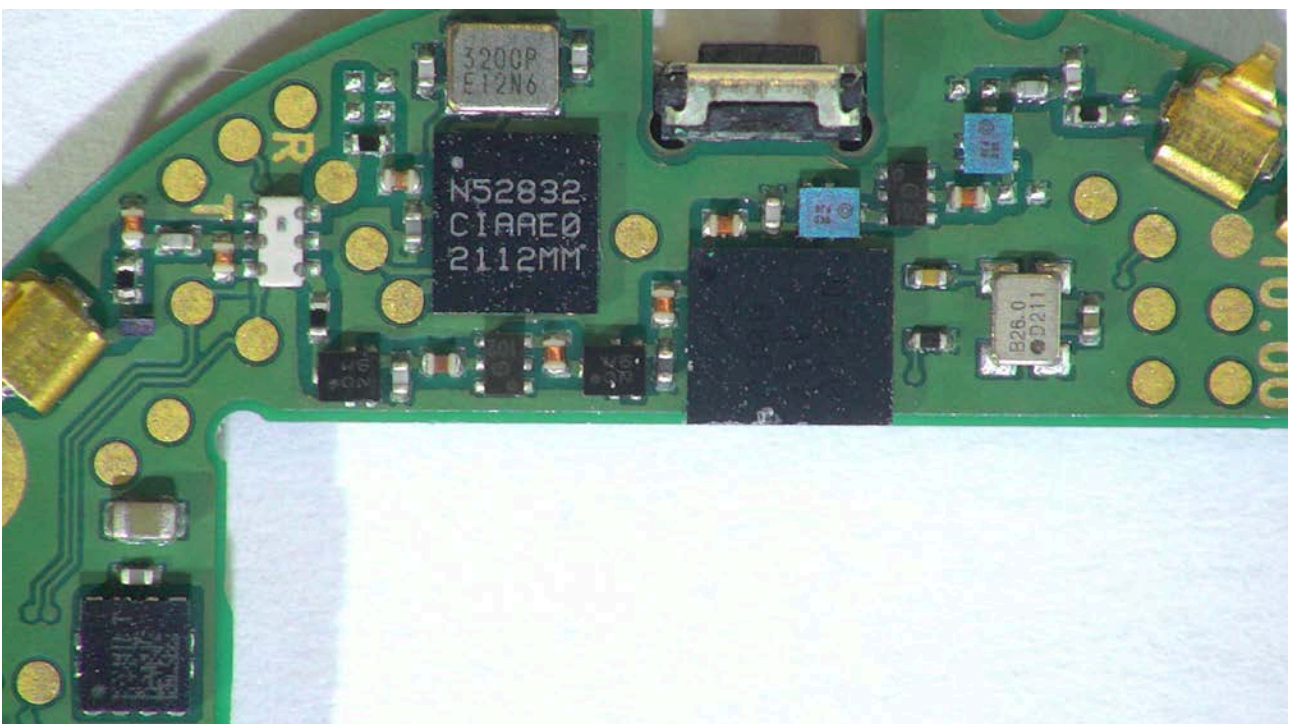


Figure 8.4. Existing component markings



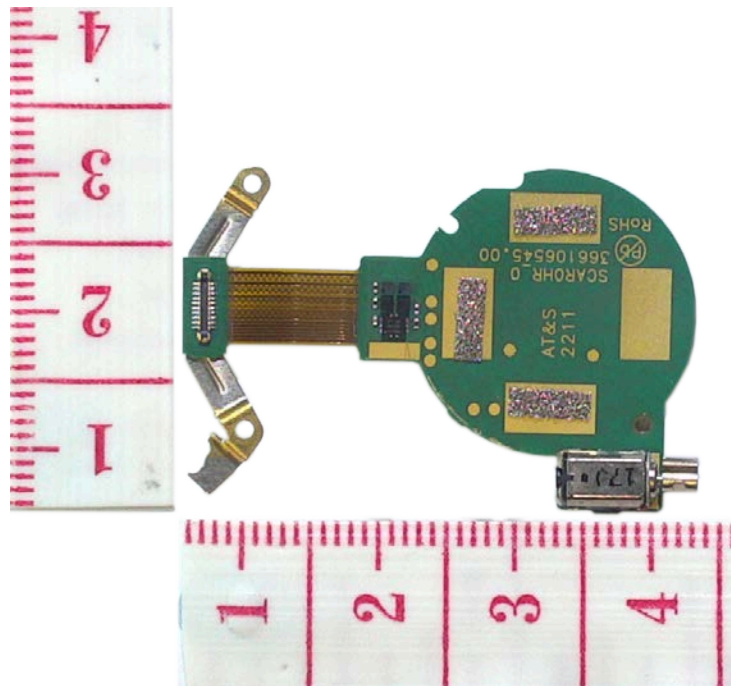


Figure 9. OHR PWB from component side

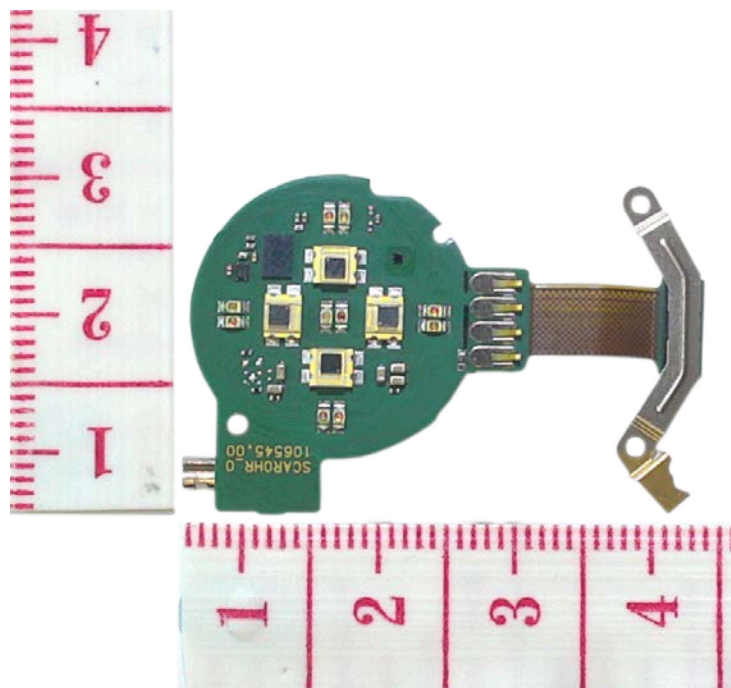


Figure 10. OHR PWB from LED side

