

Polar OHR Sensor Internal Pictures, Model 4J



CONFIDENTIAL

19 November 2020

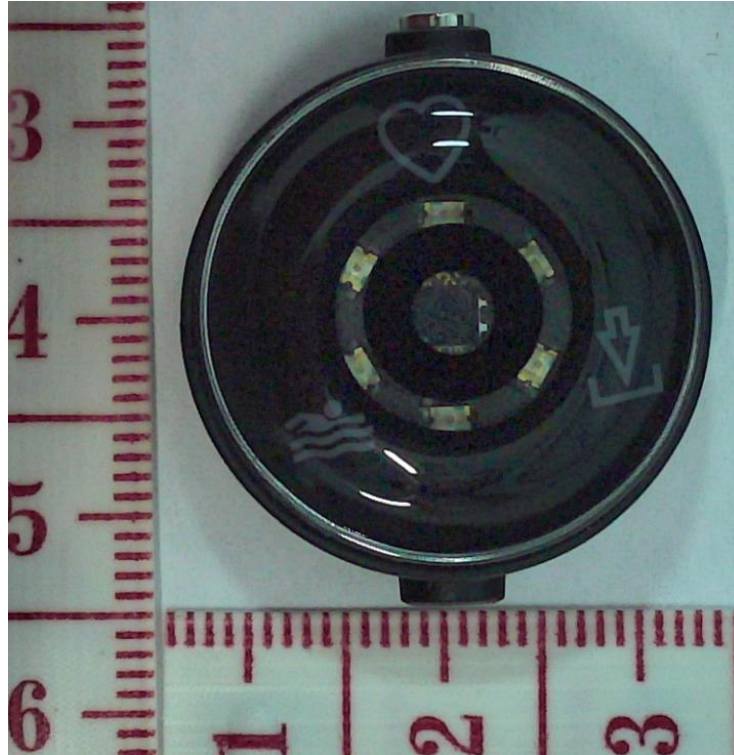


Figure 1. The whole device.



Figure 2. The lens removed.



CONFIDENTIAL

19 November 2020

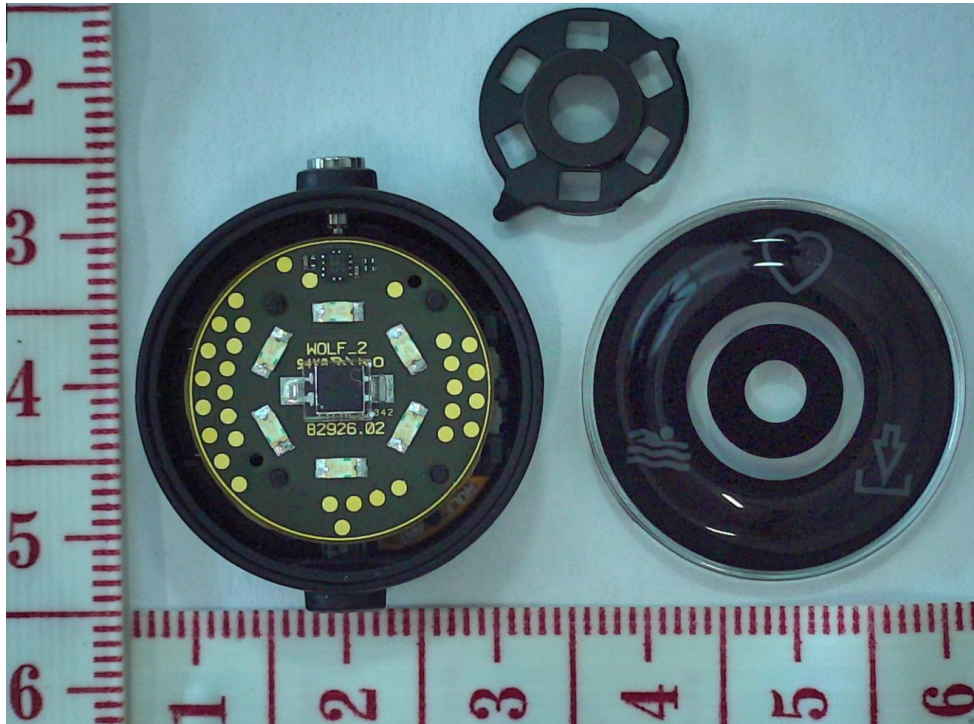


Figure 3. The lens and the frame removed.

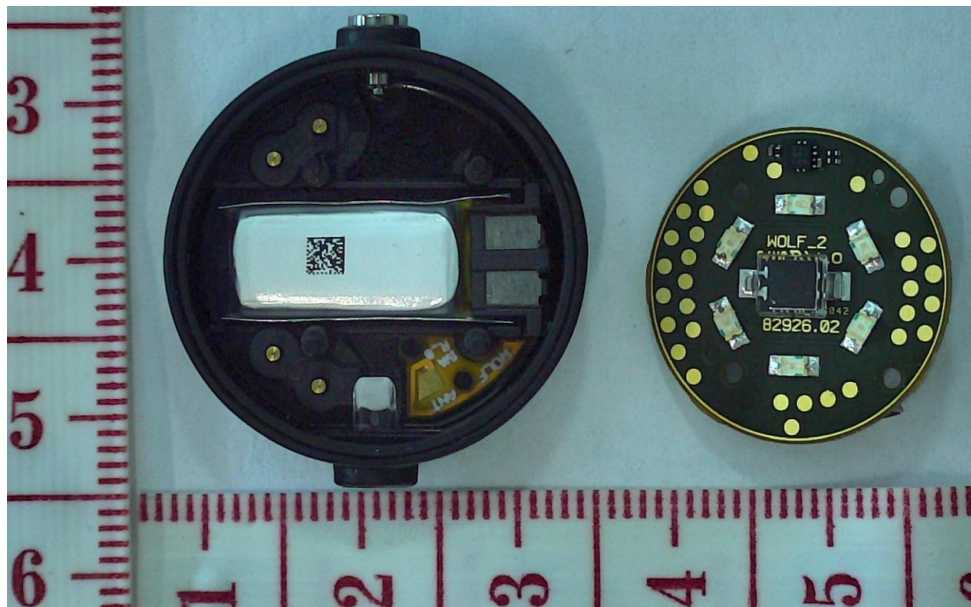


Figure 4. The PWB removed.



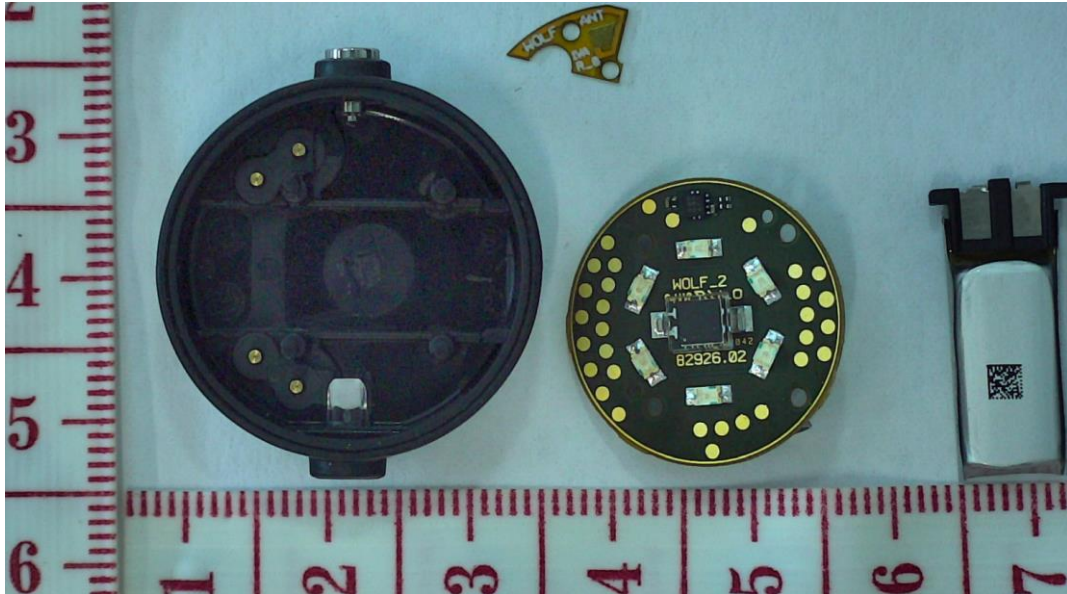


Figure 5. The battery and the antenna removed. The USB connectors visible inside the enclosure.

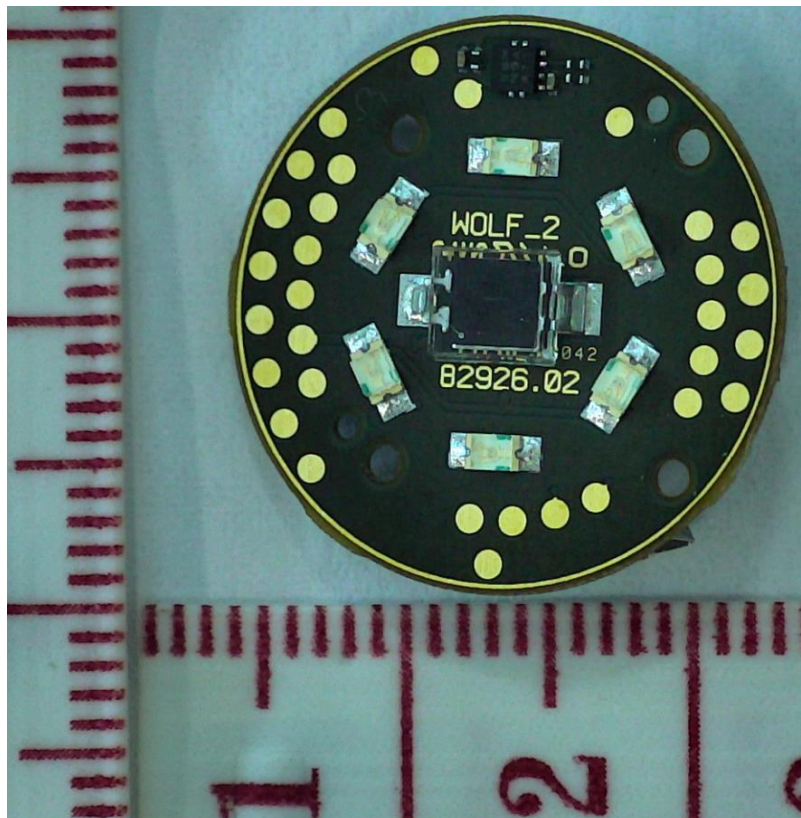


Figure 6. The PWB from the LED side.



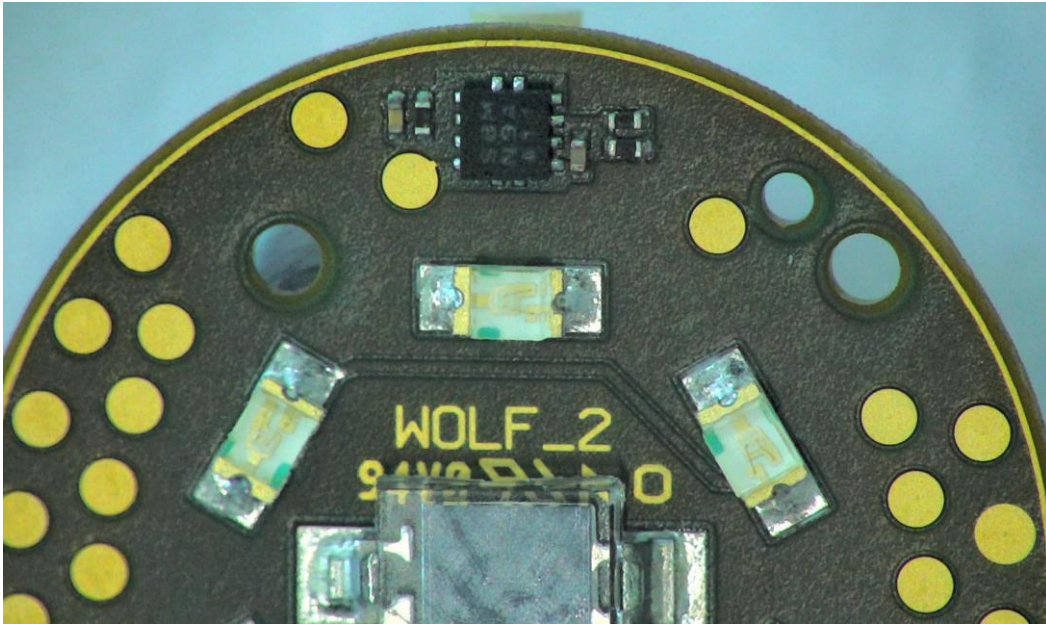


Figure 7. Existing component markings.

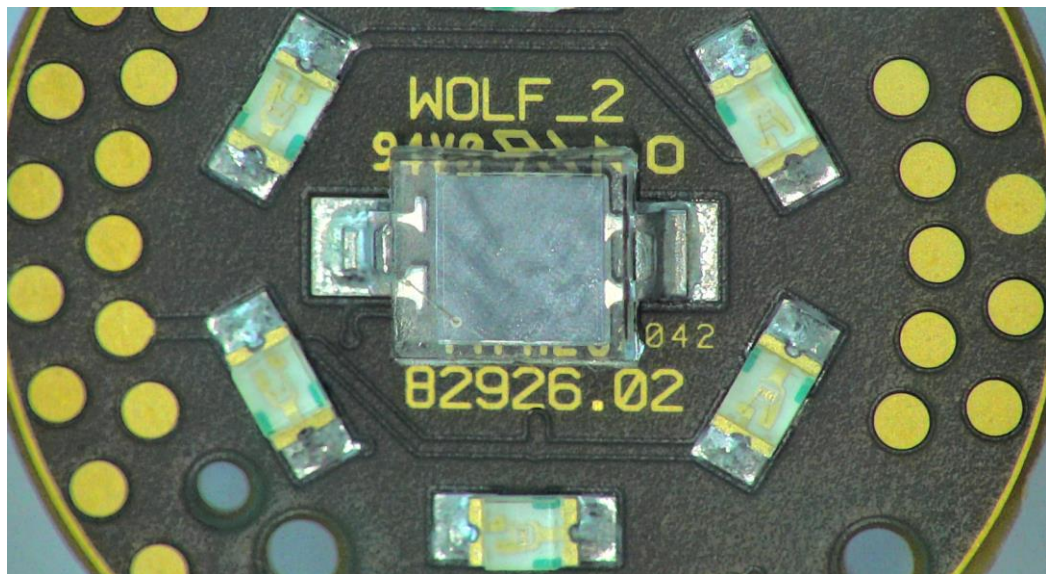


Figure 8.LEDs.



CONFIDENTIAL

19 November 2020

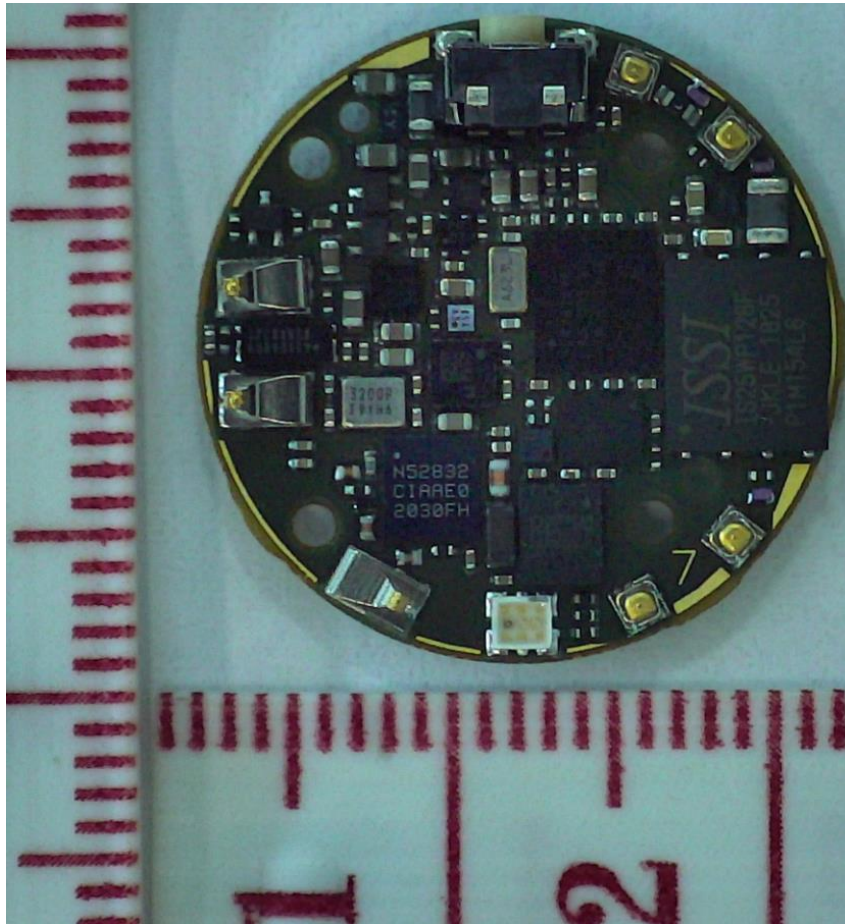


Figure 9. The PWB from component side.

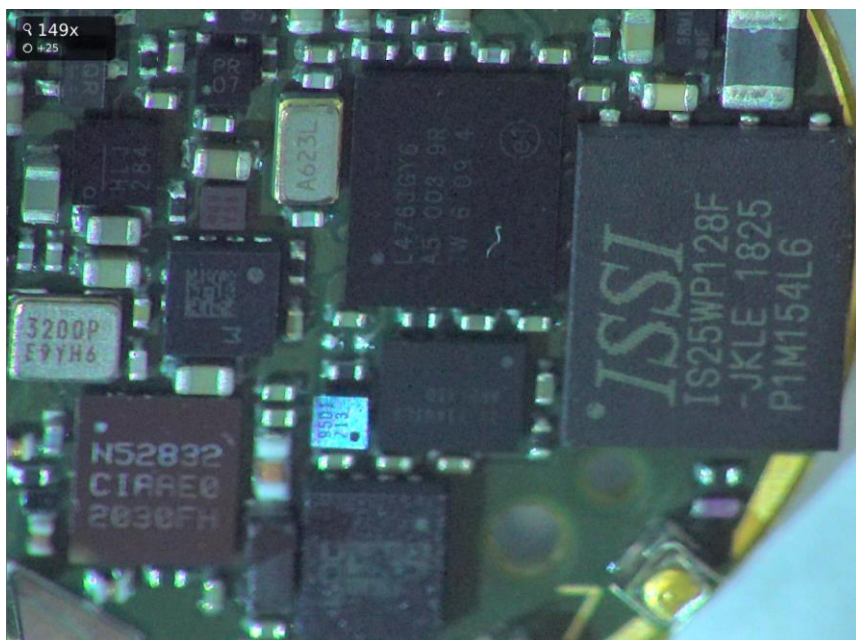


Figure 10. Existing components markings visible.



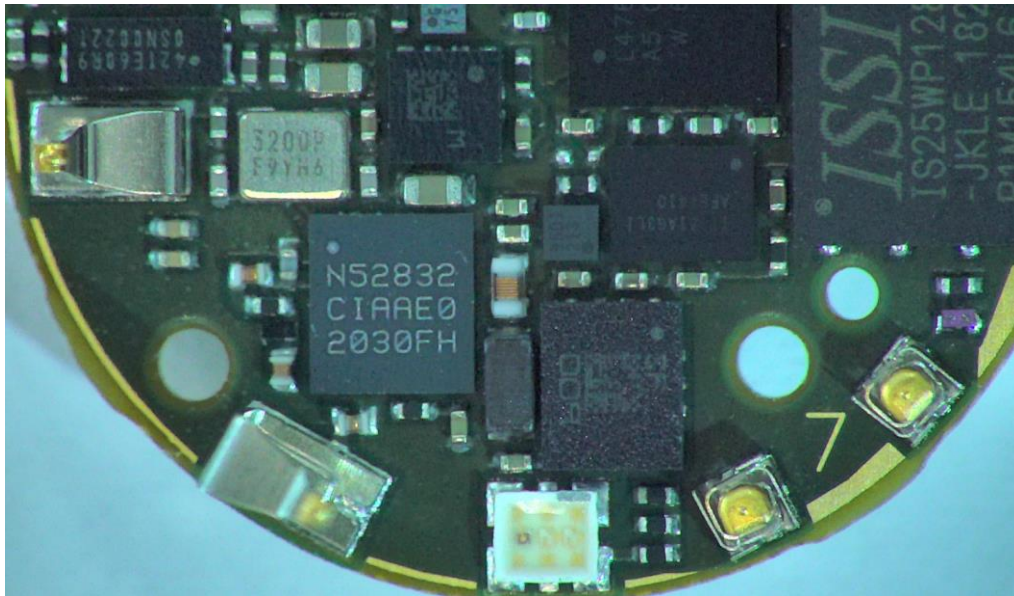


Figure 11. Existing components markings visible.

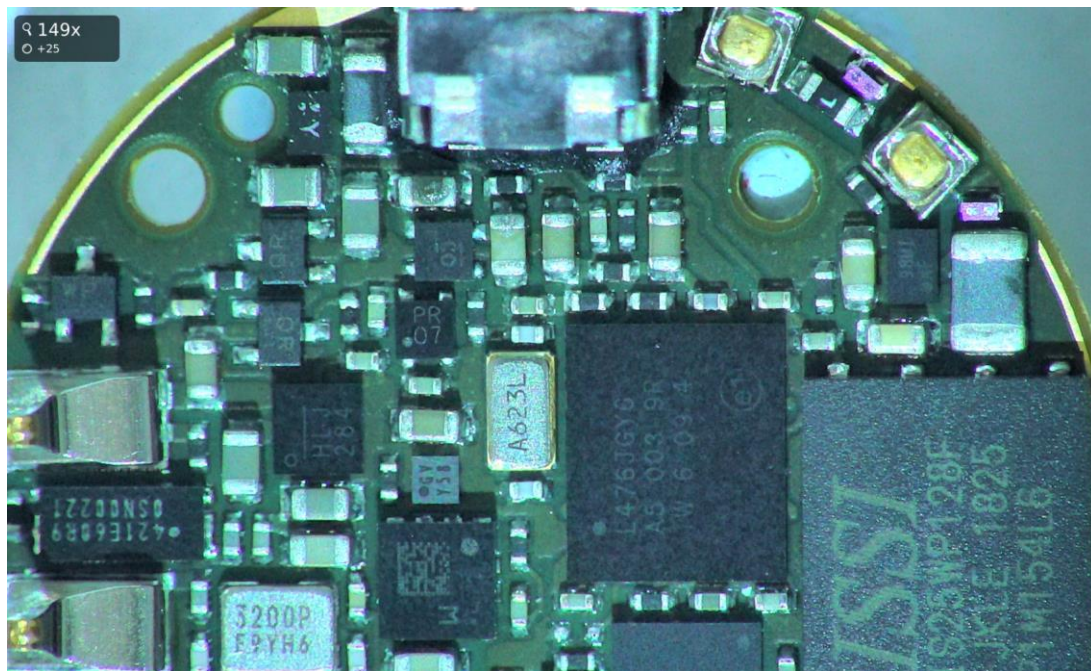


Figure 12. Existing components markings visible.

