

Polar 4B Internal pictures



CONFIDENTIAL

30 March 2020



Figure 1. Whole device

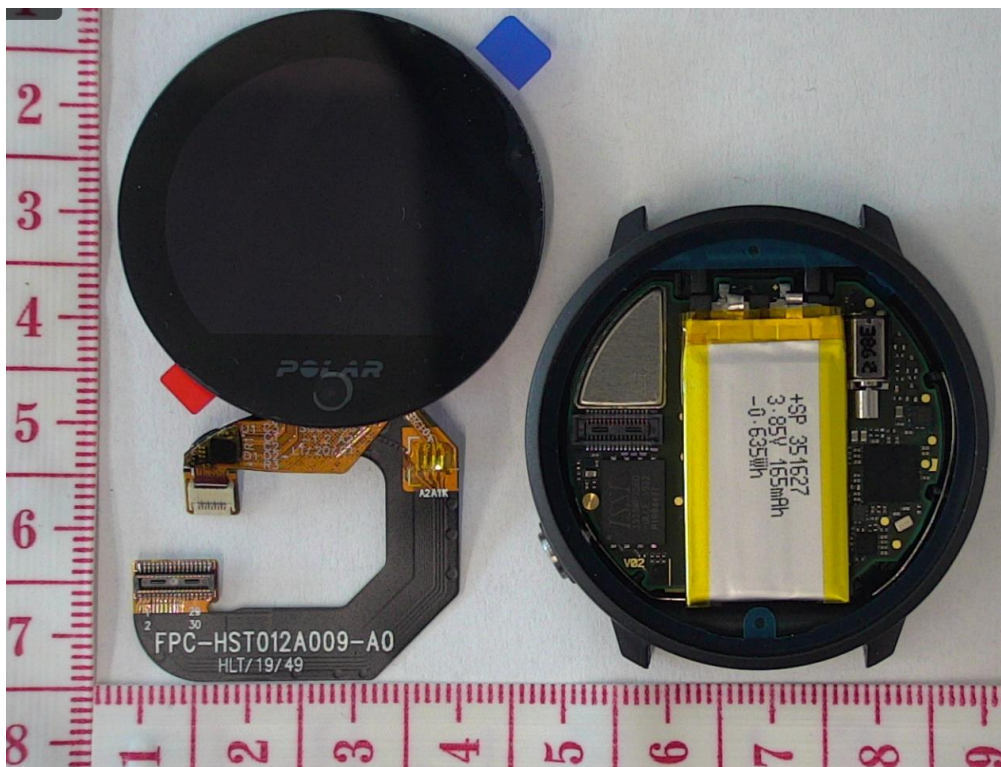


Figure 2. The display module separated.



CONFIDENTIAL

30 March 2020

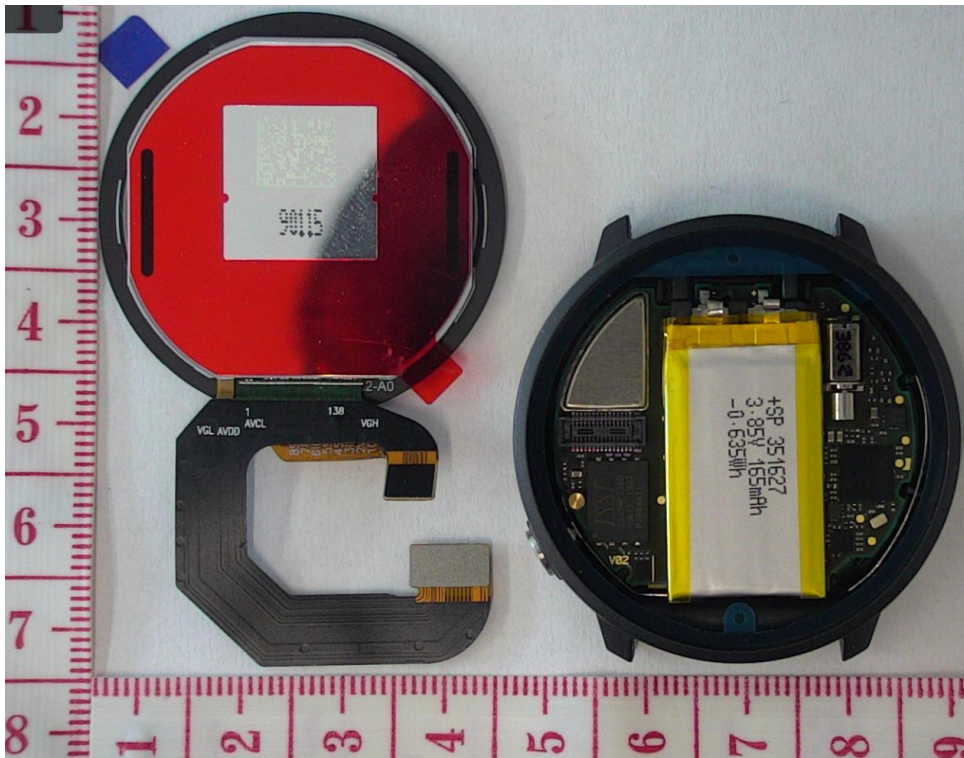


Figure 3. The display module from the other side.

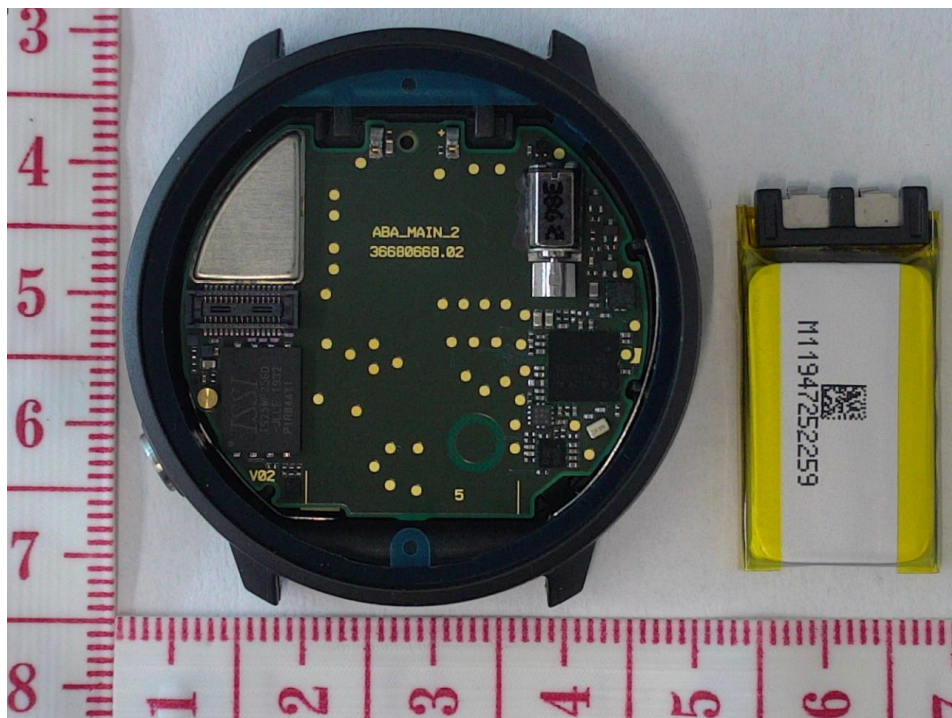


Figure 4. Battery separated from the PWB.



CONFIDENTIAL

30 March 2020

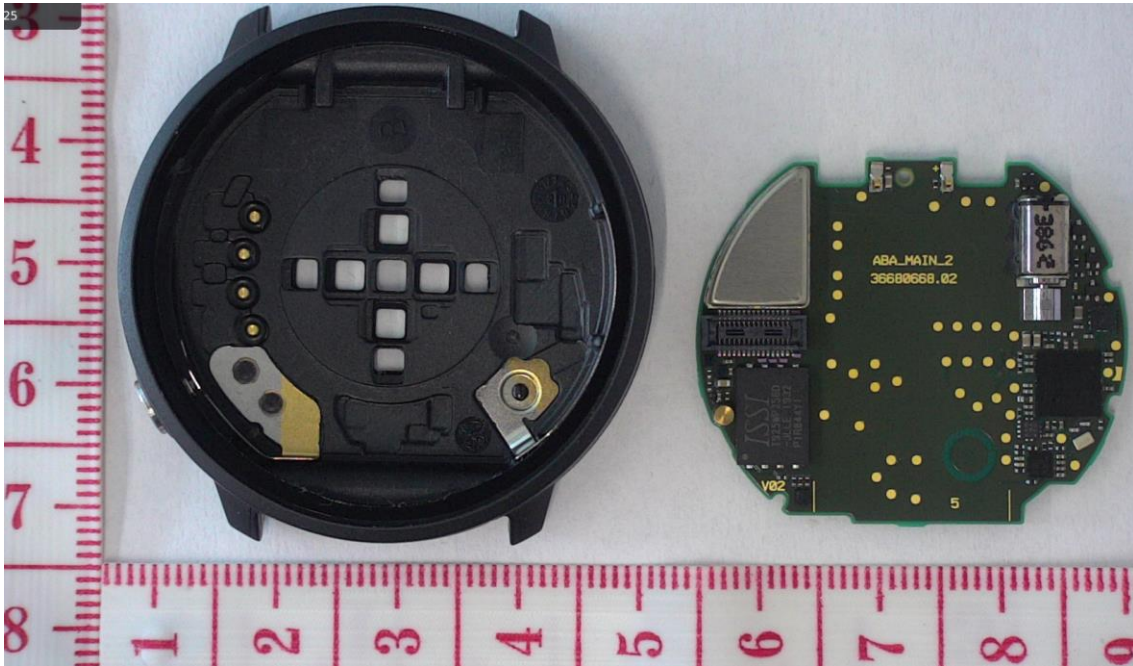


Figure 5. PWB removed from B.case.

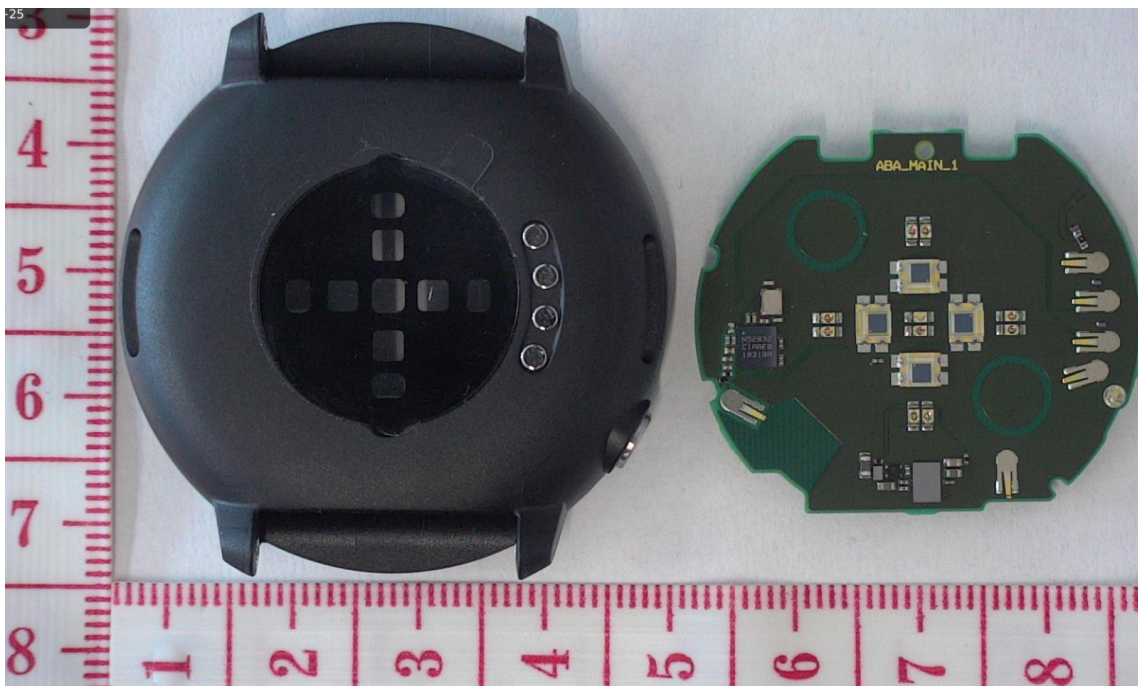


Figure 6. B.case and PWB from the other side.

POLAR®

CONFIDENTIAL

30 March 2020

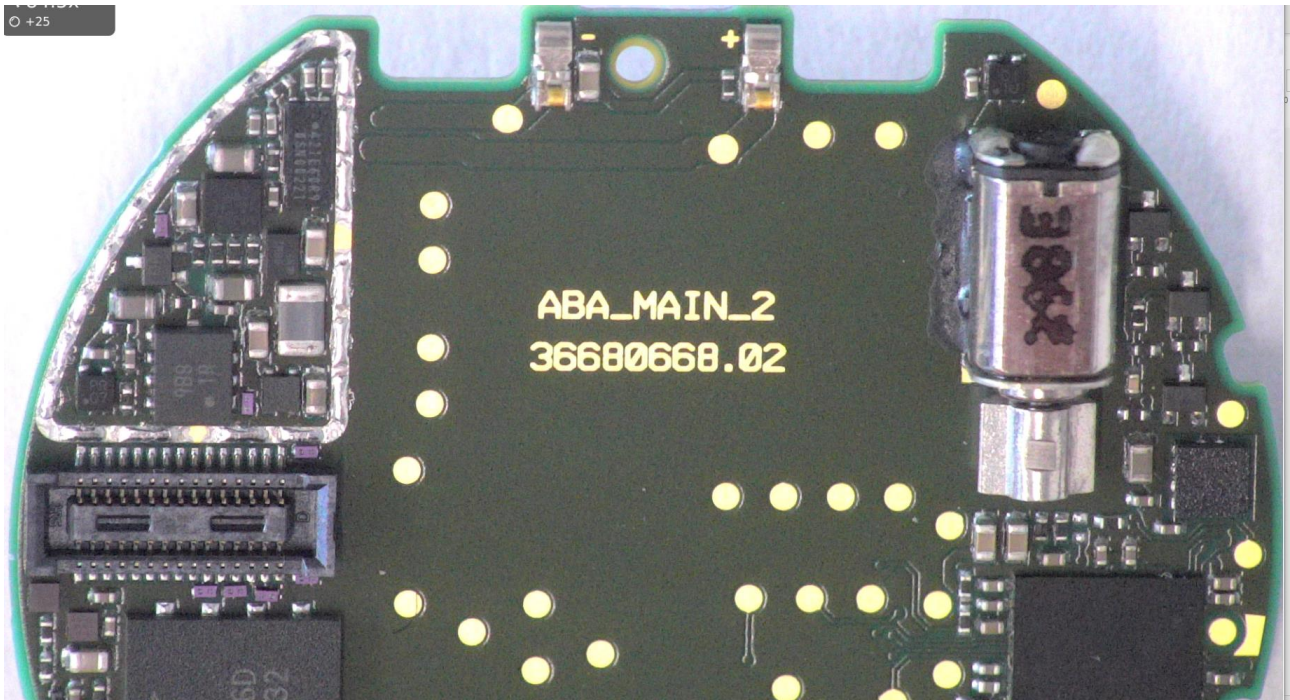


Figure 7. PWB shield removed.

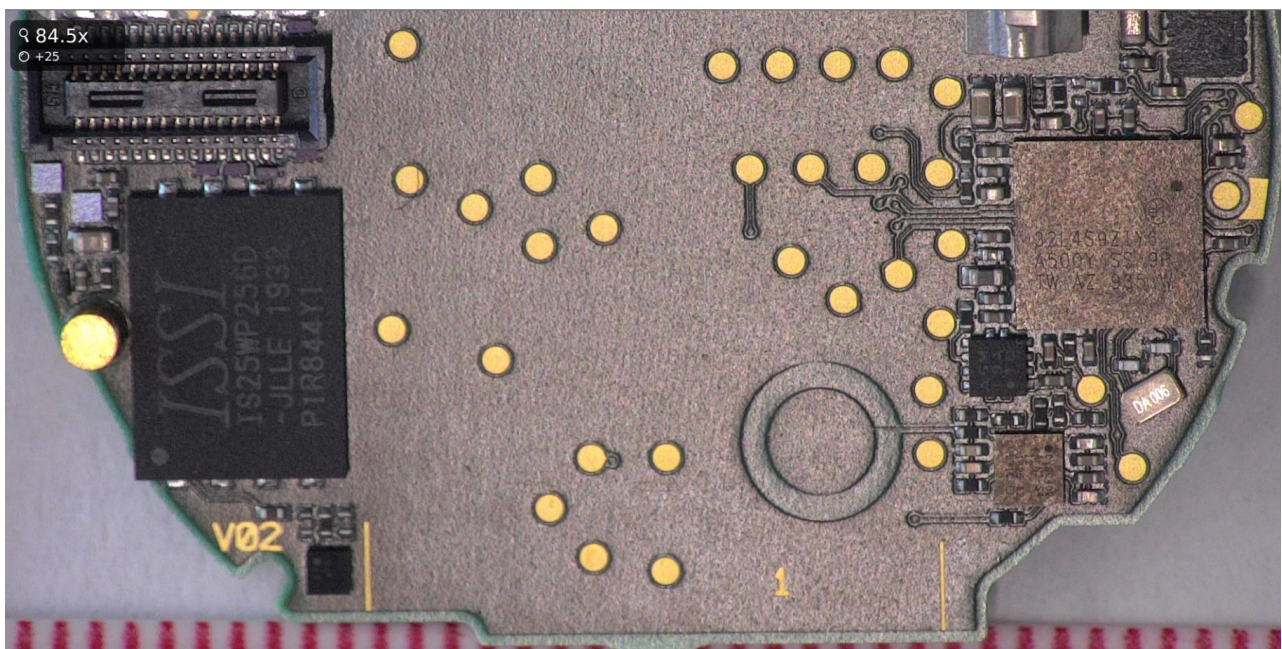


Figure 8. The other part of the PWB.



CONFIDENTIAL

30 March 2020

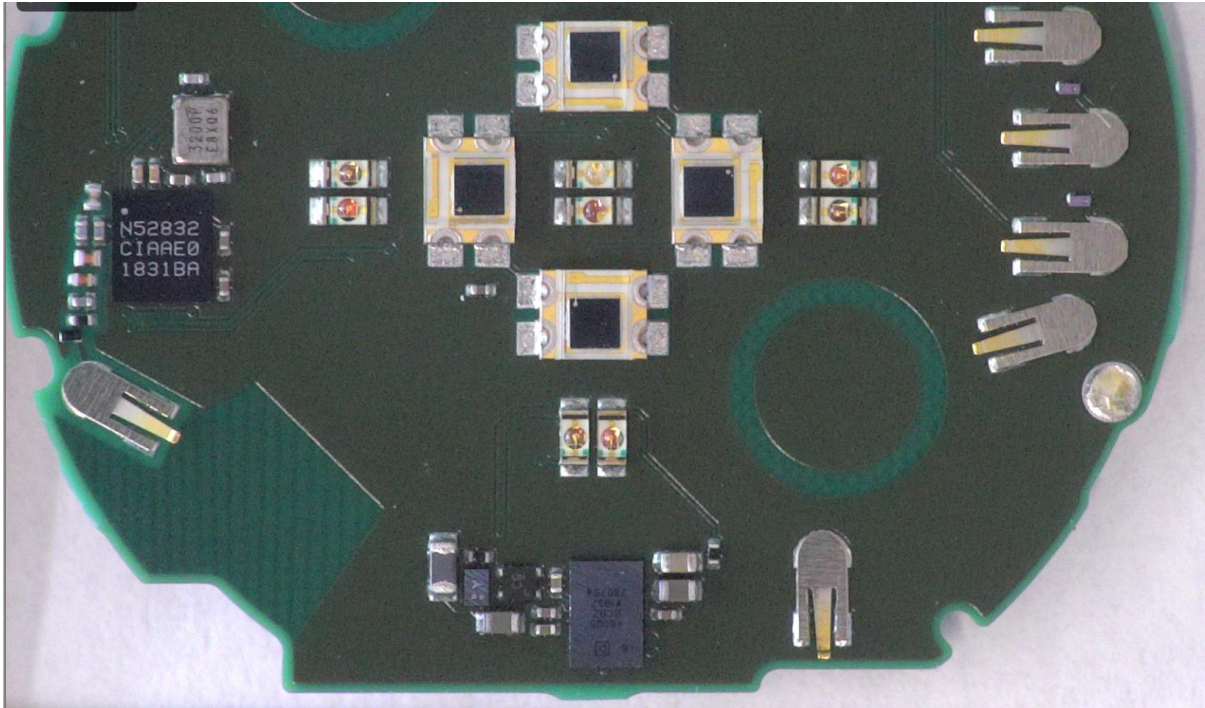


Figure 9. OHR LEDs from the other side of the PWB.

