

Polar 4A Internal pictures



CONFIDENTIAL

29 June 2020



Figure 1. Whole device

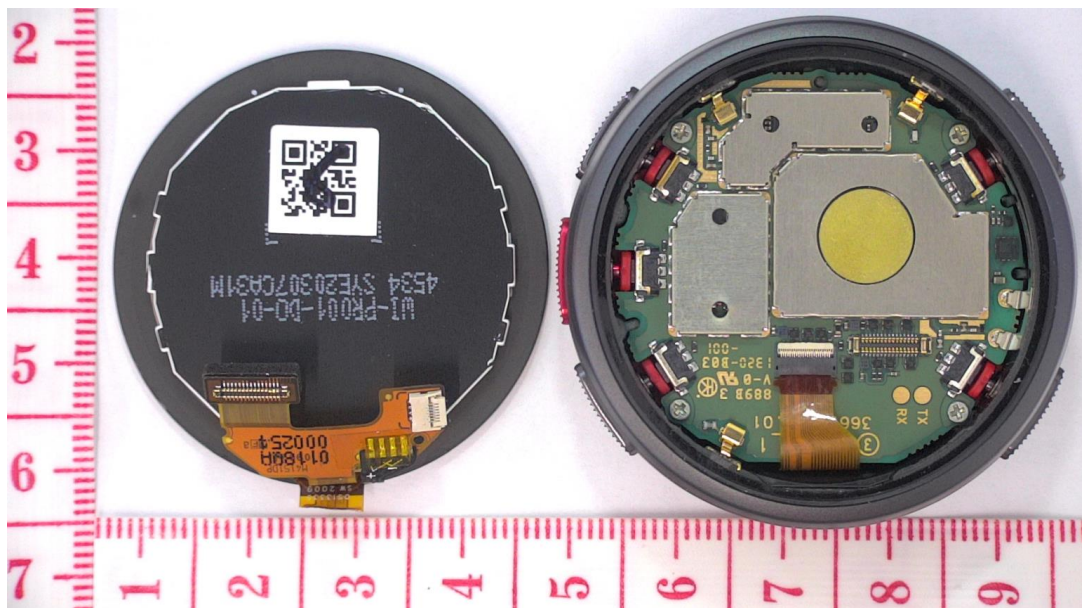


Figure 2. The display module separated.



CONFIDENTIAL

29 June 2020

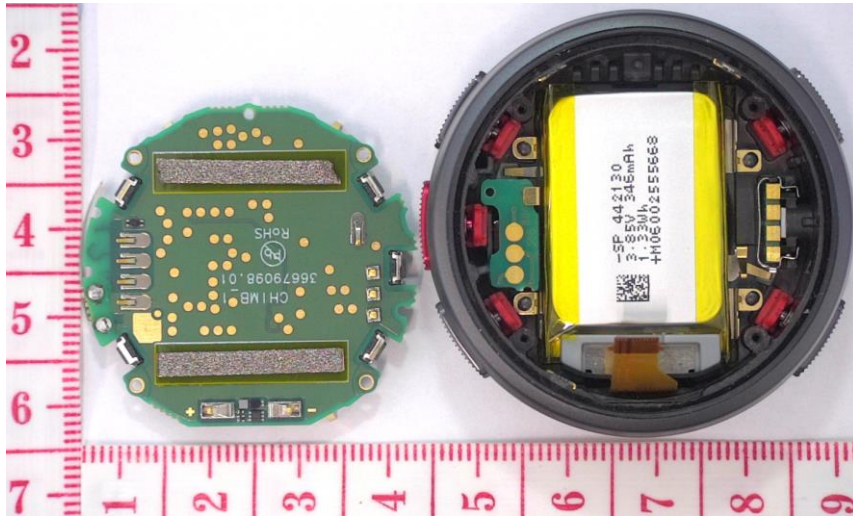


Figure 3. The main PWB removed and from other side.

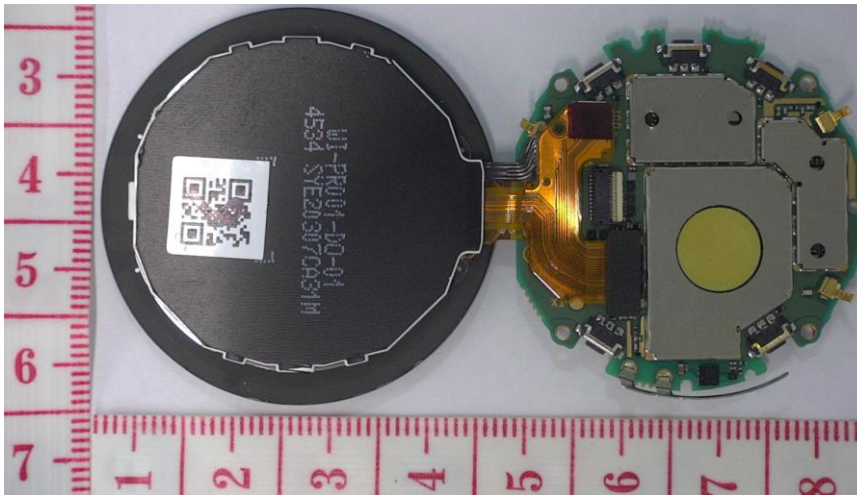


Figure 4. The display module and main PWB connected.

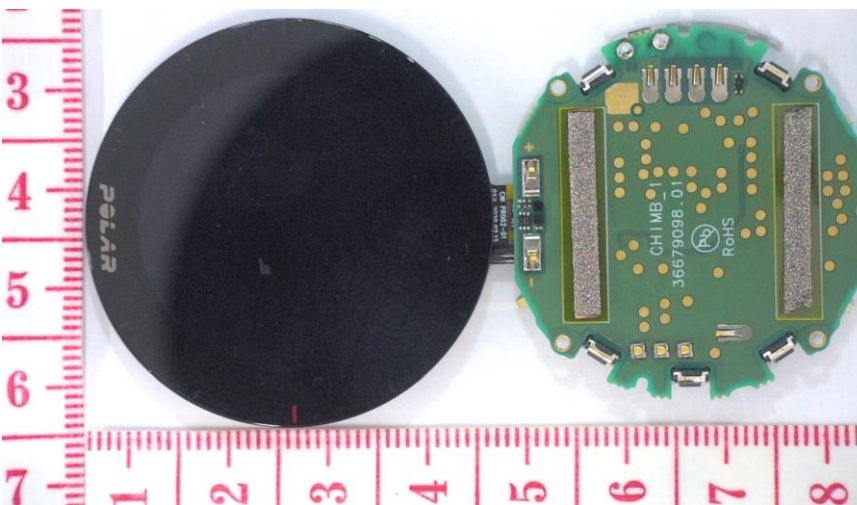


Figure 5. The display module from the other side.



CONFIDENTIAL

29 June 2020

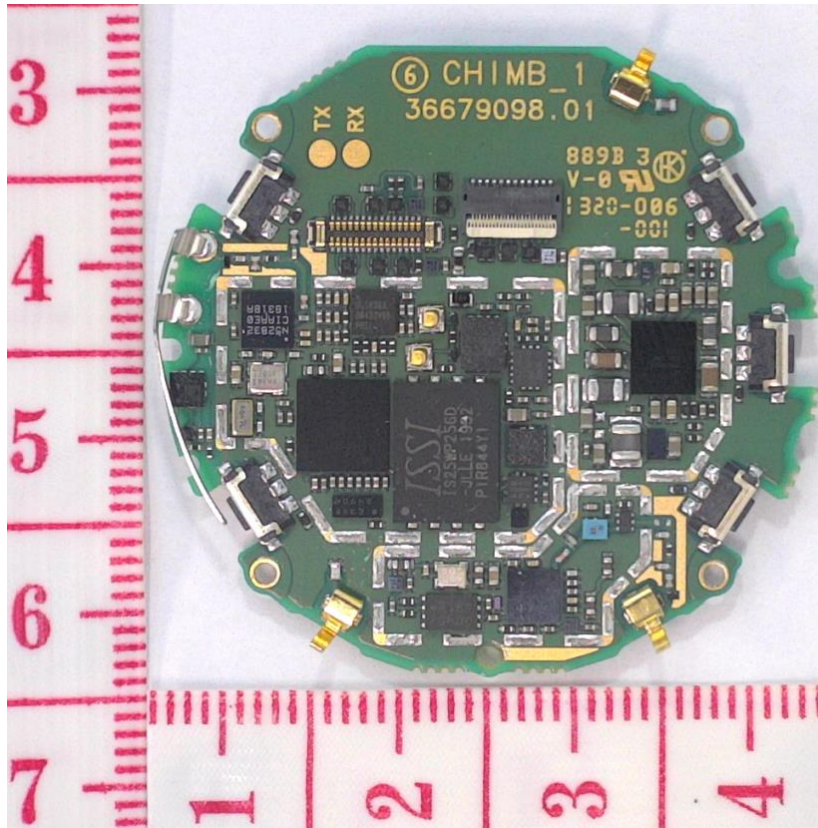


Figure 6. PWB shield removed.

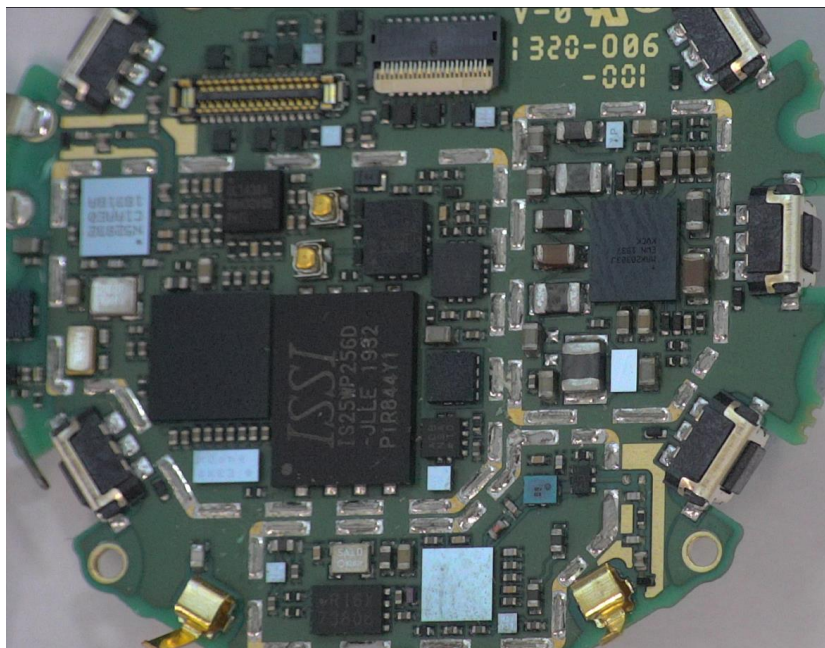


Figure 7. Existing component markings



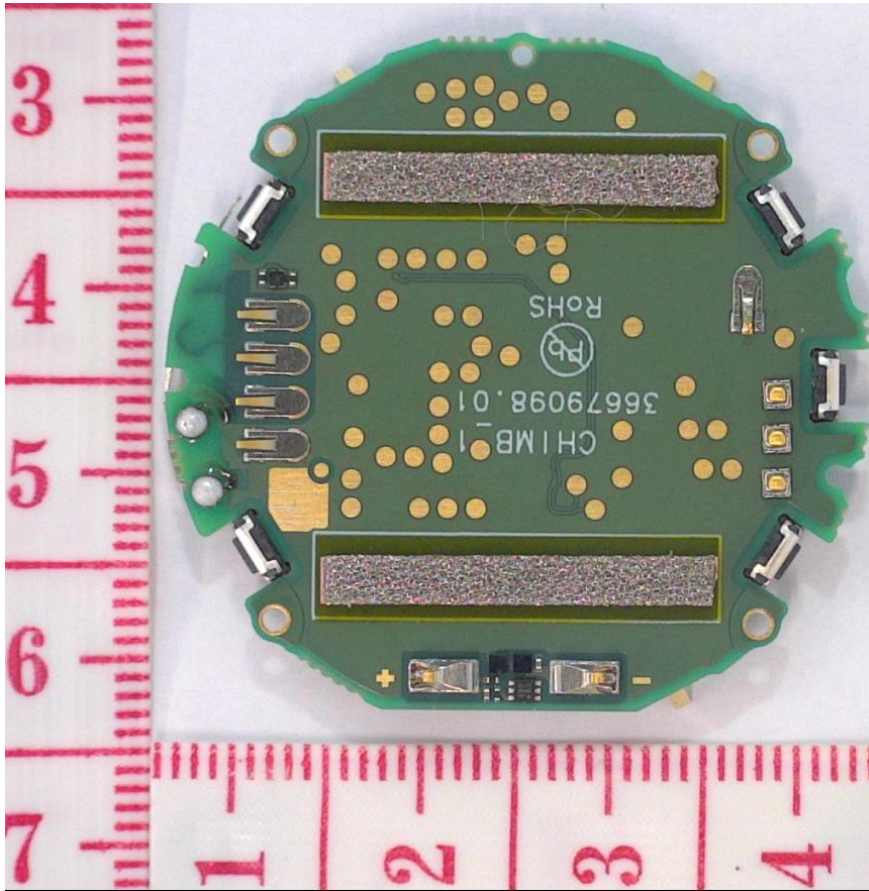


Figure 8. The main PWB from other side.

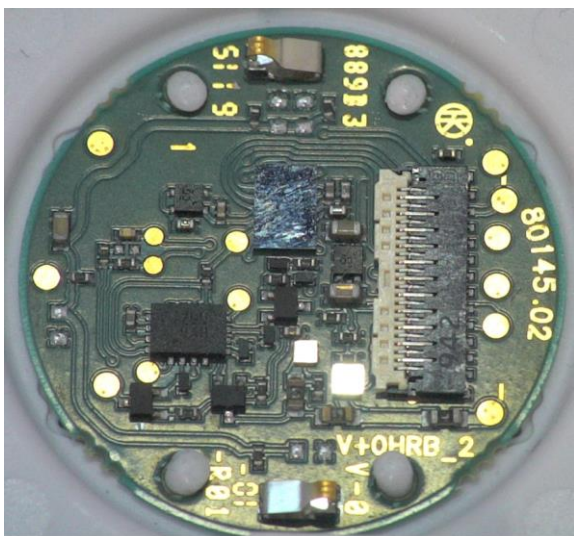


Figure 9. OHR PWB from component side

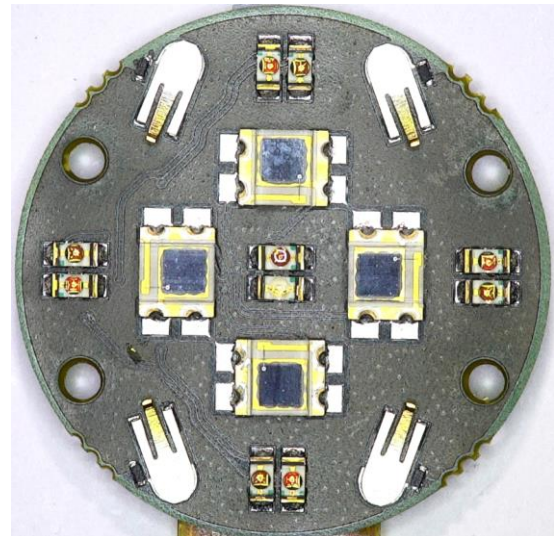


Figure 10. OHR PWB from LED side

