

HW Platforms / R&D
Author: Pentti Pärnänen
+358 (0)440 210 358, pentti.parnanen@polar.com

Confidential

Polar 2Z external pictures

Revision History:

Rev	Date	By	Description of Change
v.1.0	27.3.2019	Pentti Pärnänen	Initial release

TABLE OF CONTENTS:

1. GENERAL VIEW 3
2. INSIDE VIEWS 4

1. General view



Figure 1. The device in two different colors. The other device in clock mode.



Figure 2. The device from front side and from back side.

2. Inside views



Figure 3. The display removed. The device is not fully assembled.



Figure 4. The bezel from the other side.

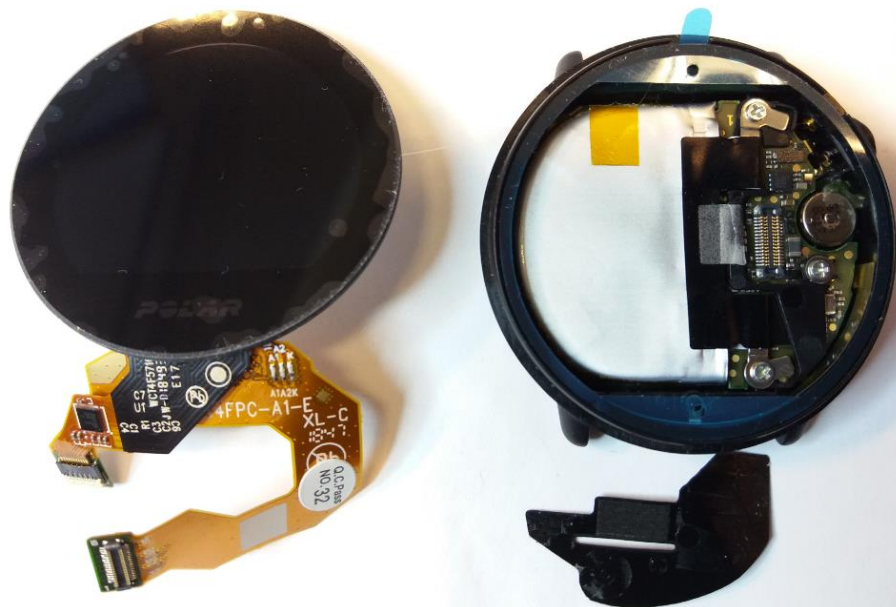


Figure 5. The display fully removed.

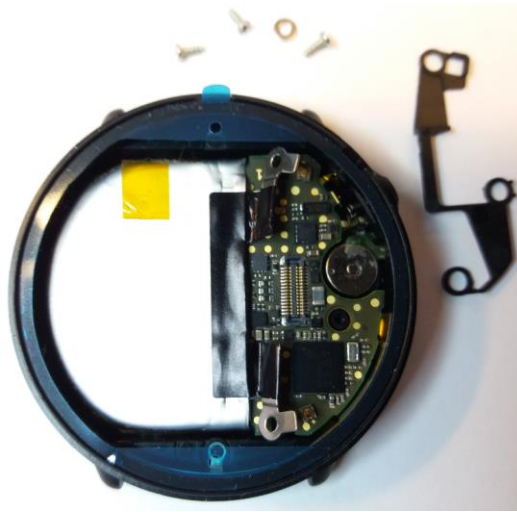


Figure 6. The screws opened.

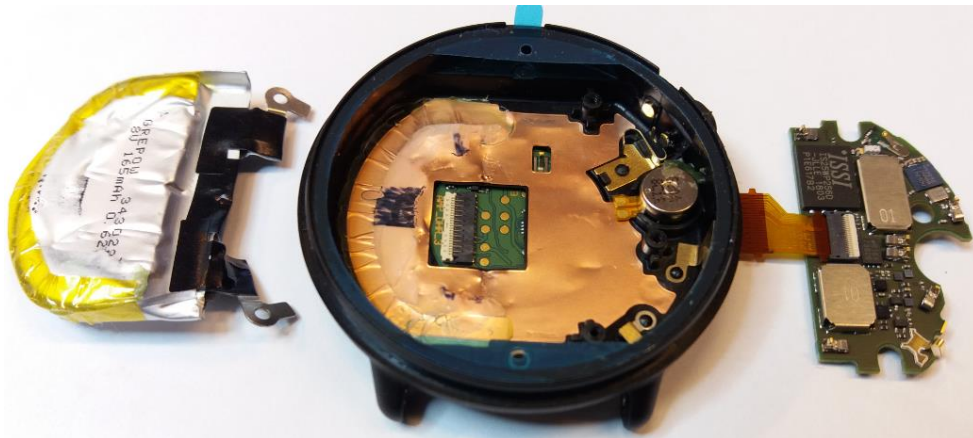


Figure 7. The PWB and the battery removed.



Figure 8. All part separated.

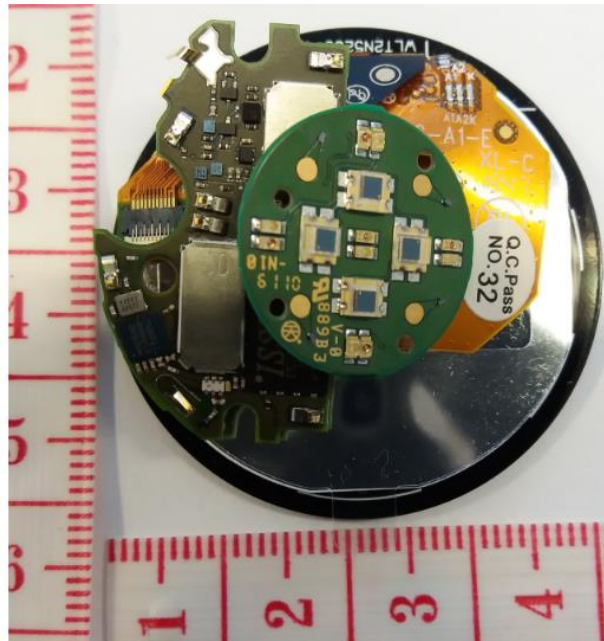


Figure 9. The display is on the bottom, then the main PWB and OHR PWB on the top.

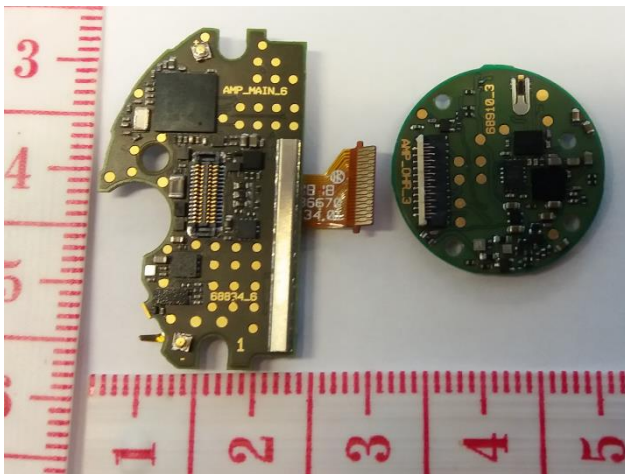


Figure 10. The main PWB and the OHR PWB.

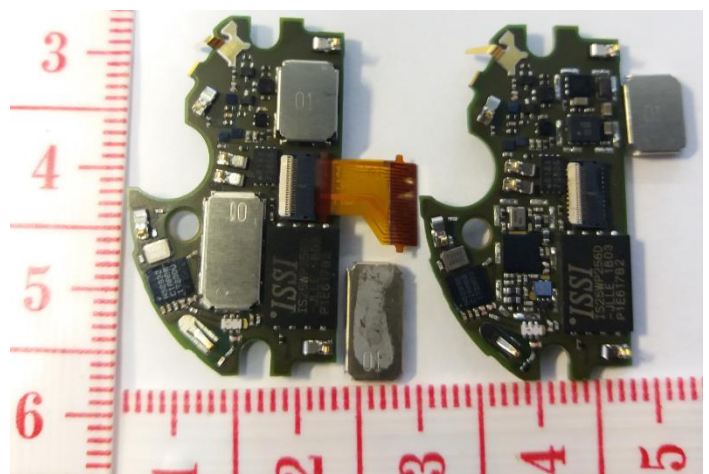


Figure 11. The main PWB and RF shield removed.