
Polar 2R Product Pictures

Revision History:

Rev	Date	By	Description of Change
v.1.0	30.08.2017	NBo	Initial release

Changes in this Revision:

Section	Detail Description of Change

Document Control:

Signature	Date

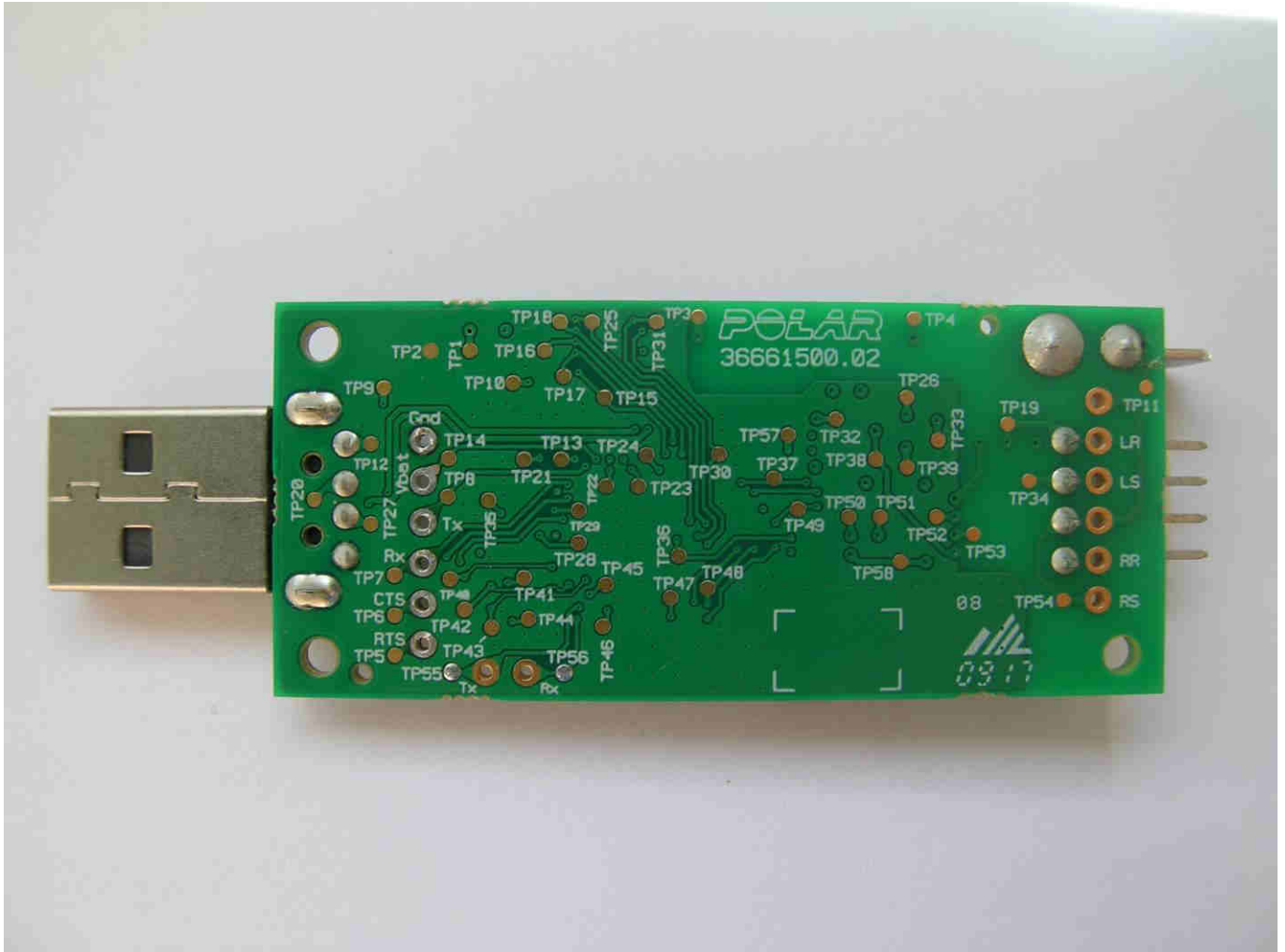
Prepared by:

Archived by:

Polar 2R Top View

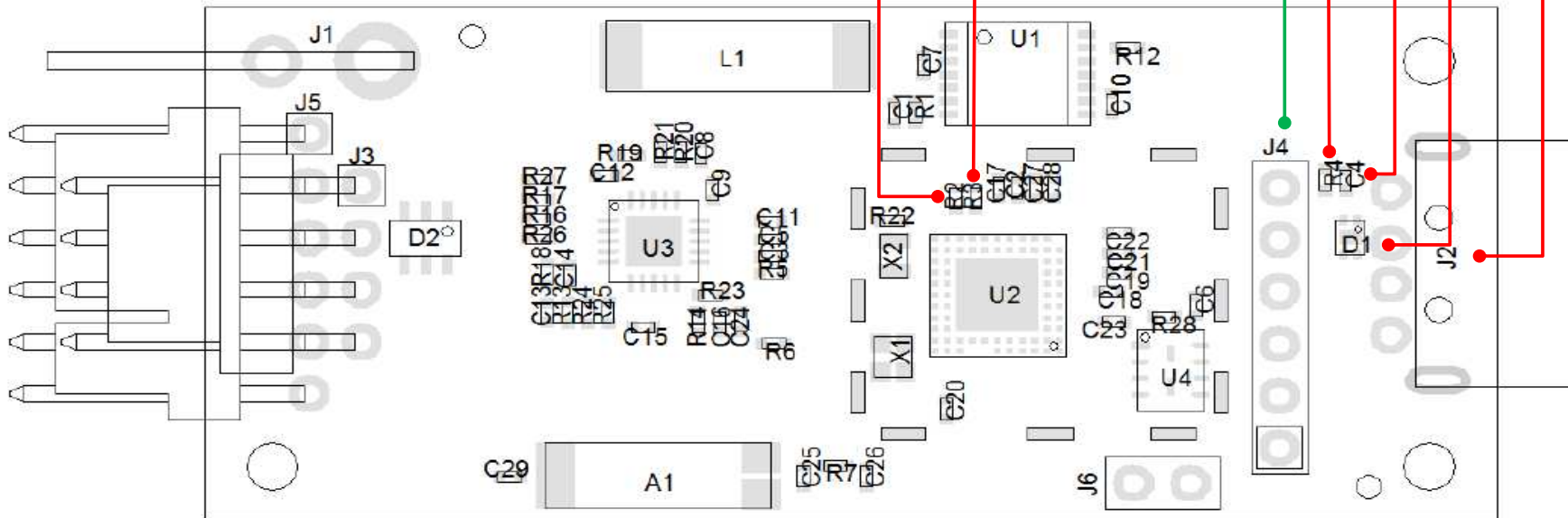


Polar 2R Bottom View



FAMILY APPROVAL DOCUMENT for 2R

		USB	UART
1.	J2	X	
2.	D1	X	
3.	C4	X	
4.	R4	X	
5.	R3	X	
6.	R2	X	
7.	J4		X
8.	SW	model_2R_USB.bin	
9.	SW		model_2R_UART.bin
10.			



HW:

- USB-board: J1, J2, D1, C4, R2, R3 and R4 assembled (J4, J5 and J6 are **NOT** assembled)
J3 (assembled by default) or J5 could be a Molex, JST, Hirose, etc...
- UART-board: J1 and J4 assembled (J2, J5, J6, D1, C4, R2, R3 and R4 are **NOT** assembled)
J3 (assembled by default) or J5 and J4 could be a Molex, JST, Hirose, etc...

The connectors type of J1, J3, J4 and J5 could change when a customer requests a specific connector type.'

SW:

- USB: model_2R_USB.bin
- UART: model_2R_UART.bin

