

Author: Pentti Pärnänen
+358 (0)8 5202 100, pentti.parnanen@polar.com



Figure 1.



Figure 2.

Figure 1. and figure 2. M430 from the frontside and from the backside



Figure 3. M430 opened

Author: Pentti Pärnänen
+358 (0)8 5202 100, pentti.parnanen@polar.com

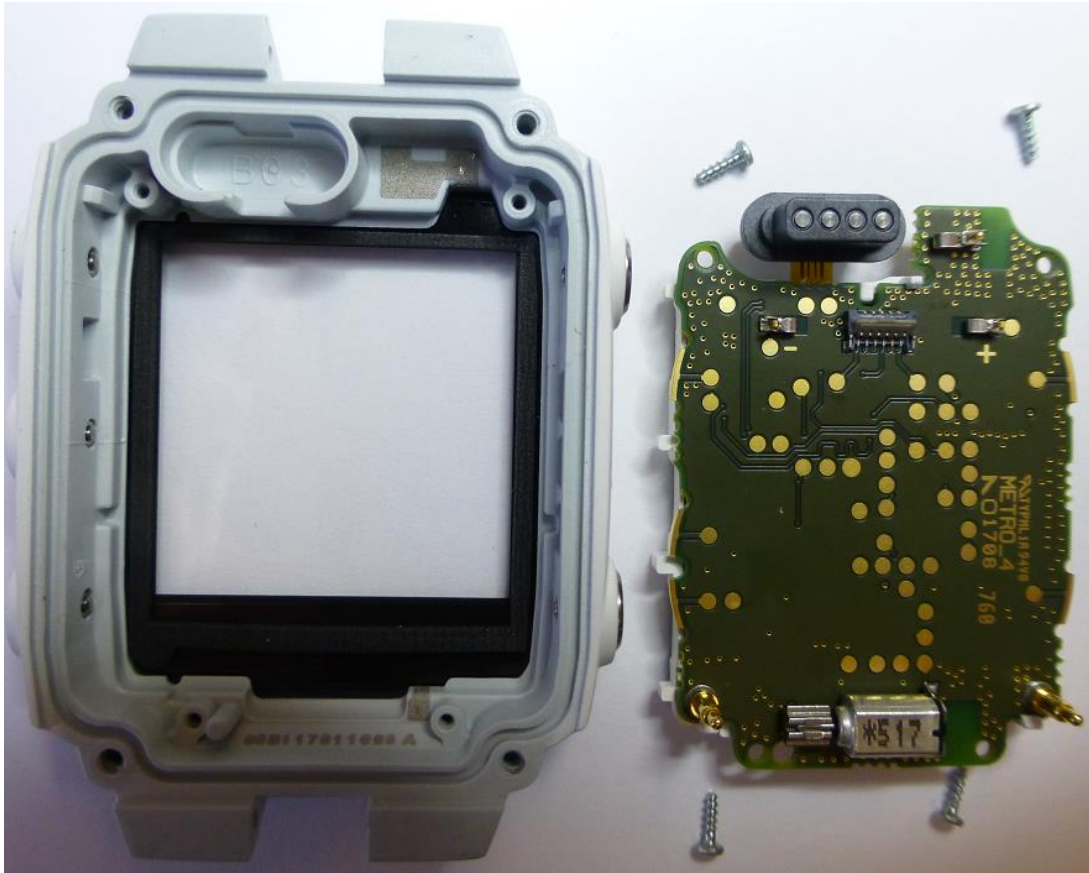


Figure 4. The front cover and display + PWB separated

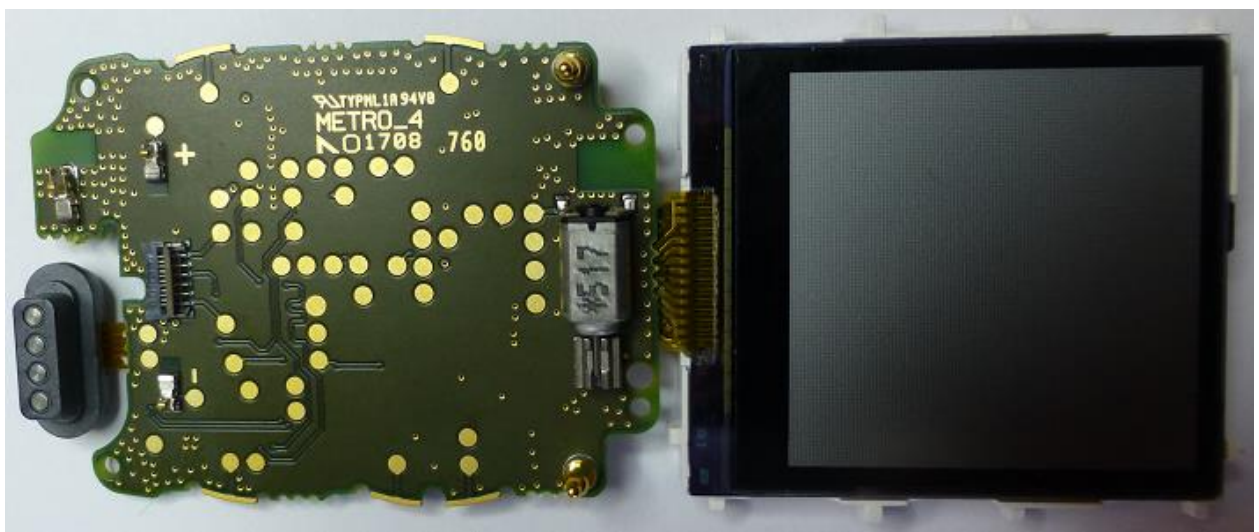


Figure 5. Electronic module with LCD

Author: Pentti Pärnänen
+358 (0)8 5202 100, pentti.parnanen@polar.com

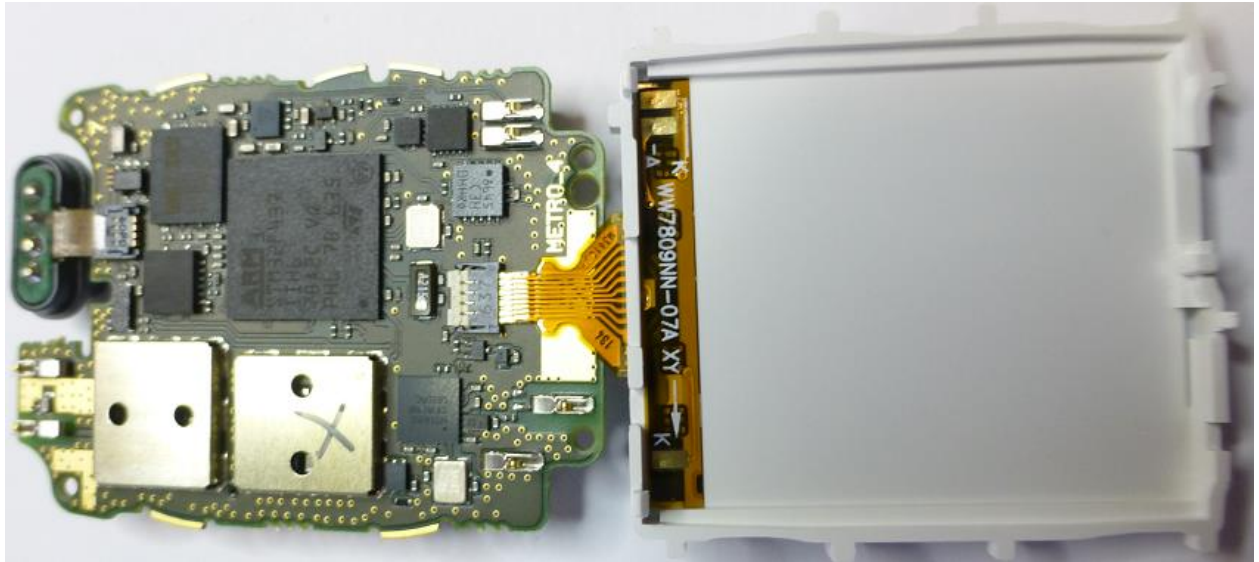


Figure 6. Electronic module with LCD from the backside

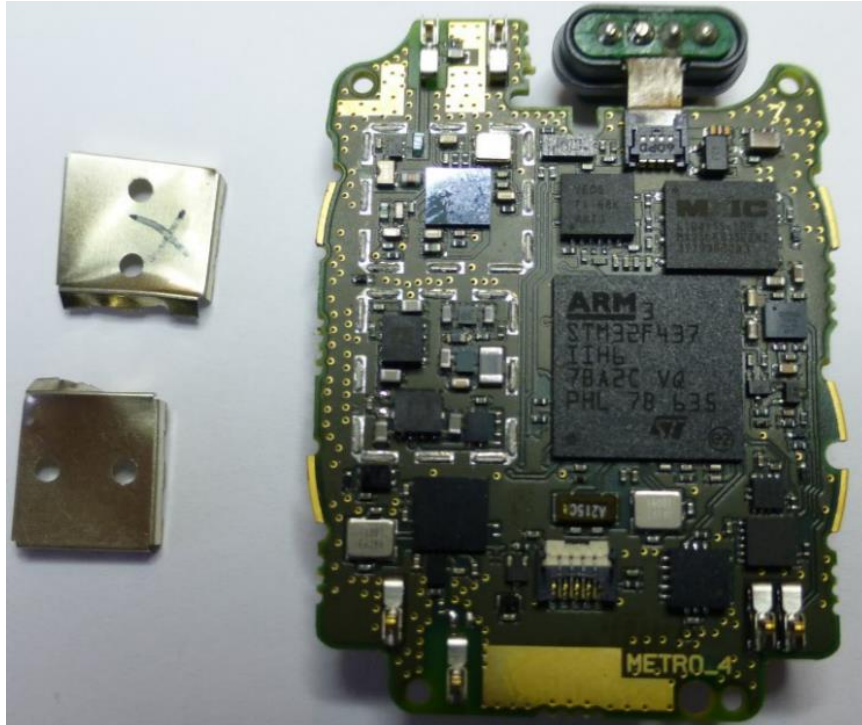


Figure 7. Electronics module, two shields removed

Author: Pentti Pärnänen
+358 (0)8 5202 100, pentti.parnanen@polar.com



Figure 8. The back cover and the battery separated



Figure 9. The back cover from the inside