

Author: Laura Uusimäki-Virpi
+358 (0)8 5202 687, laura.uusimaki-virpi@polar.com



Figure 1. Lens and frame removed



Figure 2. PWBA and battery removed

Author: Laura Uusimäki-Virpi
+358 (0)8 5202 687, laura.uusimaki-virpi@polar.com

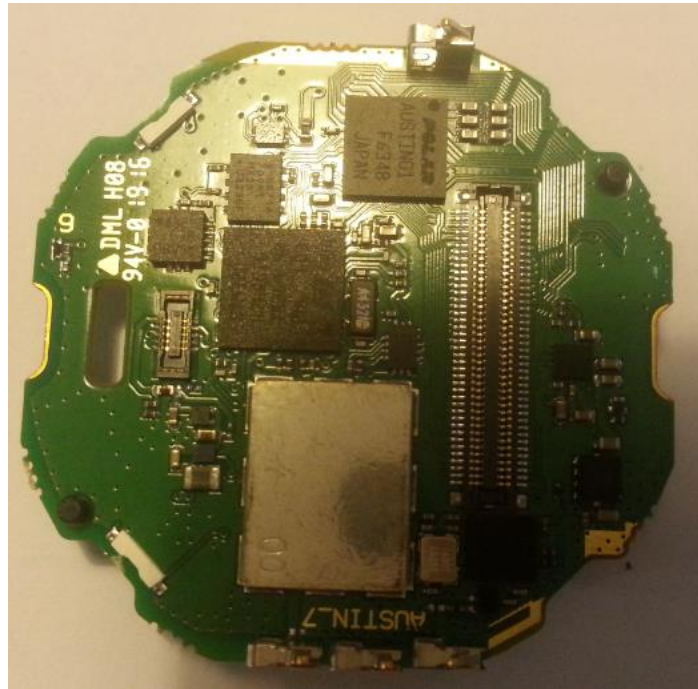


Figure 3. PWB module, top view

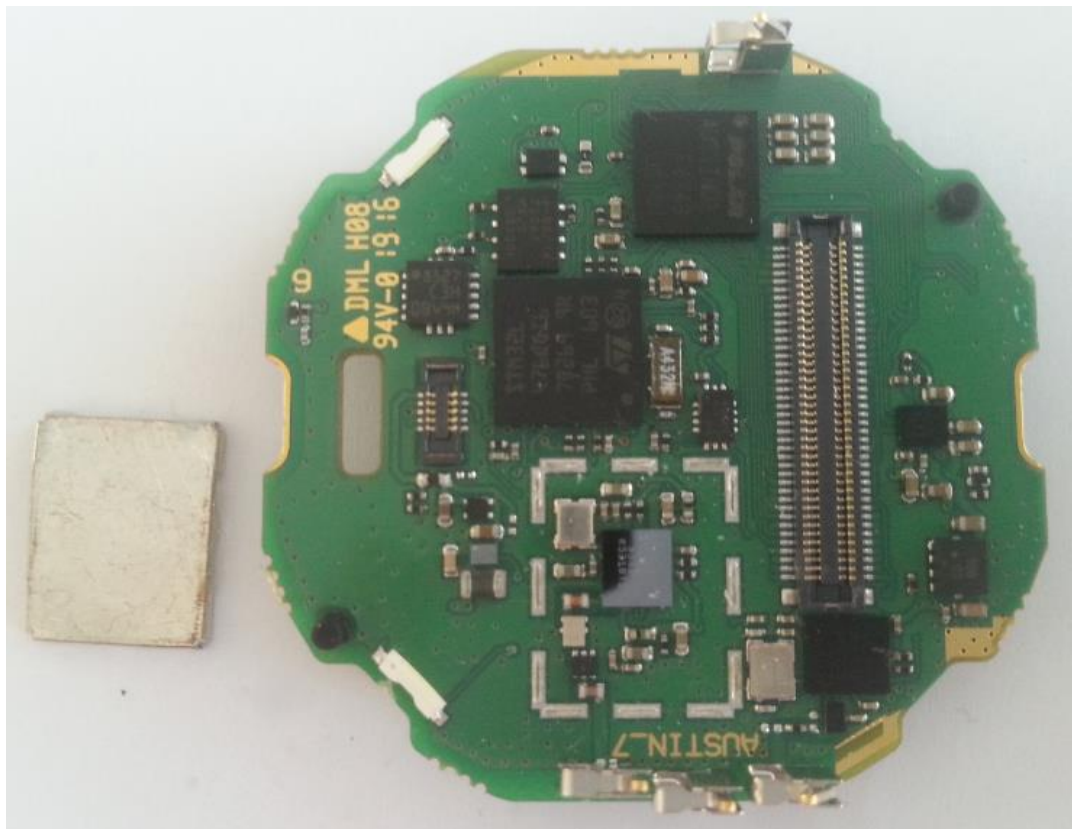


Figure 4. PWB module shield opened, top view

Author: Laura Uusimäki-Virpi
+358 (0)8 5202 687, laura.uusimaki-virpi@polar.com

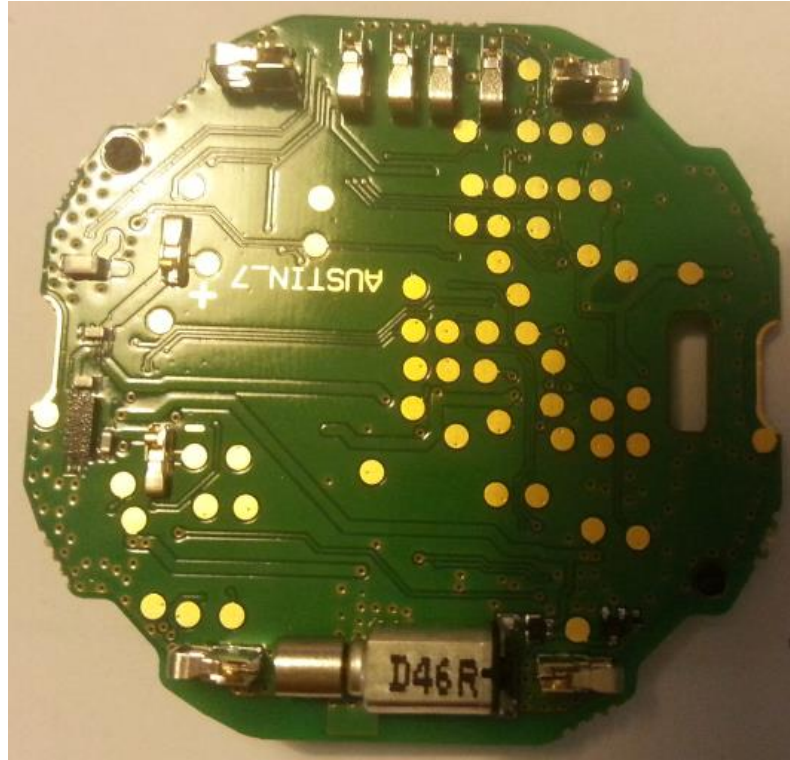


Figure 5. PWB module, bottom view



Figure 6. F.case with PWBA OHR

Author: Laura Uusimäki-Virpi
+358 (0)8 5202 687, laura.uusimaki-virpi@polar.com



Figure 7. PWBA OHR, other side