



Figure 1. Device opened

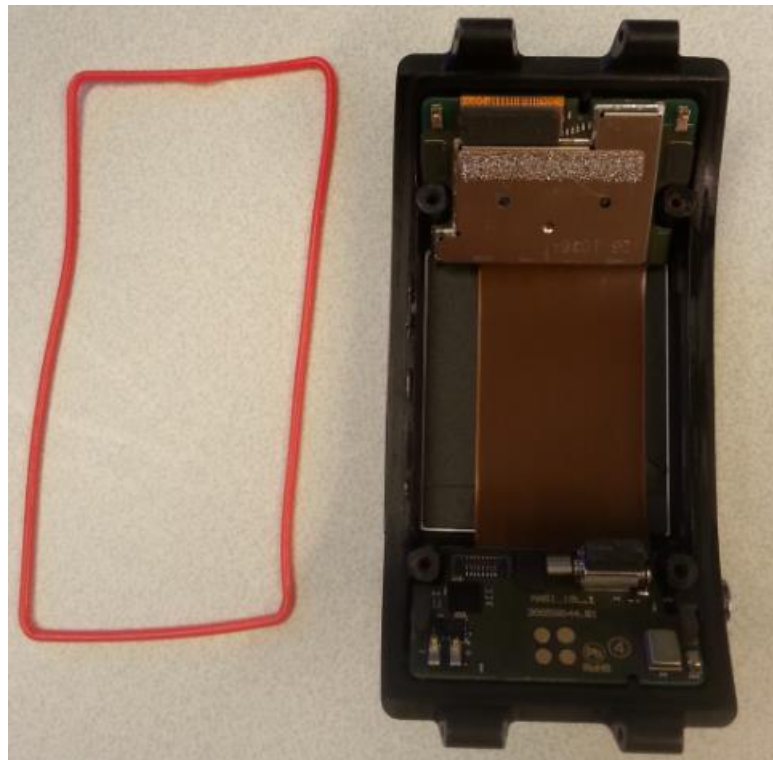


Figure 2. Front cover



Figure 3. Front cover opened, PWBA assembly removed

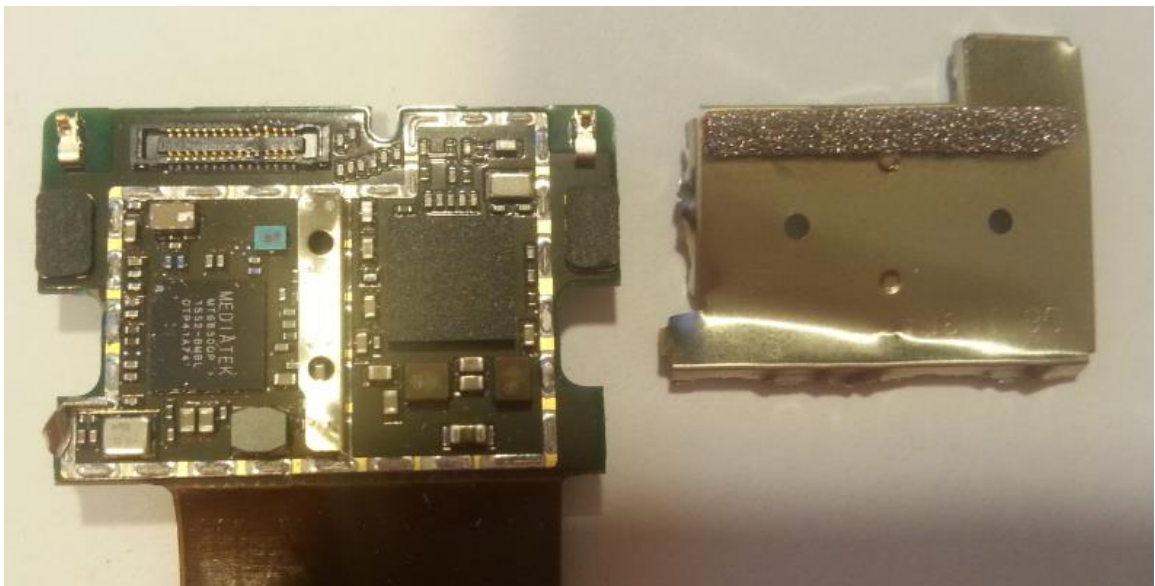


Figure 4. PWBA assembly, front side, shield removed



Figure 5. PWBA assembly, front side



Figure 6. PWBA assembly, bottom side

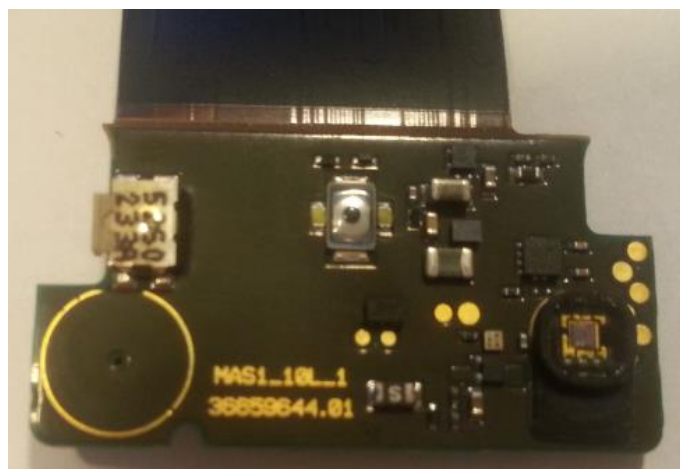


Figure 7. PWBA assembly, bottom side

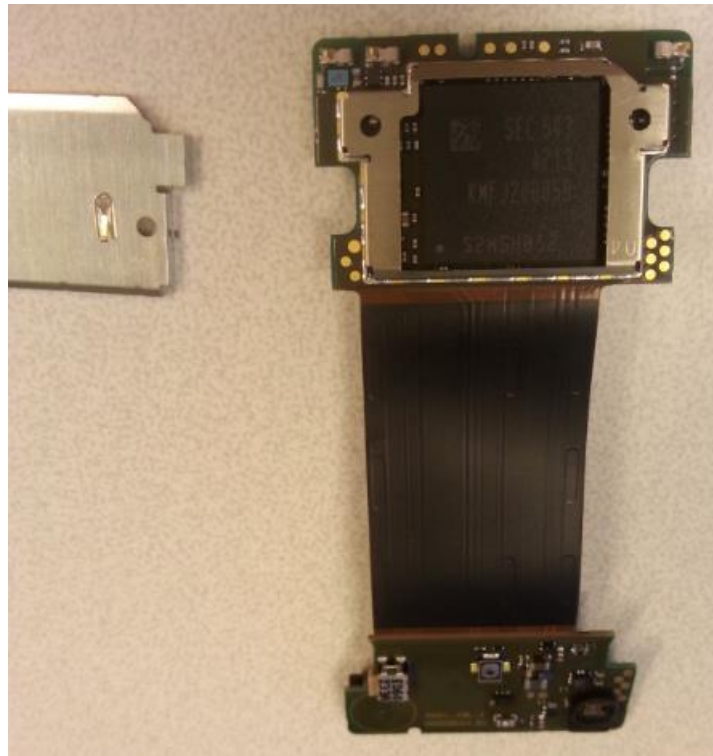


Figure 8. PWBA assembly, bottom side (shield removed)



Figure 9. Back cover, battery removed