

X1	SEP 13, 2004	1, Changed J63 for selction of channel display. 2, Changed keyboard matrix. 3, Changed port confi.	DRAWN BY: CHENG CHUNG MING CHECKED BY: CHENG CHUNG MING
X3	NOV 29, 2004	1, Changed MCU to 64162A. 2, Changed Temperature and Humidity circuit. 3, Changed Options and Channel definition. 4, Use fast clock, and others . .	APPROVED BY:
X4	FEB 4, 2005	1, Changed humidity sensor 2, Changed MCU to 64164C	
X5	SEP 16, 2005	1, Changed C2 to 2200pF 2, Changed humidity calibration circuit 3, Added test mode selection by J52 4, Changed sampling rate (J60)	

J2	J1	TEMPERATURE
CLOSE	CLOSE	-1F
CLOSE	OPEN	0F (Default)
OPEN	CLOSE	+1F
OPEN	OPEN	+2F

SWITCHES	FUNCTION	OFF	ON
P23	TEMPERATURE DISPLAY	F	C
P30	CHANNEL BIT 0	1	0
P31	CHANNEL BIT 1	2	0
P32	CHANNEL BIT 2	4	0
P33	CHANNEL BIT 3	8	0

JUMPERS	FUNCTION	OPEN	CLOSE
J50	MOVING AVG (TEMP)	NO	YES
J51	MOVING AVG (HUMI)	NO	YES
J52	TEST MODE	NO	YES
J60	SAMPLING RATE	30SEC	2MIN
J61	OUTDOOR SENSOR	YES	NO
J62	ALTERNATING DISPLAY	NO	YES
J63	DISPLAY CHANNEL	NO	YES

OPTION	SELECT
POWER SUPPLY VOLTAGE	3.0V
CG OF CRYSTAL OSCILLATOR	BUILT-IN
LCD DUTY CYCLE	1/4

PORT	CONFIG
P00 - P03	INPUT: PULL UP, INTERRUPT
P10 - P13	OUTPUT: NCH OPEN DRAIN
P20	OUTPUT: NCH OPEN DRAIN
P21, P23	INPUT: PULL UP
P22	INPUT: HIGH IMPEDANCE
P30 - P33	INPUT: PULL UP
P40 - P43	INPUT: PULL UP
BD	POSITIVE, 2048, SINGLE
L0 - L25	NORMAL LCD DRIVER
L26 - L33	OUTPUT: CMOS

NOTE:
 1, All resistors are 0805, 5% unless otherwise specified.
 2, C9 is MCU decoupling cap.
 3, Lobat stage 1: 2.7V, stage 2: 2.5V. Tolerance +/-0.1V
 4, Temperature calibration: Default = J1 open & J2 close
 5, Buzzer circuit is optional.
 6, Keys are optional.
 7, Humidity sensor is optional.
 8, J4x not used

COMPUTIME LTD.		
Title HUNTER 43758 UNIVERSAL REMOTE SENSOR		
Size A4	Document Number 43758	Rev X5
Date Tuesday, October 17, 2006	Sheet 1	of 1

1

2

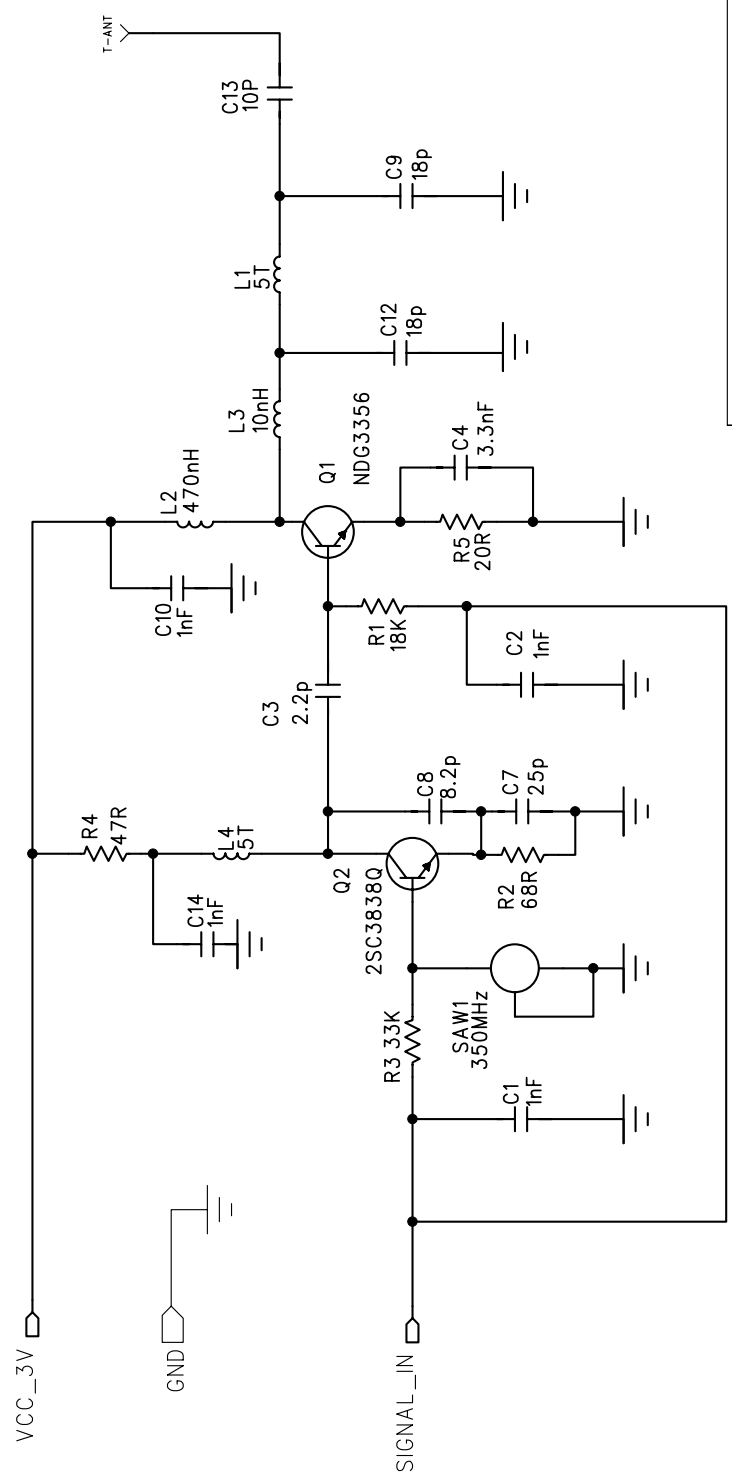
3

4

5

6

REVISION RECORD		
LTR	DESC.	APPROVED: DATE:



COMPANY:	
TITLE: Hunter 43758 TX MODULE BOARD	
CODE:	SIZE:
DRAWING NO:	REV: 1
SCALE: 1 OF 1	SHEET: 1 OF 1

DRAWN: Sunny_Zhou	DATED: 01 Jan 2006
CHECKED:	DATED:
QUALITY CONTROL:	DATED:
RELEASED:	DATED:

D

C

B

A