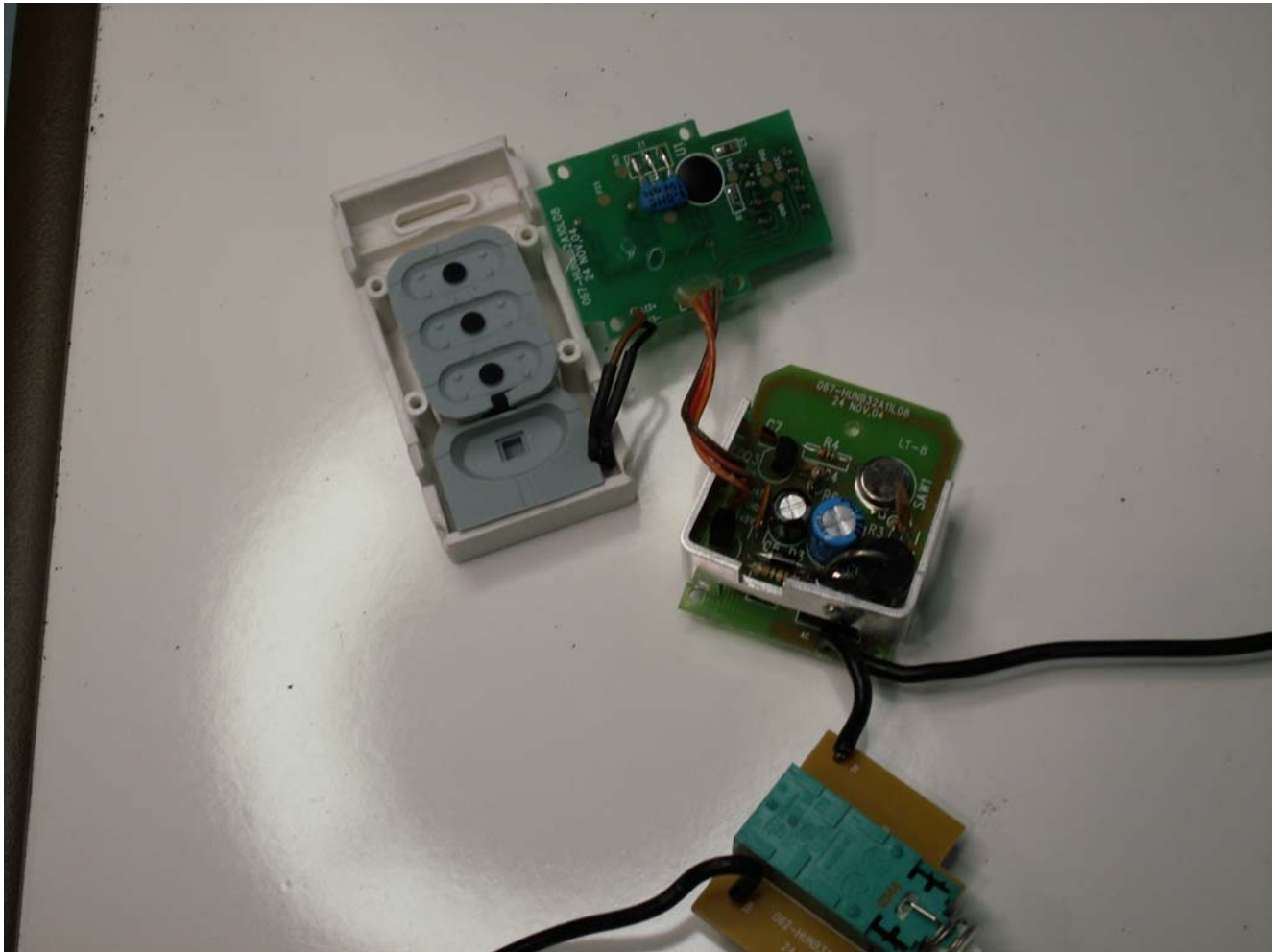
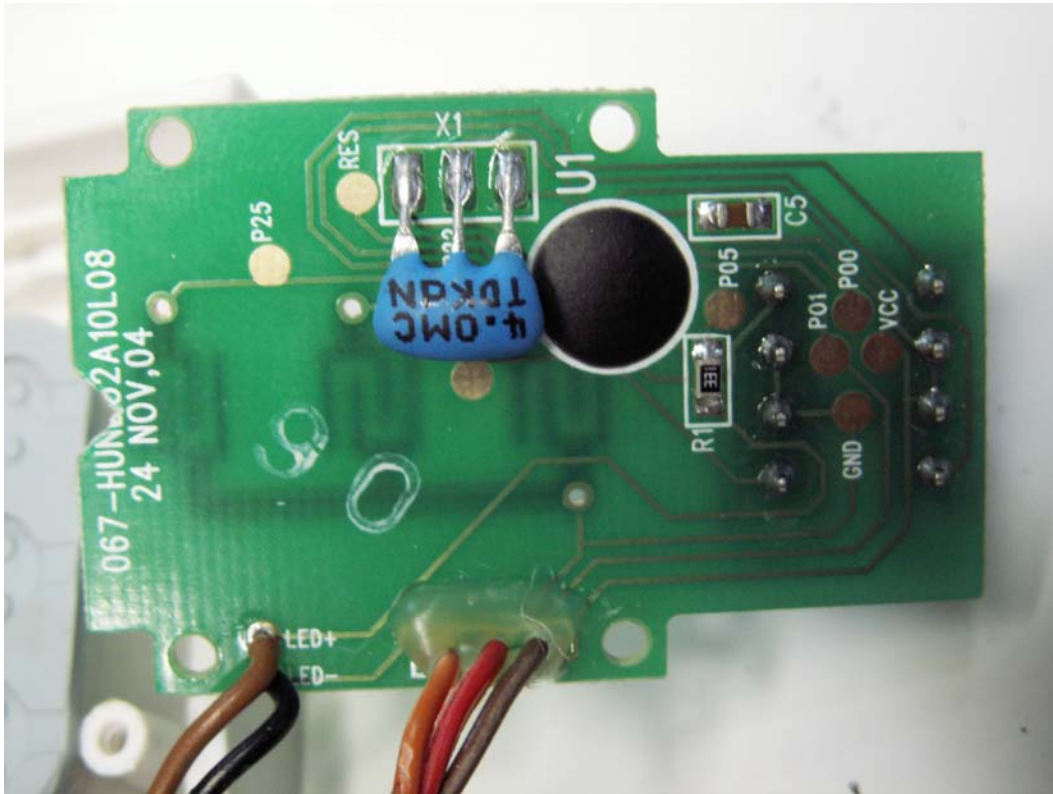


Internal Photos

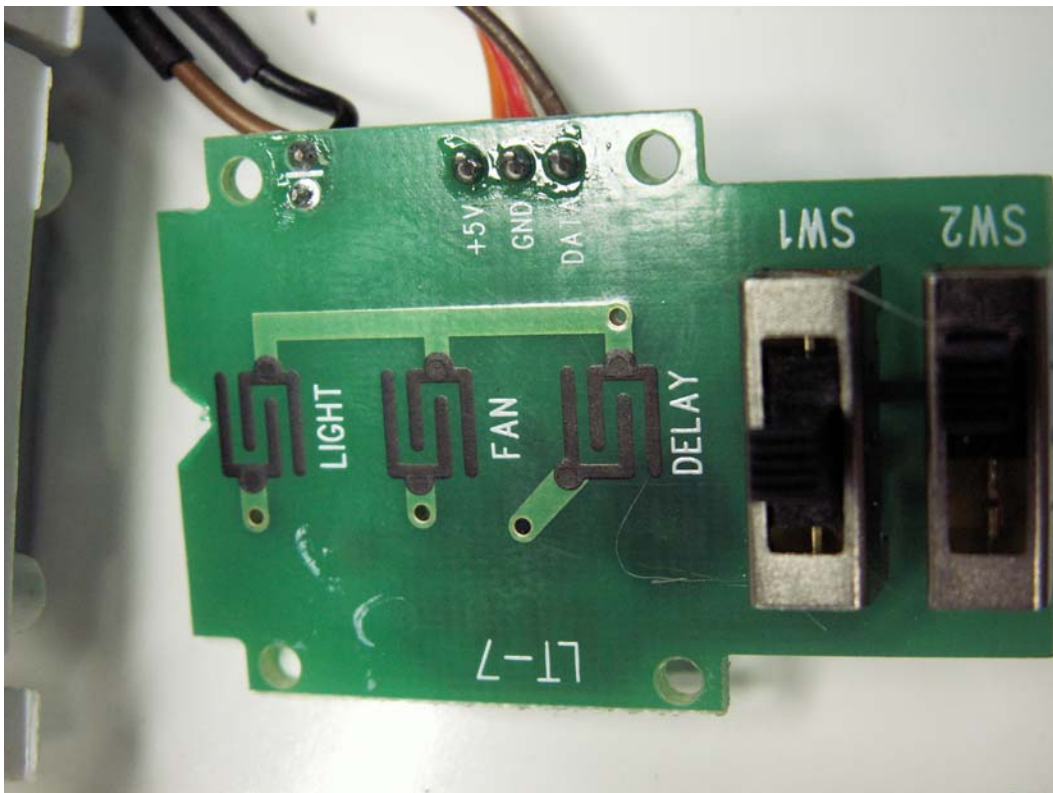
Components (Top to Bottom: Keypad Board, Transmit Board, Switch Board)
Detailed photos on following pages.



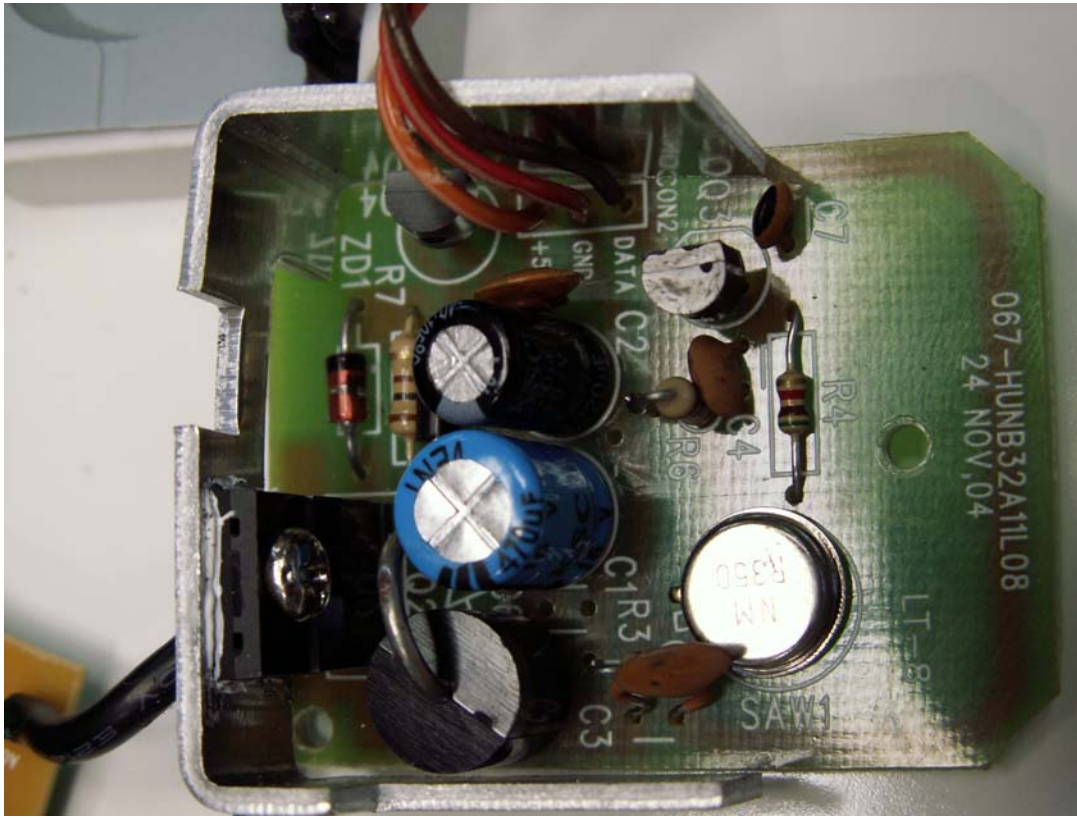
Keypad Board (Component Side)



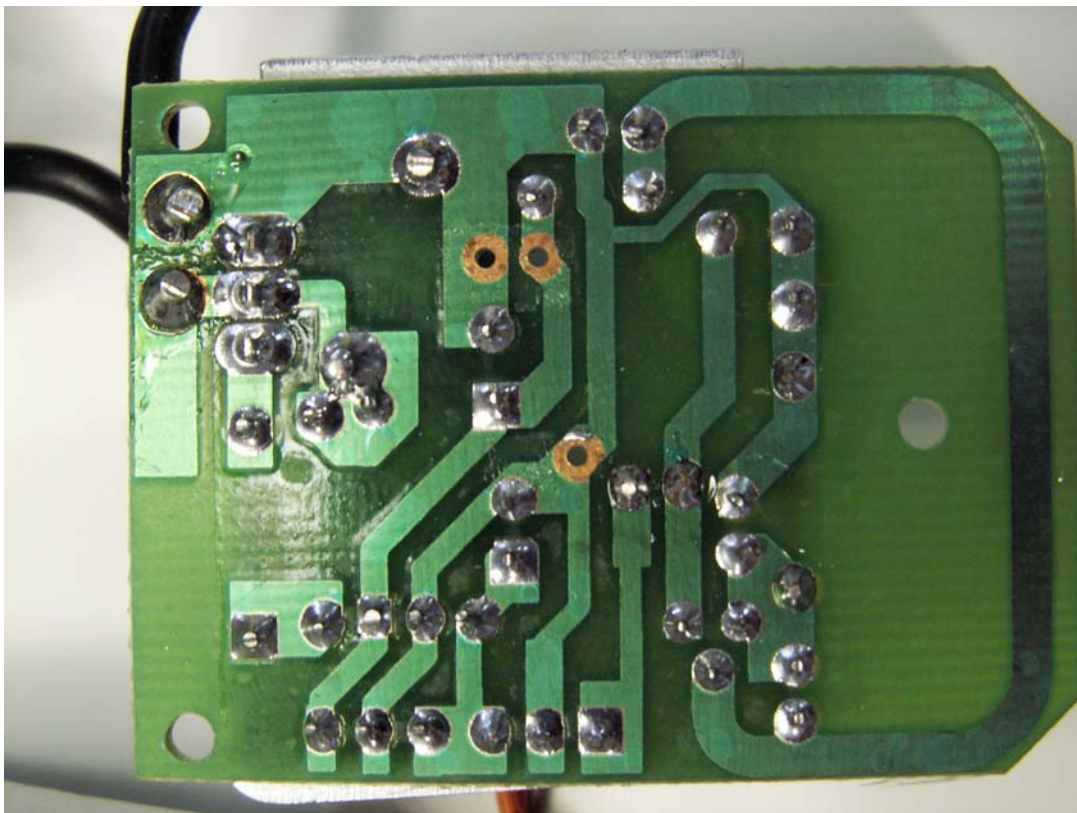
Keypad Board (Keypad side)



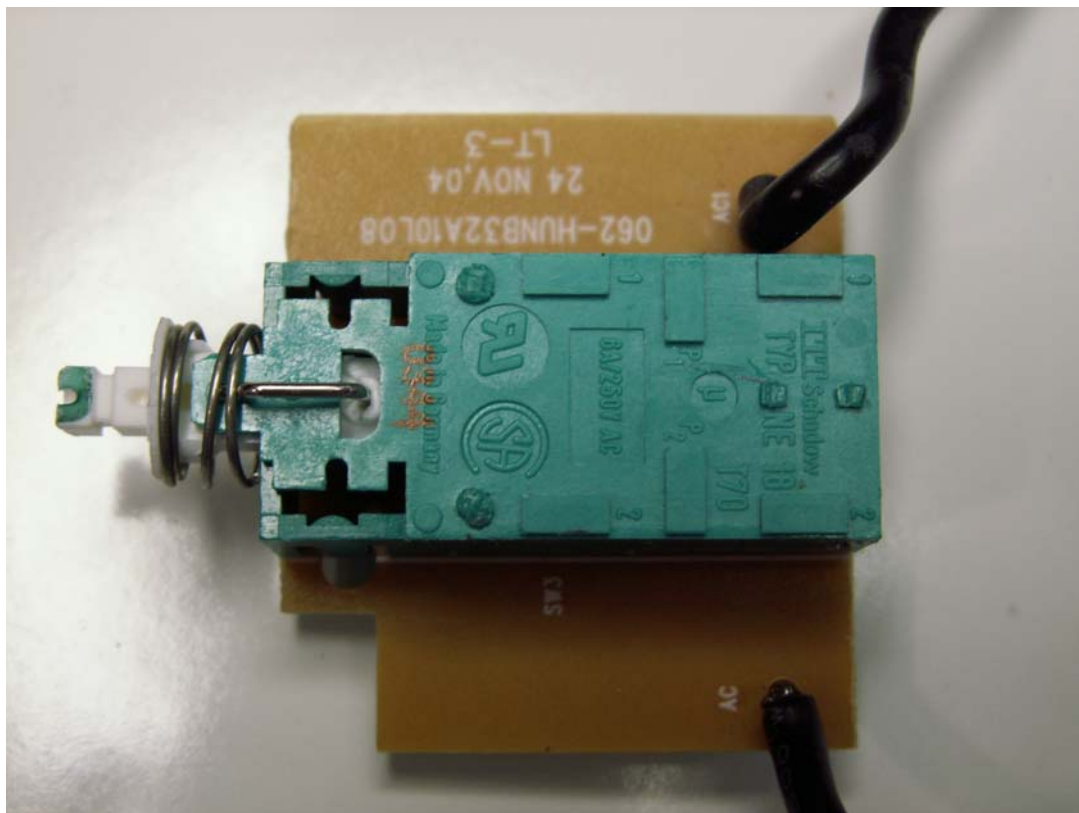
Transmit Board (Component Side)



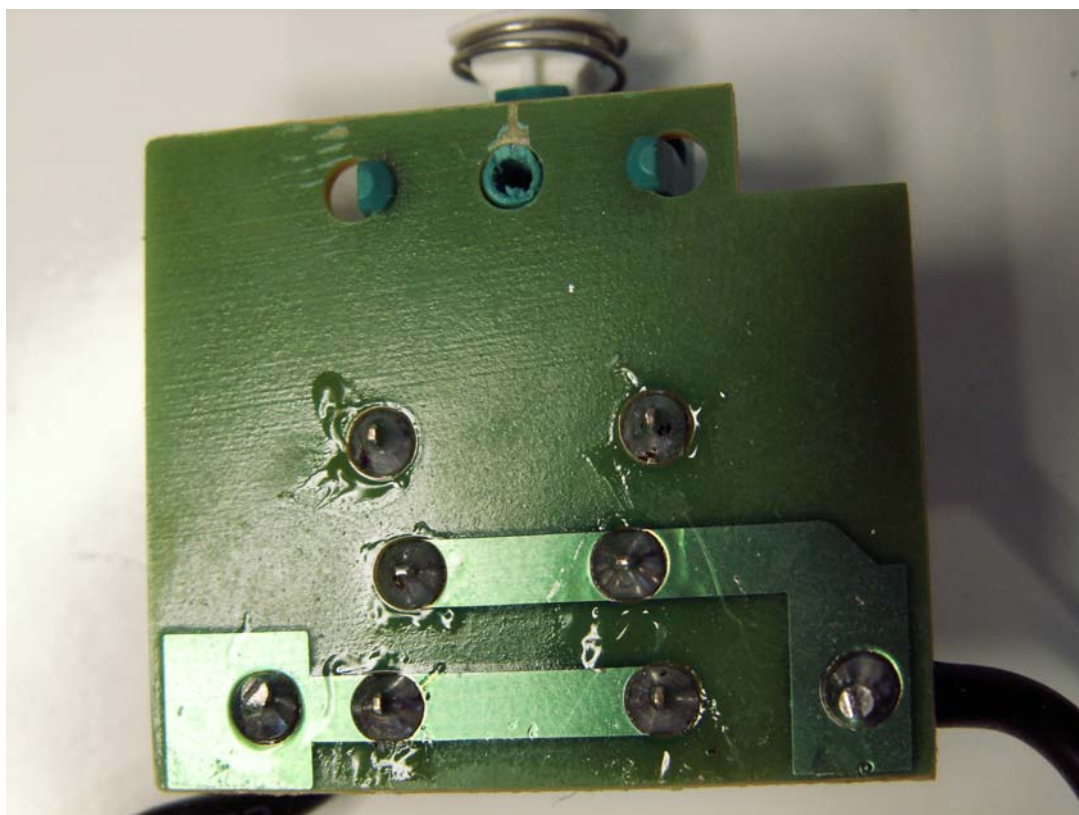
Transmit Board (Solder Side)



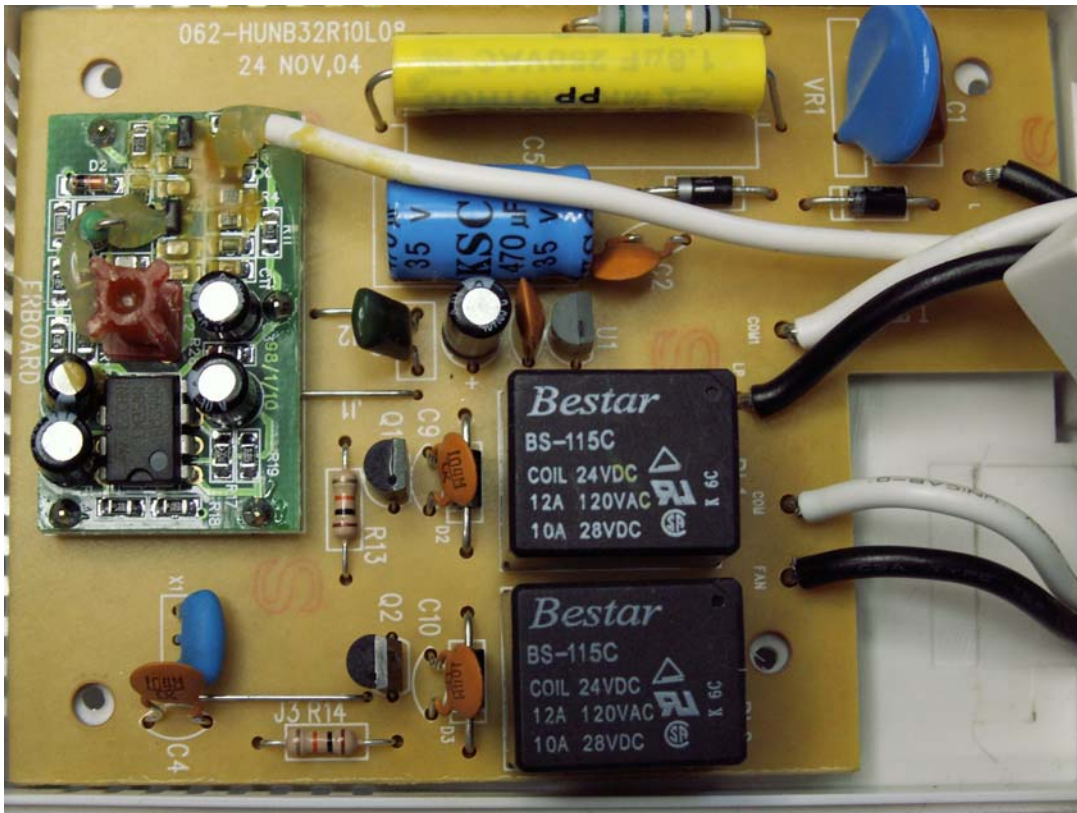
On/Off Switch Board (Component Side)



On/Off Switch Board (Solder Side)



Receiver Board (Component Side)



Solder Side

