



**INTERIOR PHOTOGRAPHS OF A 2.4 GHZ LOW  
POWER WLAN MULTIPORT CARD, BRAND  
COMPAQ, TYPE WA1000.**

**TNO Electronic Products & Services (EPS) B.V.**  
P.O. Box 15  
9822 ZG Niekerk (NL)  
Smidshornerweg 18  
9822 TL Niekerk (NL)

Telephone: +31 594 505005  
Telefax: +31 594 504804

E-mail: [info@eps.tno.nl](mailto:info@eps.tno.nl)



**Description of EUT:** 2.4 GHz low power WLAN MultiPort card  
**Manufacturer:** Compaq Computer Corporation  
**Brand mark:** Compaq  
**Type:** WA1000  
**FCC ID:** IMRWA1000

---

### **Description of test item**

Test item : 2.4 GHz low power WLAN MultiPort card  
Manufacturer : Compaq Computer Corporation  
Brand : Compaq  
Type : WA1000  
Serial numbers : 02UT16300000, 02UT15300001, 02UT15300003, 01UT44640010  
Revision : n.a.  
Receipt number : 4  
Receipt date : April 22, 2002

### **Applicant information**

Applicant's representative : Mr. Andy St. Cyr  
Company : Compaq Computer Corporation  
Address : 20555 SH 249, MS060607  
Postal code : TX 77070-2698  
City : Houston  
PO-box : -  
Postal code : -  
City : -  
Country : U.S.A.  
Telephone number : +1 281 514 4696  
Telefax number : +1 281 518 9584  
Order number : n.a.

**This report is in conformity with NEN-EN-ISO/IEC 17025.**

**This report shall not be reproduced, except in full, without the written permission of TNO Electronic Products & Services (EPS) B.V.  
The test results relate only to the item(s) tested.**



**Description of EUT:** 2.4 GHz low power WLAN MultiPort card  
**Manufacturer:** Compaq Computer Corporation  
**Brand mark:** Compaq  
**Type:** WA1000  
**FCC ID:** IMRWA1000

---

## **Table of contents**

1	Interior photographs.....	4
1.1	Top view PCB (with shielding).....	4
1.2	Top view PCB (without shielding).....	5
1.3	Bottom view PCB.....	6
1.4	Antenna part of PCB (top).....	7
1.5	Antenna part of PCB (bottom).....	8
1.6	Antenna part of PCB (front).....	9

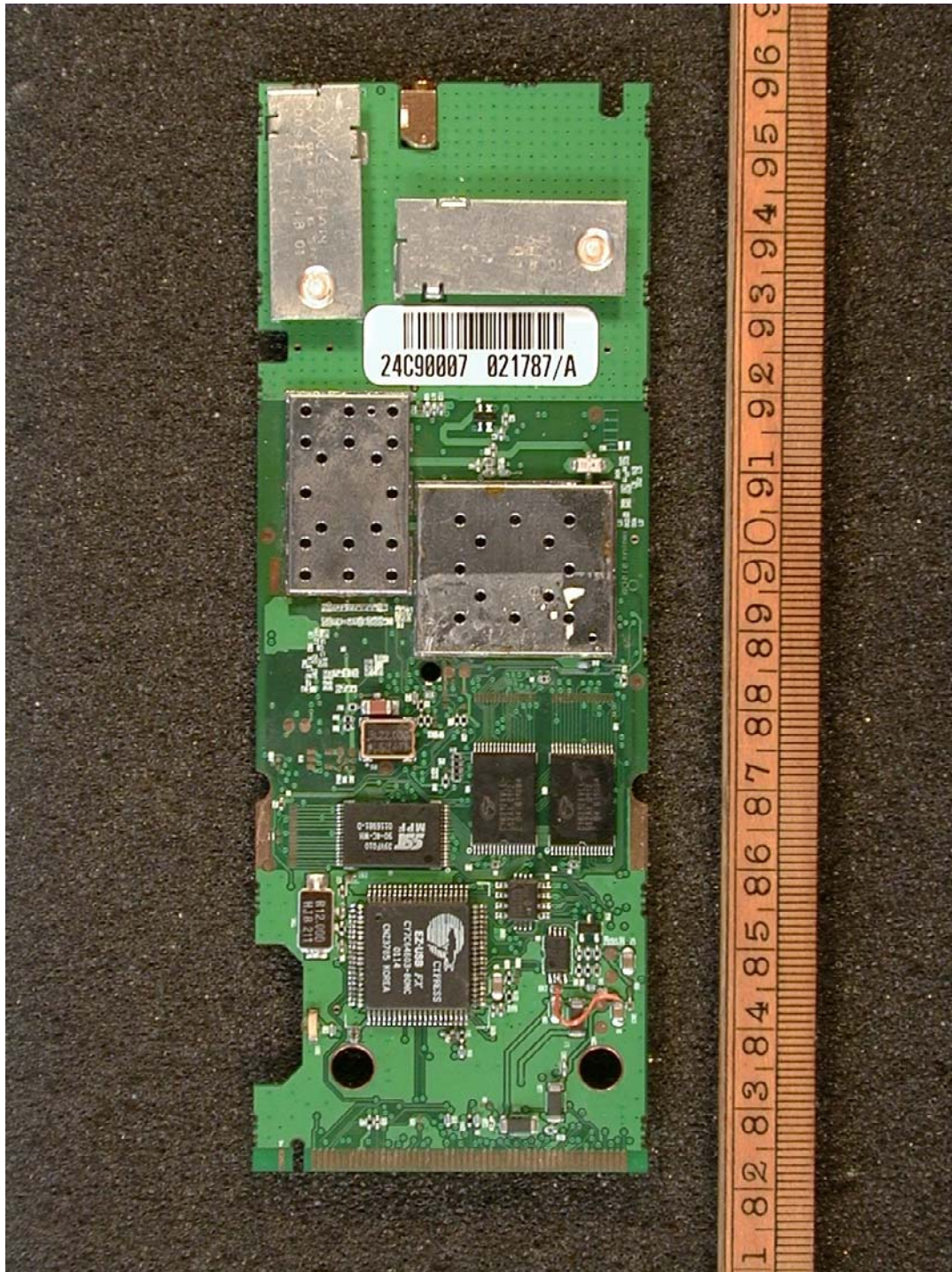


Description of EUT: 2.4 GHz low power WLAN MultiPort card  
Manufacturer: Compaq Computer Corporation  
Brand mark: Compaq  
Type: WA1000  
FCC ID: IMRWA1000

---

## 1 Interior photographs.

### 1.1 Top view PCB (with shielding).

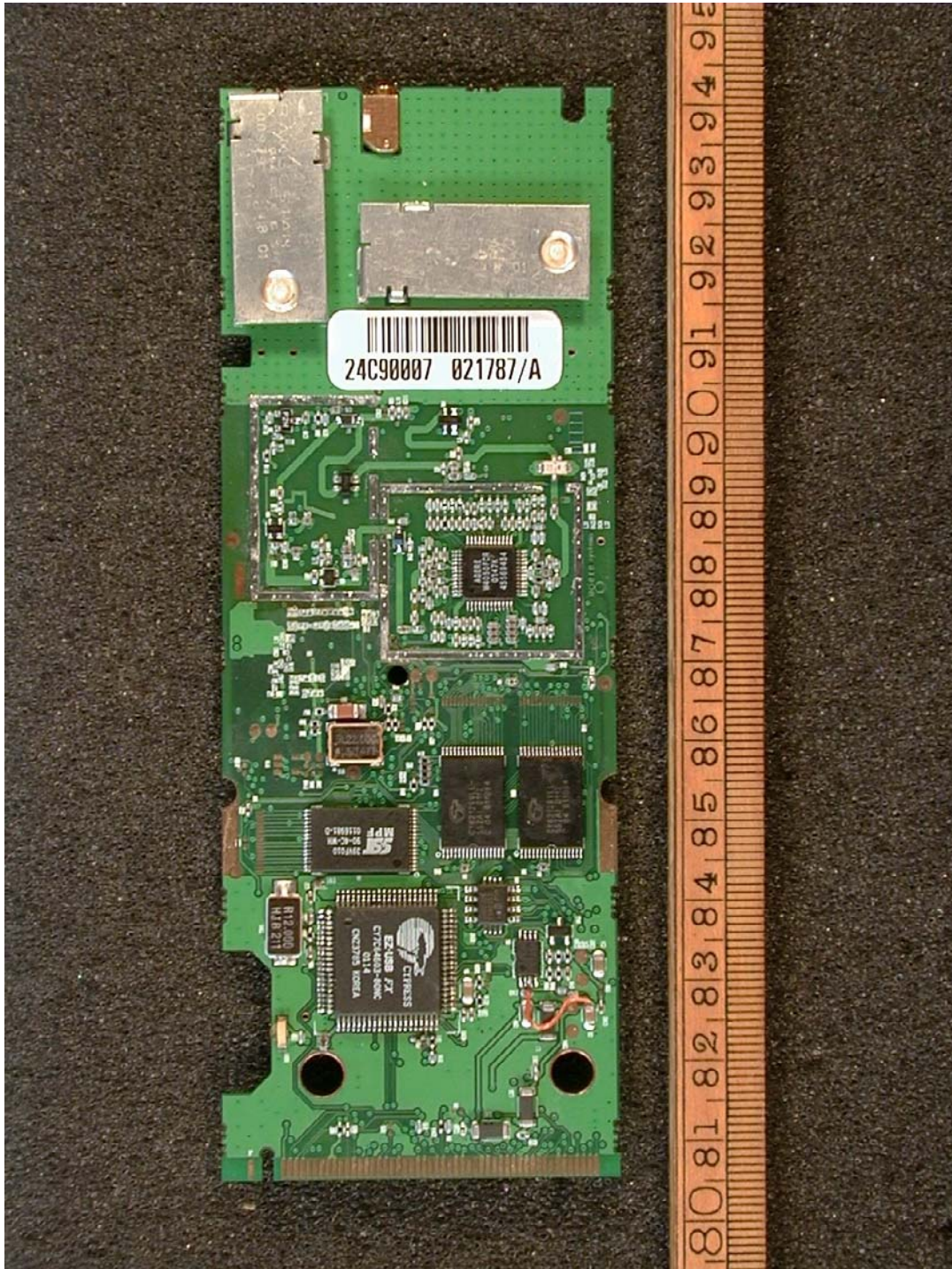




Description of EUT: 2.4 GHz low power WLAN MultiPort card  
Manufacturer: Compaq Computer Corporation  
Brand mark: Compaq  
Type: WA1000  
FCC ID: IMRWA1000

---

## 1.2 Top view PCB (without shielding)

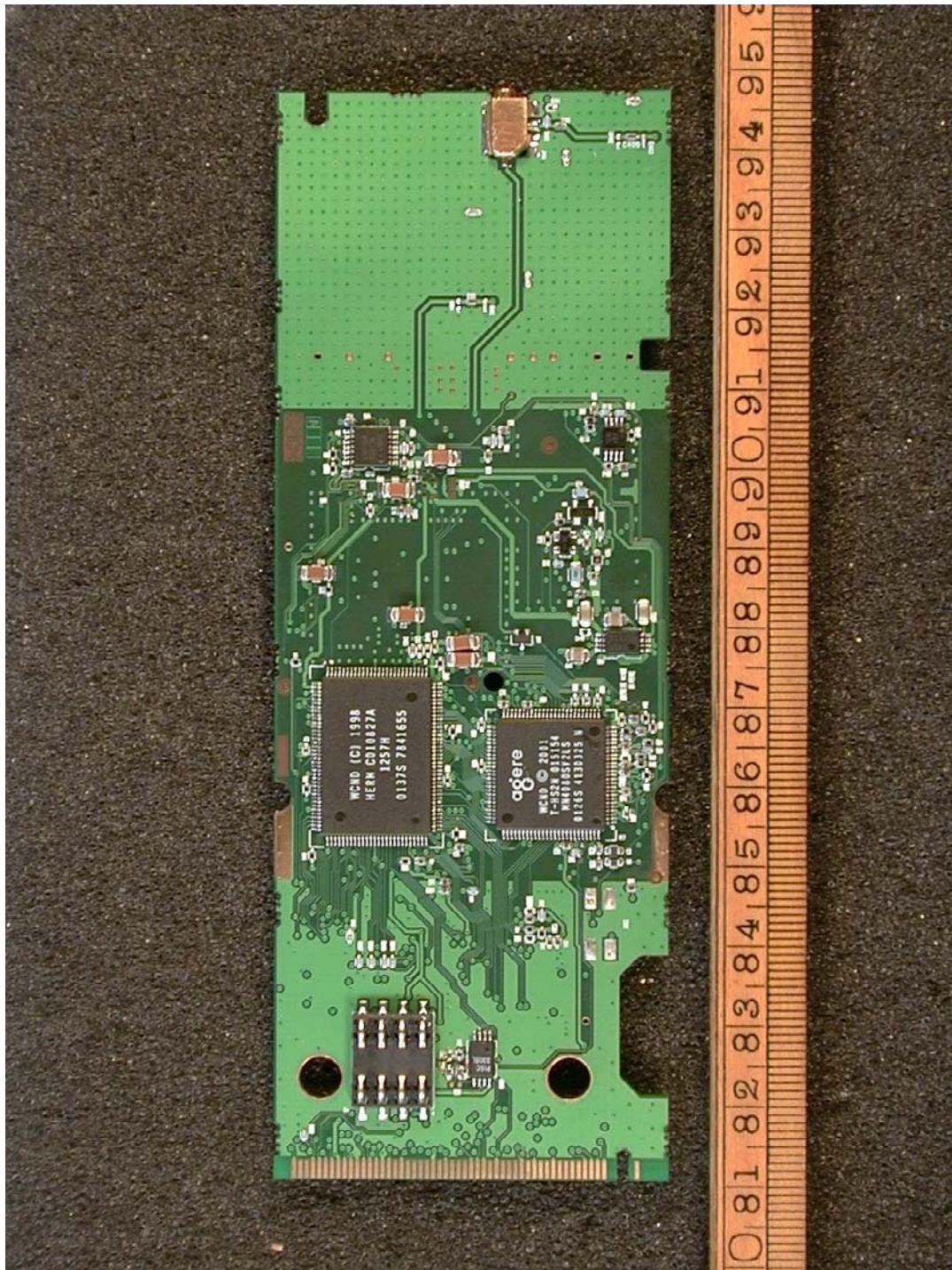




Description of EUT: 2.4 GHz low power WLAN MultiPort card  
Manufacturer: Compaq Computer Corporation  
Brand mark: Compaq  
Type: WA1000  
FCC ID: IMRWA1000

---

### 1.3 Bottom view PCB.

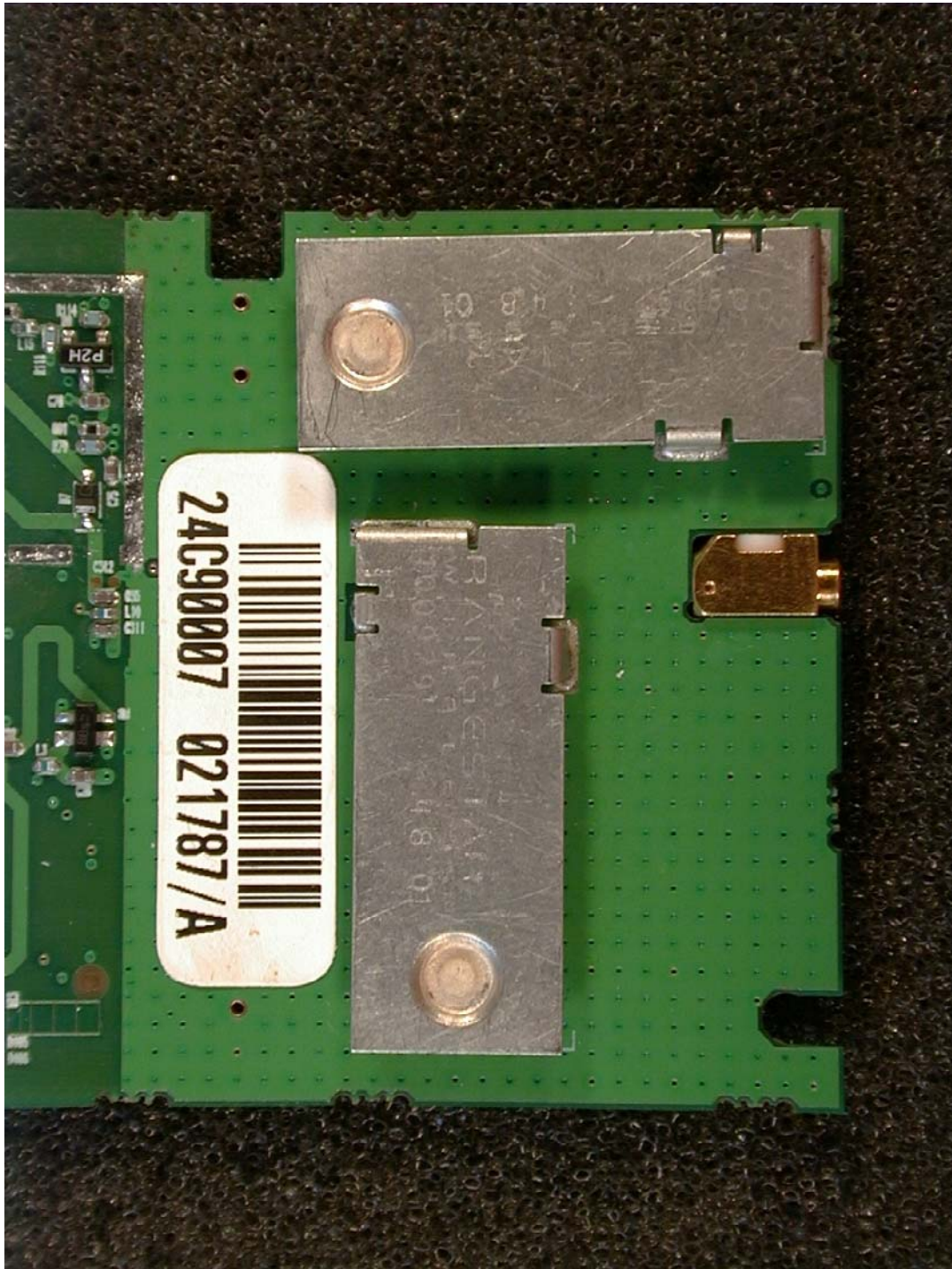




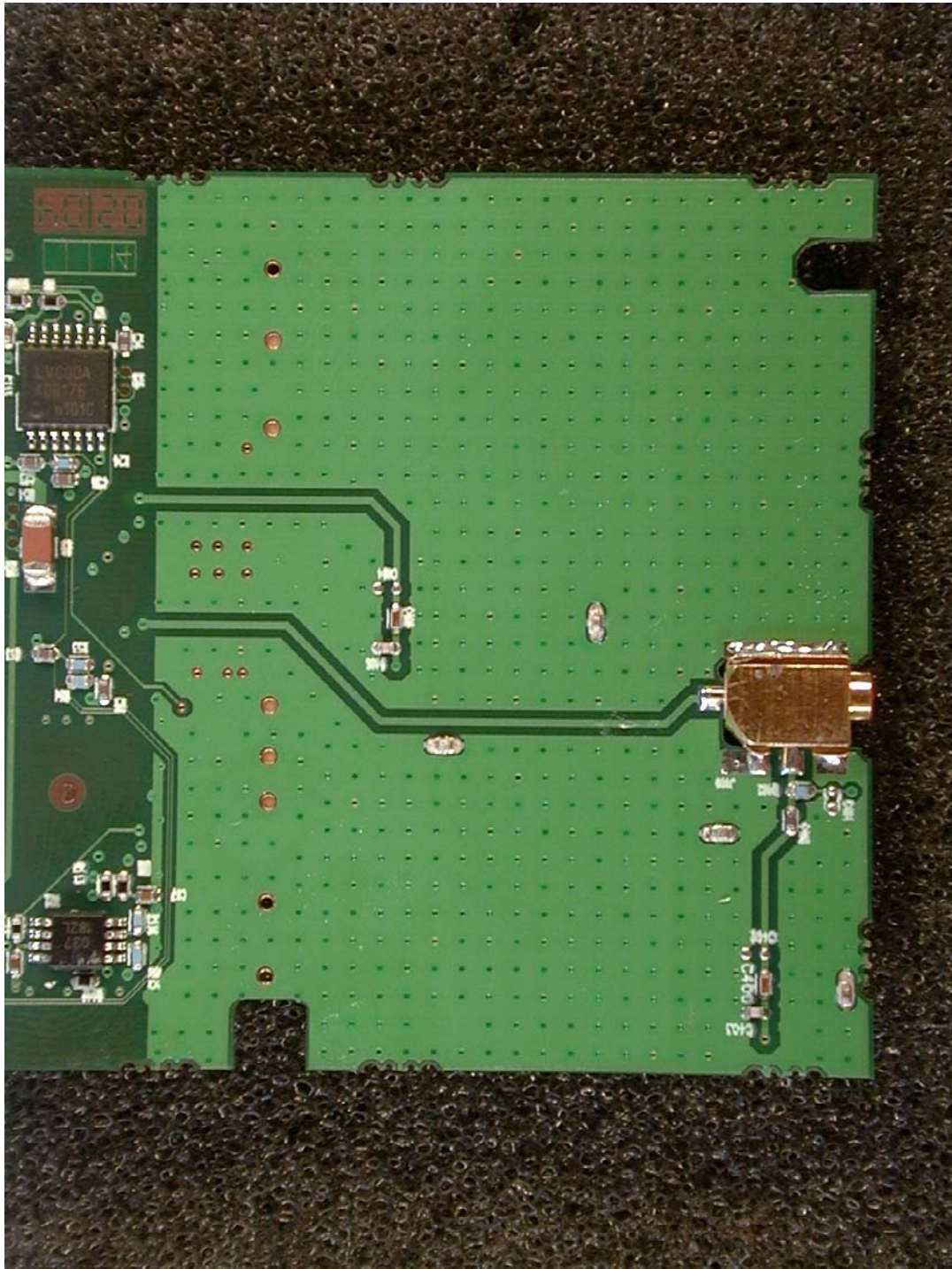
Description of EUT: 2.4 GHz low power WLAN MultiPort card  
Manufacturer: Compaq Computer Corporation  
Brand mark: Compaq  
Type: WA1000  
FCC ID: IMRWA1000

---

#### 1.4 Antenna part of PCB (top).



### 1.5 Antenna part of PCB (bottom).







Description of EUT: 2.4 GHz low power WLAN MultiPort card  
Manufacturer: Compaq Computer Corporation  
Brand mark: Compaq  
Type: WA1000  
FCC ID: IMRWA1000

---

## 1.6 Antenna part of PCB (front).

