



INTERIOR PHOTOGRAPHS OF A 2.4 GHZ LOW POWER WLAN MINIPCI CARD, BRAND AGERE, TYPE MPC13A-20/R, BUILT INTO NOTEBOOK TYPE LATITUDE X200, BRAND DELL.

Accredited by	:STERLAB accreditation number L359 RVC accreditation number C078
Competent body	:Article 10-2 EMC Directive 89/336/EC
Notified body nr. 0336	:Article 10-5 EMC Directive 89/336/EC R&TTE Directive 1999/5/EC Low Voltage Directive 73/23/EC
FCC listed	:31040/SIT
Industry Canada	:IC3501

TNO Physics and Electronics Laboratory
P.O. Box 15
9822 ZG Niekerk (NL)
Smidshornerweg 18
9822 TL Niekerk (NL)

Telephone: +31 594 505005
Telefax: +31 594 504804

E-mail: eps@certi.tno.nl



Description of EUT: 2.4 GHz low power RLAN MiniPCI card
Manufacturer: Agere Systems Nederland B.V.
Brand mark: Agere
Type: MPC13A-20/R built into notebook
type Latitude X200
FCC ID: IMRMPCIDE3

Description of test item

Test item : 2.4 GHz low power RLAN MiniPCI card
built into notebook type Latitude X200
Manufacturer : Agere Systems Nederland B.V.
Brand : Agere
Type : MPC13A-20/R
Serial number : n.a.
Revision : 8U354
Receipt number : 2
Receipt date : March 13, 2002

Applicant information

Applicant's representative : Mr. W. Kerkhof
Company : Agere Systems Nederland B.V.
Address : Zadelstede 1-10
Postal code : 3431 JZ
City : Nieuwegein
PO-box : 755
Postal code : 3430 AT
City : Nieuwegein
Country : The Netherlands
Telephone number : +31 30 609 7534
Telefax number : +31 30 609 7556
Order number : n.a.

This report is in conformity with EN 45001.

This report shall not be reproduced, except in full, without the written permission of TNO Physics and Electronics Laboratory.
The test results relate only to the item(s) tested.



Description of EUT: 2.4 GHz low power RLAN MiniPCI card
Manufacturer: Agere Systems Nederland B.V.
Brand mark: Agere
Type: MPCI3A-20/R built into notebook
type Latitude X200
FCC ID: IMRMPCIDE3

Table of contents

1	Introduction.....	4
2	Interior photographs.....	5
2.1	EUT built into notebook type Latitude X200.....	5
2.2	Total overview of antennas in notebook type Latitude X200.....	6
2.3	Location of front (AUX) antenna in notebook type Latitude X200.....	7
2.4	Location of top antenna of notebook type Latitude X200.....	8
2.5	Top antenna of notebook type Latitude X200.....	9



Description of EUT: 2.4 GHz low power RLAN MiniPCI card
Manufacturer: Agere Systems Nederland B.V.
Brand mark: Agere
Type: MPC13A-20/R built into notebook
type Latitude X200
FCC ID: IMRMPCIDE3

1 Introduction.

The 2.4 GHz low power RLAN MiniPCI card, brand Agere, type MPC13A-20/R, can be built into several types of notebooks, brand Dell.

This document contains photographs of a notebook, type Latitude X200, brand Dell.

The antenna system, which is used in notebook type Latitude X200, brand Dell, is defined as:

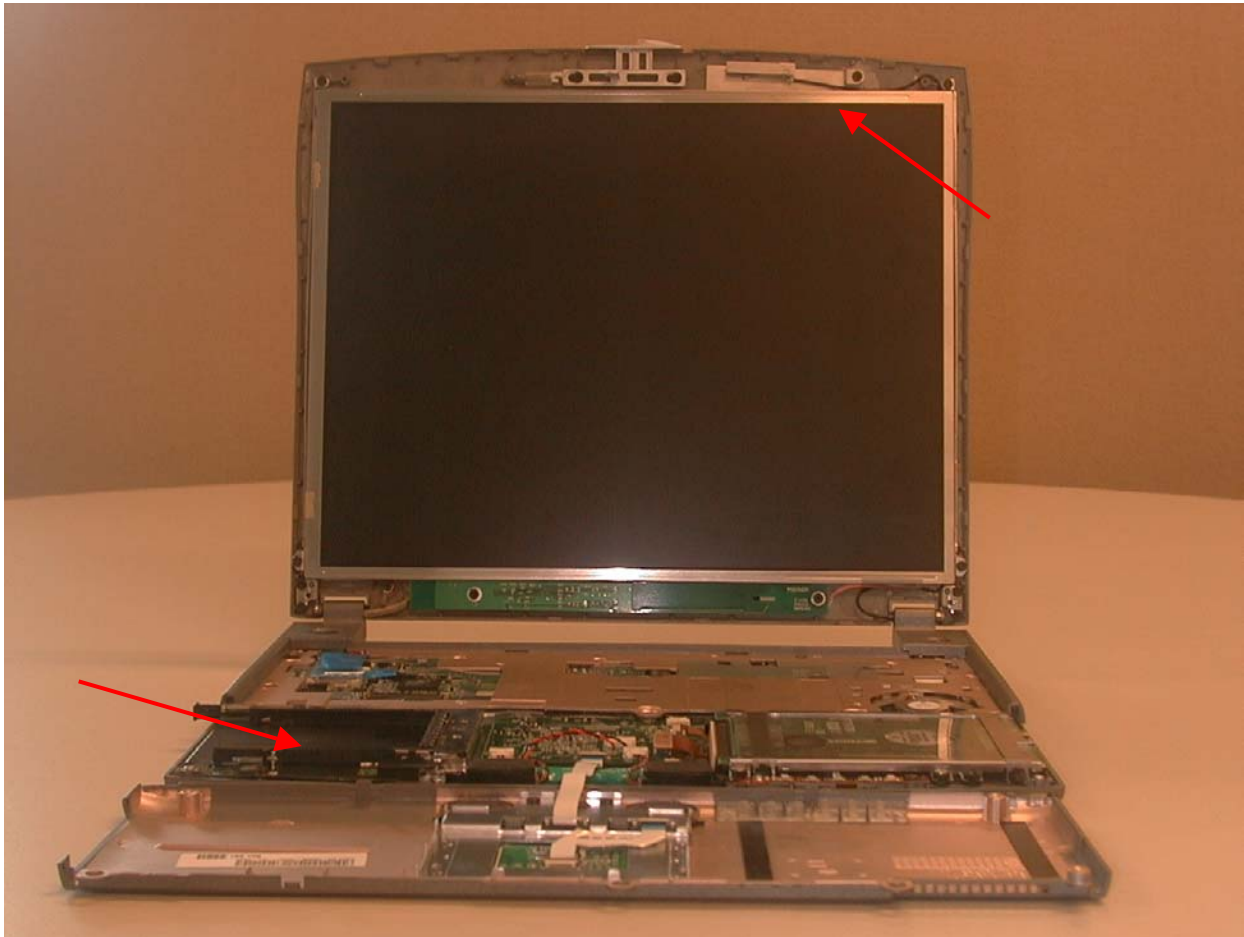
Manufacturer : Amphenol KAE
Peak gain : 0.9 dBi
Type : PIFA

2 Interior photographs.

2.1 EUT built into notebook type Latitude X200.

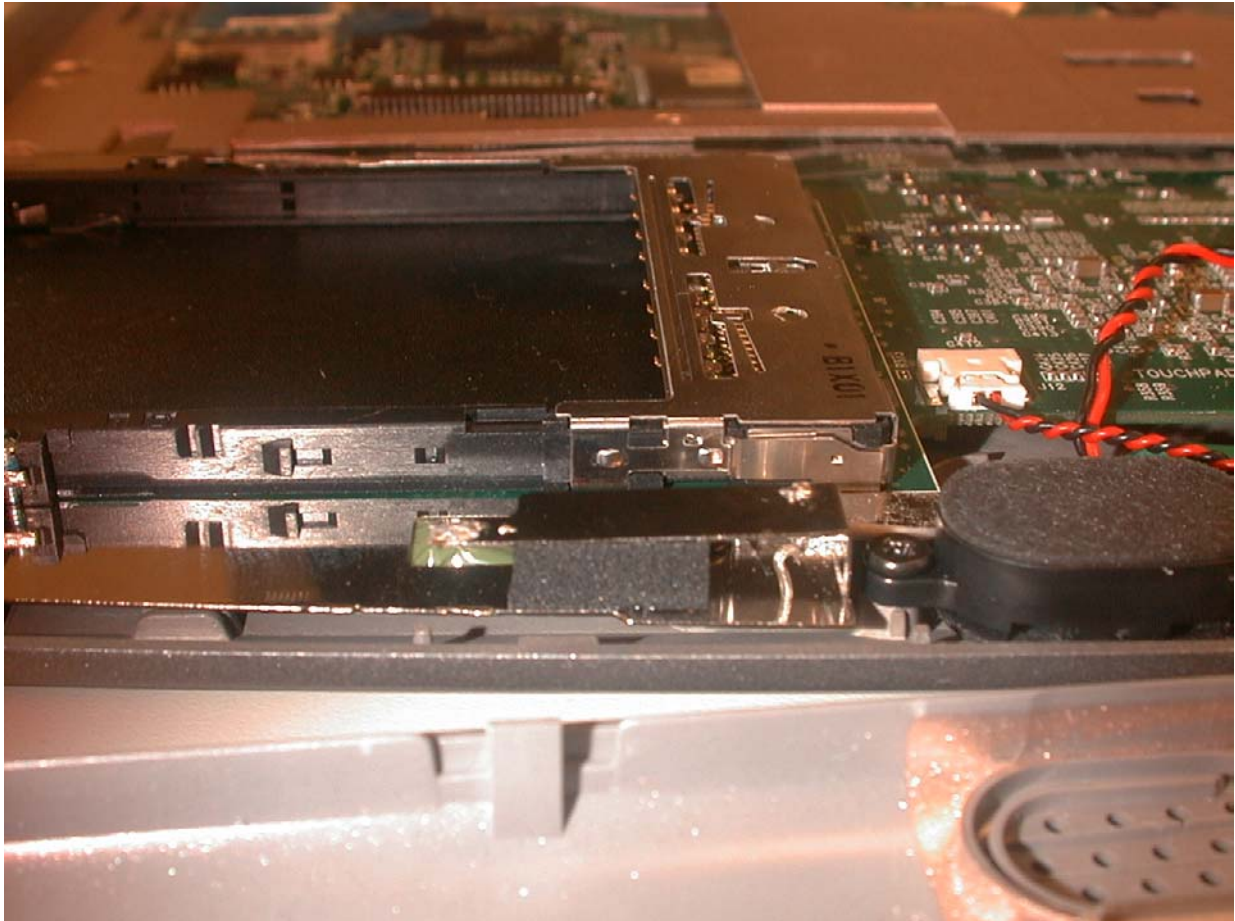


2.2 Total overview of antennas in notebook type Latitude X200.



Note: The red arrows indicate the position of both antennas in notebook type Latitude X200.

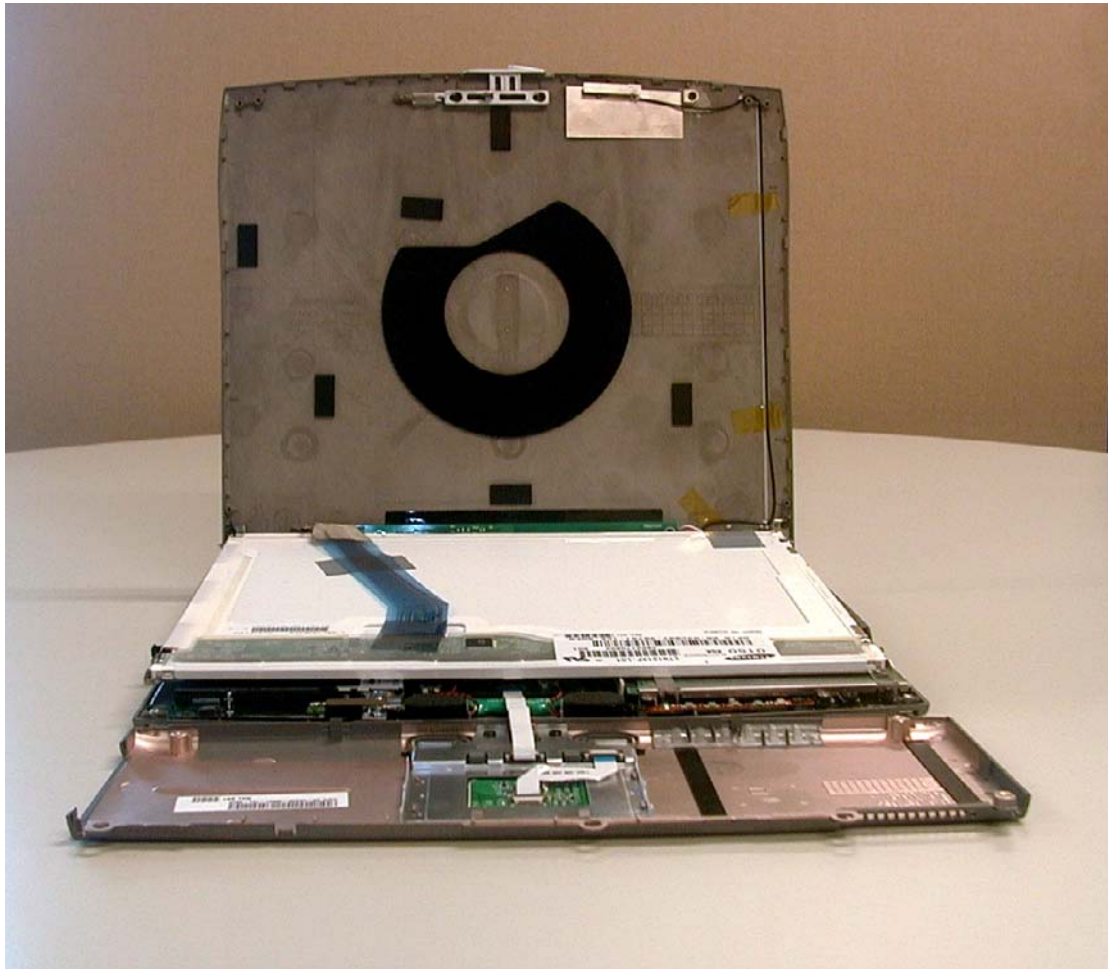
2.3 Location of front (AUX) antenna in notebook type Latitude X200.





Description of EUT: 2.4 GHz low power RLAN MiniPCI card
Manufacturer: Agere Systems Nederland B.V.
Brand mark: Agere
Type: MPC13A-20/R built into notebook
type Latitude X200
FCC ID: IMRMPCIDE3

2.4 Location of top antenna of notebook type Latitude X200.





Description of EUT: 2.4 GHz low power RLAN MiniPCI card
Manufacturer: Agere Systems Nederland B.V.
Brand mark: Agere
Type: MPC13A-20/R built into notebook
type Latitude X200
FCC ID: IMRMPCIDE3

2.5 Top antenna of notebook type Latitude X200.

