



**INTERIOR PHOTOGRAPHS OF A 2.4 GHZ LOW POWER WLAN MINIPCI CARD, BRAND AGERE, TYPE MPC13A-20/R, BUILT INTO NOTEBOOK TYPE INSPIRON 8200, BRAND DELL.**

Accredited by	:STERLAB accreditation number L359 RVC accreditation number C078
Competent body	:Article 10-2 EMC Directive 89/336/EC
Notified body nr. 0336	:Article 10-5 EMC Directive 89/336/EC R&TTE Directive 1999/5/EC Low Voltage Directive 73/23/EC
FCC listed	:31040/SIT
Industry Canada	:IC3501

**TNO Physics and Electronics Laboratory**  
P.O. Box 15  
9822 ZG Niekerk (NL)  
Smidshornerweg 18  
9822 TL Niekerk (NL)

Telephone: +31 594 505005  
Telefax: +31 594 504804

E-mail: [eps@certi.tno.nl](mailto:eps@certi.tno.nl)



Description of EUT: 2.4 GHz low power RLAN MiniPCI card  
Manufacturer: Agere Systems Nederland B.V.  
Brand mark: Agere  
Type: MPC13A-20/R built into notebook  
type Inspiron 8200  
FCC ID: IMRMPCIDE3

---

### **Description of test item**

Test item : 2.4 GHz low power RLAN MiniPCI card  
built into notebook type Inspiron 8200  
Manufacturer : Agere Systems Nederland B.V.  
Brand : Agere  
Type : MPC13A-20/R  
Serial number : n.a.  
Revision : 8U354  
Receipt number : 2  
Receipt date : December 12, 2001

### **Applicant information**

Applicant's representative : Mr. W. Kerkhof  
Company : Agere Systems Nederland B.V.  
Address : Zadelstede 1-10  
Postal code : 3431 JZ  
City : Nieuwegein  
PO-box : 755  
Postal code : 3430 AT  
City : Nieuwegein  
Country : The Netherlands  
Telephone number : +31 30 609 7534  
Telefax number : +31 30 609 7556  
Order number : n.a.

This report is in conformity with EN 45001.

This report shall not be reproduced, except in full, without the written permission of TNO Physics and Electronics Laboratory.  
The test results relate only to the item(s) tested.



Description of EUT: 2.4 GHz low power RLAN MiniPCI card  
Manufacturer: Agere Systems Nederland B.V.  
Brand mark: Agere  
Type: MPCI3A-20/R built into notebook  
type Inspiron 8200  
FCC ID: IMRMPCIDE3

---

## **Table of contents**

1	Introduction. ....	4
2	Interior photographs. ....	5
2.1	EUT built into notebook type Inspiron 8200. ....	5
2.2	Location of antenna system of notebook type Inspiron 8200. ....	6
2.3	Details of antenna system of notebook type Inspiron 8200. ....	7



Description of EUT: 2.4 GHz low power RLAN MiniPCI card  
Manufacturer: Agere Systems Nederland B.V.  
Brand mark: Agere  
Type: MPCI3A-20/R built into notebook  
type Inspiron 8200  
FCC ID: IMRMPCIDE3

---

## 1 Introduction.

The 2.4 GHz low power RLAN MiniPCI card, brand Agere, type MPCI3A-20/R, can be built into several types of notebooks, brand Dell.

This document contains photographs of a notebook, type Inspiron 8200, brand Dell. The antenna system in this type of notebook is identical to the antenna system as used in notebook type Latitude C840, brand Dell.

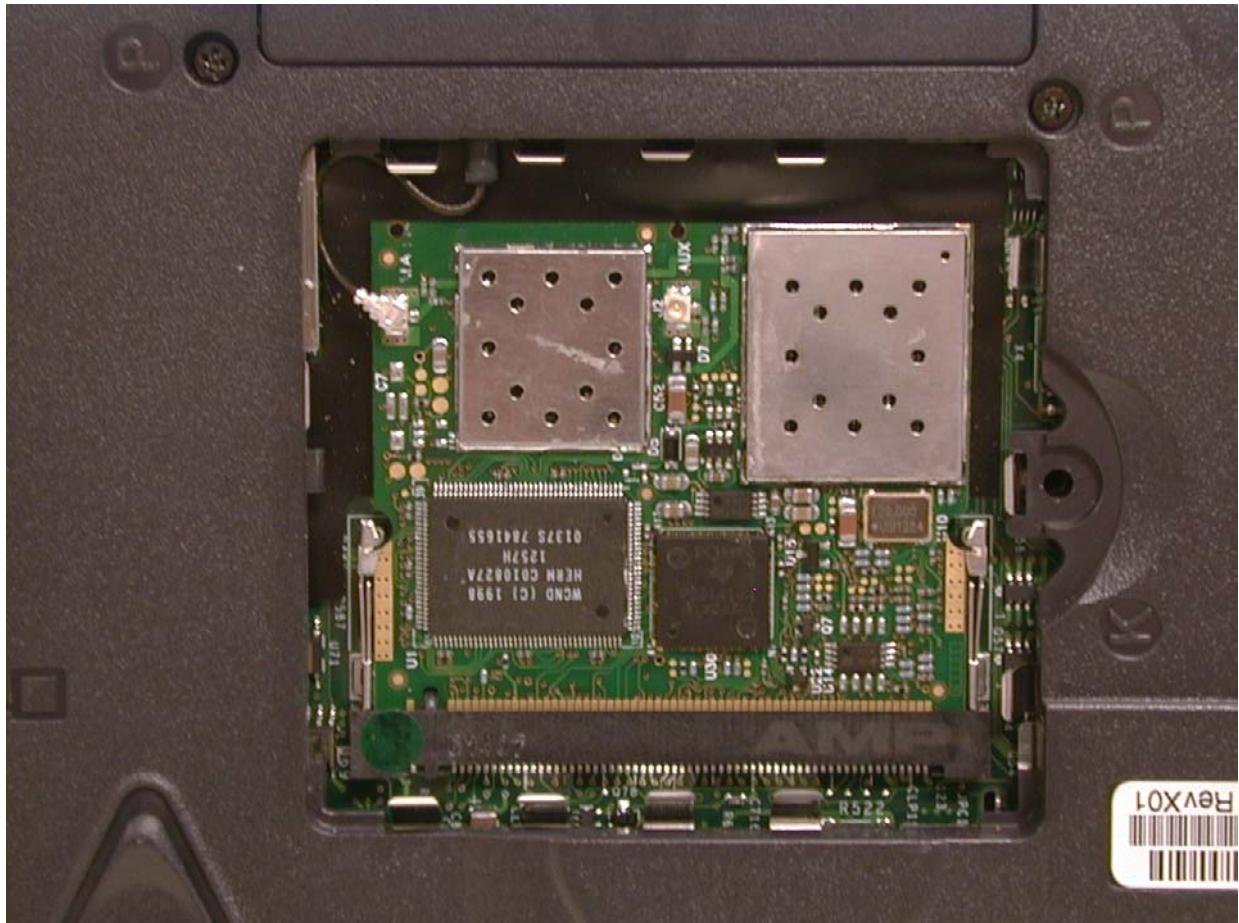
The antenna system, which is used in notebook types Inspiron 8200 and Latitude C840, brand Dell, is defined as:

Manufacturer : Centurion  
Peak gain : 2.1 dBi  
Type : CAF95927

Manufacturer : Foxconn  
Peak gain : 2.1 dBi  
Type : FX-01L14-00

## 2 Interior photographs.

### 2.1 EUT built into notebook type Inspiron 8200.

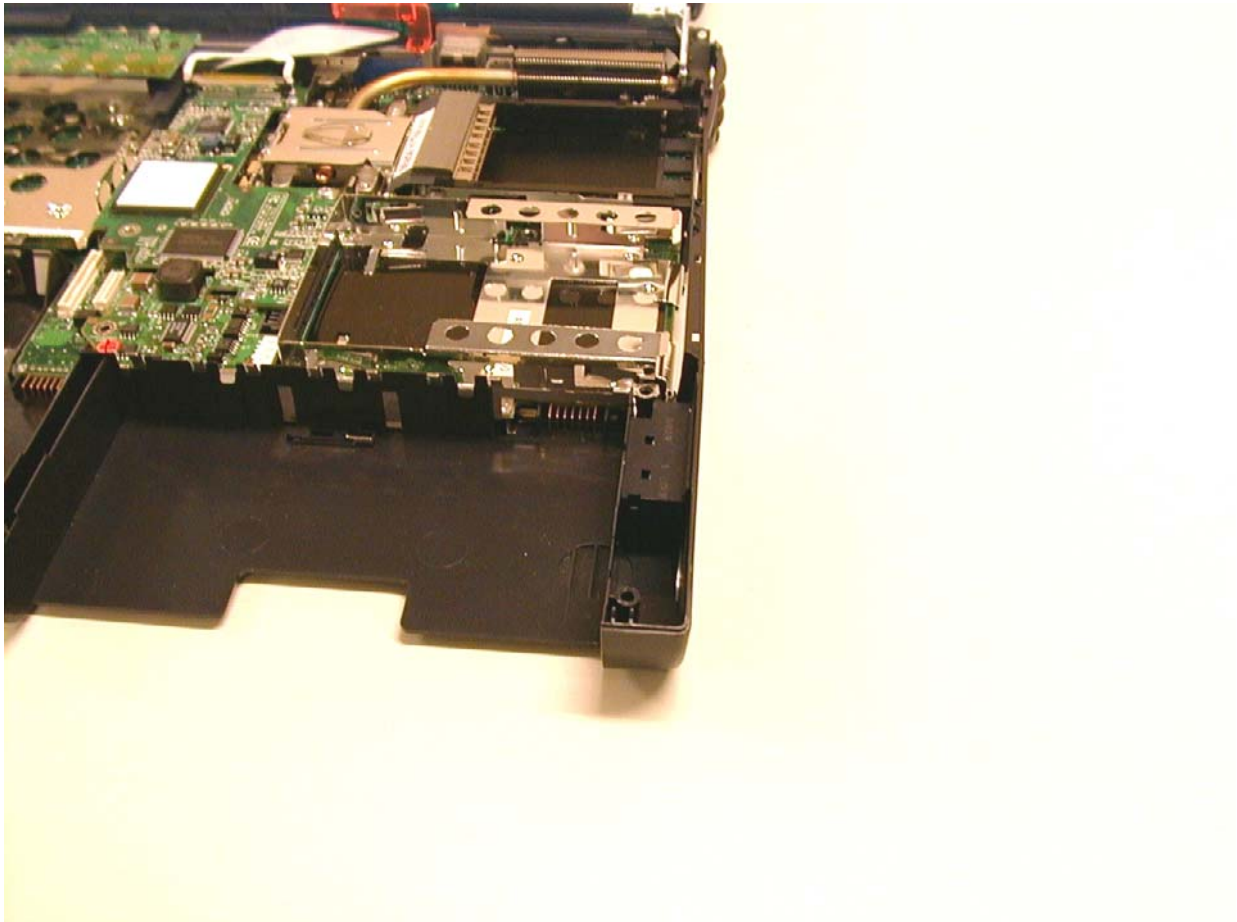




Description of EUT: 2.4 GHz low power RLAN MiniPCI card  
Manufacturer: Agere Systems Nederland B.V.  
Brand mark: Agere  
Type: MPC13A-20/R built into notebook  
type Inspiron 8200  
FCC ID: IMRMPCIDE3

---

## 2.2 Location of antenna system of notebook type Inspiron 8200.

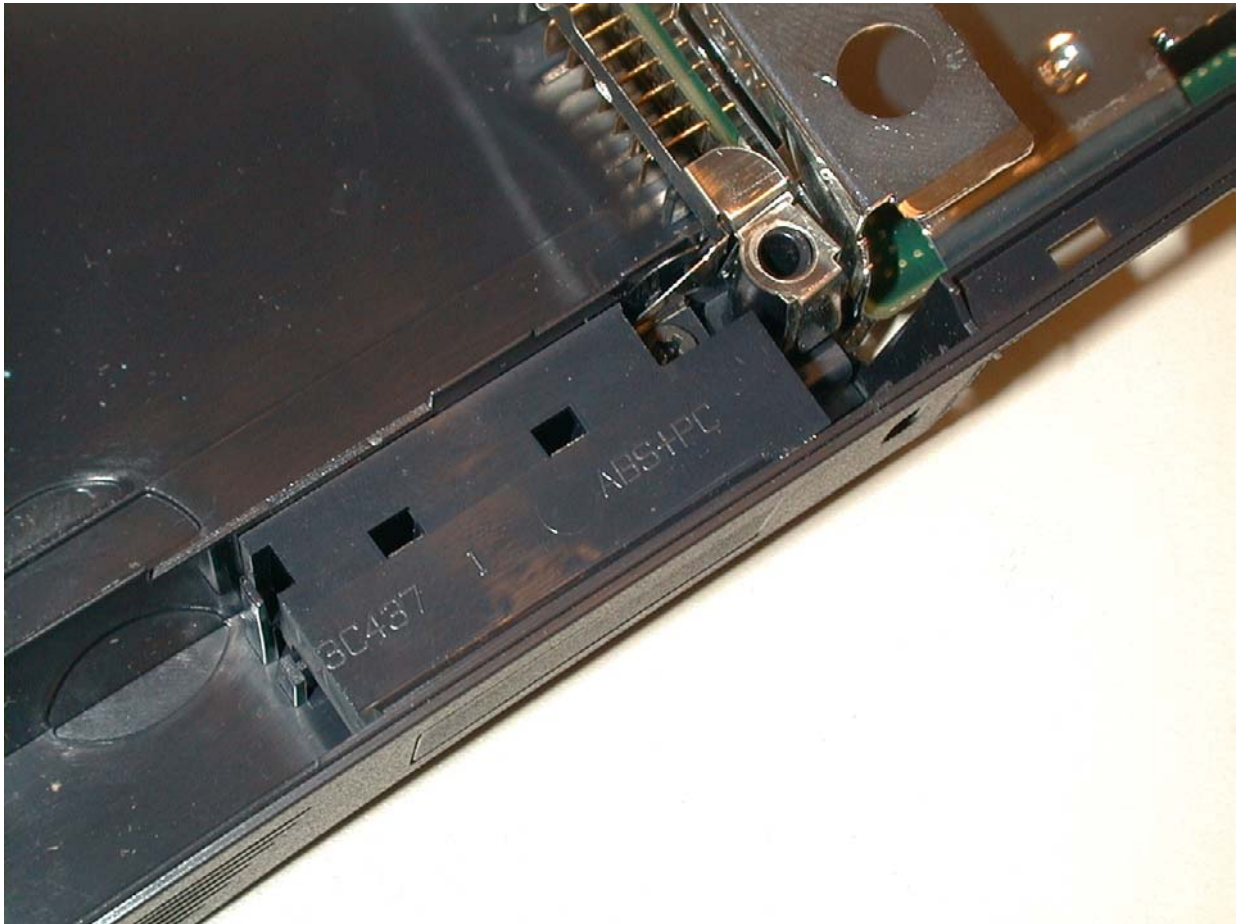




Description of EUT: 2.4 GHz low power RLAN MiniPCI card  
Manufacturer: Agere Systems Nederland B.V.  
Brand mark: Agere  
Type: MPC13A-20/R built into notebook  
type Inspiron 8200  
FCC ID: IMRMPCIDE3

---

### 2.3 Details of antenna system of notebook type Inspiron 8200.

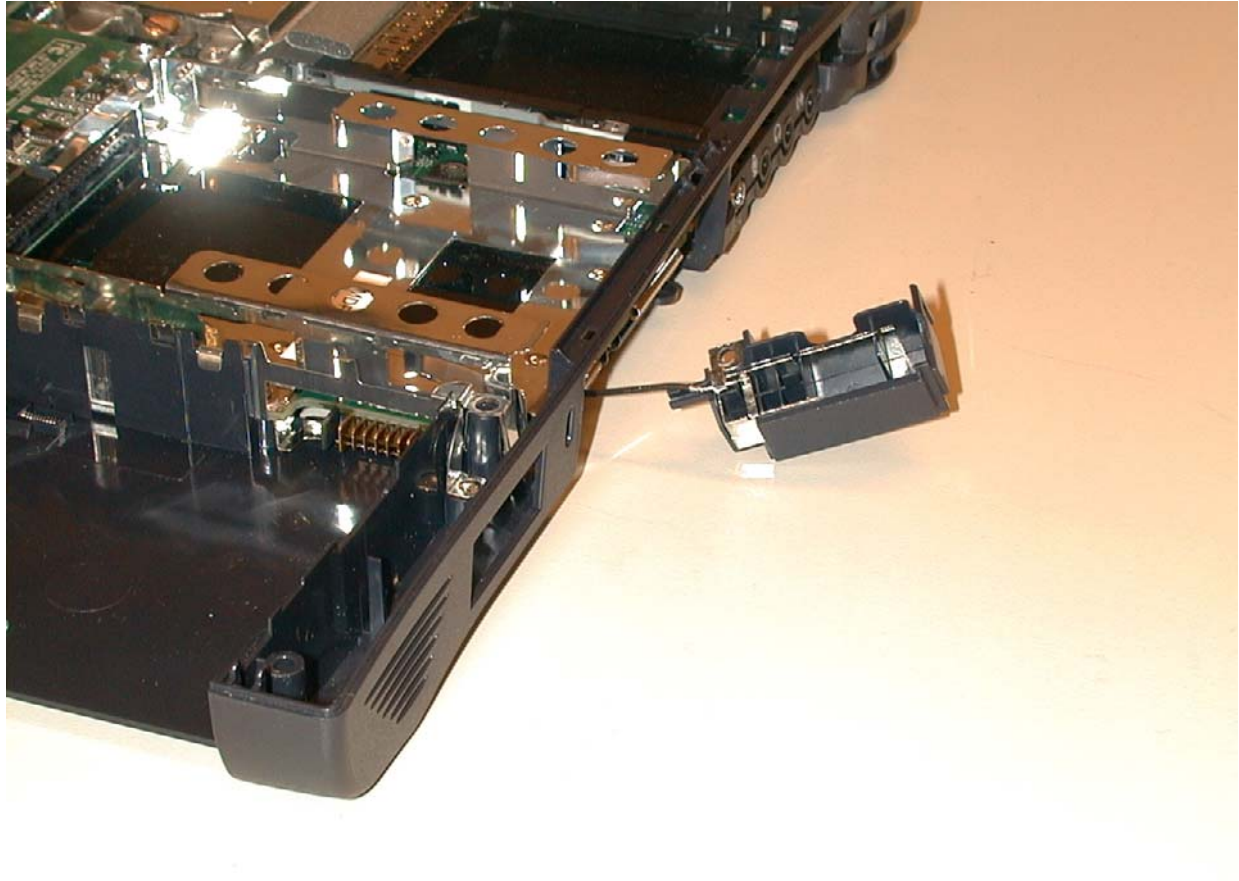






Description of EUT: 2.4 GHz low power RLAN MiniPCI card  
Manufacturer: Agere Systems Nederland B.V.  
Brand mark: Agere  
Type: MPC13A-20/R built into notebook  
type Inspiron 8200  
FCC ID: IMRMPCIDE3

---

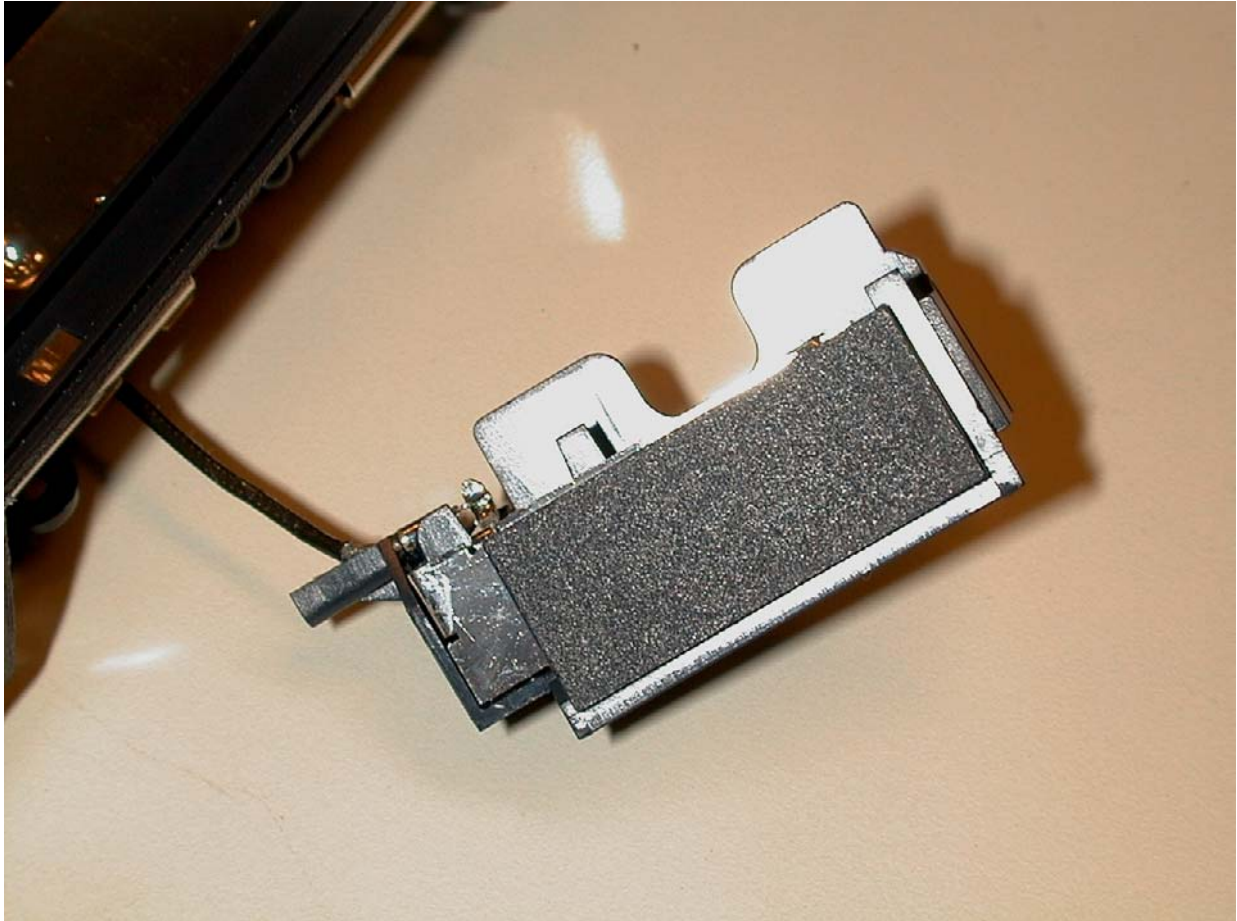






Description of EUT: 2.4 GHz low power RLAN MiniPCI card  
Manufacturer: Agere Systems Nederland B.V.  
Brand mark: Agere  
Type: MPC13A-20/R built into notebook  
type Inspiron 8200  
FCC ID: IMRMPCIDE3

---





Description of EUT: 2.4 GHz low power RLAN MiniPCI card  
Manufacturer: Agere Systems Nederland B.V.  
Brand mark: Agere  
Type: MPC13A-20/R built into notebook  
type Inspiron 8200  
FCC ID: IMRMPCIDE3

---

