



**TEST REPORT OF A 2.4/5 GHZ IEEE 802.11a/g WLAN
CARDBUS CARD, BRAND AGERE, MODEL 1102, IN
CONFORMITY WITH FEDERAL REGULATED SAR
(SPECIFIC ABSORPTION RATE) REQUIREMENTS IN
THE USA AND CANADA.**

FCC listed : 90828
Industry Canada : IC3501
VCCI registered : R-1518, C-1598

TNO Electronic Products & Services (EPS) B.V.
P.O. Box 15
9822 ZG Niekerk (NL)
Smidshornerweg 18
9822 TL Niekerk (NL)

Telephone: +31 594 505005
Telefax: +31 594 504804

E-mail: info@eps.tno.nl
Web: www.eps.tno.nl



Test specification(s): FCC/CA SAR Requirements
Description of EUT: 2.4/5 GHz IEEE 802.11g/a WLAN Cardbus card
Manufacturer: Agere Systems Netherlands BV
Brand mark: Agere
Model: 1102
FCC ID: IMRCB1102





Description of test item

Test item : 2.4/5 GHz IEEE 802.11g/a WLAN Cardbus card
Manufacturer : Agere Systems Nederland B.V.
Brand : Agere
Model : 1102
Serial numbers : 03UT38900028
Revision : B1
Receipt number : 1
Receipt date : November 17, 2003

Applicant information

Applicant's representative : Mr. W. Kerkhof
Company : Agere Systems Nederland B.V.
Address : Zadelstede 1-10
Postal code : 3431 JZ
City : Nieuwegein
PO-box : 755
Postal code : 3430 AT
City : Nieuwegein
Country : The Netherlands
Telephone number : +31 30 609 7534
Telefax number : +31 30 609 7556

Test(s) performed

Location : Niekerk
Test(s) started : November 17, 2003
Test(s) completed : December 11, 2003
Purpose of test(s) : To verify compliance with Federal regulated SAR requirements in the US and Canada
Test specification(s) : IEEE C95.1-1991, FCC OET Bulletin 65 (Supplement C), Industry Canada RSS-102 (Issue 1)
Test engineer : J. Schuurmans, B.Sc.E.E. 
Project leader : H.J. Pieters 
Report written by : J. Schuurmans, B.Sc.E.E. 
Report approved by : P. de Beer 
Report date : December 17, 2003

This report is in conformity with NEN-EN-ISO/IEC 17025: 2000.

This report shall not be reproduced, except in full, without the written permission of TNO Electronic Products & Services (EPS) B.V.
The test results relate only to the item(s) tested.



Table of contents

1	General.....	5
1.1	Purpose of tests.....	5
1.2	Applied standards/publications.....	5
1.3	References.....	5
2	Summary and conclusion.....	6
2.1	Exposure category.....	6
2.2	Summary of results.....	6
2.3	Compliance.....	6
3	Identification of Equipment Under Test (EUT).....	7
3.1	Equipment under Test (EUT) details.....	7
3.2	EUT test operating configurations.....	7
3.3	Additional operating configurations.....	8
4	Test conditions.....	8
4.1	Environmental conditions.....	8
4.2	System performance check 2.4 GHz.....	8
4.2.1	2450 MHz validation parameters.....	11
4.3	System validation on 5.8 GHz.....	12
4.3.1	5800 MHz validation parameters.....	13
4.4	Measured maximum output power of EUT.....	13
4.4.1	Measured Average power on 2.4 GHz.....	13
4.4.2	Measured Average Power on 5 GHz.....	14
4.5	Tissue simulating liquid dielectric parameters.....	14
4.5.1	Mixing procedures.....	14
4.5.2	Dielectric parameters for 2.4 GHz, body tissue.....	15
4.5.3	Dielectric parameters for 2.4GHz, head tissue.....	16
4.5.4	Dielectric parameters for 5 GHz body tissue.....	17
4.5.5	Dielectric parameters for 5GHz, head tissue.....	18
4.5.6	Tissue simulating liquid temperature requirements.....	19
5	Photographs of EUT in host.....	19
6	Identification of EUT-Phantom positions.....	21
6.1	Portable Device operating near the body.....	21
6.1.1	Position perpendicular.....	21
6.1.2	Position lapheld.....	22
7	Test Results.....	23
7.1	Step size and scan information.....	23
8	Plots of measurement data.....	24
8.1	Validation 2.4 GHz.....	25
8.2	Validation 5 GHz.....	26
8.3	Channel 6 Lapheld.....	27
8.4	Channel 48 Perpendicular.....	28
8.4.1	Results.....	28
8.5	Channel 64 Perpendicular.....	29
8.5.1	Results.....	29
8.6	Channel 149.....	30
8.7	Hotspot identification.....	31



9	Description of test configuration	33
9.1	SAR measurement system	33
9.1.1	Robot System description	33
9.1.2	Probe description	34
9.1.3	Amplifier description	34
9.1.4	Phantom description.....	34
9.2	Measurement Procedure.....	34
9.2.1	SARA2 Interpolation and Extrapolation schemes.....	35
9.2.2	Interpolation of 2D area scan.....	35
9.2.3	Extrapolation of 3D scan	35
9.2.4	Interpolation of 3D scan and volume averaging.....	35
10	Additional information supplementary to the test report.....	37
10.1	Probe information	37
10.2	SAR system check	37
10.3	5.8 GHz system check.....	38
10.3.1	Introduction	38
10.3.2	Validation results using WR187 waveguide.....	39
10.3.3	An alternative open-ended waveguide geometry	39
10.4	Dielectric property measurement of tissue-simulant liquids for SAR testing	41
10.4.1	Introduction	41
10.4.2	TEM-cell construction	41
10.4.3	Calculation of dielectric properties from VNA measurements	41
10.5	Measurement uncertainty.....	43
10.5.1	Introduction.....	43
10.5.2	Uncertainty calculated for IEEE1528 : standard measurements (2450 MHz)	44
10.5.3	Uncertainty calculated for IEEE1528 : standard measurements (5800 MHz)	45
10.5.4	Uncertainty calculated for IEEE1528 : System performance check (2450 MHz)	46
10.5.5	Uncertainty calculated for IEEE1528 : System performance check (5800 MHz)	47
11	List of utilized test equipment	48
12	Test software.....	48

Annexes:

- Calibration Certificate Dosimetric E-field Probe.
- Immersible SAR probe calibration report IXP – 050 S/N 0131
- IndexSAR report no. IXS-0223, Compensating for the finite size of SAR probes used in electric field gradients



Test specification(s): FCC/CA SAR Requirements
Description of EUT: 2.4/5 GHz IEEE 802.11g/a WLAN Cardbus card
Manufacturer: Agere Systems Netherlands BV
Brand mark: Agere
Model: 1102
FCC ID: IMRCB1102

1 General.

1.1 Purpose of tests.

Tests were conducted to verify compliance with Federal regulated SAR requirements in the US and Canada.

1.2 Applied standards/publications.

The Equipment Under Test (EUT) was tested in conformity with the described test method(s) in the following Standards and/or publications:

- IEEE Std C95.1-1999 edition: IEEE Standard for Safety Levels with Respect to Human Exposure to Radio Frequency Electromagnetic Fields, 3kHz to 300GHz
- FCC OET Bulletin 65 (Supplement C) edition 01-01: Evaluating Compliance with FCC Guidelines for Human Exposure to radio Frequency Fields. Additional information for evaluating Compliance of Mobile and Portable Devices with FCC limits for Human Exposure to Radiofrequency Emissions.
- Industry Canada RSS-102 (Issue 1).

1.3 References.

The methods and procedures applicable to measurements as performed and indicated in this test report are also described in detail in the following reference documents:

Publications	Year	Title
IEEE Std. 1528	2003	Recommended Practice for Determining the Peak Spatial-Average Specific Absorption rate (SAR) in the Human Head from Wireless Communications Devices: Measurement Techniques.
FCC OET Bulletin 65, Edition 97-01	1997	Evaluating Compliance with FCC Guidelines for Human Exposure to radio Frequency Fields
ANSI/IEEE C95.3	2002	IEEE Recommended Practice for the Measurement and Computations of Radio Frequency Electromagnetic Fields With Respect to Human Exposure to Such Fields, 100kHz-300GHz



Test specification(s): FCC/CA SAR Requirements
Description of EUT: 2.4/5 GHz IEEE 802.11g/a WLAN Cardbus card
Manufacturer: Agere Systems Netherlands BV
Brand mark: Agere
Model: 1102
FCC ID: IMRCB1102

2 Summary and conclusion.

2.1 Exposure category.

The EUT is a portable device used near the body.

According to the characteristics of the EUT and typical application and usage in accordance with the relevant product specifications of the manufacturer the EUT is identified to the exposure category:

General population/Uncontrolled exposure.

2.2 Summary of results.

In the 2.4 GHz frequency range, the maximum peak spatial-average SAR measured was **0.331 W/Kg** averaged over 1g with an EUT power level of 14.9 dBm while the EUT was positioned such that the base of the laptop was touching the phantom and the card was transmitting on 2437 MHz (channel 6).

In the 5 GHz frequency range (5150 – 5350 MHz) the maximum peak spatial-average SAR measured was **0.568 W/Kg** averaged over 1g with a EUT power level of 13 dBm, while the EUT was positioned perpendicularly with the phantom such that the side of the card was touching the phantom and transmitting on 5240 MHz (channel 48).

In the 5 GHz frequency range (5745 – 5825 MHz) the maximum peak spatial-average SAR measured was **0.116 W/Kg** averaged over 1g with a EUT power level of 6.6 dBm, while the EUT was positioned perpendicularly with the phantom such that the side of the card was touching the phantom and transmitting on 5745 MHz (channel 149).

2.3 Compliance.

The equipment was found to be compliant with requirements of standards as indicated in the table below:

Exposure Category and SAR Limits	Test Requirements	Compliance (Yes/No)
General population/Uncontrolled exposure Under normal use conditions hands, wrist ,feet and ankles may touch the hotspot near the transmit antenna, as long as Peak Spatial-Average SAR does not exceed 4 W/kg, averaged over 10 grams of tissue. Whole body average is measured more than 15 mm away from the hotspot.	Requirements using guidelines established in IEEE C95.1-1991	Yes/ no
	FCC OET Bulletin 65 (Supplement C)	Yes/ no
	Industry Canada RSS-102 (Issue 1).	Yes/ no
Occupational/Controlled Exposure 0.4W/kg whole body average and spatial peak SAR of 8W/kg, averaged over 1gram of tissue hands, wrist, feet and ankles have a peak SAR not to exceed 20 W/kg, averaged over 10 grams of tissue.	Requirements using guidelines established in IEEE C95.1-1991	N.a.
	FCC OET Bulletin 65 (Supplement C)	N.a.
	Industry Canada RSS-102 (Issue 1).	N.a.



Test specification(s): FCC/CA SAR Requirements
Description of EUT: 2.4/5 GHz IEEE 802.11g/a WLAN Cardbus card
Manufacturer: Agere Systems Netherlands BV
Brand mark: Agere
Model: 1102
FCC ID: IMRCB1102

3 Identification of Equipment Under Test (EUT).

The following is the information provided by the applicant.

3.1 Equipment under Test (EUT) details.

Description	Model number	Serial number	FCC ID	Cable descriptions
2.4/5 GHz IEEE 802.11g/a WLAN Cardbus card	1102	03UT38900028	IMRCB1102	None.
Dell notebook computer	PP01L	TW-0791UH-12800-154-6532	IMRMPCIDE1	-none (laptop is operated on batteries)

3.2 EUT test operating configurations.

Modulation type/ operating modes : DSSS (1, 2, 5.5, 11 MBit/s), OFDM (6, 9, 11, 54 MBit/s), BPSK, QPSK, 16QAM, 64 QAM
Operating frequency range : 2400-2483.5 MHz (13 channels)
5180 -5320 MHz (14 channels), 5745-5825 MHz (11 channels)
Maximum indicated power : 10.8 dBm typically 5180 MHz – 5320 MHz
14.9 dBm conducted @ 2.4 GHz
6.6 dBm conducted @ 5745-5825 MHz
Duty cycle during testing : 100%
Antenna type(s) and gain : Integral, gain +1.3 dBi @ 2.4 GHz, gain +1.4 dBi @ 5 GHz
Power supply/ power source : The notebook is battery operated
Primary User Functions of EUT : Data Radio Communication through Air
EUT Accessories : See section 3.1
Hardware/software changes applied for testing : EUT is made to transmit with 100% duty cycle, by means of specific test software supplied by applicant.



Test specification(s): FCC/CA SAR Requirements
Description of EUT: 2.4/5 GHz IEEE 802.11g/a WLAN Cardbus card
Manufacturer: Agere Systems Netherlands BV
Brand mark: Agere
Model: 1102
FCC ID: IMRCB1102

3.3 Additional operating configurations.

Power and signal distribution, grounding, interconnecting cabling and physical placement of the EUT under circumstances of testing at the test system are in accordance with the typical application and usage in so far as is practicable, and is in accordance with the relevant product specifications of the manufacturer.

The configuration of the EUT and its position are fully detailed and documented in the test report.

4 Test conditions.

4.1 Environmental conditions.

Requirement for	Specification	Determined value
Ambient temperature	+18°C to +25°C Temperature shall not exceed ± 2 °C during the test	+19.0 °C at start to +21.0 °C at end of test
Ambient humidity	20% to 75%	35 to 49 %
Electro Magnetic environment	the ambient interference power shall be less than 0,012 W/kg	below the required lower detection limit of 0,010 W/kg, checked before and after test

4.2 System performance check 2.4 GHz.

The purpose of the system performance check (*system check*) is to verify that the system operates within its specifications at the device test frequency. The system check is to make sure that the system works correctly at the time of the compliance test. The system check has been performed using the specified tissue-equivalent liquid and at a chosen fixed frequency that is within $\pm 10\%$ of the compliance test mid-band frequency. The system check is performed prior to compliance tests and the result must always be within $\pm 10\%$ of the target value corresponding to the test frequency, liquid and the source used. In section 10.3 a description of this check is given. Below photographs of the 2.4 and 5 GHz check instrument setup and validation dipoles.

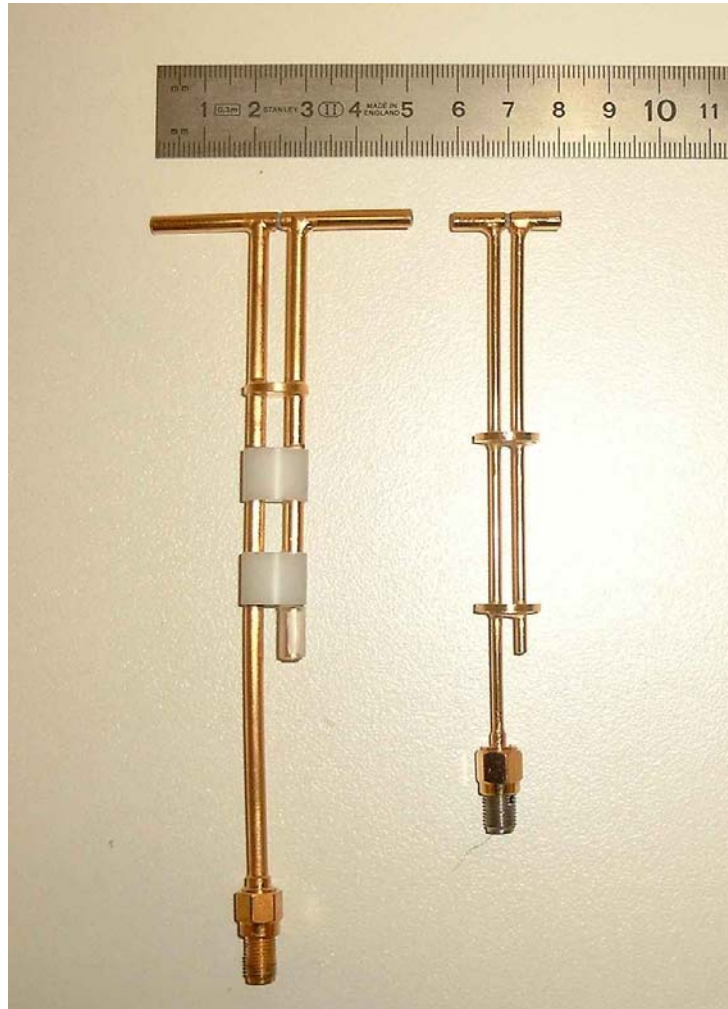


Photo 1: validation dipoles

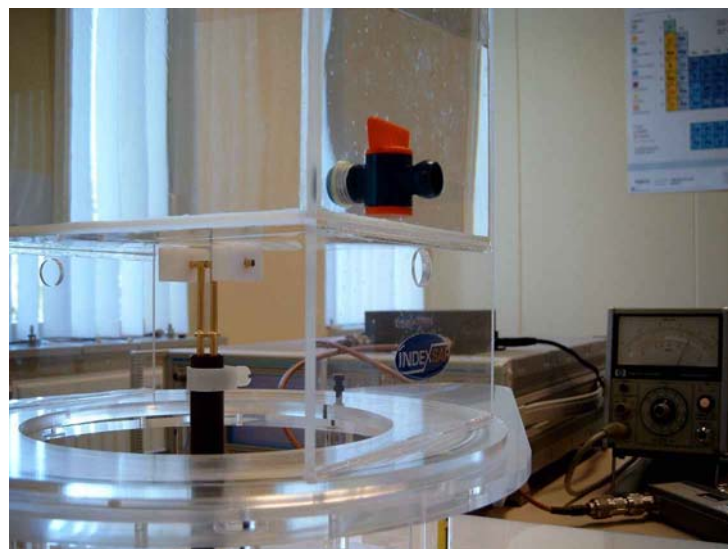


Photo 2: 2.4 GHz dipole validation



Photo 3: instrument setup system check

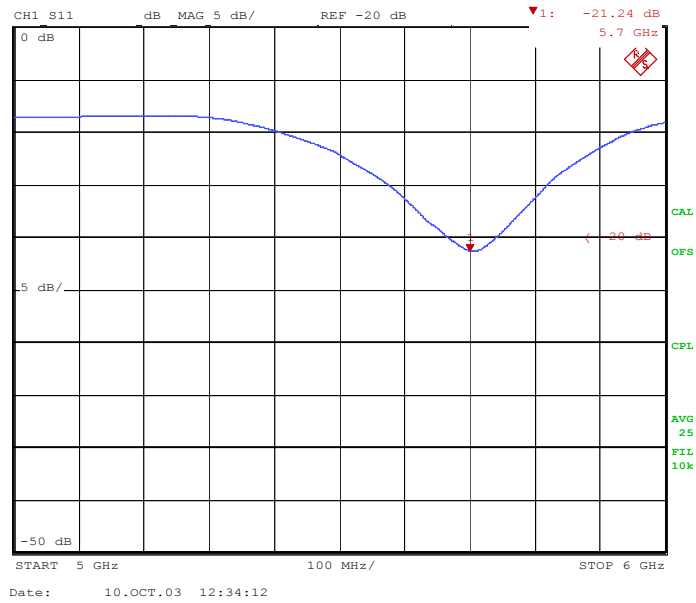


Figure 1: S11 of the 5GHz dipole placed underneath the filled phantom

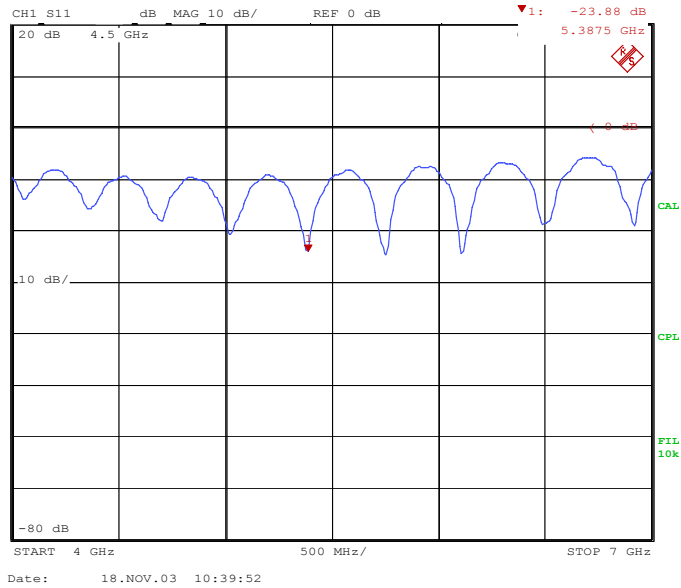


Figure 2: S11 of the Waveguide 8mm spaced from the filled phantom

The target values are 1 g or 10 g averaged SAR values measured on systems for which *system validation* has been performed.

The following system performance check results were obtained in accordance with Chapter 8 of IEEE 1528 (2003):

4.2.1 2450 MHz validation parameters.

At 2450 MHz a system validation was executed according IEEE Std. 1528-2003 . Dipole used see Photo 1.

Frequency = 2450 MHz	Target value	Measured value	Deviation ¹
Peak Spatial-Average SAR 1g [W/kg]	52	54.3	+4.4%
Peak Spatial-Average SAR 10g [W/kg]	24	24.5	+2.1%

Detailed validation result may be found in section 8.

¹ Deviation is calculated: $100\% * ((\text{measured value})/(\text{reference value}) - 1)$

4.3 System validation on 5.8 GHz.

For 5.8 the proposed method in “*First Draft- Annex X: Frequency Extension to 3GHz-6GHz of IEEE Std. 1528(2003) recommended Practice for Determining the Peak Spatial-Average Specific Absorption Rate (SAR) in the Human Head from Wireless Communication Devices: Measurement Techniques*” February 28, 2003, was performed, but the described value of SAR could not be reached. This is consistent with the experience of the manufacturer of our SAR system, IndexSar Inc. from the UK. As an alternative the waveguide method, proposed by Ghandi, and repeated by Indexsar, was used to validate the system setup. The results show that this validation is within 10% of the expected values. Detailed information is included in paragraph 10.3. A picture of the waveguide used is shown here.

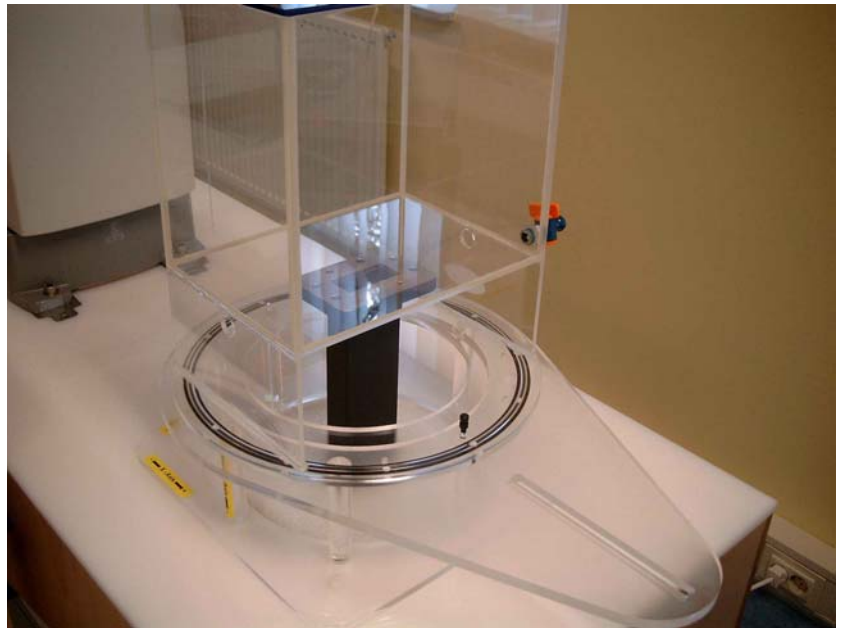


Photo 4: (above) Waveguide in position under phantom

Photo 5: (left) Waveguide.



Test specification(s): FCC/CA SAR Requirements
 Description of EUT: 2.4/5 GHz IEEE 802.11g/a WLAN Cardbus card
 Manufacturer: Agere Systems Netherlands BV
 Brand mark: Agere
 Model: 1102
 FCC ID: IMRCB1102

4.3.1 5800 MHz validation parameters.

The measurement was performed at 5.757 GHz. (Which is within 10% of the frequency band of interest)

Frequency = 5757 MHz	Target value ²	Measured value	Deviation ³
Peak Spatial-Average SAR 1g [W/kg]	35.8	35.98	0.4%
Peak Spatial-Average SAR 10g [W/kg]	N/a	N/a	N/a

Power on the waveguide [dBm]	Expected SAR (FROM normalized value) [W/kg]	Measured and normalized [W/kg]	Deviation [%]
21	35.8	35.96	+0.4%
13.9	0.93	0.894	4%
4.3	0.100	0.099	1%

4.4 Measured maximum output power of EUT.

The EUT has been set to the maximum output power level that is defined by the manufacturer and/or the operating requirements of the system (see section 3.3 EUT test operating configurations).

The results of tests on the EUT are depicted in table below. Listed is the higher of the conducted average power and ERP.

4.4.1 Measured Average power on 2.4 GHz.

Transmission bit rate DSSS mode (Mbit/s)	Average transmit output power (conducted, dBm)		
	Channel 1 (2412 MHz)	Channel 6 (2437 MHz)	Channel 11 (2462 MHz)
1	11.5	11.5	11.0
2	11.5	11.3	11.0
5.5	11.5	11.5	11.0
11	11.5	11.3	11.0

Table 1: Maximum average output power

Transmission bit rate OFDM mode (Mbit/s)	Average transmit output power (conducted, dBm)		
	Channel 1 (2412 MHz)	Channel 6 (2437 MHz)	Channel 11 (2462 MHz)
9	13.5	14.9	10.4
18	13.5	14.9	10.4
36	13.5	14.9	10.4
54	13.5	13.6	10.4

Table 2: Maximum average output power

² Reference: Q. Li, O.P. Ghandi, G. Kang, 'An open-ended waveguide system validation and/or probe calibration for frequencies above 3 GHz', submitted to IEEE Transactions on Microwave Theory and Techniques, June 2003.

³ Deviation is calculated: $100\% * ((\text{measured value}) / (\text{reference value}) - 1)$



Test specification(s): FCC/CA SAR Requirements
Description of EUT: 2.4/5 GHz IEEE 802.11g/a WLAN Cardbus card
Manufacturer: Agere Systems Netherlands BV
Brand mark: Agere
Model: 1102
FCC ID: IMRCB1102

4.4.2 Measured Average Power on 5 GHz.

Transmission bit-rate (Mbit/s)	Average transmit output power (conducted, dBm)			
	Ch. 36 (5180 MHz)	Ch. 48 (5240 MHz)	Ch. 52 (5260 MHz)	Ch. 64 (5320 MHz)
9	10.8	10.6	10.5	10.0
18	10.8	10.6	10.5	10.4
36	10.8	10.6	10.4	10.4
54	10.8	10.6	10.4	10.3

Table 3: Maximum average transmit output power

Transmission bit rate (Mbit/s)	Average transmit output power (conducted, dBm)		
	Channel 149 (5745 MHz)	Channel 157 (5785 MHz)	Channel 165 (5825 MHz)
9	6.6	5.7	5.0
18	6.6	5.7	5.0
36	6.6	5.4	5.2
54	6.6	5.4	5.2

Table 4: Maximum average output power

The power levels were monitored before and after each full 3D scan. These levels are specified in chapter 8.

4.5 Tissue simulating liquid dielectric parameters.

For the purpose of the tests as described in this report the following tissue dielectric parameters have been determined. The tables indicate the dielectric parameters of the liquids used during the tests. The indicated required values are derived from IEEE Std. 1528-2003 and OET Bulletin 65 supplement C. At frequencies other than reference frequencies, for which tissue parameters are given in the standards, the parameters have been determined by the linear interpolation. Depending on the intended use of the EUT the interpolated values will refer to the mid-band frequency of each operating mode. The measurement method is described in section 10.4.

Deviation of the actual parameters vs. the prescribed parameters is calculated according to: $D = (A/T - 1) * 100\%$ where D is deviation in %, A is the actual value and T is the Target value.

4.5.1 Mixing procedures.

All Tissue Equivalent Liquids are obtained from Bristol University.

Contact details:

Medical Physics Department

University of Bristol, Bristol Haematology & Oncology Centre

Horfield road, Bristol BS2 8 ED, United Kingdom

Tel. 44 117 928 2469.

Dielectric parameters are determined by the university using NPL trace-able standards.

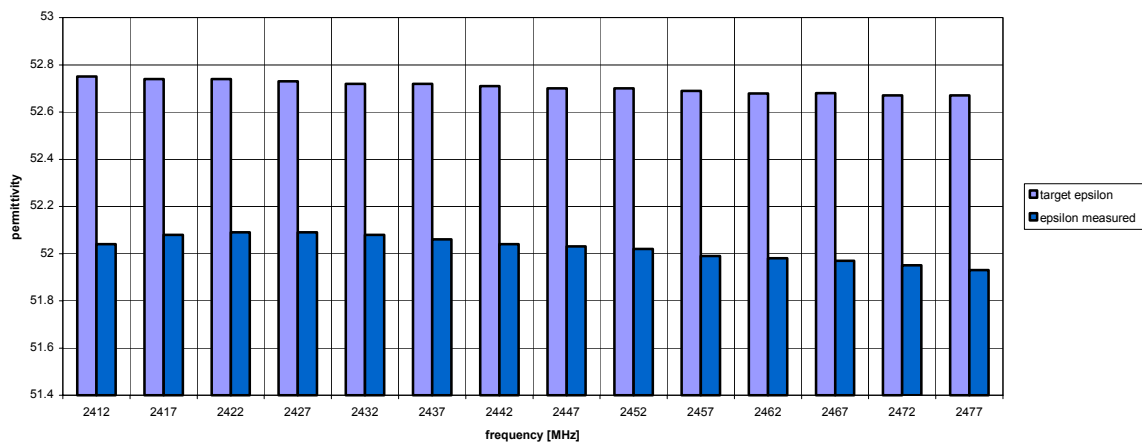


Test specification(s): FCC/CA SAR Requirements
 Description of EUT: 2.4/5 GHz IEEE 802.11/a WLAN Cardbus card
 Manufacturer: Agere Systems Netherlands BV
 Brand mark: Agere
 Model: 1102
 FCC ID: IMRCB1102

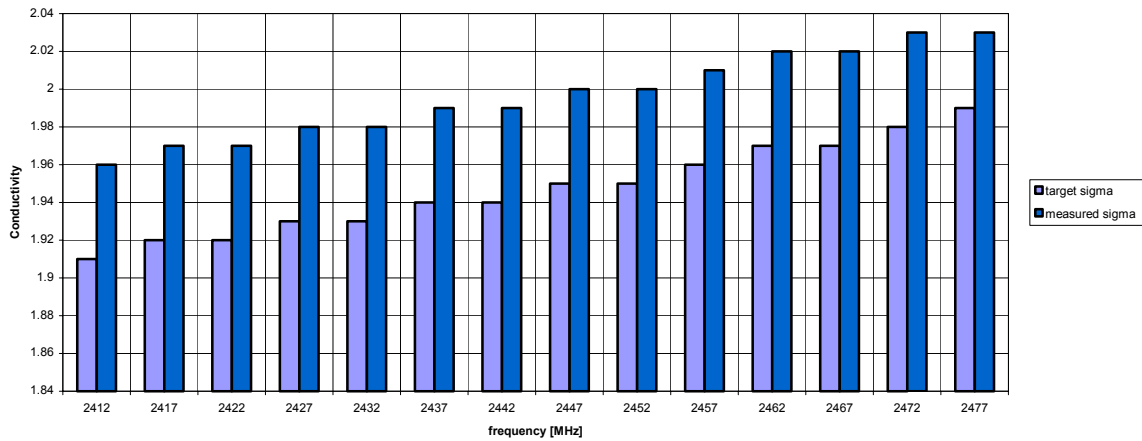
4.5.2 Dielectric parameters for 2.4 GHz, body tissue.

MHz	$\epsilon_r [\epsilon']$	$\sigma [S/m]$	$\epsilon_r [\epsilon']$		$\sigma [S/m]$		Measured			
			Min	Max	Min	Max	$\epsilon_r [\epsilon']$	$\Delta(\%)$	$\sigma [S/m]$	$\Delta(\%)$
2412	52.75	1.91	47.78	58.03	1.72	2.11	52.04	-1.35%	1.96	2.62%
2437	52.72	1.94	47.45	57.99	1.74	2.13	52.06	-1.25%	1.99	2.58%
2462	52.679	1.97	47.42	57.95	1.77	2.16	51.98	-1.33%	2.02	2.54%

2.4 GHz body liquid validaton



2.4 GHz body liquid validaton



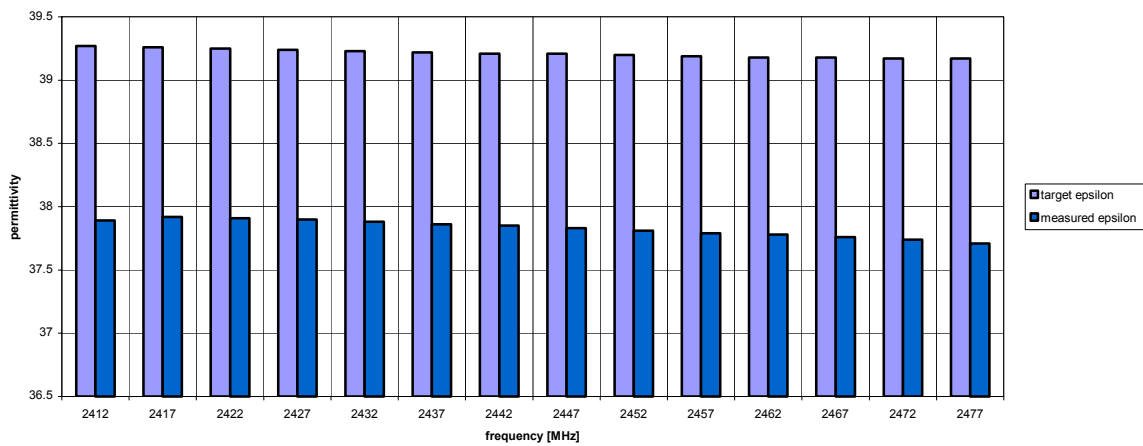


Test specification(s): FCC/CA SAR Requirements
 Description of EUT: 2.4/5 GHz IEEE 802.11g/a WLAN Cardbus card
 Manufacturer: Agere Systems Netherlands BV
 Brand mark: Agere
 Model: 1102
 FCC ID: IMRCB1102

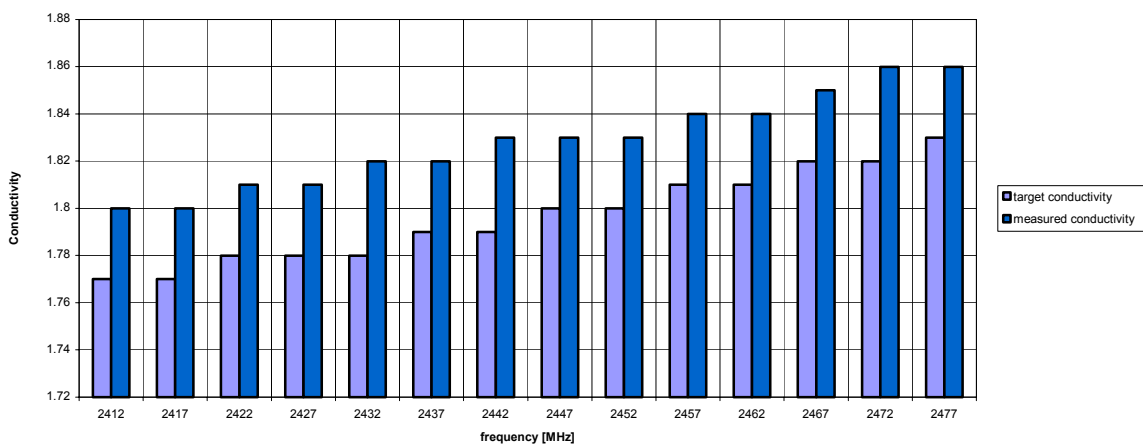
4.5.3 Dielectric parameters for 2.4GHz, head tissue.

MHz	$\epsilon_r [\epsilon']$	$\sigma [S/m]$	$\epsilon_r [\epsilon']$		$\sigma [S/m]$		Measured			
			Min	Max	Min	Max	$\epsilon_r [\epsilon']$	$\Delta(\%)$	$\sigma [S/m]$	$\Delta(\%)$
2412	39.27	1.77	47.78	58.03	1.72	2.11	37.89	-3.51%	1.8	1.69%
2437	39.22	1.79	47.45	57.99	1.74	2.13	37.86	-3.47%	1.82	1.68%
2462	39.18	1.81	47.42	57.95	1.77	2.16	37.78	-3.57%	1.84	1.66%

2.4 GHz head liquid validaton



2.4 GHz head liquid validaton



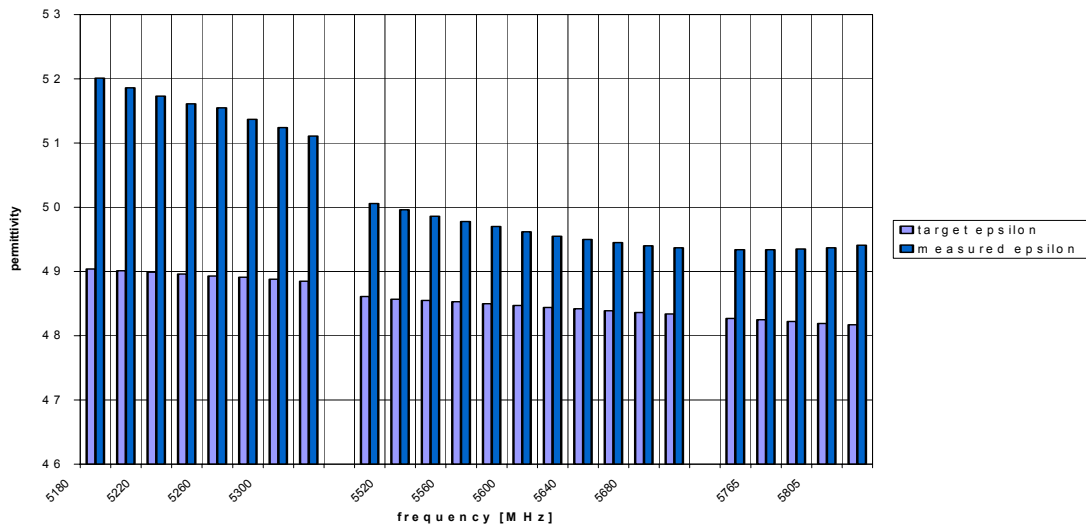


Test specification(s): FCC/CA SAR Requirements
 Description of EUT: 2.4/5 GHz IEEE 802.11g/a WLAN Cardbus card
 Manufacturer: Agere Systems Netherlands BV
 Brand mark: Agere
 Model: 1102
 FCC ID: IMRCB1102

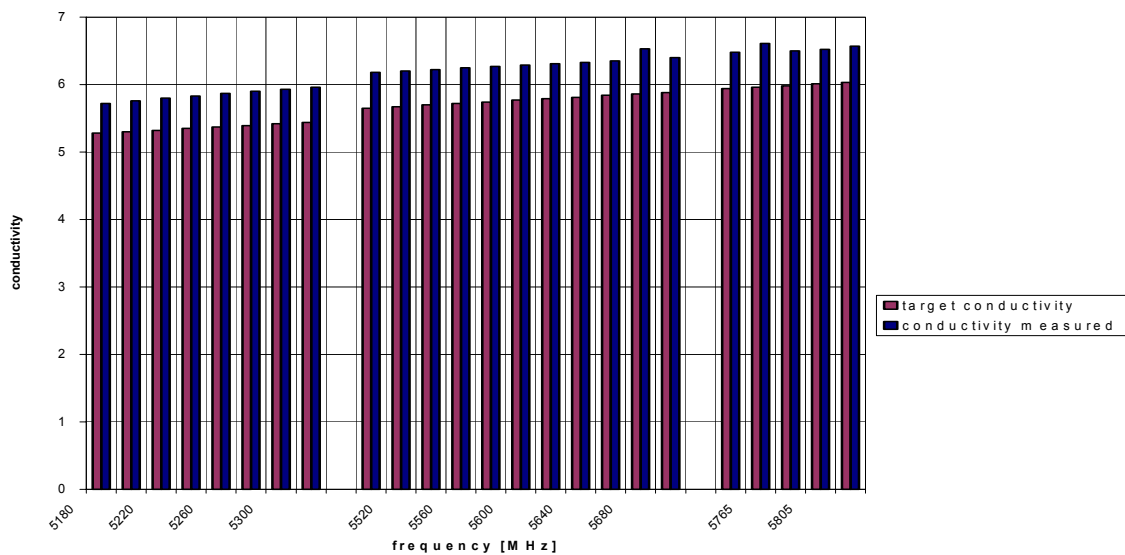
4.5.4 Dielectric parameters for 5 GHz body tissue.

MHz	$\epsilon_r [\epsilon']$	$\sigma [S/m]$	$\epsilon_r [\epsilon']$		$\sigma [S/m]$		Measured			
			Min	Max	Min	Max	$\epsilon_r [\epsilon']$	$\Delta(\%)$	$\sigma [S/m]$	$\Delta(\%)$
5180	49.04	5.28	44.14	53.95	4.75	5.8	52.01	6.06%	5.72	8.33%
5500	48.61	5.65	43.75	53.47	5.08	6.21	50.06	2.98%	6.18	9.38%
5825	48.17	6.03	43.35	52.98	5.43	6.63	49.41	2.57%	6.57	8.96%

5 GHz body liquid validaton



5 GHz body liquid validaton

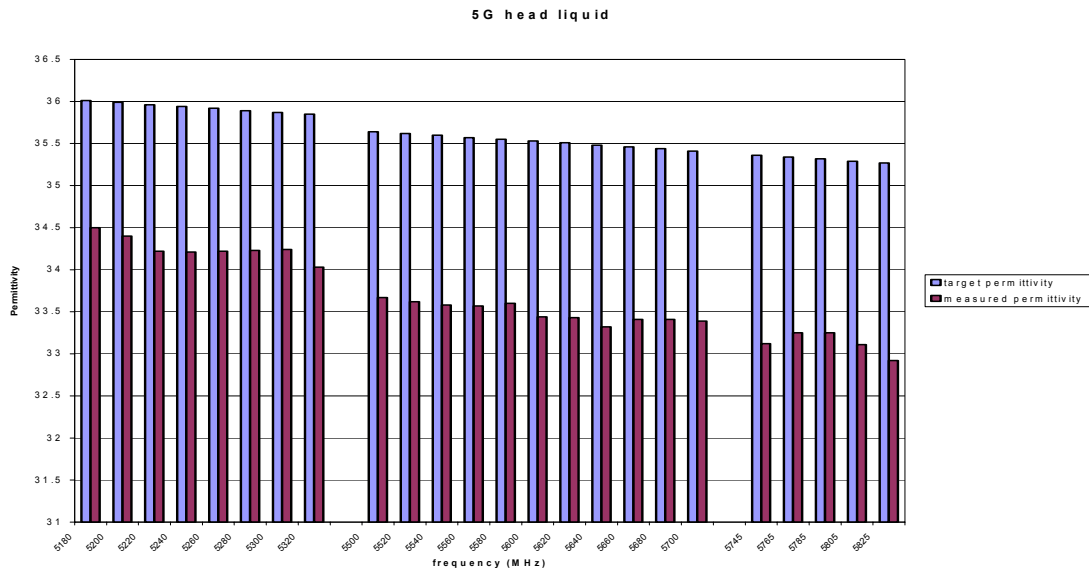
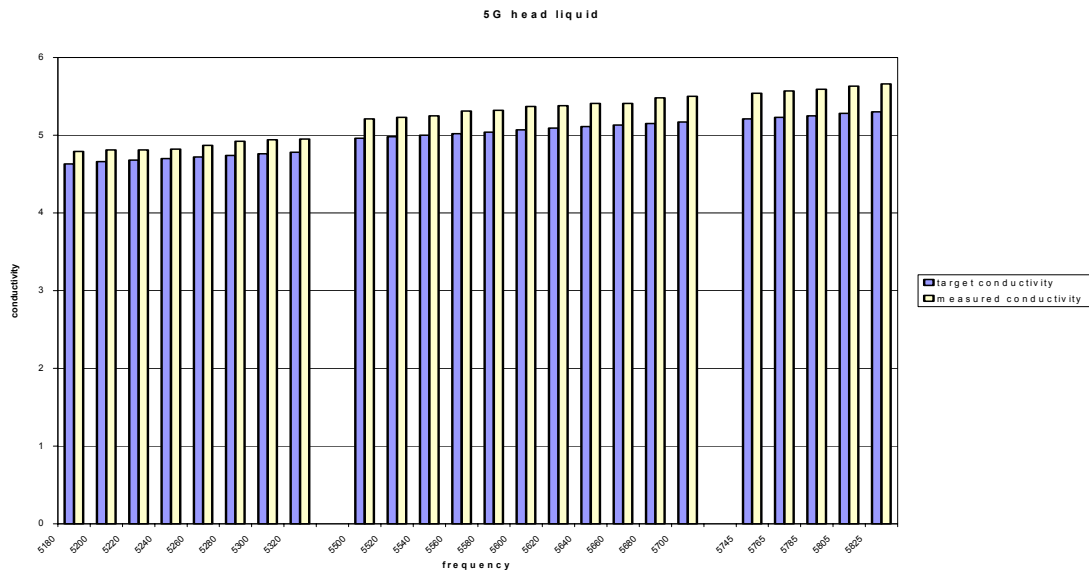




Test specification(s): FCC/CA SAR Requirements
 Description of EUT: 2.4/5 GHz IEEE 802.11g/a WLAN Cardbus card
 Manufacturer: Agere Systems Netherlands BV
 Brand mark: Agere
 Model: 1102
 FCC ID: IMRCB1102

4.5.5 Dielectric parameters for 5GHz, head tissue.

MHz	$\epsilon_r [\epsilon']$	$\sigma [S/m]$	$\epsilon_r [\epsilon']$		$\sigma [S/m]$		Measured			
			Min	Max	Min	Max	$\epsilon_r [\epsilon']$	$\Delta(\%)$	$\sigma [S/m]$	$\Delta(\%)$
5180	36.01	4.63	32.41	39.61	4.17	5.1	34.5	-4.18%	4.79	3.29%
5500	35.64	4.96	32.08	39.21	4.47	5.46	33.67	-5.53%	5.21	4.99%
5825	35.27	5.3	31.74	38.8	4.77	5.83	32.92	-6.67%	5.66	6.88%



4.5.6 Tissue simulating liquid temperature requirements.

Tissue simulating liquid temperature should be between +20 °C to +25 °C.

The variation of the liquid temperature shall not exceed ± 2 °C during the test; The actual tissue simulating liquid temperature was recorded to be between +0.0 °C to +1.4 °C (2450 MHz body tissue).

The variation of the liquid temperature shall not exceed ± 2 °C during the test; The actual tissue simulating liquid temperature was recorded to be between +20.4 °C to +21.3 °C (5800 MHz body tissue).

5 Photographs of EUT in host.



Figure 3 Front view with card in bottom slot



Figure 4 : Side view. Offset Card to base = 13 mm

6 Identification of EUT-Phantom positions.

6.1 Portable Device operating near the body.

Following the guidelines from FCC OET bulletin 65 C and the TCB RF exposure training notes, 2 positions were investigated. The 'lapheld' position reflects the situation where the laptop is placed on the users lap. The laptop containing the EUT is placed underneath the flat phantom with the EUT placed in the bottom slot, thus minimizing the distance of the EUT and the users body.

The second position reflects bystander SAR. This position means that the card is facing the phantom bottom shell perpendicularly. The position is referred to as 'perpendicular'. The separation distance is 10mm, which for 2450 MHz still yields a useful reading of the field strength in the liquid. At 5 GHz however, the reading of the field strength is getting too low to do a sensible reading. Therefore at 5 GHz, the measurements have been done with 0mm distance, i.e. with the card touching the phantom.

6.1.1 Position perpendicular

The separation distance, d of 10 mm measured from side of the EUT to the bottom of the phantom. The spacer on the photo is removed after the correct distance of 10 mm has been set.



6.1.2 Position lapheld

This position follows the directions from FCC TCB training notes dated April 2002. This position reflects the situation where the user had the laptop on his or her lap, with the card inserted in the lower slot. The separation distance, d was determined to be 13 mm, and reflects the position where the host would be positioned on the lap.





Test specification(s): FCC/CA SAR Requirements
 Description of EUT: 2.4/5 GHz IEEE 802.11g/a WLAN Cardbus card
 Manufacturer: Agere Systems Netherlands BV
 Brand mark: Agere
 Model: 1102
 FCC ID: IMRCB1102

7 Test Results.

7.1 Tested channels

Channel	Operating frequencies (MHz)	Output power (mW)	SAR Test performed
1	2412	See section 4.4	yes
6	2437		Yes
11	2462		Yes
36	5180		Yes
52	5260		Yes
64	5320		Yes
149	5745		Yes
157	5785		Yes
165	5825		Yes

The table above lists the tested channels. In each band highest, lowest and middle channel is tested regardless of power or SAR in other channels. The modulation and bit rate setting are defined by the power measurements reported in section 4.4.

The table below shows the SAR test results.

Host	Distance base to slot	Channel / modulation	Lapheld contact PSA ⁴ SAR 1g (W/kg)	Perpendicular 0 and 10mm PSA SAR (1g) W/kg
DELL	13mm	1 (2412) OFDM 9 Mbit/s	0.242	0.045
		6 (2437) OFDM 9 Mbit/s	0.331	0.174
		11 (2462) OFDM 9 Mbit/s	0.115	0.023
		36 (5180) OFDM 18 Mbit/s	0.105	0.563
		48 (5240) OFDM 54 Mbit/s	0.110	0.568
		52 (5260) OFDM (18 Mbit/s)	0.193	0.511
		64 (5320) OFDM 36 Mbit/s	0.100	0.419
		149 (5745) OFDM 54 Mbit/s	0.046	0.116
		157 ((5785) OFDM 18 Mbit/s)	0.036	0.102
		165 (5825) OFDM 54 Mbit/s	0.038	0.082

Note: The channels and modulations selected are those having the highest power output. Verification of Spot SAR measurements confirmed that listed channel/modulation indeed correspond to those channels.

Note: for 5 GHz channels (36 and up) the 10 mm distance was lowered to 0 mm (contact) because at 10mm no significant readings could be measured.

7.2 Step size and scan information.

Measurements on 2.4 GHz: A 32x32 mm area is scanned centered around the hotspot using 6 steps of 5.33mm in the x-y plane and 10 steps of 1.4mm in the z plane. The first area scan is performed with the probe tip 5 mm above the phantom bottom shell

For 5 GHz a 30x30 mm area is scanned centered around the hotspot using 10 steps of 3 mm in the x-y plane, and 10 steps of 1.5 mm in the z plane. The first area scan is performed with the probe tip 2 mm above the phantom bottom shell

The location of the hotspot is determined prior to each 3D scan by means of an area scan.

⁴ PSA SAR is Peak Spatial-Average SAR.



Test specification(s): FCC/CA SAR Requirements
Description of EUT: 2.4/5 GHz IEEE 802.11g/a WLAN Cardbus card
Manufacturer: Agere Systems Netherlands BV
Brand mark: Agere
Model: 1102
FCC ID: IMRCB1102

8 Plots of measurement data.

In the following sections detailed information of the validation scans and the worst case values have been given:

section	Ch	EUT position
01	-	Validation 2.4 GHz
02	-	Validation 5 GHz
03	6	Lapheld
04	48	Perpendicular
05	64	Perpendicular
06	149	perpendicular

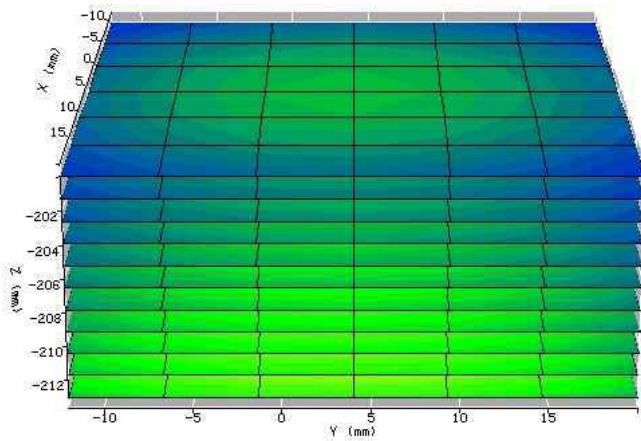


Test specification(s): FCC/CA SAR Requirements
 Description of EUT: 2.4/5 GHz IEEE 802.11g/a WLAN Cardbus card
 Manufacturer: Agere Systems Netherlands BV
 Brand mark: Agere
 Model: 1102
 FCC ID: IMRCB1102

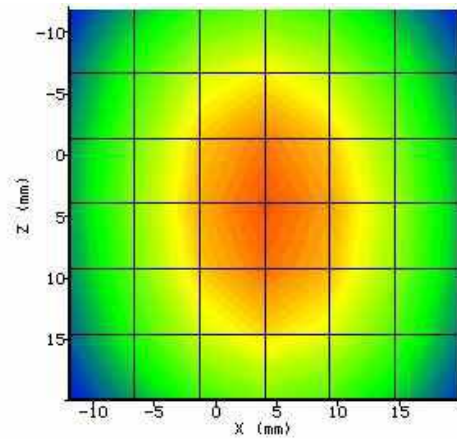
8.1 Validation 2.4 GHz

System / software:	SARA2 / 2.0b VPM
Device Under Test:	N/a
Diode Compression Factors (V*200):	20 / 20 / 20
Phantom S/No:	HeadBox170.csv

SAR 1g:	13.575 W/kg		
SAR 10g:	6.123 W/kg		
Position:	10 mm spacing		
Test Frequency:	2480 MHz		
Antenna Configuration:	2.4 GHz validation dipole	No. of points x and y	6
Power	24 dBm	Stepsize x and y (mm)	5
Type of Modulation:	None	No of points z	10
Modn. Duty Cycle:	100%	Stepsize z (mm)	1.4
Probe Serial Number:	S/N0131-2450-head	Distance probe tip – phantom shell (mm)	5
Probe battery last changed:	4-12-2003	Ambient Temperature (C)	20
Liquid Simulant:	Head tissue	Relative Humidity:	34%
Relative Permittivity:	39.2	SAR Drift:	0.02 dB
Conductivity:	1.80	Max SAR Y-axis Location:	4.0 mm
Liquid Temperature:	20°C	Max SAR Z-axis Location:	-220.8 mm



E_{eff} (V/m)



E_{eff} (V/m): Plane at -213.100006103

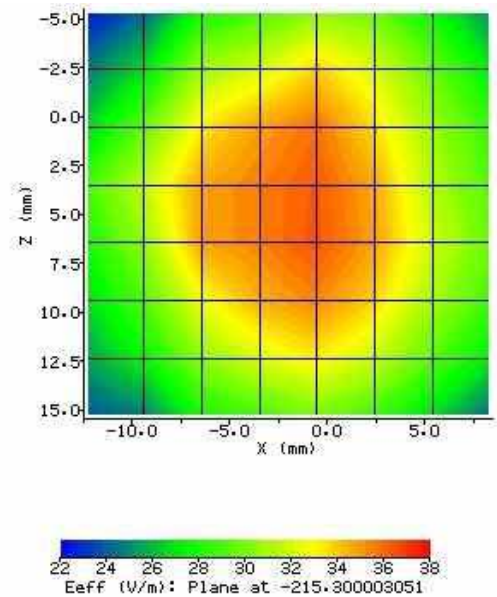
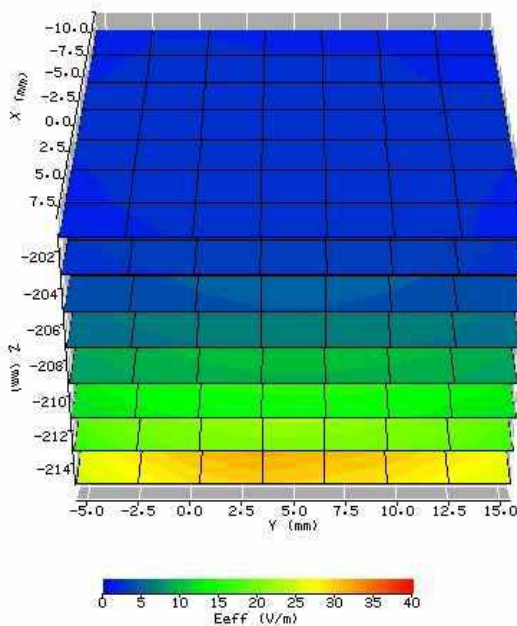


Test specification(s): FCC/CA SAR Requirements
 Description of EUT: 2.4/5 GHz IEEE 802.11g/a WLAN Cardbus card
 Manufacturer: Agere Systems Netherlands BV
 Brand mark: Agere
 Model: 1102
 FCC ID: IMRCB1102

8.2 Validation 5 GHz

System / software:	SARA2 / 2.0b VPM
Device Under Test:	N/a
Diode Compression Factors (V*200):	20 / 20 / 20
Phantom S/No:	HeadBox170.csv

SAR 1g:	8.998 W/kg	
SAR 10g:	3.825 W/kg	
Position:	lapheld contact	
Test Frequency:	5752	
Antenna Configuration:	integral	No. of points x and y
Power	24 dBm	Stepsize x and y (mm)
Type of Modulation:	CW	No of points z
Modn. Duty Cycle:	100%	Stepsize z (mm)
Probe Serial Number:	S/N0131 -5800-head	Distance probe tip – phantom shell (mm)
Probe battery last changed:	4-12-2003	Ambient Temperature (C)
Liquid Simulant:	head tissue	Relative Humidity:
Relative Permittivity:	35	SAR Drift:
Conductivity:	5.8	Max SAR Y-axis Location:
Liquid Temperature:	20°C	Max SAR Z-axis Location:



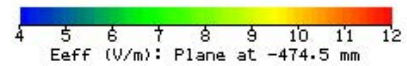
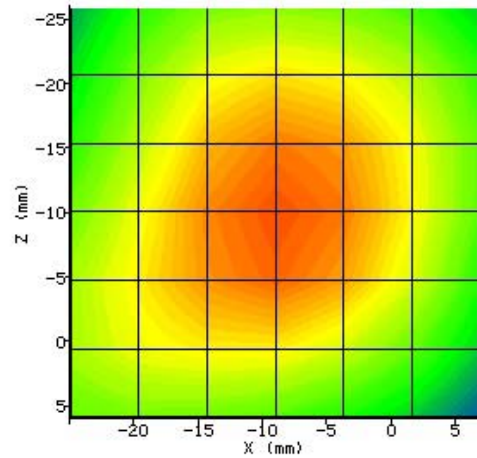
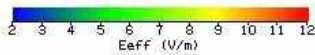
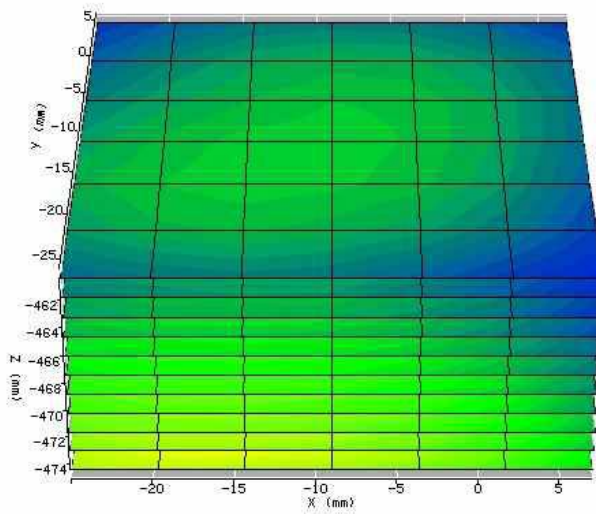


Test specification(s): FCC/CA SAR Requirements
 Description of EUT: 2.4/5 GHz IEEE 802.11g/a WLAN Cardbus card
 Manufacturer: Agere Systems Netherlands BV
 Brand mark: Agere
 Model: 1102
 FCC ID: IMRCB1102

8.3 Channel 6 Lapheld

System / software:	SARA2 / 2.0b VPM
Device Under Test:	agere cardbus 1102
Diode Compression Factors (V*200):	20 / 20 / 20
Phantom S/No:	HeadBox170.csv

SAR 1g:	0.331 W/kg		
SAR 10g:	0.174 W/kg		
Position:	lapheld contact		
Test Frequency:	2437 (channel 6)		
Antenna Configuration:	integral	No. of points x and y	6
Power	14.9 dBm	Stepsize x and y (mm)	5.33
Type of Modulation:	OFDM 9 Mbit/s	No of points z	10
Modn. Duty Cycle:	100%	Stepsize z (mm)	1.4
Probe Serial Number:	S/N0131 -2450-body	Distance probe tip – phantom shell (mm)	2
Probe battery last changed:	4-12-2003	Ambient Temperature (C)	20
Liquid Simulant:	body tissue	Relative Humidity:	34%
Relative Permittivity:	39.22	SAR Drift:	0.032 dB
Conductivity:	1.79	Max SAR Y-axis Location:	-10 mm
Liquid Temperature:	20°C	Max SAR Z-axis Location:	-482.2 mm





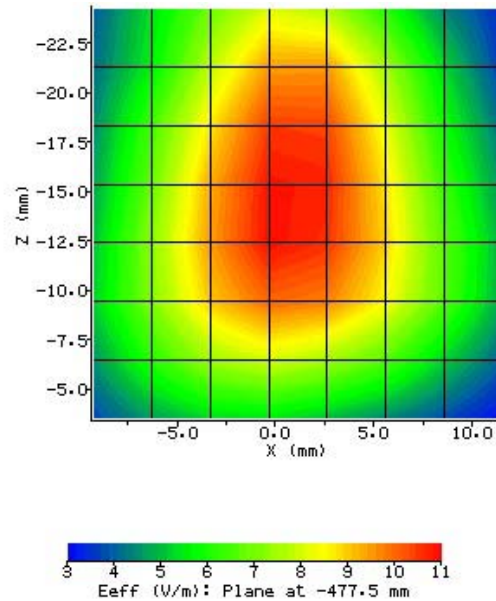
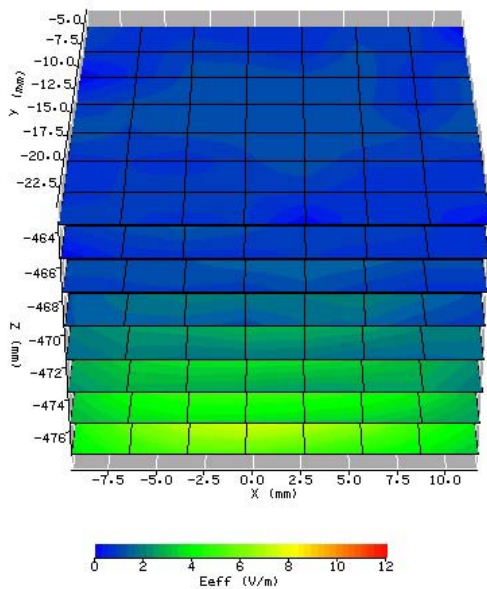
Test specification(s): FCC/CA SAR Requirements
 Description of EUT: 2.4/5 GHz IEEE 802.11g/a WLAN Cardbus card
 Manufacturer: Agere Systems Netherlands BV
 Brand mark: Agere
 Model: 1102
 FCC ID: IMRCB1102

8.4 Channel 48 Perpendicular

System / software:	SARA2 / 2.0b VPM
Device Under Test:	agere cardbus model 1102
Diode Compression Factors (V*200):	20 / 20 / 20
Phantom S/No:	HeadBox170.csv

8.4.1 Results

SAR 1g:	0.568 W/kg		
SAR 10g:	0.207 W/kg		
Position:	perpendicular		
Test Frequency:	5240 (channel 48)		
Antenna Configuration:	integral	No. of points x and y	7
Power	10.6	Stepsize x and y (mm)	3
Type of Modulation:	OFDM 54 Mbit/s	No of points z	7
Modn. Duty Cycle:	100%	Stepsize z (mm)	2
Probe Serial Number:	S/N0131 -5200-body	Distance probe tip – phantom shell (mm)	2
Probe battery last changed:	4-12-2003	Ambient Temperature (C)	20
Liquid Simulant:	body tissue	Relative Humidity:	34%
Relative Permittivity:	48.55	SAR Drift:	-0.11 dB
Conductivity:	5.70	Max SAR Y-axis Location:	-13.1 mm
Liquid Temperature:	20°C	Max SAR Z-axis Location:	-482.2 mm





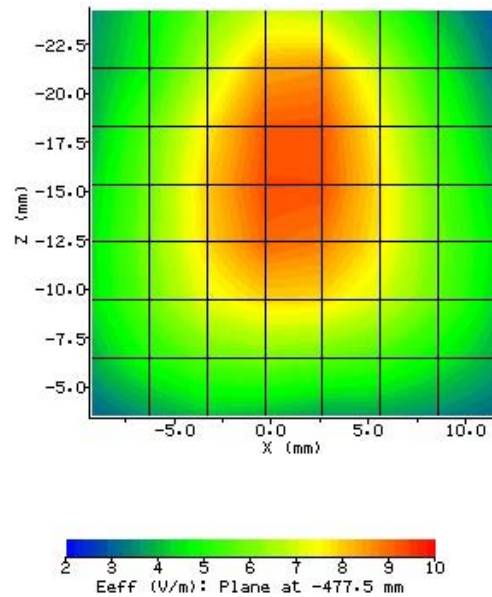
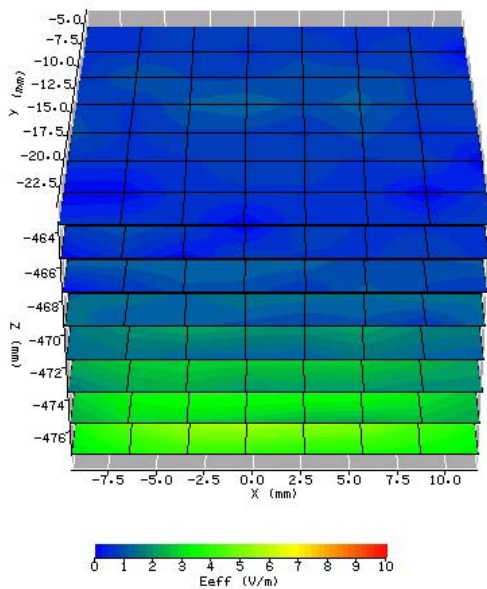
Test specification(s): FCC/CA SAR Requirements
 Description of EUT: 2.4/5 GHz IEEE 802.11g/a WLAN Cardbus card
 Manufacturer: Agere Systems Netherlands BV
 Brand mark: Agere
 Model: 1102
 FCC ID: IMRCB1102

8.5 Channel 64 Perpendicular

System / software:	SARA2 / 2.0b VPM
Device Under Test:	agere cardbus model 1102
Diode Compression Factors (V*200):	20 / 20 / 20
Phantom S/No:	HeadBox170.csv

8.5.1 Results

SAR 1g:	0.419 W/kg		
SAR 10g:	0.156 W/kg		
Position:	lapheld contact		
Test Frequency:	5320 (channel 64)		
Antenna Configuration:	integral	No. of points x and y	7
Power	10.4 dBm	Stepsize x and y (mm)	3
Type of Modulation:	OFDM 36 Mbit/s	No of points z	7
Modn. Duty Cycle:	100%	Stepsize z (mm)	2
Probe Serial Number / calibration:	S/N0131 -5200-body	Distance probe tip – phantom shell (mm)	2
Probe battery last changed:	4-12-2003	Ambient Temperature (C)	20
Liquid Simulant:	body tissue	Relative Humidity:	34%
Relative Permittivity:	48.85	SAR Drift:	0.19 dB
Conductivity:	5.44	Max SAR Y-axis Location:	-11.6 mm
Liquid Temperature:	20°C	Max SAR Z-axis Location:	-482.2 mm



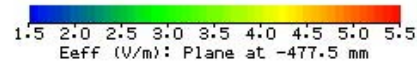
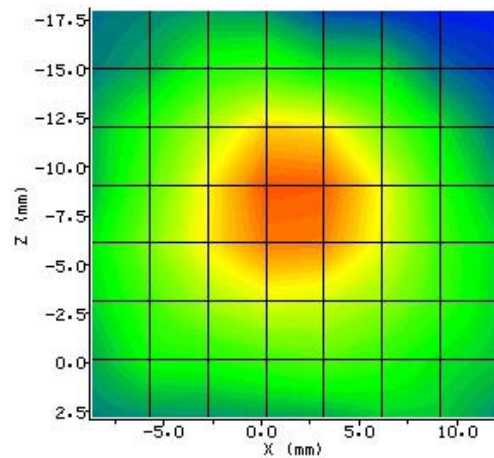
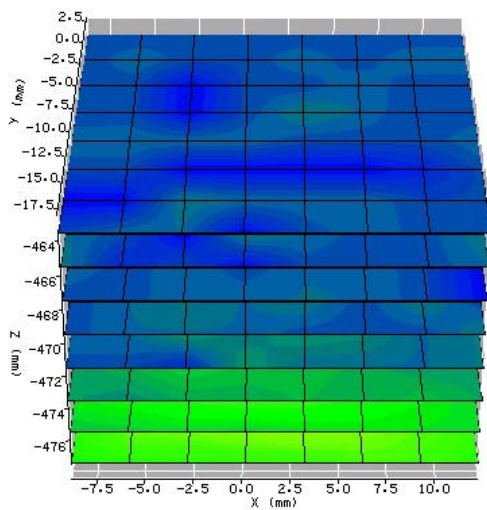


Test specification(s): FCC/CA SAR Requirements
 Description of EUT: 2.4/5 GHz IEEE 802.11g/a WLAN Cardbus card
 Manufacturer: Agere Systems Netherlands BV
 Brand mark: Agere
 Model: 1102
 FCC ID: IMRCB1102

8.6 Channel 149

System / software:	SARA2 / 2.0b VPM
Device Under Test:	agere cardbus 1102
Diode Compression Factors (V*200):	20 / 20 / 20
Phantom S/No:	HeadBox170.csv

SAR 1g:	0.116 W/kg		
SAR 10g:	0.048 W/kg		
Position:	Perpendicular 0 mm		
Test Frequency:	5745 (ch147)		
Antenna Configuration:	integral	No. of points x and y	7
Power	6.6 dBm	Stepsize x and y (mm)	3
Type of Modulation:	OFDM 54 Mbit/s	No of points z	7
Modn. Duty Cycle:	100%	Stepsize z (mm)	2
Probe Serial Number /calibration:	S/N0131-5800-body	Distance probe tip – phantom shell (mm)	2
Probe battery last changed:	4-12-2003	Ambient Temperature (C)	20
Liquid Simulant:	body tissue	Relative Humidity:	34%
Relative Permittivity:	48.27	SAR Drift:	-0.56 dB
Conductivity:	5.94	Max SAR Y-axis Location:	-6.8 mm
Liquid Temperature:	20°C	Max SAR Z-axis Location:	-482.2 mm



8.7 Hotspot identification

By means of an overlay of the 2d scan and a EUT photograph the location and orientation of the hotspot is given:



Photo 5: A 2d scan overlay giving the field strength in the first scanned plane, overlaid on a side view photo of the laptop. 2d scan is that of the worst case perpendicular value in channel 147.

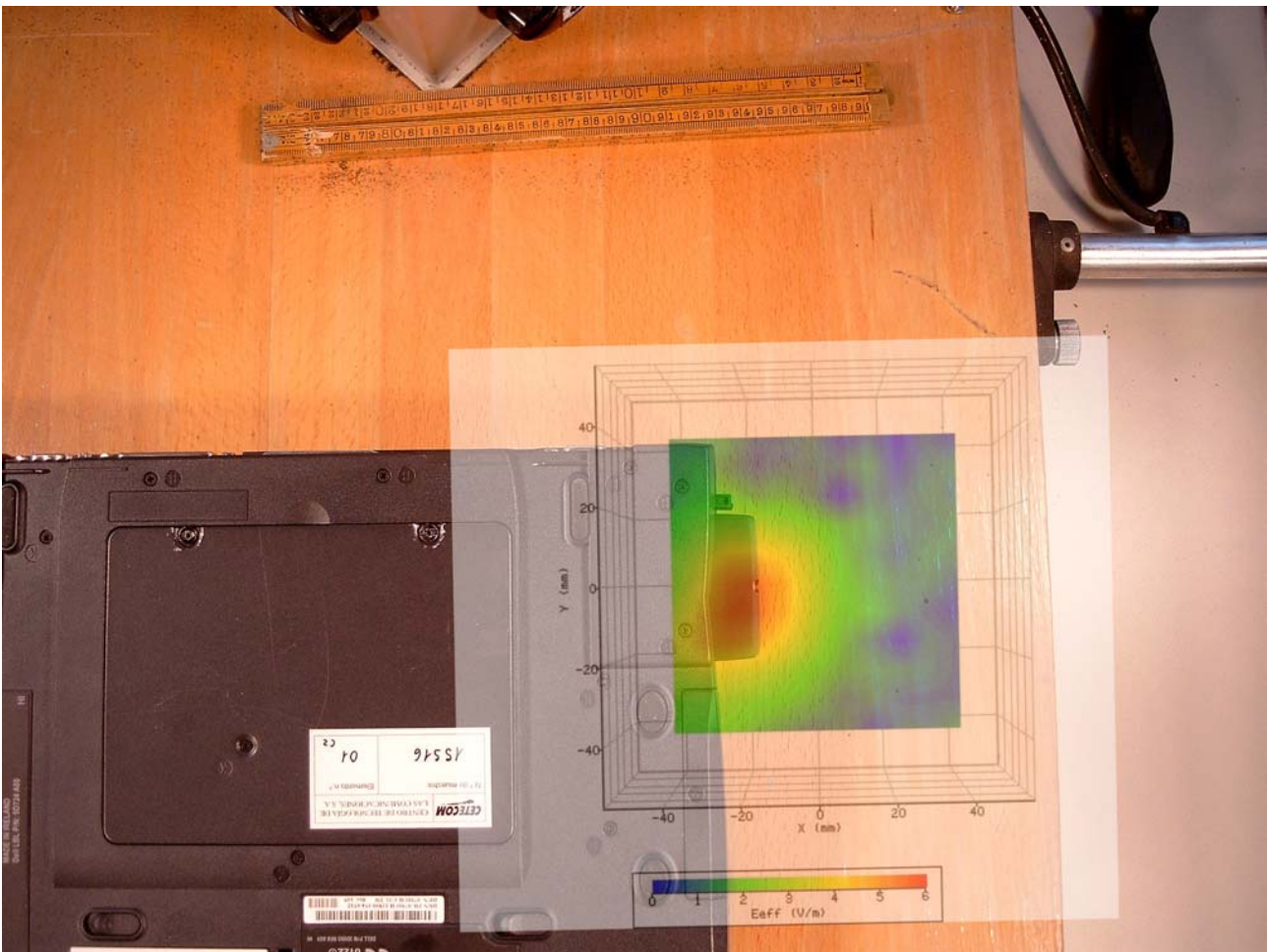


Photo 6 A 2d scan giving the field strength in the first scanned plane, overlaid on a bottom view photo of the laptop. Overlaid plot is that of the worst case lapheld scan in channel 6

9 Description of test configuration.

9.1 SAR measurement system.

9.1.1 Robot System description.

The SAR measurement system used by TNO EPS is the IndexSAR SARA2 system, which consists of a Mitsubishi RV-2A six-axis robot-arm and controller, IndexSAR probe and amplifier and an appropriate phantom as required and considered appropriate for the applied test. The robot is used to move and manipulate the probe to programmed positions inside the phantom to obtain the SAR readings from the EUT.

The system is remote controlled by a PC, which contains the software to control the robot and data acquisition equipment. The software also displays the data obtained from test scans by calculating the measured values into corresponding SAR values based on the currently acceptable calculation methods.

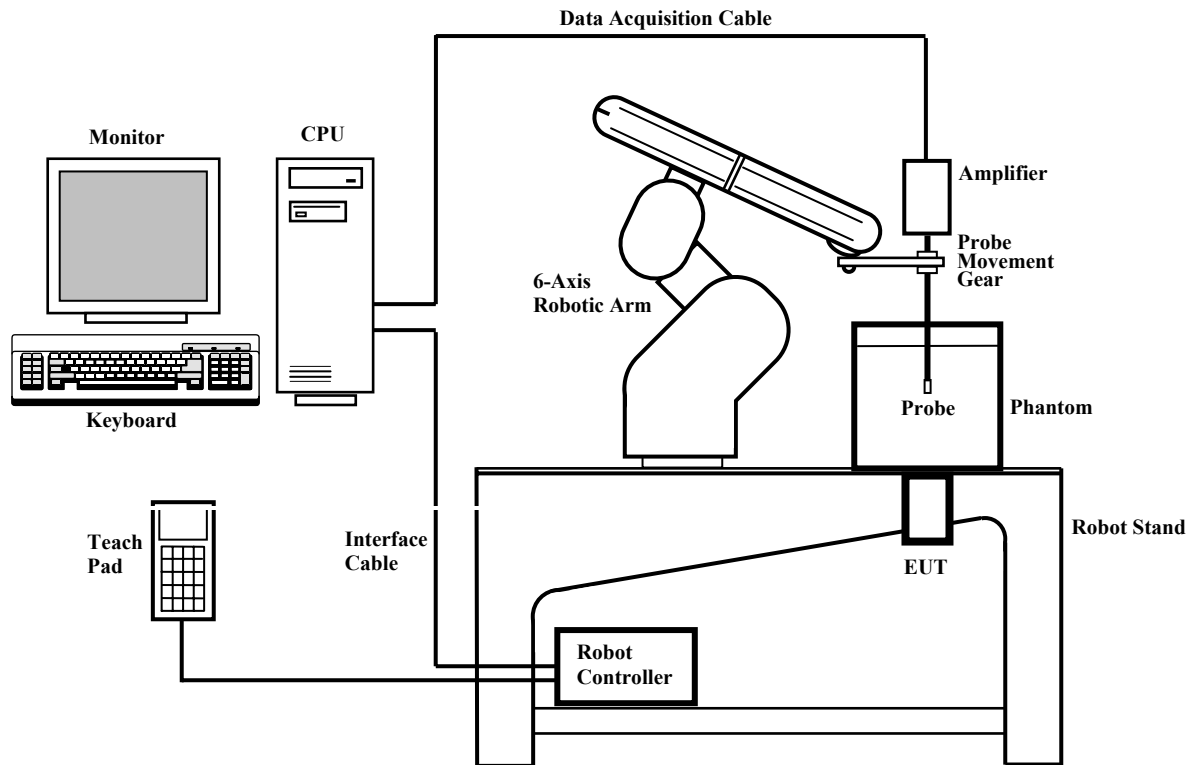


Figure 1: Overview of the SARA2 measurement system

The position and digitized shape of the phantom are made available to the software for accurate positioning of the probe and reduction of set-up time.

E.g. the SAM phantom heads are individually digitized using a Mitutoyo CMM machine to a precision of 0.001mm. The data is then converted into a shape format for the software, providing an accurate description of the phantom shell.

In operation, the system first does an area (2D) scan at a fixed depth within the liquid from the inside wall of the phantom. When the maximum SAR point has been found, the system will then carry out a 3D scan centered at that point to determine volume averaged SAR level.



Test specification(s): FCC/CA SAR Requirements
Description of EUT: 2.4/5 GHz IEEE 802.11g/a WLAN Cardbus card
Manufacturer: Agere Systems Netherlands BV
Brand mark: Agere
Model: 1102
FCC ID: IMRCB1102

9.1.2 Probe description.

The probes are constructed using three orthogonal dipole sensors arranged on an interlocking, triangular prism core. The probes have built-in shielding against static charges and are contained within a PEEK cylindrical enclosure material at the tip.

Probe calibration is described in section 10.1.

9.1.3 Amplifier description.

The amplifier unit has a multi-pole connector to connect to the probe and a multiplexer selects between the 3-channel single-ended inputs. A 16-bit AtoD converter with programmable gain is used along with an on-board micro-controller with non-volatile firmware. Battery life is around 150 hours and data are transferred to the PC via 3m of duplex optical fibre and a self-powered RS232 to optical converter.

9.1.4 Phantom description.

Body-worn operating configurations are tested using a flat phantom. The body phantom shell is made of a low-loss dielectric material with dielectric constant and loss tangent less than 5.0 and 0.05 respectively. The shell thickness for all regions coupled to the test device and its antenna are within 2.0 ± 0.2 mm. The phantom was filled with the required head or body equivalent tissue medium to a depth of 15.0 ± 0.5 cm.

For body mounted and frontal held push-to-talk devices, a flat phantom of dimensions 20x20x20cm with a base plate thickness of 2mm is used.

For Head mounted devices placed next to the ear, the phantom used in the evaluation of the RF exposure of the user of the wireless device is a IEEE P1528/CENELEC EN50361 compliant phantom, shaped like a human head and filled with a mixture simulating the dielectric characteristics of the brain.

The for SARA2 measurement system used Specific Anthropomorphic Mannequin (SAM) Upright Phantom is fabricated using moulds generated from the CAD files as specified by CENELEC EN50361. It is mounted via a rotation base to a supporting table, which also holds the robotic positioner. The phantom and robot alignment is assured by both mechanical and laser registration systems.

9.2 Measurement Procedure.

During the SAR measurement, the positioning of the probe is performed with sufficient accuracy to obtain repeatable measurements in the presence of rapid spatial attenuation phenomena. The accurate positioning of the E-field probe is accomplished by using the high precision robot. The robot can be taught to position the probe sensor following a specific pattern of points.

After an area scan has been done at a fixed distance of 8mm from the side of the phantom on the source side, a 3D scan is set up around the location of the maximum spot SAR. First, a point within the scan area is visited by the probe and a SAR reading taken at the start of testing. At the end of testing, the probe is returned to the same point and a second reading is taken. Comparison between these start and end readings enables the power (SAR) drift during measurement to be assessed.



Test specification(s): FCC/CA SAR Requirements
Description of EUT: 2.4/5 GHz IEEE 802.11g/a WLAN Cardbus card
Manufacturer: Agere Systems Netherlands BV
Brand mark: Agere
Model: 1102
FCC ID: IMRCB1102

9.2.1 SARA2 Interpolation and Extrapolation schemes.

SARA2 software contains support for both 2D cubic B-spline interpolation as well as 3D cubic B-spline interpolation. In addition, for extrapolation purposes, a general n^{th} order polynomial fitting routine is implemented following a singular value decomposition algorithm presented in [4]. A 4th order polynomial fit is used by default for data extrapolation, but a linear-logarithmic fitting function can be selected as an option. The polynomial fitting procedures have been tested by comparing the fitting coefficients generated by the SARA2 procedures with those obtained using the polynomial fit functions of Microsoft Excel when applied to the same test input data.

9.2.2 Interpolation of 2D area scan.

The 2D cubic B-spline interpolation is used after the initial area scan at fixed distance from the phantom shell wall. The initial scan data are collected with approx. 10mm spatial resolution and spline interpolation is used to find the location of the local maximum to within a 1mm resolution for positioning the subsequent 3D scanning.

9.2.3 Extrapolation of 3D scan.

For the 3D scan, data are collected on a spatially regular 3D grid having (by default) 6.4 mm steps in the lateral dimensions and 3.5 mm steps in the depth direction (away from the source). SARA2 enables full control over the selection of alternative step sizes in all directions. The digitized shape of the Flat Phantom is available to the SARA2 software, which decides which points in the 3D array are sufficiently well within the shell wall to be 'visited' by the SAR probe. After the data collection, the data are extrapolated in the depth direction to assign values to points in the 3D array closer to the shell wall. A notional extrapolation value is also assigned to the first point outside the shell wall so that subsequent interpolation schemes will be applicable right up to the shell wall boundary.

9.2.4 Interpolation of 3D scan and volume averaging.

The procedure used for defining the shape of the volumes used for SAR averaging in the SARA2 software follow the method of adapting the surface of the 'cube' to conform with the surface of the phantom (see Appendix C.2.2.1 in EN 50361). This is called, here, the conformal scheme.

For each row of data in the depth direction, the data are extrapolated and interpolated to less than 1mm spacing and average values are calculated from the phantom surface for the row of data over distances corresponding to the requisite depth for 10g and 1g cubes. This results in two 2D arrays of data, which are then cubic B-spline interpolated to sub mm lateral resolution. A search routine then moves an averaging square around through the 2D array and records the maximum value of the corresponding 1g and 10g volume averages. For the definition of the surface in this procedure, the digitized position of the headshell surface is used for measurement in head-shaped phantoms. For measurements in rectangular, box phantoms, the distance between the phantom wall and the closest set of gridded data points is entered into the software.

For measurements in box-shaped phantoms, this distance is under the control of the user. The effective distance must be greater than 2.5mm as this is the tip-sensor distance and to avoid interface proximity effects, it should be at least 5mm. A value of 6 or 8mm is recommended. This distance is called **dbe** in EN 50361.

For automated measurements inside the head, the distance cannot be less than 2.5mm, which is the radius of the probe tip and to avoid interface proximity effects, a minimum clearance distance of x mm is retained. The actual value of **dbe** will vary from point to point depending upon how the spatially-regular 3D grid points fit within the shell. The greatest separation is when a grid point is just not visited due to the probe tip dimensions. In this case the distance could be as large as the step-size plus the minimum clearance distance (i.e with $x=5$ and a step size of 3.5, **dbe** will be between 3.5 and 8.5mm).



Test specification(s): FCC/CA SAR Requirements
Description of EUT: 2.4/5 GHz IEEE 802.11g/a WLAN Cardbus card
Manufacturer: Agere Systems Netherlands BV
Brand mark: Agere
Model: 1102
FCC ID: IMRCB1102

The default step size (**dstep** in EN 50361) used is 3.5mm, but this is under user-control. The compromise is with time of scan, so it is not practical to make it much smaller or scan times become long and power-drop influences become larger.

The robot positioning system specification for the repeatability of the positioning (**dss** in EN50361) is +/- 0.04mm.

The Specific Anthropomorphic Mannequin (SAM) Upright Phantom shell is made by an industrial moulding process from the CAD files of the SAM shape, with both internal and external moulds. For the upright phantoms, the external shape is subsequently digitized on a Mitutoyo CMM machine (Euro C574) to a precision of 0.001mm. Wall thickness measurements made non-destructively with an ultrasonic sensor indicate that the shell thickness (**dph**) away from the ear is 2.0 +/- 0.1mm. The ultrasonic measurements were calibrated using additional mechanical measurements on available cut surfaces of the phantom shells.

The flat phantom is made from Polymethylmethacrylate (PMMA), a low-loss dielectric material with dielectric constant and loss tangent less than 5.0 and 0.05 respectively. The shell thickness for all regions coupled to the test device and its antenna are within 2.0 ± 0.2 mm.

For the upright phantom, the alignment is based upon registration of the rotation axis of the phantom on its 253mm-diameter baseplate bearing and the position of the probe axis when commanded to go to the axial position. A laser alignment tool is provided (procedure detailed elsewhere). This enables the registration of the phantom tip (**dmis**) to be assured to within approx. 0.2mm. This alignment is done with reference to the actual probe tip after installation and probe alignment. The rotational positioning of the phantom is variable – offering advantages for special studies, but locating pins ensure accurate repositioning at the principal positions (LH and RH ears).

10 Additional information supplementary to the test report.

10.1 Probe information.

To this report the probe test report and calibration document of the probe used are added. In the electronic version of this report, the pages are inserted after the last page of this report.

10.2 SAR system check.

The purpose of the SAR System check is to verify that the system operates within its specifications at the device test frequency. The SAR system check is a simple check of repeatability to make sure that the system works correctly at the time of the compliance test. It is not a verification of the system with respect to external standards. The SAR system check should detect possible short term drift and errors in the system.

The SAR system check is a complete 1 g or 10 g averaged SAR measurement in a simplified test system with a standard source. The instrumentation and procedures are the same as those used for the compliance tests. The SAR system check has been performed using the specified tissue-equivalent liquid and at a chosen fixed frequency that is within $\pm 10\%$ of the compliance test mid-band frequency. The system check is performed prior to compliance tests and the result have been checked against the requirements (IEEE1528 and CENELEC Standards) and must always be within $\pm 10\%$ of the target value corresponding to the test frequency, liquid and the source used mentioned in these standards.

The following measurement setup has been used for performing SAR system checks using a box phantoms is based on the procedures fully described in IEEE1528. This SAR System Check is performed at the start of each measurement at a specific frequency range , with appropriate simulant liquids.

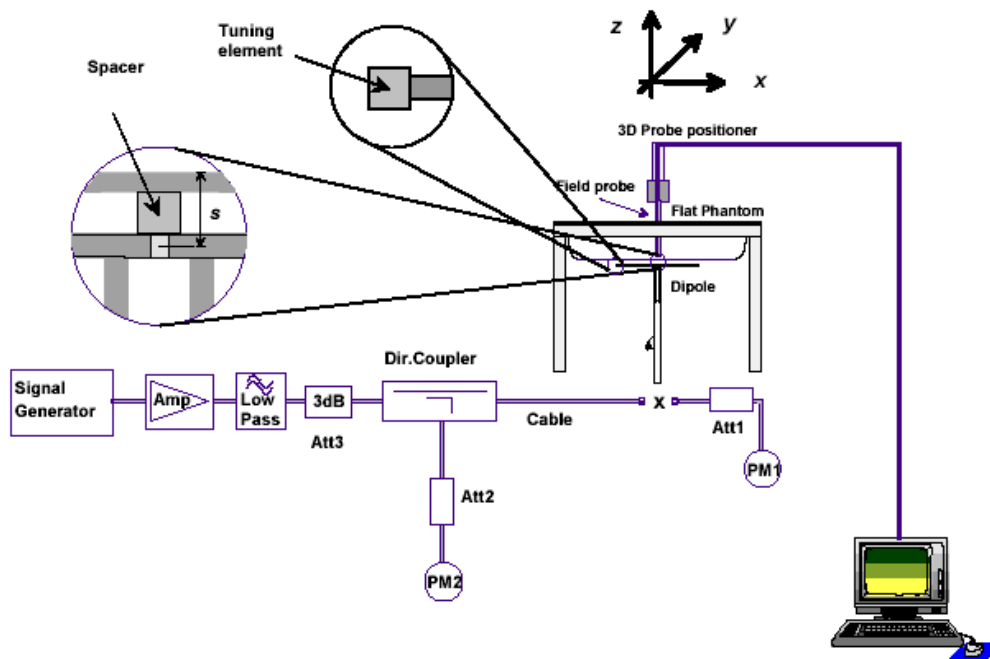


Fig. 10.2.1

With the Signal Generator, Amplifier and directional coupler in place, the source signal has been set up at the relevant frequency and a power meter has been used to measure the power at the end of the SMA cable which is going to be connected to the balanced dipole. The low noise and distortion Signal Generator is adjusted so, that including all cable losses and other



Test specification(s): FCC/CA SAR Requirements
Description of EUT: 2.4/5 GHz IEEE 802.11g/a WLAN Cardbus card
Manufacturer: Agere Systems Netherlands BV
Brand mark: Agere
Model: 1102
FCC ID: IMRCB1102

losses, the power at the connector X (to be connected to the balanced dipole) is 0.25W (24 dBm) (Reading on PM1 in figure 10.2.1). A calibrated attenuator (Att 1. 20 dB) is used to protect overloading of the Power meter.

No tuning of the balanced dipole was required because fixed tuned and calibrated balanced dipoles for the appropriate test frequencies were used.

10.3 5.8 GHz system check.

For 5.8 GHz validation, a waveguide method as proposed by Li, Ghandi and Kang, ‘An open ended waveguide system validation and/or probe calibration for frequencies above 3 GHz, submitted to the IEEE transactions on Microwave Theory and Techniques, June 2003.

The description of this method is taken from ‘SARA2 system validation at 5.2 and 5.8 GHz, MI Manning, Indexsar Ltd., 17 October 2003.

SARA2 SYSTEM VALIDATION AT 5.2 AND 5.8GHz

MI Manning, Indexsar Ltd.
17th October 2003.

10.3.1 Introduction.

Whilst international standards recommend techniques for performing system validations of SAR test systems for frequencies between 300MHz and 3GHz, proposals for validation testing at higher frequencies are only at an early-draft stage of discussion.

However, 5 GHz devices are on the market and need to be tested now. IEC62209 has circulated two drafts of proposed procedures for 5-6GHz SAR testing (Annex X), but the procedures are, as yet, ill-defined. The Annex X validation defines a small dipole as a source. Dimensions were incompletely specified in the first draft and are only more fully-defined in the second draft. No recommended separation distance for the dipole beneath the phantom is given in either draft to correspond with the computed reference values suggested.

Indexsar built some dipoles based on the first draft dimensions, but has found that use of these dipoles at the expected 10mm spacing from the liquid do not give results that match the reference values. 5.8GHz validation results for max. 1g SAR with our prototype dipoles were 30% low at a spacing of 10mm and 50% high at a spacing of 7.5mm.

Since then, two useful contributions on 5 GHz validation testing have been circulated. A paper by Li, Gandhi and Kang [1] observes that “It is very difficult to develop half-wave dipole antennas for use in the 5.1 to 5.8 GHz band . . .”. They propose an alternative procedure using an open-ended waveguide placed close to the bottom of the phantom. They propose that the open end of a WR187 waveguide is placed 10mm from the phantom liquid and they present FDTD computation results for use as reference values.

This particular waveguide has different internal dimensions to one recommended for probe calibration purposes in Annex X (WG13), which is unfortunate as otherwise the same waveguide could be recommended for both purposes.

The Utah paper [1] used liquids with the following properties for validations at 5.25 and 5.8 GHz:

Frequency (GHz)	Relative permittivity	Conductivity (S/m)
5.25	48.8	6.82
5.8	46.9	7.83



Test specification(s): FCC/CA SAR Requirements
Description of EUT: 2.4/5 GHz IEEE 802.11g/a WLAN Cardbus card
Manufacturer: Agere Systems Netherlands BV
Brand mark: Agere
Model: 1102
FCC ID: IMRCB1102

These property values are not very close to those recommended for compliance evaluations in Annex X, which are:

Frequency (GHz)	Relative permittivity	Conductivity (S/m)
5.25	36.0	4.7
5.8	35.3	5.3

In a separate paper [2], Utah authors argue that results of 1g SAR measurements are not very sensitive to liquid properties at 5-6GHz and use this contention to justify the use of liquids with different properties.

Another paper recently circulated from Motorola personnel makes recommendations for SAR zoom scan measurement grids at 5-6GHz [3]. The authors conclude that noise due to low measured values will compromise 10g volume average calculations and they recommend a restricted size zoom volume for 1g SAR determinations. They also conclude that 4th order polynomial extrapolations are not the best for these frequencies and suggest 3rd order polynomials or fitting to the logarithm of the SAR data.

10.3.2 Validation results using WR187 waveguide.

It would seem that an open-ended waveguide has some advantages in use as a source and we have performed validations based on the recommendations in [1]. The scanning parameters were set as per the recommendations in [3] and 3rd-order polynomial extrapolations were used instead of 4th order. The liquids have rather different property values to those employed in [1], but [2] suggests that this may not affect the max. 1g SAR results by much.

Using these conditions and with use of a WR187 waveguide, validation testing with the following liquid properties resulted in 1g SAR measurements close to the reference values given in [1]. The results are summarized below:

Frequency (GHz)	Relative permittivity	Conductivity (S/m)
5.2	37.12	5.01
5.8	35.41	5.79

Frequency (GHz)	Reference 1g SAR value (W/kg) from [1] normalized to 1W	Measured 1g SAR value (W/kg) / error (%)
5.25	35.80	34.82 (-3%)
5.8	39.46	43.08 (+9%)

Based on the testing performed, it is recommended that SARA2 systems are validated using the open-ended WR187 waveguide technique until improved procedures become available or specific methods become adopted in the relevant standards.

10.3.3 An alternative open-ended waveguide geometry.

It is not clear why [1] recommends a spacing of 10mm from the liquid from a waveguide, when contact with the phantom would seem to be more appropriate and offer more accurate positioning. Also, a matching window with permittivity similar to that of the phantom wall material could minimize reflective losses. Lastly, a waveguide of the same dimensions as that recommended for probe calibration would be a useful reduction in the required equipment budget.

For these reasons, we are commissioning FDTD computations of reference values expected with a WG13 waveguide with a matching window as per Annex X in contact with a 2mm wall phantom filled with a liquid with the properties proposed in Annex X. In this way, we hope to have an optimized validation solution for 5-6GHz testing.

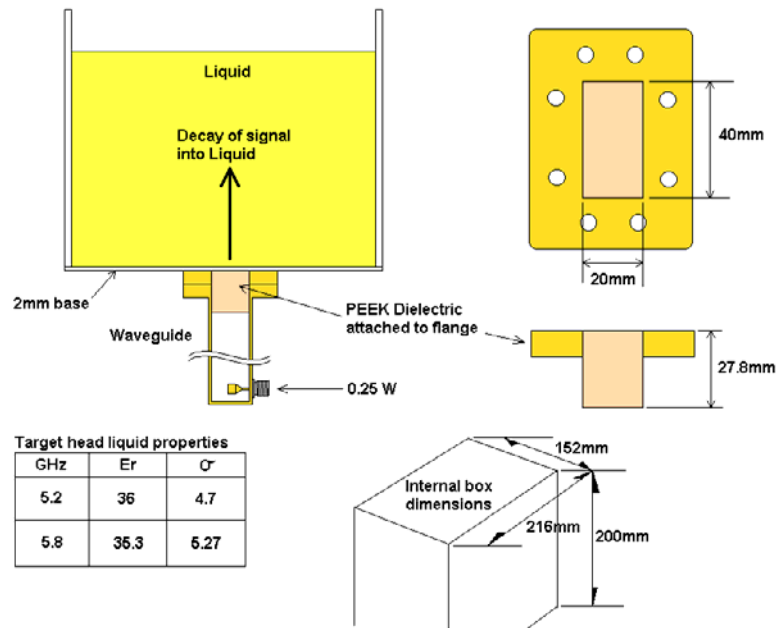


Figure 1: Proposed validation configuration with waveguide in contact with phantom for which reference values will be calculated

References

- [1] Q Li, OP Gandhi, G Kang, 'An open-ended waveguide system validation and/or probe calibration for frequencies above 3GHz', submitted to IEEE Transactions on Microwave Theory and Techniques, June 2003.
- [2] G Kang & OP Gandhi, 'Effect of dielectric properties on the peak 1- and 10g SAR for 802.11 a/b/g frequencies of 2.45 and 5.15 to 5.85 GHz', to be published in IEEE Transactions on Electromagnetic Compatibility.
- [3] Recommendations for SAR zoom scan measurement grids at 5-6GHz.

10.4 Dielectric property measurement of tissue-simulant liquids for SAR testing.

10.4.1 Introduction.

This section describes the measurement of the dielectric properties of tissue-equivalent material as part of the SAR characterization procedure and the method used.

The measurement method is based on a published technique (*Toropainen et al*, 'Method for accurate measurement of complex permittivity of tissue equivalent liquids', *Electronics Letters* 36 (1) 2000 pp32-34) and uses a fixture with 2 parallel planes with a conductor in between. Liquid filling the space between the planes immerses the inner conductor wholly. Measurements of S_{21} with an empty fixture and that of a filled fixture are conducted so that the complex dielectric properties of the fluid can be deduced. The fixture is also referred to as *TEM line*.

10.4.2 TEM-cell construction.

The TEM cell construction is shown in Figure 10.3.1 and consists of a central cylindrical transmission line sandwiched between two ground planes

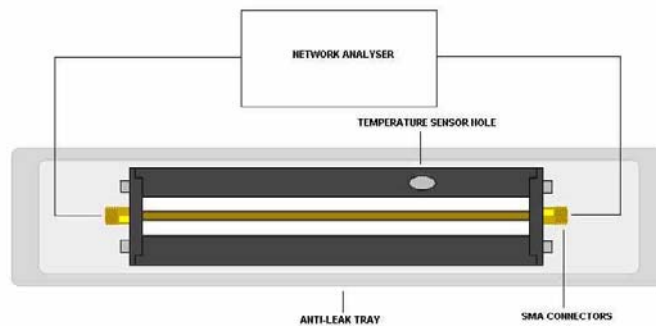


Figure 10.3.1. TEM Cell Construction.

Four different sensors can be used with transmission line lengths of 30mm, 60mm, 80mm and 160mm. The transmission line is terminated with SMA connectors at either end using short 50 ohm launcher sections. The assembly is held firmly against a plastic base with a clamping arrangement providing a seal to retain the liquid. The liquid under test is introduced with a pipette to fill the space between the ground planes. Care has been taken to prevent air bubbles and this is particularly important with viscous liquids. A hole is provided in one of the ground planes so that a thermometer probe has been inserted to monitor the temperature. The cell is washed out and thoroughly dried before further use.

A vector network analyser (VNA) is used to measure the performance of the cell. A good impedance match will be found when air filled indicating that the transmission line impedance is close to 50 ohm. The transmission loss and phase are measured with and without the liquid to enable the electrical properties to be deduced.

10.4.3 Calculation of dielectric properties from VNA measurements.

The complex permittivity of the simulant liquids were measured using a TEM line sensor as recommended in the EN50361 and draft IEEE1528 standards. The method [1] is based on the measurement of complex transmission coefficient of a TEM-line filled with the liquid. Transmission measurement is done using a VNA, recording the magnitude and phase of scattering coefficient S_{21} . The complex permittivity of the liquid is calculated from the magnitude and phase of S_{21} by numerical solution of the equation of transmission coefficient derived by signal flow graph technique

$$S_{21} = \frac{(1 - \Gamma^2) \exp(-j(k - k_0)d)}{1 - \Gamma^2 \exp(-j2kd)},$$

$$\Gamma = \frac{1 - \sqrt{\epsilon_r}}{1 + \sqrt{\epsilon_r}},$$

$$k = \frac{2\pi f}{c_0} \sqrt{\epsilon_r},$$



Test specification(s): FCC/CA SAR Requirements
Description of EUT: 2.4/5 GHz IEEE 802.11g/a WLAN Cardbus card
Manufacturer: Agere Systems Netherlands BV
Brand mark: Agere
Model: 1102
FCC ID: IMRCB1102

where Γ is the reflection coefficient at liquid surfaces, k the propagation factor in the liquid, k_0 the vacuum propagation factor, d the length of the sample, f the frequency and $\epsilon_r = \epsilon_r' - j\epsilon_r''$ the relative complex permittivity of the sample.



Test specification(s): FCC/CA SAR Requirements
Description of EUT: 2.4/5 GHz IEEE 802.11g/a WLAN Cardbus card
Manufacturer: Agere Systems Netherlands BV
Brand mark: Agere
Model: 1102
FCC ID: IMRCB1102

10.5 Measurement uncertainty.

10.5.1 Introduction.

A measurement uncertainty assessment has been undertaken following guidance given in EN50361 and IEEE1528. IndexSAR Ltd has supplied a generic uncertainty analysis for the SARA2 system in the form of a spreadsheet and the supporting assessments are documented in an IndexSAR document IXS-2028. Additionally, uncertainties resulting from the probe positioning system and the upright phantom geometry are discussed in additional documents.

Some of the uncertainty contributions are site-specific and, for these, TNO Electronic Products & Services (EPS) has assessed the uncertainty contributions arising from local environmental and procedural factors.

The resultant uncertainty budget is shown on the next pages.



Test specification(s): FCC/CA SAR Requirements
 Description of EUT: 2.4/5 GHz IEEE 802.11g/a WLAN Cardbus card
 Manufacturer: Agere Systems Netherlands BV
 Brand mark: Agere
 Model: 1102
 FCC ID: IMRCB1102

10.5.2 Uncertainty calculated for IEEE1528 : standard measurements (2.4 GHz).

<i>a</i>	<i>b</i>	<i>c</i>	<i>d</i>	$e = f(d,k)$	<i>f</i>	<i>g</i>	$h = \frac{c \cdot g}{e}$	$i = \frac{c \cdot g}{e}$	<i>k</i>	
Uncertainty Component	Section	Tol. (± %)	Prob. Dist.	Div.	ci (1-g)	ci (10-g)	$\frac{1-g}{u_i}$ (±%)	$\frac{10-g}{u_i}$ (±%)	vt	
Measurement System										
Probe Calibration	E2.1	10.0	N	1 or k	1	1	5.0	5.0	∞	
Axial Isotropy	E2.2	5.93	R	$\sqrt{3}$	0.7	0.7	2.4	2.4	∞	
Hemispherical Isotropy	E2.2	10.92	R	$\sqrt{3}$	1	1	6.3	6.3	∞	
Boundary Effect	E2.3	4.0	R	$\sqrt{3}$	1	1	2.3	2.3	∞	
Linearity	E2.4	0.93	R	$\sqrt{3}$	1	1	0.5	0.5	∞	
System Detection Limits	E2.5	1.0	R	$\sqrt{3}$	1	1	0.6	0.6	∞	
Readout Electronics	E2.6	1.0	N	1 or k	1	1	1.0	1.0	∞	
Response Time	E2.7	0.0	R	$\sqrt{3}$	1	1	0.0	0.0	∞	
Integration Time	E2.8	1.8	R	$\sqrt{3}$	1	1	1.0	1.0	∞	
RF Ambient Conditions	E6.1	3.0	R	$\sqrt{3}$	1	1	1.7	1.7	∞	
Probe Positioner Mechanical Tolerance	E6.2	^{0.6}	R	$\sqrt{3}$	1	1	0.3	0.3	∞	
Probe Positioning wrt Phantom Shell	E6.3	5.0	R	$\sqrt{3}$	1	1	2.9	2.9	∞	
SAR Evaluation Algorithms	E5.2	^{8.0}	R	$\sqrt{3}$	1	1	4.6	4.6	∞	
Test sample Related										
Test Sample Positioning	E4.2	5.0	R	$\sqrt{3}$	1	1	2.9	2.9	∞	
Device Holder Uncertainty	E4.1	3	R	$\sqrt{3}$	1	1	1.7	1.7	∞	
Output Power Variation	6.6.2	5.0	R	$\sqrt{3}$	1	1	2.9	2.9	∞	
Phantom and Tissue Parameters										
Phantom Uncertainty (shape and thickness)	E3.1	4.0	R	$\sqrt{3}$	1	1	2.3	2.3	∞	
Liquid Conductivity Target - tolerance	E3.2	1.0	R	$\sqrt{3}$	0.7	0.5	0.4	0.3	∞	
Liquid Conductivity - measurement uncert.	E3.3	4.7	R	$\sqrt{3}$	0.7	0.5	1.9	1.4	∞	
Liquid Permittivity Target tolerance	E3.2	4.4	R	$\sqrt{3}$	0.6	0.5	1.5	1.3	∞	
Liquid Permittivity - measurement uncert.	E3.3	3.3	R	$\sqrt{3}$	0.6	0.5	1.1	1.0	∞	
Combined Standard Uncertainty		$u_c = \sqrt{\sum_{i=1}^m c_i^2 \cdot u_i^2}$						11.7	11.6	
Expanded Uncertainty (95% confidence interval)		Normal k=1.96 ue=k* u_c						22.9%	22.7%	



Test specification(s): FCC/CA SAR Requirements
 Description of EUT: 2.4/5 GHz IEEE 802.11g/a WLAN Cardbus card
 Manufacturer: Agere Systems Netherlands BV
 Brand mark: Agere
 Model: 1102
 FCC ID: IMRCB1102

10.5.3 Uncertainty calculated for IEEE1528 : standard measurements (5 GHz).

<i>a</i>	<i>b</i>	<i>c</i>	<i>d</i>	$\frac{e}{f(d,k)}$	<i>f</i>	<i>g</i>	$\frac{h}{cxg/e}$	$\frac{i}{cxg/e}$	<i>k</i>	
Uncertainty Component	Section	Tol. (± %)	Prob. Dist.	Div.	ci (1-g)	ci (10-g)	$\frac{1-g}{ui}$ (±%)	$\frac{10-g}{ui}$ (±%)	vt	
Measurement System										
Probe Calibration	E2.1	12.0	N	1 or k	1	1	6.0	6.0	∞	
Axial Isotropy	E2.2	5.93	R	√3	0.7	0.7	2.4	2.4	∞	
Hemispherical Isotropy	E2.2	10.92	R	√3	1	1	6.3	6.3	∞	
Boundary Effect	E2.3	4.0	R	√3	1	1	2.3	2.3	∞	
Linearity	E2.4	0.93	R	√3	1	1	0.5	0.5	∞	
System Detection Limits	E2.5	1.0	R	√3	1	1	0.6	0.6	∞	
Readout Electronics	E2.6	1.0	N	1 or k	1	1	1.0	1.0	∞	
Response Time	E2.7	0.0	R	√3	1	1	0.0	0.0	∞	
Integration Time	E2.8	1.8	R	√3	1	1	1.0	1.0	∞	
RF Ambient Conditions	E6.1	3.0	R	√3	1	1	1.7	1.7	∞	
Probe Positioner Mechanical Tolerance	E6.2	^{0.6}	R	√3	1	1	0.3	0.3	∞	
Probe Positioning wrt Phantom Shell	E6.3	5.0	R	√3	1	1	2.9	2.9	∞	
SAR Evaluation Algorithms	E5.2	^{8.0}	R	√3	1	1	4.6	4.6	∞	
Test sample Related										
Test Sample Positioning	E4.2	10.0	R	√3	1	1	5.8	5.8	∞	
Device Holder Uncertainty	E4.1	5.0	R	√3	1	1	2.9	2.9	∞	
Output Power Variation	6.6.2	5.0	R	√3	1	1	2.9	2.9	∞	
Phantom and Tissue Parameters										
Phantom Uncertainty (shape and thickness)	E3.1	4.0	R	√3	1	1	2.3	2.3	∞	
Liquid Conductivity Target - tolerance	E3.2	7.5	R	√3	0.7	0.5	3.0	2.2	∞	
Liquid Conductivity - measurement uncert.	E3.3	5.0	R	√3	0.7	0.5	2.0	1.4	∞	
Liquid Permittivity Target tolerance	E3.2	1.0	R	√3	0.7	0.5	0.4	0.3	∞	
Liquid Permittivity - measurement uncert.	E3.3	3.3	R	√3	0.7	0.5	1.3	1.0	∞	
Combined Standard Uncertainty		$u_c = \sqrt{\sum_{i=1}^m c_i^2 \cdot u_i^2}$						13.5	13.3	
Expanded Uncertainty (95% confidence interval)		Normal k=1.96 $u_e = k \cdot u_c$						26.5%	26.1%	



Test specification(s): FCC/CA SAR Requirements
 Description of EUT: 2.4/5 GHz IEEE 802.11g/a WLAN Cardbus card
 Manufacturer: Agere Systems Netherlands BV
 Brand mark: Agere
 Model: 1102
 FCC ID: IMRCB1102

10.5.4 Uncertainty calculated for IEEE1528 : System performance check (2.4GHz).

<i>a</i>	<i>b</i>	<i>c</i>	<i>d</i>	$e = f(d,k)$	<i>f</i>	<i>g</i>	$h = \frac{cxg}{e}$	$i = \frac{cxg}{e}$	<i>k</i>	
Uncertainty Component	Section	Tol. (± %)	Prob. Dist.	Div.	ci (1-g)	ci (10-g)	$\frac{1-g}{ui}$ (±%)	$\frac{10-g}{ui}$ (±%)	vt	
Measurement System										
Probe Calibration	E2.1	10.0	N	1 or k	1	1	5.0	5.0	∞	
Axial Isotropy	E2.2	5.93	R	$\sqrt{3}$	0.7	0.7	2.4	2.4	∞	
Hemispherical Isotropy	E2.2	10.92	R	$\sqrt{3}$	1	1	6.3	6.3	∞	
Boundary Effect	E2.3	4.0	R	$\sqrt{3}$	1	1	2.3	2.3	∞	
Linearity	E2.4	0.93	R	$\sqrt{3}$	1	1	0.5	0.5	∞	
System Detection Limits	E2.5	1.0	R	$\sqrt{3}$	1	1	0.6	0.6	∞	
Readout Electronics	E2.6	1.0	N	1 or k	1	1	1.0	1.0	∞	
Response Time	E2.7	0.0	R	$\sqrt{3}$	1	1	0.0	0.0	∞	
Integration Time	E2.8	1.8	R	$\sqrt{3}$	1	1	1.0	1.0	∞	
RF Ambient Conditions	E6.1	3.0	R	$\sqrt{3}$	1	1	1.7	1.7	∞	
Probe Positioner Mechanical Tolerance	E6.2	^{0.6}	R	$\sqrt{3}$	1	1	0.3	0.3	∞	
Probe Positioning wrt Phantom Shell	E6.3	5.0	R	$\sqrt{3}$	1	1	2.9	2.9	∞	
SAR Evaluation Algorithms	E5.2	^{8.0}	R	$\sqrt{3}$	1	1	4.6	4.6	∞	
Dipole Related										
Dipole axis to liquid distance	8, E4.2	1.0	R	$\sqrt{3}$	1	1	0.6	0.6	∞	
Input Power & SAR Drift measurements	8, 6.6.2	1.5	R	$\sqrt{3}$	1	1	0.9	0.9	∞	
Phantom and Tissue Parameters										
Phantom Uncertainty (shape and thickness)	E3.1	4.0	R	$\sqrt{3}$	1	1	2.7	2.7	∞	
Liquid Conductivity Target - tolerance	E3.2	1.0	R	$\sqrt{3}$	0.7	0.5	0.4	0.3	∞	
Liquid Conductivity - measurement uncert.	E3.3	4.7	R	$\sqrt{3}$	0.7	0.5	1.9	1.4	∞	
Liquid Permittivity Target tolerance	E3.2	4.4	R	$\sqrt{3}$	0.6	0.5	1.5	1.3	∞	
Liquid Permittivity - measurement uncert.	E3.3	3.3	R	$\sqrt{3}$	0.6	0.5	1.1	1.0	∞	
Combined Standard Uncertainty		$u_c = \sqrt{\sum_{i=1}^m c_i^2 \cdot u_i^2}$						10.9	10.8	
Expanded Uncertainty (95% confidence interval)		Normal k=1.96 ue=k* u_c						21.3%	21.1%	



Test specification(s): FCC/CA SAR Requirements
 Description of EUT: 2.4/5 GHz IEEE 802.11g/a WLAN Cardbus card
 Manufacturer: Agere Systems Netherlands BV
 Brand mark: Agere
 Model: 1102
 FCC ID: IMRCB1102

10.5.5 Uncertainty calculated for IEEE1528 : System performance check (5 GHz).

<i>a</i>	<i>b</i>	<i>c</i>	<i>d</i>	$\frac{e}{f(d,k)}$	<i>f</i>	<i>g</i>	$\frac{h}{cxg/e}$	$\frac{i}{cxg/e}$	<i>k</i>	
Uncertainty Component	Section	Tol. (± %)	Prob. Dist.	Div.	ci (1-g)	ci (10-g)	$\frac{1-g}{u_i}$ (±%)	$\frac{10-g}{u_i}$ (±%)	vt	
Measurement System										
Probe Calibration	E2.1	12.0	N	1 or k	1	6.0	6.0	6.0	∞	
Axial Isotropy	E2.2	5.93	R	$\sqrt{3}$	0.7	2.4	2.4	2.4	∞	
Hemispherical Isotropy	E2.2	10.92	R	$\sqrt{3}$	1	6.3	6.3	6.3	∞	
Boundary Effect	E2.3	4.0	R	$\sqrt{3}$	1	2.3	2.3	2.3	∞	
Linearity	E2.4	0.93	R	$\sqrt{3}$	1	0.5	0.5	0.5	∞	
System Detection Limits	E2.5	1.0	R	$\sqrt{3}$	1	0.6	0.6	0.6	∞	
Readout Electronics	E2.6	1.0	N	1 or k	1	1.0	1.0	1.0	∞	
Response Time	E2.7	0.0	R	$\sqrt{3}$	1	0.0	0.0	0.0	∞	
Integration Time	E2.8	1.8	R	$\sqrt{3}$	1	1.0	1.0	1.0	∞	
RF Ambient Conditions	E6.1	3.0	R	$\sqrt{3}$	1	1.7	1.7	1.7	∞	
Probe Positioner Mechanical Tolerance	E6.2	^{0.6}	R	$\sqrt{3}$	1	0.3	0.3	0.3	∞	
Probe Positioning wrt Phantom Shell	E6.3	5.0	R	$\sqrt{3}$	1	2.9	2.9	2.9	∞	
SAR Evaluation Algorithms	E5.2	^{8.0}	R	$\sqrt{3}$	1	4.6	4.6	4.6	∞	
Dipole Related										
Dipole axis to liquid distance	8, E4.2	1.0	R	$\sqrt{3}$	1	1	7.5	7.5	∞	
Input Power & SAR Drift measurements	8, 6.6.2	2.0	R	$\sqrt{3}$	1	1	2.89	2.89	∞	
Phantom and Tissue Parameters										
Phantom Uncertainty (shape and thickness)	E2.1	4.0	R	$\sqrt{3}$	1	1	2.3	2.3	∞	
Liquid Conductivity Target - tolerance	E2.2	7.5	R	$\sqrt{3}$	0.7	0.5	3.0	2.2	∞	
Liquid Conductivity - measurement uncert.	E2.2	5.0	R	$\sqrt{3}$	0.7	0.5	2.0	1.4	∞	
Liquid Permittivity Target tolerance	E2.2	1.0	R	$\sqrt{3}$	0.7	0.5	0.4	0.3	5	
Liquid Permittivity - measurement uncert.	E2.2	3.3	R	$\sqrt{3}$	0.7	0.5	1.3	1.0	∞	
Combined Standard Uncertainty		$u_c = \sqrt{\sum_{i=1}^m c_i^2 \cdot u_i^2}$						11.0	10.9	
Expanded Uncertainty (95% confidence interval)		Normal k=1.96 $u_e = k \cdot u_c$						21.5%	21.3%	



Test specification(s): FCC/CA SAR Requirements
Description of EUT: 2.4/5 GHz IEEE 802.11g/a WLAN Cardbus card
Manufacturer: Agere Systems Netherlands BV
Brand mark: Agere
Model: 1102
FCC ID: IMRCB1102

11 List of utilized test equipment.

Inventory number	Description	Brand	Model
03012	Network Analyzer (VNA)	Rohde & Schwarz	ZVC
03013	VNA Calibration Kit	Rohde & Schwarz	
12483	Guidehorn	EMCO	3115
12484	Guidehorn	EMCO	3115
12488	Guidehorn 18 - 26.5 GHz	EMCO	RA42-K-F-4B-C
12533	Signalgenerator	MARCONI	2032
12559	Digital storage oscilloscope	Le Croy	9310M
12561	DC Power Supply 20A/70V	DELTA	SM7020D
12605	calibrated dipole 28MHz-1GHz	Emco	3121c
12608	HF milliwattmeter	Hewlett Packard	HP435a
12609	Power sensor 10MHz-18GHz	Hewlett Packard	HP8481A
3664	Spectrum analyzer	HP	HP8593E
13078	Preamplifier 0.1 GHz - 12 GHz	Miteq	AMF-3D-001120-35-4p
13526	Signalgenerator 20 GHz	Hewlett & Packard	83620A
13594	Preamplifier 10 GHz - 25 GHz	Miteq	AMF-6D-100250-10p
14450	2.4 GHz bandrejectfilter	BSC	XN-1783
99068	Detector N-F/BNC-F	Radiall	R451576000
99076	Bandpassfilter 4 - 10 GHz	Reactel	7AS-7G-6G-511
99112	Tripod	Chase	--
99136	Bandpassfilter 10 - 26.5 GHz	Reactel	9HS-10G/26.5G-S11
03011	RF Amplifier (1 Watt)	IndexSAR	
03010	Bench-top Robot	Mitsubishi	RV-E2
03009	Calibration dipole 2450	IndexSAR	IXD 0022
03008	Calibration dipole 5800	IndexSAR	
03007	Directional Coupler	Hewlett & Packard	779D
03006	Attenuator (3 dB)	Hewlett & Packard	
03005	Hygrometer/room temperature meter		
03004	SAR Probe	IndexSAR	S/N 0134
03003	Phantom box	IndexSAR	N.A.
03002	TEM line liquid measurement	IndexSAR	N.A.
03012	Waveguide W-137	IndexSAR	N.A.
03013	Calibrated mercury thermometers	NMI	15-30 C

12 Test software.

During the tests as indicated in this test report the TNO EPS SARA2 system was operated with:

SARA2 system v.0.281

Mitsubishi robot controller firmware revision RV-E2 Version C9a

IXA-10 Probe amplifier Version 2.4

DiLine Dielectric Kit Software v 0.109 (12/6/2003)