



Measurements done as per request of the FCC, EA922213, corr nr. 26846.

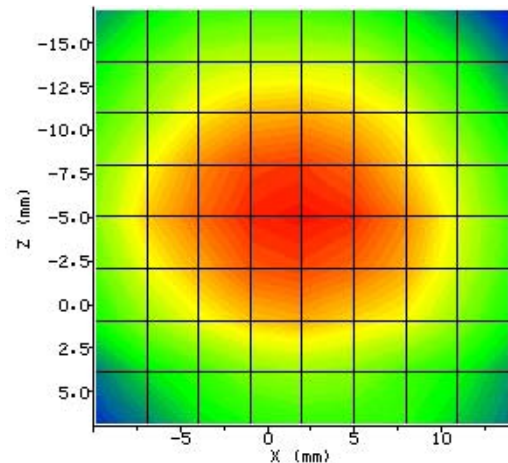
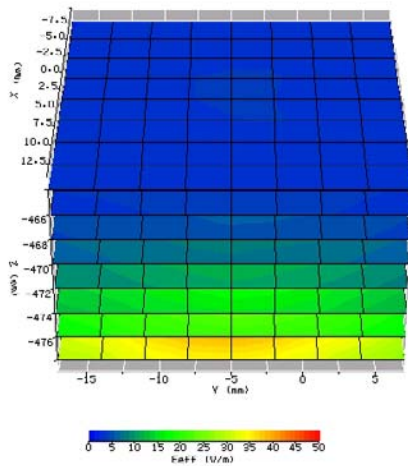
Please note that:

- 1) Probe alignment has not changed from scan to scan.
- 2) Waveguide alignment has not changed from scan to scan
- 3) Scan size and step size is not changed from scan to scan.
- 4) Probe calibration has changed, using the most appropriate calibration
- 5) The liquid 48.6 / 7.4 is deviating from the used probe calibration (48.2 / 6.00)
- 6) Waveguide tuning changes with liquid, new frequency and power calibration done.
- 7) Achieved SAR values are scaled with waveguide power: (24 dBm is  $\frac{1}{4}$  W)

See next pages for results

<b>Device Under Test:</b>	WAVEGUIDE
<b>Position / Channel</b>	5745 MHz
<b>System / software:</b>	SARA v2.3
<b>DATE</b> [dd/mm/yyyy]	02/06/2004
<b>Phantom S/No:</b>	<input type="checkbox"/> Box phantom

Notes:	3 <sup>rd</sup>	4 <sup>th</sup>	3 <sup>rd</sup> VPM	4 <sup>th</sup> VPM
<b>SAR 1g [W/kg]:</b>	n.a.	n.a.	n.a.	9.651
<b>SAR 10g [W/kg]:</b>	n.a.	n.a.	n.a.	4.118
Test Frequency [MHz]:	5745	No. of steps x and y		8
Antenna Configuration:	WAVEGUIDE	Stepsize x and y [mm]		3
Power [dBm]:	24.0	No of steps z		7
Type of Modulation:	CW	Stepsize z [mm]		2
Modn. Duty Cycle [%]:	100	Dist probe tip – phantom shell [mm]		1
Probe Serial Number:	131	Ambient Temperature [C]		22
Probe cal file	131-5800-head	Relative Humidity: [%]		55
Probe Conversion Factor\	0.435	SAR Drift: [dB]		-0.11
Probe battery check [d/m/y]:	02/06/2004	Max E-field [V/m in liquid]		45.2
Liquid Simulant:	Head	Location of max. [mm]		
Relative Permittivity:	35.3	X=	[mm]	1.4
Conductivity: [S/m]:	5.27	Y=	[mm]	-4.7
Liquid Temperature [C]:	20.7	Z=	[mm]	-478



E<sub>eff</sub> (V/m): Plane at -478 mm



<b>Device Under Test:</b>	WAVEGUIDE
<b>Position / Channel</b>	5780Hz
<b>System / software:</b>	SARA v2.3
<b>DATE</b> [dd/mm/yyyy]	02/06/2004
<b>Phantom S/No:</b>	<input type="checkbox"/> Box phantom

Notes:	3 <sup>rd</sup>	4 <sup>th</sup>	3 <sup>rd</sup> VPM	4 <sup>th</sup> VPM
<b>SAR 1g [W/kg]:</b>	n.a.	n.a.	n.a.	22.938
<b>SAR 10g [W/kg]:</b>	n.a.	n.a.	n.a.	9.610
Test Frequency [MHz]:	5780	No. of steps x and y		8
Antenna Configuration:	WAVEGUIDE	Stepsize x and y [mm]		3
Power [dBm]:	24.0	No. of steps z		7
Type of Modulation:	CW	Stepsize z [mm]		2
Modn. Duty Cycle [%]:	100	Dist probe tip – phantom shell [mm]		1
Probe Serial Number:	131	Ambient Temperature [C]		23
Probe cal file	131-5800-body	Relative Humidity: [%]		53
Probe Conversion Factor <sup>1</sup>	0.750	SAR Drift: [dB]		0.02
Probe battery check [d/m/y]:	02/06/2004	Max E-field [V/m in liquid]		63.02
Liquid Simulant:	Head	Location of max. [mm]		
Relative Permittivity:	48.6	X=	[mm]	0
Conductivity: [S/m]:	7.4	Y=	[mm]	-6.3
Liquid Temperature [C]:	21.9	Z=	[mm]	-478.0

