

dt 79R3041
-201
X89712P

VALOR
FL1110

SMC
83C7890F P
C9652
G-01451-4

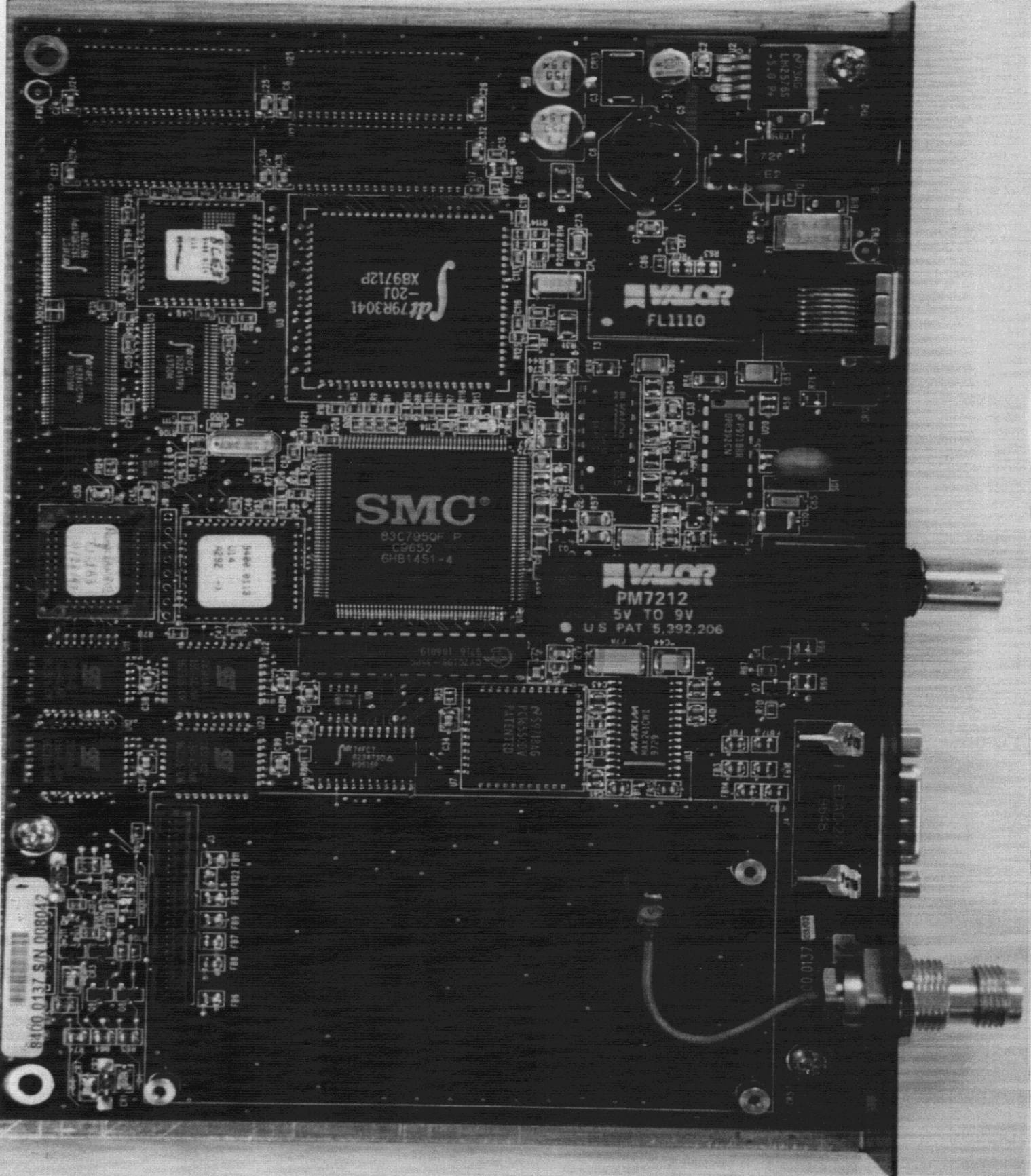
VALOR
PM7212
5V TO 9V
U.S. PAT. 5,392,206

8400 0137 S/N 008042

20092

EDAC 21
96-16

00 0137 VALOR



SMC
79R3041
-201
XB9712P

SMC
83C7950F P
C9652
6H61451-4

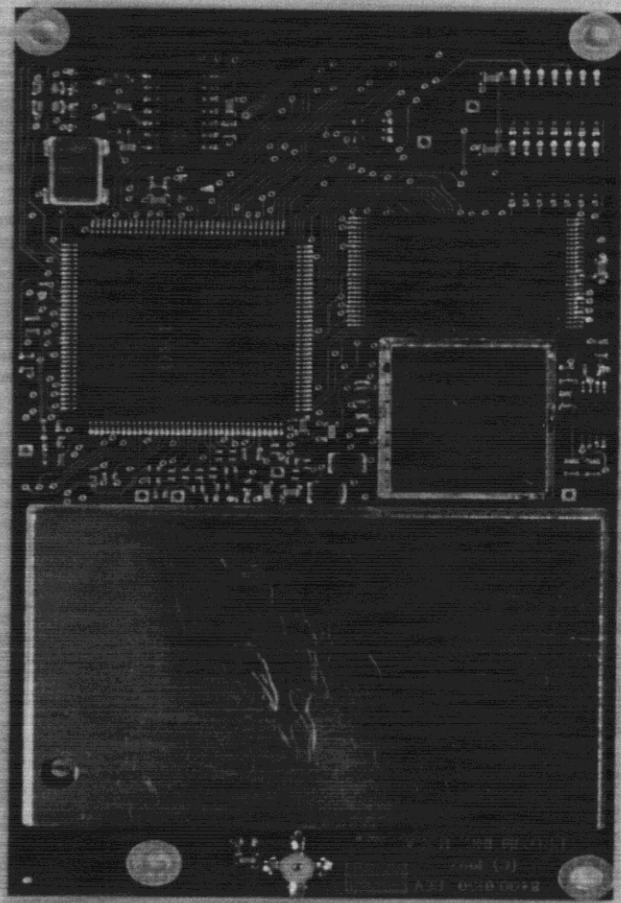
VALOR
FL1110

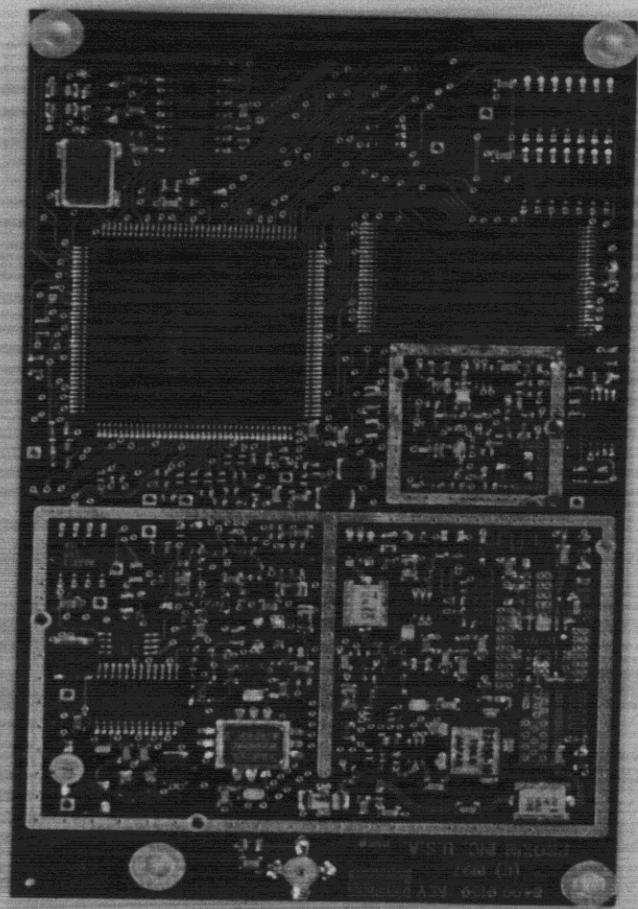
VALOR
PM7212
5V TO 9V
U.S. PAT. 5,392,206

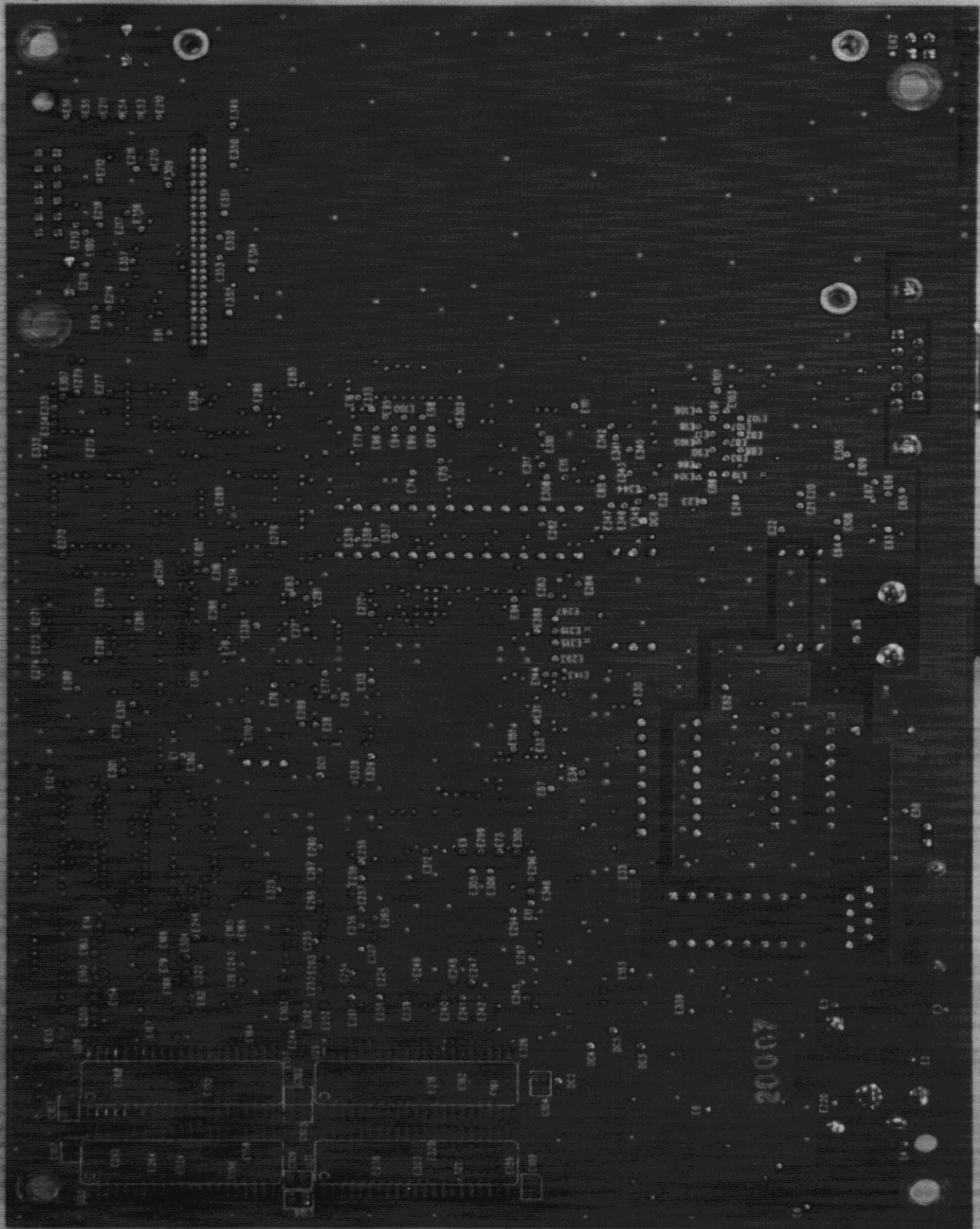
8400 0137 SN 008047

785 787 788 789 790 791 792 793

EMC
00 0137







20007

20007

