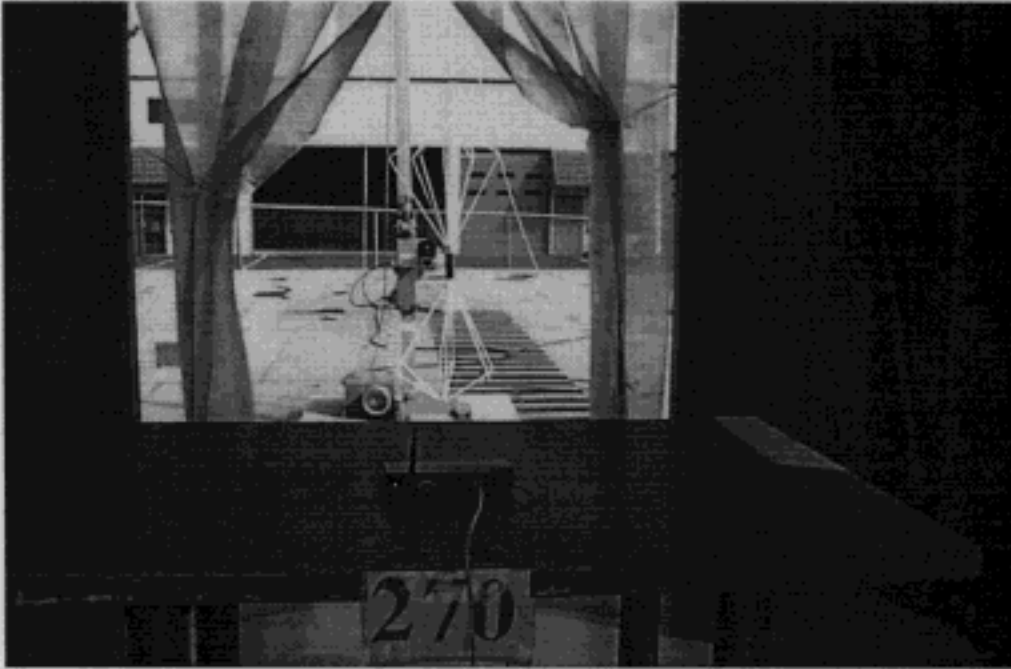
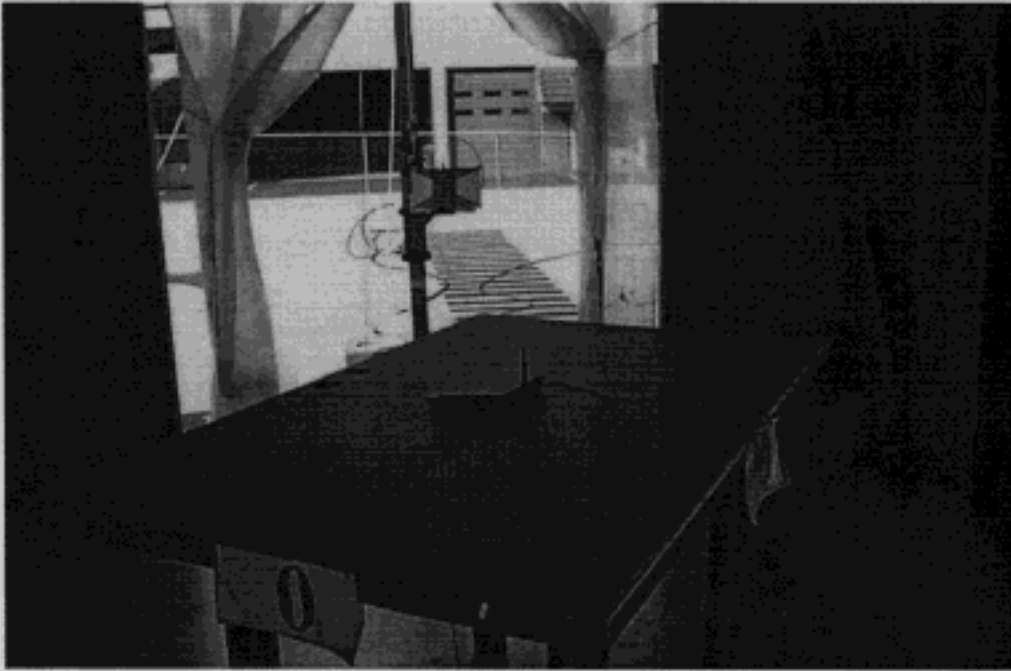


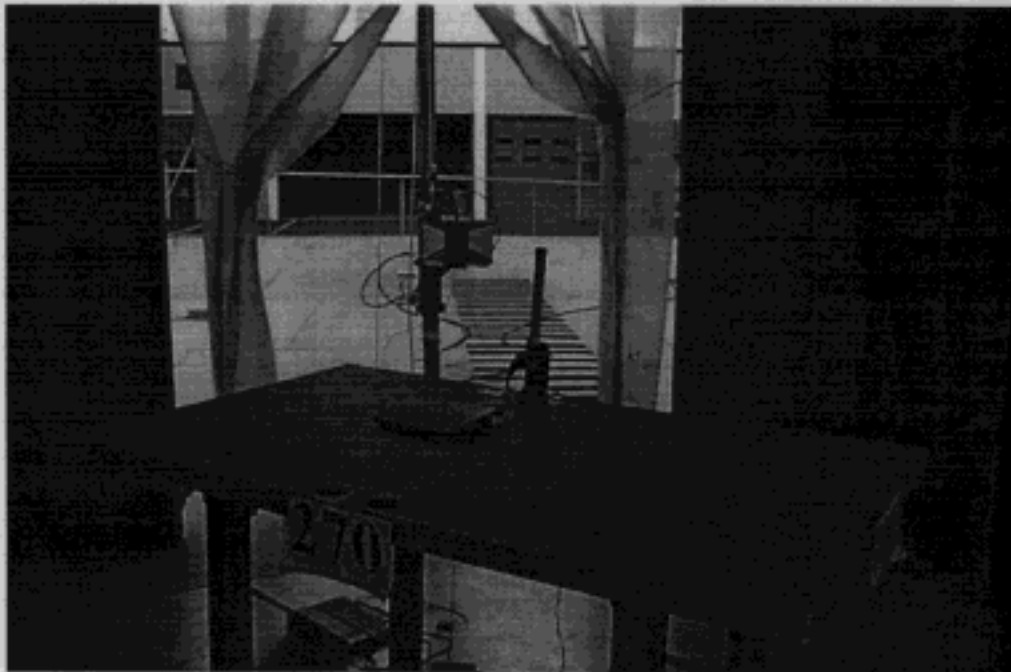
**FCC 15.207 Class B  
Conducted Emissions**



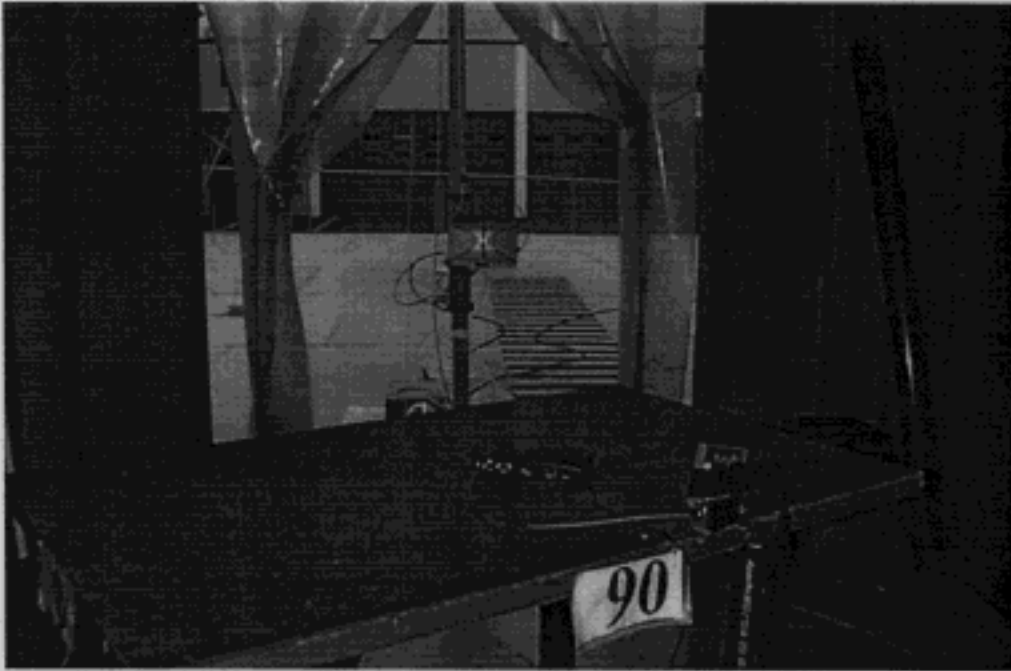
**FCC 15.209 Class B  
Radiated Emissions**



**FCC 15.205 Restricted Band  
1.0 dBi Omnidirectional Antenna**



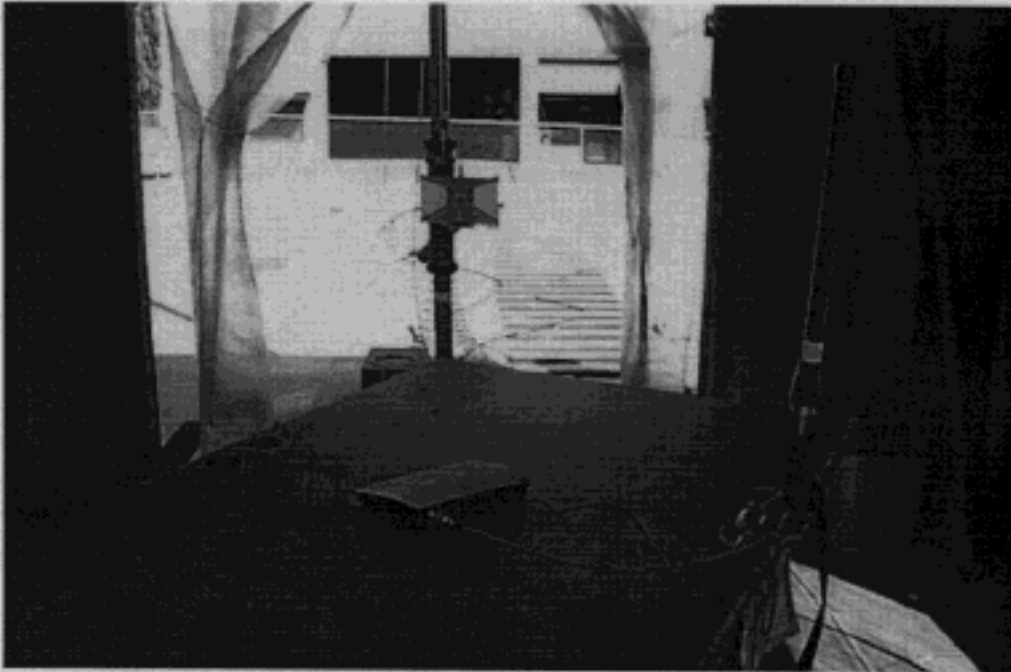
**FCC 15.205 Restricted Band  
5.15 dBi Omnidirectional Antenna**



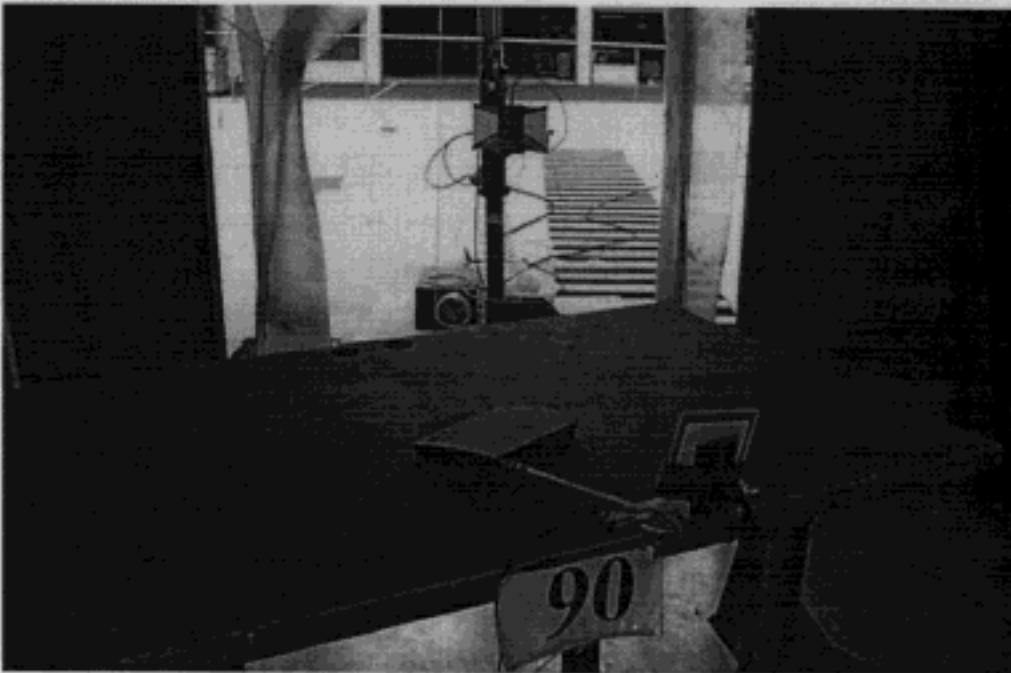
**FCC 15.205 Restricted Band  
8.5 dBi Patch Antenna**



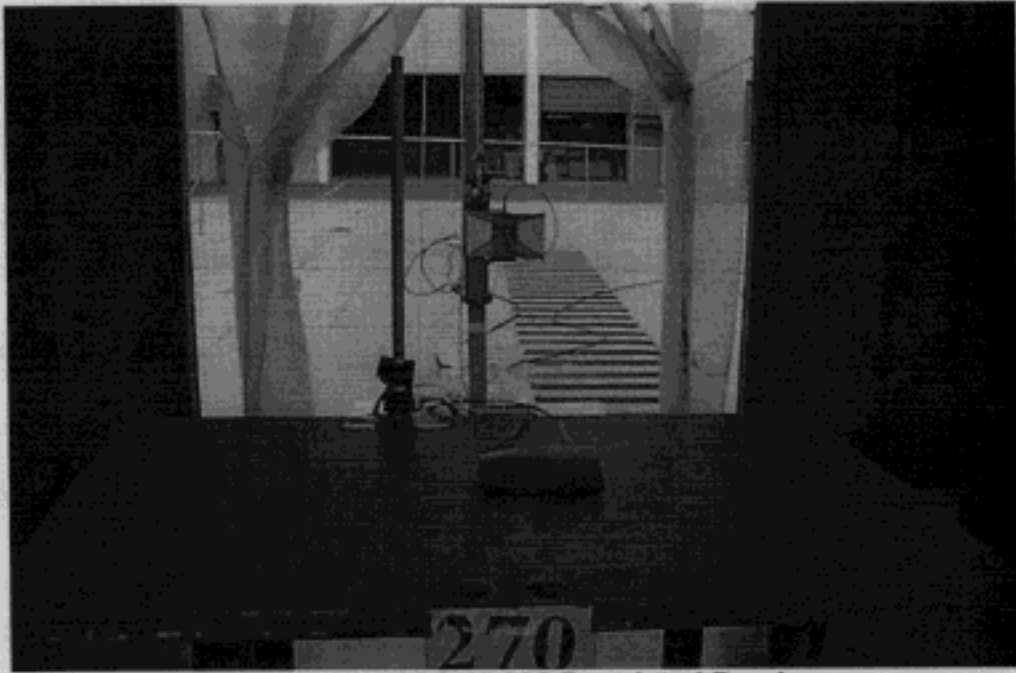
**FCC 15.205 Restricted Band  
5.1 dBi Omnidirectional Antenna**



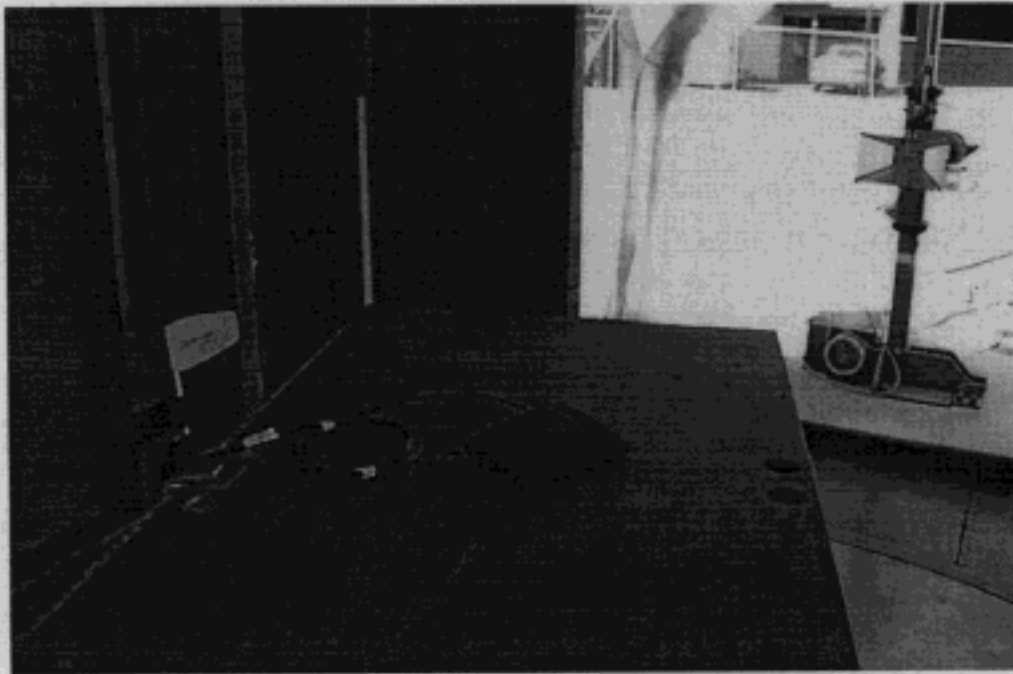
**FCC 15.205 Restricted Band  
9.0 dBi Omnidirectional Antenna**



**FCC 15.205 Restricted Band  
9.0 dBi Patch Antenna**



**FCC 15.205 Restricted Band  
8.0 dBI Omnidirectional Antenna**



**FCC 15.205 Restricted Band  
5.0 dBI Omnidirectional Antenna**



**FCC 15.247 Conducted RF**