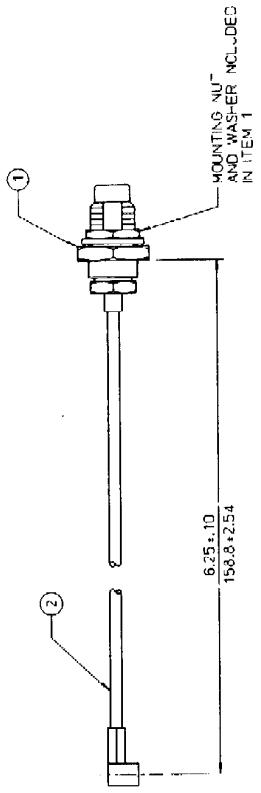


REV. STA.		REV. STATUS	DESCRIPTION	DATE	APPROVED
5	4	3	2	1	
REV. STA.		REV. STATUS	DESCRIPTION	DATE	APPROVED
B		B	-001 RELEASED AT REV. B		DRAWN & APPROVED



- NOTES: UNLESS OTHERWISE SPECIFIED
1. MARK SHIPPING CONTAINER WITH 063851 AND DASH NUMBER TO WHICH MANUFACTURED PER SPECIFICATION 906827.
 2. CHANGES REQUIRE SAC APPROVAL.
 3. DIMENSIONS: INCHES
MM

-001

SEE SEPARATE PARTS LIST FOR 063851-001

CAD DREF-063851.1a		SYSTEM - HP/ME30	
UNLESS OTHERWISE SPECIFIED:		DIMENSIONS ARE IN INCHES.	
.XX =		.XXX ±	
ANGLES =		---	
THIS DRAWING SHALL NOT BE DUPLICATED OR USED FOR ANY PURPOSE OTHER THAN THAT FOR WHICH PROVIDED. THE INFORMATION DISCLOSED HEREIN ORIGINATES BY AND IS THE PROPERTY OF INTERMEC CORPORATION AND EXCEPT FOR RIGHTS EXPRESSLY GRANTED BY WRITTEN CONSENT, SUCH INFORMATION SHALL NOT BE DISCLOSED OR USED IN ANY MANNER IN CONNECTION WITH THE SALE, MANUFACTURING AND REPRODUCTION OF ANY EQUIPMENT OR PARTS THEREOF.		DRAWN: JFC/11-11-96	
CHECKED: R-200GL/MD 1-14-97		DATE: 11-11-96	
RESP. ENG. D.GILPIN 1-17-97		APPROVALS:	
C/A		DATE	
MFG. ENG. ODREW 1-17-97		11-11-96	
SAC: D.300DR/CH 1-17-97		SCALE: NONE	
SHEET NUMBER: 063851		SHEET: 1 OF 1	
TITLE: CABLE ASSY, SMC ANTENNA, 2.4GHZ		DRAWING NUMBER: B	
SHEET: 1 OF 1		SHEET: 1 OF 1	
501 361-A AVENUE WEST EVERETT, MA 08203-9280		Intermec	

USED on 562010 D

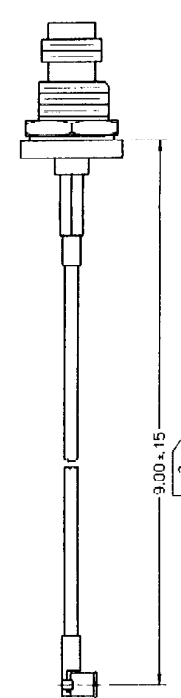
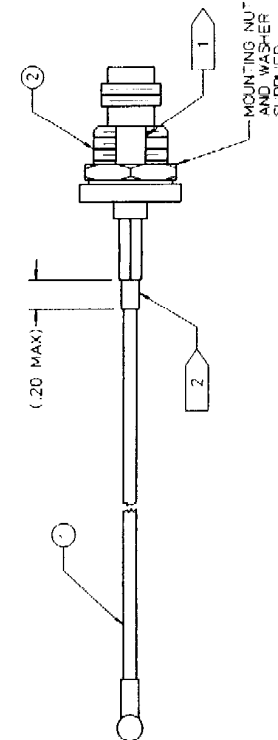
REV	STATUS	DESCRIPTION	DATE	BY	APPROVED
1	ISSUED				
2	REVISED				
3	REVISED				
4	REVISED				

REV	DESCRIPTION	DATE	BY	APPROVED
1	ISSUED			
2	REVISED			
3	REVISED			
4	REVISED			

REV	DESCRIPTION	DATE	BY	APPROVED
1	ISSUED			
2	REVISED			
3	REVISED			
4	REVISED			

REV	DESCRIPTION	DATE	BY	APPROVED
1	ISSUED			
2	REVISED			
3	REVISED			
4	REVISED			

- NOTES: UNLESS OTHERWISE SPECIFIED
- CABLE ASSY. ITEM 1 MUST BE ORIENTED TO FLAT ON BULKHEAD INC CORNER, AS SHOWN. #49.
 - SHANK TUBING .20 MAX.
 - SHORTEN COAX CABLE TO ACHIEVE DIMENSION SHOWN.
 - BULK PACKAGE PARTS (25 MAX PER BOX) DO NOT INDIVIDUALLY BAG. MARK SHIPPING CONTAINER WITH 066148 AND DASH NUMBER TO WHICH MANUFACTURED PER SPECIFICATION 606427.
 - CHANGES REQUIRE SAC APPROVAL.
 - CABLE ASSEMBLY MUST MEET SWR SPECIFICATION OF <1.1 IN THE FREQUENCY RANGE OF 800 MHZ TO 2.6 GHZ.
 - TEST CABLE ASSY PERFORMANCE - VSWR: 1.50 MAX AT 2.5 GHZ.



SEE SEPARATE PARTS LIST FOR 066148-002

APPROVALS	DATE	TITLE
DRAWN: G. GRAVEN	7-15-97	Intermec
CHECKED: PHOENIX	10-23-97	
RESP ENG: BENSON	10-29-97	
DA: T. ANDERSON	10-27-97	
WFO ENG: V. LORO	10-27-97	
SAC: D. BREW	10-30-97	
D		

CAD DBREF: 066148.1.C
SYSTEM: HP4ME30

UNLESS OTHERWISE SPECIFIED, DIMENSIONS ARE IN INCHES.
.XXX ±
.XXX ±
ANGLES ±

NOTICE
THIS DRAWING SHALL NOT BE DUPLICATED OR USED FOR ANY PURPOSE OTHER THAN THAT FOR WHICH PROVIDED. THE INFORMATION DISCLOSED HEREIN ORIGINATED BY AND IS THE PROPERTY OF INTERMEDIUM CORPORATION AND EXCEPT FOR RIGHTS EXPRESSLY GRANTED BY WRITTEN CONSENT, SUCH INFORMATION SHALL NOT BE DISCLOSED OR USED IN ANY MANNER BY INTERMEDIUM CORPORATION, ITS AFFILIATES, OR ANY OTHER PARTY WITHOUT THE WRITTEN SALE, MANUFACTURING AND REPRODUCTION RIGHTS THEREON.

REV	DESCRIPTION	DATE	BY	APPROVED
1	ISSUED			
2	REVISED			
3	REVISED			
4	REVISED			

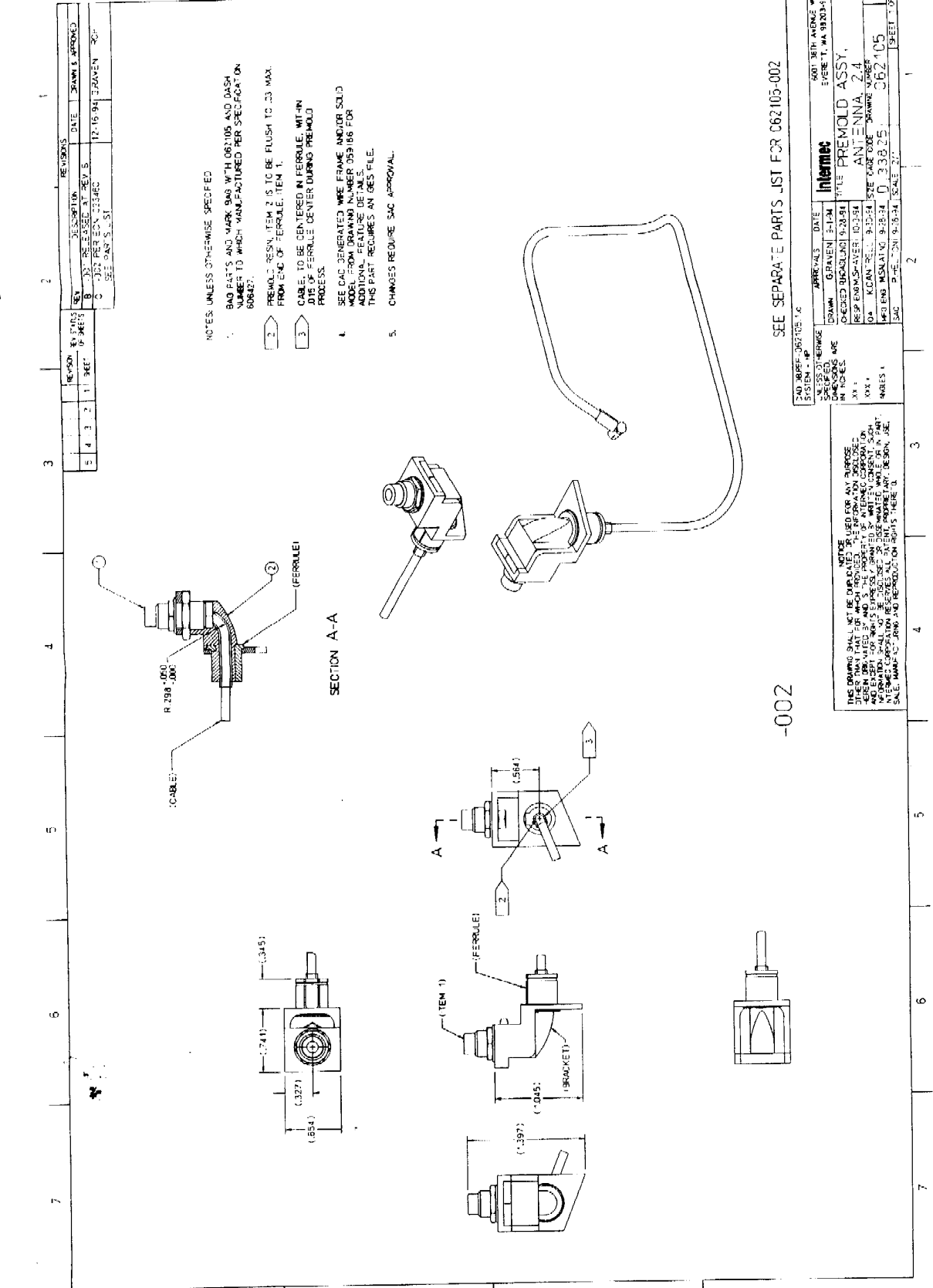
REV	DESCRIPTION	DATE	BY	APPROVED
1	ISSUED			
2	REVISED			
3	REVISED			
4	REVISED			

REV	DESCRIPTION	DATE	BY	APPROVED
1	ISSUED			
2	REVISED			
3	REVISED			
4	REVISED			

REV	DESCRIPTION	DATE	DRAWN & APPROVED
B	REVISED TO REV 5	12/16/94	DAVEN
C	REVISED TO REV 6		
D	REVISED TO REV 7		

NOTES: UNLESS OTHERWISE SPECIFIED
 BAG PART'S AND MARK 948 WITH 062105 AND DASH NUMBER TO WHICH MANUFACTURED PER SPECIFICATION 606427.

- PREMOLD RESIN, ITEM 2 IS TO BE FLUSH TO .03 MAX. FROM END OF FERRULE, ITEM 1.
- CABLE TO BE CENTERED IN FERRULE, WITH IN JOIS OF FERRULE CENTER DURING PREMOLD PROCESS.
- SEE CAD GENERATED WIRE FRAME AND/OR SOLID MODEL FROM DRAWING NUMBER 059186 FOR ADDITIONAL FEATURE DETAILS. THIS PART REQUIRES AN IES FILE.
- CHANGES REQUIRE SAC APPROVAL.

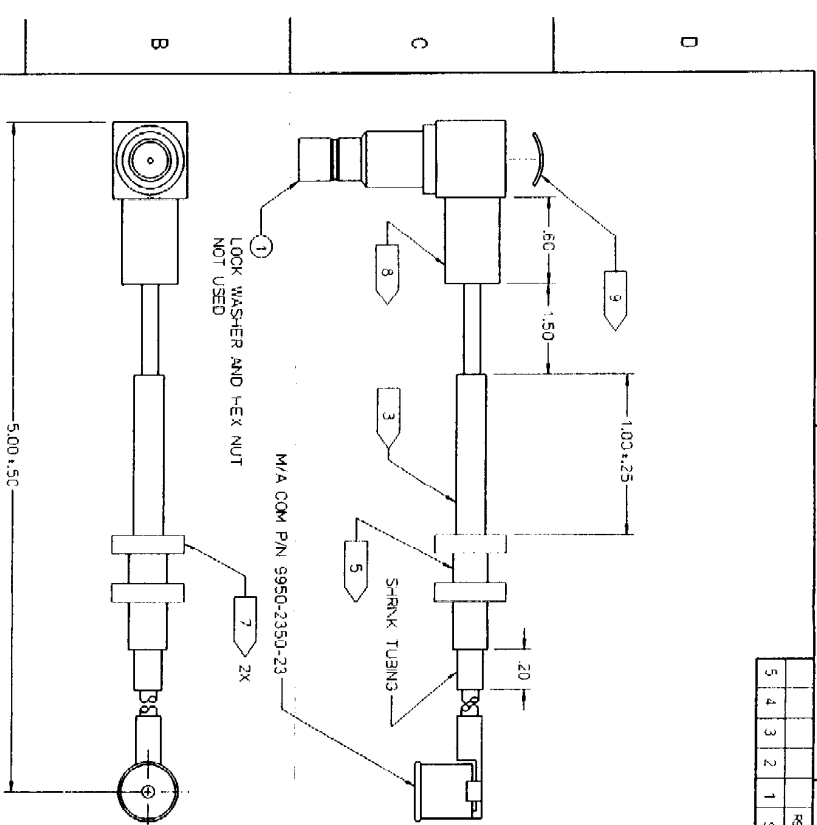


SEE SEPARATE PARTS LIST FOR 062105-002

APPROVALS	DATE	TITLE
INFORMES	9-23-94	PREMOLD ASST.
RESIN	9-23-94	ANTENNA 2.4
WIRE	9-23-94	WIRE
SCALE	0.338:1	

-002

REV	DESCRIPTION	DATE	DRAWN & APPROVED
H	-001 PER EON 027612	4-21-98	T-HEA RCH
J	-001 PER EON 027613	5-28-98	L-FOTI RCH



- NOTES: UNLESS OTHERWISE SPECIFIED
1. BULK PACKAGE PARTS (MAXIMUM 100 PARTS PER CONTAINER) TO PROVIDE ADEQUATE PROTECTION AGAINST SHIPPING DAMAGE AND MARK PACKAGE WITH 083816 AND DASH NUMBER TO WHICH MANUFACTURED PER SPECIFICATION 605427.
 2. THIS CABLE ASSEMBLY MUST BE SUPPLIED AS A FULL RECOGNIZED WIRING HARNESS. THE FOLLOWING MARKINGS ARE REQUIRED ON THE SMALLEST BUNDLE OR UNIT CONTAINER THAT THE CABLE ASSEMBLY IS SUPPLIED IN:
 - ® **RAI**
 - WIRING HARNESS

3. MARK CABLE ASSY WITH 083816 AND DASH NUMBER TO WHICH MANUFACTURED PER SPECIFICATION 605427.
4. REMOVED.
5. SLIP 2 FERRET BEADS, FAIRFAX PRODUCTS P/N 2643005701, OVER CABLE. LOCATE AND SECURE WITH #EAT SHRINK TUBING AS SHOWN.
6. CHANGES REQUIRE SAC APPROVAL.
 - 7. .125 THICK PORON, ROGERS P/N 4701-40-20123, (BL <) TO BE PLACED ON CABLE BETWEEN FERRETS AND SHRINK TUBING AS SHOWN. C.D. OF PORON TO BE .100±.030. I.D. TO BE .100±.020.
 - 8. RAYCHEM 3/16 OVP OVER COMP FERRET.
 - 9. CAP IS TO BE PERMANENTLY ELDED IN PLACE.

-001

NOTICE
THIS DRAWING SHALL NOT BE DUPLICATED OR USED FOR ANY PURPOSE OTHER THAN THAT FOR WHICH IT WAS PREPARED. THE INFORMATION DISCLOSED HEREIN IS UNCLASSIFIED EXCEPT WHERE SHOWN OTHERWISE. ALL INFORMATION SHALL NOT BE DISCLOSED OR REPRODUCED WITHOUT THE WRITTEN PERMISSION OF THE MANUFACTURER. ALL PATENT, PROPRIETARY DESIGN, USE, SALE, MANUFACTURING AND REPRODUCTION RIGHTS HERETO.

CAD DREF: 063816-11		UNLESS OTHERWISE SPECIFIED DIMENSIONS ARE IN INCHES	
SYSTEM: HP		ANGLES:	
APPROVALS:	DATE	DRAWN:	DATE
3 RAYE	12-5-95	3 RAYE	12-5-95
CHECKED:	DATE	TITLE	
ENG RZOLER	3-23-95	CABLE ASSY, SWB/D0SMT 2425	
SIZE:	CAGE CODE	DRAWING NUMBER	REV
A	339 25	063816	J
SCALE:	SCALE:	SHEET:	OF:
1:1	NONE	1	1

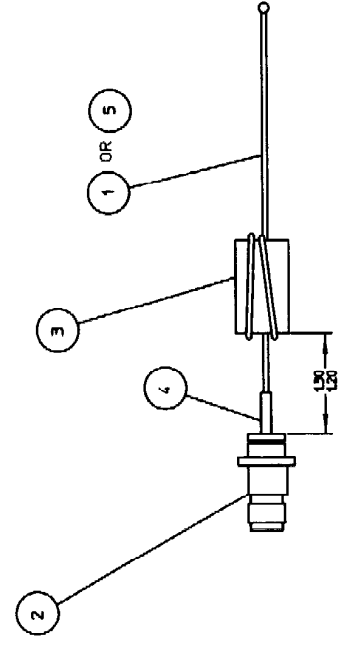
SEE SEPARATE PARTS LIST FOR 063816-001

REV	ECN	REVISION-DESCRIPTION	DATE	BY	CHK
A	23727	RELEASE			
B	24190	1) ITEM 1 WAS 321-465-001 2) ITEM 2 WAS 311-731-001	11/23/95	MRW	
C	24423	1) ADDED 321-498-001	1-15-96	BEE	
D	24751	1) WAS 311-731-002 2) DELETED 321-498-001	5-8-96	BEE	
E	25027	1) ADDED 321-498-001	10-3-96	BEE	
F	25517	1) ADDED -002 STATUS	5-19-97	BEE	

CD	QTY	DASH NO.	DESCRIPTION	PART NO.	ITEM
-	1		CABLE, COAXIAL 12' LG	321-489-002	1
1	1		CONNECT. SPECIAL TNC TYPE	311-695-001	2
-	1		FERRITE BEAD	309-031-202	3
5	5		HEATSHRINK TUBING	321-498-001	4
1	1		CABLE, COAXIAL 8' LG	321-489-001	5

ASSEMBLY DESCRIPTION

NOTE:
 1. DOUBLE LOOP COAXIAL CABLE (ITEM 1) THRU FERRITE BEAD (ITEM 3).
 2. DO NOT SHORTEN ITEM 1 BEFORE ASSEMBLY



MATERIAL	
FINISH	
NORAND CORPORATION 200 Second Street SE Atlanta, GA 30334-5000 Phone: 404/525-7000	
DRAWN	WEBBER
CHECKED	KUNERT
DATE	8-3-95
DATE	8-3-95
SCALE	1/1
USED ON	6710
DRAWING TITLE	CABLE, 2.4GHz RADIO
DRAWING NO.	226-075
DASH NO.	-001

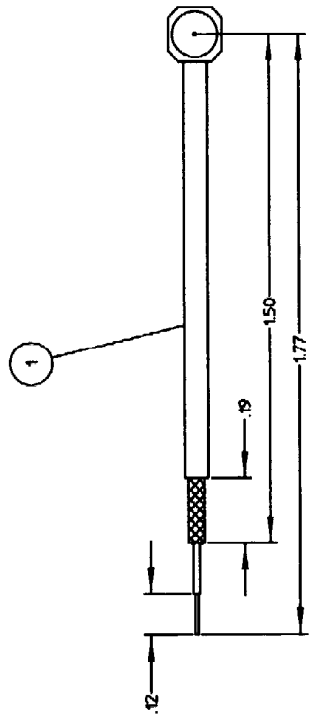
REVISION STATUS OF SHEETS	1	2	3	4	5
UNLESS OTHERWISE SPECIFIED DIMENSIONS ARE IN INCHES AND THE TOLERANCES BELOW ARE APPLICABLE					
DECIMAL ANGULAR .125 .250 .500 .750 1.000 1.500 2.000 3.000 4.000 5.000					

1
2
3
4

1
2
3
4

REV	ECN	REVISION-DESCRIPTION	DATE	BY	CHK
A	24233	RELEASED			

ASSEMBLY DESCRIPTION		
QTY	DESCRIPTION	ITEM
1	CABLE, COAXIAL 12' LG	1



MATERIAL	
FINISH	
NORAND CORPORATION 25 West 34th St New York, NY 10018-5000	
DRAWN MEDEHA	CHECKED SRK
DATE 11-6-95	DATE 11-6-95
SCALE 4/1	USED ON RMBU/RM90
DRAWING TITLE CABLE, 2.4GHZ RADIO	
DRAWING NO. 226-133	DASH NO. XXX

REVISION PARTS SHEETS	1	2	3	4	5
TOLERANCES UNLESS SPECIFIED DIMENSIONS ARE IN INCHES AND THE TOLERANCES BELOW ARE APPLICABLE: DECIMAL XX .XX XXX .XXX XXXX .XXXX					

1
2
3
4

D
C
B
A

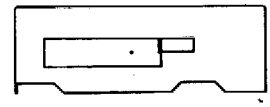
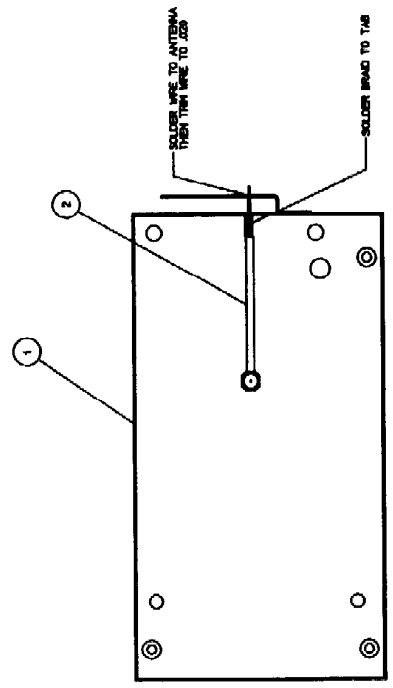
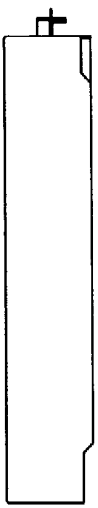
1
2
3
4

NOTES:

1 SURFACE ASSEMBLIES TO BE USED ACCORDING DOCUMENT 434-000-002.
 ALL SURFACES TO BE TO SURFACES.

QTY	PART NO.	ASSEMBLY DESCRIPTION	DATE	BY
1	794-307-501	BASE CAN MOUNT		
1	794-307-501	CABLE 2.0000 INCH		
1	794-307-501	BASE CAN MOUNT		

REV	QTY	REVISION DESCRIPTION	DATE	BY
A	14223	RELEASED		



REV	QTY	REVISION DESCRIPTION	DATE	BY
A	14223	RELEASED		

REV	QTY	REVISION DESCRIPTION	DATE	BY
A	14223	RELEASED		

REV	QTY	REVISION DESCRIPTION	DATE	BY
A	14223	RELEASED		

REV	QTY	REVISION DESCRIPTION	DATE	BY
A	14223	RELEASED		

REV	QTY	REVISION DESCRIPTION	DATE	BY
A	14223	RELEASED		

REV	QTY	REVISION DESCRIPTION	DATE	BY
A	14223	RELEASED		

REV	QTY	REVISION DESCRIPTION	DATE	BY
A	14223	RELEASED		

REV	QTY	REVISION DESCRIPTION	DATE	BY
A	14223	RELEASED		

REV	QTY	REVISION DESCRIPTION	DATE	BY
A	14223	RELEASED		

REV	QTY	REVISION DESCRIPTION	DATE	BY
A	14223	RELEASED		

BASE CAN SUB-ASSY
 794-307-501

BASE CAN SUB-ASSY
 794-307-501

BASE CAN SUB-ASSY
 794-307-501

BASE CAN SUB-ASSY
 794-307-501

BASE CAN SUB-ASSY
 794-307-501

BASE CAN SUB-ASSY
 794-307-501

BASE CAN SUB-ASSY
 794-307-501

BASE CAN SUB-ASSY
 794-307-501

BASE CAN SUB-ASSY
 794-307-501

BASE CAN SUB-ASSY
 794-307-501

BASE CAN SUB-ASSY
 794-307-501