



**Symphony Cordless Modem**

**Model 4500**

FCC ID: 1MKU 156K

FCC Reg. No. 1MKUSA-XXXXX-XX-X

Ringer Equivalent: XXX

Reqd Conn: USDC-RJ11CC

Complies with FCC Rules Part 68 and with Part 15 of the FCC Rules

Operation is subject to the following two conditions:

(1) this device may not cause harmful interference, and (2) this device must accept any interference received, including interference that may cause undesired operation.

Proxim Inc., Menlo Park, CA

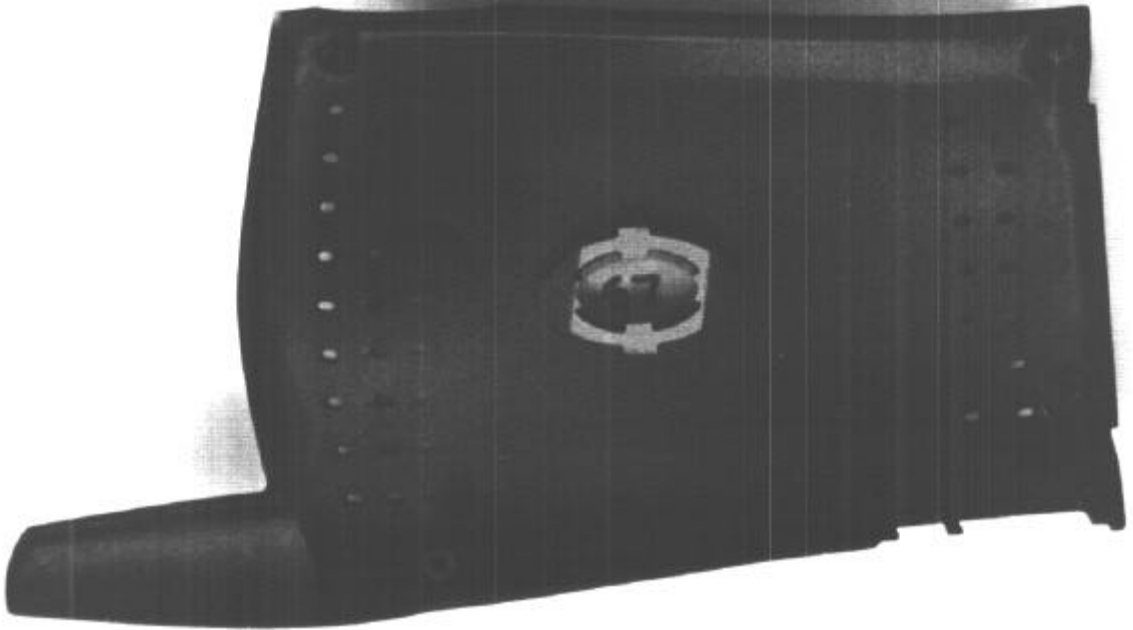
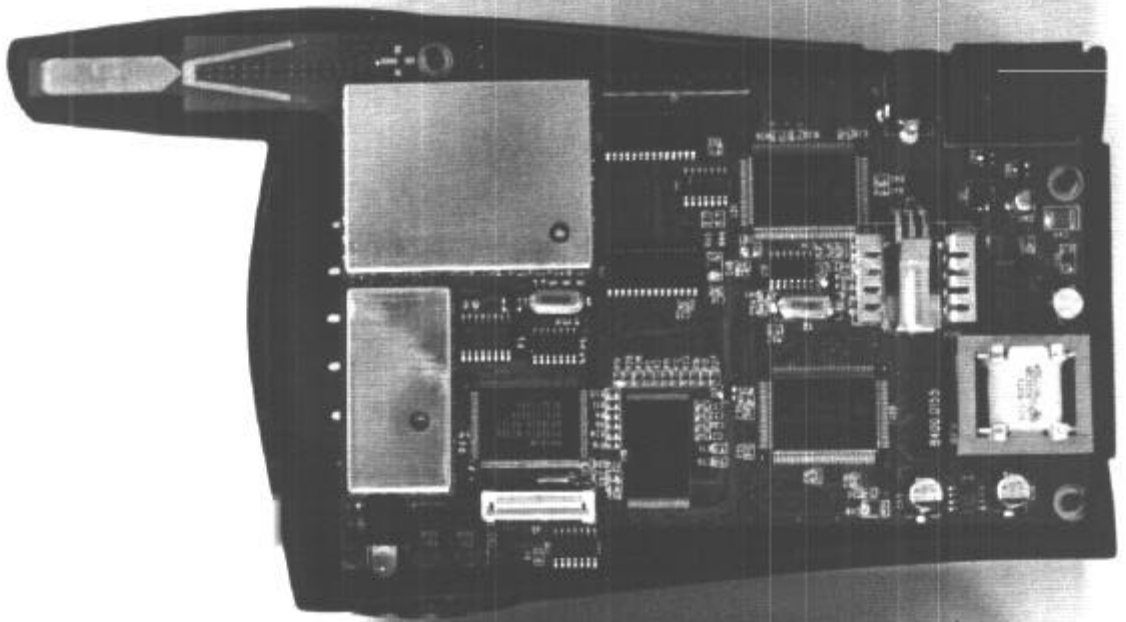
Made in USA

**PHYSICAL ADDRESS**

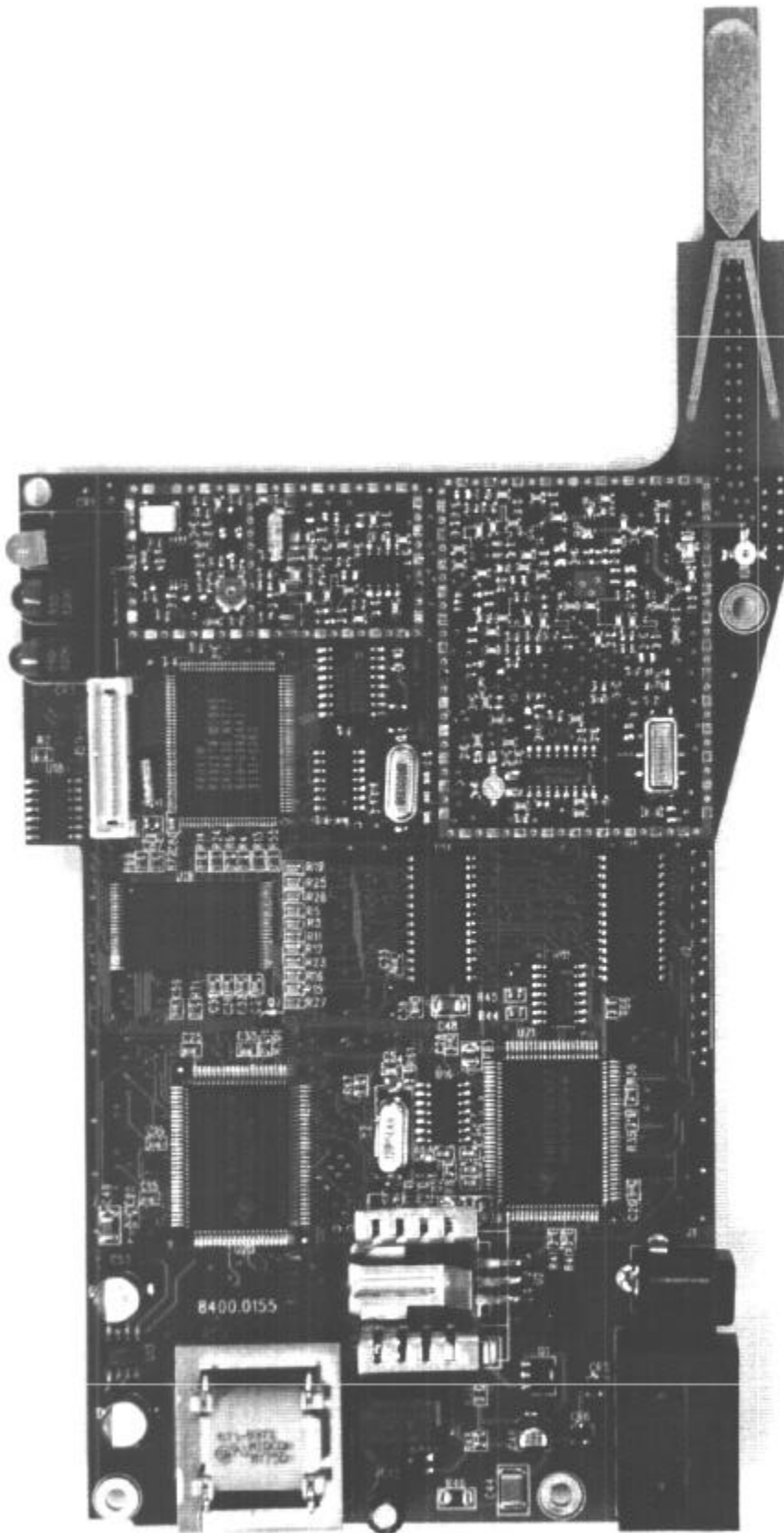
00:20:F6:34:0E:73

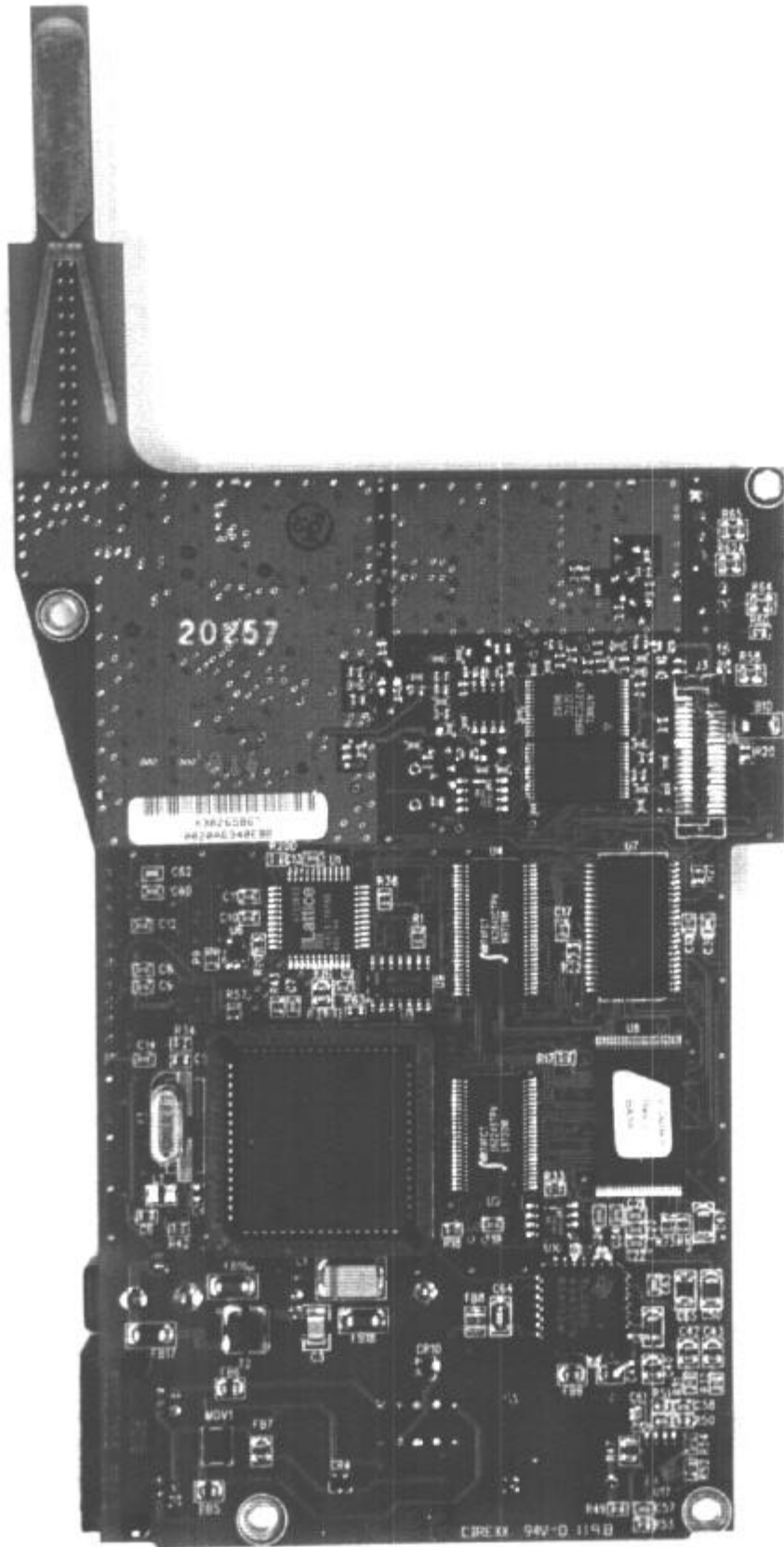


4500-81500021











Handwritten text at the top of the page, possibly a title or header, which is mostly illegible due to blurring and low contrast.

