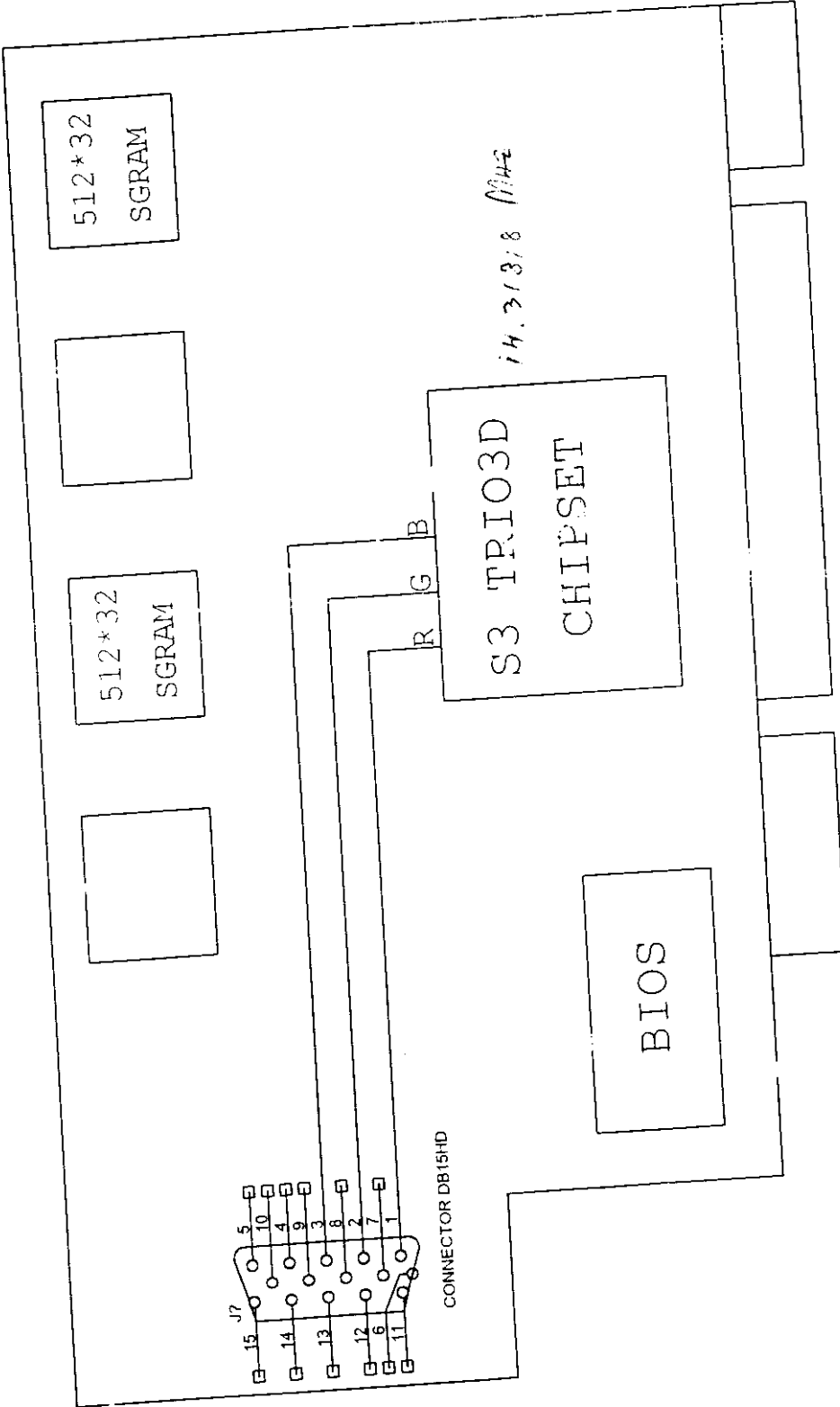


Appendix A

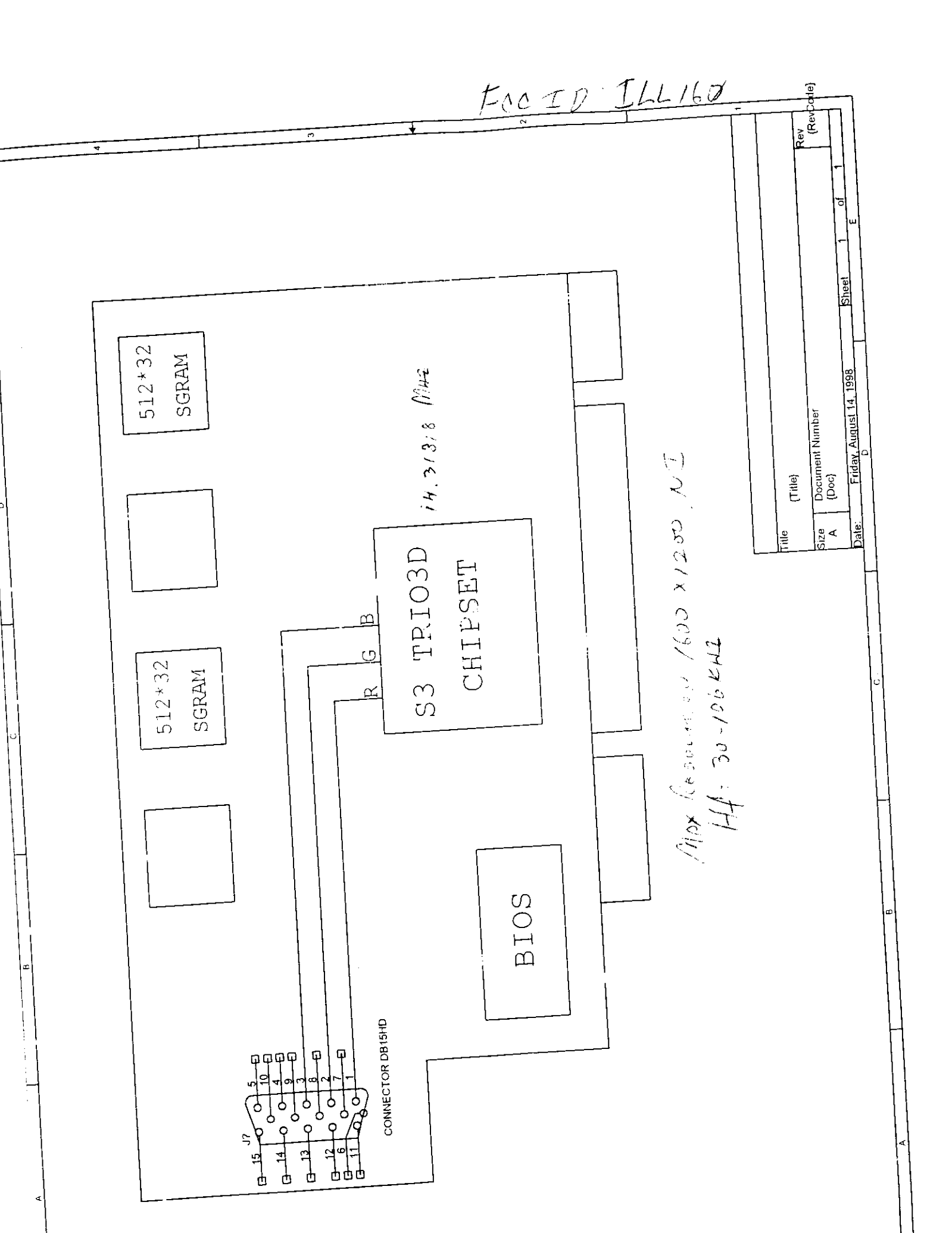
Circuit (Block) Diagram

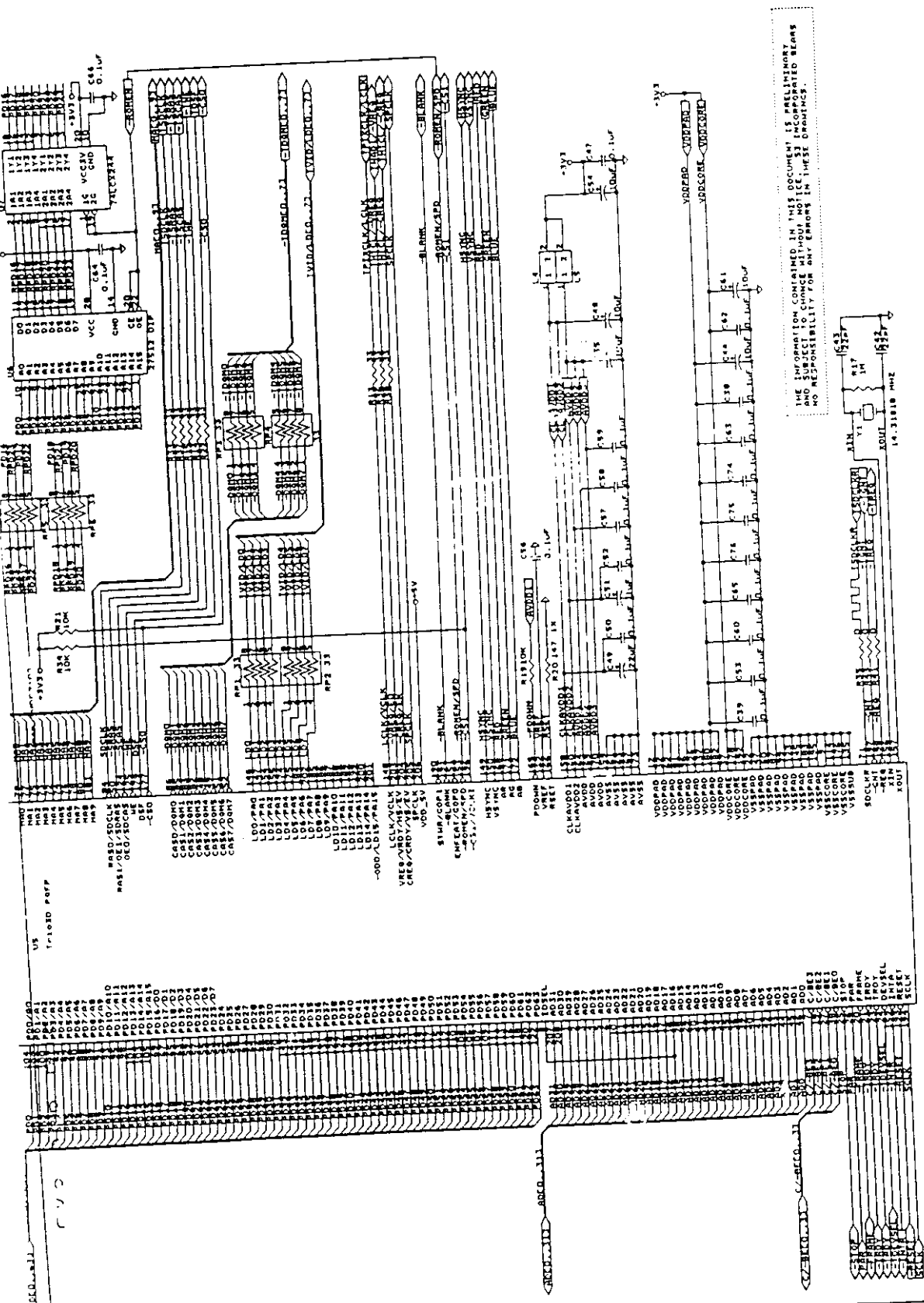
FCC ID ILL160



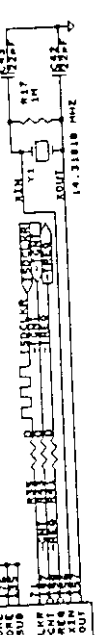
*Max Resolution 1600 x 1200, 60 Hz
 HF: 30-106 kHz*

Title (Title)		Rev (Rev/Date)	
Size A	Document Number	Sheet 1	of 1
Date: Friday, August 14, 1998		E	

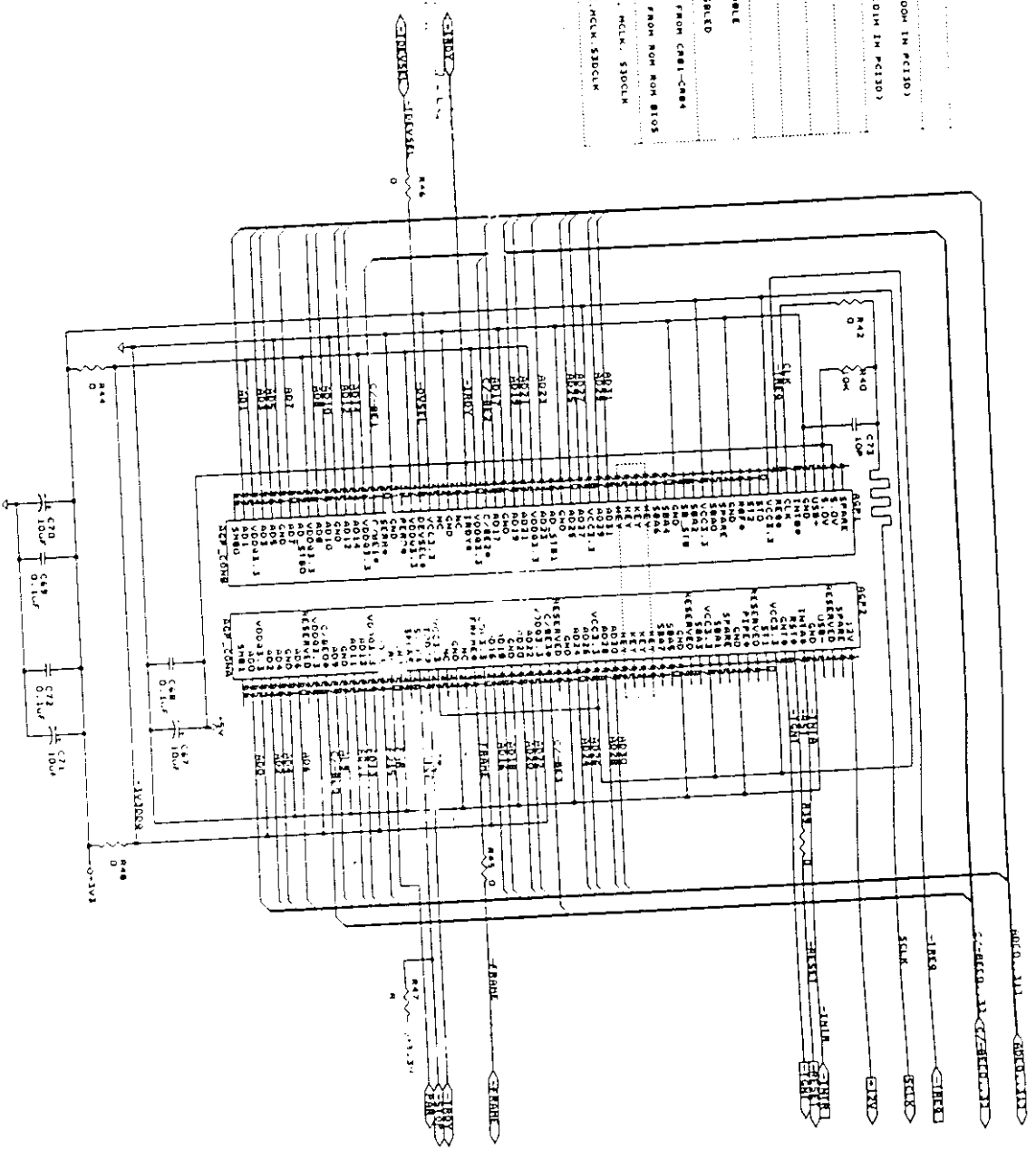




THE INFORMATION CONTAINED IN THIS DOCUMENT IS PRELIMINARY
AND IS SUBJECT TO CHANGE WITHOUT NOTICE. THE DRAWINGS
SHOWN ARE FOR INFORMATION ONLY AND ARE NOT TO BE USED FOR
CONSTRUCTION OF THE PRODUCT.



REGISTRATION	OPTION	FUNCTION
A29	IN	DISABLE INTX CLAIM (OEM IN PC130)
A29	OUT	ENABLE INTX CLAIM (OEM IN PC130)
A28	IN	SCAN MEMORY TYPE
A23	IN	234K*32 SCANM
A24	IN	4MB 512K*32 SCANM
A25	IN	2MB 256K*32 SCANM
A26	IN	HARD TEST TEST1 ENABLE
A26	OUT	HARD TEST TEST1 DISABLE
A27	IN	READ SUPERVISOR ID FROM ROM NON BIOS
A27	OUT	READ SUPERVISOR ID FROM ROM NON BIOS
A27	IN	USE EXTENHW. OCLK. MCLK. S30CLK
A27	OUT	USE INTERNAL. OCLK. MCLK. S30CLK



A001 CPU
 A002 234K*32 SCANM
 A003 4MB 512K*32 SCANM
 A004 2MB 256K*32 SCANM
 A005 HARD TEST TEST1 ENABLE
 A006 HARD TEST TEST1 DISABLE
 A007 READ SUPERVISOR ID FROM ROM NON BIOS
 A008 READ SUPERVISOR ID FROM ROM NON BIOS
 A009 USE EXTENHW. OCLK. MCLK. S30CLK
 A010 USE INTERNAL. OCLK. MCLK. S30CLK

