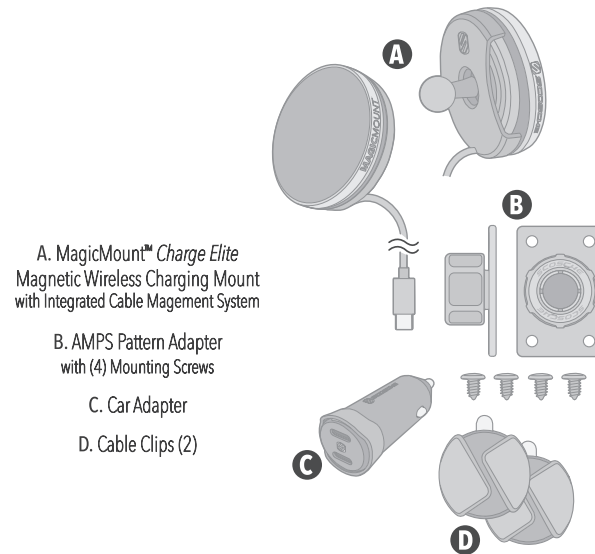


SCOSCHE
MAGICMOUNT™ CHARGE ELITE

INCLUDED ELEMENTS



DEVICE SETUP

SECTION **A** - Universal AMPS Pattern Adapter

SECTION **B** - Integrated Cable Management System

SECTION **C** - Connection & Charging

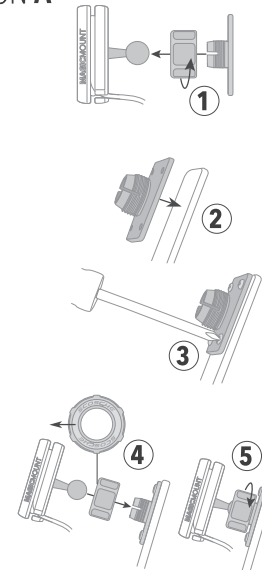
SECTION **D** - Charging Head Adjustment

SECTION A

Universal AMPS Pattern Adapter Installation

Note: The Universal AMPS Pattern Adapter should be installed disassembled from the MagicMount Charge Elite.

1. Remove the ball collar from adapter plate and remove the MagicMount.
2. Position the adapter plate on the AMPS Mounting Location.
3. Use a Phillips Head screwdriver to attach the adapter plate with (4) self-driving screws, included.
4. Replace the MagicMount. Place the ball connector through the collar into the ball socket. **Note:** Make sure the "Scosche" side of the collar is facing outward (toward the MagicMount).
5. Tighten the collar onto the ball socket.



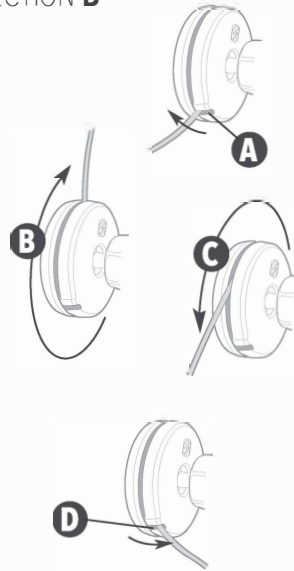
SECTION B

Integrated Cable Management System

1. Release the cable from the output slot (A)
2. Manually unwind the cable from the internal storage reel (B), or wind the cable onto the storage reel (C) to adjust the length of exposed cable.

Minimum Length: 1 ft
Maximum Length: 4 ft

3. At the desired length, replace the cable in the output slot (D)



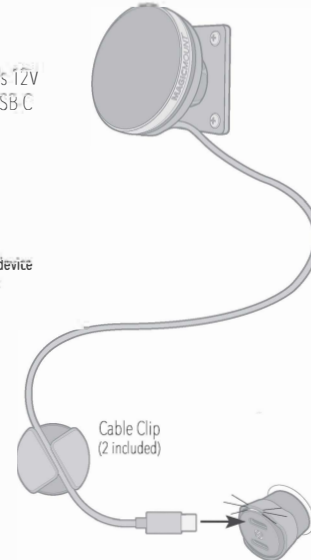
SECTION C

Plug included car adapter into vehicle's 12V socket, and route wireless charger's USB-C power cable to car adapter.

Qi2 Wireless Charging Head*
Input (USB-C PD): 9V=== 2.22A
Output: 15W/10W/7.5W/5W

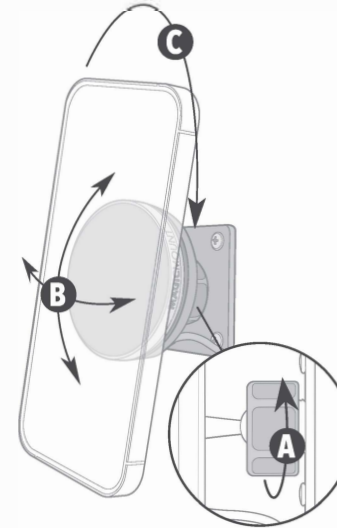
*Actual charge rates may vary depending on device software and environmental conditions.

Car Adapter
Input: 12-24V=== 7A
Output: 5V=== 3.0A / 9V=== 2.22A



SECTION D

Loosen balljoint collar (A) to adjust charging head angle (B) or rotate device 360° (C).



Scosche Industries
1550 Pacific Avenue
Oxnard, California 93033
Phone 800-363-4490 x1 / 805-486-4450 x1

www.scosche.com

©2024 Scosche Industries

Scosche & MagicMount are trademarks of Scosche Industries.
Other marks or brands are the property of their respective owners.
Devices and/or appearance may vary.

Designed in Oxnard, California

SI MEQMRAMPS 7/24