

Wireless Hands-free Car Kit

Thanks for purchasing our product! Please read this operating manual carefully before using in order to get the best playing effect.

I. Product Introduction

The Product is a bluetooth hands-free car charger and MP3 player, professional-grade bluetooth chip with high performance is applied, MP3 music in your mobile phone can be transmitted by wireless to car stereo through bluetooth connection, hand-free calling is also supported. No need to convert your car, easily enjoy music and make hands-free calls during driving, safe and delightful.

II. Product Diagram

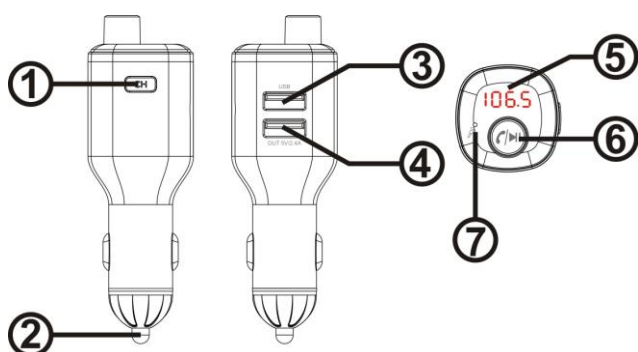


Diagram Introduction

- 1: CH short press to enter FM model
- 2: Positive power contact
- 3: USB port output:5V/1A
- 4: USB port output:5V/2.4A
- 5: Display window
- 6:Knob for Play/Pause/Answer/Hang up/Previous song/Next song
Long press for SIRI activation
- 7:MIC

III: Features

- 1:Universal for all type of vehicle.
- 2:Led Display.
- 3:Dual USB charging ports max output:5V/3.4A
- 4:Support iPhone and iPad charging
- 5:Support FM
- 6:Support MP3 format music play.
- 7:Auto power-off memory function
- 8: Cigar lighter for power on
- 9: Bluetooth V4.2
- 10: Bluetooth Hands-free
- 11: Bluetooth stereo music play with DSP technology
- 12: Support Siri

IV. Operation

4.1.1 Plug the product into car cigarette lighter socket while it will be automatically power on with LED flashing and displaying BT→FM。

4.1.2 Tune the car FM radio to the same channel as the product, then you can enjoy the music from car speaker.

4.1.3 FM adjustment:

Short press "CH" key to channel setting, at this time, the channel is flashing on LED display, then short turn the knob "Ⓜ" to switch the channel from 88.1MHz to 107.9MHz.

4.1.4 Wake up Siri:

Long press "Ⓜ" 3s to wake up Siri。

4.3 Bluetooth Pairing

When connecting the product with the mobile phone at the first time, it may need pin code to finish the connection, for more details, please refer to the relevant manual.

1.Please open Bluetooth on your mobile phone and search for the device "SCOSCHE BTFM" from phone menu list

2.Select "SCOSCHE BTFM" and "connect/pair"

4.4 Hands-free calling from phone or car speaker

Under the calling through this device, switch the button CH to left or to right, it will shift the mode of Hands-free calling from phone to car stereo speaker.

4.4.1 Making a Call

Dial the phone number and press the call key on your phone, while connected to the transmitter and the call sound will be heard through your car speakers.

4.4.2 Answering a Call

If there is an incoming call while connected to the transmitter, short press the key "Ⓜ" to answer or hang up the call, short rotate the key to switch between the mobile phone microphone and the product microphone.

4.4.3 Rejecting a Call

For calls you do not wish to answer, you may long press the key "Ⓜ" to reject.


4.4.4 Redialing a Call

When Bluetooth is connected, double click the key "Ⓜ" to redial the latest phone number.

4.5 Phone Music Play

You can play and enjoy the phone music via FM transmission from the car audio system. Short press the key to play/pause, turn left/right to previous /next

song.

4.5.1 According to the smart phone manual, set the music playing under Bluetooth stereo output mode, then the music can be transmitted to car stereo via FM transmission, rotate the key  to select previous or next song.

V. Tech specifications:

Rated Working voltage	12V-24V
Limited Working voltage	10~26V
Working temperature	-10-50°C
Playback format	MP3
USB output	Total output 3.4A/5V (both USB) maximum
Frequency Response	20Hz-15Khz
Bluetooth Version	Version 4.2
Bluetooth Sound Processing	DSP technology and A2DP(Advance Audio Distribution Profile)function
Bluetooth transmission distance	<10M
Effective Distance of Bluetooth microphone	0.5-2M
FM Frequency	88.1~107.9Mhz

VI. Packaging

1. User Manual 2. Main device

This device contains licence-exempt transmitter(s)/receiver(s) that comply with Innovation, Science and Economic Development Canada’s licence-exempt RSS(s). Operation is subject to the following two conditions:

1. This device may not cause interference.
2. This device must accept any interference, including interference that may cause undesired operation of the device.

L’émetteur/récepteur exempt de licence contenu dans le présent appareil est conforme aux CNR d’Innovation, Sciences et Développement économique Canada applicables aux appareils radio exempts de licence. L’exploitation est autorisée aux deux conditions suivantes :

1. L’appareil ne doit pas produire de brouillage;
2. L’appareil doit accepter tout brouillage radioélectrique subi, même si le brouillage est susceptible d’en compromettre le fonctionnement.

NOTE: This equipment has been tested and found to comply with the limits for a Class B digital device, pursuant to part 15 of the FCC Rules. These limits are designed to provide reasonable protection against harmful interference in a residential installation. This equipment generates uses and can radiate radio frequency energy and, if not installed and used in accordance with the instructions, may cause harmful interference to radio communications. However, there is no guarantee that interference will not occur in a particular installation. If this equipment does cause harmful interference to radio or television reception, which can be determined by turning the equipment off and on, the user is encouraged to try to correct the interference by one or more of the following measures:

- Reorient or relocate the receiving antenna.
- Increase the separation between the equipment and receiver.
- Connect the equipment into an outlet on a circuit different from that to which the receiver is connected.
- Consult the dealer or an experienced radio/TV technician for help

Changes or modifications not expressly approved by the party responsible for compliance could void the user's authority to operate the equipment.

This device complies with Part 15 of the FCC Rules. Operation is subject to the following two conditions:
 (1) this device may not cause harmful interference, and
 (2) this device must accept any interference received, including interference that may cause undesired operation.