



**SC300 1X MICROCELL @ 1.9 GHZ  
CDMA BTS CDMA BTS FRAME**

**INTERNAL PHOTOS EXHIBIT**

**List of Internal Photographs**

<u>Number</u>	<u>Photograph</u>
1.	DC/DC Converter - Front View
2.	DC/DC Converter - Rear View
3.	RFCC Board - Front View
4.	RFCC Board - Rear View
5.	32 Channel CEM - Front View
6.	32 Channel CEM - Rear View
7.	ILPA - Front View
8.	ILPA - Rear View
9.	I/O Interface - Front View
10.	I/O Interface - Rear View
11.	Up/Down Converter - Front View
12.	Up/Down Converter - Rear View



Global Telecom Solutions Sector

APPLICANT: MOTOROLA  
FCC ID: IHET6CB1

DC/DC Converter - Front View



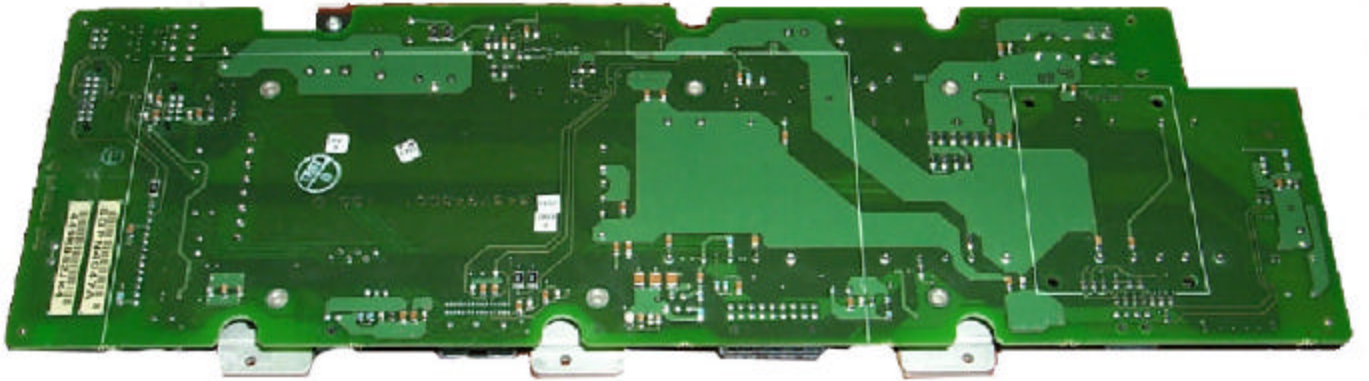


Global Telecom Solutions Sector

---

**APPLICANT:** MOTOROLA  
**FCC ID:** IHET6CB1

DC/DC Converter - Rear View

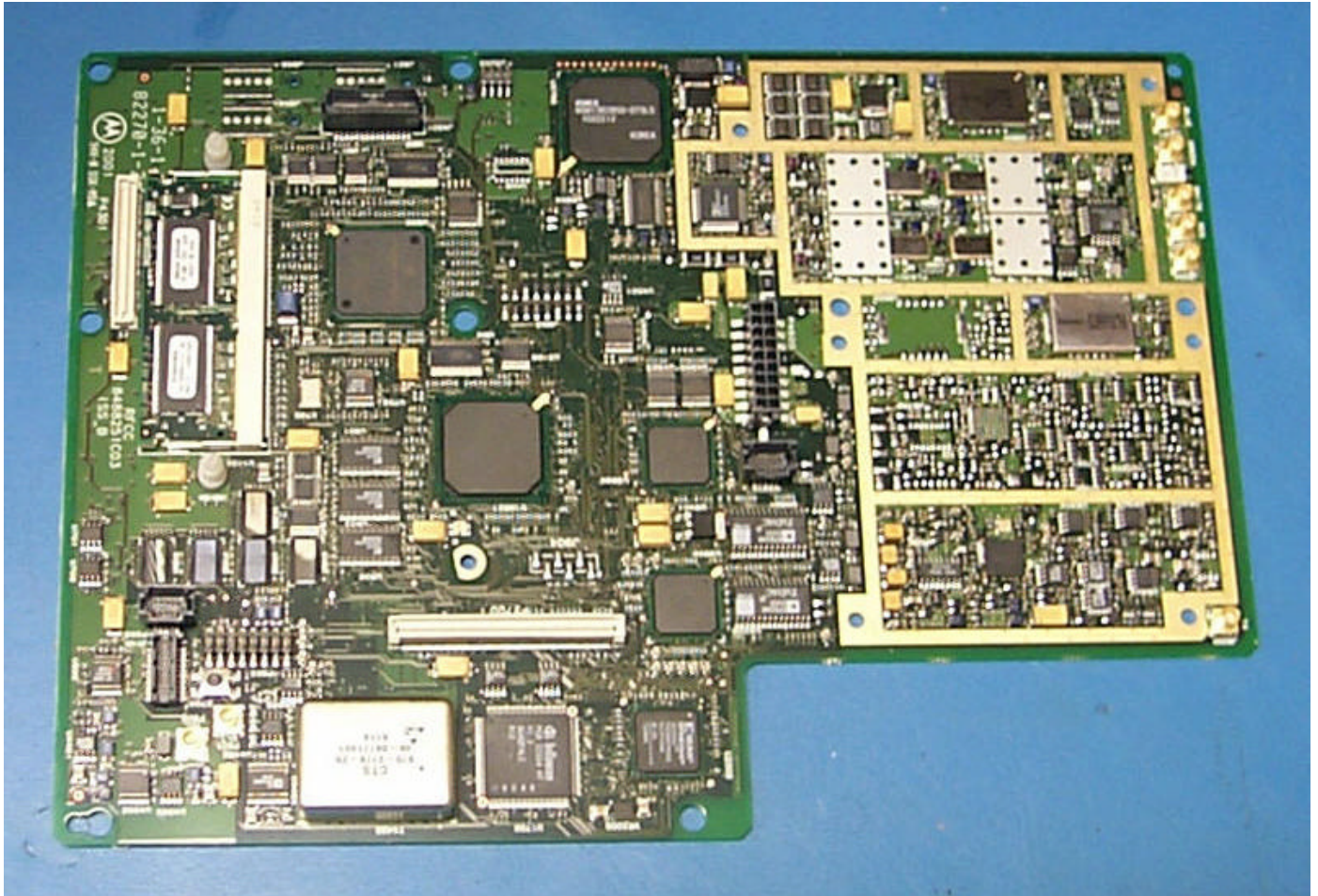




Global Telecom Solutions Sector

APPLICANT: MOTOROLA  
FCC ID: IHET6CB1

RFCC Board - Front View



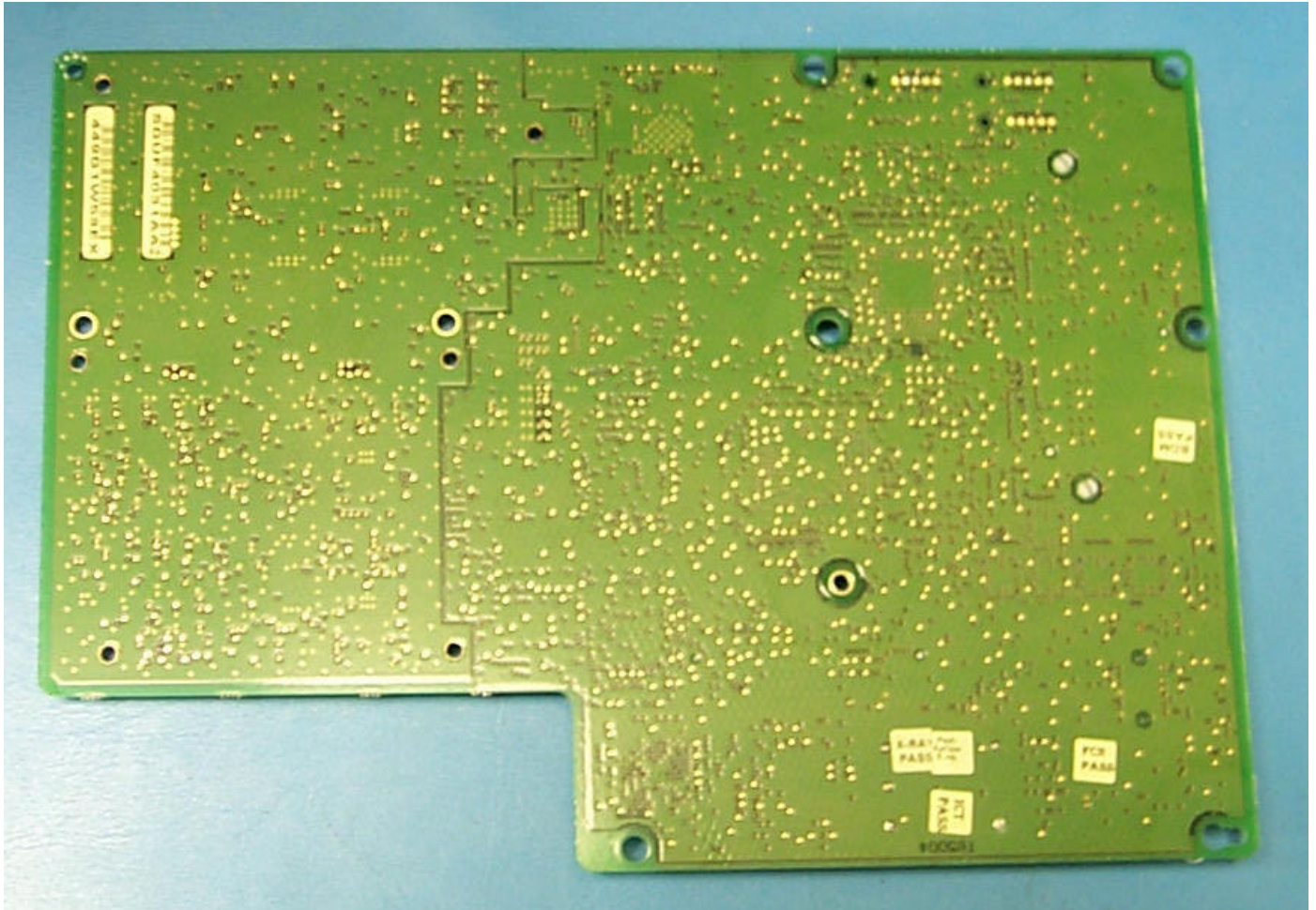




Global Telecom Solutions Sector

APPLICANT: MOTOROLA  
FCC ID: IHET6CB1

RFCC Board - Rear View

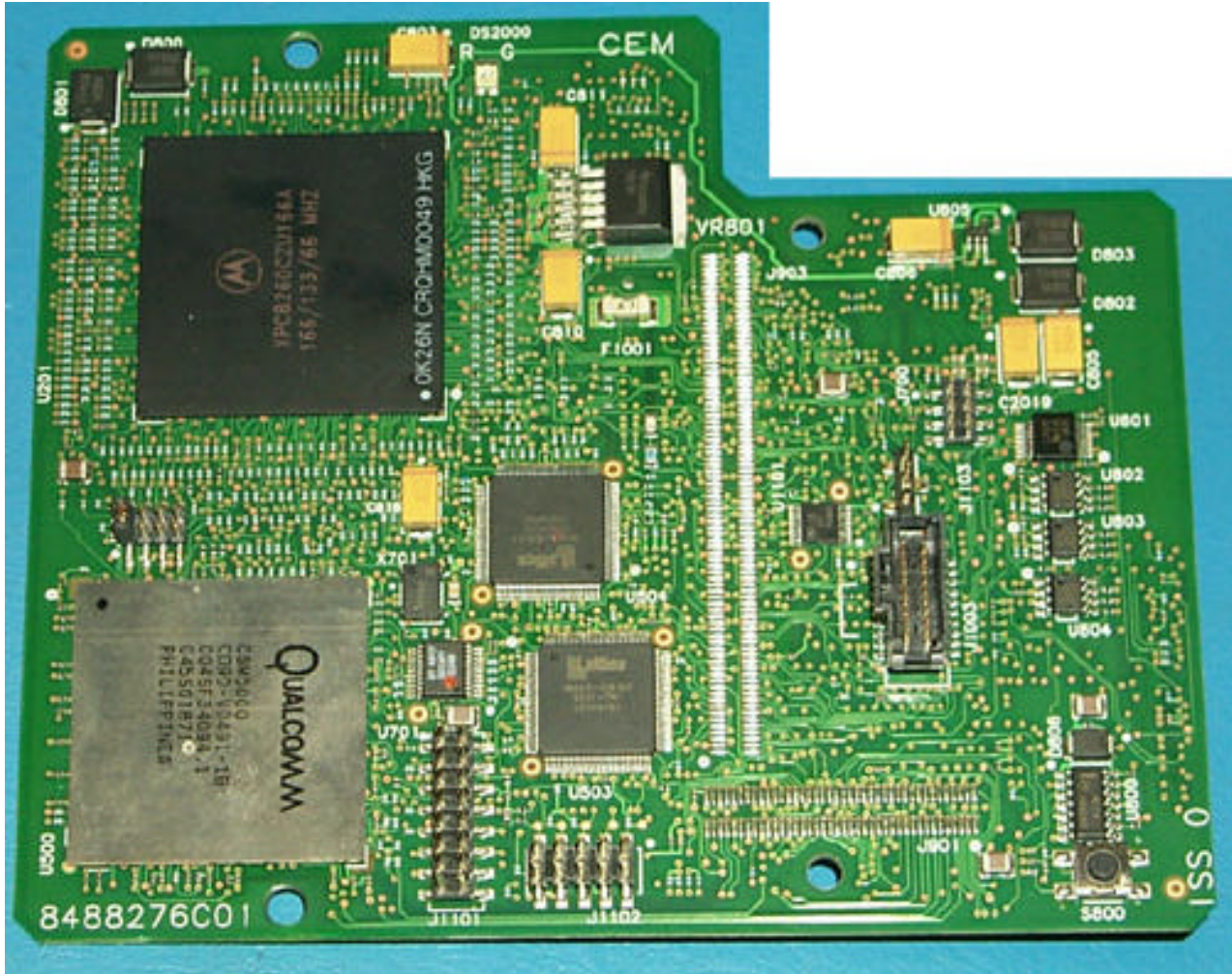


# M

Global Telecom Solutions Sector

APPLICANT: MOTOROLA  
FCC ID: IHET6CB1

## 32 Channel CEM - Front View



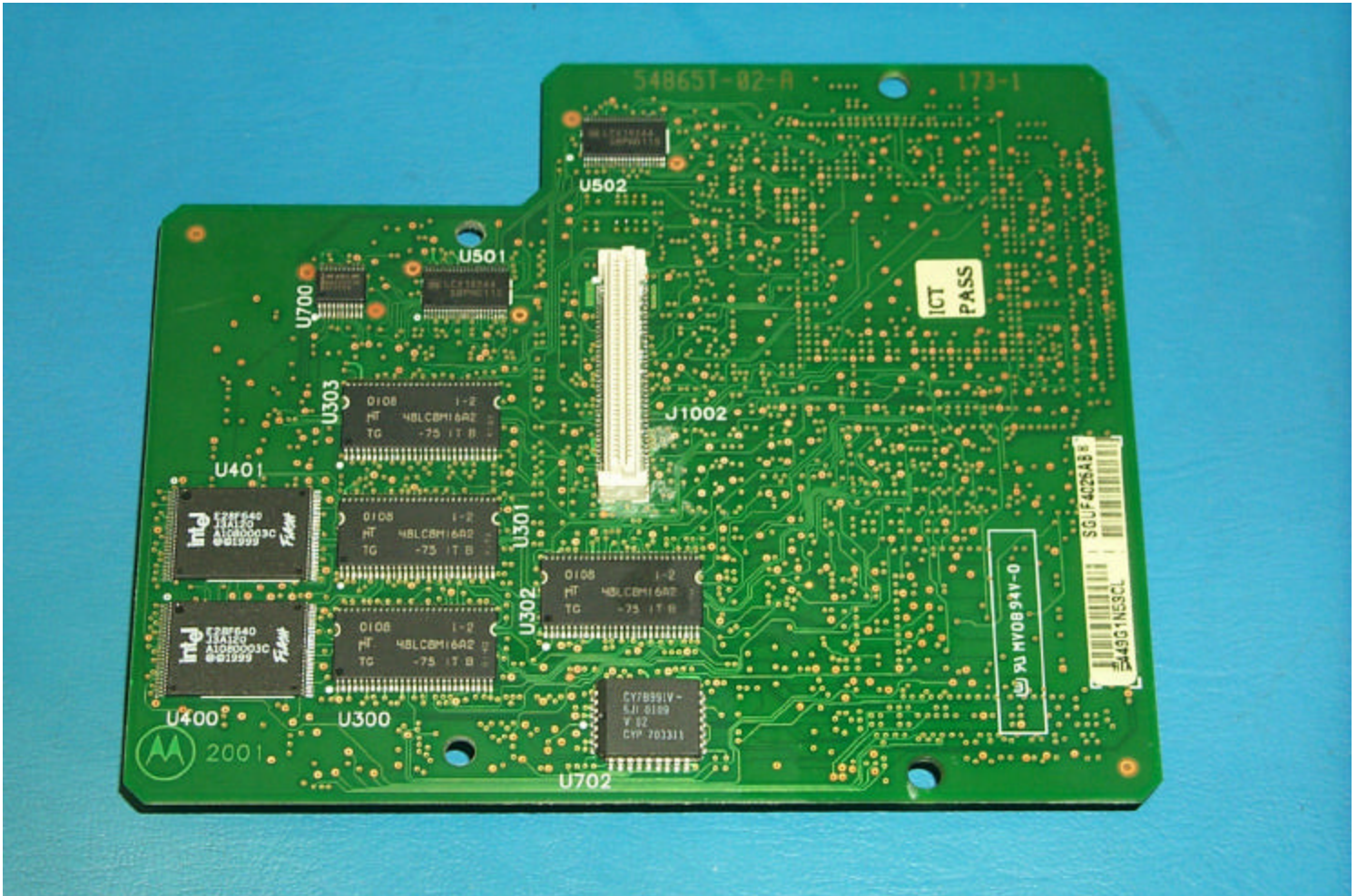




Global Telecom Solutions Sector

APPLICANT: MOTOROLA  
FCC ID: IHET6CB1

32 Channel CEM - Rear View



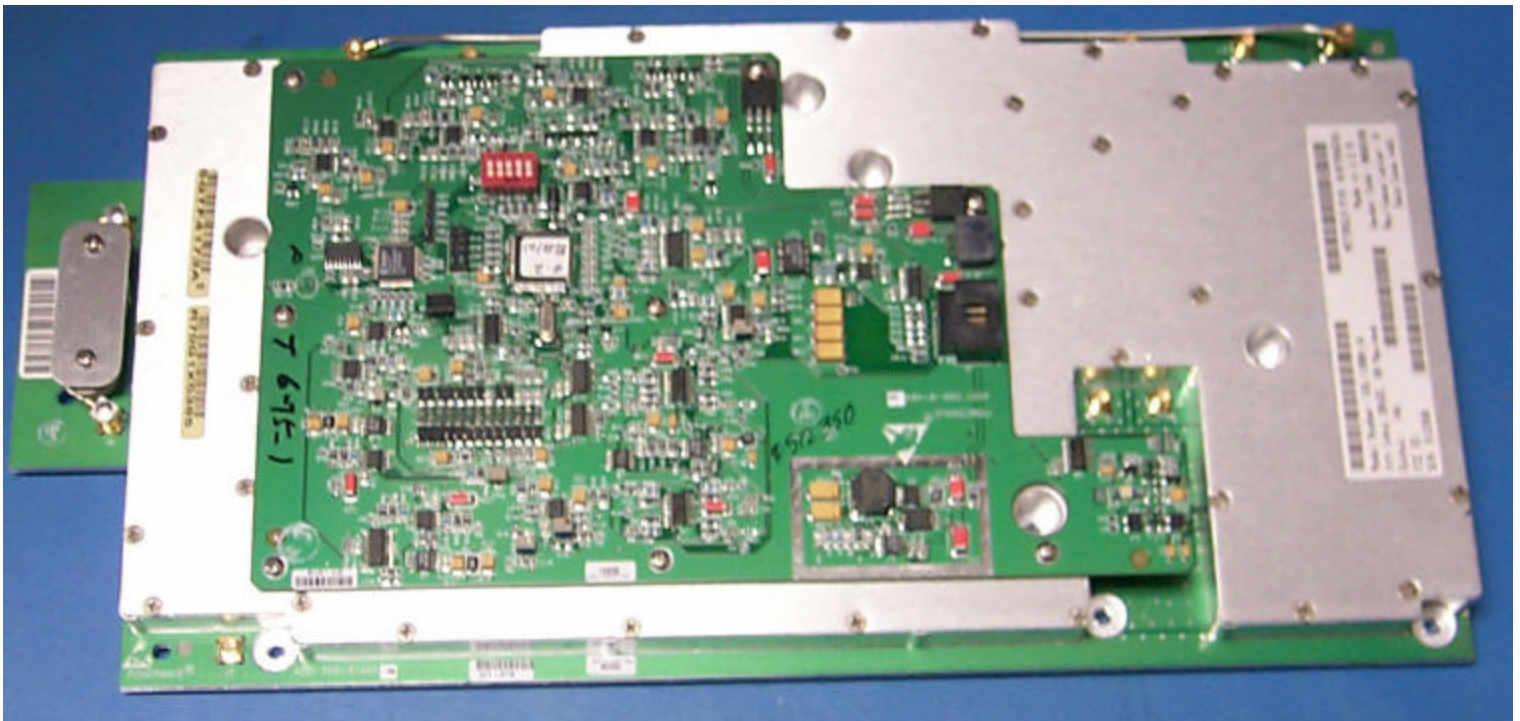
# M

Global Telecom Solutions Sector

---

APPLICANT: MOTOROLA  
FCC ID: IHET6CB1

## ILPA - Front View





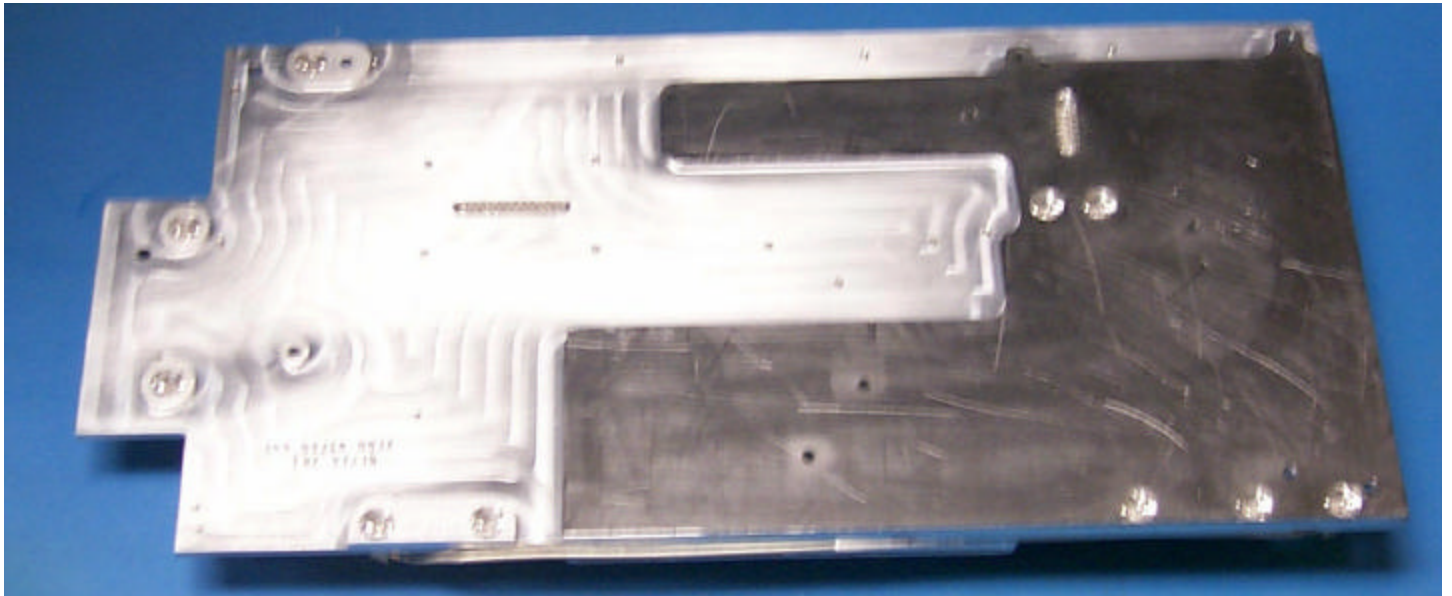


Global Telecom Solutions Sector

---

APPLICANT: MOTOROLA  
FCC ID: IHET6CB1

ILPA - Rear View

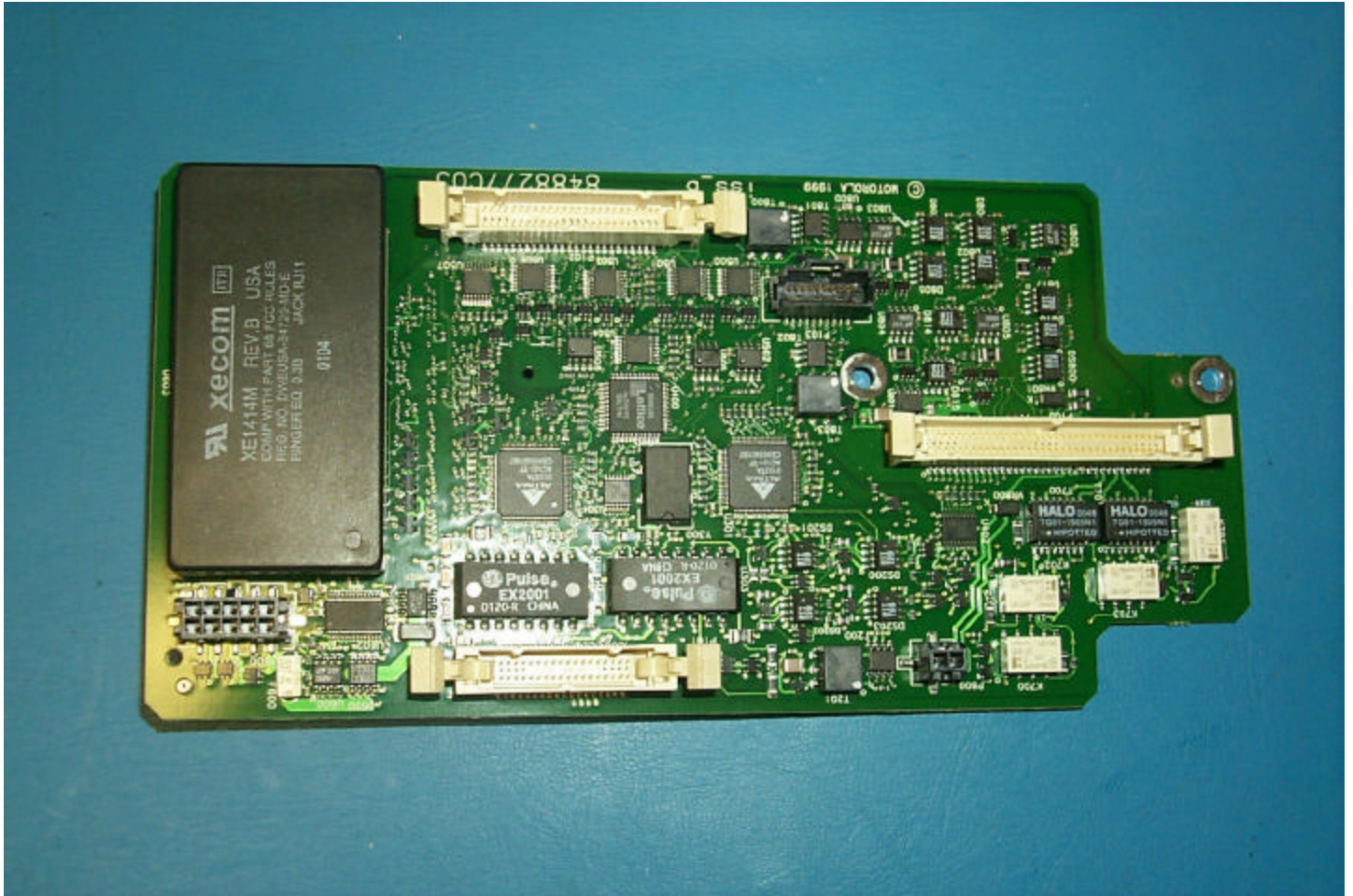




Global Telecom Solutions Sector

APPLICANT: MOTOROLA  
FCC ID: IHET6CB1

I/O Interface - Front View



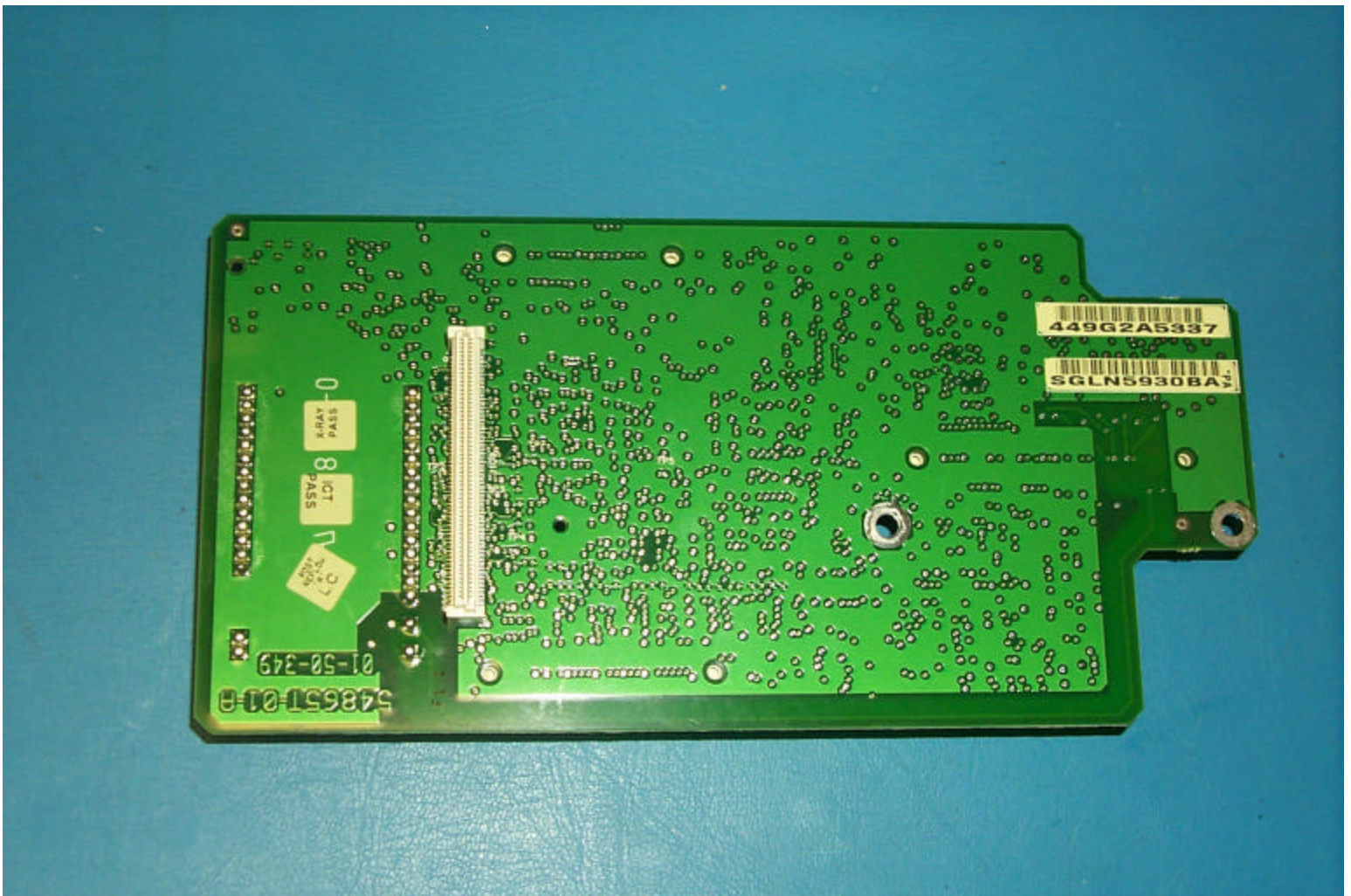




Global Telecom Solutions Sector

APPLICANT: MOTOROLA  
FCC ID: IHET6CB1

I/O Interface - Rear View



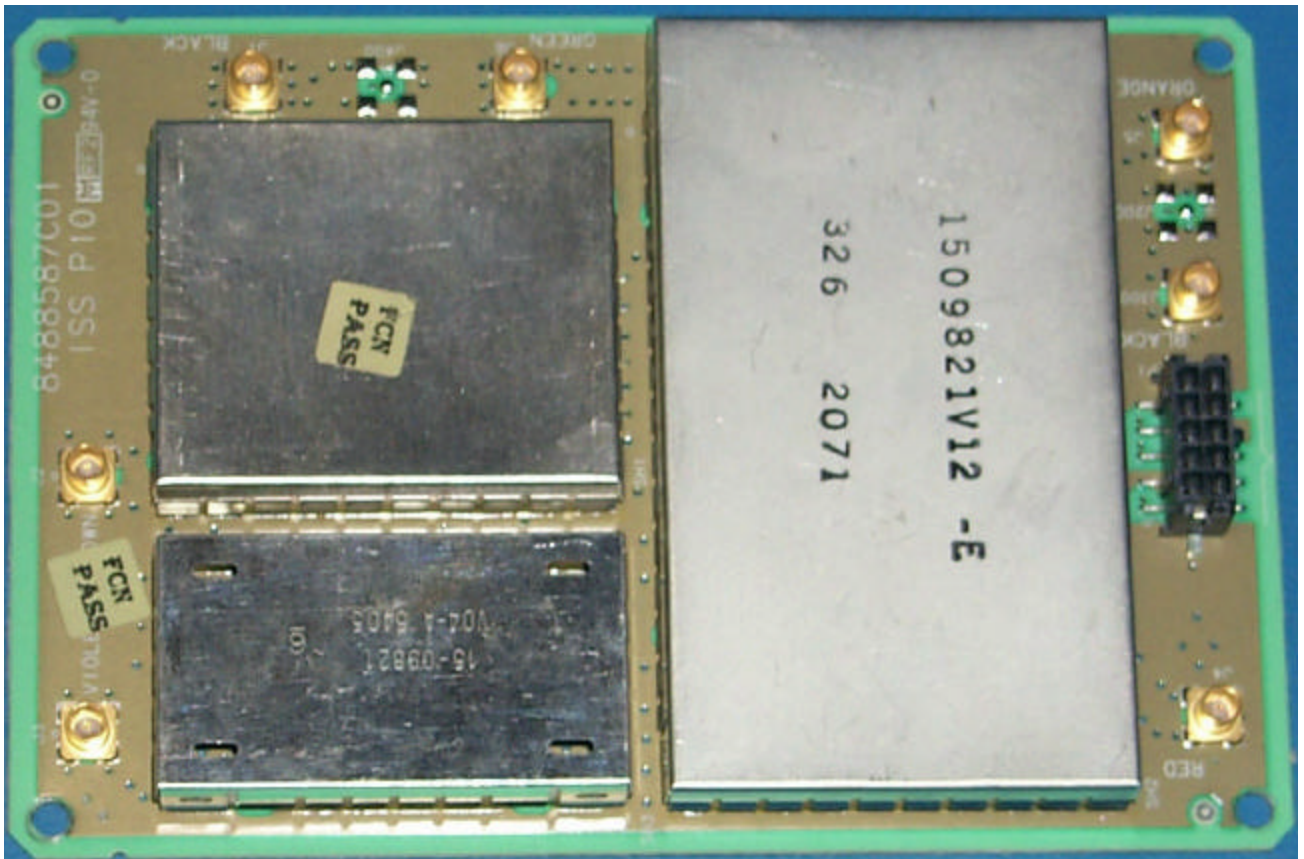




Global Telecom Solutions Sector

APPLICANT: MOTOROLA  
FCC ID: IHET6CB1

Up/Down Converter - Front View





Global Telecom Solutions Sector

APPLICANT: MOTOROLA  
FCC ID: IHET6CB1

Up/Down Converter - Rear View

