



MOTOROLA

Cellular Infrastructure Group

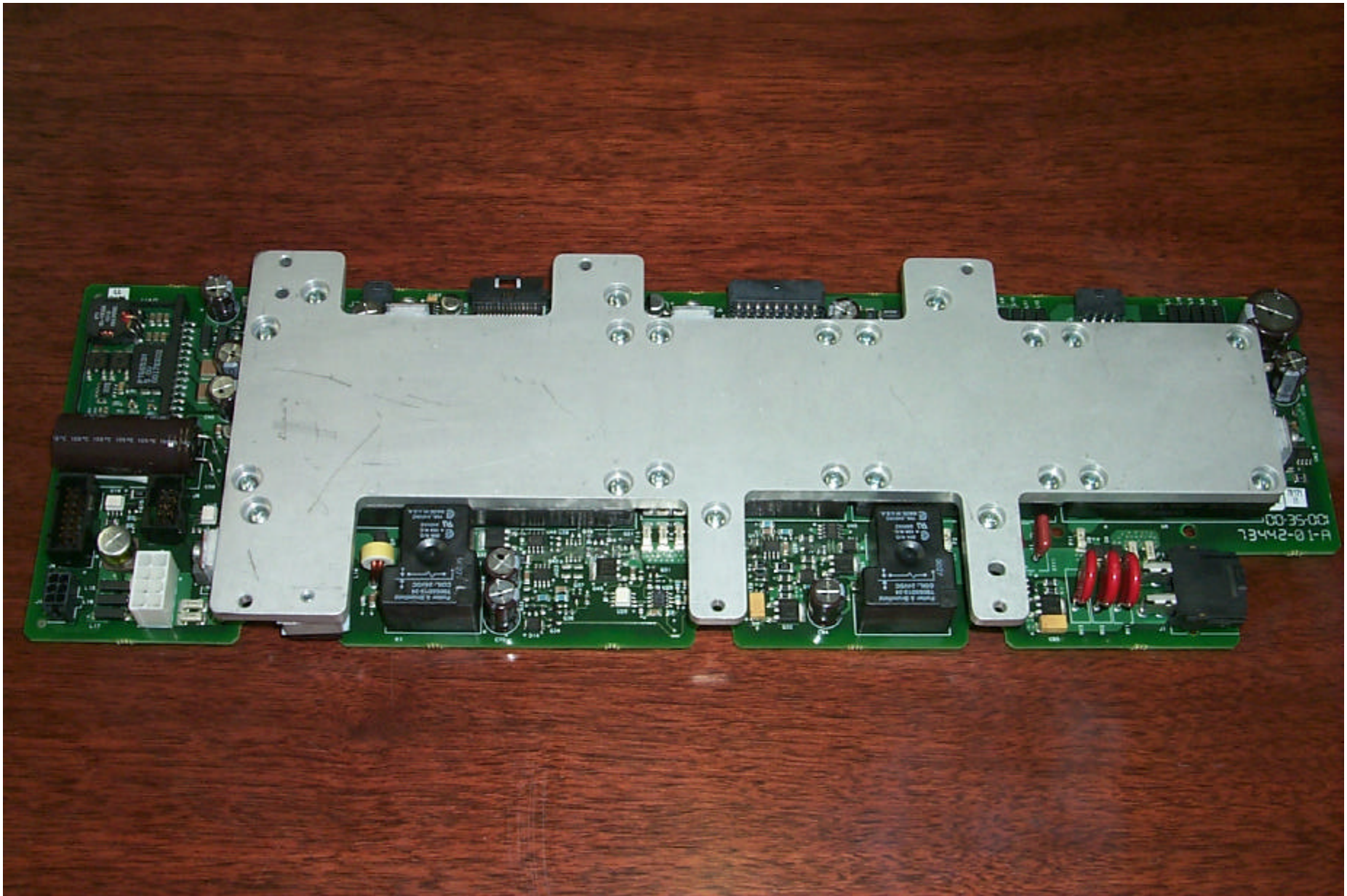
APPLICANT: MOTOROLA

TRANSCEIVER TYPE: IHET6AQ2

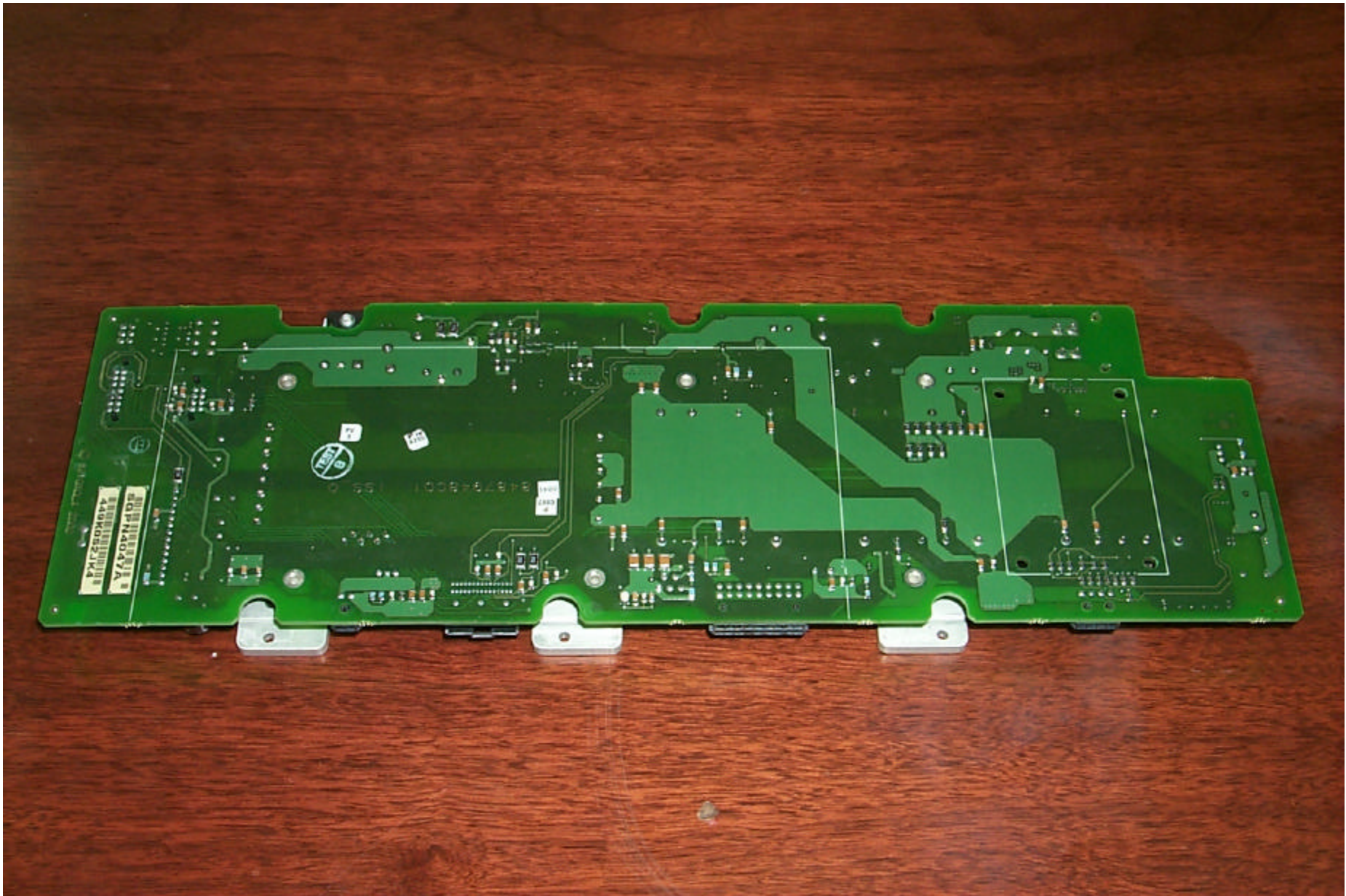
SC300 Microcell @ 1.9 GHz CDMA BTS

INTERNAL PHOTOS EXHIBIT

- | <u>No.</u> | <u>PHOTOGRAPH</u> |
|-------------------|--------------------------------|
| 1. | DC/DC Converter - Front View |
| 2. | DC/DC Converter - Rear View |
| 3. | RFCC Board - Front View |
| 4. | RFCC Board - Rear View |
| 5. | 16 Channel CEM- Front View |
| 6. | 16 Channel CEM - Rear View |
| 7. | ILPA - Front View |
| 8. | ILPA - Rear View |
| 9. | NIU - Front View |
| 10. | NIU - Rear View |
| 11. | Up/Down Converter - Front View |
| 12. | Up/Down Converter - Rear View |



IHET6A Q2
SC300 Microcell @ 1.9GHz
DC/DC Converter - Front View



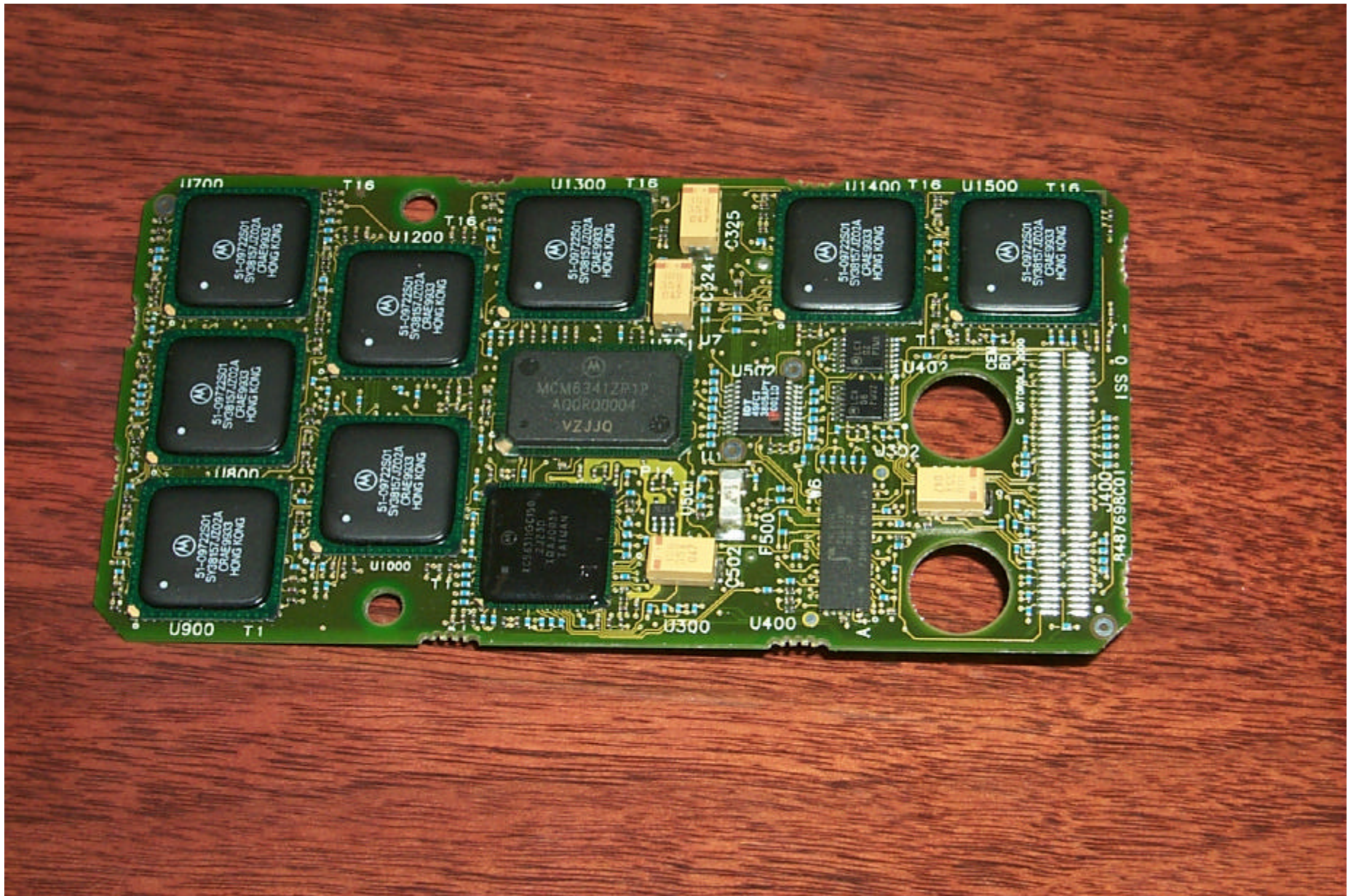
IHET6A Q2
SC300 Microcell @ 1.9 GHz
DC/DC Converter - Rear View



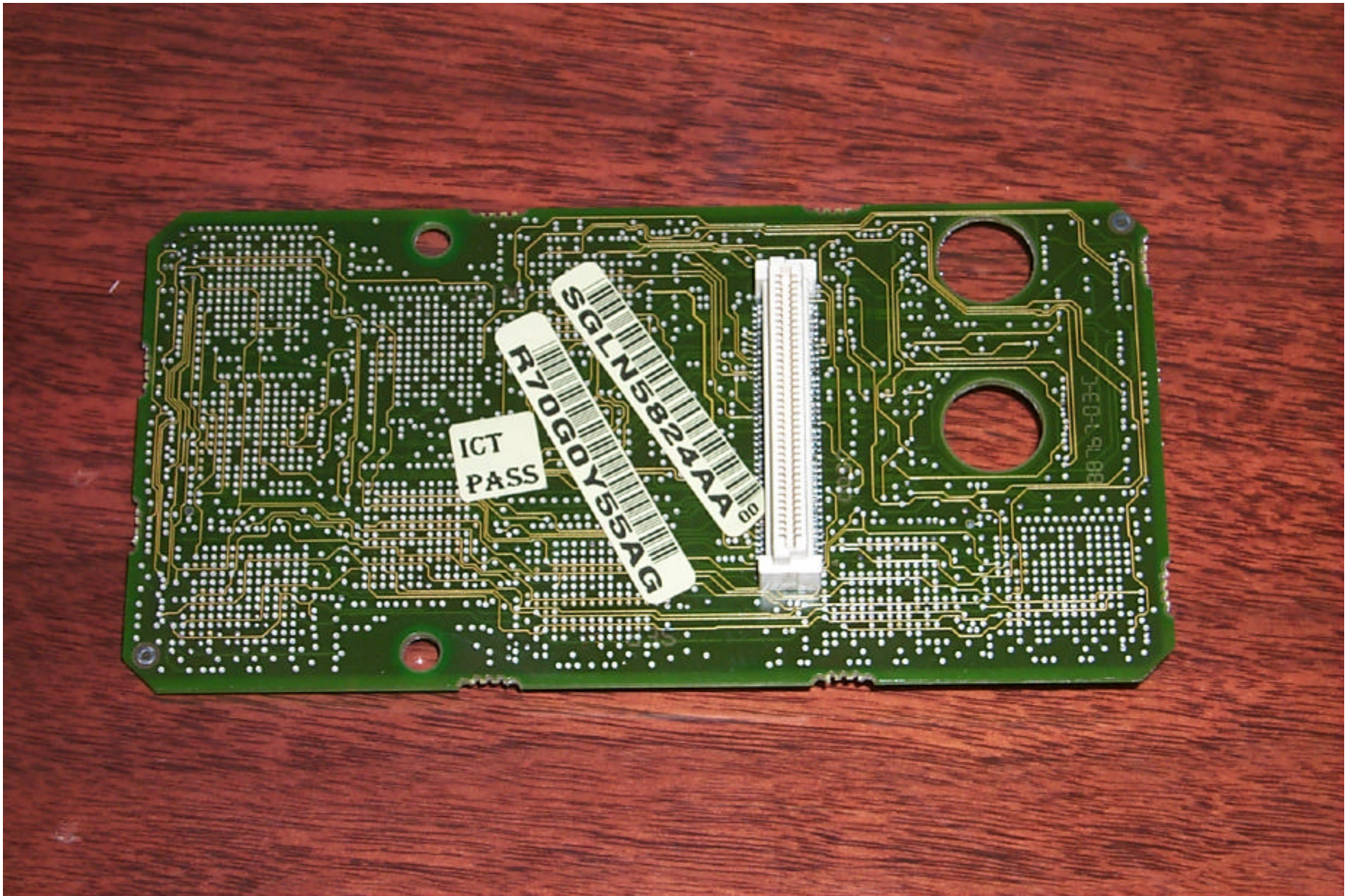
IHET6AQ2
SC300 Microcell @ 1.9 GHz
RFCC Board - Front View



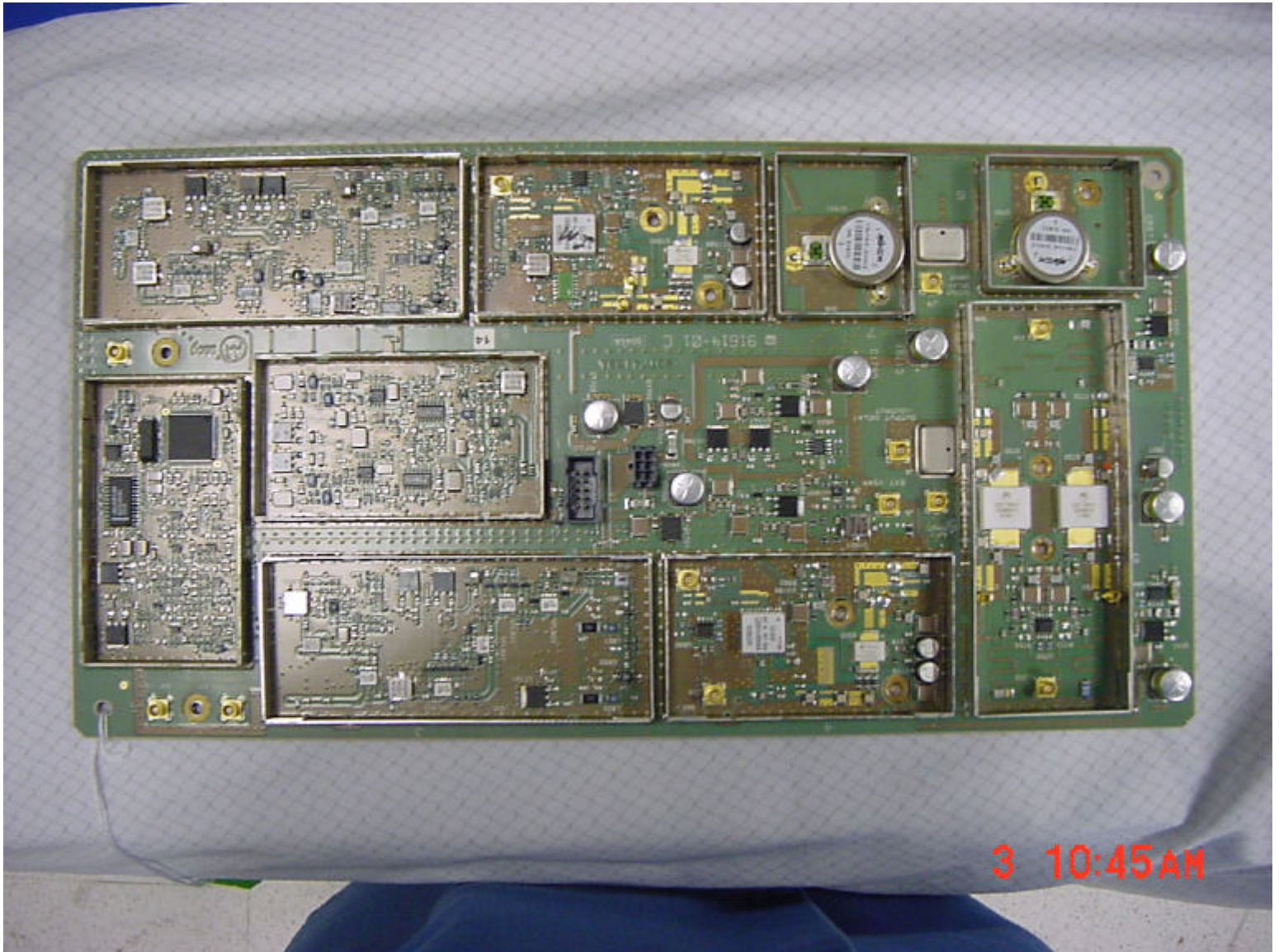
IHET6AQ2
SC300 Microcell @ 1.9GHz
RFCC Board - Rear View



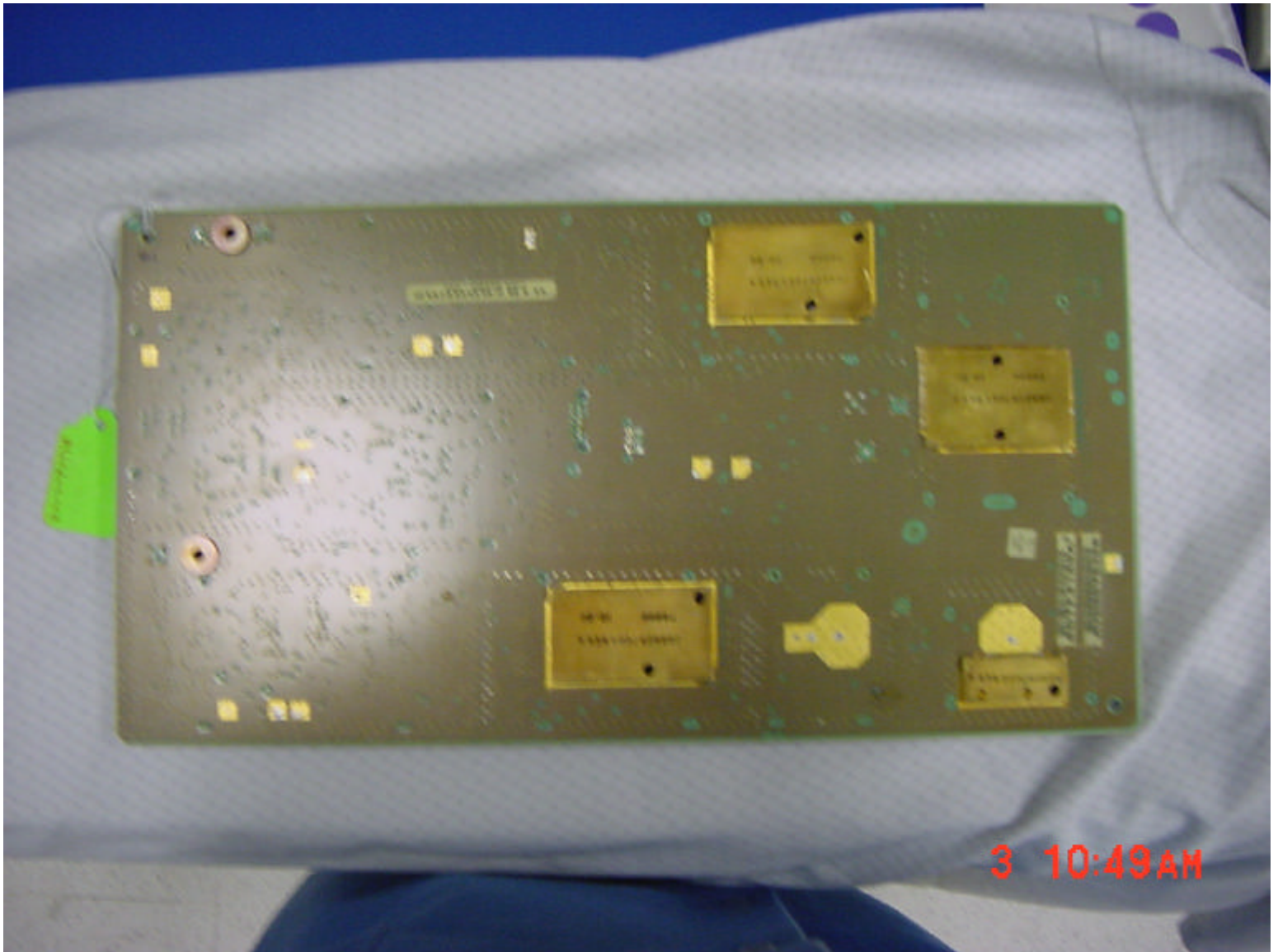
IHET6A2
SC300 Microcell @ 1.9 GHz
16 Channel CEM - Front View



IHET6AQ2
SC300 Microcell @ 1.9 GHz
16 Channel CEM - Rear View



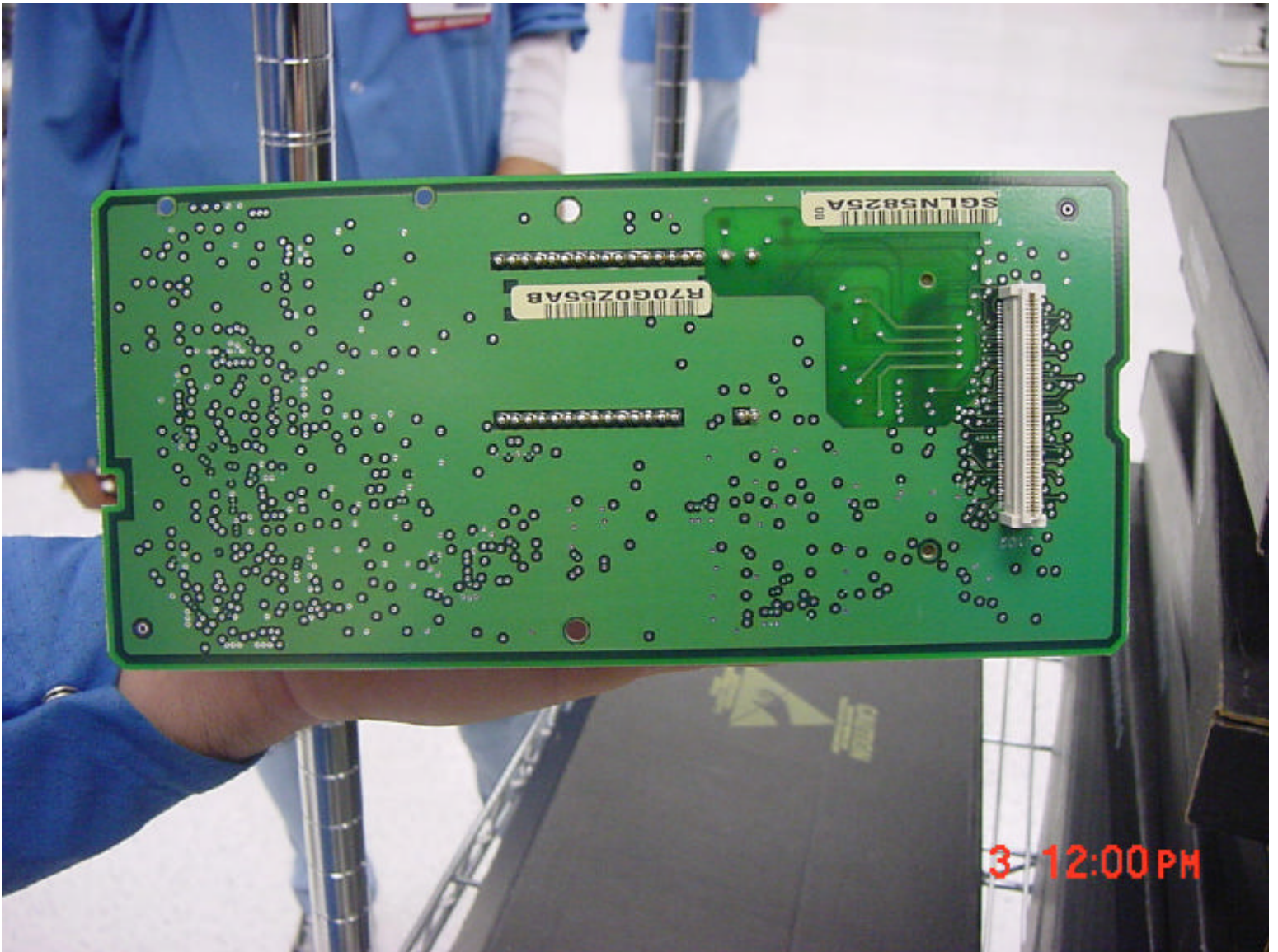
IHET6AQ2
SC300 Microcell @ 1.9 GHz
ILPA - Front View



IHET6AQ2
SC300 Microcell @ 1.9 GHz
ILPA - Rear View



IHET6AQ2
SC300 Microcell @ 1.9 GHz
NIU - Front View



IHET6AQ2
SC300 Microcell @ 1.9 GHz
NIU - Rear View



IHET6AQ2
SC300 Microcell @ 1.9GHz
Up/Down Converter - Front View



IHET6AQ2
SC300 Microcell @ 1.9GHz
Up/Down Converter - Rear View