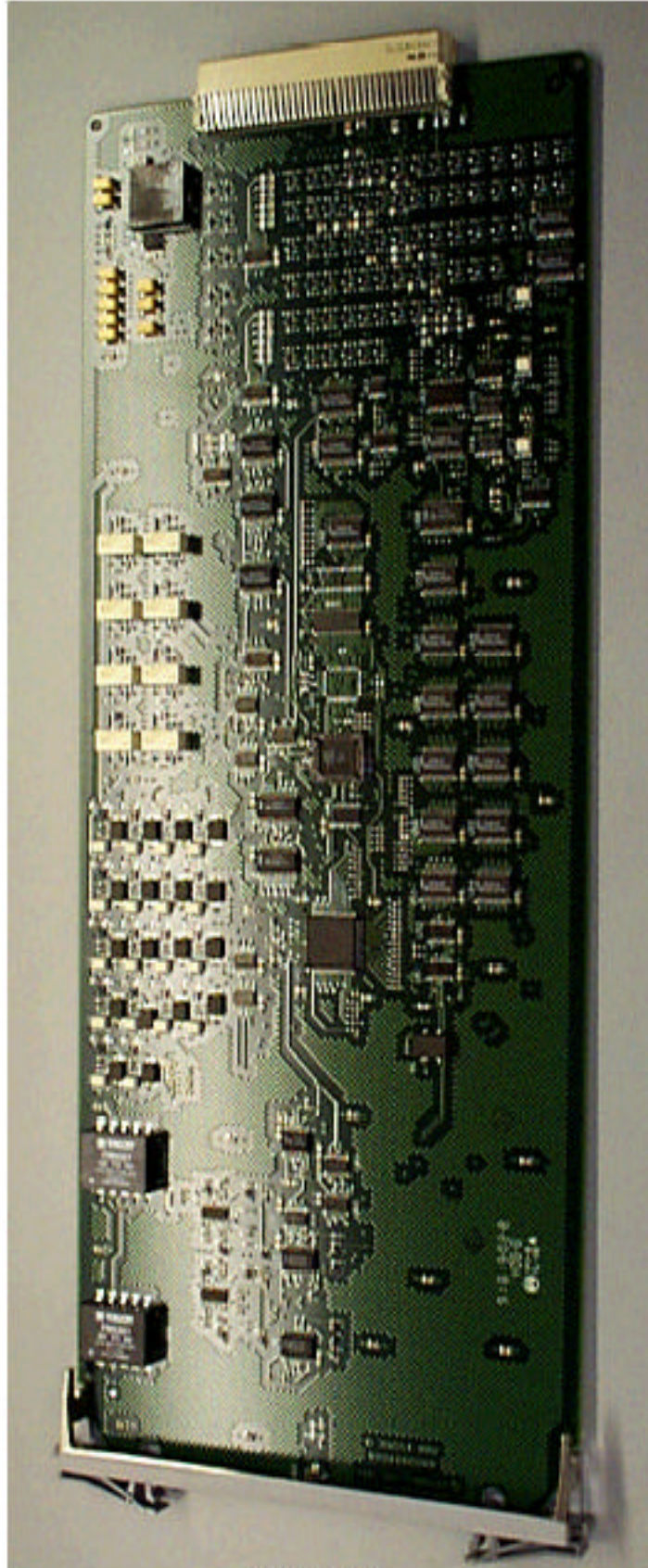
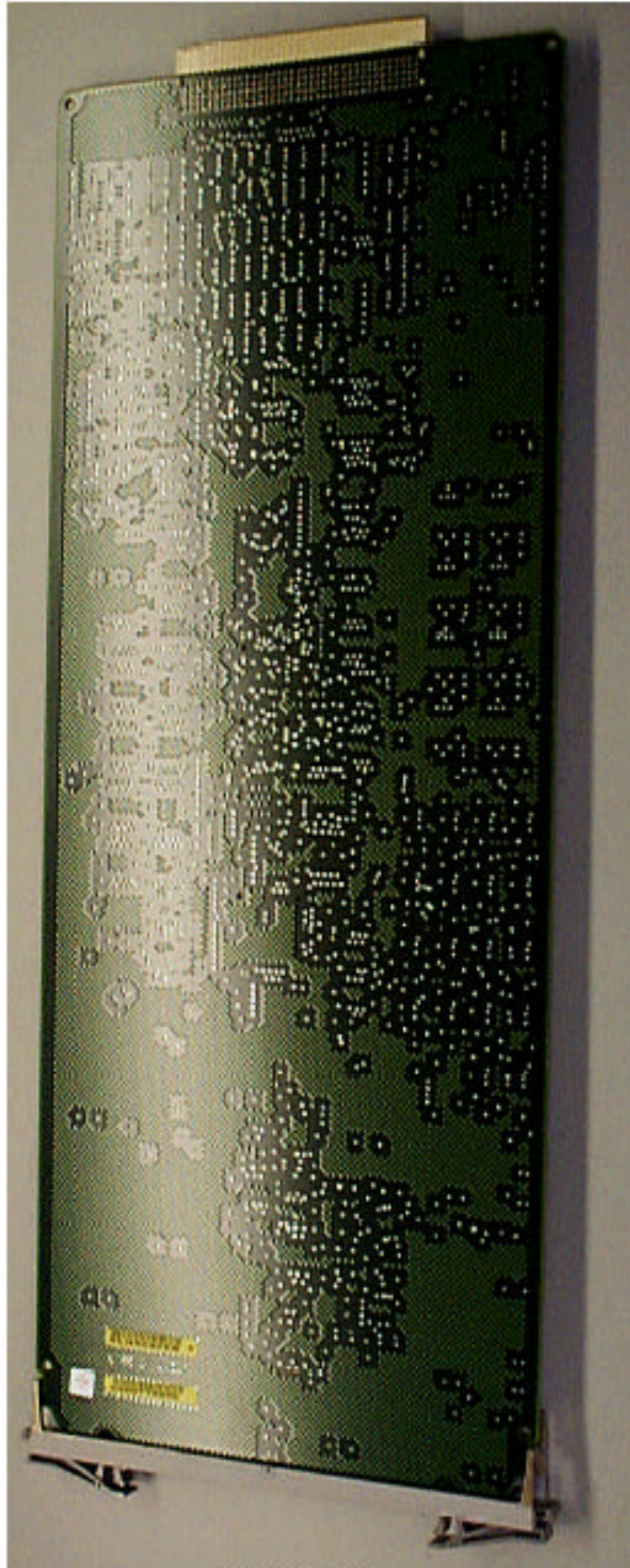


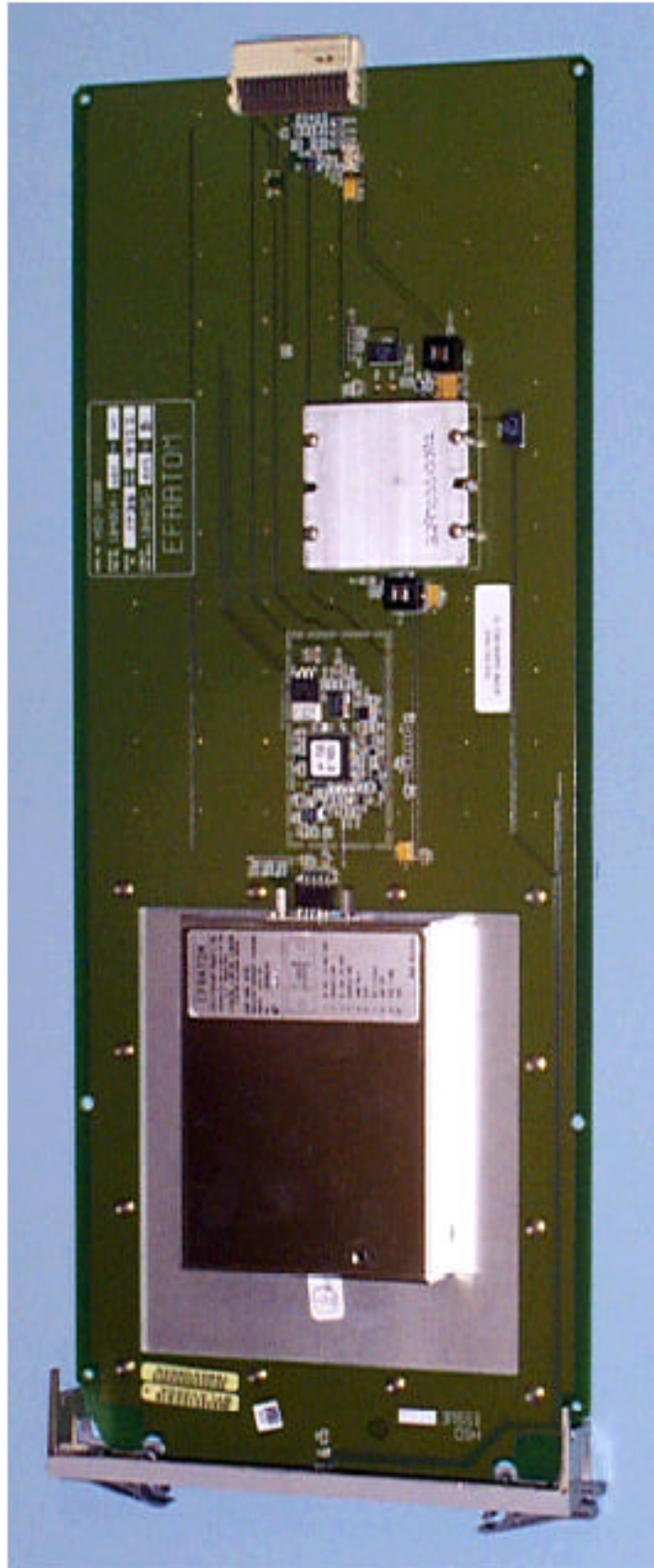
**IHET5BL1**  
**SC4812T @ 800MHz**  
**Switch Card Back**



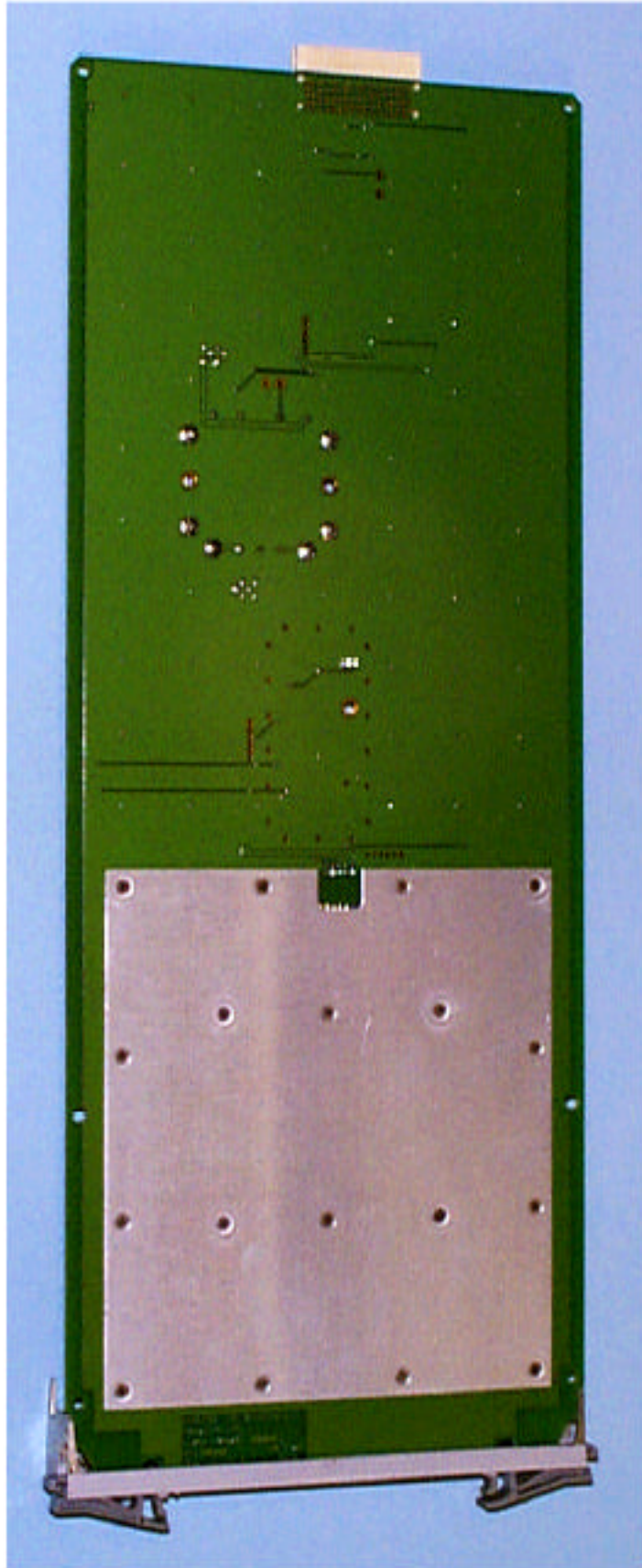
**IHET5BL1  
SC4812T @ 800MHz  
AMR Front**



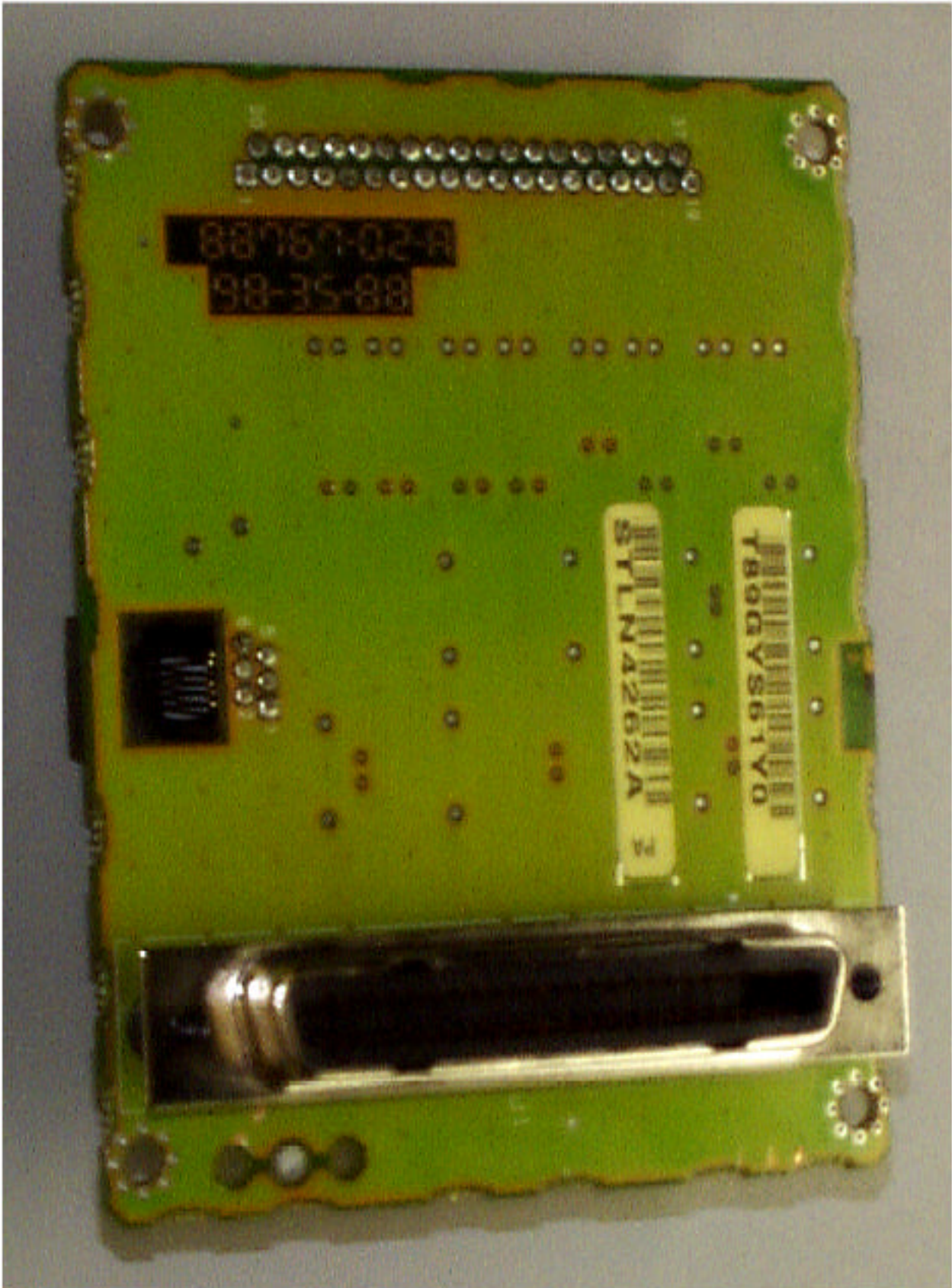
**IHET5BL1**  
**SC4812T @ 800MHz**  
**AMR Back**



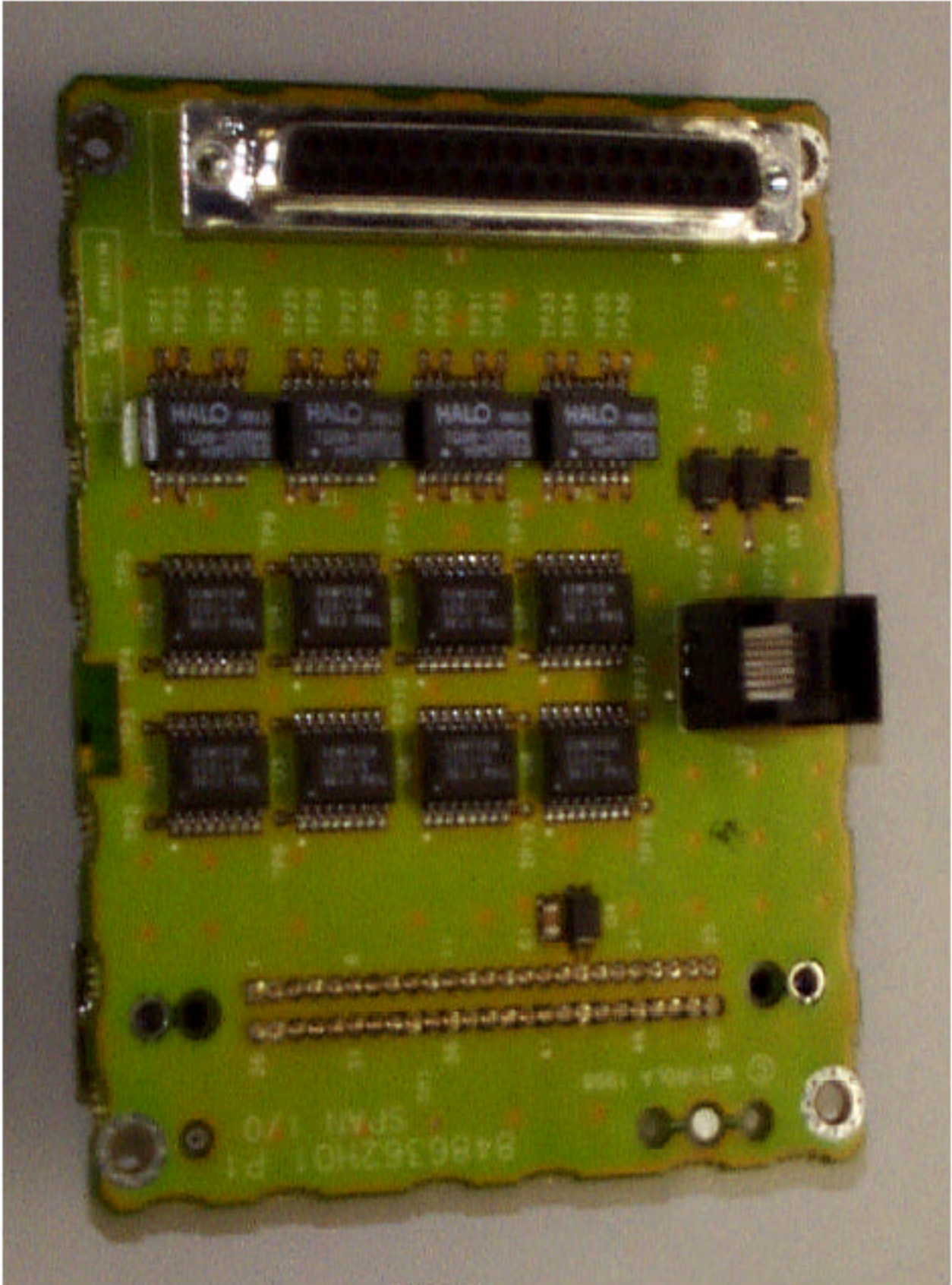
**IHET5BL1**  
**SC4812T @ 800MHz**  
**HSO Front**



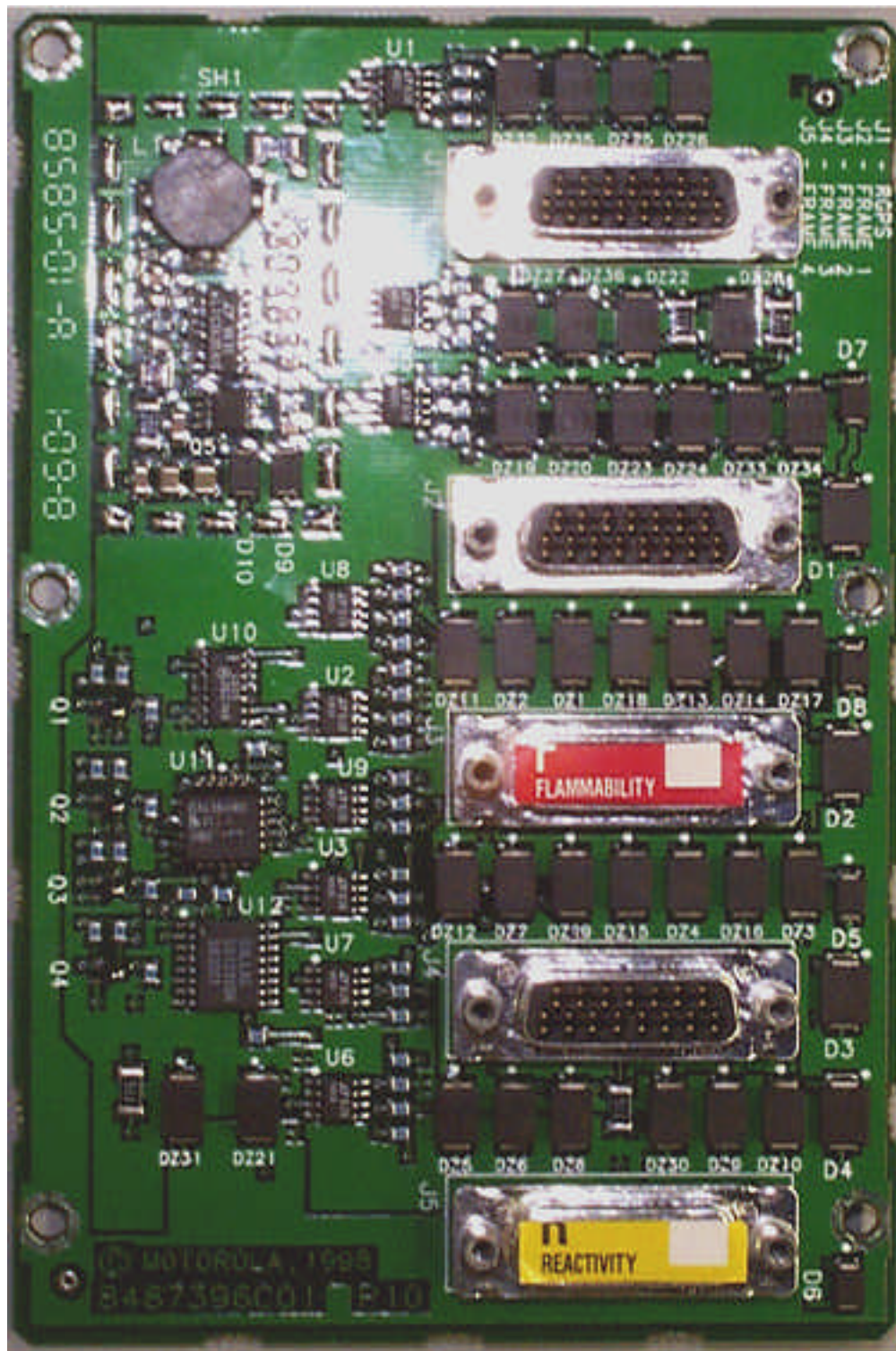
**IHET5BL1**  
**SC4812T @ 800MHz**  
**HSO Back**



**IHET5BL1**  
**SC4812T @ 800MHz**  
**Span I/O Front**

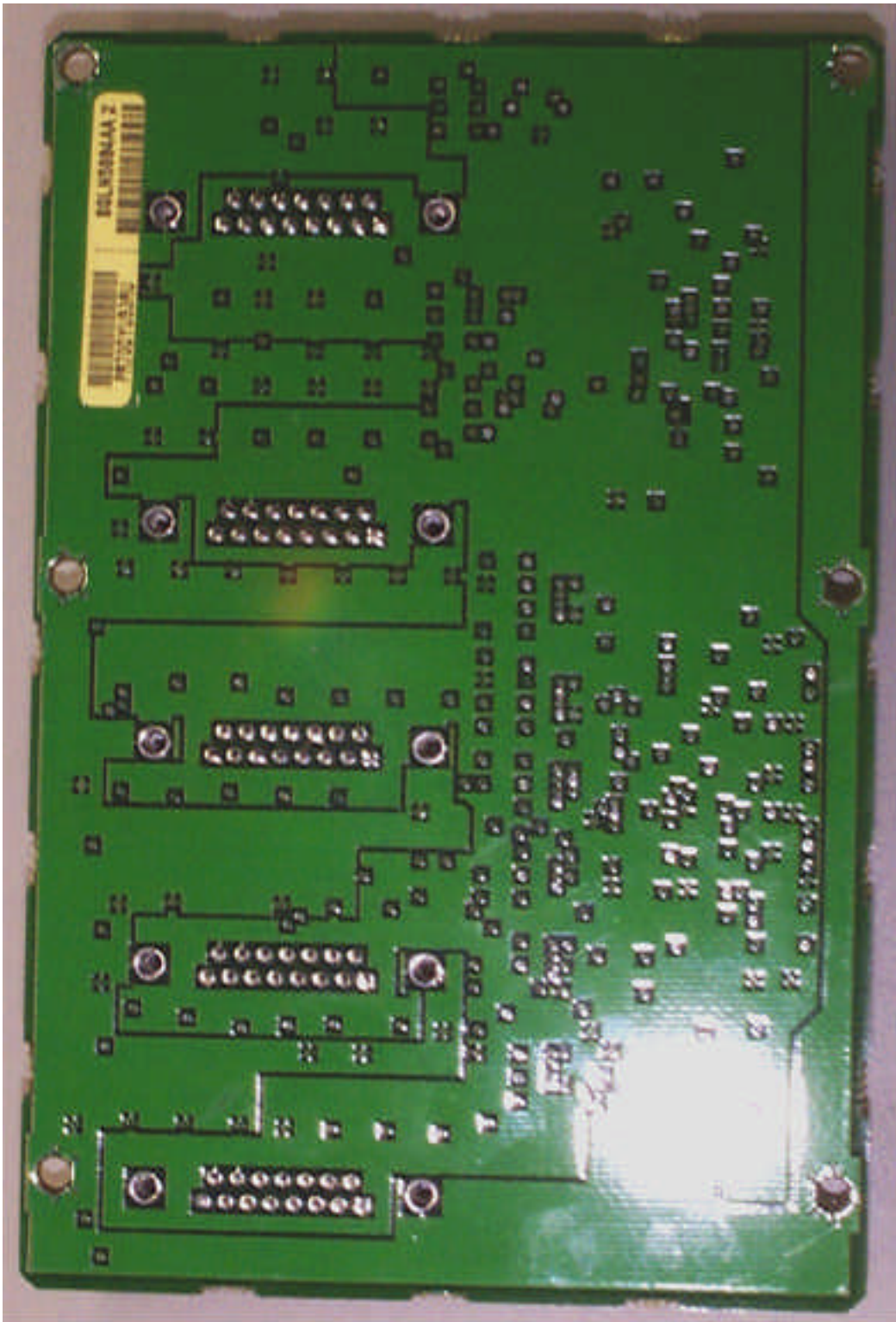


**IHET5BL1  
SC4812T @ 800MHz  
Span I/O Back**

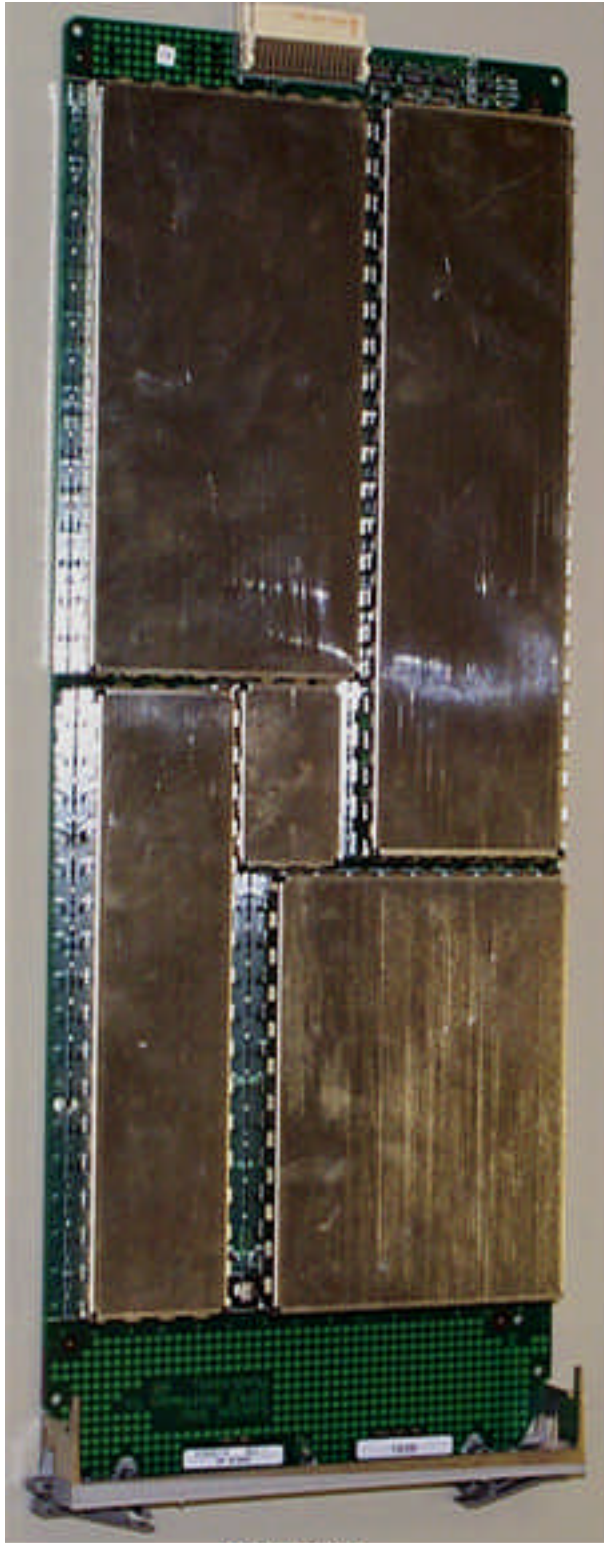


**IHE5BL1**  
**SC4812T @ 800MHz**  
**RGD Front**

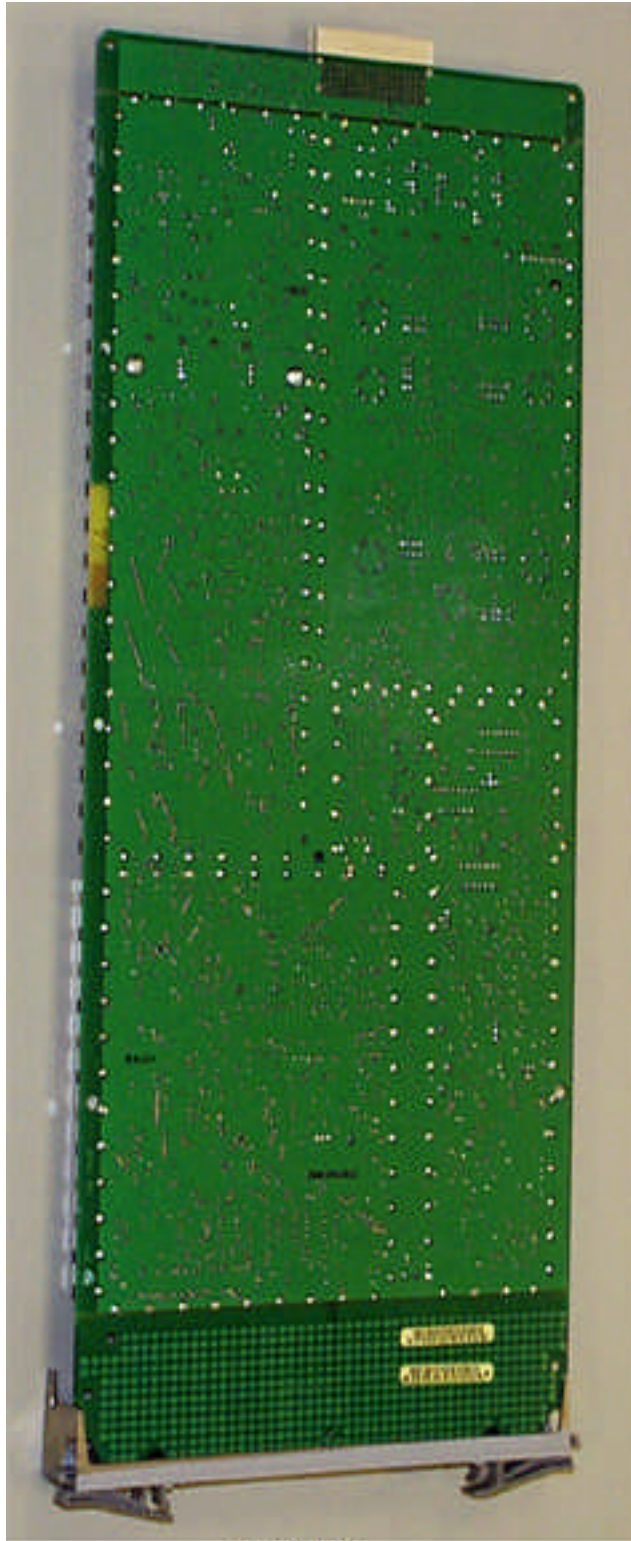




**IHET5BL1  
SC4812T @ 800MHz  
RGD Back**



**IHET5BL1  
SC4812T @ 800MHz  
LFR Front**



**IHET5BL1**  
**SC4812T @ 800MHz**  
**LFRR Back**