



Exhibit 11: SAR Test Report IHDT6FF1

Date of test: 06/22/2005

Date of Report: 06/30/2005

Laboratory: Motorola Personal Communications Sector Product Safety & Compliance Laboratory
600 N. US Highway 45
Room: MW113
Libertyville, Illinois 60048

Test Responsible: Paul Ma
RF Engineer

Accreditation: This laboratory is accredited to ISO/IEC 17025-1999 to perform the following tests:



Tests:
Electromagnetic Specific Absorption Rate

Procedures:
ANSI/IEEE C95.1-1992, 1999
(SAR) IEEE C95.3-1991
IEEE 1528, IEC 62209-1
FCC OET Bulletin 65 (*including Supplements A, B, C*)
Australian Communications Authority Radio
Communications (Electromagnetic Radiation – Human
Exposure) Standard 1999
CENELEC EN 50361 (2001)
APP-0247
DOI-0876, 0900, 0902, 0904, 0915

Simulated Tissue Preparation
RF Power Measurement

On the following products or types of products:

Wireless Communications Devices (Examples): Two Way Radios; Portable Phones (including Cellular, Licensed Non-Broadcast and PCS); Low Frequency Readers; and Pagers

A2LA certificate #1651-01

Statement of Compliance:

Motorola declares under its sole responsibility that portable cellular telephone FCC ID IHDT6FF1 to which this declaration relates, is in conformity with the appropriate General Population/Uncontrolled RF exposure standards, recommendations and guidelines (FCC 47 CFR §2.1093). It also declares that the product was tested in accordance with the appropriate measurement standards, guidelines and recommended practices. Any deviations from these standards, guidelines and recommended practices are noted below:

(none)

©Motorola, Inc. 2005

This test report shall not be reproduced except in full, without written approval of the laboratory.

The results and statements contained herein relate only to the items tested. The names of individuals involved may be mentioned only in connection with the statements or results from this report.

Motorola encourages all feedback, both positive and negative, on this test report.

Table of Contents

1. INTRODUCTION	3
2. DESCRIPTION OF THE DEVICE UNDER TEST.....	3
2.1 Antenna description	3
2.2 Device description.....	3
3. TEST EQUIPMENT USED.....	4
3.1 Dosimetric System	4
3.2 Additional Equipment.....	4
4. ELECTRICAL PARAMETERS OF THE TISSUE SIMULATING LIQUID	4
5. SYSTEM ACCURACY VERIFICATION.....	5
6. TEST RESULTS.....	5
6.1 Head Adjacent Test Results.....	6
6.2 Body Worn Test Results	8
APPENDIX 1: SAR DISTRIBUTION COMPARISON FOR SYSTEM ACCURACY VERIFICATION	11
APPENDIX 2: SAR DISTRIBUTION PLOTS FOR PHANTOM HEAD ADJACENT USE	12
APPENDIX 3: SAR DISTRIBUTION PLOTS FOR BODY WORN CONFIGURATION	13
APPENDIX 4: PROBE CALIBRATION CERTIFICATE	14
APPENDIX 5: MEASUREMENT UNCERTAINTY BUDGET	15
APPENDIX 6: PHOTOGRAPHS OF DEVICE UNDER TEST.....	18

1 Introduction

The Motorola Personal Communications Sector Product Safety Laboratory has performed measurements of the maximum potential exposure to the user of portable cellular phone (FCC ID IHDT6FF1). The Specific Absorption Rate (SAR) of this product was measured. The portable cellular phone was tested in accordance with FCC OET Bulletin 65 Supplement C 01-01.

2 Description of the Device Under Test

2.1 Antenna description

Type	FJA Antenna	
Location	bottom of bottom flip	
Dimensions	Length (max)	94mm
	Width (max)	0.5mm
Configuration	Fixed Internal Antenna	

2.2 Device description

FCC ID Number	IHDT6FF1									
Serial number	TA10100942									
Mode(s) of Operation	GSM 900	GSM 1800	GSM 1900	GPRS 900	GPRS 1800	GPRS 1900	EDGE 900	EDGE 1800	EDGE 1900	BlueTooth
Modulation Mode(s)	GMSK	GMSK	GMSK	GMSK	GMSK	GMSK	8PSK	8PSK	8PSK	GMSK
Maximum Output Power Setting	33.00 dBm	30.00 dBm	30.00 dBm	33.00 dBm	30.00 dBm	30.00 dBm	33.00 dBm	30.00 dBm	30.00 dBm	0.00 - 4.00 dBm
Duty Cycle	1:8	1:8	1:8	2:8	2:8	2:8	2:8	2:8	2:8	1:1
Transmitting Frequency Rang(s)	880.2-914.8 MHz	1710.2-1784.8 MHz	1850.2-1909.8 MHz	880.2-914.8 MHz	1710.2-1784.8 MHz	1850.2-1909.8 MHz	880.2-914.8 MHz	1710.2-1784.8 MHz	1850.2-1909.8 MHz	2400 - 2483.5 MHz
Production Unit or Identical Prototype (47 CFR §2.908)	Identical Prototype									
Device Category	Portable									
RF Exposure Limits	General Population / Uncontrolled									

3 Test Equipment Used

3.1 Dosimetric System

The Motorola Personal Communications Sector Product Safety & Compliance Laboratory utilizes a Dosimetric Assessment System (Dasy4™ v4.5) manufactured by Schmid & Partner Engineering AG (SPEAG™), of Zurich Switzerland. All the SAR measurements are taken within a shielded enclosure. The overall RSS uncertainty of the measurement system is $\pm 11.1\%$ ($K=1$) with an expanded uncertainty of $\pm 22.2\%$ ($K=2$). The measurement uncertainty budget is given in Appendix 6. Per IEEE 1528, this uncertainty budget is applicable to the SAR range of 0.4 W/kg to 10 W/kg. The list of calibrated equipment used for the measurements is shown below.

Description	Serial Number	Cal Due Date
DASY4 DAE4	376	01/13/2006
E-Field Probe ES3DV3	3037	11/25/2005
Dipole Validation Kit, D1800V2	251tr	
S.A.M. Phantom used for 1900MHz	TP-1159	

3.2 Additional Equipment

Description	Serial Number	Cal Due Date
Signal Generator HP8648C	3847A04844	10/25/2005
Power Meter E4419B	GB39511087	1/25/2006
Power Sensor #1 - E9301A	US39210931	09/16/2005
Power Sensor #2 - E9301A	US39210932	09/16/2005
Network Analyzer HP8753ES	US39171846	09/03/2005
Dielectric Probe Kit HP85070B	US99360070	N/A

4 Electrical parameters of the tissue simulating liquid

Prior to conducting SAR measurements, the relative permittivity, ϵ_r , and the conductivity, σ , of the tissue simulating liquids were measured with the HP85070 Dielectric Probe Kit. These values, along with the temperature of the tissue simulate are shown in the table below. The recommended limits for maximum permittivity and minimum conductivity are also shown. These come from the Federal Communication Commission, OET Bulletin 65 Supplement C 01-01. It is seen that the measured parameters are satisfactory for compliance testing.

f (MHz)	Tissue type	Limits / Measured	Dielectric Parameters		
			ϵ_r	σ (S/m)	Temp (°C)
1880	Head	Measured, 06/22/2005	39	1.47	19.4
		Recommended Limits	40.0 $\pm 5\%$	1.40 $\pm 5\%$	18-25
	Body	Measured, 06/22/2005	52.2	1.58	19.6
		Recommended Limits	53.3 $\pm 5\%$	1.52 $\pm 5\%$	18-25

The list of ingredients and the percent composition used for the tissue simulates are indicated in the table below.

Ingredient	800MHz Head	800MHz Body	1900MHz Head	1900MHz Body
Sugar	57.0	44.9	--	30.80
DGBE	--	--	47.0	--
Water	40.45	53.06	52.8	68.91
Salt	1.45	0.94	0.2	0.29
HEC	1.0	1.0	--	--
Bact.	0.1	0.1	--	--

5 System Accuracy Verification

A system accuracy verification of the DASY4 v4.5 was performed using the measurement equipment listed in Section 3.1. The daily system accuracy verification occurs within center section of the SAM phantom.

A SAR measurement was performed to see if the measured SAR was within +/- 10% from the target SAR indicated in Section 8.3.7 Reference SAR Values in IEEE 1528. These tests were done at 900MHz and/or 1800MHz. These frequencies are within 100MHz of the mid-band frequency of the test device. This is within the allowable window given in Supplement C 01-01 *Appendix D System Verification* section item #5. The test was conducted on the same days as the measurement of the DUT. Recommended limits for maximum permittivity, minimum conductivity are shown in the table below. These come from the Federal Communication Commission, OET Bulletin 65 Supplement C 01-01. The obtained results from the system accuracy verification are displayed in the table below. The distributions of SAR compare well with those of the reference measurements (see Appendix 1). The tissue stimulant depth was verified to be 15.0cm \pm 0.5cm. Z-axis scans showing the SAR penetration are also included in Appendix 1. SAR values are normalized to 1W forward power delivered to the dipole.

f (MHz)	Description	SAR (W/kg), 1gram	Dielectric Parameters		Ambient Temp (°C)	Tissue Temp (°C)
			ϵ_r	σ (S/m)		
1800	Measured, 06/22/2005	39	39.4	1.39	20.0	20.0
	Recommended Limits	38.1	40.0 \pm 5%	1.4 \pm 5%	18-25	18-25

The following probe conversion factors were used on the E-Field probe(s) used for the system accuracy verification measurements:

Description	Serial Number	f (MHz)	Conversion Factor	Cal Cert pg #
E-Field Probe ES3DV3	SN3037	1810	5.16	8 of 9

6 Test Results

The test sample was operated in a test mode that allows control of the transmitter without the need to place actual phone calls. For the purposes of this test the unit is commanded to test mode and manually set to the proper channel, transmitter power level and transmit mode of operation. The phone was tested in the configurations stipulated in OET Bulletin 65 Supplement C 01-01. Motorola also followed the requirements in Supplement C / Appendix D: SAR Measurement Procedures, section titled “*Devices Operating Next To A Person’s Ear* “. These

directions state “The device should be tested on the left and right side of the head phantom in the “Cheek/Touch” and “Ear/Tilt” positions. When applicable, each configuration should be tested with the antenna in its fully extended and fully retracted positions. These test configurations should be tested at the high, middle and low frequency channels of each operating mode; for example, AMPS, CDMA, and TDMA. If the SAR measured at the middle channel for each test configuration (left, right, Cheek/Touch, Tile/Ear, extended and retracted) is at least 2.0 dB lower than the SAR limit, testing at the high and low channels is optional for such test configuration(s).”

The DASY4 v4.5 SAR measurement system specified in section 3.1 was utilized within the intended operations as set by the SPEAG™ setup. The phone was positioned into the measurement configurations using the positioner supplied with the DASY4 v4.5 SAR measurement system. The measured dielectric constant of the material used for the positioner is less than 2.9 and the loss tangent is less than 0.02 ($\pm 30\%$) at 850MHz. The default settings for the “coarse” and “cube” scans were chosen and use for measurements. The grid spacing of the course scan was set to 15cm as shown in the SAR plots included in appendix 2 and 3. Please refer to the DASY manual for additional information on SAR scanning procedures and algorithms used.

The Cellular Phone (FCC ID IHDT6FF1) has the following battery options:

SNN5766A 810mAH Battery

SNN5767A 1010mAH Battery

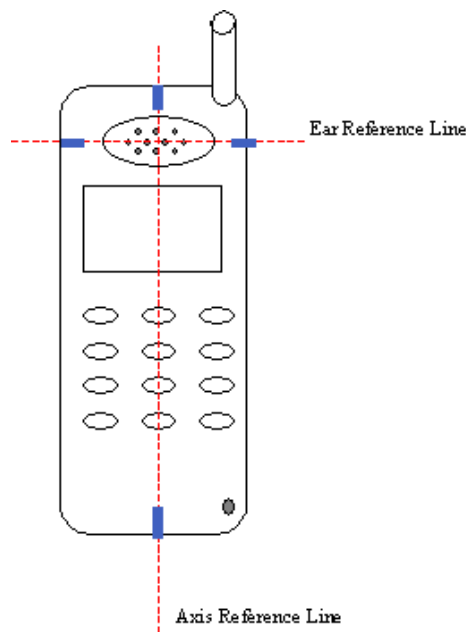
The battery with the highest capacity is the SNN5767A. This battery was used to do most of the SAR testing. The phone was placed in the SAR measurement system with a fully charged battery. The configuration that resulted in the highest SAR values were tested using the other battery listed above.

6.1 Head Adjacent Test Results

To aid in positioning repeatability, the ear reference line of the device and the axis reference line of the device have been physically added using a non-metallic marker.

- Per Figure 1, the "Ear Reference Line" is centered vertically through the center of the listening area (as defined by the speaker holes in the housing).
- The "Axis Reference Line" bisects the front surface of the device at its top and bottom edges.
- The intersection of these two lines defines the location of the "Ear Reference Point".

The lines drawn on the device extended to the outside edges, as shown in blue in the figure below, & wrap around the sides of the device.



The SAR results shown in tables 1 through 3 are maximum SAR values averaged over 1 gram of phantom tissue. Also shown are the measured conducted output powers, the temperature of the test facility during the test, the temperature of the tissue simulate after the test, the measured drift and the extrapolated SAR. The exact method of extrapolation is $\text{New SAR} = \text{Old SAR} * 10^{(-\text{drift}/10)}$. The SAR reported at the end of the measurement process by the DASY™ measurement system can be scaled up by the measured drift to determine the SAR at the beginning of the measurement process. This is the most conservative SAR because it corresponds to the average output power at the beginning of the SAR test. This extrapolation has been done because when the DUT is operating properly it may exhibit a slump in radiated power and SAR over time. This is verified by measuring the SAR drift after the test. The test conditions indicated as bold numbers in the following table are included in Appendix 2

The SAR measurements were performed using the SAM phantoms listed in section 3.1. Since same phantoms and tissue simulate are used for the system accuracy verification as the device SAR measurements, the Z-axis scans included in within Appendix 1 are applicable for verification of tissue simulate depth to be 15.0cm \pm 0.5cm. All other test conditions measured lower SAR values than those included in Appendix 2.

The following probe conversion factors were used on the E-Field probe(s) used for the head adjacent measurements:

Description	Serial Number	f (MHz)	Conversion Factor	Cal Cert pg #
E-Field Probe ES3DV3	SN3037	1810	5.16	8 of 9

f (MHz)	Description	Conducted Output Power (dBm)	Cheek / Touch Position							
			Left Head				Right Head			
			Measured (W/kg)	Drift (dB)	Extrapolated (W/kg)	Simulate Temp (°C)	Measured (W/kg)	Drift (dB)	Extrapolated (W/kg)	Simulate Temp (°C)
Digital 1900MHz	Channel 512	30.04								
	Channel 661	30.02	0.237	-0.12	0.24	19.4	0.363	0.047	0.36	19.4
	Channel 810	30.02								

Table 1: SAR measurement results for the portable cellular telephone FCC ID IHDT6FF1 at highest possible output power. Measured against the head in the Cheek/Touch Position.

f (MHz)	Description	Conducted Output Power (dBm)	15° Tilt Position							
			Left Head				Right Head			
			Measured (W/kg)	Drift (dB)	Extrapolated (W/kg)	Simulate Temp (°C)	Measured (W/kg)	Drift (dB)	Extrapolated (W/kg)	Simulate Temp (°C)
Digital 1900MHz	Channel 512	30.04								
	Channel 661	30.02	0.05	-0.08	0.05	19.4	0.057	-0.15	0.06	18.8
	Channel 810	30.02								

Table 2: SAR measurement results for the portable cellular telephone FCC ID IHDT6FF1 at highest possible output power. Measured against the head in the Cheek/Touch Position.

f (MHz)	Description	Conducted Output Power (dBm)	Cheek / Touch Position using SNN5766A battery							
			Left Head				Right Head			
			Measured (W/kg)	Drift (dB)	Extrapolated (W/kg)	Simulate Temp (°C)	Measured (W/kg)	Drift (dB)	Extrapolated (W/kg)	Simulate Temp (°C)
Digital 1900MHz	Channel 512	30.04								
	Channel 661	30.02					0.372	-0.014	0.37	19.4
	Channel 810	30.02								

Table 3: SAR measurement results for the portable cellular telephone FCC ID IHDT6FF1 at highest possible output power. Measured against the head in the 15° Tilt Position.

6.2 Body Worn Test Results

The SAR results shown in tables 4 through 6 are the maximum SAR values averaged over 1 gram of phantom tissue. Also shown are the measured conducted output powers, the temperature of the test facility during the test, the temperature of the tissue simulate after the test, the measured drift and the extrapolated SAR. The exact method of extrapolation is $\text{New SAR} = \text{Old SAR} * 10^{(-\text{drift}/10)}$. The SAR reported at the end of the measurement process by the DASY™ measurement system can be scaled up by the measured drift to determine the SAR at the beginning of the measurement process. This is the most conservative SAR because it corresponds to the average output power at the beginning of the SAR test. This extrapolation has been done because when the DUT is operating properly it may exhibit a slump in radiated power and SAR over time. This is verified by measuring the SAR drift after the test. The test conditions indicated as bold numbers in the following table are included in Appendix 3. All other test conditions measured lower SAR values than those included in Appendix 3.

A “flat” phantom was for the body-worn tests. This “flat” phantom is made out of 1” thick natural High Density Polyethylene with a thickness at the bottom equal to 2.0mm. It measures 52.7cm(long) x 26.7cm(wide) x 21.2cm(tall). The measured dielectric constant of the material used is less than 2.3 and the loss tangent is less than 0.0046 all the way up to 2.184GHz.

The tissue stimulant depth was verified to be 15.0cm \pm 0.5cm. The same device holder described in section 6 was used for positioning the phone. The functional accessories were divided into two categories, the ones with metal components and the ones with non-metal components. For non-metallic component accessories', testing was performed on the accessory that displayed the closest proximity to the flat phantom. Each metallic component accessory, if any, was checked for uniqueness of metal component so that each is tested with the device. If multiple accessories shared an identical metal component, only the accessory that dictates the closest spacing to the body was tested. The cellular phone was tested with a headset connected to the device for all body-worn SAR measurements.

The tissue stimulant depth was verified to be 15.0cm \pm 0.5cm. The same device holder described in section 6 was used for positioning the phone. There are no Body-Worn Accessories available for this phone at the time of testing hence the device was tested per the supplement C testing guidelines for devices that do not have body worn accessories. The phone was placed a maximum of 1 inch away from a flat phantom per the supplement C standard guidelines to perform SAR measurement. The cellular phone was tested with a headset connected to the device for all body-worn SAR measurements.

The following probe conversion factors were used on the E-Field probe(s) used for the body worn measurements:

Description	Serial Number	f (MHz)	Conversion Factor	Cal Cert pg #
E-Field Probe ES3DV3	SN3037	1810	4.71	8 of 9

f (MHz)	Description	Conducted Output Power (dBm)	Body Worn							
			Front of phone 15 mm away from phantom (GSM)				Back of phone 15 mm away from phantom (GSM)			
			Measured (W/kg)	Drift (dB)	Extrapolated (W/kg)	Simulate Temp (°C)	Measured (W/kg)	Drift (dB)	Extrapolated (W/kg)	Simulate Temp (°C)
Digital 1900MHz	Channel 512	30.04								
	Channel 661	30.02	0.145	-0.04	0.15	19.7	0.287	-0.07	0.29	19.5
	Channel 810	30.02								

Table 4: SAR measurement results for the portable cellular telephone FCC ID IHDT6FF1 at highest possible output power. Measured against the body.

f (MHz)	Description	Conducted Output Power (dBm)	Body Worn							
			Back of phone 15 mm away from phantom (GSM & Bluetooth enabled)				Back of phone 25 mm away from phantom (GPRS Class 10)			
			Measured (W/kg)	Drift (dB)	Extrapolated (W/kg)	Simulate Temp (°C)	Measured (W/kg)	Drift (dB)	Extrapolated (W/kg)	Simulate Temp (°C)
Digital 1900MHz	Channel 512	30.04								
	Channel 661	30.02	0.33	-0.084	0.34	19.6	0.245	-0.11	0.25	19.5
	Channel 810	30.02								

Table 5: SAR measurement results for the portable cellular telephone FCC ID IHDT6FF1 at highest possible output power. Measured against the body.

f (MHz)	Description	Conducted Output Power (dBm)	Body Worn							
			Back of phone 25 mm away from phantom (EDGE Class 6)				Back of phone 15 mm away from phantom (GSM with SNN5766A & Bluetooth enabled)			
			Measured (W/kg)	Drift (dB)	Extrapolated (W/kg)	Simulate Temp (°C)	Measured (W/kg)	Drift (dB)	Extrapolated (W/kg)	Simulate Temp (°C)
Digital 1900MHz	Channel 512	30.04								
	Channel 661	30.02	0.091	-0.073	0.09	19.6	0.4	-0.099	0.41	19.7
	Channel 810	30.02								

Table 6: SAR measurement results for the portable cellular telephone FCC ID IHDT6FF1 at highest possible output power. Measured against the body.

Appendix 1

SAR distribution comparison for the system accuracy verification

Date/Time: 6/22/2005 6:33:02 AM

Test Laboratory: Motorola

062205 1800Mhz GOOD 2.4%

DUT: Dipole 1800 MHz; Type: D1800V2; Serial: D1800V2 - SN:251tr

Procedure Notes: 1800 MHz System Performance Check / Dipole Sn# 251tr PM1 Power = 200 mW

Sim.Temp@meas = 19.8°C Sim.Temp@SPC = 20.0°C Room Temp @ SPC = 20°C

Communication System: CW - Dipole; Frequency: 1800 MHz; Channel Number: 8; Duty Cycle: 1:1
Medium: VALIDATION Only; Medium parameters used: $\sigma = 1.39$ mho/m, $\epsilon_r = 39.4$; $\rho = 1000$ kg/m³

DASY4 Configuration:

- Probe: ES3DV3 - SN3037; ConvF(5.16, 5.16, 5.16); Calibrated: 11/25/2004
- Sensor-Surface: 4mm (Mechanical Surface Detection)
- Electronics: DAE4 Sn376; Calibrated: 1/13/2005
- Phantom: R3: Sect.1, Amy Twin; Type: Amy Twin Flat; Serial: n/a;
- Measurement SW: DASY4, V4.5 Build 19; Postprocessing SW: SEMCAD, V1.8 Build 147

Daily SPC Check/Dipole Area Scan (9x4x1):

Measurement grid: dx=15mm, dy=15mm

Maximum value of SAR (measured) = 7.98 mW/g

Daily SPC Check/0-Degree 5x5x7 Cube (5x5x7)/Cube 0:

Measurement grid: dx=8mm, dy=8mm, dz=5mm

Reference Value = 77.3 V/m; Power Drift = -0.029 dB

Peak SAR (extrapolated) = 14.1 W/kg

SAR(1 g) = 7.81 mW/g; SAR(10 g) = 4.1 mW/g

Maximum value of SAR (measured) = 8.72 mW/g

Daily SPC Check/90-Degree 5x5x7 Cube (5x5x7)/Cube 0:

Measurement grid: dx=8mm, dy=8mm, dz=5mm

Reference Value = 77.3 V/m; Power Drift = -0.029 dB

Peak SAR (extrapolated) = 14.0 W/kg

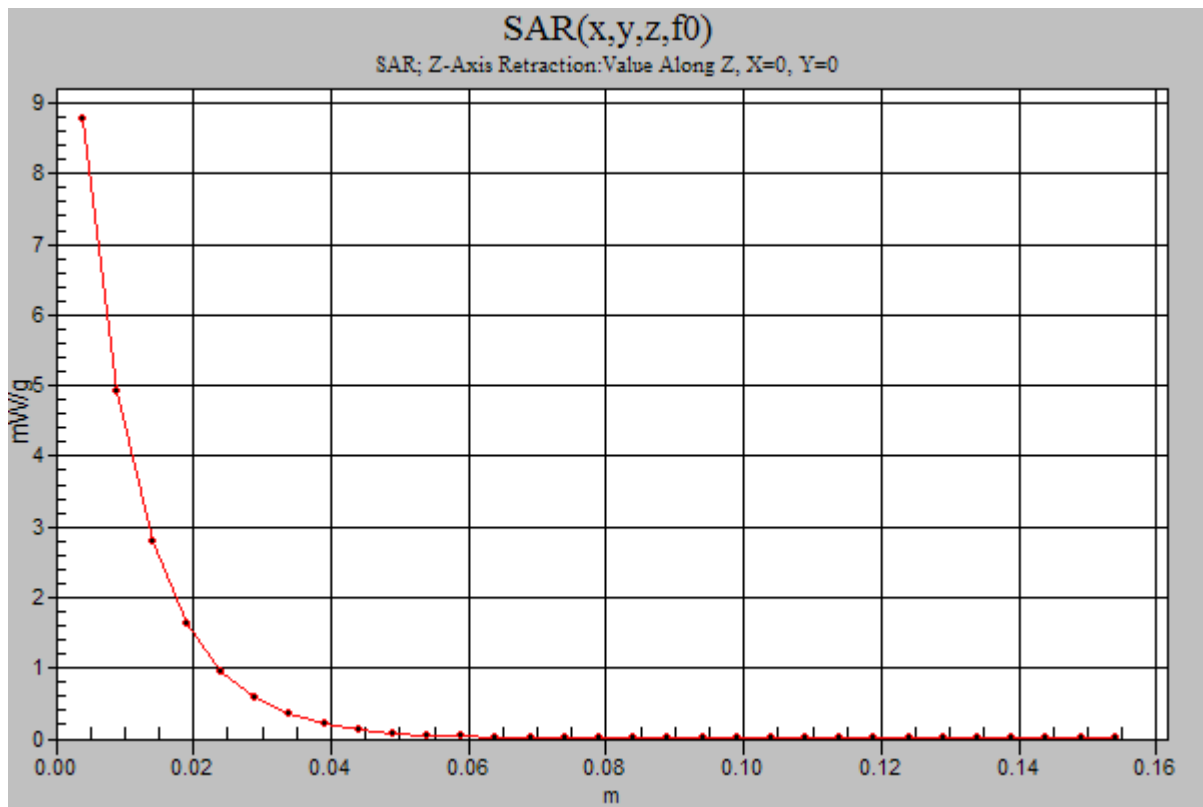
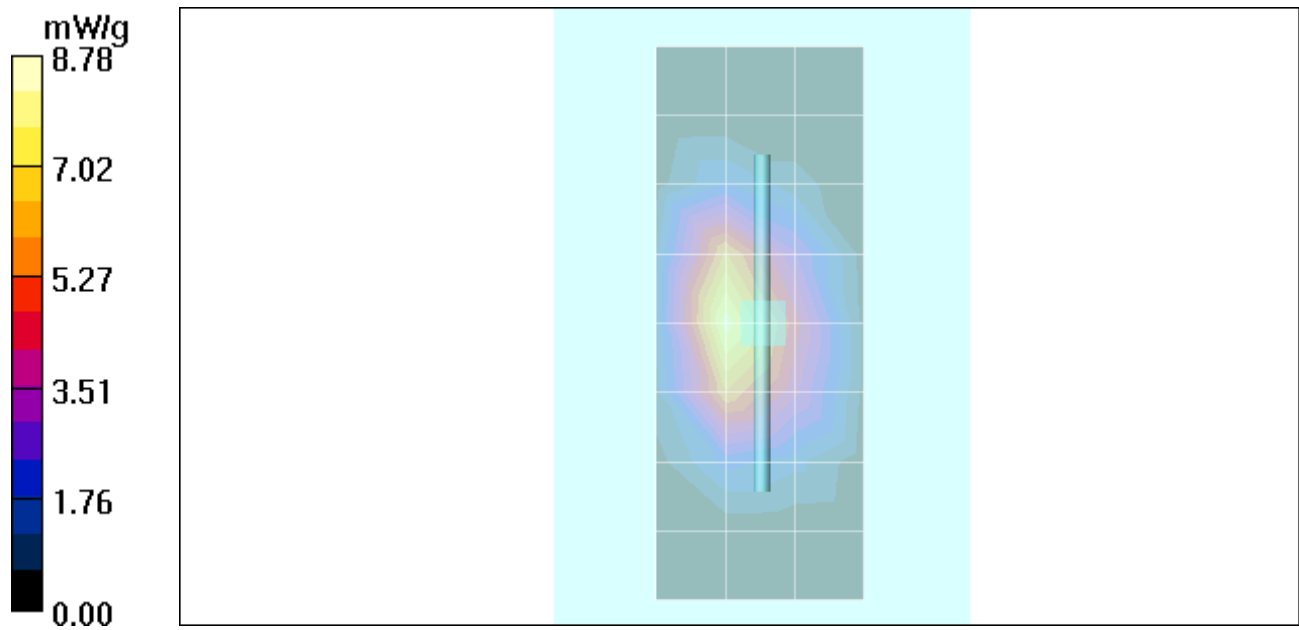
SAR(1 g) = 7.79 mW/g; SAR(10 g) = 4.11 mW/g

Maximum value of SAR (measured) = 8.73 mW/g

Daily SPC Check/Z-Axis Retraction (1x1x31):

Measurement grid: dx=20mm, dy=20mm, dz=5mm

Maximum value of SAR (measured) = 8.78 mW/g



Appendix 2

SAR distribution plots for Phantom Head Adjacent Use

Date/Time: 6/22/2005 1:49:16 PM

Test Laboratory: Motorola

1900 RH Cheek ch 661

Serial: TA10100942

Procedure Notes: Pwr Step: 0 Antenna Position: Internal Accessory Model #: ???**Battery Model #: SNN5767A DEVICE POSITION (cheek or rotated): Cheek**

Communication System: GSM 1900; Frequency: 1880 MHz; Channel Number: 661; Duty Cycle: 1:8

Medium: Back-Up Glycol Head; Medium parameters used: $\sigma = 1.47$ mho/m, $\epsilon_r = 39$; $\rho = 1000$ kg/m³

DASY4 Configuration:

- Probe: ES3DV3 - SN3037; ConvF(5.16, 5.16, 5.16); Calibrated: 11/25/2004
- Sensor-Surface: 4mm (Mechanical Surface Detection)
- Electronics: DAE4 Sn376; Calibrated: 1/13/2005
- Phantom: R#3 Glycol,Sugar SAM (extended range), Rev.1 (25-Mar-05); Type: SAM v4.0; Serial: TP-1159;
- Measurement SW: DASY4, V4.5 Build 19; Postprocessing SW: SEMCAD, V1.8 Build 147

Right Head Template/Zoom Scan (7x7x7)/Cube 0:

Measurement grid: dx=5mm, dy=5mm, dz=5mm

Reference Value = 15.7 V/m; Power Drift = 0.047 dB

Peak SAR (extrapolated) = 0.565 W/kg

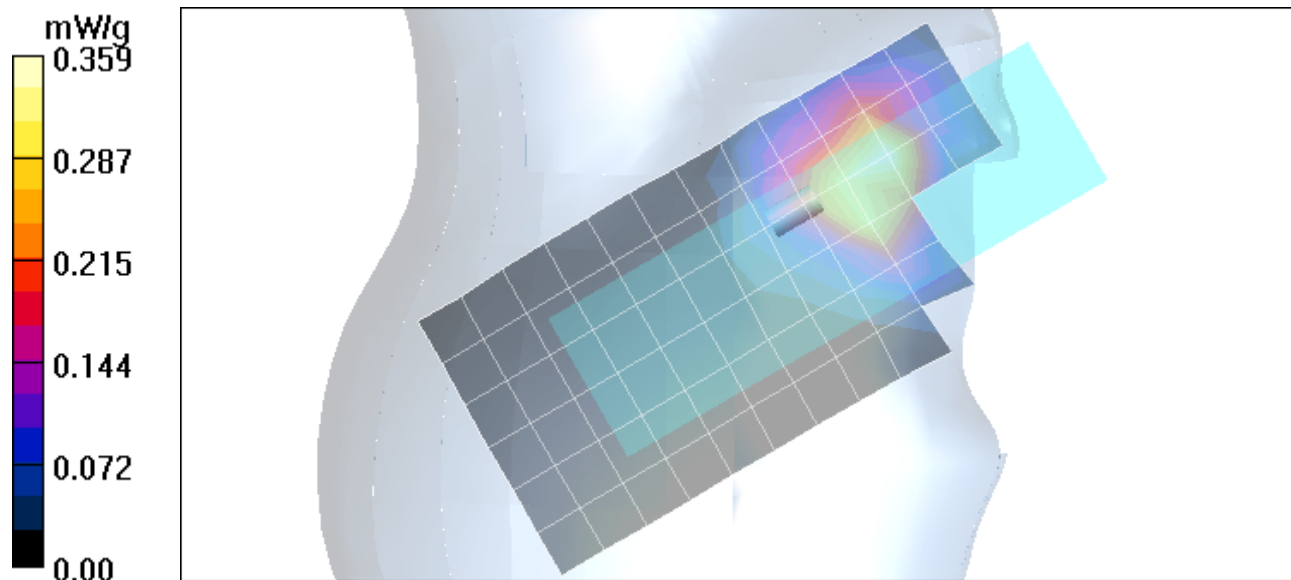
SAR(1 g) = 0.363 mW/g; SAR(10 g) = 0.221 mW/g

Maximum value of SAR (measured) = 0.394 mW/g

Right Head Template/Area Scan - Normal (15mm) (7x17x1):

Measurement grid: dx=15mm, dy=15mm

Maximum value of SAR (measured) = 0.359 mW/g



Date/Time: 6/22/2005 3:05:53 PM

Test Laboratory: Motorola

1900 RH Cheek ch 661 with battery SNN5766A

Serial: TA10100942

Procedure Notes: Pwr Step: 0 Antenna Position: Internal Accessory Model #: ???**Battery Model #: SNN5766A DEVICE POSITION (cheek or rotated): Cheek**

Communication System: GSM 1900; Frequency: 1880 MHz; Channel Number: 661; Duty Cycle: 1:8

Medium: Back-Up Glycol Head; Medium parameters used: $\sigma = 1.47$ mho/m, $\epsilon_r = 39$; $\rho = 1000$ kg/m³

DASY4 Configuration:

- Probe: ES3DV3 - SN3037; ConvF(5.16, 5.16, 5.16); Calibrated: 11/25/2004
- Sensor-Surface: 4mm (Mechanical Surface Detection)
- Electronics: DAE4 Sn376; Calibrated: 1/13/2005
- Phantom: R#3 Glycol,Sugar SAM (extended range), Rev.1 (25-Mar-05); Type: SAM v4.0; Serial: TP-1159;
- Measurement SW: DASY4, V4.5 Build 19; Postprocessing SW: SEMCAD, V1.8 Build 147

Right Head Template/Zoom Scan (7x7x7)/Cube 0:

Measurement grid: dx=5mm, dy=5mm, dz=5mm

Reference Value = 15.6 V/m; Power Drift = -0.014 dB

Peak SAR (extrapolated) = 0.571 W/kg

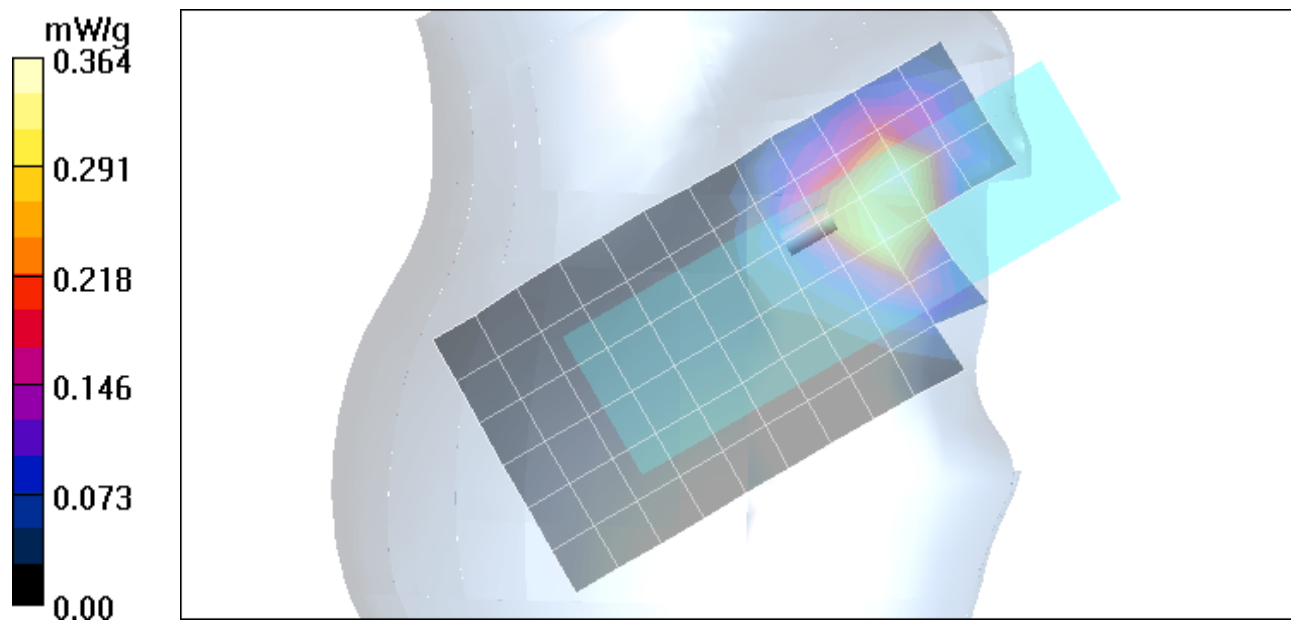
SAR(1 g) = 0.372 mW/g; SAR(10 g) = 0.230 mW/g

Maximum value of SAR (measured) = 0.401 mW/g

Right Head Template/Area Scan - Normal (15mm) (7x17x1):

Measurement grid: dx=15mm, dy=15mm

Maximum value of SAR (measured) = 0.364 mW/g



Date/Time: 6/22/2005 11:32:30 AM

Test Laboratory: Motorola**1900 LH Tilt ch 661**

Serial: TA10100942

Procedure Notes: Pwr Step: 0 Antenna Position: Internal Accessory Model #: ???**Battery Model #: SNN5767A DEVICE POSITION (cheek or rotated): Rotated**

Communication System: GSM 1900; Frequency: 1880 MHz; Channel Number: 661; Duty Cycle: 1:8

Medium: Back-Up Glycol Head; Medium parameters used: $\sigma = 1.47$ mho/m, $\epsilon_r = 39$; $\rho = 1000$ kg/m³

DASY4 Configuration:

- Probe: ES3DV3 - SN3037; ConvF(5.16, 5.16, 5.16); Calibrated: 11/25/2004
- Sensor-Surface: 4mm (Mechanical Surface Detection)
- Electronics: DAE4 Sn376; Calibrated: 1/13/2005
- Phantom: R#3 Glycol,Sugar SAM (extended range), Rev.1 (25-Mar-05); Type: SAM v4.0; Serial: TP-1159;
- Measurement SW: DASY4, V4.5 Build 19; Postprocessing SW: SEMCAD, V1.8 Build 147

Left Head Template/Zoom Scan (7x7x7)/Cube 0:

Measurement grid: dx=5mm, dy=5mm, dz=5mm

Reference Value = 6.07 V/m; Power Drift = -0.078 dB

Peak SAR (extrapolated) = 0.078 W/kg

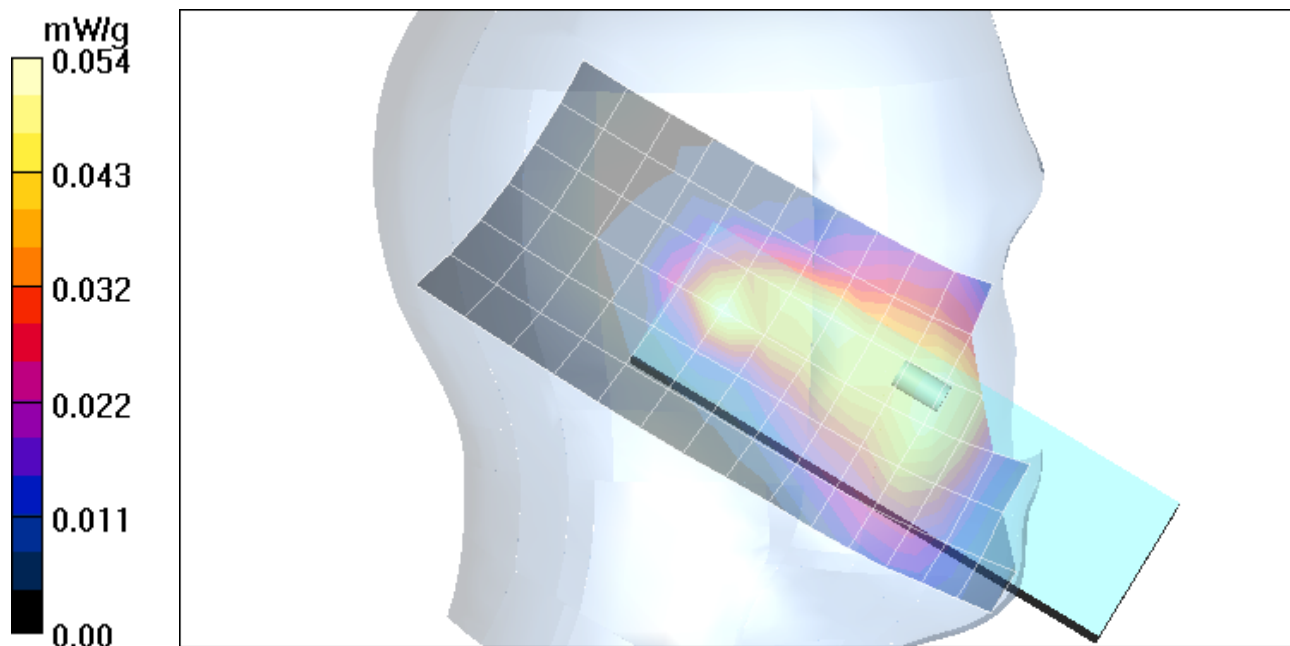
SAR(1 g) = 0.050 mW/g; SAR(10 g) = 0.030 mW/g

Maximum value of SAR (measured) = 0.055 mW/g

Left Head Template/Area Scan - Normal (15mm) (7x17x1):

Measurement grid: dx=15mm, dy=15mm

Maximum value of SAR (measured) = 0.054 mW/g



Date/Time: 6/22/2005 1:06:38 PM

Test Laboratory: Motorola

1900 LH Cheek ch 661

Serial: TA10100942

Procedure Notes: Pwr Step: 0 Antenna Position: Internal Accessory Model #: ???**Battery Model #: SNN5767A DEVICE POSITION (cheek or rotated): Cheek**

Communication System: GSM 1900; Frequency: 1880 MHz; Channel Number: 661; Duty Cycle: 1:8

Medium: Back-Up Glycol Head; Medium parameters used: $\sigma = 1.47$ mho/m, $\epsilon_r = 39$; $\rho = 1000$ kg/m³

DASY4 Configuration:

- Probe: ES3DV3 - SN3037; ConvF(5.16, 5.16, 5.16); Calibrated: 11/25/2004
- Sensor-Surface: 4mm (Mechanical Surface Detection)
- Electronics: DAE4 Sn376; Calibrated: 1/13/2005
- Phantom: R3 Glycol,Sugar SAM (extended range), Rev.1 (25-Mar-05); Type: SAM v4.0; Serial: TP-1159;
- Measurement SW: DASY4, V4.5 Build 19; Postprocessing SW: SEMCAD, V1.8 Build 147

Left Head Template/Zoom Scan (7x7x7)/Cube 0:

Measurement grid: dx=5mm, dy=5mm, dz=5mm

Reference Value = 12.2 V/m; Power Drift = -0.117 dB

Peak SAR (extrapolated) = 0.337 W/kg

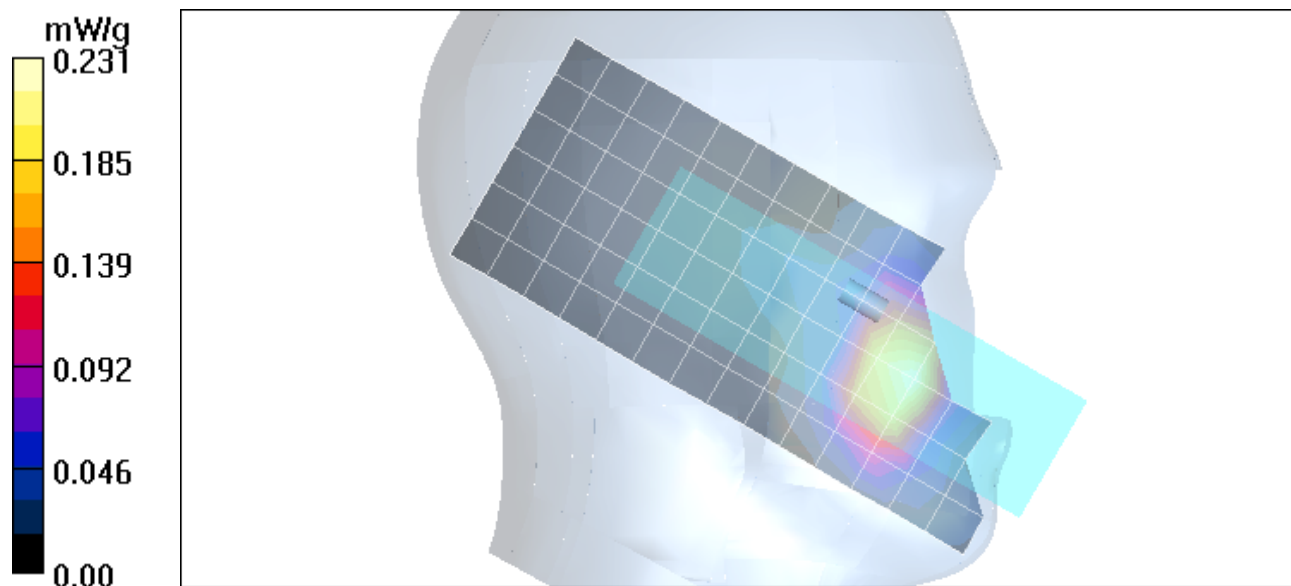
SAR(1 g) = 0.237 mW/g; SAR(10 g) = 0.149 mW/g

Maximum value of SAR (measured) = 0.251 mW/g

Left Head Template/Area Scan - Normal (15mm) (7x17x1):

Measurement grid: dx=15mm, dy=15mm

Maximum value of SAR (measured) = 0.231 mW/g



Date/Time: 6/22/2005 2:25:21 PM

Test Laboratory: Motorola

1900 RH Tilt ch 661

Serial: TA10100942

Procedure Notes: Pwr Step: 0 Antenna Position: Internal Accessory Model #: ???**Battery Model #: SNN5767A DEVICE POSITION (cheek or rotated): Rotated**

Communication System: GSM 1900; Frequency: 1880 MHz; Channel Number: 661; Duty Cycle: 1:8

Medium: Back-Up Glycol Head; Medium parameters used: $\sigma = 1.47$ mho/m, $\epsilon_r = 39$; $\rho = 1000$ kg/m³

DASY4 Configuration:

- Probe: ES3DV3 - SN3037; ConvF(5.16, 5.16, 5.16); Calibrated: 11/25/2004
- Sensor-Surface: 4mm (Mechanical Surface Detection)
- Electronics: DAE4 Sn376; Calibrated: 1/13/2005
- Phantom: R#3 Glycol,Sugar SAM (extended range), Rev.1 (25-Mar-05); Type: SAM v4.0; Serial: TP-1159;
- Measurement SW: DASY4, V4.5 Build 19; Postprocessing SW: SEMCAD, V1.8 Build 147

Right Head Template/Zoom Scan (7x7x7)/Cube 0:

Measurement grid: dx=5mm, dy=5mm, dz=5mm

Reference Value = 6.59 V/m; Power Drift = -0.146 dB

Peak SAR (extrapolated) = 0.083 W/kg

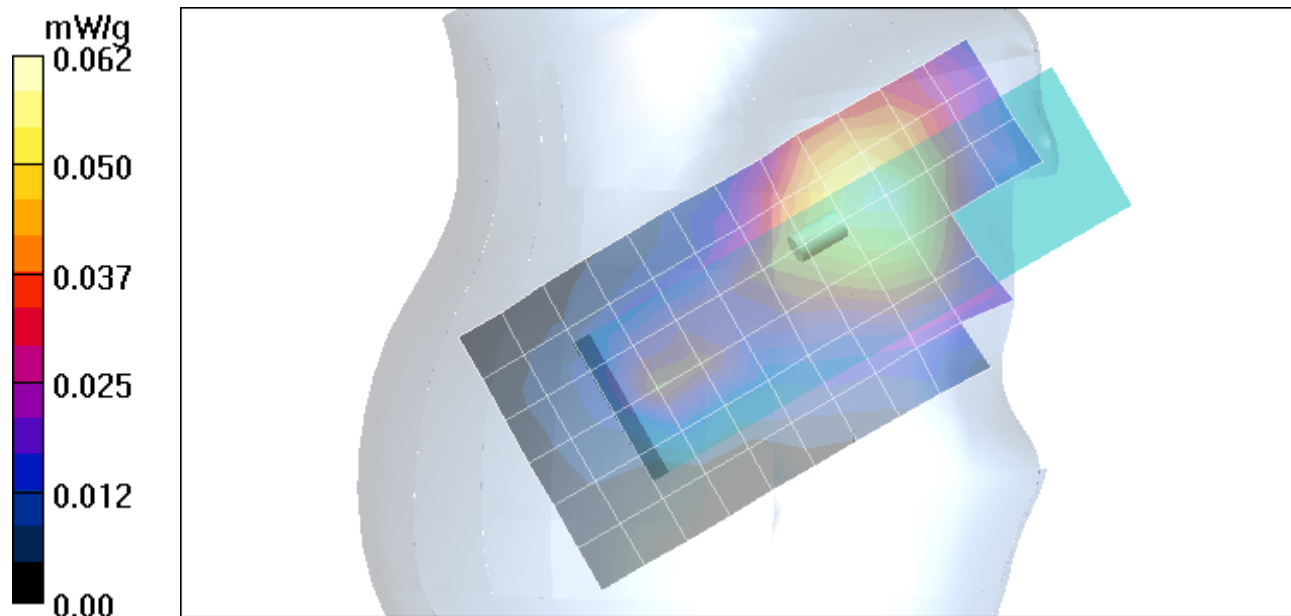
SAR(1 g) = 0.057 mW/g; SAR(10 g) = 0.038 mW/g

Maximum value of SAR (measured) = 0.061 mW/g

Right Head Template/Area Scan - Normal (15mm) (7x17x1):

Measurement grid: dx=15mm, dy=15mm

Maximum value of SAR (measured) = 0.062 mW/g



Appendix 3

SAR distribution plots for Body Worn Configuration

Date/Time: 6/22/2005 6:20:39 PM

Test Laboratory: Motorola

1900 BW Back 25mm GPRS ch661

Serial: TA10100942

Procedure Notes: Pwr Step: 0 OTA (GPRS) Antenna Position: INTERNAL**Battery Model #: SNN5767A Accessory Model # = Back of Phone 25mm Away from Flat Phantom**

Communication System: GPRS 1900 - Class 10; Frequency: 1880 MHz; Channel Number: 661; Duty Cycle: 1:4

Medium: Regular Glycol Body; Medium parameters used: $\sigma = 1.58$ mho/m, $\epsilon_r = 52.2$; $\rho = 1000$ kg/m³

DASY4 Configuration:

- Probe: ES3DV3 - SN3037; ConvF(4.71, 4.71, 4.71); Calibrated: 11/25/2004
- Sensor-Surface: 4mm (Mechanical Surface Detection)
- Electronics: DAE4 Sn376; Calibrated: 1/13/2005
- Phantom: R3: Sect.1, Amy Twin; Type: Amy Twin Flat; Serial: n/a;
- Measurement SW: DASY4, V4.5 Build 19; Postprocessing SW: SEMCAD, V1.8 Build 147

Amy Twin Phone Template/Zoom Scan (7x7x7)/Cube 0:

Measurement grid: dx=5mm, dy=5mm, dz=5mm

Reference Value = 12.5 V/m; Power Drift = -0.109 dB

Peak SAR (extrapolated) = 0.348 W/kg

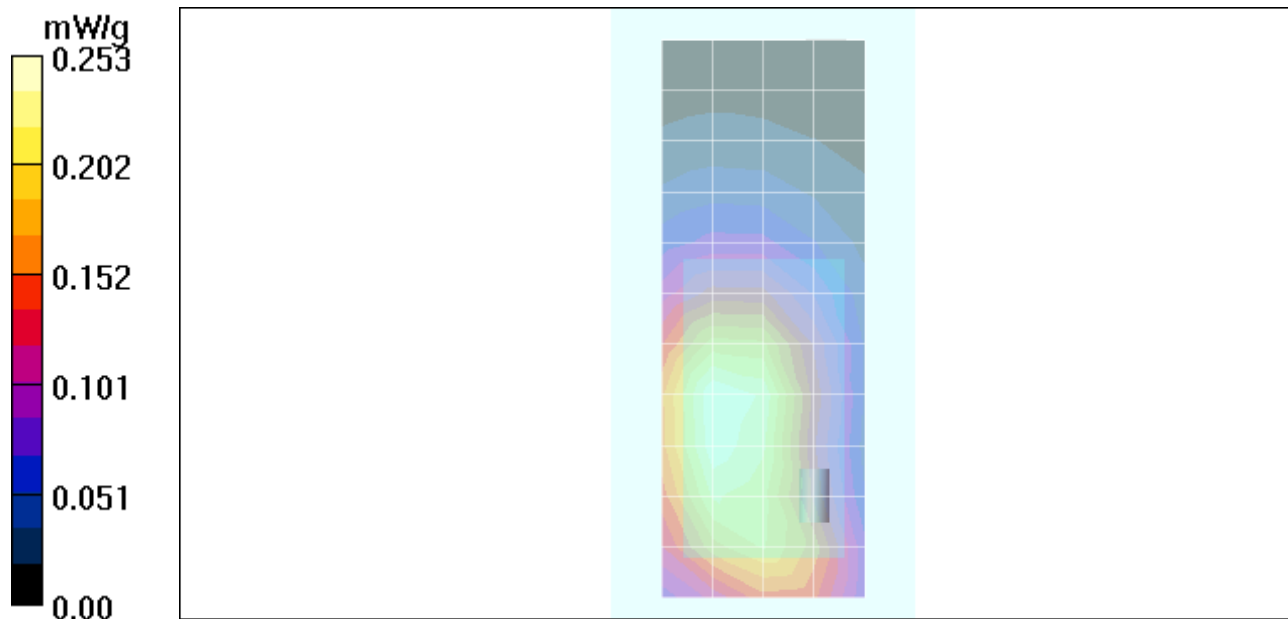
SAR(1 g) = 0.245 mW/g; SAR(10 g) = 0.162 mW/g

Maximum value of SAR (measured) = 0.263 mW/g

Amy Twin Phone Template/Area Scan - Normal Body (15mm) (13x7x1):

Measurement grid: dx=15mm, dy=15mm

Maximum value of SAR (measured) = 0.253 mW/g



Date/Time: 6/22/2005 6:43:36 PM

Test Laboratory: Motorola

1900 BW Back 25mm Edge ch661

Serial: TA10100942

Procedure Notes: Pwr Step: 2 OTA (EDGE) Antenna Position: INTERNAL**Battery Model #: SNN5767A Accessory Model # = Back of Phone 25mm Away from Flat Phantom**

Communication System: EDGE 1900 - Class 6; Frequency: 1880 MHz; Channel Number: 661; Duty Cycle: 1:4
Medium: Regular Glycol Body; Medium parameters used: $\sigma = 1.58$ mho/m, $\epsilon_r = 52.2$; $\rho = 1000$ kg/m³

DASY4 Configuration:

- Probe: ES3DV3 - SN3037; ConvF(4.71, 4.71, 4.71); Calibrated: 11/25/2004
- Sensor-Surface: 4mm (Mechanical Surface Detection)
- Electronics: DAE4 Sn376; Calibrated: 1/13/2005
- Phantom: R3: Sect.1, Amy Twin; Type: Amy Twin Flat; Serial: n/a;
- Measurement SW: DASY4, V4.5 Build 19; Postprocessing SW: SEMCAD, V1.8 Build 147

Amy Twin Phone Template/Zoom Scan (7x7x7)/Cube 0:

Measurement grid: dx=5mm, dy=5mm, dz=5mm

Reference Value = 7.63 V/m; Power Drift = -0.073 dB

Peak SAR (extrapolated) = 0.132 W/kg

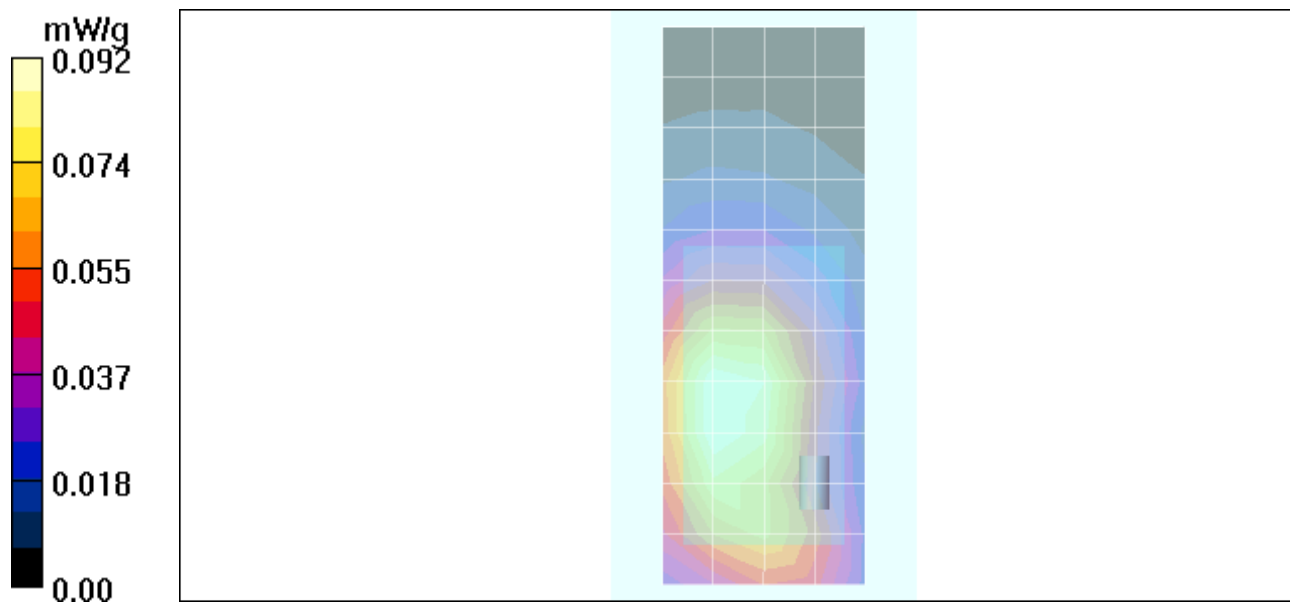
SAR(1 g) = 0.091 mW/g; SAR(10 g) = 0.060 mW/g

Maximum value of SAR (measured) = 0.098 mW/g

Amy Twin Phone Template/Area Scan - Normal Body (15mm) (13x7x1):

Measurement grid: dx=15mm, dy=15mm

Maximum value of SAR (measured) = 0.092 mW/g



Date/Time: 6/22/2005 5:19:13 PM

Test Laboratory: Motorola**1900 BW Back 15mm ch661**

Serial: TA10100942

Procedure Notes: Pwr Step: 0 OTA Antenna Position: INTERNAL**Battery Model #: SNN5767A Accessory Model # = Back of Phone 15mm Away from Flat Phantom**

Communication System: GSM 1900; Frequency: 1880 MHz; Channel Number: 661; Duty Cycle: 1:8

Medium: Regular Glycol Body; Medium parameters used: $\sigma = 1.58$ mho/m, $\epsilon_r = 52.2$; $\rho = 1000$ kg/m³

DASY4 Configuration:

- Probe: ES3DV3 - SN3037; ConvF(4.71, 4.71, 4.71); Calibrated: 11/25/2004
- Sensor-Surface: 4mm (Mechanical Surface Detection)
- Electronics: DAE4 Sn376; Calibrated: 1/13/2005
- Phantom: R3: Sect.1, Amy Twin; Type: Amy Twin Flat; Serial: n/a;
- Measurement SW: DASY4, V4.5 Build 19; Postprocessing SW: SEMCAD, V1.8 Build 147

Amy Twin Phone Template/Zoom Scan (7x7x7)/Cube 0:

Measurement grid: dx=5mm, dy=5mm, dz=5mm

Reference Value = 13.4 V/m; Power Drift = -0.067 dB

Peak SAR (extrapolated) = 0.413 W/kg

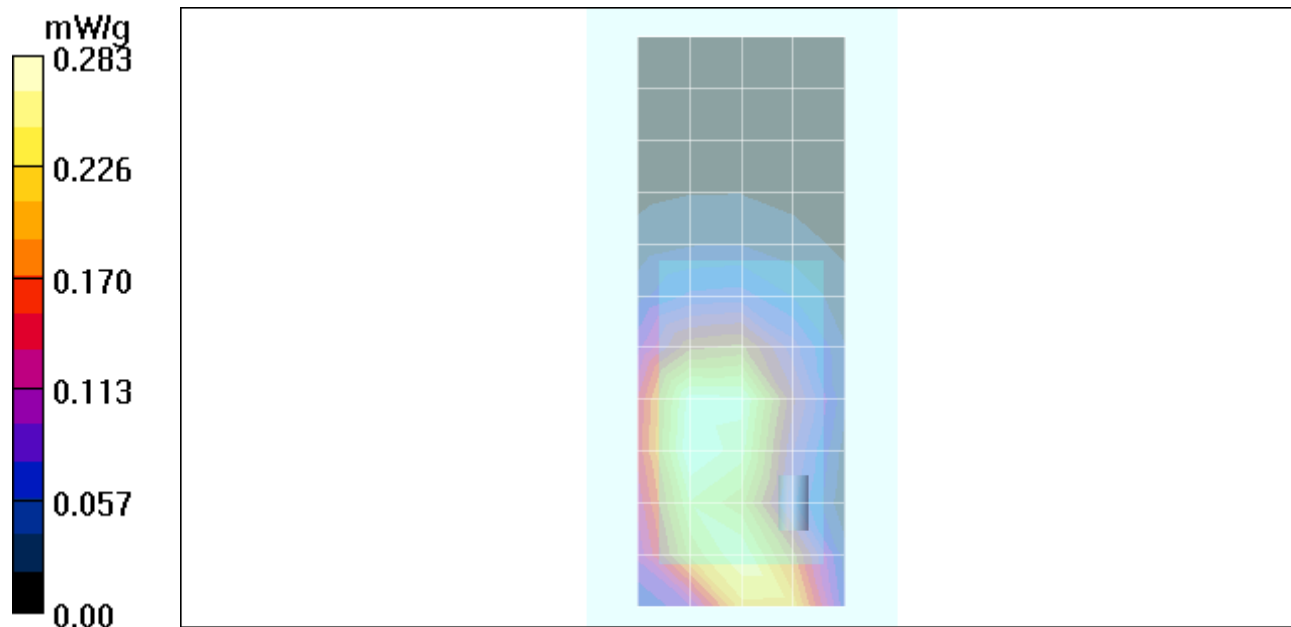
SAR(1 g) = 0.287 mW/g; SAR(10 g) = 0.185 mW/g

Maximum value of SAR (measured) = 0.310 mW/g

Amy Twin Phone Template/Area Scan - Normal Body (15mm) (13x7x1):

Measurement grid: dx=15mm, dy=15mm

Maximum value of SAR (measured) = 0.283 mW/g



Date/Time: 6/22/2005 5:54:01 PM

Test Laboratory: Motorola

1900 BW Back 15mm Bluetooth ch661

Serial: TA10100942

Procedure Notes: Pwr Step: 0 OTA (BLUETOOTH) Antenna Position: INTERNAL**Battery Model #: SNN5767A Accessory Model # = Back of Phone 15mm Away from Flat Phantom**

Communication System: GSM 1900; Frequency: 1880 MHz; Channel Number: 661; Duty Cycle: 1:8
Medium: Regular Glycol Body; Medium parameters used: $\sigma = 1.58$ mho/m, $\epsilon_r = 52.2$; $\rho = 1000$ kg/m³

DASY4 Configuration:

- Probe: ES3DV3 - SN3037; ConvF(4.71, 4.71, 4.71); Calibrated: 11/25/2004
- Sensor-Surface: 4mm (Mechanical Surface Detection)
- Electronics: DAE4 Sn376; Calibrated: 1/13/2005
- Phantom: R3: Sect.1, Amy Twin; Type: Amy Twin Flat; Serial: n/a;
- Measurement SW: DASY4, V4.5 Build 19; Postprocessing SW: SEMCAD, V1.8 Build 147

Amy Twin Phone Template/Zoom Scan (7x7x7)/Cube 0:

Measurement grid: dx=5mm, dy=5mm, dz=5mm

Reference Value = 15.4 V/m; Power Drift = -0.084 dB

Peak SAR (extrapolated) = 0.473 W/kg

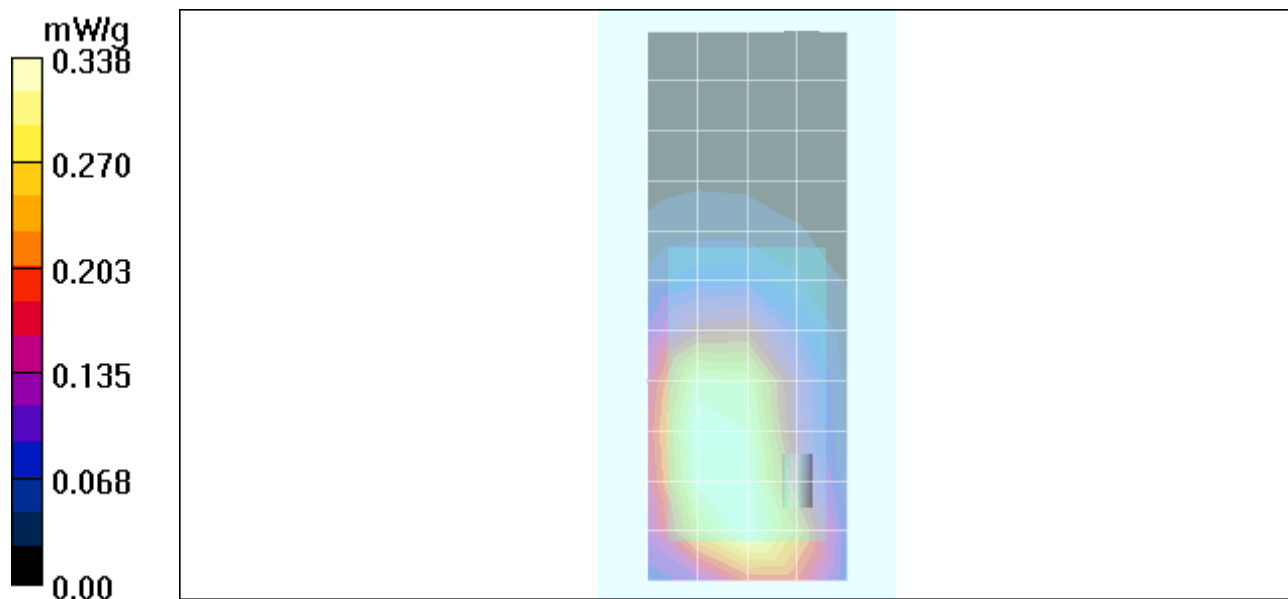
SAR(1 g) = 0.330 mW/g; SAR(10 g) = 0.216 mW/g

Maximum value of SAR (measured) = 0.358 mW/g

Amy Twin Phone Template/Area Scan - Normal Body (15mm) (13x7x1):

Measurement grid: dx=15mm, dy=15mm

Maximum value of SAR (measured) = 0.338 mW/g



Date/Time: 6/22/2005 7:17:01 PM

Test Laboratory: Motorola**1900 BW Back 15mm Bluetooth ch661 batt SNN5766A**

Serial: TA10100942

Procedure Notes: Pwr Step: 0 OTA (BLUETOOTH) Antenna Position: INTERNAL Battery Model #: SNN5766A Accessory Model # = Back of Phone 15mm Away from Flat Phantom

Communication System: GSM 1900; Frequency: 1880 MHz; Channel Number: 661; Duty Cycle: 1:8

Medium: Regular Glycol Body; Medium parameters used: $\sigma = 1.58$ mho/m, $\epsilon_r = 52.2$; $\rho = 1000$ kg/m³

DASY4 Configuration:

- Probe: ES3DV3 - SN3037; ConvF(4.71, 4.71, 4.71); Calibrated: 11/25/2004
- Sensor-Surface: 4mm (Mechanical Surface Detection)
- Electronics: DAE4 Sn376; Calibrated: 1/13/2005
- Phantom: R3: Sect.1, Amy Twin; Type: Amy Twin Flat; Serial: n/a;
- Measurement SW: DASY4, V4.5 Build 19; Postprocessing SW: SEMCAD, V1.8 Build 147

Amy Twin Phone Template/Zoom Scan (7x7x7)/Cube 0:

Measurement grid: dx=5mm, dy=5mm, dz=5mm

Reference Value = 17.1 V/m; Power Drift = -0.099 dB

Peak SAR (extrapolated) = 0.611 W/kg

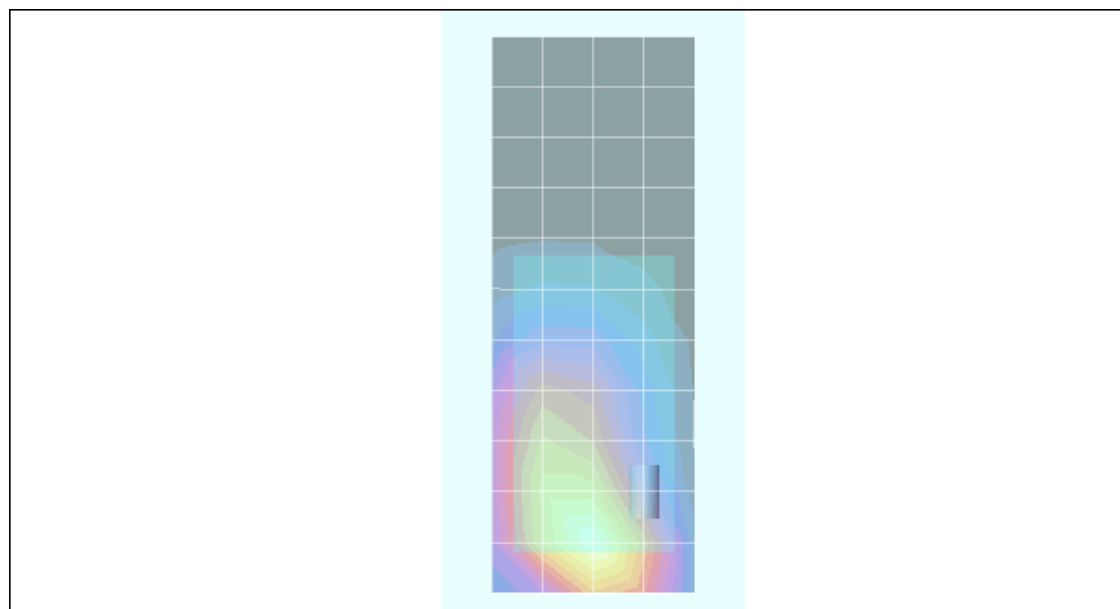
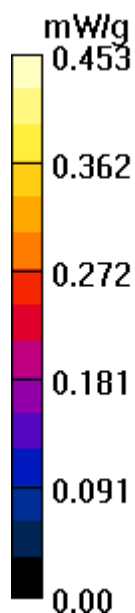
SAR(1 g) = 0.400 mW/g; SAR(10 g) = 0.249 mW/g

Maximum value of SAR (measured) = 0.432 mW/g

Amy Twin Phone Template/Area Scan - Normal Body (15mm) (13x7x1):

Measurement grid: dx=15mm, dy=15mm

Maximum value of SAR (measured) = 0.453 mW/g



Date/Time: 6/22/2005 4:56:35 PM

Test Laboratory: Motorola

1900 BW Front 15mm ch661

Serial: TA10100942

Procedure Notes: Pwr Step: 0 OTA Antenna Position: INTERNAL**Battery Model #: SNN5767A Accessory Model # = Front of Phone 15mm Away from Flat Phantom**

Communication System: GSM 1900; Frequency: 1880 MHz; Channel Number: 661; Duty Cycle: 1:8
Medium: Regular Glycol Body; Medium parameters used: $\sigma = 1.58$ mho/m, $\epsilon_r = 52.2$; $\rho = 1000$ kg/m³

DASY4 Configuration:

- Probe: ES3DV3 - SN3037; ConvF(4.71, 4.71, 4.71); Calibrated: 11/25/2004
- Sensor-Surface: 4mm (Mechanical Surface Detection)
- Electronics: DAE4 Sn376; Calibrated: 1/13/2005
- Phantom: R3: Sect.1, Amy Twin; Type: Amy Twin Flat; Serial: n/a;
- Measurement SW: DASY4, V4.5 Build 19; Postprocessing SW: SEMCAD, V1.8 Build 147

Amy Twin Phone Template/Zoom Scan (7x7x7)/Cube 0:

Measurement grid: dx=5mm, dy=5mm, dz=5mm

Reference Value = 10.0 V/m; Power Drift = -0.040 dB

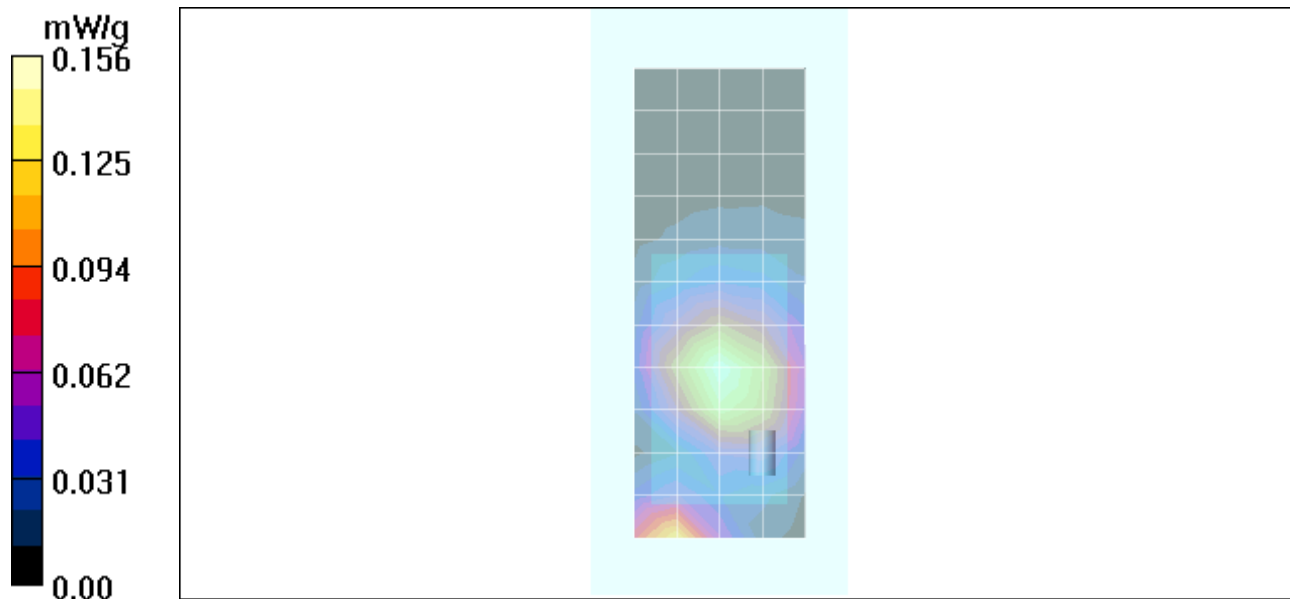
Peak SAR (extrapolated) = 0.208 W/kg

SAR(1 g) = 0.145 mW/g; SAR(10 g) = 0.092 mW/g

Maximum value of SAR (measured) = 0.156 mW/g

Amy Twin Phone Template/Area Scan - Normal Body (15mm) (13x7x1):

Measurement grid: dx=15mm, dy=15mm



Appendix 4

Probe Calibration Certificate



Accredited by the Swiss Federal Office of Metrology and Accreditation
The Swiss Accreditation Service is one of the signatories to the EA
Multilateral Agreement for the recognition of calibration certificates

Accreditation No.: **SCS 108**

Client **Motorola PCS**

Certificate No: **ES3-3037_Nov04**

CALIBRATION CERTIFICATE

Object **ES3DV3 - SN-3037**

Calibration procedure(s) **QA CAL-01 v5
Calibration procedure for dosimetric E-field probes**

Calibration date: **November 25, 2004**

Condition of the calibrated item **In Tolerance**

This calibration certificate documents the traceability to national standards, which realize the physical units of measurements (SI).
The measurements and the uncertainties with confidence probability are given on the following pages and are part of the certificate.

All calibrations have been conducted in the closed laboratory facility: environment temperature (22 ± 3)°C and humidity < 70%.

Calibration Equipment used (M&TE critical for calibration)

Primary Standards	ID #	Cal Date (Calibrated by, Certificate No.)	Scheduled Calibration
Power meter E4419B	GB41293874	5-May-04 (METAS, No. 251-00388)	May-05
Power sensor E4412A	MY41495277	5-May-04 (METAS, No. 251-00388)	May-05
Reference 3 dB Attenuator	SN: S5054 (3c)	10-Aug-04 (METAS, No. 251-00403)	Aug-05
Reference 20 dB Attenuator	SN: S5086 (20b)	3-May-04 (METAS, No. 251-00389)	May-05
Reference 30 dB Attenuator	SN: S5129 (30b)	10-Aug-04 (METAS, No. 251-00404)	Aug-05
Reference Probe ES3DV2	SN: 3013	8-Jan-04 (SPEAG, No. ES3-3013_Jan04)	Jan-05
DAE4	SN: 617	29-Sep-04 (SPEAG, No. DAE4-617_Sep04)	Sep-05

Secondary Standards	ID #	Check Date (in house)	Scheduled Check
Power sensor HP 8481A	MY41092180	18-Sep-02 (SPEAG, in house check Oct-03)	In house check: Oct 05
RF generator HP 8648C	US3642U01700	4-Aug-99 (SPEAG, in house check Dec-03)	In house check: Dec-05
Network Analyzer HP 8753E	US37390585	18-Oct-01 (SPEAG, in house check Nov-03)	In house check: Nov 04

	Name	Function	Signature
Calibrated by:	Nico Vetterli	Laboratory Technician	

	Name	Technical Manager	Signature
Approved by:	Katja Pokovic		

Issued: November 26, 2004

This calibration certificate shall not be reproduced except in full without written approval of the laboratory.



Accredited by the Swiss Federal Office of Metrology and Accreditation
 The Swiss Accreditation Service is one of the signatories to the EA
 Multilateral Agreement for the recognition of calibration certificates

Accreditation No.: **SCS 108**

Glossary:

TSL	tissue simulating liquid
NORM _{x,y,z}	sensitivity in free space
ConF	sensitivity in TSL / NORM _{x,y,z}
DCP	diode compression point
Polarization ϕ	ϕ rotation around probe axis
Polarization ϑ	ϑ rotation around an axis that is in the plane normal to probe axis (at measurement center), i.e., $\vartheta = 0$ is normal to probe axis

Calibration is Performed According to the Following Standards:

- IEEE Std 1528-2003, "IEEE Recommended Practice for Determining the Peak Spatial-Averaged Specific Absorption Rate (SAR) in the Human Head from Wireless Communications Devices: Measurement Techniques", December 2003
- CENELEC EN 50361, "Basic standard for the measurement of Specific Absorption Rate related to human exposure to electromagnetic fields from mobile phones (300 MHz - 3 GHz), July 2001

Methods Applied and Interpretation of Parameters:

- NORM_{x,y,z}:** Assessed for E-field polarization $\vartheta = 0$ ($f \leq 900$ MHz in TEM-cell; $f > 1800$ MHz: R22 waveguide). NORM_{x,y,z} are only intermediate values, i.e., the uncertainties of NORM_{x,y,z} does not effect the E^2 -field uncertainty inside TSL (see below *ConvF*).
- NORM(f)_{x,y,z} = NORM_{x,y,z} * frequency_response** (see Frequency Response Chart). This linearization is implemented in DASY4 software versions later than 4.2. The uncertainty of the frequency response is included in the stated uncertainty of *ConvF*.
- DCP_{x,y,z}:** DCP are numerical linearization parameters assessed based on the data of power sweep (no uncertainty required). DCP does not depend on frequency nor media.
- ConvF and Boundary Effect Parameters:** Assessed in flat phantom using E-field (or Temperature Transfer Standard for $f \leq 800$ MHz) and inside waveguide using analytical field distributions based on power measurements for $f > 800$ MHz. The same setups are used for assessment of the parameters applied for boundary compensation (alpha, depth) of which typical uncertainty values are given. These parameters are used in DASY4 software to improve probe accuracy close to the boundary. The sensitivity in TSL corresponds to NORM_{x,y,z} * *ConvF* whereby the uncertainty corresponds to that given for *ConvF*. A frequency dependent *ConvF* is used in DASY version 4.4 and higher which allows extending the validity from ± 50 MHz to ± 100 MHz.
- Spherical isotropy (3D deviation from isotropy):** in a field of low gradients realized using a flat phantom exposed by a patch antenna.
- Sensor Offset:** The sensor offset corresponds to the offset of virtual measurement center from the probe tip (on probe axis). No tolerance required.

Probe ES3DV3

SN:3037

Manufactured:	August 21, 2003
Last calibrated:	October 10, 2003
Recalibrated:	November 25, 2004

Calibrated for DASY Systems

(Note: non-compatible with DASY2 system!)

DASY - Parameters of Probe: ES3DV3 SN:3037

Sensitivity in Free Space^A

Diode Compression^B

NormX	1.15 ± 10.1%	$\mu\text{V}/(\text{V}/\text{m})^2$	DCP X	99 mV
NormY	0.84 ± 10.1%	$\mu\text{V}/(\text{V}/\text{m})^2$	DCP Y	99 mV
NormZ	0.94 ± 10.1%	$\mu\text{V}/(\text{V}/\text{m})^2$	DCP Z	99 mV

Sensitivity in Tissue Simulating Liquid (Conversion Factors)

Please see Page 8.

Boundary Effect

TSL **900 MHz** **Typical SAR gradient: 5 % per mm**

Sensor Center to Phantom Surface Distance		3.0 mm	4.0 mm
SAR _{be} [%]	Without Correction Algorithm	5.8	2.5
SAR _{be} [%]	With Correction Algorithm	0.0	0.1

TSL **1810 MHz** **Typical SAR gradient: 10 % per mm**

Sensor Center to Phantom Surface Distance		3.0 mm	4.0 mm
SAR _{be} [%]	Without Correction Algorithm	7.7	4.5
SAR _{be} [%]	With Correction Algorithm	0.1	0.3

Sensor Offset

Probe Tip to Sensor Center **2.0 mm**

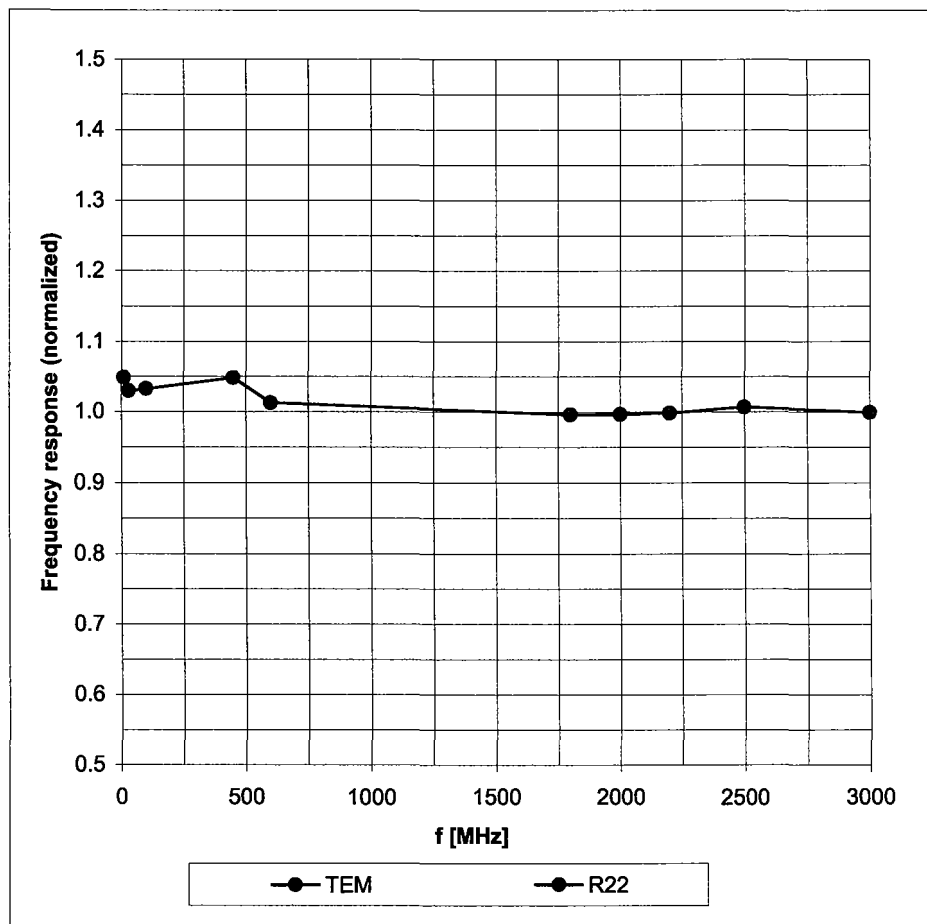
The reported uncertainty of measurement is stated as the standard uncertainty of measurement multiplied by the coverage factor k=2, which for a normal distribution corresponds to a coverage probability of approximately 95%.

^A The uncertainties of NormX,Y,Z do not affect the E²-field uncertainty inside TSL (see Page 8).

^B Numerical linearization parameter: uncertainty not required.

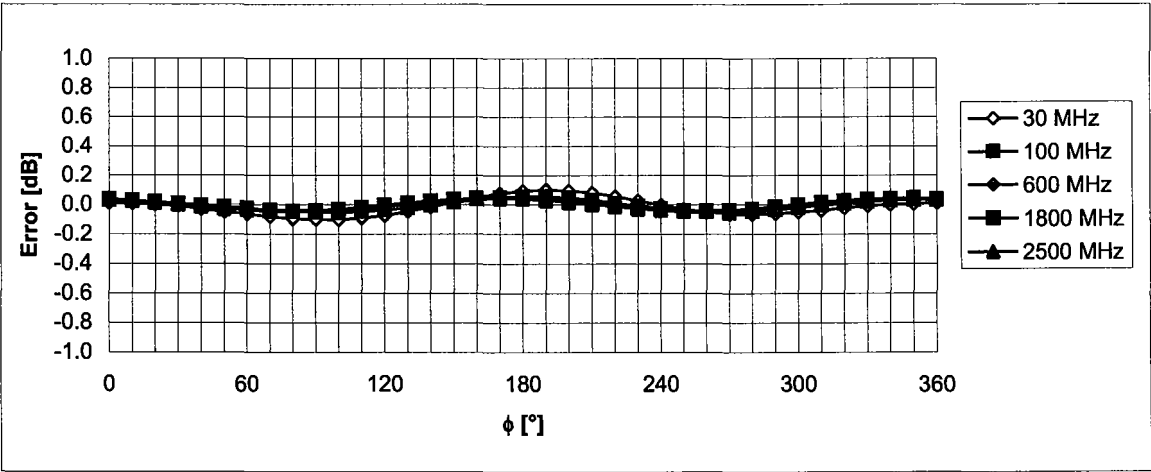
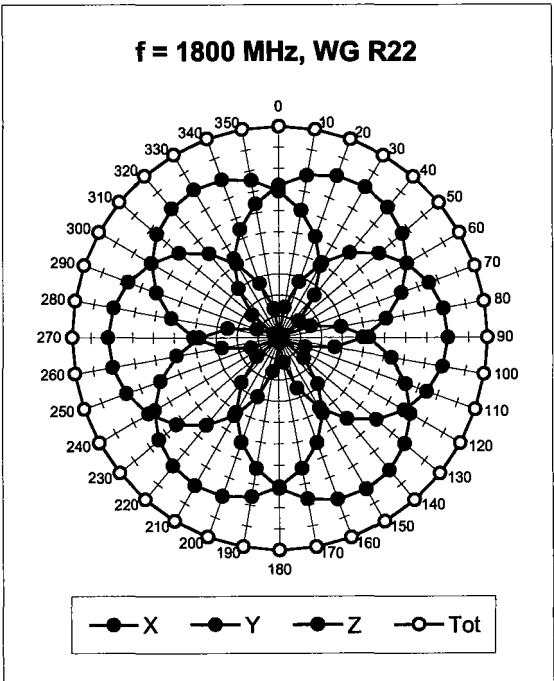
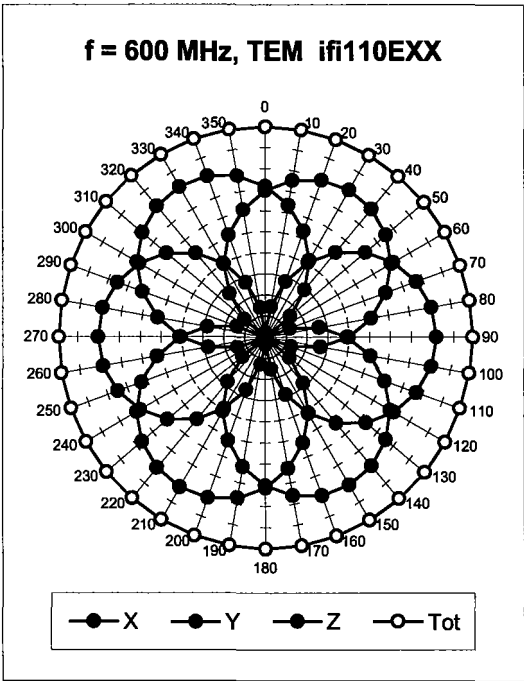
Frequency Response of E-Field

(TEM-Cell:ifi110 EXX, Waveguide: R22)



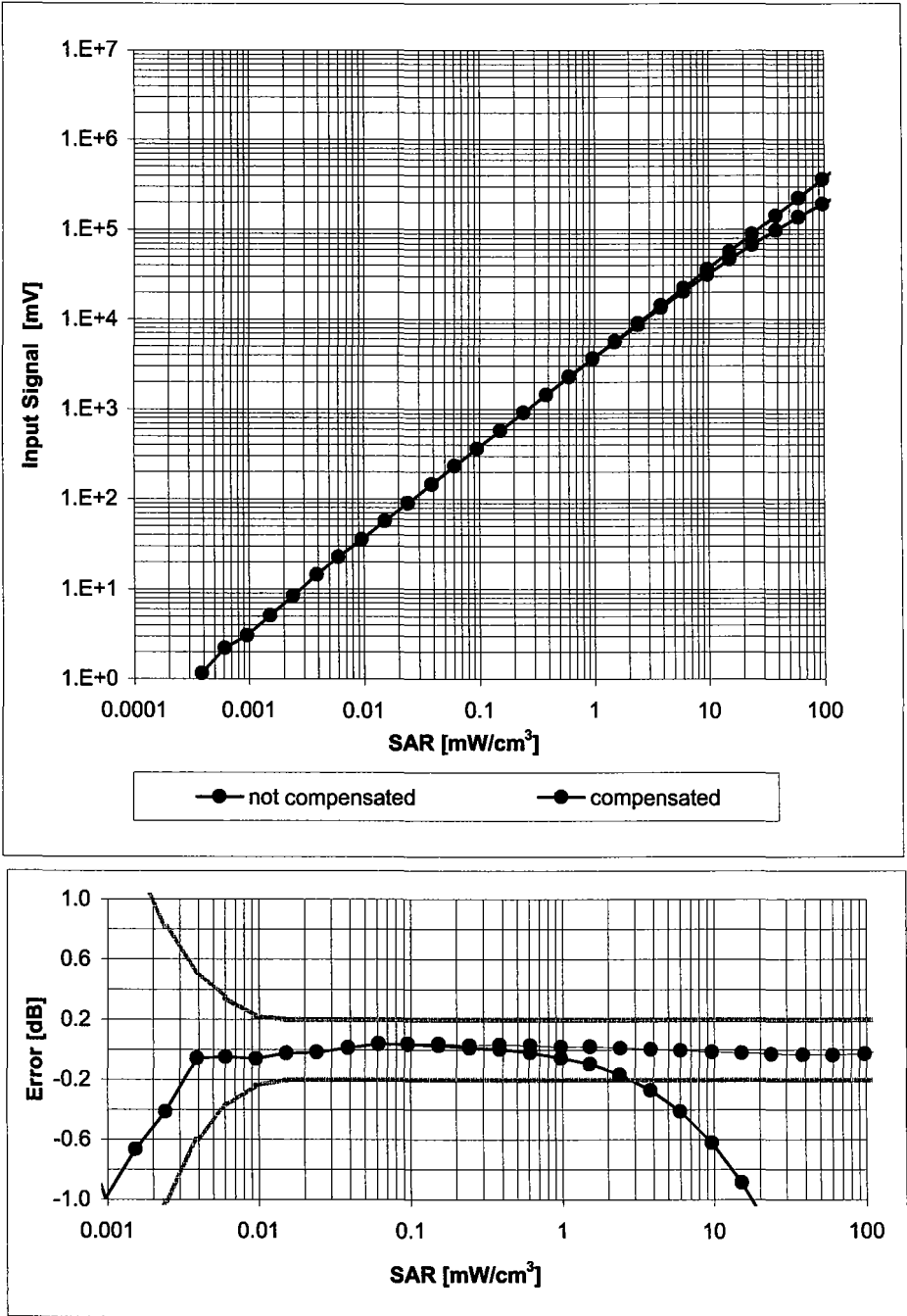
Uncertainty of Frequency Response of E-field: $\pm 6.3\%$ ($k=2$)

Receiving Pattern (ϕ), $\vartheta = 0^\circ$



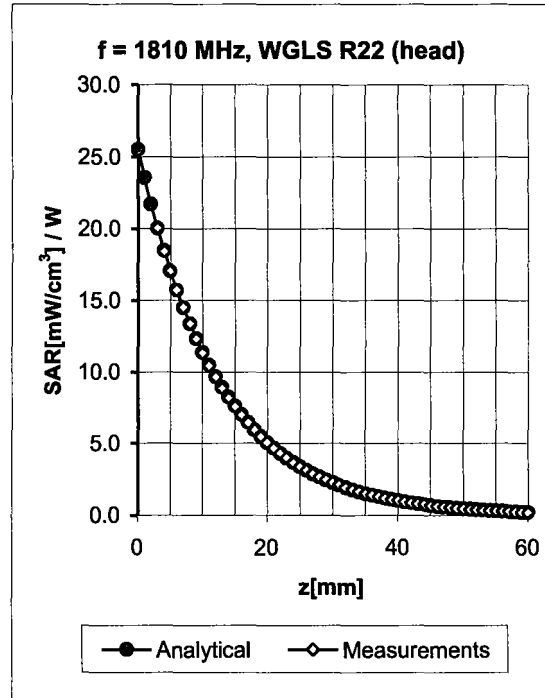
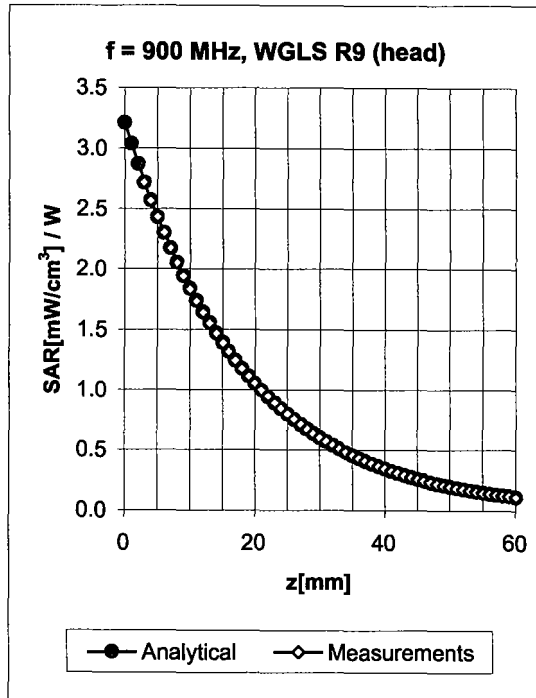
Uncertainty of Axial Isotropy Assessment: $\pm 0.5\%$ ($k=2$)

Dynamic Range $f(\text{SAR}_{\text{head}})$
(Waveguide R22, $f = 1800 \text{ MHz}$)



Uncertainty of Linearity Assessment: $\pm 0.6\%$ ($k=2$)

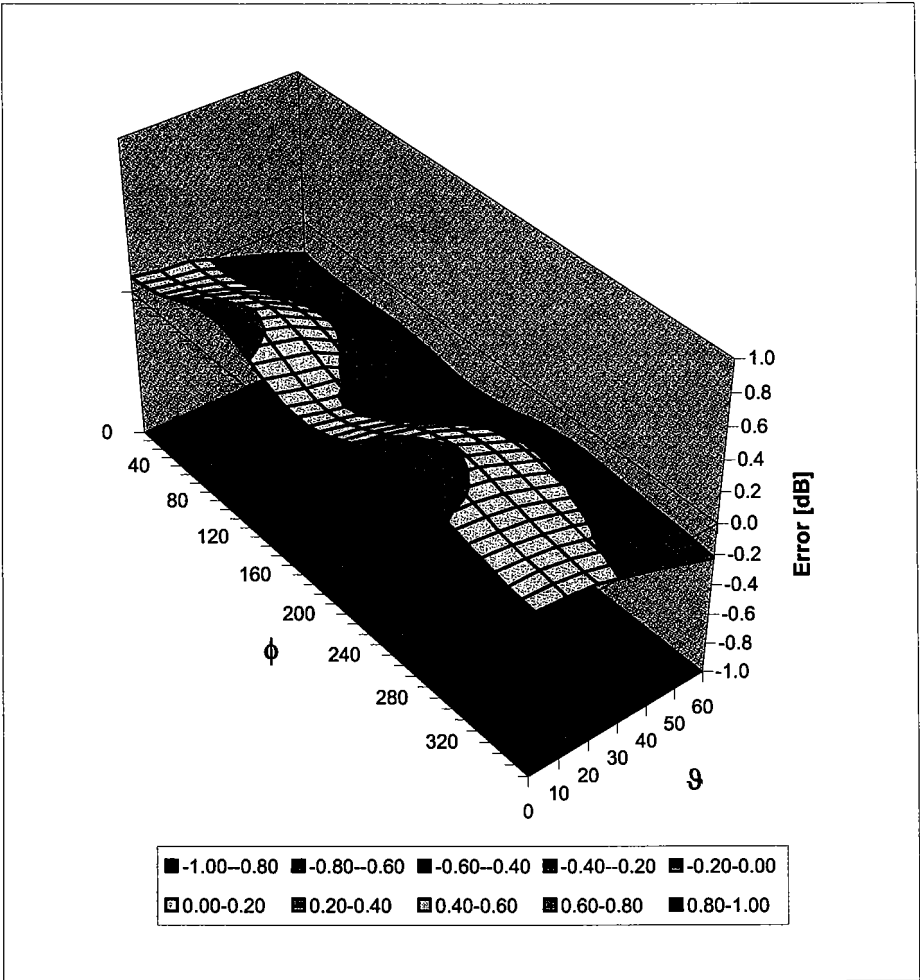
Conversion Factor Assessment



f [MHz]	Validity [MHz] ^c	TSL	Permittivity	Conductivity	Alpha	Depth	ConvF Uncertainty
900	± 50 / ± 100	Head	41.5 ± 5%	0.97 ± 5%	0.56	1.29	6.11 ± 11.0% (k=2)
1810	± 50 / ± 100	Head	40.0 ± 5%	1.40 ± 5%	0.25	2.34	5.16 ± 11.0% (k=2)
1950	± 50 / ± 100	Head	40.0 ± 5%	1.40 ± 5%	0.28	2.26	4.77 ± 11.0% (k=2)
900	± 50 / ± 100	Body	55.0 ± 5%	1.05 ± 5%	0.66	1.23	6.00 ± 11.0% (k=2)
1810	± 50 / ± 100	Body	53.3 ± 5%	1.52 ± 5%	0.23	3.26	4.71 ± 11.0% (k=2)
1950	± 50 / ± 100	Body	53.3 ± 5%	1.52 ± 5%	0.32	2.16	4.56 ± 11.0% (k=2)

^c The validity of ± 100 MHz only applies for DASY v4.4 and higher (see Page 2). The uncertainty is the RSS of the ConvF uncertainty at calibration frequency and the uncertainty for the indicated frequency band.

Deviation from Isotropy in HSL
Error (ϕ , ϑ), $f = 900 \text{ MHz}$



Uncertainty of Spherical Isotropy Assessment: $\pm 2.6\%$ ($k=2$)

Appendix 5
Measurement Uncertainty Budget

Uncertainty Budget for Device Under Test: 30 – 3000 MHz

<i>a</i>	<i>b</i>	<i>c</i>	<i>d</i>	<i>e = f(d,k)</i>	<i>f</i>	<i>g</i>	<i>h = c x f / e</i>	<i>i = c x g / e</i>	<i>k</i>
Uncertainty Component	IEEE 1528 section	Tol. (± %)	Prob Dist	Div.	<i>c_i</i> (1 g)	<i>c_i</i> (10 g)	1 g <i>u_i</i> (±%)	10 g <i>u_i</i> (±%)	<i>v_i</i>
Measurement System									
Probe Calibration	E.2.1	5.9	N	1.00	1	1	5.9	5.9	∞
Axial Isotropy	E.2.2	4.7	R	1.73	0.707	0.707	1.9	1.9	∞
Hemispherical Isotropy	E.2.2	9.6	R	1.73	0.707	0.707	3.9	3.9	∞
Boundary Effect	E.2.3	1.0	R	1.73	1	1	0.6	0.6	∞
Linearity	E.2.4	4.7	R	1.73	1	1	2.7	2.7	∞
System Detection Limits	E.2.5	1.0	R	1.73	1	1	0.6	0.6	∞
Readout Electronics	E.2.6	0.3	N	1.00	1	1	0.3	0.3	∞
Response Time	E.2.7	1.1	R	1.73	1	1	0.6	0.6	∞
Integration Time	E.2.8	1.1	R	1.73	1	1	0.6	0.6	∞
RF Ambient Conditions - Noise	E.6.1	3.0	R	1.73	1	1	1.7	1.7	∞
RF Ambient Conditions - Reflections	E.6.1	0.0	R	1.73	1	1	0.0	0.0	∞
Probe Positioner Mech. Tolerance	E.6.2	0.4	R	1.73	1	1	0.2	0.2	∞
Probe Positioning w.r.t Phantom	E.6.3	1.4	R	1.73	1	1	0.8	0.8	∞
Max. SAR Evaluation (ext., int., avg.)	E.5	3.4	R	1.73	1	1	2.0	2.0	∞
Test sample Related									
Test Sample Positioning	E.4.2	3.2	N	1.00	1	1	3.2	3.2	29
Device Holder Uncertainty	E.4.1	4.0	N	1.00	1	1	4.0	4.0	8
SAR drift	6.6.2	5.0	R	1.73	1	1	2.9	2.9	∞
Phantom and Tissue Parameters									
Phantom Uncertainty	E.3.1	4.0	R	1.73	1	1	2.3	2.3	∞
Liquid Conductivity (target)	E.3.2	5.0	R	1.73	0.64	0.43	1.8	1.2	∞
Liquid Conductivity (measurement)	E.3.3	3.3	N	1.00	0.64	0.43	2.1	1.4	∞
Liquid Permittivity (target)	E.3.2	5.0	R	1.73	0.6	0.49	1.7	1.4	∞
Liquid Permittivity (measurement)	E.3.3	1.9	N	1.00	0.6	0.49	1.1	0.9	∞
Combined Standard Uncertainty			RSS				11.1	10.8	411
Expanded Uncertainty (95% CONFIDENCE LEVEL)			<i>k</i> =2				22.2	21.6	

Uncertainty Budget for System Check: 30 – 3000 MHz

<i>a</i>	<i>b</i>	<i>c</i>	<i>d</i>	<i>e = f(d,k)</i>	<i>f</i>	<i>g</i>	<i>h = c x f / e</i>	<i>i = c x g / e</i>	<i>k</i>
Uncertainty Component	IEEE 1528 section	Tol. (± %)	Prob. Dist.	Div.	<i>c_i</i> (1 g)	<i>c_i</i> (10 g)	1 g <i>u_i</i> (±%)	10 g <i>u_i</i> (±%)	<i>v_i</i>
Measurement System									
Probe Calibration	E.2.1	5.9	N	1.00	1	1	5.9	5.9	∞
Axial Isotropy	E.2.2	4.7	R	1.73	1	1	2.7	2.7	∞
Spherical Isotropy	E.2.2	9.6	R	1.73	0	0	0.0	0.0	∞
Boundary Effect	E.2.3	1.0	R	1.73	1	1	0.6	0.6	∞
Linearity	E.2.4	4.7	R	1.73	1	1	2.7	2.7	∞
System Detection Limits	E.2.5	1.0	R	1.73	1	1	0.6	0.6	∞
Readout Electronics	E.2.6	0.3	N	1.00	1	1	0.3	0.3	∞
Response Time	E.2.7	1.1	R	1.73	1	1	0.6	0.6	∞
Integration Time	E.2.8	0.0	R	1.73	1	1	0.0	0.0	∞
RF Ambient Conditions - Noise	E.6.1	3.0	R	1.73	1	1	1.7	1.7	∞
RF Ambient Conditions - Reflections	E.6.1	0.0	R	1.73	1	1	0.0	0.0	∞
Probe Positioner Mechanical Tolerance	E.6.2	0.4	R	1.73	1	1	0.2	0.2	∞
Probe Positioning w.r.t. Phantom	E.6.3	1.4	R	1.73	1	1	0.8	0.8	∞
Max. SAR Evaluation (ext., int., avg.)	E.5	3.4	R	1.73	1	1	2.0	2.0	∞
Dipole									
Dipole Axis to Liquid Distance	⁸ , E.4.2	2.0	R	1.73	1	1	1.2	1.2	∞
Input Power and SAR Drift Measurement	⁸ , 6.6.2	5.0	R	1.73	1	1	2.9	2.9	∞
Phantom and Tissue Parameters									
Phantom Uncertainty	E.3.1	4.0	R	1.73	1	1	2.3	2.3	∞
Liquid Conductivity (target)	E.3.2	5.0	R	1.73	0.64	0.43	1.8	1.2	∞
Liquid Conductivity (measurement)	E.3.3	3.3	R	1.73	0.64	0.43	1.2	0.8	∞
Liquid Permittivity (target)	E.3.2	5.0	R	1.73	0.6	0.49	1.7	1.4	∞
Liquid Permittivity (measurement)	E.3.3	1.9	R	1.73	0.6	0.49	0.6	0.5	∞
Combined Standard Uncertainty			RSS				9.0	8.8	9999 9
Expanded Uncertainty (95% CONFIDENCE LEVEL)			<i>k</i> =2				17.7	17.3	

Appendix 6

Photographs of the device under test



Figure 1. Front of Phone



Figure 2. Back of Phone



Figure 3. Phone open



Figure 4. Body Worn

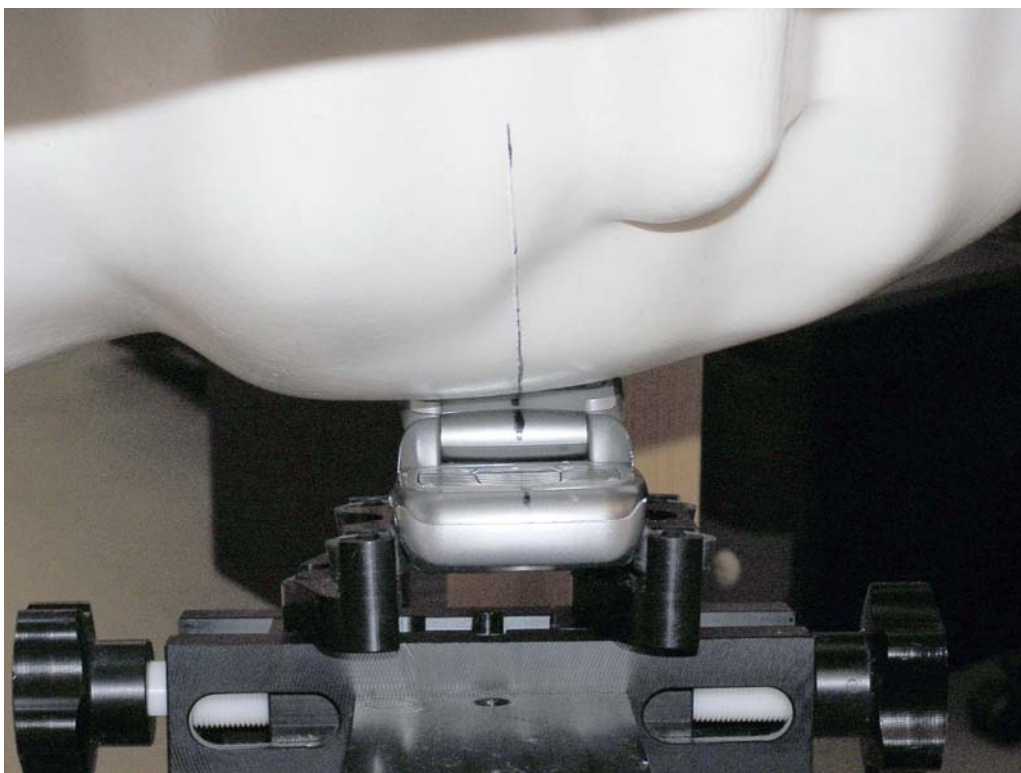


Figure 5. Cheek/Touch Position, front view



Figure 6. Cheek/Touch Position, rear view

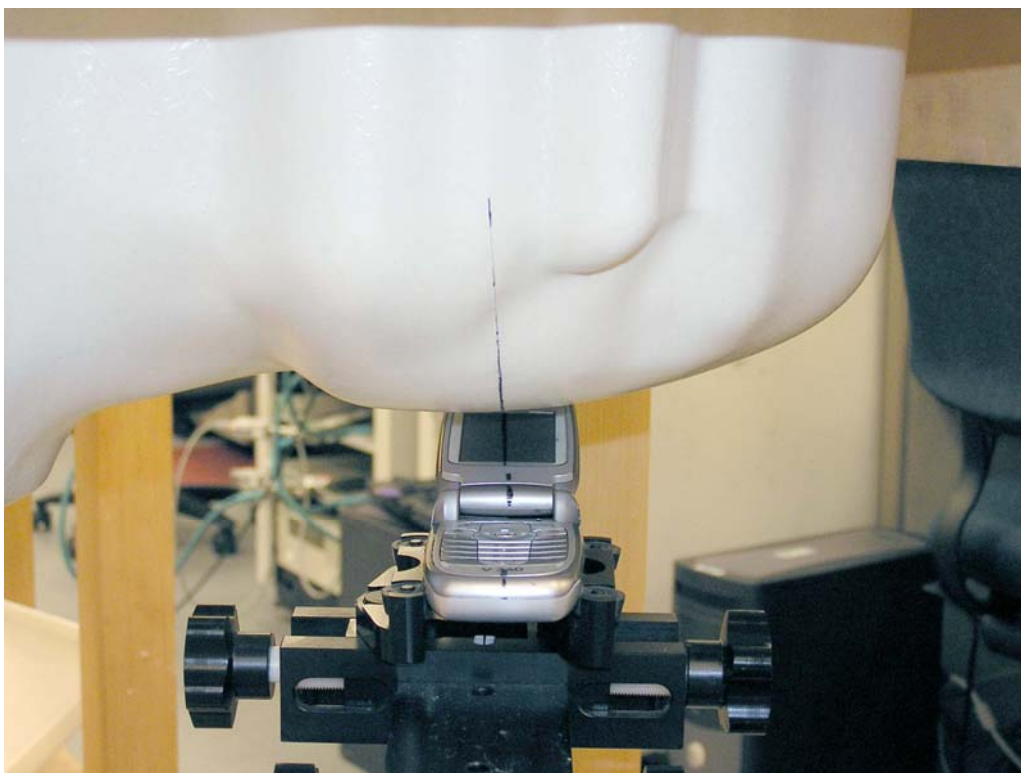


Figure 7. Tilt Position, front view

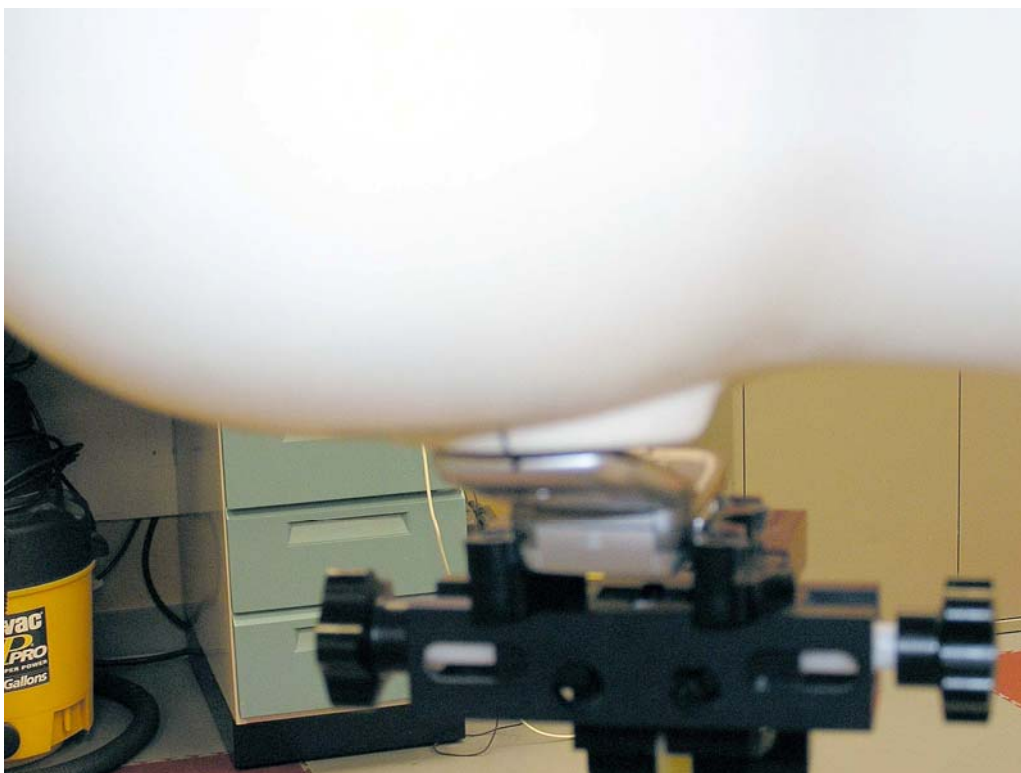


Figure 8. Tilt Position, rear view