

12_LTE Band 7_20M_QPSK_1RB_0Offset_Right Tilted_Ch21350

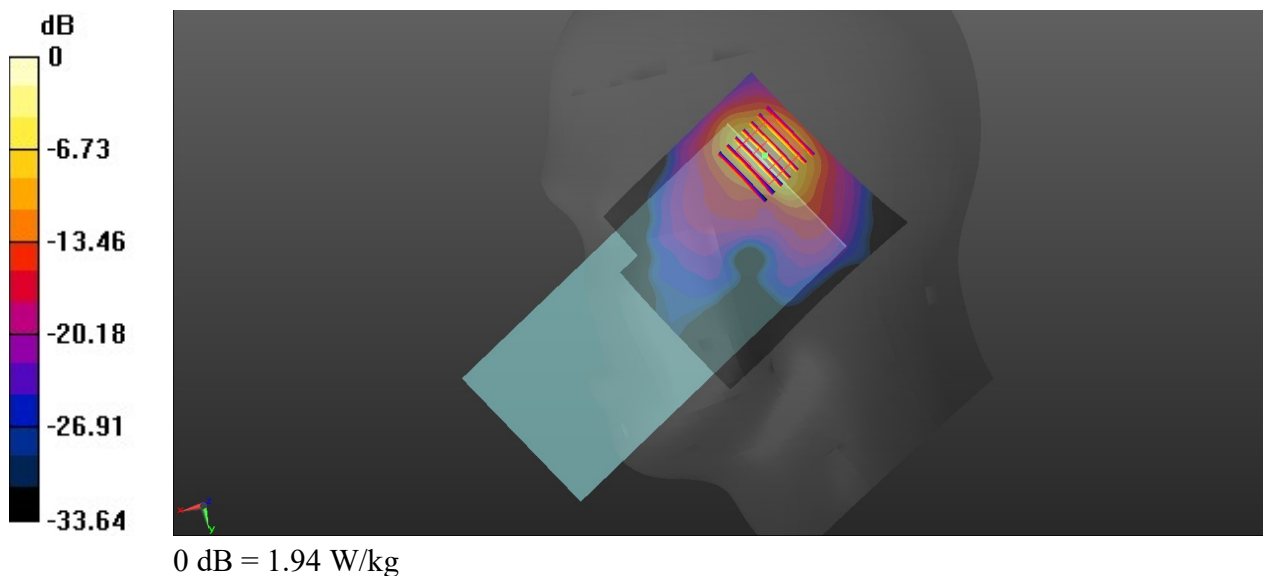
Communication System: UID 0, LTE (0); Frequency: 2560 MHz; Duty Cycle: 1:1
Medium: HSL_2600_210706 Medium parameters used: $f = 2560$ MHz; $\sigma = 1.944$ S/m; $\epsilon_r = 38.479$;
 $\rho = 1000$ kg/m³
Ambient Temperature : 23.4 °C; Liquid Temperature : 22.6 °C

DASY5 Configuration:

- Probe: EX3DV4 - SN7641; ConvF(7.94, 7.94, 7.94); Calibrated: 2021/3/15
- Sensor-Surface: 1.4mm (Mechanical Surface Detection)
- Electronics: DAE4 Sn715; Calibrated: 2020/7/27
- Phantom: Twin-SAM1(P1aP2a20); Type: QD 000 P40 CD; Serial: TP:1670
- Measurement SW: DASY52, Version 52.10 (3); SEMCAD X Version 14.6.13 (7474)

Ch21350/Area Scan (81x91x1): Interpolated grid: dx=1.200 mm, dy=1.200 mm
Maximum value of SAR (interpolated) = 2.00 W/kg

Ch21350/Zoom Scan (7x7x7)/Cube 0: Measurement grid: dx=5mm, dy=5mm, dz=5mm
Reference Value = 15.32 V/m; Power Drift = 0.13 dB
Peak SAR (extrapolated) = 2.57 W/kg
SAR(1 g) = 1.01 W/kg; SAR(10 g) = 0.377 W/kg
Maximum value of SAR (measured) = 1.94 W/kg



13_LTE Band 41_20M_QPSK_1RB_0Offset_Right Tilted_Ch41490

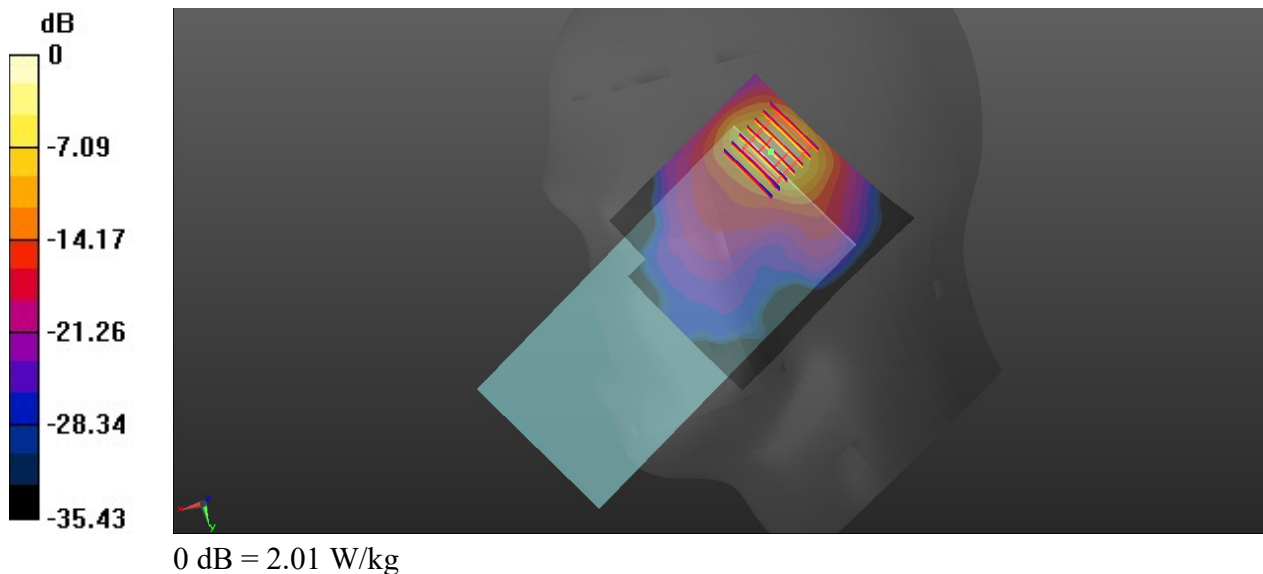
Communication System: UID 0, LTE (0); Frequency: 2680 MHz; Duty Cycle: 1:2.331
Medium: HSL_2600_210706 Medium parameters used: $f = 2680$ MHz; $\sigma = 2.056$ S/m; $\epsilon_r = 37.972$;
 $\rho = 1000$ kg/m³
Ambient Temperature : 23.4 °C; Liquid Temperature : 22.6 °C

DASY5 Configuration:

- Probe: EX3DV4 - SN7641; ConvF(7.94, 7.94, 7.94); Calibrated: 2021/3/15
- Sensor-Surface: 1.4mm (Mechanical Surface Detection)
- Electronics: DAE4 Sn715; Calibrated: 2020/7/27
- Phantom: Twin-SAM1(P1aP2a20); Type: QD 000 P40 CD; Serial: TP:1670
- Measurement SW: DASY52, Version 52.10 (3); SEMCAD X Version 14.6.13 (7474)

Ch41490/Area Scan (81x91x1): Interpolated grid: dx=1.200 mm, dy=1.200 mm
Maximum value of SAR (interpolated) = 1.98 W/kg

Ch41490/Zoom Scan (7x7x7)/Cube 0: Measurement grid: dx=5mm, dy=5mm, dz=5mm
Reference Value = 10.25 V/m; Power Drift = 0.12 dB
Peak SAR (extrapolated) = 2.67 W/kg
SAR(1 g) = 1.06 W/kg; SAR(10 g) = 0.400 W/kg
Maximum value of SAR (measured) = 2.01 W/kg



14_WLAN2.4GHz_802.11b 1Mbps_Left Cheek_Ch11

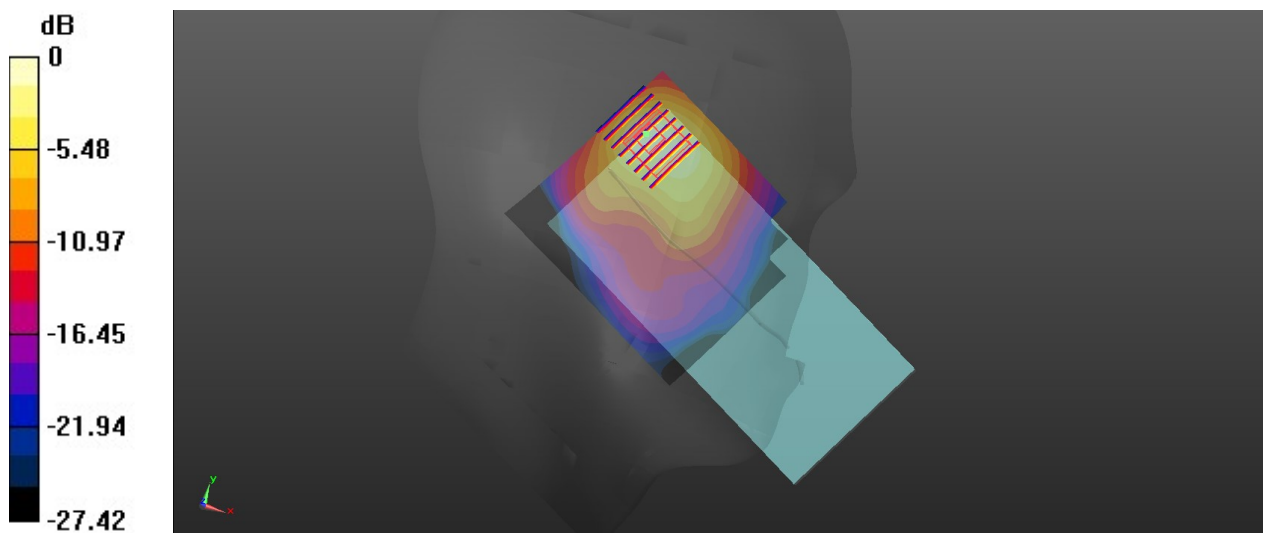
Communication System: UID 0, WIFI (0); Frequency: 2462 MHz; Duty Cycle: 1:1
Medium: HSL_2450_210705 Medium parameters used: $f = 2462$ MHz; $\sigma = 1.833$ S/m; $\epsilon_r = 39.712$;
 $\rho = 1000$ kg/m³
Ambient Temperature : 23.7 °C; Liquid Temperature : 22.8 °C

DASY5 Configuration:

- Probe: EX3DV4 - SN7641; ConvF(8.29, 8.29, 8.29); Calibrated: 2021/3/15
- Sensor-Surface: 1.4mm (Mechanical Surface Detection)
- Electronics: DAE4 Sn715; Calibrated: 2020/7/27
- Phantom: Twin-SAM1(P1aP2a20); Type: QD 000 P40 CD; Serial: TP:1670
- Measurement SW: DASY52, Version 52.10 (3); SEMCAD X Version 14.6.13 (7474)

Ch11/Area Scan (81x91x1): Interpolated grid: dx=1.200 mm, dy=1.200 mm
Maximum value of SAR (interpolated) = 1.35 W/kg

Ch11/Zoom Scan (7x8x7)/Cube 0: Measurement grid: dx=5mm, dy=5mm, dz=5mm
Reference Value = 12.05 V/m; Power Drift = -0.18 dB
Peak SAR (extrapolated) = 1.83 W/kg
SAR(1 g) = 0.728 W/kg; SAR(10 g) = 0.338 W/kg
Maximum value of SAR (measured) = 1.35 W/kg



0 dB = 1.35 W/kg

15_Bluetooth_DH5 1Mbps_Left Cheek_Ch78

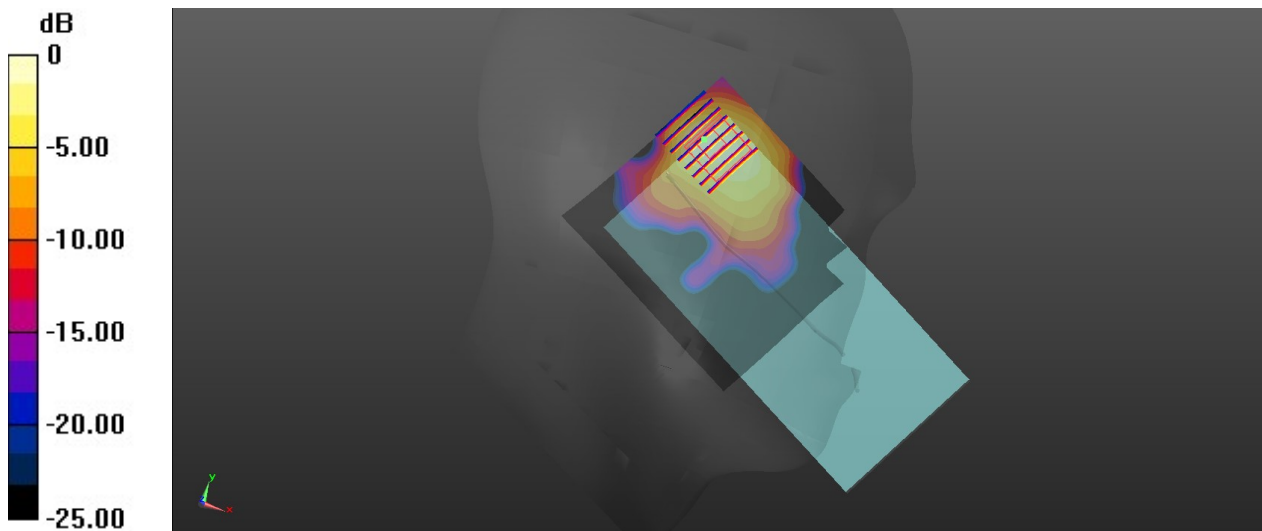
Communication System: UID 0, Bluetooth (0); Frequency: 2480 MHz;Duty Cycle: 1:1.304
Medium: HSL_2450_210705 Medium parameters used: $f = 2480$ MHz; $\sigma = 1.855$ S/m; $\epsilon_r = 39.637$;
 $\rho = 1000$ kg/m³
Ambient Temperature : 23.7 °C; Liquid Temperature : 22.8 °C

DASY5 Configuration:

- Probe: EX3DV4 - SN7641; ConvF(8.29, 8.29, 8.29); Calibrated: 2021/3/15
- Sensor-Surface: 1.4mm (Mechanical Surface Detection)
- Electronics: DAE4 Sn715; Calibrated: 2020/7/27
- Phantom: Twin-SAM1(P1aP2a20); Type: QD 000 P40 CD; Serial: TP:1670
- Measurement SW: DASY52, Version 52.10 (3); SEMCAD X Version 14.6.13 (7474)

Ch78/Area Scan (81x91x1): Interpolated grid: dx=1.200 mm, dy=1.200 mm
Maximum value of SAR (interpolated) = 0.0830 W/kg

Ch78/Zoom Scan (7x8x7)/Cube 0: Measurement grid: dx=5mm, dy=5mm, dz=5mm
Reference Value = 2.729 V/m; Power Drift = 0.12 dB
Peak SAR (extrapolated) = 0.110 W/kg
SAR(1 g) = 0.045 W/kg; SAR(10 g) = 0.021 W/kg
Maximum value of SAR (measured) = 0.0810 W/kg



0 dB = 0.0810 W/kg

16_WLAN5GHz_802.11ac-VHT80 MCS0_Left Cheek_Ch58

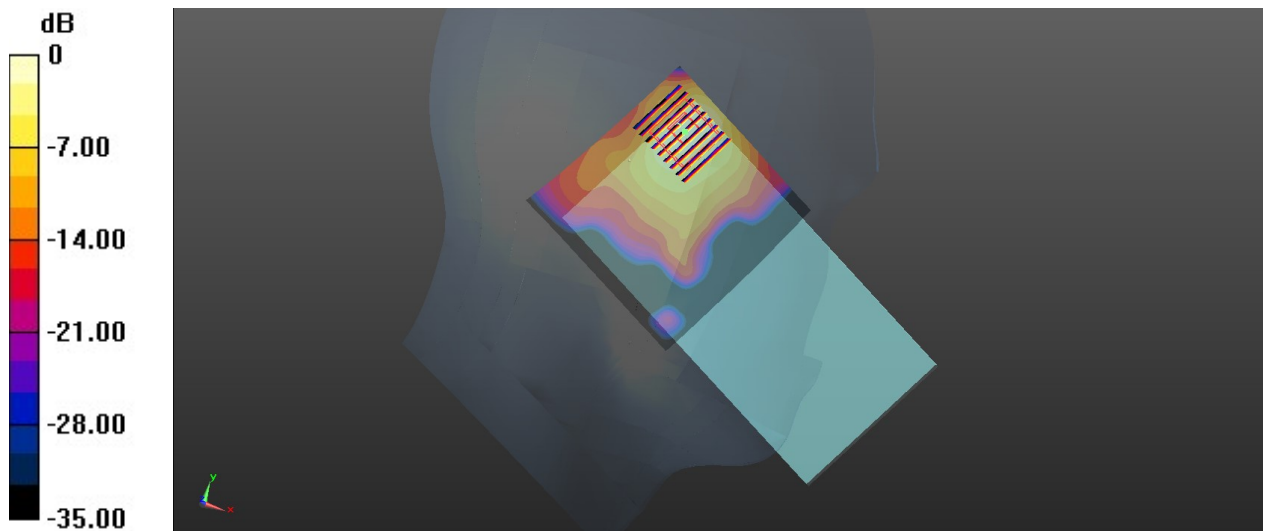
Communication System: UID 0, WIFI (0); Frequency: 5290 MHz; Duty Cycle: 1:1
Medium: HSL_5250_210714 Medium parameters used: $f = 5290$ MHz; $\sigma = 4.809$ S/m; $\epsilon_r = 36.869$;
 $\rho = 1000$ kg/m³
Ambient Temperature : 23.4 °C; Liquid Temperature : 22.8 °C

DASY5 Configuration:

- Probe: EX3DV4 - SN7641; ConvF(5.68, 5.68, 5.68); Calibrated: 2021/3/15
- Sensor-Surface: 1.4mm (Mechanical Surface Detection)
- Electronics: DAE4 Sn715; Calibrated: 2020/7/27
- Phantom: Twin-SAM1(P1aP2a20); Type: QD 000 P40 CD; Serial: TP:1670
- Measurement SW: DASY52, Version 52.10 (3); SEMCAD X Version 14.6.13 (7474)

Ch58/Area Scan (91x91x1): Interpolated grid: dx=1.000 mm, dy=1.000 mm
Maximum value of SAR (interpolated) = 1.75 W/kg

Ch58/Zoom Scan (8x9x7)/Cube 0: Measurement grid: dx=4mm, dy=4mm, dz=1.4mm
Reference Value = 5.644 V/m; Power Drift = 0.19 dB
Peak SAR (extrapolated) = 2.89 W/kg
SAR(1 g) = 0.753 W/kg; SAR(10 g) = 0.268 W/kg
Maximum value of SAR (measured) = 1.74 W/kg



0 dB = 1.74 W/kg

17_WLAN5GHz_802.11ac-VHT80 MCS0_Left Cheek_Ch106

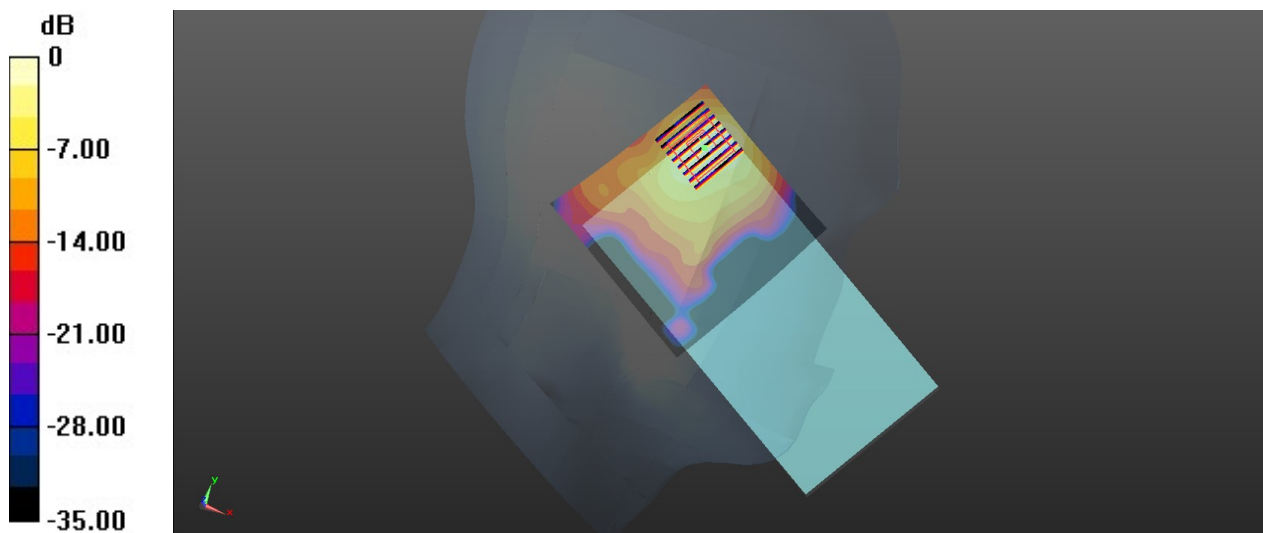
Communication System: UID 0, WIFI (0); Frequency: 5530 MHz; Duty Cycle: 1:1
Medium: HSL_5600_210716 Medium parameters used: $f = 5530$ MHz; $\sigma = 5.101$ S/m; $\epsilon_r = 36.349$;
 $\rho = 1000$ kg/m³
Ambient Temperature : 23.3 °C; Liquid Temperature : 22.7 °C

DASY5 Configuration:

- Probe: EX3DV4 - SN7641; ConvF(5.03, 5.03, 5.03); Calibrated: 2021/3/15
- Sensor-Surface: 1.4mm (Mechanical Surface Detection)
- Electronics: DAE4 Sn715; Calibrated: 2020/7/27
- Phantom: Twin-SAM1(P1aP2a20); Type: QD 000 P40 CD; Serial: TP:1670
- Measurement SW: DASY52, Version 52.10 (3); SEMCAD X Version 14.6.13 (7474)

Ch106/Area Scan (91x91x1): Interpolated grid: dx=1.000 mm, dy=1.000 mm
Maximum value of SAR (interpolated) = 1.65 W/kg

Ch106/Zoom Scan (8x8x7)/Cube 0: Measurement grid: dx=4mm, dy=4mm, dz=1.4mm
Reference Value = 7.409 V/m; Power Drift = -0.14 dB
Peak SAR (extrapolated) = 2.61 W/kg
SAR(1 g) = 0.689 W/kg; SAR(10 g) = 0.243 W/kg
Maximum value of SAR (measured) = 1.61 W/kg



0 dB = 1.61 W/kg

18_WLAN5GHz_802.11ac-VHT80 MCS0_Left Cheek_Ch155

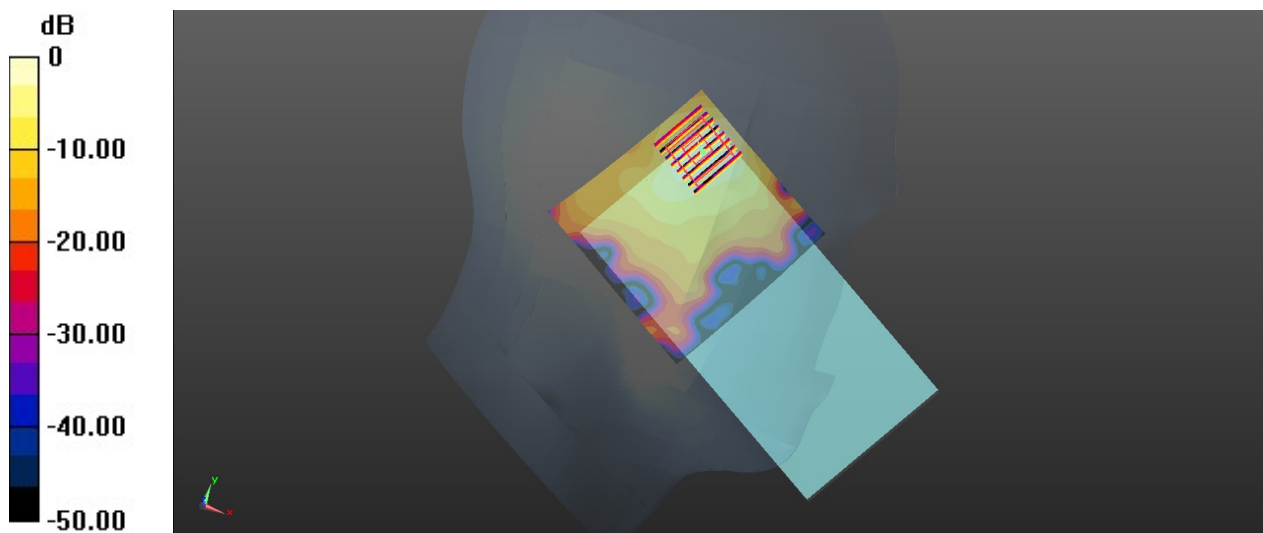
Communication System: UID 0, WIFI (0); Frequency: 5775 MHz; Duty Cycle: 1:1
Medium: HSL_5750_210719 Medium parameters used: $f = 5775$ MHz; $\sigma = 5.396$ S/m; $\epsilon_r = 35.832$;
 $\rho = 1000$ kg/m³
Ambient Temperature : 23.5 °C; Liquid Temperature : 22.6 °C

DASY5 Configuration:

- Probe: EX3DV4 - SN7641; ConvF(5.3, 5.3, 5.3); Calibrated: 2021/3/15
- Sensor-Surface: 1.4mm (Mechanical Surface Detection)
- Electronics: DAE4 Sn715; Calibrated: 2020/7/27
- Phantom: Twin-SAM1(P1aP2a20); Type: QD 000 P40 CD; Serial: TP:1670
- Measurement SW: DASY52, Version 52.10 (3); SEMCAD X Version 14.6.13 (7474)

Ch155/Area Scan (91x91x1): Interpolated grid: dx=1.000 mm, dy=1.000 mm
Maximum value of SAR (interpolated) = 1.56 W/kg

Ch155/Zoom Scan (8x8x7)/Cube 0: Measurement grid: dx=4mm, dy=4mm, dz=1.4mm
Reference Value = 7.731 V/m; Power Drift = -0.08 dB
Peak SAR (extrapolated) = 2.57 W/kg
SAR(1 g) = 0.642 W/kg; SAR(10 g) = 0.226 W/kg
Maximum value of SAR (measured) = 1.54 W/kg



0 dB = 1.54 W/kg

19_GSM850_GPRS (4 Tx slots)_Back_5mm_Ch251

Communication System: UID 0, GPRS/EDGE12 (0); Frequency: 848.8 MHz; Duty Cycle: 1:2.08
Medium: HSL_835_210702 Medium parameters used: $f = 849$ MHz; $\sigma = 0.884$ S/m; $\epsilon_r = 41.566$; $\rho = 1000$ kg/m³

Ambient Temperature : 23.5 °C; Liquid Temperature : 22.5 °C

DASY5 Configuration:

- Probe: EX3DV4 - SN7641; ConvF(10.9, 10.9, 10.9); Calibrated: 2021/3/15
- Sensor-Surface: 1.4mm (Mechanical Surface Detection)
- Electronics: DAE4 Sn715; Calibrated: 2020/7/27
- Phantom: Twin-SAM1(P1aP2a20); Type: QD 000 P40 CD; Serial: TP:1670
- Measurement SW: DASY52, Version 52.10 (3); SEMCAD X Version 14.6.13 (7474)

Ch251/Area Scan (71x131x1): Interpolated grid: dx=1.500 mm, dy=1.500 mm

Maximum value of SAR (interpolated) = 1.48 W/kg

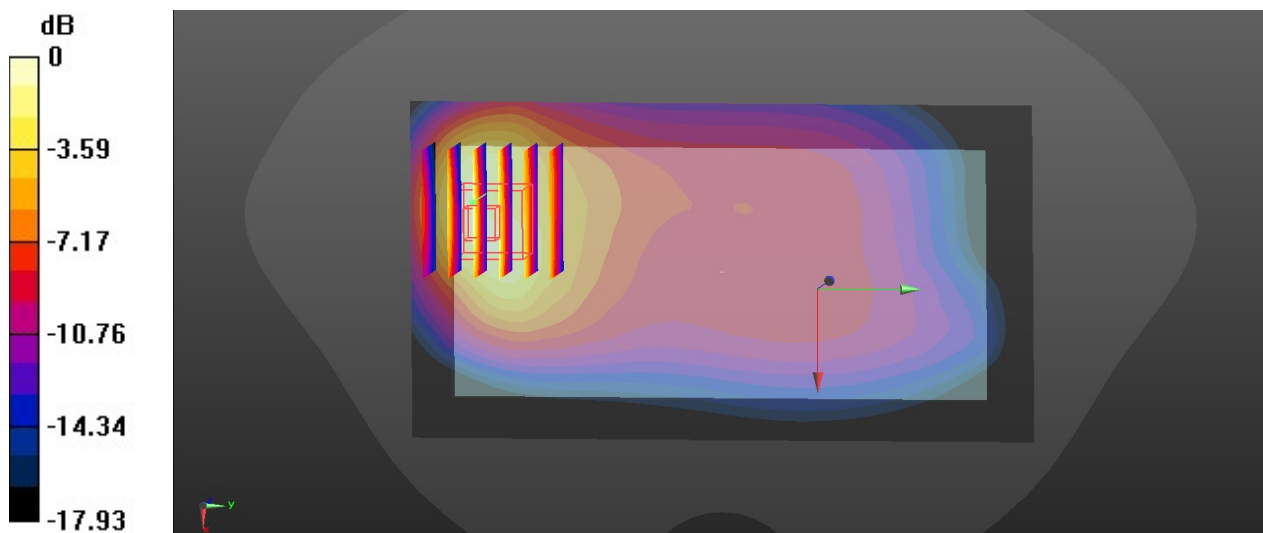
Ch251/Zoom Scan (6x6x7)/Cube 0: Measurement grid: dx=8mm, dy=8mm, dz=5mm

Reference Value = 1.953 V/m; Power Drift = 0.12 dB

Peak SAR (extrapolated) = 2.05 W/kg

SAR(1 g) = 1.04 W/kg; SAR(10 g) = 0.572 W/kg

Maximum value of SAR (measured) = 1.63 W/kg



0 dB = 1.63 W/kg

20_GSM1900_GPRS(4 Tx slots)_Back_5mm_Ch810

Communication System: UID 0, GPRS/EDGE12 (0); Frequency: 1909.8 MHz; Duty Cycle: 1:2.08
Medium: HSL_1900_210704 Medium parameters used: $f = 1910$ MHz; $\sigma = 1.459$ S/m; $\epsilon_r = 39.967$;
 $\rho = 1000$ kg/m³

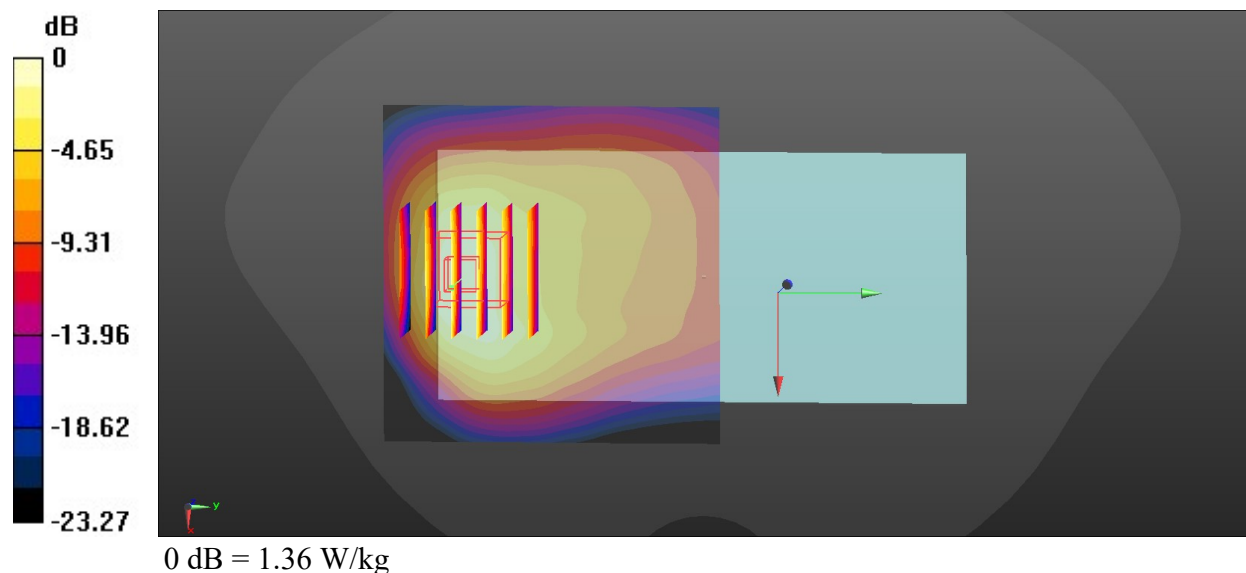
Ambient Temperature : 23.5 °C; Liquid Temperature : 22.7 °C

DASY5 Configuration:

- Probe: EX3DV4 - SN7641; ConvF(9.05, 9.05, 9.05); Calibrated: 2021/3/15
- Sensor-Surface: 1.4mm (Mechanical Surface Detection)
- Electronics: DAE4 Sn715; Calibrated: 2020/7/27
- Phantom: Twin-SAM1(P1aP2a20); Type: QD 000 P40 CD; Serial: TP:1670
- Measurement SW: DASY52, Version 52.10 (3); SEMCAD X Version 14.6.13 (7474)

Ch810/Area Scan (71x71x1): Interpolated grid: dx=1.500 mm, dy=1.500 mm
Maximum value of SAR (interpolated) = 1.42 W/kg

Ch810/Zoom Scan (6x6x7)/Cube 0: Measurement grid: dx=8mm, dy=8mm, dz=5mm
Reference Value = 10.43 V/m; Power Drift = 0.15 dB
Peak SAR (extrapolated) = 1.69 W/kg
SAR(1 g) = 0.897 W/kg; SAR(10 g) = 0.490 W/kg
Maximum value of SAR (measured) = 1.36 W/kg



21_WCDMA V_RMC 12.2Kbps_Back_5mm_Ch4182

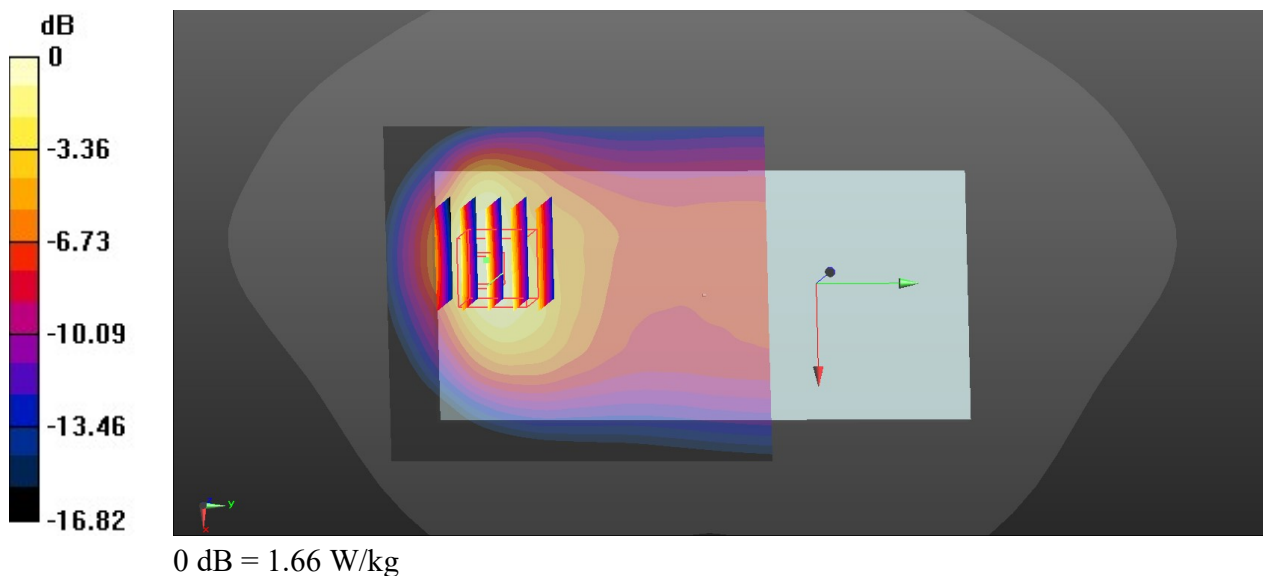
Communication System: UID 0, UMTS (0); Frequency: 836.4 MHz; Duty Cycle: 1:1
 Medium: HSL_835_210702 Medium parameters used: $f = 836.4$ MHz; $\sigma = 0.888$ S/m;
 $\epsilon_r = 41.979$; $\rho = 1000$ kg/m³
 Ambient Temperature : 23.5 °C; Liquid Temperature : 22.5 °C

DASY5 Configuration:

- Probe: EX3DV4 - SN7641; ConvF(10.9, 10.9, 10.9); Calibrated: 2021/3/15
- Sensor-Surface: 1.4mm (Mechanical Surface Detection)
- Electronics: DAE4 Sn715; Calibrated: 2020/7/27
- Phantom: Twin-SAM1(P1aP2a20); Type: QD 000 P40 CD; Serial: TP:1670
- Measurement SW: DASY52, Version 52.10 (3); SEMCAD X Version 14.6.13 (7474)

Ch4182/Area Scan (71x81x1): Interpolated grid: dx=1.500 mm, dy=1.500 mm
 Maximum value of SAR (interpolated) = 1.79 W/kg

Ch4182/Zoom Scan (5x5x7)/Cube 0: Measurement grid: dx=8mm, dy=8mm, dz=5mm
 Reference Value = 1.851 V/m; Power Drift = -0.04 dB
 Peak SAR (extrapolated) = 2.04 W/kg
SAR(1 g) = 1.06 W/kg; SAR(10 g) = 0.586 W/kg
 Maximum value of SAR (measured) = 1.66 W/kg



22_WCDMA IV_RMC 12.2Kbps_Bottom Side_5mm_Ch1312

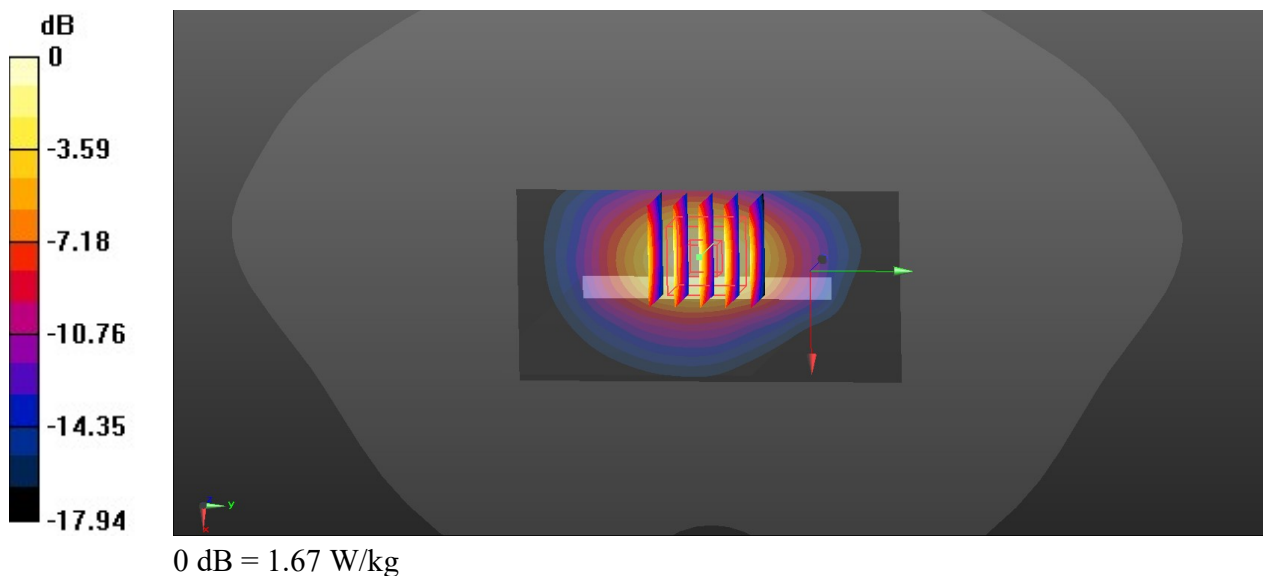
Communication System: UID 0, UMTS (0); Frequency: 1712.4 MHz; Duty Cycle: 1:1
Medium: HSL_1750_210703 Medium parameters used: $f = 1712.4$ MHz; $\sigma = 1.352$ S/m; $\epsilon_r = 39.769$; $\rho = 1000$ kg/m³
Ambient Temperature : 23.6 °C; Liquid Temperature : 22.4 °C

DASY5 Configuration:

- Probe: EX3DV4 - SN7641; ConvF(9.41, 9.41, 9.41); Calibrated: 2021/3/15
- Sensor-Surface: 1.4mm (Mechanical Surface Detection)
- Electronics: DAE4 Sn715; Calibrated: 2020/7/27
- Phantom: Twin-SAM1(P1aP2a20); Type: QD 000 P40 CD; Serial: TP:1670
- Measurement SW: DASY52, Version 52.10 (3); SEMCAD X Version 14.6.13 (7474)

Ch1312/Area Scan (41x81x1): Interpolated grid: dx=1.500 mm, dy=1.500 mm
Maximum value of SAR (interpolated) = 1.68 W/kg

Ch1312/Zoom Scan (5x5x7)/Cube 0: Measurement grid: dx=8mm, dy=8mm, dz=5mm
Reference Value = 0.9010 V/m; Power Drift = 0.10 dB
Peak SAR (extrapolated) = 1.98 W/kg
SAR(1 g) = 1.09 W/kg; SAR(10 g) = 0.583 W/kg
Maximum value of SAR (measured) = 1.67 W/kg



23_WCDMA II_RMC 12.2Kbps_Bottom Side_5mm_Ch9538

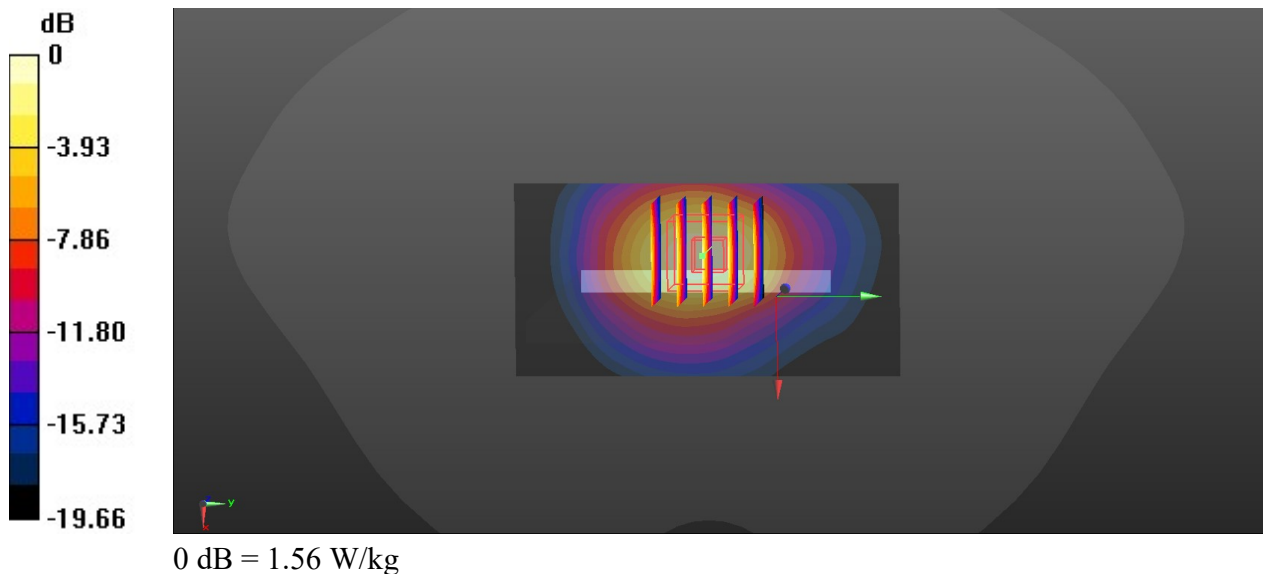
Communication System: UID 0, UMTS (0); Frequency: 1907.6 MHz; Duty Cycle: 1:1
Medium: HSL_1900_210704 Medium parameters used: $f = 1908 \text{ MHz}$; $\sigma = 1.457 \text{ S/m}$; $\epsilon_r = 39.974$;
 $\rho = 1000 \text{ kg/m}^3$
Ambient Temperature : 23.5 °C; Liquid Temperature : 22.7 °C

DASY5 Configuration:

- Probe: EX3DV4 - SN7641; ConvF(9.05, 9.05, 9.05); Calibrated: 2021/3/15
- Sensor-Surface: 1.4mm (Mechanical Surface Detection)
- Electronics: DAE4 Sn715; Calibrated: 2020/7/27
- Phantom: Twin-SAM1(P1aP2a20); Type: QD 000 P40 CD; Serial: TP:1670
- Measurement SW: DASY52, Version 52.10 (3); SEMCAD X Version 14.6.13 (7474)

Ch9538/Area Scan (41x81x1): Interpolated grid: $dx=1.500 \text{ mm}$, $dy=1.500 \text{ mm}$
Maximum value of SAR (interpolated) = 1.63 W/kg

Ch9538/Zoom Scan (5x5x7)/Cube 0: Measurement grid: $dx=8\text{mm}$, $dy=8\text{mm}$, $dz=5\text{mm}$
Reference Value = 0 V/m; Power Drift = 0.01 dB
Peak SAR (extrapolated) = 1.89 W/kg
SAR(1 g) = 1.01 W/kg; SAR(10 g) = 0.523 W/kg
Maximum value of SAR (measured) = 1.56 W/kg



24_LTE Band 71_20M_QPSK_1RB_0Offset_Back_5mm_Ch133322

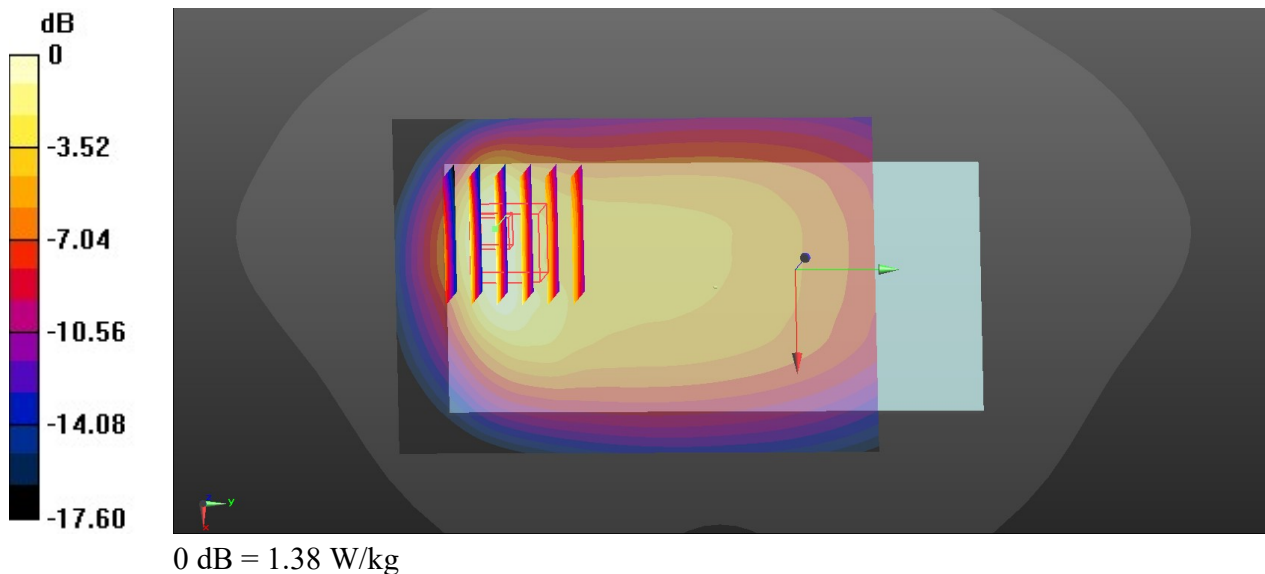
Communication System: UID 0, LTE (0); Frequency: 683 MHz; Duty Cycle: 1:1
Medium: HSL_750_210701 Medium parameters used: $f = 683$ MHz; $\sigma = 0.852$ S/m; $\epsilon_r = 42.345$; $\rho = 1000$ kg/m³
Ambient Temperature : 23.6 °C; Liquid Temperature : 22.5 °C

DASY5 Configuration:

- Probe: EX3DV4 - SN7641; ConvF(11.05, 11.05, 11.05); Calibrated: 2021/3/15
- Sensor-Surface: 1.4mm (Mechanical Surface Detection)
- Electronics: DAE4 Sn715; Calibrated: 2020/7/27
- Phantom: Twin-SAM1(P1aP2a20); Type: QD 000 P40 CD; Serial: TP:1670
- Measurement SW: DASY52, Version 52.10 (3); SEMCAD X Version 14.6.13 (7474)

Ch133322/Area Scan (71x101x1): Interpolated grid: dx=1.500 mm, dy=1.500 mm
Maximum value of SAR (interpolated) = 1.57 W/kg

Ch133322/Zoom Scan (6x6x7)/Cube 0: Measurement grid: dx=8mm, dy=8mm, dz=5mm
Reference Value = 25.89 V/m; Power Drift = -0.07 dB
Peak SAR (extrapolated) = 1.80 W/kg
SAR(1 g) = 0.831 W/kg; SAR(10 g) = 0.478 W/kg
Maximum value of SAR (measured) = 1.38 W/kg



25_LTE Band 12_10M_QPSK_1RB_0Offset_Back_5mm_Ch23095

Communication System: UID 0, LTE (0); Frequency: 707.5 MHz; Duty Cycle: 1:1
 Medium: HSL_750_210701 Medium parameters used: $f = 707.5$ MHz; $\sigma = 0.872$ S/m; $\epsilon_r = 41.948$;
 $\rho = 1000$ kg/m³
 Ambient Temperature : 23.6 °C; Liquid Temperature : 22.5 °C

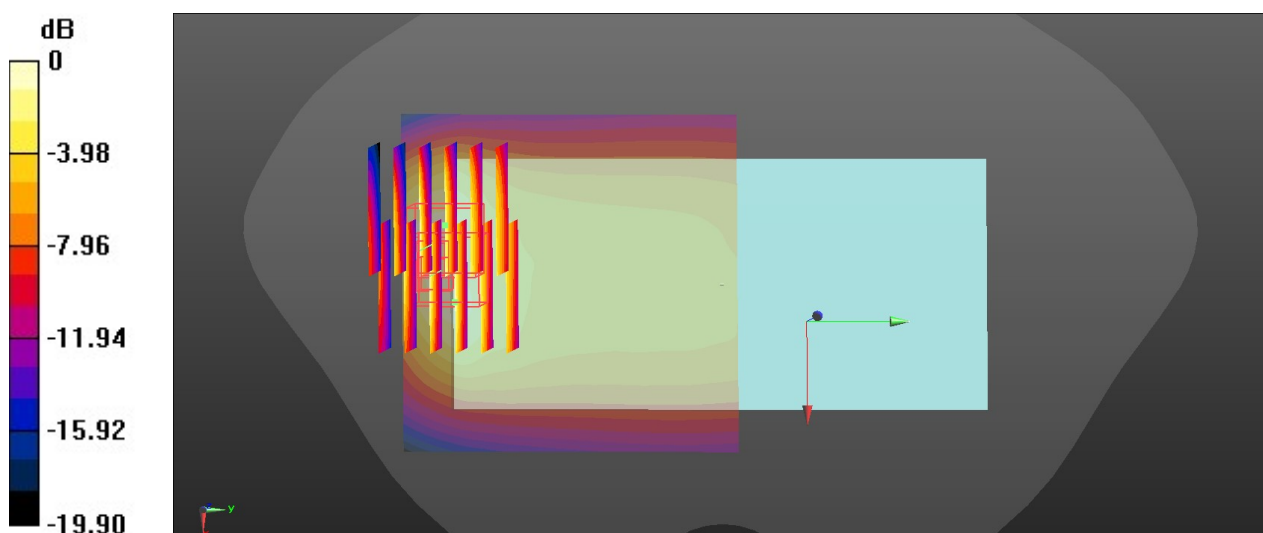
DASY5 Configuration:

- Probe: EX3DV4 - SN7641; ConvF(11.05, 11.05, 11.05); Calibrated: 2021/3/15
- Sensor-Surface: 1.4mm (Mechanical Surface Detection)
- Electronics: DAE4 Sn715; Calibrated: 2020/7/27
- Phantom: Twin-SAM1(P1aP2a20); Type: QD 000 P40 CD; Serial: TP:1670
- Measurement SW: DASY52, Version 52.10 (3); SEMCAD X Version 14.6.13 (7474)

Ch23095/Area Scan (71x71x1): Interpolated grid: dx=1.500 mm, dy=1.500 mm
 Maximum value of SAR (interpolated) = 1.18 W/kg

Ch23095/Zoom Scan (6x6x7)/Cube 0: Measurement grid: dx=8mm, dy=8mm, dz=5mm
 Reference Value = 23.42 V/m; Power Drift = 0.05 dB
 Peak SAR (extrapolated) = 1.60 W/kg
SAR(1 g) = 0.821 W/kg; SAR(10 g) = 0.482 W/kg
 Maximum value of SAR (measured) = 1.28 W/kg

Ch23095/Zoom Scan (6x6x7)/Cube 1: Measurement grid: dx=8mm, dy=8mm, dz=5mm
 Reference Value = 23.42 V/m; Power Drift = 0.05 dB
 Peak SAR (extrapolated) = 1.63 W/kg
SAR(1 g) = 0.802 W/kg; SAR(10 g) = 0.470 W/kg
 Maximum value of SAR (measured) = 1.28 W/kg



0 dB = 1.28 W/kg

26_LTE Band 13_10M_QPSK_1RB_0Offset_Back_5mm_Ch23230

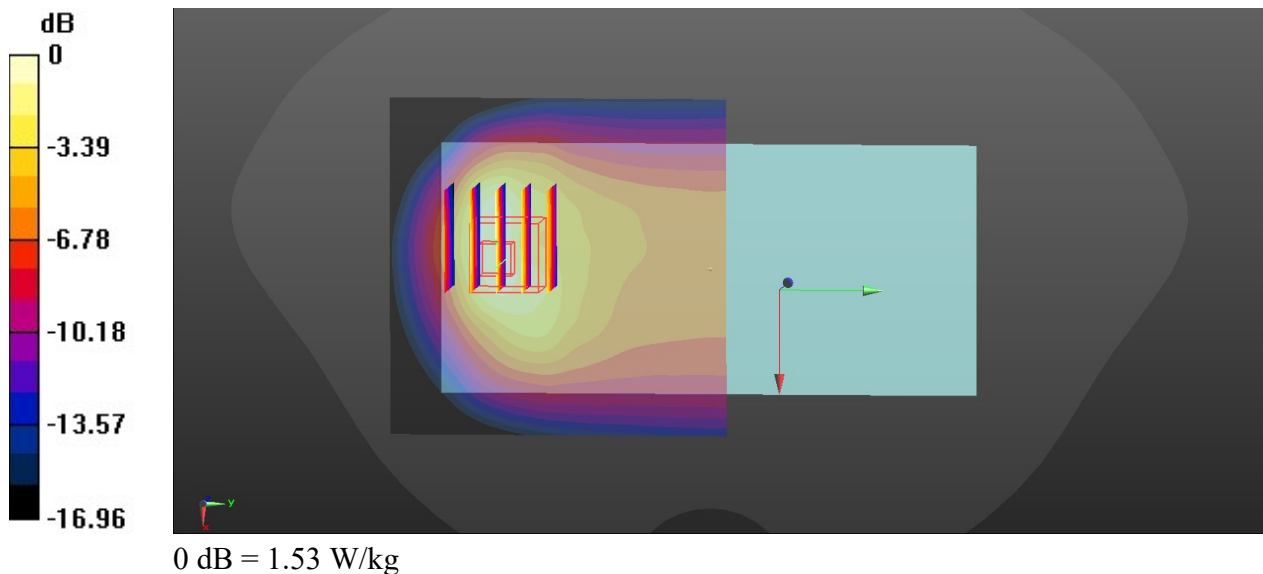
Communication System: UID 0, LTE (0); Frequency: 782 MHz; Duty Cycle: 1:1
Medium: HSL_750_210701 Medium parameters used: $f = 782 \text{ MHz}$; $\sigma = 0.913 \text{ S/m}$; $\epsilon_r = 40.28$; $\rho = 1000 \text{ kg/m}^3$
Ambient Temperature : 23.6 °C; Liquid Temperature : 22.5 °C

DASY5 Configuration:

- Probe: EX3DV4 - SN7641; ConvF(11.05, 11.05, 11.05); Calibrated: 2021/3/15
- Sensor-Surface: 1.4mm (Mechanical Surface Detection)
- Electronics: DAE4 Sn715; Calibrated: 2020/7/27
- Phantom: Twin-SAM1(P1aP2a20); Type: QD 000 P40 CD; Serial: TP:1670
- Measurement SW: DASY52, Version 52.10 (3); SEMCAD X Version 14.6.13 (7474)

Ch23230/Area Scan (71x71x1): Interpolated grid: $dx=1.500 \text{ mm}$, $dy=1.500 \text{ mm}$
Maximum value of SAR (interpolated) = 1.62 W/kg

Ch23230/Zoom Scan (5x5x7)/Cube 0: Measurement grid: $dx=8\text{mm}$, $dy=8\text{mm}$, $dz=5\text{mm}$
Reference Value = 21.45 V/m; Power Drift = 0.03 dB
Peak SAR (extrapolated) = 1.84 W/kg
SAR(1 g) = 0.961 W/kg; SAR(10 g) = 0.544 W/kg
Maximum value of SAR (measured) = 1.53 W/kg



27_LTE Band 26_15M_QPSK_1RB_0Offset_Back_5mm_Ch26965

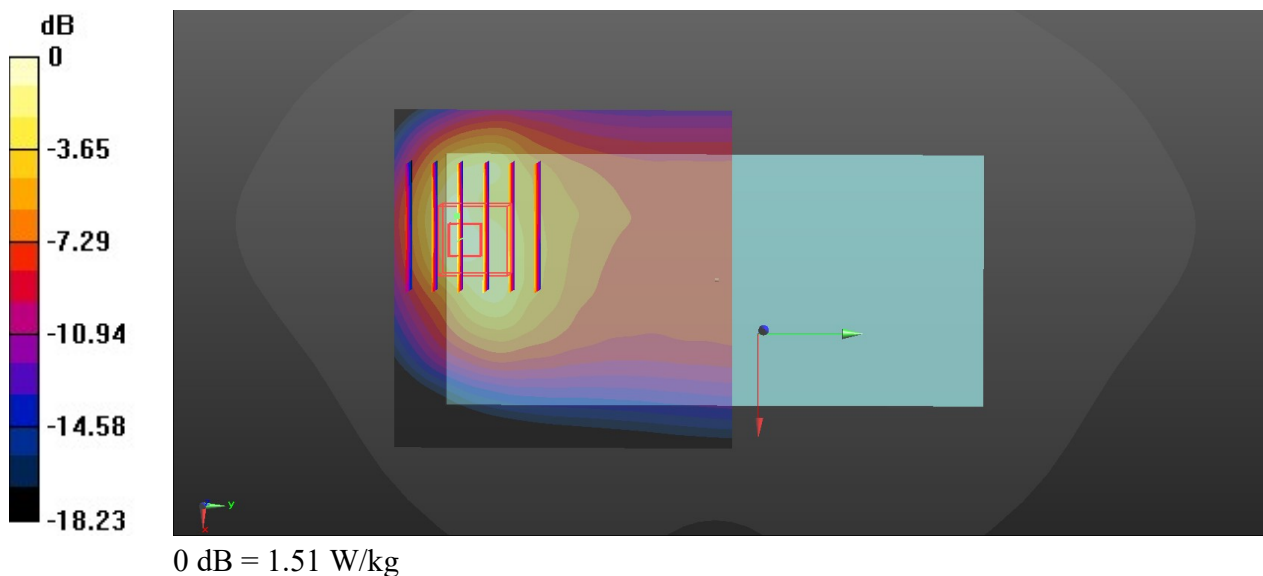
Communication System: UID 0, LTE (0); Frequency: 841.5 MHz; Duty Cycle: 1:1
Medium: HSL_835_210702 Medium parameters used : $f = 841.5$ MHz; $\sigma = 0.886$ S/m; $\epsilon_r = 41.848$;
 $\rho = 1000$ kg/m³
Ambient Temperature : 23.5 °C; Liquid Temperature : 22.5 °C

DASY5 Configuration:

- Probe: EX3DV4 - SN7641; ConvF(10.9, 10.9, 10.9); Calibrated: 2021/3/15
- Sensor-Surface: 1.4mm (Mechanical Surface Detection)
- Electronics: DAE4 Sn715; Calibrated: 2020/7/27
- Phantom: Twin-SAM1(P1aP2a20); Type: QD 000 P40 CD; Serial: TP:1670
- Measurement SW: DASY52, Version 52.10 (3); SEMCAD X Version 14.6.13 (7474)

Ch26965/Area Scan (71x71x1): Interpolated grid: dx=1.500 mm, dy=1.500 mm
Maximum value of SAR (interpolated) = 1.35 W/kg

Ch26965/Zoom Scan (6x6x7)/Cube 0: Measurement grid: dx=8mm, dy=8mm, dz=5mm
Reference Value = 17.94 V/m; Power Drift = 0.13 dB
Peak SAR (extrapolated) = 1.92 W/kg
SAR(1 g) = 0.948 W/kg; SAR(10 g) = 0.517 W/kg
Maximum value of SAR (measured) = 1.51 W/kg



28_LTE Band 66_20M_QPSK_1RB_0Offset_Back_5mm_Ch132322

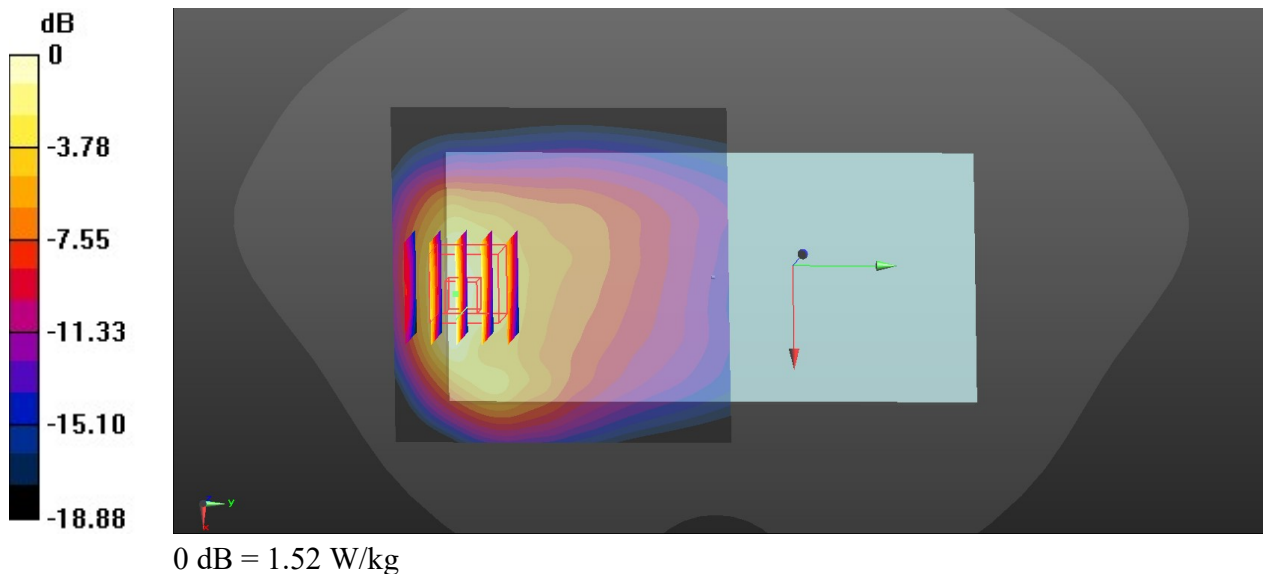
Communication System: UID 0, LTE (0); Frequency: 1745 MHz; Duty Cycle: 1:1
Medium: HSL_1750_210703 Medium parameters used: $f = 1745$ MHz; $\sigma = 1.383$ S/m; $\epsilon_r = 39.778$;
 $\rho = 1000$ kg/m³
Ambient Temperature : 23.6 °C; Liquid Temperature : 22.4 °C

DASY5 Configuration:

- Probe: EX3DV4 - SN7641; ConvF(9.41, 9.41, 9.41); Calibrated: 2021/3/15
- Sensor-Surface: 1.4mm (Mechanical Surface Detection)
- Electronics: DAE4 Sn715; Calibrated: 2020/7/27
- Phantom: Twin-SAM1(P1aP2a20); Type: QD 000 P40 CD; Serial: TP:1670
- Measurement SW: DASY52, Version 52.10 (3); SEMCAD X Version 14.6.13 (7474)

Ch132322/Area Scan (71x71x1): Interpolated grid: dx=1.500 mm, dy=1.500 mm
Maximum value of SAR (interpolated) = 1.39 W/kg

Ch132322/Zoom Scan (5x5x7)/Cube 0: Measurement grid: dx=8mm, dy=8mm, dz=5mm
Reference Value = 0.3920 V/m; Power Drift = 0.09 dB
Peak SAR (extrapolated) = 1.83 W/kg
SAR(1 g) = 1.01 W/kg; SAR(10 g) = 0.564 W/kg
Maximum value of SAR (measured) = 1.52 W/kg



29_LTE Band 25_20M_QPSK_1RB_0Offset_Back_5mm_Ch26590

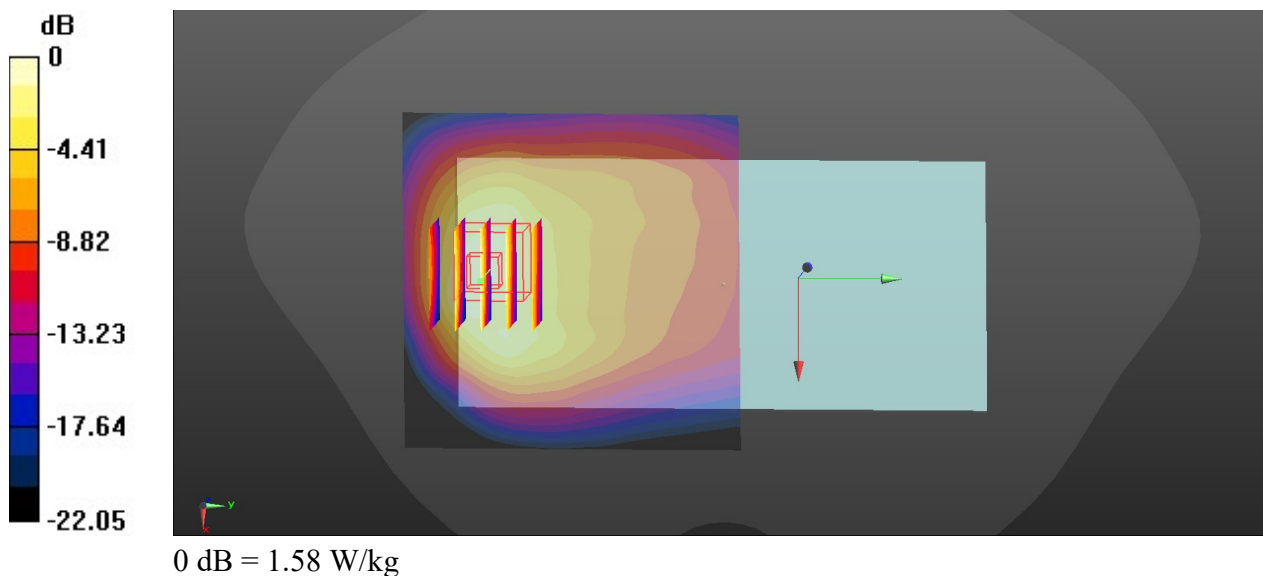
Communication System: UID 0, LTE (0); Frequency: 1905 MHz; Duty Cycle: 1:1
Medium: HSL_1900_210704 Medium parameters used: $f = 1905$ MHz; $\sigma = 1.454$ S/m; $\epsilon_r = 39.986$;
 $\rho = 1000$ kg/m³
Ambient Temperature : 23.5 °C; Liquid Temperature : 22.7 °C

DASY5 Configuration:

- Probe: EX3DV4 - SN7641; ConvF(9.05, 9.05, 9.05); Calibrated: 2021/3/15
- Sensor-Surface: 1.4mm (Mechanical Surface Detection)
- Electronics: DAE4 Sn715; Calibrated: 2020/7/27
- Phantom: Twin-SAM1(P1aP2a20); Type: QD 000 P40 CD; Serial: TP:1670
- Measurement SW: DASY52, Version 52.10 (3); SEMCAD X Version 14.6.13 (7474)

Ch26590/Area Scan (71x71x1): Interpolated grid: dx=1.500 mm, dy=1.500 mm
Maximum value of SAR (interpolated) = 1.46 W/kg

Ch26590/Zoom Scan (5x5x7)/Cube 0: Measurement grid: dx=8mm, dy=8mm, dz=5mm
Reference Value = 0 V/m; Power Drift = 0.03dB
Peak SAR (extrapolated) = 1.90 W/kg
SAR(1 g) = 1.02 W/kg; SAR(10 g) = 0.560 W/kg
Maximum value of SAR (measured) = 1.58 W/kg



30_LTE Band 7_20M_QPSK_1RB_0Offset_Bottom Side_5mm_Ch21350

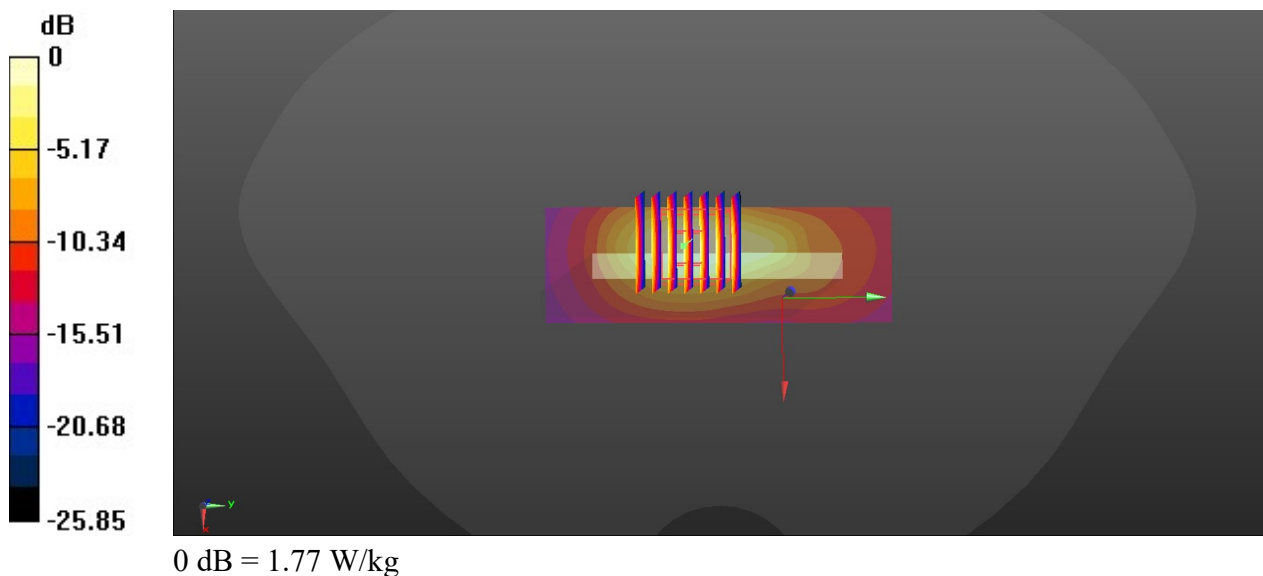
Communication System: UID 0, LTE (0); Frequency: 2560 MHz; Duty Cycle: 1:1
Medium: HSL_2600_210706 Medium parameters used: $f = 2560$ MHz; $\sigma = 1.944$ S/m; $\epsilon_r = 38.479$;
 $\rho = 1000$ kg/m³
Ambient Temperature : 23.4 °C; Liquid Temperature : 22.6 °C

DASY5 Configuration:

- Probe: EX3DV4 - SN7641; ConvF(7.94, 7.94, 7.94); Calibrated: 2021/3/15
- Sensor-Surface: 1.4mm (Mechanical Surface Detection)
- Electronics: DAE4 Sn715; Calibrated: 2020/7/27
- Phantom: Twin-SAM1(P1aP2a20); Type: QD 000 P40 CD; Serial: TP:1670
- Measurement SW: DASY52, Version 52.10 (3); SEMCAD X Version 14.6.13 (7474)

Ch21350/Area Scan (31x91x1): Interpolated grid: dx=1.200 mm, dy=1.200 mm
Maximum value of SAR (interpolated) = 1.83 W/kg

Ch21350/Zoom Scan (7x7x7)/Cube 0: Measurement grid: dx=5mm, dy=5mm, dz=5mm
Reference Value = 25.42 V/m; Power Drift = 0.09 dB
Peak SAR (extrapolated) = 2.28 W/kg
SAR(1 g) = 1.02 W/kg; SAR(10 g) = 0.441 W/kg
Maximum value of SAR (measured) = 1.77 W/kg



31_LTE Band 41_20M_QPSK_1RB_0Offset_Back_5mm_Ch41490

Communication System: UID 0, LTE (0); Frequency: 2680 MHz; Duty Cycle: 1:2.331
Medium: HSL_2600_210706 Medium parameters used: $f = 2680$ MHz; $\sigma = 2.056$ S/m; $\epsilon_r = 37.972$;
 $\rho = 1000$ kg/m³
Ambient Temperature : 23.4 °C; Liquid Temperature : 22.6 °C

DASY5 Configuration:

- Probe: EX3DV4 - SN7641; ConvF(7.94, 7.94, 7.94); Calibrated: 2021/3/15
- Sensor-Surface: 1.4mm (Mechanical Surface Detection)
- Electronics: DAE4 Sn715; Calibrated: 2020/7/27
- Phantom: Twin-SAM1(P1aP2a20); Type: QD 000 P40 CD; Serial: TP:1670
- Measurement SW: DASY52, Version 52.10 (3); SEMCAD X Version 14.6.13 (7474)

Ch41490/Area Scan (81x91x1): Interpolated grid: dx=1.200 mm, dy=1.200 mm
Maximum value of SAR (interpolated) = 1.68 W/kg

Ch41490/Zoom Scan (7x7x7)/Cube 0: Measurement grid: dx=5mm, dy=5mm, dz=5mm
Reference Value = 2.305 V/m; Power Drift = 0.02 dB
Peak SAR (extrapolated) = 2.58 W/kg
SAR(1 g) = 1.01 W/kg; SAR(10 g) = 0.369 W/kg
Maximum value of SAR (measured) = 1.79 W/kg

