

54_LTE Band 66_20M_QPSK_50RB_24Offset_Back_5mm_Ch132322

Communication System: UID 0, LTE (0); Frequency: 1745 MHz; Duty Cycle: 1:1

Medium: HSL_1750_210604 Medium parameters used: $f = 1745$ MHz; $\sigma = 1.373$ S/m; $\epsilon_r = 41.368$; $\rho = 1000$ kg/m³

Ambient Temperature : 23.5 °C; Liquid Temperature : 22.6 °C

DASY5 Configuration:

- Probe: EX3DV4 - SN7641; ConvF(9.41, 9.41, 9.41); Calibrated: 2021/3/15
- Sensor-Surface: 1.4mm (Mechanical Surface Detection)
- Electronics: DAE4 Sn1664; Calibrated: 2021/3/1
- Phantom: Twin-SAM V8.0 (Right); Type: QD 000 P41 AA; Serial: 2033
- Measurement SW: DASY52, Version 52.10 (4); SEMCAD X Version 14.6.14 (7483)

Ch132322/Area Scan (71x81x1): Interpolated grid: dx=1.500 mm, dy=1.500 mm

Maximum value of SAR (interpolated) = 1.18 W/kg

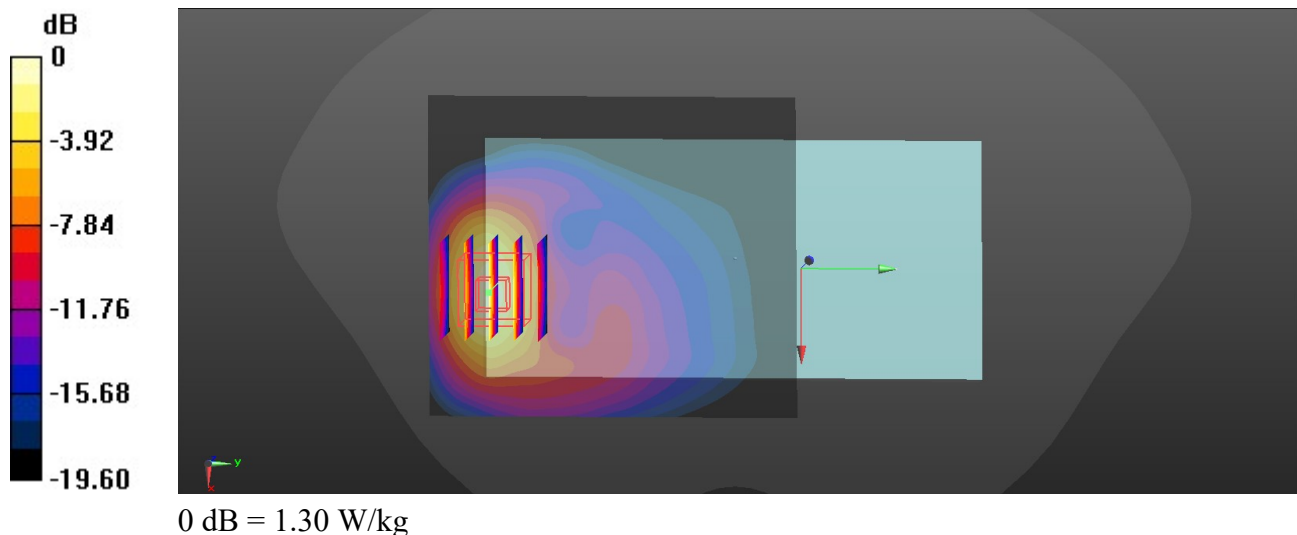
Ch132322/Zoom Scan (5x5x7)/Cube 0: Measurement grid: dx=8mm, dy=8mm, dz=5mm

Reference Value = 4.275 V/m; Power Drift = 0.08 dB

Peak SAR (extrapolated) = 1.62 W/kg

SAR(1 g) = 0.808 W/kg; SAR(10 g) = 0.399 W/kg

Maximum value of SAR (measured) = 1.30 W/kg



55_LTE Band 2_20M_QPSK_100RB_0Offset_Back_5mm_Ch19100

Communication System: UID 0, LTE (0); Frequency: 1900 MHz; Duty Cycle: 1:1

Medium: HSL_1900_210606 Medium parameters used: $f = 1900$ MHz; $\sigma = 1.443$ S/m; $\epsilon_r = 40.03$; $\rho = 1000$ kg/m³

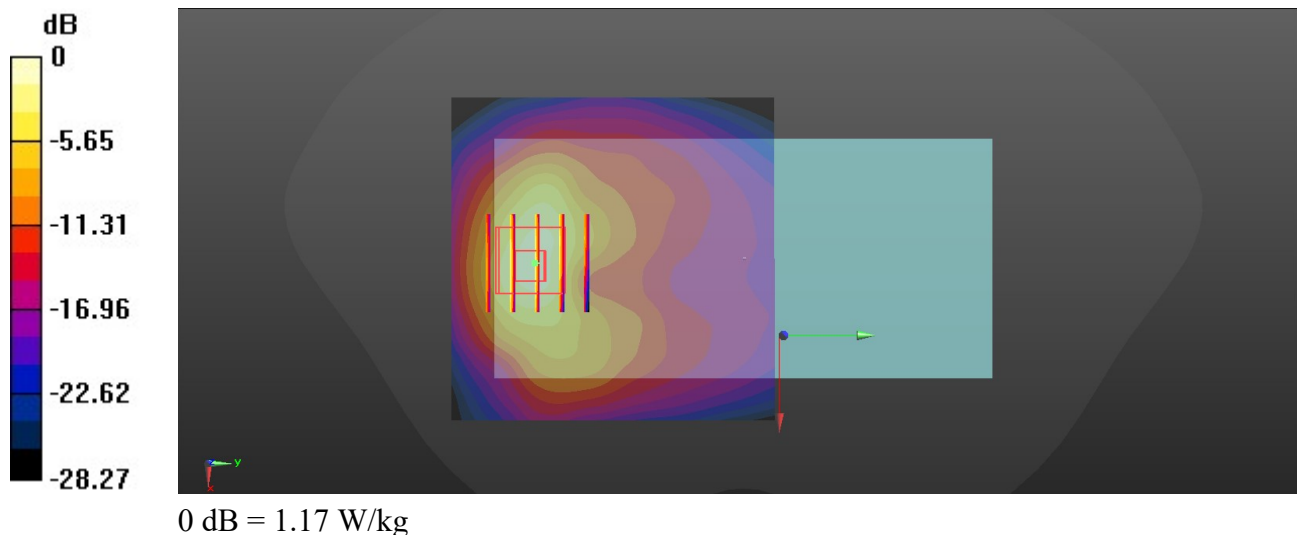
Ambient Temperature : 23.4 °C; Liquid Temperature : 22.4 °C

DASY5 Configuration:

- Probe: EX3DV4 - SN7641; ConvF(9.05, 9.05, 9.05); Calibrated: 2021/3/15
- Sensor-Surface: 1.4mm (Mechanical Surface Detection)
- Electronics: DAE4 Sn1664; Calibrated: 2021/3/1
- Phantom: Twin-SAM V8.0 (Right); Type: QD 000 P41 AA; Serial: 2033
- Measurement SW: DASY52, Version 52.10 (4); SEMCAD X Version 14.6.14 (7483)

Ch19100/Area Scan (71x71x1): Interpolated grid: dx=1.500 mm, dy=1.500 mm
 Maximum value of SAR (interpolated) = 0.949 W/kg

Ch19100/Zoom Scan (5x5x7)/Cube 0: Measurement grid: dx=8mm, dy=8mm, dz=5mm
 Reference Value = 4.910 V/m; Power Drift = -0.08 dB
 Peak SAR (extrapolated) = 1.49 W/kg
SAR(1 g) = 0.686 W/kg; SAR(10 g) = 0.318 W/kg
 Maximum value of SAR (measured) = 1.17 W/kg



56_LTE Band 7_20M_QPSK_50RB_24Offset_Back_5mm_Ch20850

Communication System: UID 0, LTE (0); Frequency: 2510 MHz; Duty Cycle: 1:1

Medium: HSL_2600_210610 Medium parameters used: $f = 2510$ MHz; $\sigma = 1.953$ S/m; $\epsilon_r = 37.621$; $\rho = 1000$ kg/m³

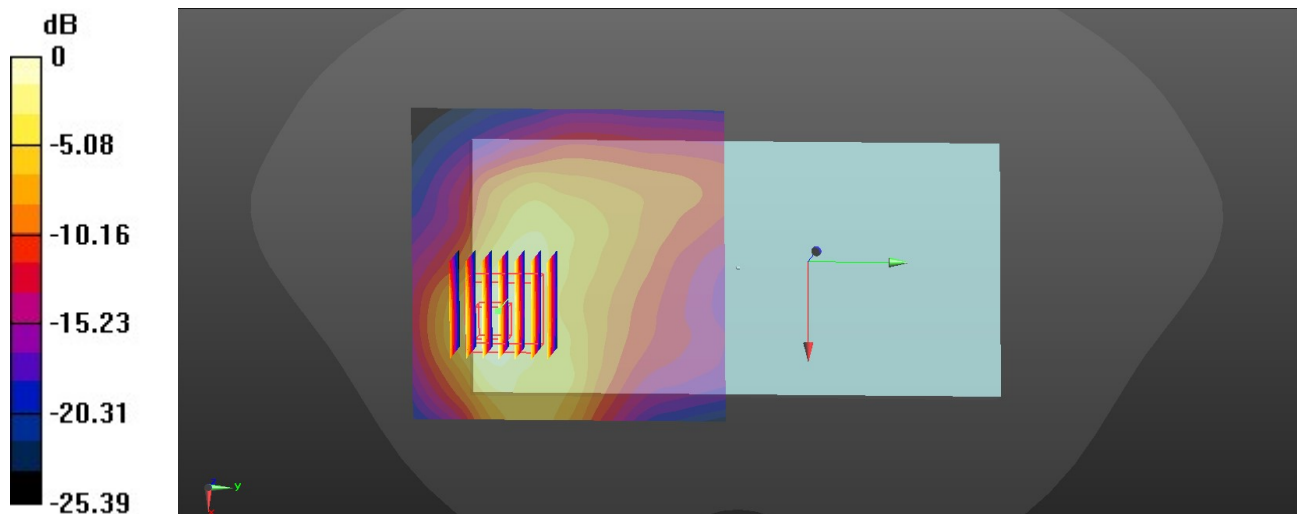
Ambient Temperature : 23.5 °C; Liquid Temperature : 22.6 °C

DASY5 Configuration:

- Probe: EX3DV4 - SN7641; ConvF(7.94, 7.94, 7.94); Calibrated: 2021/3/15
- Sensor-Surface: 1.4mm (Mechanical Surface Detection)
- Electronics: DAE4 Sn1664; Calibrated: 2021/3/1
- Phantom: Twin-SAM V8.0 (Right); Type: QD 000 P41 AA; Serial: 2033
- Measurement SW: DASY52, Version 52.10 (4); SEMCAD X Version 14.6.14 (7483)

Ch20850/Area Scan (81x81x1): Interpolated grid: dx=1.200 mm, dy=1.200 mm
 Maximum value of SAR (interpolated) = 1.48 W/kg

Ch20850/Zoom Scan (7x7x7)/Cube 0: Measurement grid: dx=5mm, dy=5mm, dz=5mm
 Reference Value = 4.728 V/m; Power Drift = -0.16 dB
 Peak SAR (extrapolated) = 1.91 W/kg
SAR(1 g) = 0.820 W/kg; SAR(10 g) = 0.385 W/kg
 Maximum value of SAR (measured) = 1.43 W/kg



0 dB = 1.43 W/kg

57_LTE Band 41_20M_QPSK_50RB_24Offset_Back_5mm_Ch39750

Communication System: UID 0, LTE (0); Frequency: 2506 MHz; Duty Cycle: 1:1.59

Medium: HSL_2600_210610 Medium parameters used: $f = 2506$ MHz; $\sigma = 1.949$ S/m; $\epsilon_r = 37.636$; $\rho = 1000$ kg/m³

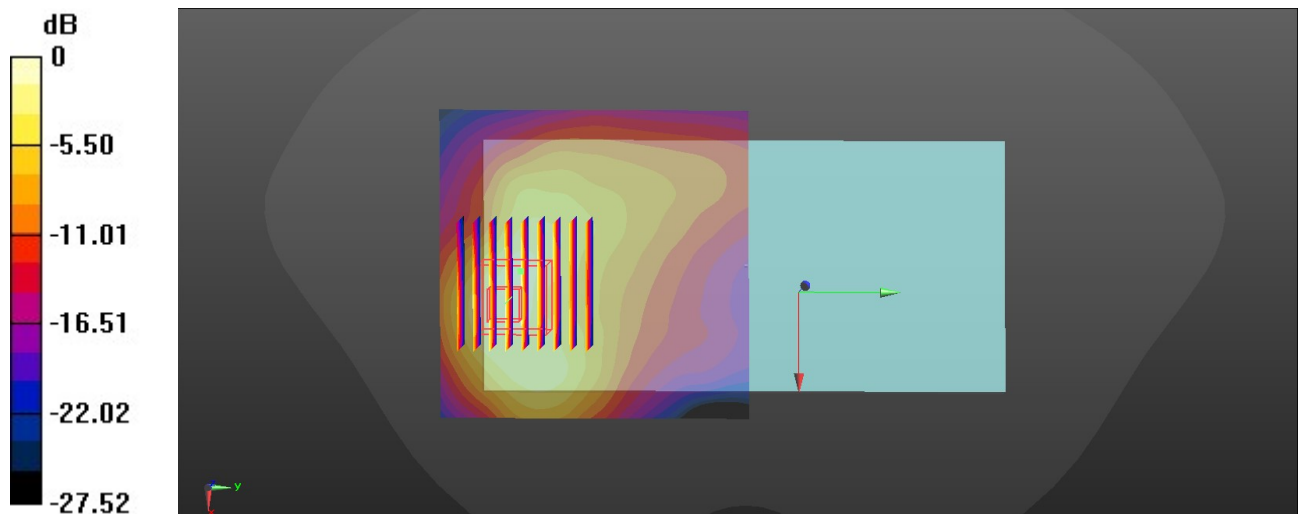
Ambient Temperature : 23.5 °C; Liquid Temperature : 22.6 °C

DASY5 Configuration:

- Probe: EX3DV4 - SN7641; ConvF(7.94, 7.94, 7.94); Calibrated: 2021/3/15
- Sensor-Surface: 1.4mm (Mechanical Surface Detection)
- Electronics: DAE4 Sn1664; Calibrated: 2021/3/1
- Phantom: Twin-SAM V8.0 (Right); Type: QD 000 P41 AA; Serial: 2033
- Measurement SW: DASY52, Version 52.10 (4); SEMCAD X Version 14.6.14 (7483)

Ch39750/Area Scan (81x81x1): Interpolated grid: dx=1.200 mm, dy=1.200 mm
Maximum value of SAR (interpolated) = 1.42 W/kg

Ch39750/Zoom Scan (9x9x7)/Cube 0: Measurement grid: dx=5mm, dy=5mm, dz=5mm
Reference Value = 4.429 V/m; Power Drift = 0.16 dB
Peak SAR (extrapolated) = 2.15 W/kg
SAR(1 g) = 0.916 W/kg; SAR(10 g) = 0.428 W/kg
Maximum value of SAR (measured) = 1.64 W/kg



0 dB = 1.64 W/kg

58_LTE Band 42_20M_QPSK_50RB_24Offset_Back_5mm_Ch42190

Communication System: UID 0, LTE (0); Frequency: 3460 MHz; Duty Cycle: 1:1.59

Medium: HSL_3500_210619 Medium parameters used: $f = 3460$ MHz; $\sigma = 2.882$ S/m; $\epsilon_r = 38.674$; $\rho = 1000$ kg/m³

Ambient Temperature : 23.8 °C; Liquid Temperature : 22.8 °C

DASY5 Configuration:

- Probe: EX3DV4 - SN7641; ConvF(7.4, 7.4, 7.4); Calibrated: 2021/3/15
- Sensor-Surface: 1.4mm (Mechanical Surface Detection)
- Electronics: DAE4 Sn1664; Calibrated: 2021/3/1
- Phantom: Twin-SAM V8.0 (Right); Type: QD 000 P41 AA; Serial: 2033
- Measurement SW: DASY52, Version 52.10 (4); SEMCAD X Version 14.6.14 (7483)

Ch42190/Area Scan (81x101x1): Interpolated grid: dx=1.200 mm, dy=1.200 mm

Maximum value of SAR (interpolated) = 2.00 W/kg

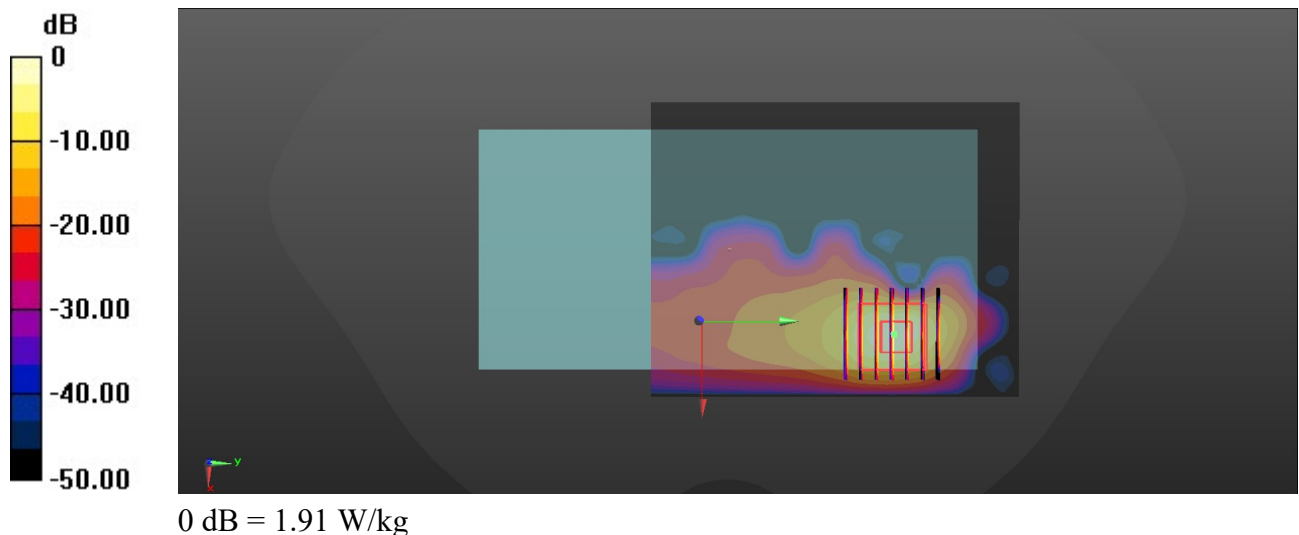
Ch42190/Zoom Scan (7x7x8)/Cube 0: Measurement grid: dx=5mm, dy=5mm, dz=1.4mm

Reference Value = 0 V/m; Power Drift = -0.1 dB

Peak SAR (extrapolated) = 3.00 W/kg

SAR(1 g) = 0.818 W/kg; SAR(10 g) = 0.220 W/kg

Maximum value of SAR (measured) = 1.91 W/kg



59_N5_20M_BPSK_1RB_1Offset_DFT-15_Back_5mm_Ch167300

Communication System: UID 0, 5GNR (0); Frequency: 836.5 MHz; Duty Cycle: 1:1

Medium: HSL_835_210706 Medium parameters used: $f = 836.5$ MHz; $\sigma = 0.93$ S/m; $\epsilon_r = 41.777$; $\rho = 1000$ kg/m³

Ambient Temperature : 23.6 °C; Liquid Temperature : 22.6 °C

DASY5 Configuration:

- Probe: EX3DV4 - SN7641; ConvF(10.9, 10.9, 10.9); Calibrated: 2021/3/15
- Sensor-Surface: 1.4mm (Mechanical Surface Detection)
- Electronics: DAE4 Sn1664; Calibrated: 2021/3/1
- Phantom: Twin-SAM V8.0 (Right); Type: QD 000 P41 AA; Serial: 2033
- Measurement SW: DASY52, Version 52.10 (4); SEMCAD X Version 14.6.14 (7483)

Ch167300/Area Scan (71x71x1): Interpolated grid: dx=1.500 mm, dy=1.500 mm

Maximum value of SAR (interpolated) = 0.962 W/kg

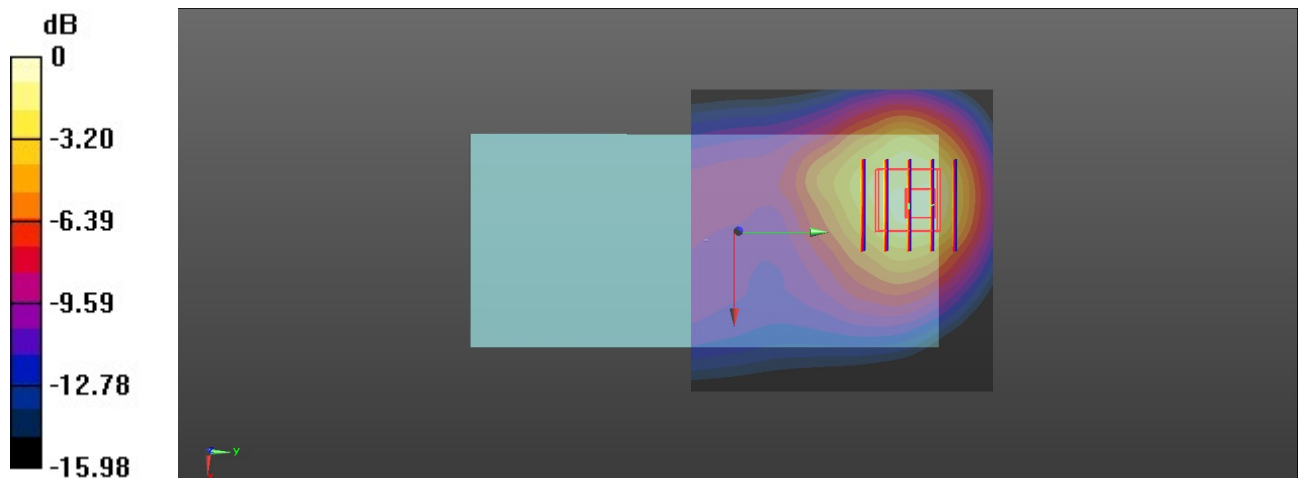
Ch167300/Zoom Scan (5x5x7)/Cube 0: Measurement grid: dx=8mm, dy=8mm, dz=5mm

Reference Value = 11.96 V/m; Power Drift = -0.03 dB

Peak SAR (extrapolated) = 1.45 W/kg

SAR(1 g) = 0.681 W/kg; SAR(10 g) = 0.393 W/kg

Maximum value of SAR (measured) = 1.09 W/kg



0 dB = 1.09 W/kg

60_N66_20M_BPSK_1RB_53Offset_DFT-15_Front_16mm_Ch349000

Communication System: UID 0, 5G NR (0); Frequency: 1745 MHz; Duty Cycle: 1:1

Medium: HSL_1750_210604 Medium parameters used: $f = 1745$ MHz; $\sigma = 1.373$ S/m; $\epsilon_r = 41.368$; $\rho = 1000$ kg/m³

Ambient Temperature : 23.5 °C; Liquid Temperature : 22.6 °C

DASY5 Configuration:

- Probe: EX3DV4 - SN7641; ConvF(9.41, 9.41, 9.41); Calibrated: 2021/3/15
- Sensor-Surface: 1.4mm (Mechanical Surface Detection)
- Electronics: DAE4 Sn1664; Calibrated: 2021/3/1
- Phantom: Twin-SAM V8.0 (Right); Type: QD 000 P41 AA; Serial: 2033
- Measurement SW: DASY52, Version 52.10 (4); SEMCAD X Version 14.6.14 (7483)

Ch349000/Area Scan (71x81x1): Interpolated grid: dx=1.500 mm, dy=1.500 mm

Maximum value of SAR (interpolated) = 0.624 W/kg

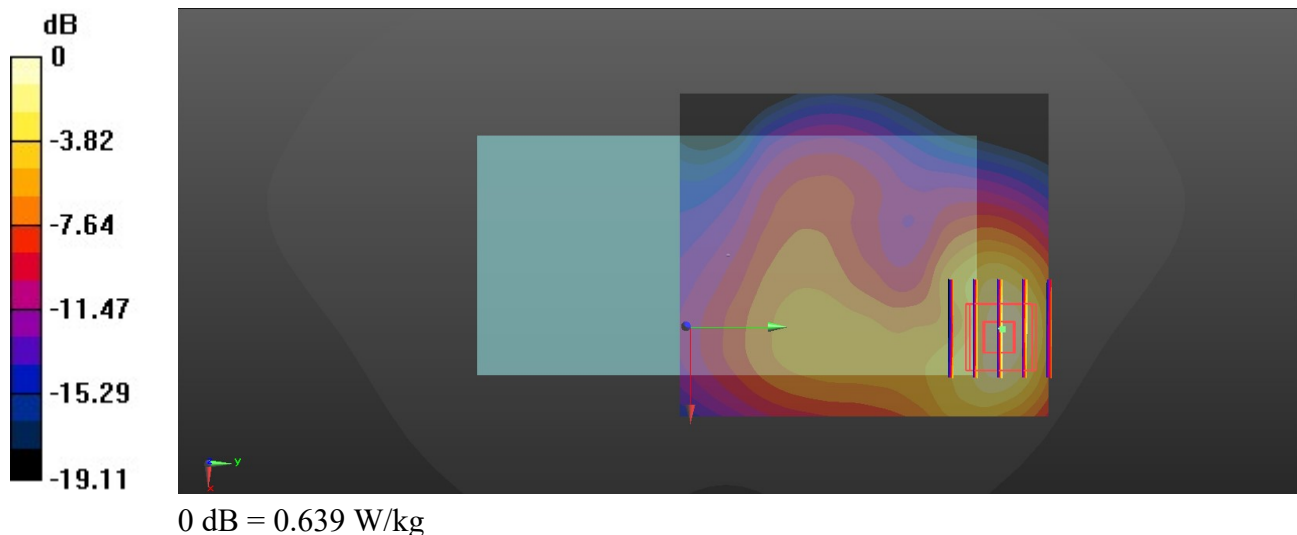
Ch349000/Zoom Scan (5x5x7)/Cube 0: Measurement grid: dx=8mm, dy=8mm, dz=5mm

Reference Value = 6.505 V/m; Power Drift = 0.09 dB

Peak SAR (extrapolated) = 0.784 W/kg

SAR(1 g) = 0.423 W/kg; SAR(10 g) = 0.224 W/kg

Maximum value of SAR (measured) = 0.639 W/kg



61_N7_20M_BPSK_1RB_53Offset_DFT-15_Back_5mm_Ch512000

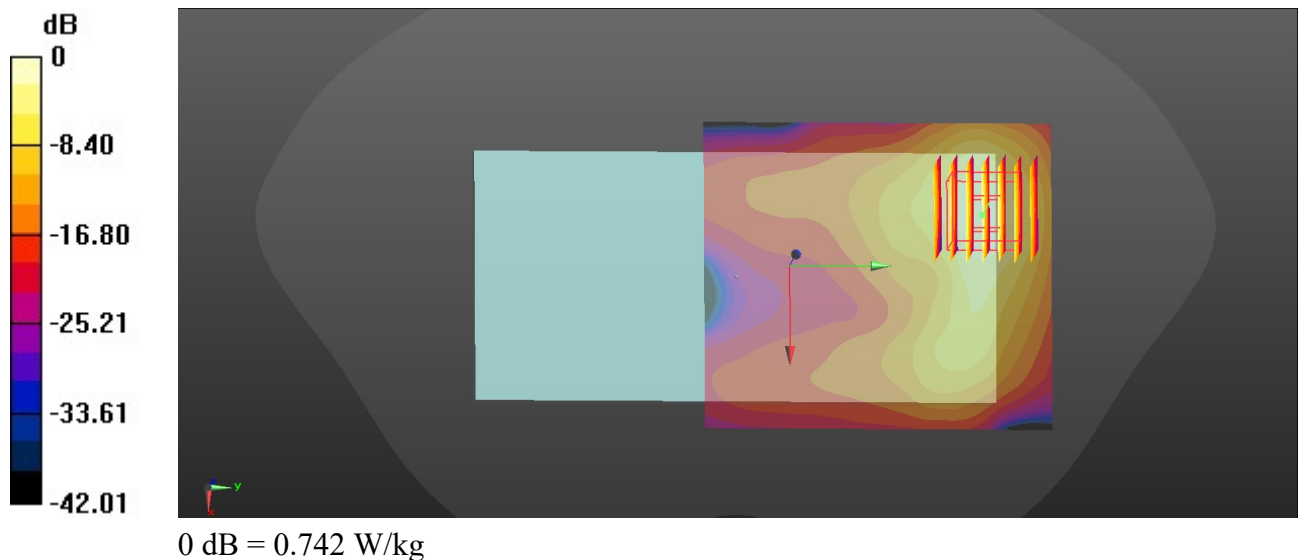
Communication System: UID 0, 5G NR (0); Frequency: 2560 MHz; Duty Cycle: 1:1
 Medium: HSL_2600_210610 Medium parameters used: $f = 2560$ MHz; $\sigma = 2.01$ S/m; $\epsilon_r = 37.49$; $\rho = 1000$ kg/m³
 Ambient Temperature : 23.5 °C; Liquid Temperature : 22.6 °C

DASY5 Configuration:

- Probe: EX3DV4 - SN7641; ConvF(7.94, 7.94, 7.94); Calibrated: 2021/3/15
- Sensor-Surface: 1.4mm (Mechanical Surface Detection)
- Electronics: DAE4 Sn1664; Calibrated: 2021/3/1
- Phantom: Twin-SAM V8.0 (Right); Type: QD 000 P41 AA; Serial: 2033
- Measurement SW: DASY52, Version 52.10 (4); SEMCAD X Version 14.6.14 (7483)

Ch512000/Area Scan (81x91x1): Interpolated grid: dx=1.200 mm, dy=1.200 mm
 Maximum value of SAR (interpolated) = 0.728 W/kg

Ch512000/Zoom Scan (7x7x7)/Cube 0: Measurement grid: dx=5mm, dy=5mm, dz=5mm
 Reference Value = 1.623 V/m; Power Drift = 0.03 dB
 Peak SAR (extrapolated) = 0.974 W/kg
SAR(1 g) = 0.397 W/kg; SAR(10 g) = 0.162 W/kg
 Maximum value of SAR (measured) = 0.742 W/kg



62_N77_100M_BPSK_135RB_69Offset_DFT-30_Back_5mm_Ch633334

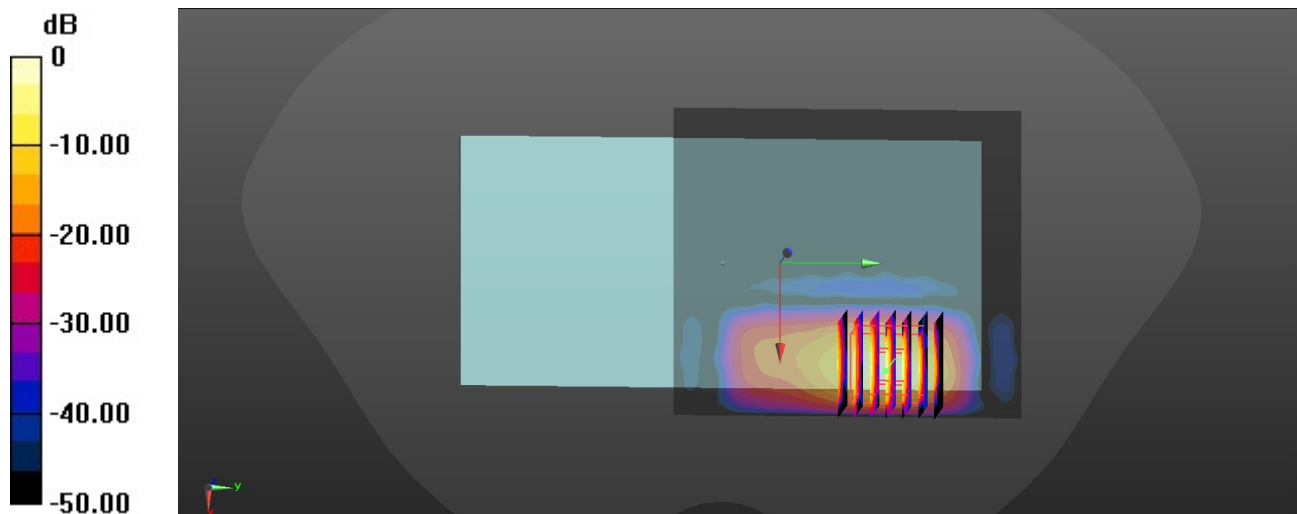
Communication System: UID 0, 5G NR (0); Frequency: 3500.01 MHz; Duty Cycle: 1:1
Medium: HSL_3500_210619 Medium parameters used: $f = 3500.01$ MHz; $\sigma = 2.909$ S/m; $\epsilon_r = 38.635$; $\rho = 1000$ kg/m³
Ambient Temperature : 23.8 °C; Liquid Temperature : 22.8 °C

DASY5 Configuration:

- Probe: EX3DV4 - SN7641; ConvF(7.4, 7.4, 7.4); Calibrated: 2021/3/15
- Sensor-Surface: 1.4mm (Mechanical Surface Detection)
- Electronics: DAE4 Sn1664; Calibrated: 2021/3/1
- Phantom: Twin-SAM V8.0 (Right); Type: QD 000 P41 AA; Serial: 2033
- Measurement SW: DASY52, Version 52.10 (4); SEMCAD X Version 14.6.14 (7483)

Ch633334/Area Scan (81x91x1): Interpolated grid: dx=1.200 mm, dy=1.200 mm
Maximum value of SAR (interpolated) = 1.60 W/kg

Ch633334/Zoom Scan (7x7x8)/Cube 0: Measurement grid: dx=5mm, dy=5mm, dz=1.4mm
Reference Value = 0.2890 V/m; Power Drift = -0.01 dB
Peak SAR (extrapolated) = 2.75 W/kg
SAR(1 g) = 0.706 W/kg; SAR(10 g) = 0.176 W/kg
Maximum value of SAR (measured) = 1.71 W/kg



0 dB = 1.71 W/kg

63_N78_100M_BPSK_135RB_0Offset_DFT-30_Back_5mm_Ch633334

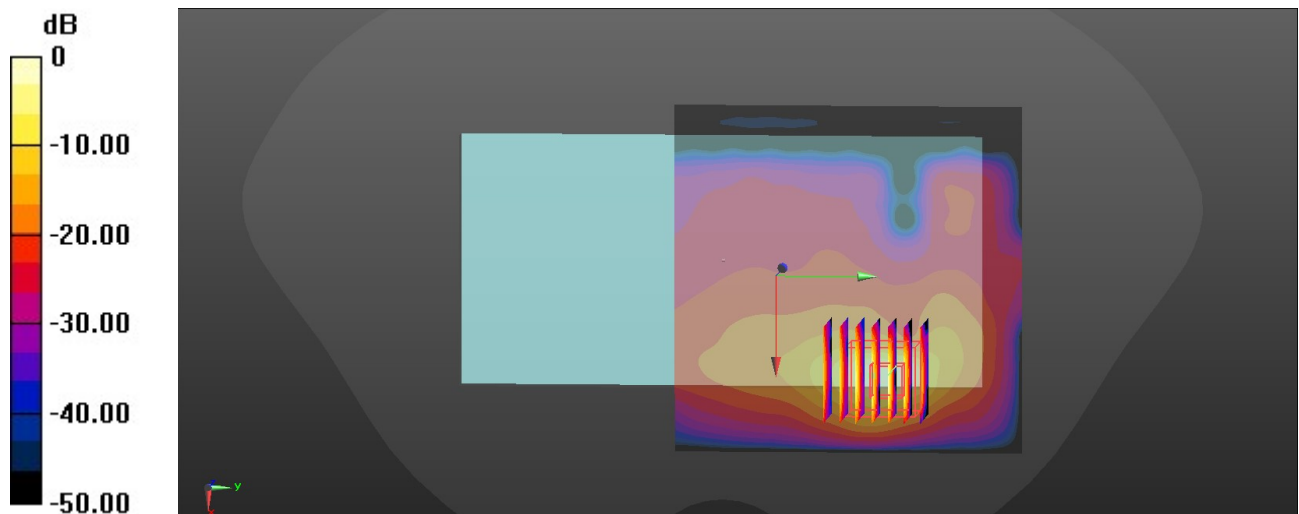
Communication System: UID 0, 5G NR (0); Frequency: 3500.01 MHz; Duty Cycle: 1:1
Medium: HSL_3500_210619 Medium parameters used: $f = 3500.01$ MHz; $\sigma = 2.909$ S/m; $\epsilon_r = 38.635$; $\rho = 1000$ kg/m³
Ambient Temperature : 23.8 °C; Liquid Temperature : 22.8 °C

DASY5 Configuration:

- Probe: EX3DV4 - SN7641; ConvF(7.4, 7.4, 7.4); Calibrated: 2021/3/15
- Sensor-Surface: 1.4mm (Mechanical Surface Detection)
- Electronics: DAE4 Sn1664; Calibrated: 2021/3/1
- Phantom: Twin-SAM V8.0 (Right); Type: QD 000 P41 AA; Serial: 2033
- Measurement SW: DASY52, Version 52.10 (4); SEMCAD X Version 14.6.14 (7483)

Ch633334/Area Scan (91x91x1): Interpolated grid: dx=1.200 mm, dy=1.200 mm
Maximum value of SAR (interpolated) = 1.28 W/kg

Ch633334/Zoom Scan (7x7x8)/Cube 0: Measurement grid: dx=5mm, dy=5mm, dz=1.4mm
Reference Value = 0 V/m; Power Drift = 0.05 dB
Peak SAR (extrapolated) = 2.87 W/kg
SAR(1 g) = 0.747 W/kg; SAR(10 g) = 0.195 W/kg
Maximum value of SAR (measured) = 1.63 W/kg



0 dB = 1.63 W/kg

64_WLAN2.4GHz_802.11b 1Mbps_Back_5mm_Ch6

Communication System: UID 0, WIFI (0); Frequency: 2437 MHz; Duty Cycle: 1:1.017

Medium: HSL_2450_210608 Medium parameters used: $f = 2437$ MHz; $\sigma = 1.82$ S/m; $\epsilon_r = 39.699$; $\rho = 1000$ kg/m³

Ambient Temperature : 23.5 °C; Liquid Temperature : 22.7 °C

DASY5 Configuration:

- Probe: EX3DV4 - SN7641; ConvF(8.29, 8.29, 8.29); Calibrated: 2021/3/15
- Sensor-Surface: 1.4mm (Mechanical Surface Detection)
- Electronics: DAE4 Sn1664; Calibrated: 2021/3/1
- Phantom: Twin-SAM V8.0 (Right); Type: QD 000 P41 AA; Serial: 2033
- Measurement SW: DASY52, Version 52.10 (4); SEMCAD X Version 14.6.14 (7483)

Ch6/Area Scan (81x111x1): Interpolated grid: dx=1.200 mm, dy=1.200 mm

Maximum value of SAR (interpolated) = 1.79 W/kg

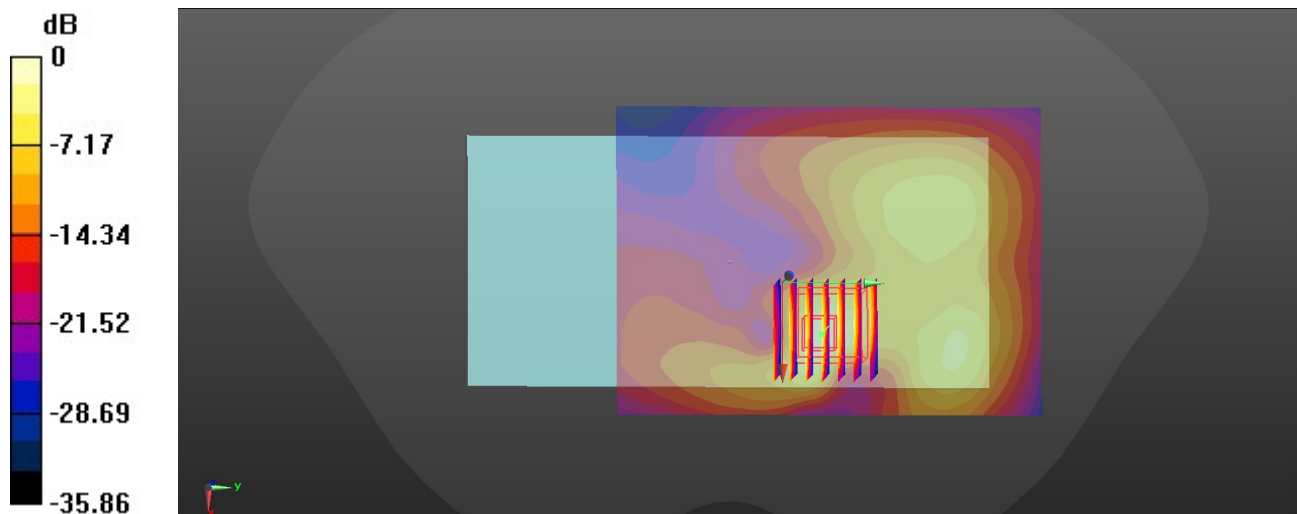
Ch6/Zoom Scan (7x7x7)/Cube 0: Measurement grid: dx=5mm, dy=5mm, dz=5mm

Reference Value = 2.886 V/m; Power Drift = 0.10 dB

Peak SAR (extrapolated) = 2.97 W/kg

SAR(1 g) = 0.758 W/kg; SAR(10 g) = 0.267 W/kg

Maximum value of SAR (measured) = 1.82 W/kg



0 dB = 1.82 W/kg

65_WLAN5GHz_802.11ac-VHT80 MCS0_Back_5mm_Ch58

Communication System: UID 0, WIFI (0); Frequency: 5290 MHz; Duty Cycle: 1:1

Medium: HSL_5250_210616 Medium parameters used: $f = 5290$ MHz; $\sigma = 4.767$ S/m; $\epsilon_r = 36.366$; $\rho = 1000$ kg/m³

Ambient Temperature : 23.7 °C; Liquid Temperature : 22.4 °C

DASY5 Configuration:

- Probe: EX3DV4 - SN7641; ConvF(5.68, 5.68, 5.68); Calibrated: 2021/3/15
- Sensor-Surface: 1.4mm (Mechanical Surface Detection)
- Electronics: DAE4 Sn1664; Calibrated: 2021/3/1
- Phantom: Twin-SAM V8.0 (Right); Type: QD 000 P41 AA; Serial: 2033
- Measurement SW: DASY52, Version 52.10 (4); SEMCAD X Version 14.6.14 (7483)

Ch58/Area Scan (91x101x1): Interpolated grid: dx=1.000 mm, dy=1.000 mm

Maximum value of SAR (interpolated) = 2.06 W/kg

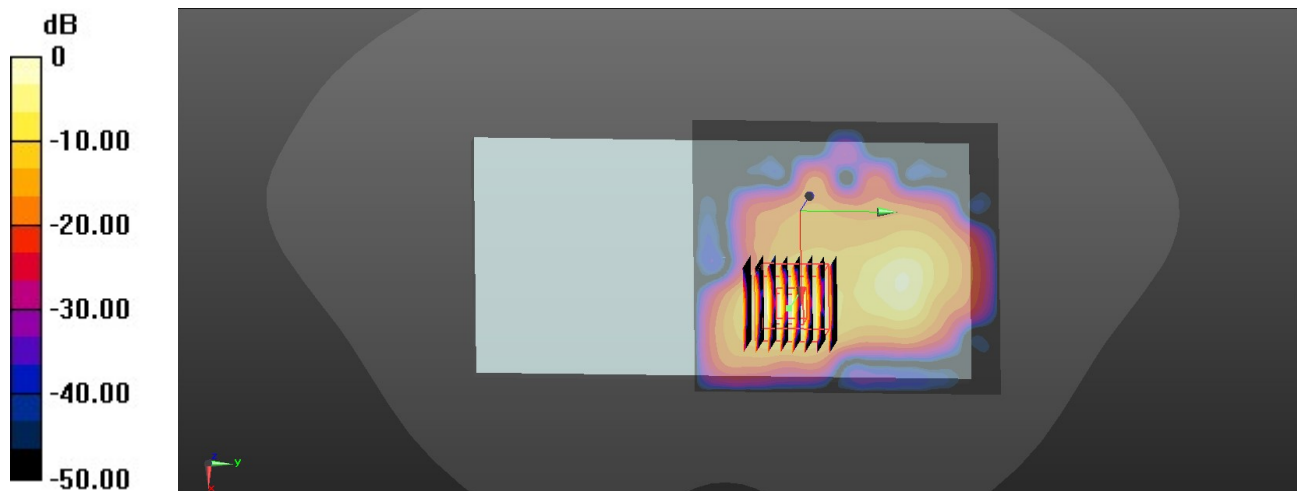
Ch58/Zoom Scan (8x8x7)/Cube 0: Measurement grid: dx=4mm, dy=4mm, dz=1.4mm

Reference Value = 0 V/m; Power Drift = 0.09 dB

Peak SAR (extrapolated) = 3.27 W/kg

SAR(1 g) = 0.794 W/kg; SAR(10 g) = 0.193 W/kg

Maximum value of SAR (measured) = 1.92 W/kg



0 dB = 1.92 W/kg

66_WLAN5GHz_802.11ac-VHT80 MCS0_Back_5mm_Ch106

Communication System: UID 0, WIFI (0); Frequency: 5530 MHz; Duty Cycle: 1:1

Medium: HSL_5600_210618 Medium parameters used: $f = 5530$ MHz; $\sigma = 4.851$ S/m; $\epsilon_r = 35.108$; $\rho = 1000$ kg/m³

Ambient Temperature : 23.6 °C; Liquid Temperature : 22.4 °C

DASY5 Configuration:

- Probe: EX3DV4 - SN7641; ConvF(5.03, 5.03, 5.03); Calibrated: 2021/3/15
- Sensor-Surface: 1.4mm (Mechanical Surface Detection)
- Electronics: DAE4 Sn1664; Calibrated: 2021/3/1
- Phantom: Twin-SAM V8.0 (Right); Type: QD 000 P41 AA; Serial: 2033
- Measurement SW: DASY52, Version 52.10 (4); SEMCAD X Version 14.6.14 (7483)

Ch106/Area Scan (101x111x1): Interpolated grid: dx=1.000 mm, dy=1.000 mm

Maximum value of SAR (interpolated) = 2.54 W/kg

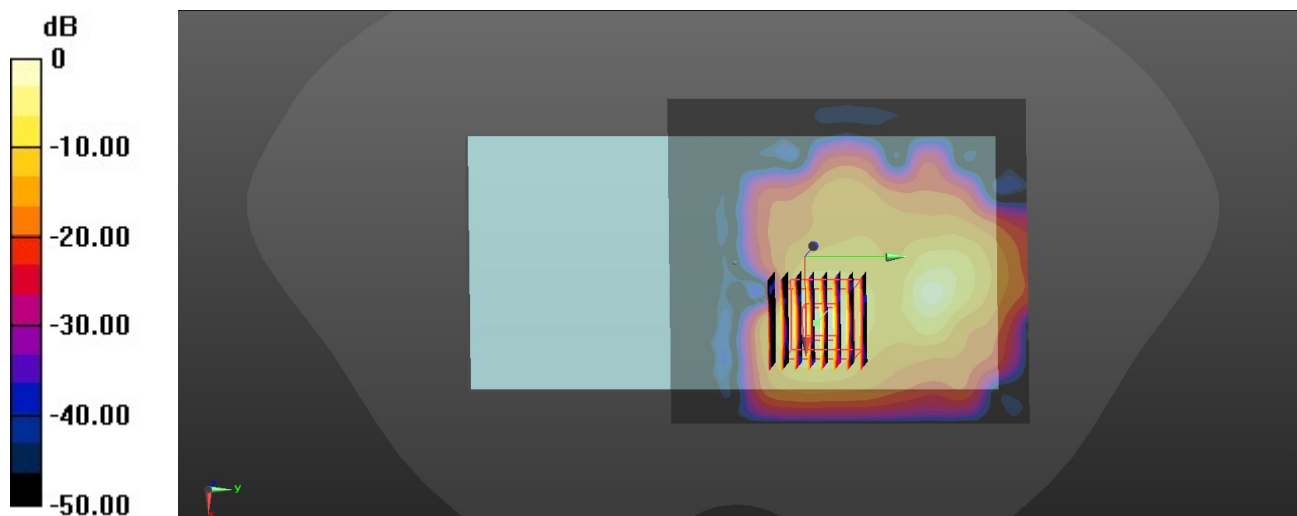
Ch106/Zoom Scan (8x8x7)/Cube 0: Measurement grid: dx=4mm, dy=4mm, dz=1.4mm

Reference Value = 0.6540 V/m; Power Drift = 0.05 dB

Peak SAR (extrapolated) = 3.99 W/kg

SAR(1 g) = 0.883 W/kg; SAR(10 g) = 0.218 W/kg

Maximum value of SAR (measured) = 2.24 W/kg



0 dB = 2.24 W/kg

67_WLAN5GHz_802.11ac-VHT80 MCS0_Back_5mm_Ch155

Communication System: UID 0, WIFI (0); Frequency: 5775 MHz; Duty Cycle: 1:1

Medium: HSL_5750_210618 Medium parameters used: $f = 5775$ MHz; $\sigma = 5.339$ S/m; $\epsilon_r = 35.52$; $\rho = 1000$ kg/m³

Ambient Temperature : 23.7 °C; Liquid Temperature : 22.5 °C

DASY5 Configuration:

- Probe: EX3DV4 - SN7641; ConvF(5.3, 5.3, 5.3); Calibrated: 2021/3/15
- Sensor-Surface: 1.4mm (Mechanical Surface Detection)
- Electronics: DAE4 Sn1664; Calibrated: 2021/3/1
- Phantom: Twin-SAM V8.0 (Right); Type: QD 000 P41 AA; Serial: 2033
- Measurement SW: DASY52, Version 52.10 (4); SEMCAD X Version 14.6.14 (7483)

Ch155/Area Scan (91x131x1): Interpolated grid: dx=1.000 mm, dy=1.000 mm

Maximum value of SAR (interpolated) = 2.18 W/kg

Ch155/Zoom Scan (9x10x7)/Cube 0: Measurement grid: dx=4mm, dy=4mm, dz=1.4mm

Reference Value = 1.224 V/m; Power Drift = 0.09 dB

Peak SAR (extrapolated) = 4.58 W/kg

SAR(1 g) = 0.872 W/kg; SAR(10 g) = 0.203 W/kg

Maximum value of SAR (measured) = 2.54 W/kg

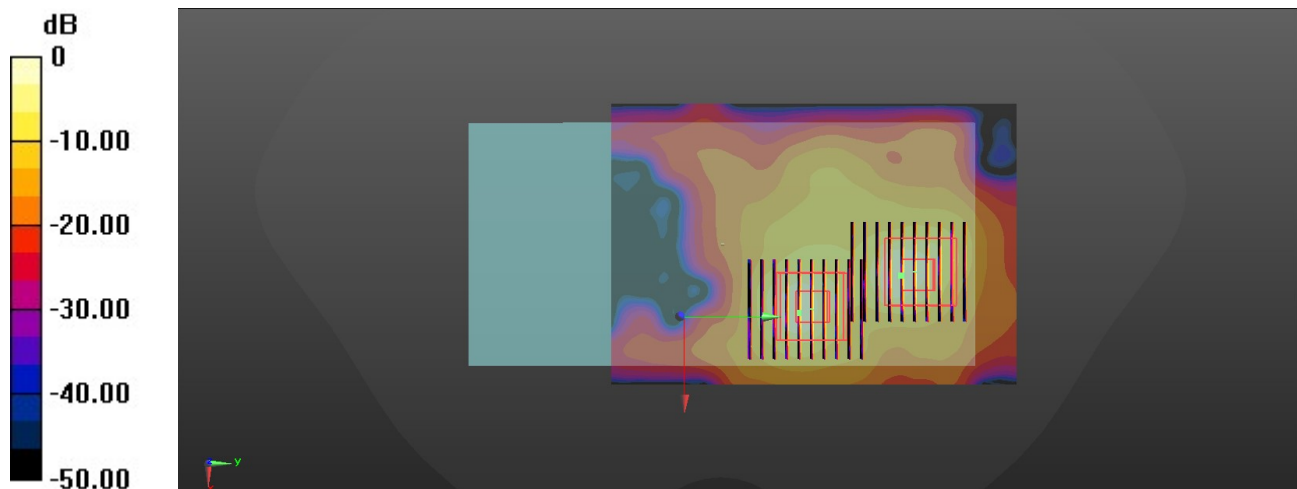
Ch155/Zoom Scan (9x10x7)/Cube 1: Measurement grid: dx=4mm, dy=4mm, dz=1.4mm

Reference Value = 1.224 V/m; Power Drift = 0.09 dB

Peak SAR (extrapolated) = 3.55 W/kg

SAR(1 g) = 0.734 W/kg; SAR(10 g) = 0.188 W/kg

Maximum value of SAR (measured) = 1.99 W/kg



0 dB = 1.99 W/kg

68_Bluetooth_DH5 1Mbps_Back_5mm_Ch39

Communication System: UID 0, Bluetooth (0); Frequency: 2441 MHz; Duty Cycle: 1:1.298

Medium: HSL_2450_210608 Medium parameters used: $f = 2441$ MHz; $\sigma = 1.824$ S/m; $\epsilon_r = 39.684$; $\rho = 1000$ kg/m³

Ambient Temperature : 23.5 °C; Liquid Temperature : 22.7 °C

DASY5 Configuration:

- Probe: EX3DV4 - SN7641; ConvF(8.29, 8.29, 8.29); Calibrated: 2021/3/15
- Sensor-Surface: 1.4mm (Mechanical Surface Detection)
- Electronics: DAE4 Sn1664; Calibrated: 2021/3/1
- Phantom: Twin-SAM V8.0 (Right); Type: QD 000 P41 AA; Serial: 2033
- Measurement SW: DASY52, Version 52.10 (4); SEMCAD X Version 14.6.14 (7483)

Ch39/Area Scan (81x151x1): Interpolated grid: $dx=1.200$ mm, $dy=1.200$ mm

Maximum value of SAR (interpolated) = 0.116 W/kg

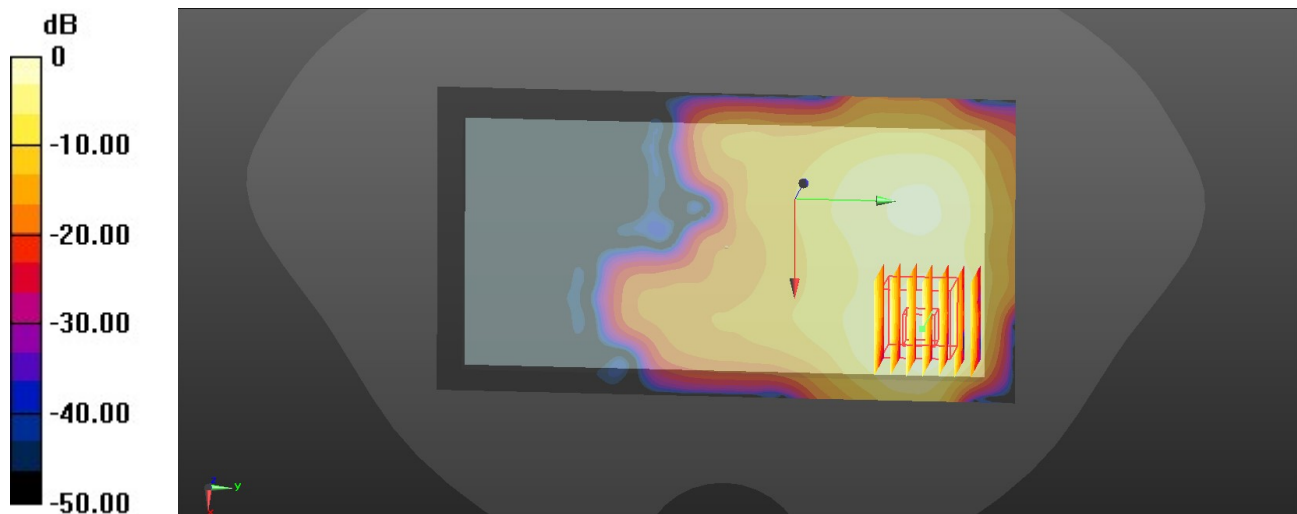
Ch39/Zoom Scan (7x7x7)/Cube 0: Measurement grid: $dx=5$ mm, $dy=5$ mm, $dz=5$ mm

Reference Value = 1.238 V/m; Power Drift = 0.03 dB

Peak SAR (extrapolated) = 0.144 W/kg

SAR(1 g) = 0.066 W/kg; SAR(10 g) = 0.029 W/kg

Maximum value of SAR (measured) = 0.114 W/kg



0 dB = 0.114 W/kg

69_GSM850_GPRS(3 Tx slots)_Back_0mm_Ch128

Communication System: UID 0, GPRS/EDGE11 (0); Frequency: 824.2 MHz; Duty Cycle: 1:2.77
 Medium: HSL_835_210602 Medium parameters used: $f = 824.2$ MHz; $\sigma = 0.906$ S/m; $\epsilon_r = 41.145$; $\rho = 1000$ kg/m³

Ambient Temperature : 23.6 °C; Liquid Temperature : 22.6 °C

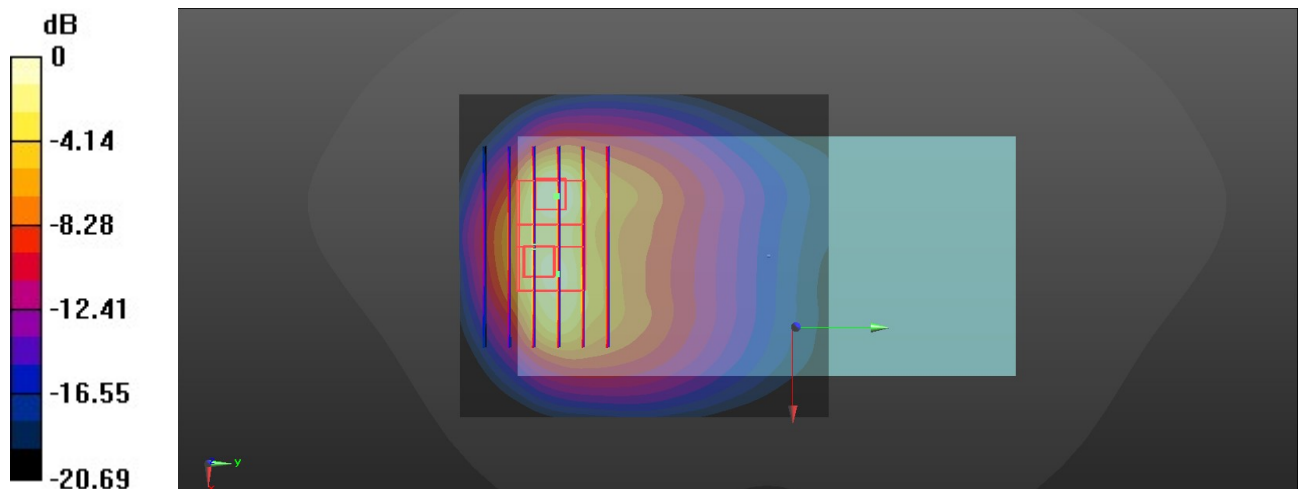
DASY5 Configuration:

- Probe: EX3DV4 - SN7641; ConvF(10.9, 10.9, 10.9); Calibrated: 2021/3/15
- Sensor-Surface: 1.4mm (Mechanical Surface Detection)
- Electronics: DAE4 Sn1664; Calibrated: 2021/3/1
- Phantom: Twin-SAM V8.0 (Right); Type: QD 000 P41 AA; Serial: 2033
- Measurement SW: DASY52, Version 52.10 (4); SEMCAD X Version 14.6.14 (7483)

Ch128/Area Scan (71x81x1): Interpolated grid: dx=1.500 mm, dy=1.500 mm
 Maximum value of SAR (interpolated) = 8.86 W/kg

Ch128/Zoom Scan (6x6x7)/Cube 0: Measurement grid: dx=8mm, dy=8mm, dz=5mm
 Reference Value = 15.81 V/m; Power Drift = 0.09 dB
 Peak SAR (extrapolated) = 11.6 W/kg
SAR(1 g) = 3.83 W/kg; SAR(10 g) = 1.8 W/kg
 Maximum value of SAR (measured) = 7.37 W/kg

Ch128/Zoom Scan (6x6x7)/Cube 1: Measurement grid: dx=8mm, dy=8mm, dz=5mm
 Reference Value = 15.81 V/m; Power Drift = 0.09 dB
 Peak SAR (extrapolated) = 10.4 W/kg
SAR(1 g) = 3.74 W/kg; SAR(10 g) = 1.76 W/kg
 Maximum value of SAR (measured) = 7.54 W/kg



0 dB = 7.54 W/kg

70_GSM1900_GPRS(2 Tx slots)_Back_0mm_Ch512

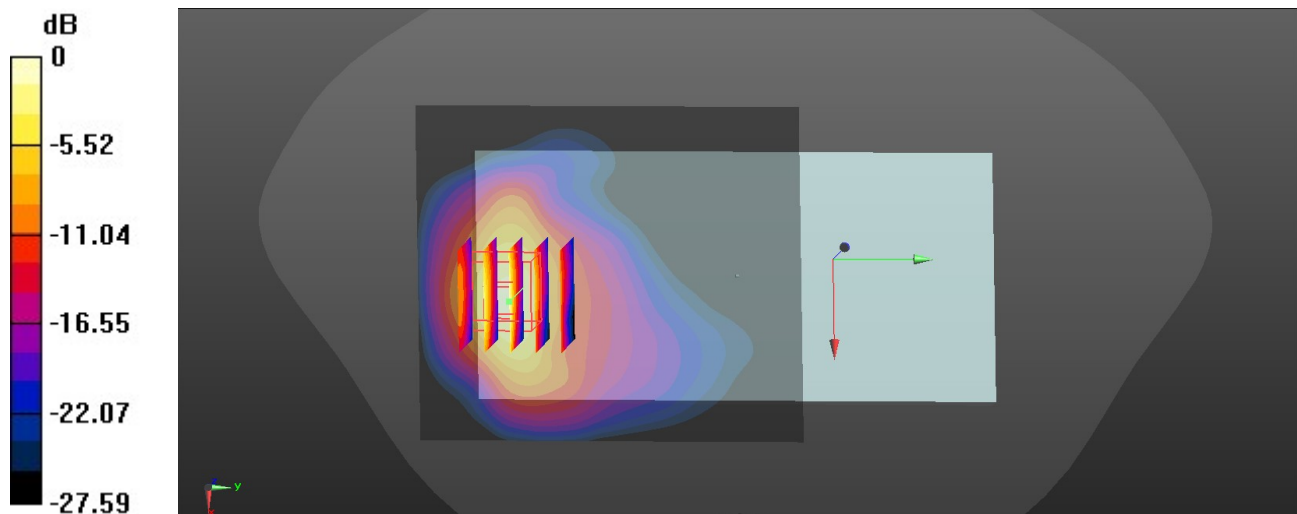
Communication System: UID 0, GPRS/EDGE10 (0); Frequency: 1850.2 MHz; Duty Cycle: 1:4.15
Medium: HSL_1900_210606 Medium parameters used: $f = 1850.2$ MHz; $\sigma = 1.381$ S/m; $\epsilon_r = 38.649$;
 $\rho = 1000$ kg/m³
Ambient Temperature : 23.4 °C; Liquid Temperature : 22.4 °C

DASY5 Configuration:

- Probe: EX3DV4 - SN7641; ConvF(9.05, 9.05, 9.05); Calibrated: 2021/3/15
- Sensor-Surface: 1.4mm (Mechanical Surface Detection)
- Electronics: DAE4 Sn1664; Calibrated: 2021/3/1
- Phantom: Twin-SAM V8.0 (Right); Type: QD 000 P41 AA; Serial: 2033
- Measurement SW: DASY52, Version 52.10 (4); SEMCAD X Version 14.6.14 (7483)

Ch512/Area Scan (71x81x1): Interpolated grid: dx=1.500 mm, dy=1.500 mm
Maximum value of SAR (interpolated) = 7.97 W/kg

Ch512/Zoom Scan (5x5x7)/Cube 0: Measurement grid: dx=8mm, dy=8mm, dz=5mm
Reference Value = 2.191 V/m; Power Drift = 0.07 dB
Peak SAR (extrapolated) = 13.8 W/kg
SAR(1 g) = 5.12 W/kg; SAR(10 g) = 2.03 W/kg
Maximum value of SAR (measured) = 9.79 W/kg



0 dB = 9.79 W/kg

71_WCDMA V_RMC 12.2Kbps_Back_0mm_Ch4233

Communication System: UID 0, UMTS (0); Frequency: 846.6 MHz; Duty Cycle: 1:1
 Medium: HSL_835_210602 Medium parameters used: $f = 846.6 \text{ MHz}$; $\sigma = 0.926 \text{ S/m}$; $\epsilon_r = 40.905$; $\rho = 1000 \text{ kg/m}^3$
 Ambient Temperature : 23.6 °C; Liquid Temperature : 22.6 °C

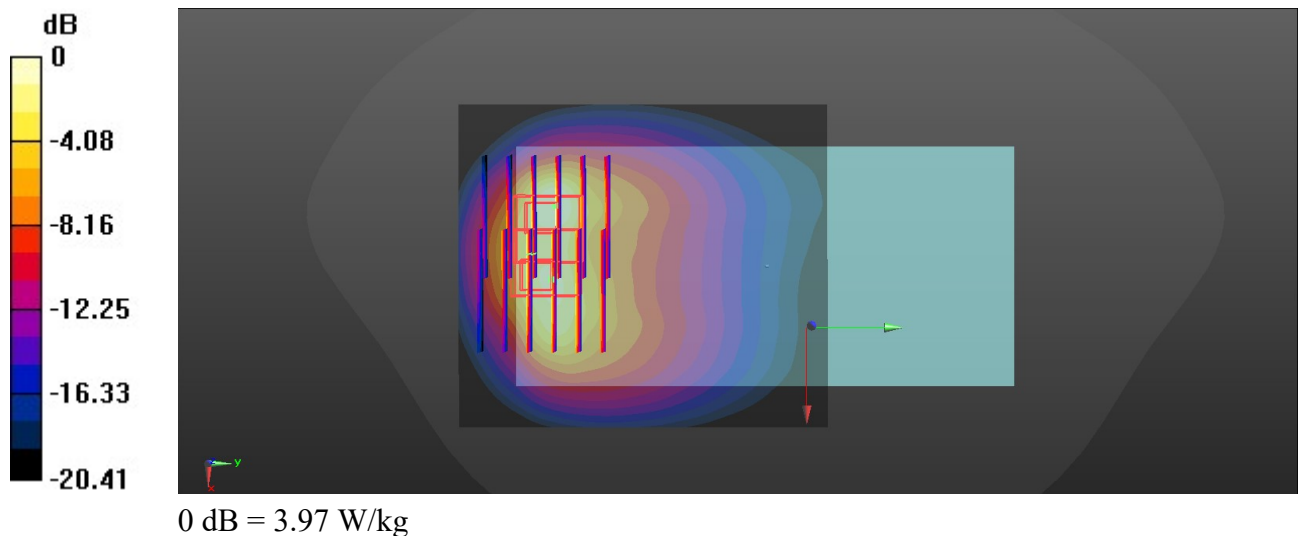
DASY5 Configuration:

- Probe: EX3DV4 - SN7641; ConvF(10.9, 10.9, 10.9); Calibrated: 2021/3/15
- Sensor-Surface: 1.4mm (Mechanical Surface Detection)
- Electronics: DAE4 Sn1664; Calibrated: 2021/3/1
- Phantom: Twin-SAM V8.0 (Right); Type: QD 000 P41 AA; Serial: 2033
- Measurement SW: DASY52, Version 52.10 (4); SEMCAD X Version 14.6.14 (7483)

Ch4233/Area Scan (71x81x1): Interpolated grid: $dx=1.500 \text{ mm}$, $dy=1.500 \text{ mm}$
 Maximum value of SAR (interpolated) = 4.52 W/kg

Ch4233/Zoom Scan (6x6x7)/Cube 0: Measurement grid: $dx=8\text{mm}$, $dy=8\text{mm}$, $dz=5\text{mm}$
 Reference Value = 10.22 V/m; Power Drift = 0.05 dB
 Peak SAR (extrapolated) = 7.85 W/kg
SAR(1 g) = 2.3 W/kg; SAR(10 g) = 1.05 W/kg
 Maximum value of SAR (measured) = 4.63 W/kg

Ch4233/Zoom Scan (6x6x7)/Cube 1: Measurement grid: $dx=8\text{mm}$, $dy=8\text{mm}$, $dz=5\text{mm}$
 Reference Value = 10.22 V/m; Power Drift = 0.05 dB
 Peak SAR (extrapolated) = 5.69 W/kg
SAR(1 g) = 2.05 W/kg; SAR(10 g) = 1.01 W/kg
 Maximum value of SAR (measured) = 3.97 W/kg



72_WCDMA IV_RMC 12.2Kbps_Back_0mm_Ch1513

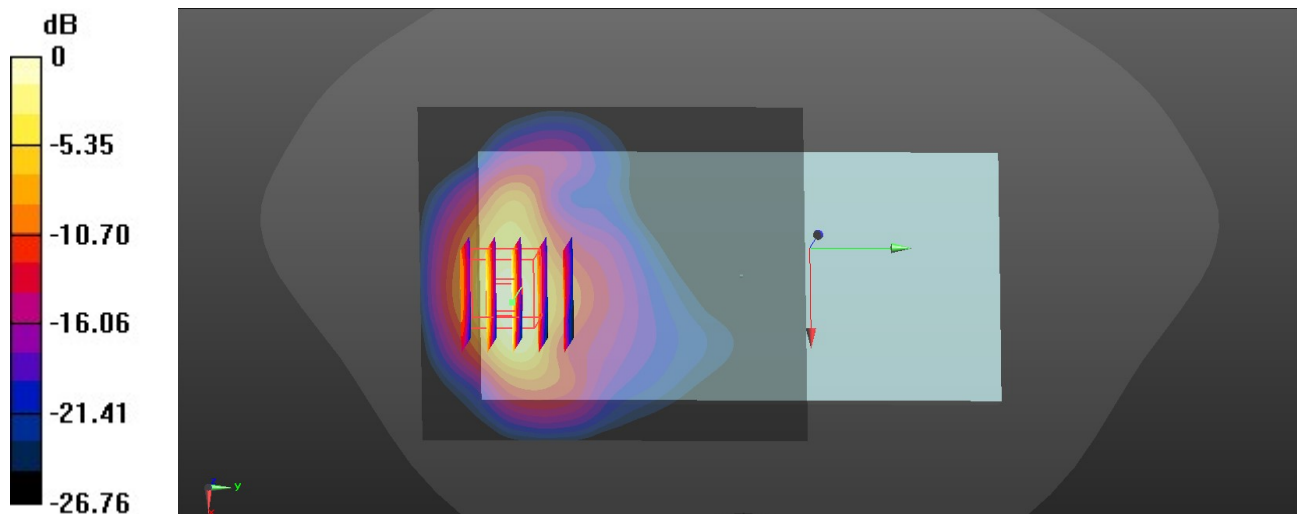
Communication System: UID 0, UMTS (0); Frequency: 1752.6 MHz; Duty Cycle: 1:1
Medium: HSL_1750_210604 Medium parameters used: $f = 1753$ MHz; $\sigma = 1.411$ S/m; $\epsilon_r = 39.789$; $\rho = 1000$ kg/m³
Ambient Temperature : 23.5 °C; Liquid Temperature : 22.6 °C

DASY5 Configuration:

- Probe: EX3DV4 - SN7641; ConvF(9.41, 9.41, 9.41); Calibrated: 2021/3/15
- Sensor-Surface: 1.4mm (Mechanical Surface Detection)
- Electronics: DAE4 Sn1664; Calibrated: 2021/3/1
- Phantom: Twin-SAM V8.0 (Right); Type: QD 000 P41 AA; Serial: 2033
- Measurement SW: DASY52, Version 52.10 (4); SEMCAD X Version 14.6.14 (7483)

Ch1513/Area Scan (71x81x1): Interpolated grid: dx=1.500 mm, dy=1.500 mm
Maximum value of SAR (interpolated) = 9.37 W/kg

Ch1513/Zoom Scan (5x5x7)/Cube 0: Measurement grid: dx=8mm, dy=8mm, dz=5mm
Reference Value = 0 V/m; Power Drift = 0.09 dB
Peak SAR (extrapolated) = 15.0 W/kg
SAR(1 g) = 5.36 W/kg; SAR(10 g) = 2.22 W/kg
Maximum value of SAR (measured) = 10.8 W/kg



0 dB = 10.8 W/kg

73_WCDMA II_RMC 12.2Kbps_Back_0mm_Ch9538

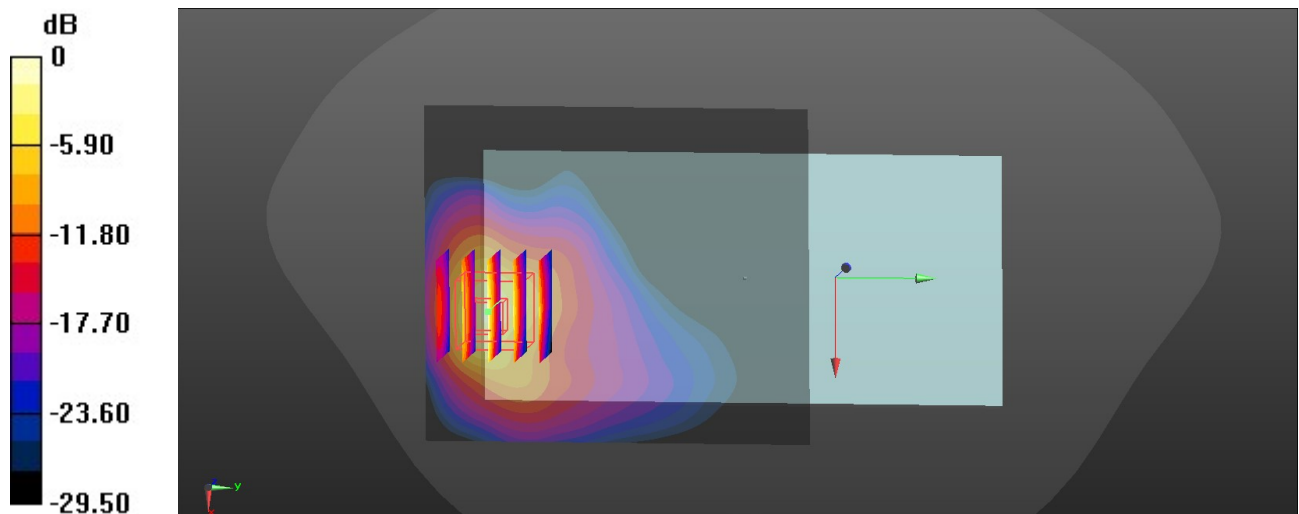
Communication System: UID 0, UMTS (0); Frequency: 1907.6 MHz; Duty Cycle: 1:1
Medium: HSL_1900_210606 Medium parameters used: $f = 1908$ MHz; $\sigma = 1.459$ S/m; $\epsilon_r = 39.181$; $\rho = 1000$ kg/m³
Ambient Temperature : 23.4 °C; Liquid Temperature : 22.4 °C

DASY5 Configuration:

- Probe: EX3DV4 - SN7641; ConvF(9.05, 9.05, 9.05); Calibrated: 2021/3/15
- Sensor-Surface: 1.4mm (Mechanical Surface Detection)
- Electronics: DAE4 Sn1664; Calibrated: 2021/3/1
- Phantom: Twin-SAM V8.0 (Right); Type: QD 000 P41 AA; Serial: 2033
- Measurement SW: DASY52, Version 52.10 (4); SEMCAD X Version 14.6.14 (7483)

Ch9538/Area Scan (71x81x1): Interpolated grid: dx=1.500 mm, dy=1.500 mm
Maximum value of SAR (interpolated) = 8.30 W/kg

Ch9538/Zoom Scan (5x5x7)/Cube 0: Measurement grid: dx=8mm, dy=8mm, dz=5mm
Reference Value = 0.8730 V/m; Power Drift = 0.09 dB
Peak SAR (extrapolated) = 16.0 W/kg
SAR(1 g) = 5.86 W/kg; SAR(10 g) = 2.27 W/kg
Maximum value of SAR (measured) = 12.2 W/kg



0 dB = 12.2 W/kg

74_LTE Band 26_15M_QPSK_1RB_37Offset_Back_0mm_Ch26865

Communication System: UID 0, LTE (0); Frequency: 831.5 MHz; Duty Cycle: 1:1

Medium: HSL_835_210602 Medium parameters used: $f = 831.5$ MHz; $\sigma = 0.975$ S/m; $\epsilon_r = 39.735$; $\rho = 1000$ kg/m³

Ambient Temperature : 23.6 °C; Liquid Temperature : 22.6 °C

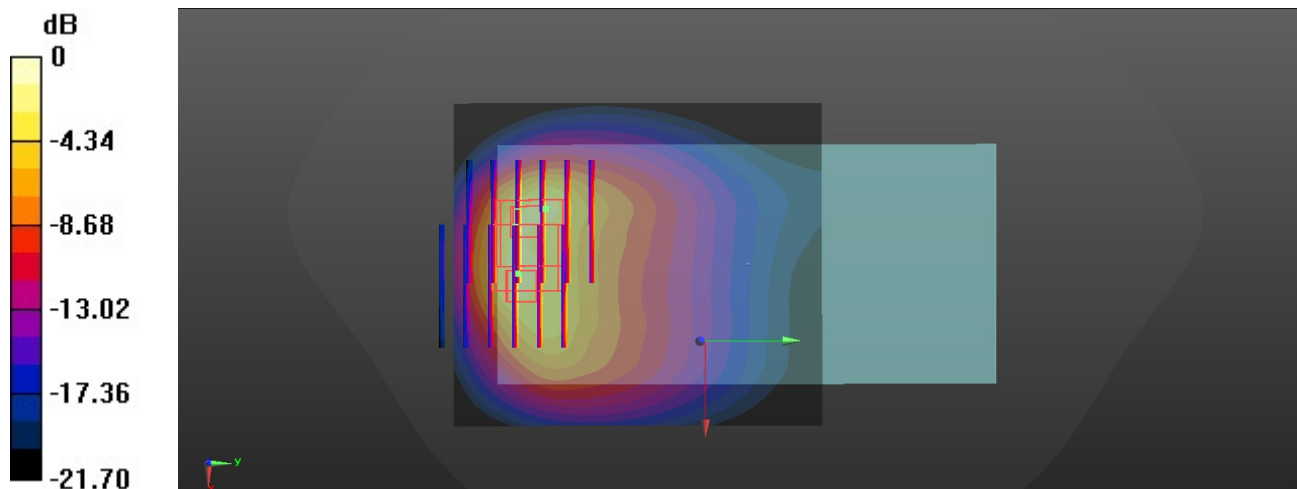
DASY5 Configuration:

- Probe: EX3DV4 - SN7641; ConvF(10.9, 10.9, 10.9); Calibrated: 2021/3/15
- Sensor-Surface: 1.4mm (Mechanical Surface Detection)
- Electronics: DAE4 Sn1664; Calibrated: 2021/3/1
- Phantom: Twin-SAM V8.0 (Right); Type: QD 000 P41 AA; Serial: 2033
- Measurement SW: DASY52, Version 52.10 (4); SEMCAD X Version 14.6.14 (7483)

Ch26865/Area Scan (71x81x1): Interpolated grid: dx=1.500 mm, dy=1.500 mm
Maximum value of SAR (interpolated) = 3.95 W/kg

Ch26865/Zoom Scan (6x6x7)/Cube 0: Measurement grid: dx=8mm, dy=8mm, dz=5mm
Reference Value = 0.8800 V/m; Power Drift = 0.03 dB
Peak SAR (extrapolated) = 12.4 W/kg
SAR(1 g) = 3.36 W/kg; SAR(10 g) = 1.51 W/kg
Maximum value of SAR (measured) = 7.32 W/kg

Ch26865/Zoom Scan (6x6x7)/Cube 1: Measurement grid: dx=8mm, dy=8mm, dz=5mm
Reference Value = 0.8800 V/m; Power Drift = 0.03 dB
Peak SAR (extrapolated) = 10.3 W/kg
SAR(1 g) = 3.08 W/kg; SAR(10 g) = 1.48 W/kg
Maximum value of SAR (measured) = 6.46 W/kg



0 dB = 6.46 W/kg