

36_LTE Band 42_20M_QPSK_50RB_24Offset_Back_5mm_Ch42190

Communication System: UID 0, LTE (0); Frequency: 3460 MHz; Duty Cycle: 1:1.59

Medium: HSL_3500_210619 Medium parameters used: $f = 3460$ MHz; $\sigma = 2.882$ S/m; $\epsilon_r = 38.674$; $\rho = 1000$ kg/m³

Ambient Temperature : 23.8 °C; Liquid Temperature : 22.8 °C

DASY5 Configuration:

- Probe: EX3DV4 - SN7641; ConvF(7.4, 7.4, 7.4); Calibrated: 2021/3/15
- Sensor-Surface: 1.4mm (Mechanical Surface Detection)
- Electronics: DAE4 Sn1664; Calibrated: 2021/3/1
- Phantom: Twin-SAM V8.0 (Right); Type: QD 000 P41 AA; Serial: 2033
- Measurement SW: DASY52, Version 52.10 (4); SEMCAD X Version 14.6.14 (7483)

Ch42190/Area Scan (81x101x1): Interpolated grid: dx=1.200 mm, dy=1.200 mm

Maximum value of SAR (interpolated) = 2.00 W/kg

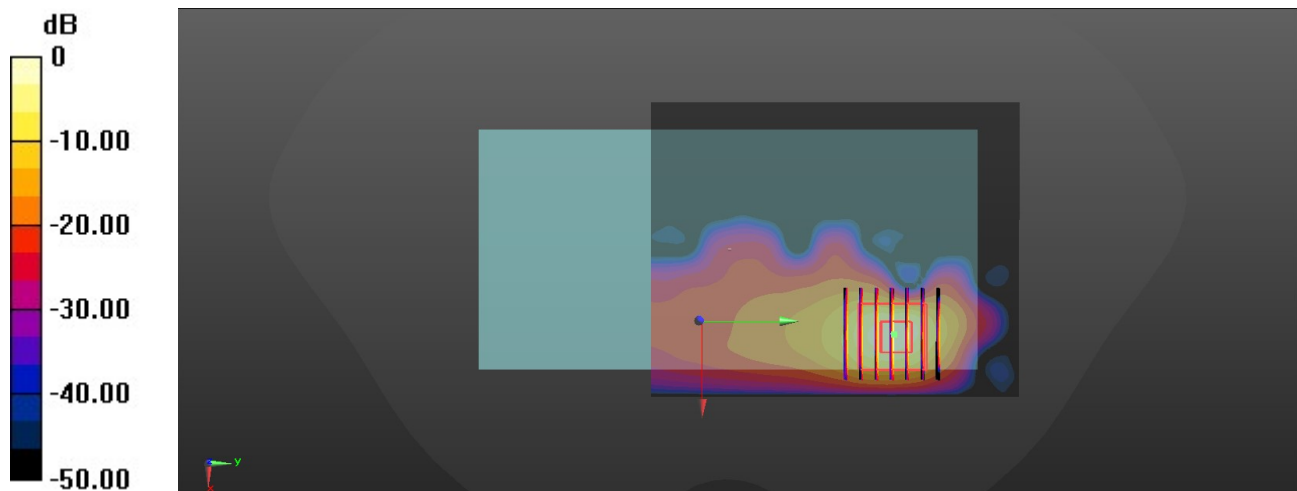
Ch42190/Zoom Scan (7x7x8)/Cube 0: Measurement grid: dx=5mm, dy=5mm, dz=1.4mm

Reference Value = 0 V/m; Power Drift = -0.1 dB

Peak SAR (extrapolated) = 3.00 W/kg

SAR(1 g) = 0.818 W/kg; SAR(10 g) = 0.220 W/kg

Maximum value of SAR (measured) = 1.91 W/kg



0 dB = 1.91 W/kg

37_N5_20M_BPSK_1RB_1Offset_DFT-15_Top Side_5mm_Ch167300

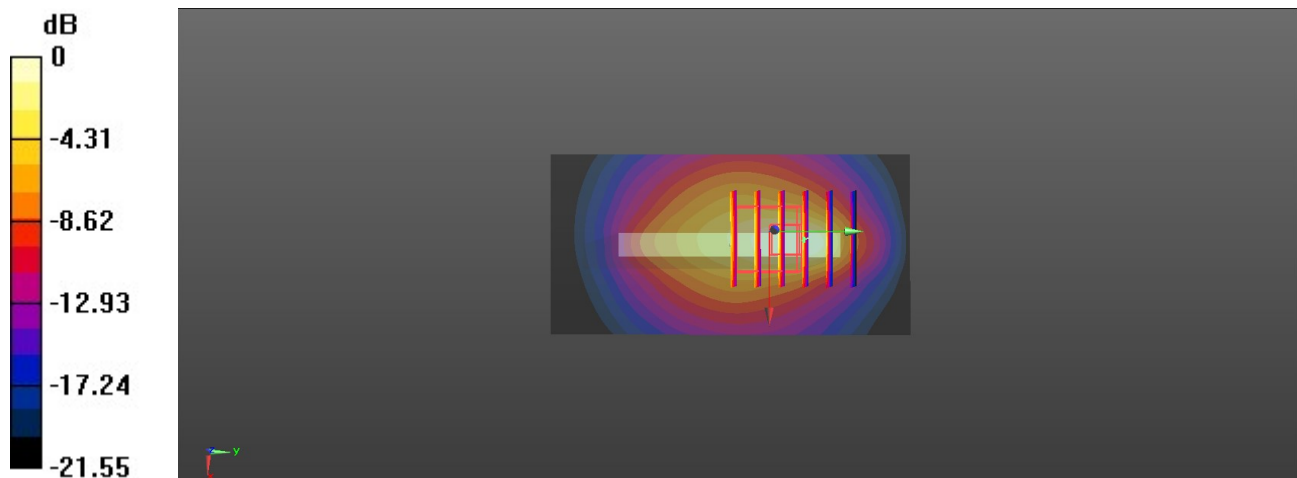
Communication System: UID 0, 5GNR (0); Frequency: 836.5 MHz; Duty Cycle: 1:1
Medium: HSL_835_210706 Medium parameters used: $f = 836.5$ MHz; $\sigma = 0.93$ S/m; $\epsilon_r = 41.777$; $\rho = 1000$ kg/m³
Ambient Temperature : 23.6 °C; Liquid Temperature : 22.6 °C

DASY5 Configuration:

- Probe: EX3DV4 - SN7641; ConvF(10.9, 10.9, 10.9); Calibrated: 2021/3/15
- Sensor-Surface: 1.4mm (Mechanical Surface Detection)
- Electronics: DAE4 Sn1664; Calibrated: 2021/3/1
- Phantom: Twin-SAM V8.0 (Right); Type: QD 000 P41 AA; Serial: 2033
- Measurement SW: DASY52, Version 52.10 (4); SEMCAD X Version 14.6.14 (7483)

Ch167300/Area Scan (41x81x1): Interpolated grid: dx=1.500 mm, dy=1.500 mm
Maximum value of SAR (interpolated) = 1.49 W/kg

Ch167300/Zoom Scan (5x6x7)/Cube 0: Measurement grid: dx=8mm, dy=8mm, dz=5mm
Reference Value = 31.63 V/m; Power Drift = -0.06 dB
Peak SAR (extrapolated) = 2.06 W/kg
SAR(1 g) = 0.756 W/kg; SAR(10 g) = 0.387 W/kg
Maximum value of SAR (measured) = 1.48 W/kg



0 dB = 1.49 W/kg

38_N66_20M_BPSK_1RB_53Offset_DFT-15_Top Side_5mm_Ch354000

Communication System: UID 0, 5G NR (0); Frequency: 1770 MHz; Duty Cycle: 1:1

Medium: HSL_1750_210604 Medium parameters used: $f = 1770$ MHz; $\sigma = 1.373$ S/m; $\epsilon_r = 41.368$; $\rho = 1000$ kg/m³

Ambient Temperature : 23.5 °C; Liquid Temperature : 22.6 °C

DASY5 Configuration:

- Probe: EX3DV4 - SN7641; ConvF(9.41, 9.41, 9.41); Calibrated: 2021/3/15
- Sensor-Surface: 1.4mm (Mechanical Surface Detection)
- Electronics: DAE4 Sn1664; Calibrated: 2021/3/1
- Phantom: Twin-SAM V8.0 (Right); Type: QD 000 P41 AA; Serial: 2033
- Measurement SW: DASY52, Version 52.10 (4); SEMCAD X Version 14.6.14 (7483)

Ch354000/Area Scan (41x81x1): Interpolated grid: dx=1.500 mm, dy=1.500 mm

Maximum value of SAR (interpolated) = 0.892 W/kg

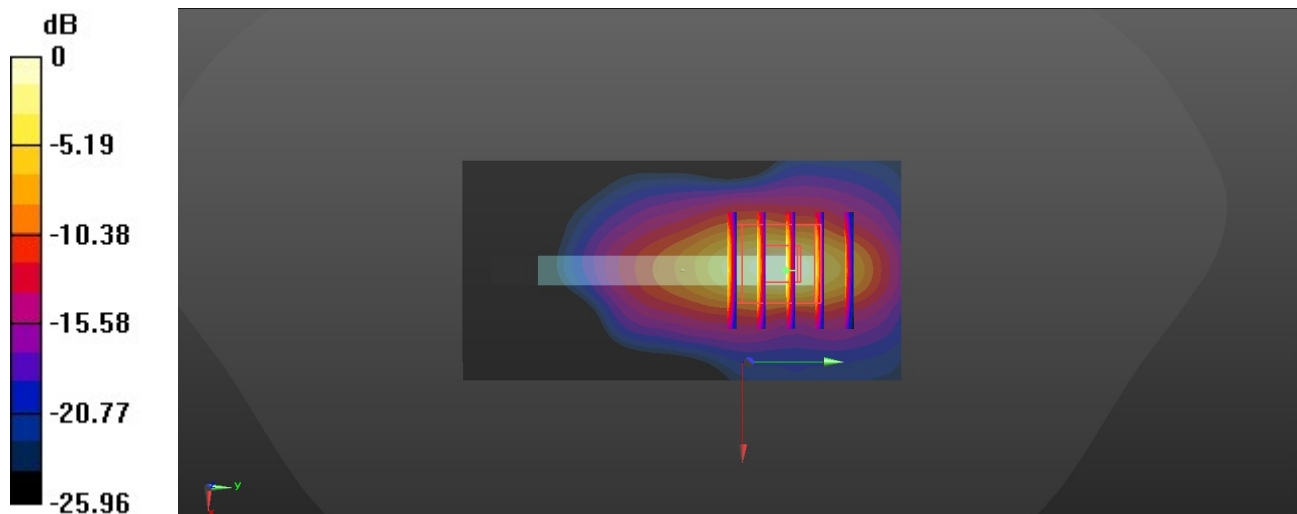
Ch354000/Zoom Scan (5x5x7)/Cube 0: Measurement grid: dx=8mm, dy=8mm, dz=5mm

Reference Value = 10.33 V/m; Power Drift = 0.15 dB

Peak SAR (extrapolated) = 1.21 W/kg

SAR(1 g) = 0.662 W/kg; SAR(10 g) = 0.267 W/kg

Maximum value of SAR (measured) = 0.903 W/kg



0 dB = 0.903 W/kg

39_N7_20M_BPSK_1RB_53Offset_DFT-15_Top Side_5mm_Ch512000

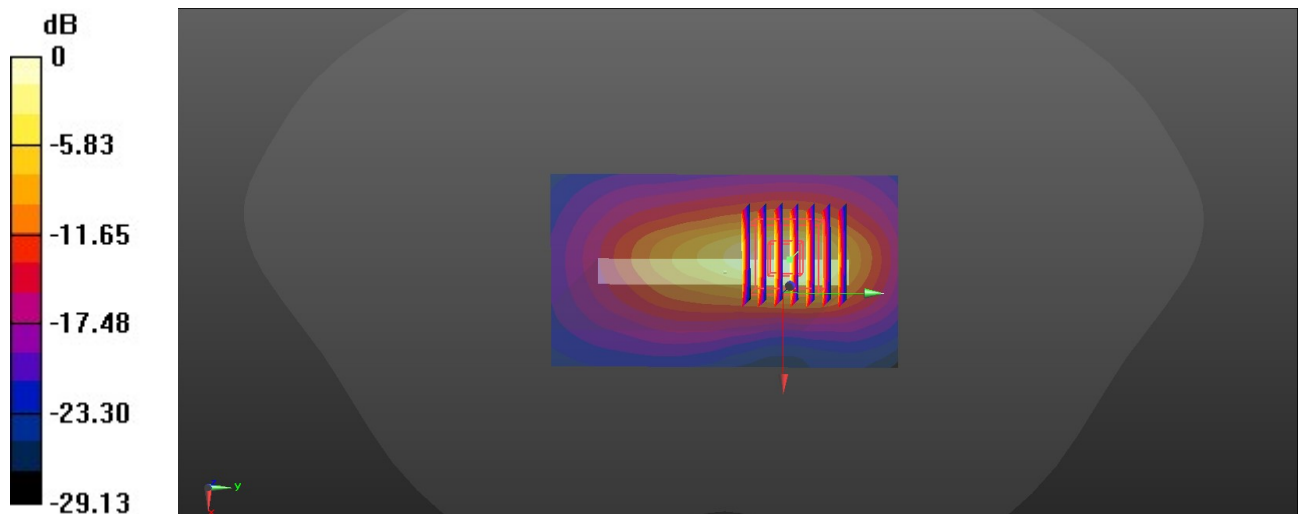
Communication System: UID 0, 5G NR (0); Frequency: 2560 MHz; Duty Cycle: 1:1
Medium: HSL_2600_210610 Medium parameters used: $f = 2560$ MHz; $\sigma = 2.01$ S/m; $\epsilon_r = 37.49$; $\rho = 1000$ kg/m³
Ambient Temperature : 23.5 °C; Liquid Temperature : 22.6 °C

DASY5 Configuration:

- Probe: EX3DV4 - SN7641; ConvF(7.94, 7.94, 7.94); Calibrated: 2021/3/15
- Sensor-Surface: 1.4mm (Mechanical Surface Detection)
- Electronics: DAE4 Sn1664; Calibrated: 2021/3/1
- Phantom: Twin-SAM V8.0 (Right); Type: QD 000 P41 AA; Serial: 2033
- Measurement SW: DASY52, Version 52.10 (4); SEMCAD X Version 14.6.14 (7483)

Ch512000/Area Scan (51x91x1): Interpolated grid: dx=1.200 mm, dy=1.200 mm
Maximum value of SAR (interpolated) = 1.47 W/kg

Ch512000/Zoom Scan (7x7x7)/Cube 0: Measurement grid: dx=5mm, dy=5mm, dz=5mm
Reference Value = 16.57 V/m; Power Drift = 0.06 dB
Peak SAR (extrapolated) = 2.09 W/kg
SAR(1 g) = 0.756 W/kg; SAR(10 g) = 0.293 W/kg
Maximum value of SAR (measured) = 1.56 W/kg



0 dB = 1.56 W/kg

40_N77_100M_BPSK_135RB_69Offset_DFT-30_Back_5mm_Ch633334

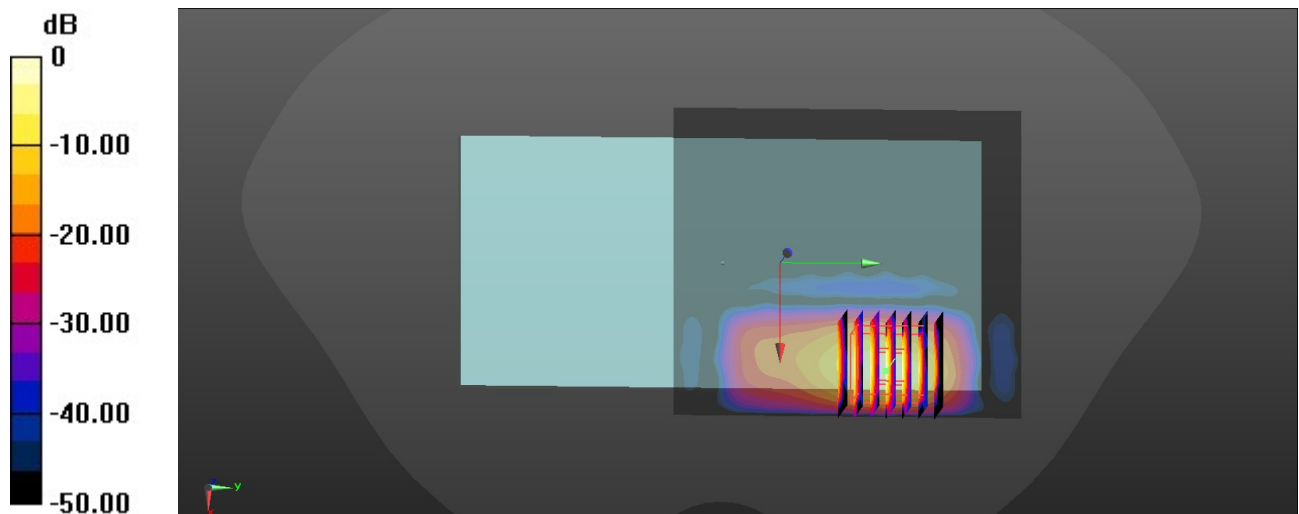
Communication System: UID 0, 5G NR (0); Frequency: 3500.01 MHz; Duty Cycle: 1:1
Medium: HSL_3500_210619 Medium parameters used: $f = 3500.01$ MHz; $\sigma = 2.909$ S/m; $\epsilon_r = 38.635$; $\rho = 1000$ kg/m³
Ambient Temperature : 23.8 °C; Liquid Temperature : 22.8 °C

DASY5 Configuration:

- Probe: EX3DV4 - SN7641; ConvF(7.4, 7.4, 7.4); Calibrated: 2021/3/15
- Sensor-Surface: 1.4mm (Mechanical Surface Detection)
- Electronics: DAE4 Sn1664; Calibrated: 2021/3/1
- Phantom: Twin-SAM V8.0 (Right); Type: QD 000 P41 AA; Serial: 2033
- Measurement SW: DASY52, Version 52.10 (4); SEMCAD X Version 14.6.14 (7483)

Ch633334/Area Scan (81x91x1): Interpolated grid: dx=1.200 mm, dy=1.200 mm
Maximum value of SAR (interpolated) = 1.60 W/kg

Ch633334/Zoom Scan (7x7x8)/Cube 0: Measurement grid: dx=5mm, dy=5mm, dz=1.4mm
Reference Value = 0.2890 V/m; Power Drift = -0.01 dB
Peak SAR (extrapolated) = 2.75 W/kg
SAR(1 g) = 0.706 W/kg; SAR(10 g) = 0.176 W/kg
Maximum value of SAR (measured) = 1.71 W/kg



0 dB = 1.71 W/kg

41_N78_100M_BPSK_135RB_0Offset_DFT-30_Back_5mm_Ch633334

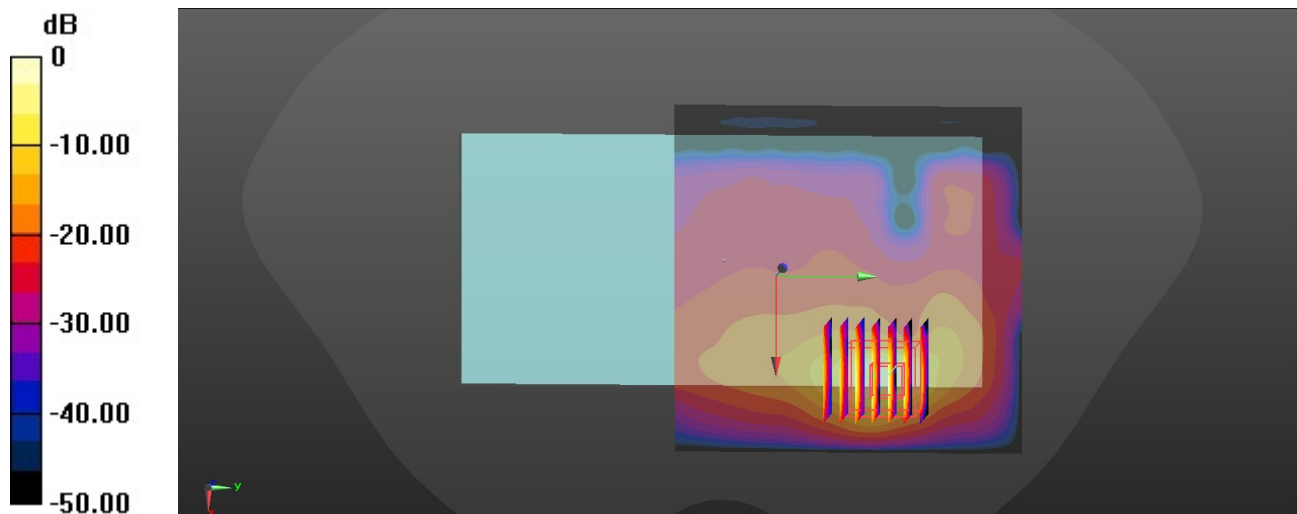
Communication System: UID 0, 5G NR (0); Frequency: 3500.01 MHz; Duty Cycle: 1:1
Medium: HSL_3500_210619 Medium parameters used: $f = 3500.01$ MHz; $\sigma = 2.909$ S/m; $\epsilon_r = 38.635$; $\rho = 1000$ kg/m³
Ambient Temperature : 23.8 °C; Liquid Temperature : 22.8 °C

DASY5 Configuration:

- Probe: EX3DV4 - SN7641; ConvF(7.4, 7.4, 7.4); Calibrated: 2021/3/15
- Sensor-Surface: 1.4mm (Mechanical Surface Detection)
- Electronics: DAE4 Sn1664; Calibrated: 2021/3/1
- Phantom: Twin-SAM V8.0 (Right); Type: QD 000 P41 AA; Serial: 2033
- Measurement SW: DASY52, Version 52.10 (4); SEMCAD X Version 14.6.14 (7483)

Ch633334/Area Scan (91x91x1): Interpolated grid: dx=1.200 mm, dy=1.200 mm
Maximum value of SAR (interpolated) = 1.28 W/kg

Ch633334/Zoom Scan (7x7x8)/Cube 0: Measurement grid: dx=5mm, dy=5mm, dz=1.4mm
Reference Value = 0 V/m; Power Drift = 0.05 dB
Peak SAR (extrapolated) = 2.87 W/kg
SAR(1 g) = 0.747 W/kg; SAR(10 g) = 0.195 W/kg
Maximum value of SAR (measured) = 1.63 W/kg



0 dB = 1.63 W/kg

42_WLAN2.4GHz_802.11b 1Mbps_Back_5mm_Ch1

Communication System: UID 0, WIFI (0); Frequency: 2412 MHz; Duty Cycle: 1:1.017

Medium: HSL_2450_210608 Medium parameters used: $f = 2412$ MHz; $\sigma = 1.791$ S/m; $\epsilon_r = 39.777$; $\rho = 1000$ kg/m³

Ambient Temperature : 23.5 °C; Liquid Temperature : 22.7 °C

DASY5 Configuration:

- Probe: EX3DV4 - SN7641; ConvF(8.29, 8.29, 8.29); Calibrated: 2021/3/15
- Sensor-Surface: 1.4mm (Mechanical Surface Detection)
- Electronics: DAE4 Sn1664; Calibrated: 2021/3/1
- Phantom: Twin-SAM V8.0 (Right); Type: QD 000 P41 AA; Serial: 2033
- Measurement SW: DASY52, Version 52.10 (4); SEMCAD X Version 14.6.14 (7483)

Ch1/Area Scan (81x101x1): Interpolated grid: dx=1.200 mm, dy=1.200 mm

Maximum value of SAR (interpolated) = 0.523 W/kg

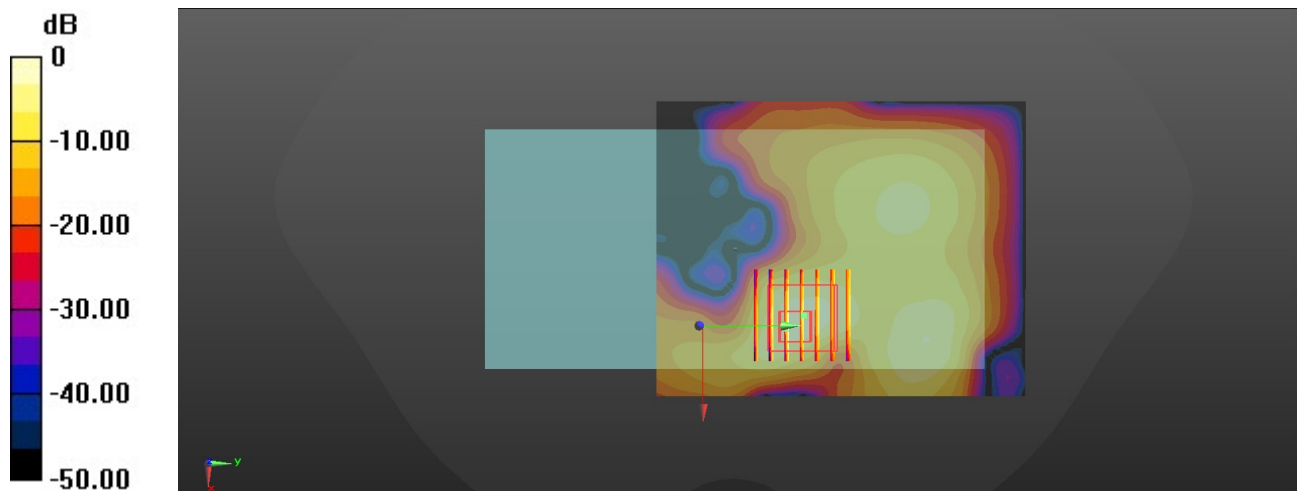
Ch1/Zoom Scan (7x7x7)/Cube 0: Measurement grid: dx=5mm, dy=5mm, dz=5mm

Reference Value = 0.4660 V/m; Power Drift = 0.03 dB

Peak SAR (extrapolated) = 0.874 W/kg

SAR(1 g) = 0.269 W/kg; SAR(10 g) = 0.095 W/kg

Maximum value of SAR (measured) = 0.538 W/kg



0 dB = 0.538 W/kg

43_WLAN5GHz_802.11ac-VHT80 MCS0_Back_5mm_Ch42

Communication System: UID 0, WIFI (0); Frequency: 5210 MHz; Duty Cycle: 1:1

Medium: HSL_5250_210616 Medium parameters used: $f = 5210$ MHz; $\sigma = 4.671$ S/m; $\epsilon_r = 36.484$; $\rho = 1000$ kg/m³

Ambient Temperature : 23.7 °C; Liquid Temperature : 22.4 °C

DASY5 Configuration:

- Probe: EX3DV4 - SN7641; ConvF(5.68, 5.68, 5.68); Calibrated: 2021/3/15
- Sensor-Surface: 1.4mm (Mechanical Surface Detection)
- Electronics: DAE4 Sn1664; Calibrated: 2021/3/1
- Phantom: Twin-SAM V8.0 (Right); Type: QD 000 P41 AA; Serial: 2033
- Measurement SW: DASY52, Version 52.10 (4); SEMCAD X Version 14.6.14 (7483)

Ch42/Area Scan (101x111x1): Interpolated grid: dx=1.000 mm, dy=1.000 mm

Maximum value of SAR (interpolated) = 0.942 W/kg

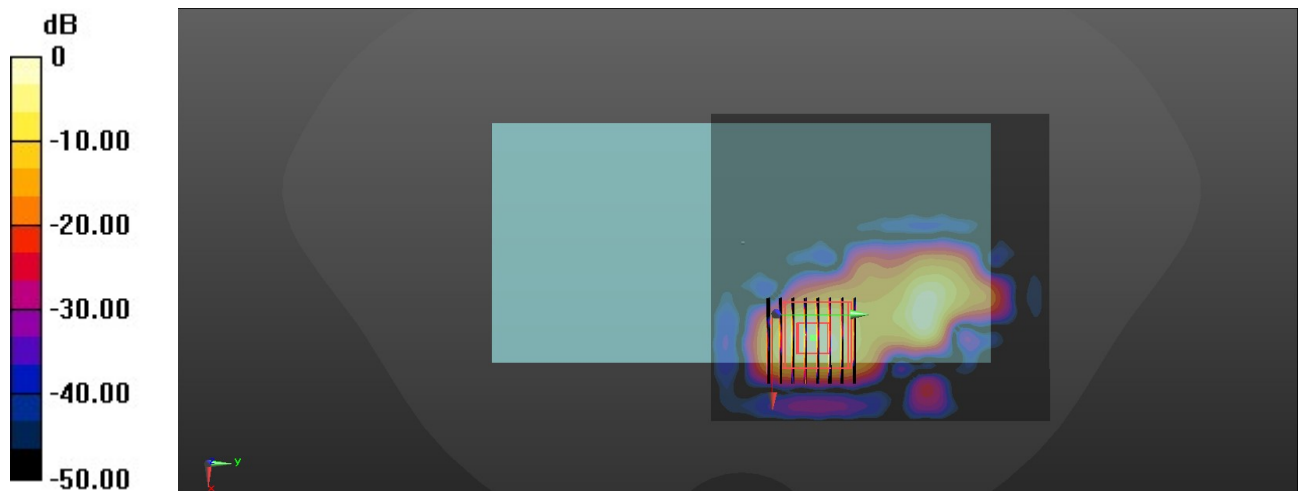
Ch42/Zoom Scan (8x8x7)/Cube 0: Measurement grid: dx=4mm, dy=4mm, dz=1.4mm

Reference Value = 0 V/m; Power Drift = 0.11 dB

Peak SAR (extrapolated) = 3.07 W/kg

SAR(1 g) = 0.274 W/kg; SAR(10 g) = 0.058 W/kg

Maximum value of SAR (measured) = 0.689 W/kg



0 dB = 0.689 W/kg

44_WLAN5GHz_802.11ac-VHT80 MCS0_Back_5mm_Ch155

Communication System: UID 0, WIFI (0); Frequency: 5775 MHz; Duty Cycle: 1:1

Medium: HSL_5750_210618 Medium parameters used: $f = 5775$ MHz; $\sigma = 5.339$ S/m; $\epsilon_r = 35.52$; $\rho = 1000$ kg/m³

Ambient Temperature : 23.7 °C; Liquid Temperature : 22.5 °C

DASY5 Configuration:

- Probe: EX3DV4 - SN7641; ConvF(5.3, 5.3, 5.3); Calibrated: 2021/3/15
- Sensor-Surface: 1.4mm (Mechanical Surface Detection)
- Electronics: DAE4 Sn1664; Calibrated: 2021/3/1
- Phantom: Twin-SAM V8.0 (Right); Type: QD 000 P41 AA; Serial: 2033
- Measurement SW: DASY52, Version 52.10 (4); SEMCAD X Version 14.6.14 (7483)

Ch155/Area Scan (91x131x1): Interpolated grid: dx=1.000 mm, dy=1.000 mm

Maximum value of SAR (interpolated) = 2.18 W/kg

Ch155/Zoom Scan (9x10x7)/Cube 0: Measurement grid: dx=4mm, dy=4mm, dz=1.4mm

Reference Value = 1.224 V/m; Power Drift = -0.15 dB

Peak SAR (extrapolated) = 4.58 W/kg

SAR(1 g) = 0.274 W/kg; SAR(10 g) = 0.057 W/kg

Maximum value of SAR (measured) = 2.54 W/kg

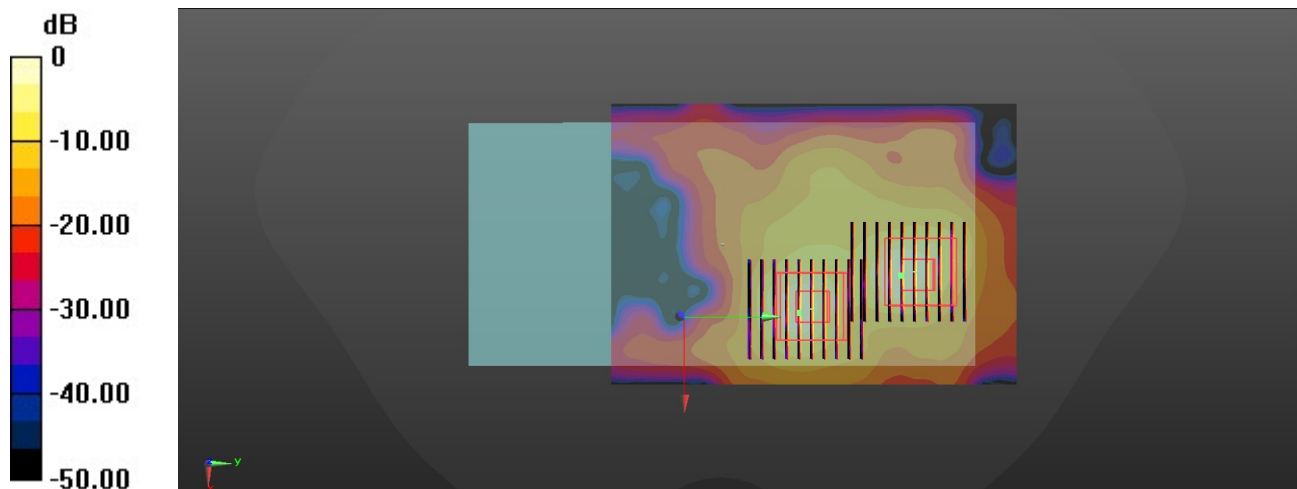
Ch155/Zoom Scan (9x10x7)/Cube 1: Measurement grid: dx=4mm, dy=4mm, dz=1.4mm

Reference Value = 1.224 V/m; Power Drift = -0.15 dB

Peak SAR (extrapolated) = 3.55 W/kg

SAR(1 g) = 0.24 W/kg; SAR(10 g) = 0.056 W/kg

Maximum value of SAR (measured) = 1.99 W/kg



0 dB = 1.99 W/kg

45_Bluetooth_DH5 1Mbps_Top Side_5mm_Ch39

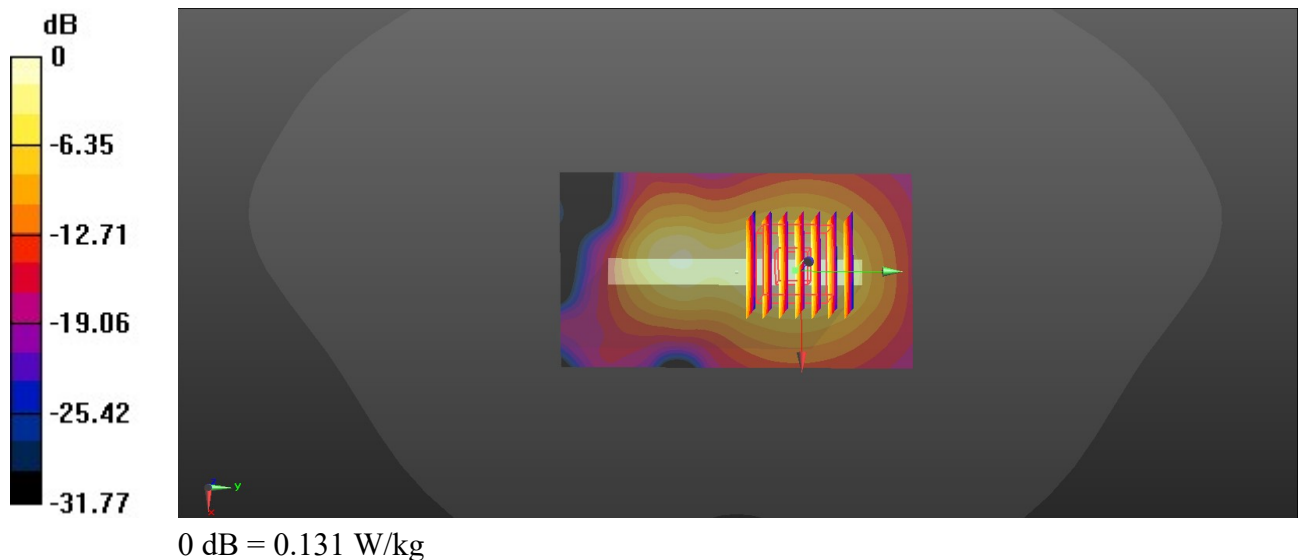
Communication System: UID 0, Bluetooth (0); Frequency: 2441 MHz; Duty Cycle: 1:1.298
Medium: HSL_2450_210608 Medium parameters used: $f = 2441$ MHz; $\sigma = 1.824$ S/m; $\epsilon_r = 39.684$; $\rho = 1000$ kg/m³
Ambient Temperature : 23.5 °C; Liquid Temperature : 22.7 °C

DASY5 Configuration:

- Probe: EX3DV4 - SN7641; ConvF(8.29, 8.29, 8.29); Calibrated: 2021/3/15
- Sensor-Surface: 1.4mm (Mechanical Surface Detection)
- Electronics: DAE4 Sn1664; Calibrated: 2021/3/1
- Phantom: Twin-SAM V8.0 (Right); Type: QD 000 P41 AA; Serial: 2033
- Measurement SW: DASY52, Version 52.10 (4); SEMCAD X Version 14.6.14 (7483)

Ch39/Area Scan (51x91x1): Interpolated grid: dx=1.200 mm, dy=1.200 mm
Maximum value of SAR (interpolated) = 0.136 W/kg

Ch39/Zoom Scan (7x7x7)/Cube 0: Measurement grid: dx=5mm, dy=5mm, dz=5mm
Reference Value = 6.207 V/m; Power Drift = 0.03 dB
Peak SAR (extrapolated) = 0.171 W/kg
SAR(1 g) = 0.075 W/kg; SAR(10 g) = 0.034 W/kg
Maximum value of SAR (measured) = 0.131 W/kg



46_GSM850_GPRS(3 Tx slots)_Back_5mm_Ch189

Communication System: UID 0, GPRS/EDGE11 (0); Frequency: 836.4 MHz; Duty Cycle: 1:2.77
Medium: HSL_835_210602 Medium parameters used: $f = 836.5$ MHz; $\sigma = 0.917$ S/m; $\epsilon_r = 41.014$; $\rho = 1000$ kg/m³

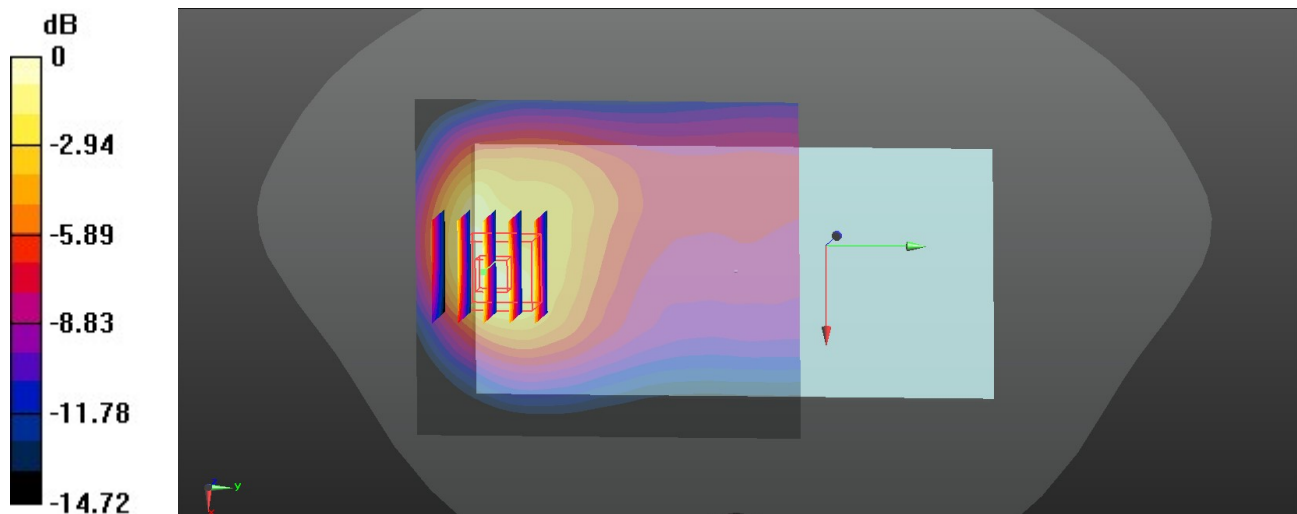
Ambient Temperature : 23.6 °C; Liquid Temperature : 22.6 °C

DASY5 Configuration:

- Probe: EX3DV4 - SN7641; ConvF(10.9, 10.9, 10.9); Calibrated: 2021/3/15
- Sensor-Surface: 1.4mm (Mechanical Surface Detection)
- Electronics: DAE4 Sn1664; Calibrated: 2021/3/1
- Phantom: Twin-SAM V8.0 (Right); Type: QD 000 P41 AA; Serial: 2033
- Measurement SW: DASY52, Version 52.10 (4); SEMCAD X Version 14.6.14 (7483)

Ch189/Area Scan (71x81x1): Interpolated grid: $dx=1.500$ mm, $dy=1.500$ mm
Maximum value of SAR (interpolated) = 1.40 W/kg

Ch189/Zoom Scan (5x5x7)/Cube 0: Measurement grid: $dx=8$ mm, $dy=8$ mm, $dz=5$ mm
Reference Value = 16.97 V/m; Power Drift = 0.05 dB
Peak SAR (extrapolated) = 1.92 W/kg
SAR(1 g) = 0.989 W/kg; SAR(10 g) = 0.549 W/kg
Maximum value of SAR (measured) = 1.56 W/kg



0 dB = 1.56 W/kg

47_GSM1900_GPRS(2 Tx slots)_Back_5mm_Ch661

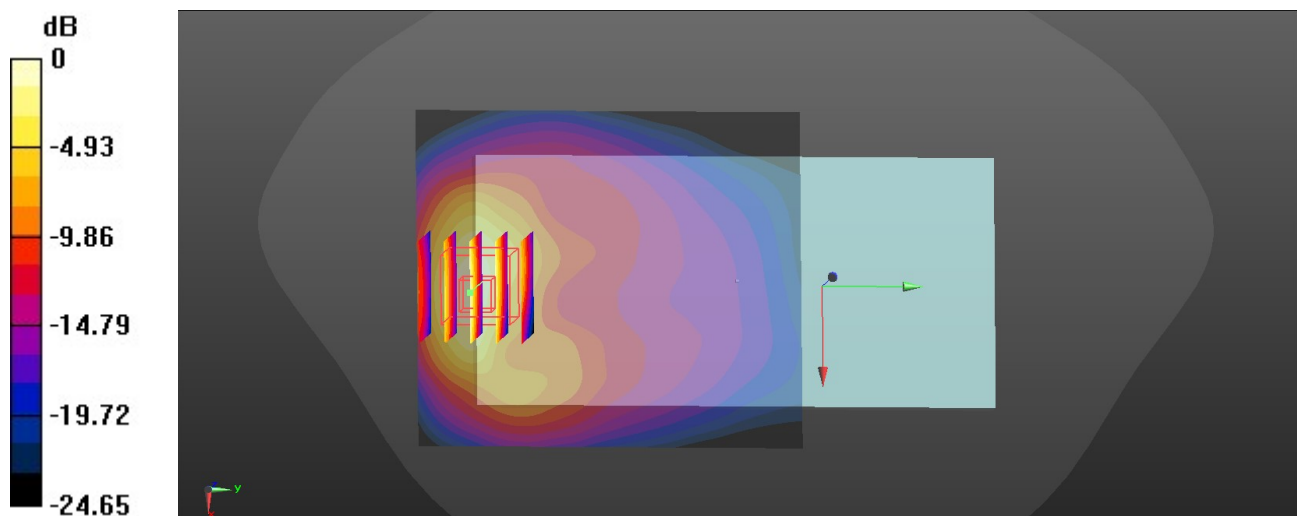
Communication System: UID 0, GPRS/EDGE10 (0); Frequency: 1880 MHz; Duty Cycle: 1:4.15
Medium: HSL_1900_210606 Medium parameters used: $f = 1880$ MHz; $\sigma = 1.412$ S/m; $\epsilon_r = 38.533$; $\rho = 1000$ kg/m³
Ambient Temperature : 23.4 °C; Liquid Temperature : 22.4 °C

DASY5 Configuration:

- Probe: EX3DV4 - SN7641; ConvF(9.05, 9.05, 9.05); Calibrated: 2021/3/15
- Sensor-Surface: 1.4mm (Mechanical Surface Detection)
- Electronics: DAE4 Sn1664; Calibrated: 2021/3/1
- Phantom: Twin-SAM V8.0 (Right); Type: QD 000 P41 AA; Serial: 2033
- Measurement SW: DASY52, Version 52.10 (4); SEMCAD X Version 14.6.14 (7483)

Ch661/Area Scan (71x81x1): Interpolated grid: $dx=1.500$ mm, $dy=1.500$ mm
Maximum value of SAR (interpolated) = 1.07 W/kg

Ch661/Zoom Scan (5x5x7)/Cube 0: Measurement grid: $dx=8$ mm, $dy=8$ mm, $dz=5$ mm
Reference Value = 4.419 V/m; Power Drift = -0.01 dB
Peak SAR (extrapolated) = 1.41 W/kg
SAR(1 g) = 0.676 W/kg; SAR(10 g) = 0.321 W/kg
Maximum value of SAR (measured) = 1.06 W/kg



0 dB = 1.06 W/kg

48_WCDMA V_RMC 12.2Kbps_Back_5mm_Ch4182

Communication System: UID 0, UMTS (0); Frequency: 836.4 MHz; Duty Cycle: 1:1
 Medium: HSL_835_210602 Medium parameters used: $f = 836.5 \text{ MHz}$; $\sigma = 0.917 \text{ S/m}$; $\epsilon_r = 41.014$; $\rho = 1000 \text{ kg/m}^3$
 Ambient Temperature : 23.6 °C; Liquid Temperature : 22.6 °C

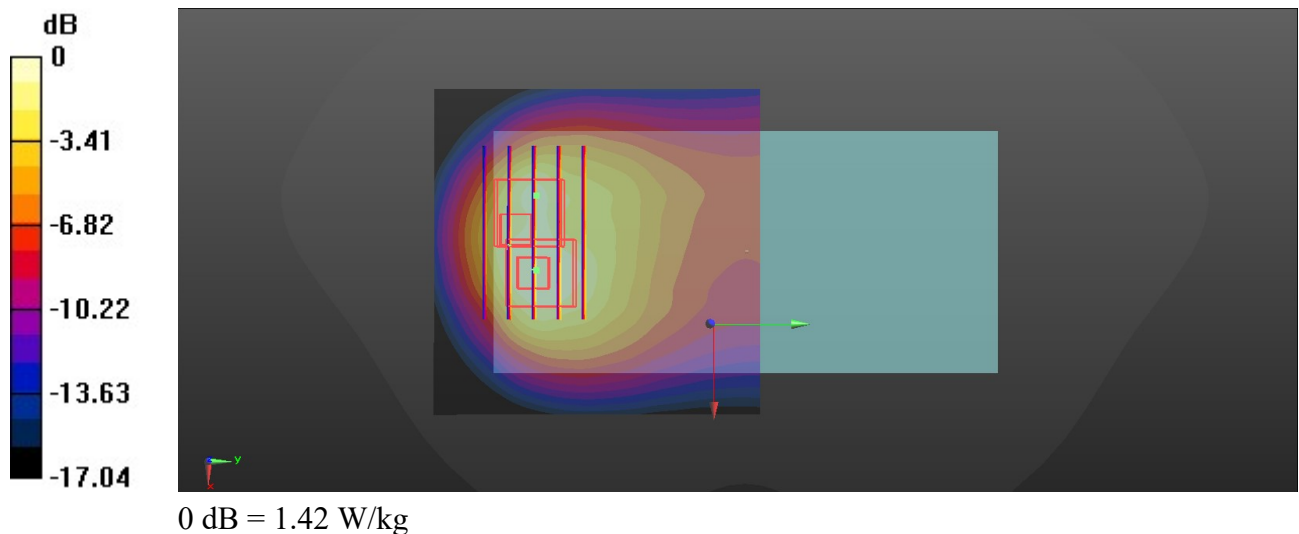
DASY5 Configuration:

- Probe: EX3DV4 - SN7641; ConvF(10.9, 10.9, 10.9); Calibrated: 2021/3/15
- Sensor-Surface: 1.4mm (Mechanical Surface Detection)
- Electronics: DAE4 Sn1664; Calibrated: 2021/3/1
- Phantom: Twin-SAM V8.0 (Right); Type: QD 000 P41 AA; Serial: 2033
- Measurement SW: DASY52, Version 52.10 (4); SEMCAD X Version 14.6.14 (7483)

Ch4182/Area Scan (71x71x1): Interpolated grid: $dx=1.500 \text{ mm}$, $dy=1.500 \text{ mm}$
 Maximum value of SAR (interpolated) = 1.82 W/kg

Ch4182/Zoom Scan (5x5x7)/Cube 0: Measurement grid: $dx=8\text{mm}$, $dy=8\text{mm}$, $dz=5\text{mm}$
 Reference Value = 16.76 V/m; Power Drift = 0.04 dB
 Peak SAR (extrapolated) = 2.07 W/kg
SAR(1 g) = 1.02 W/kg; SAR(10 g) = 0.560 W/kg
 Maximum value of SAR (measured) = 1.65 W/kg

Ch4182/Zoom Scan (5x5x7)/Cube 1: Measurement grid: $dx=8\text{mm}$, $dy=8\text{mm}$, $dz=5\text{mm}$
 Reference Value = 16.76 V/m; Power Drift = 0.04 dB
 Peak SAR (extrapolated) = 1.85 W/kg
SAR(1 g) = 0.783 W/kg; SAR(10 g) = 0.424 W/kg
 Maximum value of SAR (measured) = 1.42 W/kg



49_WCDMA IV_RMC 12.2Kbps_Front_16mm_Ch1413

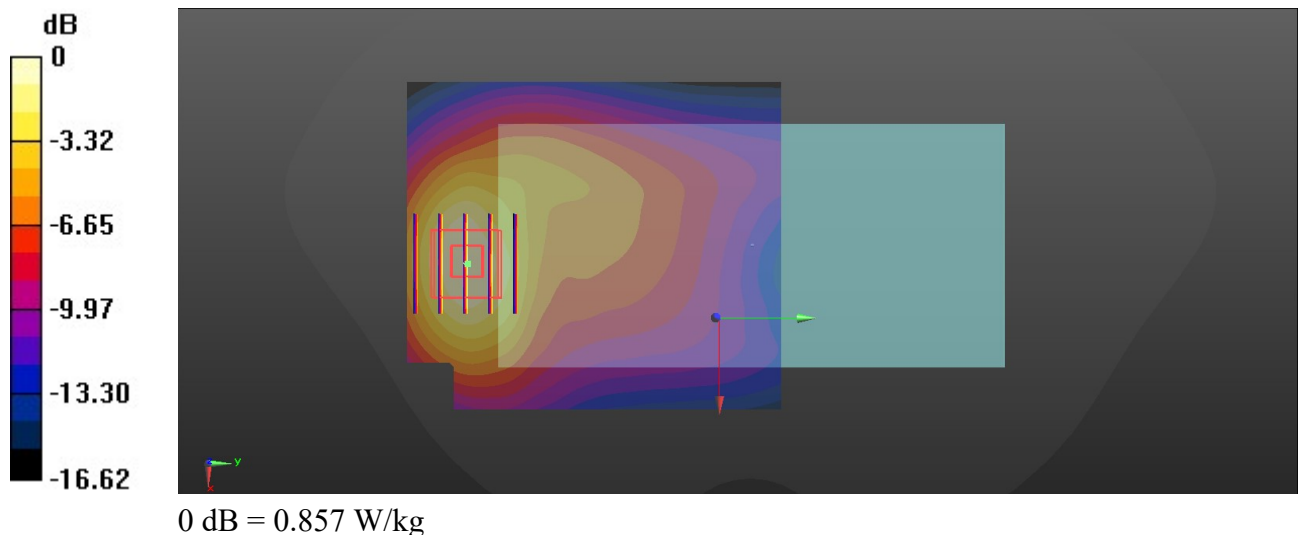
Communication System: UID 0, UMTS (0); Frequency: 1732.6 MHz; Duty Cycle: 1:1
Medium: HSL_1750_210604 Medium parameters used: $f = 1733$ MHz; $\sigma = 1.361$ S/m; $\epsilon_r = 41.422$; $\rho = 1000$ kg/m³
Ambient Temperature : 23.5 °C; Liquid Temperature : 22.6 °C

DASY5 Configuration:

- Probe: EX3DV4 - SN7641; ConvF(9.41, 9.41, 9.41); Calibrated: 2021/3/15
- Sensor-Surface: 1.4mm (Mechanical Surface Detection)
- Electronics: DAE4 Sn1664; Calibrated: 2021/3/1
- Phantom: Twin-SAM V8.0 (Right); Type: QD 000 P41 AA; Serial: 2033
- Measurement SW: DASY52, Version 52.10 (4); SEMCAD X Version 14.6.14 (7483)

Ch1413/Area Scan (71x81x1): Interpolated grid: dx=1.500 mm, dy=1.500 mm
Maximum value of SAR (interpolated) = 0.888 W/kg

Ch1413/Zoom Scan (5x5x7)/Cube 0: Measurement grid: dx=8mm, dy=8mm, dz=5mm
Reference Value = 7.156 V/m; Power Drift = -0.05 dB
Peak SAR (extrapolated) = 1.01 W/kg
SAR(1 g) = 0.589 W/kg; SAR(10 g) = 0.337 W/kg
Maximum value of SAR (measured) = 0.857 W/kg



50_WCDMA II_RMC 12.2Kbps_Back_5mm_Ch9538

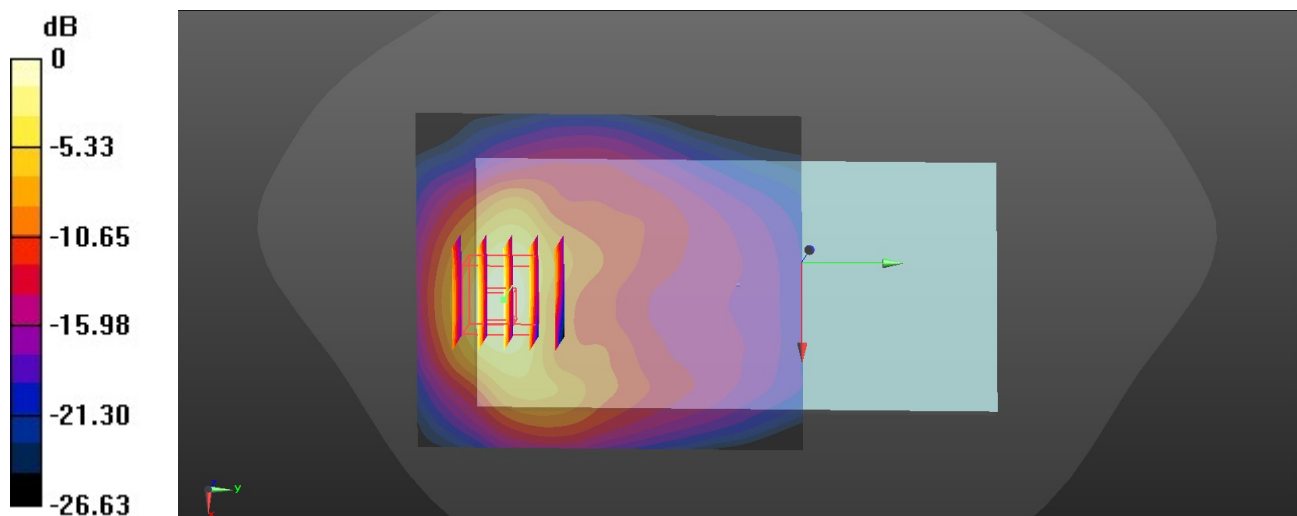
Communication System: UID 0, UMTS (0); Frequency: 1907.6 MHz; Duty Cycle: 1:1
Medium: HSL_1900_210606 Medium parameters used: $f = 1908$ MHz; $\sigma = 1.443$ S/m; $\epsilon_r = 38.445$; $\rho = 1000$ kg/m³
Ambient Temperature : 23.4 °C; Liquid Temperature : 22.4 °C

DASY5 Configuration:

- Probe: EX3DV4 - SN7641; ConvF(9.05, 9.05, 9.05); Calibrated: 2021/3/15
- Sensor-Surface: 1.4mm (Mechanical Surface Detection)
- Electronics: DAE4 Sn1664; Calibrated: 2021/3/1
- Phantom: Twin-SAM V8.0 (Right); Type: QD 000 P41 AA; Serial: 2033
- Measurement SW: DASY52, Version 52.10 (4); SEMCAD X Version 14.6.14 (7483)

Ch9538/Area Scan (71x81x1): Interpolated grid: dx=1.500 mm, dy=1.500 mm
Maximum value of SAR (interpolated) = 1.17 W/kg

Ch9538/Zoom Scan (5x5x7)/Cube 0: Measurement grid: dx=8mm, dy=8mm, dz=5mm
Reference Value = 4.863 V/m; Power Drift = 0.17 dB
Peak SAR (extrapolated) = 1.62 W/kg
SAR(1 g) = 0.754 W/kg; SAR(10 g) = 0.354 W/kg
Maximum value of SAR (measured) = 1.25 W/kg



0 dB = 1.25 W/kg

51_LTE Band 12_10M_QPSK_1RB_25Offset_Back_5mm_Ch23095

Communication System: UID 0, LTE (0); Frequency: 707.5 MHz; Duty Cycle: 1:1

Medium: HSL_750_210530 Medium parameters used: $f = 707.5$ MHz; $\sigma = 0.905$ S/m; $\epsilon_r = 41.633$; $\rho = 1000$ kg/m³

Ambient Temperature : 23.3 °C; Liquid Temperature : 22.4 °C

DASY5 Configuration:

- Probe: EX3DV4 - SN7641; ConvF(11.05, 11.05, 11.05); Calibrated: 2021/3/15
- Sensor-Surface: 1.4mm (Mechanical Surface Detection)
- Electronics: DAE4 Sn1664; Calibrated: 2021/3/1
- Phantom: Twin-SAM V8.0 (Right); Type: QD 000 P41 AA; Serial: 2033
- Measurement SW: DASY52, Version 52.10 (4); SEMCAD X Version 14.6.14 (7483)

Ch23095/Area Scan (71x131x1): Interpolated grid: dx=1.500 mm, dy=1.500 mm

Maximum value of SAR (interpolated) = 0.991 W/kg

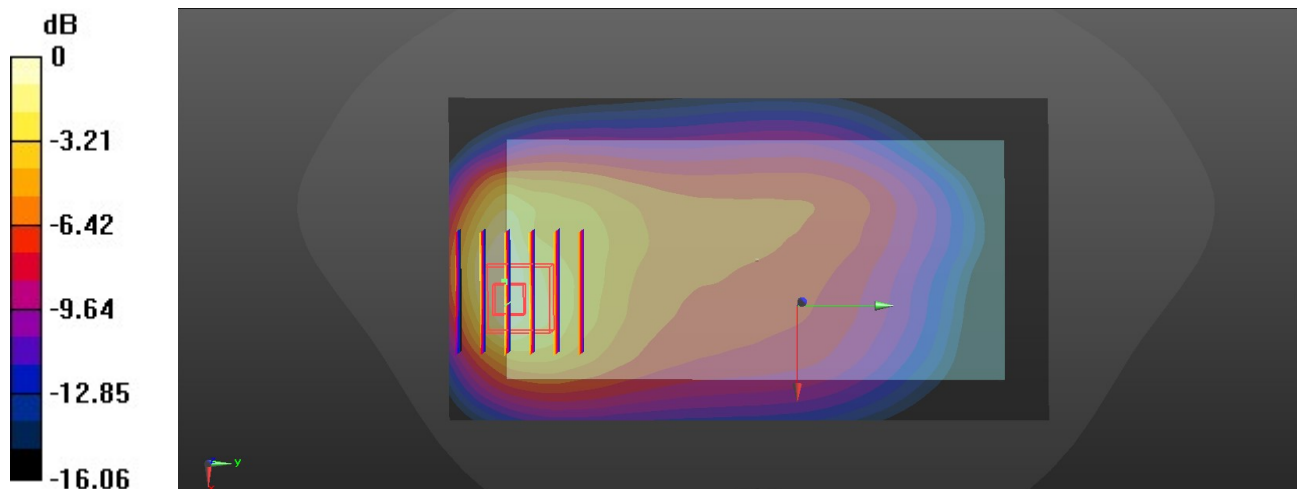
Ch23095/Zoom Scan (6x6x7)/Cube 0: Measurement grid: dx=8mm, dy=8mm, dz=5mm

Reference Value = 16.54 V/m; Power Drift = -0.03 dB

Peak SAR (extrapolated) = 1.19 W/kg

SAR(1 g) = 0.584 W/kg; SAR(10 g) = 0.327 W/kg

Maximum value of SAR (measured) = 0.944 W/kg



0 dB = 0.944 W/kg

52_LTE Band 13_10M_QPSK_1RB_25Offset_Back_5mm_Ch23230

Communication System: UID 0, LTE (0); Frequency: 782 MHz; Duty Cycle: 1:1

Medium: HSL_750_210530 Medium parameters used: $f = 782 \text{ MHz}$; $\sigma = 0.914 \text{ S/m}$; $\epsilon_r = 40.272$; $\rho = 1000 \text{ kg/m}^3$

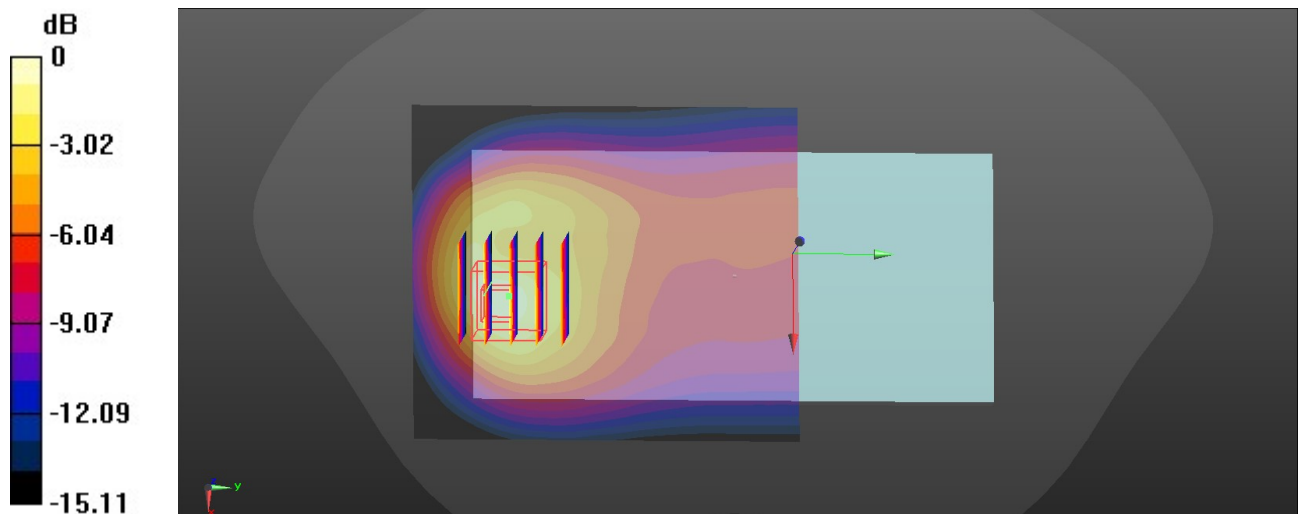
Ambient Temperature : 23.3 °C; Liquid Temperature : 22.4 °C

DASY5 Configuration:

- Probe: EX3DV4 - SN7641; ConvF(11.05, 11.05, 11.05); Calibrated: 2021/3/15
- Sensor-Surface: 1.4mm (Mechanical Surface Detection)
- Electronics: DAE4 Sn1664; Calibrated: 2021/3/1
- Phantom: Twin-SAM V8.0 (Right); Type: QD 000 P41 AA; Serial: 2033
- Measurement SW: DASY52, Version 52.10 (4); SEMCAD X Version 14.6.14 (7483)

Ch23230/Area Scan (71x81x1): Interpolated grid: $dx=1.500 \text{ mm}$, $dy=1.500 \text{ mm}$
 Maximum value of SAR (interpolated) = 1.11 W/kg

Ch23230/Zoom Scan (5x5x7)/Cube 0: Measurement grid: $dx=8\text{mm}$, $dy=8\text{mm}$, $dz=5\text{mm}$
 Reference Value = 17.11 V/m; Power Drift = 0.04 dB
 Peak SAR (extrapolated) = 1.59 W/kg
SAR(1 g) = 0.778 W/kg; SAR(10 g) = 0.430 W/kg
 Maximum value of SAR (measured) = 1.25 W/kg



0 dB = 1.25 W/kg

53_LTE Band 26_15M_QPSK_1RB_37Offset_Back_5mm_Ch26865

Communication System: UID 0, LTE (0); Frequency: 831.5 MHz; Duty Cycle: 1:1
 Medium: HSL_835_210602 Medium parameters used: $f = 831.5 \text{ MHz}$; $\sigma = 0.975 \text{ S/m}$; $\epsilon_r = 39.735$; $\rho = 1000 \text{ kg/m}^3$
 Ambient Temperature : 23.6 °C; Liquid Temperature : 22.6 °C

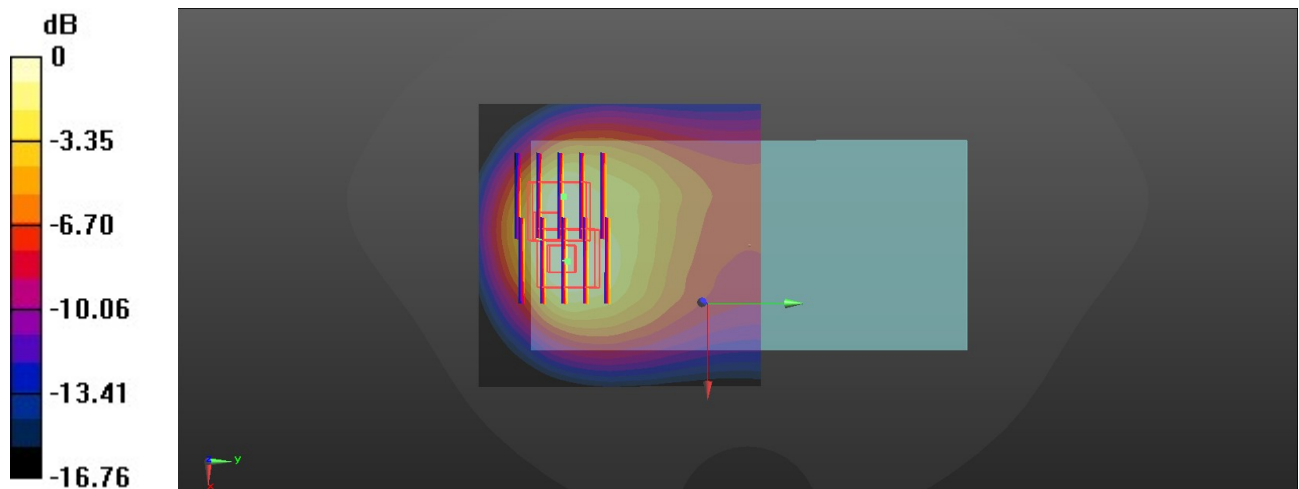
DASY5 Configuration:

- Probe: EX3DV4 - SN7641; ConvF(10.9, 10.9, 10.9); Calibrated: 2021/3/15
- Sensor-Surface: 1.4mm (Mechanical Surface Detection)
- Electronics: DAE4 Sn1664; Calibrated: 2021/3/1
- Phantom: Twin-SAM V8.0 (Right); Type: QD 000 P41 AA; Serial: 2033
- Measurement SW: DASY52, Version 52.10 (4); SEMCAD X Version 14.6.14 (7483)

Ch26865/Area Scan (71x71x1): Interpolated grid: $dx=1.500 \text{ mm}$, $dy=1.500 \text{ mm}$
 Maximum value of SAR (interpolated) = 1.72 W/kg

Ch26865/Zoom Scan (5x5x7)/Cube 0: Measurement grid: $dx=8\text{mm}$, $dy=8\text{mm}$, $dz=5\text{mm}$
 Reference Value = 16.08 V/m; Power Drift = 0.05 dB
 Peak SAR (extrapolated) = 1.91 W/kg
SAR(1 g) = 0.959 W/kg; SAR(10 g) = 0.531 W/kg
 Maximum value of SAR (measured) = 1.51 W/kg

Ch26865/Zoom Scan (5x5x7)/Cube 1: Measurement grid: $dx=8\text{mm}$, $dy=8\text{mm}$, $dz=5\text{mm}$
 Reference Value = 16.08 V/m; Power Drift = 0.05 dB
 Peak SAR (extrapolated) = 1.78 W/kg
SAR(1 g) = 0.756 W/kg; SAR(10 g) = 0.407 W/kg
 Maximum value of SAR (measured) = 1.33 W/kg



0 dB = 1.33 W/kg

54_LTE Band 66_20M_QPSK_50RB_24Offset_Back_5mm_Ch132322

Communication System: UID 0, LTE (0); Frequency: 1745 MHz; Duty Cycle: 1:1

Medium: HSL_1750_210604 Medium parameters used: $f = 1745$ MHz; $\sigma = 1.373$ S/m; $\epsilon_r = 41.368$; $\rho = 1000$ kg/m³

Ambient Temperature : 23.5 °C; Liquid Temperature : 22.6 °C

DASY5 Configuration:

- Probe: EX3DV4 - SN7641; ConvF(9.41, 9.41, 9.41); Calibrated: 2021/3/15
- Sensor-Surface: 1.4mm (Mechanical Surface Detection)
- Electronics: DAE4 Sn1664; Calibrated: 2021/3/1
- Phantom: Twin-SAM V8.0 (Right); Type: QD 000 P41 AA; Serial: 2033
- Measurement SW: DASY52, Version 52.10 (4); SEMCAD X Version 14.6.14 (7483)

Ch132322/Area Scan (71x81x1): Interpolated grid: dx=1.500 mm, dy=1.500 mm

Maximum value of SAR (interpolated) = 1.18 W/kg

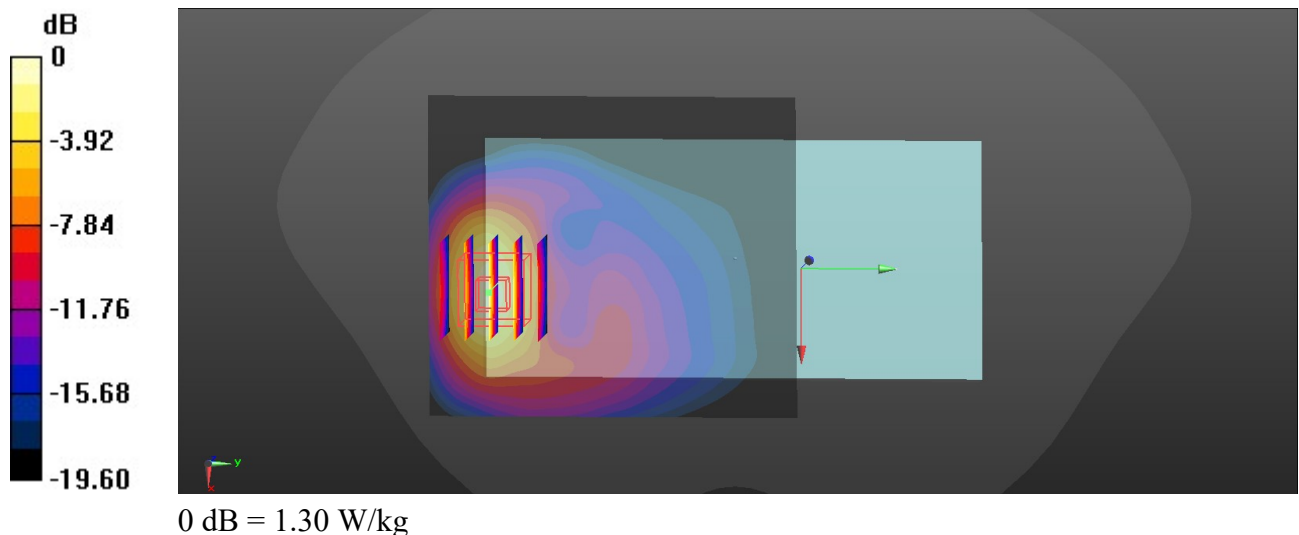
Ch132322/Zoom Scan (5x5x7)/Cube 0: Measurement grid: dx=8mm, dy=8mm, dz=5mm

Reference Value = 4.275 V/m; Power Drift = 0.08 dB

Peak SAR (extrapolated) = 1.62 W/kg

SAR(1 g) = 0.808 W/kg; SAR(10 g) = 0.399 W/kg

Maximum value of SAR (measured) = 1.30 W/kg



55_LTE Band 2_20M_QPSK_100RB_0Offset_Back_5mm_Ch19100

Communication System: UID 0, LTE (0); Frequency: 1900 MHz; Duty Cycle: 1:1

Medium: HSL_1900_210606 Medium parameters used: $f = 1900$ MHz; $\sigma = 1.443$ S/m; $\epsilon_r = 40.03$; $\rho = 1000$ kg/m³

Ambient Temperature : 23.4 °C; Liquid Temperature : 22.4 °C

DASY5 Configuration:

- Probe: EX3DV4 - SN7641; ConvF(9.05, 9.05, 9.05); Calibrated: 2021/3/15
- Sensor-Surface: 1.4mm (Mechanical Surface Detection)
- Electronics: DAE4 Sn1664; Calibrated: 2021/3/1
- Phantom: Twin-SAM V8.0 (Right); Type: QD 000 P41 AA; Serial: 2033
- Measurement SW: DASY52, Version 52.10 (4); SEMCAD X Version 14.6.14 (7483)

Ch19100/Area Scan (71x71x1): Interpolated grid: dx=1.500 mm, dy=1.500 mm

Maximum value of SAR (interpolated) = 0.949 W/kg

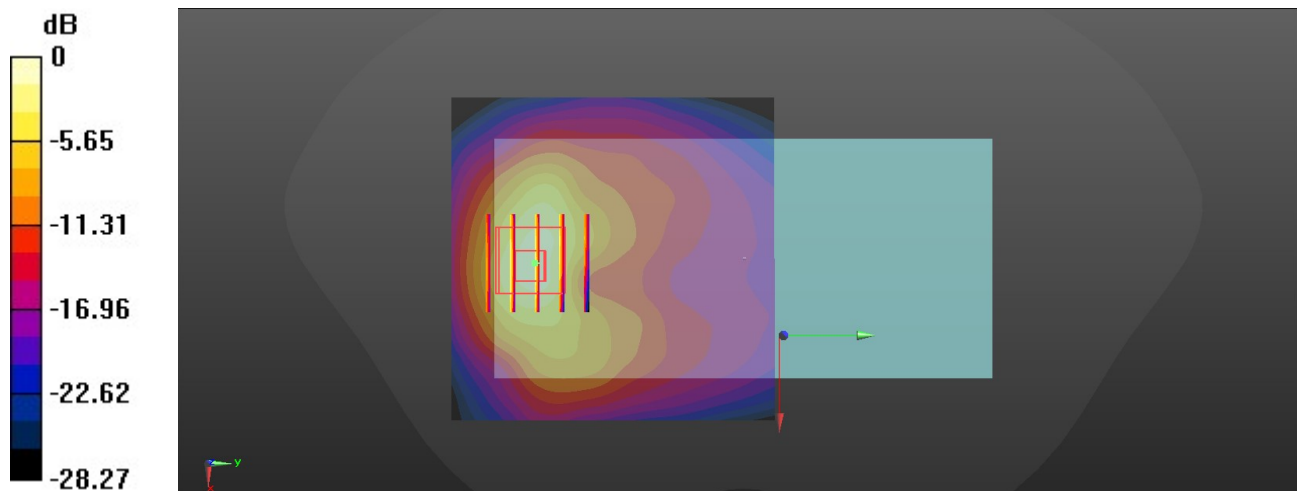
Ch19100/Zoom Scan (5x5x7)/Cube 0: Measurement grid: dx=8mm, dy=8mm, dz=5mm

Reference Value = 4.910 V/m; Power Drift = -0.08 dB

Peak SAR (extrapolated) = 1.49 W/kg

SAR(1 g) = 0.686 W/kg; SAR(10 g) = 0.318 W/kg

Maximum value of SAR (measured) = 1.17 W/kg



0 dB = 1.17 W/kg

56_LTE Band 7_20M_QPSK_50RB_24Offset_Back_5mm_Ch20850

Communication System: UID 0, LTE (0); Frequency: 2510 MHz; Duty Cycle: 1:1

Medium: HSL_2600_210610 Medium parameters used: $f = 2510$ MHz; $\sigma = 1.953$ S/m; $\epsilon_r = 37.621$; $\rho = 1000$ kg/m³

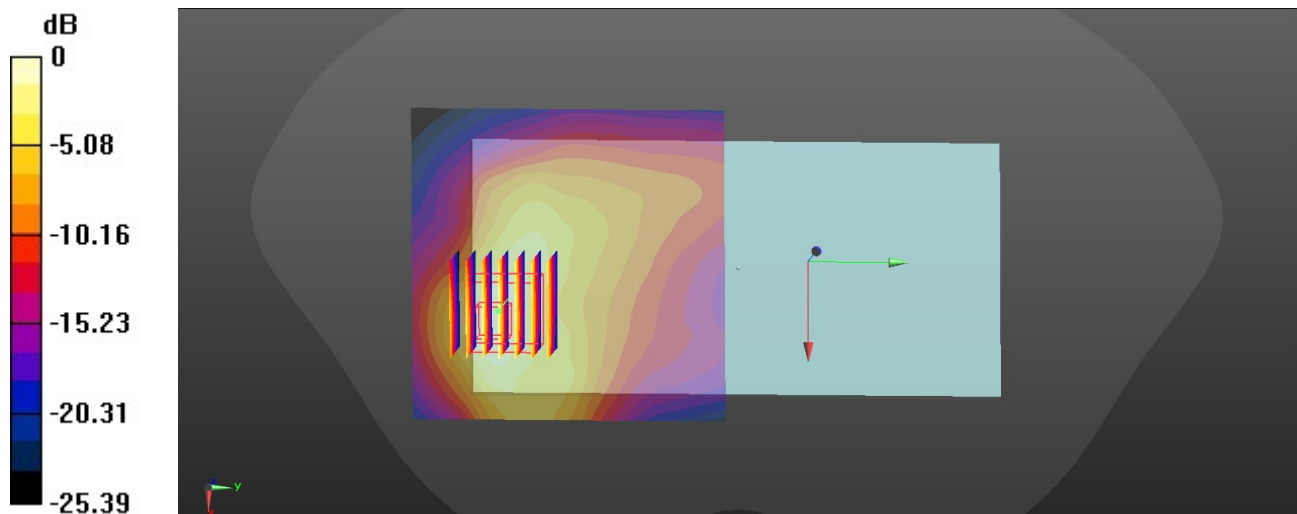
Ambient Temperature : 23.5 °C; Liquid Temperature : 22.6 °C

DASY5 Configuration:

- Probe: EX3DV4 - SN7641; ConvF(7.94, 7.94, 7.94); Calibrated: 2021/3/15
- Sensor-Surface: 1.4mm (Mechanical Surface Detection)
- Electronics: DAE4 Sn1664; Calibrated: 2021/3/1
- Phantom: Twin-SAM V8.0 (Right); Type: QD 000 P41 AA; Serial: 2033
- Measurement SW: DASY52, Version 52.10 (4); SEMCAD X Version 14.6.14 (7483)

Ch20850/Area Scan (81x81x1): Interpolated grid: dx=1.200 mm, dy=1.200 mm
Maximum value of SAR (interpolated) = 1.48 W/kg

Ch20850/Zoom Scan (7x7x7)/Cube 0: Measurement grid: dx=5mm, dy=5mm, dz=5mm
Reference Value = 4.728 V/m; Power Drift = -0.16 dB
Peak SAR (extrapolated) = 1.91 W/kg
SAR(1 g) = 0.820 W/kg; SAR(10 g) = 0.385 W/kg
Maximum value of SAR (measured) = 1.43 W/kg



0 dB = 1.43 W/kg