

15_N66_20M_BPSK_1RB_53Offset_DFT-15_Left Tilted_Ch354000

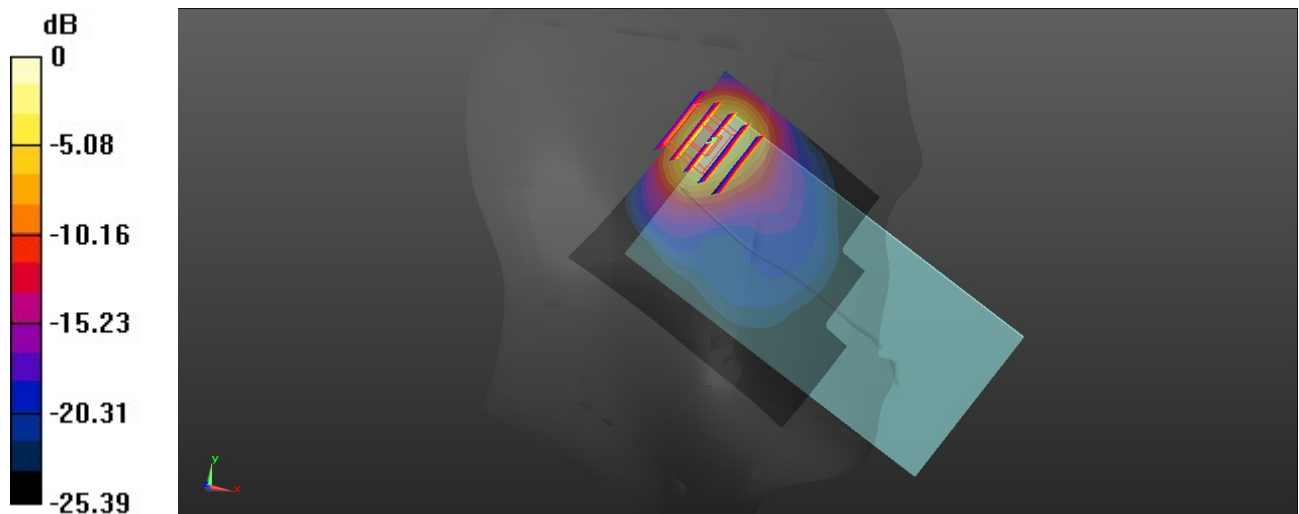
Communication System: UID 0, 5G NR (0); Frequency: 1770 MHz; Duty Cycle: 1:1
Medium: HSL_1750_210604 Medium parameters used: $f = 1770$ MHz; $\sigma = 1.403$ S/m; $\epsilon_r = 41.243$; $\rho = 1000$ kg/m³
Ambient Temperature : 23.5 °C; Liquid Temperature : 22.6 °C

DASY5 Configuration:

- Probe: EX3DV4 - SN7641; ConvF(9.41, 9.41, 9.41); Calibrated: 2021/3/15
- Sensor-Surface: 1.4mm (Mechanical Surface Detection)
- Electronics: DAE4 Sn1664; Calibrated: 2021/3/1
- Phantom: Twin-SAM V8.0 (Right); Type: QD 000 P41 AA; Serial: 2033
- Measurement SW: DASY52, Version 52.10 (4); SEMCAD X Version 14.6.14 (7483)

Ch354000/Area Scan (71x81x1): Interpolated grid: dx=1.500 mm, dy=1.500 mm
Maximum value of SAR (interpolated) = 1.31 W/kg

Ch354000/Zoom Scan (5x5x7)/Cube 0: Measurement grid: dx=8mm, dy=8mm, dz=5mm
Reference Value = 10.21 V/m; Power Drift = 0.08 dB
Peak SAR (extrapolated) = 1.80 W/kg
SAR(1 g) = 0.685 W/kg; SAR(10 g) = 0.283 W/kg
Maximum value of SAR (measured) = 1.27 W/kg



0 dB = 1.27 W/kg

16_N7_20M_BPSK_1RB_53Offset_DFT-15_Left Tilted_Ch512000

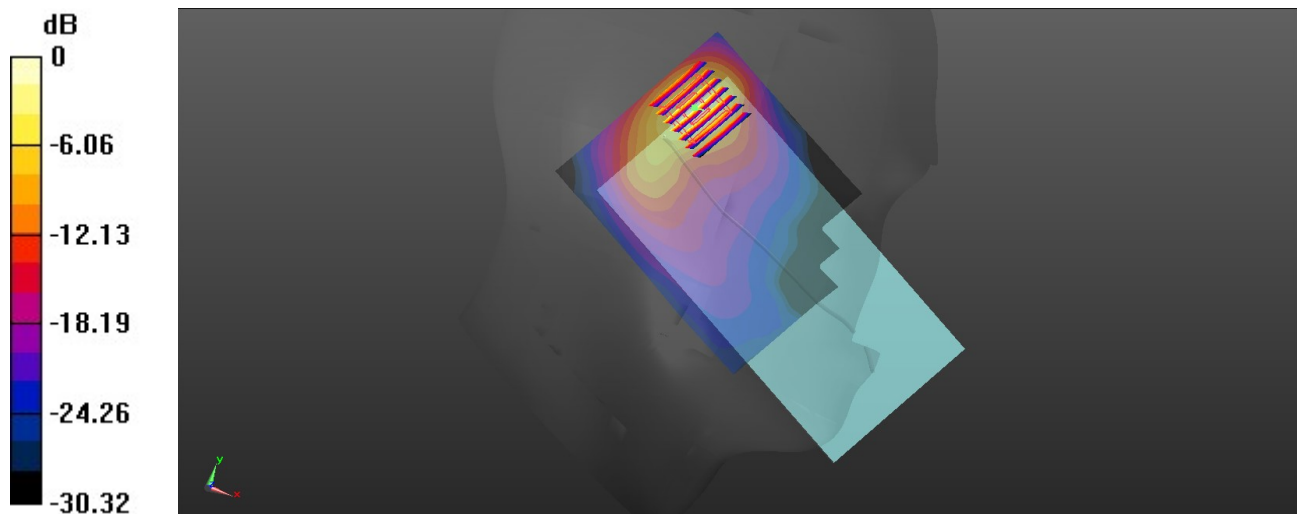
Communication System: UID 0, 5G NR (0); Frequency: 2560 MHz; Duty Cycle: 1:1
Medium: HSL_2600_210610 Medium parameters used: $f = 2560$ MHz; $\sigma = 2.01$ S/m; $\epsilon_r = 37.49$; $\rho = 1000$ kg/m³
Ambient Temperature : 23.5 °C; Liquid Temperature : 22.6 °C

DASY5 Configuration:

- Probe: EX3DV4 - SN7641; ConvF(7.94, 7.94, 7.94); Calibrated: 2021/3/15
- Sensor-Surface: 1.4mm (Mechanical Surface Detection)
- Electronics: DAE4 Sn1664; Calibrated: 2021/3/1
- Phantom: Twin-SAM V8.0 (Right); Type: QD 000 P41 AA; Serial: 2033
- Measurement SW: DASY52, Version 52.10 (4); SEMCAD X Version 14.6.14 (7483)

Ch512000/Area Scan (81x101x1): Interpolated grid: dx=1.200 mm, dy=1.200 mm
Maximum value of SAR (interpolated) = 1.13 W/kg

Ch512000/Zoom Scan (7x7x7)/Cube 0: Measurement grid: dx=5mm, dy=5mm, dz=5mm
Reference Value = 14.24 V/m; Power Drift = 0.05 dB
Peak SAR (extrapolated) = 1.74 W/kg
SAR(1 g) = 0.683 W/kg; SAR(10 g) = 0.265 W/kg
Maximum value of SAR (measured) = 1.32 W/kg



0 dB = 1.32 W/kg

17_N77_100M_BPSK_1RB_1Offset_DFT-30_Right Tilted_Ch656000

Communication System: UID 0, 5G NR (0); Frequency: 3840 MHz; Duty Cycle: 1:1

Medium: HSL_3900_210525 Medium parameters used: $f = 3840$ MHz; $\sigma = 3.156$ S/m; $\epsilon_r = 37.99$; $\rho = 1000$ kg/m³

Ambient Temperature : 23.5 °C; Liquid Temperature : 22.6 °C

DASY5 Configuration:

- Probe: EX3DV4 - SN3819; ConvF(6.48, 6.48, 6.48); Calibrated: 2021/4/30
- Sensor-Surface: 1.4mm (Mechanical Surface Detection)
- Electronics: DAE4 Sn1386; Calibrated: 2021/1/13
- Phantom: SAM (30deg probe tilt) with CRP v4.0; Type: QD000P40CC; Serial: TP: 1500
- Measurement SW: DASY52, Version 52.10 (3); SEMCAD X Version 14.6.14 (7483)

Ch656000/Area Scan (81x91x1): Interpolated grid: dx=1.200 mm, dy=1.200 mm

Maximum value of SAR (interpolated) = 0.179 W/kg

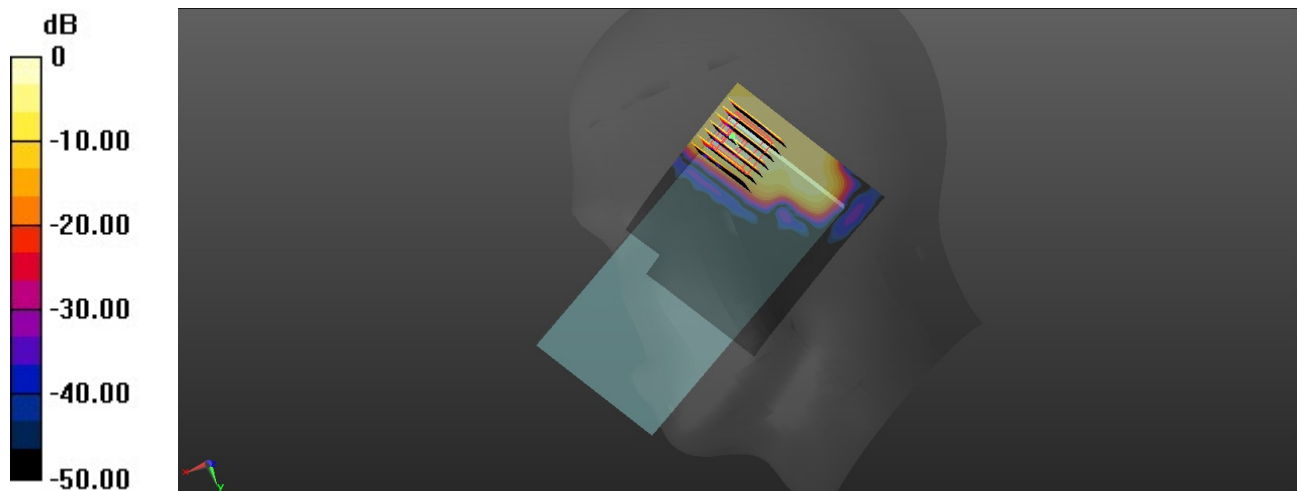
Ch656000/Zoom Scan (8x7x8)/Cube 0: Measurement grid: dx=5mm, dy=5mm, dz=1.4mm

Reference Value = 4.111 V/m; Power Drift = 0.03 dB

Peak SAR (extrapolated) = 0.425 W/kg

SAR(1 g) = 0.052 W/kg; SAR(10 g) = 0.016 W/kg

Maximum value of SAR (measured) = 0.204 W/kg



0 dB = 0.204 W/kg

18_N78_100M_BPSK_135RB_0Offset_DFT-30_Right Tilted_Ch633334

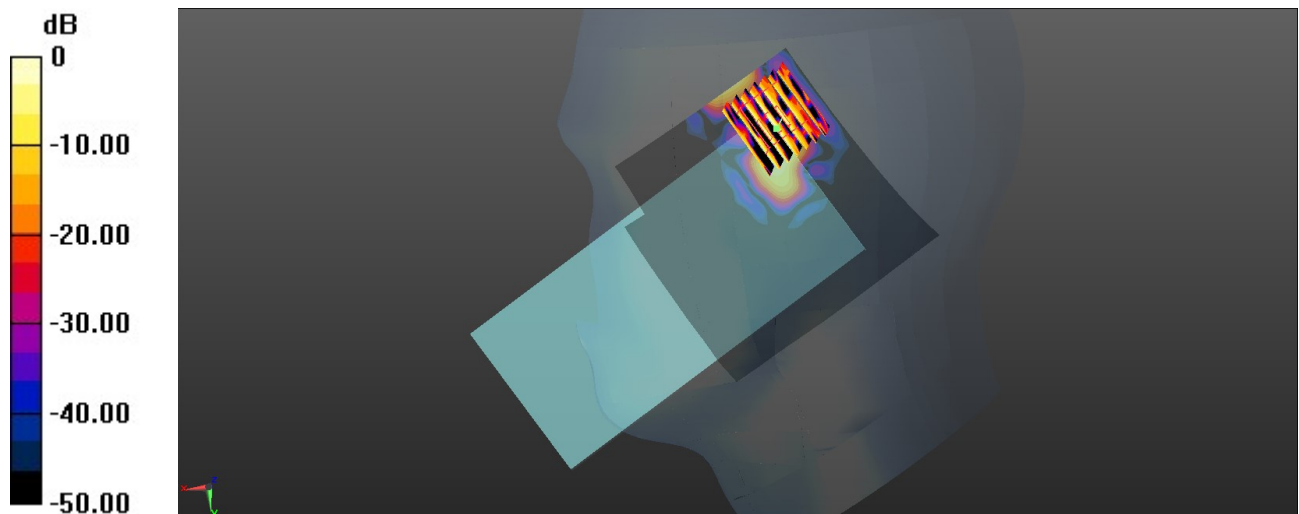
Communication System: UID 0, 5GNR (0); Frequency: 3500.01 MHz; Duty Cycle: 1:1
Medium: HSL_3500_210619 Medium parameters used: $f = 3500.01$ MHz; $\sigma = 2.909$ S/m; $\epsilon_r = 38.635$; $\rho = 1000$ kg/m³
Ambient Temperature : 23.8 °C; Liquid Temperature : 22.8 °C

DASY5 Configuration:

- Probe: EX3DV4 - SN7641; ConvF(7.4, 7.4, 7.4); Calibrated: 2021/3/15
- Sensor-Surface: 1.4mm (Mechanical Surface Detection)
- Electronics: DAE4 Sn1664; Calibrated: 2021/3/1
- Phantom: Twin-SAM V8.0 (Right); Type: QD 000 P41 AA; Serial: 2033
- Measurement SW: DASY52, Version 52.10 (4); SEMCAD X Version 14.6.14 (7483)

Ch633334/Area Scan (91x91x1): Interpolated grid: dx=1.200 mm, dy=1.200 mm
Maximum value of SAR (interpolated) = 0.0765 W/kg

Ch633334/Zoom Scan (8x7x7)/Cube 0: Measurement grid: dx=5mm, dy=5mm, dz=1.4mm
Reference Value = 2.135 V/m; Power Drift = -0.12 dB
Peak SAR (extrapolated) = 0.0830 W/kg
SAR(1 g) = 0.026 W/kg; SAR(10 g) = 0.00777 W/kg
Maximum value of SAR (measured) = 0.0580 W/kg



0 dB = 0.0580 W/kg

19_WLAN2.4GHz_802.11b 1Mbps_Right Cheek_Ch6

Communication System: UID 0, WIFI (0); Frequency: 2437 MHz; Duty Cycle: 1:1.017

Medium: HSL_2450_210608 Medium parameters used: $f = 2437$ MHz; $\sigma = 1.82$ S/m; $\epsilon_r = 39.699$; $\rho = 1000$ kg/m³

Ambient Temperature : 23.5 °C; Liquid Temperature : 22.7 °C

DASY5 Configuration:

- Probe: EX3DV4 - SN7641; ConvF(8.29, 8.29, 8.29); Calibrated: 2021/3/15
- Sensor-Surface: 1.4mm (Mechanical Surface Detection)
- Electronics: DAE4 Sn1664; Calibrated: 2021/3/1
- Phantom: Twin-SAM V8.0 (Right); Type: QD 000 P41 AA; Serial: 2033
- Measurement SW: DASY52, Version 52.10 (4); SEMCAD X Version 14.6.14 (7483)

Ch6/Area Scan (81x111x1): Interpolated grid: dx=1.200 mm, dy=1.200 mm

Maximum value of SAR (interpolated) = 1.12 W/kg

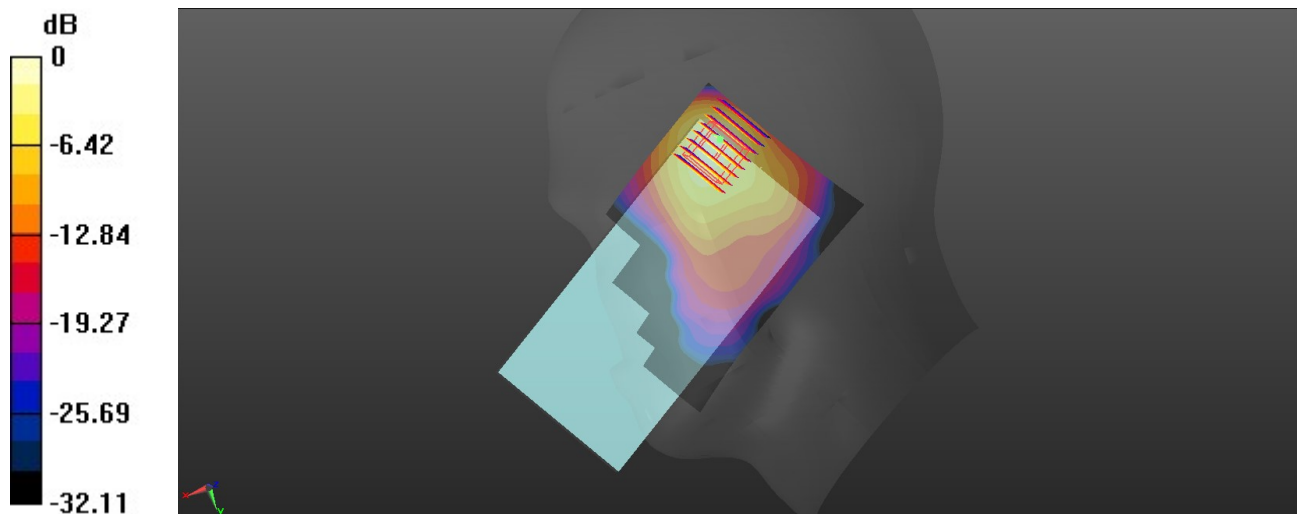
Ch6/Zoom Scan (7x8x7)/Cube 0: Measurement grid: dx=5mm, dy=5mm, dz=5mm

Reference Value = 11.76 V/m; Power Drift = -0.09 dB

Peak SAR (extrapolated) = 1.66 W/kg

SAR(1 g) = 0.773 W/kg; SAR(10 g) = 0.319 W/kg

Maximum value of SAR (measured) = 1.21 W/kg



0 dB = 1.21 W/kg

20_WLAN5GHz_802.11a 6Mbps_Left Tilted_Ch60

Communication System: UID 0, WIFI (0); Frequency: 5300 MHz; Duty Cycle: 1:1.007

Medium: HSL_5250_210616 Medium parameters used: $f = 5300$ MHz; $\sigma = 4.776$ S/m; $\epsilon_r = 36.353$; $\rho = 1000$ kg/m³

Ambient Temperature : 23.7 °C; Liquid Temperature : 22.4 °C

DASY5 Configuration:

- Probe: EX3DV4 - SN7641; ConvF(5.68, 5.68, 5.68); Calibrated: 2021/3/15
- Sensor-Surface: 1.4mm (Mechanical Surface Detection)
- Electronics: DAE4 Sn1664; Calibrated: 2021/3/1
- Phantom: Twin-SAM V8.0 (Right); Type: QD 000 P41 AA; Serial: 2033
- Measurement SW: DASY52, Version 52.10 (4); SEMCAD X Version 14.6.14 (7483)

Ch60/Area Scan (91x101x1): Interpolated grid: dx=1.000 mm, dy=1.000 mm

Maximum value of SAR (interpolated) = 0.151 W/kg

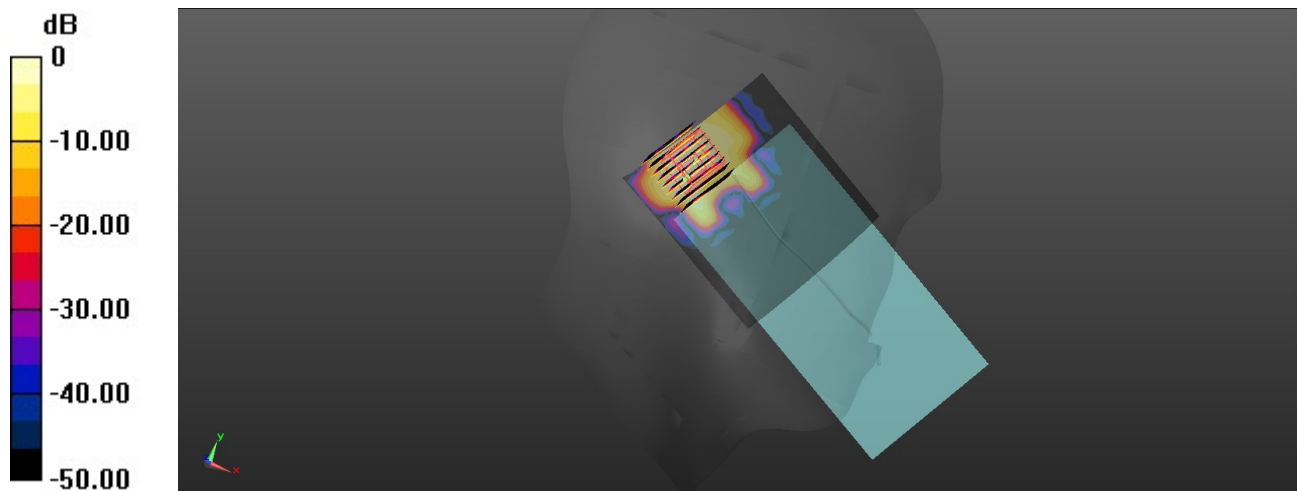
Ch60/Zoom Scan (9x9x7)/Cube 0: Measurement grid: dx=4mm, dy=4mm, dz=1.4mm

Reference Value = 1.720 V/m; Power Drift = 0.06 dB

Peak SAR (extrapolated) = 0.196 W/kg

SAR(1 g) = 0.057 W/kg; SAR(10 g) = 0.020 W/kg

Maximum value of SAR (measured) = 0.130 W/kg



0 dB = 0.130 W/kg

21_WLAN5GHz_802.11a 6Mbps_Left Tilted_Ch132

Communication System: UID 0, WIFI (0); Frequency: 5660 MHz; Duty Cycle: 1:1.007

Medium: HSL_5600_210618 Medium parameters used: $f = 5660$ MHz; $\sigma = 5.208$ S/m; $\epsilon_r = 35.729$; $\rho = 1000$ kg/m³

Ambient Temperature : 23.6 °C; Liquid Temperature : 22.4 °C

DASY5 Configuration:

- Probe: EX3DV4 - SN7641; ConvF(5.03, 5.03, 5.03); Calibrated: 2021/3/15
- Sensor-Surface: 1.4mm (Mechanical Surface Detection)
- Electronics: DAE4 Sn1664; Calibrated: 2021/3/1
- Phantom: Twin-SAM V8.0 (Right); Type: QD 000 P41 AA; Serial: 2033
- Measurement SW: DASY52, Version 52.10 (4); SEMCAD X Version 14.6.14 (7483)

Ch132/Area Scan (91x111x1): Interpolated grid: dx=1.000 mm, dy=1.000 mm

Maximum value of SAR (interpolated) = 0.339 W/kg

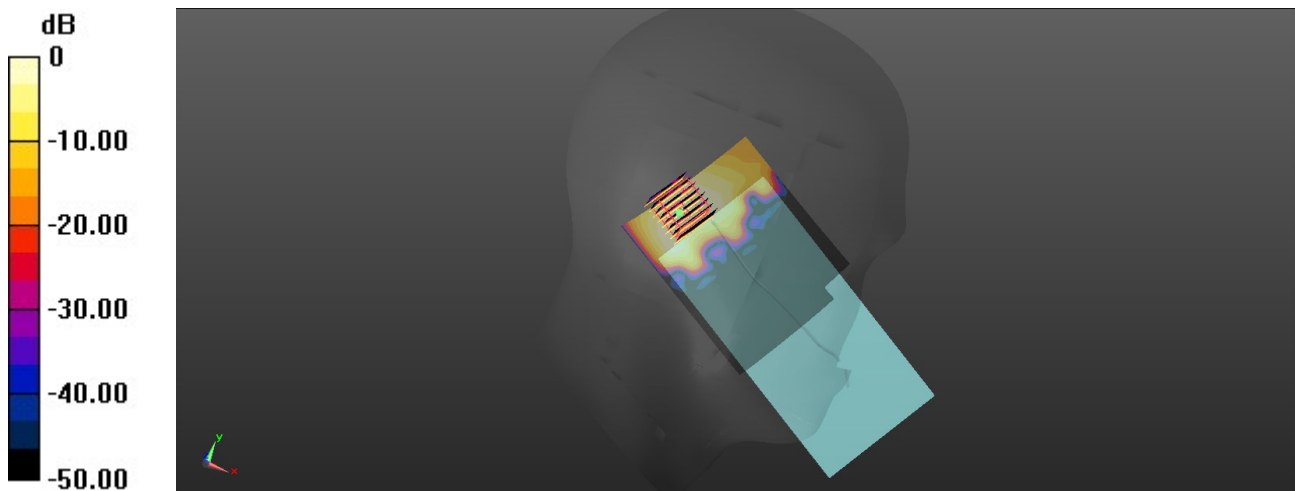
Ch132/Zoom Scan (8x8x7)/Cube 0: Measurement grid: dx=4mm, dy=4mm, dz=1.4mm

Reference Value = 5.525 V/m; Power Drift = 0.07 dB

Peak SAR (extrapolated) = 0.514 W/kg

SAR(1 g) = 0.141 W/kg; SAR(10 g) = 0.053 W/kg

Maximum value of SAR (measured) = 0.328 W/kg



0 dB = 0.328 W/kg

22_WLAN5GHz_802.11ac-VHT80 MCS0_Left Tilted_Ch155

Communication System: UID 0, WIFI (0); Frequency: 5775 MHz; Duty Cycle: 1:1

Medium: HSL_5750_210618 Medium parameters used: $f = 5775$ MHz; $\sigma = 5.339$ S/m; $\epsilon_r = 35.52$; $\rho = 1000$ kg/m³

Ambient Temperature : 23.7 °C; Liquid Temperature : 22.5 °C

DASY5 Configuration:

- Probe: EX3DV4 - SN7641; ConvF(5.3, 5.3, 5.3); Calibrated: 2021/3/15
- Sensor-Surface: 1.4mm (Mechanical Surface Detection)
- Electronics: DAE4 Sn1664; Calibrated: 2021/3/1
- Phantom: Twin-SAM V8.0 (Right); Type: QD 000 P41 AA; Serial: 2033
- Measurement SW: DASY52, Version 52.10 (4); SEMCAD X Version 14.6.14 (7483)

Ch155/Area Scan (91x131x1): Interpolated grid: dx=1.000 mm, dy=1.000 mm

Maximum value of SAR (interpolated) = 0.279 W/kg

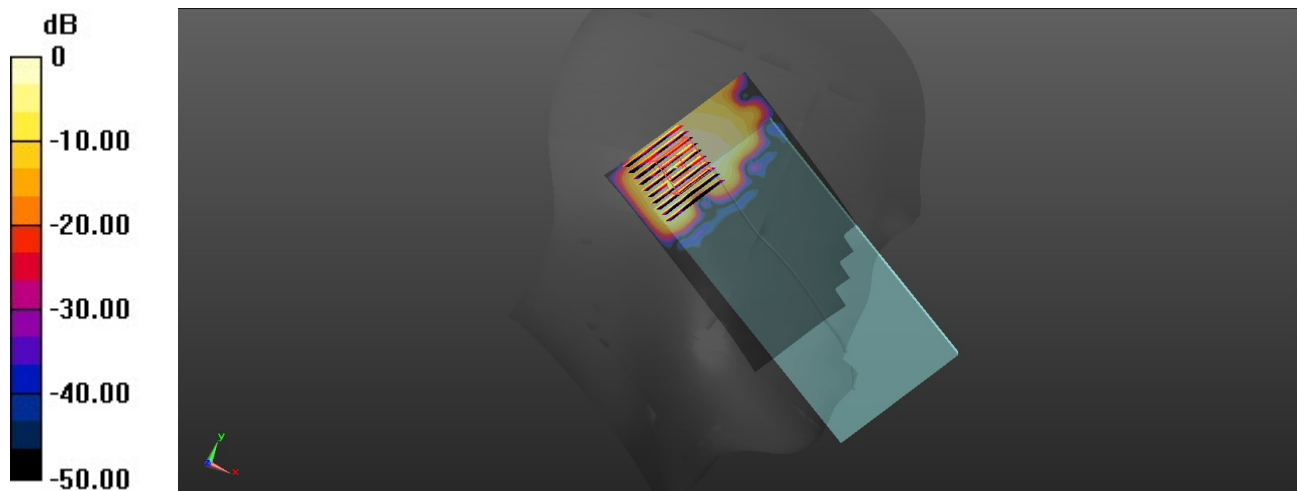
Ch155/Zoom Scan (10x10x7)/Cube 0: Measurement grid: dx=4mm, dy=4mm, dz=1.4mm

Reference Value = 5.498 V/m; Power Drift = -0.02 dB

Peak SAR (extrapolated) = 0.980 W/kg

SAR(1 g) = 0.117 W/kg; SAR(10 g) = 0.044 W/kg

Maximum value of SAR (measured) = 0.274 W/kg



0 dB = 0.274 W/kg

23_Bluetooth_DH5 1Mbps_Right Cheek_Ch39

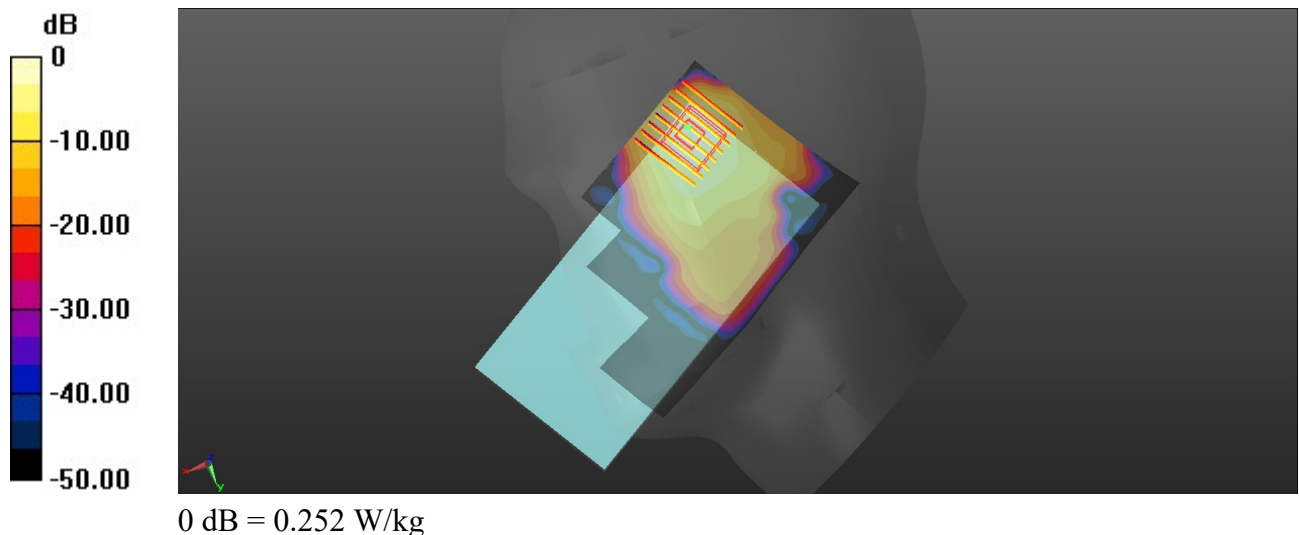
Communication System: UID 0, Bluetooth (0); Frequency: 2441 MHz; Duty Cycle: 1:1.298
Medium: HSL_2450_210524 Medium parameters used: $f = 2441$ MHz; $\sigma = 1.824$ S/m; $\epsilon_r = 39.684$; $\rho = 1000$ kg/m³
Ambient Temperature : 23.7 °C; Liquid Temperature : 22.8 °C

DASY5 Configuration:

- Probe: EX3DV4 - SN7641; ConvF(8.29, 8.29, 8.29); Calibrated: 2021/3/15
- Sensor-Surface: 1.4mm (Mechanical Surface Detection)
- Electronics: DAE4 Sn1664; Calibrated: 2021/3/1
- Phantom: Twin-SAM V8.0 (Right); Type: QD 000 P41 AA; Serial: 2033
- Measurement SW: DASY52, Version 52.10 (4); SEMCAD X Version 14.6.14 (7483)

Ch39/Area Scan (81x151x1): Interpolated grid: dx=1.200 mm, dy=1.200 mm
Maximum value of SAR (interpolated) = 0.252 W/kg

Ch39/Zoom Scan (8x8x7)/Cube 0: Measurement grid: dx=5mm, dy=5mm, dz=5mm
Reference Value = 3.977 V/m; Power Drift = 0.09 dB
Peak SAR (extrapolated) = 0.312 W/kg
SAR(1 g) = 0.155 W/kg; SAR(10 g) = 0.069 W/kg
Maximum value of SAR (measured) = 0.252 W/kg



24_GSM850_GPRS(3 Tx slots)_Back_5mm_Ch189

Communication System: UID 0, GPRS/EDGE11 (0); Frequency: 836.4 MHz; Duty Cycle: 1:2.77
 Medium: HSL_835_210602 Medium parameters used: $f = 836.5$ MHz; $\sigma = 0.917$ S/m; $\epsilon_r = 41.014$; $\rho = 1000$ kg/m³

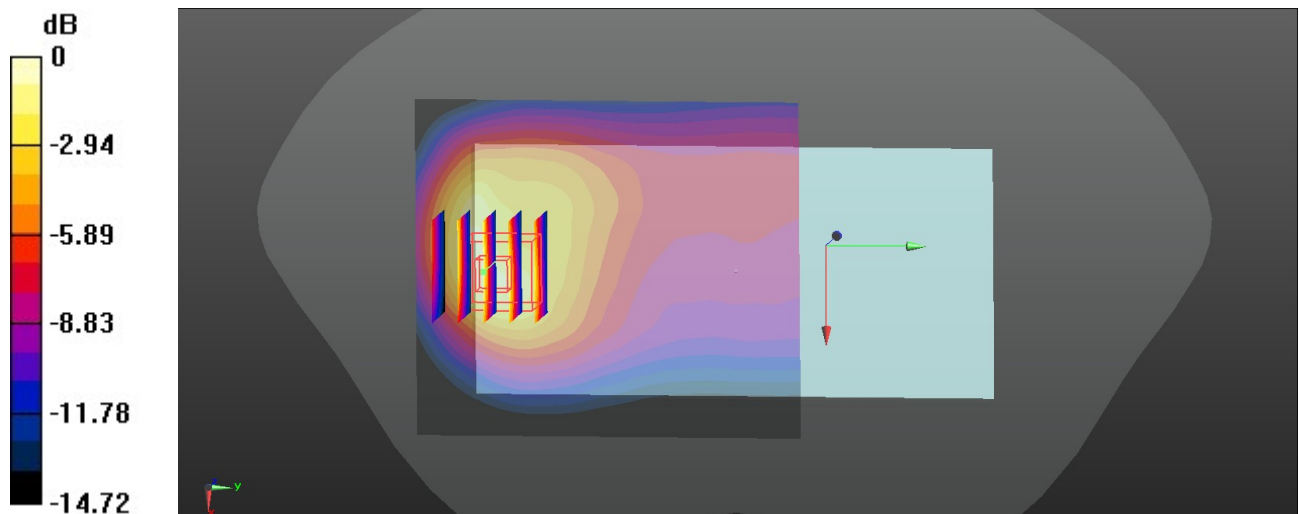
Ambient Temperature : 23.6 °C; Liquid Temperature : 22.6 °C

DASY5 Configuration:

- Probe: EX3DV4 - SN7641; ConvF(10.9, 10.9, 10.9); Calibrated: 2021/3/15
- Sensor-Surface: 1.4mm (Mechanical Surface Detection)
- Electronics: DAE4 Sn1664; Calibrated: 2021/3/1
- Phantom: Twin-SAM V8.0 (Right); Type: QD 000 P41 AA; Serial: 2033
- Measurement SW: DASY52, Version 52.10 (4); SEMCAD X Version 14.6.14 (7483)

Ch189/Area Scan (71x81x1): Interpolated grid: dx=1.500 mm, dy=1.500 mm
 Maximum value of SAR (interpolated) = 1.40 W/kg

Ch189/Zoom Scan (5x5x7)/Cube 0: Measurement grid: dx=8mm, dy=8mm, dz=5mm
 Reference Value = 16.97 V/m; Power Drift = 0.05 dB
 Peak SAR (extrapolated) = 1.92 W/kg
SAR(1 g) = 0.989 W/kg; SAR(10 g) = 0.549 W/kg
 Maximum value of SAR (measured) = 1.56 W/kg



0 dB = 1.56 W/kg

25_GSM1900_GPRS(2 Tx slots)_Bottom Side_5mm_Ch661

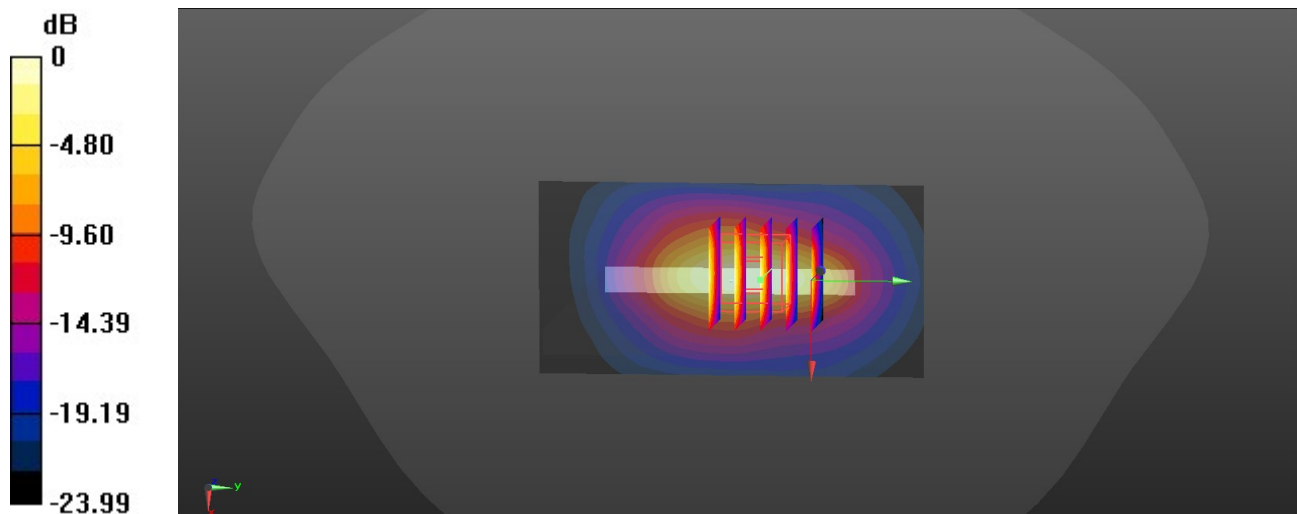
Communication System: UID 0, GPRS/EDGE10 (0); Frequency: 1880 MHz; Duty Cycle: 1:4.15
Medium: HSL_1900_210606 Medium parameters used: $f = 1880$ MHz; $\sigma = 1.412$ S/m; $\epsilon_r = 38.533$; $\rho = 1000$ kg/m³
Ambient Temperature : 23.4 °C; Liquid Temperature : 22.4 °C

DASY5 Configuration:

- Probe: EX3DV4 - SN7641; ConvF(9.05, 9.05, 9.05); Calibrated: 2021/3/15
- Sensor-Surface: 1.4mm (Mechanical Surface Detection)
- Electronics: DAE4 Sn1664; Calibrated: 2021/3/1
- Phantom: Twin-SAM V8.0 (Right); Type: QD 000 P41 AA; Serial: 2033
- Measurement SW: DASY52, Version 52.10 (4); SEMCAD X Version 14.6.14 (7483)

Ch661/Area Scan (41x81x1): Interpolated grid: $dx=1.500$ mm, $dy=1.500$ mm
Maximum value of SAR (interpolated) = 4.81 W/kg

Ch661/Zoom Scan (5x5x7)/Cube 0: Measurement grid: $dx=8$ mm, $dy=8$ mm, $dz=5$ mm
Reference Value = 57.70 V/m; Power Drift = 0.04 dB
Peak SAR (extrapolated) = 6.12 W/kg
SAR(1 g) = 0.96 W/kg; SAR(10 g) = 0.459 W/kg
Maximum value of SAR (measured) = 4.91 W/kg



0 dB = 4.91 W/kg

26_WCDMA V_RMC 12.2Kbps_Back_5mm_Ch4182

Communication System: UID 0, UMTS (0); Frequency: 836.4 MHz; Duty Cycle: 1:1
Medium: HSL_835_210602 Medium parameters used: $f = 836.5$ MHz; $\sigma = 0.917$ S/m; $\epsilon_r = 41.014$; $\rho = 1000$ kg/m³
Ambient Temperature : 23.6 °C; Liquid Temperature : 22.6 °C

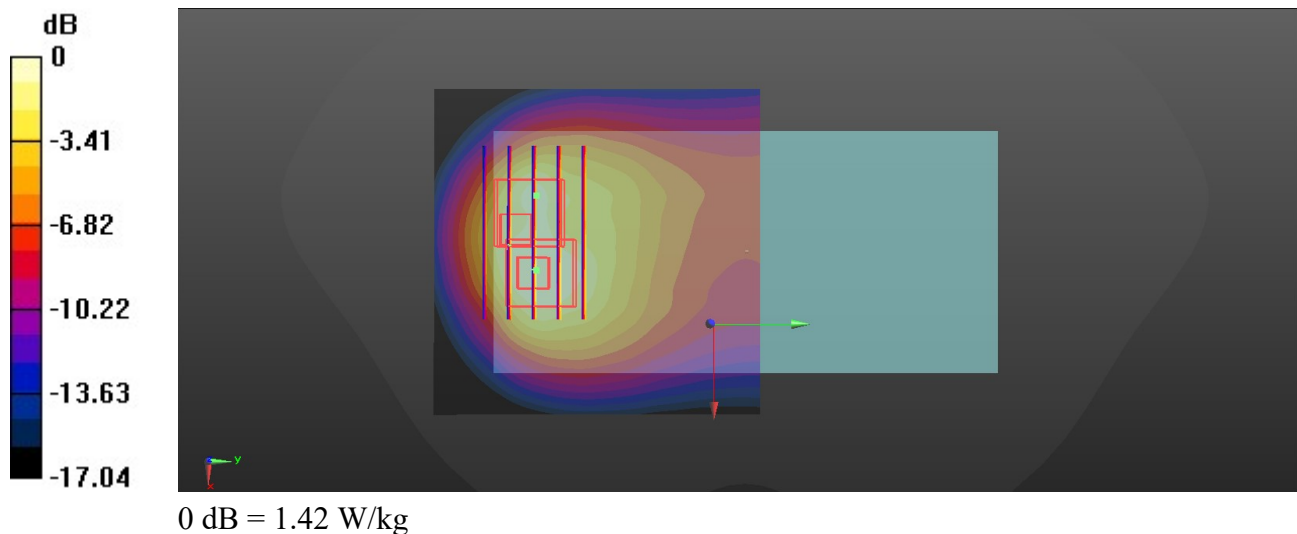
DASY5 Configuration:

- Probe: EX3DV4 - SN7641; ConvF(10.9, 10.9, 10.9); Calibrated: 2021/3/15
- Sensor-Surface: 1.4mm (Mechanical Surface Detection)
- Electronics: DAE4 Sn1664; Calibrated: 2021/3/1
- Phantom: Twin-SAM V8.0 (Right); Type: QD 000 P41 AA; Serial: 2033
- Measurement SW: DASY52, Version 52.10 (4); SEMCAD X Version 14.6.14 (7483)

Ch4182/Area Scan (71x71x1): Interpolated grid: dx=1.500 mm, dy=1.500 mm
Maximum value of SAR (interpolated) = 1.82 W/kg

Ch4182/Zoom Scan (5x5x7)/Cube 0: Measurement grid: dx=8mm, dy=8mm, dz=5mm
Reference Value = 16.76 V/m; Power Drift = 0.04 dB
Peak SAR (extrapolated) = 2.07 W/kg
SAR(1 g) = 1.02 W/kg; SAR(10 g) = 0.560 W/kg
Maximum value of SAR (measured) = 1.65 W/kg

Ch4182/Zoom Scan (5x5x7)/Cube 1: Measurement grid: dx=8mm, dy=8mm, dz=5mm
Reference Value = 16.76 V/m; Power Drift = 0.04 dB
Peak SAR (extrapolated) = 1.85 W/kg
SAR(1 g) = 0.783 W/kg; SAR(10 g) = 0.424 W/kg
Maximum value of SAR (measured) = 1.42 W/kg



27_WCDMA IV_RMC 12.2Kbps_Bottom Side_5mm_Ch1513

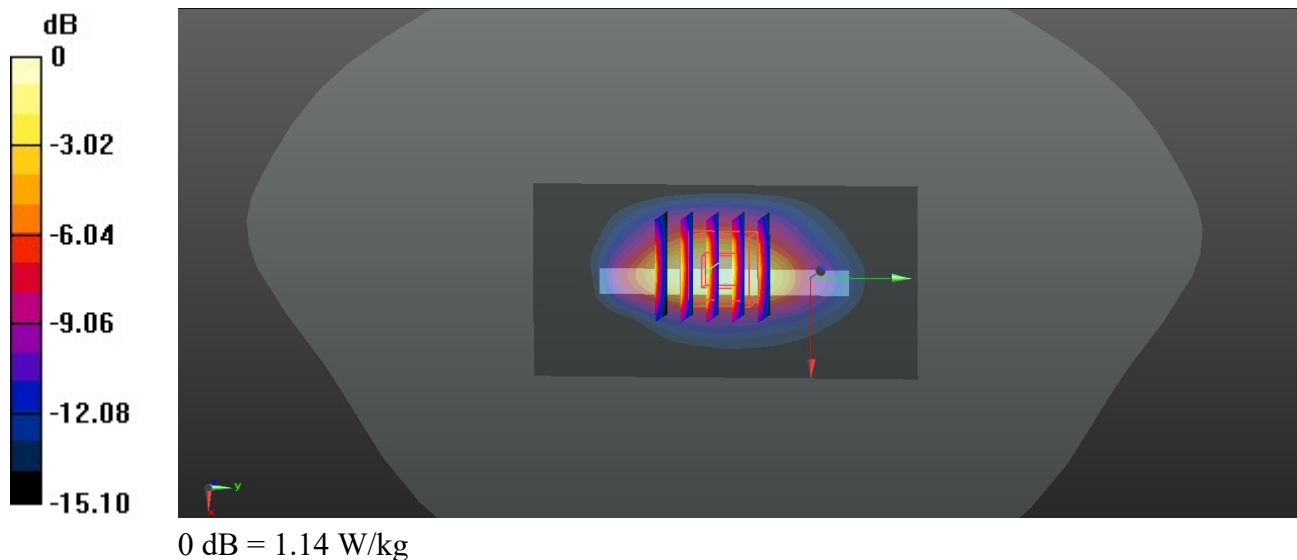
Communication System: UID 0, UMTS (0); Frequency: 1752.6 MHz; Duty Cycle: 1:1
Medium: HSL_1750_210604 Medium parameters used: $f = 1753$ MHz; $\sigma = 1.382$ S/m; $\epsilon_r = 41.323$; $\rho = 1000$ kg/m³
Ambient Temperature : 23.5 °C; Liquid Temperature : 22.6 °C

DASY5 Configuration:

- Probe: EX3DV4 - SN7641; ConvF(9.41, 9.41, 9.41); Calibrated: 2021/3/15
- Sensor-Surface: 1.4mm (Mechanical Surface Detection)
- Electronics: DAE4 Sn1664; Calibrated: 2021/3/1
- Phantom: Twin-SAM V8.0 (Right); Type: QD 000 P41 AA; Serial: 2033
- Measurement SW: DASY52, Version 52.10 (4); SEMCAD X Version 14.6.14 (7483)

Ch1513/Area Scan (41x81x1): Interpolated grid: dx=1.500 mm, dy=1.500 mm
Maximum value of SAR (interpolated) = 1.26 W/kg

Ch1513/Zoom Scan (5x5x7)/Cube 0: Measurement grid: dx=8mm, dy=8mm, dz=5mm
Reference Value = 28.49 V/m; Power Drift = 0.16 dB
Peak SAR (extrapolated) = 1.39 W/kg
SAR(1 g) = 0.736 W/kg; SAR(10 g) = 0.372 W/kg
Maximum value of SAR (measured) = 1.14 W/kg



28_WCDMA II_RMC 12.2Kbps_Bottom Side_5mm_Ch9262

Communication System: UID 0, UMTS (0); Frequency: 1852.4 MHz; Duty Cycle: 1:1

Medium: HSL_1900_210606 Medium parameters used: $f = 1852.4$ MHz; $\sigma = 1.383$ S/m; $\epsilon_r = 38.64$; $\rho = 1000$ kg/m³

Ambient Temperature : 23.4 °C; Liquid Temperature : 22.4 °C

DASY5 Configuration:

- Probe: EX3DV4 - SN7641; ConvF(9.05, 9.05, 9.05); Calibrated: 2021/3/15
- Sensor-Surface: 1.4mm (Mechanical Surface Detection)
- Electronics: DAE4 Sn1664; Calibrated: 2021/3/1
- Phantom: Twin-SAM V8.0 (Right); Type: QD 000 P41 AA; Serial: 2033
- Measurement SW: DASY52, Version 52.10 (4); SEMCAD X Version 14.6.14 (7483)

Ch9262/Area Scan (41x81x1): Interpolated grid: dx=1.500 mm, dy=1.500 mm

Maximum value of SAR (interpolated) = 1.70 W/kg

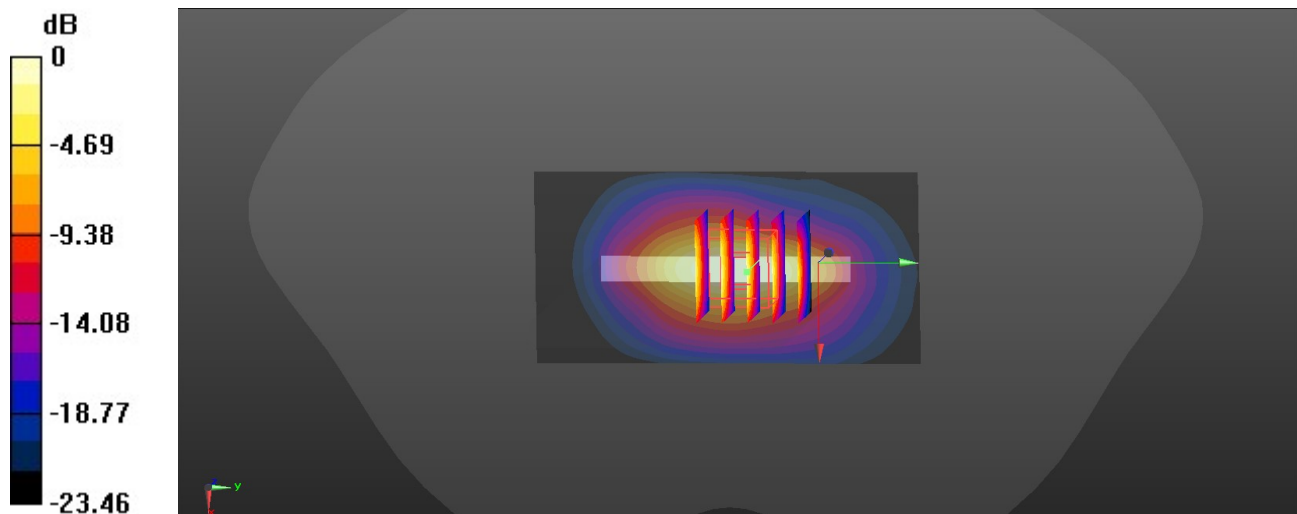
Ch9262/Zoom Scan (5x5x7)/Cube 0: Measurement grid: dx=8mm, dy=8mm, dz=5mm

Reference Value = 35.48 V/m; Power Drift = -0.04 dB

Peak SAR (extrapolated) = 2.16 W/kg

SAR(1 g) = 1.01 W/kg; SAR(10 g) = 0.474 W/kg

Maximum value of SAR (measured) = 1.72 W/kg



0 dB = 1.72 W/kg

29_LTE Band 12_10M_QPSK_1RB_25Offset_Back_5mm_Ch23095

Communication System: UID 0, LTE (0); Frequency: 707.5 MHz; Duty Cycle: 1:1

Medium: HSL_750_210530 Medium parameters used: $f = 707.5$ MHz; $\sigma = 0.905$ S/m; $\epsilon_r = 41.633$; $\rho = 1000$ kg/m³

Ambient Temperature : 23.3 °C; Liquid Temperature : 22.4 °C

DASY5 Configuration:

- Probe: EX3DV4 - SN7641; ConvF(11.05, 11.05, 11.05); Calibrated: 2021/3/15
- Sensor-Surface: 1.4mm (Mechanical Surface Detection)
- Electronics: DAE4 Sn1664; Calibrated: 2021/3/1
- Phantom: Twin-SAM V8.0 (Right); Type: QD 000 P41 AA; Serial: 2033
- Measurement SW: DASY52, Version 52.10 (4); SEMCAD X Version 14.6.14 (7483)

Ch23095/Area Scan (71x131x1): Interpolated grid: dx=1.500 mm, dy=1.500 mm

Maximum value of SAR (interpolated) = 0.991 W/kg

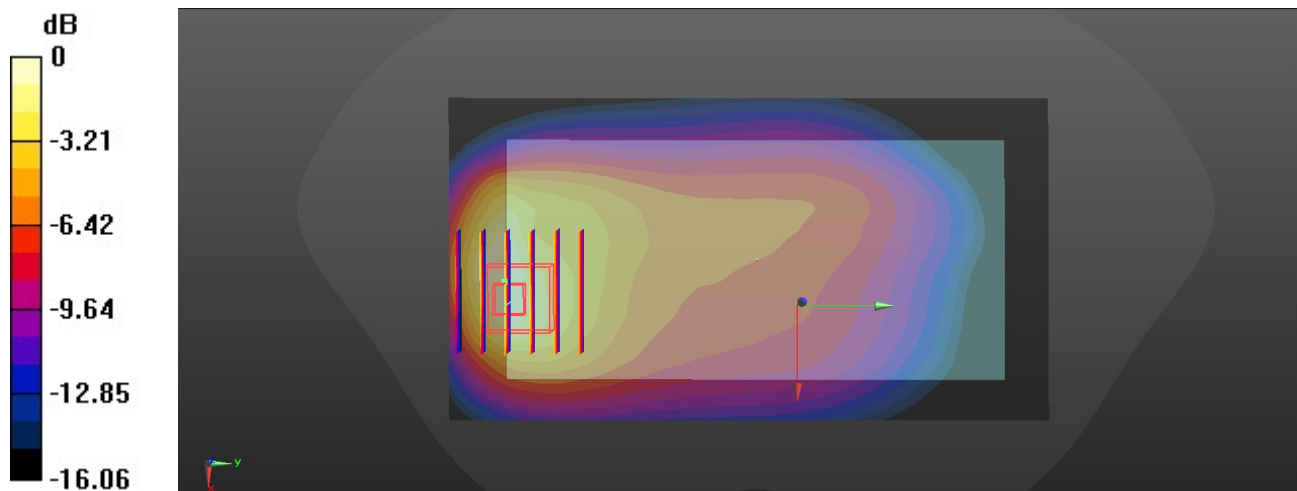
Ch23095/Zoom Scan (6x6x7)/Cube 0: Measurement grid: dx=8mm, dy=8mm, dz=5mm

Reference Value = 16.54 V/m; Power Drift = -0.03 dB

Peak SAR (extrapolated) = 1.19 W/kg

SAR(1 g) = 0.584 W/kg; SAR(10 g) = 0.327 W/kg

Maximum value of SAR (measured) = 0.944 W/kg



0 dB = 0.944 W/kg

30_LTE Band 13_10M_QPSK_1RB_25Offset_Back_5mm_Ch23230

Communication System: UID 0, LTE (0); Frequency: 782 MHz; Duty Cycle: 1:1

Medium: HSL_750_210530 Medium parameters used: $f = 782 \text{ MHz}$; $\sigma = 0.914 \text{ S/m}$; $\epsilon_r = 40.272$; $\rho = 1000 \text{ kg/m}^3$

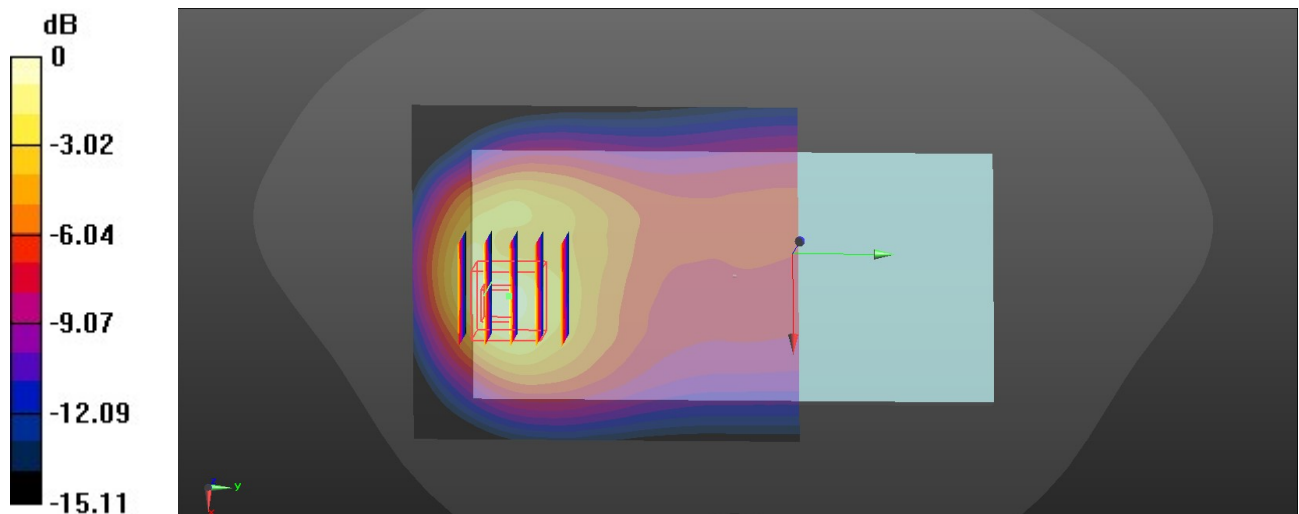
Ambient Temperature : 23.3 °C; Liquid Temperature : 22.4 °C

DASY5 Configuration:

- Probe: EX3DV4 - SN7641; ConvF(11.05, 11.05, 11.05); Calibrated: 2021/3/15
- Sensor-Surface: 1.4mm (Mechanical Surface Detection)
- Electronics: DAE4 Sn1664; Calibrated: 2021/3/1
- Phantom: Twin-SAM V8.0 (Right); Type: QD 000 P41 AA; Serial: 2033
- Measurement SW: DASY52, Version 52.10 (4); SEMCAD X Version 14.6.14 (7483)

Ch23230/Area Scan (71x81x1): Interpolated grid: $dx=1.500 \text{ mm}$, $dy=1.500 \text{ mm}$
Maximum value of SAR (interpolated) = 1.11 W/kg

Ch23230/Zoom Scan (5x5x7)/Cube 0: Measurement grid: $dx=8\text{mm}$, $dy=8\text{mm}$, $dz=5\text{mm}$
Reference Value = 17.11 V/m; Power Drift = 0.04 dB
Peak SAR (extrapolated) = 1.59 W/kg
SAR(1 g) = 0.778 W/kg; SAR(10 g) = 0.430 W/kg
Maximum value of SAR (measured) = 1.25 W/kg



0 dB = 1.25 W/kg

31_LTE Band 26_15M_QPSK_1RB_37Offset_Back_5mm_Ch26865

Communication System: UID 0, LTE (0); Frequency: 831.5 MHz; Duty Cycle: 1:1
 Medium: HSL_835_210602 Medium parameters used: $f = 831.5 \text{ MHz}$; $\sigma = 0.975 \text{ S/m}$; $\epsilon_r = 39.735$; $\rho = 1000 \text{ kg/m}^3$
 Ambient Temperature : 23.6 °C; Liquid Temperature : 22.6 °C

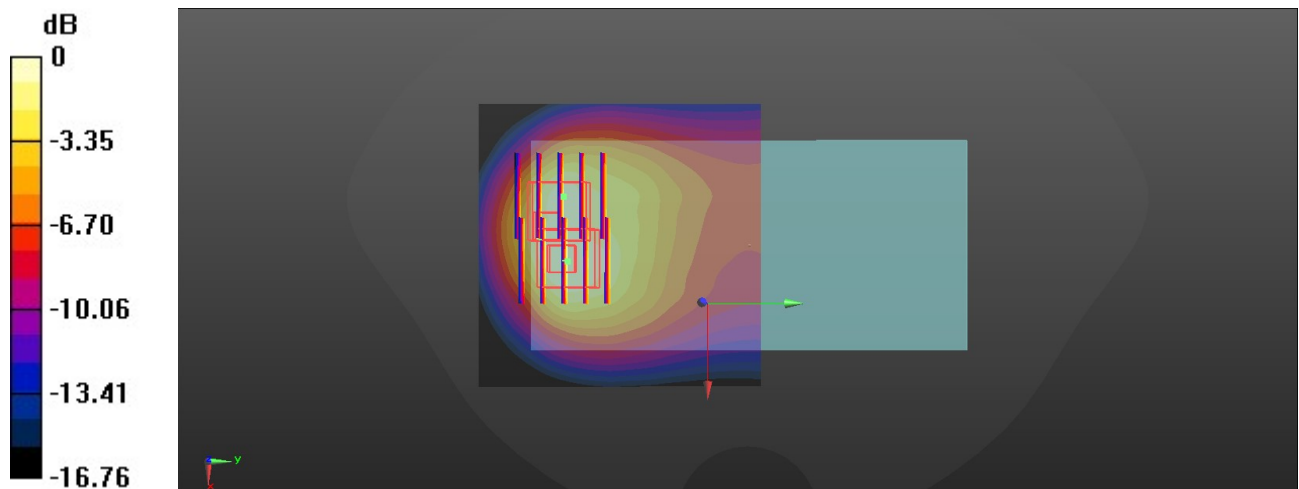
DASY5 Configuration:

- Probe: EX3DV4 - SN7641; ConvF(10.9, 10.9, 10.9); Calibrated: 2021/3/15
- Sensor-Surface: 1.4mm (Mechanical Surface Detection)
- Electronics: DAE4 Sn1664; Calibrated: 2021/3/1
- Phantom: Twin-SAM V8.0 (Right); Type: QD 000 P41 AA; Serial: 2033
- Measurement SW: DASY52, Version 52.10 (4); SEMCAD X Version 14.6.14 (7483)

Ch26865/Area Scan (71x71x1): Interpolated grid: $dx=1.500 \text{ mm}$, $dy=1.500 \text{ mm}$
 Maximum value of SAR (interpolated) = 1.72 W/kg

Ch26865/Zoom Scan (5x5x7)/Cube 0: Measurement grid: $dx=8\text{mm}$, $dy=8\text{mm}$, $dz=5\text{mm}$
 Reference Value = 16.08 V/m; Power Drift = 0.05 dB
 Peak SAR (extrapolated) = 1.91 W/kg
SAR(1 g) = 0.959 W/kg; SAR(10 g) = 0.531 W/kg
 Maximum value of SAR (measured) = 1.51 W/kg

Ch26865/Zoom Scan (5x5x7)/Cube 1: Measurement grid: $dx=8\text{mm}$, $dy=8\text{mm}$, $dz=5\text{mm}$
 Reference Value = 16.08 V/m; Power Drift = 0.05 dB
 Peak SAR (extrapolated) = 1.78 W/kg
SAR(1 g) = 0.756 W/kg; SAR(10 g) = 0.407 W/kg
 Maximum value of SAR (measured) = 1.33 W/kg



0 dB = 1.33 W/kg

32_LTE Band 66_20M_QPSK_50RB_24Offset_Bottom Side_5mm_Ch132322

Communication System: UID 0, LTE (0); Frequency: 1745 MHz; Duty Cycle: 1:1

Medium: HSL_1750_210604 Medium parameters used: $f = 1745$ MHz; $\sigma = 1.373$ S/m; $\epsilon_r = 41.368$; $\rho = 1000$ kg/m³

Ambient Temperature : 23.5 °C; Liquid Temperature : 22.6 °C

DASY5 Configuration:

- Probe: EX3DV4 - SN7641; ConvF(9.41, 9.41, 9.41); Calibrated: 2021/3/15
- Sensor-Surface: 1.4mm (Mechanical Surface Detection)
- Electronics: DAE4 Sn1664; Calibrated: 2021/3/1
- Phantom: Twin-SAM V8.0 (Right); Type: QD 000 P41 AA; Serial: 2033
- Measurement SW: DASY52, Version 52.10 (4); SEMCAD X Version 14.6.14 (7483)

Ch132322/Area Scan (41x81x1): Interpolated grid: dx=1.500 mm, dy=1.500 mm

Maximum value of SAR (interpolated) = 1.92 W/kg

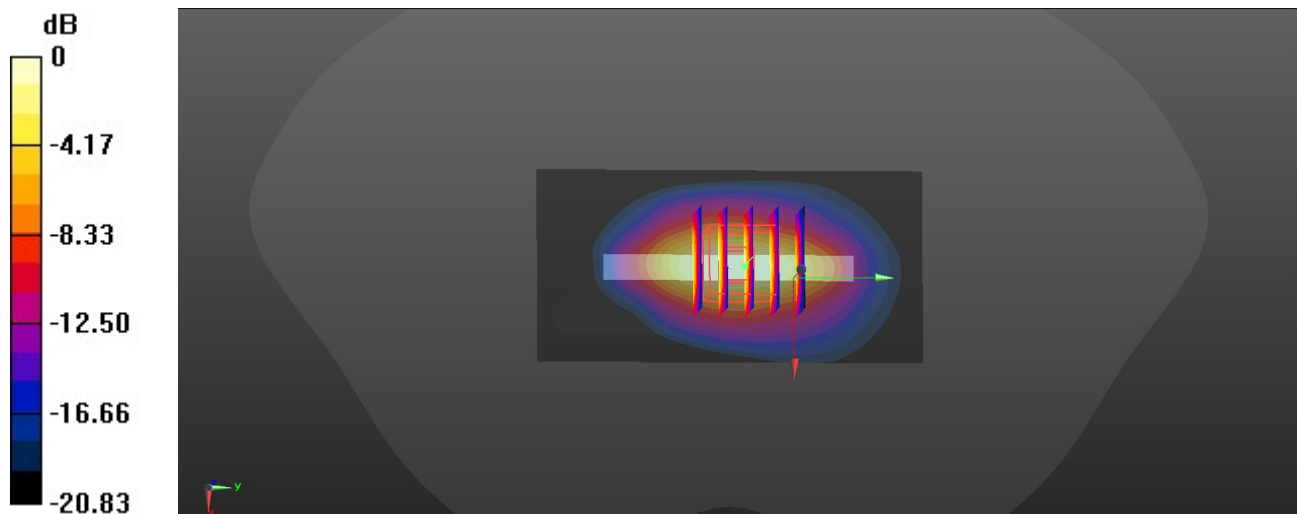
Ch132322/Zoom Scan (5x5x7)/Cube 0: Measurement grid: dx=8mm, dy=8mm, dz=5mm

Reference Value = 37.93 V/m; Power Drift = 0.02 dB

Peak SAR (extrapolated) = 2.33 W/kg

SAR(1 g) = 1.12 W/kg; SAR(10 g) = 0.534 W/kg

Maximum value of SAR (measured) = 1.85 W/kg



0 dB = 1.85 W/kg

33_LTE Band 2_20M_QPSK_50RB_24Offset_Bottom Side_5mm_Ch18900

Communication System: UID 0, LTE (0); Frequency: 1880 MHz; Duty Cycle: 1:1

Medium: HSL_1900_210606 Medium parameters used: $f = 1880$ MHz; $\sigma = 1.412$ S/m; $\epsilon_r = 38.533$; $\rho = 1000$ kg/m³

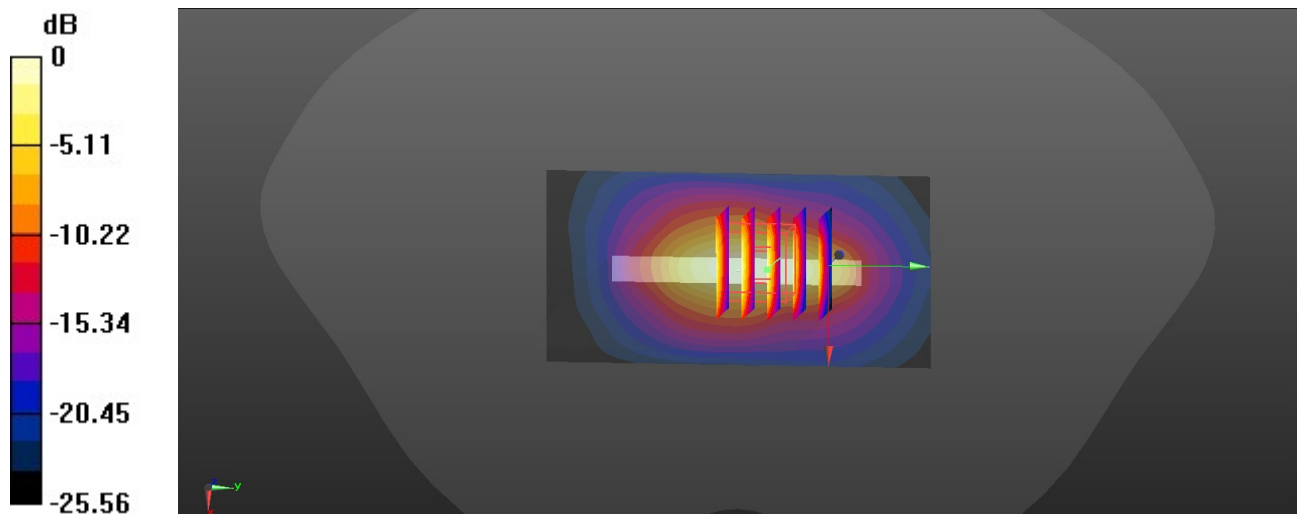
Ambient Temperature : 23.4 °C; Liquid Temperature : 22.4 °C

DASY5 Configuration:

- Probe: EX3DV4 - SN7641; ConvF(9.05, 9.05, 9.05); Calibrated: 2021/3/15
- Sensor-Surface: 1.4mm (Mechanical Surface Detection)
- Electronics: DAE4 Sn1664; Calibrated: 2021/3/1
- Phantom: Twin-SAM V8.0 (Right); Type: QD 000 P41 AA; Serial: 2033
- Measurement SW: DASY52, Version 52.10 (4); SEMCAD X Version 14.6.14 (7483)

Ch18900/Area Scan (41x81x1): Interpolated grid: dx=1.500 mm, dy=1.500 mm
Maximum value of SAR (interpolated) = 1.75 W/kg

Ch18900/Zoom Scan (5x5x7)/Cube 0: Measurement grid: dx=8mm, dy=8mm, dz=5mm
Reference Value = 3.107 V/m; Power Drift = 0.09 dB
Peak SAR (extrapolated) = 2.17 W/kg
SAR(1 g) = 0.976 W/kg; SAR(10 g) = 0.445 W/kg
Maximum value of SAR (measured) = 1.71 W/kg



0 dB = 1.71 W/kg

34_LTE Band 7_20M_QPSK_50RB_24Offset_Bottom Side_5mm_Ch20850

Communication System: UID 0, LTE (0); Frequency: 2510 MHz; Duty Cycle: 1:1

Medium: HSL_2600_210610 Medium parameters used: $f = 2510$ MHz; $\sigma = 1.953$ S/m; $\epsilon_r = 37.621$; $\rho = 1000$ kg/m³

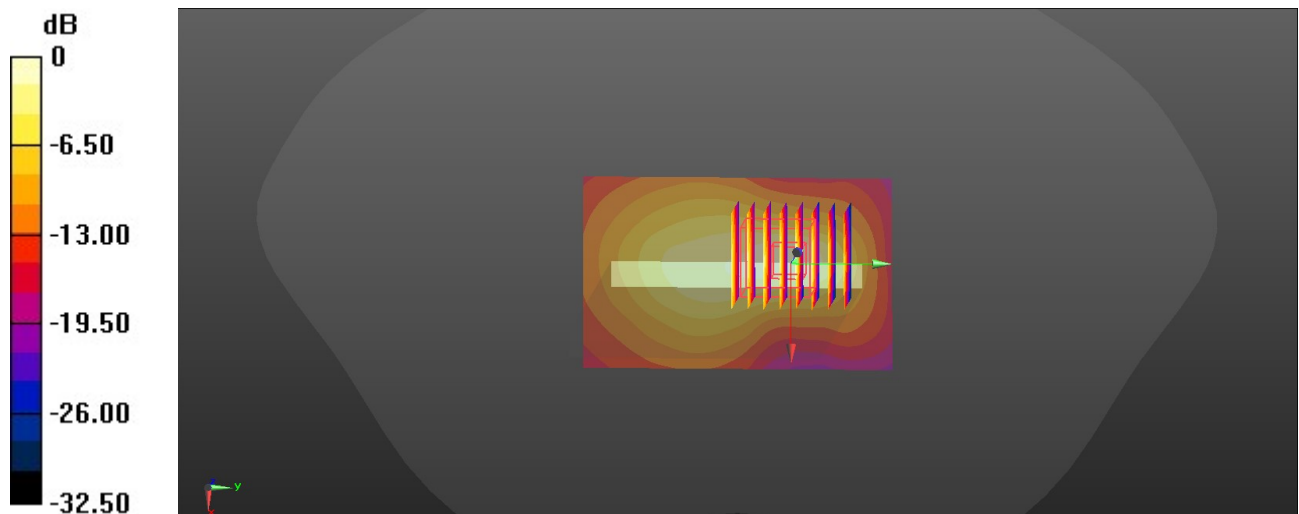
Ambient Temperature : 23.5 °C; Liquid Temperature : 22.6 °C

DASY5 Configuration:

- Probe: EX3DV4 - SN7641; ConvF(7.94, 7.94, 7.94); Calibrated: 2021/3/15
- Sensor-Surface: 1.4mm (Mechanical Surface Detection)
- Electronics: DAE4 Sn1664; Calibrated: 2021/3/1
- Phantom: Twin-SAM V8.0 (Right); Type: QD 000 P41 AA; Serial: 2033
- Measurement SW: DASY52, Version 52.10 (4); SEMCAD X Version 14.6.14 (7483)

Ch20850/Area Scan (51x81x1): Interpolated grid: dx=1.200 mm, dy=1.200 mm
 Maximum value of SAR (interpolated) = 1.91 W/kg

Ch20850/Zoom Scan (7x8x7)/Cube 0: Measurement grid: dx=5mm, dy=5mm, dz=5mm
 Reference Value = 25.87 V/m; Power Drift = -0.03 dB
 Peak SAR (extrapolated) = 2.75 W/kg
SAR(1 g) = 1.03 W/kg; SAR(10 g) = 0.427 W/kg
 Maximum value of SAR (measured) = 1.99 W/kg



0 dB = 1.99 W/kg

35_LTE Band 41_20M_QPSK_50RB_24Offset_Bottom Side_5mm_Ch39750

Communication System: UID 0, LTE (0); Frequency: 2506 MHz; Duty Cycle: 1:1.59

Medium: HSL_2600_210610 Medium parameters used: $f = 2506$ MHz; $\sigma = 1.949$ S/m; $\epsilon_r = 37.636$; $\rho = 1000$ kg/m³

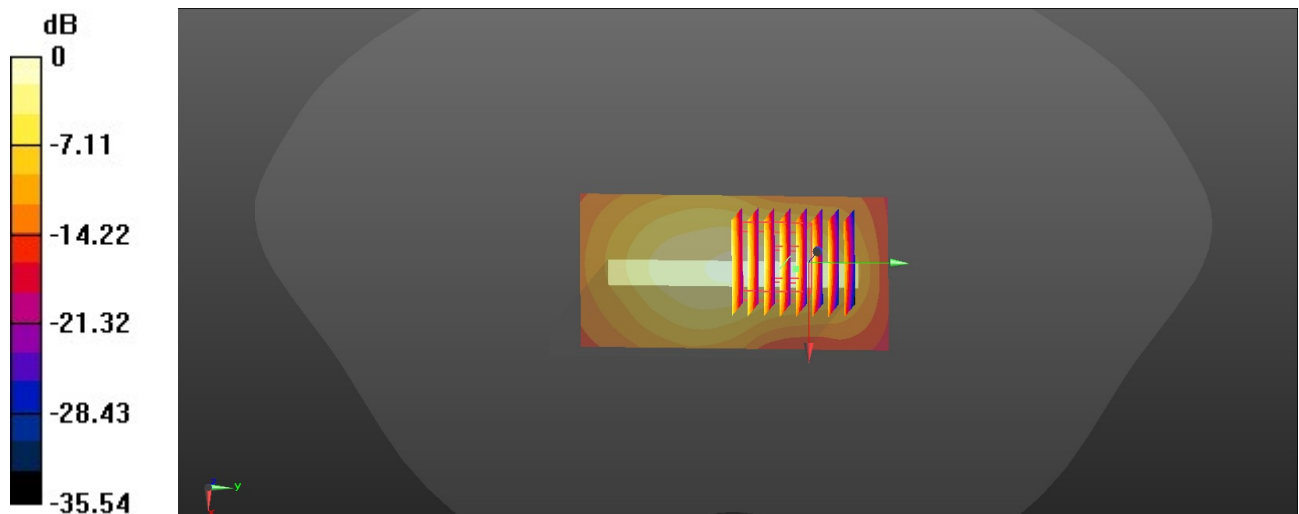
Ambient Temperature : 23.5 °C; Liquid Temperature : 22.6 °C

DASY5 Configuration:

- Probe: EX3DV4 - SN7641; ConvF(7.94, 7.94, 7.94); Calibrated: 2021/3/15
- Sensor-Surface: 1.4mm (Mechanical Surface Detection)
- Electronics: DAE4 Sn1664; Calibrated: 2021/3/1
- Phantom: Twin-SAM V8.0 (Right); Type: QD 000 P41 AA; Serial: 2033
- Measurement SW: DASY52, Version 52.10 (4); SEMCAD X Version 14.6.14 (7483)

Ch39750/Area Scan (41x81x1): Interpolated grid: dx=1.200 mm, dy=1.200 mm
 Maximum value of SAR (interpolated) = 2.07 W/kg

Ch39750/Zoom Scan (7x8x7)/Cube 0: Measurement grid: dx=5mm, dy=5mm, dz=5mm
 Reference Value = 27.68 V/m; Power Drift = -0.13 dB
 Peak SAR (extrapolated) = 2.89 W/kg
SAR(1 g) = 1.08 W/kg; SAR(10 g) = 0.450 W/kg
 Maximum value of SAR (measured) = 2.06 W/kg



0 dB = 2.06 W/kg