

05_WCDMA II_RMC 12.2Kbps_Left Cheek_Ch9538

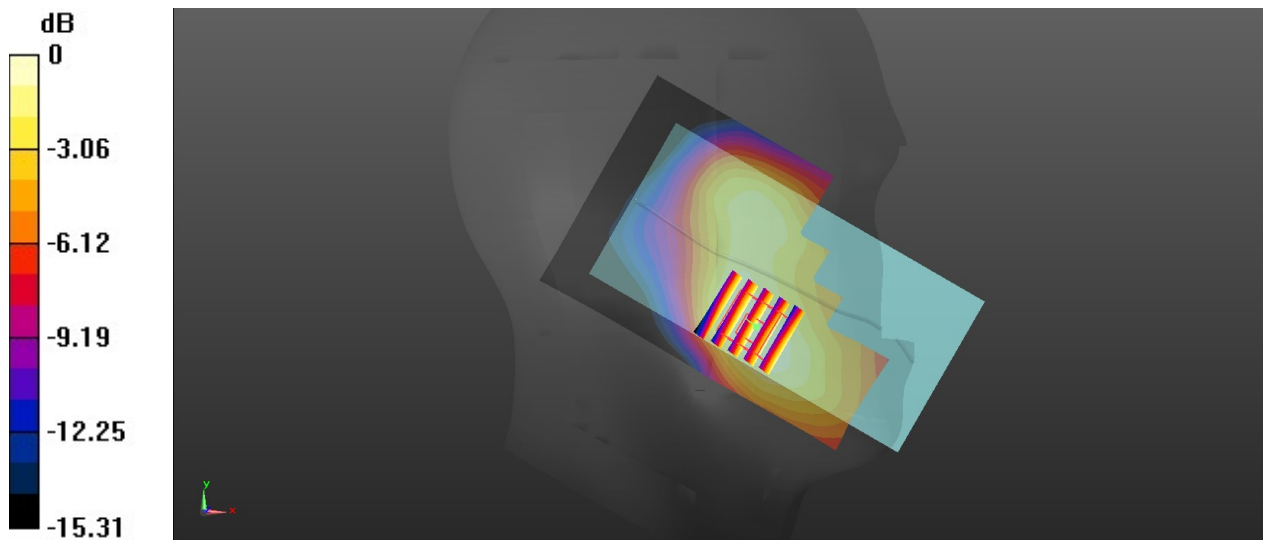
Communication System: UID 0, UMTS (0); Frequency: 1907.6 MHz; Duty Cycle: 1:1
Medium: HSL_1900_210303 Medium parameters used: $f = 1908$ MHz; $\sigma = 1.429$ S/m; $\epsilon_r = 41.247$;
 $\rho = 1000$ kg/m³
Ambient Temperature : 23.7 °C; Liquid Temperature : 22.5 °C

DASY5 Configuration:

- Probe: EX3DV4 - SN7577; ConvF(8.34, 8.34, 8.34); Calibrated: 2020.09.30
- Sensor-Surface: 1.4mm (Mechanical Surface Detection)
- Electronics: DAE4 Sn715; Calibrated: 2020.07.27
- Phantom: Twin-SAM1(P1aP2a20); Type: QD 000 P40 CD; Serial: TP:1670
- Measurement SW: DASY52, Version 52.10 (3); SEMCAD X Version 14.6.13 (7474)

Ch9538/Area Scan (71x121x1): Interpolated grid: dx=1.500 mm, dy=1.500 mm
Maximum value of SAR (interpolated) = 0.380 W/kg

Ch9538/Zoom Scan (5x5x7)/Cube 0: Measurement grid: dx=8mm, dy=8mm, dz=5mm
Reference Value = 4.171 V/m; Power Drift = -0.10 dB
Peak SAR (extrapolated) = 0.426 W/kg
SAR(1 g) = 0.269 W/kg; SAR(10 g) = 0.171 W/kg
Maximum value of SAR (measured) = 0.360 W/kg



0 dB = 0.360 W/kg

06_LTE Band 5_10M_QPSK_1RB_0Offset_Right Cheek_Ch20525

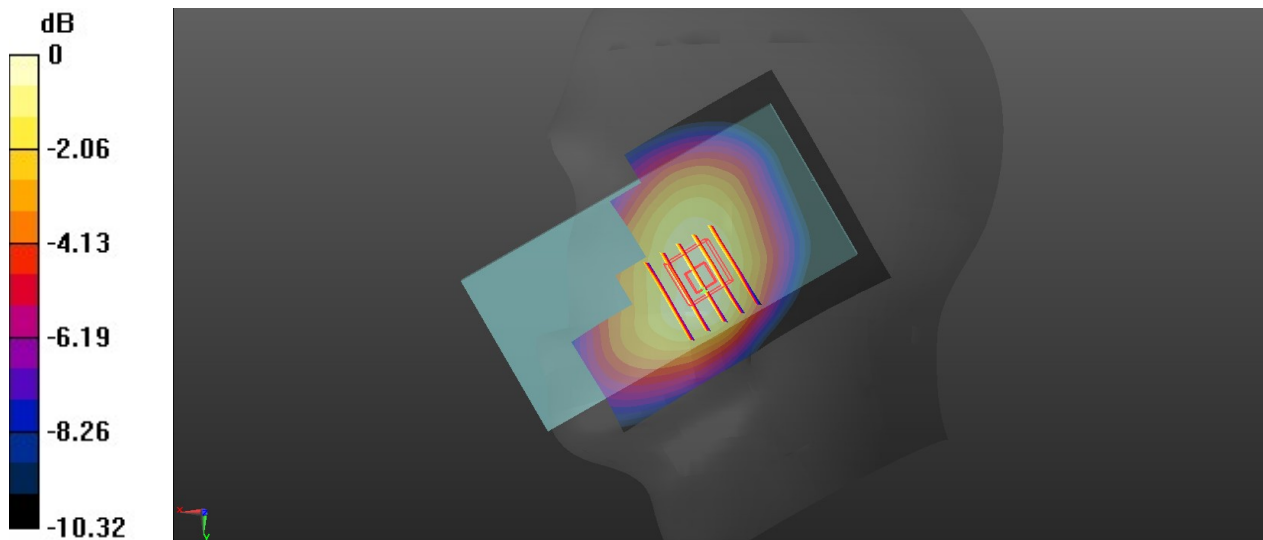
Communication System: UID 0, LTE (0); Frequency: 836.5 MHz; Duty Cycle: 1:1
Medium: HSL_835_210301 Medium parameters used: $f = 836.5$ MHz; $\sigma = 0.888$ S/m; $\epsilon_r = 41.978$;
 $\rho = 1000$ kg/m³
Ambient Temperature : 23.5 °C; Liquid Temperature : 22.7 °C

DASY5 Configuration:

- Probe: EX3DV4 - SN7577; ConvF(9.54, 9.54, 9.54); Calibrated: 2020.09.30
- Sensor-Surface: 1.4mm (Mechanical Surface Detection)
- Electronics: DAE4 Sn715; Calibrated: 2020.07.27
- Phantom: Twin-SAM1(P1aP2a20); Type: QD 000 P40 CD; Serial: TP:1670
- Measurement SW: DASY52, Version 52.10 (3); SEMCAD X Version 14.6.13 (7474)

Ch20525/Area Scan (71x121x1): Interpolated grid: dx=1.500 mm, dy=1.500 mm
Maximum value of SAR (interpolated) = 0.370 W/kg

Ch20525/Zoom Scan (6x5x7)/Cube 0: Measurement grid: dx=8mm, dy=8mm, dz=5mm
Reference Value = 5.565 V/m; Power Drift = 0.06 dB
Peak SAR (extrapolated) = 0.400 W/kg
SAR(1 g) = 0.316 W/kg; SAR(10 g) = 0.242 W/kg
Maximum value of SAR (measured) = 0.371 W/kg



0 dB = 0.371 W/kg

07_LTE Band 66_20M_QPSK_1RB_0Offset_Right Cheek_Ch132322

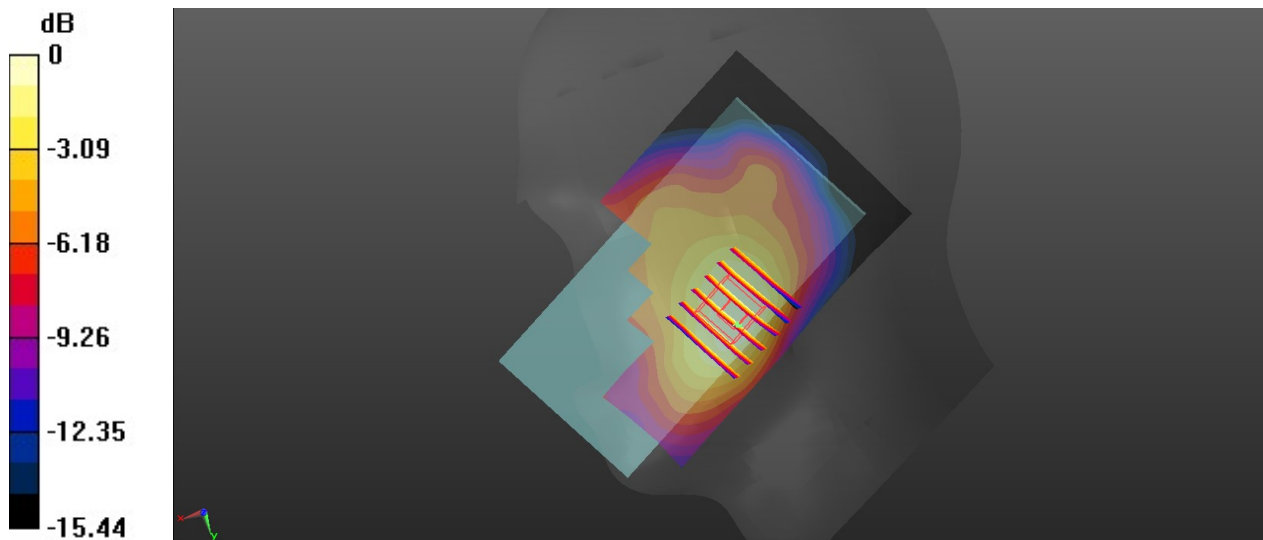
Communication System: UID 0, LTE (0); Frequency: 1745 MHz; Duty Cycle: 1:1
Medium: HSL_1750_210307 Medium parameters used: $f = 1745$ MHz; $\sigma = 1.367$ S/m; $\epsilon_r = 39.963$;
 $\rho = 1000$ kg/m³
Ambient Temperature : 23.6 °C; Liquid Temperature : 22.8 °C

DASY5 Configuration:

- Probe: EX3DV4 - SN7577; ConvF(8.62, 8.62, 8.62); Calibrated: 2020.09.30
- Sensor-Surface: 1.4mm (Mechanical Surface Detection)
- Electronics: DAE4 Sn715; Calibrated: 2020.07.27
- Phantom: Twin-SAM1(P1aP2a20); Type: QD 000 P40 CD; Serial: TP:1670
- Measurement SW: DASY52, Version 52.10 (3); SEMCAD X Version 14.6.13 (7474)

Ch132322/Area Scan (71x121x1): Interpolated grid: dx=1.500 mm, dy=1.500 mm
Maximum value of SAR (interpolated) = 0.275 W/kg

Ch132322/Zoom Scan (6x6x7)/Cube 0: Measurement grid: dx=8mm, dy=8mm, dz=5mm
Reference Value = 5.513 V/m; Power Drift = -0.04 dB
Peak SAR (extrapolated) = 0.303 W/kg
SAR(1 g) = 0.206 W/kg; SAR(10 g) = 0.137 W/kg
Maximum value of SAR (measured) = 0.262 W/kg



0 dB = 0.275 W/kg

08_LTE Band 2_20M_QPSK_1RB_0Offset_Left Cheek_Ch18900

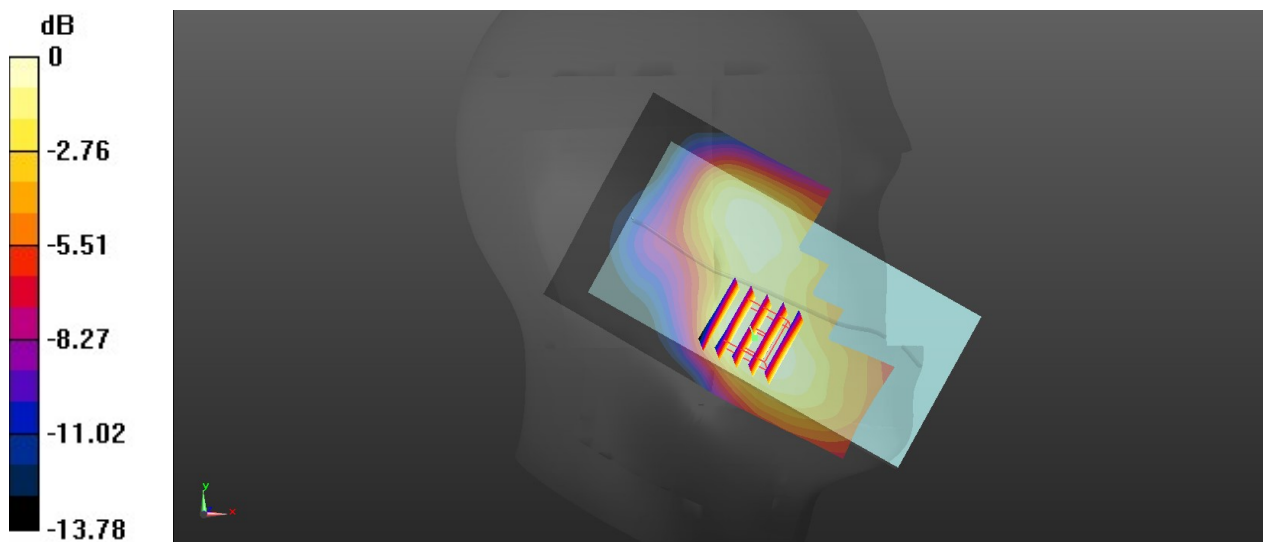
Communication System: UID 0, LTE (0); Frequency: 1880 MHz; Duty Cycle: 1:1
Medium: HSL_1900_210303 Medium parameters used: $f = 1880$ MHz; $\sigma = 1.401$ S/m; $\epsilon_r = 41.376$;
 $\rho = 1000$ kg/m³
Ambient Temperature : 23.7 °C; Liquid Temperature : 22.5 °C

DASY5 Configuration:

- Probe: EX3DV4 - SN7577; ConvF(8.34, 8.34, 8.34); Calibrated: 2020.09.30
- Sensor-Surface: 1.4mm (Mechanical Surface Detection)
- Electronics: DAE4 Sn715; Calibrated: 2020.07.27
- Phantom: Twin-SAM1(P1aP2a20); Type: QD 000 P40 CD; Serial: TP:1670
- Measurement SW: DASY52, Version 52.10 (3); SEMCAD X Version 14.6.13 (7474)

Ch18900/Area Scan (71x121x1): Interpolated grid: dx=1.500 mm, dy=1.500 mm
Maximum value of SAR (interpolated) = 0.359 W/kg

Ch18900/Zoom Scan (5x5x7)/Cube 0: Measurement grid: dx=8mm, dy=8mm, dz=5mm
Reference Value = 5.089 V/m; Power Drift = -0.02 dB
Peak SAR (extrapolated) = 0.403 W/kg
SAR(1 g) = 0.255 W/kg; SAR(10 g) = 0.167 W/kg
Maximum value of SAR (measured) = 0.339 W/kg



0 dB = 0.339 W/kg

09_LTE Band 7_20M_QPSK_1RB_99Offset_Left Cheek_Ch21350

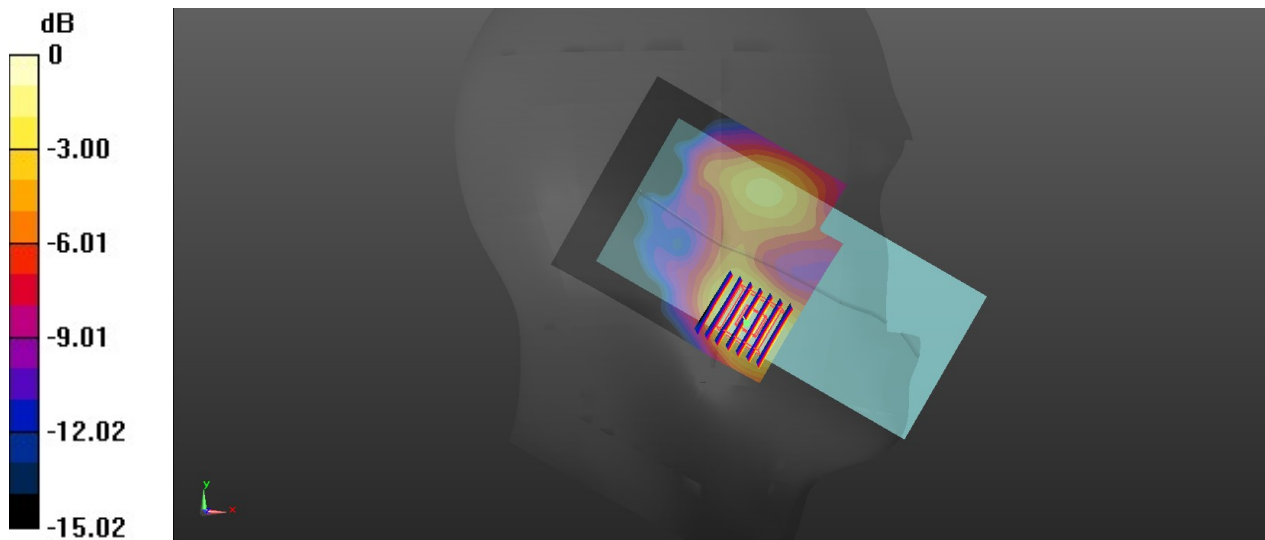
Communication System: UID 0, LTE (0); Frequency: 2560 MHz; Duty Cycle: 1:1
Medium: HSL_2600_210305 Medium parameters used: $f = 2560$ MHz; $\sigma = 1.877$ S/m; $\epsilon_r = 39.977$;
 $\rho = 1000$ kg/m³
Ambient Temperature : 23.8 °C; Liquid Temperature : 22.9 °C

DASY5 Configuration:

- Probe: EX3DV4 - SN7577; ConvF(7.66, 7.66, 7.66); Calibrated: 2020.09.30
- Sensor-Surface: 1.4mm (Mechanical Surface Detection)
- Electronics: DAE4 Sn715; Calibrated: 2020.07.27
- Phantom: Twin-SAM1(P1aP2a20); Type: QD 000 P40 CD; Serial: TP:1670
- Measurement SW: DASY52, Version 52.10 (3); SEMCAD X Version 14.6.13 (7474)

Ch21350/Area Scan (81x91x1): Interpolated grid: dx=1.200 mm, dy=1.200 mm
Maximum value of SAR (interpolated) = 0.144 W/kg

Ch21350/Zoom Scan (7x7x7)/Cube 0: Measurement grid: dx=5mm, dy=5mm, dz=5mm
Reference Value = 1.692 V/m; Power Drift = 0.12 dB
Peak SAR (extrapolated) = 0.172 W/kg
SAR(1 g) = 0.087 W/kg; SAR(10 g) = 0.047 W/kg
Maximum value of SAR (measured) = 0.136 W/kg



0 dB = 0.136 W/kg

10_WLAN2.4GHz_802.11b 1Mbps_Left Cheek_Ch11

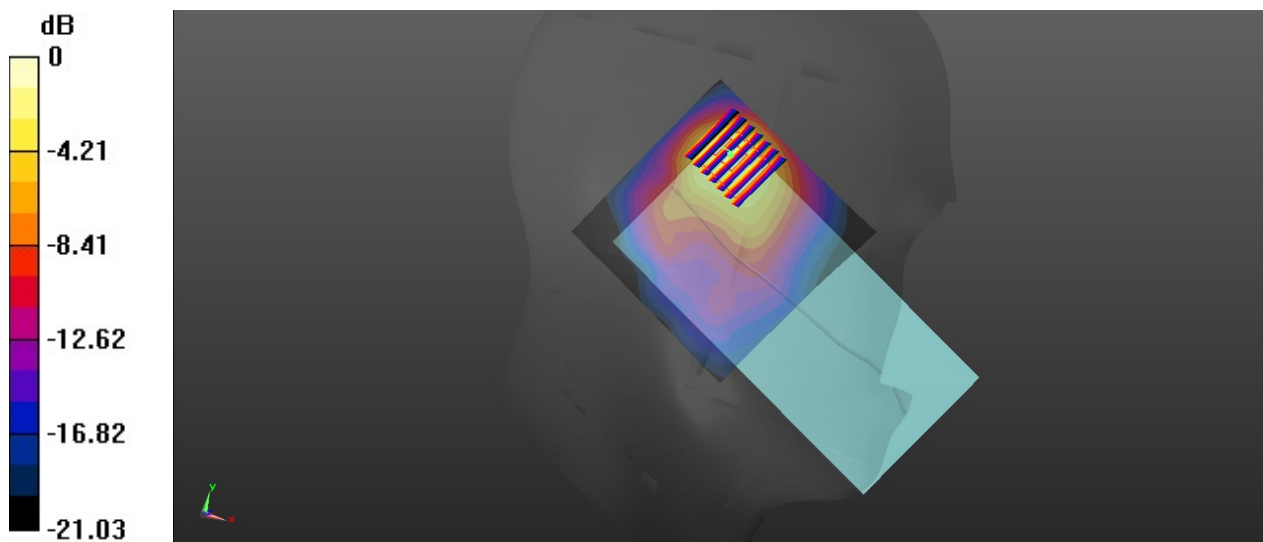
Communication System: UID 0, WIFI (0); Frequency: 2462 MHz; Duty Cycle: 1:1.014
Medium: HSL_2450_210221 Medium parameters used: $f = 2462$ MHz; $\sigma = 1.833$ S/m; $\epsilon_r = 39.712$;
 $\rho = 1000$ kg/m³
Ambient Temperature : 23.5 °C; Liquid Temperature : 22.6 °C

DASY5 Configuration:

- Probe: EX3DV4 - SN7577; ConvF(7.95, 7.95, 7.95); Calibrated: 2020.09.30
- Sensor-Surface: 1.4mm (Mechanical Surface Detection)
- Electronics: DAE4 Sn715; Calibrated: 2020.07.27
- Phantom: Twin-SAM1(P1aP2a20); Type: QD 000 P40 CD; Serial: TP:1670
- Measurement SW: DASY52, Version 52.10 (3); SEMCAD X Version 14.6.13 (7474)

Ch11/Area Scan (81x81x1): Interpolated grid: dx=1.200 mm, dy=1.200 mm
Maximum value of SAR (interpolated) = 1.64 W/kg

Ch11/Zoom Scan (7x7x7)/Cube 0: Measurement grid: dx=5mm, dy=5mm, dz=5mm
Reference Value = 13.59 V/m; Power Drift = -0.09 dB
Peak SAR (extrapolated) = 1.93 W/kg
SAR(1 g) = 0.852 W/kg; SAR(10 g) = 0.421 W/kg
Maximum value of SAR (measured) = 1.44 W/kg



0 dB = 1.64 W/kg

11_WLAN5GHz_802.11a 6Mbps_Left Tilted_Ch60

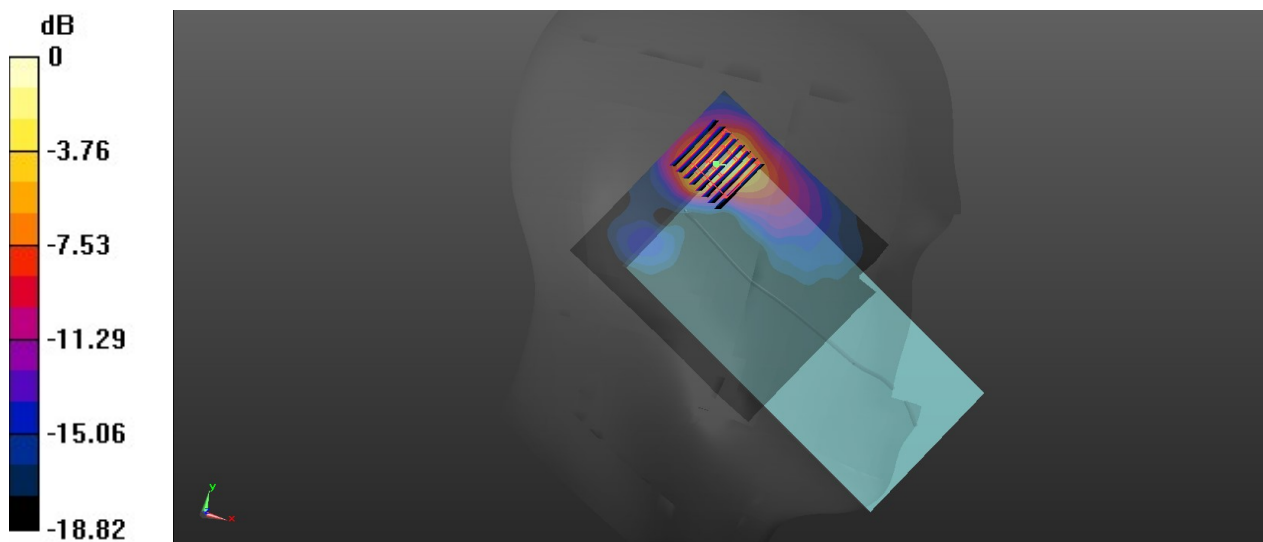
Communication System: UID 0, WIFI (0); Frequency: 5300 MHz; Duty Cycle: 1:1.097
Medium: HSL_5250_210226 Medium parameters used: $f = 5300$ MHz; $\sigma = 4.829$ S/m; $\epsilon_r = 36.892$;
 $\rho = 1000$ kg/m³
Ambient Temperature : 23.8 °C; Liquid Temperature : 22.6 °C

DASY5 Configuration:

- Probe: EX3DV4 - SN7577; ConvF(5.4, 5.4, 5.4); Calibrated: 2020.09.30
- Sensor-Surface: 1.4mm (Mechanical Surface Detection)
- Electronics: DAE4 Sn715; Calibrated: 2020.07.27
- Phantom: Twin-SAM1(P1aP2a20); Type: QD 000 P40 CD; Serial: TP:1670
- Measurement SW: DASY52, Version 52.10 (3); SEMCAD X Version 14.6.13 (7474)

Ch60/Area Scan (101x111x1): Interpolated grid: dx=1.000 mm, dy=1.000 mm
Maximum value of SAR (interpolated) = 1.37 W/kg

Ch60/Zoom Scan (8x8x7)/Cube 0: Measurement grid: dx=4mm, dy=4mm, dz=1.4mm
Reference Value = 2.982 V/m; Power Drift = 0.03 dB
Peak SAR (extrapolated) = 2.29 W/kg
SAR(1 g) = 0.562 W/kg; SAR(10 g) = 0.194 W/kg
Maximum value of SAR (measured) = 1.35 W/kg



0 dB = 1.37 W/kg

12_WLAN5GHz_802.11a 6Mbps_Left Tilted_Ch100

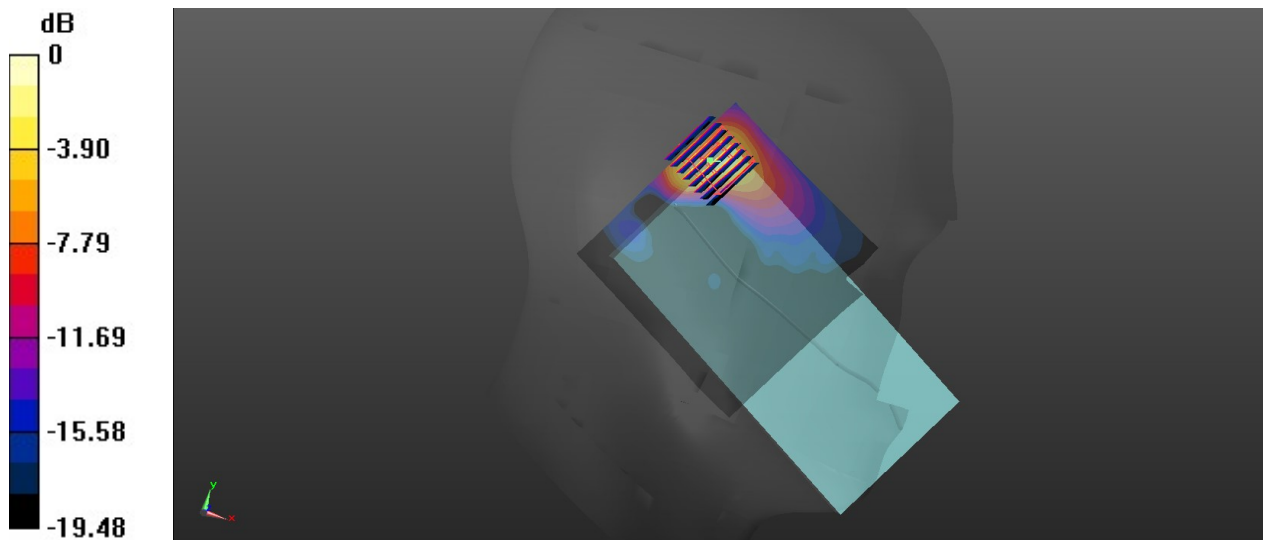
Communication System: UID 0, WIFI (0); Frequency: 5500 MHz; Duty Cycle: 1:1.097
Medium: HSL_5600_210227 Medium parameters used: $f = 5500$ MHz; $\sigma = 5.086$ S/m; $\epsilon_r = 36.467$;
 $\rho = 1000$ kg/m³
Ambient Temperature : 23.8 °C; Liquid Temperature : 22.5 °C

DASY5 Configuration:

- Probe: EX3DV4 - SN7577; ConvF(4.79, 4.79, 4.79); Calibrated: 2020.09.30
- Sensor-Surface: 1.4mm (Mechanical Surface Detection)
- Electronics: DAE4 Sn715; Calibrated: 2020.07.27
- Phantom: Twin-SAM1(P1aP2a20); Type: QD 000 P40 CD; Serial: TP:1670
- Measurement SW: DASY52, Version 52.10 (3); SEMCAD X Version 14.6.13 (7474)

Ch100/Area Scan (101x101x1): Interpolated grid: dx=1.000 mm, dy=1.000 mm
Maximum value of SAR (interpolated) = 1.32 W/kg

Ch100/Zoom Scan (8x8x7)/Cube 0: Measurement grid: dx=4mm, dy=4mm, dz=1.4mm
Reference Value = 3.941 V/m; Power Drift = 0.03 dB
Peak SAR (extrapolated) = 2.37 W/kg
SAR(1 g) = 0.559 W/kg; SAR(10 g) = 0.193 W/kg
Maximum value of SAR (measured) = 1.35 W/kg



0 dB = 1.32 W/kg

13_WLAN5GHz_802.11a 6Mbps_Left Tilted_Ch165

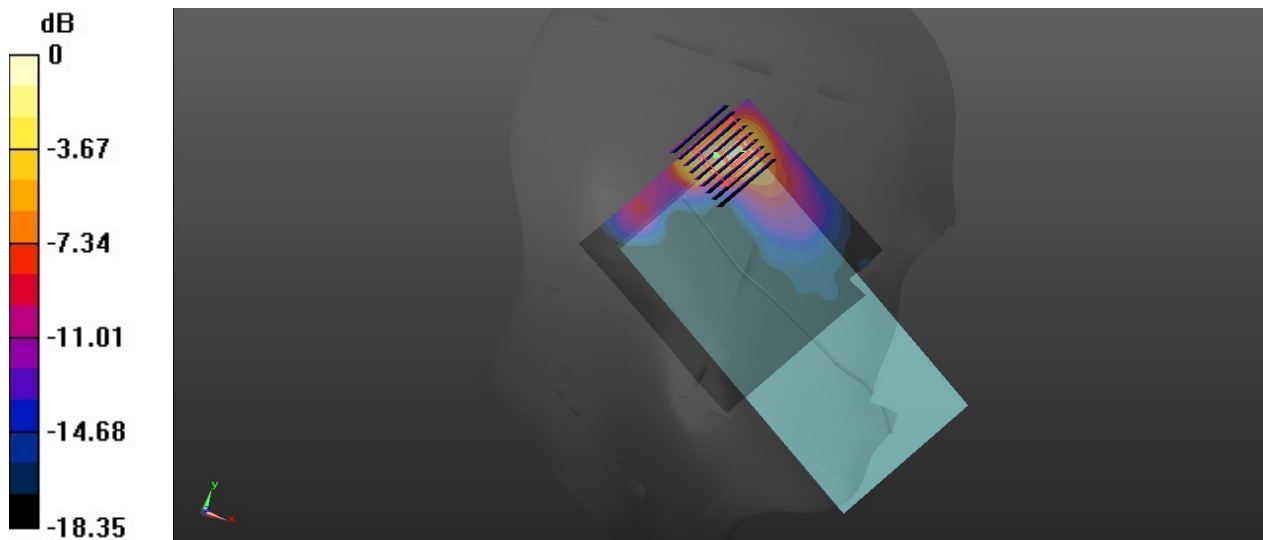
Communication System: UID 0, WIFI (0); Frequency: 5825 MHz; Duty Cycle: 1:1.097
Medium: HSL_5750_210228 Medium parameters used: $f = 5825$ MHz; $\sigma = 5.492$ S/m; $\epsilon_r = 35.745$;
 $\rho = 1000$ kg/m³
Ambient Temperature : 23.7 °C; Liquid Temperature : 22.7 °C

DASY5 Configuration:

- Probe: EX3DV4 - SN7577; ConvF(5.02, 5.02, 5.02); Calibrated: 2020.09.30
- Sensor-Surface: 1.4mm (Mechanical Surface Detection)
- Electronics: DAE4 Sn715; Calibrated: 2020.07.27
- Phantom: Twin-SAM1(P1aP2a20); Type: QD 000 P40 CD; Serial: TP:1670
- Measurement SW: DASY52, Version 52.10 (3); SEMCAD X Version 14.6.13 (7474)

Ch165/Area Scan (101x101x1): Interpolated grid: dx=1.000 mm, dy=1.000 mm
Maximum value of SAR (interpolated) = 1.47 W/kg

Ch165/Zoom Scan (9x9x7)/Cube 0: Measurement grid: dx=4mm, dy=4mm, dz=1.4mm
Reference Value = 3.287 V/m; Power Drift = 0.02 dB
Peak SAR (extrapolated) = 2.77 W/kg
SAR(1 g) = 0.590 W/kg; SAR(10 g) = 0.211 W/kg
Maximum value of SAR (measured) = 1.44 W/kg



0 dB = 1.47 W/kg

14_Bluetooth_DH5 1Mbps_Left Cheek_Ch39

Communication System: UID 0, Bluetooth (0); Frequency: 2441 MHz; Duty Cycle: 1:1.287
Medium: HSL_2450_210221 Medium parameters used: $f = 2441$ MHz; $\sigma = 1.81$ S/m; $\epsilon_r = 39.784$; $\rho = 1000$ kg/m³

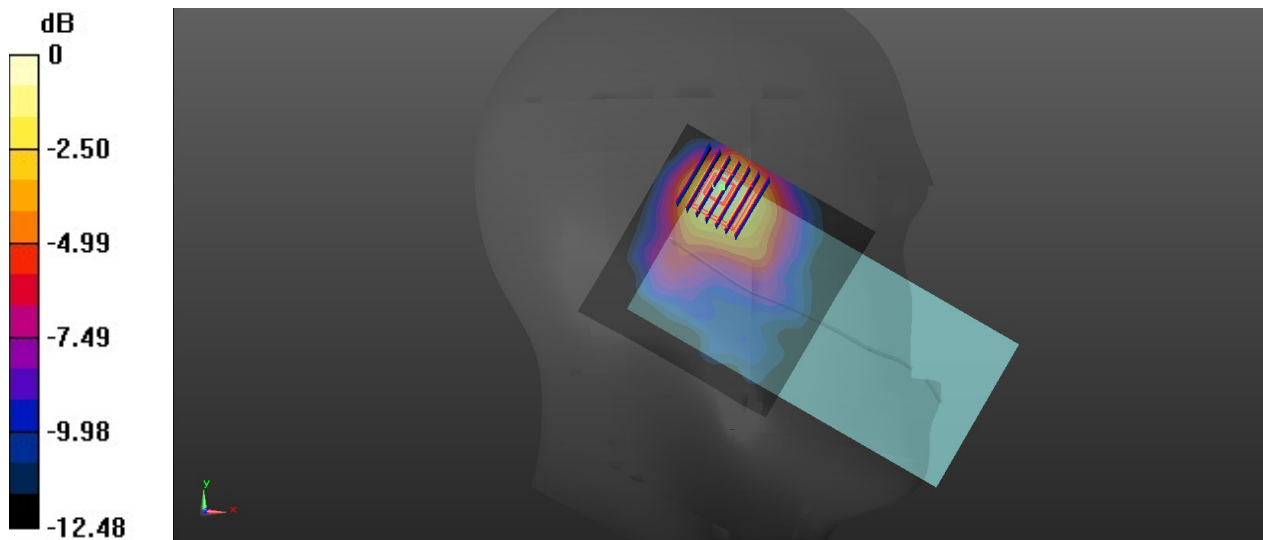
Ambient Temperature : 23.5 °C; Liquid Temperature : 22.6 °C

DASY5 Configuration:

- Probe: EX3DV4 - SN7577; ConvF(7.95, 7.95, 7.95); Calibrated: 2020.09.30
- Sensor-Surface: 1.4mm (Mechanical Surface Detection)
- Electronics: DAE4 Sn715; Calibrated: 2020.07.27
- Phantom: Twin-SAM1(P1aP2a20); Type: QD 000 P40 CD; Serial: TP:1670
- Measurement SW: DASY52, Version 52.10 (3); SEMCAD X Version 14.6.13 (7474)

Ch39/Area Scan (81x81x1): Interpolated grid: dx=1.200 mm, dy=1.200 mm
Maximum value of SAR (interpolated) = 0.109 W/kg

Ch39/Zoom Scan (7x7x7)/Cube 0: Measurement grid: dx=5mm, dy=5mm, dz=5mm
Reference Value = 3.886 V/m; Power Drift = 0.12 dB
Peak SAR (extrapolated) = 0.126 W/kg
SAR(1 g) = 0.057 W/kg; SAR(10 g) = 0.031 W/kg
Maximum value of SAR (measured) = 0.0935 W/kg



0 dB = 0.0935 W/kg

15_GSM850_GPRS(2 Tx slots)_Back_5mm_Ch189

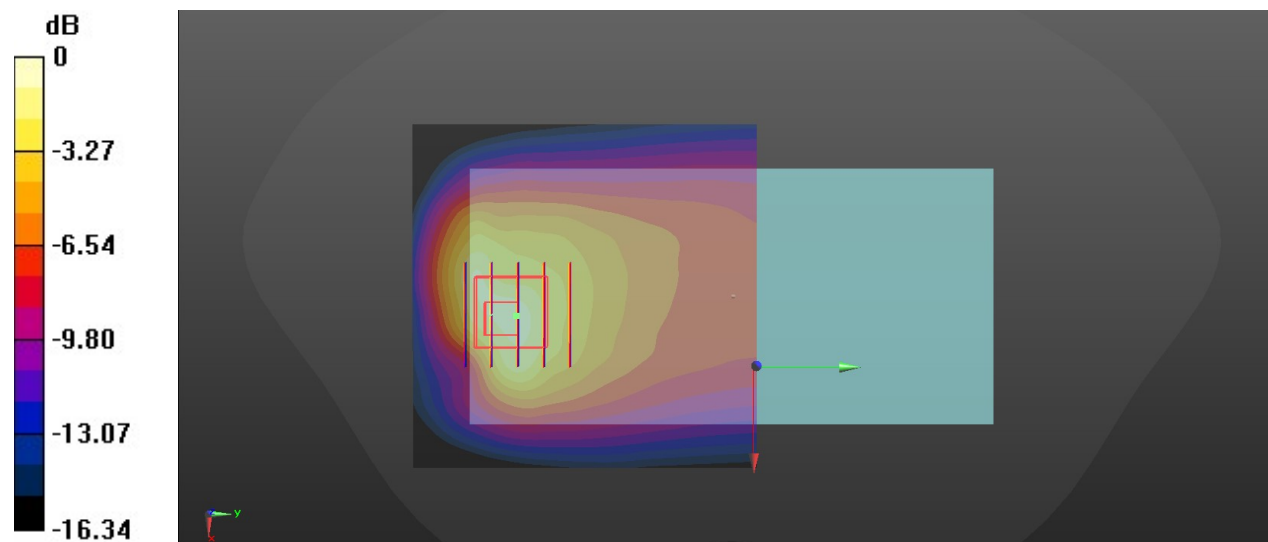
Communication System: UID 0, GPRS/EDGE10 (0); Frequency: 836.4 MHz; Duty Cycle: 1:4.15
Medium: HSL_835_210301 Medium parameters used: $f = 836.4$ MHz; $\sigma = 0.888$ S/m; $\epsilon_r = 41.979$;
 $\rho = 1000$ kg/m³
Ambient Temperature : 23.5 °C; Liquid Temperature : 22.7 °C

DASY5 Configuration:

- Probe: EX3DV4 - SN7577; ConvF(9.54, 9.54, 9.54); Calibrated: 2020.09.30
- Sensor-Surface: 1.4mm (Mechanical Surface Detection)
- Electronics: DAE4 Sn715; Calibrated: 2020.07.27
- Phantom: Twin-SAM1(P1aP2a20); Type: QD 000 P40 CD; Serial: TP:1670
- Measurement SW: DASY52, Version 52.10 (3); SEMCAD X Version 14.6.13 (7474)

Ch189/Area Scan (71x71x1): Interpolated grid: dx=1.500 mm, dy=1.500 mm
Maximum value of SAR (interpolated) = 1.95 W/kg

Ch189/Zoom Scan (5x5x7)/Cube 0: Measurement grid: dx=8mm, dy=8mm, dz=5mm
Reference Value = 21.94 V/m; Power Drift = 0.04 dB
Peak SAR (extrapolated) = 2.75 W/kg
SAR(1 g) = 1.15 W/kg; SAR(10 g) = 0.632 W/kg
Maximum value of SAR (measured) = 2.07 W/kg



0 dB = 1.95 W/kg

16_GSM1900_GPRS(2 Tx slots)_Back_5mm_Ch661

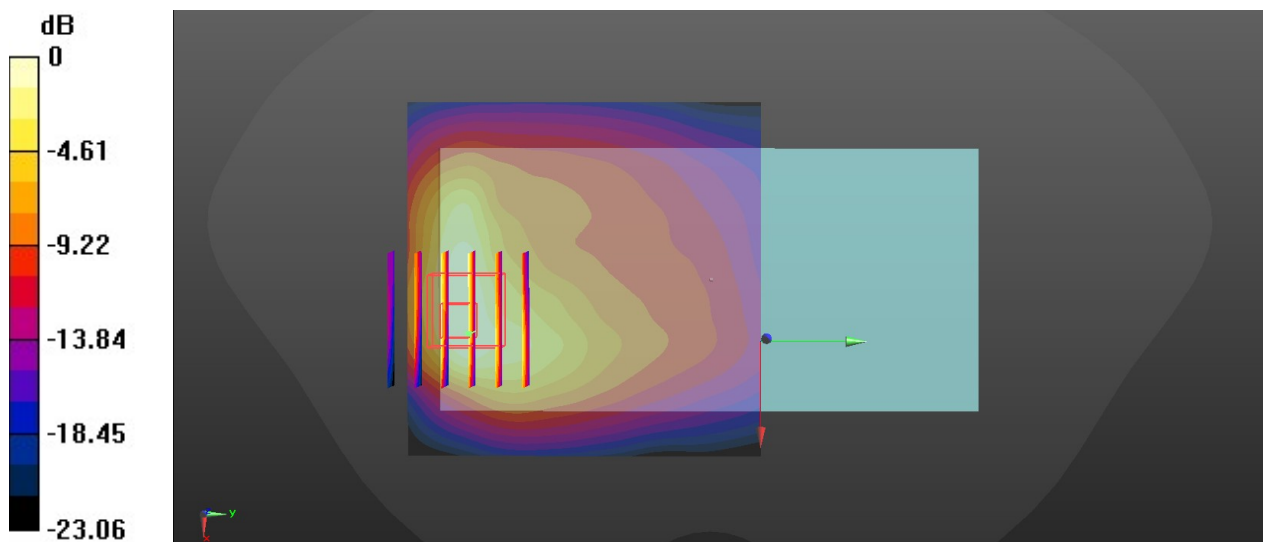
Communication System: UID 0, GPRS/EDGE10 (0); Frequency: 1880 MHz; Duty Cycle: 1:4.15
Medium: HSL_1900_210303 Medium parameters used: $f = 1880$ MHz; $\sigma = 1.401$ S/m; $\epsilon_r = 41.376$;
 $\rho = 1000$ kg/m³
Ambient Temperature : 23.7 °C; Liquid Temperature : 22.5 °C

DASY5 Configuration:

- Probe: EX3DV4 - SN7577; ConvF(8.34, 8.34, 8.34); Calibrated: 2020.09.30
- Sensor-Surface: 1.4mm (Mechanical Surface Detection)
- Electronics: DAE4 Sn715; Calibrated: 2020.07.27
- Phantom: Twin-SAM1(P1aP2a20); Type: QD 000 P40 CD; Serial: TP:1670
- Measurement SW: DASY52, Version 52.10 (3); SEMCAD X Version 14.6.13 (7474)

Ch661/Area Scan (71x71x1): Interpolated grid: dx=1.500 mm, dy=1.500 mm
Maximum value of SAR (interpolated) = 1.62 W/kg

Ch661/Zoom Scan (6x6x7)/Cube 0: Measurement grid: dx=8mm, dy=8mm, dz=5mm
Reference Value = 7.522 V/m; Power Drift = -0.02 dB
Peak SAR (extrapolated) = 1.86 W/kg
SAR(1 g) = 0.926 W/kg; SAR(10 g) = 0.483 W/kg
Maximum value of SAR (measured) = 1.45 W/kg



0 dB = 1.45 W/kg

17_WCDMA V_RMC 12.2Kbps_Back_5mm_Ch4233

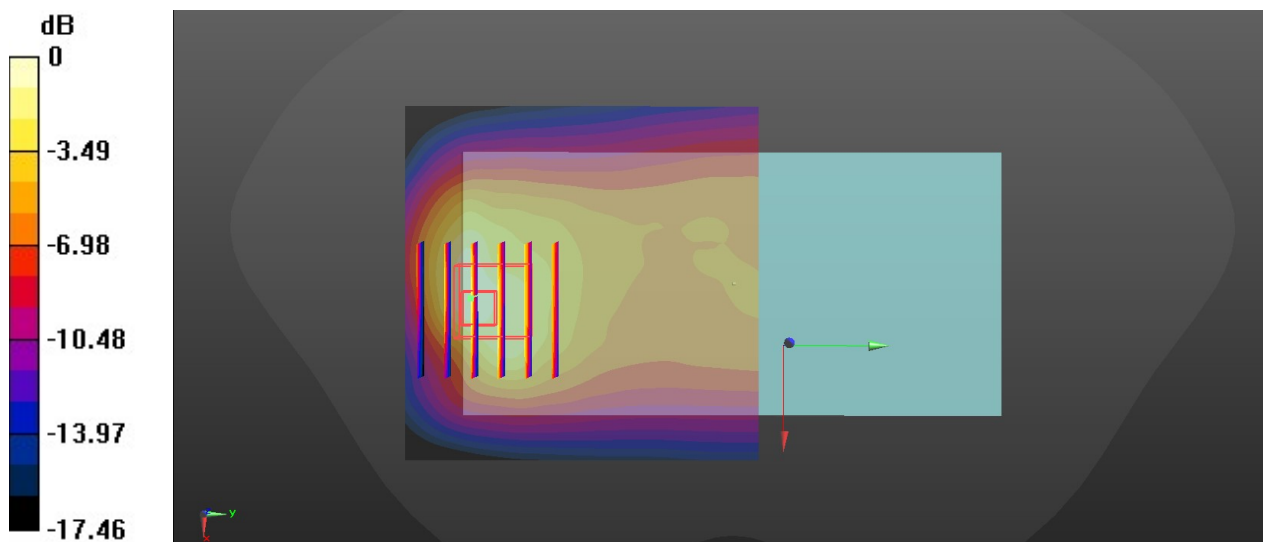
Communication System: UID 0, UMTS (0); Frequency: 846.6 MHz; Duty Cycle: 1:1
Medium: HSL_835_210301 Medium parameters used: $f = 847$ MHz; $\sigma = 0.884$ S/m; $\epsilon_r = 41.652$;
 $\rho = 1000$ kg/m³
Ambient Temperature : 23.5 °C; Liquid Temperature : 22.7 °C

DASY5 Configuration:

- Probe: EX3DV4 - SN7577; ConvF(9.54, 9.54, 9.54); Calibrated: 2020.09.30
- Sensor-Surface: 1.4mm (Mechanical Surface Detection)
- Electronics: DAE4 Sn715; Calibrated: 2020.07.27
- Phantom: Twin-SAM1(P1aP2a20); Type: QD 000 P40 CD; Serial: TP:1670
- Measurement SW: DASY52, Version 52.10 (3); SEMCAD X Version 14.6.13 (7474)

Ch4233/Area Scan (71x71x1): Interpolated grid: dx=1.500 mm, dy=1.500 mm
Maximum value of SAR (interpolated) = 1.58 W/kg

Ch4233/Zoom Scan (6x6x7)/Cube 0: Measurement grid: dx=8mm, dy=8mm, dz=5mm
Reference Value = 21.87 V/m; Power Drift = 0.04 dB
Peak SAR (extrapolated) = 2.57 W/kg
SAR(1 g) = 1.07 W/kg; SAR(10 g) = 0.566 W/kg
Maximum value of SAR (measured) = 1.93 W/kg



0 dB = 1.58 W/kg

18_WCDMA IV_RMC 12.2Kbps_Back_5mm_Ch1413

Communication System: UID 0, UMTS (0); Frequency: 1732.6 MHz; Duty Cycle: 1:1
Medium: HSL_1750_210307 Medium parameters used: $f = 1733 \text{ MHz}$; $\sigma = 1.355 \text{ S/m}$; $\epsilon_r = 39.99$; $\rho = 1000 \text{ kg/m}^3$

Ambient Temperature : 23.6 °C; Liquid Temperature : 22.8 °C

DASY5 Configuration:

- Probe: EX3DV4 - SN7577; ConvF(8.62, 8.62, 8.62); Calibrated: 2020.09.30
- Sensor-Surface: 1.4mm (Mechanical Surface Detection)
- Electronics: DAE4 Sn715; Calibrated: 2020.07.27
- Phantom: Twin-SAM1(P1aP2a20); Type: QD 000 P40 CD; Serial: TP:1670
- Measurement SW: DASY52, Version 52.10 (3); SEMCAD X Version 14.6.13 (7474)

Ch1413/Area Scan (71x71x1): Interpolated grid: $dx=1.500 \text{ mm}$, $dy=1.500 \text{ mm}$

Maximum value of SAR (interpolated) = 1.80 W/kg

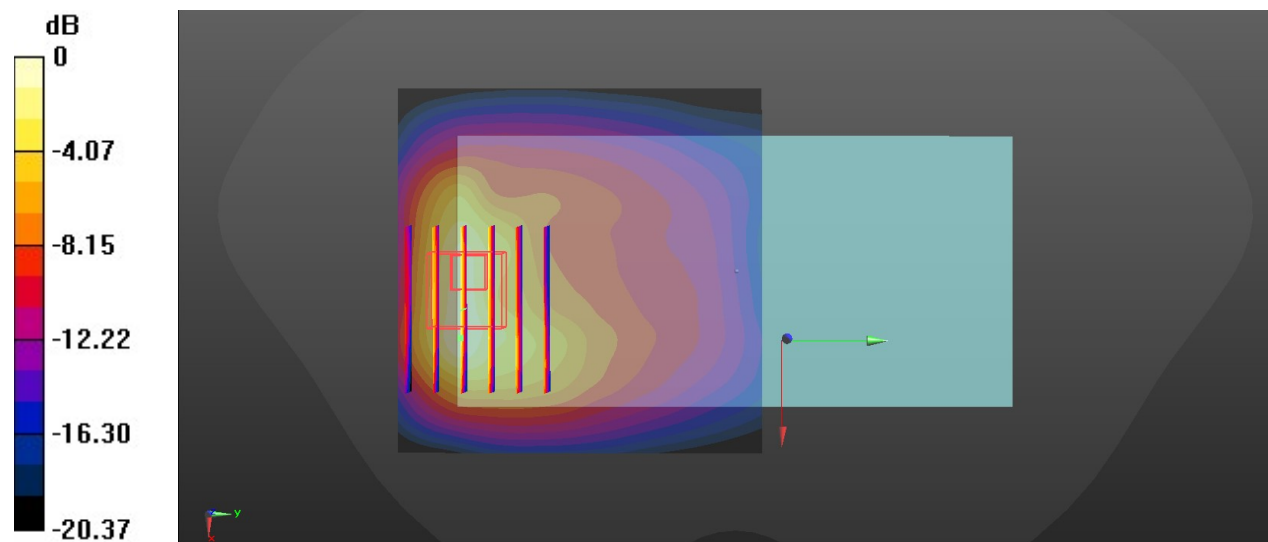
Ch1413/Zoom Scan (7x6x7)/Cube 0: Measurement grid: $dx=8\text{mm}$, $dy=8\text{mm}$, $dz=5\text{mm}$

Reference Value = 8.226 V/m; Power Drift = 0.03 dB

Peak SAR (extrapolated) = 2.10 W/kg

SAR(1 g) = 1.15 W/kg; SAR(10 g) = 0.615 W/kg

Maximum value of SAR (measured) = 1.67 W/kg



0 dB = 1.80 W/kg

19_WCDMA II_RMC 12.2Kbps_Bottom Side_5mm_Ch9400

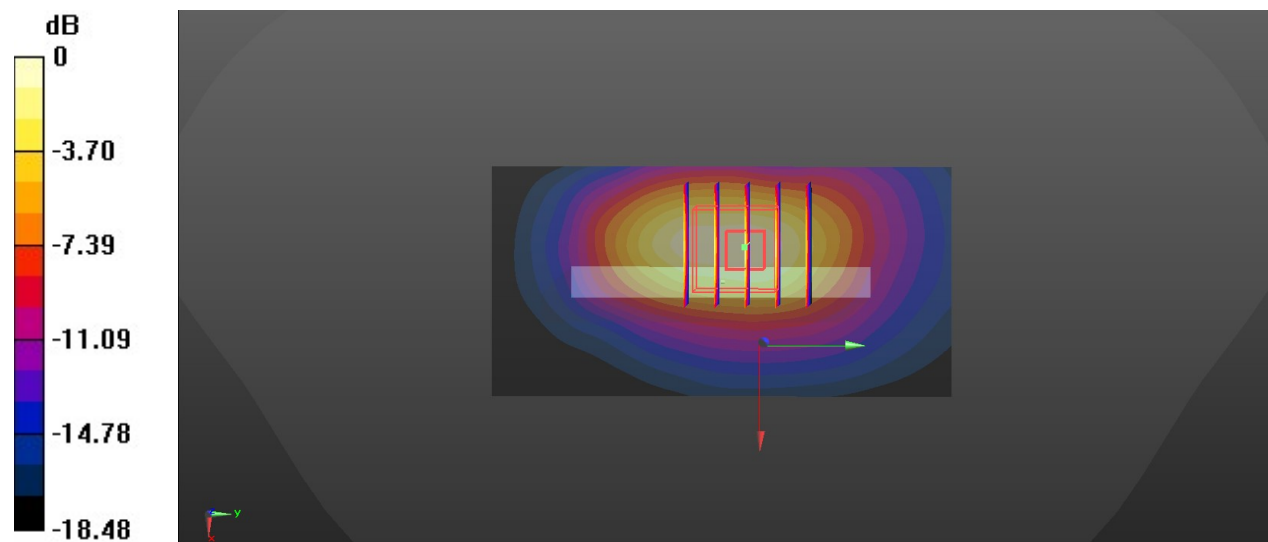
Communication System: UID 0, UMTS (0); Frequency: 1880 MHz; Duty Cycle: 1:1
Medium: HSL_1900_210303 Medium parameters used: $f = 1880$ MHz; $\sigma = 1.408$ S/m; $\epsilon_r = 41.203$;
 $\rho = 1000$ kg/m³
Ambient Temperature : 23.7 °C; Liquid Temperature : 22.5 °C

DASY5 Configuration:

- Probe: EX3DV4 - SN7577; ConvF(8.34, 8.34, 8.34); Calibrated: 2020.09.30
- Sensor-Surface: 1.4mm (Mechanical Surface Detection)
- Electronics: DAE4 Sn715; Calibrated: 2020.07.27
- Phantom: Twin-SAM1(P1aP2a20); Type: QD 000 P40 CD; Serial: TP:1670
- Measurement SW: DASY52, Version 52.10 (3); SEMCAD X Version 14.6.13 (7474)

Ch9400/Area Scan (41x81x1): Interpolated grid: dx=1.500 mm, dy=1.500 mm
Maximum value of SAR (interpolated) = 1.61 W/kg

Ch9400/Zoom Scan (5x5x7)/Cube 0: Measurement grid: dx=8mm, dy=8mm, dz=5mm
Reference Value = 23.99 V/m; Power Drift = 0.04 dB
Peak SAR (extrapolated) = 2.24 W/kg
SAR(1 g) = 1.12 W/kg; SAR(10 g) = 0.562 W/kg
Maximum value of SAR (measured) = 1.85 W/kg



0 dB = 1.61 W/kg

20_LTE Band 5_10M_QPSK_1RB_49Offset_Back_5mm_Ch20525

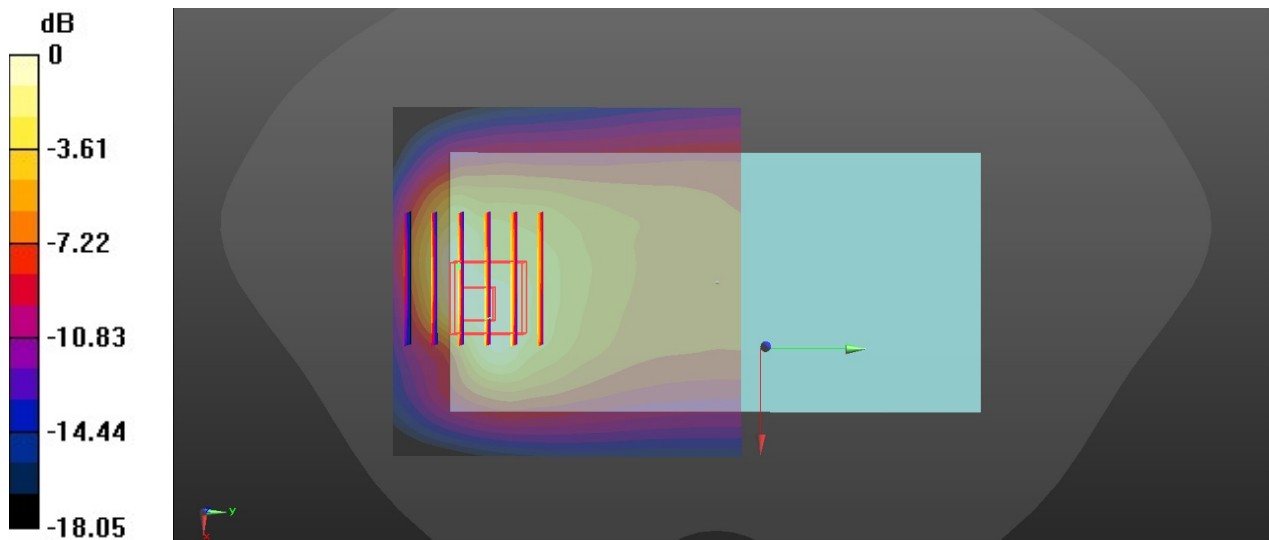
Communication System: UID 0, LTE (0); Frequency: 836.5 MHz; Duty Cycle: 1:1
 Medium: HSL_835_210301 Medium parameters used: $f = 836.5$ MHz; $\sigma = 0.888$ S/m; $\epsilon_r = 41.978$;
 $\rho = 1000$ kg/m³
 Ambient Temperature : 23.5 °C; Liquid Temperature : 22.7 °C

DASY5 Configuration:

- Probe: EX3DV4 - SN7577; ConvF(9.54, 9.54, 9.54); Calibrated: 2020.09.30
- Sensor-Surface: 1.4mm (Mechanical Surface Detection)
- Electronics: DAE4 Sn715; Calibrated: 2020.07.27
- Phantom: Twin-SAM1(P1aP2a20); Type: QD 000 P40 CD; Serial: TP:1670
- Measurement SW: DASY52, Version 52.10 (3); SEMCAD X Version 14.6.13 (7474)

Ch20525/Area Scan (71x71x1): Interpolated grid: dx=1.500 mm, dy=1.500 mm
 Maximum value of SAR (interpolated) = 1.68 W/kg

Ch20525/Zoom Scan (6x6x7)/Cube 0: Measurement grid: dx=8mm, dy=8mm, dz=5mm
 Reference Value = 2.566 V/m; Power Drift = -0.14 dB
 Peak SAR (extrapolated) = 2.09 W/kg
SAR(1 g) = 1.06 W/kg; SAR(10 g) = 0.581 W/kg
 Maximum value of SAR (measured) = 1.66 W/kg



0 dB = 1.66 W/kg

21_LTE Band 66_20M_QPSK_1RB_0Offset_Bottom Side_5mm_Ch132572

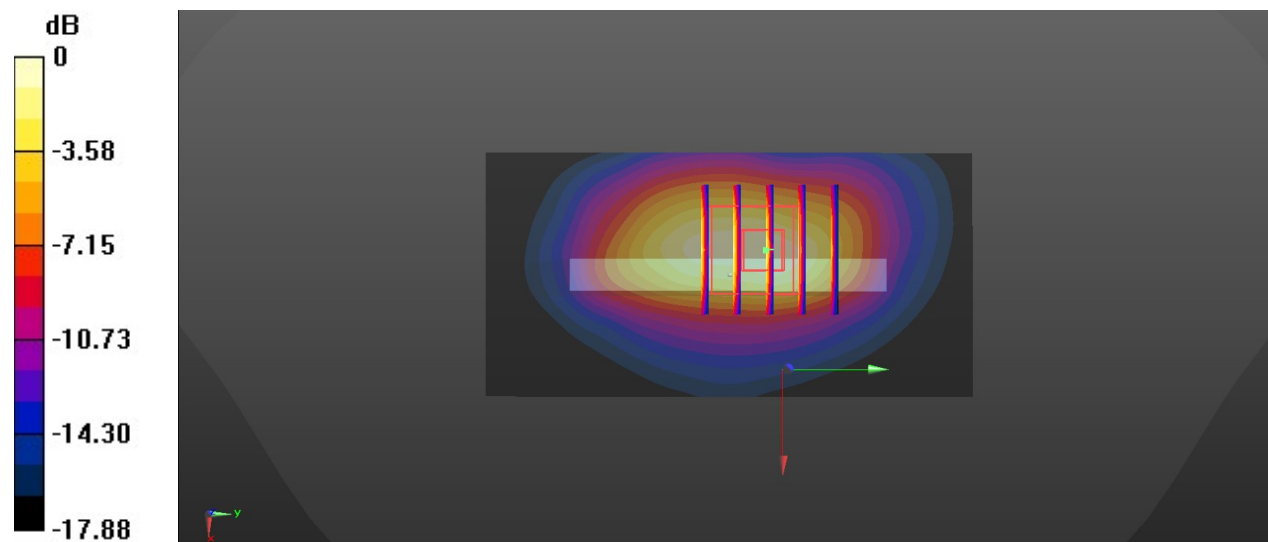
Communication System: UID 0, LTE (0); Frequency: 1770 MHz; Duty Cycle: 1:1
Medium: HSL_1750_210307 Medium parameters used: $f = 1770$ MHz; $\sigma = 1.393$ S/m; $\epsilon_r = 39.874$;
 $\rho = 1000$ kg/m³
Ambient Temperature : 23.6 °C; Liquid Temperature : 22.8 °C

DASY5 Configuration:

- Probe: EX3DV4 - SN7577; ConvF(8.62, 8.62, 8.62); Calibrated: 2020.09.30
- Sensor-Surface: 1.4mm (Mechanical Surface Detection)
- Electronics: DAE4 Sn715; Calibrated: 2020.07.27
- Phantom: Twin-SAM1(P1aP2a20); Type: QD 000 P40 CD; Serial: TP:1670
- Measurement SW: DASY52, Version 52.10 (3); SEMCAD X Version 14.6.13 (7474)

Ch132572/Area Scan (41x81x1): Interpolated grid: dx=1.500 mm, dy=1.500 mm
Maximum value of SAR (interpolated) = 1.62 W/kg

Ch132572/Zoom Scan (5x5x7)/Cube 0: Measurement grid: dx=8mm, dy=8mm, dz=5mm
Reference Value = 9.952 V/m; Power Drift = -0.06 dB
Peak SAR (extrapolated) = 2.08 W/kg
SAR(1 g) = 1.08 W/kg; SAR(10 g) = 0.549 W/kg
Maximum value of SAR (measured) = 1.76 W/kg



0 dB = 1.62 W/kg

22_LTE Band 2_20M_QPSK_1RB_0Offset_Back_5mm_Ch18700

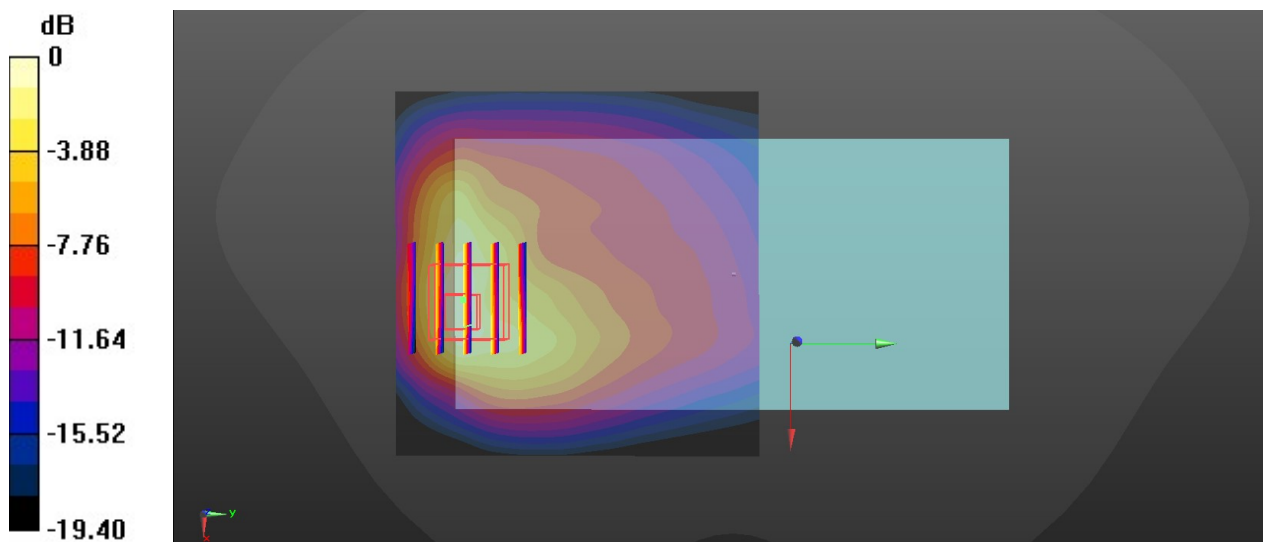
Communication System: UID 0, LTE -FDD (0); Frequency: 1860 MHz; Duty Cycle: 1:1
Medium: HSL_1900_210303 Medium parameters used: $f = 1860$ MHz; $\sigma = 1.387$ S/m; $\epsilon_r = 41.277$;
 $\rho = 1000$ kg/m³
Ambient Temperature : 23.7 °C; Liquid Temperature : 22.5 °C

DASY5 Configuration:

- Probe: EX3DV4 - SN7577; ConvF(8.34, 8.34, 8.34); Calibrated: 2020.09.30
- Sensor-Surface: 1.4mm (Mechanical Surface Detection)
- Electronics: DAE4 Sn715; Calibrated: 2020.07.27
- Phantom: Twin-SAM1(P1aP2a20); Type: QD 000 P40 CD; Serial: TP:1670
- Measurement SW: DASY52, Version 52.10 (3); SEMCAD X Version 14.6.13 (7474)

Ch18700/Area Scan (71x71x1): Interpolated grid: dx=1.500 mm, dy=1.500 mm
Maximum value of SAR (interpolated) = 1.83 W/kg

Ch18700/Zoom Scan (5x5x7)/Cube 0: Measurement grid: dx=8mm, dy=8mm, dz=5mm
Reference Value = 10.33 V/m; Power Drift = -0.10 dB
Peak SAR (extrapolated) = 2.04 W/kg
SAR(1 g) = 1.05 W/kg; SAR(10 g) = 0.564 W/kg
Maximum value of SAR (measured) = 1.65 W/kg



0 dB = 1.83 W/kg

23_LTE Band 7_20M_QPSK_1RB_99Offset_Back_5mm_Ch21100

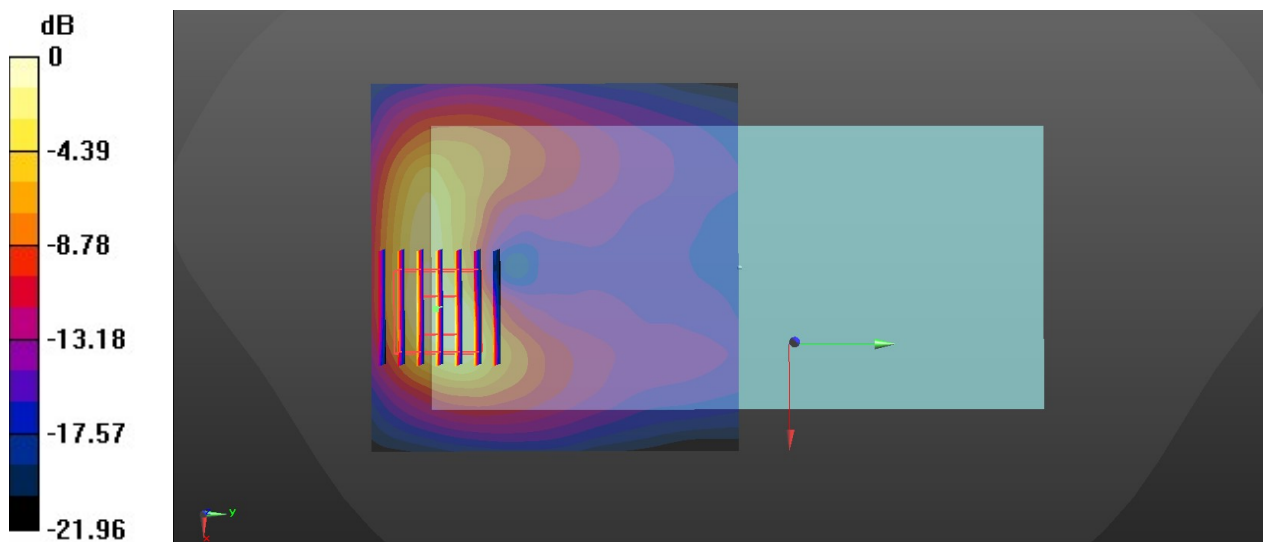
Communication System: UID 0, LTE (0); Frequency: 2535 MHz; Duty Cycle: 1:1
Medium: HSL_2600_210305 Medium parameters used: $f = 2535$ MHz; $\sigma = 1.849$ S/m; $\epsilon_r = 40.069$;
 $\rho = 1000$ kg/m³
Ambient Temperature : 23.8 °C; Liquid Temperature : 22.9 °C

DASY5 Configuration:

- Probe: EX3DV4 - SN7577; ConvF(7.66, 7.66, 7.66); Calibrated: 2020.09.30
- Sensor-Surface: 1.4mm (Mechanical Surface Detection)
- Electronics: DAE4 Sn715; Calibrated: 2020.07.27
- Phantom: Twin-SAM1(P1aP2a20); Type: QD 000 P40 CD; Serial: TP:1670
- Measurement SW: DASY52, Version 52.10 (3); SEMCAD X Version 14.6.13 (7474)

Ch21100/Area Scan (81x81x1): Interpolated grid: dx=1.200 mm, dy=1.200 mm
Maximum value of SAR (interpolated) = 1.50 W/kg

Ch21100/Zoom Scan (7x7x7)/Cube 0: Measurement grid: dx=5mm, dy=5mm, dz=5mm
Reference Value = 4.352 V/m; Power Drift = 0.05 dB
Peak SAR (extrapolated) = 2.25 W/kg
SAR(1 g) = 0.918 W/kg; SAR(10 g) = 0.367 W/kg
Maximum value of SAR (measured) = 1.70 W/kg



0 dB = 1.50 W/kg

24_WLAN2.4GHz_802.11b 1Mbps_Back_5mm_Ch1

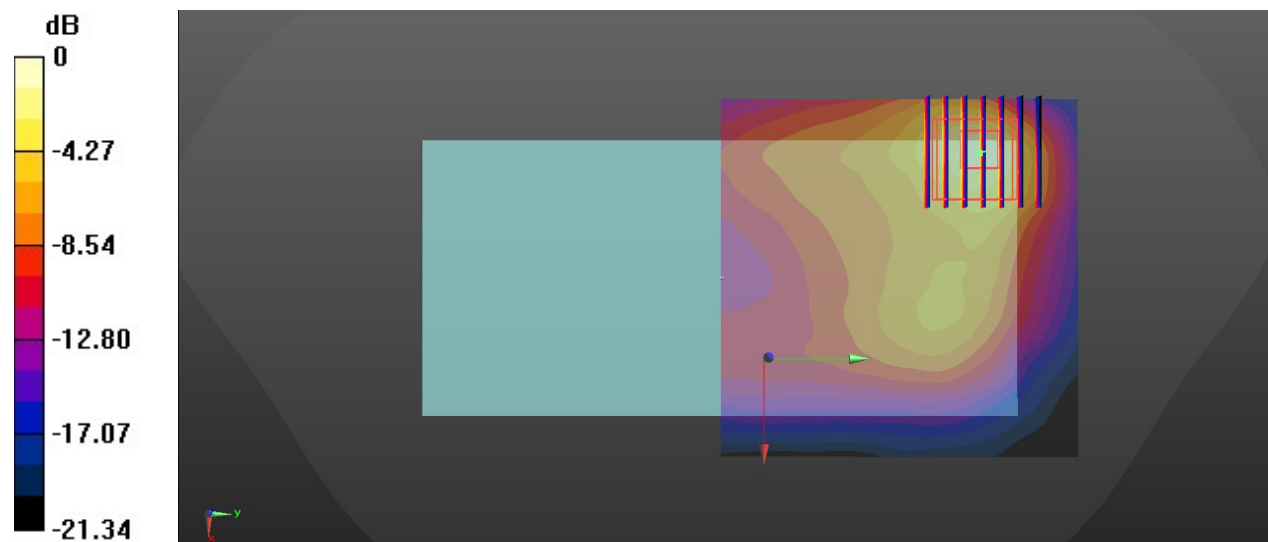
Communication System: UID 0, WIFI (0); Frequency: 2412 MHz; Duty Cycle: 1:1.014
Medium: HSL_2450_210221 Medium parameters used: $f = 2412$ MHz; $\sigma = 1.777$ S/m; $\epsilon_r = 39.891$;
 $\rho = 1000$ kg/m³
Ambient Temperature : 23.5 °C; Liquid Temperature : 22.6 °C

DASY5 Configuration:

- Probe: EX3DV4 - SN7577; ConvF(7.95, 7.95, 7.95); Calibrated: 2020.09.30
- Sensor-Surface: 1.4mm (Mechanical Surface Detection)
- Electronics: DAE4 Sn715; Calibrated: 2020.07.27
- Phantom: Twin-SAM1(P1aP2a20); Type: QD 000 P40 CD; Serial: TP:1670
- Measurement SW: DASY52, Version 52.10 (3); SEMCAD X Version 14.6.13 (7474)

Ch1/Area Scan (81x81x1): Interpolated grid: dx=1.200 mm, dy=1.200 mm
Maximum value of SAR (interpolated) = 1.35 W/kg

Ch1/Zoom Scan (7x7x7)/Cube 0: Measurement grid: dx=5mm, dy=5mm, dz=5mm
Reference Value = 6.912 V/m; Power Drift = 0.06 dB
Peak SAR (extrapolated) = 1.58 W/kg
SAR(1 g) = 0.636 W/kg; SAR(10 g) = 0.283 W/kg
Maximum value of SAR (measured) = 1.20 W/kg



0 dB = 1.35 W/kg

25_WLAN5GHz_802.11a 6Mbps_Top Side_5mm_Ch44

Communication System: UID 0, WIFI (0); Frequency: 5220 MHz; Duty Cycle: 1:1.097
Medium: HSL_5250_210226 Medium parameters used: $f = 5220$ MHz; $\sigma = 4.73$ S/m; $\epsilon_r = 37.059$; $\rho = 1000$ kg/m³
Ambient Temperature : 23.8 °C; Liquid Temperature : 22.6 °C

DASY5 Configuration:

- Probe: EX3DV4 - SN7577; ConvF(5.4, 5.4, 5.4); Calibrated: 2020.09.30
- Sensor-Surface: 1.4mm (Mechanical Surface Detection)
- Electronics: DAE4 Sn715; Calibrated: 2020.07.27
- Phantom: Twin-SAM1(P1aP2a20); Type: QD 000 P40 CD; Serial: TP:1670
- Measurement SW: DASY52, Version 52.10 (3); SEMCAD X Version 14.6.13 (7474)

Ch44/Area Scan (51x101x1): Interpolated grid: dx=1.000 mm, dy=1.000 mm
Maximum value of SAR (interpolated) = 1.50 W/kg

Ch44/Zoom Scan (9x9x7)/Cube 0: Measurement grid: dx=4mm, dy=4mm, dz=1.4mm
Reference Value = 2.854 V/m; Power Drift = 0.04 dB
Peak SAR (extrapolated) = 2.32 W/kg
SAR(1 g) = 0.575 W/kg; SAR(10 g) = 0.198 W/kg
Maximum value of SAR (measured) = 1.29 W/kg

