



# HEARING AID COMPATIBILITY RF EMISSIONS TEST REPORT

FCC ID : IHDT56ZP4  
Equipment : Mobile Cellular Phone  
Brand Name : Motorola  
Model Name : XT2165-1, XT2165-2  
M-Rating : M3  
Applicant : Motorola Mobility LLC  
222 W, Merchandise Mart Plaza, Chicago IL 60654 USA  
Manufacturer : Motorola Mobility LLC  
222 W, Merchandise Mart Plaza, Chicago IL 60654 USA  
Standard : FCC 47 CFR §20.19  
ANSI C63.19-2011

We, Sporton International (ShenZhen) Inc., would like to declare that the tested sample has been evaluated in accordance with the test procedures and has been in compliance with the applicable technical standards.

The test results in this report apply exclusively to the tested model / sample. Without written approval of Sporton International (ShenZhen) Inc., the test report shall not be reproduced except in full.

*Hank Huang*

Reviewed by: Hank Huang / Supervisor

*Johnny Chen*



Approved by: Johnny Chen / Manager

**Sporton International (ShenZhen) Inc.**

**1/F, 2/F, Bldg 5, Shiling Industrial Zone, Xinwei Village, Xili, Nanshan, Shenzhen, 518055  
People's Republic of China**



**Table of Contents**

1. General Information ..... 4  
2. Testing Location..... 5  
3. Applied Standards ..... 5  
4. RF Audio Interference Level..... 5  
5. Air Interface and Operating Mode..... 6  
6. Measurement System Specification ..... 7  
    6.1 E-Field Probe System..... 7  
    6.2 Data Storage and Evaluation..... 8  
7. RF Emissions Test Procedure..... 9  
8. Test Equipment List .....12  
9. Measurement System Validation .....13  
10. Modulation Interference Factor.....14  
11. Low-power Exemption.....15  
12. Conducted RF Output Power (Unit: dBm).....18  
13. HAC RF Emission Test Results.....19  
14. Uncertainty Assessment .....20  
15. References.....22

Appendix A. Plots of System Performance Check  
Appendix B. Plots of RF Emission Measurement  
Appendix C. DASYS Calibration Certificate  
Appendix D. Test Setup Photos



### History of this test report

Report No.	Version	Description	Issued Date
HA170628-01A	Rev. 01	Initial issue of report	Sep. 18, 2021



**1. General Information**

Product Feature & Specification	
Applicant Name	Motorola Mobility LLC
Equipment Name	Mobile Cellular Phone
Brand Name	Motorola
Model Name	XT2165-1, XT2165-2
IMEI Code	355570490007419
FCC ID	IHDT56ZP4
HW	DVT2
SW	RRQ31.Q3-51
EUT Stage	Identical Prototype
Date Tested	2021/08/28
Frequency Band	GSM850: 824 MHz ~ 849 MHz GSM1900: 1850 MHz ~ 1910 MHz WCDMA Band II: 1850 MHz ~ 1910 MHz WCDMA Band IV: 1710 MHz ~ 1755 MHz WCDMA Band V: 824 MHz ~ 849 MHz LTE Band 2: 1850 MHz ~ 1910 MHz LTE Band 4: 1710 MHz ~ 1755 MHz LTE Band 5: 824 MHz ~ 849 MHz LTE Band 12: 699 MHz ~ 716 MHz LTE Band 13: 777 MHz ~ 787 MHz LTE Band 14 : 788 MHz ~ 798 MHz LTE Band 30 : 2305 MHz ~ 2315 MHz LTE Band 66: 1710 MHz ~ 1780 MHz WLAN 2.4GHz Band: 2412 MHz ~ 2462 MHz WLAN 5.2GHz Band: 5180 MHz ~ 5240 MHz WLAN 5.3GHz Band: 5260 MHz ~ 5320 MHz WLAN 5.5GHz Band: 5500 MHz ~ 5700 MHz WLAN 5.8GHz Band: 5745 MHz ~ 5825 MHz Bluetooth: 2402 MHz ~ 2480 MHz
Mode	GSM/GPRS/EGPRS RMC/AMR 12.2Kbps HSDPA/HSUPA DC-HSDPA HSPA+ (16QAM uplink is supported) LTE: QPSK, 16QAM, 64QAM WLAN 2.4GHz 802.11b/g/n HT20/HT40 WLAN 5GHz 802.11a/n HT20/HT40 WLAN 5GHz 802.11ac VHT20/VHT40/VHT80 Bluetooth BR/EDR/LE



2. Testing Location

Sporton International (Shenzhen) Inc. is accredited to ISO/IEC 17025:2017 by American Association for Laboratory Accreditation with Certificate Number 5145.01.

Table with 4 columns: Test Firm, Test Site Location, Test Site No., and FCC Designation No. / FCC Test Firm Registration No.

3. Applied Standards

- FCC CFR47 Part 20.19
ANSI C63.19-2011
FCC KDB 285076 D01 HAC Guidance v05r01
FCC KDB 285076 D02 T Coil testing v03r01

4. RF Audio Interference Level

FCC wireless hearing aid compatibility rules ensure that consumers with hearing loss are able to access wireless communications services through a wide selection of handsets without experiencing disabling radio frequency (RF) interference or other technical obstacles.

To define and measure the hearing aid compatibility of handsets, in CFR47 part 20.19 ANSI C63.19 is referenced. A handset is considered hearing aid-compatible for acoustic coupling if it meets a rating of at least M3 under ANSI C63.19, and A handset is considered hearing aid compatible for inductive coupling if it meets a rating of at least T3. According to ANSI C63.19 2011 version, for acoustic coupling, the RF electric field emissions of wireless communication devices should be measured and rated according to the emission level as below.

Table 4.1 Telephone near-field categories in linear units. Columns: Emission Categories, E-field emissions (<960Mhz, >960Mhz). Rows: M1, M2, M3, M4.

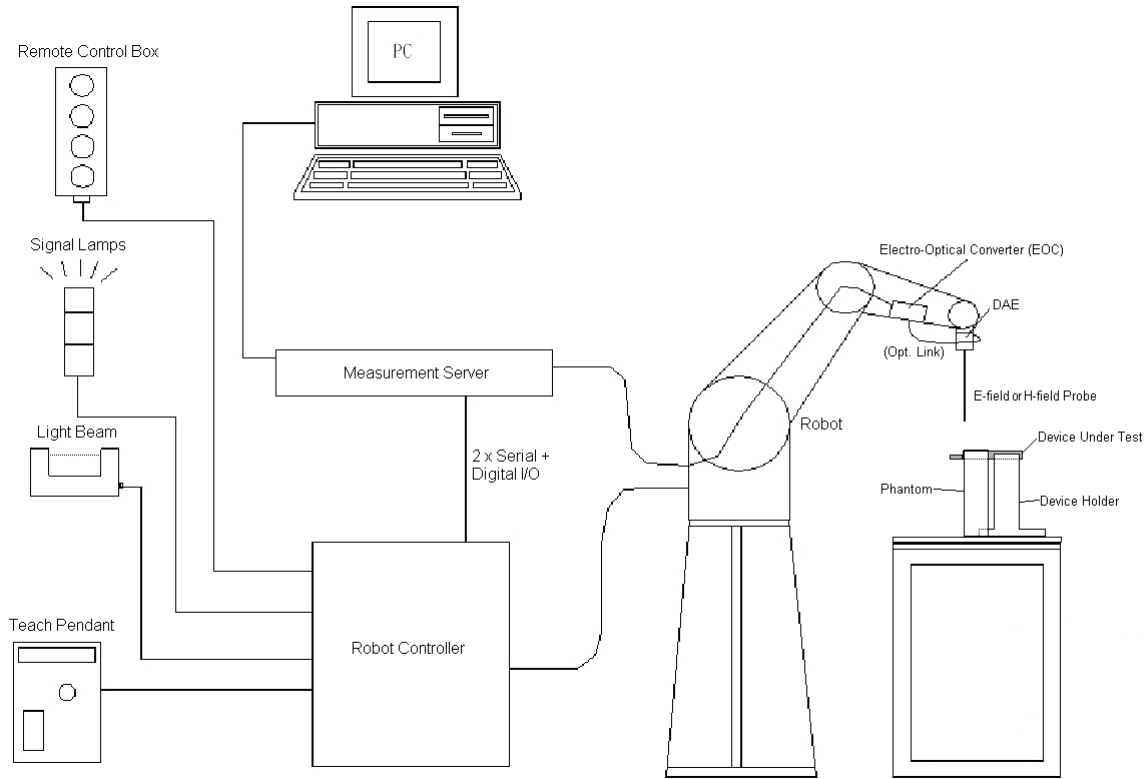
Table 4.1 Telephone near-field categories in linear units



**5. Air Interface and Operating Mode**

Air Interface	Band MHz	Type	C63.19 Tested	Simultaneous Transmitter	Name of Voice Service	Power Reduction
GSM	GSM850	VO	Yes	WLAN, BT	CMRS Voice	No
	GSM1900			WLAN, BT		No
	EDGE850	VD	Yes	WLAN, BT	Google Duo	No
	EDGE1900			WLAN, BT		
WCDMA	Band II	VO	No <sup>(1)</sup>	WLAN, BT	CMRS Voice	No
	Band IV			WLAN, BT		No
	Band V			WLAN, BT		No
	HSPA	VD	No <sup>(1)</sup>	WLAN, BT	Google Duo	No
LTE (FDD)	Band 2	VD	No <sup>(1)</sup>	WLAN, BT	VoLTE / Google Duo	No
	Band 4			WLAN, BT		No
	Band 5			WLAN, BT		No
	Band 12			WLAN, BT		No
	Band 13			WLAN, BT		No
	Band 14			WLAN, BT		No
	Band 30			WLAN, BT		No
	Band 66			WLAN, BT		No
Wi-Fi	2450	VD	Yes	GSM,WCDMA,LTE	VoWiFi / Google Duo	No
	5200			GSM,WCDMA,LTE, BT		No
	5300			GSM,WCDMA,LTE, BT		No
	5500			GSM,WCDMA,LTE, BT		No
	5800			GSM,WCDMA,LTE, BT		No
BT	2450	DT	No	GSM,WCDMA,LTE, WLAN 5GHz	NA	No
Type Transport: VO= Voice only DT= Digital Transport only (no voice) VD= CMRS and IP Voice Service over Digital Transport Remark: 1. The air interface is exempted from testing by low power exemption that its average antenna input power plus its MIF is ≤17 dBm, and is rated as M4.						

## 6. Measurement System Specification



**Fig 6.1 System Configurations**

### 6.1 E-Field Probe System

#### E-Field Probe Specification

<EF3DV3>

<b>Construction</b>	One dipole parallel, two dipoles normal to probe axis Built-in shielding against static charges
<b>Calibration</b>	In air from 30 MHz to 6.0 GHz (absolute accuracy $\pm 6.0\%$ , $k=2$ )
<b>Frequency</b>	30 MHz to 6 GHz; Linearity: $\pm 2.0$ dB (100 MHz to 3 GHz)
<b>Directivity</b>	$\pm 0.2$ dB in air (rotation around probe axis) $\pm 0.4$ dB in air (rotation normal to probe axis)
<b>Dynamic Range</b>	2 V/m to 1000 V/m (M3 or better device readings fall well below diode compression point)
<b>Linearity</b>	$\pm 0.2$ dB
<b>Dimensions</b>	Overall length: 337 mm (Tip: 16 mm) Tip diameter: 4 mm (Body: 12 mm) Distance from probe tip to dipole centers: 1.5 mm



**Photo of E-field Probe**

#### Probe Tip Description:

HAC field measurements take place in the close near field with high gradients. Increasing the measuring distance from the source will generally decrease the measured field values (in case of the validation dipole approx. 10% per mm).

## 6.2 Data Storage and Evaluation

The DASY software stores the assessed data from the data acquisition electronics as raw data (in microvolt readings from the probe sensors), together with all the necessary software parameters for the data evaluation (probe calibration data, and device frequency and modulation data) in measurement files.

<b>Probe parameters :</b>	- Sensitivity	Norm <sub>i</sub> , a <sub>i0</sub> , a <sub>i1</sub> , a <sub>i2</sub>
	- Conversion factor	ConvF <sub>i</sub>
	- Diode compression point	dcp <sub>i</sub>
<b>Device parameters :</b>	- Frequency	f
	- Crest factor	cf
<b>Media parameters :</b>	- Conductivity	σ
	- Density	ρ

The formula for each channel can be given as :

$$V_i = U_i + U_i^2 \cdot \frac{cf}{dcp_i}$$

with  $V_i$  = compensated signal of channel  $i$ , ( $i = x, y, z$ )  
 $U_i$  = input signal of channel  $i$ , ( $i = x, y, z$ )  
 $cf$  = crest factor of exciting field (DASY parameter)  
 $dcp_i$  = diode compression point (DASY parameter)

From the compensated input signals, the primary field data for each channel can be evaluated :

$$\text{E-field Probes : } E_i = \sqrt{\frac{V_i}{\text{Norm}_i \cdot \text{ConvF}}}$$

with  $V_i$  = compensated signal of channel  $i$ , ( $i = x, y, z$ )  
 $\text{Norm}_i$  = sensor sensitivity of channel  $i$ , ( $i = x, y, z$ ),  $\mu\text{V}/(\text{V}/\text{m})^2$  for E-field Probes  
 $\text{ConvF}$  = sensitivity enhancement in solution  
 $f$  = carrier frequency [GHz]  
 $E_i$  = electric field strength of channel  $i$  in V/m

The RSS value of the field components gives the total field strength (Hermitian magnitude) :

$$E_{\text{tot}} = \sqrt{E_x^2 + E_y^2 + E_z^2}$$

The primary field data are used to calculate the derived field units.





## **7. RF Emissions Test Procedure**

Referenced from ANSI C63.19 -2011 section 5.5.1

- a. Confirm the proper operation of the field probe, probe measurement system, and other instrumentation and the positioning system.
- b. Position the WD in its intended test position.
- c. Set the WD to transmit a fixed and repeatable combination of signal power and modulation characteristic that is representative of the worst case (highest interference potential) encountered in normal use. Transiently occurring start-up, changeover, or termination conditions, or other operations likely to occur less than 1% of the time during normal operation, may be excluded from consideration.
- d. The center sub-grid shall be centered on the T-Coil mode perpendicular measurement point or the acoustic output, as appropriate. Locate the field probe at the initial test position in the 50 mm by 50 mm grid, which is contained in the measurement plane, refer to illustrated in Figure 8.2. If the field alignment method is used, align the probe for maximum field reception.
- e. Record the reading at the output of the measurement system.
- f. Scan the entire 50 mm by 50 mm region in equality spaced increments and record the reading at each measurement point, The distance between measurement points shall be sufficient to assure the identification of the maximum reading.
- g. Identify the five contiguous sub-grids around the center sub-grid whose maximum reading is the lowest of all available choices. This eliminates the three sub-grids with the maximum readings. Thus, the six areas to be used to determine the WD's highest emissions are identified.
- h. Identify the maximum reading within the non-excluded sub-grids identified in step g).
  - i. Indirect measurement method
  - j. The RF audio interference level in dB (V/m) is obtained by adding the MIF (in dB) to the maximum steady-state rms field-strength reading, in dB (V/m)
- k. Compare this RF audio interference level with the categories in ANSI C63.19-2011 clause 8 and record the resulting WD category rating.
- l. For the T-Coil perpendicular measurement location is  $\geq 5.0$  mm from the center of the acoustic output, then two different 50 mm by 50 mm areas may need to be scanned, the first for the microphone mode assessment and the second for the T-Coil assessment.
- m. The second for the T-Coil assessment, with the grid shifted so that it is centered on the perpendicular measurement point. Record the WD category rating.

**Test Instructions**

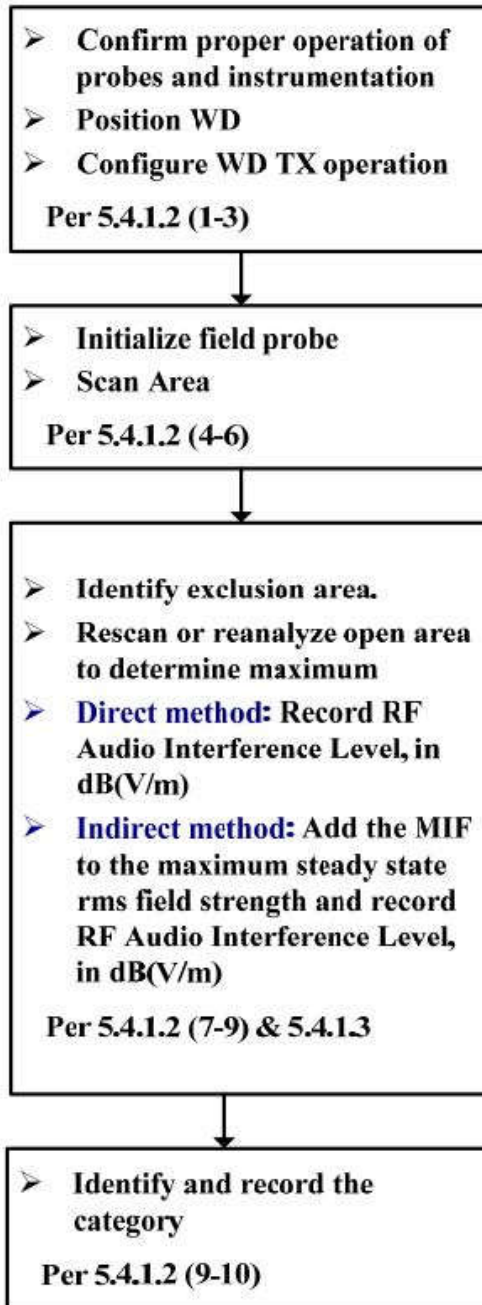
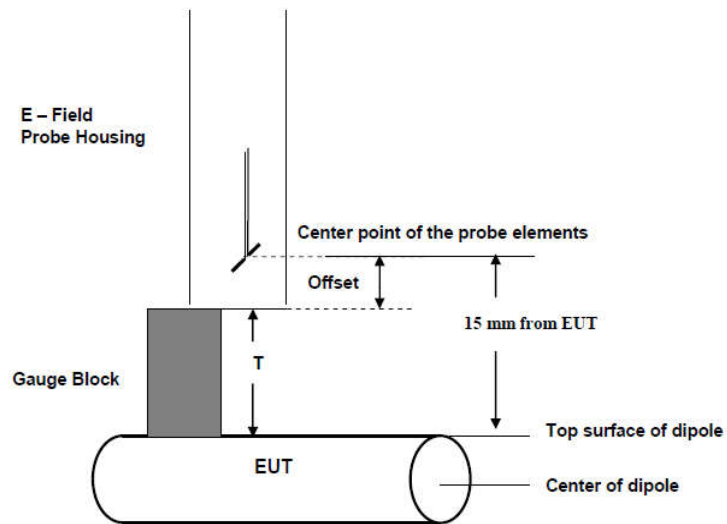


Figure 8.1 RF Emissions Flow Chart



**Fig 8.2 EUT reference and plane for HAC RF emission measurements**



**Fig. 8.3 Gauge block with E-field probe**



**8. Test Equipment List**

Manufacturer	Name of Equipment	Type/Model	Serial Number	Calibration	
				Last Cal.	Due Date
SPEAG	835MHz Calibration Dipole	CD835V3	1045	Sep. 19, 2018	Sep. 16, 2021
SPEAG	1880MHz Calibration Dipole	CD1880V3	1038	Sep. 19, 2018	Sep. 16, 2021
SPEAG	2450MHz Calibration Dipole	CD2450V3	1186	Jan. 30, 2019	Jan. 27, 2022
SPEAG	5500Mhz Calibration Dipole	CD5500V3	1009	Jan. 30, 2019	Jan. 27, 2022
SPEAG	Data Acquisition Electronics	DAE4	1386	Jan. 13, 2021	Jan. 12, 2022
SPEAG	Isotropic E-Field Probe	EF3DV3	4053	Apr. 29, 2021	Apr. 28, 2022
SPEAG	Test Arch Phantom	N/A	N/A	NCR	NCR
SPEAG	Phone Positioner	N/A	N/A	NCR	NCR
Anritsu	Radio communication analyzer	MT8820C	6201300653	Jul. 14, 2021	Jul. 13, 2022
R&S	Base Station(Measure)	CMU200	108440	Dec. 25, 2020	Dec. 24, 2021
R&S	Base Station(Measure)	CMW500	106599	Oct. 15, 2020	Oct. 14, 2021
Anritsu	Power Sensor	MA2411B	1207253	Dec. 25, 2020	Dec. 24, 2021
Anritsu	Power Meter	ML2495A	1218010	Dec. 25, 2020	Dec. 24, 2021
R&S	Power Sensor	NRP50S	101254	Apr. 09, 2021	Apr. 08, 2022
Agilent	Signal Generator	N5181A	MY50145381	NCR	NCR
Agilent	Dual Directional Coupler	778D	50422	NCR	NCR
Woken	Attenuator	WK0602-XX	N/A	NCR	NCR
AR	Amplifier	5S1G4	0333096	Apr. 08, 2021	Apr. 07, 2022
mini-circuits	Amplifier	ZVE-3W-83+	599201528	Apr. 08, 2021	Apr. 07, 2022
R&S	Spectrum Analyzer	FSP7	100818	Jul. 14, 2021	Jul. 13, 2022
Anymetre	Thermo-Hygrometer	JR593	2015030904	Jul. 17, 2021	Jul. 16, 2022
Weinschel	Attenuator 1	3M-10	N/A	NCR	NCR
Weinschel	Attenuator 2	3M-20	N/A	NCR	NCR
SPEAG	Device Holder	N/A	N/A	NCR	NCR
ARRA	Power Divider	A3200-2	N/A	NCR	NCR
ET Industries	Dual Directional Coupler	C-058-10	N/A	NCR	NCR

**Note:**

1. NCR: "No-Calibration Required"
2. Referring to KDB 865664 D01v01r04, the dipole calibration interval can be extended to 3 years with justification. The dipoles are also not physically damaged, or repaired during the interval.
3. The justification data can be found in appendix C. The return loss is < -20dB, within 20% of prior calibration, the impedance is within 5 ohm of prior calibration.

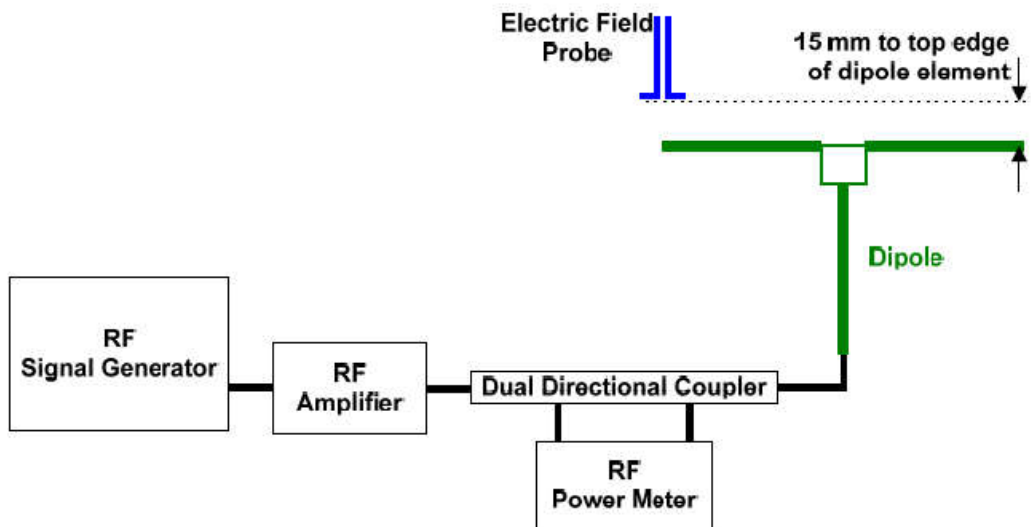
### 9. Measurement System Validation

Each DASY system is equipped with one or more system validation kits. These units, together with the predefined measurement procedures within the DASY software, enable the user to conduct the system performance check and system validation. System validation kit includes a dipole, tripod holder to fix it underneath the test Arch and a corresponding distance holder.

The system performance check verifies that the system operates within its specifications. System and operator errors can be detected and corrected. It is recommended that the system performance check be performed prior to any usage of the system in order to guarantee reproducible results. The system performance check uses normal HAC measurements in a simplified setup with a well characterized source. This setup was selected to give a high sensitivity to all parameters that might fail or vary over time. The system check does not intend to replace the calibration of the components, but indicates situations where the system uncertainty is exceeded due to drift or failure.

**<Test Setup>**

1. In the simplified setup for system evaluation, the EUT is replaced by a calibrated dipole and the power source is replaced by a continuous wave which comes from a signal generator.
2. The center point of the probe element(s) is 15mm from the closest surface of the dipole elements.
3. The calibrated dipole must be placed beneath the arch phantom. The equipment setup is shown below:
4. The output power on dipole port must be calibrated to 20dBm (100mW) before dipole is connected.



**Fig. 7.1 Setup Diagram**

**<Validation Results>**

Comparing to the original E-field value provided by SPEAG, the verification data should be within its specification of 18 %. Table 6.1 shows the target value and measured value. The table below indicates the system performance check can meet the variation criterion and the plots can be referred to appendix A of this report.

$$\text{Deviation} = ((\text{Average E-field Value}) - (\text{Target value})) / (\text{Target value}) * 100\%$$

Frequency (MHz)	Input Power (dBm)	Target Value (V/m)	E-Field 1 (V/m)	E-Field 2 (V/m)	Average Value (V/m)	Deviation (%)	Date
835	20	108.8	121.6	117.1	119.35	9.70	Aug. 28, 2021
1880	20	89.5	101	95.28	98.14	9.65	Aug. 28, 2021
2450	20	84.1	99.4	97.1	98.25	16.83	Aug. 28, 2021
5500	20	99.8	113.2	114.2	113.7	13.93	Aug. 28, 2021



### 10. Modulation Interference Factor

The HAC Standard ANSI C63.19-2011 defines a new scaling using the Modulation Interference Factor (MIF). For any specific fixed and repeatable modulated signal, a modulation interference factor (MIF, expressed in dB) may be developed that relates its interference potential to its steady-state rms signal level or average power level. This factor is a function only of the audio-frequency amplitude modulation characteristics of the signal and is the same for field-strength and conducted power measurements. It is important to emphasize that the MIF is valid only for a specific repeatable audio-frequency amplitude modulation characteristic. Any change in modulation characteristic requires determination and application of a new MIF

The Modulation Interference factor (MIF, in dB) is added to the measured average E-field (in dBV/m) and converts it to the RF Audio Interference level (in dBV/m). This level considers the audible amplitude modulation components in the RF E-field. CW fields without amplitude modulation are assumed to not interfere with the hearing aid electronics. Modulations without time slots and low fluctuations at low frequencies have low MIF values, TDMA modulations with narrow transmission and repetition rates of few 100 Hz have high MIF values and give similar classifications as ANSI C63.19-2011.

ER3D, EF3D and EU2D E-field probes have a bandwidth <10 kHz and can therefore not evaluate the RF envelope in the full audio band. DASY52 is therefore using the indirect measurement method according to ANSI C63.19-2011 which is the primary method. These near field probes read the averaged E-field measurement. Especially for the new high peak-to-average (PAR) signal types, the probes shall be linearized by PMR calibration in order to not overestimate the field reading. Probe Modulation Response (PMR) calibration linearizes the probe response over its dynamic range for specific modulations which are characterized by their UID and result in an uncertainty specified in the probe calibration certificate. The MIF is characteristic for a given waveform envelope and can be used as a constant conversion factor if the probe has been PMR calibrated.

The evaluation method for the MIF is defined in ANSI C63.19-2011 section D.7. An RMS demodulated RF signal is fed to a spectral filter (similar to an A weighting filter) and forwarded to a temporal filter acting as a quasi-peak detector. The averaged output of these filtering is scaled to a 1 kHz 80% AM signal as reference. MIF measurement requires additional instrumentation and is not well suited for evaluation by the end user with reasonable uncertainty. It may alternatively be determined through analysis and simulation, because it is constant and characteristic for a communication signal. DASY52 uses well-defined signals for PMR calibration. The MIF of these signals has been determined by simulation and it is automatically applied.

The MIF measurement uncertainty is estimated as follows, declared by HAC equipment provider SPEAG, for modulation frequencies from slotted waveforms with fundamental frequency and at least 2 harmonics within 10 kHz:

1. 0.2 dB for MIF: -7 to +5 dB
2. 0.5 dB for MIF: -13 to +11 dB
3. 1 dB for MIF: > -20 dB

MIF values applied in this test report were provided by the HAC equipment provider of SPEAG, and the worst values for all air interface are listed below to be determine the Low-power Exemption.

UID	Communication System Name	MIF(dB)
10021	GSM-FDD(TDMA,GMSK)	3.63
10025	EDGE-FDD (TDMA, 8PSK, TN 0)	3.75
10460	UMTS-FDD(WCDMA, AMR)	-25.43
10225	UMTS-FDD (HSPA+)	-20.39
10170	LTE-FDD(SC-FDMA,1RB,20MHz,16-QAM)	-9.76
10061	IEEE 802.11b WiFi 2.4 GHz (DSSS, 11 Mbps)	-2.02
10077	IEEE 802.11g WiFi 2.4 GHz (DSSS/OFDM, 54 Mbps)	0.12
10427	IEEE 802.11n (HT Greeneld, 150 Mbps, 64-QAM)	-13.44
10069	IEEE 802.11a/h WiFi 5 GHz (OFDM, 54 Mbps)	-3.15
10616	IEEE 802.11ac WiFi (40MHz, MCS0, 90pc duty cycle)	-5.57



11. Low-power Exemption

<Max Tune-up Limit>

ANT1:

Frequency Band		Average Power (dBm)
GSM	GSM850	33.50
	EDGE850	28.00
	GSM1900	30.50
	EDGE1900	27.50
WCDMA	Band V	24.00
	Band IV	24.00
	Band II	24.00
	HSPA	23.00
FDD LTE	Band 2	24.00
	Band 4	24.00
	Band 5	24.00
	Band 12	24.00
	Band 13	24.00
	Band 14	24.00
	Band 30	24.00
	Band 66	24.00

ANT2:

Frequency Band		Average Power (dBm)
GSM	GSM850	30.00
	EDGE850	25.00
	GSM1900	24.50
	EDGE1900	21.50
WCDMA	Band V	21.00
	Band II	18.00
	HSPA	20.00
FDD LTE	Band 2	18.00
	Band 5	20.50
	Band 30	15.50



**ANT3:**

Frequency Band		Average Power (dBm)
2.4GHz WLAN	802.11b	19.70
	802.11g	19.60
	802.11n-HT20	19.70
	802.11n-HT40	18.60

**ANT4:**

Frequency Band		Average Power (dBm)
5GHz WLAN	802.11a	20.60
	802.11n-HT20	20.50
	802.11n-HT40	19.50
	802.11ac-VHT20	20.50
	802.11ac-VHT40	19.60
	802.11ac-VHT80	18.10



**<Low Power Exemption>****ANT1:**

Air Interface	Max Average Antenna Input Power (dBm)	Worst Case MIF (dB)	Power + MIF(dB)	C63.19 test required
GSM850	33.50	3.63	37.13	Yes
EDGE850	28.00	3.75	31.75	No <sup>(1)</sup>
GSM1900	30.50	3.63	34.13	Yes
EDGE1900	27.50	3.75	31.25	No <sup>(1)</sup>
WCDMA	24.00	-25.43	-1.43	No
WCDMA - HSPA	24.00	-20.39	3.61	No
LTE - FDD	24.00	-9.76	14.24	No

**ANT2:**

Air Interface	Max Average Antenna Input Power (dBm)	Worst Case MIF (dB)	Power + MIF(dB)	C63.19 test required
GSM850	30.00	3.63	33.63	Yes
EDGE850	25.00	3.75	28.75	No <sup>(1)</sup>
GSM1900	24.50	3.63	28.13	Yes
EDGE1900	21.50	3.75	25.25	No <sup>(1)</sup>
WCDMA	21.00	-25.43	-4.43	No
WCDMA - HSPA	21.00	-20.39	0.61	No
LTE - FDD	20.50	-9.76	10.74	No

**ANT3:**

Air Interface	Max Average Antenna Input Power (dBm)	Worst Case MIF (dB)	Power + MIF(dB)	C63.19 test required
802.11b	19.70	-2.02	17.68	No <sup>(2)</sup>
802.11g	19.60	0.12	19.72	Yes
802.11n-HT20	19.70	-13.44	6.26	No
802.11n-HT40	18.60	-13.44	5.16	No

**ANT4:**

Air Interface	Max Average Antenna Input Power (dBm)	Worst Case MIF (dB)	Power + MIF(dB)	C63.19 test required
802.11a	20.60	-3.15	17.45	Yes
802.11n-HT20	20.50	-13.44	7.06	No
802.11n-HT40	19.50	-13.44	6.06	No
802.11ac-VHT20	20.50	-5.57	14.93	No
802.11ac-VHT40	19.60	-5.57	14.03	No
802.11ac-VHT80	18.10	-5.57	12.53	No

**General Note:**

- EDGE data modes is not necessary due to the GSM Voice mode is the worst case.
- 802.11b is not necessary due to the 802.11g is the worst case.
- According to ANSI C63.19 2011-version, for the air interface technology of a device is exempt from testing when its average antenna input power plus its MIF is  $\leq 17$  dBm for any of its operating modes.
- HAC RF rating is M4 for the air interface which meets the low power exemption.



12. Conducted RF Output Power (Unit: dBm)

<GSM>

ANT1:

Average Antenna Input Power(dBm)						
Band	GSM850			GSM1900		
Channel	128	189	251	512	661	810
Frequency (MHz)	824.2	836.4	848.8	1850.2	1880	1909.8
GSM (GMSK, 1 Tx slot)	31.97	32.15	32.25	29.65	29.72	29.51

ANT2:

Average Antenna Input Power(dBm)						
Band	GSM850			GSM1900		
Channel	128	189	251	512	661	810
Frequency (MHz)	824.2	836.4	848.8	1850.2	1880	1909.8
GSM (GMSK, 1 Tx slot)	28.06	28.18	28.35	23.02	23.16	22.72

<WLAN>

Mode	Channel	Frequency (MHz)	Average power (dBm)
2.4GHz WLAN	802.11g 6Mbps	1	17.40
		6	17.60
		11	16.90

Mode	Channel	Frequency (MHz)	Average power (dBm)
5.3GHz WLAN	802.11a 6Mbps	52	18.60
		56	18.58
		60	18.54
		64	17.52
5.5GHz WLAN	802.11a 6Mbps	100	16.72
		116	18.50
		132	17.95
		140	15.44



**13. HAC RF Emission Test Results**

Plot No.	Air Interface	Modulation / Mode	Channel	Transmit Ant.	Average Antenna Input Power (dBm)	MIF	E-Field (dBV/m)	Margin to FCC M3 limit (dB)	E-Field M Rating
01	GSM850	GSM Voice	128	Ant 1	31.97	3.63	40.06	4.94	M3
02	GSM850	GSM Voice	189	Ant 1	32.15	3.63	39.28	5.72	M4
03	GSM850	GSM Voice	251	Ant 1	32.25	3.63	38.24	6.76	M4
04	GSM850	GSM Voice	128	Ant 2	28.06	3.63	40.37	4.63	M3
05	GSM850	GSM Voice	189	Ant 2	28.18	3.63	39.95	5.05	M4
06	GSM850	GSM Voice	251	Ant 2	28.35	3.63	39.58	5.42	M4
07	GSM1900	GSM Voice	512	Ant 1	29.65	3.63	34.69	0.31	M3
08	GSM1900	GSM Voice	661	Ant 1	29.72	3.63	34.35	0.65	M3
09	GSM1900	GSM Voice	810	Ant 1	29.51	3.63	33.36	1.64	M3
10	GSM1900	GSM Voice	512	Ant 2	23.02	3.63	28.98	6.02	M4
11	GSM1900	GSM Voice	661	Ant 2	23.16	3.63	28.16	6.84	M4
12	GSM1900	GSM Voice	810	Ant 2	22.72	3.63	26.52	8.48	M4
13	WLAN2.4GHz	802.11g 6Mbps	1	ANT 3	17.40	0.12	30.27	4.73	M3
14	WLAN2.4GHz	802.11g 6Mbps	6	ANT 3	17.60	0.12	30.82	4.18	M3
15	WLAN2.4GHz	802.11g 6Mbps	11	ANT 3	16.90	0.12	30.46	4.54	M3
16	WLAN5.3GHz	802.11a 6Mbps	52	Ant 4	18.6	-3.15	26.38	8.62	M4
17	WLAN5.3GHz	802.11a 6Mbps	56	Ant 4	18.58	-3.15	25.76	9.24	M4
18	WLAN5.3GHz	802.11a 6Mbps	60	Ant 4	18.54	-3.15	25.81	9.19	M4
19	WLAN5.3GHz	802.11a 6Mbps	64	Ant 4	17.52	-3.15	25.33	9.67	M4
20	WLAN5.5GHz	802.11a 6Mbps	100	Ant 4	16.72	-3.15	24.25	10.75	M4
21	WLAN5.5GHz	802.11a 6Mbps	116	Ant 4	18.50	-3.15	25.49	9.51	M4
22	WLAN5.5GHz	802.11a 6Mbps	132	Ant 4	17.95	-3.15	24.93	10.07	M4
23	WLAN5.5GHz	802.11a 6Mbps	140	Ant 4	15.44	-3.15	22.23	12.77	M4

**Remark:**

1. The HAC measurement system applies MIF value onto the measured RMS E-field, which is indirect method in ANSI C63.19 2011 version, and reports the RF audio interference level.
2. Phone Condition: Mute on; Backlight off; Max Volume

Test Engineer : David Dai



## **14. Uncertainty Assessment**

The component of uncertainty may generally be categorized according to the methods used to evaluate them. The evaluation of uncertainty by the statistical analysis of a series of observations is termed a Type A evaluation of uncertainty. The evaluation of uncertainty by means other than the statistical analysis of a series of observation is termed a Type B evaluation of uncertainty. Each component of uncertainty, however evaluated, is represented by an estimated standard deviation, termed standard uncertainty, which is determined by the positive square root of the estimated variance.

The combined standard uncertainty of the measurement result represents the estimated standard deviation of the result. It is obtained by combining the individual standard uncertainties of both Type A and Type B evaluation using the usual “root-sum-squares” (RSS) methods of combining standard deviations by taking the positive square root of the estimated variances. Expanded uncertainty is a measure of uncertainty that defines an interval about the measurement result within which the measured value is confidently believed to lie. It is obtained by multiplying the combined standard uncertainty by a coverage factor. For purpose of this document, a coverage factor two is used, which corresponds to confidence interval of about 95 %. The DASy uncertainty Budget is showed in Table 14.1.

The judgment of conformity in the report is based on the measurement results excluding the measurement uncertainty.

Error Description	Uncertainty Value (±%)	Probability	Divisor	(Ci) E	(Ci) H	Standard Uncertainty (E) (±%)
<b>Measurement System</b>						
Probe Calibration	5.1	N	1	1	1	5.1
Axial Isotropy	4.7	R	1.732	1	1	2.7
Sensor Displacement	16.5	R	1.732	1	0.145	9.5
Boundary Effects	2.4	R	1.732	1	1	1.4
Phantom Boundary Effect	7.2	R	1.732	1	0	4.2
Linearity	4.7	R	1.732	1	1	2.7
Scaling with PMR calibration	10.0	R	1.732	1	1	5.8
System Detection Limit	1.0	R	1.732	1	1	0.6
Readout Electronics	0.3	N	1	1	1	0.3
Response Time	2.6	R	1.732	1	1	1.5
Integration Time	2.6	R	1.732	1	1	1.5
RF Ambient Conditions	3.0	R	1.732	1	1	1.7
RF Reflections	12.0	R	1.732	1	1	6.9
Probe Positioner	1.2	R	1.732	1	0.67	0.7
Probe Positioning	4.7	R	1.732	1	0.67	2.7
Extrap. and Interpolation	1.0	R	1.732	1	1	0.6
<b>Test Sample Related</b>						
Device Positioning Vertical	4.7	R	1.732	1	0.67	2.7
Device Positioning Lateral	1.0	R	1.732	1	1	0.6
Device Holder and Phantom	2.4	R	1.732	1	1	1.4
Power Drift	5.0	R	1.732	1	1	2.9
<b>Phantom and Setup Related</b>						
Phantom Thickness	2.4	R	1.732	1	0.67	1.4
<b>Combined Std. Uncertainty</b>						16.4%
<b>Coverage Factor for 95 %</b>						K=2
<b>Expanded STD Uncertainty</b>						32.7%

**Table 14.1 Uncertainty Budget of HAC free field assessment**



## **15. References**

- [1] ANSI C63.19-2011, "American National Standard for Methods of Measurement of Compatibility between Wireless Communications Devices and Hearing Aids", 27 May 2011.
- [2] FCC KDB 285076 D01v05r01, "Equipment Authorization Guidance for Hearing Aid Compatibility", Apr 06, 2020
- [3] FCC KDB 285076 D02 v03r01, "Guidance for performing T-Coil tests for air interfaces supporting voice over IP (e.g., LTE and WiFi) to support CMRS based telephone services", Apr 20, 2021
- [4] SPEAG DASY System Handbook

-----THE END-----



---

## **Appendix A. Plots of System Performance Check**

The plots are shown as follows.

## HAC\_E\_Dipole\_835

### DUT: HAC-Dipole 835 MHz

Communication System: UID 0, CW; Frequency: 835 MHz; Duty Cycle: 1:1

Medium: Air Medium parameters used:  $\sigma = 0$  S/m,  $\epsilon_r = 1$ ;  $\rho = 0$  kg/m<sup>3</sup>

Ambient Temperature : 23.4 °C

#### DASY5 Configuration:

- Probe: EF3DV3 - SN4053; ConvF(1, 1, 1); Calibrated: 2021/4/29
- Sensor-Surface: (Fix Surface)
- Electronics: DAE4 Sn1386; Calibrated: 2021/1/13
- Phantom: HAC Test Arch with AMCC; Type: SD HAC P01 BA;
- Measurement SW: DASY52, Version 52.10 (3); SEMCAD X Version 14.6.13 (7474)

### E Scan - measurement distance from the probe sensor center to CD835 = 15mm/Hearing Aid Compatibility Test at 15mm distance (41x361x1): Interpolated grid:

dx=0.5000 mm, dy=0.5000 mm

Device Reference Point: 0, 0, -6.3 mm

Reference Value = 129.9 V/m; Power Drift = 0.13 dB

PMR not calibrated. PMF = 1.000 is applied.

E-field emissions = 121.6 V/m

Average value of Total=(121.6+117.1)/2=119.35 V/m

#### PMF scaled E-field

<b>Grid 1 M4</b> <b>117.6 V/m</b>	<b>Grid 2 M4</b> <b>121.6 V/m</b>	<b>Grid 3 M4</b> <b>120.2 V/m</b>
<b>Grid 4 M4</b> <b>75.95 V/m</b>	<b>Grid 5 M4</b> <b>78.21 V/m</b>	<b>Grid 6 M4</b> <b>77.83 V/m</b>
<b>Grid 7 M4</b> <b>109.8 V/m</b>	<b>Grid 8 M4</b> <b>117.1 V/m</b>	<b>Grid 9 M4</b> <b>117.0 V/m</b>

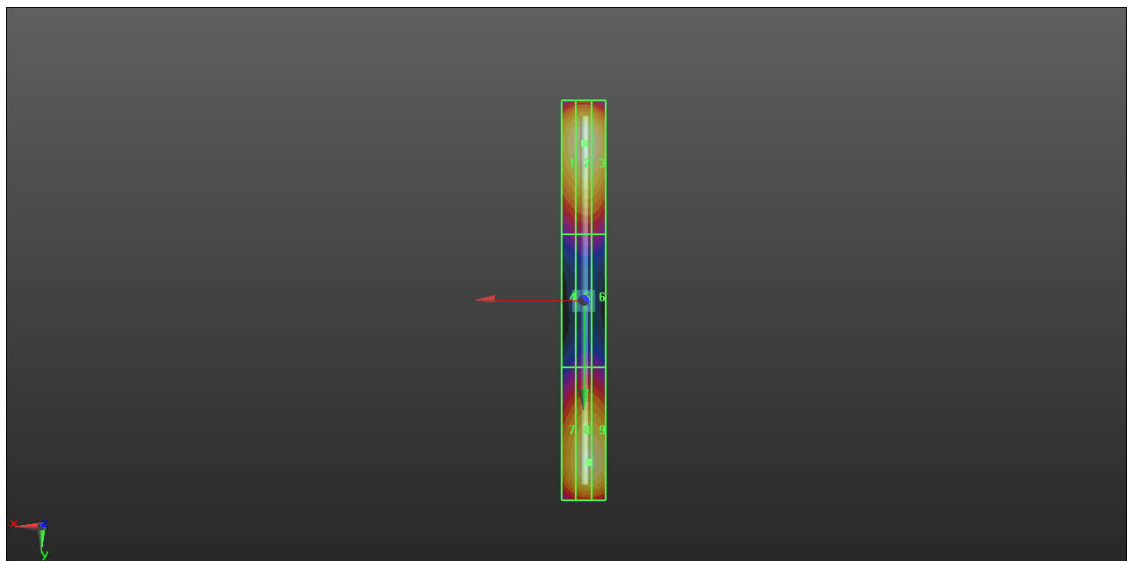
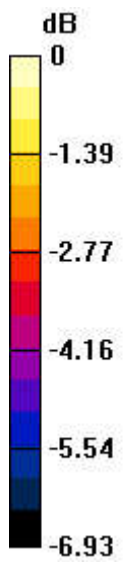
#### Cursor:

Total = 121.6 V/m

E Category: M4

Location: -0.5, -70.5, 8.7 mm





0 dB = 121.6 V/m = 41.70 dBV/m

## HAC\_E\_Dipole\_1880

### DUT: HAC-Dipole 1880 MHz

Communication System: UID 0, CW; Frequency: 1880 MHz; Duty Cycle: 1:1

Medium: Air Medium parameters used:  $\sigma = 0$  S/m,  $\epsilon_r = 1$ ;  $\rho = 0$  kg/m<sup>3</sup>

Ambient Temperature : 23.4 °C

#### DASY5 Configuration:

- Probe: EF3DV3 - SN4053; ConvF(1, 1, 1); Calibrated: 2021/4/29
- Sensor-Surface: (Fix Surface)
- Electronics: DAE4 Sn1386; Calibrated: 2021/1/13
- Phantom: HAC Test Arch with AMCC; Type: SD HAC P01 BA;
- Measurement SW: DASY52, Version 52.10 (3); SEMCAD X Version 14.6.13 (7474)

### E Scan - measurement distance from the probe sensor center to CD1880

=15mm/Hearing Aid Compatibility Test at 15mm distance (41x181x1): Interpolated

grid: dx=0.5000 mm, dy=0.5000 mm

Device Reference Point: 0, 0, -6.3 mm

Reference Value = 146.8 V/m; Power Drift = -0.04 dB

PMR not calibrated. PMF = 1.000 is applied.

E-field emissions = 101.0 V/m

Average value of Total=(101+95.28)/2=98.14 V/m

#### PMF scaled E-field

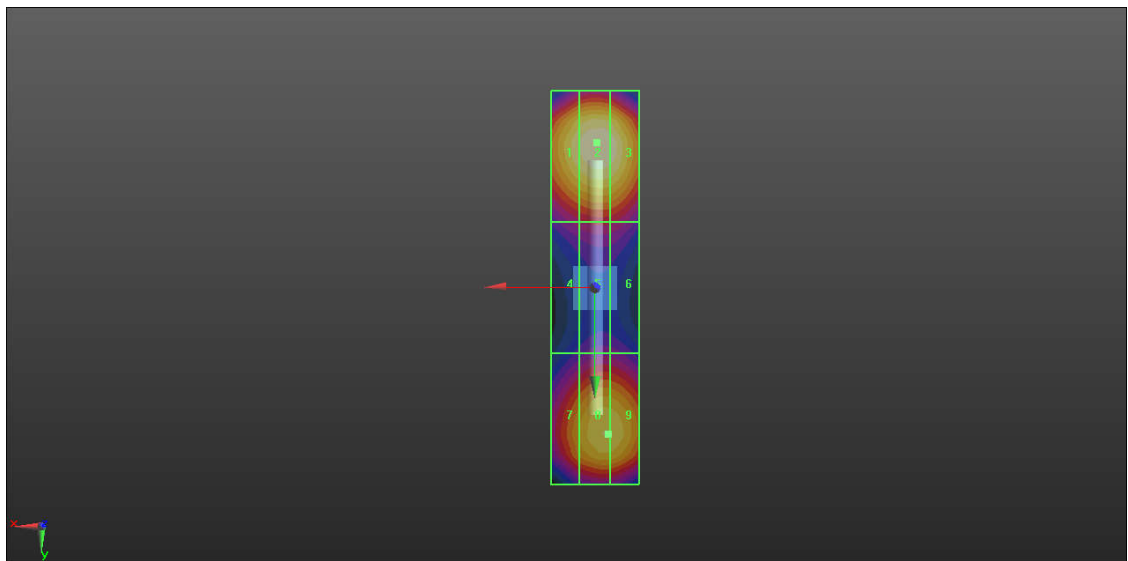
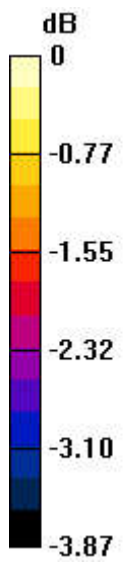
<b>Grid 1 M3</b> <b>97.94 V/m</b>	<b>Grid 2 M3</b> <b>101.0 V/m</b>	<b>Grid 3 M3</b> <b>99.76 V/m</b>
<b>Grid 4 M3</b> <b>79.12 V/m</b>	<b>Grid 5 M3</b> <b>80.72 V/m</b>	<b>Grid 6 M3</b> <b>80.31 V/m</b>
<b>Grid 7 M3</b> <b>90.04 V/m</b>	<b>Grid 8 M3</b> <b>95.28 V/m</b>	<b>Grid 9 M3</b> <b>95.21 V/m</b>

#### Cursor:

Total = 101.0 V/m

E Category: M3

Location: -0.5, -33, 8.7 mm



0 dB = 101.0 V/m = 40.09 dBV/m

## HAC\_E\_Dipole\_2450

### DUT: HAC-Dipole 2450 MHz

Communication System: UID 0, CW; Frequency: 2450 MHz; Duty Cycle: 1:1

Medium: Air Medium parameters used:  $\sigma = 0$  S/m,  $\epsilon_r = 1$ ;  $\rho = 0$  kg/m<sup>3</sup>

Ambient Temperature : 23.4 °C

#### DASY5 Configuration:

- Probe: EF3DV3 - SN4053; ConvF(1, 1, 1); Calibrated: 2021/4/29
- Sensor-Surface: (Fix Surface)
- Electronics: DAE4 Sn1386; Calibrated: 2021/1/13
- Phantom: HAC Test Arch with AMCC; Type: SD HAC P01 BA;
- Measurement SW: DASY52, Version 52.10 (3); SEMCAD X Version 14.6.13 (7474)

### E Scan - measurement distance from the probe sensor center to CD2450

=15mm/Hearing Aid Compatibility Test at 15mm distance (41x181x1): Interpolated

grid: dx=0.5000 mm, dy=0.5000 mm

Device Reference Point: 0, 0, -6.3 mm

Reference Value = 85.67 V/m; Power Drift = 0.02 dB

PMR not calibrated. PMF = 1.000 is applied.

E-field emissions = 99.40 V/m

Average value of Total=(99.4+97.1)/2=98.25 V/m

#### PMF scaled E-field

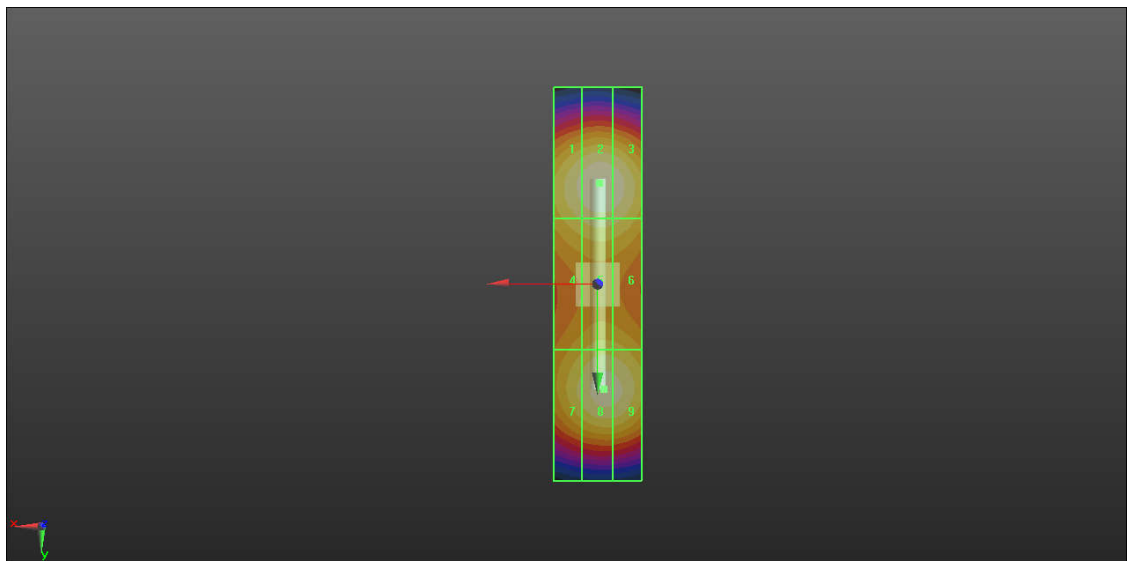
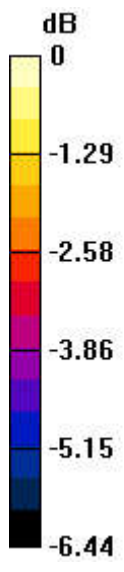
<b>Grid 1 M3</b> <b>96.33 V/m</b>	<b>Grid 2 M3</b> <b>99.40 V/m</b>	<b>Grid 3 M3</b> <b>98.22 V/m</b>
<b>Grid 4 M3</b> <b>90.77 V/m</b>	<b>Grid 5 M3</b> <b>92.94 V/m</b>	<b>Grid 6 M3</b> <b>92.03 V/m</b>
<b>Grid 7 M3</b> <b>92.05 V/m</b>	<b>Grid 8 M3</b> <b>97.10 V/m</b>	<b>Grid 9 M3</b> <b>96.65 V/m</b>

#### Cursor:

Total = 99.40 V/m

E Category: M3

Location: -0.5, -23, 8.7 mm



0 dB = 99.40 V/m = 39.95 dBV/m

## HAC\_E\_Dipole\_5500

### DUT: HAC-Dipole 5500 MHz

Communication System: UID 0, CW (0); Frequency: 5500 MHz; Duty Cycle: 1:1

Medium: Air Medium parameters used:  $\sigma = 0$  S/m,  $\epsilon_r = 1$ ;  $\rho = 0$  kg/m<sup>3</sup>

Ambient Temperature : 23.4 °C

#### DASY5 Configuration:

- Probe: EF3DV3 - SN4053; ConvF(1, 1, 1); Calibrated: 2021/4/29
- Sensor-Surface: (Fix Surface)
- Electronics: DAE4 Sn1386; Calibrated: 2021/1/13
- Phantom: HAC Test Arch with AMCC; Type: SD HAC P01 BA;
- Measurement SW: DASY52, Version 52.10 (3); SEMCAD X Version 14.6.13 (7474)

### E Scan - measurement distance from the probe sensor center to CD5500

=15mm/Hearing Aid Compatibility Test at 15mm distance (41x181x1): Interpolated

grid: dx=0.5000 mm, dy=0.5000 mm

Device Reference Point: 0, 0, -6.3 mm

Reference Value = 37.61 V/m; Power Drift = -0.02 dB

PMR not calibrated. PMF = 1.000 is applied.

E-field emissions = 116.6 V/m

Average value of Total=(113.2+114.2)/2=113.7 V/m

#### PMF scaled E-field

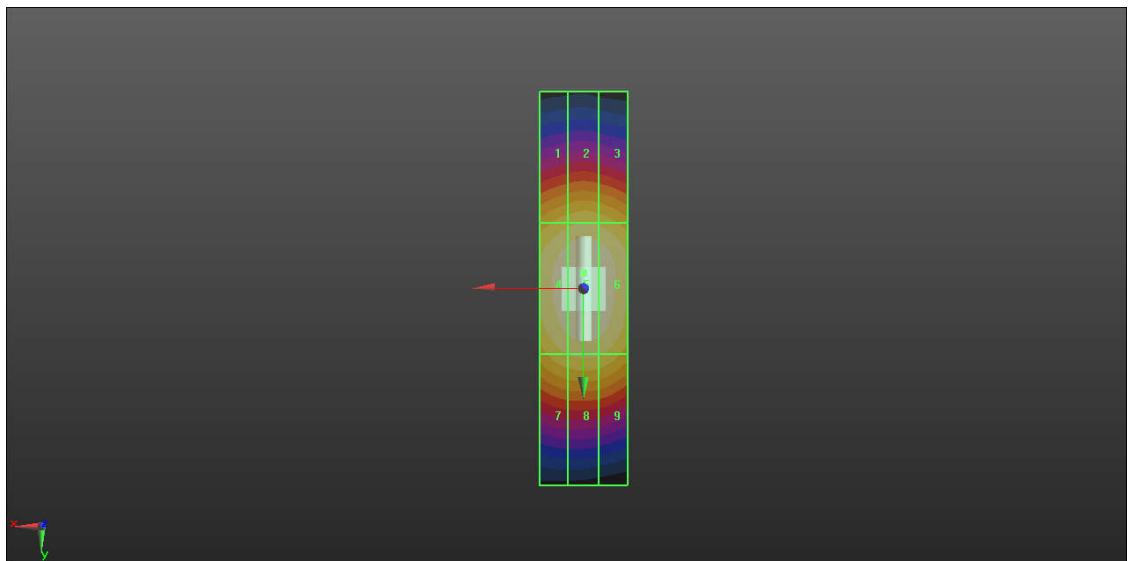
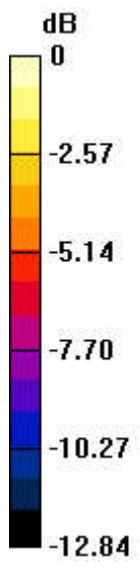
<b>Grid 1 M3</b> <b>92.81 V/m</b>	<b>Grid 2 M3</b> <b>96.12 V/m</b>	<b>Grid 3 M3</b> <b>94.07 V/m</b>
<b>Grid 4 M2</b> <b>113.2 V/m</b>	<b>Grid 5 M2</b> <b>116.6 V/m</b>	<b>Grid 6 M2</b> <b>114.2 V/m</b>
<b>Grid 7 M3</b> <b>95.91 V/m</b>	<b>Grid 8 M3</b> <b>98.57 V/m</b>	<b>Grid 9 M3</b> <b>97.06 V/m</b>

#### Cursor:

Total = 116.6 V/m

E Category: M2

Location: 0, -3.5, 8.7 mm



0 dB = 116.6 V/m = 41.33 dBV/m



---

**Appendix B. Plots of RF Emission Measurement**

The plots are shown as follows.



**01\_HAC\_RF\_GSM850\_GSM Voice\_Ch128\_E**

Communication System: UID 10021 - DAC, GSM-FDD (TDMA, GMSK); Frequency: 824.2 MHz; Duty Cycle: 1:8.69961

Medium: Air Medium parameters used:  $\sigma = 0$  S/m,  $\epsilon_r = 1$ ;  $\rho = 0$  kg/m<sup>3</sup>  
 Ambient Temperature : 23.4 °C

DASY5 Configuration:

- Probe: EF3DV3 - SN4053; ConvF(1, 1, 1); Calibrated: 2021/4/29
- Sensor-Surface: (Fix Surface)
- Electronics: DAE4 Sn1386; Calibrated: 2021/1/13
- Phantom: HAC Test Arch with AMCC; Type: SD HAC P01 BA;
- Measurement SW: DASY52, Version 52.10 (3); SEMCAD X Version 14.6.13 (7474)

**Ch128/Hearing Aid Compatibility Test (101x101x1):** Interpolated grid: dx=0.5000 mm, dy=0.5000 mm

Device Reference Point: 0, 0, -6.3 mm

Reference Value = 80.01 V/m; Power Drift = -0.03 dB

Applied MIF = 3.63 dB

RF audio interference level = 40.06 dBV/m

**Emission category: M3**

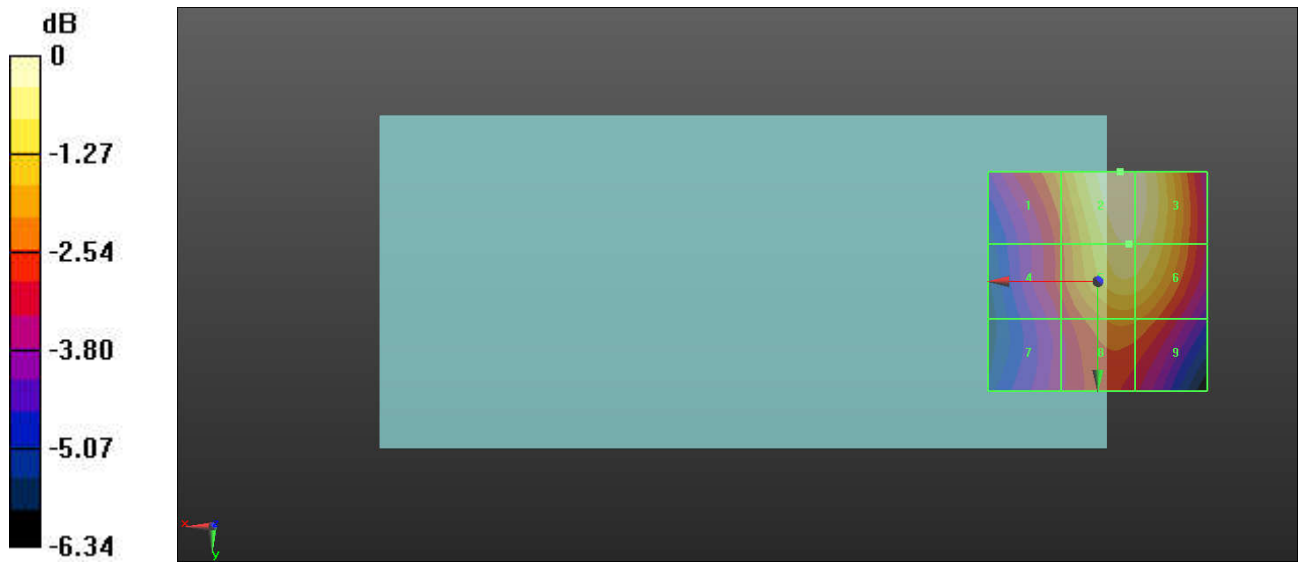
MIF scaled E-field

Grid 1 <b>M4</b> <b>38.23 dBV/m</b>	Grid 2 <b>M3</b> <b>40.05 dBV/m</b>	Grid 3 <b>M4</b> <b>39.92 dBV/m</b>
Grid 4 <b>M4</b> <b>37.38 dBV/m</b>	Grid 5 <b>M4</b> <b>39.64 dBV/m</b>	Grid 6 <b>M4</b> <b>39.6 dBV/m</b>
Grid 7 <b>M4</b> <b>36.73 dBV/m</b>	Grid 8 <b>M4</b> <b>38.12 dBV/m</b>	Grid 9 <b>M4</b> <b>38.04 dBV/m</b>

Total = 40.05 dBV/m

E Category: M3

Location: -5, -25, 7.7 mm



0 dB = 100.6 V/m = 40.05 dBV/m

**02\_HAC\_RF\_GSM850\_GSM Voice\_Ch189\_E**

Communication System: UID 10021 - DAC, GSM-FDD (TDMA, GMSK); Frequency: 836.4 MHz; Duty Cycle: 1:8.69961

Medium: Air Medium parameters used:  $\sigma = 0$  S/m,  $\epsilon_r = 1$ ;  $\rho = 0$  kg/m<sup>3</sup>  
 Ambient Temperature : 23.4 °C

DASY5 Configuration:

- Probe: EF3DV3 - SN4053; ConvF(1, 1, 1); Calibrated: 2021/4/29
- Sensor-Surface: (Fix Surface)
- Electronics: DAE4 Sn1386; Calibrated: 2021/1/13
- Phantom: HAC Test Arch with AMCC; Type: SD HAC P01 BA;
- Measurement SW: DASY52, Version 52.10 (3); SEMCAD X Version 14.6.13 (7474)

**Ch189/Hearing Aid Compatibility Test (101x101x1):** Interpolated grid: dx=0.5000 mm, dy=0.5000 mm

Device Reference Point: 0, 0, -6.3 mm

Reference Value = 74.80 V/m; Power Drift = 0.01 dB

Applied MIF = 3.63 dB

RF audio interference level = 39.28 dBV/m

**Emission category: M4**

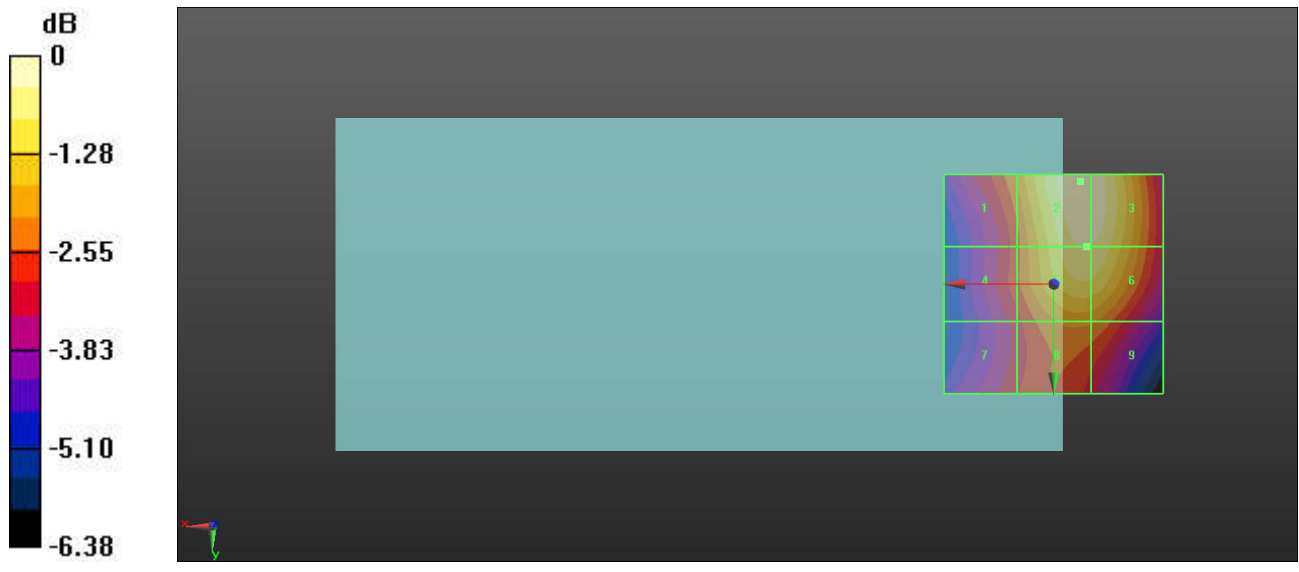
MIF scaled E-field

<b>Grid 1 M4</b> <b>37.23 dBV/m</b>	<b>Grid 2 M4</b> <b>39.28 dBV/m</b>	<b>Grid 3 M4</b> <b>39.22 dBV/m</b>
<b>Grid 4 M4</b> <b>36.64 dBV/m</b>	<b>Grid 5 M4</b> <b>38.89 dBV/m</b>	<b>Grid 6 M4</b> <b>38.87 dBV/m</b>
<b>Grid 7 M4</b> <b>36.26 dBV/m</b>	<b>Grid 8 M4</b> <b>37.3 dBV/m</b>	<b>Grid 9 M4</b> <b>37.24 dBV/m</b>

Total = 39.28 dBV/m

E Category: M4

Location: -6, -23.5, 7.7 mm



0 dB = 92.04 V/m = 39.28 dBV/m

**03\_HAC\_RF\_GSM850\_GSM Voice\_Ch251\_E**

Communication System: UID 10021 - DAC, GSM-FDD (TDMA, GMSK); Frequency: 848.8 MHz; Duty Cycle: 1:8.69961

Medium: Air Medium parameters used:  $\sigma = 0$  S/m,  $\epsilon_r = 1$ ;  $\rho = 0$  kg/m<sup>3</sup>  
 Ambient Temperature : 23.4 °C

DASY5 Configuration:

- Probe: EF3DV3 - SN4053; ConvF(1, 1, 1); Calibrated: 2021/4/29
- Sensor-Surface: (Fix Surface)
- Electronics: DAE4 Sn1386; Calibrated: 2021/1/13
- Phantom: HAC Test Arch with AMCC; Type: SD HAC P01 BA;
- Measurement SW: DASY52, Version 52.10 (3); SEMCAD X Version 14.6.13 (7474)

**Ch251/Hearing Aid Compatibility Test (101x101x1):** Interpolated grid: dx=0.5000 mm, dy=0.5000 mm

Device Reference Point: 0, 0, -6.3 mm

Reference Value = 74.21 V/m; Power Drift = 0.02 dB

Applied MIF = 3.63 dB

RF audio interference level = 38.24 dBV/m

**Emission category: M4**

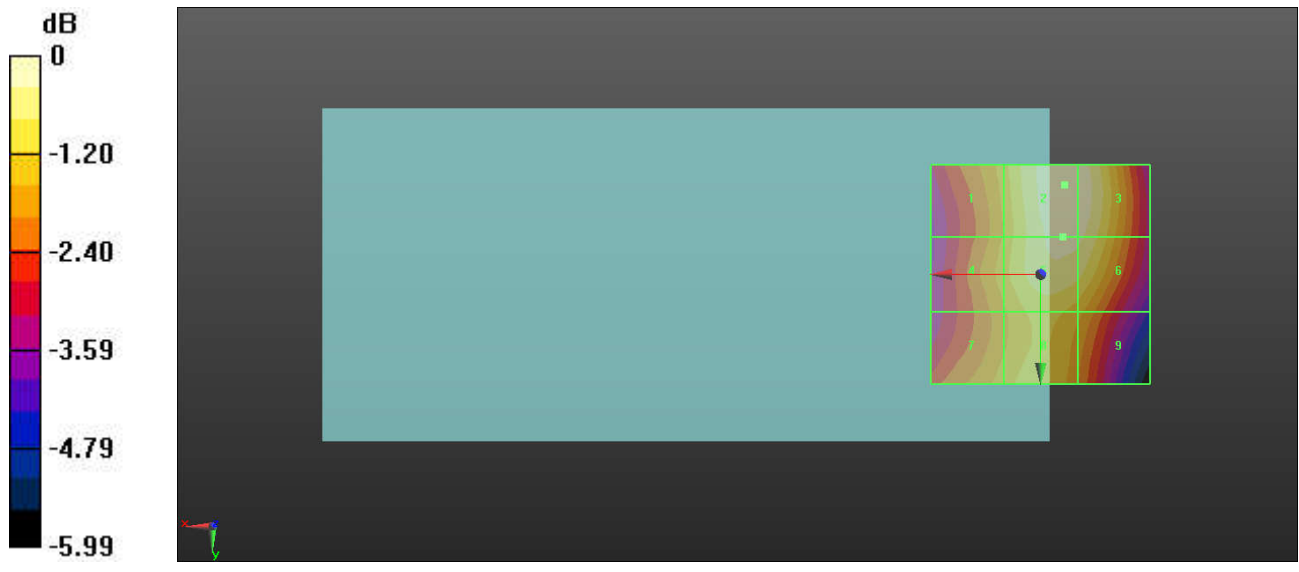
MIF scaled E-field

Grid 1 <b>M4</b> <b>36.87 dBV/m</b>	Grid 2 <b>M4</b> <b>38.24 dBV/m</b>	Grid 3 <b>M4</b> <b>38.18 dBV/m</b>
Grid 4 <b>M4</b> <b>36.87 dBV/m</b>	Grid 5 <b>M4</b> <b>38.01 dBV/m</b>	Grid 6 <b>M4</b> <b>37.93 dBV/m</b>
Grid 7 <b>M4</b> <b>36.84 dBV/m</b>	Grid 8 <b>M4</b> <b>37.21 dBV/m</b>	Grid 9 <b>M4</b> <b>36.8 dBV/m</b>

Total = 38.24 dBV/m

E Category: M4

Location: -5.5, -20.5, 7.7 mm



0 dB = 81.64 V/m = 38.24 dBV/m

**04\_HAC\_RF\_GSM850\_GSM Voice\_Ch128\_E**

Communication System: UID 10021 - DAC, GSM-FDD (TDMA, GMSK); Frequency: 824.2 MHz; Duty Cycle: 1:8.69961

Medium: Air Medium parameters used:  $\sigma = 0$  S/m,  $\epsilon_r = 1$ ;  $\rho = 0$  kg/m<sup>3</sup>  
 Ambient Temperature : 23.4 °C

**DASY5 Configuration:**

- Probe: EF3DV3 - SN4053; ConvF(1, 1, 1); Calibrated: 2021/4/29
- Sensor-Surface: (Fix Surface)
- Electronics: DAE4 Sn1386; Calibrated: 2021/1/13
- Phantom: HAC Test Arch with AMCC; Type: SD HAC P01 BA;
- Measurement SW: DASY52, Version 52.10 (3); SEMCAD X Version 14.6.13 (7474)

**Ch128/Hearing Aid Compatibility Test (101x101x1):** Interpolated grid: dx=0.5000 mm, dy=0.5000 mm

Device Reference Point: 0, 0, -6.3 mm

Reference Value = 112.2 V/m; Power Drift = -0.04 dB

Applied MIF = 3.63 dB

RF audio interference level = 40.37 dBV/m

**Emission category: M3**

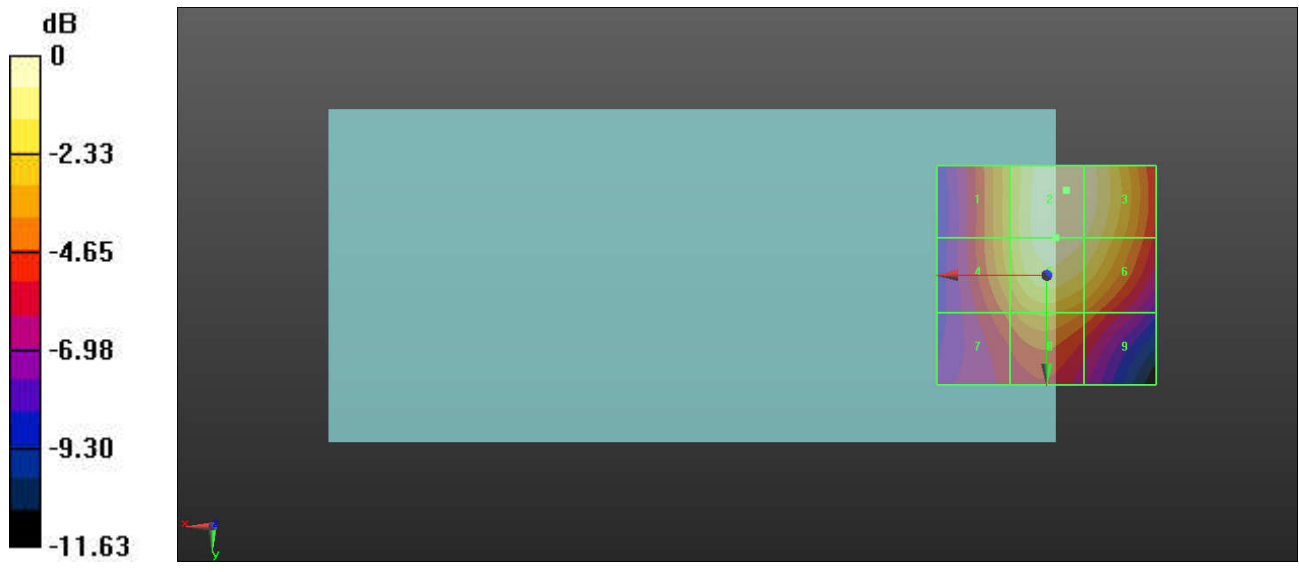
MIF scaled E-field

Grid 1 <b>M4</b> <b>37.95 dBV/m</b>	Grid 2 <b>M3</b> <b>40.37 dBV/m</b>	Grid 3 <b>M3</b> <b>40.15 dBV/m</b>
Grid 4 <b>M4</b> <b>37.93 dBV/m</b>	Grid 5 <b>M3</b> <b>40.07 dBV/m</b>	Grid 6 <b>M4</b> <b>39.64 dBV/m</b>
Grid 7 <b>M4</b> <b>36.14 dBV/m</b>	Grid 8 <b>M4</b> <b>37.5 dBV/m</b>	Grid 9 <b>M4</b> <b>36.49 dBV/m</b>

Total = 40.37 dBV/m

E Category: M3

Location: -4.5, -19.5, 7.7 mm



0 dB = 104.4 V/m = 40.37 dBV/m



**05\_HAC\_RF\_GSM850\_GSM Voice\_Ch189\_E**

Communication System: UID 10021 - DAC, GSM-FDD (TDMA, GMSK); Frequency: 836.4 MHz; Duty Cycle: 1:8.69961

Medium: Air Medium parameters used:  $\sigma = 0$  S/m,  $\epsilon_r = 1$ ;  $\rho = 0$  kg/m<sup>3</sup>  
 Ambient Temperature : 23.4 °C

DASY5 Configuration:

- Probe: EF3DV3 - SN4053; ConvF(1, 1, 1); Calibrated: 2021/4/29
- Sensor-Surface: (Fix Surface)
- Electronics: DAE4 Sn1386; Calibrated: 2021/1/13
- Phantom: HAC Test Arch with AMCC; Type: SD HAC P01 BA;
- Measurement SW: DASY52, Version 52.10 (3); SEMCAD X Version 14.6.13 (7474)

**Ch189/Hearing Aid Compatibility Test (101x101x1):** Interpolated grid: dx=0.5000 mm, dy=0.5000 mm

Device Reference Point: 0, 0, -6.3 mm

Reference Value = 107.3 V/m; Power Drift = -0.02 dB

Applied MIF = 3.63 dB

RF audio interference level = 39.95 dBV/m

**Emission category: M4**

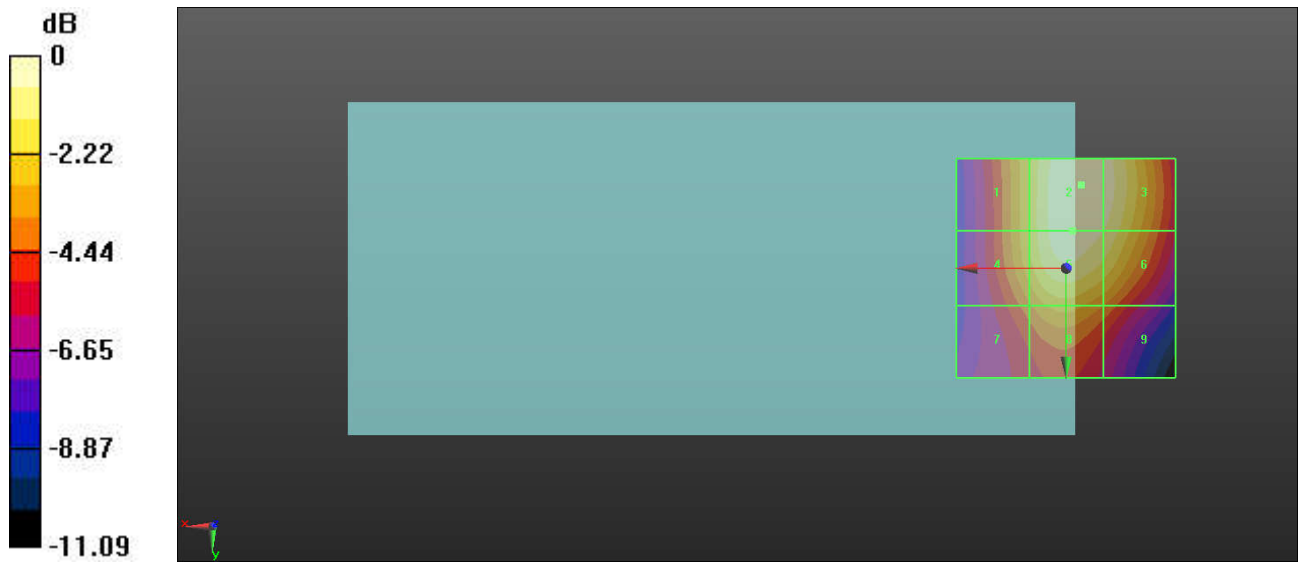
MIF scaled E-field

Grid 1 <b>M4</b> <b>37.8 dBV/m</b>	Grid 2 <b>M4</b> <b>39.95 dBV/m</b>	Grid 3 <b>M4</b> <b>39.67 dBV/m</b>
Grid 4 <b>M4</b> <b>37.77 dBV/m</b>	Grid 5 <b>M4</b> <b>39.74 dBV/m</b>	Grid 6 <b>M4</b> <b>39.2 dBV/m</b>
Grid 7 <b>M4</b> <b>36.07 dBV/m</b>	Grid 8 <b>M4</b> <b>37.34 dBV/m</b>	Grid 9 <b>M4</b> <b>36.28 dBV/m</b>

Total = 39.95 dBV/m

E Category: M4

Location: -3.5, -19, 7.7 mm



0 dB = 99.43 V/m = 39.95 dBV/m

**06\_HAC\_RF\_GSM850\_GSM Voice\_Ch251\_E**

Communication System: UID 10021 - DAC, GSM-FDD (TDMA, GMSK); Frequency: 848.8 MHz; Duty Cycle: 1:8.69961

Medium: Air Medium parameters used:  $\sigma = 0$  S/m,  $\epsilon_r = 1$ ;  $\rho = 0$  kg/m<sup>3</sup>  
 Ambient Temperature : 23.4 °C

DASY5 Configuration:

- Probe: EF3DV3 - SN4053; ConvF(1, 1, 1); Calibrated: 2021/4/29
- Sensor-Surface: (Fix Surface)
- Electronics: DAE4 Sn1386; Calibrated: 2021/1/13
- Phantom: HAC Test Arch with AMCC; Type: SD HAC P01 BA;
- Measurement SW: DASY52, Version 52.10 (3); SEMCAD X Version 14.6.13 (7474)

**Ch251/Hearing Aid Compatibility Test (101x101x1):** Interpolated grid: dx=0.5000 mm, dy=0.5000 mm

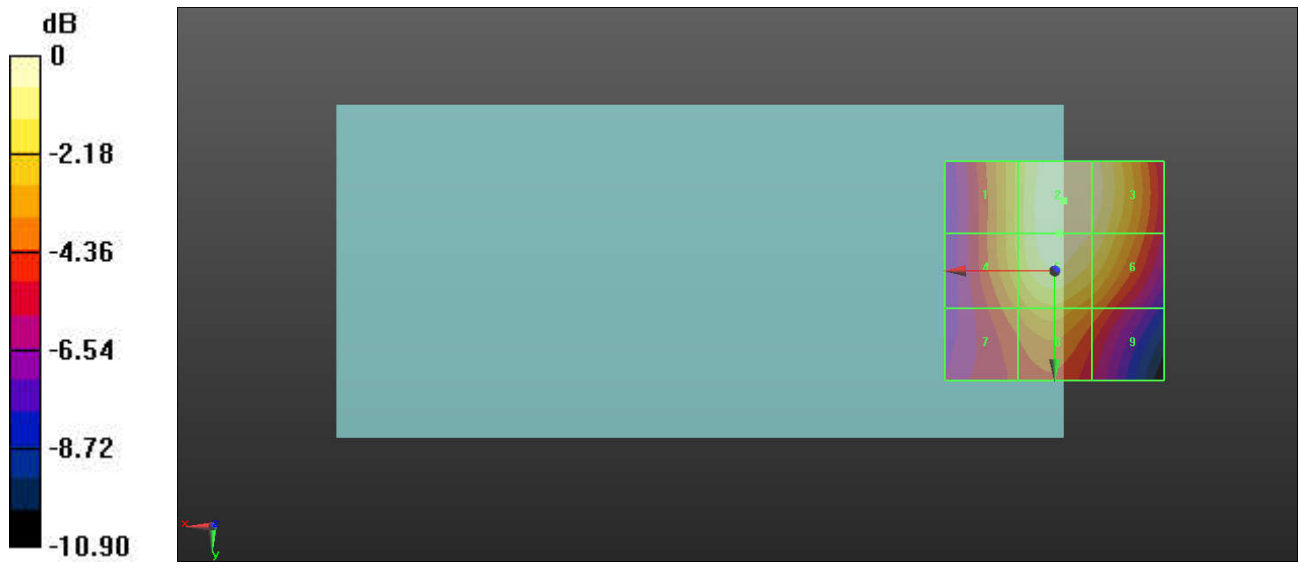
Device Reference Point: 0, 0, -6.3 mm  
 Reference Value = 104.1 V/m; Power Drift = -0.03 dB  
 Applied MIF = 3.63 dB  
 RF audio interference level = 39.58 dBV/m

**Emission category: M4**

MIF scaled E-field

<b>Grid 1 M4</b> <b>37.63 dBV/m</b>	<b>Grid 2 M4</b> <b>39.58 dBV/m</b>	<b>Grid 3 M4</b> <b>39.29 dBV/m</b>
<b>Grid 4 M4</b> <b>37.61 dBV/m</b>	<b>Grid 5 M4</b> <b>39.39 dBV/m</b>	<b>Grid 6 M4</b> <b>38.81 dBV/m</b>
<b>Grid 7 M4</b> <b>36.08 dBV/m</b>	<b>Grid 8 M4</b> <b>37.22 dBV/m</b>	<b>Grid 9 M4</b> <b>35.99 dBV/m</b>

Total = 39.58 dBV/m  
 E Category: M4  
 Location: -2, -16, 7.7 mm



0 dB = 95.23 V/m = 39.58 dBV/m

**07\_HAC RF\_GSM1900\_GSM Voice\_Ch512\_E**

Communication System: UID 10021 - DAC, GSM-FDD (TDMA, GMSK); Frequency: 1850.2 MHz; Duty Cycle: 1:8.69961

Medium: Air Medium parameters used:  $\sigma = 0$  S/m,  $\epsilon_r = 1$ ;  $\rho = 0$  kg/m<sup>3</sup>  
 Ambient Temperature : 23.4 °C

DASY5 Configuration:

- Probe: EF3DV3 - SN4053; ConvF(1, 1, 1); Calibrated: 2021/4/29
- Sensor-Surface: (Fix Surface)
- Electronics: DAE4 Sn1386; Calibrated: 2021/1/13
- Phantom: HAC Test Arch with AMCC; Type: SD HAC P01 BA;
- Measurement SW: DASY52, Version 52.10 (3); SEMCAD X Version 14.6.13 (7474)

**Ch512/Hearing Aid Compatibility Test (101x101x1):** Interpolated grid: dx=0.5000 mm, dy=0.5000 mm

Device Reference Point: 0, 0, -6.3 mm

Reference Value = 24.74 V/m; Power Drift = -0.03 dB

Applied MIF = 3.63 dB

RF audio interference level = 34.69 dBV/m

**Emission category: M3**

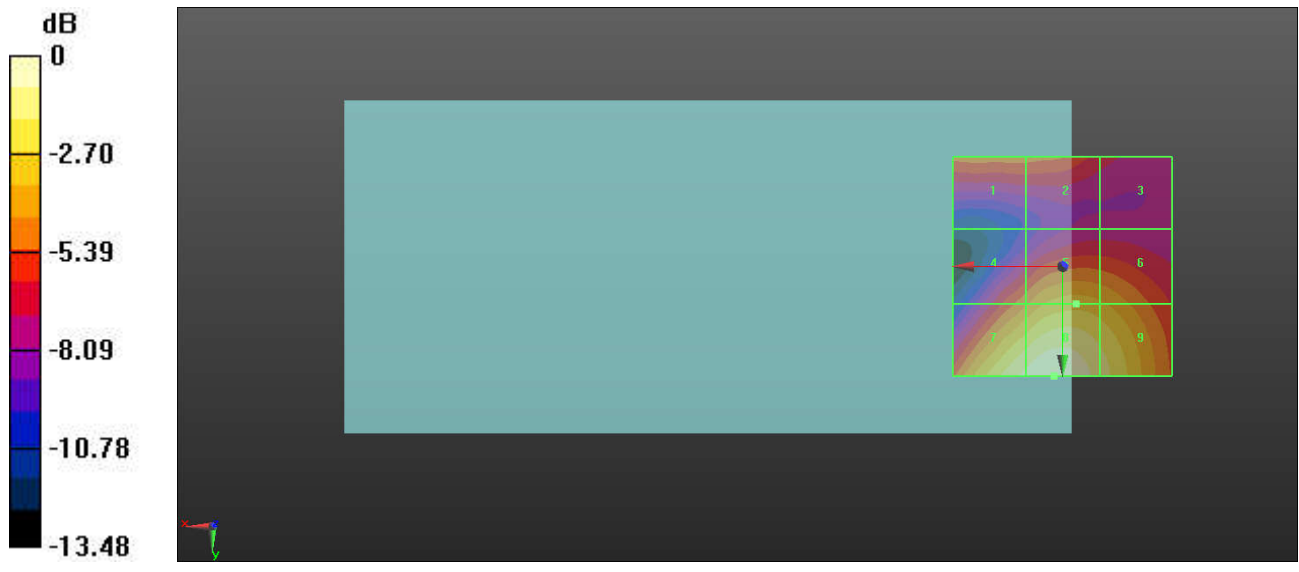
MIF scaled E-field

Grid 1 <b>M4</b> <b>29.8 dBV/m</b>	Grid 2 <b>M4</b> <b>29.76 dBV/m</b>	Grid 3 <b>M4</b> <b>28.1 dBV/m</b>
Grid 4 <b>M3</b> <b>30.07 dBV/m</b>	Grid 5 <b>M3</b> <b>31.65 dBV/m</b>	Grid 6 <b>M3</b> <b>31.3 dBV/m</b>
Grid 7 <b>M3</b> <b>34.11 dBV/m</b>	Grid 8 <b>M3</b> <b>34.69 dBV/m</b>	Grid 9 <b>M3</b> <b>33.38 dBV/m</b>

Total = 34.69 dBV/m

E Category: M3

Location: 2, 25, 7.7 mm



0 dB = 54.28 V/m = 34.69 dBV/m

**08\_HAC RF\_GSM1900\_GSM Voice\_Ch661\_E**

Communication System: UID 10021 - DAC, GSM-FDD (TDMA, GMSK); Frequency: 1880 MHz; Duty Cycle: 1:8.69961

Medium: Air Medium parameters used:  $\sigma = 0$  S/m,  $\epsilon_r = 1$ ;  $\rho = 0$  kg/m<sup>3</sup>  
 Ambient Temperature : 23.4 °C

**DASY5 Configuration:**

- Probe: EF3DV3 - SN4053; ConvF(1, 1, 1); Calibrated: 2021/4/29
- Sensor-Surface: (Fix Surface)
- Electronics: DAE4 Sn1386; Calibrated: 2021/1/13
- Phantom: HAC Test Arch with AMCC; Type: SD HAC P01 BA;
- Measurement SW: DASY52, Version 52.10 (3); SEMCAD X Version 14.6.13 (7474)

**Ch661/Hearing Aid Compatibility Test (101x101x1):** Interpolated grid: dx=0.5000 mm, dy=0.5000 mm

Device Reference Point: 0, 0, -6.3 mm

Reference Value = 22.65 V/m; Power Drift = -0.01 dB

Applied MIF = 3.63 dB

RF audio interference level = 34.35 dBV/m

**Emission category: M3**

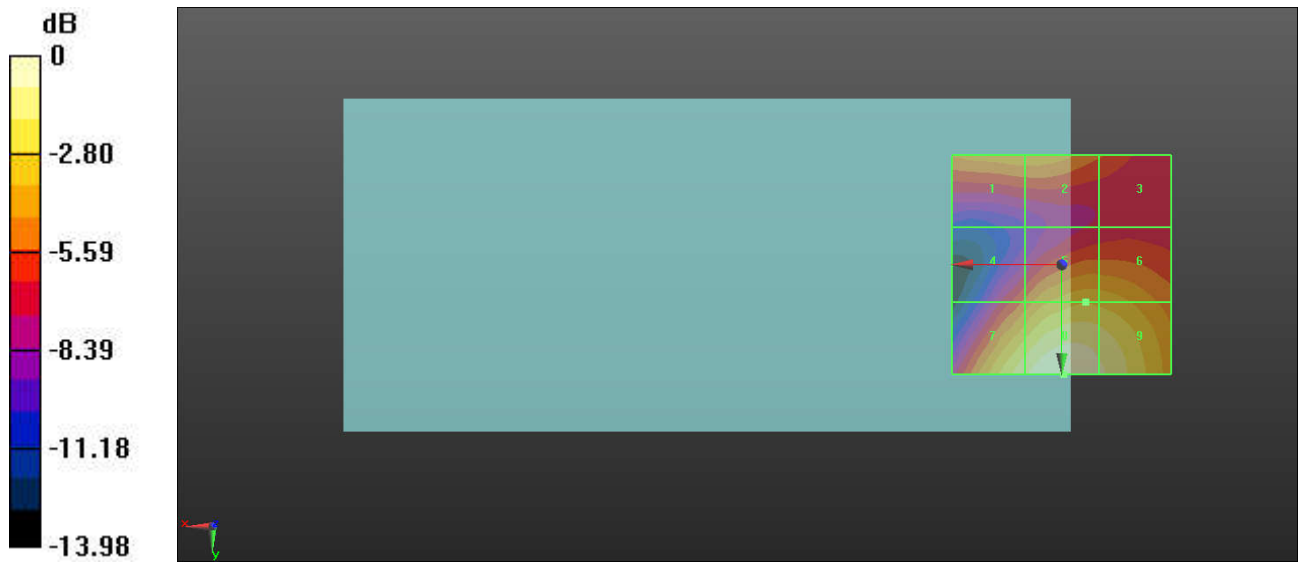
MIF scaled E-field

<b>Grid 1 M3</b> <b>30.45 dBV/m</b>	<b>Grid 2 M3</b> <b>30.45 dBV/m</b>	<b>Grid 3 M4</b> <b>28.93 dBV/m</b>
<b>Grid 4 M4</b> <b>29.04 dBV/m</b>	<b>Grid 5 M3</b> <b>31.47 dBV/m</b>	<b>Grid 6 M3</b> <b>31.33 dBV/m</b>
<b>Grid 7 M3</b> <b>33.27 dBV/m</b>	<b>Grid 8 M3</b> <b>34.35 dBV/m</b>	<b>Grid 9 M3</b> <b>33.65 dBV/m</b>

Total = 34.35 dBV/m

E Category: M3

Location: -0.5, 25, 7.7 mm



0 dB = 52.15 V/m = 34.35 dBV/m



**09\_HAC RF\_GSM1900\_GSM Voice\_Ch810\_E**

Communication System: UID 10021 - DAC, GSM-FDD (TDMA, GMSK); Frequency: 1909.8 MHz; Duty Cycle: 1:8.69961

Medium: Air Medium parameters used:  $\sigma = 0$  S/m,  $\epsilon_r = 1$ ;  $\rho = 0$  kg/m<sup>3</sup>  
 Ambient Temperature : 23.4 °C

DASY5 Configuration:

- Probe: EF3DV3 - SN4053; ConvF(1, 1, 1); Calibrated: 2021/4/29
- Sensor-Surface: (Fix Surface)
- Electronics: DAE4 Sn1386; Calibrated: 2021/1/13
- Phantom: HAC Test Arch with AMCC; Type: SD HAC P01 BA;
- Measurement SW: DASY52, Version 52.10 (3); SEMCAD X Version 14.6.13 (7474)

**Ch810/Hearing Aid Compatibility Test (101x101x1):** Interpolated grid: dx=0.5000 mm, dy=0.5000 mm

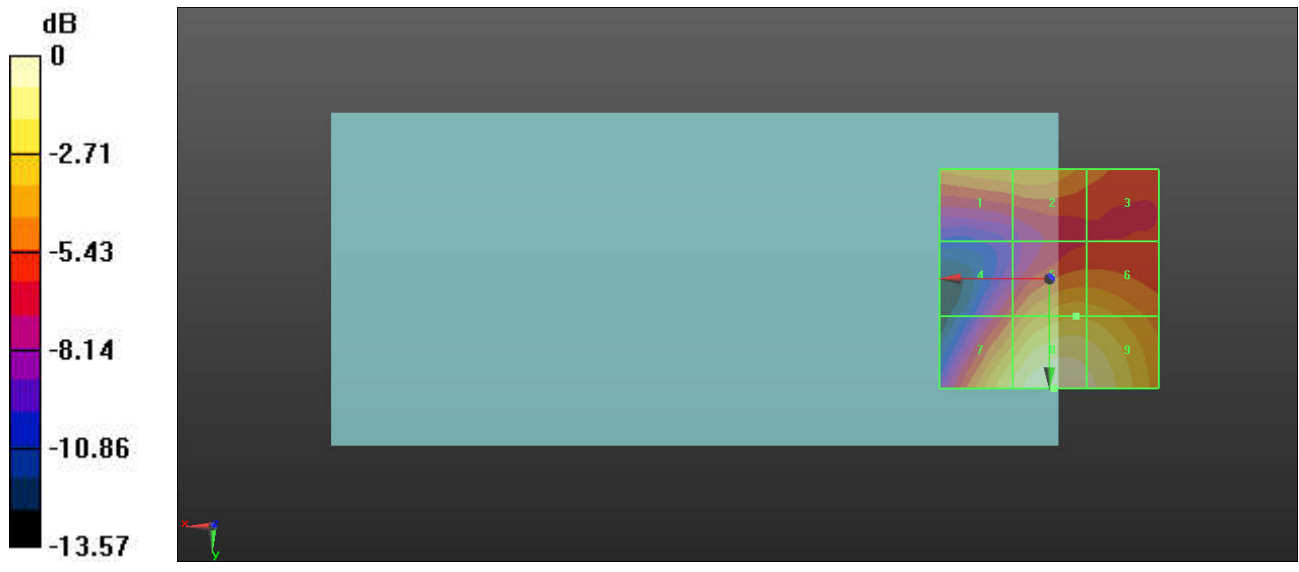
Device Reference Point: 0, 0, -6.3 mm  
 Reference Value = 20.76 V/m; Power Drift = -0.02 dB  
 Applied MIF = 3.63 dB  
 RF audio interference level = 33.36 dBV/m

**Emission category: M3**

MIF scaled E-field

Grid 1 <b>M4</b> <b>29.77 dBV/m</b>	Grid 2 <b>M4</b> <b>29.78 dBV/m</b>	Grid 3 <b>M4</b> <b>28.65 dBV/m</b>
Grid 4 <b>M4</b> <b>27.88 dBV/m</b>	Grid 5 <b>M3</b> <b>30.58 dBV/m</b>	Grid 6 <b>M3</b> <b>30.49 dBV/m</b>
Grid 7 <b>M3</b> <b>31.95 dBV/m</b>	Grid 8 <b>M3</b> <b>33.36 dBV/m</b>	Grid 9 <b>M3</b> <b>32.78 dBV/m</b>

Total = 33.36 dBV/m  
 E Category: M3  
 Location: -1, 25, 7.7 mm



0 dB = 46.56 V/m = 33.36 dBV/m

**10\_HAC RF\_GSM1900\_GSM Voice\_Ch512\_E**

Communication System: UID 10021 - DAC, GSM-FDD (TDMA, GMSK); Frequency: 1850.2 MHz; Duty Cycle: 1:8.69961

Medium: Air Medium parameters used:  $\sigma = 0$  S/m,  $\epsilon_r = 1$ ;  $\rho = 0$  kg/m<sup>3</sup>  
 Ambient Temperature : 23.4 °C

DASY5 Configuration:

- Probe: EF3DV3 - SN4053; ConvF(1, 1, 1); Calibrated: 2021/4/29
- Sensor-Surface: (Fix Surface)
- Electronics: DAE4 Sn1386; Calibrated: 2021/1/13
- Phantom: HAC Test Arch with AMCC; Type: SD HAC P01 BA;
- Measurement SW: DASY52, Version 52.10 (3); SEMCAD X Version 14.6.13 (7474)

**Ch512/Hearing Aid Compatibility Test (101x101x1):** Interpolated grid: dx=0.5000 mm, dy=0.5000 mm

Device Reference Point: 0, 0, -6.3 mm

Reference Value = 27.24 V/m; Power Drift = -0.01 dB

Applied MIF = 3.63 dB

RF audio interference level = 28.98 dBV/m

**Emission category: M4**

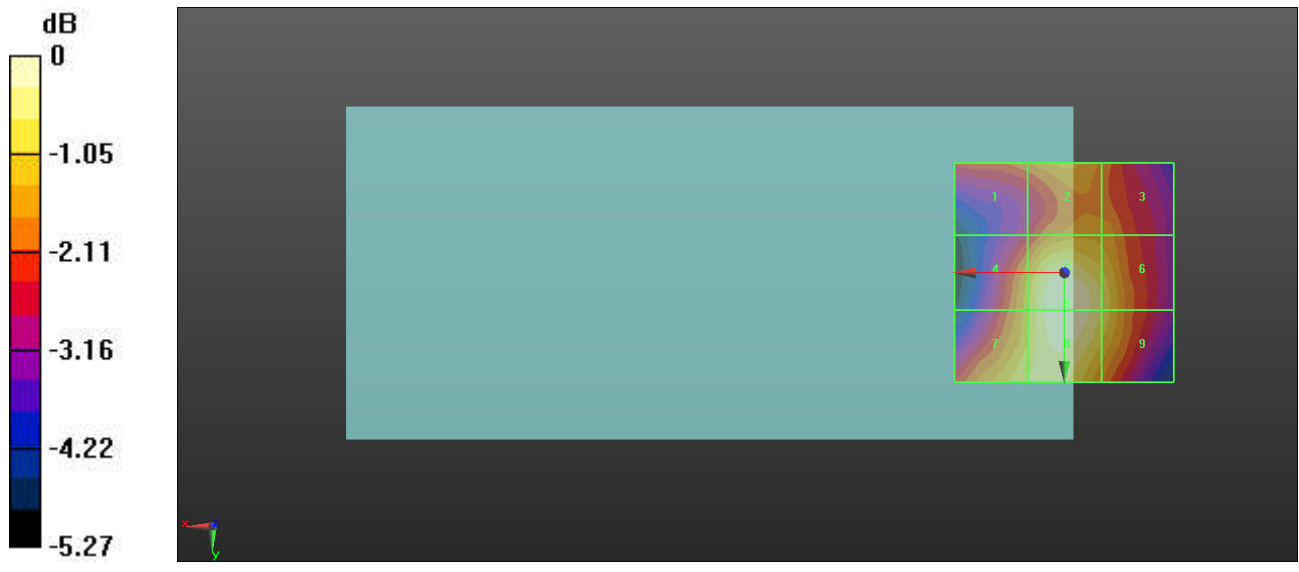
MIF scaled E-field

<b>Grid 1 M4</b> <b>27.21 dBV/m</b>	<b>Grid 2 M4</b> <b>27.72 dBV/m</b>	<b>Grid 3 M4</b> <b>27.48 dBV/m</b>
<b>Grid 4 M4</b> <b>27.81 dBV/m</b>	<b>Grid 5 M4</b> <b>28.98 dBV/m</b>	<b>Grid 6 M4</b> <b>28.27 dBV/m</b>
<b>Grid 7 M4</b> <b>28.29 dBV/m</b>	<b>Grid 8 M4</b> <b>28.96 dBV/m</b>	<b>Grid 9 M4</b> <b>28.25 dBV/m</b>

Total = 28.98 dBV/m

E Category: M4

Location: -0.5, 7, 7.7 mm



0 dB = 28.12 V/m = 28.98 dBV/m

## 11\_HAC RF\_GSM1900\_GSM Voice\_Ch661\_E

Communication System: UID 10021 - DAC, GSM-FDD (TDMA, GMSK); Frequency: 1880 MHz; Duty Cycle: 1:8.69961

Medium: Air Medium parameters used:  $\sigma = 0$  S/m,  $\epsilon_r = 1$ ;  $\rho = 0$  kg/m<sup>3</sup>  
 Ambient Temperature : 23.4 °C

### DASY5 Configuration:

- Probe: EF3DV3 - SN4053; ConvF(1, 1, 1); Calibrated: 2021/4/29
- Sensor-Surface: (Fix Surface)
- Electronics: DAE4 Sn1386; Calibrated: 2021/1/13
- Phantom: HAC Test Arch with AMCC; Type: SD HAC P01 BA;
- Measurement SW: DASY52, Version 52.10 (3); SEMCAD X Version 14.6.13 (7474)

**Ch661/Hearing Aid Compatibility Test (101x101x1):** Interpolated grid: dx=0.5000 mm, dy=0.5000 mm

Device Reference Point: 0, 0, -6.3 mm

Reference Value = 24.53 V/m; Power Drift = 0.04 dB

Applied MIF = 3.63 dB

RF audio interference level = 28.16 dBV/m

**Emission category: M4**

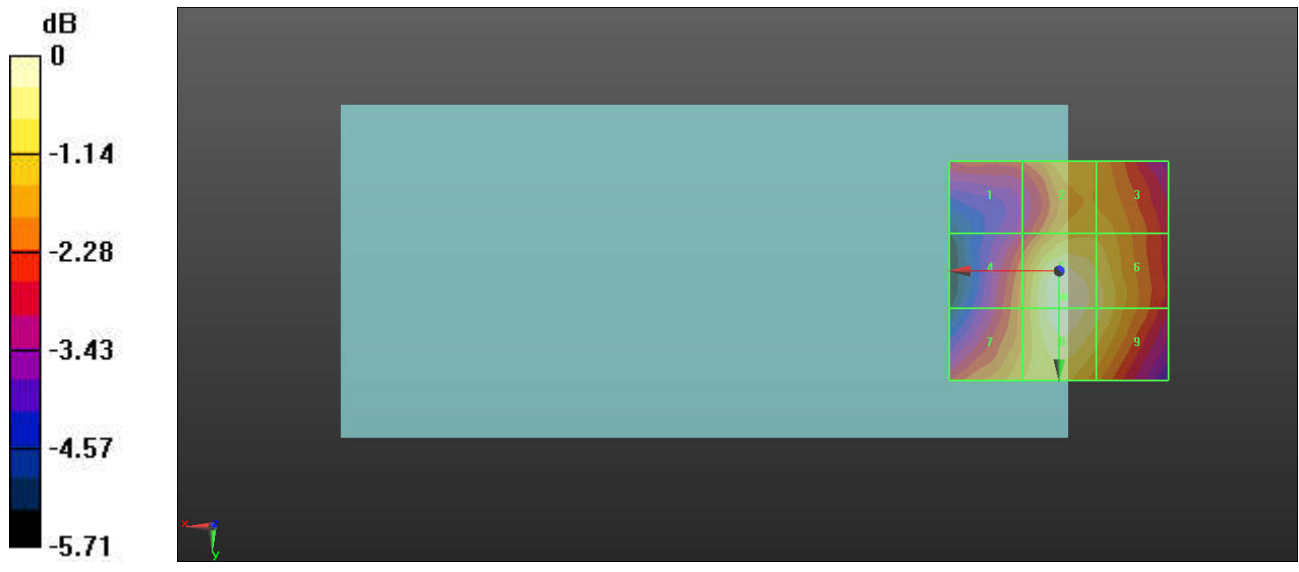
MIF scaled E-field

Grid 1 <b>M4</b> <b>25.9 dBV/m</b>	Grid 2 <b>M4</b> <b>26.97 dBV/m</b>	Grid 3 <b>M4</b> <b>26.94 dBV/m</b>
Grid 4 <b>M4</b> <b>26.49 dBV/m</b>	Grid 5 <b>M4</b> <b>28.16 dBV/m</b>	Grid 6 <b>M4</b> <b>27.6 dBV/m</b>
Grid 7 <b>M4</b> <b>27 dBV/m</b>	Grid 8 <b>M4</b> <b>28.1 dBV/m</b>	Grid 9 <b>M4</b> <b>27.59 dBV/m</b>

Total = 28.16 dBV/m

E Category: M4

Location: -1, 6, 7.7 mm



0 dB = 25.59 V/m = 28.16 dBV/m

## 12\_HAC RF\_GSM1900\_GSM Voice\_Ch810\_E

Communication System: UID 10021 - DAC, GSM-FDD (TDMA, GMSK); Frequency: 1909.8 MHz; Duty Cycle: 1:8.69961

Medium: Air Medium parameters used:  $\sigma = 0$  S/m,  $\epsilon_r = 1$ ;  $\rho = 0$  kg/m<sup>3</sup>  
 Ambient Temperature : 23.4 °C

### DASY5 Configuration:

- Probe: EF3DV3 - SN4053; ConvF(1, 1, 1); Calibrated: 2021/4/29
- Sensor-Surface: (Fix Surface)
- Electronics: DAE4 Sn1386; Calibrated: 2021/1/13
- Phantom: HAC Test Arch with AMCC; Type: SD HAC P01 BA;
- Measurement SW: DASY52, Version 52.10 (3); SEMCAD X Version 14.6.13 (7474)

**Ch810/Hearing Aid Compatibility Test (101x101x1):** Interpolated grid: dx=0.5000 mm, dy=0.5000 mm

Device Reference Point: 0, 0, -6.3 mm

Reference Value = 20.36 V/m; Power Drift = 0.03 dB

Applied MIF = 3.63 dB

RF audio interference level = 26.52 dBV/m

**Emission category: M4**

MIF scaled E-field

Grid 1 <b>M4</b> <b>24.52 dBV/m</b>	Grid 2 <b>M4</b> <b>25.64 dBV/m</b>	Grid 3 <b>M4</b> <b>25.6 dBV/m</b>
Grid 4 <b>M4</b> <b>24.85 dBV/m</b>	Grid 5 <b>M4</b> <b>26.52 dBV/m</b>	Grid 6 <b>M4</b> <b>26.21 dBV/m</b>
Grid 7 <b>M4</b> <b>25.52 dBV/m</b>	Grid 8 <b>M4</b> <b>26.46 dBV/m</b>	Grid 9 <b>M4</b> <b>26.2 dBV/m</b>

Total = 26.52 dBV/m

E Category: M4

Location: -1.5, 6, 7.7 mm



0 dB = 21.19 V/m = 26.52 dBV/m



**13\_HAC\_RF\_WLAN2.4GHz\_802.11g 6Mbps\_Ch1\_E**

Communication System: UID 10077 - CAB, IEEE 802.11g WiFi 2.4 GHz (DSSS/OFDM, 54 Mbps);  
 Frequency: 2412 MHz;Duty Cycle: 1:12.5777  
 Medium: Air Medium parameters used:  $\sigma = 0$  S/m,  $\epsilon_r = 1$ ;  $\rho = 0$  kg/m<sup>3</sup>  
 Ambient Temperature : 23.4 °C

DASY5 Configuration:

- Probe: EF3DV3 - SN4053; ConvF(1, 1, 1); Calibrated: 2021/4/29
- Sensor-Surface: (Fix Surface)
- Electronics: DAE4 Sn1386; Calibrated: 2021/1/13
- Phantom: HAC Test Arch with AMCC; Type: SD HAC P01 BA;
- Measurement SW: DASY52, Version 52.10 (3); SEMCAD X Version 14.6.13 (7474)

**Ch1/Hearing Aid Compatibility Test (101x101x1):** Interpolated grid: dx=0.5000 mm, dy=0.5000 mm

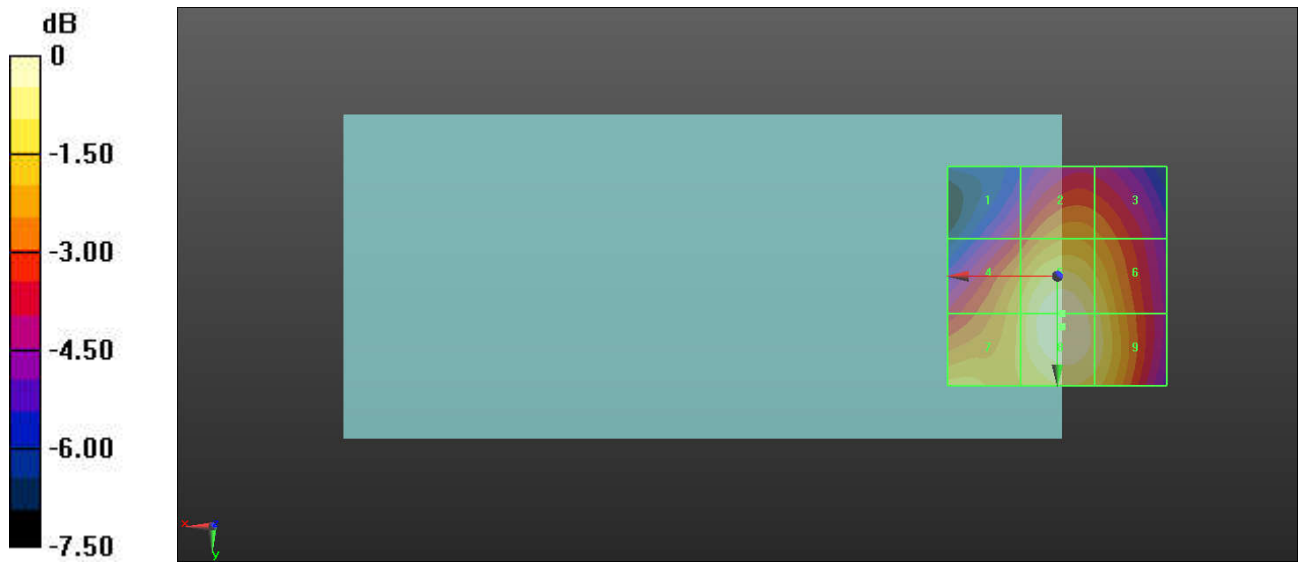
Device Reference Point: 0, 0, -6.3 mm  
 Reference Value = 41.39 V/m; Power Drift = -0.03 dB  
 Applied MIF = 0.12 dB  
 RF audio interference level = 30.27 dBV/m

**Emission category: M3**

MIF scaled E-field

Grid 1 <b>M4</b> <b>26.8 dBV/m</b>	Grid 2 <b>M4</b> <b>28.31 dBV/m</b>	Grid 3 <b>M4</b> <b>28.02 dBV/m</b>
Grid 4 <b>M4</b> <b>28.87 dBV/m</b>	Grid 5 <b>M3</b> <b>30.2 dBV/m</b>	Grid 6 <b>M4</b> <b>29.48 dBV/m</b>
Grid 7 <b>M4</b> <b>29.06 dBV/m</b>	Grid 8 <b>M3</b> <b>30.27 dBV/m</b>	Grid 9 <b>M4</b> <b>29.65 dBV/m</b>

Total = 30.27 dBV/m  
 E Category: M3  
 Location: -1, 11.5, 7.7 mm



0 dB = 32.63 V/m = 30.27 dBV/m

**14\_HAC\_RF\_WLAN2.4GHz\_802.11g\_6Mbps\_Ch6\_E**

Communication System: UID 10077 - CAB, IEEE 802.11g WiFi 2.4 GHz (DSSS/OFDM, 54 Mbps);  
 Frequency: 2437 MHz; Duty Cycle: 1:12.5777  
 Medium: Air Medium parameters used:  $\sigma = 0$  S/m,  $\epsilon_r = 1$ ;  $\rho = 0$  kg/m<sup>3</sup>  
 Ambient Temperature : 23.4 °C

DASY5 Configuration:

- Probe: EF3DV3 - SN4053; ConvF(1, 1, 1); Calibrated: 2021/4/29
- Sensor-Surface: (Fix Surface)
- Electronics: DAE4 Sn1386; Calibrated: 2021/1/13
- Phantom: HAC Test Arch with AMCC; Type: SD HAC P01 BA;
- Measurement SW: DASY52, Version 52.10 (3); SEMCAD X Version 14.6.13 (7474)

**Ch6/Hearing Aid Compatibility Test (101x101x1):** Interpolated grid: dx=0.5000 mm, dy=0.5000 mm

Device Reference Point: 0, 0, -6.3 mm  
 Reference Value = 44.13 V/m; Power Drift = 0.08 dB  
 Applied MIF = 0.12 dB  
 RF audio interference level = 30.82 dBV/m

**Emission category: M3**

MIF scaled E-field

Grid 1 <b>M4</b> <b>27.21 dBV/m</b>	Grid 2 <b>M4</b> <b>28.84 dBV/m</b>	Grid 3 <b>M4</b> <b>28.49 dBV/m</b>
Grid 4 <b>M4</b> <b>29.29 dBV/m</b>	Grid 5 <b>M3</b> <b>30.7 dBV/m</b>	Grid 6 <b>M3</b> <b>30.03 dBV/m</b>
Grid 7 <b>M4</b> <b>29.42 dBV/m</b>	Grid 8 <b>M3</b> <b>30.82 dBV/m</b>	Grid 9 <b>M3</b> <b>30.31 dBV/m</b>

Total = 30.82 dBV/m  
 E Category: M3  
 Location: -2.5, 13, 7.7 mm



0 dB = 34.74 V/m = 30.82 dBV/m

**15\_HAC\_RF\_WLAN2.4GHz\_802.11g 6Mbps\_Ch11\_E**

Communication System: UID 10077 - CAB, IEEE 802.11g WiFi 2.4 GHz (DSSS/OFDM, 54 Mbps);  
 Frequency: 2462 MHz; Duty Cycle: 1:12.5777  
 Medium: Air Medium parameters used:  $\sigma = 0$  S/m,  $\epsilon_r = 1$ ;  $\rho = 0$  kg/m<sup>3</sup>  
 Ambient Temperature : 23.4 °C

**DASY5 Configuration:**

- Probe: EF3DV3 - SN4053; ConvF(1, 1, 1); Calibrated: 2021/4/29
- Sensor-Surface: (Fix Surface)
- Electronics: DAE4 Sn1386; Calibrated: 2021/1/13
- Phantom: HAC Test Arch with AMCC; Type: SD HAC P01 BA;
- Measurement SW: DASY52, Version 52.10 (3); SEMCAD X Version 14.6.13 (7474)

**Ch11/Hearing Aid Compatibility Test (101x101x1):** Interpolated grid: dx=0.5000 mm, dy=0.5000 mm

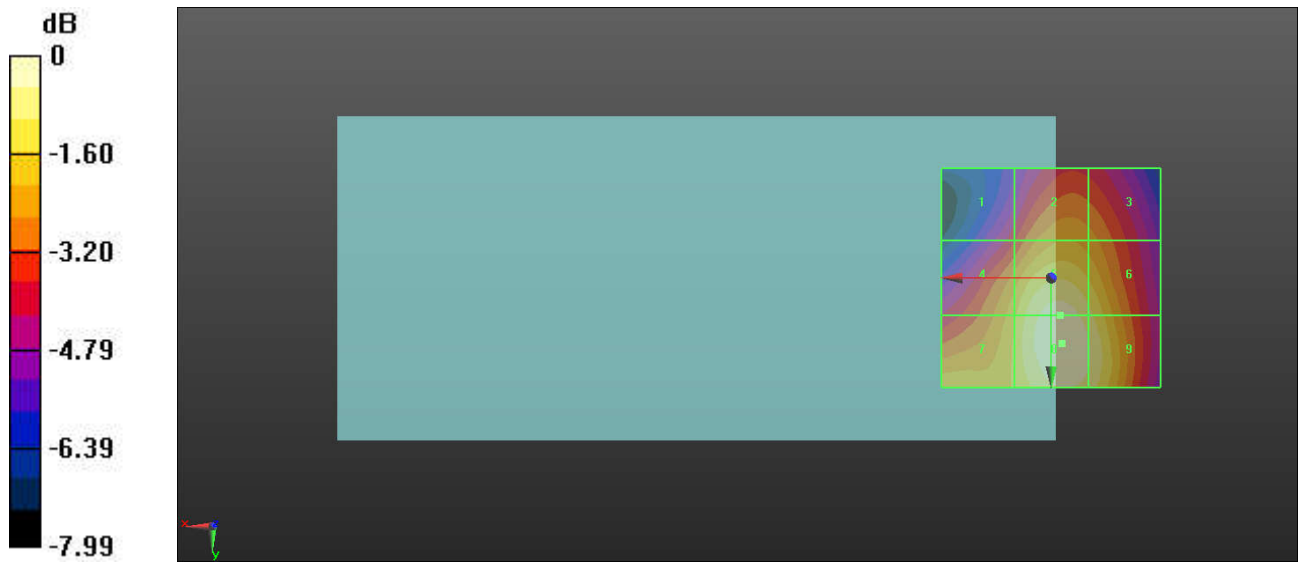
Device Reference Point: 0, 0, -6.3 mm  
 Reference Value = 41.24 V/m; Power Drift = -0.01 dB  
 Applied MIF = 0.12 dB  
 RF audio interference level = 30.46 dBV/m

**Emission category: M3**

MIF scaled E-field

Grid 1 <b>M4</b> <b>26.69 dBV/m</b>	Grid 2 <b>M4</b> <b>28.36 dBV/m</b>	Grid 3 <b>M4</b> <b>28.09 dBV/m</b>
Grid 4 <b>M4</b> <b>28.74 dBV/m</b>	Grid 5 <b>M3</b> <b>30.23 dBV/m</b>	Grid 6 <b>M4</b> <b>29.61 dBV/m</b>
Grid 7 <b>M4</b> <b>28.98 dBV/m</b>	Grid 8 <b>M3</b> <b>30.46 dBV/m</b>	Grid 9 <b>M3</b> <b>30.01 dBV/m</b>

Total = 30.46 dBV/m  
 E Category: M3  
 Location: -2.5, 15, 7.7 mm



0 dB = 33.36 V/m = 30.46 dBV/m

**16\_HAC\_RF\_WLAN5GHz\_802.11a 6Mbps\_Ch52\_E**

Communication System: UID 10069 - CAD, IEEE 802.11a/h WiFi 5 GHz (OFDM, 54 Mbps);  
 Frequency: 5260 MHz; Duty Cycle: 1:11.3789  
 Medium: Air Medium parameters used:  $\sigma = 0$  S/m,  $\epsilon_r = 1$ ;  $\rho = 0$  kg/m<sup>3</sup>  
 Ambient Temperature : 23.4 °C

DASY5 Configuration:

- Probe: EF3DV3 - SN4053; ConvF(1, 1, 1); Calibrated: 2021/4/29
- Sensor-Surface: (Fix Surface)
- Electronics: DAE4 Sn1386; Calibrated: 2021/1/13
- Phantom: HAC Test Arch with AMCC; Type: SD HAC P01 BA;
- Measurement SW: DASY52, Version 52.10 (3); SEMCAD X Version 14.6.13 (7474)

**Ch52/Hearing Aid Compatibility Test (101x101x1):** Interpolated grid: dx=0.5000 mm, dy=0.5000 mm

Device Reference Point: 0, 0, -6.3 mm  
 Reference Value = 35.67 V/m; Power Drift = 0.05 dB  
 Applied MIF = -3.15 dB  
 RF audio interference level = 26.38 dBV/m

**Emission category: M4**

MIF scaled E-field

Grid 1 <b>M4</b> <b>24.24 dBV/m</b>	Grid 2 <b>M4</b> <b>24.81 dBV/m</b>	Grid 3 <b>M4</b> <b>24.26 dBV/m</b>
Grid 4 <b>M4</b> <b>24.28 dBV/m</b>	Grid 5 <b>M4</b> <b>24.94 dBV/m</b>	Grid 6 <b>M4</b> <b>24.36 dBV/m</b>
Grid 7 <b>M4</b> <b>24.92 dBV/m</b>	Grid 8 <b>M4</b> <b>26.38 dBV/m</b>	Grid 9 <b>M4</b> <b>25.89 dBV/m</b>

Total = 26.38 dBV/m  
 E Category: M4  
 Location: -2, 21, 7.7 mm



0 dB = 20.85 V/m = 26.38 dBV/m



**17\_HAC\_RF\_WLAN5GHz\_802.11a 6Mbps\_Ch56\_E**

Communication System: UID 10069 - CAD, IEEE 802.11a/h WiFi 5 GHz (OFDM, 54 Mbps);  
 Frequency: 5280 MHz; Duty Cycle: 1:11.3789  
 Medium: Air Medium parameters used:  $\sigma = 0$  S/m,  $\epsilon_r = 1$ ;  $\rho = 0$  kg/m<sup>3</sup>  
 Ambient Temperature : 23.4 °C

DASY5 Configuration:

- Probe: EF3DV3 - SN4053; ConvF(1, 1, 1); Calibrated: 2021/4/29
- Sensor-Surface: (Fix Surface)
- Electronics: DAE4 Sn1386; Calibrated: 2021/1/13
- Phantom: HAC Test Arch with AMCC; Type: SD HAC P01 BA;
- Measurement SW: DASY52, Version 52.10 (3); SEMCAD X Version 14.6.13 (7474)

**Ch56/Hearing Aid Compatibility Test (101x101x1):** Interpolated grid: dx=0.5000 mm, dy=0.5000 mm

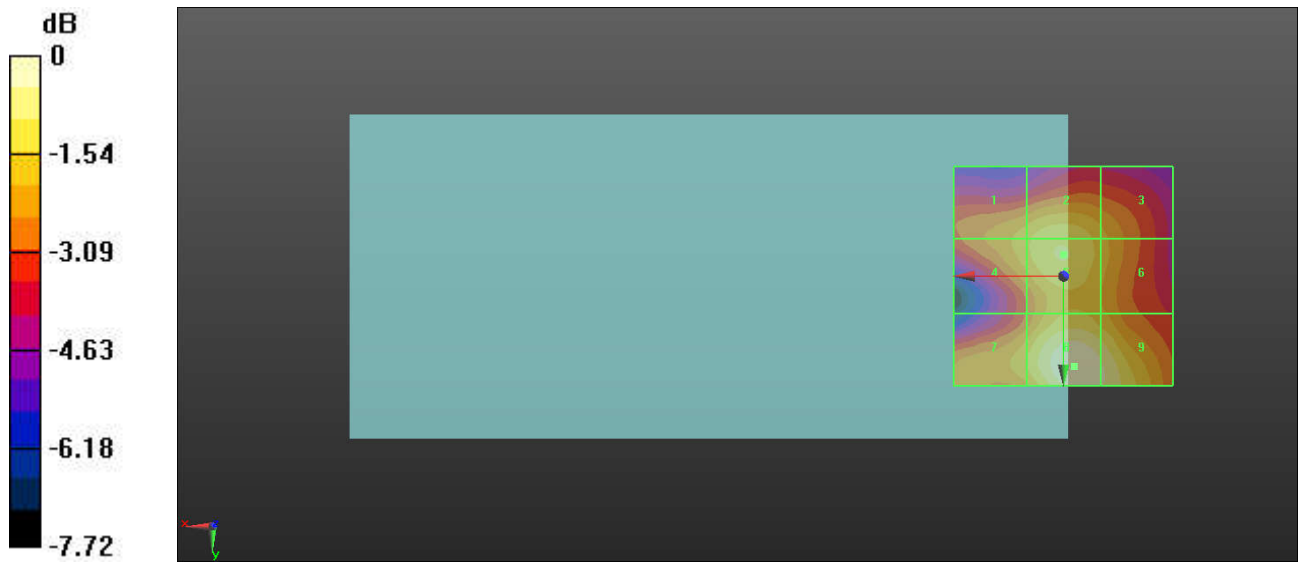
Device Reference Point: 0, 0, -6.3 mm  
 Reference Value = 34.30 V/m; Power Drift = 0.04 dB  
 Applied MIF = -3.15 dB  
 RF audio interference level = 25.76 dBV/m

**Emission category: M4**

MIF scaled E-field

Grid 1 <b>M4</b> <b>24.08 dBV/m</b>	Grid 2 <b>M4</b> <b>24.66 dBV/m</b>	Grid 3 <b>M4</b> <b>23.94 dBV/m</b>
Grid 4 <b>M4</b> <b>24.12 dBV/m</b>	Grid 5 <b>M4</b> <b>24.76 dBV/m</b>	Grid 6 <b>M4</b> <b>23.99 dBV/m</b>
Grid 7 <b>M4</b> <b>24.2 dBV/m</b>	Grid 8 <b>M4</b> <b>25.76 dBV/m</b>	Grid 9 <b>M4</b> <b>25.37 dBV/m</b>

Total = 25.76 dBV/m  
 E Category: M4  
 Location: -2.5, 20.5, 7.7 mm



**18\_HAC\_RF\_WLAN5GHz\_802.11a 6Mbps\_Ch60\_E**

Communication System: UID 10069 - CAD, IEEE 802.11a/h WiFi 5 GHz (OFDM, 54 Mbps);  
 Frequency: 5300 MHz; Duty Cycle: 1:11.3789  
 Medium: Air Medium parameters used:  $\sigma = 0$  S/m,  $\epsilon_r = 1$ ;  $\rho = 0$  kg/m<sup>3</sup>  
 Ambient Temperature : 23.4 °C

DASY5 Configuration:

- Probe: EF3DV3 - SN4053; ConvF(1, 1, 1); Calibrated: 2021/4/29
- Sensor-Surface: (Fix Surface)
- Electronics: DAE4 Sn1386; Calibrated: 2021/1/13
- Phantom: HAC Test Arch with AMCC; Type: SD HAC P01 BA;
- Measurement SW: DASY52, Version 52.10 (3); SEMCAD X Version 14.6.13 (7474)

**Ch60/Hearing Aid Compatibility Test (101x101x1):** Interpolated grid: dx=0.5000 mm, dy=0.5000 mm

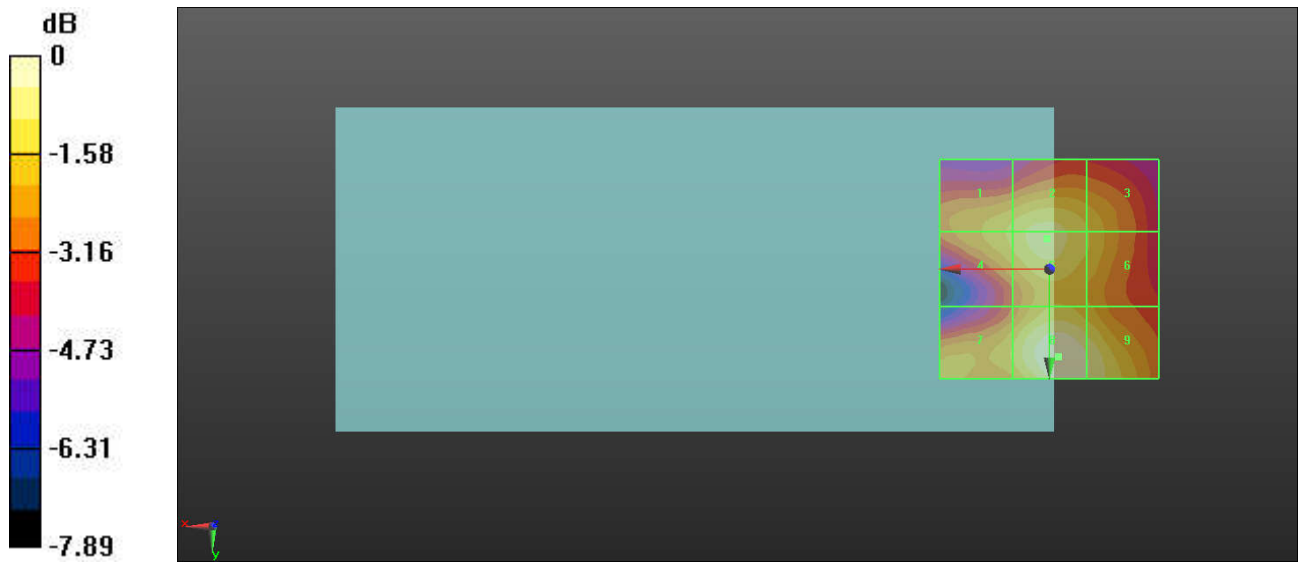
Device Reference Point: 0, 0, -6.3 mm  
 Reference Value = 34.93 V/m; Power Drift = 0.14 dB  
 Applied MIF = -3.15 dB  
 RF audio interference level = 25.81 dBV/m

**Emission category: M4**

MIF scaled E-field

Grid 1 <b>M4</b> <b>24.41 dBV/m</b>	Grid 2 <b>M4</b> <b>24.97 dBV/m</b>	Grid 3 <b>M4</b> <b>24.31 dBV/m</b>
Grid 4 <b>M4</b> <b>24.41 dBV/m</b>	Grid 5 <b>M4</b> <b>25.01 dBV/m</b>	Grid 6 <b>M4</b> <b>24.33 dBV/m</b>
Grid 7 <b>M4</b> <b>24.31 dBV/m</b>	Grid 8 <b>M4</b> <b>25.81 dBV/m</b>	Grid 9 <b>M4</b> <b>25.36 dBV/m</b>

Total = 25.81 dBV/m  
 E Category: M4  
 Location: -2, 20, 7.7 mm



0 dB = 19.53 V/m = 25.81 dBV/m

**19\_HAC\_RF\_WLAN5GHz\_802.11a 6Mbps\_Ch64\_E**

Communication System: UID 10069 - CAD, IEEE 802.11a/h WiFi 5 GHz (OFDM, 54 Mbps);  
 Frequency: 5320 MHz; Duty Cycle: 1:11.3789  
 Medium: Air Medium parameters used:  $\sigma = 0$  S/m,  $\epsilon_r = 1$ ;  $\rho = 0$  kg/m<sup>3</sup>  
 Ambient Temperature : 23.4 °C

DASY5 Configuration:

- Probe: EF3DV3 - SN4053; ConvF(1, 1, 1); Calibrated: 2021/4/29
- Sensor-Surface: (Fix Surface)
- Electronics: DAE4 Sn1386; Calibrated: 2021/1/13
- Phantom: HAC Test Arch with AMCC; Type: SD HAC P01 BA;
- Measurement SW: DASY52, Version 52.10 (3); SEMCAD X Version 14.6.13 (7474)

**Ch64/Hearing Aid Compatibility Test (101x101x1):** Interpolated grid: dx=0.5000 mm, dy=0.5000 mm

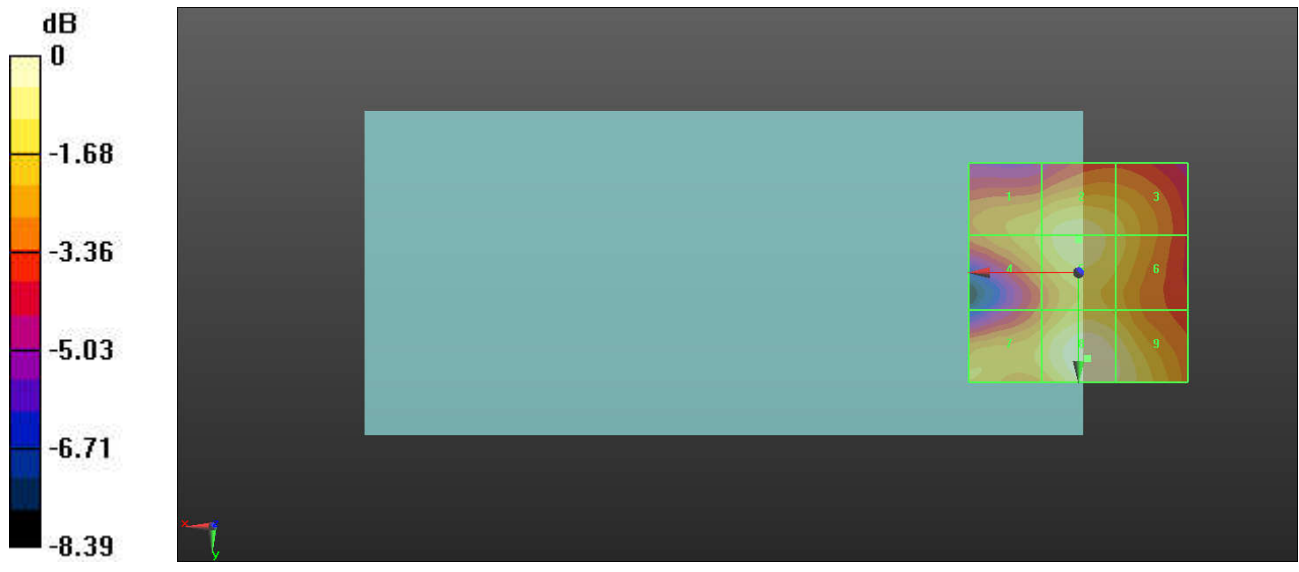
Device Reference Point: 0, 0, -6.3 mm  
 Reference Value = 34.36 V/m; Power Drift = -0.01 dB  
 Applied MIF = -3.15 dB  
 RF audio interference level = 25.33 dBV/m

**Emission category: M4**

MIF scaled E-field

Grid 1 <b>M4</b> <b>23.86 dBV/m</b>	Grid 2 <b>M4</b> <b>24.59 dBV/m</b>	Grid 3 <b>M4</b> <b>23.95 dBV/m</b>
Grid 4 <b>M4</b> <b>23.86 dBV/m</b>	Grid 5 <b>M4</b> <b>24.6 dBV/m</b>	Grid 6 <b>M4</b> <b>23.96 dBV/m</b>
Grid 7 <b>M4</b> <b>23.88 dBV/m</b>	Grid 8 <b>M4</b> <b>25.33 dBV/m</b>	Grid 9 <b>M4</b> <b>24.9 dBV/m</b>

Total = 25.33 dBV/m  
 E Category: M4  
 Location: -2, 19.5, 7.7 mm



0 dB = 18.46 V/m = 25.32 dBV/m

**20\_HAC\_RF\_WLAN5GHz\_802.11a 6Mbps\_Ch100\_E**

Communication System: UID 10069 - CAD, IEEE 802.11a/h WiFi 5 GHz (OFDM, 54 Mbps);  
 Frequency: 5500 MHz; Duty Cycle: 1:11.3789  
 Medium: Air Medium parameters used:  $\sigma = 0$  S/m,  $\epsilon_r = 1$ ;  $\rho = 0$  kg/m<sup>3</sup>  
 Ambient Temperature : 23.4 °C

**DASY5 Configuration:**

- Probe: EF3DV3 - SN4053; ConvF(1, 1, 1); Calibrated: 2021/4/29
- Sensor-Surface: (Fix Surface)
- Electronics: DAE4 Sn1386; Calibrated: 2021/1/13
- Phantom: HAC Test Arch with AMCC; Type: SD HAC P01 BA;
- Measurement SW: DASY52, Version 52.10 (3); SEMCAD X Version 14.6.13 (7474)

**Ch100/Hearing Aid Compatibility Test (101x101x1):** Interpolated grid: dx=0.5000 mm, dy=0.5000 mm

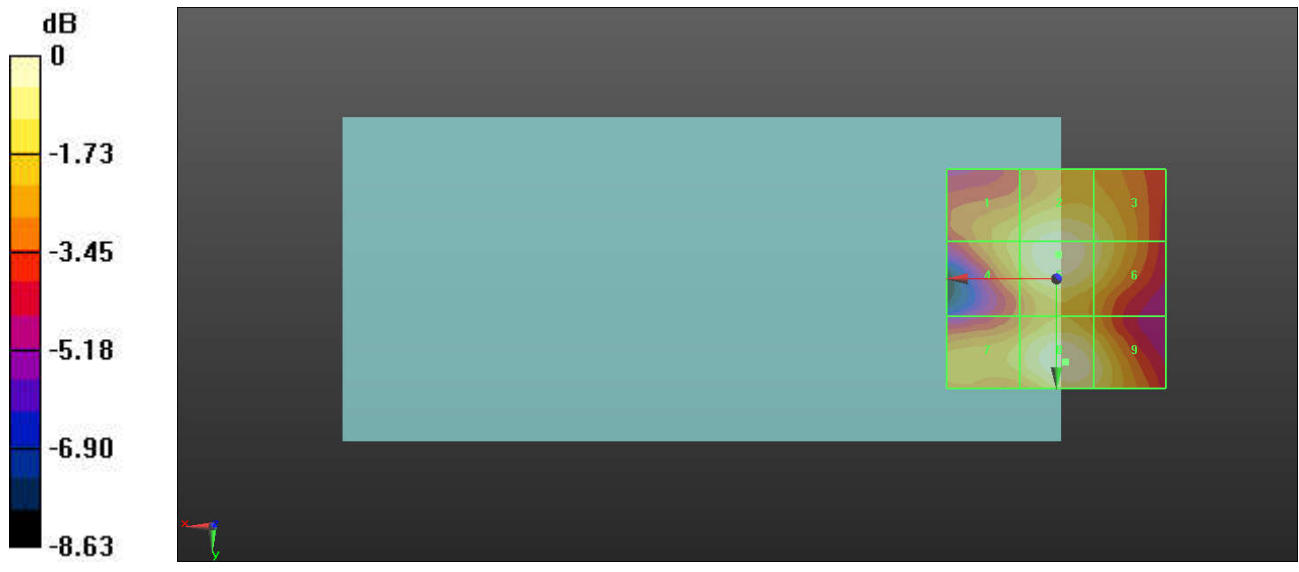
Device Reference Point: 0, 0, -6.3 mm  
 Reference Value = 35.18 V/m; Power Drift = -0.09 dB  
 Applied MIF = -3.15 dB  
 RF audio interference level = 24.25 dBV/m

**Emission category: M4**

MIF scaled E-field

<b>Grid 1 M4</b> <b>23.04 dBV/m</b>	<b>Grid 2 M4</b> <b>23.98 dBV/m</b>	<b>Grid 3 M4</b> <b>23.34 dBV/m</b>
<b>Grid 4 M4</b> <b>23.11 dBV/m</b>	<b>Grid 5 M4</b> <b>24.16 dBV/m</b>	<b>Grid 6 M4</b> <b>23.41 dBV/m</b>
<b>Grid 7 M4</b> <b>22.89 dBV/m</b>	<b>Grid 8 M4</b> <b>24.25 dBV/m</b>	<b>Grid 9 M4</b> <b>23.52 dBV/m</b>

Total = 24.25 dBV/m  
 E Category: M4  
 Location: -2, 19, 7.7 mm



0 dB = 16.32 V/m = 24.25 dBV/m



**21\_HAC\_RF\_WLAN5GHz\_802.11a 6Mbps\_Ch116\_E**

Communication System: UID 10069 - CAD, IEEE 802.11a/h WiFi 5 GHz (OFDM, 54 Mbps);  
 Frequency: 5580 MHz; Duty Cycle: 1:11.3789  
 Medium: Air Medium parameters used:  $\sigma = 0$  S/m,  $\epsilon_r = 1$ ;  $\rho = 0$  kg/m<sup>3</sup>  
 Ambient Temperature : 23.4 °C

DASY5 Configuration:

- Probe: EF3DV3 - SN4053; ConvF(1, 1, 1); Calibrated: 2021/4/29
- Sensor-Surface: (Fix Surface)
- Electronics: DAE4 Sn1386; Calibrated: 2021/1/13
- Phantom: HAC Test Arch with AMCC; Type: SD HAC P01 BA;
- Measurement SW: DASY52, Version 52.10 (3); SEMCAD X Version 14.6.13 (7474)

**Ch116/Hearing Aid Compatibility Test (101x101x1):** Interpolated grid: dx=0.5000 mm, dy=0.5000 mm

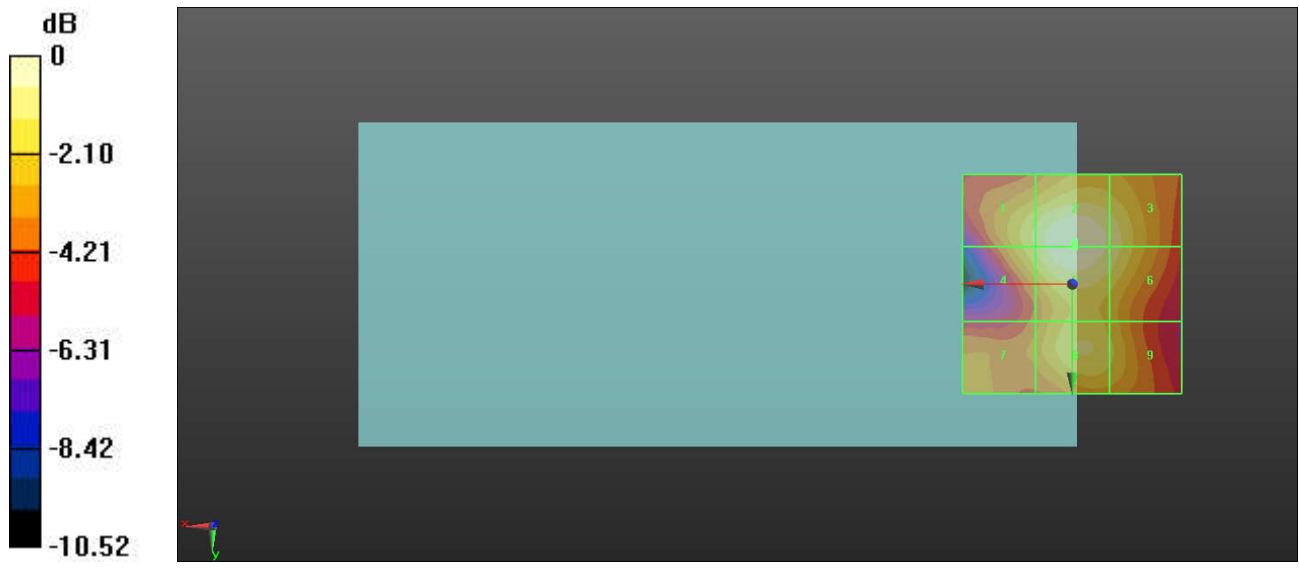
Device Reference Point: 0, 0, -6.3 mm  
 Reference Value = 36.42 V/m; Power Drift = 0.01 dB  
 Applied MIF = -3.15 dB  
 RF audio interference level = 25.49 dBV/m

**Emission category: M4**

MIF scaled E-field

Grid 1 <b>M4</b> <b>24.3 dBV/m</b>	Grid 2 <b>M4</b> <b>25.49 dBV/m</b>	Grid 3 <b>M4</b> <b>24.66 dBV/m</b>
Grid 4 <b>M4</b> <b>24.2 dBV/m</b>	Grid 5 <b>M4</b> <b>25.47 dBV/m</b>	Grid 6 <b>M4</b> <b>24.63 dBV/m</b>
Grid 7 <b>M4</b> <b>22.68 dBV/m</b>	Grid 8 <b>M4</b> <b>24.18 dBV/m</b>	Grid 9 <b>M4</b> <b>23.59 dBV/m</b>

Total = 25.49 dBV/m  
 E Category: M4  
 Location: -0.5, -9.5, 7.7 mm



0 dB = 18.82 V/m = 25.49 dBV/m

**22\_HAC\_RF\_WLAN5GHz\_802.11a 6Mbps\_Ch132\_E**

Communication System: UID 10069 - CAD, IEEE 802.11a/h WiFi 5 GHz (OFDM, 54 Mbps);  
 Frequency: 5660 MHz; Duty Cycle: 1:11.3789  
 Medium: Air Medium parameters used:  $\sigma = 0$  S/m,  $\epsilon_r = 1$ ;  $\rho = 0$  kg/m<sup>3</sup>  
 Ambient Temperature : 23.4 °C

**DASY5 Configuration:**

- Probe: EF3DV3 - SN4053; ConvF(1, 1, 1); Calibrated: 2021/4/29
- Sensor-Surface: (Fix Surface)
- Electronics: DAE4 Sn1386; Calibrated: 2021/1/13
- Phantom: HAC Test Arch with AMCC; Type: SD HAC P01 BA;
- Measurement SW: DASY52, Version 52.10 (3); SEMCAD X Version 14.6.13 (7474)

**Ch132/Hearing Aid Compatibility Test (101x101x1):** Interpolated grid: dx=0.5000 mm, dy=0.5000 mm

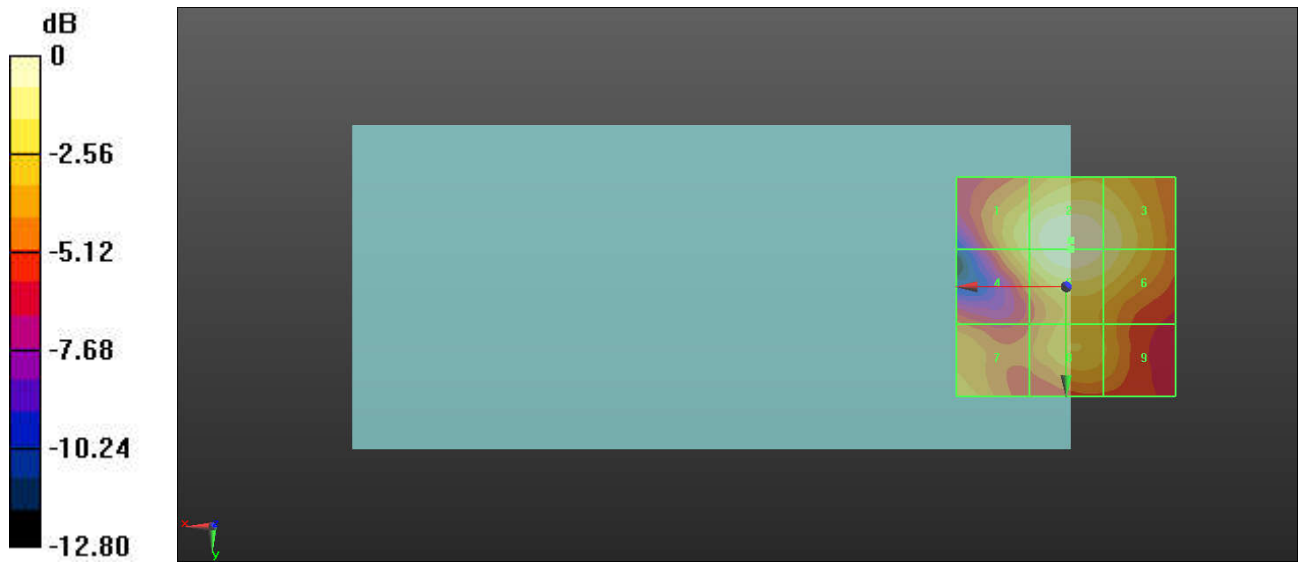
Device Reference Point: 0, 0, -6.3 mm  
 Reference Value = 32.83 V/m; Power Drift = -0.05 dB  
 Applied MIF = -3.15 dB  
 RF audio interference level = 24.93 dBV/m

**Emission category: M4**

MIF scaled E-field

<b>Grid 1 M4</b> <b>23.47 dBV/m</b>	<b>Grid 2 M4</b> <b>24.93 dBV/m</b>	<b>Grid 3 M4</b> <b>24.16 dBV/m</b>
<b>Grid 4 M4</b> <b>23.22 dBV/m</b>	<b>Grid 5 M4</b> <b>24.84 dBV/m</b>	<b>Grid 6 M4</b> <b>24.07 dBV/m</b>
<b>Grid 7 M4</b> <b>22.2 dBV/m</b>	<b>Grid 8 M4</b> <b>22.43 dBV/m</b>	<b>Grid 9 M4</b> <b>21.68 dBV/m</b>

Total = 24.93 dBV/m  
 E Category: M4  
 Location: -1, -10.5, 7.7 mm



0 dB = 17.64 V/m = 24.93 dBV/m

**23\_HAC\_RF\_WLAN5GHz\_802.11a 6Mbps\_Ch140\_E**

Communication System: UID 10069 - CAD, IEEE 802.11a/h WiFi 5 GHz (OFDM, 54 Mbps);  
 Frequency: 5700 MHz; Duty Cycle: 1:11.3789  
 Medium: Air Medium parameters used:  $\sigma = 0$  S/m,  $\epsilon_r = 1$ ;  $\rho = 0$  kg/m<sup>3</sup>  
 Ambient Temperature : 23.4 °C

DASY5 Configuration:

- Probe: EF3DV3 - SN4053; ConvF(1, 1, 1); Calibrated: 2021/4/29
- Sensor-Surface: (Fix Surface)
- Electronics: DAE4 Sn1386; Calibrated: 2021/1/13
- Phantom: HAC Test Arch with AMCC; Type: SD HAC P01 BA;
- Measurement SW: DASY52, Version 52.10 (3); SEMCAD X Version 14.6.13 (7474)

**Ch140/Hearing Aid Compatibility Test (101x101x1):** Interpolated grid: dx=0.5000 mm, dy=0.5000 mm

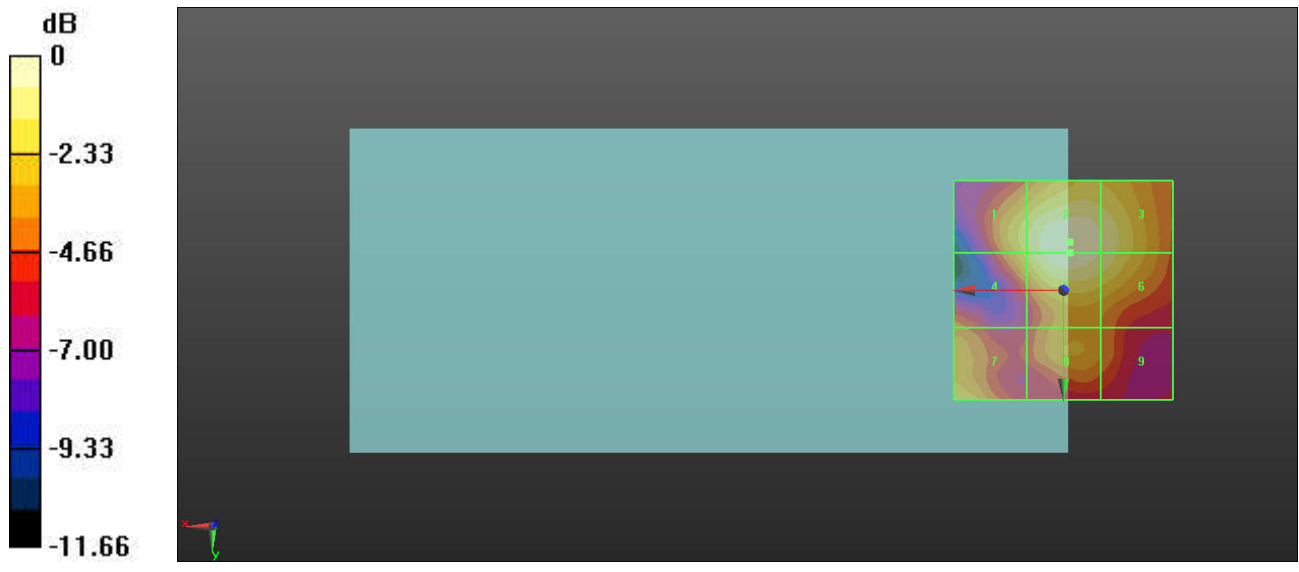
Device Reference Point: 0, 0, -6.3 mm  
 Reference Value = 23.47 V/m; Power Drift = 0.04 dB  
 Applied MIF = -3.15 dB  
 RF audio interference level = 22.23 dBV/m

**Emission category: M4**

MIF scaled E-field

<b>Grid 1 M4</b> <b>20.58 dBV/m</b>	<b>Grid 2 M4</b> <b>22.23 dBV/m</b>	<b>Grid 3 M4</b> <b>21.54 dBV/m</b>
<b>Grid 4 M4</b> <b>20.23 dBV/m</b>	<b>Grid 5 M4</b> <b>22.11 dBV/m</b>	<b>Grid 6 M4</b> <b>21.42 dBV/m</b>
<b>Grid 7 M4</b> <b>20.04 dBV/m</b>	<b>Grid 8 M4</b> <b>19.26 dBV/m</b>	<b>Grid 9 M4</b> <b>18.43 dBV/m</b>

Total = 22.23 dBV/m  
 E Category: M4  
 Location: -1.5, -11, 7.7 mm



0 dB = 12.93 V/m = 22.23 dBV/m



## ***Appendix C. DASY Calibration Certificate***

The DASY calibration certificates are shown as follows.



Accredited by the Swiss Accreditation Service (SAS)  
The Swiss Accreditation Service is one of the signatories to the EA  
Multilateral Agreement for the recognition of calibration certificates

Accreditation No.: **SCS 0108**

Client **Sporton**

Certificate No: **CD835V3-1045\_Sep18**

## CALIBRATION CERTIFICATE

Object **CD835V3 - SN: 1045**

Calibration procedure(s) **QA CAL-20.v6  
Calibration procedure for dipoles in air**

Calibration date: **September 19, 2018**

This calibration certificate documents the traceability to national standards, which realize the physical units of measurements (SI).  
The measurements and the uncertainties with confidence probability are given on the following pages and are part of the certificate.

All calibrations have been conducted in the closed laboratory facility: environment temperature (22 ± 3)°C and humidity < 70%.

**Calibration Equipment used (M&TE critical for calibration)**

Primary Standards	ID #	Cal Date (Certificate No.)	Scheduled Calibration
Power meter NRP	SN: 104778	04-Apr-18 (No. 217-02672/02673)	Apr-19
Power sensor NRP-Z91	SN: 103244	04-Apr-18 (No. 217-02672)	Apr-19
Power sensor NRP-Z91	SN: 103245	04-Apr-18 (No. 217-02673)	Apr-19
Reference 20 dB Attenuator	SN: 5058 (20k)	04-Apr-18 (No. 217-02682)	Apr-19
Type-N mismatch combination	SN: 5047.2 / 06327	04-Apr-18 (No. 217-02683)	Apr-19
Probe EF3DV3	SN: 4013	05-Mar-18 (No. EF3-4013_Mar18)	Mar-19
DAE4	SN: 781	17-Jan-18 (No. DAE4-781_Jan18)	Jan-19

Secondary Standards	ID #	Check Date (in house)	Scheduled Check
Power meter Agilent 4419B	SN: GB42420191	09-Oct-09 (in house check Oct-17)	In house check: Oct-20
Power sensor HP E4412A	SN: US38485102	05-Jan-10 (in house check Oct-17)	In house check: Oct-20
Power sensor HP 8482A	SN: US37295597	09-Oct-09 (in house check Oct-17)	In house check: Oct-20
RF generator R&S SMT-06	SN: 832283/011	27-Aug-12 (in house check Oct-17)	In house check: Oct-20
Network Analyzer Agilent E8358A	SN: US41080477	31-Mar-14 (in house check Oct-17)	In house check: Oct-18

	Name	Function	Signature
Calibrated by:	Leif Klysner	Laboratory Technician	
Approved by:	Katja Pokovic	Technical Manager	

Issued: September 24, 2018

This calibration certificate shall not be reproduced except in full without written approval of the laboratory.





Accredited by the Swiss Accreditation Service (SAS)  
**The Swiss Accreditation Service is one of the signatories to the EA  
Multilateral Agreement for the recognition of calibration certificates**

Accreditation No.: **SCS 0108**

## References

- [1] ANSI-C63.19-2011  
American National Standard, Methods of Measurement of Compatibility between Wireless Communications Devices and Hearing Aids.

## Methods Applied and Interpretation of Parameters:

- *Coordinate System:* y-axis is in the direction of the dipole arms. z-axis is from the basis of the antenna (mounted on the table) towards its feed point between the two dipole arms. x-axis is normal to the other axes. In coincidence with the standards [1], the measurement planes (probe sensor center) are selected to be at a distance of 15 mm above the top metal edge of the dipole arms.
- *Measurement Conditions:* Further details are available from the hardcopies at the end of the certificate. All figures stated in the certificate are valid at the frequency indicated. The forward power to the dipole connector is set with a calibrated power meter connected and monitored with an auxiliary power meter connected to a directional coupler. While the dipole under test is connected, the forward power is adjusted to the same level.
- *Antenna Positioning:* The dipole is mounted on a HAC Test Arch phantom using the matching dipole positioner with the arms horizontal and the feeding cable coming from the floor. The measurements are performed in a shielded room with absorbers around the setup to reduce the reflections. It is verified before the mounting of the dipole under the Test Arch phantom, that its arms are perfectly in a line. It is installed on the HAC dipole positioner with its arms parallel below the dielectric reference wire and able to move elastically in vertical direction without changing its relative position to the top center of the Test Arch phantom. The vertical distance to the probe is adjusted after dipole mounting with a DASY5 Surface Check job. Before the measurement, the distance between phantom surface and probe tip is verified. The proper measurement distance is selected by choosing the matching section of the HAC Test Arch phantom with the proper device reference point (upper surface of the dipole) and the matching grid reference point (tip of the probe) considering the probe sensor offset. The vertical distance to the probe is essential for the accuracy.
- *Feed Point Impedance and Return Loss:* These parameters are measured using a HP 8753E Vector Network Analyzer. The impedance is specified at the SMA connector of the dipole. The influence of reflections was eliminated by applying the averaging function while moving the dipole in the air, at least 70cm away from any obstacles.
- *E-field distribution:* E field is measured in the x-y-plane with an isotropic ER3D-field probe with 100 mW forward power to the antenna feed point. In accordance with [1], the scan area is 20mm wide, its length exceeds the dipole arm length (180 or 90mm). The sensor center is 15 mm (in z) above the metal top of the dipole arms. Two 3D maxima are available near the end of the dipole arms. Assuming the dipole arms are perfectly in one line, the average of these two maxima (in subgrid 2 and subgrid 8) is determined to compensate for any non-parallelity to the measurement plane as well as the sensor displacement. The E-field value stated as calibration value represents the maximum of the interpolated 3D-E-field, in the plane above the dipole surface.

The reported uncertainty of measurement is stated as the standard uncertainty of measurement multiplied by the coverage factor  $k=2$ , which for a normal distribution corresponds to a coverage probability of approximately 95%.

## Measurement Conditions

DASY system configuration, as far as not given on page 1.

<b>DASY Version</b>	DASY5	V52.10.1
<b>Phantom</b>	HAC Test Arch	
<b>Distance Dipole Top - Probe Center</b>	15 mm	
<b>Scan resolution</b>	dx, dy = 5 mm	
<b>Frequency</b>	835 MHz $\pm$ 1 MHz	
<b>Input power drift</b>	< 0.05 dB	

## Maximum Field values at 835 MHz

<b>E-field 15 mm above dipole surface</b>	condition	<b>Interpolated maximum</b>
Maximum measured above high end	100 mW input power	109.3 V/m = 40.77 dBV/m
Maximum measured above low end	100 mW input power	108.2 V/m = 40.68 dBV/m
Averaged maximum above arm	100 mW input power	<b>108.8 V/m <math>\pm</math> 12.8 % (k=2)</b>

## Appendix (Additional assessments outside the scope of SCS 0108)

### Antenna Parameters

<b>Frequency</b>	<b>Return Loss</b>	<b>Impedance</b>
800 MHz	16.0 dB	40.8 $\Omega$ - 11.3 j $\Omega$
835 MHz	32.3 dB	49.4 $\Omega$ + 2.3 j $\Omega$
880 MHz	18.1 dB	57.9 $\Omega$ - 11.0 j $\Omega$
900 MHz	18.2 dB	48.3 $\Omega$ - 12.1 j $\Omega$
945 MHz	20.5 dB	49.1 $\Omega$ + 9.3 j $\Omega$

### 3.2 Antenna Design and Handling

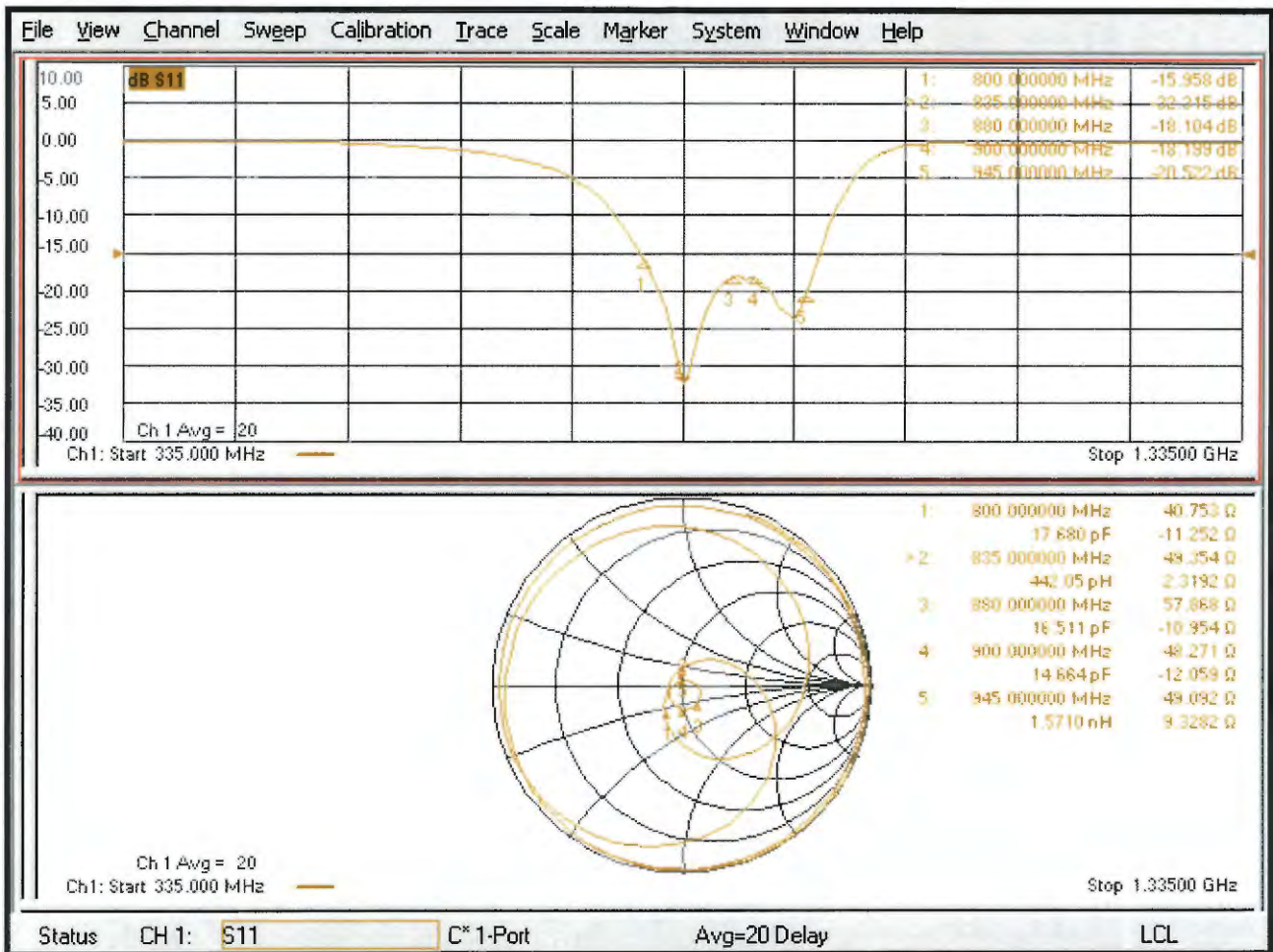
The calibration dipole has a symmetric geometry with a built-in two stub matching network, which leads to the enhanced bandwidth.

The dipole is built of standard semirigid coaxial cable. The internal matching line is open ended. The antenna is therefore open for DC signals.

Do not apply force to dipole arms, as they are liable to bend. The soldered connections near the feedpoint may be damaged. After excessive mechanical stress or overheating, check the impedance characteristics to ensure that the internal matching network is not affected.

After long term use with 40W radiated power, only a slight warming of the dipole near the feedpoint can be measured.

# Impedance Measurement Plot



# DASY5 E-field Result

Date: 19.09.2018

Test Laboratory: SPEAG Lab2

**DUT: HAC-Dipole 835 MHz; Type: CD835V3; Serial: CD835V3 - SN: 1045**

Communication System: UID 0 - CW ; Frequency: 835 MHz

Medium parameters used:  $\sigma = 0$  S/m,  $\epsilon_r = 1$ ;  $\rho = 0$  kg/m<sup>3</sup>

Phantom section: RF Section

Measurement Standard: DASY5 (IEEE/IEC/ANSI C63.19-2011)

DASY52 Configuration:

- Probe: EF3DV3 - SN4013; ConvF(1, 1, 1) @ 835 MHz; Calibrated: 05.03.2018
- Sensor-Surface: (Fix Surface)
- Electronics: DAE4 Sn781; Calibrated: 17.01.2018
- Phantom: HAC Test Arch with AMCC; Type: SD HAC P01 BA; Serial: 1070
- DASY52 52.10.1(1476); SEMCAD X 14.6.11(7439)

**Dipole E-Field measurement @ 835MHz/E-Scan - 835MHz d=15mm/Hearing Aid Compatibility Test (41x361x1):**

Interpolated grid: dx=0.5000 mm, dy=0.5000 mm

Device Reference Point: 0, 0, -6.3 mm

Reference Value = 132.0 V/m; Power Drift = 0.00 dB

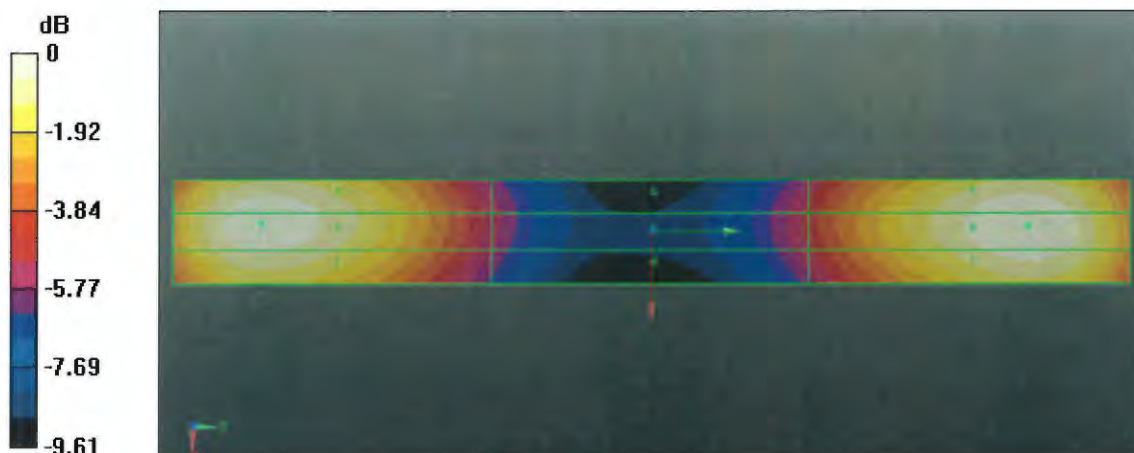
Applied MIF = 0.00 dB

RF audio interference level = 40.77 dBV/m

**Emission category: M3**

MIF scaled E-field

Grid 1 M3 40.25 dBV/m	Grid 2 M3 40.68 dBV/m	Grid 3 M3 40.63 dBV/m
Grid 4 M4 35.68 dBV/m	Grid 5 M4 35.97 dBV/m	Grid 6 M4 35.93 dBV/m
Grid 7 M3 40.47 dBV/m	Grid 8 M3 40.77 dBV/m	Grid 9 M3 40.67 dBV/m



0 dB = 109.3 V/m = 40.77 dBV/m



---

### CD835V3, serial no. 1045 Extended Dipole Calibrations

Referring to KDB 450824, if dipoles are verified in return loss (<-20dB, within 20% of prior calibration), and in impedance (within 5 ohm of prior calibration), the annual calibration is not necessary and the calibration interval can be extended.

#### <Justification of the extended calibration>

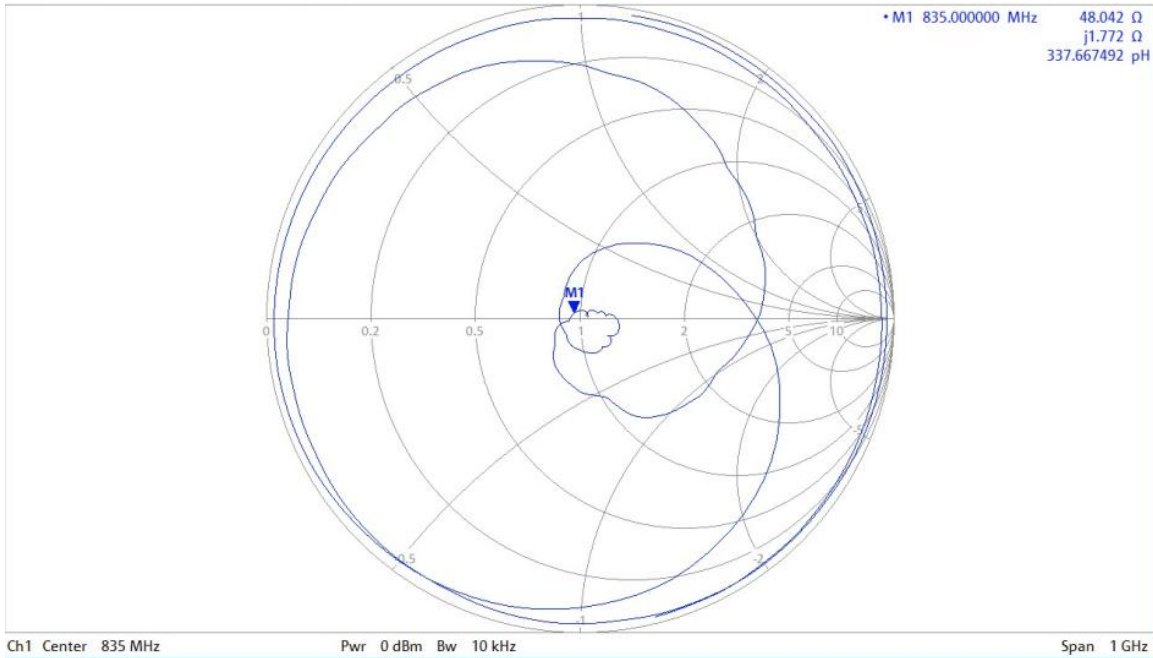
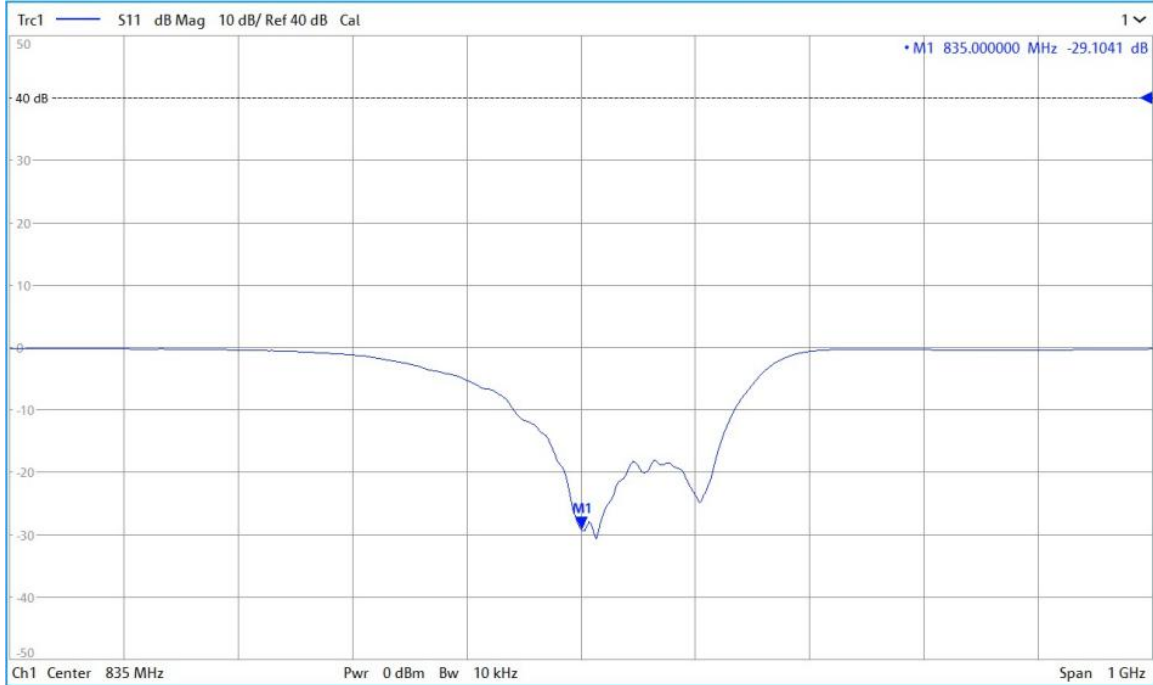
CD835V3 – serial no. 1045						
835MHZ						
Date of Measurement	Return-Loss (dB)	Delta (%)	Real Impedance (ohm)	Delta (ohm)	Imaginary Impedance (ohm)	Delta (ohm)
09.19.2018	-32.3		49.4		2.3	
09.18.2019	-29.104	-9.89	48.042	-1.358	1.772	-0.528
09.17.2020	-33.129	2.57	50.259	-0.859	0.57221	1.72779

The return loss is <-20dB, within 20% of prior calibration; the impedance is within 5 ohm of prior calibration. Therefore the verification result should support extended calibration.



<Dipole Verification Data> - D835 V3, serial no. 1045 (Data of Measurement : 09.18.2019)

835 MHz - Head



**SPORTON INTERNATIONAL INC.**

TEL : 886-3-327-3456

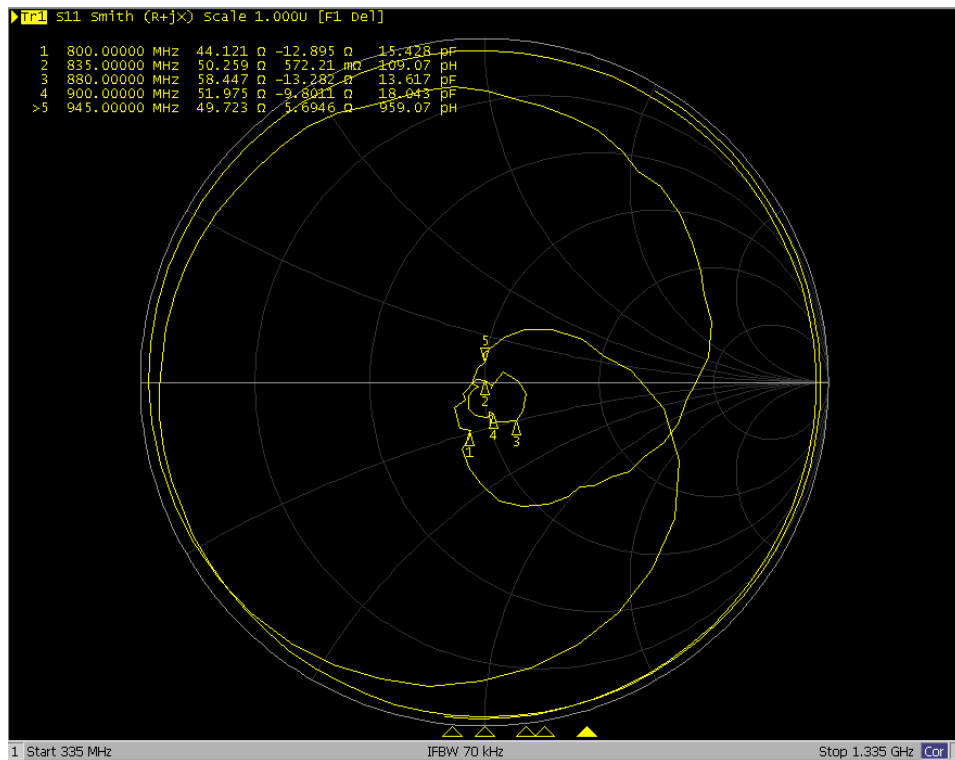
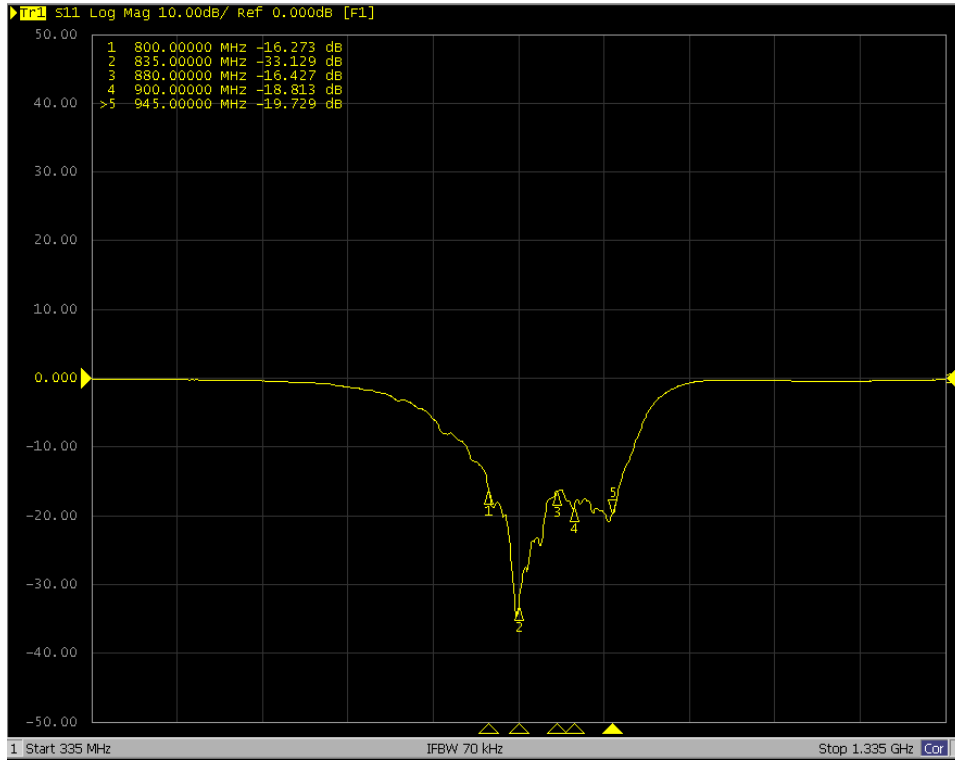
FAX : 886-3-328-4978





<Dipole Verification Data> - CD835 V3, serial no. 1045 (Data of Measurement : 9.17.2020)

835 MHz - Head





Accredited by the Swiss Accreditation Service (SAS)  
The Swiss Accreditation Service is one of the signatories to the EA  
Multilateral Agreement for the recognition of calibration certificates

Accreditation No.: **SCS 0108**

Client **Sporton**

Certificate No: **CD1880V3-1038\_Sep18**

## CALIBRATION CERTIFICATE

Object **CD1880V3 - SN: 1038**

Calibration procedure(s) **QA CAL-20.v6  
Calibration procedure for dipoles in air**

Calibration date: **September 19, 2018**

This calibration certificate documents the traceability to national standards, which realize the physical units of measurements (SI).  
The measurements and the uncertainties with confidence probability are given on the following pages and are part of the certificate.

All calibrations have been conducted in the closed laboratory facility: environment temperature (22 ± 3)°C and humidity < 70%.

Calibration Equipment used (M&TE critical for calibration)

Primary Standards	ID #	Cal Date (Certificate No.)	Scheduled Calibration
Power meter NRP	SN: 104778	04-Apr-18 (No. 217-02672/02673)	Apr-19
Power sensor NRP-Z91	SN: 103244	04-Apr-18 (No. 217-02672)	Apr-19
Power sensor NRP-Z91	SN: 103245	04-Apr-18 (No. 217-02673)	Apr-19
Reference 20 dB Attenuator	SN: 5058 (20k)	04-Apr-18 (No. 217-02682)	Apr-19
Type-N mismatch combination	SN: 5047.2 / 06327	04-Apr-18 (No. 217-02683)	Apr-19
Probe EF3DV3	SN: 4013	05-Mar-18 (No. EF3-4013_Mar18)	Mar-19
DAE4	SN: 781	17-Jan-18 (No. DAE4-781_Jan18)	Jan-19

Secondary Standards	ID #	Check Date (in house)	Scheduled Check
Power meter Agilent 4419B	SN: GB42420191	09-Oct-09 (in house check Oct-17)	In house check: Oct-20
Power sensor HP E4412A	SN: US38485102	05-Jan-10 (in house check Oct-17)	In house check: Oct-20
Power sensor HP 8482A	SN: US37295597	09-Oct-09 (in house check Oct-17)	In house check: Oct-20
RF generator R&S SMT-06	SN: 832283/011	27-Aug-12 (in house check Oct-17)	In house check: Oct-20
Network Analyzer HP 8358A	SN: US41080477	31-Mar-14 (in house check Oct-17)	In house check: Oct-18

	Name	Function	Signature
Calibrated by:	Leif Klysner	Laboratory Technician	
Approved by:	Katja Pokovic	Technical Manager	

Issued: September 24, 2018

This calibration certificate shall not be reproduced except in full without written approval of the laboratory.





Accredited by the Swiss Accreditation Service (SAS)  
The Swiss Accreditation Service is one of the signatories to the EA  
Multilateral Agreement for the recognition of calibration certificates

Accreditation No.: **SCS 0108**

## References

- [1] ANSI-C63.19-2011  
American National Standard, Methods of Measurement of Compatibility between Wireless Communications Devices and Hearing Aids.

## Methods Applied and Interpretation of Parameters:

- *Coordinate System:* y-axis is in the direction of the dipole arms. z-axis is from the basis of the antenna (mounted on the table) towards its feed point between the two dipole arms. x-axis is normal to the other axes. In coincidence with the standards [1], the measurement planes (probe sensor center) are selected to be at a distance of 15 mm above the top metal edge of the dipole arms.
- *Measurement Conditions:* Further details are available from the hardcopies at the end of the certificate. All figures stated in the certificate are valid at the frequency indicated. The forward power to the dipole connector is set with a calibrated power meter connected and monitored with an auxiliary power meter connected to a directional coupler. While the dipole under test is connected, the forward power is adjusted to the same level.
- *Antenna Positioning:* The dipole is mounted on a HAC Test Arch phantom using the matching dipole positioner with the arms horizontal and the feeding cable coming from the floor. The measurements are performed in a shielded room with absorbers around the setup to reduce the reflections. It is verified before the mounting of the dipole under the Test Arch phantom, that its arms are perfectly in a line. It is installed on the HAC dipole positioner with its arms parallel below the dielectric reference wire and able to move elastically in vertical direction without changing its relative position to the top center of the Test Arch phantom. The vertical distance to the probe is adjusted after dipole mounting with a DASY5 Surface Check job. Before the measurement, the distance between phantom surface and probe tip is verified. The proper measurement distance is selected by choosing the matching section of the HAC Test Arch phantom with the proper device reference point (upper surface of the dipole) and the matching grid reference point (tip of the probe) considering the probe sensor offset. The vertical distance to the probe is essential for the accuracy.
- *Feed Point Impedance and Return Loss:* These parameters are measured using a HP 8753E Vector Network Analyzer. The impedance is specified at the SMA connector of the dipole. The influence of reflections was eliminated by applying the averaging function while moving the dipole in the air, at least 70cm away from any obstacles.
- *E-field distribution:* E field is measured in the x-y-plane with an isotropic ER3D-field probe with 100 mW forward power to the antenna feed point. In accordance with [1], the scan area is 20mm wide, its length exceeds the dipole arm length (180 or 90mm). The sensor center is 15 mm (in z) above the metal top of the dipole arms. Two 3D maxima are available near the end of the dipole arms. Assuming the dipole arms are perfectly in one line, the average of these two maxima (in subgrid 2 and subgrid 8) is determined to compensate for any non-parallelity to the measurement plane as well as the sensor displacement. The E-field value stated as calibration value represents the maximum of the interpolated 3D-E-field, in the plane above the dipole surface.

The reported uncertainty of measurement is stated as the standard uncertainty of measurement multiplied by the coverage factor  $k=2$ , which for a normal distribution corresponds to a coverage probability of approximately 95%.

## Measurement Conditions

DASY system configuration, as far as not given on page 1.

<b>DASY Version</b>	DASY5	V52.10.1
<b>Phantom</b>	HAC Test Arch	
<b>Distance Dipole Top - Probe Center</b>	15 mm	
<b>Scan resolution</b>	dx, dy = 5 mm	
<b>Frequency</b>	1730 MHz $\pm$ 1 MHz 1880 MHz $\pm$ 1 MHz	
<b>Input power drift</b>	< 0.05 dB	

## Maximum Field values at 1730 MHz

<b>E-field 15 mm above dipole surface</b>	<b>condition</b>	<b>Interpolated maximum</b>
Maximum measured above high end	100 mW input power	97.0 V/m = 39.74 dBV/m
Maximum measured above low end	100 mW input power	96.0 V/m = 39.65 dBV/m
Averaged maximum above arm	100 mW input power	<b>96.5 V/m <math>\pm</math> 12.8 % (k=2)</b>

## Maximum Field values at 1880 MHz

<b>E-field 15 mm above dipole surface</b>	<b>condition</b>	<b>Interpolated maximum</b>
Maximum measured above high end	100 mW input power	90.3 V/m = 39.11 dBV/m
Maximum measured above low end	100 mW input power	88.8 V/m = 38.97 dBV/m
Averaged maximum above arm	100 mW input power	<b>89.5 V/m <math>\pm</math> 12.8 % (k=2)</b>

## Appendix (Additional assessments outside the scope of SCS 0108)

### Antenna Parameters

#### Nominal Frequencies

Frequency	Return Loss	Impedance
1730 MHz	22.9 dB	55.7 $\Omega$ + 5.1 j $\Omega$
1880 MHz	21.2 dB	59.3 $\Omega$ + 2.0 j $\Omega$
1900 MHz	21.6 dB	59.1 $\Omega$ - 1.1 j $\Omega$
1950 MHz	25.9 dB	50.7 $\Omega$ - 5.0 j $\Omega$
2000 MHz	20.7 dB	43.8 $\Omega$ + 6.1 j $\Omega$

#### Additional Frequencies

Frequency	Return Loss	Impedance
1730 MHz	22.9 dB	55.7 $\Omega$ + 5.1 j $\Omega$

### 3.2 Antenna Design and Handling

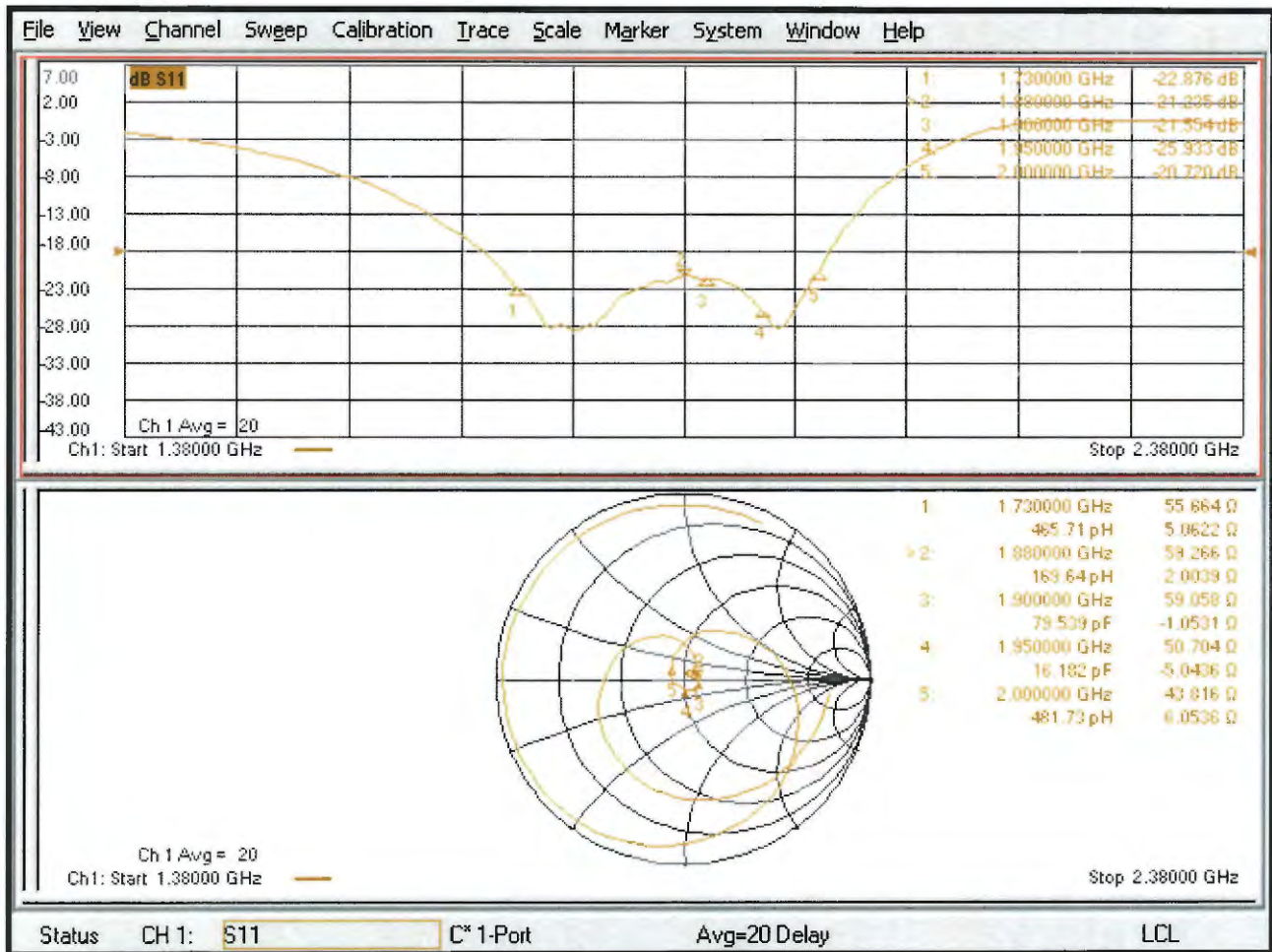
The calibration dipole has a symmetric geometry with a built-in two stub matching network, which leads to the enhanced bandwidth.

The dipole is built of standard semirigid coaxial cable. The internal matching line is open ended. The antenna is therefore open for DC signals.

Do not apply force to dipole arms, as they are liable to bend. The soldered connections near the feedpoint may be damaged. After excessive mechanical stress or overheating, check the impedance characteristics to ensure that the internal matching network is not affected.

After long term use with 40W radiated power, only a slight warming of the dipole near the feedpoint can be measured.

# Impedance Measurement Plot



## DASY5 E-field Result

Date: 19.09.2018

Test Laboratory: SPEAG Lab2

**DUT: HAC Dipole 1880 MHz; Type: CD1880V3; Serial: CD1880V3 - SN: 1038**

Communication System: UID 0 - CW ; Frequency: 1880 MHz, Frequency: 1730 MHz

Medium parameters used:  $\sigma = 0$  S/m,  $\epsilon_r = 1$ ;  $\rho = 0$  kg/m<sup>3</sup>

Phantom section: RF Section

Measurement Standard: DASY5 (IEEE/IEC/ANSI C63.19-2011)

DASY52 Configuration:

- Probe: EF3DV3 - SN4013; ConvF(1, 1, 1) @ 1880 MHz, ConvF(1, 1, 1) @ 1730 MHz; Calibrated: 05.03.2018
- Sensor-Surface: (Fix Surface)
- Electronics: DAE4 Sn781; Calibrated: 17.01.2018
- Phantom: HAC Test Arch with AMCC; Type: SD HAC P01 BA; Serial: 1070
- DASY52 52.10.1(1476); SEMCAD X 14.6.11(7439)

**Dipole E-Field measurement @ 1880MHz/E-Scan - 1880MHz d=15mm/Hearing Aid Compatibility Test (41x181x1):**

Interpolated grid: dx=0.5000 mm, dy=0.5000 mm

Device Reference Point: 0, 0, -6.3 mm

Reference Value = 155.2 V/m; Power Drift = -0.03 dB

Applied MIF = 0.00 dB

RF audio interference level = 39.11 dBV/m

**Emission category: M2**

MIF scaled E-field

Grid 1 M2 38.75 dBV/m	Grid 2 M2 39.11 dBV/m	Grid 3 M2 39.05 dBV/m
Grid 4 M2 36.11 dBV/m	Grid 5 M2 36.24 dBV/m	Grid 6 M2 36.17 dBV/m
Grid 7 M2 38.77 dBV/m	Grid 8 M2 38.97 dBV/m	Grid 9 M2 38.81 dBV/m

**Dipole E-Field measurement @ 1730MHz/E-Scan - 1730MHz d=15mm/Hearing Aid Compatibility Test (41x181x1):**

Interpolated grid: dx=0.5000 mm, dy=0.5000 mm

Device Reference Point: 0, 0, -6.3 mm

Reference Value = 168.4 V/m; Power Drift = 0.00 dB

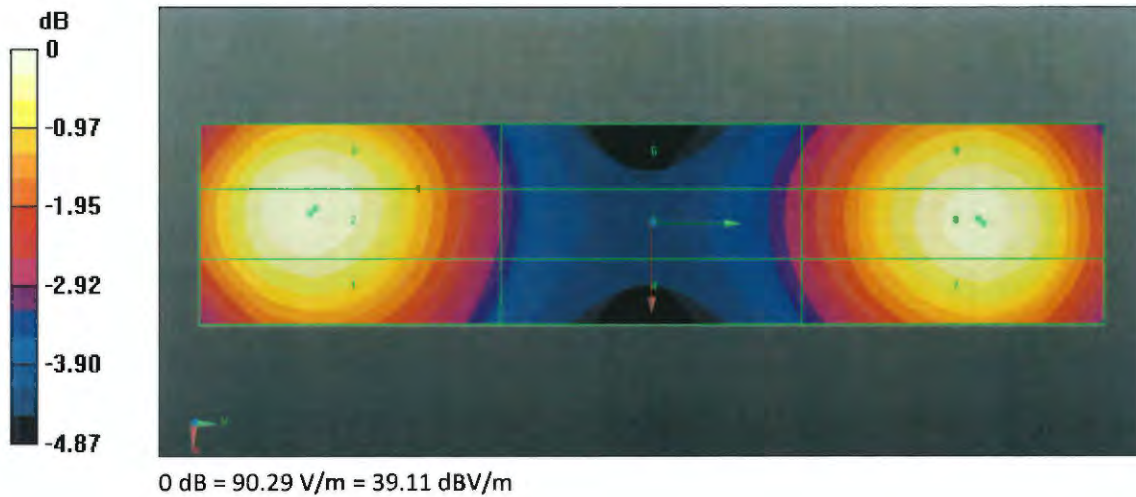
Applied MIF = 0.00 dB

RF audio interference level = 39.74 dBV/m

**Emission category: M2**

MIF scaled E-field

Grid 1 M2 39.27 dBV/m	Grid 2 M2 39.65 dBV/m	Grid 3 M2 39.59 dBV/m
Grid 4 M2 36.98 dBV/m	Grid 5 M2 37.17 dBV/m	Grid 6 M2 37.12 dBV/m
Grid 7 M2 39.5 dBV/m	Grid 8 M2 39.74 dBV/m	Grid 9 M2 39.61 dBV/m





### CD1880V3, serial no. 1038 Extended Dipole Calibrations

Referring to KDB 450824, if dipoles are verified in return loss (<-20dB, within 20% of prior calibration), and in impedance (within 5 ohm of prior calibration), the annual calibration is not necessary and the calibration interval can be extended.

#### <Justification of the extended calibration>

CD1880V3 – serial no. 1038						
1730MHZ						
Date of Measurement	Return-Loss (dB)	Delta (%)	Real Impedance (ohm)	Delta (ohm)	Imaginary Impedance (ohm)	Delta (ohm)
09.19.2018	-22.9		55.7		5.1	
09.18.2019	-21.704	-5.22	56.98	1.28	5.926	0.826
09.17.2020	-20.861	-8.9	56.653	-0.953	5.4734	-0.3734
1880MHZ						
Date of Measurement	Return-Loss (dB)	Delta (%)	Real Impedance (ohm)	Delta (ohm)	Imaginary Impedance (ohm)	Delta (ohm)
09.19.2018	-21.2		59.3		2	
09.18.2019	-21.662	2.18	58.318	-0.982	2.923	0.923
09.17.2020	-22.276	5.08	59.3	-0.04	1.7621	0.2379

The return loss is <-20dB, within 20% of prior calibration; the impedance is within 5 ohm of prior calibration. Therefore the verification result should support extended calibration.





<Dipole Verification Data> - D1880 V3, serial no. 1038 (Data of Measurement : 09.18.2019)

1880 MHz - Head

