

## System Check\_Head\_835MHz

Communication System: ; Frequency: 835.0

Medium: HSL\_835\_210721. Medium parameters used:  $f = 835.0$  MHz;  $\sigma = 0.89$  S/m;  $\epsilon_r = 41.3$

Ambient Temperature: 23.4°C; Liquid Temperature: 22.4°C

DASY6 Configuration:

- Probe: EX3DV4 - SN3642; ConvF(8.92, 8.92, 8.92); Calibrated: 2021-04-26
- Sensor-Surface: 1.4 mm
- Electronics: DAE4 Sn1647; Calibrated: 2021-01-07
- Phantom: Twin-SAM V4.0 (30deg probe tilt); Serial: 1489; Section: Flat
- Measurement Software: cDASY6 V6.6.0.13926
- UID: CW, 0--
- MAIA: Area Scan: N/A; Zoom Scan: N/A

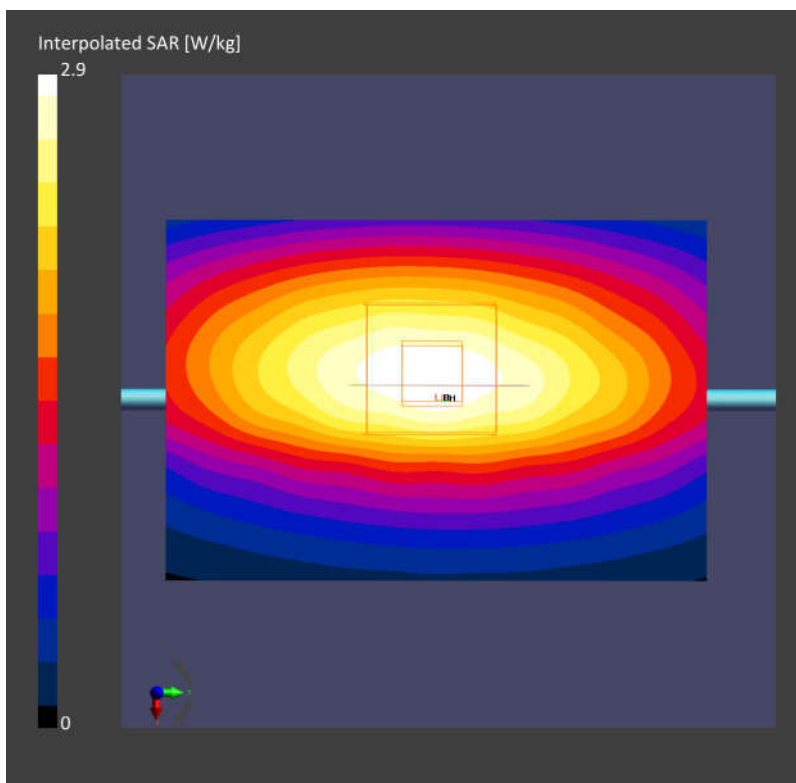
**Area Scan (60.0 mm x 90.0 mm):** Measurement Grid: 15.0 mm x 15.0 mm

SAR (1g) = 2.55 W/kg; SAR (10g) = 1.69 W/kg;

**Zoom Scan (30.0 mm x 30.0 mm x 30.0 mm):** Measurement Grid: 6.0 mm x 6.0 mm x 1.5 mm

Power Drift = 0.12 dB

SAR (1g) = 2.52 W/kg; SAR (10g) = 1.65 W/kg;



## System Check\_Head\_1900MHz

Communication System: ; Frequency: 1900.0

Medium: HSL\_1900\_210721. Medium parameters used:  $f=1900.0$  MHz;  $\sigma=1.42$  S/m;  $\epsilon_r=41.0$

Ambient Temperature: 23.4°C; Liquid Temperature: 22.4°C

DASY6 Configuration:

- Probe: EX3DV4 - SN3642; ConvF(7.97, 7.97, 7.97); Calibrated: 2021-04-26
- Sensor-Surface: 1.4 mm
- Electronics: DAE4 Sn1647; Calibrated: 2021-01-07
- Phantom: Twin-SAM V4.0 (30deg probe tilt); Serial: 1489; Section: Flat
- Measurement Software: cDASY6 V6.6.0.13926
- UID: CW, 0--
- MAIA: Area Scan: N/A; Zoom Scan: N/A

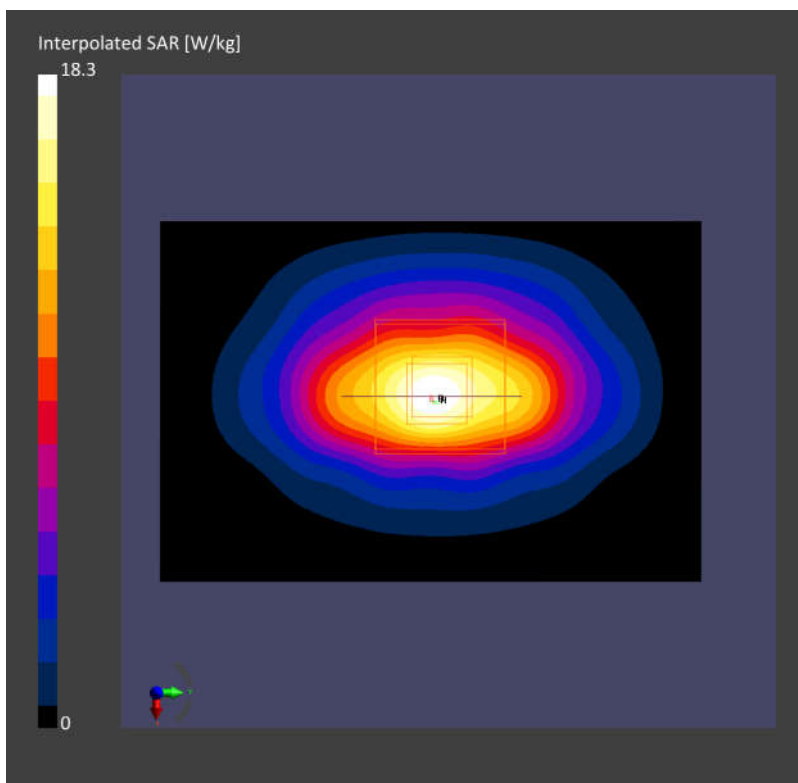
**Area Scan (60.0 mm x 90.0 mm):** Measurement Grid: 15.0 mm x 15.0 mm

SAR (1g) = 9.62 W/kg; SAR (10g) = 4.95 W/kg;

**Zoom Scan (30.0 mm x 30.0 mm x 30.0 mm):** Measurement Grid: 6.0 mm x 6.0 mm x 1.5 mm

Power Drift = -0.16 dB

SAR (1g) = 9.69 W/kg; SAR (10g) = 5.04 W/kg;



## System Check\_Head\_3500MHz

Communication System: ; Frequency: 3500.0

Medium: HSL\_3500\_210721. Medium parameters used:  $f= 3500.0$  MHz;  $\sigma= 2.96$  S/m;  $\epsilon_r = 37.8$

Ambient Temperature: 23.5°C; Liquid Temperature: 22.5°C

DASY6 Configuration:

- Probe: EX3DV4 - SN3728; ConvF(6.56, 6.56, 6.56); Calibrated: 2021-02-23
- Sensor-Surface: 1.4 mm
- Electronics: DAE4 Sn1424; Calibrated: 2021-01-19
- Phantom: Twin-SAM V4.0 (30deg probe tilt); Serial: 1489; Section: Flat
- Measurement Software: cDASY6 V6.6.0.13926
- UID: CW, 0--
- MAIA: Area Scan: N/A; Zoom Scan: N/A

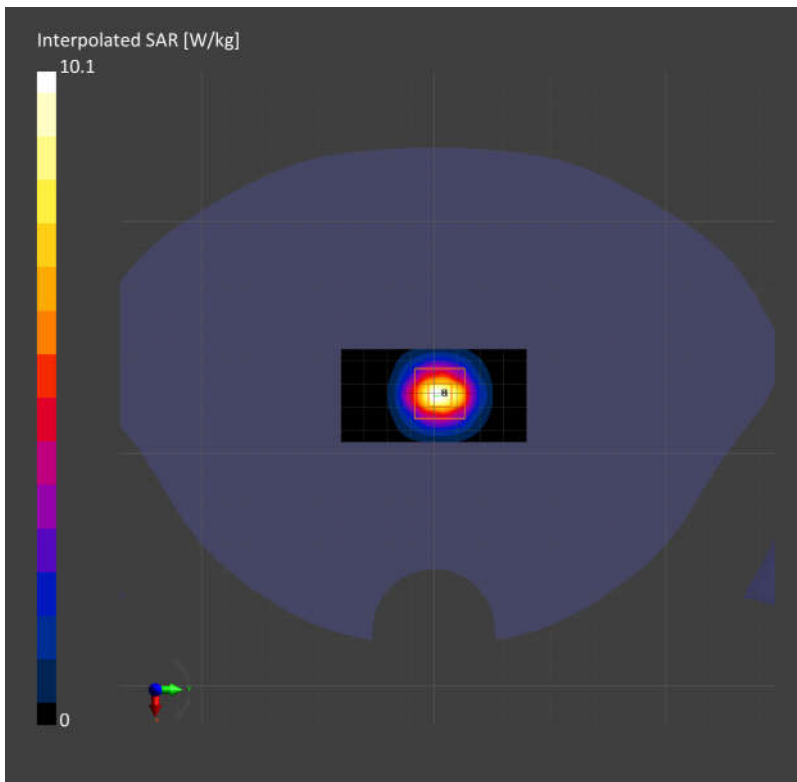
**Area Scan (40.0 mm x 80.0 mm):** Measurement Grid: 10.0 mm x 10.0 mm

SAR (1g) = 7.20 W/kg; SAR (10g) = 2.75 W/kg;

**Zoom Scan (28.0 mm x 28.0 mm x 28.0 mm):** Measurement Grid: 5.0 mm x 5.0 mm x 1.4 mm

Power Drift = -0.02 dB

SAR (1g) = 7.31 W/kg; SAR (10g) = 2.78 W/kg;



## System Check\_Head\_3700MHz

Communication System: ; Frequency: 3700.0

Medium: HSL\_3700\_210721. Medium parameters used:  $f= 3700.0$  MHz;  $\sigma= 3.17$  S/m;  $\epsilon_r = 37.8$

Ambient Temperature: 23.5°C; Liquid Temperature: 22.5°C

DASY6 Configuration:

- Probe: EX3DV4 - SN3728; ConvF(6.49, 6.49, 6.49); Calibrated: 2021-02-23
- Sensor-Surface: 1.4 mm
- Electronics: DAE4 Sn1424; Calibrated: 2021-01-19
- Phantom: Twin-SAM V4.0 (30deg probe tilt); Serial: 1489; Section: Flat
- Measurement Software: cDASY6 V6.6.0.13926
- UID: CW, 0--
- MAIA: Area Scan: N/A; Zoom Scan: N/A

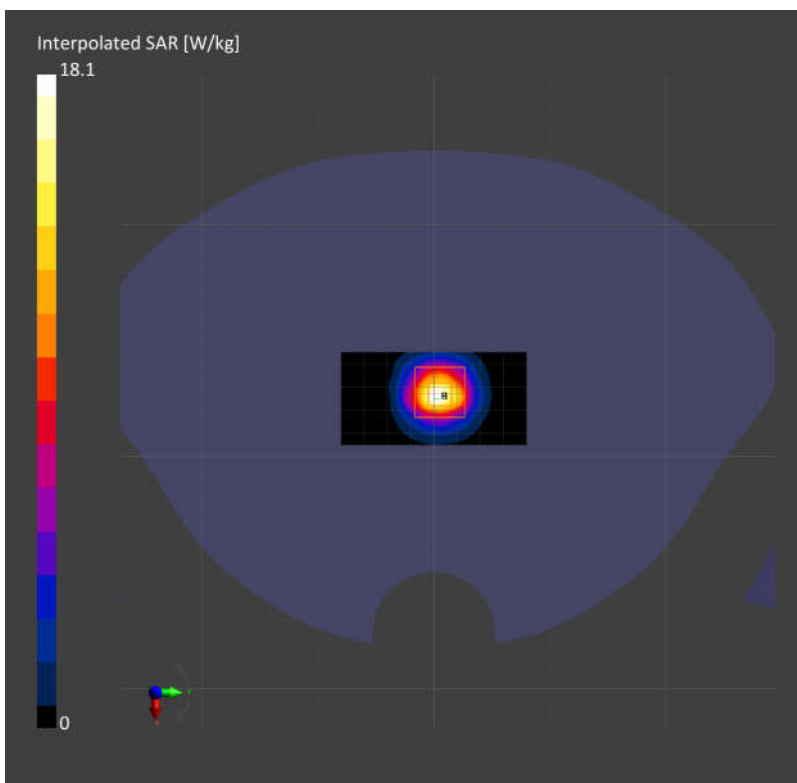
**Area Scan (40.0 mm x 80.0 mm):** Measurement Grid: 10.0 mm x 10.0 mm

SAR (1g) = 6.41 W/kg; SAR (10g) = 2.49 W/kg;

**Zoom Scan (28.0 mm x 28.0 mm x 28.0 mm):** Measurement Grid: 5.0 mm x 5.0 mm x 1.4 mm

Power Drift = 0.07 dB

SAR (1g) = 6.76 W/kg; SAR (10g) = 2.50 W/kg;



Measurement Report for Device  
Device Under Test Properties

Model, Manufacturer	Dimensions [mm]	IMEI	DUT Type
Device,	100.0 x 100.0 x 100.0		5G Verification Source

Exposure Conditions

Phantom Section	Position, Test Distance [mm]	Frequency [MHz]	Conversion Factor
5G	FRONT, 5.50	30000.0	1.0

Hardware Setup

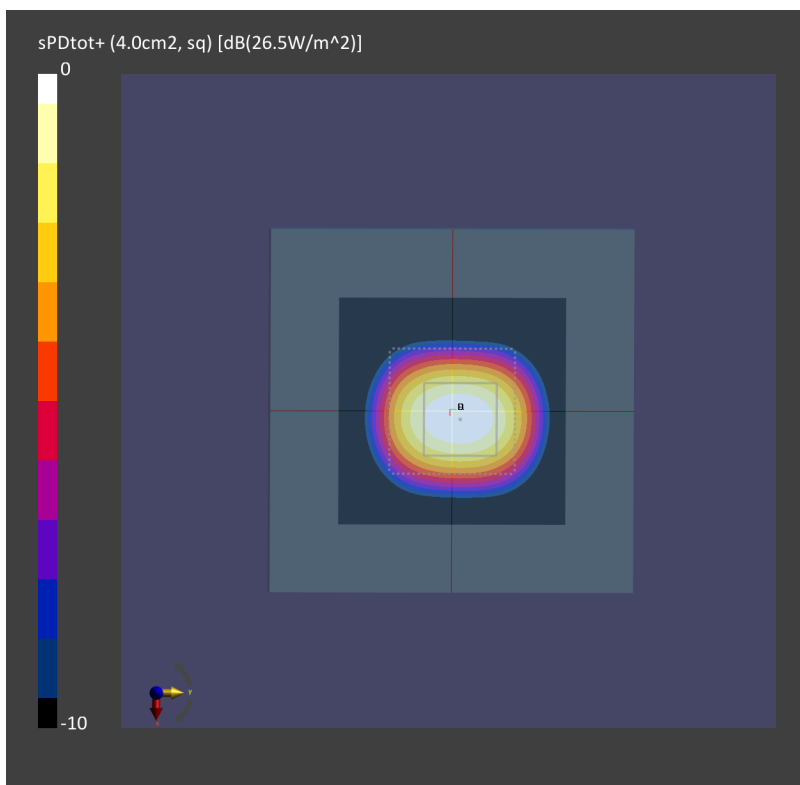
Phantom	Medium	Probe, Calibration Date	DAE, Calibration Date
mmWave - xxxx	Air -	EUmmWV4 - SN9441_F1-78GHz, 2020-11-24	DAE4 Sn656, 2021-01-22

Scans Setup

Scan Type	5G Scan
Grid Extents [mm]	60.0 x 60.0
Grid Steps [lambda]	0.25 x 0.25
Sensor Surface [mm]	5.5

Measurement Results

Date	2021-06-24, 02:15
Avg. Area [cm <sup>2</sup> ]	4.00
psPDn+ [W/m <sup>2</sup> ]	26.1
psPDtot+ [W/m <sup>2</sup> ]	26.5
H <sub>max</sub> [A/m]	0.312
E <sub>max</sub> [V/m]	118
max(Stot) [W/m <sup>2</sup> ]	36.4
Power Drift [dB]	0.02



Measurement Report for Device  
Device Under Test Properties

Model, Manufacturer	Dimensions [mm]	IMEI	DUT Type
Device,	100.0 x 100.0 x 100.0		5G Verification Source

Exposure Conditions

Phantom Section	Position, Test Distance [mm]	Frequency [MHz]	Conversion Factor
5G	FRONT, 5.50	30000.0	1.0

Hardware Setup

Phantom	Medium	Probe, Calibration Date	DAE, Calibration Date
mmWave - xxxx	Air -	EUmmWV4 - SN9441_F1-78GHz, 2020-11-24	DAE4 Sn656, 2021-01-22

Scans Setup

Scan Type	5G Scan
Grid Extents [mm]	60.0 x 60.0
Grid Steps [lambda]	0.25 x 0.25
Sensor Surface [mm]	5.5

Measurement Results

Date	2021-07-02, 09:18
Avg. Area [cm <sup>2</sup> ]	4.00
psPDn+ [W/m <sup>2</sup> ]	26.3
psPDtot+ [W/m <sup>2</sup> ]	26.7
H <sub>max</sub> [A/m]	0.309
E <sub>max</sub> [V/m]	117
max(Stot) [W/m <sup>2</sup> ]	36.1
Power Drift [dB]	-0.00

