

Measurement Report for Device
Device Under Test Properties

Model, Manufacturer	Dimensions [mm]	IMEI	DUT Type
Device,	162.0 x 80.0 x 10.0		Phone

Exposure Conditions

Phantom Section	Position, Test Distance [mm]	Frequency [MHz]	Conversion Factor
5G	EDGE TOP, 2.00	38500.0	1.0

Hardware Setup

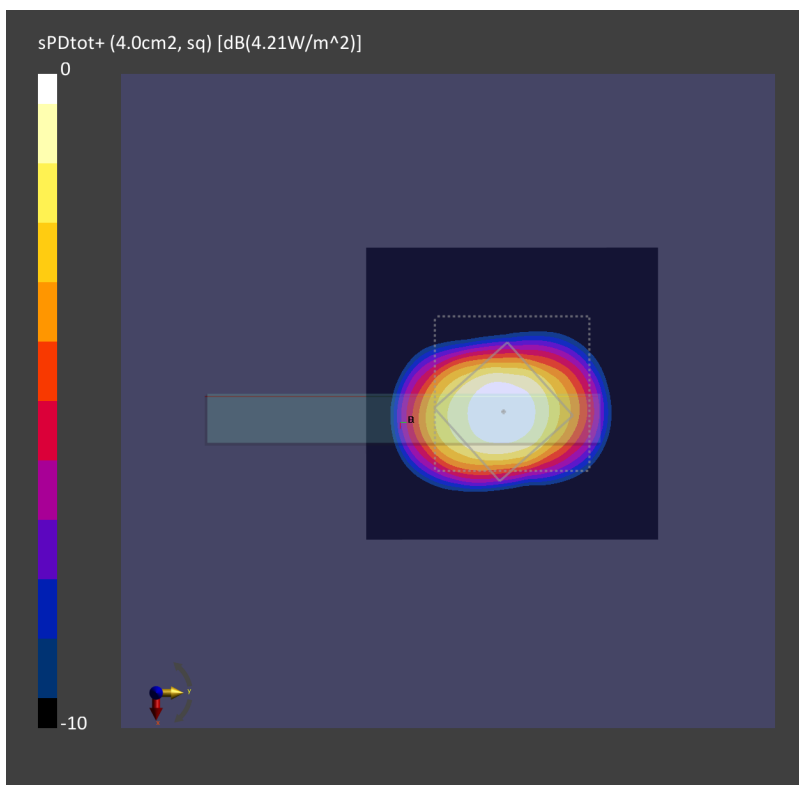
Phantom	Medium	Probe, Calibration Date	DAE, Calibration Date
mmWave - xxxx	Air -	EUmmWV4 - SN9441_F1-78GHz, 2020-11-24	DAE4 Sn656, 2021-01-22

Scans Setup

Scan Type	5G Scan
Grid Extents [mm]	60.0 x 60.0
Grid Steps [lambda]	0.25 x 0.25
Sensor Surface [mm]	2.0

Measurement Results

Date	2021-07-04, 10:30
Avg. Area [cm ²]	4.00
psPDn+ [W/m ²]	3.45
psPDtot+ [W/m ²]	4.21
H _{max} [A/m]	0.226
E _{max} [V/m]	93.1
max(S _{tot}) [W/m ²]	15.4
Power Drift [dB]	0.07



Measurement Report for Device
Device Under Test Properties

Model, Manufacturer	Dimensions [mm]	IMEI	DUT Type
Device,	162.0 x 80.0 x 10.0		Phone

Exposure Conditions

Phantom Section	Position, Test Distance [mm]	Frequency [MHz]	Conversion Factor
5G	EDGE TOP, 2.00	27500.0	1.0

Hardware Setup

Phantom	Medium	Probe, Calibration Date	DAE, Calibration Date
mmWave - xxxx	Air -	EUmmWV4 - SN9441_F1-78GHz, 2020-11-24	DAE4 Sn656, 2021-01-22

Scans Setup

Scan Type	5G Scan
Grid Extents [mm]	60.0 x 60.0
Grid Steps [lambda]	0.25 x 0.25
Sensor Surface [mm]	2.0

Measurement Results

Date	2021-07-05, 05:06
Avg. Area [cm ²]	4.00
psPDn+ [W/m ²]	4.18
psPDtot+ [W/m ²]	4.76
H _{max} [A/m]	0.190
E _{max} [V/m]	79.1
max(Stot) [W/m ²]	14.0
Power Drift [dB]	0.05

