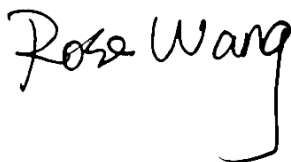


FCC SAR Test Report


APPLICANT : Motorola Mobility LLC
EQUIPMENT : Mobile Phone
BRAND NAME : Motorola
MODEL NAME : XT2097-5
FCC ID : IHDT56ZJ5
STANDARD : FCC 47 CFR Part 2 (2.1093)

The product was received on Nov. 12, 2020 and testing was started from Dec. 07, 2020 and completed on Dec. 23, 2020. We, Sporton International (Kunshan) Inc, would like to declare that the tested sample has been evaluated in accordance with the procedures and had been in compliance with the applicable technical standards.

The test results in this report apply exclusively to the tested model / sample. Without written approval of Sporton International (Kunshan) Inc., the test report shall not be reproduced except in full.



Reviewed by: Rose Wang / Supervisor



Approved by: Kat Yin / Manager



Sporton International (Kunshan) Inc.

No. 1098, Pengxi North Road, Kunshan Economic Development Zone Jiangsu Province 215300
People's Republic of China



Table of Contents

1. Statement of Compliance 4
2. Administration Data 5
3. Guidance Applied 5
4. Equipment Under Test (EUT) Information 6
4.1 General Information 6
4.2 General LTE SAR Test and Reporting Considerations 7
5. RF Exposure Limits 9
5.1 Uncontrolled Environment 9
5.2 Controlled Environment 9
6. Specific Absorption Rate (SAR) 10
6.1 Introduction 10
6.2 SAR Definition 10
7. System Description and Setup 11
7.1 E-Field Probe 12
7.2 Data Acquisition Electronics (DAE) 12
7.3 Phantom 13
7.4 Device Holder 14
8. Measurement Procedures 15
8.1 Spatial Peak SAR Evaluation 15
8.2 Power Reference Measurement 16
8.3 Area Scan 16
8.4 Zoom Scan 17
8.5 Volume Scan Procedures 17
8.6 Power Drift Monitoring 17
9. Test Equipment List 18
10. System Verification 19
10.1 Tissue Simulating Liquids 19
10.2 Tissue Verification 20
10.3 System Performance Check Results 21
11. RF Exposure Positions 22
11.1 Ear and handset reference point 22
11.2 Definition of the cheek position 23
11.3 Definition of the tilt position 24
11.4 Body Worn Accessory 25
11.5 Product Specific 10g SAR Exposure 26
11.6 Wireless Router 26
12. Conducted RF Output Power (Unit: dBm) 27
13. Antenna Location 35
14. SAR Test Results 36
14.1 Head SAR 39
14.2 Hotspot SAR 41
14.3 Body Worn Accessory SAR 46
14.4 Product specific 10g SAR 48
14.5 Repeated SAR Measurement 49
15. Simultaneous Transmission Analysis 50
15.1 Head Exposure Conditions 51
15.2 Hotspot Exposure Conditions 52
15.3 Body-Worn Accessory Exposure Conditions 53
15.4 SPLSR Evaluation and Analysis 54
16. Uncertainty Assessment 56
17. References 57
Appendix A. Plots of System Performance Check
Appendix B. Plots of High SAR Measurement
Appendix C. DASy Calibration Certificate
Appendix D. Test Setup Photos
Appendix E. Conducted RF Output Power Table



1. Statement of Compliance

The maximum results of Specific Absorption Rate (SAR) found during testing for **Motorola Mobility LLC, Mobile Phone, XT2097-5**, are as follows.

Highest 1g SAR Summary						
Equipment Class	Frequency Band		Head (Separation 0mm)	Hotspot (Separation 5mm)	Body-worn (Separation 5mm)	Highest Simultaneous Transmission 1g SAR (W/kg)
			1g SAR (W/kg)			
Licensed	GSM	GSM850	0.26	1.15	1.15	1.58
		GSM1900	0.16	1.36	0.86	
	WCDMA	Band II	0.25	1.22	1.22	
		Band IV	0.27	1.37	1.37	
		Band V	0.25	0.79	0.79	
	LTE	Band 2	0.18	1.21	0.87	
		Band 5	0.21	0.71	0.71	
		Band 7	0.17	1.22	1.19	
		Band 66/Band 4	0.17	1.31	1.24	
DTS	WLAN	2.4GHz WLAN	1.11	1.07	0.95	1.50
DSS	Bluetooth	2.4GHz Bluetooth	0.22	0.22	<0.10	1.58

Highest 10g SAR Summary			
Equipment Class	Frequency Band		Product Specific 10g SAR (W/kg) (Separation 0mm)
Licensed	GSM	GSM1900	2.52
	WCDMA	Band II	2.27
		Band IV	1.11
	LTE	Band 2	2.84
		Band 7	1.19
		Band 66/Band 4	1.24

Date of Testing: 2020/12/7~2020/12/23

Remark: This device supports LTE B4 and B66. Since the supported frequency span for LTE B4 falls completely within the supports frequency span for LTE B66, both LTE bands have the same target power, and both LTE bands share the same transmission path; therefore, SAR was only assessed for LTE B66.

Declaration of Conformity:

The test results with all measurement uncertainty excluded are presented in accordance with the regulation limits or requirements declared by manufacturers.

Comments and Explanations:

The declared of product specification for EUT presented in the report are provided by the manufacturer, and the manufacturer takes all the responsibilities for the accuracy of product specification.

This device is in compliance with Specific Absorption Rate (SAR) for general population/uncontrolled exposure limits (1.6 W/kg for Partial-Body 1g SAR, 4.0 W/kg for Product Specific 10g SAR) specified in FCC 47 CFR part 2 (2.1093) and ANSI/IEEE C95.1-1992, and had been tested in accordance with the measurement methods and procedures specified in IEEE 1528-2013 and FCC KDB publications.



2. Administration Data

Sporton International (Kunshan) Inc. is accredited to ISO/IEC 17025:2017 by American Association for Laboratory Accreditation with Certificate Number 5145.02.

Testing Laboratory		
Test Firm	Sporton International (Kunshan) Inc.	
Test Site Location	No. 1098, Pengxi North Road, Kunshan Economic Development Zone Jiangsu Province 215300 People's Republic of China TEL : +86-512-57900158 FAX : +86-512-57900958	
Test Site No.	FCC Designation No.	FCC Test Firm Registration No.
	CN1257	314309

Applicant	
Company Name	Motorola Mobility LLC
Address	222 W, Merchandise Mart Plaza, Chicago IL 60654 USA

Manufacturer	
Company Name	Motorola Mobility LLC
Address	222 W, Merchandise Mart Plaza, Chicago IL 60654 USA

3. Guidance Applied

The Specific Absorption Rate (SAR) testing specification, method, and procedure for this device is in accordance with the following standards:

- FCC 47 CFR Part 2 (2.1093)
- ANSI/IEEE C95.1-1992
- IEEE 1528-2013
- FCC KDB 865664 D01 SAR Measurement 100 MHz to 6 GHz v01r04
- FCC KDB 865664 D02 SAR Reporting v01r02
- FCC KDB 447498 D01 General RF Exposure Guidance v06
- FCC KDB 648474 D04 SAR Evaluation Considerations for Wireless Handsets v01r03
- FCC KDB 248227 D01 802.11 Wi-Fi SAR v02r02
- FCC KDB 941225 D01 3G SAR Procedures v03r01
- FCC KDB 941225 D05 SAR for LTE Devices v02r05
- FCC KDB 941225 D06 Hotspot Mode SAR v02r01



4. Equipment Under Test (EUT) Information

4.1 General Information

Product Feature & Specification	
Equipment Name	Mobile Phone
Brand Name	Motorola
Model Name	XT2097-5
FCC ID	IHDT56ZJ5
IMEI Code	Sample 1: IMEI 1: 351328460005192 IMEI 2: 351328460025190 Sample 2: IMEI 1 : 351328460005200 IMEI 2: 351328460025208
Wireless Technology and Frequency Range	GSM850: 824.2 MHz ~ 848.8 MHz GSM1900: 1850.2 MHz ~ 1909.8 MHz WCDMA Band II: 1852.4 MHz ~ 1907.6 MHz WCDMA Band IV: 1712.4 MHz ~ 1752.6 MHz WCDMA Band V: 826.4 MHz ~ 846.6 MHz LTE Band 2: 1850.7 MHz ~ 1909.3 MHz LTE Band 4: 1710.7 MHz ~ 1754.3 MHz LTE Band 5: 824.7 MHz ~ 848.3 MHz LTE Band 7: 2502.5 MHz ~ 2567.5 MHz LTE Band 66: 1710.7 MHz ~ 1779.3 MHz WLAN 2.4GHz Band: 2412 MHz ~ 2462 MHz Bluetooth: 2402 MHz ~ 2480 MHz
Mode	GSM/GPRS/EGPRS RMC/AMR 12.2Kbps HSDPA HSUPA DC-HSDPA HSPA+(16QAM uplink) LTE: QPSK, 16QAM, 64QAM WLAN 2.4GHz 802.11b/g/n HT20 Bluetooth BR/EDR/LE
HW Version	DVT2
SW Version	QOL30.183
GSM / (E)GPRS Transfer mode	Class B – EUT cannot support Packet Switched and Circuit Switched Network simultaneously but can automatically switch between Packet and Circuit Switched Network.
EUT Stage	Identical Prototype
Remark: 1. 802.11n-HT40 is not supported in 2.4GHz WLAN. 2. This device supports VoIP in GPRS, EGPRS, WCDMA and LTE (e.g. for 3rd-party VoIP), LTE supports VoLTE operation. 3. This device 2.4GHz WLAN support hotspot operation and Bluetooth support tethering applications. 4. This device does not support DTM operation and supports GRPS/EGRPS mode up to multi-slot class 12. 5. The device implements receiver detect mechanism/hotspot trigger reduced power for the power management for SAR compliance at different exposure conditions (head, body-worn, hotspot, extremity). The device will invoke corresponding work scenarios power level, which are provided in the operational description. 6. For Some WWAN bands, Receiver off body-worn power level higher than hotspot reduced power level, so front/back Receiver off body-worn SAR can represent hotspot conservatively. 7. There are three samples, please refer the product equality declaration exhibit submitted. According to the difference, we chose sample 1 to perform full SAR testing and sample 2 verified the worst case of sample 1. 8. For dual SIM card mobile has two SIM slots and supports dual SIM dual standby. The WWAN radio transmission will be enabled by either one SIM at a time (single active). After pre-scan two SIM cards power, we found test result of the SIM1 was the worse, so we chose SIM1 slot to perform all tests. 9. The device has two headsets, only supplier is different, so we chose headset 1 to perform full SAR testing. 10. The device has three batteries with the same battery capacity, only Manufacturer is different. We only chose battery 1 to perform full SAR testing.	



4.2 General LTE SAR Test and Reporting Considerations

Summarized necessary items addressed in KDB 941225 D05 v02r05																																																															
FCC ID	IHDT56ZJ5																																																														
Equipment Name	Mobile Phone																																																														
Operating Frequency Range of each LTE transmission band	LTE Band 2: 1850.7 MHz ~ 1909.3 MHz LTE Band 4: 1710.7 MHz ~ 1754.3 MHz LTE Band 5: 824.7 MHz ~ 848.3 MHz LTE Band 7: 2502.5 MHz ~ 2567.5 MHz LTE Band 66: 1710.7 MHz ~ 1779.3 MHz																																																														
Channel Bandwidth	LTE Band 2: 1.4MHz, 3MHz, 5MHz, 10MHz, 15MHz, 20MHz LTE Band 4: 1.4MHz, 3MHz, 5MHz, 10MHz, 15MHz, 20MHz LTE Band 5: 1.4MHz, 3MHz, 5MHz, 10MHz LTE Band 7: 5MHz, 10MHz, 15MHz, 20MHz LTE Band 66: 1.4MHz, 3MHz, 5MHz, 10MHz, 15MHz, 20MHz																																																														
uplink modulations used	QPSK / 16QAM / 64QAM																																																														
LTE Voice / Data requirements	Voice and Data																																																														
LTE Release Version	R11, Cat5																																																														
CA Support	Not supported																																																														
LTE MPR permanently built-in by design	<p>Table 6.2.3-1: Maximum Power Reduction (MPR) for Power Class 1, 2 and 3</p> <table border="1"> <thead> <tr> <th rowspan="2">Modulation</th> <th colspan="6">Channel bandwidth / Transmission bandwidth (N_{RB})</th> <th rowspan="2">MPR (dB)</th> </tr> <tr> <th>1.4 MHz</th> <th>3.0 MHz</th> <th>5 MHz</th> <th>10 MHz</th> <th>15 MHz</th> <th>20 MHz</th> </tr> </thead> <tbody> <tr> <td>QPSK</td> <td>> 5</td> <td>> 4</td> <td>> 8</td> <td>> 12</td> <td>> 16</td> <td>> 18</td> <td>≤ 1</td> </tr> <tr> <td>16 QAM</td> <td>≤ 5</td> <td>≤ 4</td> <td>≤ 8</td> <td>≤ 12</td> <td>≤ 16</td> <td>≤ 18</td> <td>≤ 1</td> </tr> <tr> <td>16 QAM</td> <td>> 5</td> <td>> 4</td> <td>> 8</td> <td>> 12</td> <td>> 16</td> <td>> 18</td> <td>≤ 2</td> </tr> <tr> <td>64 QAM</td> <td>≤ 5</td> <td>≤ 4</td> <td>≤ 8</td> <td>≤ 12</td> <td>≤ 16</td> <td>≤ 18</td> <td>≤ 2</td> </tr> <tr> <td>64 QAM</td> <td>> 5</td> <td>> 4</td> <td>> 8</td> <td>> 12</td> <td>> 16</td> <td>> 18</td> <td>≤ 3</td> </tr> <tr> <td>256 QAM</td> <td colspan="6">≥ 1</td> <td>≤ 5</td> </tr> </tbody> </table>	Modulation	Channel bandwidth / Transmission bandwidth (N _{RB})						MPR (dB)	1.4 MHz	3.0 MHz	5 MHz	10 MHz	15 MHz	20 MHz	QPSK	> 5	> 4	> 8	> 12	> 16	> 18	≤ 1	16 QAM	≤ 5	≤ 4	≤ 8	≤ 12	≤ 16	≤ 18	≤ 1	16 QAM	> 5	> 4	> 8	> 12	> 16	> 18	≤ 2	64 QAM	≤ 5	≤ 4	≤ 8	≤ 12	≤ 16	≤ 18	≤ 2	64 QAM	> 5	> 4	> 8	> 12	> 16	> 18	≤ 3	256 QAM	≥ 1						≤ 5
Modulation	Channel bandwidth / Transmission bandwidth (N _{RB})						MPR (dB)																																																								
	1.4 MHz	3.0 MHz	5 MHz	10 MHz	15 MHz	20 MHz																																																									
QPSK	> 5	> 4	> 8	> 12	> 16	> 18	≤ 1																																																								
16 QAM	≤ 5	≤ 4	≤ 8	≤ 12	≤ 16	≤ 18	≤ 1																																																								
16 QAM	> 5	> 4	> 8	> 12	> 16	> 18	≤ 2																																																								
64 QAM	≤ 5	≤ 4	≤ 8	≤ 12	≤ 16	≤ 18	≤ 2																																																								
64 QAM	> 5	> 4	> 8	> 12	> 16	> 18	≤ 3																																																								
256 QAM	≥ 1						≤ 5																																																								
LTE A-MPR	In the base station simulator configuration, Network Setting value is set to NS_01 to disable A-MPR during SAR testing and the LTE SAR tests was transmitting on all TTI frames (Maximum TTI)																																																														
Spectrum plots for RB configuration	A properly configured base station simulator was used for the SAR and power measurement; therefore, spectrum plots for each RB allocation and offset configuration are not included in the SAR report.																																																														
Power reduction applied to satisfy SAR compliance	Yes, hotspot will trigger reduced power for some LTE bands, the detail please referred to section 13.																																																														



Transmission (H, M, L) channel numbers and frequencies in each LTE band												
LTE Band 2												
	Bandwidth 1.4 MHz		Bandwidth 3 MHz		Bandwidth 5 MHz		Bandwidth 10 MHz		Bandwidth 15 MHz		Bandwidth 20 MHz	
	Ch. #	Freq. (MHz)	Ch. #	Freq. (MHz)	Ch. #	Freq. (MHz)	Ch. #	Freq. (MHz)	Ch. #	Freq. (MHz)	Ch. #	Freq. (MHz)
L	18607	1850.7	18615	1851.5	18625	1852.5	18650	1855	18675	1857.5	18700	1860
M	18900	1880	18900	1880	18900	1880	18900	1880	18900	1880	18900	1880
H	19193	1909.3	19185	1908.5	19175	1907.5	19150	1905	19125	1902.5	19100	1900
LTE Band 4												
	Bandwidth 1.4 MHz		Bandwidth 3 MHz		Bandwidth 5 MHz		Bandwidth 10 MHz		Bandwidth 15 MHz		Bandwidth 20 MHz	
	Ch. #	Freq. (MHz)	Ch. #	Freq. (MHz)	Ch. #	Freq. (MHz)	Ch. #	Freq. (MHz)	Ch. #	Freq. (MHz)	Ch. #	Freq. (MHz)
L	19957	1710.7	19965	1711.5	19975	1712.5	20000	1715	20025	1717.5	20050	1720
M	20175	1732.5	20175	1732.5	20175	1732.5	20175	1732.5	20175	1732.5	20175	1732.5
H	20393	1754.3	20385	1753.5	20375	1752.5	20350	1750	20325	1747.5	20300	1745
LTE Band 5												
	Bandwidth 1.4 MHz		Bandwidth 3 MHz		Bandwidth 5 MHz		Bandwidth 10 MHz		Bandwidth 15 MHz		Bandwidth 20 MHz	
	Ch. #	Freq. (MHz)	Ch. #	Freq. (MHz)	Ch. #	Freq. (MHz)	Ch. #	Freq. (MHz)	Ch. #	Freq. (MHz)	Ch. #	Freq. (MHz)
L	20407	824.7	20415	825.5	20425	826.5	20450	829	20475	830.5	20500	833
M	20525	836.5	20525	836.5	20525	836.5	20525	836.5	20525	836.5	20525	836.5
H	20643	848.3	20635	847.5	20625	846.5	20600	844	20575	842.5	20550	841
LTE Band 7												
	Bandwidth 5 MHz		Bandwidth 10 MHz		Bandwidth 15 MHz		Bandwidth 20 MHz		Bandwidth 15 MHz		Bandwidth 20 MHz	
	Ch. #	Freq. (MHz)	Ch. #	Freq. (MHz)	Ch. #	Freq. (MHz)	Ch. #	Freq. (MHz)	Ch. #	Freq. (MHz)	Ch. #	Freq. (MHz)
L	20775	2502.5	20800	2505	20825	2507.5	20850	2510	20875	2512.5	20900	2515
M	21100	2535	21100	2535	21100	2535	21100	2535	21100	2535	21100	2535
H	21425	2567.5	21400	2565	21375	2562.5	21350	2560	21325	2557.5	21300	2555
LTE Band 66												
	Bandwidth 1.4 MHz		Bandwidth 3 MHz		Bandwidth 5 MHz		Bandwidth 10 MHz		Bandwidth 15 MHz		Bandwidth 20 MHz	
	Ch. #	Freq. (MHz)	Ch. #	Freq. (MHz)	Ch. #	Freq. (MHz)	Ch. #	Freq. (MHz)	Ch. #	Freq. (MHz)	Ch. #	Freq. (MHz)
L	131979	1710.7	131987	1711.5	131997	1712.5	132022	1715	132047	1717.5	132072	1720
M	132322	1745	132322	1745	132322	1745	132322	1745	132322	1745	132322	1745
H	132665	1779.3	132657	1778.5	132647	1777.5	132622	1775	132597	1772.5	132572	1770

5. RF Exposure Limits

5.1 Uncontrolled Environment

Uncontrolled Environments are defined as locations where there is the exposure of individuals who have no knowledge or control of their exposure. The general population/uncontrolled exposure limits are applicable to situations in which the general public may be exposed or in which persons who are exposed as a consequence of their employment may not be made fully aware of the potential for exposure or cannot exercise control over their exposure. Members of the general public would come under this category when exposure is not employment-related; for example, in the case of a wireless transmitter that exposes persons in its vicinity.

5.2 Controlled Environment

Controlled Environments are defined as locations where there is exposure that may be incurred by persons who are aware of the potential for exposure, (i.e. as a result of employment or occupation). In general, occupational/controlled exposure limits are applicable to situations in which persons are exposed as a consequence of their employment, who have been made fully aware of the potential for exposure and can exercise control over their exposure. The exposure category is also applicable when the exposure is of a transient nature due to incidental passage through a location where the exposure levels may be higher than the general population/uncontrolled limits, but the exposed person is fully aware of the potential for exposure and can exercise control over his or her exposure by leaving the area or by some other appropriate means.

Limits for Occupational/Controlled Exposure (W/kg)

Whole-Body	Partial-Body	Hands, Wrists, Feet and Ankles
0.4	8.0	20.0

Limits for General Population/Uncontrolled Exposure (W/kg)

Whole-Body	Partial-Body	Hands, Wrists, Feet and Ankles
0.08	1.6	4.0

Whole-Body SAR is averaged over the entire body, partial-body SAR is averaged over any 1gram of tissue defined as a tissue volume in the shape of a cube. SAR for hands, wrists, feet and ankles is averaged over any 10 grams of tissue defined as a tissue volume in the shape of a cube.

6. Specific Absorption Rate (SAR)

6.1 Introduction

SAR is related to the rate at which energy is absorbed per unit mass in an object exposed to a radio field. The SAR distribution in a biological body is complicated and is usually carried out by experimental techniques or numerical modeling. The standard recommends limits for two tiers of groups, occupational/controlled and general population/uncontrolled, based on a person's awareness and ability to exercise control over his or her exposure. In general, occupational/controlled exposure limits are higher than the limits for general population/uncontrolled.

6.2 SAR Definition

The SAR definition is the time derivative (rate) of the incremental energy (dW) absorbed by (dissipated in) an incremental mass (dm) contained in a volume element (dv) of a given density (ρ). The equation description is as below:

$$\text{SAR} = \frac{d}{dt} \left(\frac{dW}{dm} \right) = \frac{d}{dt} \left(\frac{dW}{\rho dv} \right)$$

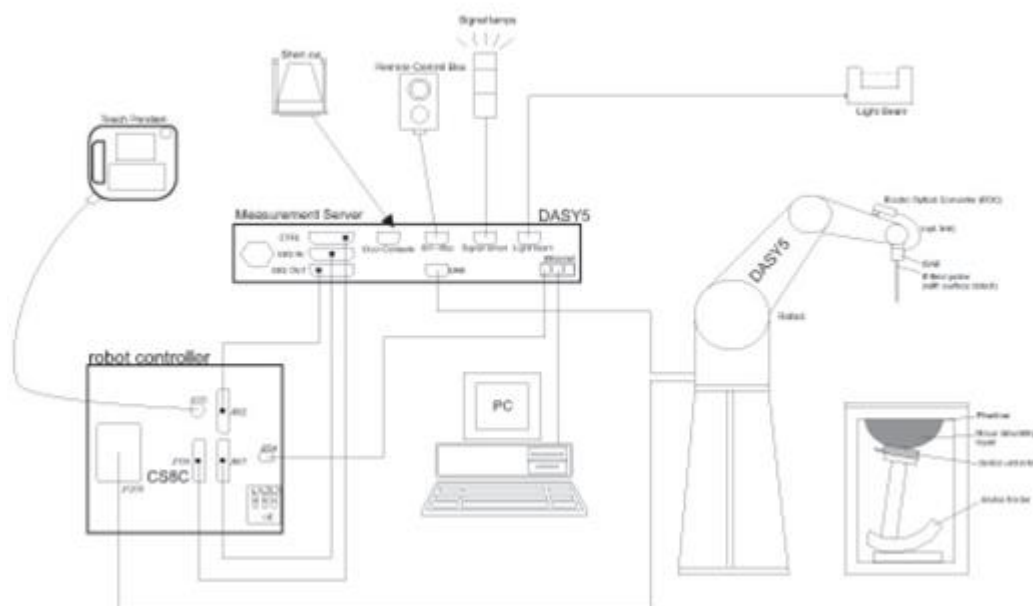
SAR is expressed in units of Watts per kilogram (W/kg)

$$\text{SAR} = \frac{\sigma |E|^2}{\rho}$$

Where: σ is the conductivity of the tissue, ρ is the mass density of the tissue and E is the RMS electrical field strength.

7. System Description and Setup

The DASY system used for performing compliance tests consists of the following items:




- A standard high precision 6-axis robot with controller, teach pendant and software. An arm extension for accommodating the data acquisition electronics (DAE).
- An isotropic Field probe optimized and calibrated for the targeted measurement.
- A data acquisition electronics (DAE) which performs the signal amplification, signal multiplexing, AD-conversion, offset measurements, mechanical surface detection, collision detection, etc. The unit is battery powered with standard or rechargeable batteries. The signal is optically transmitted to the EOC.
- The Electro-optical converter (EOC) performs the conversion from optical to electrical signals for the digital communication to the DAE. To use optical surface detection, a special version of the EOC is required. The EOC signal is transmitted to the measurement server.
- The function of the measurement server is to perform the time critical tasks such as signal filtering, control of the robot operation and fast movement interrupts.
- The Light Beam used is for probe alignment. This improves the (absolute) accuracy of the probe positioning.
- A computer running WinXP or Win7 and the DASY5 software.
- Remote control and teach pendant as well as additional circuitry for robot safety such as warning lamps, etc.
- The phantom, the device holder and other accessories according to the targeted measurement.

7.1 E-Field Probe

The SAR measurement is conducted with the dosimetric probe (manufactured by SPEAG).The probe is specially designed and calibrated for use in liquid with high permittivity. The dosimetric probe has special calibration in liquid at different frequency. This probe has a built in optical surface detection system to prevent from collision with phantom.

<ES3DV3 Probe>

Construction	Symmetric design with triangular core Interleaved sensors Built-in shielding against static charges PEEK enclosure material (resistant to organic solvents, e.g., DGBE)	
Frequency	10 MHz – 4 GHz; Linearity: ±0.2 dB (30 MHz – 4 GHz)	
Directivity	±0.2 dB in TSL (rotation around probe axis) ±0.3 dB in TSL (rotation normal to probe axis)	
Dynamic Range	5 µW/g – >100 mW/g; Linearity: ±0.2 dB	
Dimensions	Overall length: 337 mm (tip: 20 mm) Tip diameter: 3.9 mm (body: 12 mm) Distance from probe tip to dipole centers: 3.0 mm	

7.2 Data Acquisition Electronics (DAE)

The data acquisition electronics (DAE) consists of a highly sensitive electrometer-grade preamplifier with auto-zeroing, a channel and gain-switching multiplexer, a fast 16 bit AD-converter and a command decoder and control logic unit. Transmission to the measurement server is accomplished through an optical downlink for data and status information as well as an optical uplink for commands and the clock.


The input impedance of the DAE is 200 MOhm; the inputs are symmetrical and floating. Common mode rejection is above 80 dB.



Photo of DAE

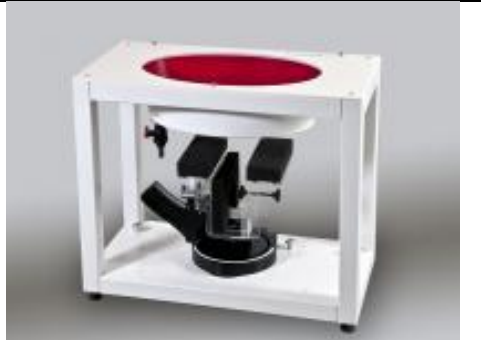
7.3 Phantom

<SAM Twin Phantom>

Shell Thickness	2 ± 0.2 mm; Center ear point: 6 ± 0.2 mm	
Filling Volume	Approx. 25 liters	
Dimensions	Length: 1000 mm; Width: 500 mm; Height: adjustable feet	
Measurement Areas	Left Hand, Right Hand, Flat Phantom	

The bottom plate contains three pair of bolts for locking the device holder. The device holder positions are adjusted to the standard measurement positions in the three sections. A white cover is provided to tap the phantom during off-periods to prevent water evaporation and changes in the liquid parameters. On the phantom top, three reference markers are provided to identify the phantom position with respect to the robot.

<ELI Phantom>

Shell Thickness	2 ± 0.2 mm (sagging: <1%)	
Filling Volume	Approx. 30 liters	
Dimensions	Major ellipse axis: 600 mm Minor axis: 400 mm	

The ELI phantom is intended for compliance testing of handheld and body-mounted wireless devices in the frequency range of 30 MHz to 6 GHz. ELI4 is fully compatible with standard and all known tissue simulating liquids.

7.4 Device Holder

<Mounting Device for Hand-Held Transmitter>

In combination with the Twin SAM V5.0/V5.0c or ELI phantoms, the Mounting Device for Hand-Held Transmitters enables rotation of the mounted transmitter device to specified spherical coordinates. At the heads, the rotation axis is at the ear opening. Transmitter devices can be easily and accurately positioned according to IEC 62209-1, IEEE 1528, FCC, or other specifications. The device holder can be locked for positioning at different phantom sections (left head, right head, flat). And upgrade kit to Mounting Device to enable easy mounting of wider devices like big smart-phones, e-books, small tablets, etc. It holds devices with width up to 140 mm.



Mounting Device for Hand-Held Transmitters



Mounting Device Adaptor for Wide-Phones

<Mounting Device for Laptops and other Body-Worn Transmitters>

The extension is lightweight and made of POM, acrylic glass and foam. It fits easily on the upper part of the mounting device in place of the phone positioned. The extension is fully compatible with the SAM Twin and ELI phantoms.



Mounting Device for Laptops

8. Measurement Procedures

The measurement procedures are as follows:

<Conducted power measurement>

- (a) For WWAN power measurement, use base station simulator to configure EUT WWAN transmission in conducted connection with RF cable, at maximum power in each supported wireless interface and frequency band.
- (b) Read the WWAN RF power level from the base station simulator.
- (c) For WLAN/BT power measurement, use engineering software to configure EUT WLAN/BT continuously transmission, at maximum RF power in each supported wireless interface and frequency band
- (d) Connect EUT RF port through RF cable to the power meter, and measure WLAN/BT output power

<SAR measurement>

- (a) Use base station simulator to configure EUT WWAN transmission in radiated connection, and engineering software to configure EUT WLAN/BT continuously transmission, at maximum RF power, in the highest power channel.
- (b) Place the EUT in the positions as Appendix D demonstrates.
- (c) Set scan area, grid size and other setting on the DASY software.
- (d) Measure SAR results for the highest power channel on each testing position.
- (e) Find out the largest SAR result on these testing positions of each band
- (f) Measure SAR results for other channels in worst SAR testing position if the reported SAR of highest power channel is larger than 0.8 W/kg

According to the test standard, the recommended procedure for assessing the peak spatial-average SAR value consists of the following steps:

- (a) Power reference measurement
- (b) Area scan
- (c) Zoom scan
- (d) Power drift measurement

8.1 Spatial Peak SAR Evaluation

The procedure for spatial peak SAR evaluation has been implemented according to the test standard. It can be conducted for 1g and 10g, as well as for user-specific masses. The DASY software includes all numerical procedures necessary to evaluate the spatial peak SAR value.

The base for the evaluation is a "cube" measurement. The measured volume must include the 1g and 10g cubes with the highest averaged SAR values. For that purpose, the center of the measured volume is aligned to the interpolated peak SAR value of a previously performed area scan.

The entire evaluation of the spatial peak values is performed within the post-processing engine (SEMCAD). The system always gives the maximum values for the 1g and 10g cubes. The algorithm to find the cube with highest averaged SAR is divided into the following stages:

- (a) Extraction of the measured data (grid and values) from the Zoom Scan
- (b) Calculation of the SAR value at every measurement point based on all stored data (A/D values and measurement parameters)
- (c) Generation of a high-resolution mesh within the measured volume
- (d) Interpolation of all measured values from the measurement grid to the high-resolution grid
- (e) Extrapolation of the entire 3-D field distribution to the phantom surface over the distance from sensor to surface
- (f) Calculation of the averaged SAR within masses of 1g and 10g

8.2 Power Reference Measurement

The Power Reference Measurement and Power Drift Measurements are for monitoring the power drift of the device under test in the batch process. The minimum distance of probe sensors to surface determines the closest measurement point to phantom surface. This distance cannot be smaller than the distance of sensor calibration points to probe tip as defined in the probe properties.

8.3 Area Scan

The area scan is used as a fast scan in two dimensions to find the area of high field values, before doing a fine measurement around the hot spot. The sophisticated interpolation routines implemented in DASY software can find the maximum found in the scanned area, within a range of the global maximum. The range (in dB0 is specified in the standards for compliance testing. For example, a 2 dB range is required in IEEE standard 1528 and IEC 62209 standards, whereby 3 dB is a requirement when compliance is assessed in accordance with the ARIB standard (Japan), if only one zoom scan follows the area scan, then only the absolute maximum will be taken as reference. For cases where multiple maximums are detected, the number of zoom scans has to be increased accordingly.

Area scan parameters extracted from FCC KDB 865664 D01v01r04 SAR measurement 100 MHz to 6 GHz.

	≤ 3 GHz	> 3 GHz
Maximum distance from closest measurement point (geometric center of probe sensors) to phantom surface	5 ± 1 mm	$\frac{1}{2} \cdot \delta \cdot \ln(2) \pm 0.5$ mm
Maximum probe angle from probe axis to phantom surface normal at the measurement location	$30^\circ \pm 1^\circ$	$20^\circ \pm 1^\circ$
Maximum area scan spatial resolution: $\Delta x_{Area}, \Delta y_{Area}$	≤ 2 GHz: ≤ 15 mm 2 – 3 GHz: ≤ 12 mm	3 – 4 GHz: ≤ 12 mm 4 – 6 GHz: ≤ 10 mm
	When the x or y dimension of the test device, in the measurement plane orientation, is smaller than the above, the measurement resolution must be \leq the corresponding x or y dimension of the test device with at least one measurement point on the test device.	

8.4 Zoom Scan

Zoom scans are used to assess the peak spatial SAR values within a cubic averaging volume containing 1 gram and 10 gram of simulated tissue. The zoom scan measures points (refer to table below) within a cube whose base faces are centered on the maxima found in a preceding area scan job within the same procedure. When the measurement is done, the zoom scan evaluates the averaged SAR for 1 gram and 10 gram and displays these values next to the job's label.

Zoom scan parameters extracted from FCC KDB 865664 D01v01r04 SAR measurement 100 MHz to 6 GHz.

		≤ 3 GHz	> 3 GHz	
Maximum zoom scan spatial resolution: Δx_{Zoom} , Δy_{Zoom}		≤ 2 GHz: ≤ 8 mm 2 – 3 GHz: ≤ 5 mm*	3 – 4 GHz: ≤ 5 mm* 4 – 6 GHz: ≤ 4 mm*	
Maximum zoom scan spatial resolution, normal to phantom surface	uniform grid: $\Delta z_{Zoom}(n)$	≤ 5 mm	3 – 4 GHz: ≤ 4 mm 4 – 5 GHz: ≤ 3 mm 5 – 6 GHz: ≤ 2 mm	
	graded grid	$\Delta z_{Zoom}(1)$: between 1 st two points closest to phantom surface	≤ 4 mm	3 – 4 GHz: ≤ 3 mm 4 – 5 GHz: ≤ 2.5 mm 5 – 6 GHz: ≤ 2 mm
		$\Delta z_{Zoom}(n>1)$: between subsequent points	$\leq 1.5 \cdot \Delta z_{Zoom}(n-1)$	
Minimum zoom scan volume	x, y, z	≥ 30 mm	3 – 4 GHz: ≥ 28 mm 4 – 5 GHz: ≥ 25 mm 5 – 6 GHz: ≥ 22 mm	
Note: δ is the penetration depth of a plane-wave at normal incidence to the tissue medium; see draft standard IEEE P1528-2011 for details. * When zoom scan is required and the <i>reported</i> SAR from the <i>area scan based 1-g SAR estimation</i> procedures of KDB 447498 is ≤ 1.4 W/kg, ≤ 8 mm, ≤ 7 mm and ≤ 5 mm zoom scan resolution may be applied, respectively, for 2 GHz to 3 GHz, 3 GHz to 4 GHz and 4 GHz to 6 GHz.				

8.5 Volume Scan Procedures

The volume scan is used to assess overlapping SAR distributions for antennas transmitting in different frequency bands. It is equivalent to an oversized zoom scan used in standalone measurements. The measurement volume will be used to enclose all the simultaneous transmitting antennas. For antennas transmitting simultaneously in different frequency bands, the volume scan is measured separately in each frequency band. In order to sum correctly to compute the 1g aggregate SAR, the EUT remain in the same test position for all measurements and all volume scan use the same spatial resolution and grid spacing. When all volume scan were completed, the software, SEMCAD postprocessor can combine and subsequently superpose these measurement data to calculating the multiband SAR.

8.6 Power Drift Monitoring

All SAR testing is under the EUT install full charged battery and transmit maximum output power. In DASYS measurement software, the power reference measurement and power drift measurement procedures are used for monitoring the power drift of EUT during SAR test. Both these procedures measure the field at a specified reference position before and after the SAR testing. The software will calculate the field difference in dB. If the power drifts more than 5%, the SAR will be retested.



9. Test Equipment List

Manufacturer	Name of Equipment	Type/Model	Serial Number	Calibration	
				Last Cal.	Due Date
SPEAG	835MHz System Validation Kit	D835V2	4d151	2019/3/27	2022/3/26
SPEAG	1750MHz System Validation Kit	D1750V2	1090	2019/3/27	2022/3/26
SPEAG	1900MHz System Validation Kit	D1900V2	5d170	2019/3/26	2022/3/25
SPEAG	2450MHz System Validation Kit	D2450V2	908	2019/3/25	2022/3/24
SPEAG	2600MHz System Validation Kit	D2600V2	1061	2020/11/26	2021/11/25
SPEAG	Data Acquisition Electronics	DAE4	1303	2020/7/7	2021/7/6
SPEAG	Dosimetric E-Field Probe	ES3DV3	3293	2020/9/23	2021/9/22
SPEAG	ELI4 Phantom	QD 0VA 001 BB	TP-1503	NCR	NCR
SPEAG	Phone Positioner	N/A	N/A	NCR	NCR
Anritsu	Radio Communication Analyzer	MT8821C	6201432831	2020/4/17	2021/4/16
Agilent	Wireless Communication Test Set	E5515C	MY52102706	2020/4/17	2021/4/16
Agilent	ENA Series Network Analyzer	E5071C	MY46111157	2020/4/17	2021/4/16
SPEAG	Dielectric Probe Kit	DAK-3.5	1071	2020/10/28	2021/10/27
Anritsu	Vector Signal Generator	MG3710A	6201682672	2020/1/8	2021/1/7
Rohde & Schwarz	Power Meter	NRVD	102081	2020/8/15	2021/8/14
Rohde & Schwarz	Power Sensor	NRV-Z5	100538	2020/8/14	2021/8/13
Rohde & Schwarz	Power Sensor	NRV-Z5	100539	2020/8/14	2021/8/13
R&S	CBT BLUETOOTH TESTER	CBT	101641	2020/1/8	2021/1/7
EXA	Spectrum Analyzer	FSV7	101631	2020/1/8	2021/1/7
Testo	Hygrometer	608-H1	1241332088	2020/1/8	2021/1/7
FLUKE	DIGITAC THERMOMETER	51II	97240029	2020/8/15	2021/8/14
BONN	POWER AMPLIFIER	BLMA 0830-3	087193A	Note 1	
BONN	POWER AMPLIFIER	BLMA 2060-2	087193B	Note 1	
ARRA	Power Divider	A3200-2	N/A	Note 1	
MCL	Attenuation1	BW-S10W5+	N/A	Note 1	
MCL	Attenuation2	BW-S10W5+	N/A	Note 1	
MCL	Attenuation3	BW-S10W5+	N/A	Note 1	
Agilent	Dual Directional Coupler	778D	20500	Note 1	
Agilent	Dual Directional Coupler	11691D	MY48151020	Note 1	

Note:

1. Prior to system verification and validation, the path loss from the signal generator to the system check source and the power meter, which includes the amplifier, cable, attenuator and directional coupler, was measured by the network analyzer. The reading of the power meter was offset by the path loss difference between the path to the power meter and the path to the system check source to monitor the actual power level fed to the system check
2. Referring to KDB 865664 D01v01r04, the dipole calibration interval can be extended to 3 years with justification. The dipoles are also not physically damaged, or repaired during the interval.
3. The justification data of dipole can be found in appendix C. The return loss is < -20dB, within 20% of prior calibration, the impedance is within 5 ohm of prior calibration.

10. System Verification

10.1 Tissue Simulating Liquids

For the measurement of the field distribution inside the SAM phantom with DASY, the phantom must be filled with around 25 liters of homogeneous body tissue simulating liquid. For head SAR testing, the liquid height from the ear reference point (ERP) of the phantom to the liquid top surface is larger than 15 cm, which is shown in Fig. 10.1. For body SAR testing, the liquid height from the center of the flat phantom to the liquid top surface is larger than 15 cm, which is shown in Fig. 10.2.

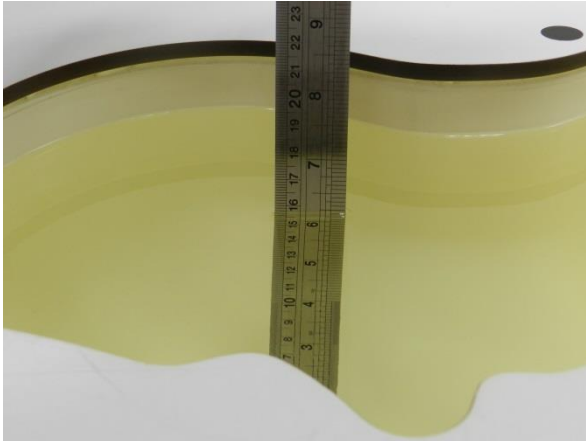


Fig 10.1 Photo of Liquid Height for Head SAR

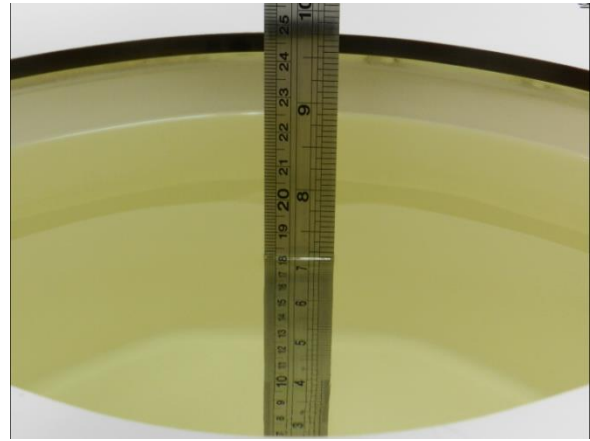


Fig 10.2 Photo of Liquid Height for Body SAR

10.2 Tissue Verification

The following tissue formulations are provided for reference only as some of the parameters have not been thoroughly verified. The composition of ingredients may be modified accordingly to achieve the desired target tissue parameters required for routine SAR evaluation.

Frequency (MHz)	Water (%)	Sugar (%)	Cellulose (%)	Salt (%)	Preventol (%)	DGBE (%)	Conductivity (σ)	Permittivity (ϵ_r)
For Head								
835	40.3	57.9	0.2	1.4	0.2	0	0.90	41.5
1800, 1900, 2000	55.2	0	0	0.3	0	44.5	1.40	40.0
2450	55.0	0	0	0	0	45.0	1.80	39.2
2600	54.8	0	0	0.1	0	45.1	1.96	39.0

<Tissue Dielectric Parameter Check Results>

Frequency (MHz)	Tissue Type	Liquid Temp. ($^{\circ}$ C)	Conductivity (σ)	Permittivity (ϵ_r)	Conductivity Target (σ)	Permittivity Target (ϵ_r)	Delta (σ) (%)	Delta (ϵ_r) (%)	Limit (%)	Date
835	Head	22.6	0.902	41.838	0.90	41.50	0.22	0.81	± 5	2020/12/7
1750	Head	22.9	1.351	40.380	1.37	40.10	-1.39	0.70	± 5	2020/12/12
1900	Head	22.8	1.440	39.304	1.40	40.00	2.86	-1.74	± 5	2020/12/17
2450	Head	22.9	1.808	38.576	1.80	39.20	0.44	-1.59	± 5	2020/12/20
2600	Head	22.7	1.927	38.270	1.96	39.00	-1.68	-1.87	± 5	2020/12/23

10.3 System Performance Check Results

Comparing to the original SAR value provided by SPEAG, the verification data should be within its specification of 10 %. Below table shows the target SAR and measured SAR after normalized to 1W input power. The table below indicates the system performance check can meet the variation criterion and the plots can be referred to Appendix A of this report.

<1g SAR>

Date	Frequency (MHz)	Tissue Type	Input Power (mW)	Dipole S/N	Probe S/N	DAE S/N	Measured 1g SAR (W/kg)	Targeted 1g SAR (W/kg)	Normalized 1g SAR (W/kg)	Deviation (%)
2020/12/7	835	Head	250	4d151	3293	1303	2.36	9.30	9.44	1.51
2020/12/12	1750	Head	250	1090	3293	1303	8.63	36.40	34.52	-5.16
2020/12/17	1900	Head	250	5d170	3293	1303	10.20	39.00	40.8	4.62
2020/12/20	2450	Head	250	908	3293	1303	12.30	52.80	49.2	-6.82
2020/12/23	2600	Head	250	1061	3293	1303	13.30	56.60	53.2	-6.01

<10g SAR>

Date	Frequency (MHz)	Tissue Type	Input Power (mW)	Dipole S/N	Probe S/N	DAE S/N	Measured 10g SAR (W/kg)	Targeted 10g SAR (W/kg)	Normalized 10g SAR (W/kg)	Deviation (%)
2020/12/12	1750	Head	250	1090	3293	1303	4.73	19.20	18.92	-1.46
2020/12/17	1900	Head	250	5d170	3293	1303	5.44	20.30	21.76	7.19
2020/12/23	2600	Head	250	1061	3293	1303	6.16	25.10	24.64	-1.83

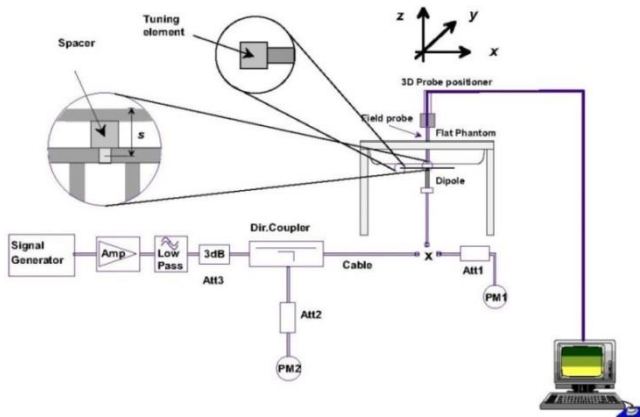


Fig 11.3.1 System Performance Check Setup



Fig 11.3.2 Setup Photo

11. RF Exposure Positions

11.1 Ear and handset reference point

Figure 12.1.1 shows the front, back, and side views of the SAM phantom. The center-of-mouth reference point is labeled “M,” the left ear reference point (ERP) is marked “LE,” and the right ERP is marked “RE.” Each ERP is 15 mm along the B-M (back-mouth) line behind the entrance-to-ear-canal (EEC) point, as shown in Figure 12.1.2 The Reference Plane is defined as passing through the two ear reference points and point M. The line N-F (neck-front), also called the reference pivoting line, is normal to the Reference Plane and perpendicular to both a line passing through RE and LE and the B-M line (see Figure 12.1.3). Both N-F and B-M lines should be marked on the exterior of the phantom shell to facilitate handset positioning. Posterior to the N-F line the ear shape is a flat surface with 6 mm thickness at each ERP, and forward of the N-F line the ear is truncated, as illustrated in Figure 12.1.2. The ear truncation is introduced to preclude the ear lobe from interfering with handset tilt, which could lead to unstable positioning at the cheek.

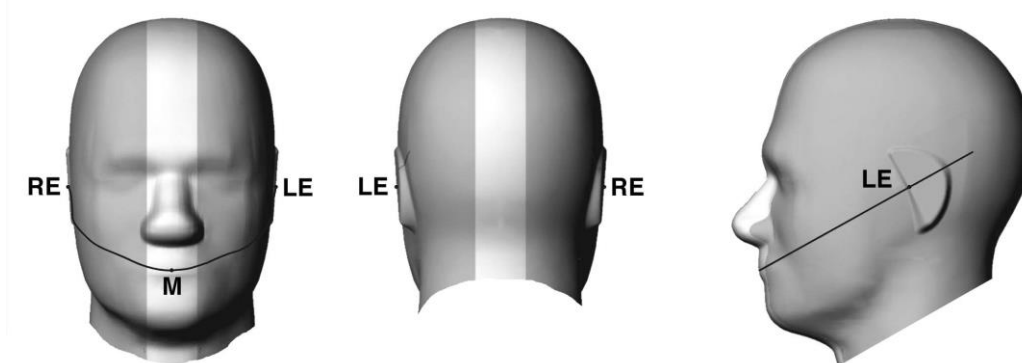


Fig 12.1.1 Front, back, and side views of SAM twin phantom

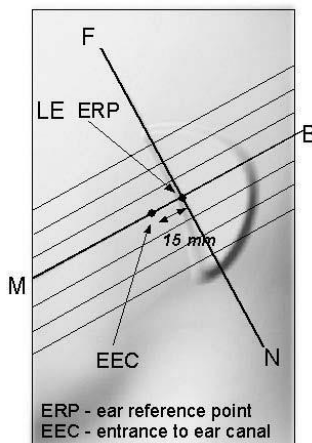


Fig 12.1.2 Close-up side view of phantom showing the ear region.

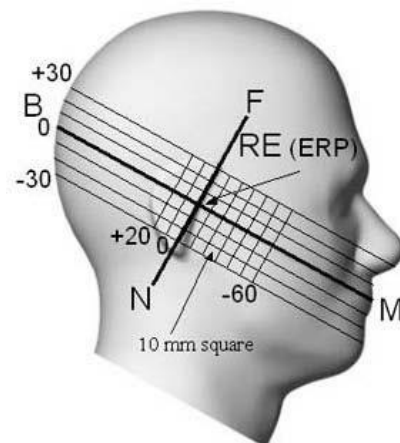


Fig 12.1.3 Side view of the phantom showing relevant markings and seven cross-sectional plane locations

11.2 Definition of the cheek position

1. Ready the handset for talk operation, if necessary. For example, for handsets with a cover piece (flip cover), open the cover. If the handset can transmit with the cover closed, both configurations must be tested.
2. Define two imaginary lines on the handset—the vertical centerline and the horizontal line. The vertical centerline passes through two points on the front side of the handset—the midpoint of the width w_t of the handset at the level of the acoustic output (point A in Figure 12.2.1 and Figure 12.2.2), and the midpoint of the width w_b of the bottom of the handset (point B). The horizontal line is perpendicular to the vertical centerline and passes through the center of the acoustic output (see Figure 12.2.1). The two lines intersect at point A. Note that for many handsets, point A coincides with the center of the acoustic output; however, the acoustic output may be located elsewhere on the horizontal line. Also note that the vertical centerline is not necessarily parallel to the front face of the handset (see Figure 12.2.2), especially for clamshell handsets, handsets with flip covers, and other irregularly-shaped handsets.
3. Position the handset close to the surface of the phantom such that point A is on the (virtual) extension of the line passing through points RE and LE on the phantom (see Figure 12.2.3), such that the plane defined by the vertical centerline and the horizontal line of the handset is approximately parallel to the sagittal plane of the phantom.
4. Translate the handset towards the phantom along the line passing through RE and LE until handset point A touches the pinna at the ERP.
5. While maintaining the handset in this plane, rotate it around the LE-RE line until the vertical centerline is in the plane normal to the plane containing B-M and N-F lines, i.e., the Reference Plane.
6. Rotate the handset around the vertical centerline until the handset (horizontal line) is parallel to the N-F line.
7. While maintaining the vertical centerline in the Reference Plane, keeping point A on the line passing through RE and LE, and maintaining the handset contact with the pinna, rotate the handset about the N-F line until any point on the handset is in contact with a phantom point below the pinna on the cheek. See Figure 12.2.3. The actual rotation angles should be documented in the test report.

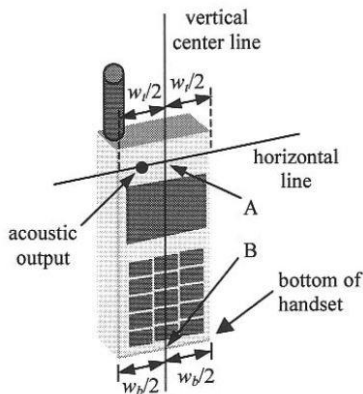


Fig 12.2.1 Handset vertical and horizontal reference lines—“fixed case”

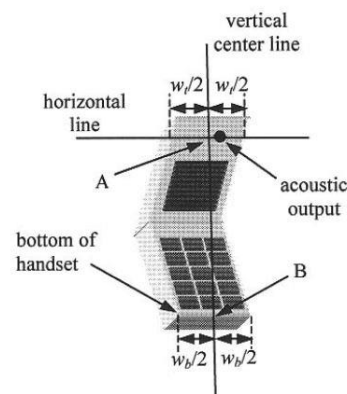


Fig 12.2.2 Handset vertical and horizontal reference lines—“clam-shell case”

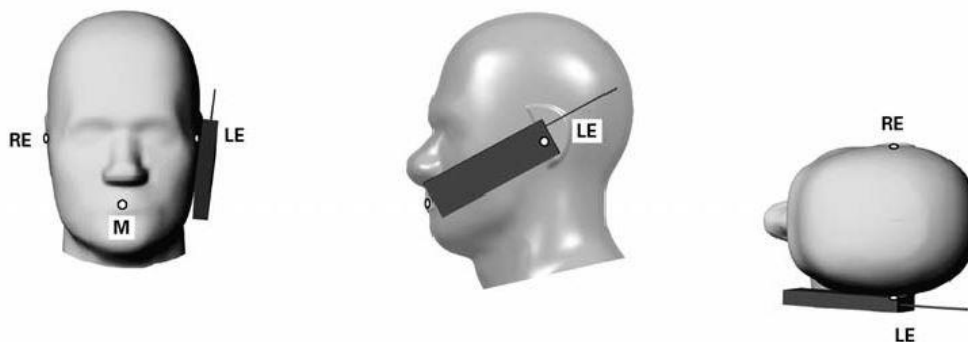


Fig 12.2.3 cheek or touch position. The reference points for the right ear (RE), left ear (LE), and mouth (M), which establish the Reference Plane for handset positioning, are indicated.

11.3 Definition of the tilt position

1. Ready the handset for talk operation, if necessary. For example, for handsets with a cover piece (flip cover), open the cover. If the handset can transmit with the cover closed, both configurations must be tested.
2. While maintaining the orientation of the handset, move the handset away from the pinna along the line passing through RE and LE far enough to allow a rotation of the handset away from the cheek by 15°.
3. Rotate the handset around the horizontal line by 15°.
4. While maintaining the orientation of the handset, move the handset towards the phantom on the line passing through RE and LE until any part of the handset touches the ear. The tilt position is obtained when the contact point is on the pinna. See Figure 12.3.1. If contact occurs at any location other than the pinna, e.g., the antenna at the back of the phantom head, the angle of the handset should be reduced. In this case, the tilt position is obtained if any point on the handset is in contact with the pinna and a second point

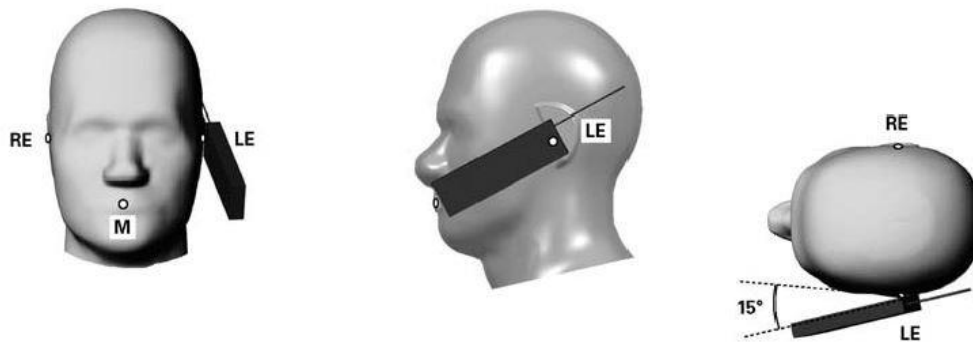


Fig 12.3.1 Tilt position. The reference points for the right ear (RE), left ear (LE), and mouth (M), which define the Reference Plane for handset positioning, are indicated.

11.4 Body Worn Accessory

Body-worn operating configurations are tested with the belt-clips and holsters attached to the device and positioned against a flat phantom in a normal use configuration (see Figure 12.4). Per KDB648474 D04v01r03, body-worn accessory exposure is typically related to voice mode operations when handsets are carried in body-worn accessories. The body-worn accessory procedures in FCC KDB 447498 D01v06 should be used to test for body-worn accessory SAR compliance, without a headset connected to it. This enables the test results for such configuration to be compatible with that required for hotspot mode when the body-worn accessory test separation distance is greater than or equal to that required for hotspot mode, when applicable. When the reported SAR for body-worn accessory, measured without a headset connected to the handset is $> 1.2 \text{ W/kg}$, the highest reported SAR configuration for that wireless mode and frequency band should be repeated for that body-worn accessory with a headset attached to the handset.

Accessories for body-worn operation configurations are divided into two categories: those that do not contain metallic components and those that do contain metallic components. When multiple accessories that do not contain metallic components are supplied with the device, the device is tested with only the accessory that dictates the closest spacing to the body. Then multiple accessories that contain metallic components are tested with the device with each accessory. If multiple accessories share an identical metallic component (i.e. the same metallic belt-clip used with different holsters with no other metallic components) only the accessory that dictates the closest spacing to the body is tested.

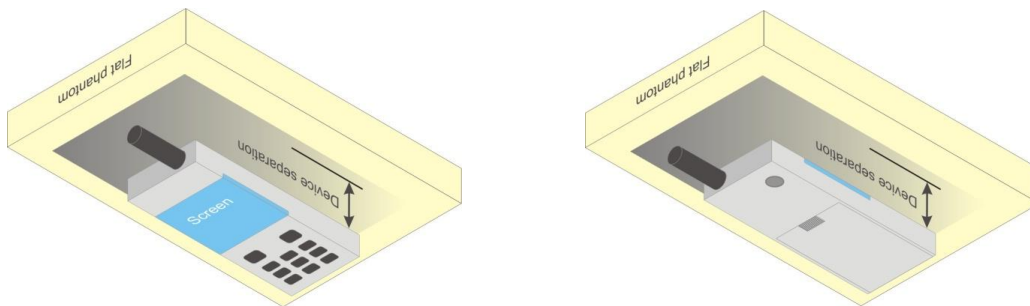


Fig 12.4 Body Worn Position



11.5 Product Specific 10g SAR Exposure

For smart phones with a display diagonal dimension > 15.0 cm or an overall diagonal dimension > 16.0 cm that provide similar mobile web access and multimedia support found in mini-tablets or UMPC mini-tablets that support voice calls next to the ear, According to KDB648474 D04v01r03, the following phablet procedures should be applied to evaluate SAR compliance for each applicable wireless modes and frequency band. Devices marketed as phablets, regardless of form factors and operating characteristics must be tested as a phablet to determine SAR compliance

1. The normally required head and body-worn accessory SAR test procedures for handsets, including hotspot mode, must be applied.
2. The UMPC mini-tablet procedures must also be applied to test the SAR of all surfaces and edges with an antenna located at ≤ 25 mm from that surface or edge, in direct contact with a flat phantom, for 10-g extremity SAR according to the body-equivalent tissue dielectric parameters in KDB 865664 to address interactive hand use exposure conditions.6 The UMPC mini-tablet 1-g SAR at 5 mm is not required. When hotspot mode applies, 10-g extremity SAR is required only for the surfaces and edges with hotspot mode 1-g reported SAR > 1.2 W/kg.

11.6 Wireless Router

Some battery-operated handsets have the capability to transmit and receive user through simultaneous transmission of WIFI simultaneously with a separate licensed transmitter. The FCC has provided guidance in FCC KDB Publication 941225 D06 v02r01 where SAR test considerations for handsets ($L \times W \geq 9$ cm x 5 cm) are based on a composite test separation distance of 10mm from the front, back and edges of the device containing transmitting antennas within 2.5cm of their edges, determined from general mixed use conditions for this type of devices. Since the hotspot SAR results may overlap with the body-worn accessory SAR requirements, the more conservative configurations can be considered, thus excluding some body-worn accessory SAR tests.

When the user enables the personal wireless router functions for the handset, actual operations include simultaneous transmission of both the WIFI transmitter and another licensed transmitter. Both transmitters often do not transmit at the same transmitting frequency and thus cannot be evaluated for SAR under actual use conditions due to the limitations of the SAR assessment probes. Therefore, SAR must be evaluated for each frequency transmission and mode separately and spatially summed with the WIFI transmitter according to FCC KDB Publication 447498 D01v06 publication procedures. The "Portable Hotspot" feature on the handset was NOT activated during SAR assessments, to ensure the SAR measurements were evaluated for a single transmission frequency RF signal at a time.



12. Conducted RF Output Power (Unit: dBm)

The detailed conducted power table can refer to Appendix E.

<GSM Conducted Power>

1. Per KDB 447498 D01v06, the maximum output power channel is used for SAR testing and for further SAR test reduction.
2. Per KDB 941225 D01v03r01, for SAR test reduction for GSM / GPRS / EDGE modes is determined by the source-based time-averaged output power including tune-up tolerance. The mode with highest specified time-averaged output power should be tested for SAR compliance in the applicable exposure conditions. For modes with the same specified maximum output power and tolerance, the higher number time-slot configuration should be tested. Therefore, the GPRS 4Tx slots for GSM850/GSM1900 are considered as the primary mode.
3. Other configurations of GSM / GPRS / EDGE are considered as secondary modes. The 3G SAR test reduction procedure is applied, when the maximum output power and tune-up tolerance specified for production units in a secondary mode is $\leq \frac{1}{4}$ dB higher than the primary mode, SAR measurement is not required for the secondary mode.

<WCDMA Conducted Power>

1. The following tests were conducted according to the test requirements outlines in 3GPP TS 34.121 specification.
2. The procedures in KDB 941225 D01v03r01 are applied for 3GPP Rel. 6 HSPA to configure the device in the required sub-test mode(s) to determine SAR test exclusion.
3. For HSPA+ devices supporting 16 QAM in the uplink, power measurements procedure is according to the configurations in Table C.11.1.4 of 3GPP TS 34.121-1.
4. For DC-HSDPA, the device was configured according to the H-Set 12, Fixed Reference Channel (FRC) configuration in Table C.8.1.12 of 3GPP TS 34.121-1, with the primary and the secondary serving HS-DSCH Cell enabled during the power measurement.

A summary of these settings are illustrated below:

HSDPA Setup Configuration:

- a. The EUT was connected to Base Station Agilent E5515C referred to the Setup Configuration.
- b. The RF path losses were compensated into the measurements.
- c. A call was established between EUT and Base Station with following setting:
 - i. Set Gain Factors (β_c and β_d) and parameters were set according to each
 - ii. Specific sub-test in the following table, C10.1.4, quoted from the TS 34.121
 - iii. Set RMC 12.2Kbps + HSDPA mode.
 - iv. Set Cell Power = -86 dBm
 - v. Set HS-DSCH Configuration Type to FRC (H-set 1, QPSK)
 - vi. Select HSDPA Uplink Parameters
 - vii. Set Delta ACK, Delta NACK and Delta CQI = 8
 - viii. Set Ack-Nack Repetition Factor to 3
 - ix. Set CQI Feedback Cycle (k) to 4 ms
 - x. Set CQI Repetition Factor to 2
 - xi. Power Ctrl Mode = All Up bits
- d. The transmitted maximum output power was recorded.

Table C.10.1.4: β values for transmitter characteristics tests with HS-DPCCH

Sub-test	β_c	β_d	β_d (SF)	β_c/β_d	β_{HS} (Note 1, Note 2)	CM (dB) (Note 3)	MPR (dB) (Note 3)
1	2/15	15/15	64	2/15	4/15	0.0	0.0
2	12/15 (Note 4)	15/15 (Note 4)	64	12/15 (Note 4)	24/15	1.0	0.0
3	15/15	8/15	64	15/8	30/15	1.5	0.5
4	15/15	4/15	64	15/4	30/15	1.5	0.5

Note 1: Δ_{ACK} , Δ_{NACK} and $\Delta_{CQI} = 30/15$ with $\beta_{HS} = 30/15 * \beta_c$.

Note 2: For the HS-DPCCH power mask requirement test in clause 5.2C, 5.7A, and the Error Vector Magnitude (EVM) with HS-DPCCH test in clause 5.13.1A, and HSDPA EVM with phase discontinuity in clause 5.13.1AA, Δ_{ACK} and $\Delta_{NACK} = 30/15$ with $\beta_{HS} = 30/15 * \beta_c$, and $\Delta_{CQI} = 24/15$ with $\beta_{HS} = 24/15 * \beta_c$.

Note 3: CM = 1 for $\beta_c/\beta_d = 12/15$, $\beta_{HS}/\beta_c = 24/15$. For all other combinations of DPDCCH, DPCCH and HS-DPCCH the MPR is based on the relative CM difference. This is applicable for only UEs that support HSDPA in release 6 and later releases.

Note 4: For subtest 2 the β_c/β_d ratio of 12/15 for the TFC during the measurement period (TF1, TF0) is achieved by setting the signalled gain factors for the reference TFC (TF1, TF1) to $\beta_c = 11/15$ and $\beta_d = 15/15$.

Setup Configuration

HSUPA Setup Configuration:

- a. The EUT was connected to Base Station Agilent E5515C referred to the Setup Configuration.
- b. The RF path losses were compensated into the measurements.
- c. A call was established between EUT and Base Station with following setting * :
 - i. Call Configs = 5.2B, 5.9B, 5.10B, and 5.13.2B with QPSK
 - ii. Set the Gain Factors (β_c and β_d) and parameters (AG Index) were set according to each specific sub-test in the following table, C11.1.3, quoted from the TS 34.121
 - iii. Set Cell Power = -86 dBm
 - iv. Set Channel Type = 12.2k + HSPA
 - v. Set UE Target Power
 - vi. Power Ctrl Mode= Alternating bits
 - vii. Set and observe the E-TFCI
 - viii. Confirm that E-TFCI is equal to the target E-TFCI of 75 for sub-test 1, and other subtest's E-TFCI
- d. The transmitted maximum output power was recorded.

Table C.11.1.3: β values for transmitter characteristics tests with HS-DPCCH and E-DCH

Sub-test	β_c	β_d	β_d (SF)	β_c/β_d	β_{HS} (Note1)	β_{ec}	β_{ed} (Note 4) (Note 5)	β_{ed} (SF)	β_{ed} (Codes)	CM (dB) (Note 2)	MPR (dB) (Note 2) (Note 6)	AG Index (Note 5)	E-TFCI
1	11/15 (Note 3)	15/15 (Note 3)	64	11/15 (Note 3)	22/15	209/25	1309/225	4	1	1.0	0.0	20	75
2	6/15	15/15	64	6/15	12/15	12/15	94/75	4	1	3.0	2.0	12	67
3	15/15	9/15	64	15/9	30/15	30/15	β_{ed1} : 47/15 β_{ed2} : 47/15	4 4	2	2.0	1.0	15	92
4	2/15	15/15	64	2/15	4/15	2/15	56/75	4	1	3.0	2.0	17	71
5	15/15	0	-	-	5/15	5/15	47/15	4	1	1.0	0.0	12	67

Note 1: For sub-test 1 to 4, Δ_{ACK} , Δ_{NACK} and $\Delta_{CQI} = 30/15$ with $\beta_{hs} = 30/15 * \beta_c$. For sub-test 5, Δ_{ACK} , Δ_{NACK} and $\Delta_{CQI} = 5/15$ with $\beta_{hs} = 5/15 * \beta_c$.

Note 2: CM = 1 for $\beta_c/\beta_d = 12/15$, $\beta_{hs}/\beta_c = 24/15$. For all other combinations of DPDCH, DPCCH, HS- DPCCH, E-DPDCH and E-DPCCH the MPR is based on the relative CM difference.

Note 3: For subtest 1 the β_c/β_d ratio of 11/15 for the TFC during the measurement period (TF1, TF0) is achieved by setting the signalled gain factors for the reference TFC (TF1, TF0) to $\beta_c = 10/15$ and $\beta_d = 15/15$.

Note 4: In case of testing by UE using E-DPDCH Physical Layer category 1, Sub-test 3 is omitted according to TS25.306 Table 5.1g.

Note 5: β_{ed} can not be set directly; it is set by Absolute Grant Value.

Note 6: For subtests 2, 3 and 4, UE may perform E-DPDCH power scaling at max power which could results in slightly smaller MPR values.

Setup Configuration

DC-HSDPA 3GPP release 8 Setup Configuration:

- a. The EUT was connected to Base Station referred to the Setup Configuration below
- b. The RF path losses were compensated into the measurements.
- c. A call was established between EUT and Base Station with following setting:
 - i. Set RMC 12.2Kbps + HSDPA mode.
 - ii. Set Cell Power = -25 dBm
 - iii. Set HS-DSCH Configuration Type to FRC (H-set 12, QPSK)
 - iv. Select HSDPA Uplink Parameters
 - v. Set Gain Factors (β_c and β_d) and parameters were set according to each Specific sub-test in the following table, C10.1.4, quoted from the TS 34.121
 - a). Subtest 1: $\beta_c/\beta_d=2/15$
 - b). Subtest 2: $\beta_c/\beta_d=12/15$
 - c). Subtest 3: $\beta_c/\beta_d=15/8$
 - d). Subtest 4: $\beta_c/\beta_d=15/4$
 - vi. Set Delta ACK, Delta NACK and Delta CQI = 8
 - vii. Set Ack-Nack Repetition Factor to 3
 - viii. Set CQI Feedback Cycle (k) to 4 ms
 - ix. Set CQI Repetition Factor to 2
 - x. Power Ctrl Mode = All Up bits
- d. The transmitted maximum output power was recorded.

The following tests were conducted according to the test requirements outlines in 3GPP TS 34.121 specification. A summary of these settings are illustrated below:

C.8.1.12 Fixed Reference Channel Definition H-Set 12

Table C.8.1.12: Fixed Reference Channel H-Set 12

Parameter	Unit	Value
Nominal Avg. Inf. Bit Rate	kbps	60
Inter-TTI Distance	TTI's	1
Number of HARQ Processes	Processes	6
Information Bit Payload (N_{INF})	Bits	120
Number Code Blocks	Blocks	1
Binary Channel Bits Per TTI	Bits	960
Total Available SML's in UE	SML's	19200
Number of SML's per HARQ Proc.	SML's	3200
Coding Rate		0.15
Number of Physical Channel Codes	Codes	1
Modulation		QPSK
Note 1: The RMC is intended to be used for DC-HSDPA mode and both cells shall transmit with identical parameters as listed in the table. Note 2: Maximum number of transmission is limited to 1, i.e., retransmission is not allowed. The redundancy and constellation version 0 shall be used.		

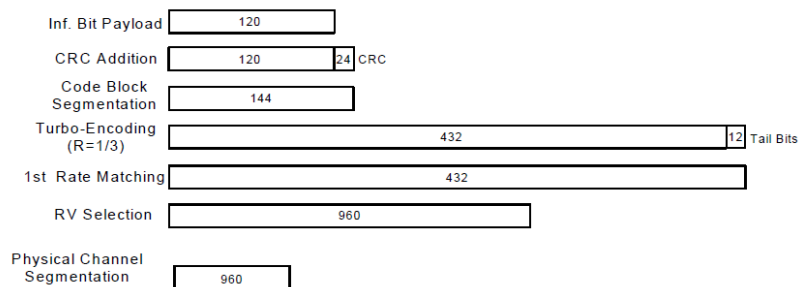


Figure C.8.19: Coding rate for Fixed reference Channel H-Set 12 (QPSK)

Setup Configuration

HSPA+ 3GPP release 7 (uplink category 7) 16QAM, Setup Configuration:

- a. The EUT was connected to Base Station Agilent E5515C referred to the Setup Configuration.
- b. The RF path losses were compensated into the measurements.
- c. A call was established between EUT and Base Station with following setting * :
 - i. Call Configs = 5.2E:HSPA+:UL with 16QAM
 - ii. Set the Gain Factors (β_c and β_d) and parameters (AG Index) were set according to each specific sub-test in the following table, C11.1.4, quoted from the TS 34.121-1 s5.2E
 - iii. Set Channel Parms
 - iv. Set Cell Power = -86 dBm
 - v. Set Channel Type = HSPA
 - vi. Set UE Target Power =21 dBm
 - vii. Power Ctrl Mode= All Up Bits
 - viii. Set Manual Uplink DPCH Bc/Bd = Manual
 - ix. Set Manual Uplink DPCH Bc and Bd=15,15(for 34.121-1 v8.10.0 table C11.1.4 sub-test 1)
 - x. Set HSPA Conn DL Channel Levels
 - xi. Set HS-SCCH Configs
 - xii. Set RB Test Mode Setup
 - xiii. Set Common HSUPA Parameters
 - xiv. Set Serving Grant
 - xv. Confirm that E-TFCI is equal to the target E-TFCI of 105 for sub-test 1, and other subtest's E-TFCI
- d. The transmitted maximum output power was recorded.

Table C.11.1.4: β values for transmitter characteristics tests with HS-DPCCH and E-DCH with 16QAM

Sub-test	β_c (Note3)	β_d	β_{HS} (Note1)	β_{ec}	β_{ed} (2xSF2) (Note 4)	β_{ed} (2xSF4) (Note 4)	CM (dB) (Note 2)	MPR (dB) (Note 2)	AG Index (Note 4)	E-TFCI (Note 5)	E-TFCI (boost)
1	1	0	30/15	30/15	β_{ed1} : 30/15 β_{ed2} : 30/15	β_{ed3} : 24/15 β_{ed4} : 24/15	3.5	2.5	14	105	105

Note 1: $\Delta_{ACK}, \Delta_{NACK}$ and $\Delta_{CQI} = 30/15$ with $\beta_{fs} = 30/15 * \beta_c$.

Note 2: CM = 3.5 and the MPR is based on the relative CM difference, MPR = MAX(CM-1,0).

Note 3: DPDCH is not configured, therefore the β_c is set to 1 and $\beta_d = 0$ by default.

Note 4: β_{ed} can not be set directly; it is set by Absolute Grant Value.

Note 5: All the sub-tests require the UE to transmit 2SF2+2SF4 16QAM EDCH and they apply for UE using E-DPDCH category 7. E-DCH TTI is set to 2ms TTI and E-DCH table index = 2. To support these E-DCH configurations DPDCH is not allocated. The UE is signaled to use the extrapolation algorithm.

Setup Configuration

<WCDMA Conducted Power>

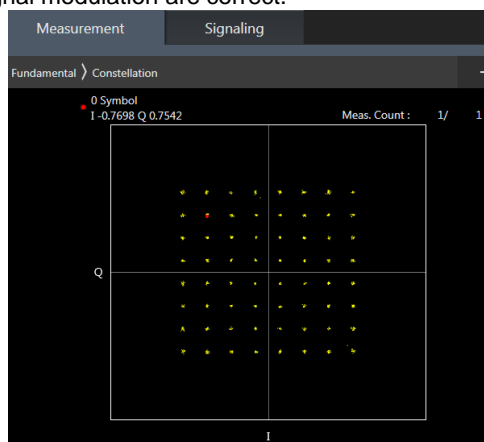
General Note:

1. Per KDB 941225 D01v03r01, for SAR testing is measured using a 12.2 kbps RMC with TPC bits configured to all "1's".
2. Per KDB 941225 D01v03r01, RMC 12.2kbps setting is used to evaluate SAR. The maximum output power and tune-up tolerance specified for production units in HSDPA / HSUPA / DC-HSDPA / HSPA+ is $\leq \frac{1}{4}$ dB higher than RMC 12.2Kbps or when the highest reported SAR of the RMC12.2Kbps is scaled by the ratio of specified maximum output power and tune-up tolerance of HSDPA / HSUPA / DC-HSDPA / HSPA+ to RMC12.2Kbps and the adjusted SAR is ≤ 1.2 W/kg, SAR measurement is not required for HSDPA / HSUPA / DC-HSDPA / HSPA+, and according to the following RF output power, the output power results of the secondary modes (HSDPA / HSUPA / DC-HSDPA / HSPA+) are less than $\frac{1}{4}$ dB higher than the primary modes; therefore, SAR measurement is not required for HSDPA / HSUPA / DC-HSDPA / HSPA+

<LTE Conducted Power>

General Note:

1. Anritsu MT8820C base station simulator was used to setup the connection with EUT; the frequency band, channel bandwidth, RB allocation configuration, modulation type are set in the base station simulator to configure EUT transmitting at maximum power and at different configurations which are requested to be reported to FCC, for conducted power measurement and SAR testing.
2. Per KDB 941225 D05v02r05, when a properly configured base station simulator is used for the SAR and power measurements, spectrum plots for each RB allocation and offset configuration is not required.
3. Per KDB 941225 D05v02r05, start with the largest channel bandwidth and measure SAR for QPSK with 1 RB allocation, using the RB offset and required test channel combination with the highest maximum output power for RB offsets at the upper edge, middle and lower edge of each required test channel.
4. Per KDB 941225 D05v02r05, 50% RB allocation for QPSK SAR testing follows 1RB QPSK allocation procedure.
5. Per KDB 941225 D05v02r05, for QPSK with 100% RB allocation, SAR is not required when the highest maximum output power for 100 % RB allocation is less than the highest maximum output power in 50% and 1 RB allocations and the highest reported SAR for 1 RB and 50% RB allocation are ≤ 0.8 W/kg. Otherwise, SAR is measured for the highest output power channel; and if the reported SAR is > 1.45 W/kg, the remaining required test channels must also be tested.
6. Per KDB 941225 D05v02r05, 16QAM/64QAM output power for each RB allocation configuration is $>$ not $\frac{1}{2}$ dB higher than the same configuration in QPSK and the reported SAR for the QPSK configuration is ≤ 1.45 W/kg; Per KDB 941225 D05v02r05, 16QAM/64QAM SAR testing is not required.
7. Per KDB 941225 D05v02r05, smaller bandwidth output power for each RB allocation configuration is $>$ not $\frac{1}{2}$ dB higher than the same configuration in the largest supported bandwidth, and the reported SAR for the largest supported bandwidth is ≤ 1.45 W/kg; Per KDB 941225 D05v02r05, smaller bandwidth SAR testing is not required.
8. For LTE B4 / B5 the maximum bandwidth does not support three non-overlapping channels, per KDB 941225 D05v02r05, when a device supports overlapping channel assignment in a channel bandwidth configuration, the middle channel of the group of overlapping channels should be selected for testing.
9. LTE B4 SAR test was covered by B66; according to April 2015 TCB workshop, SAR test for overlapping LTE bands can be reduced if
 - a. the maximum output power, including tolerance, for the smaller band is \leq the larger band to qualify for the SAR test exclusion
 - b. the channel bandwidth and other operating parameters for the smaller band are fully supported by the larger band
10. According to 2017 TCB workshop, for 64 QAM and 16 QAM should be verified by checking the signal constellation with a call box to avoid incorrect maximum power levels due to MPR and other requirements associated with signal modulation, and the following figure is taken from the "Fundamental Measurement >> Modulation Analysis >> constellation" mode of the device connect to the MT8821C base station, therefore, the device 64QAM and 16QAM signal modulation are correct.



64QAM



16QAM

<WLAN Conducted Power>

General Note:

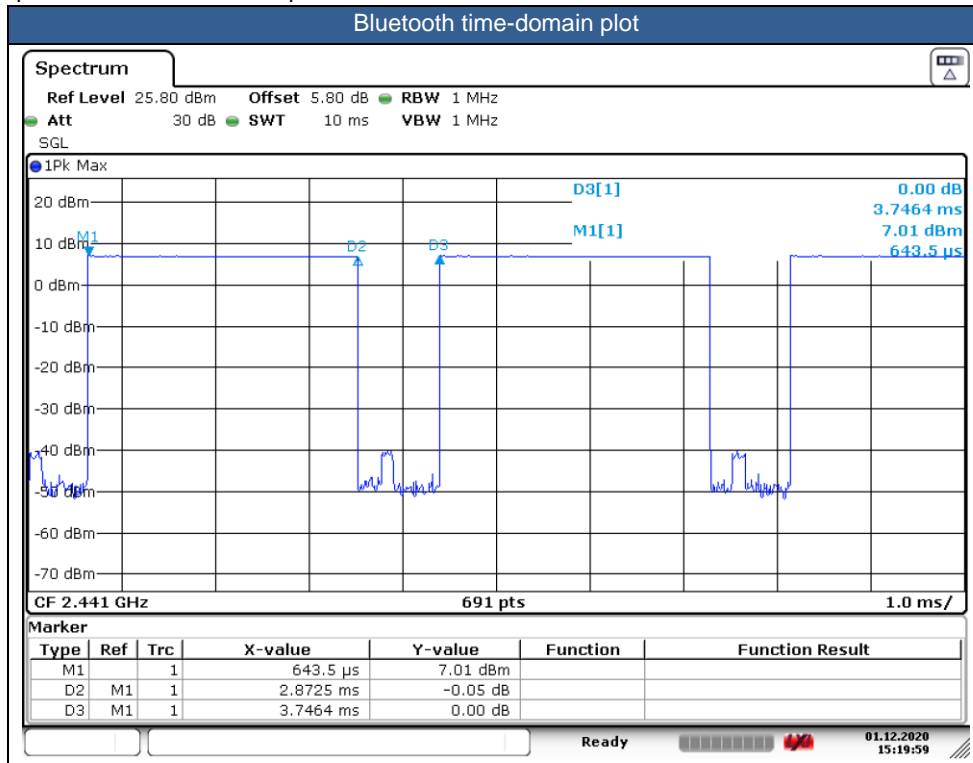
1. Per KDB 248227 D01v02r02, SAR test reduction is determined according to 802.11 transmission mode configurations and certain exposure conditions with multiple test positions. In the 2.4 GHz band, separate SAR procedures are applied to DSSS and OFDM configurations to simplify DSSS test requirements. For OFDM, in both 2.4 and 5 GHz bands, an initial test configuration must be determined for each standalone and aggregated frequency band, according to the transmission mode configuration with the highest maximum output power specified for production units to perform SAR measurements. If the same highest maximum output power applies to different combinations of channel bandwidths, modulations and data rates, additional procedures are applied to determine which test configurations require SAR measurement. When applicable, an initial test position may be applied to reduce the number of SAR measurements required for next to the ear, UMPC mini-tablet or hotspot mode configurations with multiple test positions.
2. For 2.4 GHz 802.11b DSSS, either the initial test position procedure for multiple exposure test positions or the DSSS procedure for fixed exposure position is applied; these are mutually exclusive. For 2.4 GHz and 5 GHz OFDM configurations, the initial test configuration is applied to measure SAR using either the initial test position procedure for multiple exposure test position configurations or the initial test configuration procedures for fixed exposure test conditions. Based on the reported SAR of the measured configurations and maximum output power of the transmission mode configurations that are not included in the initial test configuration, the subsequent test configuration and initial test position procedures are applied to determine if SAR measurements are required for the remaining OFDM transmission configurations. In general, the number of test channels that require SAR measurement is minimized based on maximum output power measured for the test sample(s).
3. For OFDM transmission configurations in the 2.4 GHz and 5 GHz bands, When the same maximum power is specified for multiple transmission modes in a frequency band, the largest channel bandwidth, lowest order modulation, lowest data rate and lowest order 802.11a/g/n/ac mode is used for SAR measurement, on the highest measured output power channel for each frequency band.
4. DSSS and OFDM configurations are considered separately according to the required SAR procedures. SAR is measured in the initial test position using the 802.11 transmission mode configuration required by the DSSS procedure or initial test configuration and subsequent test configuration(s) according to the OFDM procedures.18 The initial test position procedure is described in the following:
 - a. When the reported SAR of the initial test position is ≤ 0.4 W/kg, further SAR measurement is not required for the other test positions in that exposure configuration and 802.11 transmission mode combinations within the frequency band or aggregated band.
 - b. When the reported SAR of the test position is > 0.4 W/kg, SAR is repeated for the 802.11 transmission mode configuration tested in the initial test position to measure the subsequent next closet/smallest test separation distance and maximum coupling test position on the highest maximum output power channel, until the report SAR is ≤ 0.8 W/kg or all required test position are tested.
 - c. For all positions/configurations, when the reported SAR is > 0.8 W/kg, SAR is measured for these test positions/configurations on the subsequent next highest measured output power channel(s) until the reported SAR is ≤ 1.2 W/kg or all required channels are tested.



<2.4GHz Bluetooth>

General Note:

1. For 2.4GHz Bluetooth SAR testing was selected 1Mbps, due to its highest average power.
2. The Bluetooth duty cycle is 76.67 % as following figure, according to 2016 Oct. TCB workshop for Bluetooth SAR scaling need further consideration and the maximum duty cycle is 100%, therefore the actual duty cycle will be scaled up to100% for Bluetooth reported SAR calculation.





13. Antenna Location

The detailed antenna location information can refer to SAR Test Setup Photos.



14. SAR Test Results

General Note:

1. Per KDB 447498 D01v06, the reported SAR is the measured SAR value adjusted for maximum tune-up tolerance.
 - a. Tune-up scaling Factor = tune-up limit power (mW) / EUT RF power (mW), where tune-up limit is the maximum rated power among all production units.
 - b. For SAR testing of WLAN/Bluetooth signal with non-100% duty cycle, the measured SAR is scaled-up by the duty cycle scaling factor which is equal to "1/(duty cycle)"
 - c. For WWAN: Reported SAR(W/kg)= Measured SAR(W/kg)*Tune-up Scaling Factor
 - d. For BT/WLAN: Reported SAR(W/kg)= Measured SAR(W/kg)* Duty Cycle scaling factor * Tune-up scaling factor
2. Per KDB 447498 D01v06, for each exposure position, testing of other required channels within the operating mode of a frequency band is not required when the *reported* 1-g or 10-g SAR for the mid-band or highest output power channel is:
 - ≤ 0.8 W/kg or 2.0 W/kg, for 1-g or 10-g respectively, when the transmission band is ≤ 100 MHz
 - ≤ 0.6 W/kg or 1.5 W/kg, for 1-g or 10-g respectively, when the transmission band is between 100 MHz and 200 MHz
 - ≤ 0.4 W/kg or 1.0 W/kg, for 1-g or 10-g respectively, when the transmission band is ≥ 200 MHz
3. Per KDB 865664 D01v01r04, for each frequency band, repeated SAR measurement is required when the measured SAR is ≥ 0.8 W/kg. Per KDB 865664 D01v01r04, if the extremity repeated SAR is necessary, the same procedures should be adapted for measurements according to extremity and occupational exposure limits by applying a factor of 2.5 for extremity exposure and a factor of 5 for occupational exposure to the corresponding SAR thresholds.
4. Pre KDB648474 D04v01r03, when the reported SAR for a body-worn accessory, measured without a headset connected to the handset, is > 1.2 W/kg, the highest reported SAR configuration for that wireless mode and frequency band should be repeated for that body-worn accessory with a headset attached to the handset. When headset SAR is less than or equal than without headset SAR, no need to verify the remaining channels for headset SAR.
5. The device implements receiver detect mechanism/hotspot trigger reduced power for the power management for SAR compliance at different exposure conditions (head, body-worn, hotspot, extremity). The device will invoke corresponding work scenarios power level, which are provided in the operational description.
6. For Some WWAN bands, Receiver off body-worn power level higher than hotspot reduced power level, so front/back receiver off body-worn SAR can represent hotspot conservatively.
7. Per KDB648474 D04v01r03, for smart phones with a display diagonal dimension > 15.0 cm or an overall diagonal dimension > 16.0 cm, when hotspot mode applies, 10-g extremity SAR is required only for the surfaces and edges with hotspot mode 1-g reported SAR > 1.2 W/kg, however, when power reduction applies to hotspot mode the measured SAR must be scaled to the maximum output power (for handheld on state, the maximum full power means reduced power), including tolerance, allowed for phablet modes to compare with the 1.2 W/kg SAR test reduction threshold.
 - a. For this device SAR for WWAN transmitter scaled to maximum output power mode for product specific 10g SAR is higher than 1.2W/kg of GSM1900, WCDMA Band II/IV, LTE Band 2/4/7/66 therefore product specific 10g SAR is necessary.
 - b. When 10-g product specific 10g SAR is considered, SAR thresholds is specified in the procedures for SAR test reduction and exclusion should be multiplied by 2.5.
8. The device has two headsets, only supplier is different, so we chose headset 1 to perform full SAR testing.
9. The device has three batteries with the same battery capacity, only Manufacturer is different. We only chose battery 1 to perform full SAR testing.
10. There are three samples, please refer the product equality declaration exhibit submitted. According to the difference, we chose sample 1 to perform full SAR testing and sample 2 verified the worst case of sample 1.
11. For dual SIM card mobile has two SIM slots and supports dual SIM dual standby. The WWAN radio transmission will be enabled by either one SIM at a time (single active). After pre-scan two SIM cards power, we found test result of the SIM1 was the worse, so we chose SIM1 slot to perform all tests.
12. "n/a" in the result means the SAR cube is too small to be found.

GSM Note:

1. Per KDB 941225 D01v03r01, for SAR test reduction for GSM / GPRS / EDGE modes is determined by the source-based time-averaged output power including tune-up tolerance. The mode with highest specified time-averaged output power should be tested for SAR compliance in the applicable exposure conditions. For modes with the same specified maximum output power and tolerance, the higher number time-slot configuration should be tested. Therefore, the GPRS 4Tx slots for GSM850/GSM1900 are considered as the primary mode.
2. Other configurations of GSM / GPRS / EDGE are considered as secondary modes. The 3G SAR test reduction procedure is applied, when the maximum output power and tune-up tolerance specified for production units in a secondary mode is \leq ¼ dB higher than the primary mode, SAR measurement is not required for the secondary mode.

WCDMA Note:

1. Per KDB 941225 D01v03r01, for SAR testing is measured using a 12.2 kbps RMC with TPC bits configured to all "1's".
2. Per KDB 941225 D01v03r01, RMC 12.2kbps setting is used to evaluate SAR. The maximum output power and tune-up tolerance specified for production units in HSDPA / HSUPA / DC-HSDPA / HSPA+ is \leq ¼ dB higher than RMC 12.2Kbps or when the highest reported SAR of the RMC12.2Kbps is scaled by the ratio of specified maximum output power and tune-up tolerance of HSDPA / HSUPA / DC-HSDPA / HSPA+ to RMC12.2Kbps and the adjusted SAR is \leq 1.2 W/kg, SAR measurement is not required for HSDPA / HSUPA / DC-HSDPA / HSPA+, and according to the following RF output power, the output power results of the secondary modes (HSDPA / HSUPA / DC-HSDPA / HSPA+) are less than ¼ dB higher than the primary modes; therefore, SAR measurement is not required for HSDPA / HSUPA / DC-HSDPA / HSPA+.

LTE Note:

1. Per KDB 941225 D05v02r05, start with the largest channel bandwidth and measure SAR for QPSK with 1 RB allocation, using the RB offset and required test channel combination with the highest maximum output power for RB offsets at the upper edge, middle and lower edge of each required test channel.
2. Per KDB 941225 D05v02r05, 50% RB allocation for QPSK SAR testing follows 1RB QPSK allocation procedure.
3. Per KDB 941225 D05v02r05, for QPSK with 100% RB allocation, SAR is not required when the highest maximum output power for 100 % RB allocation is less than the highest maximum output power in 50% and 1 RB allocations and the highest reported SAR for 1 RB and 50% RB allocation are \leq 0.8 W/kg. Otherwise, SAR is measured for the highest output power channel; and if the reported SAR is $>$ 1.45 W/kg, the remaining required test channels must also be tested.
4. Per KDB 941225 D05v02r05, 16QAM/64QAM output power for each RB allocation configuration is $>$ not ½ dB higher than the same configuration in QPSK and the reported SAR for the QPSK configuration is \leq 1.45 W/kg; Per KDB 941225 D05v02r05, 16QAM/64QAM SAR testing is not required.
5. Per KDB 941225 D05v02r05, smaller bandwidth output power for each RB allocation configuration is $>$ not ½ dB higher than the same configuration in the largest supported bandwidth, and the reported SAR for the largest supported bandwidth is \leq 1.45 W/kg; Per KDB 941225 D05v02r05, smaller bandwidth SAR testing is not required.
6. For LTE B4 / B5 the maximum bandwidth does not support three non-overlapping channels, per KDB 941225 D05v02r05, when a device supports overlapping channel assignment in a channel bandwidth configuration, the middle channel of the group of overlapping channels should be selected for testing.
7. LTE B4 SAR test was covered by LTE B66; according to April 2015 TCB workshop, SAR test for overlapping LTE bands can be reduced if
 - a. the maximum output power, including tolerance, for the smaller band is \leq the larger band to qualify for the SAR test exclusion
 - b. the channel bandwidth and other operating parameters for the smaller band are fully supported by the larger band



WLAN/ Bluetooth Note:

1. Per KDB 248227 D01v02r02, for 2.4GHz 802.11g/n SAR testing is not required when the highest reported SAR for DSSS is adjusted by the ratio of OFDM to DSSS specified maximum output power and the adjusted SAR is ≤ 1.2 W/kg.
2. When the reported SAR of the test position is > 0.4 W/kg, SAR is repeated for the 802.11 transmission mode configuration tested in the initial test position to measure the subsequent next closet/smallest test separation distance and maximum coupling test position on the highest maximum output power channel, until the report SAR is ≤ 0.8 W/kg or all required test position are tested.
3. For all positions / configurations, when the reported SAR is > 0.8 W/kg, SAR is measured for these test positions / configurations on the subsequent next highest measured output power channel(s) until the reported SAR is ≤ 1.2 W/kg or all required channels are tested.
4. During SAR testing the WLAN transmission was verified using a spectrum analyzer.
5. Based on WLAN 2.4GHz and Bluetooth share the same antenna, so Bluetooth RF exposure evaluation chose the worst position of WLAN 2.4GHz Ant to perform Bluetooth SAR test, and used this Bluetooth SAR value conservatively represent other position do co-located analysis with WWAN.



14.1 Head SAR

<GSM SAR>

Plot No.	Band	Mode	Test Position	Sample	Power Reduction	Ch.	Freq. (MHz)	Average Power (dBm)	Tune-Up Limit (dBm)	Tune-up Scaling Factor	Power Drift (dB)	Measured 1g SAR (W/kg)	Reported 1g SAR (W/kg)
	GSM850	GPRS 4 Tx slot	Right Cheek	1	Full	189	836.4	29.36	30.00	1.159	0.12	0.211	0.245
	GSM850	GPRS 4 Tx slot	Right Tilted	1	Full	189	836.4	29.36	30.00	1.159	0.06	0.146	0.169
01	GSM850	GPRS 4 Tx slot	Left Cheek	1	Full	189	836.4	29.36	30.00	1.159	0.07	0.224	0.260
	GSM850	GPRS 4 Tx slot	Left Tilted	1	Full	189	836.4	29.36	30.00	1.159	0.06	0.137	0.159
	GSM1900	GPRS 4 Tx slot	Right Cheek	1	Full	661	1880	26.43	27.50	1.279	0.04	0.123	0.157
	GSM1900	GPRS 4 Tx slot	Right Tilted	1	Full	661	1880	26.43	27.50	1.279	0.07	0.081	0.104
02	GSM1900	GPRS 4 Tx slot	Left Cheek	1	Full	661	1880	26.43	27.50	1.279	0.03	0.125	0.160
	GSM1900	GPRS 4 Tx slot	Left Tilted	1	Full	661	1880	26.43	27.50	1.279	0.09	0.093	0.119

<WCDMA SAR>

Plot No.	Band	Mode	Test Position	Sample	Power Reduction	Ch.	Freq. (MHz)	Average Power (dBm)	Tune-Up Limit (dBm)	Tune-up Scaling Factor	Power Drift (dB)	Measured 1g SAR (W/kg)	Reported 1g SAR (W/kg)
	WCDMA II	RMC 12.2Kbps	Right Cheek	1	Full	9400	1880	23.85	24.50	1.161	0.11	0.207	0.240
	WCDMA II	RMC 12.2Kbps	Right Tilted	1	Full	9400	1880	23.85	24.50	1.161	0.05	0.128	0.149
03	WCDMA II	RMC 12.2Kbps	Left Cheek	1	Full	9400	1880	23.85	24.50	1.161	-0.06	0.219	0.254
	WCDMA II	RMC 12.2Kbps	Left Tilted	1	Full	9400	1880	23.85	24.50	1.161	-0.03	0.157	0.182
04	WCDMA IV	RMC 12.2Kbps	Right Cheek	1	Full	1413	1732.6	23.42	24.50	1.282	0.11	0.208	0.267
	WCDMA IV	RMC 12.2Kbps	Right Tilted	1	Full	1413	1732.6	23.42	24.50	1.282	-0.06	0.128	0.164
	WCDMA IV	RMC 12.2Kbps	Left Cheek	1	Full	1413	1732.6	23.42	24.50	1.282	0.09	0.187	0.240
	WCDMA IV	RMC 12.2Kbps	Left Tilted	1	Full	1413	1732.6	23.42	24.50	1.282	-0.02	0.135	0.173
	WCDMA V	RMC 12.2Kbps	Right Cheek	1	Full	4182	836.4	23.30	24.50	1.318	0.01	0.158	0.208
	WCDMA V	RMC 12.2Kbps	Right Tilted	1	Full	4182	836.4	23.30	24.50	1.318	-0.06	0.119	0.157
05	WCDMA V	RMC 12.2Kbps	Left Cheek	1	Full	4182	836.4	23.30	24.50	1.318	0.09	0.191	0.252
	WCDMA V	RMC 12.2Kbps	Left Tilted	1	Full	4182	836.4	23.30	24.50	1.318	-0.02	0.116	0.153



<FDD LTE SAR>

Plot No.	Band	BW (MHz)	Modulation	RB Size	RB offset	Test Position	Sample	Power Reduction	Ch.	Freq. (MHz)	Average Power (dBm)	Tune-Up Limit (dBm)	Tune-up Scaling Factor	Power Drift (dB)	Measured 1g SAR (W/kg)	Reported 1g SAR (W/kg)
	LTE Band 2	20M	QPSK	1	0	Right Cheek	1	Full	18900	1880	23.40	24.00	1.148	0.02	0.146	0.168
	LTE Band 2	20M	QPSK	50	0	Right Cheek	1	Full	18900	1880	22.36	23.00	1.159	0.01	0.128	0.148
	LTE Band 2	20M	QPSK	1	0	Right Tilted	1	Full	18900	1880	23.40	24.00	1.148	-0.06	0.092	0.106
	LTE Band 2	20M	QPSK	50	0	Right Tilted	1	Full	18900	1880	22.36	23.00	1.159	0.09	0.080	0.093
06	LTE Band 2	20M	QPSK	1	0	Left Cheek	1	Full	18900	1880	23.40	24.00	1.148	0.04	0.156	0.179
	LTE Band 2	20M	QPSK	50	0	Left Cheek	1	Full	18900	1880	22.36	23.00	1.159	0.03	0.136	0.158
	LTE Band 2	20M	QPSK	1	0	Left Tilted	1	Full	18900	1880	23.40	24.00	1.148	0.02	0.115	0.132
	LTE Band 2	20M	QPSK	50	0	Left Tilted	1	Full	18900	1880	22.36	23.00	1.159	0.03	0.099	0.115
	LTE Band 5	10M	QPSK	1	0	Right Cheek	1	Full	20525	836.5	23.23	24.00	1.194	0.02	0.141	0.168
	LTE Band 5	10M	QPSK	25	0	Right Cheek	1	Full	20525	836.5	22.26	23.00	1.186	0.03	0.120	0.142
	LTE Band 5	10M	QPSK	1	0	Right Tilted	1	Full	20525	836.5	23.23	24.00	1.194	0.05	0.102	0.122
	LTE Band 5	10M	QPSK	25	0	Right Tilted	1	Full	20525	836.5	22.26	23.00	1.186	0.02	0.087	0.103
07	LTE Band 5	10M	QPSK	1	0	Left Cheek	1	Full	20525	836.5	23.23	24.00	1.194	0.1	0.173	0.207
	LTE Band 5	10M	QPSK	25	0	Left Cheek	1	Full	20525	836.5	22.26	23.00	1.186	0.09	0.149	0.177
	LTE Band 5	10M	QPSK	1	0	Left Tilted	1	Full	20525	836.5	23.23	24.00	1.194	0.04	0.106	0.127
	LTE Band 5	10M	QPSK	25	0	Left Tilted	1	Full	20525	836.5	22.26	23.00	1.186	0.03	0.095	0.113
08	LTE Band 7	20M	QPSK	1	0	Right Cheek	1	Full	21100	2535	23.58	24.00	1.102	-0.02	0.155	0.171
	LTE Band 7	20M	QPSK	50	0	Right Cheek	1	Full	21100	2535	22.54	23.00	1.112	0.15	0.130	0.145
	LTE Band 7	20M	QPSK	1	0	Right Tilted	1	Full	21100	2535	23.58	24.00	1.102	0.01	0.057	0.063
	LTE Band 7	20M	QPSK	50	0	Right Tilted	1	Full	21100	2535	22.54	23.00	1.112	0.02	0.047	0.052
	LTE Band 7	20M	QPSK	1	0	Left Cheek	1	Full	21100	2535	23.58	24.00	1.102	0.03	0.117	0.129
	LTE Band 7	20M	QPSK	50	0	Left Cheek	1	Full	21100	2535	22.54	23.00	1.112	0.05	0.096	0.107
	LTE Band 7	20M	QPSK	1	0	Left Tilted	1	Full	21100	2535	23.58	24.00	1.102	0.02	0.086	0.095
	LTE Band 7	20M	QPSK	50	0	Left Tilted	1	Full	21100	2535	22.54	23.00	1.112	-0.02	0.073	0.081
	LTE Band 66	20M	QPSK	1	0	Right Cheek	1	Full	132322	1745	23.14	24.00	1.219	0.03	0.116	0.141
	LTE Band 66	20M	QPSK	50	0	Right Cheek	1	Full	132322	1745	22.21	23.00	1.199	-0.06	0.099	0.119
	LTE Band 66	20M	QPSK	1	0	Right Tilted	1	Full	132322	1745	23.14	24.00	1.219	0.09	0.077	0.094
	LTE Band 66	20M	QPSK	50	0	Right Tilted	1	Full	132322	1745	22.21	23.00	1.199	0.01	0.067	0.080
09	LTE Band 66	20M	QPSK	1	0	Left Cheek	1	Full	132322	1745	23.14	24.00	1.219	-0.16	0.141	0.172
	LTE Band 66	20M	QPSK	50	0	Left Cheek	1	Full	132322	1745	22.21	23.00	1.199	0.09	0.123	0.148
	LTE Band 66	20M	QPSK	1	0	Left Tilted	1	Full	132322	1745	23.14	24.00	1.219	-0.02	0.077	0.094
	LTE Band 66	20M	QPSK	50	0	Left Tilted	1	Full	132322	1745	22.21	23.00	1.199	0.05	0.068	0.082

<WLAN2.4G SAR>

Plot No.	Band	Mode	Test Position	Sample	Power Reduction	Ch.	Freq. (MHz)	Average Power (dBm)	Tune-Up Limit (dBm)	Tune-up Scaling Factor	Duty Cycle %	Duty Cycle Scaling Factor	Power Drift (dB)	Measured 1g SAR (W/kg)	Reported 1g SAR (W/kg)
	WLAN2.4GHz	802.11b 1Mbps	Right Cheek	1	Full	6	2437	17.03	18.00	1.250	100	1.000	0.04	0.413	0.516
	WLAN2.4GHz	802.11b 1Mbps	Right Tilted	1	Full	6	2437	17.03	18.00	1.250	100	1.000	0.01	0.441	0.551
	WLAN2.4GHz	802.11b 1Mbps	Left Cheek	1	Full	6	2437	17.03	18.00	1.250	100	1.000	0.03	0.811	1.014
10	WLAN2.4GHz	802.11b 1Mbps	Left Cheek	1	Full	11	2462	15.66	16.00	1.081	100	1.000	-0.07	1.030	1.114
	WLAN2.4GHz	802.11b 1Mbps	Left Tilted	1	Full	6	2437	17.03	18.00	1.250	100	1.000	-0.02	0.799	0.999
	WLAN2.4GHz	802.11b 1Mbps	Left Tilted	1	Full	11	2437	15.66	16.00	1.081	100	1.000	-0.05	0.990	1.071
	WLAN2.4GHz	802.11b 1Mbps	Left Cheek	2	Full	11	2462	15.66	16.00	1.081	100	1.000	-0.05	1.010	1.092

<Bluetooth SAR>

Plot No.	Band	Mode	Test Position	Sample	Power Reduction	Ch.	Freq. (MHz)	Average Power (dBm)	Tune-Up Limit (dBm)	Tune-up Scaling Factor	Duty Cycle %	Duty Cycle Scaling Factor	Power Drift (dB)	Measured 1g SAR (W/kg)	Reported 1g SAR (W/kg)
11	Bluetooth	1Mbps	Left Cheek	1	Full	39	2441	7.14	8.50	1.368	76.67	1.304	-0.03	0.124	0.221



14.2 Hotspot SAR

<GSM SAR>

Plot No.	Band	Mode	Test Position	Gap (mm)	Sample	Power Reduction	Ch.	Freq. (MHz)	Average Power (dBm)	Tune-Up Limit (dBm)	Tune-up Scaling Factor	Power Drift (dB)	Measured 1g SAR (W/kg)	Reported 1g SAR (W/kg)
	GSM850	GPRS 4 Tx slot	Front	5mm	1	Full	189	836.4	29.36	30.00	1.159	0.15	0.429	0.497
	GSM850	GPRS 4 Tx slot	Back	5mm	1	Full	189	836.4	29.36	30.00	1.159	-0.13	0.860	0.997
	GSM850	GPRS 4 Tx slot	Left Side	5mm	1	Full	189	836.4	29.36	30.00	1.159	0.05	0.318	0.368
	GSM850	GPRS 4 Tx slot	Right Side	5mm	1	Full	189	836.4	29.36	30.00	1.159	0.02	0.240	0.278
	GSM850	GPRS 4 Tx slot	Top Side	5mm	1	Full	189	836.4	29.36	30.00	1.159	0.01	0.010	0.012
	GSM850	GPRS 4 Tx slot	Bottom Side	5mm	1	Full	189	836.4	29.36	30.00	1.159	-0.06	0.298	0.345
	GSM850	GPRS 4 Tx slot	Back	5mm	1	Full	128	824.2	29.35	30.00	1.161	0.09	0.737	0.856
12	GSM850	GPRS 4 Tx slot	Back	5mm	1	Full	251	848.8	29.26	30.00	1.186	0.01	0.973	1.154
	GSM850	GPRS 4 Tx slot	Back	5mm	2	Full	251	848.8	29.26	30.00	1.186	-0.12	0.873	1.035
	GSM1900	GPRS 4 Tx slot	Front	5mm	1	Full	661	1880	26.43	27.50	1.279	0.09	0.423	0.541
	GSM1900	GPRS 4 Tx slot	Back	5mm	1	Full	661	1880	26.43	27.50	1.279	0.07	0.673	0.861
	GSM1900	GPRS 4 Tx slot	Back	5mm	1	Full	512	1850.2	26.29	27.50	1.321	0.07	0.612	0.809
	GSM1900	GPRS 4 Tx slot	Back	5mm	1	Full	810	1909.8	26.42	27.50	1.282	0.07	0.652	0.836
	GSM1900	GPRS 4 Tx slot	Left Side	5mm	1	Hotspot on	661	1880	23.06	23.50	1.107	0.01	0.155	0.172
	GSM1900	GPRS 4 Tx slot	Right Side	5mm	1	Hotspot on	661	1880	23.06	23.50	1.107	0.02	0.101	0.112
	GSM1900	GPRS 4 Tx slot	Top Side	5mm	1	Hotspot on	661	1880	23.06	23.50	1.107	0.07	0.010	0.011
13	GSM1900	GPRS 4 Tx slot	Bottom Side	5mm	1	Hotspot on	661	1880	23.06	23.50	1.107	0.01	1.230	1.361
	GSM1900	GPRS 4 Tx slot	Bottom Side	5mm	1	Hotspot on	512	1850.2	23.03	23.50	1.114	-0.06	1.190	1.326
	GSM1900	GPRS 4 Tx slot	Bottom Side	5mm	1	Hotspot on	810	1909.8	23.02	23.50	1.117	0.09	1.120	1.251
	GSM1900	GPRS 4 Tx slot	Bottom Side	5mm	2	Hotspot on	661	1880	23.06	23.50	1.107	0.09	0.897	0.993



<WCDMA SAR>

Plot No.	Band	Mode	Test Position	Gap (mm)	Sample	Power Reduction	Ch.	Freq. (MHz)	Average Power (dBm)	Tune-Up Limit (dBm)	Tune-up Scaling Factor	Power Drift (dB)	Measured 1g SAR (W/kg)	Reported 1g SAR (W/kg)
	WCDMA II	RMC 12.2Kbps	Front	5mm	1	Full	9400	1880	21.15	22.00	1.216	0.01	0.684	0.832
	WCDMA II	RMC 12.2Kbps	Front	5mm	1	Full	9262	1852.4	21.12	22.00	1.225	0.02	0.630	0.772
	WCDMA II	RMC 12.2Kbps	Front	5mm	1	Full	9538	1907.6	21.10	22.00	1.230	0.07	0.708	0.871
	WCDMA II	RMC 12.2Kbps	Back	5mm	1	Full	9400	1880	21.15	22.00	1.216	0.01	0.791	0.962
14	WCDMA II	RMC 12.2Kbps	Back	5mm	1	Full	9262	1852.4	21.12	22.00	1.225	0.11	0.993	1.216
	WCDMA II	RMC 12.2Kbps	Back	5mm	1	Full	9538	1907.6	21.10	22.00	1.230	0.05	0.749	0.921
	WCDMA II	RMC 12.2Kbps	Left Side	5mm	1	Hotspot on	9400	1880	18.23	19.00	1.194	0.07	0.128	0.153
	WCDMA II	RMC 12.2Kbps	Right Side	5mm	1	Hotspot on	9400	1880	18.23	19.00	1.194	0.09	0.103	0.123
	WCDMA II	RMC 12.2Kbps	Top Side	5mm	1	Hotspot on	9400	1880	18.23	19.00	1.194	0.03	0.010	0.012
	WCDMA II	RMC 12.2Kbps	Bottom Side	5mm	1	Hotspot on	9400	1880	18.23	19.00	1.194	0.01	0.912	1.089
	WCDMA II	RMC 12.2Kbps	Bottom Side	5mm	1	Hotspot on	9262	1852.4	18.17	19.00	1.211	0.08	0.989	1.197
	WCDMA II	RMC 12.2Kbps	Bottom Side	5mm	1	Hotspot on	9538	1907.6	18.22	19.00	1.197	0.02	0.478	0.572
	WCDMA II	RMC 12.2Kbps	Back	5mm	2	Full	9262	1852.4	21.12	22.00	1.225	0.06	0.908	1.112
	WCDMA IV	RMC 12.2Kbps	Front	5mm	1	Full	1413	1732.6	17.78	18.50	1.180	-0.06	0.518	0.611
15	WCDMA IV	RMC 12.2Kbps	Back	5mm	1	Full	1413	1732.6	17.78	18.50	1.180	0.03	1.160	1.369
	WCDMA IV	RMC 12.2Kbps	Back	5mm	1	Full	1312	1712.4	17.67	18.50	1.211	0.05	1.070	1.295
	WCDMA IV	RMC 12.2Kbps	Back	5mm	1	Full	1513	1752.6	17.73	18.50	1.194	0.02	1.109	1.324
	WCDMA IV	RMC 12.2Kbps	Left Side	5mm	1	Hotspot on	1413	1732.6	16.22	17.00	1.197	0.01	0.038	0.045
	WCDMA IV	RMC 12.2Kbps	Right Side	5mm	1	Hotspot on	1413	1732.6	16.22	17.00	1.197	-0.06	0.077	0.092
	WCDMA IV	RMC 12.2Kbps	Top Side	5mm	1	Hotspot on	1413	1732.6	16.22	17.00	1.197	0.12	0.011	0.013
	WCDMA IV	RMC 12.2Kbps	Bottom Side	5mm	1	Hotspot on	1413	1732.6	16.22	17.00	1.197	0.01	1.110	1.328
	WCDMA IV	RMC 12.2Kbps	Bottom Side	5mm	1	Hotspot on	1312	1712.4	16.21	17.00	1.199	0.02	0.970	1.164
	WCDMA IV	RMC 12.2Kbps	Bottom Side	5mm	1	Hotspot on	1513	1752.6	16.17	17.00	1.211	0.03	1.030	1.247
	WCDMA IV	RMC 12.2Kbps	Back	5mm	2	Full	1413	1732.6	17.78	18.50	1.180	0.09	1.070	1.263
	WCDMA V	RMC 12.2Kbps	Front	5mm	1	Full	4182	836.4	23.30	24.50	1.318	0.06	0.348	0.459
16	WCDMA V	RMC 12.2Kbps	Back	5mm	1	Full	4182	836.4	23.30	24.50	1.318	-0.07	0.600	0.791
	WCDMA V	RMC 12.2Kbps	Left Side	5mm	1	Full	4182	836.4	23.30	24.50	1.318	0.04	0.233	0.307
	WCDMA V	RMC 12.2Kbps	Right Side	5mm	1	Full	4182	836.4	23.30	24.50	1.318	0.02	0.171	0.225
	WCDMA V	RMC 12.2Kbps	Top Side	5mm	1	Full	4182	836.4	23.30	24.50	1.318	-0.06	0.010	0.013
	WCDMA V	RMC 12.2Kbps	Bottom Side	5mm	1	Full	4182	836.4	23.30	24.50	1.318	0.04	0.206	0.272



<FDD LTE SAR>

Plot No.	Band	BW (MHz)	Modulation	RB Size	RB offset	Test Position	Gap (mm)	Sample	Power Reduction	Ch.	Freq. (MHz)	Average Power (dBm)	Tune-Up Limit (dBm)	Tune-up Scaling Factor	Power Drift (dB)	Measured 1g SAR (W/kg)	Reported 1g SAR (W/kg)
	LTE Band 2	20M	QPSK	1	0	Front	5mm	1	Full	18900	1880	22.32	23.00	1.169	0.09	0.537	0.628
	LTE Band 2	20M	QPSK	50	0	Front	5mm	1	Full	18900	1880	21.34	22.00	1.164	-0.06	0.460	0.535
	LTE Band 2	20M	QPSK	1	0	Back	5mm	1	Full	18900	1880	22.32	23.00	1.169	0.09	0.718	0.840
	LTE Band 2	20M	QPSK	1	0	Back	5mm	1	Full	18700	1860	22.20	23.00	1.202	-0.01	0.723	0.869
	LTE Band 2	20M	QPSK	1	0	Back	5mm	1	Full	19100	1900	22.24	23.00	1.191	0.05	0.641	0.764
	LTE Band 2	20M	QPSK	50	0	Back	5mm	1	Full	18900	1880	21.34	22.00	1.164	0.03	0.565	0.658
	LTE Band 2	20M	QPSK	100	0	Back	5mm	1	Full	18900	1880	21.18	22.00	1.208	-0.02	0.558	0.674
	LTE Band 2	20M	QPSK	1	0	Left Side	5mm	1	Hotspot on	18900	1880	19.79	20.50	1.178	0.05	0.135	0.159
	LTE Band 2	20M	QPSK	50	0	Left Side	5mm	1	Hotspot on	18900	1880	18.79	19.50	1.178	0.01	0.116	0.137
	LTE Band 2	20M	QPSK	1	0	Right Side	5mm	1	Hotspot on	18900	1880	19.79	20.50	1.178	0.07	0.113	0.133
	LTE Band 2	20M	QPSK	50	0	Right Side	5mm	1	Hotspot on	18900	1880	18.79	19.50	1.178	-0.08	0.095	0.112
	LTE Band 2	20M	QPSK	1	0	Top Side	5mm	1	Hotspot on	18900	1880	19.79	20.50	1.178	0.05	0.013	0.015
	LTE Band 2	20M	QPSK	50	0	Top Side	5mm	1	Hotspot on	18900	1880	18.79	19.50	1.178	0.01	0.017	0.020
17	LTE Band 2	20M	QPSK	1	0	Bottom Side	5mm	1	Hotspot on	18900	1880	19.79	20.50	1.178	0.03	1.030	1.213
	LTE Band 2	20M	QPSK	1	0	Bottom Side	5mm	1	Hotspot on	18700	1860	19.64	20.50	1.219	0.11	0.972	1.185
	LTE Band 2	20M	QPSK	1	0	Bottom Side	5mm	1	Hotspot on	19100	1900	19.53	20.50	1.250	0.05	0.968	1.210
	LTE Band 2	20M	QPSK	50	0	Bottom Side	5mm	1	Hotspot on	18900	1880	18.79	19.50	1.178	-0.16	0.879	1.035
	LTE Band 2	20M	QPSK	50	0	Bottom Side	5mm	1	Hotspot on	18700	1860	18.49	19.50	1.262	0.11	0.817	1.031
	LTE Band 2	20M	QPSK	50	0	Bottom Side	5mm	1	Hotspot on	19100	1900	18.75	19.50	1.189	0.13	0.839	0.997
	LTE Band 2	20M	QPSK	100	0	Bottom Side	5mm	1	Hotspot on	18900	1880	18.71	19.50	1.199	0.05	0.821	0.985
	LTE Band 5	10M	QPSK	1	0	Front	5mm	1	Full	20525	836.5	23.23	24.00	1.194	0.09	0.319	0.381
	LTE Band 5	10M	QPSK	25	0	Front	5mm	1	Full	20525	836.5	22.26	23.00	1.186	0.03	0.296	0.351
18	LTE Band 5	10M	QPSK	1	0	Back	5mm	1	Full	20525	836.5	23.23	24.00	1.194	0.09	0.595	0.710
	LTE Band 5	10M	QPSK	25	0	Back	5mm	1	Full	20525	836.5	22.26	23.00	1.186	-0.06	0.517	0.613
	LTE Band 5	10M	QPSK	1	0	Left Side	5mm	1	Full	20525	836.5	23.23	24.00	1.194	0.03	0.312	0.373
	LTE Band 5	10M	QPSK	25	0	Left Side	5mm	1	Full	20525	836.5	22.26	23.00	1.186	0.09	0.262	0.311
	LTE Band 5	10M	QPSK	1	0	Right Side	5mm	1	Full	20525	836.5	23.23	24.00	1.194	-0.02	0.206	0.246
	LTE Band 5	10M	QPSK	25	0	Right Side	5mm	1	Full	20525	836.5	22.26	23.00	1.186	0.05	0.184	0.218
	LTE Band 5	10M	QPSK	1	0	Top Side	5mm	1	Full	20525	836.5	23.23	24.00	1.194	0.01	0.010	0.012
	LTE Band 5	10M	QPSK	25	0	Top Side	5mm	1	Full	20525	836.5	22.26	23.00	1.186	0.12	0.010	0.012
	LTE Band 5	10M	QPSK	1	0	Bottom Side	5mm	1	Full	20525	836.5	23.23	24.00	1.194	0.06	0.258	0.308
	LTE Band 5	10M	QPSK	25	0	Bottom Side	5mm	1	Full	20525	836.5	22.26	23.00	1.186	0.02	0.253	0.300



Plot No.	Band	BW (MHz)	Modulation	RB Size	RB offset	Test Position	Gap (mm)	Sample	Power Reduction	Ch.	Freq. (MHz)	Average Power (dBm)	Tune-Up Limit (dBm)	Tune-up Scaling Factor	Power Drift (dB)	Measured 1g SAR (W/kg)	Reported 1g SAR (W/kg)
	LTE Band 7	20M	QPSK	1	0	Front	5mm	1	Full	21100	2535	19.50	20.00	1.122	0.02	0.275	0.309
	LTE Band 7	20M	QPSK	50	0	Front	5mm	1	Full	21100	2535	18.40	19.00	1.148	0.03	0.230	0.264
	LTE Band 7	20M	QPSK	1	0	Back	5mm	1	Full	21100	2535	19.50	20.00	1.122	0.09	1.060	1.189
	LTE Band 7	20M	QPSK	1	0	Back	5mm	1	Full	20850	2510	19.32	20.00	1.169	0.05	0.946	1.106
	LTE Band 7	20M	QPSK	1	0	Back	5mm	1	Full	21350	2560	19.41	20.00	1.146	0.14	0.780	0.894
	LTE Band 7	20M	QPSK	50	0	Back	5mm	1	Full	21100	2535	18.40	19.00	1.148	-0.06	0.867	0.995
	LTE Band 7	20M	QPSK	50	0	Back	5mm	1	Full	20850	2510	18.18	19.00	1.208	0.09	0.855	1.033
	LTE Band 7	20M	QPSK	50	0	Back	5mm	1	Full	21350	2560	18.32	19.00	1.169	-0.02	0.714	0.835
	LTE Band 7	20M	QPSK	100	0	Back	5mm	1	Full	21100	2535	18.32	19.00	1.169	0.01	0.789	0.923
	LTE Band 7	20M	QPSK	1	0	Left Side	5mm	1	Hotspot on	21100	2535	19.50	20.00	1.122	-0.06	0.082	0.092
	LTE Band 7	20M	QPSK	50	0	Left Side	5mm	1	Hotspot on	21100	2535	18.40	19.00	1.148	0.04	0.067	0.077
	LTE Band 7	20M	QPSK	1	0	Right Side	5mm	1	Hotspot on	21100	2535	19.50	20.00	1.122	0.02	0.209	0.235
	LTE Band 7	20M	QPSK	50	0	Right Side	5mm	1	Hotspot on	21100	2535	18.40	19.00	1.148	-0.06	0.183	0.210
	LTE Band 7	20M	QPSK	1	0	Top Side	5mm	1	Hotspot on	21100	2535	19.50	20.00	1.122	0.04	0.012	0.013
	LTE Band 7	20M	QPSK	50	0	Top Side	5mm	1	Hotspot on	21100	2535	18.40	19.00	1.148	0.05	0.015	0.017
	LTE Band 7	20M	QPSK	1	0	Bottom Side	5mm	1	Hotspot on	21100	2535	19.50	20.00	1.122	0.08	0.998	1.120
19	LTE Band 7	20M	QPSK	1	0	Bottom Side	5mm	1	Hotspot on	20850	2510	19.32	20.00	1.169	0.01	1.040	1.216
	LTE Band 7	20M	QPSK	1	0	Bottom Side	5mm	1	Hotspot on	21350	2560	19.41	20.00	1.146	0.02	0.803	0.920
	LTE Band 7	20M	QPSK	50	0	Bottom Side	5mm	1	Hotspot on	21100	2535	18.40	19.00	1.148	0.15	0.828	0.951
	LTE Band 7	20M	QPSK	50	0	Bottom Side	5mm	1	Hotspot on	20850	2510	18.18	19.00	1.208	0.16	0.973	1.175
	LTE Band 7	20M	QPSK	50	0	Bottom Side	5mm	1	Hotspot on	21350	2560	18.32	19.00	1.169	0.09	0.699	0.817
	LTE Band 7	20M	QPSK	100	0	Bottom Side	5mm	1	Hotspot on	21100	2535	18.32	19.00	1.169	0.03	0.957	1.119
	LTE Band 7	20M	QPSK	1	0	Bottom Side	5mm	2	Hotspot on	20850	2510	19.32	20.00	1.169	0.01	0.866	1.013
	LTE Band 66	20M	QPSK	1	0	Front	5mm	1	Full	132322	1745	18.83	19.00	1.040	0.01	0.322	0.335
	LTE Band 66	20M	QPSK	50	0	Front	5mm	1	Full	132322	1745	17.80	18.00	1.047	0.01	0.281	0.294
	LTE Band 66	20M	QPSK	1	0	Back	5mm	1	Full	132322	1745	18.83	19.00	1.040	-0.09	1.190	1.238
	LTE Band 66	20M	QPSK	1	0	Back	5mm	1	Full	132072	1720	18.54	19.00	1.112	0.03	1.100	1.223
	LTE Band 66	20M	QPSK	1	0	Back	5mm	1	Full	132572	1770	18.45	19.00	1.135	0.01	1.030	1.169
	LTE Band 66	20M	QPSK	50	0	Back	5mm	1	Full	132322	1745	17.80	18.00	1.047	0.01	0.974	1.020
	LTE Band 66	20M	QPSK	50	0	Back	5mm	1	Full	132072	1720	17.61	18.00	1.094	0.12	0.949	1.038
	LTE Band 66	20M	QPSK	50	0	Back	5mm	1	Full	132572	1770	17.75	18.00	1.059	0.02	1.020	1.080
	LTE Band 66	20M	QPSK	100	0	Back	5mm	1	Full	132322	1745	17.74	18.00	1.062	0.03	0.892	0.947
	LTE Band 66	20M	QPSK	1	0	Left Side	5mm	1	Hotspot on	132322	1745	16.97	17.50	1.130	0.05	0.040	0.045
	LTE Band 66	20M	QPSK	50	0	Left Side	5mm	1	Hotspot on	132322	1745	16.02	16.50	1.117	0.02	0.036	0.040
	LTE Band 66	20M	QPSK	1	0	Right Side	5mm	1	Hotspot on	132322	1745	16.97	17.50	1.130	-0.17	0.097	0.110
	LTE Band 66	20M	QPSK	50	0	Right Side	5mm	1	Hotspot on	132322	1745	16.02	16.50	1.117	0.02	0.080	0.089
	LTE Band 66	20M	QPSK	1	0	Top Side	5mm	1	Hotspot on	132322	1745	16.97	17.50	1.130	0.01	0.010	0.011
	LTE Band 66	20M	QPSK	50	0	Top Side	5mm	1	Hotspot on	132322	1745	16.02	16.50	1.117	-0.06	0.010	0.011
20	LTE Band 66	20M	QPSK	1	0	Bottom Side	5mm	1	Hotspot on	132322	1745	16.97	17.50	1.130	0.02	1.160	1.311
	LTE Band 66	20M	QPSK	1	0	Bottom Side	5mm	1	Hotspot on	132072	1720	16.51	17.50	1.256	0.06	1.000	1.256
	LTE Band 66	20M	QPSK	1	0	Bottom Side	5mm	1	Hotspot on	132572	1770	16.71	17.50	1.199	0.04	1.030	1.235
	LTE Band 66	20M	QPSK	50	0	Bottom Side	5mm	1	Hotspot on	132322	1745	16.02	16.50	1.117	0.06	0.977	1.091
	LTE Band 66	20M	QPSK	50	0	Bottom Side	5mm	1	Hotspot on	132072	1720	15.88	16.50	1.153	0.09	0.939	1.083
	LTE Band 66	20M	QPSK	50	0	Bottom Side	5mm	1	Hotspot on	132572	1770	16.00	16.50	1.122	0.01	0.885	0.993
	LTE Band 66	20M	QPSK	100	0	Bottom Side	5mm	1	Hotspot on	132322	1745	15.90	16.50	1.148	0.01	0.848	0.974



<WLAN2.4G SAR>

Plot No.	Band	Mode	Test Position	Gap (mm)	Sample	Power Reduction	Ch.	Freq. (MHz)	Average Power (dBm)	Tune-Up Limit (dBm)	Tune-up Scaling Factor	Duty Cycle %	Duty Cycle Scaling Factor	Power Drift (dB)	Measured 1g SAR (W/kg)	Reported 1g SAR (W/kg)
	WLAN2.4GHz	802.11b 1Mbps	Front	5mm	1	Full	6	2437	17.03	18.00	1.250	100	1.000	0.09	0.501	0.626
	WLAN2.4GHz	802.11b 1Mbps	Back	5mm	1	Full	6	2437	17.03	18.00	1.250	100	1.000	-0.06	0.756	0.945
	WLAN2.4GHz	802.11b 1Mbps	Back	5mm	1	Full	11	2462	15.66	16.00	1.081	100	1.000	-0.05	0.741	0.801
	WLAN2.4GHz	802.11b 1Mbps	Left Side	5mm	1	Full	6	2437	17.03	18.00	1.250	100	1.000	0.09	0.062	0.078
	WLAN2.4GHz	802.11b 1Mbps	Right Side	5mm	1	Full	6	2437	17.03	18.00	1.250	100	1.000	-0.02	0.610	0.763
	WLAN2.4GHz	802.11b 1Mbps	Bottom Side	5mm	1	Full	6	2437	17.03	18.00	1.250	100	1.000	-	n/a	n/a
21	WLAN2.4GHz	802.11b 1Mbps	Top Side	5mm	1	Full	6	2437	17.03	18.00	1.250	100	1.000	0.06	0.857	1.071
	WLAN2.4GHz	802.11b 1Mbps	Top Side	5mm	1	Full	1	2412	15.29	16.00	1.178	100	1.000	0.06	0.811	0.955
	WLAN2.4GHz	802.11b 1Mbps	Top Side	5mm	1	Full	11	2462	15.66	16.00	1.081	100	1.000	0.06	0.766	0.828
	WLAN2.4GHz	802.11b 1Mbps	Top Side	5mm	2	Full	6	2437	17.03	18.00	1.250	100	1.000	0.15	0.830	1.038

<Bluetooth SAR>

Plot No.	Band	Mode	Test Position	Gap (mm)	Sample	Power Reduction	Ch.	Freq. (MHz)	Average Power (dBm)	Tune-Up Limit (dBm)	Tune-up Scaling Factor	Duty Cycle %	Duty Cycle Scaling Factor	Power Drift (dB)	Measured 1g SAR (W/kg)	Reported 1g SAR (W/kg)
	Bluetooth	1Mbps	Back	5mm	1	Full	39	2441	7.14	8.50	1.368	76.67	1.304	0.01	0.050	0.089
22	Bluetooth	1Mbps	Top Side	5mm	1	Full	39	2441	7.14	8.50	1.368	76.67	1.304	0.06	0.122	0.218



14.3 Body Worn Accessory SAR

<GSM SAR>

Plot No.	Band	Mode	Test Position	Gap (mm)	Sample	Power Reduction	Ch.	Freq. (MHz)	Average Power (dBm)	Tune-Up Limit (dBm)	Tune-up Scaling Factor	Power Drift (dB)	Measured 1g SAR (W/kg)	Reported 1g SAR (W/kg)
	GSM850	GPRS 4 Tx slot	Front	5mm	1	Full	189	836.4	29.36	30.00	1.159	0.15	0.429	0.497
	GSM850	GPRS 4 Tx slot	Back	5mm	1	Full	189	836.4	29.36	30.00	1.159	-0.13	0.860	0.997
	GSM850	GPRS 4 Tx slot	Back	5mm	1	Full	128	824.2	29.35	30.00	1.161	0.09	0.737	0.856
23	GSM850	GPRS 4 Tx slot	Back	5mm	1	Full	251	848.8	29.26	30.00	1.186	0.01	0.973	1.154
	GSM850	GPRS 4 Tx slot	Back	5mm	2	Full	251	848.8	29.26	30.00	1.186	-0.12	0.873	1.035
	GSM1900	GPRS 4 Tx slot	Front	5mm	1	Full	661	1880	26.43	27.50	1.279	0.09	0.423	0.541
24	GSM1900	GPRS 4 Tx slot	Back	5mm	1	Full	661	1880	26.43	27.50	1.279	0.07	0.673	0.861
	GSM1900	GPRS 4 Tx slot	Back	5mm	1	Full	512	1850.2	26.29	27.50	1.321	0.07	0.612	0.809
	GSM1900	GPRS 4 Tx slot	Back	5mm	1	Full	810	1909.8	26.42	27.50	1.282	0.07	0.652	0.836

<WCDMA SAR>

Plot No.	Band	Mode	Test Position	Gap (mm)	Sample	Headset	Power Reduction	Ch.	Freq. (MHz)	Average Power (dBm)	Tune-Up Limit (dBm)	Tune-up Scaling Factor	Power Drift (dB)	Measured 1g SAR (W/kg)	Reported 1g SAR (W/kg)
	WCDMA II	RMC 12.2Kbps	Front	5mm	1	-	Full	9400	1880	21.15	22.00	1.216	0.01	0.684	0.832
	WCDMA II	RMC 12.2Kbps	Front	5mm	1	-	Full	9262	1852.4	21.12	22.00	1.225	0.02	0.630	0.772
	WCDMA II	RMC 12.2Kbps	Front	5mm	1	-	Full	9538	1907.6	21.10	22.00	1.230	0.07	0.708	0.871
	WCDMA II	RMC 12.2Kbps	Back	5mm	1	-	Full	9400	1880	21.15	22.00	1.216	0.01	0.791	0.962
25	WCDMA II	RMC 12.2Kbps	Back	5mm	1	-	Full	9262	1852.4	21.12	22.00	1.225	0.11	0.993	1.216
	WCDMA II	RMC 12.2Kbps	Back	5mm	1	-	Full	9538	1907.6	21.10	22.00	1.230	0.05	0.749	0.921
	WCDMA II	RMC 12.2Kbps	Back	5mm	1	Headset	Full	9262	1852.4	21.12	22.00	1.225	0.05	0.862	1.056
	WCDMA II	RMC 12.2Kbps	Back	5mm	2	-	Full	9262	1852.4	21.12	22.00	1.225	0.06	0.908	1.112
	WCDMA IV	RMC 12.2Kbps	Front	5mm	1	-	Full	1413	1732.6	17.78	18.50	1.180	-0.06	0.518	0.611
26	WCDMA IV	RMC 12.2Kbps	Back	5mm	1	-	Full	1413	1732.6	17.78	18.50	1.180	0.03	1.160	1.369
	WCDMA IV	RMC 12.2Kbps	Back	5mm	1	-	Full	1312	1712.4	17.67	18.50	1.211	0.05	1.070	1.295
	WCDMA IV	RMC 12.2Kbps	Back	5mm	1	-	Full	1513	1752.6	17.73	18.50	1.194	0.02	1.109	1.324
	WCDMA IV	RMC 12.2Kbps	Back	5mm	1	Headset	Full	1413	1732.6	17.78	18.50	1.180	0.06	1.080	1.275
	WCDMA IV	RMC 12.2Kbps	Back	5mm	2	-	Full	1413	1732.6	17.78	18.50	1.180	0.09	1.070	1.263
	WCDMA V	RMC 12.2Kbps	Front	5mm	1	1	Full	4182	836.4	23.30	24.50	1.318	0.06	0.348	0.459
27	WCDMA V	RMC 12.2Kbps	Back	5mm	1	1	Full	4182	836.4	23.30	24.50	1.318	-0.07	0.600	0.791



<FDD LTE SAR>

Plot No.	Band	BW (MHz)	Modulation	RB Size	RB offset	Test Position	Gap (mm)	Sample	Headset	Power Reduction	Ch.	Freq. (MHz)	Average Power (dBm)	Tune-Up Limit (dBm)	Tune-up Scaling Factor	Power Drift (dB)	Measured 1g SAR (W/kg)	Reported 1g SAR (W/kg)
	LTE Band 2	20M	QPSK	1	0	Front	5mm	1	-	Full	18900	1880	22.32	23.00	1.169	0.09	0.537	0.628
	LTE Band 2	20M	QPSK	50	0	Front	5mm	1	-	Full	18900	1880	21.34	22.00	1.164	-0.06	0.460	0.535
	LTE Band 2	20M	QPSK	1	0	Back	5mm	1	-	Full	18900	1880	22.32	23.00	1.169	0.09	0.718	0.840
28	LTE Band 2	20M	QPSK	1	0	Back	5mm	1	-	Full	18700	1860	22.20	23.00	1.202	-0.01	0.723	0.869
	LTE Band 2	20M	QPSK	1	0	Back	5mm	1	-	Full	19100	1900	22.24	23.00	1.191	0.05	0.641	0.764
	LTE Band 2	20M	QPSK	50	0	Back	5mm	1	-	Full	18900	1880	21.34	22.00	1.164	0.03	0.565	0.658
	LTE Band 2	20M	QPSK	100	0	Back	5mm	1	-	Full	18900	1880	21.18	22.00	1.208	-0.02	0.558	0.674
	LTE Band 5	10M	QPSK	1	0	Front	5mm	1	-	Full	20525	836.5	23.23	24.00	1.194	0.09	0.319	0.381
	LTE Band 5	10M	QPSK	25	0	Front	5mm	1	-	Full	20525	836.5	22.26	23.00	1.186	0.03	0.296	0.351
29	LTE Band 5	10M	QPSK	1	0	Back	5mm	1	-	Full	20525	836.5	23.23	24.00	1.194	0.09	0.595	0.710
	LTE Band 5	10M	QPSK	25	0	Back	5mm	1	-	Full	20525	836.5	22.26	23.00	1.186	-0.06	0.517	0.613
	LTE Band 7	20M	QPSK	1	0	Front	5mm	1	-	Full	21100	2535	19.50	20.00	1.122	0.02	0.275	0.309
	LTE Band 7	20M	QPSK	50	0	Front	5mm	1	-	Full	21100	2535	18.40	19.00	1.148	0.03	0.230	0.264
30	LTE Band 7	20M	QPSK	1	0	Back	5mm	1	-	Full	21100	2535	19.50	20.00	1.122	0.09	1.060	1.189
	LTE Band 7	20M	QPSK	1	0	Back	5mm	1	-	Full	20850	2510	19.32	20.00	1.169	0.05	0.946	1.106
	LTE Band 7	20M	QPSK	1	0	Back	5mm	1	-	Full	21350	2560	19.41	20.00	1.146	0.14	0.780	0.894
	LTE Band 7	20M	QPSK	50	0	Back	5mm	1	-	Full	21100	2535	18.40	19.00	1.148	-0.06	0.867	0.995
	LTE Band 7	20M	QPSK	50	0	Back	5mm	1	-	Full	20850	2510	18.18	19.00	1.208	0.09	0.855	1.033
	LTE Band 7	20M	QPSK	50	0	Back	5mm	1	-	Full	21350	2560	18.32	19.00	1.169	-0.02	0.714	0.835
	LTE Band 7	20M	QPSK	100	0	Back	5mm	1	-	Full	21100	2535	18.32	19.00	1.169	0.01	0.789	0.923
	LTE Band 7	20M	QPSK	1	0	Back	5mm	2	-	Full	21100	2535	19.50	20.00	1.122	0.02	0.999	1.121
	LTE Band 66	20M	QPSK	1	0	Front	5mm	1	-	Full	132322	1745	18.83	19.00	1.040	0.01	0.322	0.335
	LTE Band 66	20M	QPSK	50	0	Front	5mm	1	-	Full	132322	1745	17.80	18.00	1.047	0.01	0.281	0.294
31	LTE Band 66	20M	QPSK	1	0	Back	5mm	1	-	Full	132322	1745	18.83	19.00	1.040	-0.09	1.190	1.238
	LTE Band 66	20M	QPSK	1	0	Back	5mm	1	-	Full	132072	1720	18.54	19.00	1.112	0.03	1.100	1.223
	LTE Band 66	20M	QPSK	1	0	Back	5mm	1	-	Full	132572	1770	18.45	19.00	1.135	0.01	1.030	1.169
	LTE Band 66	20M	QPSK	50	0	Back	5mm	1	-	Full	132322	1745	17.80	18.00	1.047	0.01	0.974	1.020
	LTE Band 66	20M	QPSK	50	0	Back	5mm	1	-	Full	132072	1720	17.61	18.00	1.094	0.12	0.949	1.038
	LTE Band 66	20M	QPSK	50	0	Back	5mm	1	-	Full	132572	1770	17.75	18.00	1.059	0.02	1.020	1.080
	LTE Band 66	20M	QPSK	100	0	Back	5mm	1	-	Full	132322	1745	17.74	18.00	1.062	0.03	0.892	0.947
	LTE Band 66	20M	QPSK	1	0	Back	5mm	1	Headset	Full	132322	1745	18.83	19.00	1.040	-0.02	1.120	1.165

<WLAN2.4G SAR>

Plot No.	Band	Mode	Test Position	Gap (mm)	Sample	Power Reduction	Ch.	Freq. (MHz)	Average Power (dBm)	Tune-Up Limit (dBm)	Tune-up Scaling Factor	Duty Cycle %	Duty Cycle Scaling Factor	Power Drift (dB)	Measured 1g SAR (W/kg)	Reported 1g SAR (W/kg)
	WLAN2.4GHz	802.11b 1Mbps	Front	5mm	1	Full	6	2437	17.03	18.00	1.250	100	1.000	0.09	0.501	0.626
32	WLAN2.4GHz	802.11b 1Mbps	Back	5mm	1	Full	6	2437	17.03	18.00	1.250	100	1.000	-0.06	0.756	0.945
	WLAN2.4GHz	802.11b 1Mbps	Back	5mm	1	Full	11	2462	15.66	16.00	1.081	100	1.000	-0.05	0.741	0.801
	WLAN2.4GHz	802.11b 1Mbps	Back	5mm	2	Full	6	2437	17.03	18.00	1.250	100	1.000	-0.02	0.661	0.826

<Bluetooth SAR>

Plot No.	Band	Mode	Test Position	Gap (mm)	Sample	Power Reduction	Ch.	Freq. (MHz)	Average Power (dBm)	Tune-Up Limit (dBm)	Tune-up Scaling Factor	Duty Cycle %	Duty Cycle Scaling Factor	Power Drift (dB)	Measured 1g SAR (W/kg)	Reported 1g SAR (W/kg)
33	Bluetooth	1Mbps	Back	5mm	1	Full	39	2441	7.14	8.50	1.368	76.67	1.304	0.01	0.050	0.089



14.4 Product specific 10g SAR

<GSM SAR>

Plot No.	Band	Mode	Test Position	Gap (mm)	Sample	Power Reduction	Ch.	Freq. (MHz)	Average Power (dBm)	Tune-Up Limit (dBm)	Tune-up Scaling Factor	Power Drift (dB)	Measured 10g SAR (W/kg)	Reported 10g SAR (W/kg)
34	GSM1900	GPRS 4 Tx slot	Bottom Side	0mm	1	Full	661	1880	26.43	27.50	1.279	0.06	1.970	2.520
	GSM1900	GPRS 4 Tx slot	Bottom Side	0mm	1	Full	512	1850.2	26.29	27.50	1.321	0.02	1.900	2.510
	GSM1900	GPRS 4 Tx slot	Bottom Side	0mm	1	Full	810	1909.8	26.42	27.50	1.282	0.01	1.770	2.270

<WCDMA SAR>

Plot No.	Band	Mode	Test Position	Gap (mm)	Sample	Power Reduction	Ch.	Freq. (MHz)	Average Power (dBm)	Tune-Up Limit (dBm)	Tune-up Scaling Factor	Power Drift (dB)	Measured 10g SAR (W/kg)	Reported 10g SAR (W/kg)
35	WCDMA II	RMC 12.2Kbps	Back	0mm	1	Full	9400	1880	21.15	22.00	1.216	-0.01	1.870	2.274
	WCDMA II	RMC 12.2Kbps	Back	0mm	1	Full	9262	1852.4	21.12	22.00	1.225	0.05	1.580	1.935
	WCDMA II	RMC 12.2Kbps	Back	0mm	1	Full	9538	1907.6	21.10	22.00	1.230	0.02	1.380	1.698
	WCDMA II	RMC 12.2Kbps	Bottom Side	0mm	1	Full	9400	1880	21.15	22.00	1.216	-0.01	1.620	1.970
	WCDMA IV	RMC 12.2Kbps	Back	0mm	1	Full	1413	1732.6	17.78	18.50	1.180	0.11	0.493	0.582
36	WCDMA IV	RMC 12.2Kbps	Bottom Side	0mm	1	Full	1413	1732.6	17.78	18.50	1.180	0.01	0.944	1.114

<FDD LTE SAR>

Plot No.	Band	BW (MHz)	Modulation	RB Size	RB offset	Test Position	Gap (mm)	Sample	Power Reduction	Ch.	Freq. (MHz)	Average Power (dBm)	Tune-Up Limit (dBm)	Tune-up Scaling Factor	Power Drift (dB)	Measured 10g SAR (W/kg)	Reported 10g SAR (W/kg)
	LTE Band 2	20M	QPSK	1	0	Bottom Side	0mm	1	Full	18900	1880	22.32	23.00	1.169	0.03	2.330	2.725
	LTE Band 2	20M	QPSK	1	0	Bottom Side	0mm	1	Full	18700	1860	22.20	23.00	1.202	0.05	2.200	2.645
37	LTE Band 2	20M	QPSK	1	0	Bottom Side	0mm	1	Full	19100	1900	22.24	23.00	1.191	0.02	2.380	2.835
	LTE Band 2	20M	QPSK	50	0	Bottom Side	0mm	1	Full	18900	1880	21.34	22.00	1.164	-0.02	2.020	2.352
	LTE Band 2	20M	QPSK	50	0	Bottom Side	0mm	1	Full	18700	1860	21.19	22.00	1.205	0.05	1.990	2.398
	LTE Band 2	20M	QPSK	50	0	Bottom Side	0mm	1	Full	19100	1900	21.21	22.00	1.199	0.01	2.020	2.423
	LTE Band 2	20M	QPSK	100	0	Bottom Side	0mm	1	Full	18900	1880	21.18	22.00	1.208	0.07	2.000	2.416
	LTE Band 2	20M	QPSK	1	0	Bottom Side	0mm	2	Full	19100	1900	22.24	23.00	1.191	0.03	2.220	2.645
38	LTE Band 7	20M	QPSK	1	0	Back	0mm	1	Full	21100	2535	19.50	20.00	1.122	0.04	1.060	1.189
	LTE Band 7	20M	QPSK	50	0	Back	0mm	1	Full	21100	2535	18.40	19.00	1.148	0.02	0.898	1.031
	LTE Band 7	20M	QPSK	1	0	Bottom Side	0mm	1	Full	21100	2535	19.50	20.00	1.122	0.08	0.809	0.908
	LTE Band 7	20M	QPSK	50	0	Bottom Side	0mm	1	Full	21100	2535	18.40	19.00	1.148	0.12	0.644	0.739
	LTE Band 7	20M	QPSK	1	0	Back	0mm	2	Full	21100	2535	19.50	20.00	1.122	0.05	1.010	1.133
	LTE Band 66	20M	QPSK	1	0	Back	0mm	1	Full	132322	1745	18.83	19.00	1.040	0.01	0.569	0.592
	LTE Band 66	20M	QPSK	50	0	Back	0mm	1	Full	132322	1745	17.80	18.00	1.047	-0.02	0.465	0.487
39	LTE Band 66	20M	QPSK	1	0	Bottom Side	0mm	1	Full	132322	1745	18.83	19.00	1.040	0.08	1.190	1.238
	LTE Band 66	20M	QPSK	50	0	Bottom Side	0mm	1	Full	132322	1745	17.80	18.00	1.047	-0.06	0.971	1.017
	LTE Band 66	20M	QPSK	1	0	Bottom Side	0mm	2	Full	132322	1745	18.83	19.00	1.040	0.19	1.110	1.154



14.5 Repeated SAR Measurement

<1g>

No.	Band	BW (MHz)	Modulation	RB Size	RB offset	Mode	Test Position	Sample	Gap (mm)	Power Reduction	Ch.	Freq. (MHz)	Average Power (dBm)	Tune-Up Limit (dBm)	Tune-up Scaling Factor	Duty Cycle %	Duty Cycle Scaling Factor	Power Drift (dB)	Measured 1g SAR (W/kg)	Ratio	Reported 1g SAR (W/kg)
1st	WLAN2.4GHz	-	-	-	-	802.11b 1Mbps	Left Cheek	1	0mm	Full	11	2462	15.66	16.00	1.081	100	1.000	-0.07	1.030	1	1.114
2nd	WLAN2.4GHz	-	-	-	-	802.11b 1Mbps	Left Cheek	1	0mm	Full	11	2462	15.66	16.00	1.081	100	1.000	-0.04	0.998	1.032	1.079
1st	GSM850	-	-	-	-	GPRS 4 Tx slot	Back	1	5mm	Full	251	848.8	29.26	30.00	1.186		1.000	0.01	0.973	1	1.154
2nd	GSM850	-	-	-	-	GPRS 4 Tx slot	Back	1	5mm	Full	251	848.8	29.26	30.00	1.186		1.000	0.03	0.964	1.009	1.143
1st	GSM1900	-	-	-	-	GPRS 4 Tx slot	Bottom Side	1	5mm	Hotspot on	661	1880	23.06	23.50	1.107		1.000	0.01	1.230	1	1.361
2nd	GSM1900	-	-	-	-	GPRS 4 Tx slot	Bottom Side	1	5mm	Hotspot on	661	1880	23.06	23.50	1.107		1.000	-0.03	1.160	1.060	1.284
1st	LTE Band 7	20M	QPSK	1	0	-	Back	1	5mm	Full	21100	2535	19.50	20.00	1.122		1.000	0.09	1.060	1	1.189
2nd	LTE Band 7	20M	QPSK	1	0	-	Back	1	5mm	Full	21100	2535	19.50	20.00	1.122		1.000	-0.02	1.010	1.050	1.133
1st	LTE Band 66	20M	QPSK	1	0	-	Back	1	5mm	Full	132322	1745	18.83	19.00	1.040		1.000	-0.09	1.190	1	1.238
2nd	LTE Band 66	20M	QPSK	1	0	-	Back	1	5mm	Full	132322	1745	18.83	19.00	1.040		1.000	-0.05	1.020	1.167	1.061

<10g>

No.	Band	BW (MHz)	Modulation	RB Size	RB offset	Mode	Test Position	Sample	Gap (mm)	Power Reduction	Ch.	Freq. (MHz)	Average Power (dBm)	Tune-Up Limit (dBm)	Tune-up Scaling Factor	Duty Cycle %	Duty Cycle Scaling Factor	Power Drift (dB)	Measured 10g SAR (W/kg)	Ratio	Reported 10g SAR (W/kg)
1st	LTE Band 2	20M	QPSK	1	0	-	Bottom Side	1	0mm	Full	19100	1900	22.24	23.00	1.191		1.000	0.02	2.380	1	2.835
2nd	LTE Band 2	20M	QPSK	1	0	-	Bottom Side	1	0mm	Full	19100	1900	22.24	23.00	1.191		1.000	-0.03	2.250	1.058	2.680

General Note:

1. Per KDB 865664 D01v01r04, for each frequency band, repeated SAR measurement is required only when the measured SAR is $\geq 0.8W/kg$.
2. Per KDB 865664 D01v01r04, if the ratio among the repeated measurement is ≤ 1.2 and the measured SAR $< 1.45W/kg$, only one repeated measurement is required.
3. Per KDB 865664 D01v01r04, if the extremity repeated SAR is necessary, the same procedures should be adapted for measurements according to extremity and occupational exposure limits by applying a factor of 2.5 for extremity exposure and a factor of 5 for occupational exposure to the corresponding SAR thresholds.
4. The ratio is the difference in percentage between original and repeated *measured SAR*.
5. All measurement SAR result is scaled-up to account for tune-up tolerance and is compliant.

15. Simultaneous Transmission Analysis

No.	Simultaneous Transmission Configurations	Portable Handset			
		Head	Body-worn	Hotspot	Product specific 10g SAR
1.	GSM Voice + WLAN2.4GHz	Yes	Yes		Yes
2.	GPRS/EDGE + WLAN2.4GHz	Yes	Yes	Yes	Yes
3.	WCDMA + WLAN2.4GHz	Yes	Yes	Yes	Yes
4.	LTE + WLAN2.4GHz	Yes	Yes	Yes	Yes
5.	GSM Voice + Bluetooth	Yes	Yes		Yes
6.	GPRS/EDGE + Bluetooth	Yes	Yes	Yes	Yes
7.	WCDMA + Bluetooth	Yes	Yes	Yes	Yes
8.	LTE + Bluetooth	Yes	Yes	Yes	Yes

General Note:

1. This device supports VoIP in GPRS, EGPRS, WCDMA, and LTE (e.g. for 3rd-party VoIP), LTE supports VoLTE operation.
2. EUT will choose each GSM, WCDMA and LTE according to the network signal condition; therefore, they will not operate simultaneously at any moment.
3. This device 2.4GHz WLAN support hotspot operation and Bluetooth support tethering applications.
4. WLAN 2.4GHz and Bluetooth share the same antenna so can't transmit simultaneously.
5. Chose the worst zoom scan SAR of WLAN correspondingly for co-located with WWAN analysis.
6. The reported SAR summation is calculated based on the same configuration and test position.
7. Per KDB 447498 D01v06, simultaneous transmission SAR is compliant if,
 - i) 1g Scalar SAR summation < 1.6W/kg and 10g Scalar SAR summation < 4.0W/kg.
 - ii) $SPLSR = (SAR1 + SAR2)^{1.5} / (\text{min. separation distance, mm})$, and the peak separation distance is determined from the square root of $[(x1-x2)^2 + (y1-y2)^2 + (z1-z2)^2]$, where $(x1, y1, z1)$ and $(x2, y2, z2)$ are the coordinates of the extrapolated peak SAR locations in the zoom scan.
 - iii) If $SPLSR \leq 0.04$ for 1g SAR and $SPLSR \leq 0.10$ for 10g SAR, simultaneously transmission SAR measurement is not necessary.
 - iv) Simultaneously transmission SAR measurement, and the reported multi-band 1g SAR < 1.6W/kg and 10g SAR < 4.0W/kg.
 - v) The SPLSR calculated results please refer to section 15.4.



15.1 Head Exposure Conditions

WWAN Band		Exposure Position	1	2	3	1+2 Summed 1g SAR (W/kg)	1+3 Summed 1g SAR (W/kg)
			WWAN	2.4GHz WLAN	Bluetooth		
			1g SAR (W/kg)	1g SAR (W/kg)	1g SAR (W/kg)		
GSM	GSM850	Right Cheek	0.245	0.516	0.221	0.76	0.47
		Right Tilted	0.169	0.551	0.221	0.72	0.39
		Left Cheek	0.260	1.114	0.221	1.37	0.48
		Left Tilted	0.159	1.071	0.221	1.23	0.38
	GSM1900	Right Cheek	0.157	0.516	0.221	0.67	0.38
		Right Tilted	0.104	0.551	0.221	0.66	0.33
		Left Cheek	0.160	1.114	0.221	1.27	0.38
		Left Tilted	0.119	1.071	0.221	1.19	0.34
WCDMA	WCDMA II	Right Cheek	0.240	0.516	0.221	0.76	0.46
		Right Tilted	0.149	0.551	0.221	0.70	0.37
		Left Cheek	0.254	1.114	0.221	1.37	0.48
		Left Tilted	0.182	1.071	0.221	1.25	0.40
	WCDMA IV	Right Cheek	0.267	0.516	0.221	0.78	0.49
		Right Tilted	0.164	0.551	0.221	0.72	0.39
		Left Cheek	0.240	1.114	0.221	1.35	0.46
		Left Tilted	0.173	1.071	0.221	1.24	0.39
	WCDMA V	Right Cheek	0.208	0.516	0.221	0.72	0.43
		Right Tilted	0.157	0.551	0.221	0.71	0.38
		Left Cheek	0.252	1.114	0.221	1.37	0.47
		Left Tilted	0.153	1.071	0.221	1.22	0.37
LTE	LTE Band 2	Right Cheek	0.168	0.516	0.221	0.68	0.39
		Right Tilted	0.106	0.551	0.221	0.66	0.33
		Left Cheek	0.179	1.114	0.221	1.29	0.40
		Left Tilted	0.132	1.071	0.221	1.20	0.35
	LTE Band 5	Right Cheek	0.168	0.516	0.221	0.68	0.39
		Right Tilted	0.122	0.551	0.221	0.67	0.34
		Left Cheek	0.207	1.114	0.221	1.32	0.43
		Left Tilted	0.127	1.071	0.221	1.20	0.35
	LTE Band 7	Right Cheek	0.171	0.516	0.221	0.69	0.39
		Right Tilted	0.063	0.551	0.221	0.61	0.28
		Left Cheek	0.129	1.114	0.221	1.24	0.35
		Left Tilted	0.095	1.071	0.221	1.17	0.32
	LTE Band 66	Right Cheek	0.141	0.516	0.221	0.66	0.36
		Right Tilted	0.094	0.551	0.221	0.65	0.32
		Left Cheek	0.172	1.114	0.221	1.29	0.39
		Left Tilted	0.094	1.071	0.221	1.17	0.32



15.2 Hotspot Exposure Conditions

WWAN Band		Exposure Position	1	2	3	1+2	Case No	SPLSR	1+3
			WWAN	2.4GHz WLAN	Bluetooth	Summed			Summed
			1g SAR (W/kg)	1g SAR (W/kg)	1g SAR (W/kg)	1g SAR (W/kg)			1g SAR (W/kg)
GSM	GSM850	Front	0.497	0.626	0.218	1.12			0.72
		Back	1.154	0.945	0.089	2.10	#01	0.02	1.24
		Left side	0.368	0.078	0.218	0.45			0.59
		Right side	0.278	0.763	0.218	1.04			0.50
		Top side	0.012	1.071	0.218	1.08			0.23
	Bottom side	0.345		0.218	0.35			0.56	
	GSM1900	Front	0.541	0.626	0.218	1.17			0.76
		Back	0.861	0.945	0.089	1.81	#05	0.02	0.95
		Left side	0.172	0.078	0.218	0.25			0.39
		Right side	0.112	0.763	0.218	0.88			0.33
Top side		0.011	1.071	0.218	1.08			0.23	
Bottom side	1.361		0.218	1.36			1.58		
WCDMA	WCDMA II	Front	0.871	0.626	0.218	1.50			1.09
		Back	1.216	0.945	0.089	2.16	#02	0.02	1.31
		Left side	0.153	0.078	0.218	0.23			0.37
		Right side	0.123	0.763	0.218	0.89			0.34
		Top side	0.012	1.071	0.218	1.08			0.23
		Bottom side	1.197		0.218	1.20			1.42
	WCDMA IV	Front	0.611	0.626	0.218	1.24			0.83
		Back	1.369	0.945	0.089	2.31	#03	0.02	1.46
		Left side	0.045	0.078	0.218	0.12			0.26
		Right side	0.092	0.763	0.218	0.86			0.31
		Top side	0.013	1.071	0.218	1.08			0.23
		Bottom side	1.328		0.218	1.33			1.55
	WCDMA V	Front	0.459	0.626	0.218	1.09			0.68
		Back	0.791	0.945	0.089	1.74	#06	0.02	0.88
		Left side	0.307	0.078	0.218	0.39			0.53
		Right side	0.225	0.763	0.218	0.99			0.44
		Top side	0.013	1.071	0.218	1.08			0.23
		Bottom side	0.272		0.218	0.27			0.49
LTE	LTE Band 2	Front	0.628	0.626	0.218	1.25			0.85
		Back	0.869	0.945	0.089	1.81	#07	0.02	0.96
		Left side	0.159	0.078	0.218	0.24			0.38
		Right side	0.133	0.763	0.218	0.90			0.35
		Top side	0.020	1.071	0.218	1.09			0.24
		Bottom side	1.213		0.218	1.21			1.43
	LTE Band 5	Front	0.381	0.626	0.218	1.01			0.60
		Back	0.710	0.945	0.089	1.66	#08	0.01	0.80
		Left side	0.373	0.078	0.218	0.45			0.59
		Right side	0.246	0.763	0.218	1.01			0.46
		Top side	0.012	1.071	0.218	1.08			0.23
		Bottom side	0.308		0.218	0.31			0.53
	LTE Band 7	Front	0.309	0.626	0.218	0.94			0.53
		Back	1.189	0.945	0.089	2.13	#04	0.02	1.28
		Left side	0.092	0.078	0.218	0.17			0.31
		Right side	0.235	0.763	0.218	1.00			0.45
		Top side	0.017	1.071	0.218	1.09			0.24
		Bottom side	1.216		0.218	1.22			1.43
	LTE Band 66	Front	0.335	0.626	0.218	0.96			0.55
		Back	1.238	0.945	0.089	2.18	#09	0.02	1.33
		Left side	0.045	0.078	0.218	0.12			0.26
		Right side	0.110	0.763	0.218	0.87			0.33
		Top side	0.011	1.071	0.218	1.08			0.23
		Bottom side	1.311		0.218	1.31			1.53



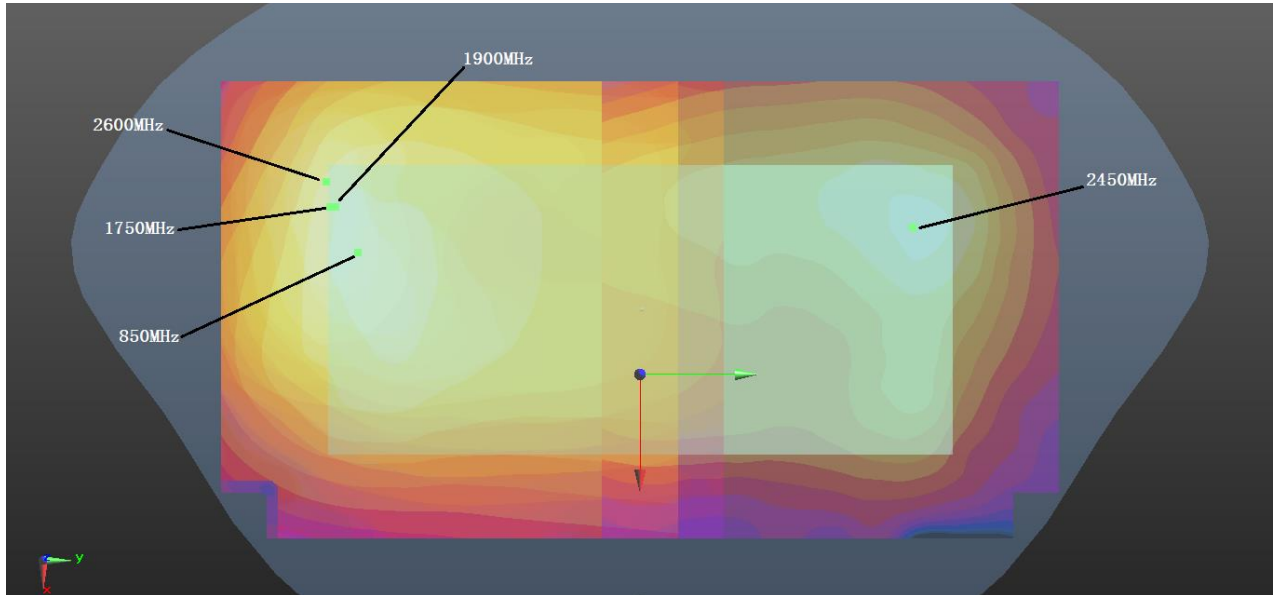
15.3 Body-Worn Accessory Exposure Conditions

WWAN Band		Exposure Position	1	2	3	1+2	Case No	SPLSR	1+3
			WWAN 1g SAR (W/kg)	2.4GHz WLAN 1g SAR (W/kg)	Bluetooth 1g SAR (W/kg)	Summed 1g SAR (W/kg)			Summed 1g SAR (W/kg)
GSM	GSM850	Front	0.497	0.626	0.089	1.12			0.59
		Back	1.154	0.945	0.089	2.10	#01	0.02	1.24
		Back with Headset				0.00			0.00
	GSM1900	Front	0.541	0.626	0.089	1.17			0.63
		Back	0.861	0.945	0.089	1.81	#05	0.02	0.95
		Back with Headset				0.00			0.00
WCDMA	WCDMA II	Front	0.871	0.626	0.089	1.50			0.96
		Back	1.216	0.945	0.089	2.16	#02	0.02	1.31
		Back with Headset	1.056			1.06			1.06
	WCDMA IV	Front	0.611	0.626	0.089	1.24			0.70
		Back	1.369	0.945	0.089	2.31	#03	0.02	1.46
		Back with Headset	1.275			1.28			1.28
	WCDMA V	Front	0.459	0.626	0.089	1.09			0.55
		Back	0.791	0.945	0.089	1.74	#06	0.02	0.88
		Back with Headset				0.00			0.00
LTE	LTE Band 2	Front	0.628	0.626	0.089	1.25			0.72
		Back	0.869	0.945	0.089	1.81	#07	0.02	0.96
		Back with Headset				0.00			0.00
	LTE Band 5	Front	0.381	0.626	0.089	1.01			0.47
		Back	0.710	0.945	0.089	1.66	#08	0.01	0.80
		Back with Headset				0.00			0.00
	LTE Band 7	Front	0.309	0.626	0.089	0.94			0.40
		Back	1.189	0.945	0.089	2.13	#04	0.02	1.28
		Back with Headset				0.00			0.00
	LTE Band 66	Front	0.335	0.626	0.089	0.96			0.42
		Back	1.238	0.945	0.089	2.18	#09	0.02	1.33
		Back with Headset	1.165			1.17			1.17

15.4 SPLSR Evaluation and Analysis

General Note:

1. When standalone SAR is measured for both antennas in the pair, the peak location separation distance is computed by the square root of $[(x1-x2)^2 + (y1-y2)^2 + (z1-z2)^2]$, where $(x1, y1, z1)$ and $(x2, y2, z2)$ are the coordinates in the area scans or extrapolated peak SAR locations in the zoom scans, as appropriate.
2. $SPLSR = (SAR1 + SAR2)1.5 / (\text{min. separation distance, mm})$. If $SPLSR \leq 0.04$ for 1g SAR, simultaneously transmission SAR measurement is not necessary.



Back for WWAN+WLAN2.4GHz_5mm



WWAN+WAN2.4G 5mm											
Case 1	Band	Position	SAR (W/kg)	Gap	SAR peak location (mm)			3D distance (mm)	Summed SAR (W/kg)	SPLSR Results	Simultaneous SAR
	GSM 850			(mm)	X	Y	Z				
	WLAN2.4GHz	Back	0.945	5mm	-20.6	75.6	-1.02	149.0	2.10	0.02	Not required
			1.154	5mm	-3.8	-72.4	-0.33				
Case 2	Band	Position	SAR (W/kg)	Gap	SAR peak location (mm)			3D distance (mm)	Summed SAR (W/kg)	SPLSR Results	Simultaneous SAR
	WCDMA II			(mm)	X	Y	Z				
	WLAN2.4GHz	Back	0.945	5mm	-20.6	75.6	-1.02	159.1	2.16	0.02	Not required
			1.216	5mm	-30.2	-83.2	-0.32				
Case 3	Band	Position	SAR (W/kg)	Gap	SAR peak location (mm)			3D distance (mm)	Summed SAR (W/kg)	SPLSR Results	Simultaneous SAR
	WCDMA IV			(mm)	X	Y	Z				
	WLAN2.4GHz	Back	0.945	5mm	-20.6	75.6	-1.02	157.2	2.31	0.02	Not required
			1.369	5mm	-25.4	-81.5	-0.26				
Case 4	Band	Position	SAR (W/kg)	Gap	SAR peak location (mm)			3D distance (mm)	Summed SAR (W/kg)	SPLSR Results	Simultaneous SAR
	LTE Band 7			(mm)	X	Y	Z				
	WLAN2.4GHz	Back	0.945	5mm	-20.6	75.6	-1.02	156.5	2.13	0.02	Not required
			1.189	5mm	-32.6	-80.4	-0.39				
Case 5	Band	Position	SAR (W/kg)	Gap	SAR peak location (mm)			3D distance (mm)	Summed SAR (W/kg)	SPLSR Results	Simultaneous SAR
	GSM1900			(mm)	X	Y	Z				
	WLAN2.4GHz	Back	0.945	5mm	-20.6	75.6	-1.02	158.9	1.81	0.02	Not required
			0.861	5mm	-15.2	-83.2	-0.93				
Case 6	Band	Position	SAR (W/kg)	Gap	SAR peak location (mm)			3D distance (mm)	Summed SAR (W/kg)	SPLSR Results	Simultaneous SAR
	WCDMA V			(mm)	X	Y	Z				
	WLAN2.4GHz	Back	0.945	5mm	-20.6	75.6	-1.02	148.3	1.74	0.02	Not required
			0.791	5mm	-11.8	-72.4	-0.32				
Case 7	Band	Position	SAR (W/kg)	Gap	SAR peak location (mm)			3D distance (mm)	Summed SAR (W/kg)	SPLSR Results	Simultaneous SAR
	LTE Band 2			(mm)	X	Y	Z				
	WLAN2.4GHz	Back	0.945	5mm	-20.6	75.6	-1.02	161.6	1.81	0.02	Not required
			0.869	5mm	-16.5	-85.9	-0.89				
Case 8	Band	Position	SAR (W/kg)	Gap	SAR peak location (mm)			3D distance (mm)	Summed SAR (W/kg)	SPLSR Results	Simultaneous SAR
	LTE Band 5			(mm)	X	Y	Z				
	WLAN2.4GHz	Back	0.945	5mm	-20.6	75.6	-1.02	152.4	1.66	0.01	Not required
			0.71	5mm	-0.6	-75.5	-0.33				
Case 9	Band	Position	SAR (W/kg)	Gap	SAR peak location (mm)			3D distance (mm)	Summed SAR (W/kg)	SPLSR Results	Simultaneous SAR
	LTE Band 66			(mm)	X	Y	Z				
	WLAN2.4GHz	Back	0.945	5mm	-20.6	75.6	-1.02	155.7	2.18	0.02	Not required
			1.238	5mm	-13.7	-79.9	-0.91				

Test Engineer : Nick Hu, John Liu, Hank Chang, Yuankai Kong



16. Uncertainty Assessment

Per KDB 865664 D01 SAR measurement 100MHz to 6GHz, when the highest measured 1-g SAR within a frequency band is < 1.5 W/kg and the measured 10-g SAR within a frequency band is < 3.75 W/kg. The expanded SAR measurement uncertainty must be $\leq 30\%$, for a confidence interval of $k = 2$. If these conditions are met, extensive SAR measurement uncertainty analysis described in IEEE Std 1528-2013 is not required in SAR reports submitted for equipment approval. For this device, the highest measured 1-g SAR is less 1.5W/kg and highest measured 10-g SAR is less 3.75W/kg. Therefore, the measurement uncertainty table is not required in this report.



17. References

- [1] FCC 47 CFR Part 2 "Frequency Allocations and Radio Treaty Matters; General Rules and Regulations"
- [2] ANSI/IEEE Std. C95.1-1992, "IEEE Standard for Safety Levels with Respect to Human Exposure to Radio Frequency Electromagnetic Fields, 3 kHz to 300 GHz", September 1992
- [3] IEEE Std. 1528-2013, "IEEE Recommended Practice for Determining the Peak Spatial-Average Specific Absorption Rate (SAR) in the Human Head from Wireless Communications Devices: Measurement Techniques", Sep 2013
- [4] SPEAG DASY System Handbook
- [5] FCC KDB 865664 D01 v01r04, "SAR Measurement Requirements for 100 MHz to 6 GHz", Aug 2015.
- [6] FCC KDB 865664 D02 v01r02, "RF Exposure Compliance Reporting and Documentation Considerations" Oct 2015.
- [7] FCC KDB 447498 D01 v06, "Mobile and Portable Device RF Exposure Procedures and Equipment Authorization Policies", Oct 2015
- [8] FCC KDB 648474 D04 v01r03, "SAR Evaluation Considerations for Wireless Handsets", Oct 2015.
- [9] FCC KDB 248227 D01 v02r02, "SAR Guidance for IEEE 802.11 (WiFi) Transmitters", Oct 2015.
- [10] FCC KDB 941225 D01 v03r01, "3G SAR MEAUREMENT PROCEDURES", Oct 2015
- [11] FCC KDB 941225 D05 v02r05, "SAR Evaluation Considerations for LTE Devices", Dec 2015
- [12] FCC KDB 941225 D06 v02r01, "SAR Evaluation Procedures for Portable Devices with Wireless Router Capabilities", Oct 2015.

-----THE END-----



Appendix A. Plots of System Performance Check

The plots are shown as follows.

System Check_Head_835MHz

DUT: D835V2 - SN:4d151

Communication System: UID 0, CW (0); Frequency: 835 MHz; Duty Cycle: 1:1

Medium: HSL_835 Medium parameters used: $f = 835 \text{ MHz}$; $\sigma = 0.902 \text{ S/m}$; $\epsilon_r = 41.838$; $\rho = 1000 \text{ kg/m}^3$

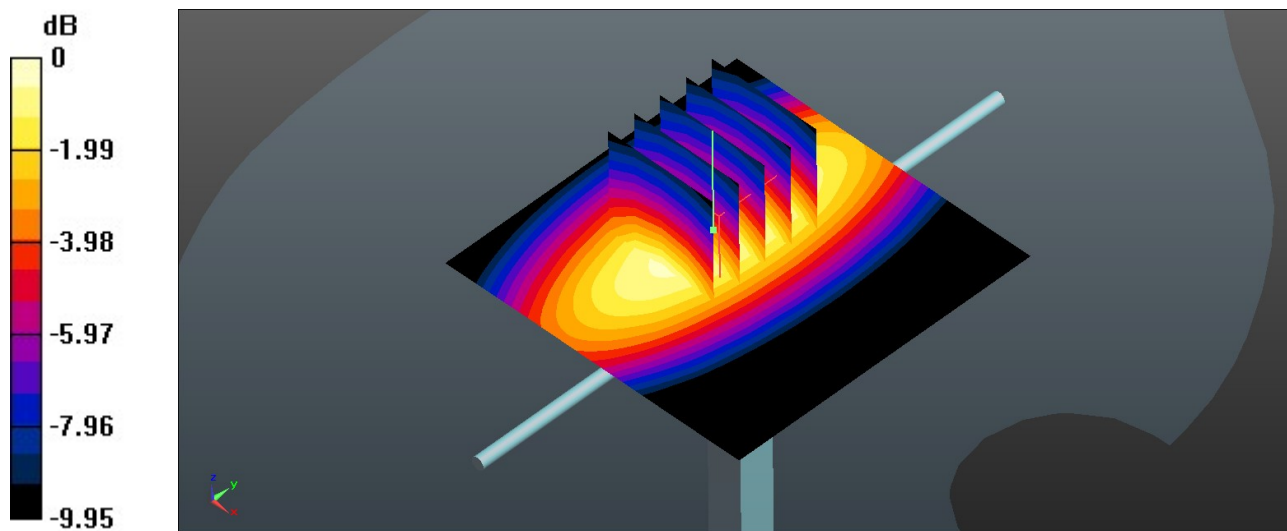
Ambient Temperature : 23.2 °C; Liquid Temperature : 22.6 °C

DASY5 Configuration:

- Probe: ES3DV3 - SN3293; ConvF(6.43, 6.43, 6.43); Calibrated: 2020.9.23
- Sensor-Surface: 3mm (Mechanical Surface Detection)
- Electronics: DAE4 Sn1303; Calibrated: 2020.7.7
- Phantom: SAM2; Type: SAM; Serial: TP-1503
- Measurement SW: DASY52, Version 52.10 (4); SEMCAD X Version 14.6.14 (7483)

Pin=250mW/Area Scan (61x61x1): Interpolated grid: $dx=1.500 \text{ mm}$, $dy=1.500 \text{ mm}$
Maximum value of SAR (interpolated) = 2.70 W/kg

Pin=250mW/Zoom Scan (5x5x7)/Cube 0: Measurement grid: $dx=8\text{mm}$, $dy=8\text{mm}$, $dz=5\text{mm}$
Reference Value = 49.84 V/m; Power Drift = 0.04 dB
Peak SAR (extrapolated) = 3.43 W/kg
SAR(1 g) = 2.36 W/kg; SAR(10 g) = 1.57 W/kg
Maximum value of SAR (measured) = 2.74 W/kg



0 dB = 2.74 W/kg = 4.38 dBW/kg

System Check_Head_1750MHz

DUT: D1750V2 - SN:1090

Communication System: UID 0, CW (0); Frequency: 1750 MHz; Duty Cycle: 1:1
Medium: HSL_1750 Medium parameters used: $f = 1750$ MHz; $\sigma = 1.351$ S/m; $\epsilon_r = 40.38$; $\rho = 1000$ kg/m³

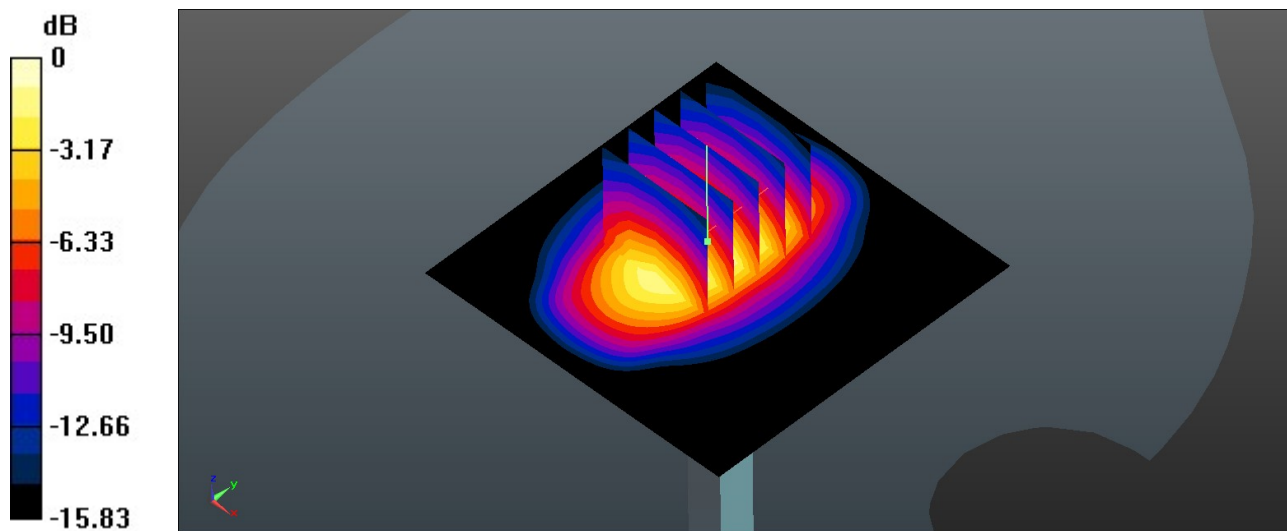
Ambient Temperature : 23.1 °C; Liquid Temperature : 22.9 °C

DASY5 Configuration:

- Probe: ES3DV3 - SN3293; ConvF(5.37, 5.37, 5.37); Calibrated: 2020.9.23
- Sensor-Surface: 3mm (Mechanical Surface Detection)
- Electronics: DAE4 Sn1303; Calibrated: 2020.7.7
- Phantom: SAM2; Type: SAM; Serial: TP-1503
- Measurement SW: DASY52, Version 52.10 (4); SEMCAD X Version 14.6.14 (7483)

Pin=250mW/Area Scan (61x61x1): Interpolated grid: dx=1.500 mm, dy=1.500 mm
Maximum value of SAR (interpolated) = 11.1 W/kg

Pin=250mW/Zoom Scan (5x5x7)/Cube 0: Measurement grid: dx=8mm, dy=8mm, dz=5mm
Reference Value = 77.74 V/m; Power Drift = 0.04 dB
Peak SAR (extrapolated) = 14.7 W/kg
SAR(1 g) = 8.63 W/kg; SAR(10 g) = 4.73 W/kg
Maximum value of SAR (measured) = 10.7 W/kg



0 dB = 10.7 W/kg = 10.29 dBW/kg

System Check_Head_1900MHz

DUT: D1900V2 - SN:5d170

Communication System: UID 0, CW (0); Frequency: 1900 MHz; Duty Cycle: 1:1
Medium: HSL_1900 Medium parameters used: $f = 1900$ MHz; $\sigma = 1.44$ S/m; $\epsilon_r = 39.304$; $\rho = 1000$ kg/m³

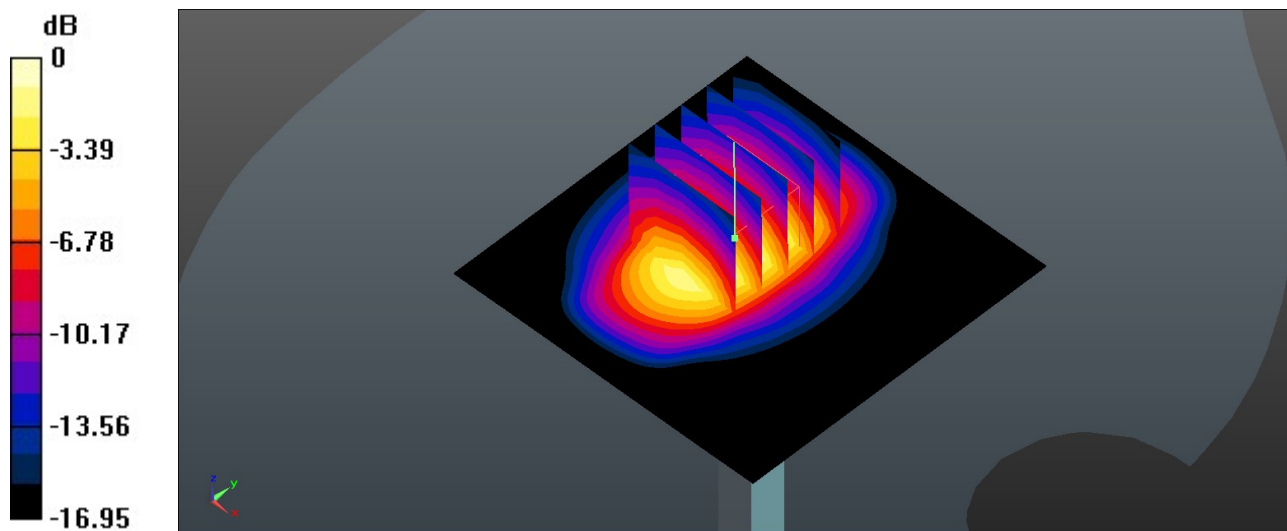
Ambient Temperature : 23.3 °C; Liquid Temperature : 22.8 °C

DASY5 Configuration:

- Probe: ES3DV3 - SN3293; ConvF(5.14, 5.14, 5.14); Calibrated: 2020.9.23
- Sensor-Surface: 3mm (Mechanical Surface Detection)
- Electronics: DAE4 Sn1303; Calibrated: 2020.7.7
- Phantom: SAM2; Type: SAM; Serial: TP-1503
- Measurement SW: DASY52, Version 52.10 (4); SEMCAD X Version 14.6.14 (7483)

Pin=250mW/Area Scan (61x61x1): Interpolated grid: dx=1.500 mm, dy=1.500 mm
Maximum value of SAR (interpolated) = 13.0 W/kg

Pin=250mW/Zoom Scan (5x5x7)/Cube 0: Measurement grid: dx=8mm, dy=8mm, dz=5mm
Reference Value = 76.06 V/m; Power Drift = 0.01 dB
Peak SAR (extrapolated) = 17.7 W/kg
SAR(1 g) = 10.2 W/kg; SAR(10 g) = 5.44 W/kg
Maximum value of SAR (measured) = 12.7 W/kg



0 dB = 12.7 W/kg = 11.04 dBW/kg

System Check_Head_2450MHz

DUT: D2450V2 - SN:908

Communication System: UID 0, CW (0); Frequency: 2450 MHz; Duty Cycle: 1:1

Medium: HSL_2450 Medium parameters used: $f = 2450$ MHz; $\sigma = 1.808$ S/m; $\epsilon_r = 38.576$; $\rho = 1000$ kg/m³

Ambient Temperature : 23.3 °C; Liquid Temperature : 22.9 °C

DASY5 Configuration:

- Probe: ES3DV3 - SN3293; ConvF(4.51, 4.51, 4.51); Calibrated: 2020.9.23
- Sensor-Surface: 3mm (Mechanical Surface Detection)
- Electronics: DAE4 Sn1303; Calibrated: 2020.7.7
- Phantom: SAM2; Type: SAM; Serial: TP-1503
- Measurement SW: DASY52, Version 52.10 (4); SEMCAD X Version 14.6.14 (7483)

Pin=250mW/Area Scan (71x71x1): Interpolated grid: dx=1.200 mm, dy=1.200 mm

Maximum value of SAR (interpolated) = 16.9 W/kg

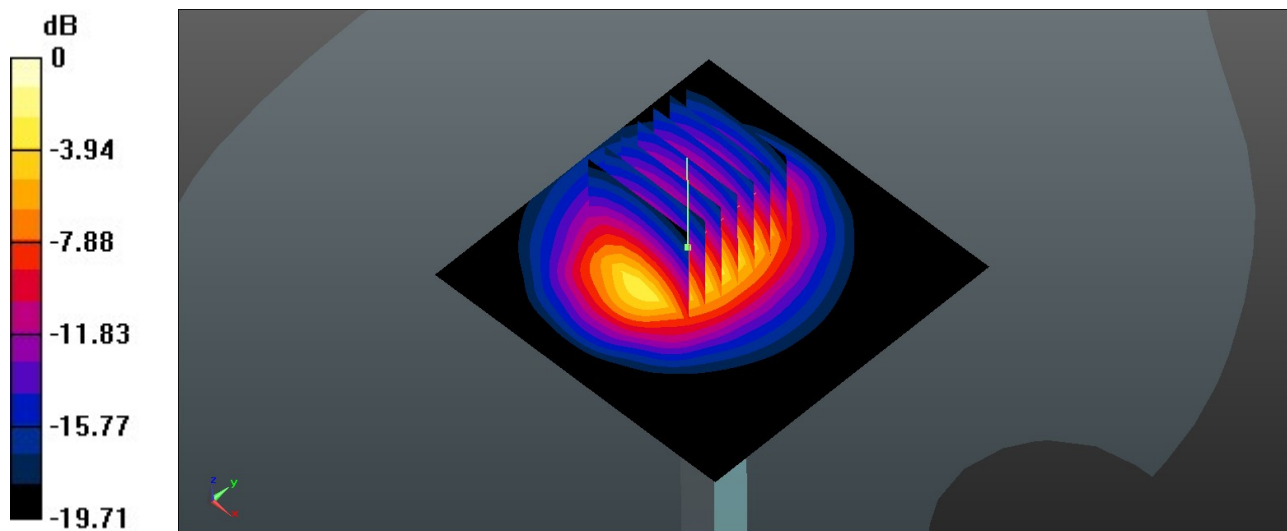
Pin=250mW/Zoom Scan (7x7x7)/Cube 0: Measurement grid: dx=5mm, dy=5mm, dz=5mm

Reference Value = 75.10 V/m; Power Drift = 0.06 dB

Peak SAR (extrapolated) = 23.4 W/kg

SAR(1 g) = 12.3 W/kg; SAR(10 g) = 5.96 W/kg

Maximum value of SAR (measured) = 16.0 W/kg



0 dB = 16.0 W/kg = 12.04 dBW/kg

System Check_Head_2600MHz

DUT: D2600V2 - SN:1061

Communication System: UID 0, CW (0); Frequency: 2600 MHz; Duty Cycle: 1:1
Medium: HSL_2600 Medium parameters used: $f = 2600$ MHz; $\sigma = 1.927$ S/m; $\epsilon_r = 38.27$; $\rho = 1000$ kg/m³

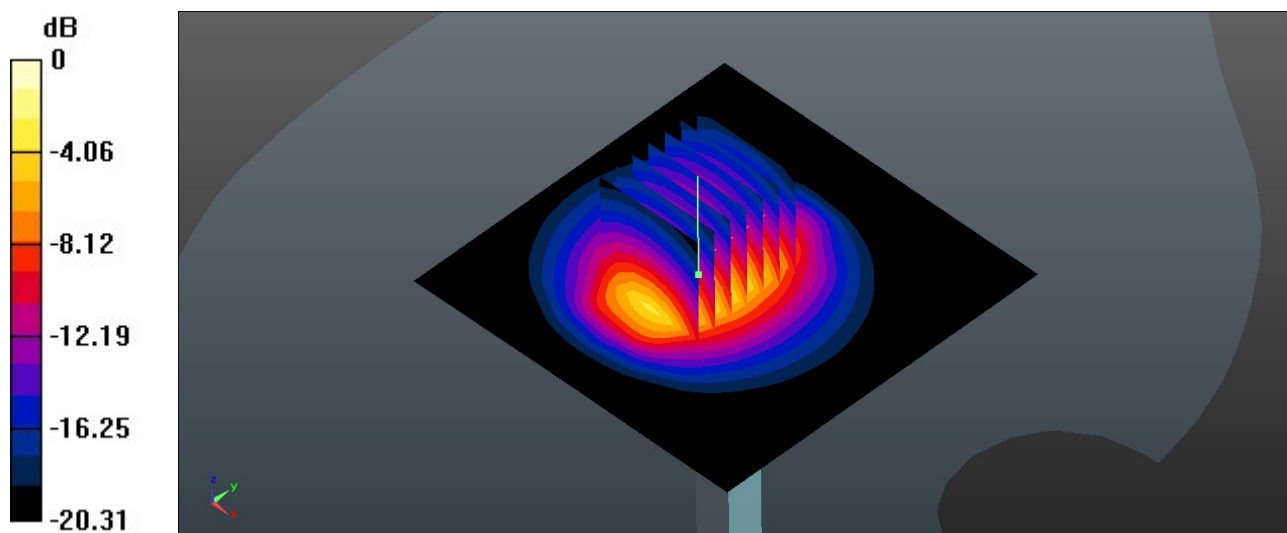
Ambient Temperature : 23.3 °C; Liquid Temperature : 22.7 °C

DASY5 Configuration:

- Probe: ES3DV3 - SN3293; ConvF(4.38, 4.38, 4.38); Calibrated: 2020.9.23
- Sensor-Surface: 3mm (Mechanical Surface Detection)
- Electronics: DAE4 Sn1303; Calibrated: 2020.7.7
- Phantom: SAM2; Type: SAM; Serial: TP-1503
- Measurement SW: DASY52, Version 52.10 (4); SEMCAD X Version 14.6.14 (7483)

Pin=250mW/Area Scan (81x81x1): Interpolated grid: dx=1.200 mm, dy=1.200 mm
Maximum value of SAR (interpolated) = 18.3 W/kg

Pin=250mW/Zoom Scan (7x7x7)/Cube 0: Measurement grid: dx=5mm, dy=5mm, dz=5mm
Reference Value = 88.89 V/m; Power Drift = 0.04 dB
Peak SAR (extrapolated) = 27.2 W/kg
SAR(1 g) = 13.3 W/kg; SAR(10 g) = 6.16 W/kg
Maximum value of SAR (measured) = 17.7 W/kg



0 dB = 17.7 W/kg = 12.48 dBW/kg



Appendix B. Plots of High SAR Measurement

The plots are shown as follows.

01_GSM 850_GPRS 4 Tx slot_Left Cheek_0mm_Ch189

Communication System: UID 0, GSM850 (0); Frequency: 836.4 MHz; Duty Cycle: 1:2.08
Medium: HSL_850 Medium parameters used: $f = 836.4$ MHz; $\sigma = 0.915$ S/m; $\epsilon_r = 41.654$; $\rho = 1000$ kg/m³

Ambient Temperature : 23.2 °C; Liquid Temperature : 22.6 °C

DASY5 Configuration:

- Probe: ES3DV3 - SN3293; ConvF(6.43, 6.43, 6.43); Calibrated: 2020.9.23
- Sensor-Surface: 3mm (Mechanical Surface Detection)
- Electronics: DAE4 Sn1303; Calibrated: 2020.7.7
- Phantom: SAM2; Type: SAM; Serial: TP-1503
- Measurement SW: DASY52, Version 52.10 (4); SEMCAD X Version 14.6.14 (7483)

Area Scan (81x131x1): Interpolated grid: dx=1.500 mm, dy=1.500 mm

Maximum value of SAR (interpolated) = 0.342 W/kg

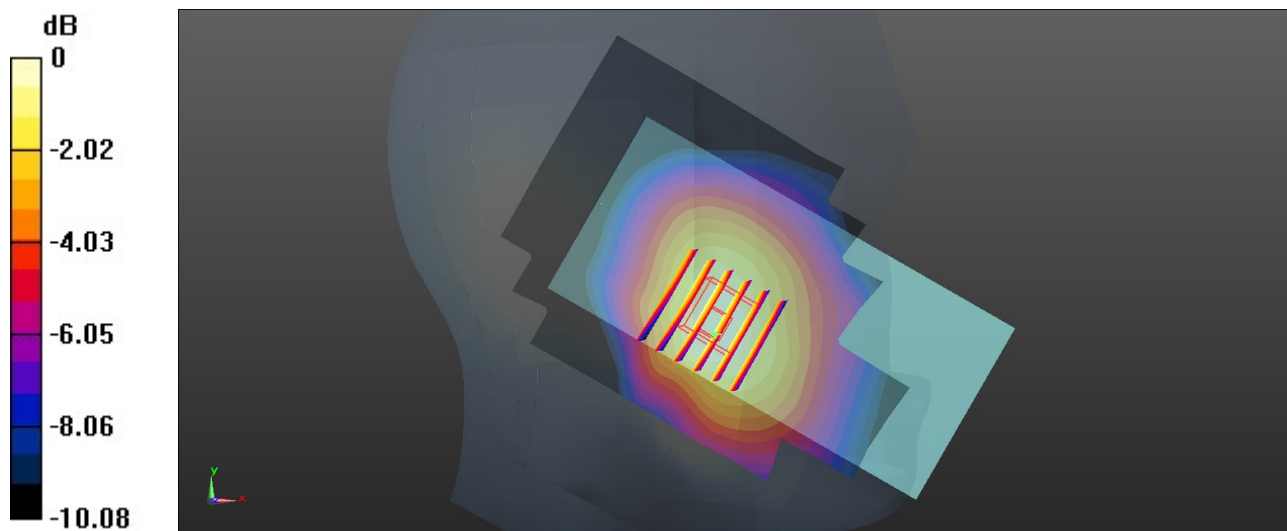
Zoom Scan (6x6x7)/Cube 0: Measurement grid: dx=8mm, dy=8mm, dz=5mm

Reference Value = 6.232 V/m; Power Drift = 0.07 dB

Peak SAR (extrapolated) = 0.389 W/kg

SAR(1 g) = 0.224 W/kg; SAR(10 g) = 0.204 W/kg

Maximum value of SAR (measured) = 0.331 W/kg



0 dB = 0.331 W/kg = -4.80 dBW/kg

02_GSM 1900_GPRS 4 Tx slot_Left Cheek_0mm_Ch661

Communication System: UID 0, PCS (0); Frequency: 1880 MHz; Duty Cycle: 1:2.08

Medium: HSL_1900 Medium parameters used: $f = 1880$ MHz; $\sigma = 1.429$ S/m; $\epsilon_r = 39.329$; $\rho = 1000$ kg/m³

Ambient Temperature : 23.3 °C; Liquid Temperature : 22.8 °C

DASY5 Configuration:

- Probe: ES3DV3 - SN3293; ConvF(5.14, 5.14, 5.14); Calibrated: 2020.9.23
- Sensor-Surface: 3mm (Mechanical Surface Detection)
- Electronics: DAE4 Sn1303; Calibrated: 2020.7.7
- Phantom: SAM2; Type: SAM; Serial: TP-1503
- Measurement SW: DASY52, Version 52.10 (4); SEMCAD X Version 14.6.14 (7483)

Area Scan (81x91x1): Interpolated grid: dx=1.500 mm, dy=1.500 mm

Maximum value of SAR (interpolated) = 0.148 W/kg

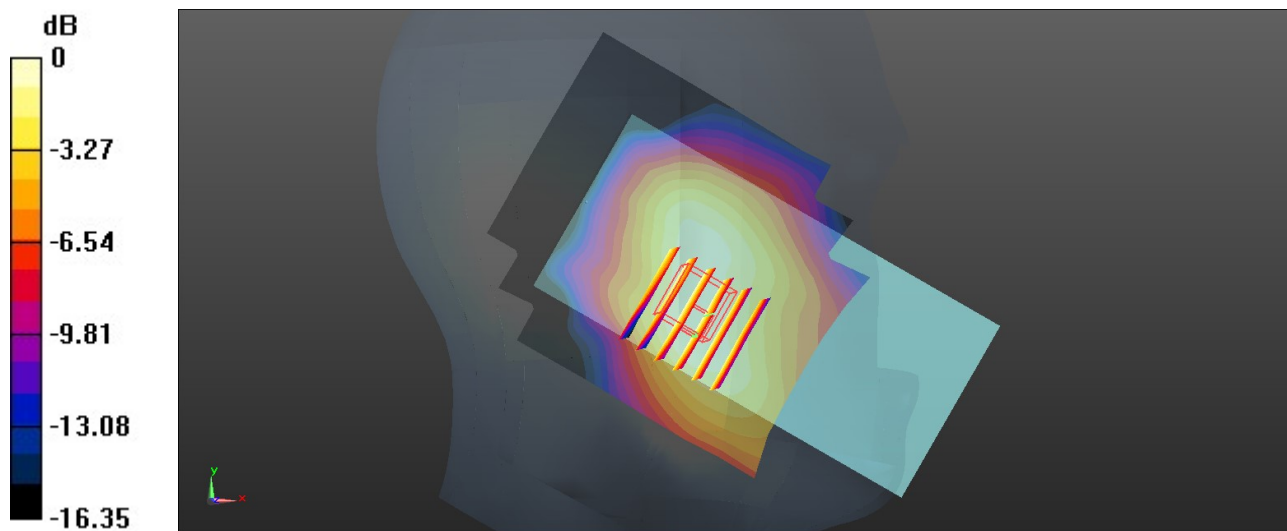
Zoom Scan (6x6x7)/Cube 0: Measurement grid: dx=8mm, dy=8mm, dz=5mm

Reference Value = 2.613 V/m; Power Drift = 0.03 dB

Peak SAR (extrapolated) = 0.179 W/kg

SAR(1 g) = 0.125 W/kg; SAR(10 g) = 0.084 W/kg

Maximum value of SAR (measured) = 0.140 W/kg



0 dB = 0.140 W/kg = -8.54 dBW/kg

03_WCDMA II_RMC 12.2Kbps_Left Cheek_0mm_Ch9400

Communication System: UID 0, WCDMA (0); Frequency: 1880 MHz; Duty Cycle: 1:1
Medium: HSL_1900 Medium parameters used: $f = 1880$ MHz; $\sigma = 1.445$ S/m; $\epsilon_r = 39.295$; $\rho = 1000$ kg/m³

Ambient Temperature : 23.3 °C; Liquid Temperature : 22.8 °C

DASY5 Configuration:

- Probe: ES3DV3 - SN3293; ConvF(5.14, 5.14, 5.14); Calibrated: 2020.9.23
- Sensor-Surface: 3mm (Mechanical Surface Detection)
- Electronics: DAE4 Sn1303; Calibrated: 2020.7.7
- Phantom: SAM2; Type: SAM; Serial: TP-1503
- Measurement SW: DASY52, Version 52.10 (4); SEMCAD X Version 14.6.14 (7483)

Area Scan (81x91x1): Interpolated grid: dx=1.500 mm, dy=1.500 mm

Maximum value of SAR (interpolated) = 0.300 W/kg

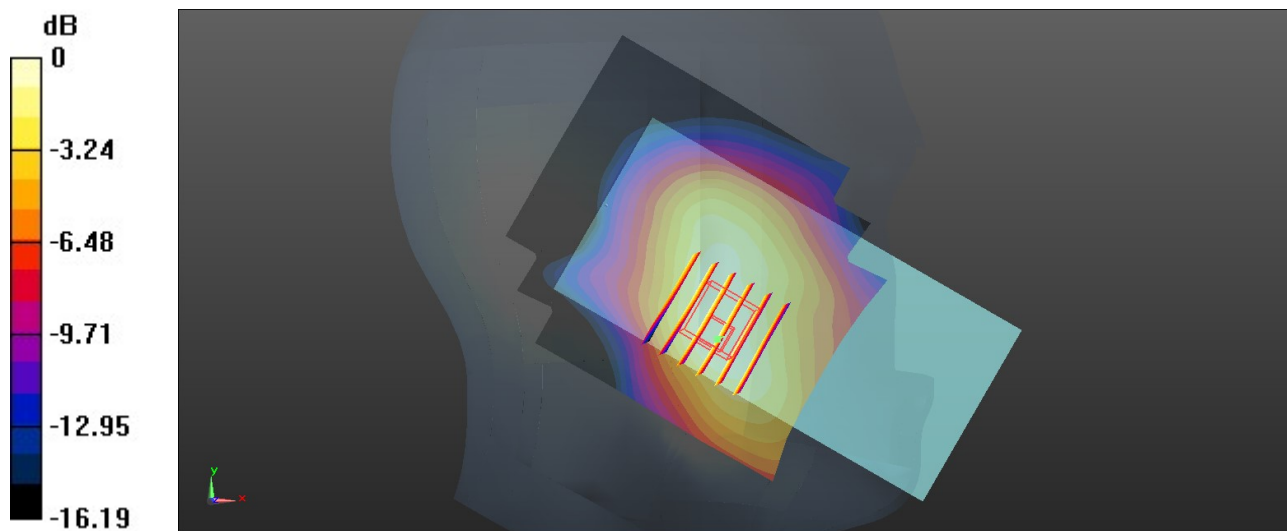
Zoom Scan (6x6x7)/Cube 0: Measurement grid: dx=8mm, dy=8mm, dz=5mm

Reference Value = 3.963 V/m; Power Drift = -0.06 dB

Peak SAR (extrapolated) = 0.348 W/kg

SAR(1 g) = 0.219 W/kg; SAR(10 g) = 0.147 W/kg

Maximum value of SAR (measured) = 0.285 W/kg



0 dB = 0.285 W/kg = -5.45 dBW/kg

04_WCDMA IV_RMC 12.2Kbps_Right Cheek_0mm_Ch1413

Communication System: UID 0, WCDMA (0); Frequency: 1732.6 MHz; Duty Cycle: 1:1
 Medium: HSL_1750 Medium parameters used: $f = 1733$ MHz; $\sigma = 1.354$ S/m; $\epsilon_r = 40.367$; $\rho = 1000$ kg/m³

Ambient Temperature : 23.1 °C; Liquid Temperature : 22.9 °C

DASY5 Configuration:

- Probe: ES3DV3 - SN3293; ConvF(5.37, 5.37, 5.37); Calibrated: 2020.9.23
- Sensor-Surface: 3mm (Mechanical Surface Detection)
- Electronics: DAE4 Sn1303; Calibrated: 2020.7.7
- Phantom: SAM2; Type: SAM; Serial: TP-1503
- Measurement SW: DASY52, Version 52.10 (4); SEMCAD X Version 14.6.14 (7483)

Area Scan (81x91x1): Interpolated grid: dx=1.500 mm, dy=1.500 mm

Maximum value of SAR (interpolated) = 0.264 W/kg

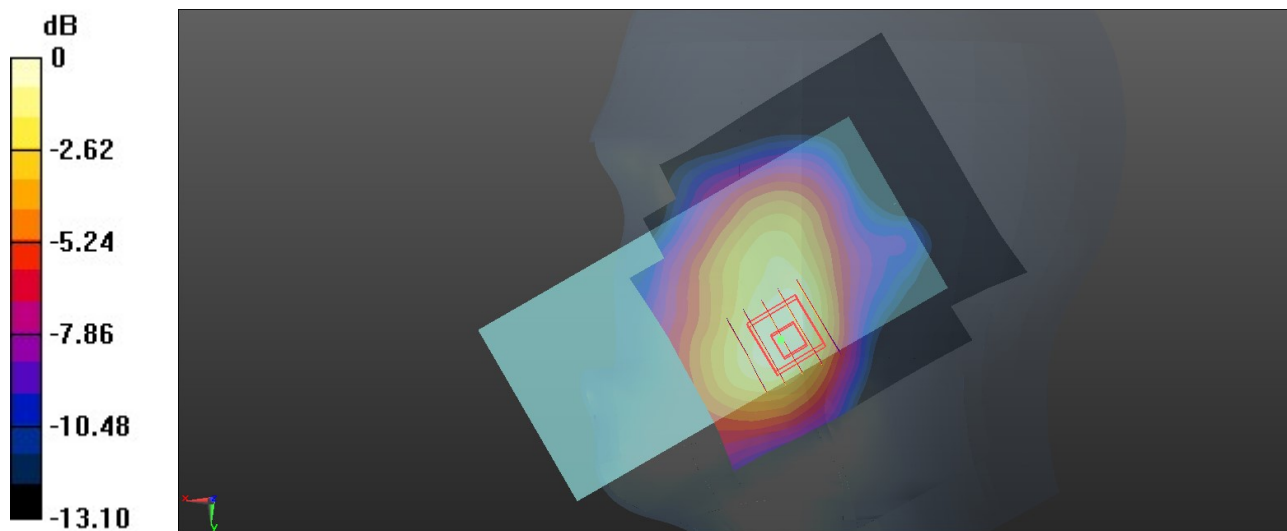
Zoom Scan (5x5x7)/Cube 0: Measurement grid: dx=8mm, dy=8mm, dz=5mm

Reference Value = 3.569 V/m; Power Drift = 0.11 dB

Peak SAR (extrapolated) = 0.306 W/kg

SAR(1 g) = 0.208 W/kg; SAR(10 g) = 0.146 W/kg

Maximum value of SAR (measured) = 0.254 W/kg



0 dB = 0.254 W/kg = -5.95 dBW/kg

05_WCDMA V_RMC 12.2Kbps_Left Cheek_0mm_Ch4182

Communication System: UID 0, WCDMA (0); Frequency: 836.4 MHz; Duty Cycle: 1:1
Medium: HSL_850 Medium parameters used: $f = 836.4$ MHz; $\sigma = 0.913$ S/m; $\epsilon_r = 41.681$; $\rho = 1000$ kg/m³

Ambient Temperature : 23.2 °C; Liquid Temperature : 22.6 °C

DASY5 Configuration:

- Probe: ES3DV3 - SN3293; ConvF(6.43, 6.43, 6.43); Calibrated: 2020.9.23
- Sensor-Surface: 3mm (Mechanical Surface Detection)
- Electronics: DAE4 Sn1303; Calibrated: 2020.7.7
- Phantom: SAM2; Type: SAM; Serial: TP-1503
- Measurement SW: DASY52, Version 52.10 (4); SEMCAD X Version 14.6.14 (7483)

Area Scan (81x91x1): Interpolated grid: dx=1.500 mm, dy=1.500 mm

Maximum value of SAR (interpolated) = 0.249 W/kg

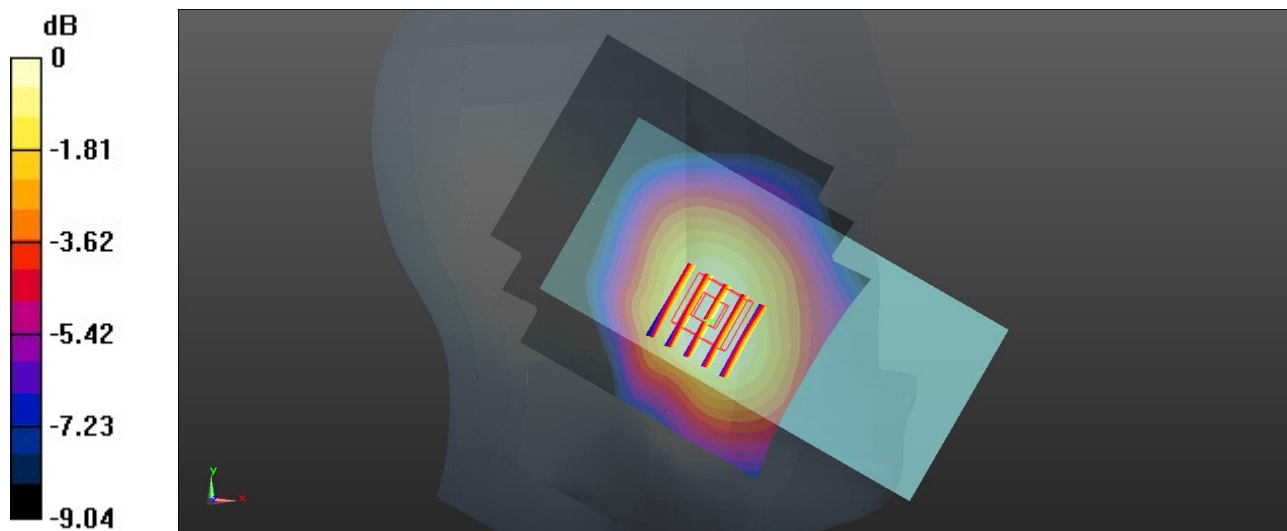
Zoom Scan (5x5x7)/Cube 0: Measurement grid: dx=8mm, dy=8mm, dz=5mm

Reference Value = 5.490 V/m; Power Drift = 0.09 dB

Peak SAR (extrapolated) = 0.270 W/kg

SAR(1 g) = 0.191 W/kg; SAR(10 g) = 0.147 W/kg

Maximum value of SAR (measured) = 0.234 W/kg



0 dB = 0.234 W/kg = -6.31 dBW/kg

06_LTE Band 2_20M_QPSK_1RB_0Offset_Left Cheek_0mm_Ch18900

Communication System: UID 0, LTE-FDD (0); Frequency: 1880 MHz; Duty Cycle: 1:1
Medium: HSL_1900 Medium parameters used: $f = 1880$ MHz; $\sigma = 1.44$ S/m; $\epsilon_r = 39.304$; $\rho = 1000$ kg/m³

Ambient Temperature : 23.3 °C; Liquid Temperature : 22.8 °C

DASY5 Configuration:

- Probe: ES3DV3 - SN3293; ConvF(5.14, 5.14, 5.14); Calibrated: 2020.9.23
- Sensor-Surface: 3mm (Mechanical Surface Detection)
- Electronics: DAE4 Sn1303; Calibrated: 2020.7.7
- Phantom: SAM2; Type: SAM; Serial: TP-1503
- Measurement SW: DASY52, Version 52.10 (4); SEMCAD X Version 14.6.14 (7483)

Area Scan (81x91x1): Interpolated grid: dx=1.500 mm, dy=1.500 mm

Maximum value of SAR (interpolated) = 0.208 W/kg

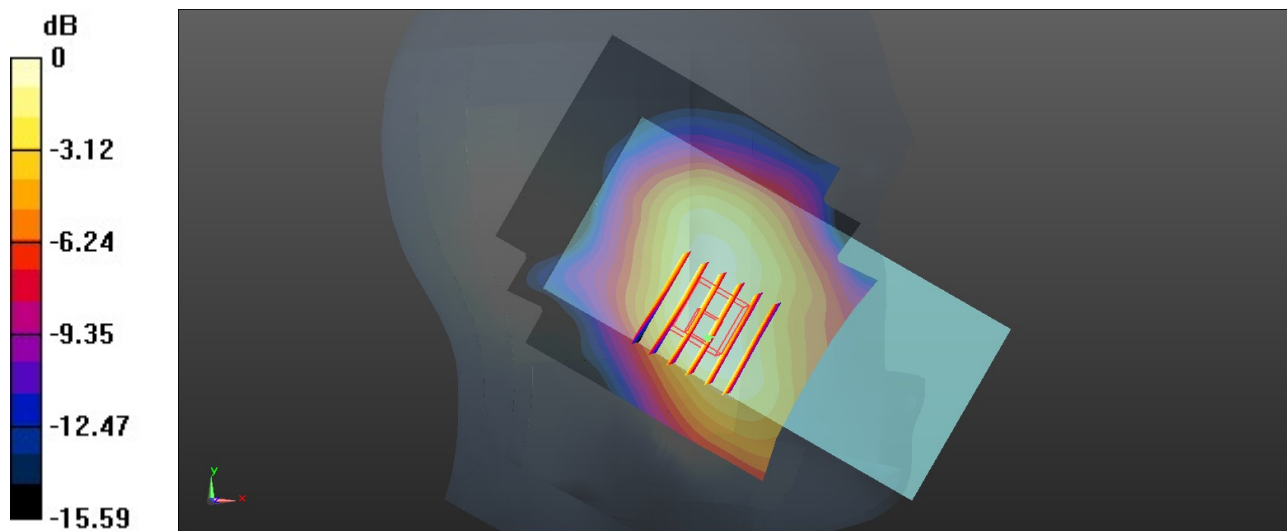
Zoom Scan (6x6x7)/Cube 0: Measurement grid: dx=8mm, dy=8mm, dz=5mm

Reference Value = 3.073 V/m; Power Drift = 0.04 dB

Peak SAR (extrapolated) = 0.239 W/kg

SAR(1 g) = 0.156 W/kg; SAR(10 g) = 0.106 W/kg

Maximum value of SAR (measured) = 0.194 W/kg



0 dB = 0.194 W/kg = -7.12 dBW/kg

07_LTE Band 5_10M_QPSK_1RB_0Offset_Left Cheek_0mm_Ch20525

Communication System: UID 0, LTE-FDD (0); Frequency: 836.5 MHz; Duty Cycle: 1:1
Medium: HSL_850 Medium parameters used: $f = 836.5$ MHz; $\sigma = 0.903$ S/m; $\epsilon_r = 41.819$; $\rho = 1000$ kg/m³

Ambient Temperature : 23.2 °C; Liquid Temperature : 22.6 °C

DASY5 Configuration:

- Probe: ES3DV3 - SN3293; ConvF(6.43, 6.43, 6.43); Calibrated: 2020.9.23
- Sensor-Surface: 3mm (Mechanical Surface Detection)
- Electronics: DAE4 Sn1303; Calibrated: 2020.7.7
- Phantom: SAM2; Type: SAM; Serial: TP-1503
- Measurement SW: DASY52, Version 52.10 (4); SEMCAD X Version 14.6.14 (7483)

Area Scan (81x91x1): Interpolated grid: dx=1.500 mm, dy=1.500 mm

Maximum value of SAR (interpolated) = 0.197 W/kg

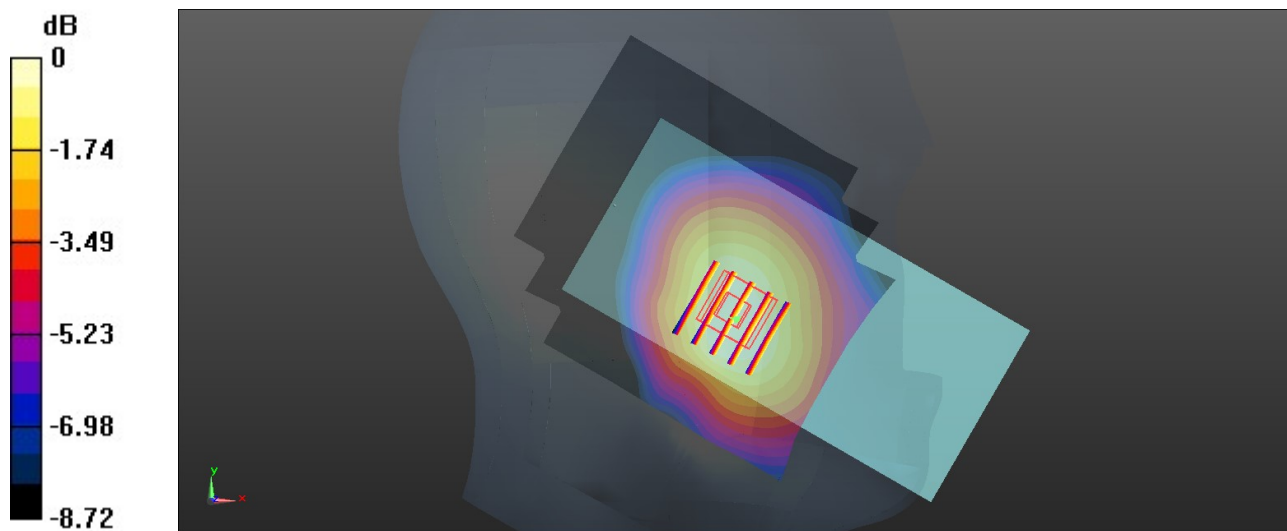
Zoom Scan (5x5x7)/Cube 0: Measurement grid: dx=8mm, dy=8mm, dz=5mm

Reference Value = 4.722 V/m; Power Drift = 0.10 dB

Peak SAR (extrapolated) = 0.217 W/kg

SAR(1 g) = 0.173 W/kg; SAR(10 g) = 0.134 W/kg

Maximum value of SAR (measured) = 0.188 W/kg



0 dB = 0.188 W/kg = -7.26 dBW/kg

08_LTE Band 7_20M_QPSK_1RB_0Offset_Right Cheek_0mm_Ch21100

Communication System: UID 0, LTE-FDD (0); Frequency: 2535 MHz; Duty Cycle: 1:1
Medium: HSL_2600 Medium parameters used: $f = 2535$ MHz; $\sigma = 1.87$ S/m; $\epsilon_r = 38.505$; $\rho = 1000$ kg/m³

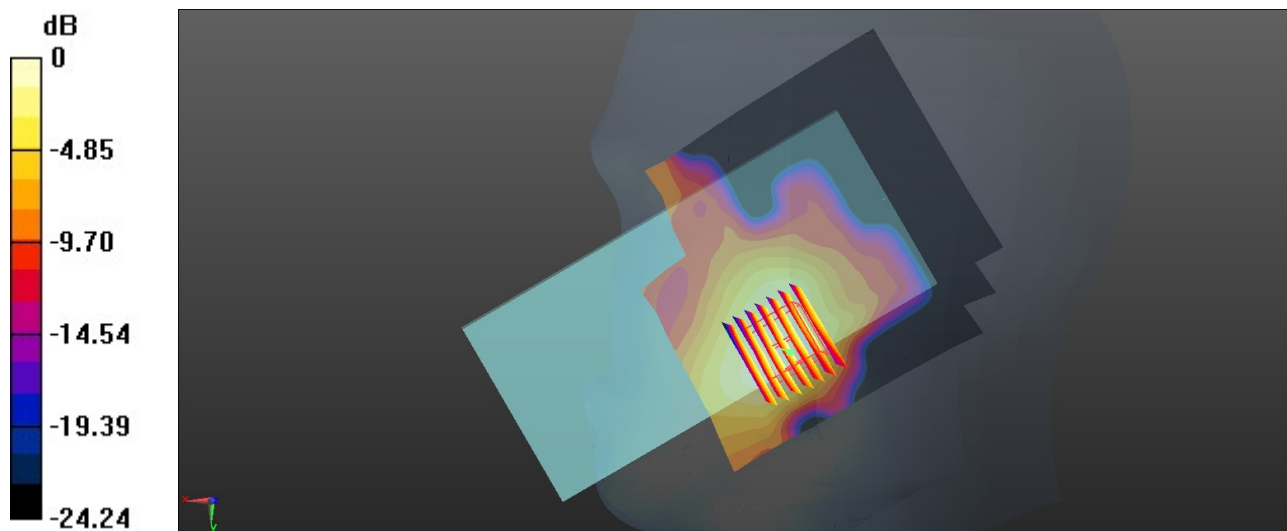
Ambient Temperature : 23.3 °C; Liquid Temperature : 22.7 °C

DASY5 Configuration:

- Probe: ES3DV3 - SN3293; ConvF(4.38, 4.38, 4.38); Calibrated: 2020.9.23
- Sensor-Surface: 3mm (Mechanical Surface Detection)
- Electronics: DAE4 Sn1303; Calibrated: 2020.7.7
- Phantom: SAM2; Type: SAM; Serial: TP-1503
- Measurement SW: DASY52, Version 52.10 (4); SEMCAD X Version 14.6.14 (7483)

Area Scan (101x111x1): Interpolated grid: dx=1.200 mm, dy=1.200 mm
Maximum value of SAR (interpolated) = 0.233 W/kg

Zoom Scan (8x7x7)/Cube 0: Measurement grid: dx=5mm, dy=5mm, dz=5mm
Reference Value = 2.087 V/m; Power Drift = -0.02 dB
Peak SAR (extrapolated) = 0.267 W/kg
SAR(1 g) = 0.155 W/kg; SAR(10 g) = 0.086 W/kg
Maximum value of SAR (measured) = 0.194 W/kg



0 dB = 0.194 W/kg = -7.12 dBW/kg

09_LTE Band 66_20M_QPSK_1RB_0Offset_Left Cheek_0mm_Ch132322

Communication System: UID 0, LTE-FDD (0); Frequency: 1745 MHz; Duty Cycle: 1:1
Medium: HSL_1750 Medium parameters used: $f = 1745$ MHz; $\sigma = 1.345$ S/m; $\epsilon_r = 40.397$; $\rho = 1000$ kg/m³

Ambient Temperature : 23.1 °C; Liquid Temperature : 22.9 °C

DASY5 Configuration:

- Probe: ES3DV3 - SN3293; ConvF(5.37, 5.37, 5.37); Calibrated: 2020.9.23
- Sensor-Surface: 3mm (Mechanical Surface Detection)
- Electronics: DAE4 Sn1303; Calibrated: 2020.7.7
- Phantom: SAM2; Type: SAM; Serial: TP-1503
- Measurement SW: DASY52, Version 52.10 (4); SEMCAD X Version 14.6.14 (7483)

Area Scan (81x91x1): Interpolated grid: dx=1.500 mm, dy=1.500 mm

Maximum value of SAR (interpolated) = 0.164 W/kg

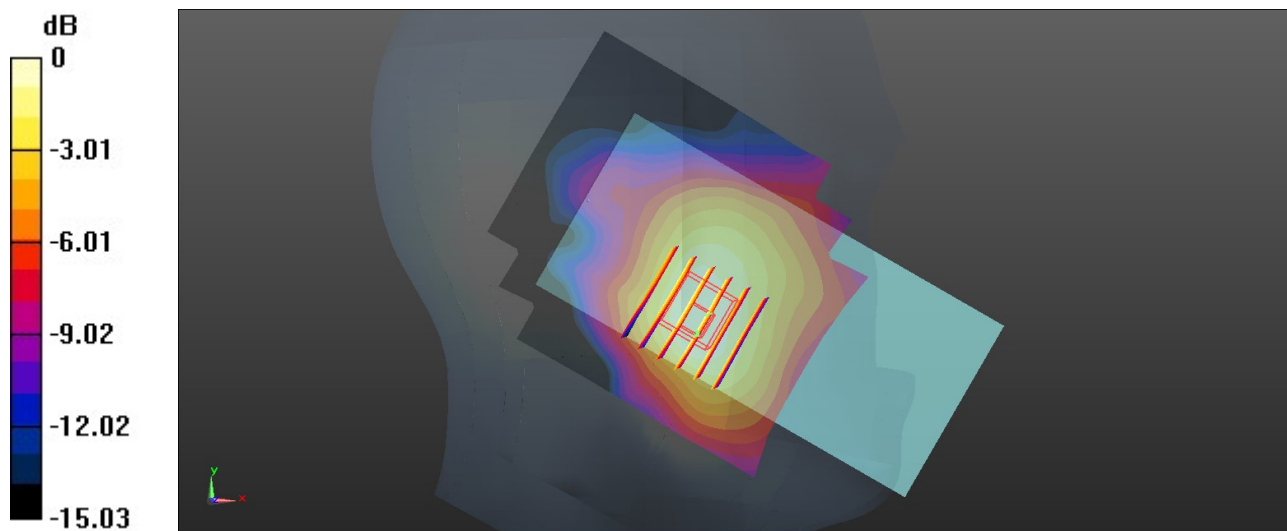
Zoom Scan (6x6x7)/Cube 0: Measurement grid: dx=8mm, dy=8mm, dz=5mm

Reference Value = 4.184 V/m; Power Drift = -0.16 dB

Peak SAR (extrapolated) = 0.195 W/kg

SAR(1 g) = 0.141 W/kg; SAR(10 g) = 0.096 W/kg

Maximum value of SAR (measured) = 0.158 W/kg



0 dB = 0.158 W/kg = -8.01 dBW/kg