

## System Check\_Head\_1900MHz

Communication System: ; Frequency: 1900.0

Medium: HSL\_1900\_210505. Medium parameters used:  $f= 1900.0$  MHz;  $\sigma= 1.43$  S/m;  $\epsilon_r = 41.0$

Ambient Temperature: 23.3°C; Liquid Temperature: 22.3°C

DASY6 Configuration:

- Probe: EX3DV4 - SN3728; ConvF(7.82, 7.82, 7.82); Calibrated: 2021-02-23
- Sensor-Surface: 1.4 mm
- Electronics: DAE4 Sn1424; Calibrated: 2021-01-19
- Phantom: Twin-SAM V4.0 (30deg probe tilt); Serial: 1489; Section: Flat
- Measurement Software: cDASY6 V6.6.0.13926
- UID: CW, 0--
- MAIA: Area Scan: N/A; Zoom Scan: N/A

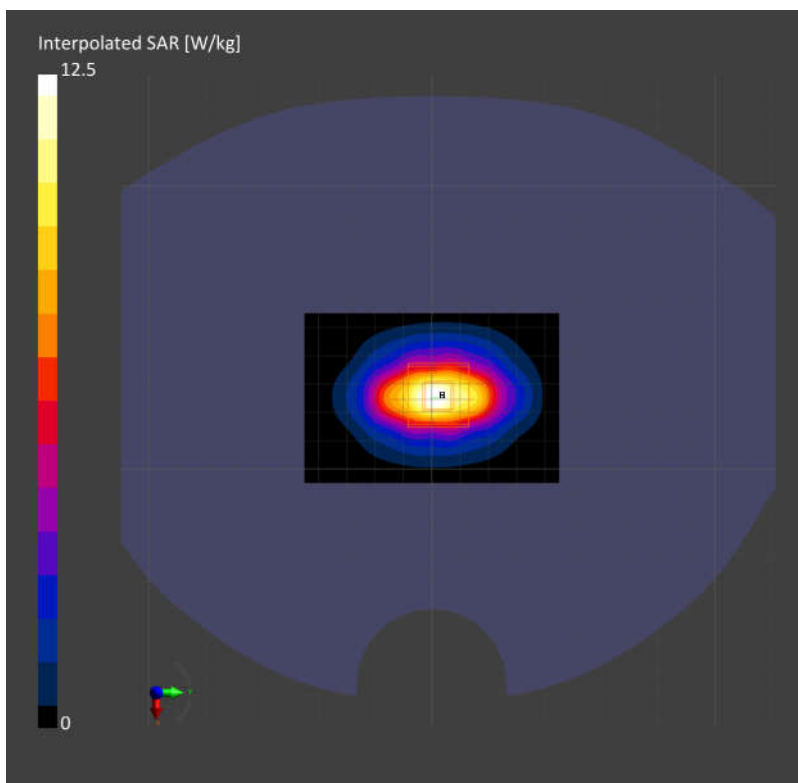
**Area Scan (60.0 mm x 90.0 mm):** Measurement Grid: 15.0 mm x 15.0 mm

SAR (1g) = 9.97 W/kg; SAR (10g) = 5.11 W/kg;

**Zoom Scan (30.0 mm x 30.0 mm x 30.0 mm):** Measurement Grid: 6.0 mm x 6.0 mm x 1.5 mm

Power Drift = -0.00 dB

SAR (1g) = 10.0 W/kg; SAR (10g) = 5.17 W/kg;



## System Check\_Head\_2600MHz

Communication System: ; Frequency: 2600.0

Medium: HSL\_2600\_210505. Medium parameters used:  $f= 2600.0$  MHz;  $\sigma= 2.00$  S/m;  $\epsilon_r = 38.1$

Ambient Temperature: 23.3°C; Liquid Temperature: 22.3°C

DASY6 Configuration:

- Probe: EX3DV4 - SN3728; ConvF(7.08, 7.08, 7.08); Calibrated: 2021-02-23
- Sensor-Surface: 1.4 mm
- Electronics: DAE4 Sn1424; Calibrated: 2021-01-19
- Phantom: Twin-SAM V4.0 (30deg probe tilt); Serial: 1489; Section: Flat
- Measurement Software: cDASY6 V6.6.0.13926
- UID: CW, 0--
- MAIA: Area Scan: N/A; Zoom Scan: N/A

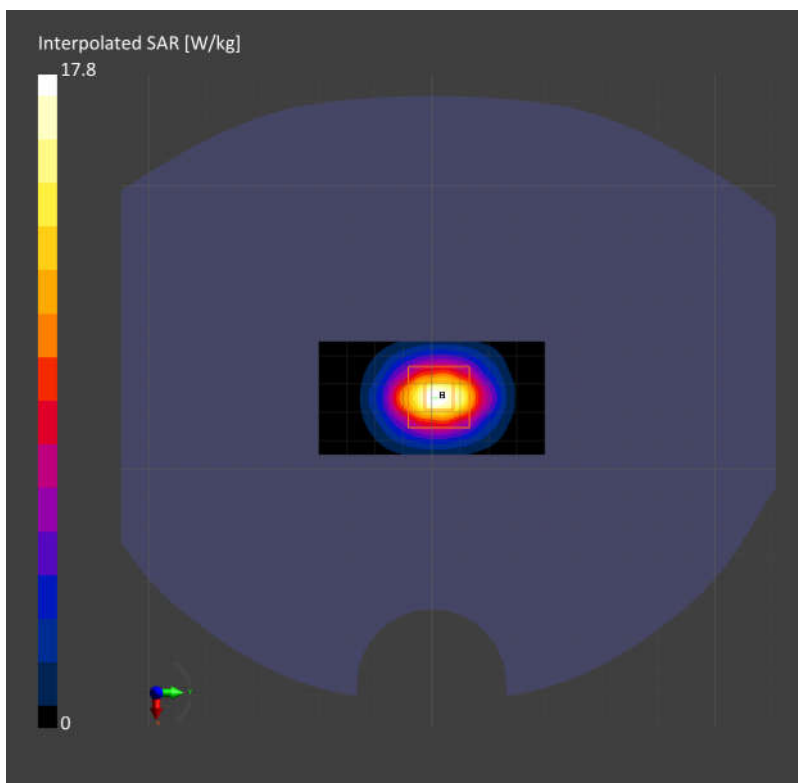
**Area Scan (40.0 mm x 80.0 mm):** Measurement Grid: 10.0 mm x 10.0 mm

SAR (1g) = 13.4 W/kg; SAR (10g) = 6.00 W/kg;

**Zoom Scan (30.0 mm x 30.0 mm x 30.0 mm):** Measurement Grid: 5.0 mm x 5.0 mm x 1.5 mm

Power Drift = 0.00 dB

SAR (1g) = 13.4 W/kg; SAR (10g) = 6.01 W/kg;



## System Check\_Head\_3900MHz

Communication System: ; Frequency: 3900.0

Medium: HSL\_3900\_210511. Medium parameters used:  $f= 3900.0$  MHz;  $\sigma= 3.42$  S/m;  $\epsilon_r = 38.0$

Ambient Temperature: 23.5°C; Liquid Temperature: 22.5°C

DASY6 Configuration:

- Probe: EX3DV4 - SN3931; ConvF(6.52, 6.52, 6.52); Calibrated: 2020-10-22
- Sensor-Surface: 1.4 mm
- Electronics: DAE4 Sn1399; Calibrated: 2020-02-18
- Phantom: Twin-SAM V4.0 (30deg probe tilt); Serial: 1489; Section: Flat
- Measurement Software: cDASY6 V6.6.0.13926
- UID: CW, 0--
- MAIA: Area Scan: N/A; Zoom Scan: N/A

**Area Scan (40.0 mm x 80.0 mm):** Measurement Grid: 10.0 mm x 10.0 mm

SAR (1g) = 3.09 W/kg; SAR (10g) = 1.09 W/kg;

**Zoom Scan (28.0 mm x 28.0 mm x 28.0 mm):** Measurement Grid: 5.0 mm x 5.0 mm x 1.4 mm

Power Drift = 0.01 dB

SAR (1g) = 3.22 W/kg; SAR (10g) = 1.14 W/kg;

