

Test Laboratory: Sporton International Inc.

Device Under Test Properties

Manufacturer	Dimensions [mm]	IMEI	DUT Type
	163.0 x 73.0 x 10.0		Phone

Exposure Conditions

Phantom Section	Position, Test Distance [mm]	Frequency [MHz]	Conversion Factor
5G	EDGE TOP, 2.00	37000.0	1.0

Hardware Setup

Phantom	Medium	Probe, Calibration Date	DAE, Calibration Date
mmWave – xxxx	Air –	EUmmWV4 – SN9441_F1–78GHz, 2020–11–24	DAE4 Sn656, 2021–01–22

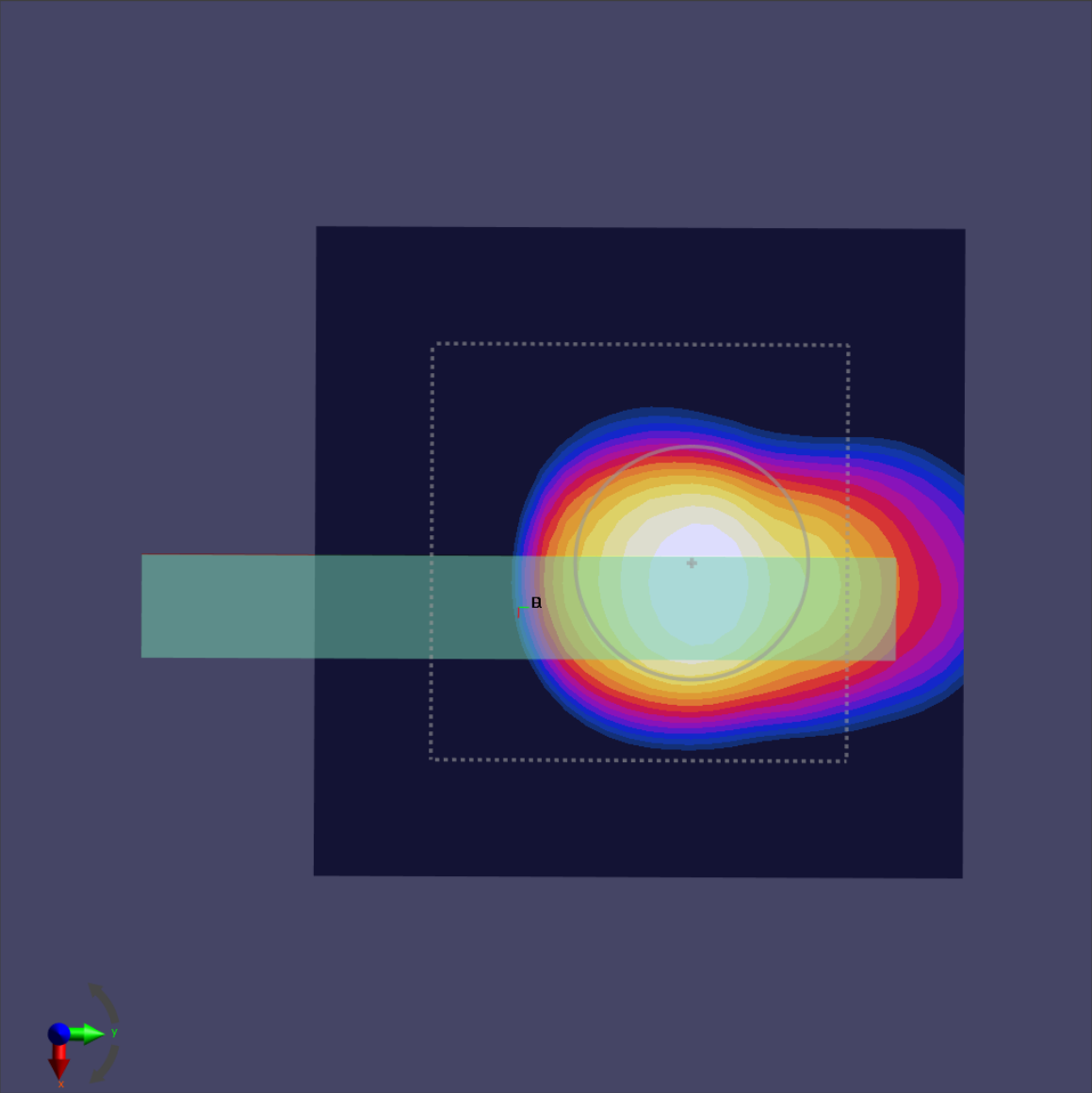
Scans Setup

Grid Extents [mm]	60.0 x 60.0
Grid Steps [lambda]	0.25 x 0.25
Sensor Surface [mm]	2.0

Measurement Results

Date	2021–03–28, 18:01
Avg. Area [cm ²]	4.00
S _{avg inc} [W/m ²]	3.86
S _{avg tot} [W/m ²]	4.77
S _{peak} [W/m ²]	23.9
E _{peak} [V/m]	96.9
H _{peak} [A/m]	0.246
Power Drift [dB]	–0.07

Averaged [4.0 cm²] |Re{S}|(x,y,z,f0) [dB(4.77W/m²)]



Test Laboratory: Sporton International Inc.

Device Under Test Properties

Manufacturer	Dimensions [mm]	IMEI	DUT Type
	163.0 x 73.0 x 10.0		Phone

Exposure Conditions

Phantom Section	Position, Test Distance [mm]	Frequency [MHz]	Conversion Factor
5G	EDGE TOP, 2.00	27925.0	1.0

Hardware Setup

Phantom	Medium	Probe, Calibration Date	DAE, Calibration Date
mmWave – xxxx	Air –	EUmmWV4 – SN9441_F1–78GHz, 2020–11–24	DAE4 Sn656, 2021–01–22

Scans Setup

Grid Extents [mm]	60.0 x 60.0
Grid Steps [lambda]	0.25 x 0.25
Sensor Surface [mm]	2.0

Measurement Results

Date	2021–03–28, 00:11
Avg. Area [cm ²]	4.00
S _{avg inc} [W/m ²]	3.42
S _{avg tot} [W/m ²]	4.28
S _{peak} [W/m ²]	15.1
E _{peak} [V/m]	73.6
H _{peak} [A/m]	0.205
Power Drift [dB]	–0.06

Averaged [4.0 cm²] |Re{S}|(x,y,z,f0) [dB(4.28W/m²)]

