

03_WCDMA II_RMC 12.2Kbps_Left Cheek_0mm_Ch9400

Communication System: UID 0, WCDMA (0); Frequency: 1880 MHz; Duty Cycle: 1:1
Medium: HSL_1900 Medium parameters used: $f = 1880$ MHz; $\sigma = 1.447$ S/m; $\epsilon_r = 40.05$; $\rho = 1000$ kg/m³

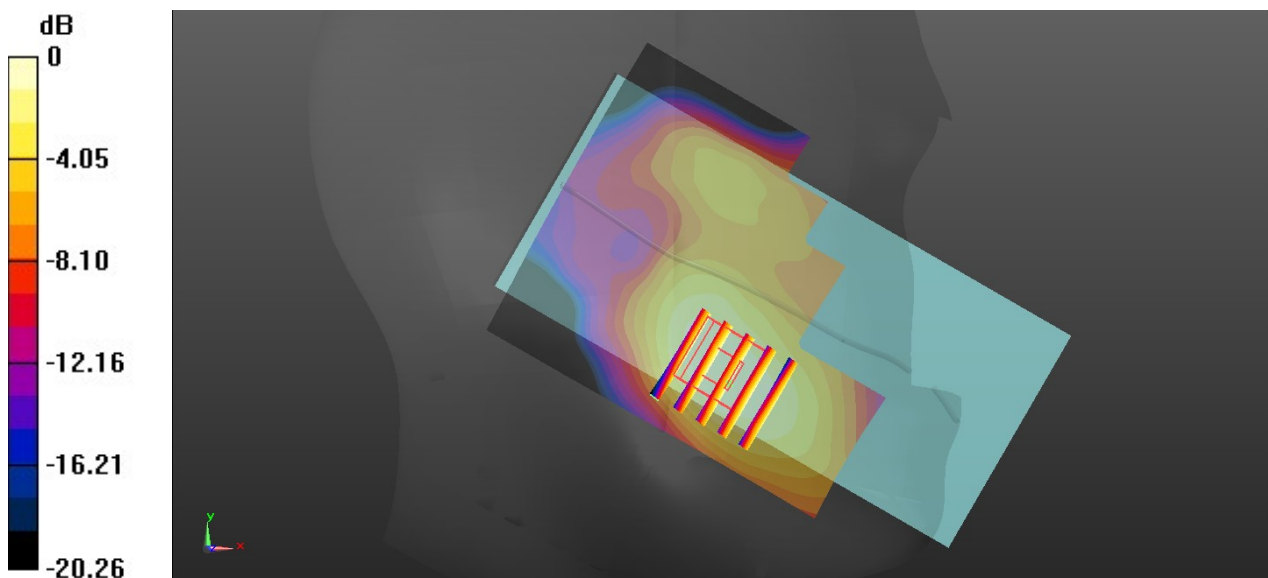
Ambient Temperature : 23.1 °C; Liquid Temperature : 22.7 °C

DASY5 Configuration:

- Probe: EX3DV4 - SN7475; ConvF(8.36, 8.36, 8.36); Calibrated: 2019.10.16
- Sensor-Surface: 1.4mm (Mechanical Surface Detection)
- Electronics: DAE4 Sn787; Calibrated: 2020.3.12
- Phantom: SAM1; Type: SAM; Serial: TP-1461
- Measurement SW: DASY52, Version 52.10 (4); SEMCAD X Version 14.6.14 (7483)

Area Scan (71x81x1): Interpolated grid: dx=1.500 mm, dy=1.500 mm
Maximum value of SAR (interpolated) = 0.118 W/kg

Zoom Scan (5x5x7)/Cube 0: Measurement grid: dx=8mm, dy=8mm, dz=5mm
Reference Value = 2.495 V/m; Power Drift = 0.02 dB
Peak SAR (extrapolated) = 0.141 W/kg
SAR(1 g) = 0.085 W/kg; SAR(10 g) = 0.052 W/kg
Maximum value of SAR (measured) = 0.118 W/kg



0 dB = 0.118 W/kg = -9.28 dBW/kg

04_WCDMA IV_RMC 12.2Kbps_Right Cheek_0mm_Ch1413

Communication System: UID 0, WCDMA (0); Frequency: 1732.6 MHz; Duty Cycle: 1:1
Medium: HSL_1750 Medium parameters used: $f = 1733$ MHz; $\sigma = 1.333$ S/m; $\epsilon_r = 40.452$; $\rho = 1000$ kg/m³

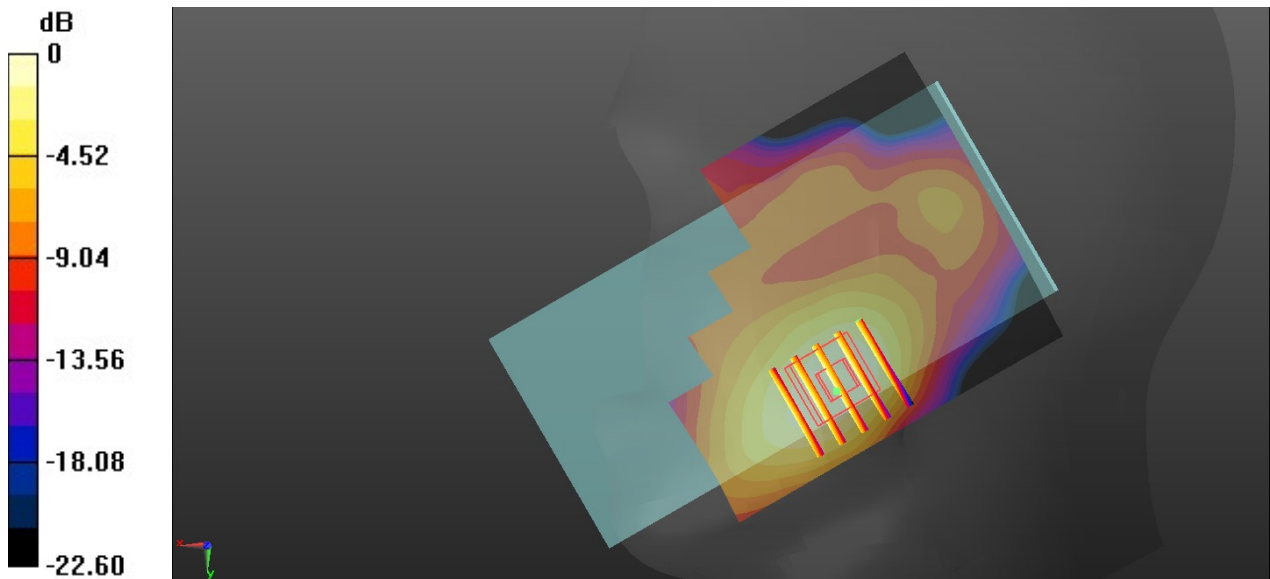
Ambient Temperature : 23.2 °C; Liquid Temperature : 22.9 °C

DASY5 Configuration:

- Probe: EX3DV4 - SN7475; ConvF(8.75, 8.75, 8.75); Calibrated: 2019.10.16
- Sensor-Surface: 1.4mm (Mechanical Surface Detection)
- Electronics: DAE4 Sn787; Calibrated: 2020.3.12
- Phantom: SAM1; Type: SAM; Serial: TP-1461
- Measurement SW: DASY52, Version 52.10 (4); SEMCAD X Version 14.6.14 (7483)

Area Scan (71x81x1): Interpolated grid: dx=1.500 mm, dy=1.500 mm
Maximum value of SAR (interpolated) = 0.182 W/kg

Zoom Scan (5x5x7)/Cube 0: Measurement grid: dx=8mm, dy=8mm, dz=5mm
Reference Value = 3.926 V/m; Power Drift = 0.01 dB
Peak SAR (extrapolated) = 0.200 W/kg
SAR(1 g) = 0.131 W/kg; SAR(10 g) = 0.082 W/kg
Maximum value of SAR (measured) = 0.175 W/kg



05_WCDMA V_RMC 12.2Kbps_Right Cheek_0mm_Ch4132

Communication System: UID 0, LTE-FDD (0); Frequency: 826.4 MHz; Duty Cycle: 1:1
Medium: HSL_850 Medium parameters used: $f = 826.4$ MHz; $\sigma = 0.939$ S/m; $\epsilon_r = 41.264$; $\rho = 1000$ kg/m³

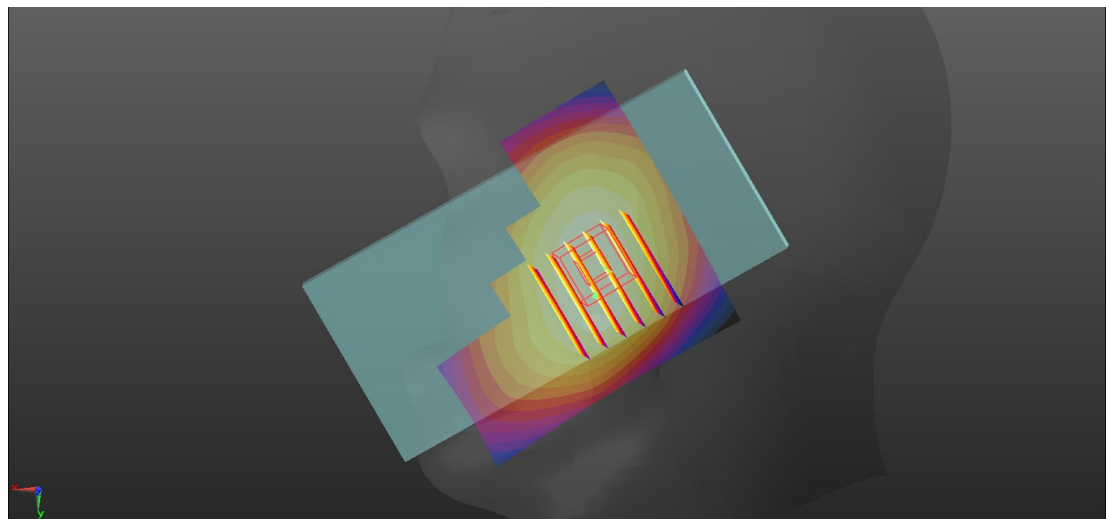
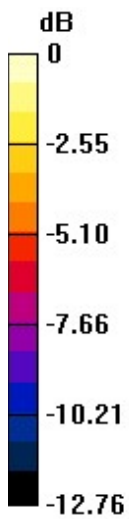
Ambient Temperature : 23.2 °C; Liquid Temperature : 22.8 °C

DASY5 Configuration:

- Probe: EX3DV4 - SN7475; ConvF(9.93, 9.93, 9.93); Calibrated: 2019.10.16
- Sensor-Surface: 1.4mm (Mechanical Surface Detection)
- Electronics: DAE4 Sn787; Calibrated: 2020.3.12
- Phantom: SAM1; Type: SAM; Serial: TP-1461
- Measurement SW: DASY52, Version 52.10 (4); SEMCAD X Version 14.6.14 (7483)

Area Scan (71x71x1): Interpolated grid: dx=1.500 mm, dy=1.500 mm
Maximum value of SAR (interpolated) = 0.455 W/kg

Zoom Scan (6x6x7)/Cube 0: Measurement grid: dx=8mm, dy=8mm, dz=5mm
Reference Value = 6.480 V/m; Power Drift = 0.05 dB
Peak SAR (extrapolated) = 0.499 W/kg
SAR(1 g) = 0.388 W/kg; SAR(10 g) = 0.294 W/kg
Maximum value of SAR (measured) = 0.458 W/kg



0 dB = 0.458 W/kg = -3.39 dBW/kg

06_LTE Band 2_20M_QPSK_1RB_0Offset_Left Cheek_0mm_Ch18900

Communication System: UID 0, LTE-FDD (0); Frequency: 1880 MHz; Duty Cycle: 1:1
 Medium: HSL_1900 Medium parameters used: $f = 1880$ MHz; $\sigma = 1.447$ S/m; $\epsilon_r = 40.05$; $\rho = 1000$ kg/m³

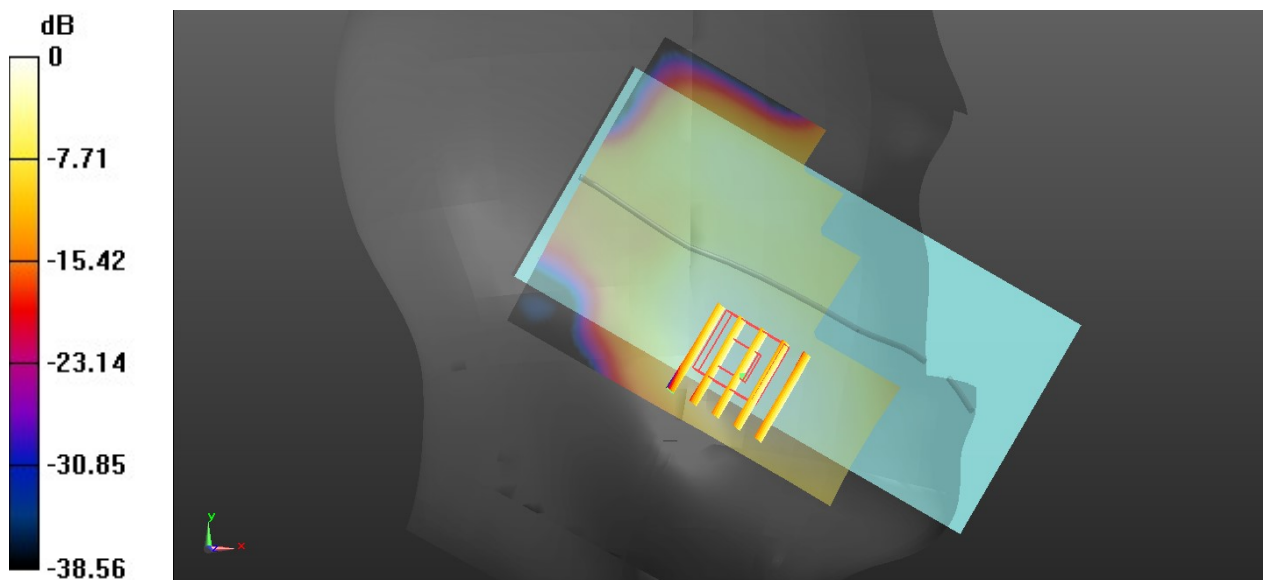
Ambient Temperature : 23.1 °C; Liquid Temperature : 22.7 °C

DASY5 Configuration:

- Probe: EX3DV4 - SN7475; ConvF(8.36, 8.36, 8.36); Calibrated: 2019.10.16
- Sensor-Surface: 1.4mm (Mechanical Surface Detection)
- Electronics: DAE4 Sn787; Calibrated: 2020.3.12
- Phantom: SAM1; Type: SAM; Serial: TP-1461
- Measurement SW: DASY52, Version 52.10 (4); SEMCAD X Version 14.6.14 (7483)

Area Scan (71x81x1): Interpolated grid: dx=1.500 mm, dy=1.500 mm
 Maximum value of SAR (interpolated) = 0.130 W/kg

Zoom Scan (5x5x7)/Cube 0: Measurement grid: dx=8mm, dy=8mm, dz=5mm
 Reference Value = 2.466 V/m; Power Drift = -0.01 dB
 Peak SAR (extrapolated) = 0.152 W/kg
SAR(1 g) = 0.095 W/kg; SAR(10 g) = 0.058 W/kg
 Maximum value of SAR (measured) = 0.129 W/kg



0 dB = 0.129 W/kg = -8.89 dBW/kg

07_LTE Band 5_10M_QPSK_1RB_0offset_Right Cheek_0mm_Ch20525

Communication System: UID 0, LTE-FDD (0); Frequency: 836.5 MHz; Duty Cycle: 1:1
Medium: HSL_850 Medium parameters used: $f = 836.5$ MHz; $\sigma = 0.946$ S/m; $\epsilon_r = 41.246$; $\rho = 1000$ kg/m³

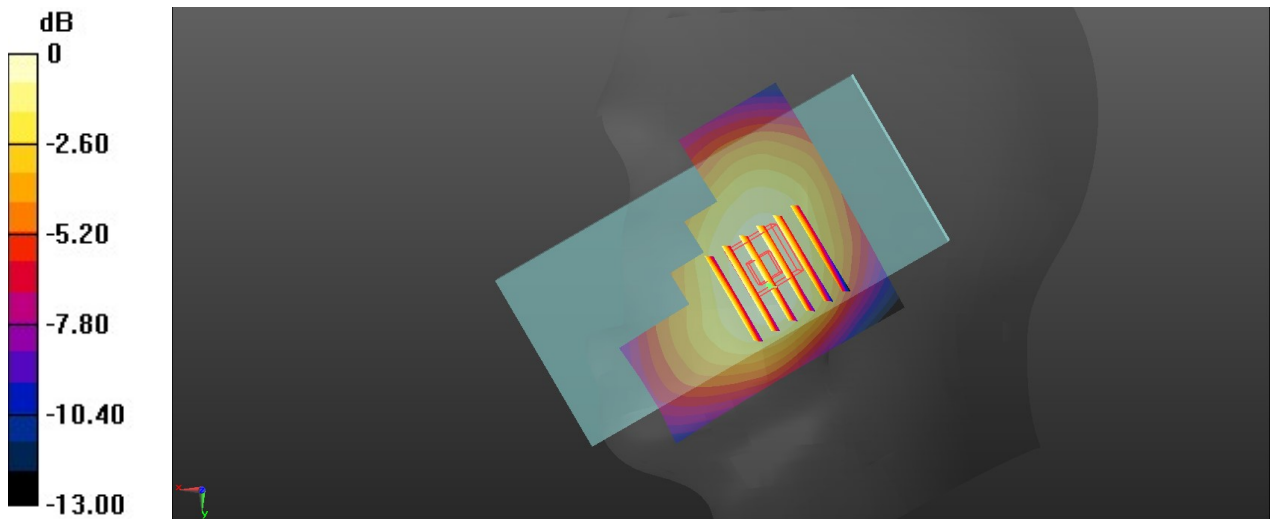
Ambient Temperature : 23.2 °C; Liquid Temperature : 22.8 °C

DASY5 Configuration:

- Probe: EX3DV4 - SN7475; ConvF(9.93, 9.93, 9.93); Calibrated: 2019.10.16
- Sensor-Surface: 1.4mm (Mechanical Surface Detection)
- Electronics: DAE4 Sn787; Calibrated: 2020.3.12
- Phantom: SAM1; Type: SAM; Serial: TP-1461
- Measurement SW: DASY52, Version 52.10 (4); SEMCAD X Version 14.6.14 (7483)

Area Scan (71x71x1): Interpolated grid: dx=1.500 mm, dy=1.500 mm
Maximum value of SAR (interpolated) = 0.430 W/kg

Zoom Scan (6x6x7)/Cube 0: Measurement grid: dx=8mm, dy=8mm, dz=5mm
Reference Value = 5.573 V/m; Power Drift = 0.04 dB
Peak SAR (extrapolated) = 0.466 W/kg
SAR(1 g) = 0.361 W/kg; SAR(10 g) = 0.274 W/kg
Maximum value of SAR (measured) = 0.428 W/kg



0 dB = 0.428 W/kg = -3.69 dBW/kg

08_LTE Band 7_20M_QPSK_1RB_0offset_Right Cheek_0mm_Ch21100

Communication System: UID 0, LTE-FDD (0); Frequency: 2535 MHz; Duty Cycle: 1:1
Medium: HSL_2600 Medium parameters used: $f = 2535$ MHz; $\sigma = 1.911$ S/m; $\epsilon_r = 39.062$; $\rho = 1000$ kg/m³

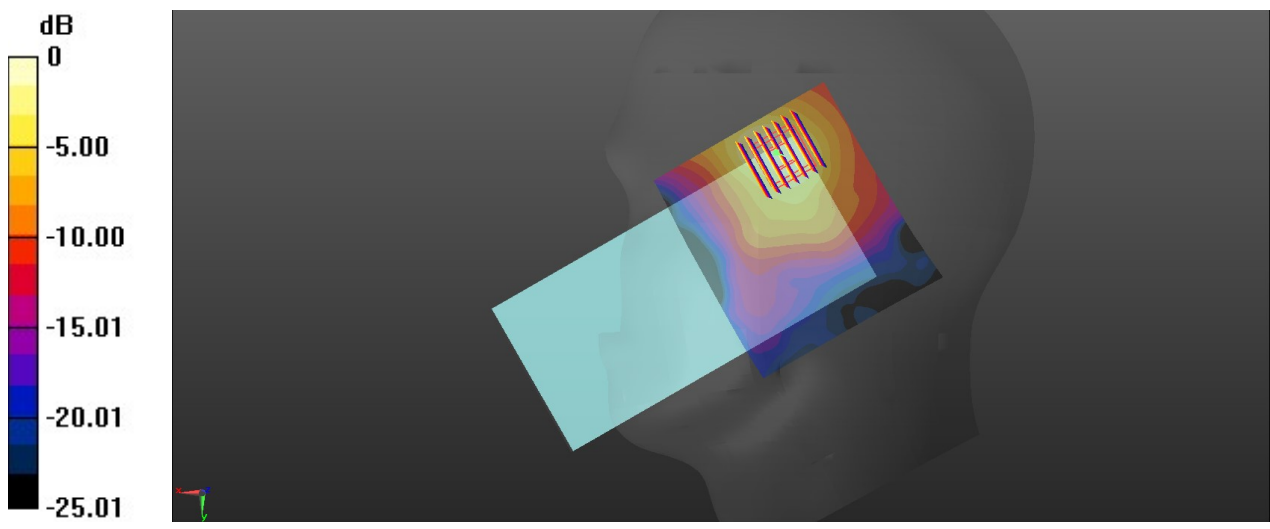
Ambient Temperature : 23.3 °C; Liquid Temperature : 22.6 °C

DASY5 Configuration:

- Probe: EX3DV4 - SN7475; ConvF(7.47, 7.47, 7.47); Calibrated: 2019.10.16
- Sensor-Surface: 1.4mm (Mechanical Surface Detection)
- Electronics: DAE4 Sn787; Calibrated: 2020.3.12
- Phantom: SAM1; Type: SAM; Serial: TP-1461
- Measurement SW: DASY52, Version 52.10 (4); SEMCAD X Version 14.6.14 (7483)

Area Scan (91x81x1): Interpolated grid: dx=1.200 mm, dy=1.200 mm
Maximum value of SAR (interpolated) = 0.841 W/kg

Zoom Scan (7x7x7)/Cube 0: Measurement grid: dx=5mm, dy=5mm, dz=5mm
Reference Value = 8.568 V/m; Power Drift = -0.10 dB
Peak SAR (extrapolated) = 1.12 W/kg
SAR(1 g) = 0.503 W/kg; SAR(10 g) = 0.243 W/kg
Maximum value of SAR (measured) = 0.863 W/kg



0 dB = 0.863 W/kg = -0.64 dBW/kg

09_LTE Band 66_20M_QPSK_1RB_0Offset_Right Cheek_0mm_Ch132322

Communication System: UID 0, LTE-FDD (0); Frequency: 1745 MHz; Duty Cycle: 1:1
Medium: HSL_1750 Medium parameters used: $f = 1745$ MHz; $\sigma = 1.345$ S/m; $\epsilon_r = 40.397$; $\rho = 1000$ kg/m³

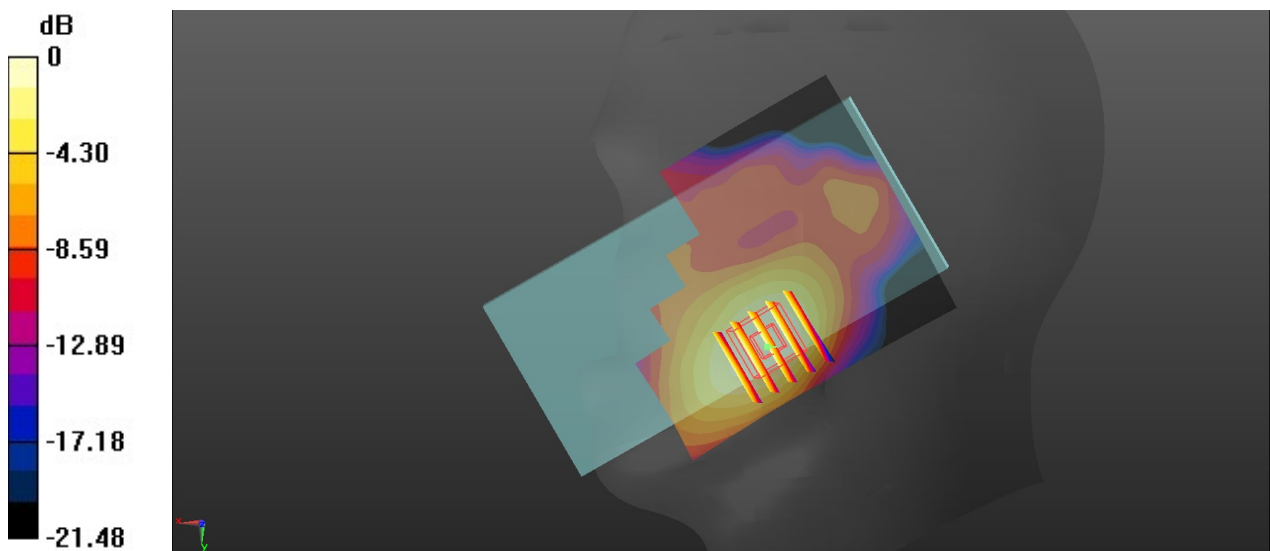
Ambient Temperature : 23.2 °C; Liquid Temperature : 22.9 °C

DASY5 Configuration:

- Probe: EX3DV4 - SN7475; ConvF(8.75, 8.75, 8.75); Calibrated: 2019.10.16
- Sensor-Surface: 1.4mm (Mechanical Surface Detection)
- Electronics: DAE4 Sn787; Calibrated: 2020.3.12
- Phantom: SAM1; Type: SAM; Serial: TP-1461
- Measurement SW: DASY52, Version 52.10 (4); SEMCAD X Version 14.6.14 (7483)

Area Scan (71x81x1): Interpolated grid: dx=1.500 mm, dy=1.500 mm
Maximum value of SAR (interpolated) = 0.182 W/kg

Zoom Scan (5x5x7)/Cube 0: Measurement grid: dx=8mm, dy=8mm, dz=5mm
Reference Value = 3.490 V/m; Power Drift = -0.02 dB
Peak SAR (extrapolated) = 0.195 W/kg
SAR(1 g) = 0.128 W/kg; SAR(10 g) = 0.081 W/kg
Maximum value of SAR (measured) = 0.171 W/kg



0 dB = 0.171 W/kg = -7.67 dBW/kg

10_LTE Band 41_20M_QPSK_1RB_0offset_Right Cheek_0mm_Ch40890

Communication System: UID 0, TDD LTE (0); Frequency: 2620 MHz; Duty Cycle: 1:1.59
Medium: HSL_2600 Medium parameters used: $f = 2620$ MHz; $\sigma = 1.981$ S/m; $\epsilon_r = 40.092$; $\rho = 1000$ kg/m³

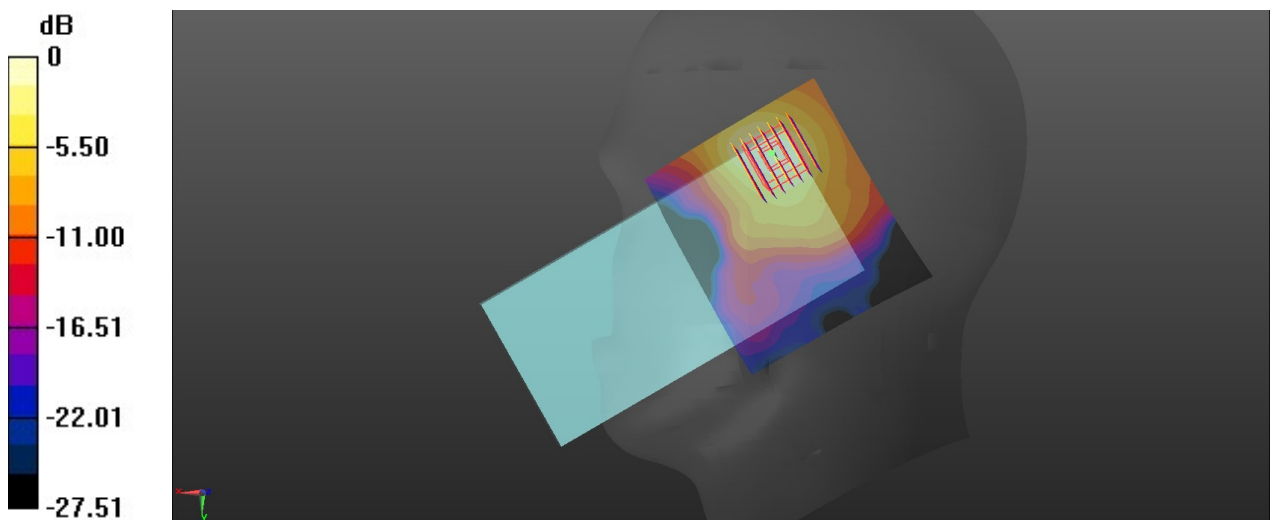
Ambient Temperature : 23.3 °C; Liquid Temperature : 22.6 °C

DASY5 Configuration:

- Probe: EX3DV4 - SN7475; ConvF(7.47, 7.47, 7.47); Calibrated: 2019.10.16
- Sensor-Surface: 1.4mm (Mechanical Surface Detection)
- Electronics: DAE4 Sn787; Calibrated: 2020.3.12
- Phantom: SAM1; Type: SAM; Serial: TP-1461
- Measurement SW: DASY52, Version 52.10 (4); SEMCAD X Version 14.6.14 (7483)

Area Scan (91x81x1): Interpolated grid: dx=1.200 mm, dy=1.200 mm
Maximum value of SAR (interpolated) = 0.440 W/kg

Zoom Scan (7x7x7)/Cube 0: Measurement grid: dx=5mm, dy=5mm, dz=5mm
Reference Value = 6.721 V/m; Power Drift = 0.08 dB
Peak SAR (extrapolated) = 0.601 W/kg
SAR(1 g) = 0.262 W/kg; SAR(10 g) = 0.126 W/kg
Maximum value of SAR (measured) = 0.450 W/kg



0 dB = 0.450 W/kg = -3.47 dBW/kg

11_WLAN2.4GHz_802.11b 1Mbps_Left Cheek_0mm_Ch11

Communication System: UID 0, 802.11b (0); Frequency: 2462 MHz;Duty Cycle: 1:1
 Medium: HSL_2450 Medium parameters used: $f = 2462$ MHz; $\sigma = 1.807$ S/m; $\epsilon_r = 40.897$; $\rho = 1000$ kg/m³

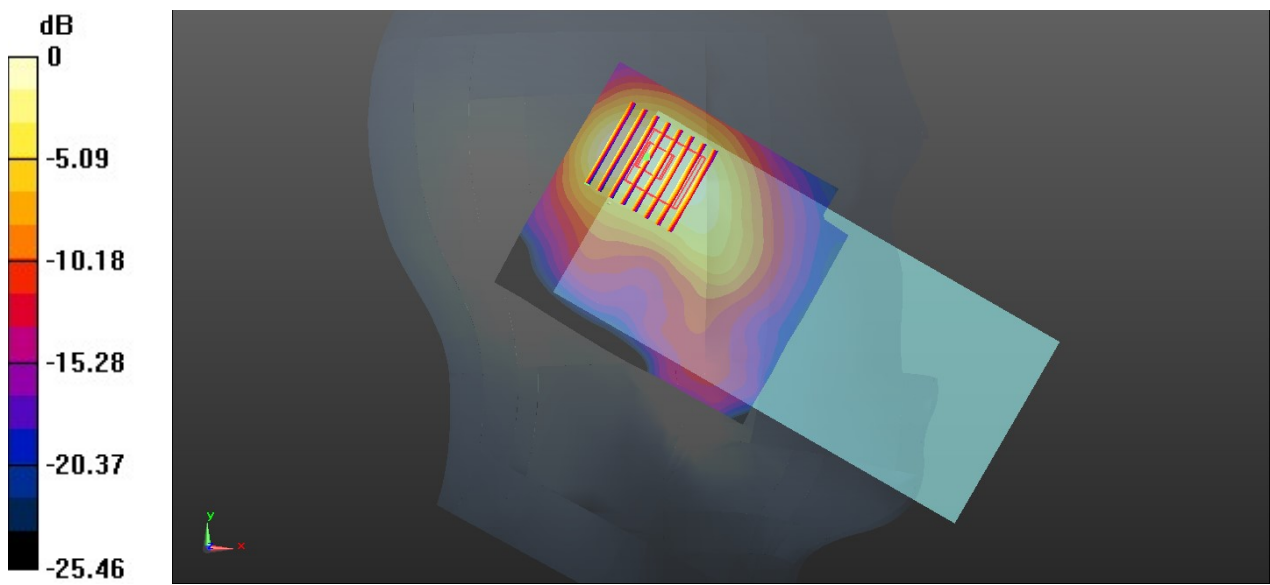
Ambient Temperature : 23.3 °C; Liquid Temperature : 22.9 °C

DASY5 Configuration:

- Probe: EX3DV4 - SN7475; ConvF(7.65, 7.65, 7.65); Calibrated: 2019.10.16
- Sensor-Surface: 1.4mm (Mechanical Surface Detection)
- Electronics: DAE4 Sn787; Calibrated: 2020.3.12
- Phantom: SAM1; Type: SAM; Serial: TP-1461
- Measurement SW: DASY52, Version 52.10 (4); SEMCAD X Version 14.6.14 (7483)

Area Scan (81x91x1): Interpolated grid: dx=1.200 mm, dy=1.200 mm
 Maximum value of SAR (interpolated) = 1.21 W/kg

Zoom Scan (8x8x7)/Cube 0: Measurement grid: dx=5mm, dy=5mm, dz=5mm
 Reference Value = 12.42 V/m; Power Drift = 0.06 dB
 Peak SAR (extrapolated) = 1.34 W/kg
SAR(1 g) = 0.792 W/kg; SAR(10 g) = 0.423 W/kg
 Maximum value of SAR (measured) = 0.975 W/kg



0 dB = 0.975 W/kg = -0.11 dBW/kg

12_Bluetooth_1Mbps_Left Cheek_0mm_Ch39

Communication System: UID 0, Bluetooth (0); Frequency: 2441 MHz; Duty Cycle: 1:1.304
Medium: HSL_2450 Medium parameters used: $f = 2441$ MHz; $\sigma = 1.782$ S/m; $\epsilon_r = 40.967$; $\rho = 1000$ kg/m³
Ambient Temperature : 23.3 °C; Liquid Temperature : 22.9 °C

DASY5 Configuration:

- Probe: EX3DV4 - SN7475; ConvF(7.65, 7.65, 7.65); Calibrated: 2019.10.16
- Sensor-Surface: 1.4mm (Mechanical Surface Detection)
- Electronics: DAE4 Sn787; Calibrated: 2020.3.12
- Phantom: SAM1; Type: SAM; Serial: TP-1461
- Measurement SW: DASY52, Version 52.10 (4); SEMCAD X Version 14.6.14 (7483)

Area Scan (91x91x1): Interpolated grid: dx=1.200 mm, dy=1.200 mm

Maximum value of SAR (interpolated) = 0.151 W/kg

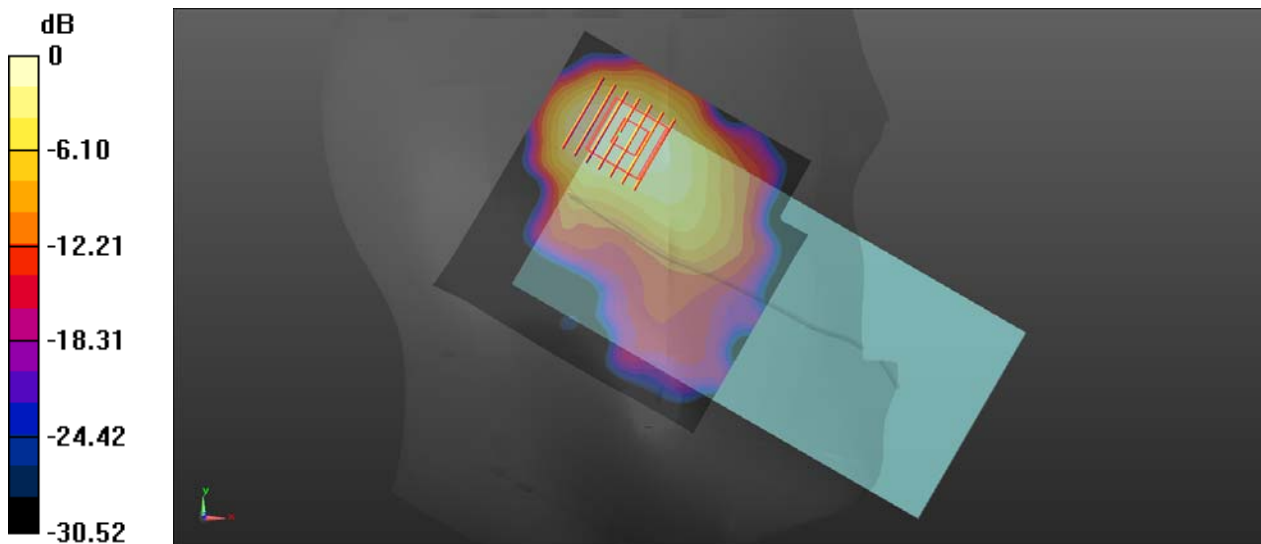
Zoom Scan (7x7x7)/Cube 0: Measurement grid: dx=5mm, dy=5mm, dz=5mm

Reference Value = 3.085 V/m; Power Drift = -0.06 dB

Peak SAR (extrapolated) = 0.291 W/kg

SAR(1 g) = 0.152 W/kg; SAR(10 g) = 0.075 W/kg

Maximum value of SAR (measured) = 0.235 W/kg



0 dB = 0.235 W/kg = -6.29 dBW/kg

13_WLAN5GHz_802.11a 6Mbps_Right Tilted_0mm_Ch56

Communication System: UID 0, 802.11a (0); Frequency: 5280 MHz; Duty Cycle: 1:1.018
Medium: HSL_5000 Medium parameters used: $f = 5280$ MHz; $\sigma = 4.922$ S/m; $\epsilon_r = 37.407$; $\rho = 1000$ kg/m³

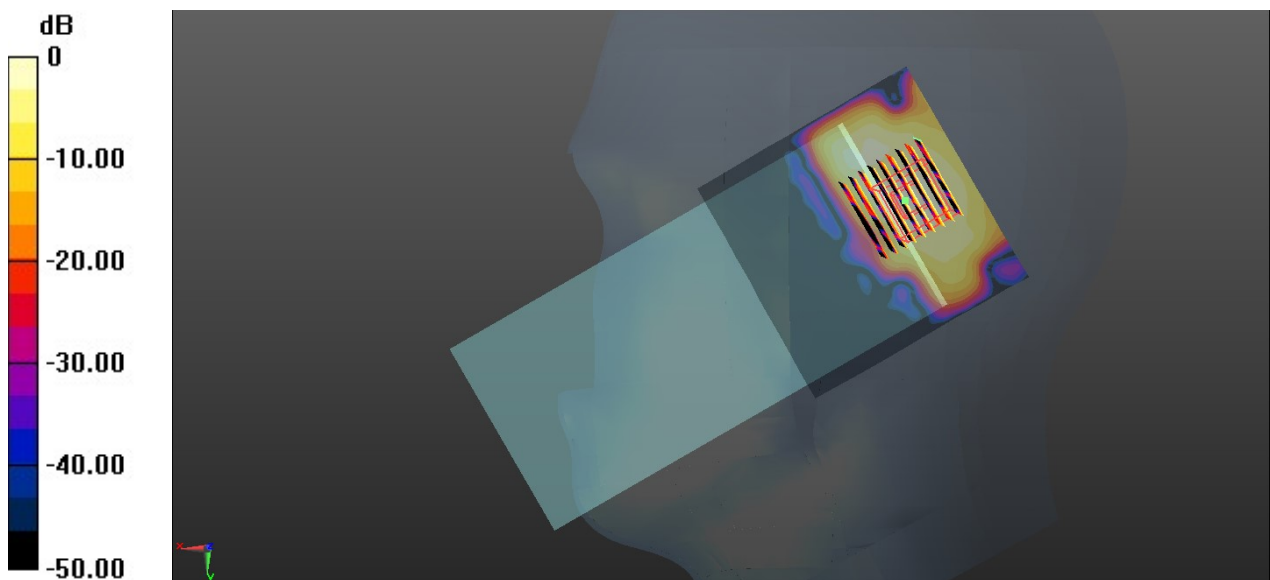
Ambient Temperature : 23.2 °C; Liquid Temperature : 22.7 °C

DASY5 Configuration:

- Probe: EX3DV4 - SN7592; ConvF(5.24, 5.24, 5.24); Calibrated: 2020.5.22
- Sensor-Surface: 1.4mm (Mechanical Surface Detection)
- Electronics: DAE4 Sn656; Calibrated: 2019.12.17
- Phantom: SAM2; Type: SAM; Serial: TP-1503
- Measurement SW: DASY52, Version 52.10 (4); SEMCAD X Version 14.6.14 (7483)

Area Scan (91x91x1): Interpolated grid: dx=1.000 mm, dy=1.000 mm
Maximum value of SAR (interpolated) = 0.408 W/kg

Zoom Scan (9x9x7)/Cube 0: Measurement grid: dx=4mm, dy=4mm, dz=1.4mm
Reference Value = 3.978 V/m; Power Drift = 0.05 dB
Peak SAR (extrapolated) = 1.34 W/kg
SAR(1 g) = 0.170 W/kg; SAR(10 g) = 0.054 W/kg
Maximum value of SAR (measured) = 0.413 W/kg



0 dB = 0.413 W/kg = -3.84 dBW/kg

14_WLAN5GHz_802.11a 6Mbps_Left Cheek_0mm_Ch144

Communication System: UID 0, 802.11a (0); Frequency: 5720 MHz; Duty Cycle: 1:1.018
Medium: HSL_5000 Medium parameters used: $f = 5720$ MHz; $\sigma = 5.381$ S/m; $\epsilon_r = 36.757$; $\rho = 1000$ kg/m³

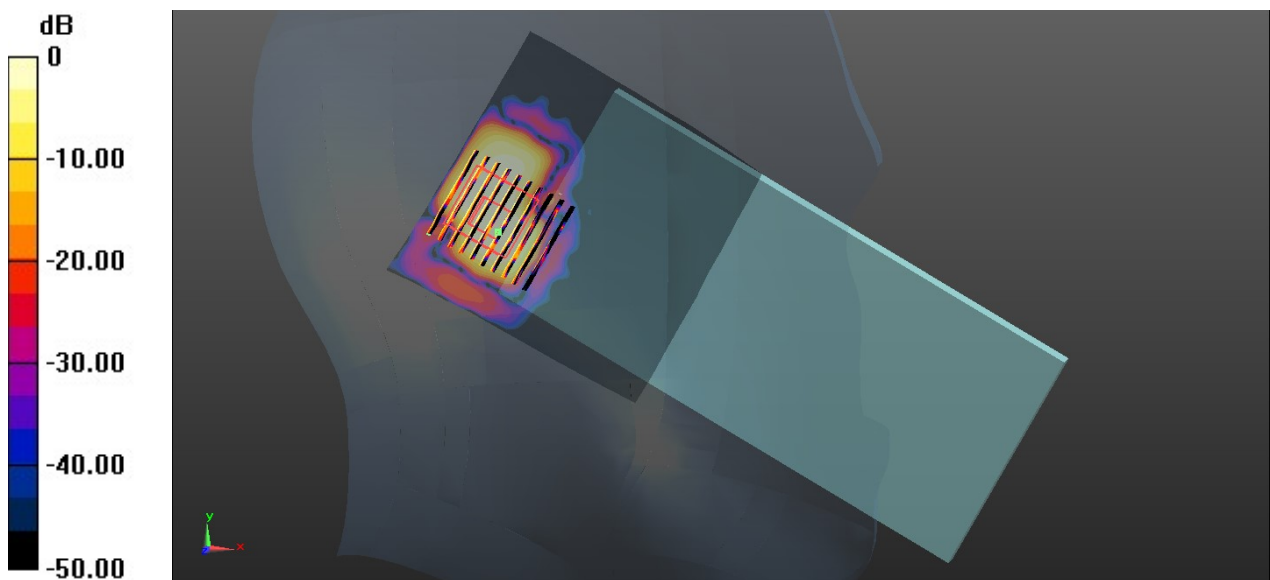
Ambient Temperature : 23.2 °C; Liquid Temperature : 22.9 °C

DASY5 Configuration:

- Probe: EX3DV4 - SN7592; ConvF(4.69, 4.69, 4.69); Calibrated: 2020.5.22
- Sensor-Surface: 1.4mm (Mechanical Surface Detection)
- Electronics: DAE4 Sn656; Calibrated: 2019.12.17
- Phantom: SAM2; Type: SAM; Serial: TP-1503
- Measurement SW: DASY52, Version 52.10 (4); SEMCAD X Version 14.6.14 (7483)

Area Scan (91x91x1): Interpolated grid: dx=1.000 mm, dy=1.000 mm
Maximum value of SAR (interpolated) = 0.200 W/kg

Zoom Scan (9x10x7)/Cube 0: Measurement grid: dx=4mm, dy=4mm, dz=1.4mm
Reference Value = 0.9650 V/m; Power Drift = 0.03 dB
Peak SAR (extrapolated) = 0.343 W/kg
SAR(1 g) = 0.070 W/kg; SAR(10 g) = 0.025 W/kg
Maximum value of SAR (measured) = 0.187 W/kg



0 dB = 0.187 W/kg = -7.28 dBW/kg

15_WLAN5GHz_802.11a 6Mbps_Right Cheek_0mm_Ch149

Communication System: UID 0, 802.11a (0); Frequency: 5745 MHz; Duty Cycle: 1:1.018
Medium: HSL_5000 Medium parameters used: $f = 5745$ MHz; $\sigma = 5.404$ S/m; $\epsilon_r = 36.726$; $\rho = 1000$ kg/m³

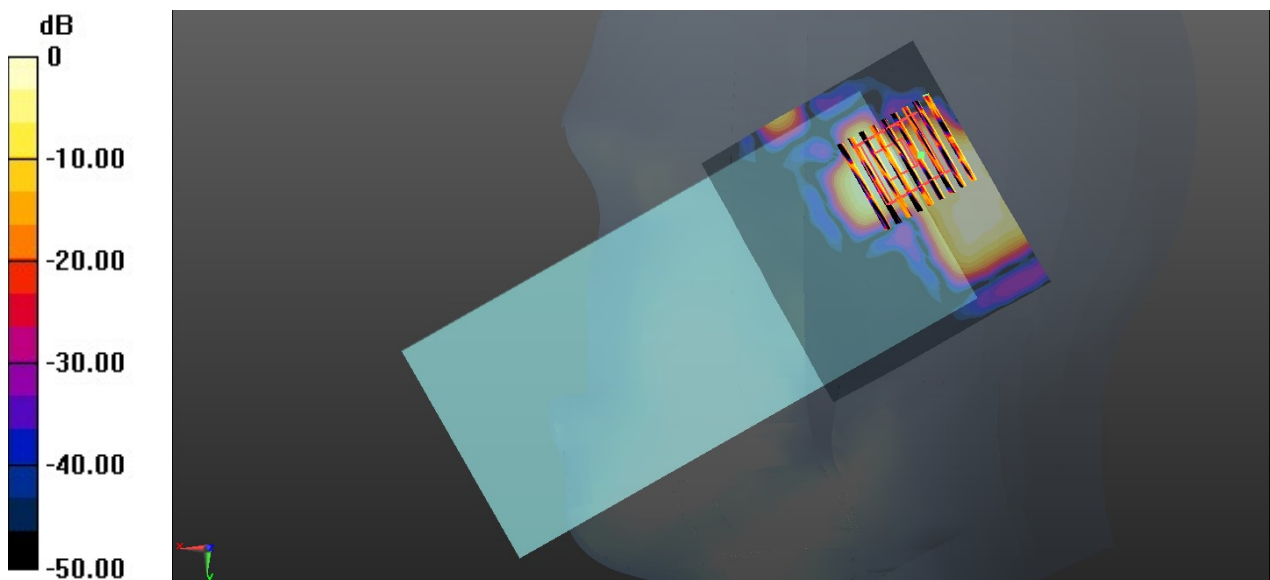
Ambient Temperature : 23.2 °C; Liquid Temperature : 22.9 °C

DASY5 Configuration:

- Probe: EX3DV4 - SN7592; ConvF(4.69, 4.69, 4.69); Calibrated: 2020.5.22
- Sensor-Surface: 1.4mm (Mechanical Surface Detection)
- Electronics: DAE4 Sn656; Calibrated: 2019.12.17
- Phantom: SAM2; Type: SAM; Serial: TP-1503
- Measurement SW: DASY52, Version 52.10 (4); SEMCAD X Version 14.6.14 (7483)

Area Scan (91x81x1): Interpolated grid: dx=1.000 mm, dy=1.000 mm
Maximum value of SAR (interpolated) = 0.239 W/kg

Zoom Scan (9x9x7)/Cube 0: Measurement grid: dx=4mm, dy=4mm, dz=1.4mm
Reference Value = 1.781 V/m; Power Drift = -0.06 dB
Peak SAR (extrapolated) = 0.349 W/kg
SAR(1 g) = 0.062 W/kg; SAR(10 g) = 0.019 W/kg
Maximum value of SAR (measured) = 0.185 W/kg



0 dB = 0.185 W/kg = -7.33 dBW/kg

16_GSM850_GPRS 3Tx slots_Back_5mm_Ch128

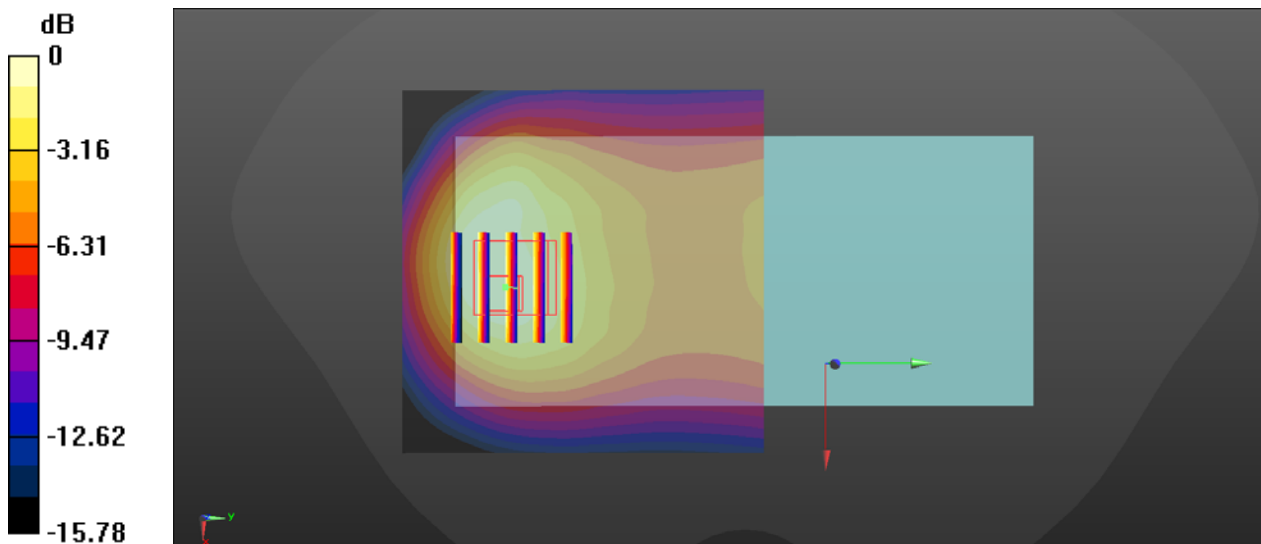
Communication System: UID 0, GPRS 3TX (0); Frequency: 824.2 MHz;Duty Cycle: 1:2.77
Medium: HSL_850 Medium parameters used: $f = 824.2$ MHz; $\sigma = 0.94$ S/m; $\epsilon_r = 41.276$; $\rho = 1000$ kg/m³
Ambient Temperature : 23.2 °C; Liquid Temperature : 22.8 °C

DASY5 Configuration:

- Probe: EX3DV4 - SN7475; ConvF(9.93, 9.93, 9.93); Calibrated: 2019.10.16
- Sensor-Surface: 3mm (Mechanical Surface Detection)
- Electronics: DAE4 Sn787; Calibrated: 2020.3.12
- Phantom: SAM1; Type: SAM; Serial: TP-1461
- Measurement SW: DASY52, Version 52.10 (4); SEMCAD X Version 14.6.14 (7483)

Area Scan (71x71x1): Interpolated grid: dx=1.500 mm, dy=1.500 mm
Maximum value of SAR (interpolated) = 1.76 W/kg

Zoom Scan (5x5x7)/Cube 0: Measurement grid: dx=8mm, dy=8mm, dz=5mm
Reference Value = 23.83 V/m; Power Drift = 0.03 dB
Peak SAR (extrapolated) = 2.70 W/kg
SAR(1 g) = 0.933 W/kg; SAR(10 g) = 0.542 W/kg
Maximum value of SAR (measured) = 1.63 W/kg



0 dB = 1.63 W/kg = 2.12 dBW/kg

17_GSM1900_GPRS 3Tx slots_Back_5mm_Ch810

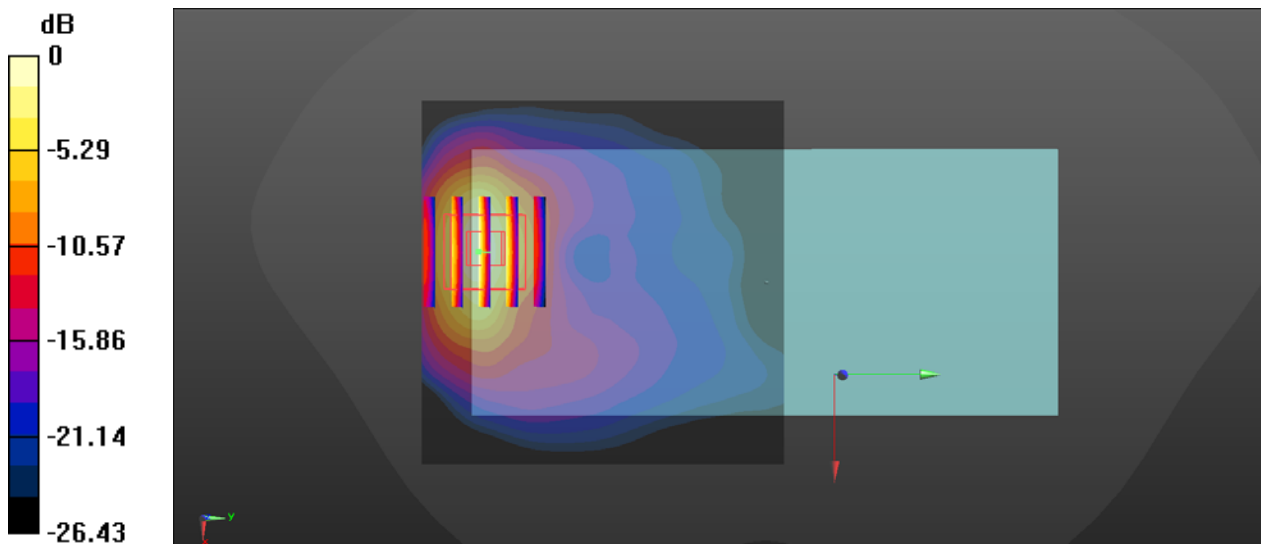
Communication System: UID 0, GPRS 3TX (0); Frequency: 1909.8 MHz; Duty Cycle: 1:2.77
Medium: HSL_1900 Medium parameters used: $f = 1909.8$ MHz; $\sigma = 1.447$ S/m; $\epsilon_r = 40.05$; $\rho = 1000$ kg/m³
Ambient Temperature : 23.1 °C; Liquid Temperature : 22.7 °C

DASY5 Configuration:

- Probe: EX3DV4 - SN7475; ConvF(8.36, 8.36, 8.36); Calibrated: 2019.10.16
- Sensor-Surface: 1.4mm (Mechanical Surface Detection)
- Electronics: DAE4 Sn787; Calibrated: 2020.3.12
- Phantom: SAM1; Type: SAM; Serial: TP-1461
- Measurement SW: DASY52, Version 52.10 (4); SEMCAD X Version 14.6.14 (7483)

Area Scan (71x71x1): Interpolated grid: dx=1.500 mm, dy=1.500 mm
Maximum value of SAR (interpolated) = 1.07 W/kg

Zoom Scan (5x5x5)/Cube 0: Measurement grid: dx=8mm, dy=8mm, dz=5mm
Reference Value = 1.790 V/m; Power Drift = 0.12 dB
Peak SAR (extrapolated) = 2.12 W/kg
SAR(1 g) = 1.02 W/kg; SAR(10 g) = 0.451 W/kg
Maximum value of SAR (measured) = 1.29 W/kg



0 dB = 1.29 W/kg = 1.11 dBW/kg

18_WCDMA II_RMC 12.2Kbps_Back_5mm_Ch9262

Communication System: UID 0, WCDMA (0); Frequency: 1852.4 MHz; Duty Cycle: 1:1
 Medium: HSL_1900 Medium parameters used: $f = 1852.4$ MHz; $\sigma = 1.432$ S/m; $\epsilon_r = 40.076$; $\rho = 1000$ kg/m³

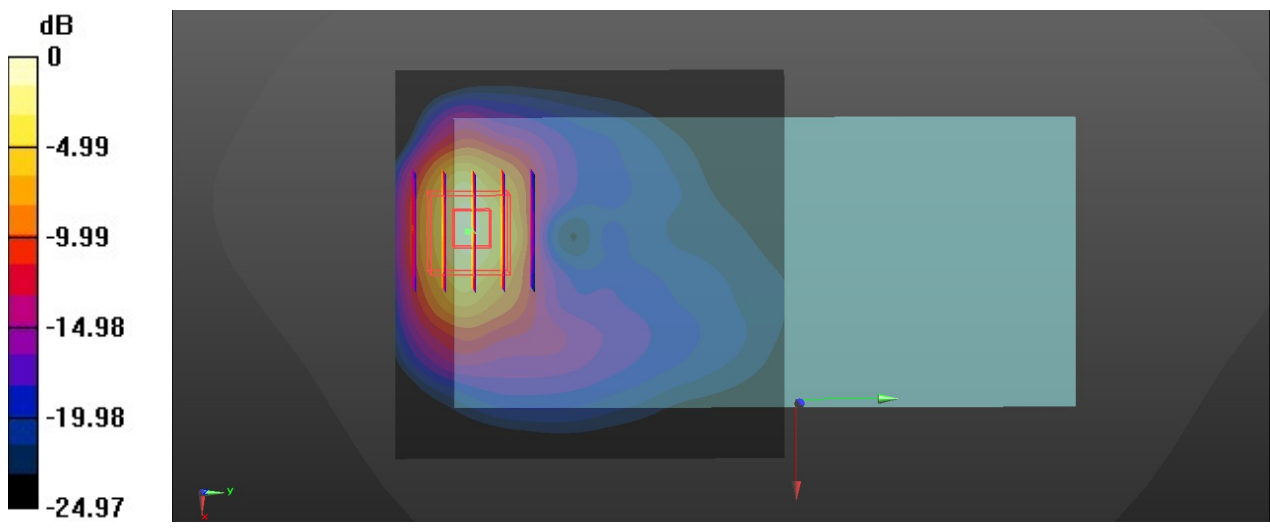
Ambient Temperature : 23.1 °C; Liquid Temperature : 22.7 °C

DASY5 Configuration:

- Probe: EX3DV4 - SN7475; ConvF(8.36, 8.36, 8.36); Calibrated: 2019.10.16
- Sensor-Surface: 1.4mm (Mechanical Surface Detection)
- Electronics: DAE4 Sn787; Calibrated: 2020.3.12
- Phantom: SAM1; Type: SAM; Serial: 1461
- Measurement SW: DASY52, Version 52.10 (4); SEMCAD X Version 14.6.14 (7483)

Area Scan (71x71x1): Interpolated grid: dx=1.500 mm, dy=1.500 mm
 Maximum value of SAR (interpolated) = 1.27 W/kg

Zoom Scan (5x5x7)/Cube 0: Measurement grid: dx=8mm, dy=8mm, dz=5mm
 Reference Value = 2.610 V/m; Power Drift = 0.18 dB
 Peak SAR (extrapolated) = 2.65 W/kg
SAR(1 g) = 1.23 W/kg; SAR(10 g) = 0.536 W/kg
 Maximum value of SAR (measured) = 2.13 W/kg



0 dB = 2.13 W/kg = 3.28 dBW/kg