

31_LTE Band 13_10M_QPSK_1RB_0Offset_Back_5mm_Close_Ant 2_Ch23230

Communication System: UID 0, LTE FDD (0); Frequency: 782 MHz; Duty Cycle: 1:1
 Medium: HSL_750 Medium parameters used: $f = 782 \text{ MHz}$; $\sigma = 0.933 \text{ S/m}$; $\epsilon_r = 41.991$; $\rho = 1000 \text{ kg/m}^3$

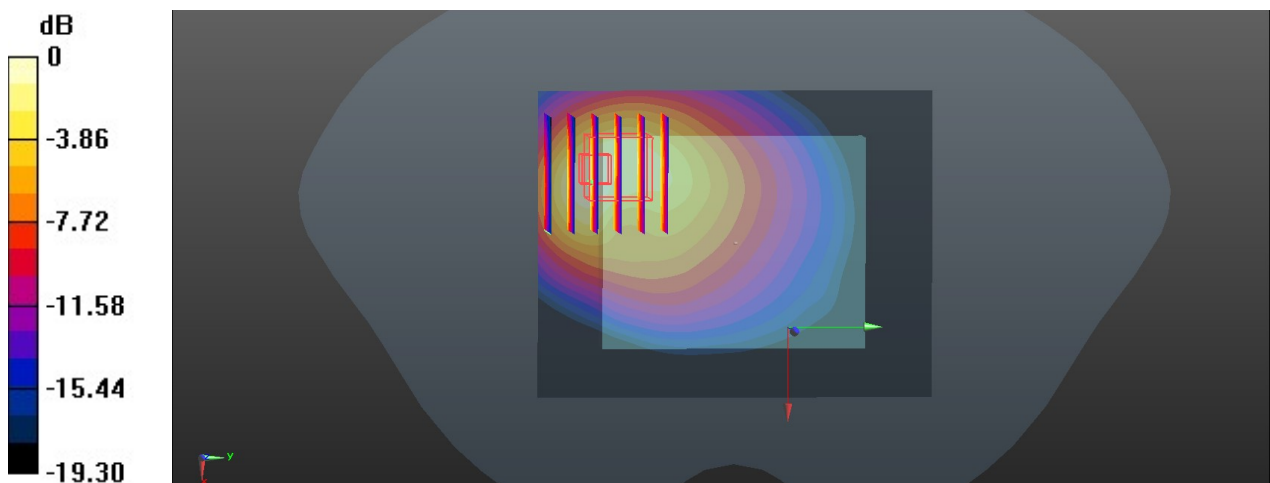
Ambient Temperature : 23.3 °C; Liquid Temperature : 22.6 °C

DASY5 Configuration:

- Probe: EX3DV4 - SN3843; ConvF(9.37, 9.37, 9.37); Calibrated: 2019.9.26
- Sensor-Surface: 1.4mm (Mechanical Surface Detection)
- Electronics: DAE4 Sn1358; Calibrated: 2020.4.28
- Phantom: SAM2; Type: SAM; Serial: TP-1503
- Measurement SW: DASY52, Version 52.10 (4); SEMCAD X Version 14.6.14 (7483)

Area Scan (71x91x1): Interpolated grid: $dx=1.500 \text{ mm}$, $dy=1.500 \text{ mm}$
 Maximum value of SAR (interpolated) = 1.12 W/kg

Zoom Scan (6x6x7)/Cube 0: Measurement grid: $dx=8\text{mm}$, $dy=8\text{mm}$, $dz=5\text{mm}$
 Reference Value = 13.21 V/m; Power Drift = 0.01 dB
 Peak SAR (extrapolated) = 1.47 W/kg
SAR(1 g) = 0.566 W/kg; SAR(10 g) = 0.293 W/kg
 Maximum value of SAR (measured) = 1.02 W/kg



0 dB = 1.02 W/kg = 0.09 dBW/kg

32_LTE Band 26_15M_QPSK_1RB_0offset_Back_5mm_Ant 1_Close_Ch26865

Communication System: UID 0, LTE; Frequency: 831.5 MHz; Duty Cycle: 1:1

Medium: HSL_850 Medium parameters used: $f = 831.5$ MHz; $\sigma = 0.941$ S/m; $\epsilon_r = 41.105$; $\rho = 1000$ kg/m³

Ambient Temperature : 23.3 °C; Liquid Temperature : 22.9 °C

DASY5 Configuration:

- Probe: EX3DV4 - SN3843; ConvF(9.07, 9.07, 9.07); Calibrated: 2019.9.26
- Sensor-Surface: 1.4mm (Mechanical Surface Detection)
- Electronics: DAE4 Sn1358; Calibrated: 2020.4.28
- Phantom: SAM2; Type: SAM; Serial: TP-1503
- Measurement SW: DASY52, Version 52.10 (4); SEMCAD X Version 14.6.14 (7483)

Area Scan (71x71x1): Interpolated grid: dx=1.500 mm, dy=1.500 mm

Maximum value of SAR (interpolated) = 0.841 W/kg

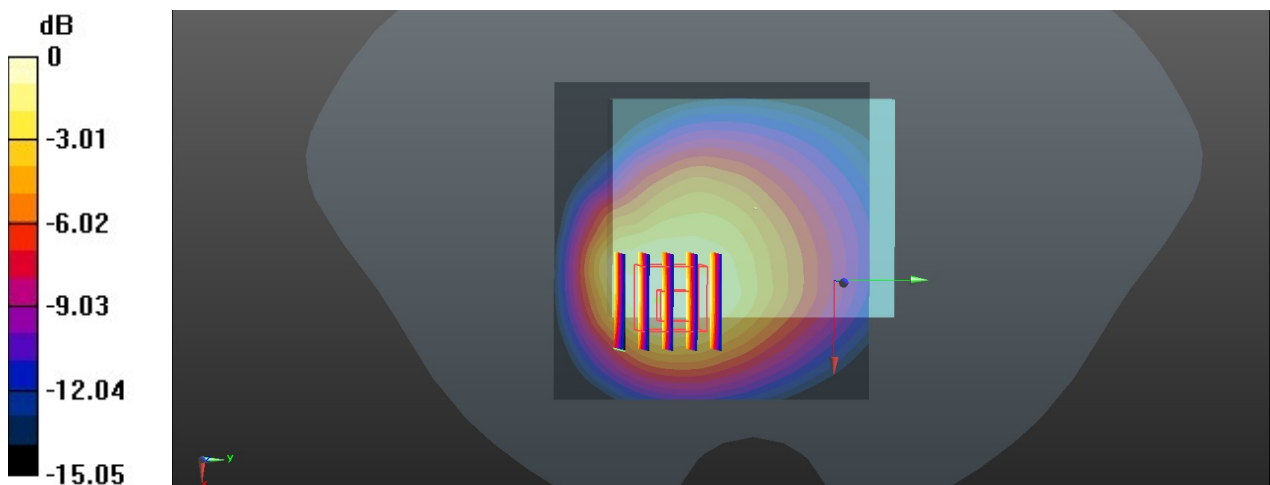
Zoom Scan (5x5x7)/Cube 0: Measurement grid: dx=8mm, dy=8mm, dz=5mm

Reference Value = 29.47 V/m; Power Drift = -0.09 dB

Peak SAR (extrapolated) = 1.15 W/kg

SAR(1 g) = 0.636 W/kg; SAR(10 g) = 0.367 W/kg

Maximum value of SAR (measured) = 0.790 W/kg



0 dB = 2.04 W/kg = 3.10 dBW/kg

33_LTE Band 66_20M_QPSK_1RB_0offset_Bottom Side_5mm_Ant 1_Open_Ch132572

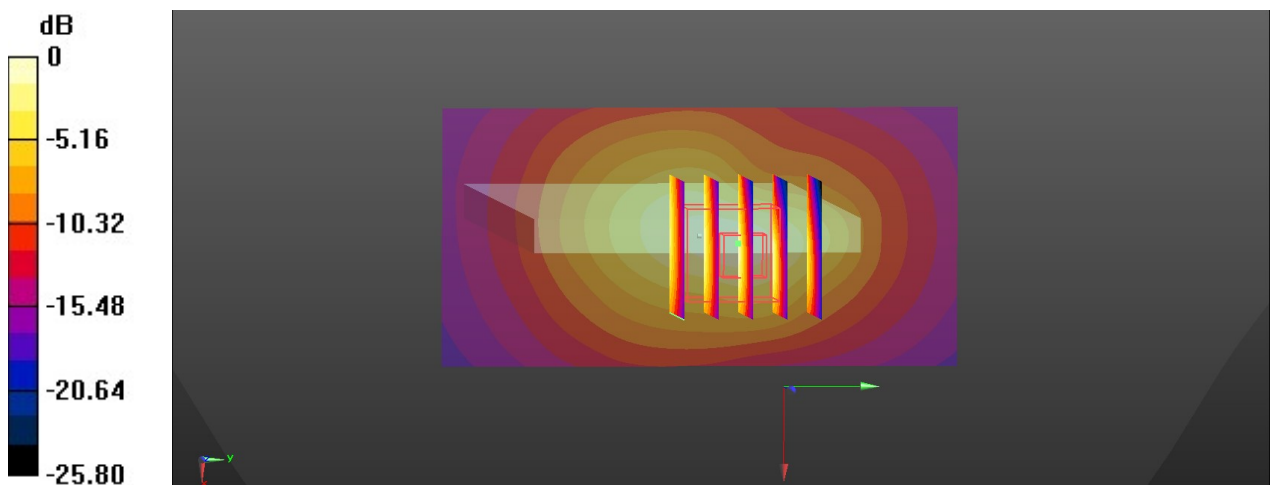
Communication System: UID 0, LTE-FDD (0); Frequency: 1770 MHz; Duty Cycle: 1:1
 Medium: HSL_1750 Medium parameters used: $f = 1770$ MHz; $\sigma = 1.371$ S/m; $\epsilon_r = 40.307$; $\rho = 1000$ kg/m³
 Ambient Temperature : 23.4 °C; Liquid Temperature : 22.7 °C

DASY5 Configuration:

- Probe: EX3DV4 - SN3843; ConvF(7.95, 7.95, 7.95); Calibrated: 2019.9.26
- Sensor-Surface: 1.4mm (Mechanical Surface Detection)
- Electronics: DAE4 Sn1358; Calibrated: 2020.4.28
- Phantom: SAM2; Type: SAM; Serial: TP-1503
- Measurement SW: DASY52, Version 52.10 (4); SEMCAD X Version 14.6.14 (7483)

Area Scan (41x81x1): Interpolated grid: dx=1.500 mm, dy=1.500 mm
 Maximum value of SAR (interpolated) = 0.734 W/kg

Zoom Scan (5x5x5)/Cube 0: Measurement grid: dx=8mm, dy=8mm, dz=5mm
 Reference Value = 22.73 V/m; Power Drift = 0.07 dB
 Peak SAR (extrapolated) = 1.37 W/kg
SAR(1 g) = 0.679 W/kg; SAR(10 g) = 0.324 W/kg
 Maximum value of SAR (measured) = 0.876 W/kg



0 dB = 0.876 W/kg = -0.57 dBW/kg

34_LTE Band 71_20M_QPSK_1RB_0Offset_Bottom Side_5mm_Ch133322

Communication System: UID 0, LTE FDD (0); Frequency: 683 MHz; Duty Cycle: 1:1
 Medium: HSL_750 Medium parameters used: $f = 683 \text{ MHz}$; $\sigma = 0.835 \text{ S/m}$; $\epsilon_r = 42.388$; $\rho = 1000 \text{ kg/m}^3$

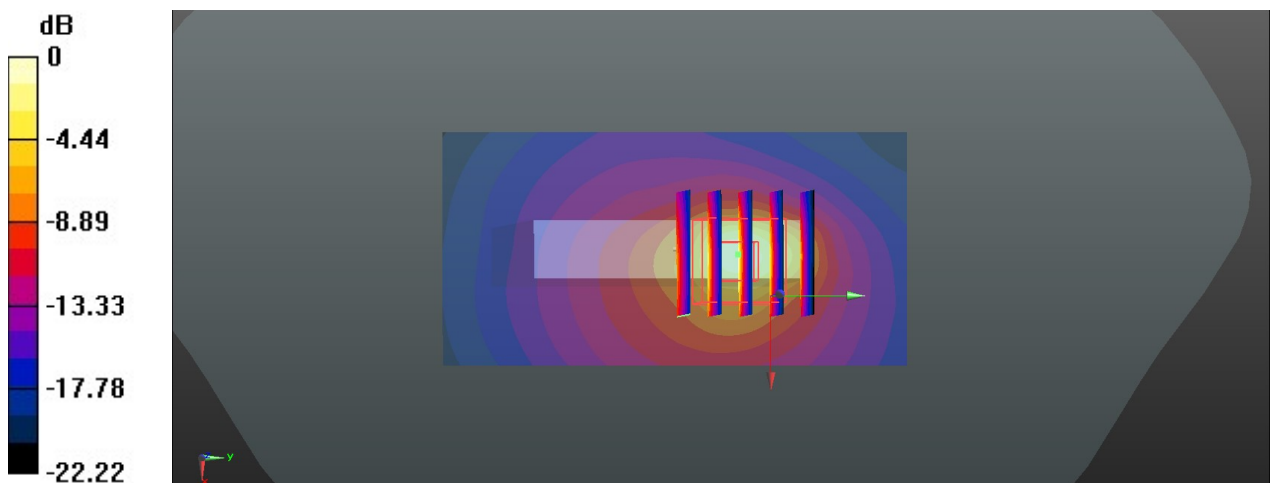
Ambient Temperature : 23.1 °C; Liquid Temperature : 22.6 °C

DASY5 Configuration:

- Probe: EX3DV4 - SN7592; ConvF(10.31, 10.31, 10.31); Calibrated: 2020.5.22
- Sensor-Surface: 1.4mm (Mechanical Surface Detection)
- Electronics: DAE4 Sn1338; Calibrated: 2019.11.20
- Phantom: SAM1; Type: SAM; Serial: TP-1753
- Measurement SW: DASY52, Version 52.10 (4); SEMCAD X Version 14.6.14 (7483)

Area Scan (41x81x1): Interpolated grid: $dx=1.500 \text{ mm}$, $dy=1.500 \text{ mm}$
 Maximum value of SAR (interpolated) = 0.973 W/kg

Zoom Scan (5x5x7)/Cube 0: Measurement grid: $dx=8\text{mm}$, $dy=8\text{mm}$, $dz=5\text{mm}$
 Reference Value = 14.33 V/m; Power Drift = -0.01 dB
 Peak SAR (extrapolated) = 1.85 W/kg
SAR(1 g) = 0.432 W/kg; SAR(10 g) = 0.167 W/kg
 Maximum value of SAR (measured) = 0.997 W/kg



0 dB = 0.997 W/kg = -0.01 dBW/kg

35_LTE Band 41_Ant 2_20M_QPSK_1RB_0Offset_Bottom Side_5mm_Ch40620

Communication System: UID 0, LTE TDD (0); Frequency: 2593 MHz; Duty Cycle: 1:1.59
 Medium: HSL_2600 Medium parameters used: $f = 2593$ MHz; $\sigma = 1.973$ S/m; $\epsilon_r = 39.054$; $\rho = 1000$ kg/m³

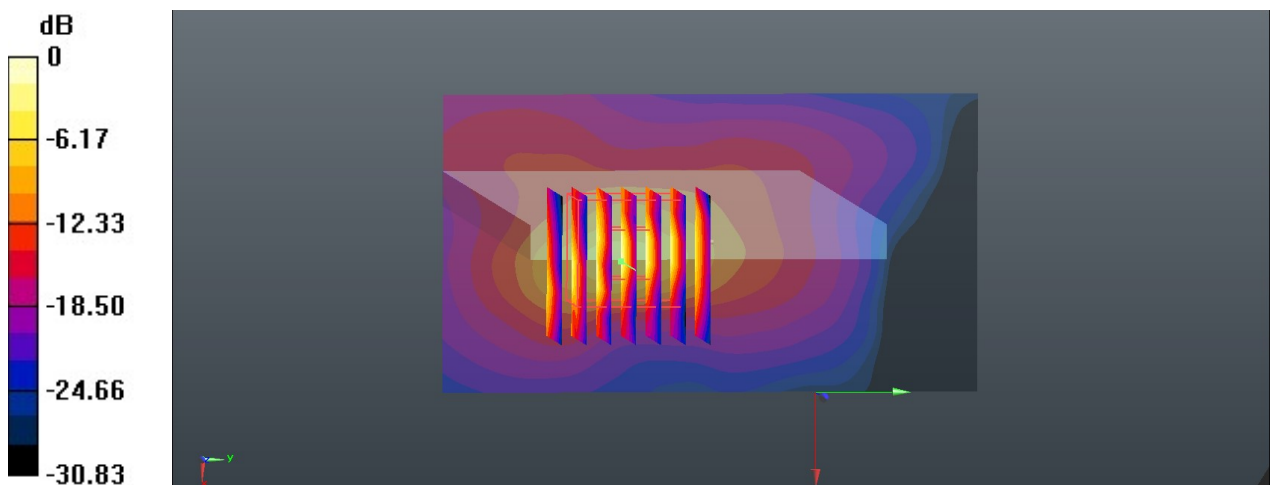
Ambient Temperature : 23.2 °C; Liquid Temperature : 22.7 °C

DASY5 Configuration:

- Probe: EX3DV4 - SN3843; ConvF(6.90, 6.90, 6.90); Calibrated: 2019.9.26
- Sensor-Surface: 1.4mm (Mechanical Surface Detection)
- Electronics: DAE4 Sn1358; Calibrated: 2020.4.28
- Phantom: SAM2; Type: SAM; Serial: TP-1503
- Measurement SW: DASY52, Version 52.10 (4); SEMCAD X Version 14.6.14 (7483)

Area Scan (51x91x1): Interpolated grid: dx=1.200 mm, dy=1.200 mm
 Maximum value of SAR (interpolated) = 0.806 W/kg

Zoom Scan (7x7x7)/Cube 0: Measurement grid: dx=5mm, dy=5mm, dz=5mm
 Reference Value = 12.62 V/m; Power Drift = 0.04 dB
 Peak SAR (extrapolated) = 4.45 W/kg
SAR(1 g) = 0.607 W/kg; SAR(10 g) = 0.195 W/kg
 Maximum value of SAR (measured) = 1.24 W/kg



0 dB = 1.24 W/kg = 0.93 dBW/kg

36_FR1 n5_20M_BPSK_1RB_1Offset_Back_5mm_Ant1_Close_Ch167300

Communication System: UID 0, 5G NR (0); Frequency: 836.5 MHz; Duty Cycle: 1:1
 Medium: HSL_850 Medium parameters used: $f = 836.5$ MHz; $\sigma = 0.952$ S/m; $\epsilon_r = 41.813$; $\rho = 1000$ kg/m³

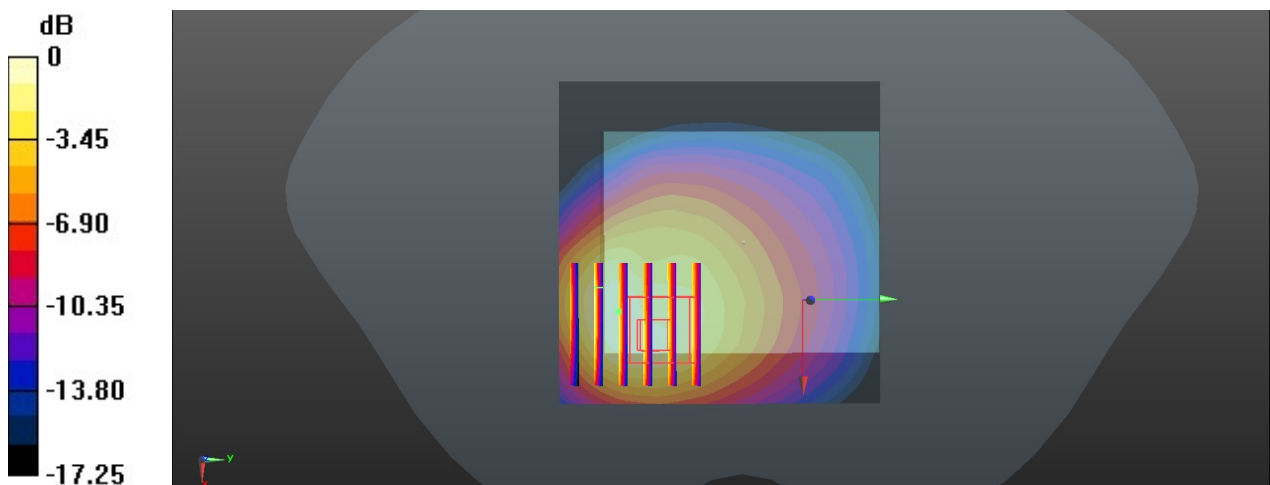
Ambient Temperature : 23.3 °C; Liquid Temperature : 22.9 °C

DASY5 Configuration:

- Probe: EX3DV4 - SN3843; ConvF(9.07, 9.07, 9.07); Calibrated: 2019.9.26
- Sensor-Surface: 1.4mm (Mechanical Surface Detection)
- Electronics: DAE4 Sn1358; Calibrated: 2020.4.28
- Phantom: SAM2; Type: SAM; Serial: TP-1503
- Measurement SW: DASY52, Version 52.10 (4); SEMCAD X Version 14.6.14 (7483)

Area Scan (71x71x1): Interpolated grid: dx=1.500 mm, dy=1.500 mm
 Maximum value of SAR (interpolated) = 1.13 W/kg

Zoom Scan (6x6x7)/Cube 0: Measurement grid: dx=8mm, dy=8mm, dz=5mm
 Reference Value = 18.00 V/m; Power Drift = -0.04 dB
 Peak SAR (extrapolated) = 1.59 W/kg
SAR(1 g) = 0.662 W/kg; SAR(10 g) = 0.393 W/kg
 Maximum value of SAR (measured) = 1.15 W/kg



0 dB = 1.15 W/kg = 0.61 dBW/kg

37_FR1 n41_100M_BPSK_1RB_1Offset_Bottom Side_5mm_Open_Ch518598

Communication System: UID 0, 5G NR (0); Frequency: 2592.99 MHz; Duty Cycle: 1:1
Medium: HSL_2600 Medium parameters used: $f = 2593$ MHz; $\sigma = 2.027$ S/m; $\epsilon_r = 38.092$; $\rho = 1000$ kg/m³

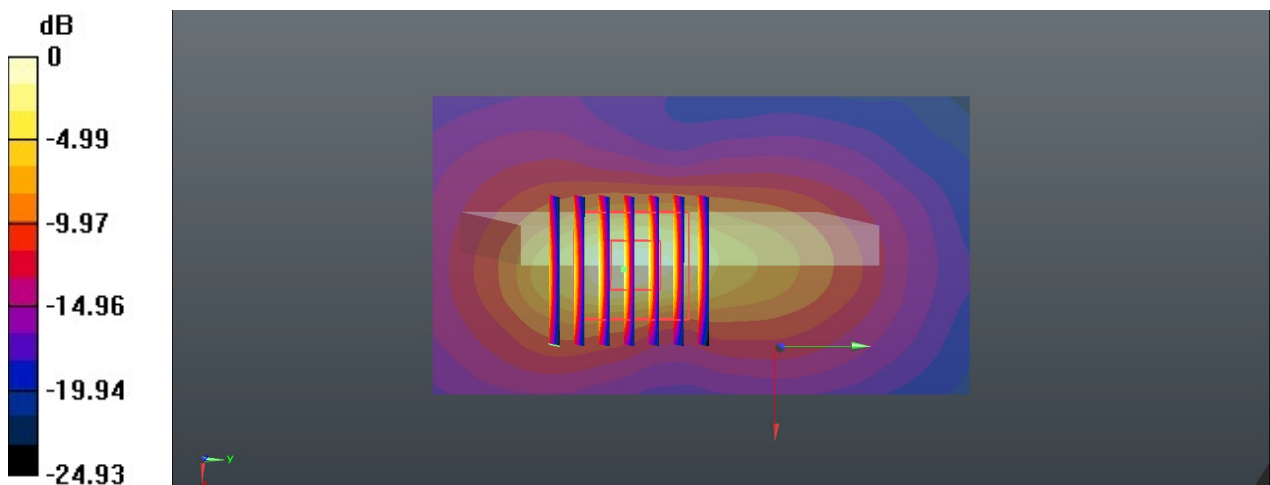
Ambient Temperature : 23.3 °C; Liquid Temperature : 22.8 °C

DASY5 Configuration:

- Probe: EX3DV4 - SN7592; ConvF(7.31, 7.31, 7.31); Calibrated: 2020.5.22
- Sensor-Surface: 1.4mm (Mechanical Surface Detection)
- Electronics: DAE4 Sn1338; Calibrated: 2019.11.20
- Phantom: SAM1; Type: SAM; Serial: TP-1753
- Measurement SW: DASY52, Version 52.10 (4); SEMCAD X Version 14.6.14 (7483)

Area Scan (51x91x1): Interpolated grid: dx=1.200 mm, dy=1.200 mm
Maximum value of SAR (interpolated) = 1.40 W/kg

Zoom Scan (7x7x7)/Cube 0: Measurement grid: dx=5mm, dy=5mm, dz=5mm
Reference Value = 17.79 V/m; Power Drift = -0.01 dB
Peak SAR (extrapolated) = 1.88 W/kg
SAR(1 g) = 0.792 W/kg; SAR(10 g) = 0.312 W/kg
Maximum value of SAR (measured) = 1.46 W/kg



0 dB = 1.46 W/kg = 1.64 dBW/kg

38_WLAN2.4GHz_802.11b 1Mbps_Back_5mm_Ant3+4_Close_Ch11

Communication System: UID 0, 802.11b (0); Frequency: 2462 MHz; Duty Cycle: 1:1
Medium: HSL_2450 Medium parameters used: $f = 2462$ MHz; $\sigma = 1.868$ S/m; $\epsilon_r = 39.113$; $\rho = 1000$ kg/m³

Ambient Temperature : 23.3 °C; Liquid Temperature : 22.7 °C

DASY5 Configuration:

- Probe: EX3DV4 - SN7592; ConvF(7.57, 7.57, 7.57); Calibrated: 2020.5.22
- Sensor-Surface: 1.4mm (Mechanical Surface Detection)
- Electronics: DAE4 Sn1338; Calibrated: 2019.11.20
- Phantom: SAM1; Type: SAM; Serial: TP-1753
- Measurement SW: DASY52, Version 52.10 (4); SEMCAD X Version 14.6.14 (7483)

Area Scan (91x101x1): Interpolated grid: dx=1.200 mm, dy=1.200 mm
Maximum value of SAR (interpolated) = 0.165 W/kg

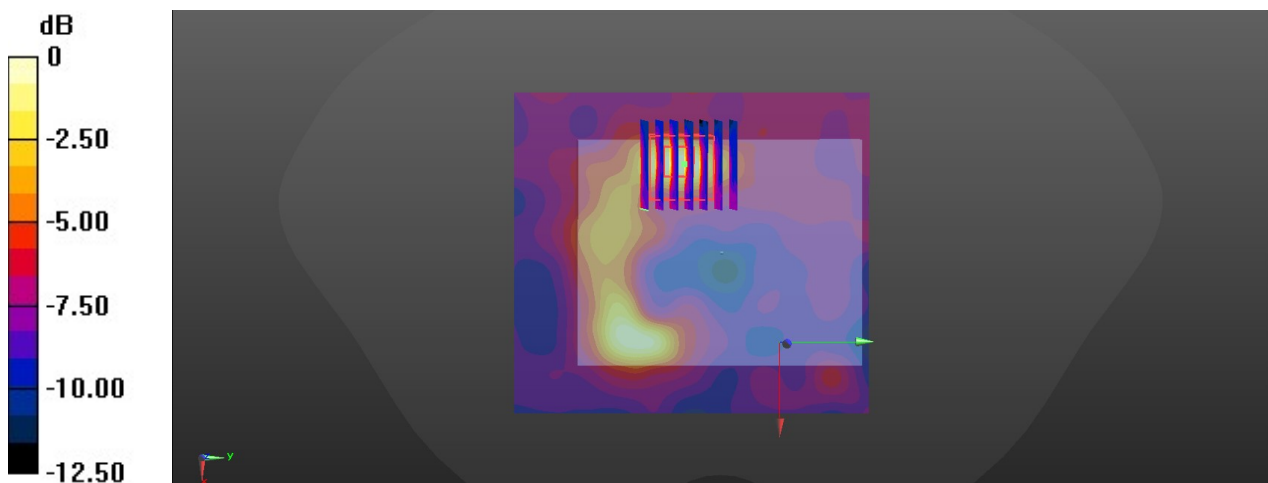
Zoom Scan (7x7x7)/Cube 0: Measurement grid: dx=5mm, dy=5mm, dz=5mm

Reference Value = 3.041 V/m; Power Drift = -0.07 dB

Peak SAR (extrapolated) = 0.191 W/kg

SAR(1 g) = 0.137 W/kg; SAR(10 g) = 0.063 W/kg

Maximum value of SAR (measured) = 0.262 W/kg



0 dB = 0.262 W/kg = -5.82 dBW/kg

39_Bluetooth_DH5 1Mbps_Back_5mm_Open_Ch78

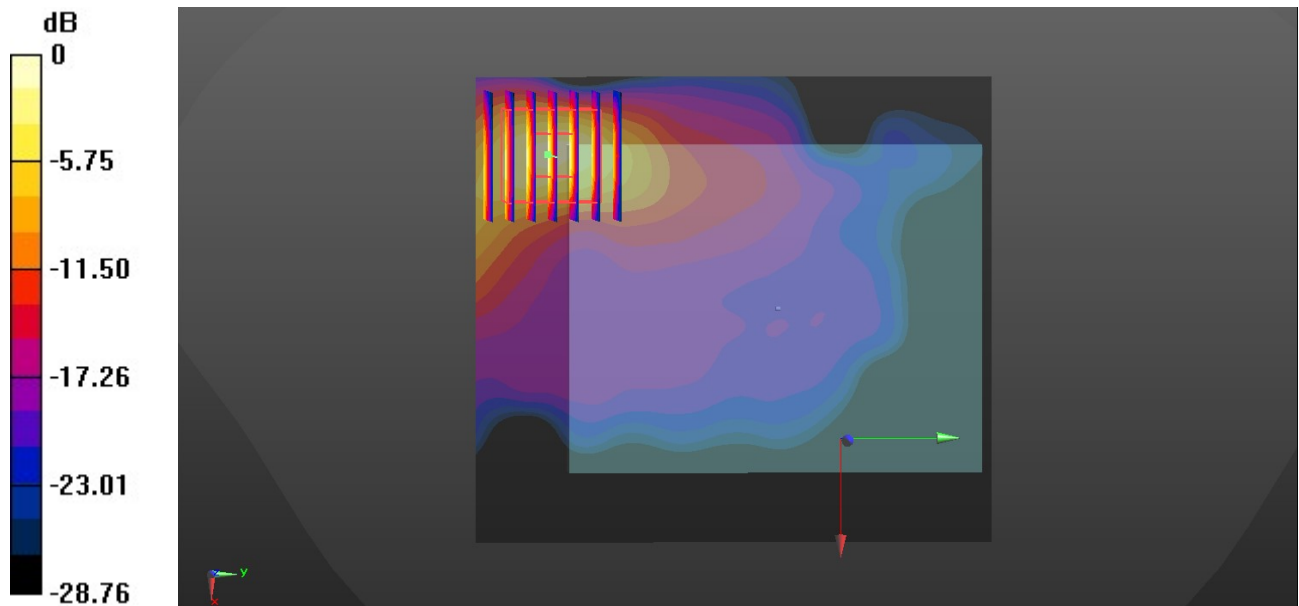
Communication System: UID 0, Bluetooth (0); Frequency: 2480 MHz; Duty Cycle: 1:1.297
Medium: HSL_2450 Medium parameters used: $f = 2480$ MHz; $\sigma = 1.884$ S/m; $\epsilon_r = 39.135$; $\rho = 1000$ kg/m³
Ambient Temperature : 23.3 °C; Liquid Temperature : 22.7 °C

DASY5 Configuration:

- Probe: EX3DV4 - SN7592; ConvF(7.57, 7.57, 7.57); Calibrated: 2020.5.22
- Sensor-Surface: 1.4mm (Mechanical Surface Detection)
- Electronics: DAE4 Sn1338; Calibrated: 2019.11.20
- Phantom: SAM1; Type: SAM; Serial: TP-1753
- Measurement SW: DASY52, Version 52.10 (4); SEMCAD X Version 14.6.14 (7483)

Area Scan (91x101x1): Interpolated grid: dx=1.200 mm, dy=1.200 mm
Maximum value of SAR (interpolated) = 1.09 W/kg

Zoom Scan (7x7x7)/Cube 0: Measurement grid: dx=5mm, dy=5mm, dz=5mm
Reference Value = 3.116 V/m; Power Drift = -0.14 dB
Peak SAR (extrapolated) = 1.85 W/kg
SAR(1 g) = 0.76 W/kg; SAR(10 g) = 0.268 W/kg
Maximum value of SAR (measured) = 1.38 W/kg



0 dB = 1.38 W/kg = 1.40 dBW/kg

40_WLAN5GHz_802.11ac-VHT80 MCS0_Back_5mm_Ant3+4_Open_Ch42

Communication System: UID 0, WLAN5G (0); Frequency: 5210 MHz; Duty Cycle: 1:1.089
Medium: HSL_5000 Medium parameters used: $f = 5210$ MHz; $\sigma = 4.492$ S/m; $\epsilon_r = 36.418$; $\rho = 1000$ kg/m³

Ambient Temperature : 23.2 °C; Liquid Temperature : 22.6 °C

DASY5 Configuration:

- Probe: EX3DV4 - SN3843; ConvF(4.74, 4.74, 4.74); Calibrated: 2019.9.26
- Sensor-Surface: 1.4mm (Mechanical Surface Detection)
- Electronics: DAE4 Sn1358; Calibrated: 2020.4.28
- Phantom: SAM2; Type: SAM; Serial: TP-1503
- Measurement SW: DASY52, Version 52.10 (4); SEMCAD X Version 14.6.14 (7483)

Area Scan (111x111x1): Interpolated grid: dx=1.000 mm, dy=1.000 mm
Maximum value of SAR (interpolated) = 0.171 W/kg

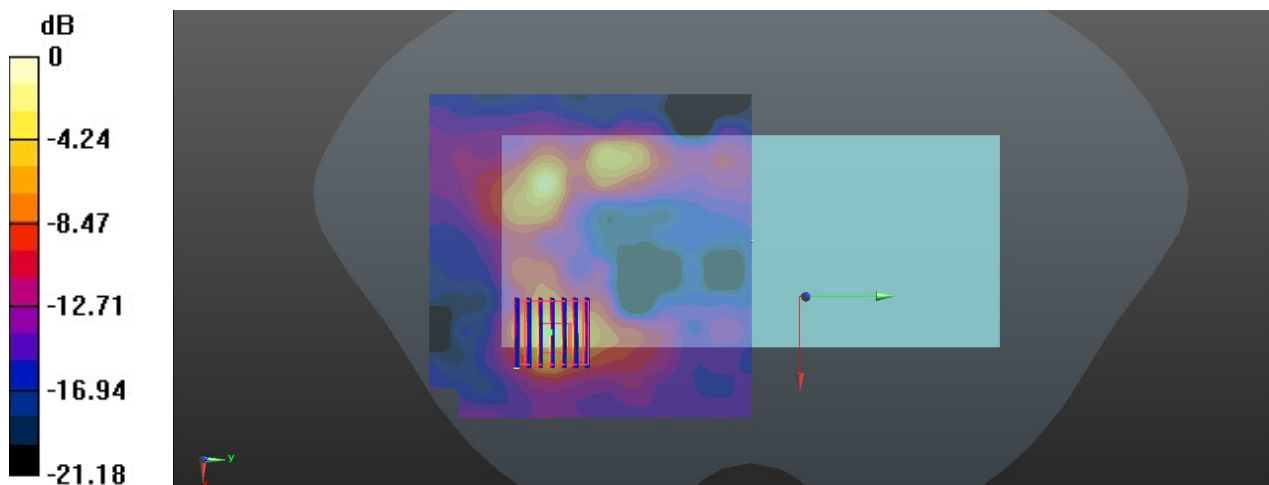
Zoom Scan (7x7x7)/Cube 0: Measurement grid: dx=4mm, dy=4mm, dz=1.4mm

Reference Value = 1.283 V/m; Power Drift = -0.02 dB

Peak SAR (extrapolated) = 0.618 W/kg

SAR(1 g) = 0.1 W/kg; SAR(10 g) = 0.028 W/kg

Maximum value of SAR (measured) = 0.193 W/kg



0 dB = 0.193 W/kg = -7.14 dBW/kg

41_WLAN5GHz_802.11ac-VHT80 MCS0_Back_5mm_Ant4_Open_Ch155

Communication System: UID 0, WLAN5G (0); Frequency: 5775 MHz; Duty Cycle: 1:1.089
Medium: HSL_5000 Medium parameters used: $f = 5775$ MHz; $\sigma = 5.167$ S/m; $\epsilon_r = 36.279$; $\rho = 1000$ kg/m³

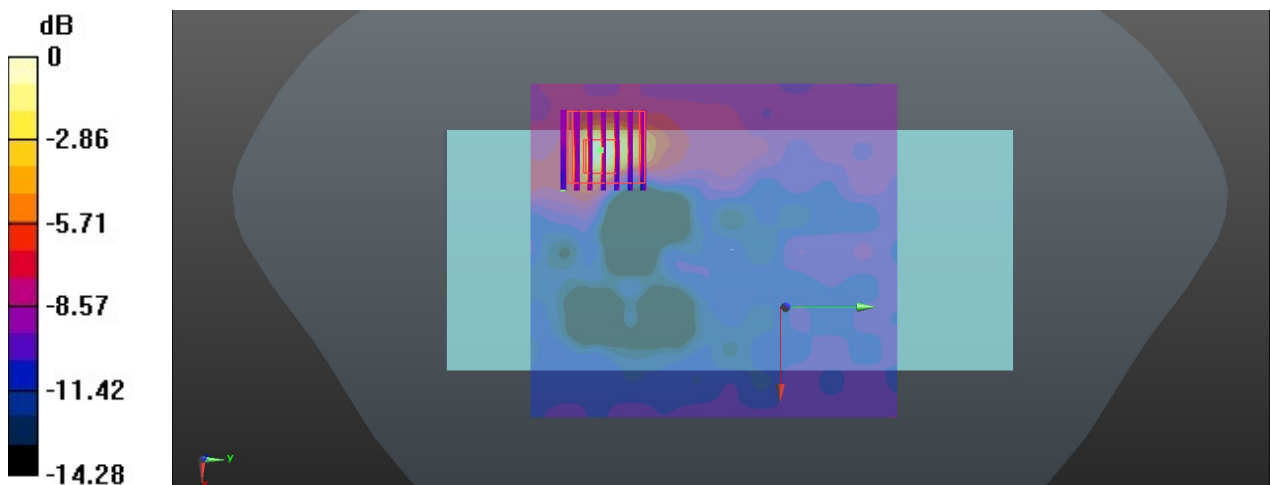
Ambient Temperature : 23.3 °C; Liquid Temperature : 22.8 °C

DASY5 Configuration:

- Probe: EX3DV4 - SN3843; ConvF(4.44, 4.44, 4.44); Calibrated: 2019.9.26
- Sensor-Surface: 1.4mm (Mechanical Surface Detection)
- Electronics: DAE4 Sn1358; Calibrated: 2020.4.28
- Phantom: SAM2; Type: SAM; Serial: TP-1503
- Measurement SW: DASY52, Version 52.10 (4); SEMCAD X Version 14.6.14 (7483)

Area Scan (101x111x1): Interpolated grid: dx=1.000 mm, dy=1.000 mm
Maximum value of SAR (interpolated) = 0.526 W/kg

Zoom Scan (7x7x7)/Cube 0: Measurement grid: dx=4mm, dy=4mm, dz=1.4mm
Reference Value = 2.695 V/m; Power Drift = -0.01 dB
Peak SAR (extrapolated) = 1.18 W/kg
SAR(1 g) = 0.23 W/kg; SAR(10 g) = 0.098 W/kg
Maximum value of SAR (measured) = 0.537 W/kg



0 dB = 0.537 W/kg = -2.70 dBW/kg

42_GSM850_GPRS (2 Tx slots)_Back_5mm_Close_Ch128

Communication System: UID 0, GSM850 (0); Frequency: 824.2 MHz; Duty Cycle: 1:4.15
Medium: HSL_850 Medium parameters used: $f = 824.2$ MHz; $\sigma = 0.94$ S/m; $\epsilon_r = 41.268$; $\rho = 1000$ kg/m³

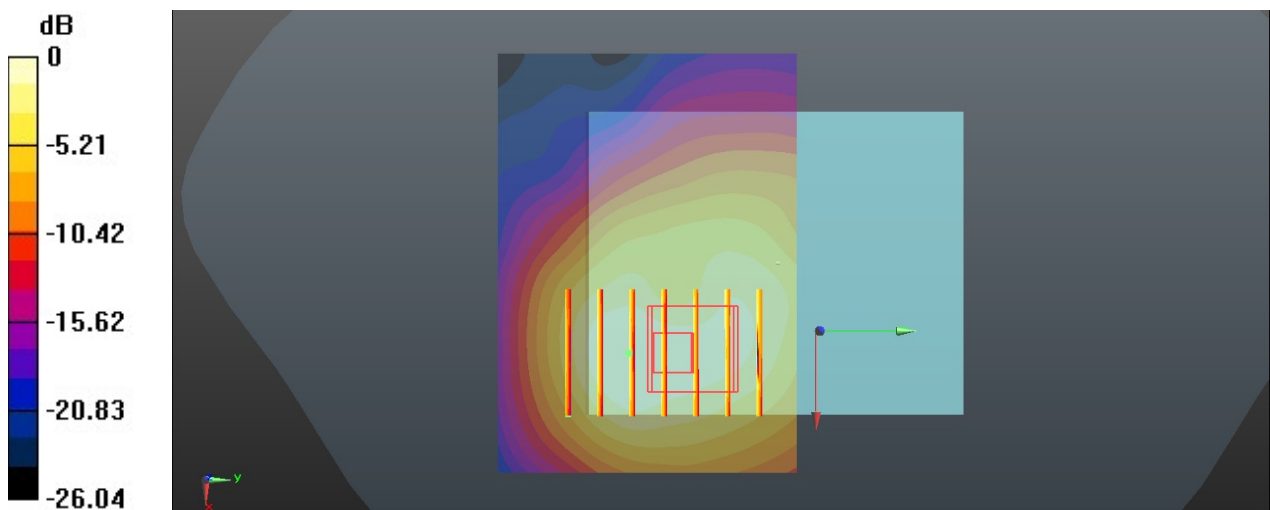
Ambient Temperature : 23.3 °C; Liquid Temperature : 22.9 °C

DASY5 Configuration:

- Probe: EX3DV4 - SN3843; ConvF(9.07, 9.07, 9.07); Calibrated: 2019.9.26
- Sensor-Surface: 1.4mm (Mechanical Surface Detection)
- Electronics: DAE4 Sn1358; Calibrated: 2020.4.28
- Phantom: SAM2; Type: SAM; Serial: TP-1503
- Measurement SW: DASY52, Version 52.10 (4); SEMCAD X Version 14.6.14 (7483)

Area Scan (71x51x1): Interpolated grid: dx=1.500 mm, dy=1.500 mm
Maximum value of SAR (interpolated) = 0.737 W/kg

Zoom Scan (5x7x5)/Cube 0: Measurement grid: dx=8mm, dy=8mm, dz=5mm
Reference Value = 14.98 V/m; Power Drift = -0.05 dB
Peak SAR (extrapolated) = 0.765 W/kg
SAR(1 g) = 0.587 W/kg; SAR(10 g) = 0.325 W/kg
Maximum value of SAR (measured) = 0.577 W/kg



0 dB = 0.577 W/kg = -2.39 dBW/kg

43_GSM1900_GPRS 3 Tx slots_Back_5mm_Close_Ch512

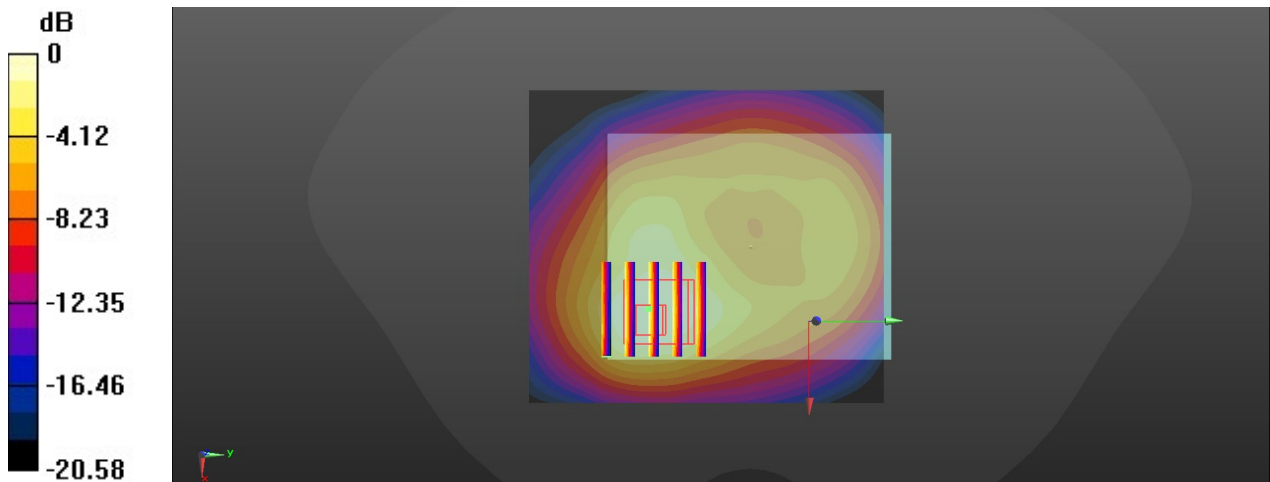
Communication System: UID 0, PCS (0); Frequency: 1850.2 MHz; Duty Cycle: 1:2.77
 Medium: HSL_1900 Medium parameters used: $f = 1850.2$ MHz; $\sigma = 1.323$ S/m; $\epsilon_r = 39.902$; $\rho = 1000$ kg/m³
 Ambient Temperature : 23.4 °C; Liquid Temperature : 22.6 °C

DASY5 Configuration:

- Probe: EX3DV4 - SN3843; ConvF(7.67, 7.67, 7.67); Calibrated: 2019.9.26
- Sensor-Surface: 1.4mm (Mechanical Surface Detection)
- Electronics: DE4 Sn1358; Calibrated: 2020.4.28
- Phantom: SAM2; Type: SAM; Serial: TP-1503
- Measurement SW: DASY52, Version 52.10 (4); SEMCAD X Version 14.6.14 (7483)

Area Scan (71x81x1): Interpolated grid: dx=1.500 mm, dy=1.500 mm
 Maximum value of SAR (interpolated) = 1.08 W/kg

Zoom Scan (5x5x5)/Cube 0: Measurement grid: dx=8mm, dy=8mm, dz=5mm
 Reference Value = 12.22 V/m; Power Drift = 0.06 dB
 Peak SAR (extrapolated) = 1.55 W/kg
SAR(1 g) = 0.843 W/kg; SAR(10 g) = 0.466 W/kg
 Maximum value of SAR (measured) = 0.988 W/kg



0 dB = 0.988 W/kg = -0.05 dBW/kg

44_WCDMA II_RMC 12.2Kbps_Back_5mm_Close_Ch9400

Communication System: UID 0, WCDMA (0); Frequency: 1880MHz; Duty Cycle: 1:1 Medium: HSL_1900 Medium parameters used: $f = 1880 \text{ MHz}$; $\sigma = 1.423 \text{ S/m}$; $\epsilon_r = 39.677$; $\rho = 1000 \text{ kg/m}^3$

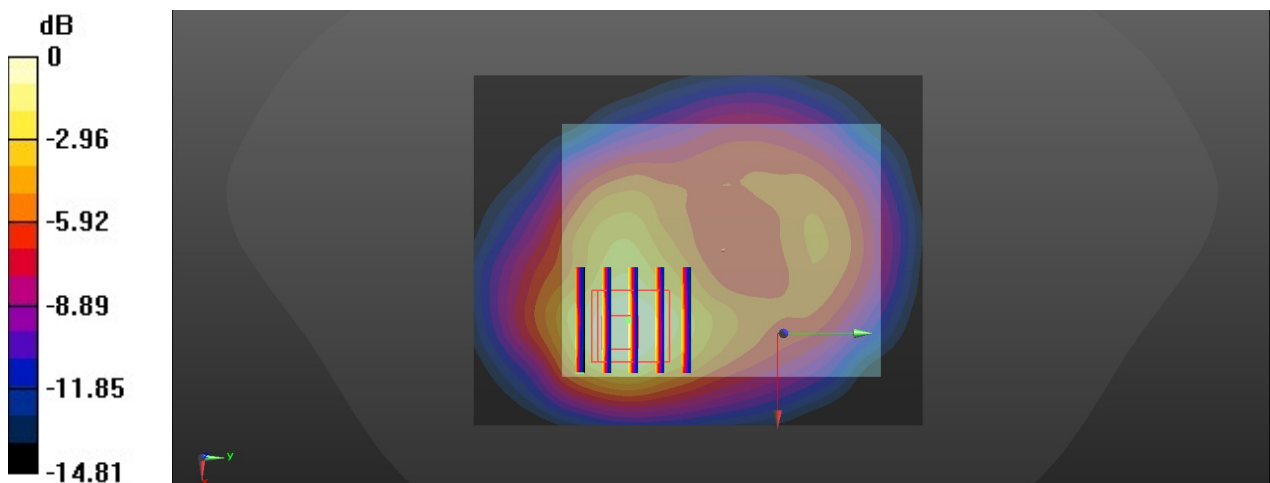
Ambient Temperature : 23.3 °C; Liquid Temperature : 22.7 °C

DASY5 Configuration:

- Probe: EX3DV4 - SN7592; ConvF(8.22, 8.22, 8.22); Calibrated: 2020.5.22
- Sensor-Surface: 1.4mm (Mechanical Surface Detection)
- Electronics: DAE4 Sn1338; Calibrated: 2019.11.20
- Phantom: SAM1; Type: SAM; Serial: TP-1753
- Measurement SW: DASY52, Version 52.10 (4); SEMCAD X Version 14.6.14 (7483)

Area Scan (71x91x1): Interpolated grid: $dx=1.500 \text{ mm}$, $dy=1.500 \text{ mm}$
 Maximum value of SAR (interpolated) = 0.903 W/kg

Zoom Scan (5x5x5)/Cube 0: Measurement grid: $dx=8\text{mm}$, $dy=8\text{mm}$, $dz=5\text{mm}$
 Reference Value = 11.36 V/m; Power Drift = 0.01 dB
 Peak SAR (extrapolated) = 1.37 W/kg
SAR(1 g) = 0.756 W/kg; SAR(10 g) = 0.422 W/kg
 Maximum value of SAR (measured) = 0.858 W/kg



0 dB = 0.858 W/kg = -0.67 dBW/kg

45_WCDMA IV_RMC 12.2Kbps_Back_5mm_Close_Ch1513

Communication System: UID 0, WCDMA (0); Frequency: 1752.6 MHz; Duty Cycle: 1:1
Medium: HSL_1750 Medium parameters used: $f = 1753$ MHz; $\sigma = 1.349$ S/m; $\epsilon_r = 40.226$; $\rho = 1000$ kg/m³

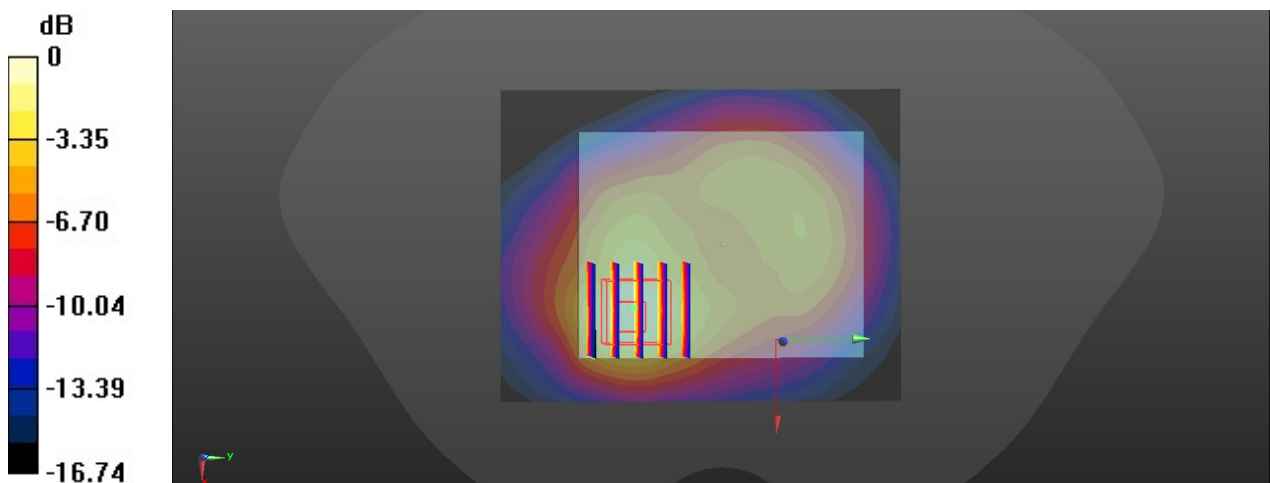
Ambient Temperature : 23.2 °C; Liquid Temperature : 22.9 °C

DASY5 Configuration:

- Probe: EX3DV4 - SN3843; ConvF(7.67, 7.67, 7.67); Calibrated: 2019.9.26
- Sensor-Surface: 1.4mm (Mechanical Surface Detection)
- Electronics: DAE4 Sn1358; Calibrated: 2020.4.28
- Phantom: SAM2; Type: SAM; Serial: TP-1503
- Measurement SW: DASY52, Version 52.10 (4); SEMCAD X Version 14.6.14 (7483)

Area Scan (71x91x1): Interpolated grid: dx=1.500 mm, dy=1.500 mm
Maximum value of SAR (interpolated) = 0.733 W/kg

Zoom Scan (5x5x5)/Cube 0: Measurement grid: dx=8mm, dy=8mm, dz=5mm
Reference Value = 11.59 V/m; Power Drift = 0.01 dB
Peak SAR (extrapolated) = 1.09 W/kg
SAR(1 g) = 0.621 W/kg; SAR(10 g) = 0.337 W/kg
Maximum value of SAR (measured) = 0.711 W/kg



0 dB = 0.711 W/kg = -1.48 dBW/kg

46_WCDMA V_RMC 12.2Kbps_Back_5mm_Close_Ch4182

Communication System: UID 0, WCDMA; Frequency: 836.4 MHz; Duty Cycle: 1:1
Medium: HSL_850 Medium parameters used: $f = 836.4$ MHz; $\sigma = 0.943$ S/m; $\epsilon_r = 41.092$; $\rho = 1000$ kg/m³

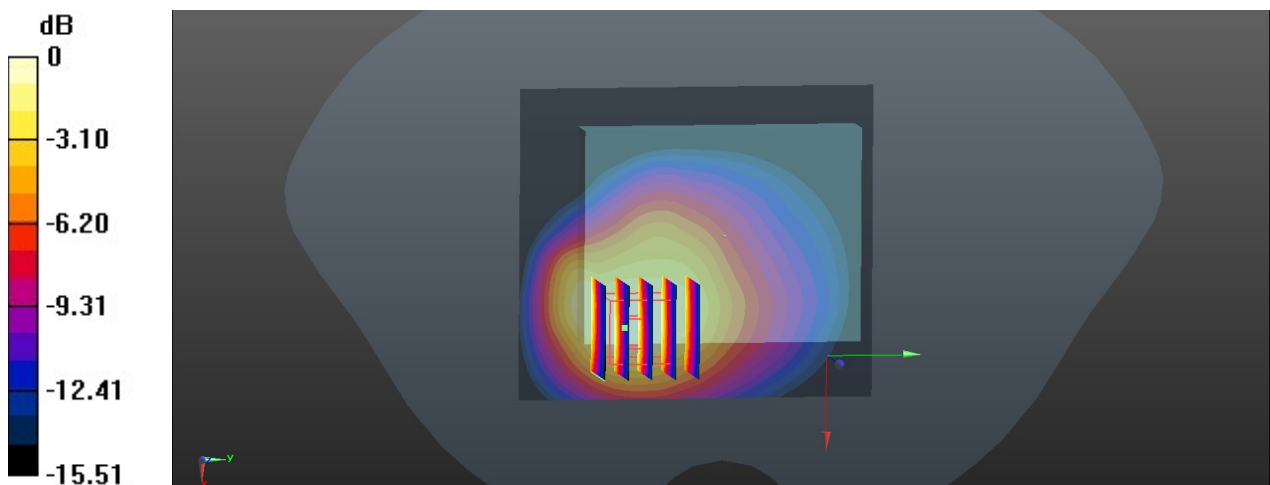
Ambient Temperature : 23.1 °C; Liquid Temperature : 22.7 °C

DASY5 Configuration:

- Probe: EX3DV4 - SN7592; ConvF(10.05, 10.05, 10.05); Calibrated: 2020.5.22
- Sensor-Surface: 1.4mm (Mechanical Surface Detection)
- Electronics: DAE4 Sn1338; Calibrated: 2019.11.20
- Phantom: SAM1; Type: SAM; Serial: TP-1753
- Measurement SW: DASY52, Version 52.10 (4); SEMCAD X Version 14.6.14 (7483)

Area Scan (71x81x1): Interpolated grid: dx=1.500 mm, dy=1.500 mm
Maximum value of SAR (interpolated) = 1.03 W/kg

Zoom Scan (5x5x7)/Cube 0: Measurement grid: dx=8mm, dy=8mm, dz=5mm
Reference Value = 34.21 V/m; Power Drift = -0.06 dB
Peak SAR (extrapolated) = 1.92 W/kg
SAR(1 g) = 0.694 W/kg; SAR(10 g) = 0.371 W/kg
Maximum value of SAR (measured) = 1.05 W/kg



0 dB = 2.84 W/kg = 4.53 dBW/kg