

Test Laboratory: Sporton International Inc.

Device Under Test Properties

Manufacturer	Dimensions [mm]	IMEI	DUT Type
	160.0 x 70.0 x 8.0		Phone

Exposure Conditions

Phantom Section	Position, Test Distance [mm]	Frequency [MHz]	Conversion Factor
5G	BACK, 2.00	27900.0	1.0

Hardware Setup

Phantom	Medium	Probe, Calibration Date	DAE, Calibration Date
mmWave - xxxx	Air -	EUmmWV4 - SN9461_F1-78GHz, 2019-11-05	DAE4 Sn376, 2019-12-06

Scans Setup

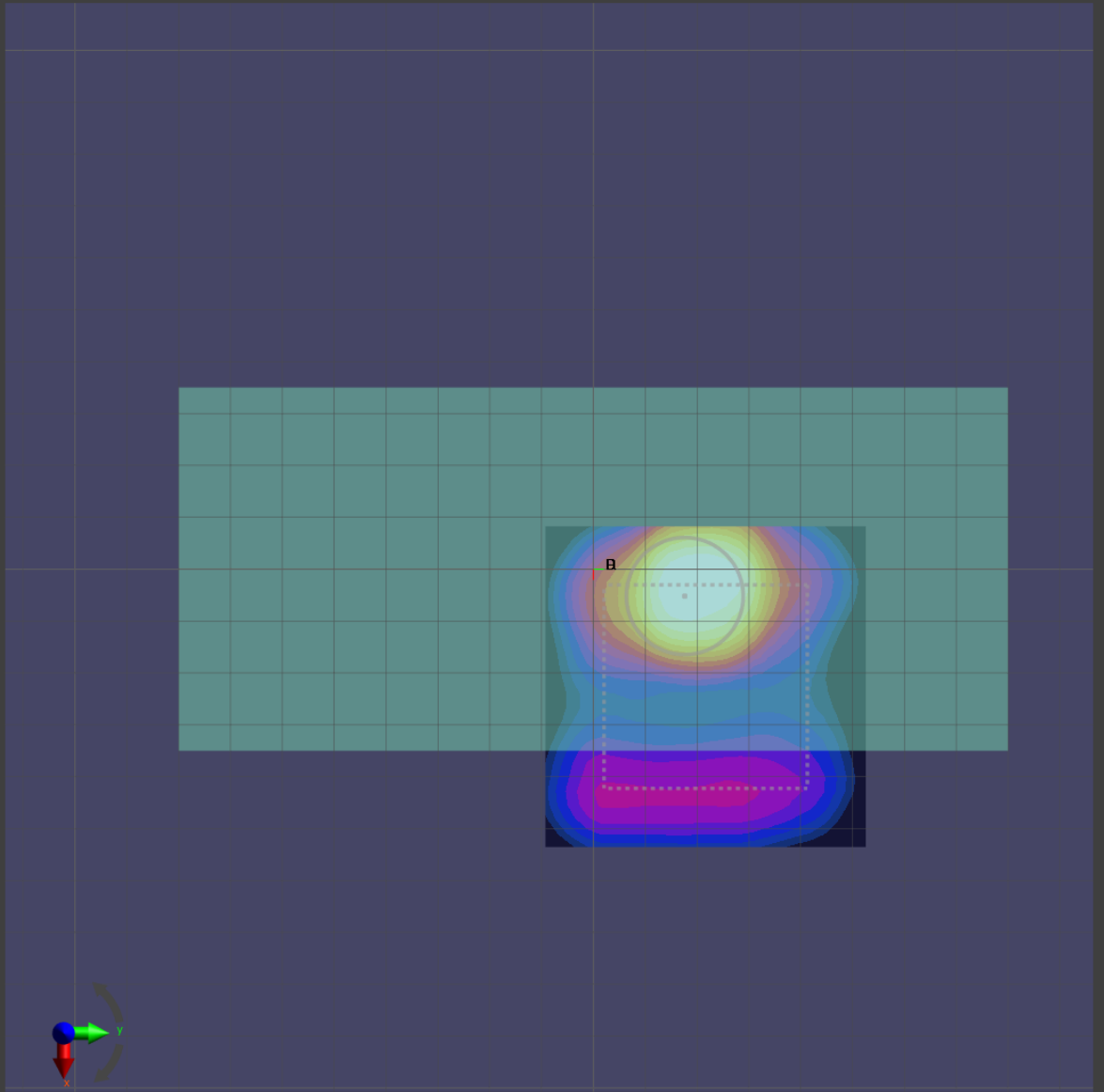
Grid Extents [mm]	60.0 x 60.0
Grid Steps [λ]	0.25 x 0.25
Sensor Surface [mm]	2.0

Measurement Results

Date	2020-02-08, 02:43
Avg. Area [cm^2]	4.00
$S_{\text{avg inc}}$ [W/m^2]	2.70
$S_{\text{avg tot}}$ [W/m^2]	3.21
S_{peak} [W/m^2]	13.9
E_{peak} [V/m]	70.2
H_{peak} [A/m]	0.215
Power Drift [dB]	-0.10

Averaged [4.0 cm²] |Re{S}|(x,y,z,f0) [dB(3.21W/m²)]

0



-10

Test Laboratory: Sporton International Inc.

Device Under Test Properties

Manufacturer	Dimensions [mm]	IMEI	DUT Type
	160.0 x 70.0 x 8.0		Phone

Exposure Conditions

Phantom Section	Position, Test Distance [mm]	Frequency [MHz]	Conversion Factor
5G	BACK, 2.00	38500.0	1.0

Hardware Setup

Phantom	Medium	Probe, Calibration Date	DAE, Calibration Date
mmWave - xxxx	Air -	EUmmWV4 - SN9461_F1-78GHz, 2019-11-05	DAE4 Sn376, 2019-12-06

Scans Setup

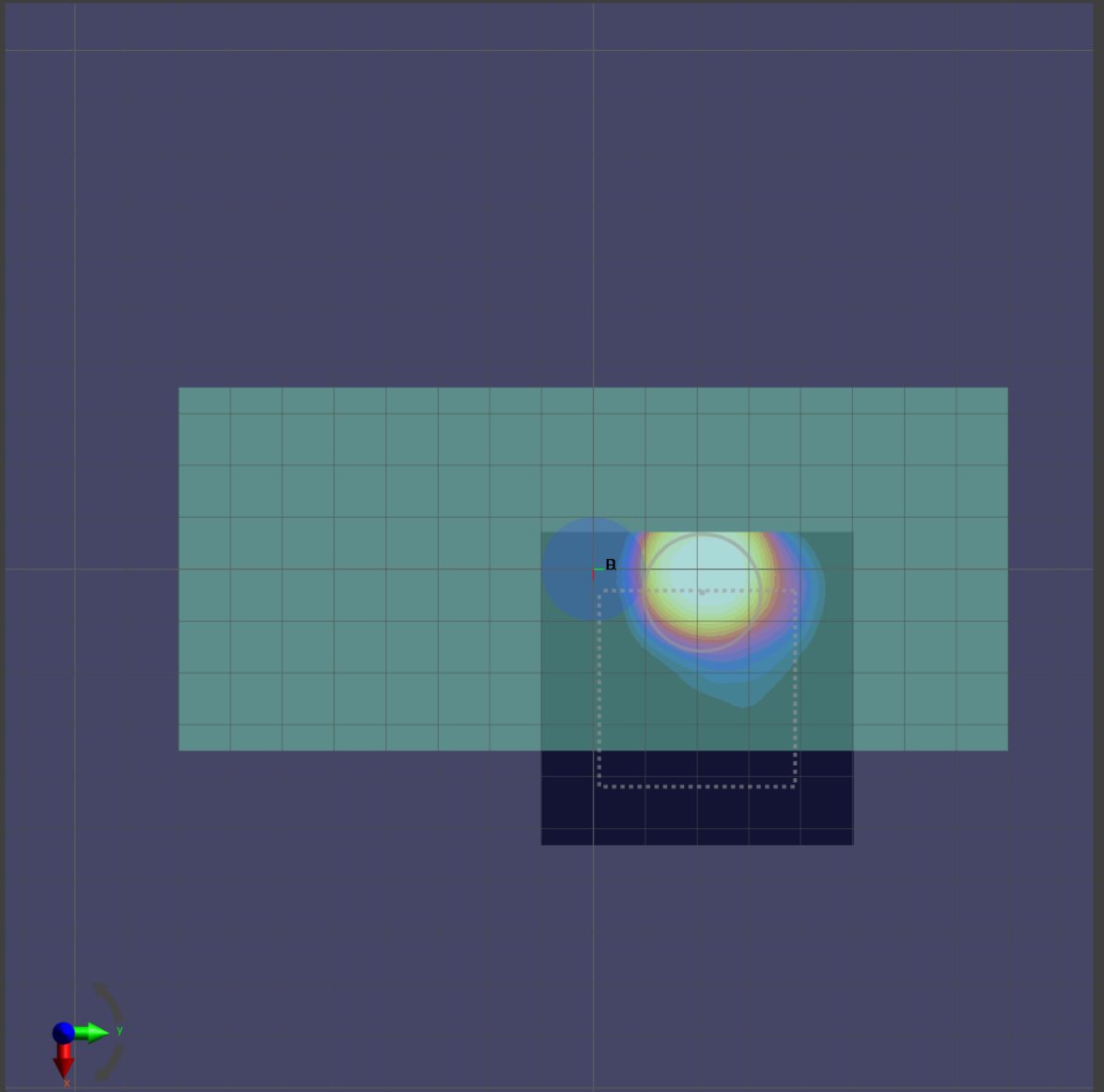
Grid Extents [mm]	60.0 x 60.0
Grid Steps [lambda]	0.25 x 0.25
Sensor Surface [mm]	2.0

Measurement Results

Date	2020-02-08, 05:04
Avg. Area [cm ²]	4.00
S _{avg inc} [W/m ²]	2.85
S _{avg tot} [W/m ²]	3.91
S _{peak} [W/m ²]	27.0
E _{peak} [V/m]	90.9
H _{peak} [A/m]	0.312
Power Drift [dB]	-0.08

Averaged [4.0 cm²] |Re{S}|(x,y,z,f0) [dB(3.91W/m²)]

0



-10