

Test Laboratory: Sporton International Inc.

Device Under Test Properties

Manufacturer	Dimensions [mm]	IMEI	DUT Type
	100.0 x 100.0 x 100.0		Verification source

Exposure Conditions

Phantom Section	Position, Test Distance [mm]	Frequency [MHz]	Conversion Factor
5G	FRONT, 5.55	30000.0	1.0

Hardware Setup

Phantom	Medium	Probe, Calibration Date	DAE, Calibration Date
mmWave - xxxx	Air -	EUmmWV4 - SN9461_F1-78GHz, 2019-11-05	DAE4 Sn376, 2019-12-06

Scans Setup

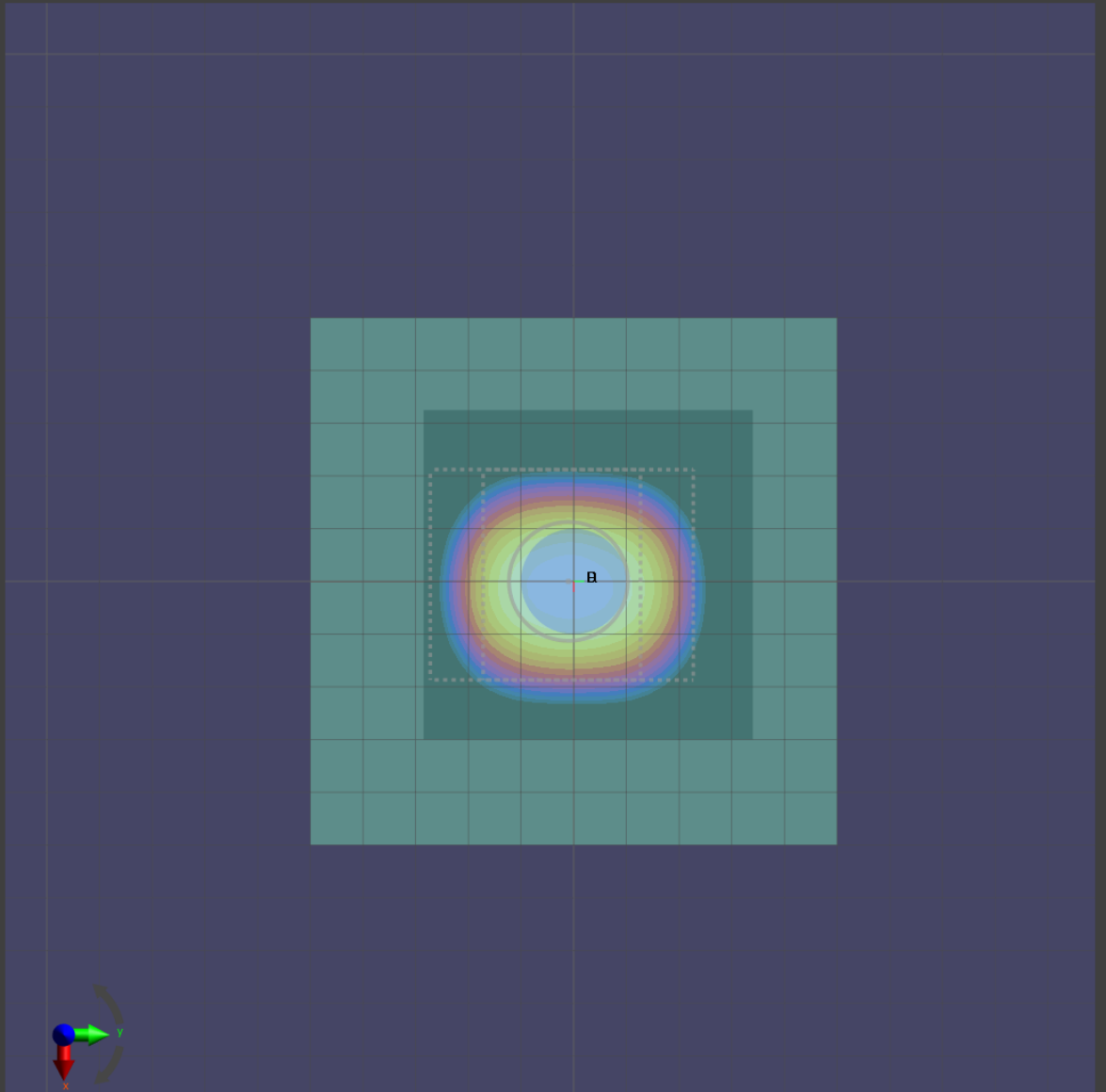
Grid Extents [mm]	60.0 x 60.0
Grid Steps [lambda]	0.25 x 0.25
Sensor Surface [mm]	5.55

Measurement Results

Date	2020-01-10, 01:04
Avg. Area [cm ²]	4.00
S _{avg inc} [W/m ²]	30.3
S _{avg tot} [W/m ²]	30.7
S _{peak} [W/m ²]	46.0
E _{peak} [V/m]	129
H _{peak} [A/m]	0.364
Power Drift [dB]	0.00

Averaged [4.0 cm²] |Re{S}|(x,y,z,f0) [dB(30.7W/m²)]

0



-10

Test Laboratory: Sporton International Inc.

Device Under Test Properties

Manufacturer	Dimensions [mm]	IMEI	DUT Type
	100.0 x 100.0 x 100.0		Verification source

Exposure Conditions

Phantom Section	Position, Test Distance [mm]	Frequency [MHz]	Conversion Factor
5G	FRONT, 5.55	30000.0	1.0

Hardware Setup

Phantom	Medium	Probe, Calibration Date	DAE, Calibration Date
mmWave - xxxx	Air -	EUmmWV4 - SN9461_F1-78GHz, 2019-11-05	DAE4 Sn376, 2019-12-06

Scans Setup

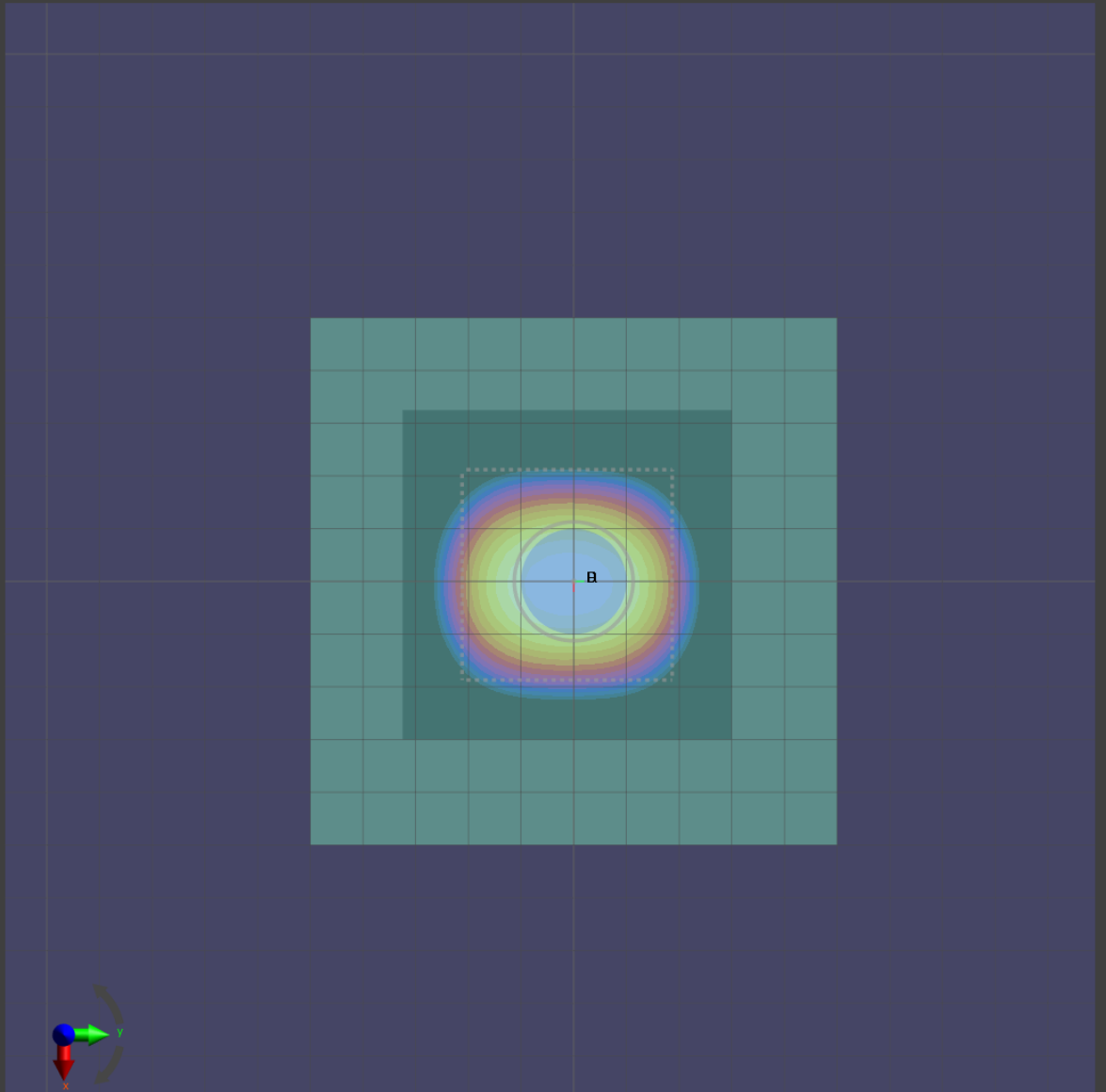
Grid Extents [mm]	60.0 x 60.0
Grid Steps [λ]	0.25 x 0.25
Sensor Surface [mm]	5.55

Measurement Results

Date	2020-01-17, 00:19
Avg. Area [cm^2]	4.00
$S_{\text{avg inc}}$ [W/m^2]	30.2
$S_{\text{avg tot}}$ [W/m^2]	30.7
S_{peak} [W/m^2]	44.1
E_{peak} [V/m]	128
H_{peak} [A/m]	0.343
Power Drift [dB]	0.02

Averaged [4.0 cm²] |Re{S}|(x,y,z,f0) [dB(30.7W/m²)]

0



-10

Test Laboratory: Sporton International Inc.

Device Under Test Properties

Manufacturer	Dimensions [mm]	IMEI	DUT Type
	100.0 x 100.0 x 100.0		Verification source

Exposure Conditions

Phantom Section	Position, Test Distance [mm]	Frequency [MHz]	Conversion Factor
5G	FRONT, 5.55	30000.0	1.0

Hardware Setup

Phantom	Medium	Probe, Calibration Date	DAE, Calibration Date
mmWave - xxxx	Air -	EUmmWV4 - SN9461_F1-78GHz, 2019-11-05	DAE4 Sn376, 2019-12-06

Scans Setup

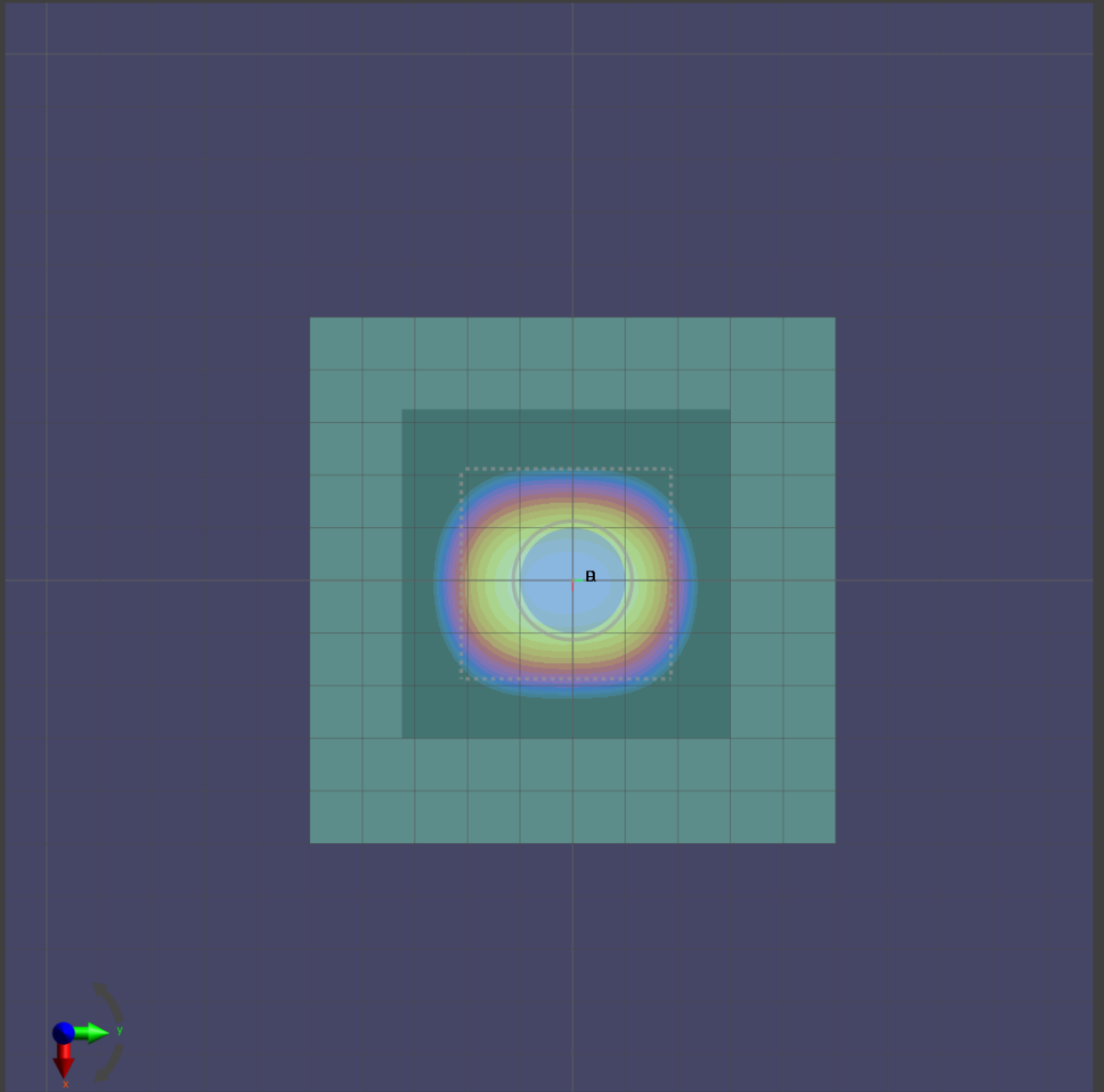
Grid Extents [mm]	60.0 x 60.0
Grid Steps [λ]	0.25 x 0.25
Sensor Surface [mm]	5.55

Measurement Results

Date	2020-01-24, 00:29
Avg. Area [cm^2]	4.00
$S_{\text{avg inc}}$ [W/m^2]	30.5
$S_{\text{avg tot}}$ [W/m^2]	30.9
S_{peak} [W/m^2]	44.3
E_{peak} [V/m]	128
H_{peak} [A/m]	0.352
Power Drift [dB]	-0.01

Averaged [4.0 cm²] |Re{S}|(x,y,z,f0) [dB(30.9W/m²)]

0



-10

Test Laboratory: Sporton International Inc.

Device Under Test Properties

Manufacturer	Dimensions [mm]	IMEI	DUT Type
	100.0 x 100.0 x 100.0		Verification source

Exposure Conditions

Phantom Section	Position, Test Distance [mm]	Frequency [MHz]	Conversion Factor
5G	FRONT, 5.55	30000.0	1.0

Hardware Setup

Phantom	Medium	Probe, Calibration Date	DAE, Calibration Date
mmWave - xxxx	Air -	EUmmWV4 - SN9461_F1-78GHz, 2019-11-05	DAE4 Sn376, 2019-12-06

Scans Setup

Grid Extents [mm]	60.0 x 60.0
Grid Steps [λ]	0.25 x 0.25
Sensor Surface [mm]	5.55

Measurement Results

Date	2020-02-02, 01:07
Avg. Area [cm^2]	4.00
$S_{\text{avg inc}}$ [W/m^2]	30.1
$S_{\text{avg tot}}$ [W/m^2]	30.8
S_{peak} [W/m^2]	45.1
E_{peak} [V/m]	129
H_{peak} [A/m]	0.357
Power Drift [dB]	-0.03

Averaged [4.0 cm²] |Re{S}|(x,y,z,f0) [dB(30.5W/m²)]

