

### 01\_GSM850\_GPRS (4 Tx slots)\_Left Cheek\_0mm\_Ch251

Communication System: UID 0, GSM850 (0); Frequency: 848.8 MHz; Duty Cycle: 1:2.0797  
Medium: HSL\_835 Medium parameters used:  $f = 848.8$  MHz;  $\sigma = 0.928$  S/m;  $\epsilon_r = 42.597$ ;  $\rho = 1000$  kg/m<sup>3</sup>

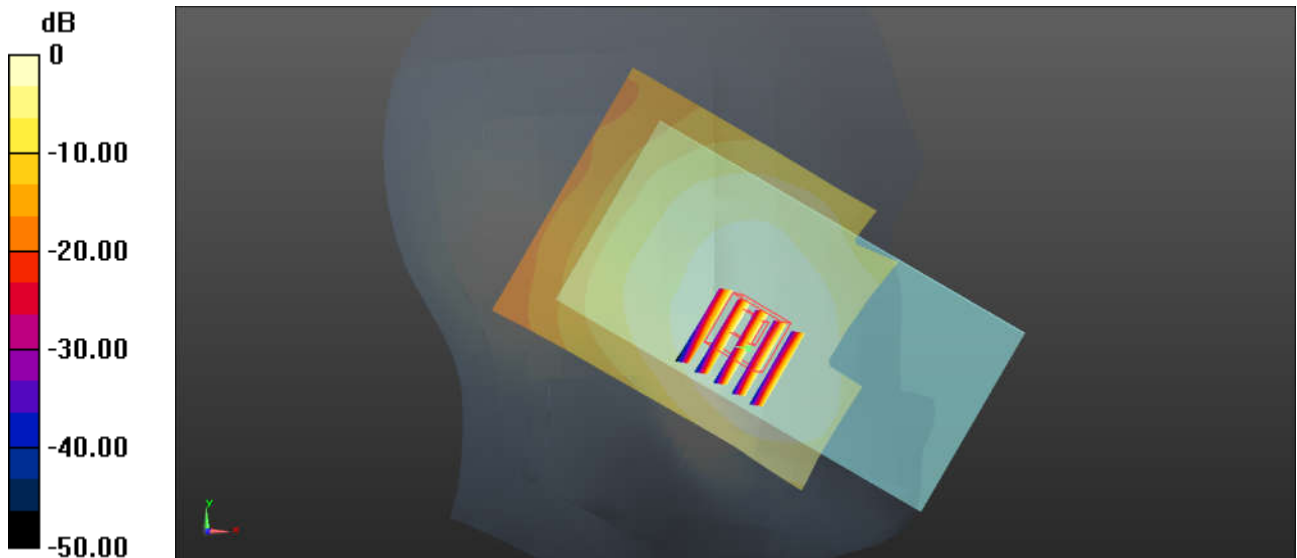
Ambient Temperature : 23.3 °C ; Liquid Temperature : 22.8 °C

#### DASY5 Configuration:

- Probe: EX3DV4 - SN3857; ConvF(9.51, 9.51, 9.51); Calibrated: 2018.5.31
- Sensor-Surface: 1.4mm (Mechanical Surface Detection)
- Electronics: DAE4 Sn1358; Calibrated: 2018.4.19
- Phantom: SAM2; Type: SAM; Serial: TP-1754
- Measurement SW: DASY52, Version 52.10 (1); SEMCAD X Version 14.6.11 (7439)

**Ch251/Area Scan (71x91x1):** Interpolated grid: dx=1.500 mm, dy=1.500 mm  
Maximum value of SAR (interpolated) = 0.253 W/kg

**Ch251/Zoom Scan (5x5x7)/Cube 0:** Measurement grid: dx=8mm, dy=8mm, dz=5mm  
Reference Value = 17.14 V/m; Power Drift = 0.07 dB  
Peak SAR (extrapolated) = 0.274 W/kg  
**SAR(1 g) = 0.210 W/kg; SAR(10 g) = 0.160 W/kg**  
Maximum value of SAR (measured) = 0.247 W/kg



0 dB = 0.253 W/kg = -5.97 dBW/kg

**02\_GSM1900\_GPRS 4 Tx slots\_Left Cheek\_0mm\_Ch810**

Communication System: UID 0, GPRS/EDGE (4 Tx slots) (0); Frequency: 1909.8 MHz; Duty Cycle: 1:2.08

Medium: HSL\_1900 Medium parameters used:  $f = 1909.8$  MHz;  $\sigma = 1.435$  S/m;  $\epsilon_r = 39.875$ ;  $\rho = 1000$  kg/m<sup>3</sup>

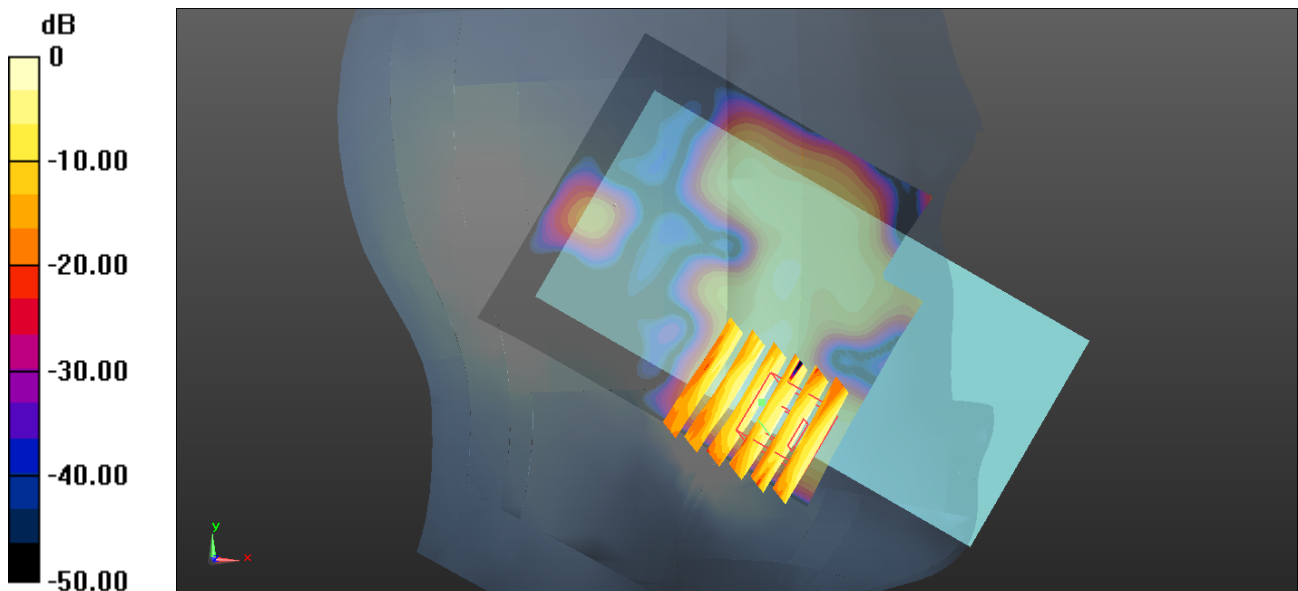
Ambient Temperature : 23.4 °C; Liquid Temperature : 22.7 °C

**DASY5 Configuration:**

- Probe: EX3DV4 - SN3954; ConvF(8.41, 8.41, 8.41); Calibrated: 2018.1.31;
- Sensor-Surface: 1.4mm (Mechanical Surface Detection)
- Electronics: DAE4 Sn1210; Calibrated: 2018.5.28
- Phantom: SAM2; Type: SAM; Serial: TP-1503
- Measurement SW: DASY52, Version 52.8 (8); SEMCAD X Version 14.6.10 (7372)

**Ch810/Area Scan (71x81x1):** Interpolated grid: dx=1.500 mm, dy=1.500 mm  
 Maximum value of SAR (interpolated) = 0.0875 W/kg

**Ch810/Zoom Scan (6x6x7)/Cube 0:** Measurement grid: dx=8mm, dy=8mm, dz=5mm  
 Reference Value = 4.302 V/m; Power Drift = -0.02 dB  
 Peak SAR (extrapolated) = 0.0560 W/kg  
**SAR(1 g) = 0.022 W/kg; SAR(10 g) = 0.011 W/kg**  
 Maximum value of SAR (measured) = 0.0405 W/kg



0 dB = 0.0875 W/kg = -10.58 dBW/kg

### 03\_WCDMA Band V\_RMC 12.2Kbps\_Left Cheek\_0mm\_Ch4132

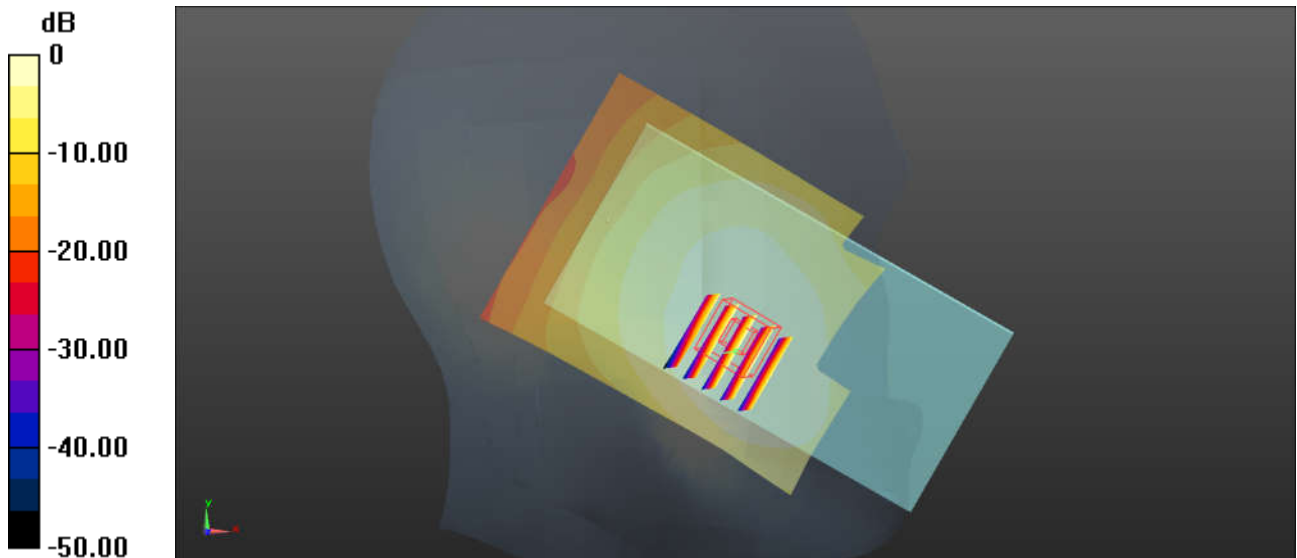
Communication System: UID 0, WCDMA (0); Frequency: 826.4 MHz; Duty Cycle: 1:1  
Medium: HSL\_835 Medium parameters used (interpolated):  $f = 826.4$  MHz;  $\sigma = 0.906$  S/m;  $\epsilon_r = 42.868$ ;  
 $\rho = 1000$  kg/m<sup>3</sup>  
Ambient Temperature : 23.3 °C; Liquid Temperature : 22.8 °C

#### DASY5 Configuration:

- Probe: EX3DV4 - SN3857; ConvF(9.51, 9.51, 9.51); Calibrated: 2018.5.31
- Sensor-Surface: 1.4mm (Mechanical Surface Detection)
- Electronics: DAE4 Sn1358; Calibrated: 2018.4.19
- Phantom: SAM2; Type: SAM; Serial: TP-1754
- Measurement SW: DASY52, Version 52.10 (1); SEMCAD X Version 14.6.11 (7439)

**Ch4132/Area Scan (71x91x1):** Interpolated grid: dx=1.500 mm, dy=1.500 mm  
Maximum value of SAR (interpolated) = 0.312 W/kg

**Ch4132/Zoom Scan (5x5x7)/Cube 0:** Measurement grid: dx=8mm, dy=8mm, dz=5mm  
Reference Value = 19.19 V/m; Power Drift = 0.07 dB  
Peak SAR (extrapolated) = 0.338 W/kg  
**SAR(1 g) = 0.259 W/kg; SAR(10 g) = 0.197 W/kg**  
Maximum value of SAR (measured) = 0.305 W/kg



0 dB = 0.312 W/kg = -5.06 dBW/kg

**04\_WCDMA Band IV\_RMC 12.2Kbps\_Left Cheek\_0mm\_Ch1513**

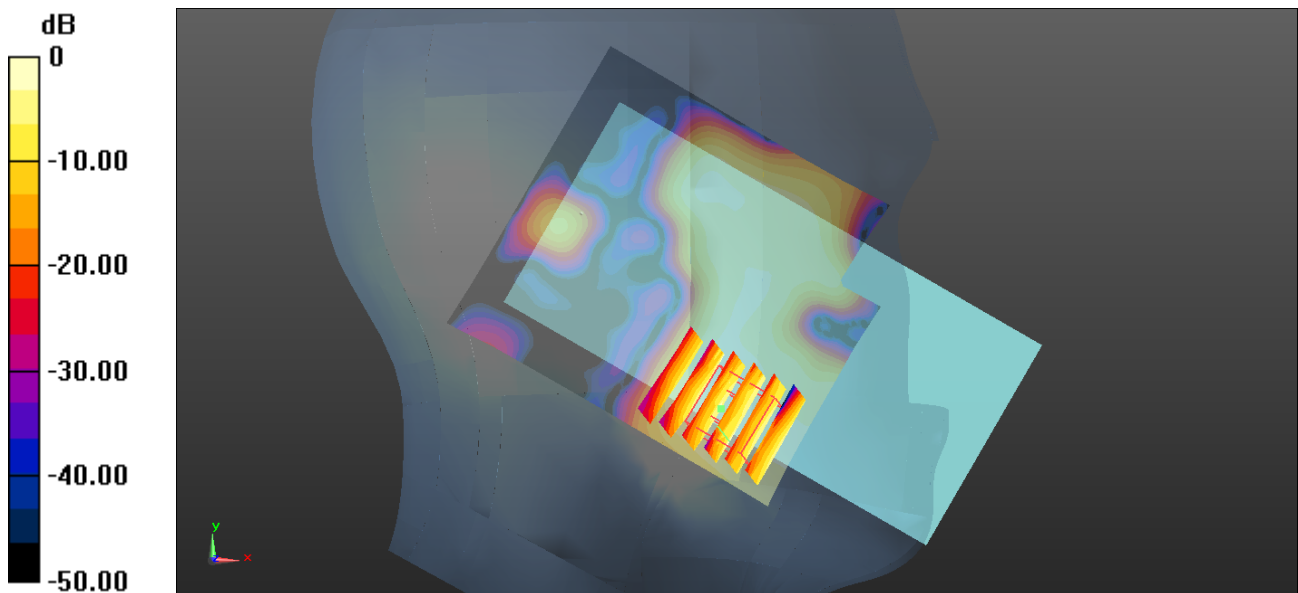
Communication System: UID 0, UMTS (0); Frequency: 1752.6 MHz; Duty Cycle: 1:1  
 Medium: HSL\_1750 Medium parameters used:  $f = 1752.6$  MHz;  $\sigma = 1.348$  S/m;  $\epsilon_r = 41.132$ ;  $\rho = 1000$  kg/m<sup>3</sup>  
 Ambient Temperature : 23.5 °C ; Liquid Temperature : 22.8 °C

**DASY5 Configuration:**

- Probe: EX3DV4 - SN3954; ConvF(8.65, 8.65, 8.65); Calibrated: 2018.1.31;
- Sensor-Surface: 1.4 mm (Mechanical Surface Detection)
- Electronics: DAE4 Sn1210; Calibrated: 2018.5.28
- Phantom: SAM2; Type: SAM; Serial: TP-1503
- Measurement SW: DASY52, Version 52.8 (8); SEMCAD X Version 14.6.10 (7372)

**Ch1513/Area Scan (71x81x1):** Interpolated grid: dx=1.500 mm, dy=1.500 mm  
 Maximum value of SAR (interpolated) = 0.0583 W/kg

**Ch1513/Zoom Scan (5x6x7)/Cube 0:** Measurement grid: dx=8mm, dy=8mm, dz=5mm  
 Reference Value = 5.087 V/m; Power Drift = -0.07 dB  
 Peak SAR (extrapolated) = 0.0590 W/kg  
**SAR(1 g) = 0.028 W/kg; SAR(10 g) = 0.020 W/kg**  
 Maximum value of SAR (measured) = 0.0472 W/kg



0 dB = 0.0583 W/kg = -12.34 dBW/kg

**05\_WCDMA Band II\_RMC 12.2Kbps\_Left Cheek\_0mm\_Ch9538**

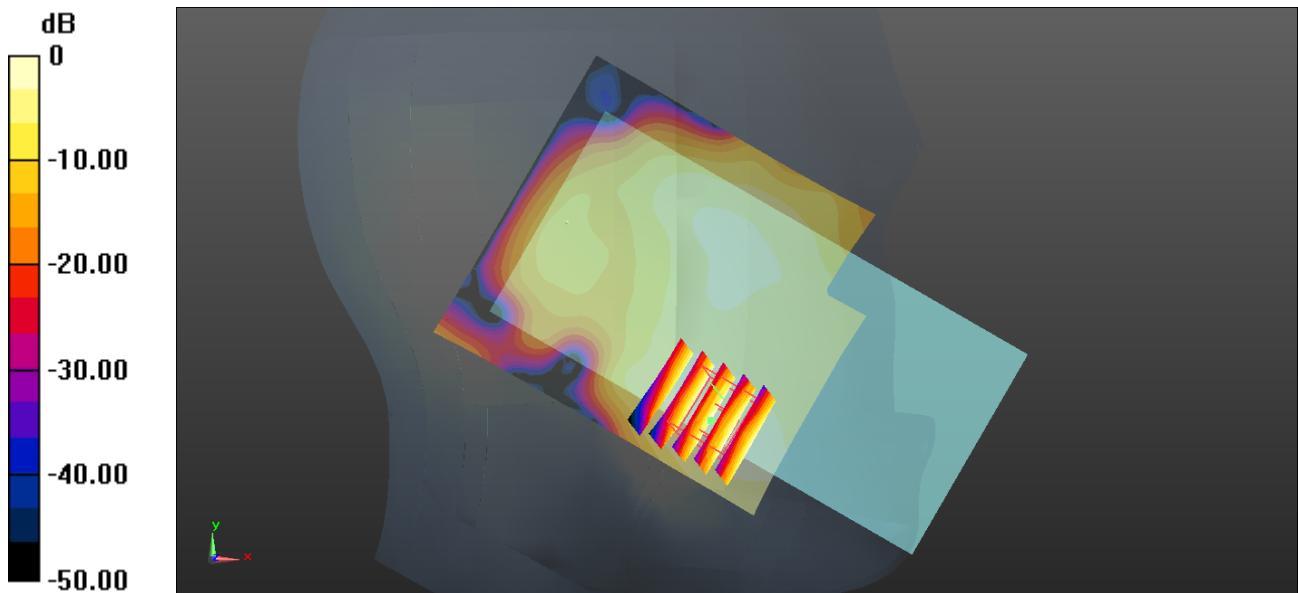
Communication System: UID 0, UMTS (0); Frequency: 1907.6 MHz; Duty Cycle: 1:1  
 Medium: HSL\_1900 Medium parameters used:  $f = 1907.6$  MHz;  $\sigma = 1.432$  S/m;  $\epsilon_r = 39.884$ ;  $\rho = 1000$  kg/m<sup>3</sup>  
 Ambient Temperature : 23.4 °C ; Liquid Temperature : 22.7 °C

**DASY5 Configuration:**

- Probe: EX3DV4 - SN3954; ConvF(8.41, 8.41, 8.41); Calibrated: 2018.1.31;
- Sensor-Surface: 1.4mm (Mechanical Surface Detection)
- Electronics: DAE4 Sn1210; Calibrated: 2018.5.28
- Phantom: SAM2; Type: SAM; Serial: TP-1503
- Measurement SW: DASY52, Version 52.8 (8); SEMCAD X Version 14.6.10 (7372)

**Ch9538/Area Scan (71x81x1):** Interpolated grid: dx=1.500 mm, dy=1.500 mm  
 Maximum value of SAR (interpolated) = 0.125 W/kg

**Ch9538/Zoom Scan (5x5x7)/Cube 0:** Measurement grid: dx=8mm, dy=8mm, dz=5mm  
 Reference Value = 8.103 V/m; Power Drift = -0.04 dB  
 Peak SAR (extrapolated) = 0.107 W/kg  
**SAR(1 g) = 0.074 W/kg; SAR(10 g) = 0.050 W/kg**  
 Maximum value of SAR (measured) = 0.0949 W/kg



0 dB = 0.125 W/kg = -9.03 dBW/kg

### 06\_LTE Band 5\_10M\_QPSK\_1RB\_49Offset\_Left Cheek\_0mm\_Ch20525

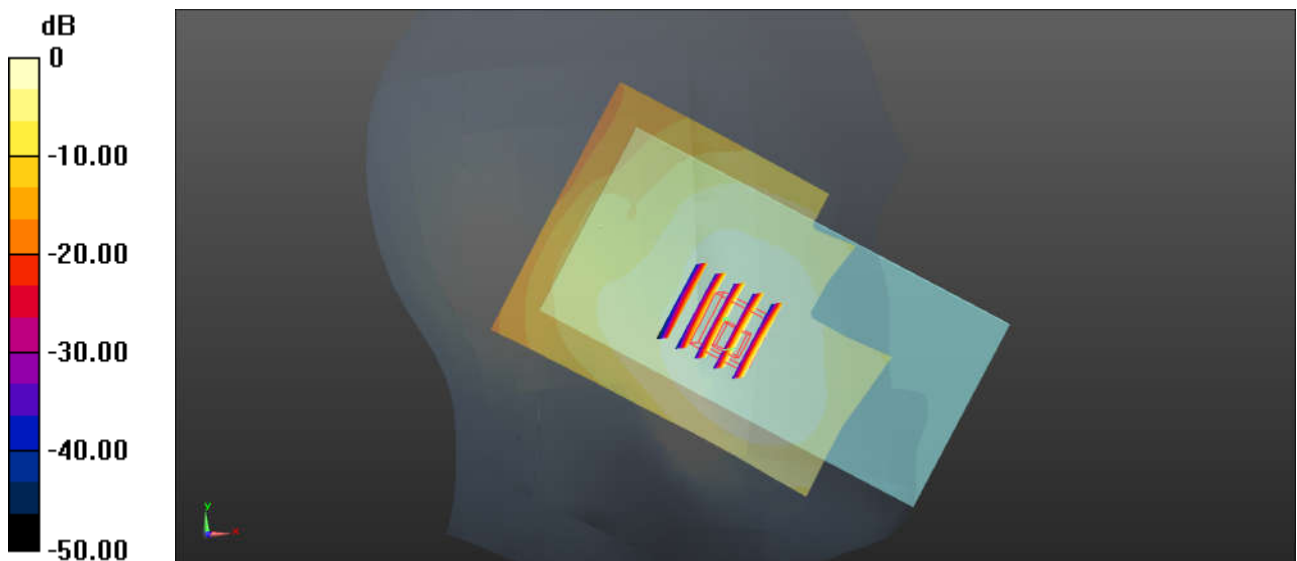
Communication System: UID 0, LTE (0); Frequency: 836.5 MHz; Duty Cycle: 1:1  
Medium: HSL\_835 Medium parameters used (interpolated):  $f = 836.5$  MHz;  $\sigma = 0.916$  S/m;  $\epsilon_r = 42.751$ ;  
 $\rho = 1000$  kg/m<sup>3</sup>  
Ambient Temperature : 23.3 °C; Liquid Temperature : 22.8 °C

#### DASY5 Configuration:

- Probe: EX3DV4 - SN3857; ConvF(9.51, 9.51, 9.51); Calibrated: 2018.5.31
- Sensor-Surface: 1.4mm (Mechanical Surface Detection)
- Electronics: DAE4 Sn1358; Calibrated: 2018.4.19
- Phantom: SAM2; Type: SAM; Serial: TP-1754
- Measurement SW: DASY52, Version 52.10 (1); SEMCAD X Version 14.6.11 (7439)

**Ch20525/Area Scan (71x91x1):** Interpolated grid: dx=1.500 mm, dy=1.500 mm  
Maximum value of SAR (interpolated) = 0.329 W/kg

**Ch20525/Zoom Scan (5x5x7)/Cube 0:** Measurement grid: dx=8mm, dy=8mm, dz=5mm  
Reference Value = 19.52 V/m; Power Drift = 0.05 dB  
Peak SAR (extrapolated) = 0.356 W/kg  
**SAR(1 g) = 0.266 W/kg; SAR(10 g) = 0.202 W/kg**  
Maximum value of SAR (measured) = 0.320 W/kg



0 dB = 0.329 W/kg = -4.83 dBW/kg

**07\_LTE Band 66\_20M\_QPSK\_1RB\_99Offset\_Right Cheek\_0mm\_Ch132572**

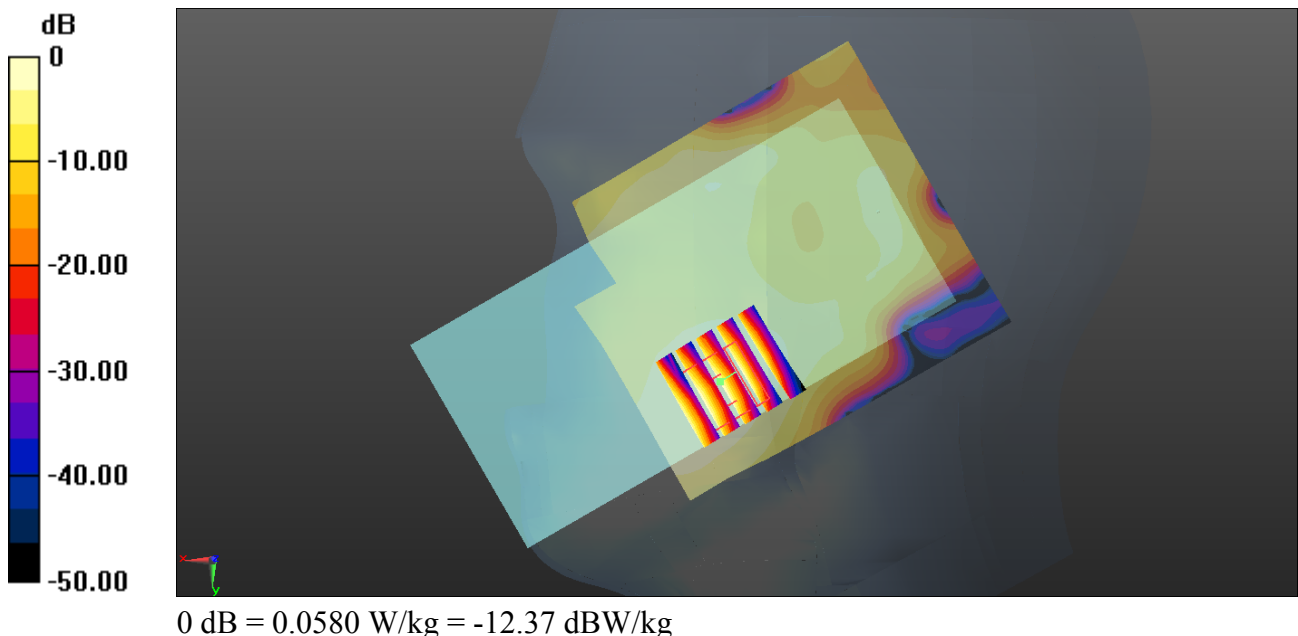
Communication System: UID 0, FDD\_LTE (0); Frequency: 1770 MHz; Duty Cycle: 1:1  
Medium: HSL\_1750 Medium parameters used:  $f = 1770$  MHz;  $\sigma = 1.363$  S/m;  $\epsilon_r = 41.075$ ;  $\rho = 1000$  kg/m<sup>3</sup>  
Ambient Temperature : 23.5 °C ; Liquid Temperature : 22.8 °C

DASY5 Configuration:

- Probe: EX3DV4 - SN3954; ConvF(8.65, 8.65, 8.65); Calibrated: 2018.1.31;
- Sensor-Surface: 1.4mm (Mechanical Surface Detection)
- Electronics: DAE4 Sn1210; Calibrated: 2018.5.28
- Phantom: SAM2; Type: SAM; Serial: TP-1503
- Measurement SW: DASY52, Version 52.8 (8); SEMCAD X Version 14.6.10 (7372)

**Ch132572/Area Scan (71x81x1):** Interpolated grid: dx=1.500 mm, dy=1.500 mm  
Maximum value of SAR (interpolated) = 0.0580 W/kg

**Ch132572/Zoom Scan (5x5x7)/Cube 0:** Measurement grid: dx=8mm, dy=8mm, dz=5mm  
Reference Value = 6.194 V/m; Power Drift = -0.18 dB  
Peak SAR (extrapolated) = 0.0620 W/kg  
**SAR(1 g) = 0.046 W/kg; SAR(10 g) = 0.032 W/kg**  
Maximum value of SAR (measured) = 0.0538 W/kg



**08\_LTE Band 2\_20M\_QPSK\_1RB\_0Offset\_Right Cheek\_0mm\_Ch19100**

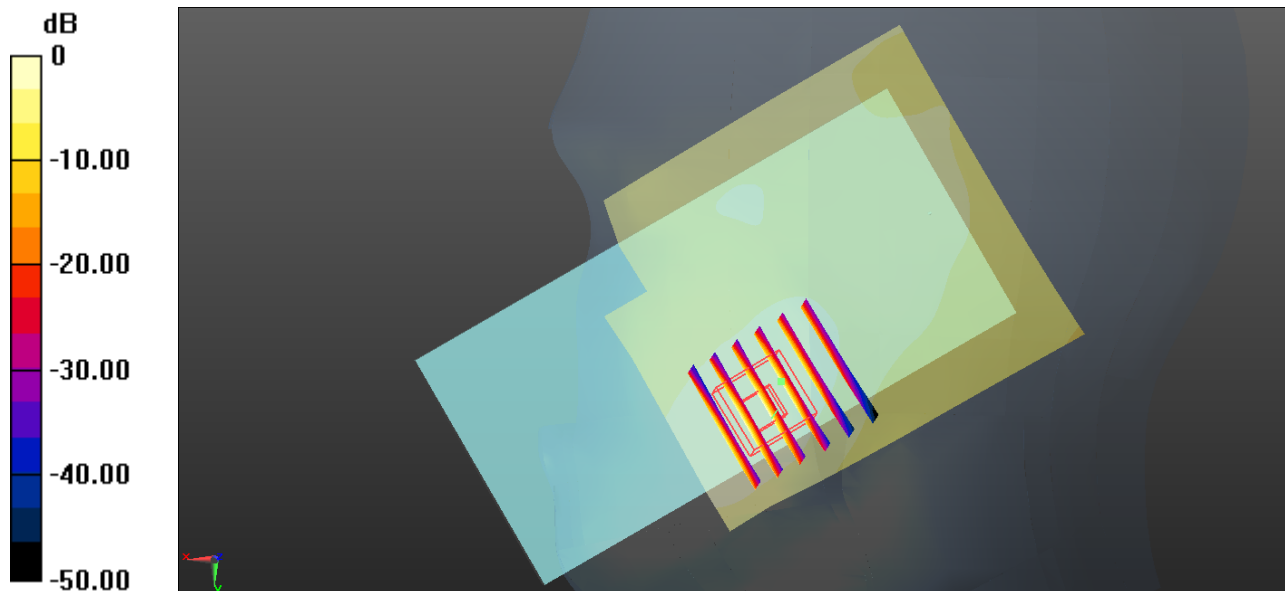
Communication System: UID 0, FDD\_LTE (0); Frequency: 1900 MHz; Duty Cycle: 1:1  
 Medium: HSL\_1900 Medium parameters used:  $f = 1900$  MHz;  $\sigma = 1.424$  S/m;  $\epsilon_r = 39.918$ ;  $\rho = 1000$  kg/m<sup>3</sup>  
 Ambient Temperature : 23.4 °C ; Liquid Temperature : 22.7 °C

**DASY5 Configuration:**

- Probe: EX3DV4 - SN3954; ConvF(8.41, 8.41, 8.41); Calibrated: 2018.1.31;
- Sensor-Surface: 1.4mm (Mechanical Surface Detection)
- Electronics: DAE4 Sn1210; Calibrated: 2018.5.28
- Phantom: SAM2; Type: SAM; Serial: TP-1503
- Measurement SW: DASY52, Version 52.8 (8); SEMCAD X Version 14.6.10 (7372)

**Ch19100/Area Scan (71x81x1):** Interpolated grid: dx=1.500 mm, dy=1.500 mm  
 Maximum value of SAR (interpolated) = 0.125 W/kg

**Ch19100/Zoom Scan (6x6x7)/Cube 0:** Measurement grid: dx=8mm, dy=8mm, dz=5mm  
 Reference Value = 8.873 V/m; Power Drift = -0.05 dB  
 Peak SAR (extrapolated) = 0.127 W/kg  
**SAR(1 g) = 0.095 W/kg; SAR(10 g) = 0.067 W/kg**  
 Maximum value of SAR (measured) = 0.114 W/kg



0 dB = 0.125 W/kg = -9.03 dBW/kg



**09\_LTE Band 7\_20M\_QPSK\_1RB\_0Offset\_Right Tilted\_0mm\_Ch20850**

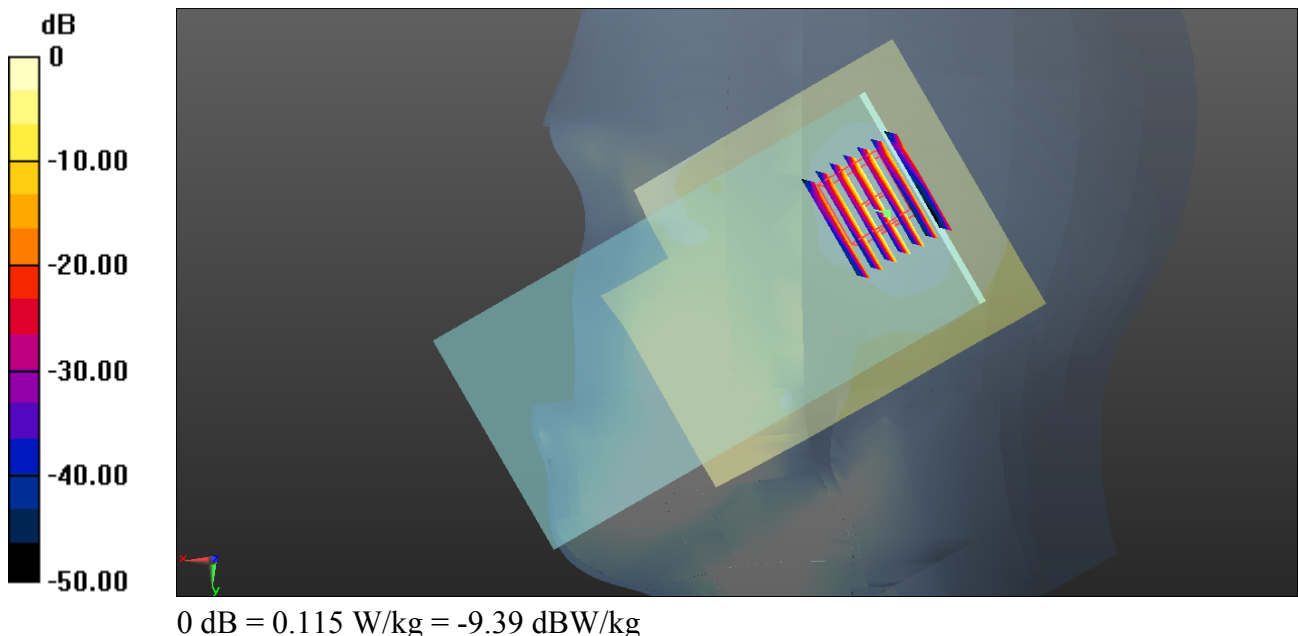
Communication System: UID 0, FDD\_LTE (0); Frequency: 2510 MHz;Duty Cycle: 1:1  
 Medium: HSL\_2600 Medium parameters used:  $f = 2510$  MHz;  $\sigma = 1.933$  S/m;  $\epsilon_r = 38.24$ ;  $\rho = 1000$  kg/m<sup>3</sup>  
 Ambient Temperature : 23.4 °C ; Liquid Temperature : 22.6 °C

**DASY5 Configuration:**

- Probe: EX3DV4 - SN3954; ConvF(7.31, 7.31, 7.31); Calibrated: 2018.1.31;
- Sensor-Surface:1.4 mm (Mechanical Surface Detection)
- Electronics: DAE4 Sn1210; Calibrated: 2018.5.28
- Phantom: SAM2; Type: SAM; Serial: TP-1503
- Measurement SW: DASY52, Version 52.8 (8); SEMCAD X Version 14.6.10 (7372)

**Ch20850/Area Scan (81x101x1):** Interpolated grid: dx=1.200 mm, dy=1.200 mm  
 Maximum value of SAR (interpolated) = 0.115 W/kg

**Ch20850/Zoom Scan (8x7x7)/Cube 0:** Measurement grid: dx=5mm, dy=5mm, dz=5mm  
 Reference Value = 7.711 V/m; Power Drift = -0.06 dB  
 Peak SAR (extrapolated) = 0.102 W/kg  
**SAR(1 g) = 0.068 W/kg; SAR(10 g) = 0.046 W/kg**  
 Maximum value of SAR (measured) = 0.0907 W/kg



### 10\_WLAN2.4GHz\_802.11b 1Mbps\_Left Cheek\_0mm\_Ch1

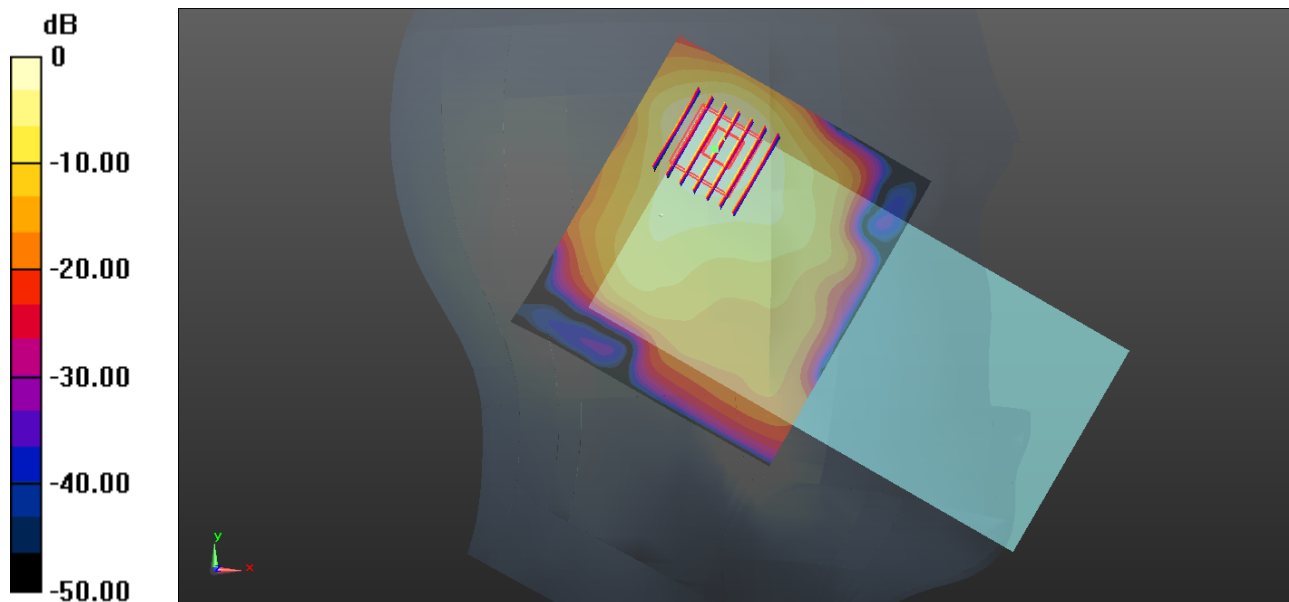
Communication System: UID 0, WIFI (0); Frequency: 2412 MHz; Duty Cycle: 1:1.025  
Medium: HSL\_2450 Medium parameters used:  $f = 2412$  MHz;  $\sigma = 1.819$  S/m;  $\epsilon_r = 38.621$ ;  $\rho = 1000$  kg/m<sup>3</sup>  
Ambient Temperature : 23.3 °C ; Liquid Temperature : 22.7 °C

#### DASY5 Configuration:

- Probe: EX3DV4 - SN3954; ConvF(7.53, 7.53, 7.53); Calibrated: 2018.1.31;
- Sensor-Surface: 1.4mm (Mechanical Surface Detection)
- Electronics: DAE4 Sn1210; Calibrated: 2018.5.28
- Phantom: SAM2; Type: SAM; Serial: TP-1503
- Measurement SW: DASY52, Version 52.8 (8); SEMCAD X Version 14.6.10 (7372)

**Ch1/Area Scan (91x81x1):** Interpolated grid: dx=1.200 mm, dy=1.200 mm  
Maximum value of SAR (interpolated) = 0.611 W/kg

**Ch1/Zoom Scan (7x7x7)/Cube 0:** Measurement grid: dx=5mm, dy=5mm, dz=5mm  
Reference Value = 17.65 V/m; Power Drift = -0.03 dB  
Peak SAR (extrapolated) = 0.711 W/kg  
**SAR(1 g) = 0.363 W/kg; SAR(10 g) = 0.202 W/kg**  
Maximum value of SAR (measured) = 0.561 W/kg



0 dB = 0.611 W/kg = -2.14 dBW/kg

### 11\_Bluetooth\_1Mbps\_Left Cheek\_0mm\_Ch39

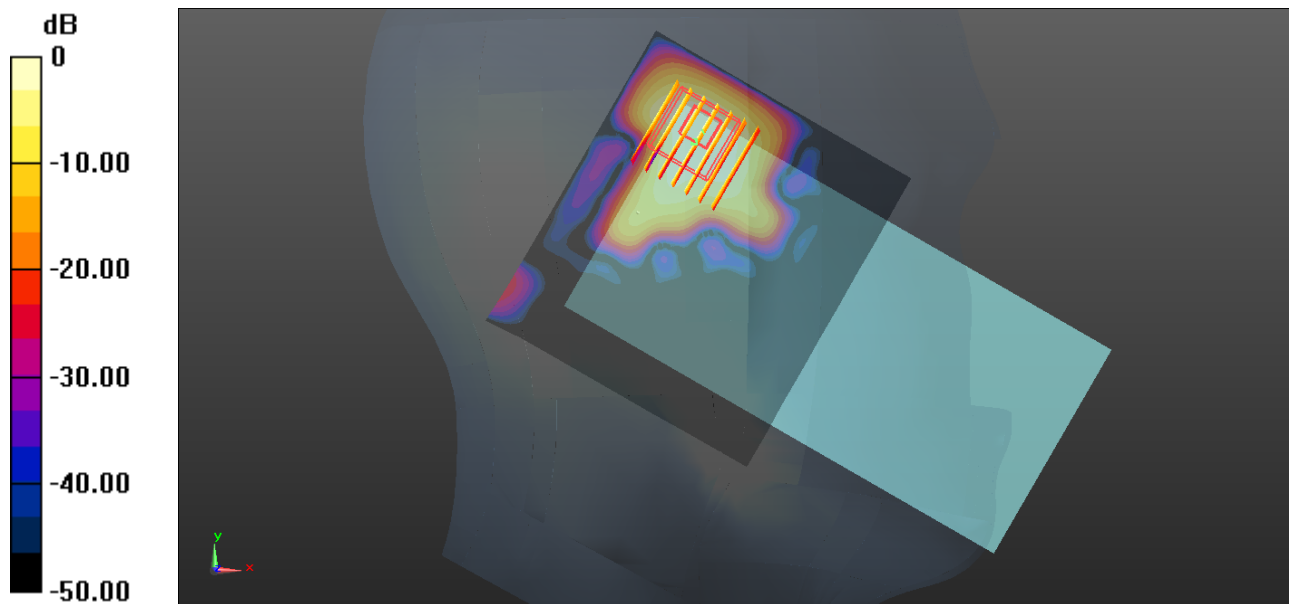
Communication System: UID 0, Bluetooth (0); Frequency: 2441 MHz; Duty Cycle: 1:1.304  
Medium: HSL\_2450 Medium parameters used:  $f = 2441$  MHz;  $\sigma = 1.853$  S/m;  $\epsilon_r = 38.506$ ;  $\rho = 1000$  kg/m<sup>3</sup>  
Ambient Temperature : 23.3 °C; Liquid Temperature : 22.7 °C

#### DASY5 Configuration:

- Probe: EX3DV4 - SN3954; ConvF(7.53, 7.53, 7.53); Calibrated: 2018.1.31;
- Sensor-Surface: 1.4mm (Mechanical Surface Detection)
- Electronics: DAE4 Sn1210; Calibrated: 2018.5.28
- Phantom: SAM2; Type: SAM; Serial: TP-1503
- Measurement SW: DASY52, Version 52.8 (8); SEMCAD X Version 14.6.10 (7372)

**Ch39/Area Scan (91x81x1):** Interpolated grid: dx=1.200 mm, dy=1.200 mm  
Maximum value of SAR (interpolated) = 0.0787 W/kg

**Ch39/Zoom Scan (7x7x7)/Cube 0:** Measurement grid: dx=5mm, dy=5mm, dz=5mm  
Reference Value = 5.266 V/m; Power Drift = -0.14 dB  
Peak SAR (extrapolated) = 0.102 W/kg  
**SAR(1 g) = 0.034 W/kg; SAR(10 g) = 0.015 W/kg**  
Maximum value of SAR (measured) = 0.0582 W/kg



0 dB = 0.0787 W/kg = -11.04 dBW/kg

### 12\_GSM850\_GPRS (4 Tx slots)\_Back\_5mm\_Ch251

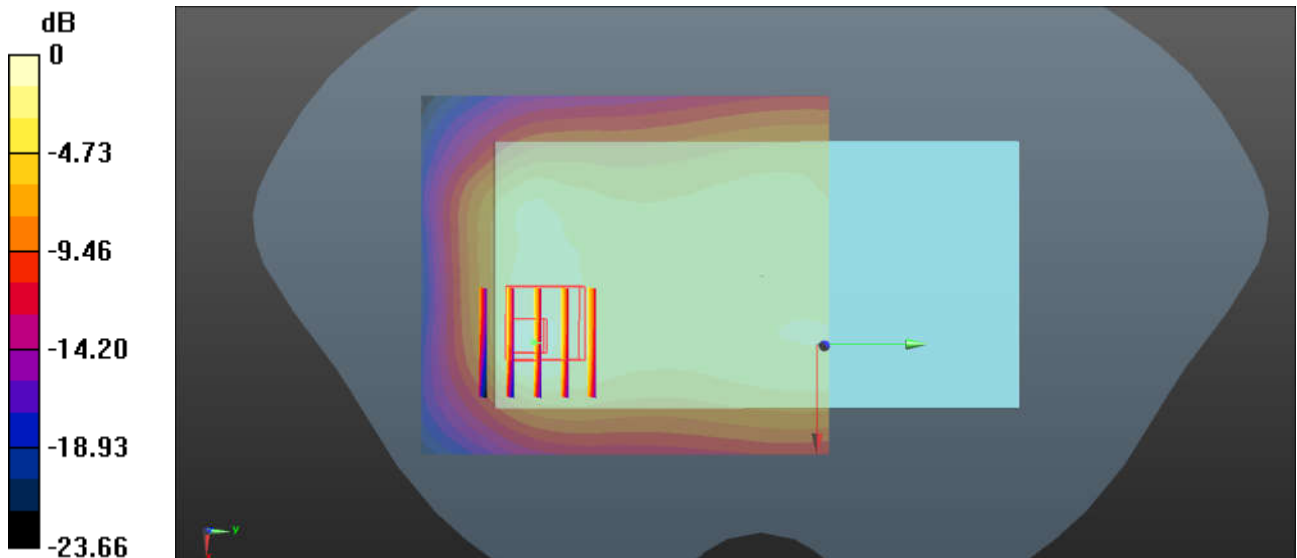
Communication System: UID 0, GSM850 (0); Frequency: 848.8 MHz; Duty Cycle: 1:2.08  
Medium: MSL\_850 Medium parameters used:  $f = 848.8$  MHz;  $\sigma = 1.003$  S/m;  $\epsilon_r = 55.128$ ;  $\rho = 1000$  kg/m<sup>3</sup>  
Ambient Temperature : 23.4 °C; Liquid Temperature : 22.7 °C

#### DASY5 Configuration:

- Probe: EX3DV4 - SN3857; ConvF(9.49, 9.49, 9.49); Calibrated: 2018.5.31
- Sensor-Surface: 1.4mm (Mechanical Surface Detection)
- Electronics: DAE4 Sn1358; Calibrated: 2018.4.19
- Phantom: SAM1; Type: SAM; Serial: TP-1697
- Measurement SW: DASY52, Version 52.10 (1); SEMCAD X Version 14.6.11 (7439)

**Ch251/Area Scan (71x81x1):** Interpolated grid: dx=1.500 mm, dy=1.500 mm  
Maximum value of SAR (interpolated) = 0.769 W/kg

**Ch251/Zoom Scan (5x5x7)/Cube 0:** Measurement grid: dx=8mm, dy=8mm, dz=5mm  
Reference Value = 25.91 V/m; Power Drift = -0.14 dB  
Peak SAR (extrapolated) = 0.816 W/kg  
**SAR(1 g) = 0.420 W/kg; SAR(10 g) = 0.257 W/kg**  
Maximum value of SAR (measured) = 0.618 W/kg



0 dB = 0.769 W/kg = -1.14 dBW/kg

### 13\_GSM1900\_GPRS 4 Tx slots\_Bottom Side\_5mm\_Ch810

Communication System: UID 0, GPRS/EDGE (4 Tx slots) (0); Frequency: 1909.8 MHz; Duty Cycle: 1:2.0797

Medium: MSL\_1900 Medium parameters used:  $f = 1909.8$  MHz;  $\sigma = 1.53$  S/m;  $\epsilon_r = 53.868$ ;  $\rho = 1000$  kg/m<sup>3</sup>

Ambient Temperature : 23.4 °C ; Liquid Temperature : 22.7 °C

#### DASY5 Configuration:

- Probe: EX3DV4 - SN3954; ConvF(8.03, 8.03, 8.03); Calibrated: 2018.1.31;
- Sensor-Surface: 1.4mm (Mechanical Surface Detection)
- Electronics: DAE4 Sn1210; Calibrated: 2018.5.28
- Phantom: SAM2; Type: SAM; Serial: TP-1503
- Measurement SW: DASY52, Version 52.8 (8); SEMCAD X Version 14.6.10 (7372)

**Ch810/Area Scan (41x71x1):** Interpolated grid: dx=1.500 mm, dy=1.500 mm

Maximum value of SAR (interpolated) = 1.72 W/kg

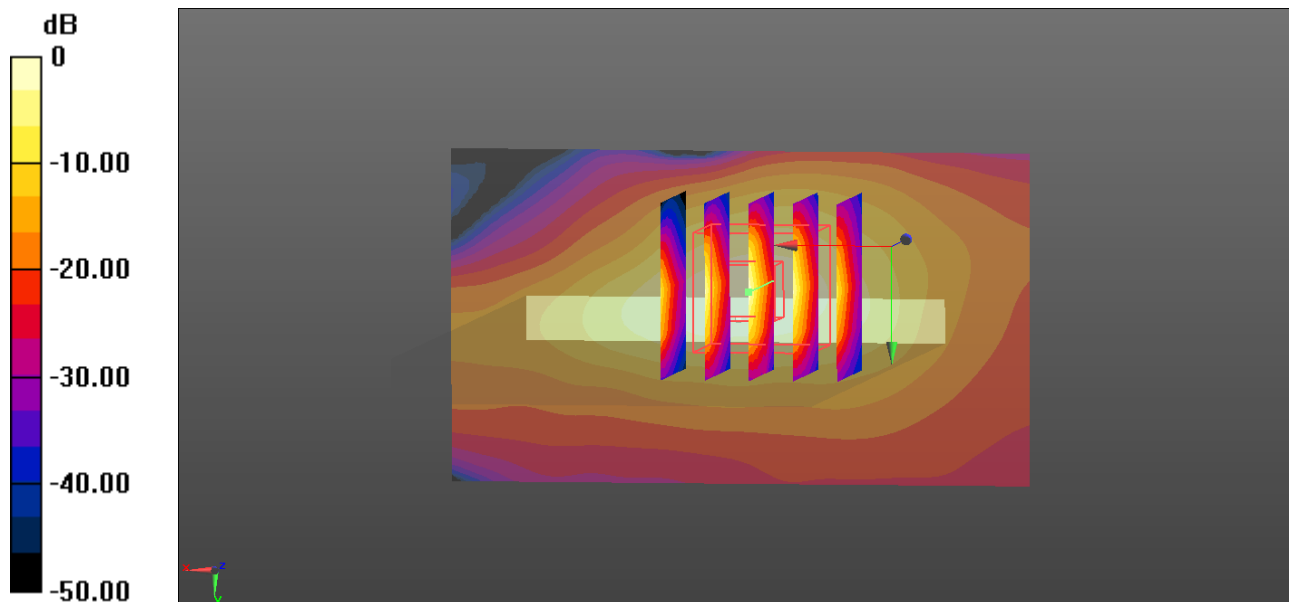
**Ch810/Zoom Scan (5x5x7)/Cube 0:** Measurement grid: dx=8mm, dy=8mm, dz=5mm

Reference Value = 36.63 V/m; Power Drift = -0.04 dB

Peak SAR (extrapolated) = 1.93 W/kg

**SAR(1 g) = 1.22 W/kg; SAR(10 g) = 0.614 W/kg**

Maximum value of SAR (measured) = 1.76 W/kg



0 dB = 1.72 W/kg = 2.36 dBW/kg

**14\_WCDMA Band V\_RMC 12.2Kbps\_Left Side\_5mm\_Ch4132**

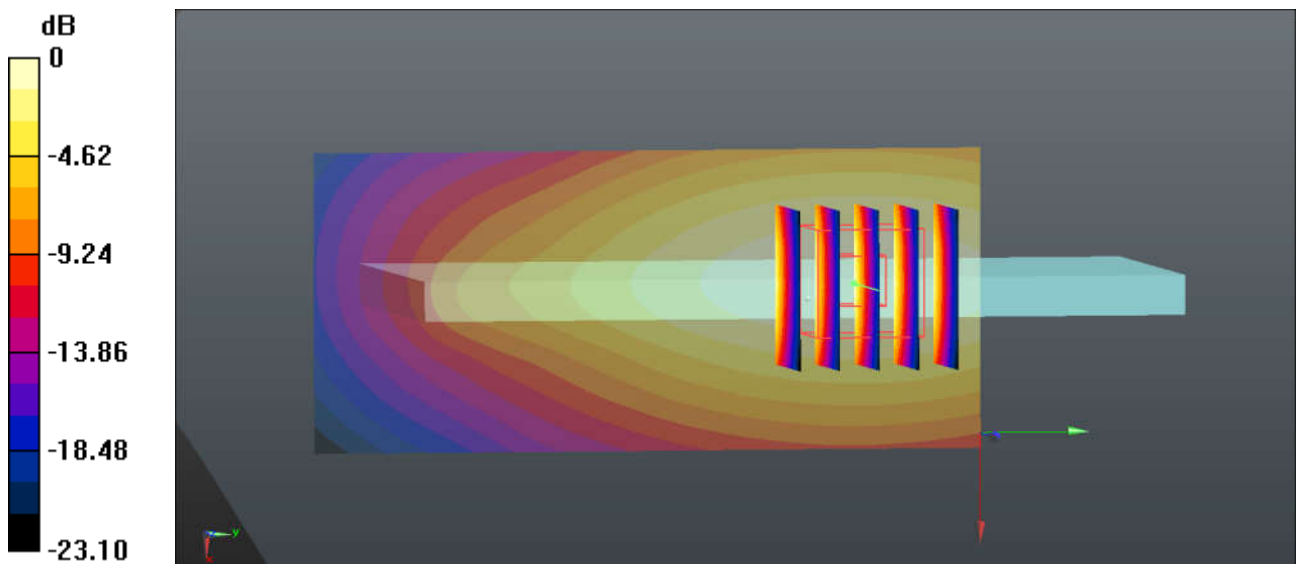
Communication System: UID 0, WCDMA (0); Frequency: 826.4 MHz; Duty Cycle: 1:1  
 Medium: MSL\_850 Medium parameters used (interpolated):  $f = 826.4 \text{ MHz}$ ;  $\sigma = 0.982 \text{ S/m}$ ;  $\epsilon_r = 55.371$ ;  $\rho = 1000 \text{ kg/m}^3$   
 Ambient Temperature : 23.4 °C; Liquid Temperature : 22.7 °C

**DASY5 Configuration:**

- Probe: EX3DV4 - SN3857; ConvF(9.49, 9.49, 9.49); Calibrated: 2018.5.31
- Sensor-Surface: 1.4mm (Mechanical Surface Detection)
- Electronics: DAE4 Sn1358; Calibrated: 2018.4.19
- Phantom: SAM1; Type: SAM; Serial: TP-1697
- Measurement SW: DASY52, Version 52.10 (1); SEMCAD X Version 14.6.11 (7439)

**Ch4132/Area Scan (41x91x1):** Interpolated grid:  $dx=1.500 \text{ mm}$ ,  $dy=1.500 \text{ mm}$   
 Maximum value of SAR (interpolated) = 0.567 W/kg

**Ch4132/Zoom Scan (5x5x7)/Cube 0:** Measurement grid:  $dx=8\text{mm}$ ,  $dy=8\text{mm}$ ,  $dz=5\text{mm}$   
 Reference Value = 25.11 V/m; Power Drift = -0.02 dB  
 Peak SAR (extrapolated) = 0.662 W/kg  
**SAR(1 g) = 0.423 W/kg; SAR(10 g) = 0.279 W/kg**  
 Maximum value of SAR (measured) = 0.576 W/kg



0 dB = 0.567 W/kg = -2.46 dBW/kg

### 15\_WCDMA Band IV\_RMC 12.2Kbps\_Bottom Side\_5mm\_Ch1513

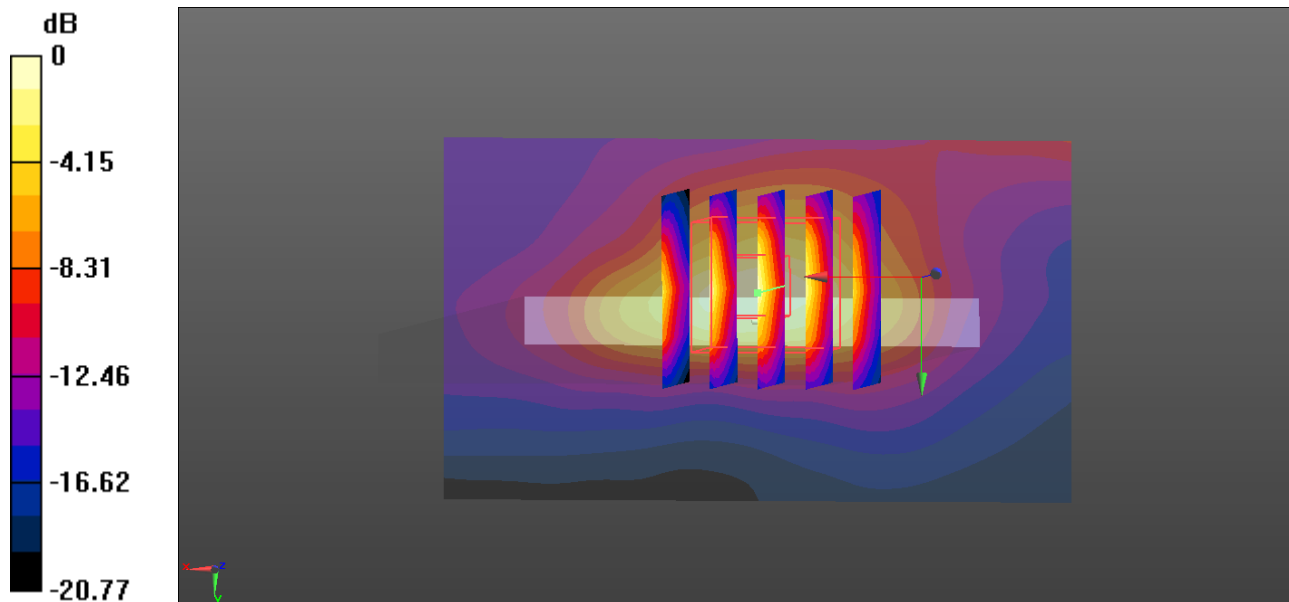
Communication System: UID 0, UMTS (0); Frequency: 1752.6 MHz; Duty Cycle: 1:1  
Medium: MSL\_1750 Medium parameters used:  $f = 1752.6$  MHz;  $\sigma = 1.448$  S/m;  $\epsilon_r = 54.466$ ;  $\rho = 1000$  kg/m<sup>3</sup>  
Ambient Temperature : 23.3 °C ; Liquid Temperature : 22.6 °C

#### DASY5 Configuration:

- Probe: EX3DV4 - SN3954; ConvF(8.31, 8.31, 8.31); Calibrated: 2018.1.31;
- Sensor-Surface: 1.4mm (Mechanical Surface Detection)
- Electronics: DAE4 Sn1210; Calibrated: 2018.5.28
- Phantom: SAM2; Type: SAM; Serial: TP-1503
- Measurement SW: DASY52, Version 52.8 (8); SEMCAD X Version 14.6.10 (7372)

**Ch1513/Area Scan (41x71x1):** Interpolated grid: dx=1.500 mm, dy=1.500 mm  
Maximum value of SAR (interpolated) = 1.65 W/kg

**Ch1513/Zoom Scan (5x5x7)/Cube 0:** Measurement grid: dx=8mm, dy=8mm, dz=5mm  
Reference Value = 37.01 V/m; Power Drift = -0.02 dB  
Peak SAR (extrapolated) = 1.88 W/kg  
**SAR(1 g) = 1.19 W/kg; SAR(10 g) = 0.622 W/kg**  
Maximum value of SAR (measured) = 1.67 W/kg



0 dB = 1.65 W/kg = 2.17 dBW/kg

### 16\_WCDMA Band II\_RMC 12.2Kbps\_Bottom Side\_5mm\_Ch9538

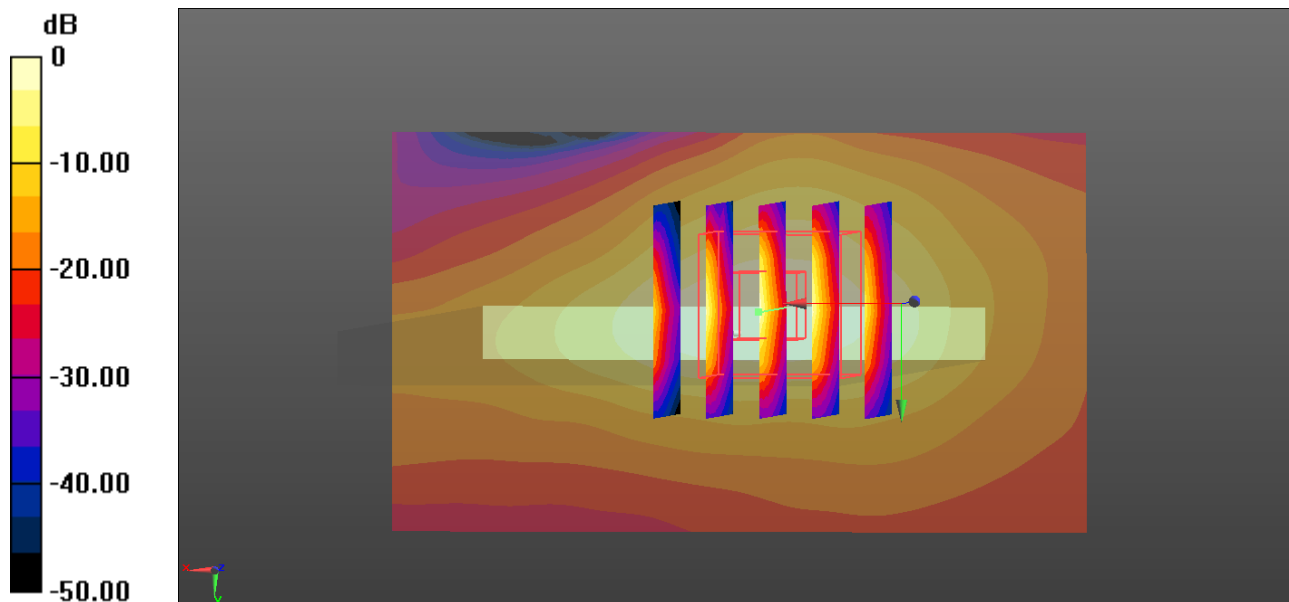
Communication System: UID 0, UMTS (0); Frequency: 1907.6 MHz; Duty Cycle: 1:1  
Medium: MSL\_1900 Medium parameters used:  $f = 1907.6 \text{ MHz}$ ;  $\sigma = 1.528 \text{ S/m}$ ;  $\epsilon_r = 53.878$ ;  $\rho = 1000 \text{ kg/m}^3$   
Ambient Temperature :  $23.4 \text{ }^\circ\text{C}$ ; Liquid Temperature :  $22.7 \text{ }^\circ\text{C}$

#### DASY5 Configuration:

- Probe: EX3DV4 - SN3954; ConvF(8.03, 8.03, 8.03); Calibrated: 2018.1.31;
- Sensor-Surface: 1.4mm (Mechanical Surface Detection)
- Electronics: DAE4 Sn1210; Calibrated: 2018.5.28
- Phantom: SAM2; Type: SAM; Serial: TP-1503
- Measurement SW: DASY52, Version 52.8 (8); SEMCAD X Version 14.6.10 (7372)

**Ch9538/Area Scan (41x71x1):** Interpolated grid:  $dx=1.500 \text{ mm}$ ,  $dy=1.500 \text{ mm}$   
Maximum value of SAR (interpolated) =  $1.65 \text{ W/kg}$

**Ch9538/Zoom Scan (5x5x7)/Cube 0:** Measurement grid:  $dx=8\text{mm}$ ,  $dy=8\text{mm}$ ,  $dz=5\text{mm}$   
Reference Value =  $36.88 \text{ V/m}$ ; Power Drift =  $-0.04 \text{ dB}$   
Peak SAR (extrapolated) =  $1.98 \text{ W/kg}$   
**SAR(1 g) =  $1.24 \text{ W/kg}$ ; SAR(10 g) =  $0.641 \text{ W/kg}$**   
Maximum value of SAR (measured) =  $1.76 \text{ W/kg}$



0 dB =  $1.65 \text{ W/kg} = 2.17 \text{ dBW/kg}$



### 17\_LTE Band 5\_10M\_QPSK\_1RB\_49Offset\_Left Side\_5mm\_Ch20525

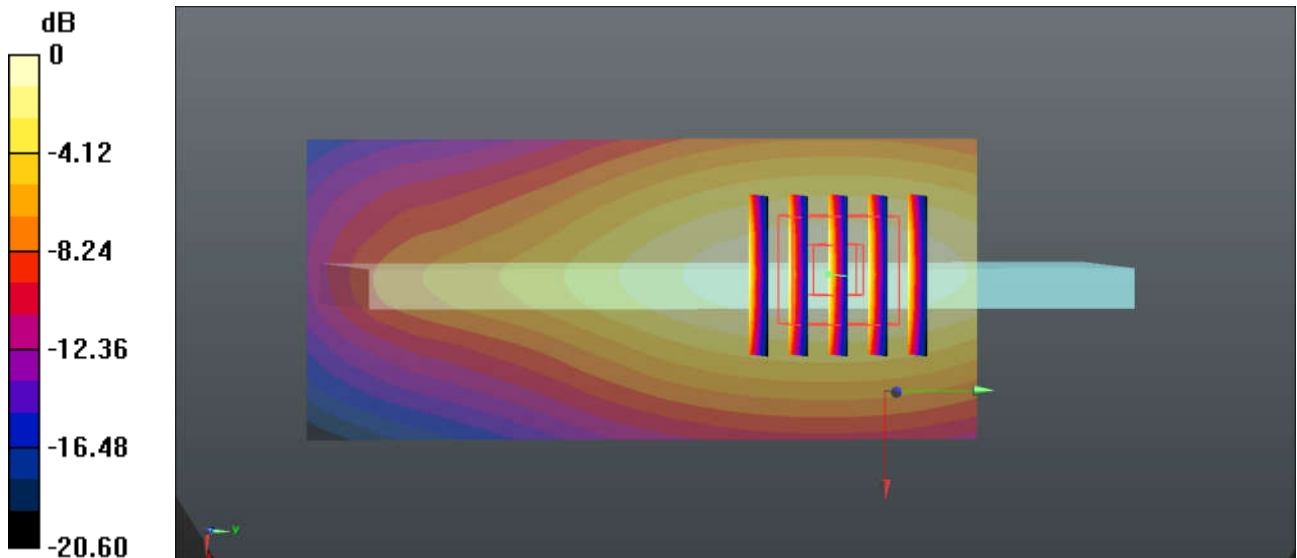
Communication System: UID 0, LTE (0); Frequency: 836.5 MHz; Duty Cycle: 1:1  
Medium: MSL\_850 Medium parameters used (interpolated):  $f = 836.5$  MHz;  $\sigma = 0.991$  S/m;  $\epsilon_r = 55.26$ ;  
 $\rho = 1000$  kg/m<sup>3</sup>  
Ambient Temperature : 23.4 °C; Liquid Temperature : 22.7 °C

#### DASY5 Configuration:

- Probe: EX3DV4 - SN3857; ConvF(9.49, 9.49, 9.49); Calibrated: 2018.5.31
- Sensor-Surface: 1.4mm (Mechanical Surface Detection)
- Electronics: DAE4 Sn1358; Calibrated: 2018.4.19
- Phantom: SAM1; Type: SAM; Serial: TP-1697
- Measurement SW: DASY52, Version 52.10 (1); SEMCAD X Version 14.6.11 (7439)

**Ch20525/Area Scan (41x91x1):** Interpolated grid: dx=1.500 mm, dy=1.500 mm  
Maximum value of SAR (interpolated) = 0.601 W/kg

**Ch20525/Zoom Scan (5x5x7)/Cube 0:** Measurement grid: dx=8mm, dy=8mm, dz=5mm  
Reference Value = 25.77 V/m; Power Drift = -0.07 dB  
Peak SAR (extrapolated) = 0.707 W/kg  
**SAR(1 g) = 0.443 W/kg; SAR(10 g) = 0.289 W/kg**  
Maximum value of SAR (measured) = 0.612 W/kg



0 dB = 0.601 W/kg = -2.21 dBW/kg

### 18\_LTE Band 66\_20M\_QPSK\_1RB\_99Offset\_Bottom Side\_5mm\_Ch132572

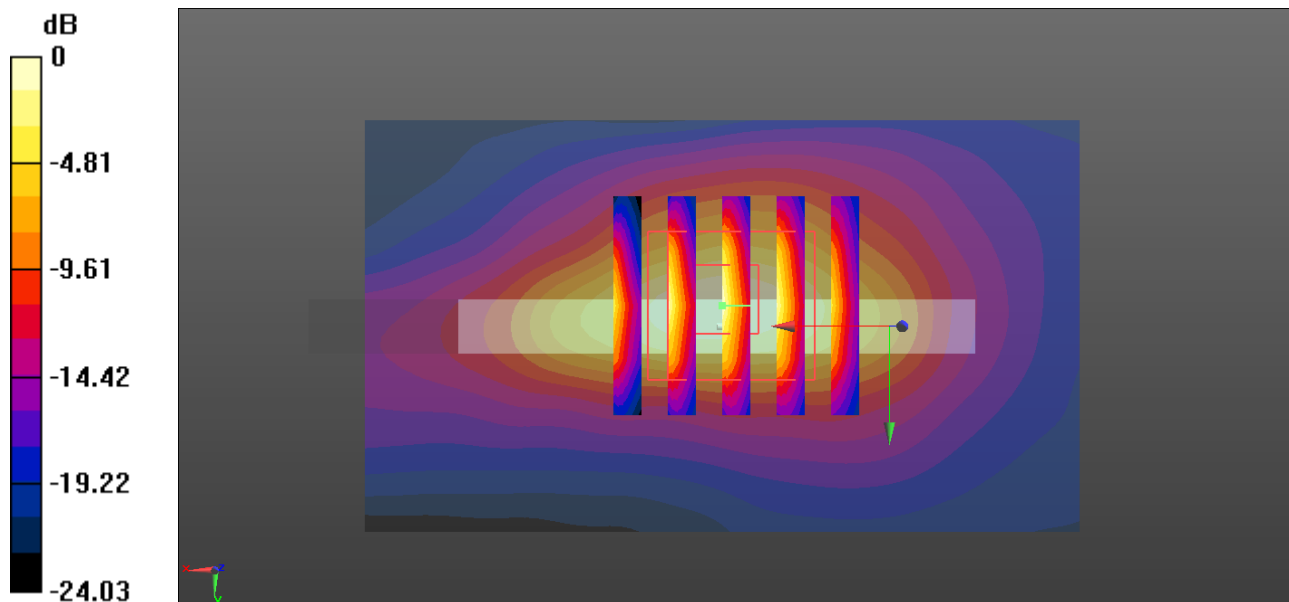
Communication System: UID 0, FDD\_LTE (0); Frequency: 1770 MHz; Duty Cycle: 1:1  
Medium: MSL\_1750 Medium parameters used:  $f = 1770$  MHz;  $\sigma = 1.464$  S/m;  $\epsilon_r = 54.418$ ;  $\rho = 1000$  kg/m<sup>3</sup>  
Ambient Temperature : 23.3 °C ; Liquid Temperature : 22.6 °C

#### DASY5 Configuration:

- Probe: EX3DV4 - SN3954; ConvF(8.31, 8.31, 8.31); Calibrated: 2018.1.31;
- Sensor-Surface: 1.4mm (Mechanical Surface Detection)
- Electronics: DAE4 Sn1210; Calibrated: 2018.5.28
- Phantom: SAM2; Type: SAM; Serial: TP-1503
- Measurement SW: DASY52, Version 52.8 (8); SEMCAD X Version 14.6.10 (7372)

**Ch132572/Area Scan (41x71x1):** Interpolated grid: dx=1.500 mm, dy=1.500 mm  
Maximum value of SAR (interpolated) = 1.75 W/kg

**Ch132572/Zoom Scan (5x5x7)/Cube 0:** Measurement grid: dx=8mm, dy=8mm, dz=5mm  
Reference Value = 37.68 V/m; Power Drift = -0.03 dB  
Peak SAR (extrapolated) = 1.92 W/kg  
**SAR(1 g) = 1.24 W/kg; SAR(10 g) = 0.648 W/kg**  
Maximum value of SAR (measured) = 1.73 W/kg



0 dB = 1.75 W/kg = 2.43 dBW/kg

**19\_LTE Band 2\_20M\_QPSK\_100RB\_0Offset\_Bottom Side\_5mm\_Ch19100**

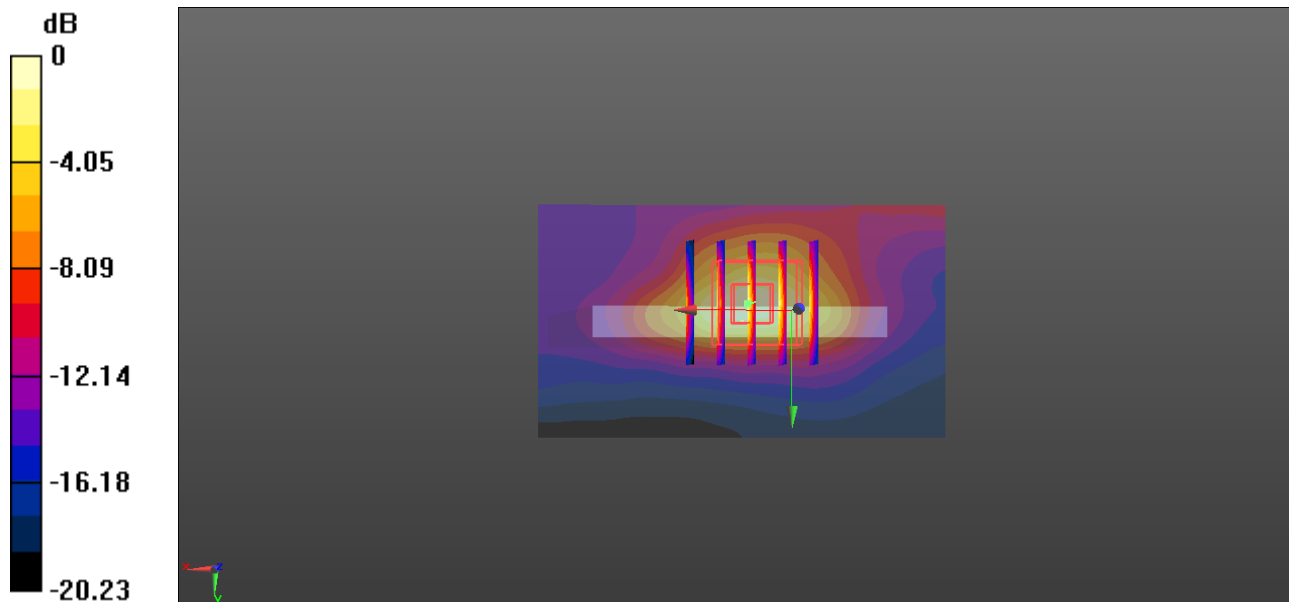
Communication System: UID 0, FDD\_LTE (0); Frequency: 1900 MHz; Duty Cycle: 1:1  
 Medium: MSL\_1900 Medium parameters used:  $f = 1900$  MHz;  $\sigma = 1.519$  S/m;  $\epsilon_r = 53.914$ ;  $\rho = 1000$  kg/m<sup>3</sup>  
 Ambient Temperature : 23.4 °C ; Liquid Temperature : 22.7 °C

**DASY5 Configuration:**

- Probe: EX3DV4 - SN3954; ConvF(8.03, 8.03, 8.03); Calibrated: 2018.1.31;
- Sensor-Surface: 1.4mm (Mechanical Surface Detection)
- Electronics: DAE4 Sn1210; Calibrated: 2018.5.28
- Phantom: SAM2; Type: SAM; Serial: TP-1503
- Measurement SW: DASY52, Version 52.8 (8); SEMCAD X Version 14.6.10 (7372)

**Ch19100/Area Scan (41x71x1):** Interpolated grid: dx=1.500 mm, dy=1.500 mm  
 Maximum value of SAR (interpolated) = 1.92 W/kg

**Ch19100/Zoom Scan (5x5x7)/Cube 0:** Measurement grid: dx=8mm, dy=8mm, dz=5mm  
 Reference Value = 39.07 V/m; Power Drift = -0.08 dB  
 Peak SAR (extrapolated) = 2.09 W/kg  
**SAR(1 g) = 1.31 W/kg; SAR(10 g) = 0.683 W/kg**  
 Maximum value of SAR (measured) = 1.89 W/kg



0 dB = 1.92 W/kg = 2.83 dBW/kg

**20\_LTE Band 7\_20M\_QPSK\_1RB\_0Offset\_Back\_5mm\_Ch21350**

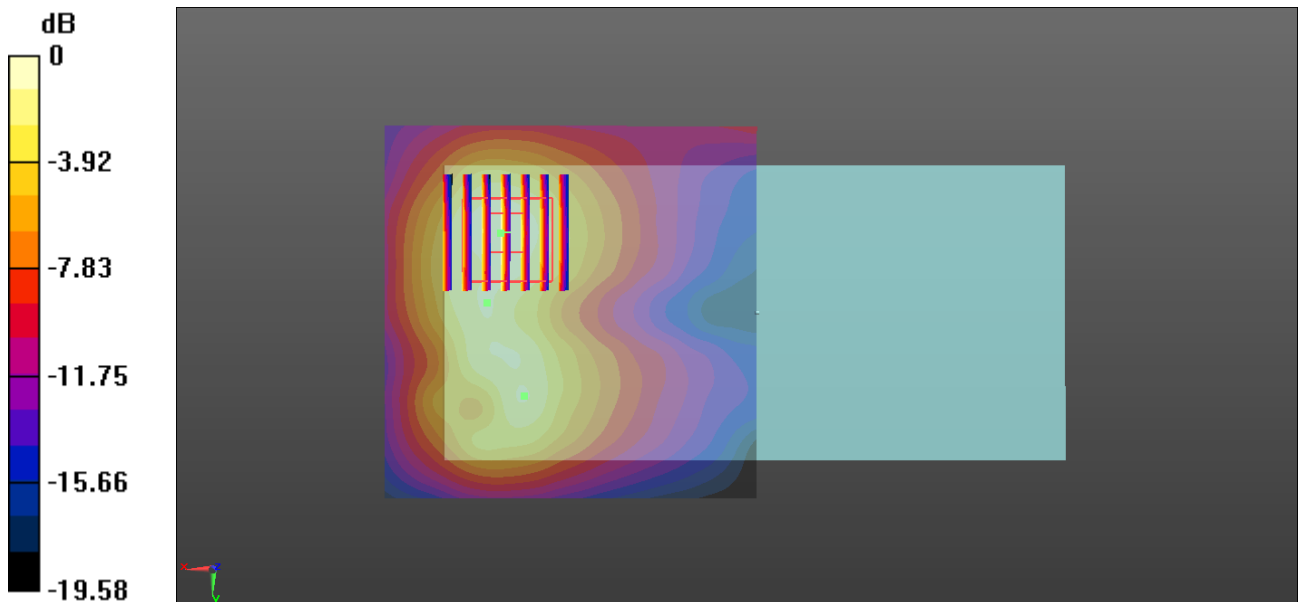
Communication System: UID 0, FDD\_LTE (0); Frequency: 2560 MHz; Duty Cycle: 1:1  
 Medium: MSL\_2600 Medium parameters used:  $f = 2560$  MHz;  $\sigma = 2.159$  S/m;  $\epsilon_r = 52.664$ ;  $\rho = 1000$  kg/m<sup>3</sup>  
 Ambient Temperature : 23.4 °C ; Liquid Temperature : 22.7 °C

**DASY5 Configuration:**

- Probe: EX3DV4 - SN3954; ConvF(6.92, 6.92, 6.92); Calibrated: 2018.1.31;
- Sensor-Surface: 1.4mm (Mechanical Surface Detection)
- Electronics: DAE4 Sn1210; Calibrated: 2018.5.28
- Phantom: SAM1; Type: SAM; Serial: TP-1697
- Measurement SW: DASY52, Version 52.8 (8); SEMCAD X Version 14.6.10 (7372)

**Ch21350/Area Scan (81x81x1):** Interpolated grid: dx=1.200 mm, dy=1.200 mm  
 Maximum value of SAR (interpolated) = 1.95 W/kg

**Ch21350/Zoom Scan (7x7x7)/Cube 0:** Measurement grid: dx=5mm, dy=5mm, dz=5mm  
 Reference Value = 30.67 V/m; Power Drift = -0.09 dB  
 Peak SAR (extrapolated) = 2.38 W/kg  
**SAR(1 g) = 1.32 W/kg; SAR(10 g) = 0.715 W/kg**  
 Maximum value of SAR (measured) = 2.01 W/kg



0 dB = 1.95 W/kg = 2.90 dBW/kg

### 21\_WLAN2.4GHz\_802.11b 1Mbps\_Back\_5mm\_Ch1

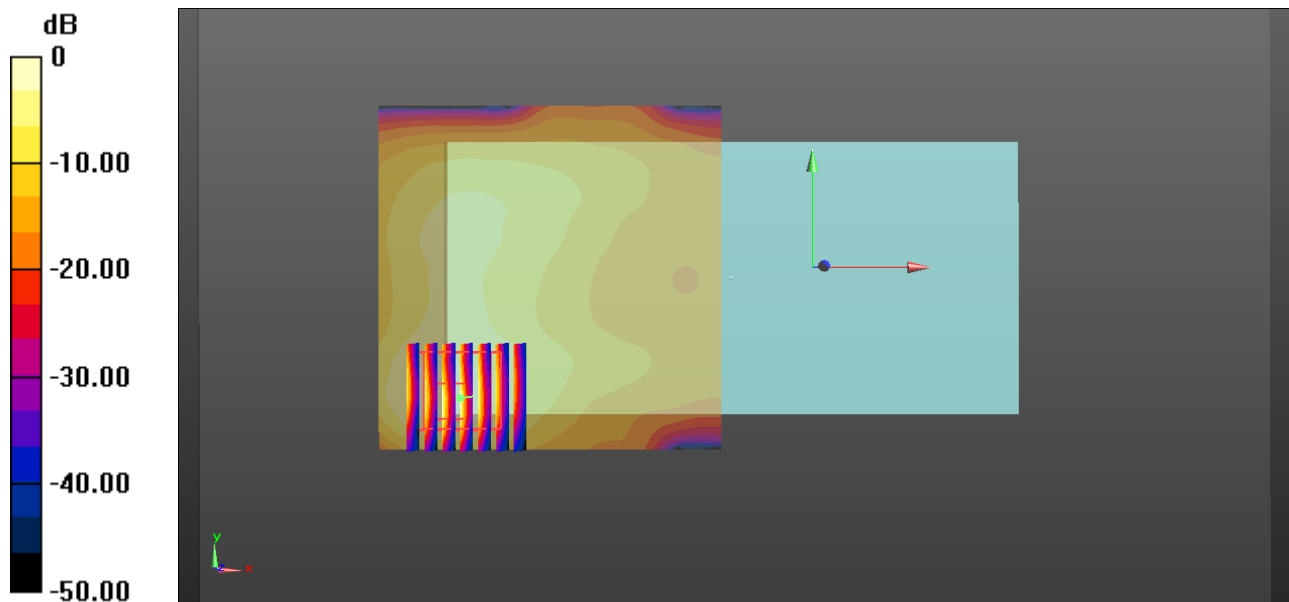
Communication System: UID 0, WIFI (0); Frequency: 2412 MHz; Duty Cycle: 1:1.025  
Medium: MSL\_2450 Medium parameters used:  $f = 2412$  MHz;  $\sigma = 1.95$  S/m;  $\epsilon_r = 53.257$ ;  $\rho = 1000$  kg/m<sup>3</sup>  
Ambient Temperature : 23.4 °C ; Liquid Temperature : 22.7 °C

#### DASY5 Configuration:

- Probe: EX3DV4 - SN3954; ConvF(7.53, 7.53, 7.53); Calibrated: 2018.1.31;
- Sensor-Surface: 1.4mm (Mechanical Surface Detection)
- Electronics: DAE4 Sn1210; Calibrated: 2018.5.28
- Phantom: SAM2; Type: SAM; Serial: TP-1503
- Measurement SW: DASY52, Version 52.8 (8); SEMCAD X Version 14.6.10 (7372)

**Ch1/Area Scan (81x81x1):** Interpolated grid: dx=1.200 mm, dy=1.200 mm  
Maximum value of SAR (interpolated) = 0.377 W/kg

**Ch1/Zoom Scan (7x7x7)/Cube 0:** Measurement grid: dx=5mm, dy=5mm, dz=5mm  
Reference Value = 13.72 V/m; Power Drift = -0.04 dB  
Peak SAR (extrapolated) = 0.412 W/kg  
**SAR(1 g) = 0.211 W/kg; SAR(10 g) = 0.103 W/kg**  
Maximum value of SAR (measured) = 0.340 W/kg



0 dB = 0.377 W/kg = -4.24 dBW/kg

## 22\_Bluetooth\_1Mbps\_Back\_5mm\_Ch39

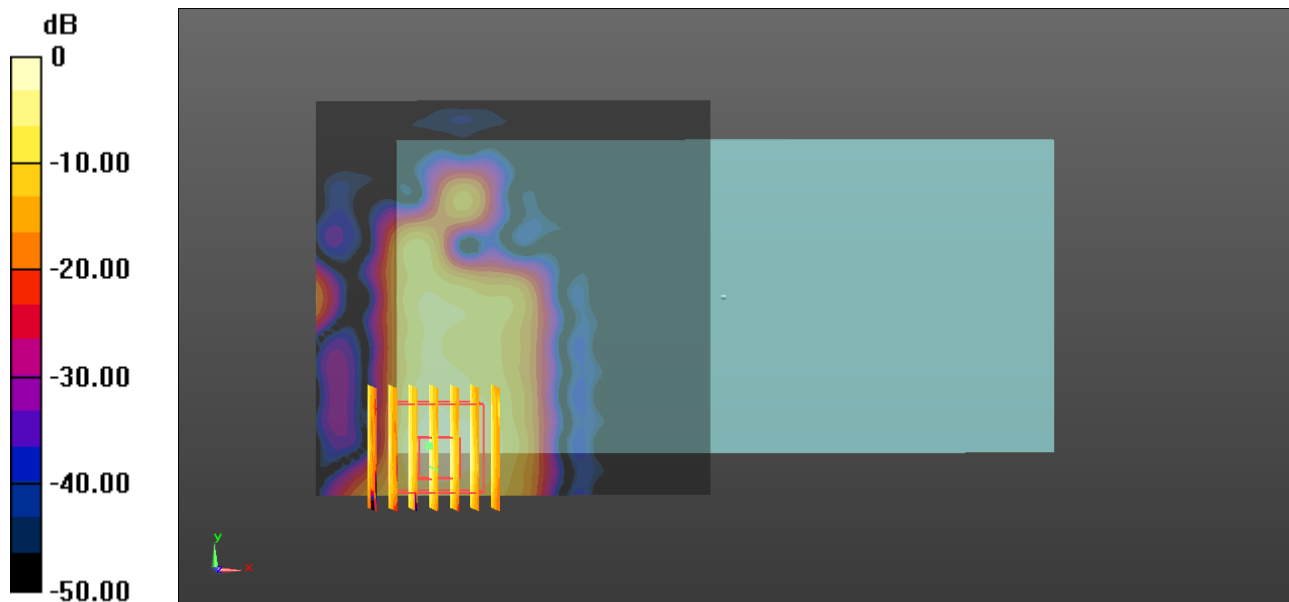
Communication System: UID 0, Bluetooth (0); Frequency: 2441 MHz; Duty Cycle: 1:1.304  
Medium: MSL\_2450 Medium parameters used:  $f = 2441$  MHz;  $\sigma = 1.991$  S/m;  $\epsilon_r = 53.144$ ;  $\rho = 1000$  kg/m<sup>3</sup>  
Ambient Temperature : 23.4 °C ; Liquid Temperature : 22.7 °C

### DASY5 Configuration:

- Probe: EX3DV4 - SN3954; ConvF(7.53, 7.53, 7.53); Calibrated: 2018.1.31;
- Sensor-Surface: 1.4mm (Mechanical Surface Detection)
- Electronics: DAE4 Sn1210; Calibrated: 2018.5.28
- Phantom: SAM2; Type: SAM; Serial: TP-1503
- Measurement SW: DASY52, Version 52.8 (8); SEMCAD X Version 14.6.10 (7372)

**Ch39/Area Scan (81x81x1):** Interpolated grid: dx=1.200 mm, dy=1.200 mm  
Maximum value of SAR (interpolated) = 0.0566 W/kg

**Ch39/Zoom Scan (7x7x7)/Cube 0:** Measurement grid: dx=5mm, dy=5mm, dz=5mm  
Reference Value = 4.178 V/m; Power Drift = -0.05 dB  
Peak SAR (extrapolated) = 0.0530 W/kg  
**SAR(1 g) = 0.022 W/kg; SAR(10 g) = 0.00801 W/kg**  
Maximum value of SAR (measured) = 0.0409 W/kg



0 dB = 0.0566 W/kg = -12.47 dBW/kg

### 23\_GSM850\_GPRS (4 Tx slots)\_Back\_5mm\_Ch251

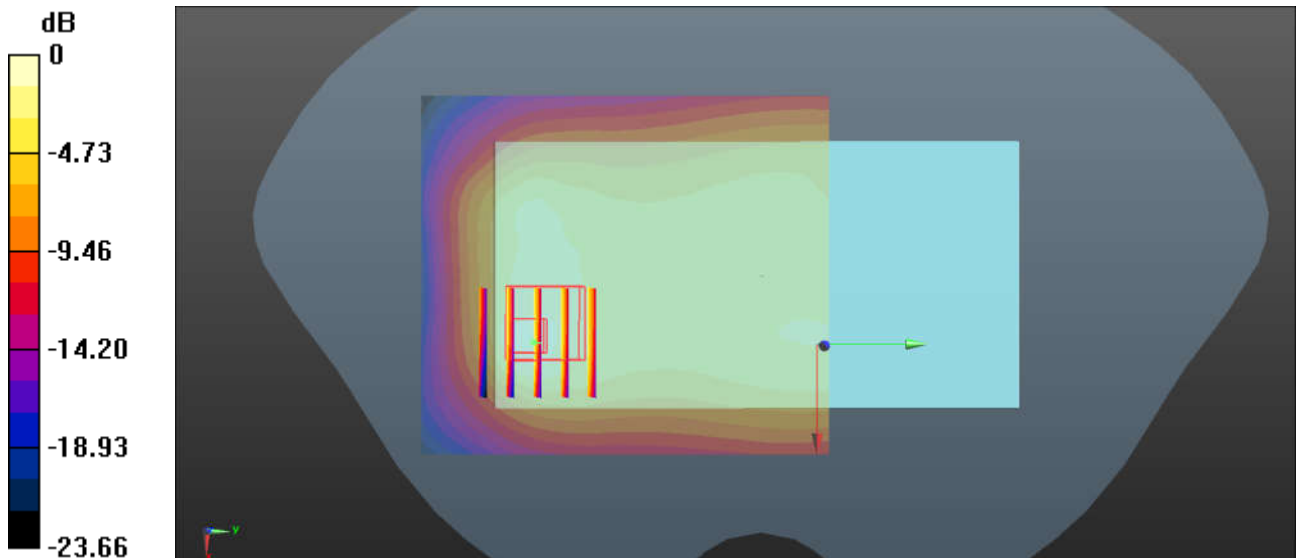
Communication System: UID 0, GSM850 (0); Frequency: 848.8 MHz; Duty Cycle: 1:2.08  
Medium: MSL\_850 Medium parameters used:  $f = 848.8$  MHz;  $\sigma = 1.003$  S/m;  $\epsilon_r = 55.128$ ;  $\rho = 1000$  kg/m<sup>3</sup>  
Ambient Temperature : 23.4 °C; Liquid Temperature : 22.7 °C

#### DASY5 Configuration:

- Probe: EX3DV4 - SN3857; ConvF(9.49, 9.49, 9.49); Calibrated: 2018.5.31
- Sensor-Surface: 1.4mm (Mechanical Surface Detection)
- Electronics: DAE4 Sn1358; Calibrated: 2018.4.19
- Phantom: SAM1; Type: SAM; Serial: TP-1697
- Measurement SW: DASY52, Version 52.10 (1); SEMCAD X Version 14.6.11 (7439)

**Ch251/Area Scan (71x81x1):** Interpolated grid: dx=1.500 mm, dy=1.500 mm  
Maximum value of SAR (interpolated) = 0.769 W/kg

**Ch251/Zoom Scan (5x5x7)/Cube 0:** Measurement grid: dx=8mm, dy=8mm, dz=5mm  
Reference Value = 25.91 V/m; Power Drift = -0.14 dB  
Peak SAR (extrapolated) = 0.816 W/kg  
**SAR(1 g) = 0.420 W/kg; SAR(10 g) = 0.257 W/kg**  
Maximum value of SAR (measured) = 0.618 W/kg



0 dB = 0.769 W/kg = -1.14 dBW/kg

### 24\_GSM1900\_GPRS 4 Tx slots\_Back\_5mm\_Headset\_Ch810

Communication System: UID 0, GPRS/EDGE (4 Tx slots) (0); Frequency: 1909.8 MHz; Duty Cycle: 1:2.08

Medium: MSL\_1900 Medium parameters used:  $f = 1909.8$  MHz;  $\sigma = 1.53$  S/m;  $\epsilon_r = 53.868$ ;  $\rho = 1000$  kg/m<sup>3</sup>

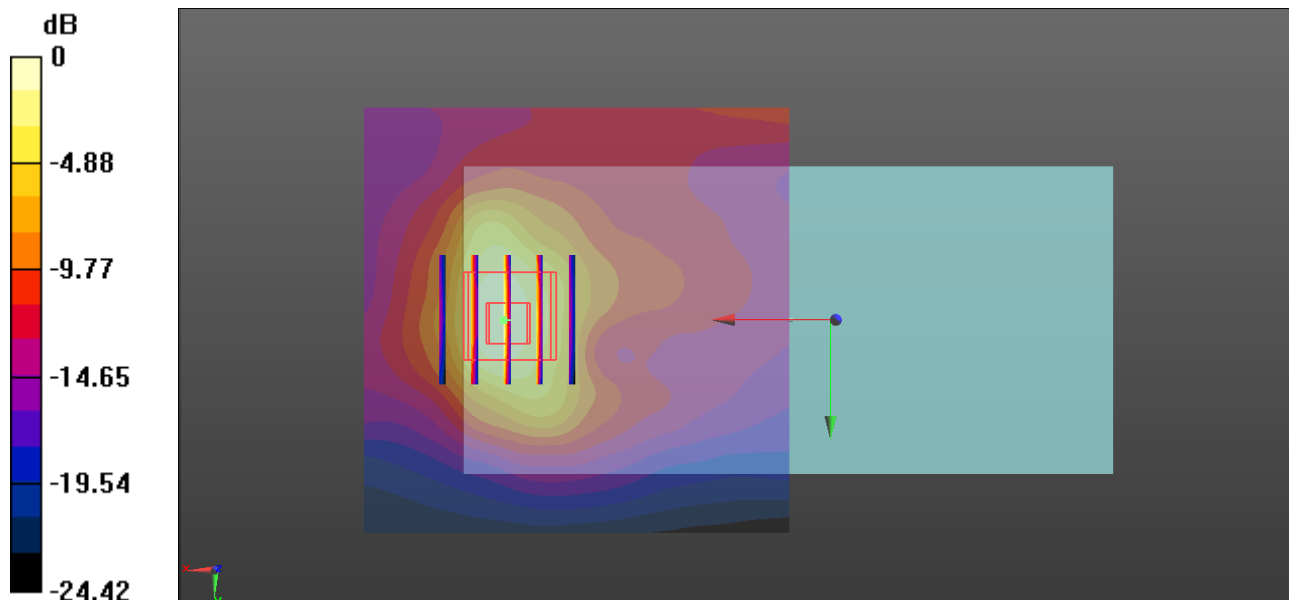
Ambient Temperature : 23.4 °C ; Liquid Temperature : 22.7 °C

#### DASY5 Configuration:

- Probe: EX3DV4 - SN3954; ConvF(8.03, 8.03, 8.03); Calibrated: 2018.1.31;
- Sensor-Surface: 1.4mm (Mechanical Surface Detection)
- Electronics: DAE4 Sn1210; Calibrated: 2018.5.28
- Phantom: SAM2; Type: SAM; Serial: TP-1503
- Measurement SW: DASY52, Version 52.8 (8); SEMCAD X Version 14.6.10 (7372)

**Ch810/Area Scan (71x71x1):** Interpolated grid: dx=1.500 mm, dy=1.500 mm  
Maximum value of SAR (interpolated) = 1.45 W/kg

**Ch810/Zoom Scan (5x5x7)/Cube 0:** Measurement grid: dx=8mm, dy=8mm, dz=5mm  
Reference Value = 33.26 V/m; Power Drift = -0.02 dB  
Peak SAR (extrapolated) = 1.94 W/kg  
**SAR(1 g) = 1.19 W/kg; SAR(10 g) = 0.642 W/kg**  
Maximum value of SAR (measured) = 1.63 W/kg



0 dB = 1.45 W/kg = 1.61 dBW/kg



### 25\_WCDMA Band V\_RMC 12.2Kbps\_Back\_5mm\_Ch4132

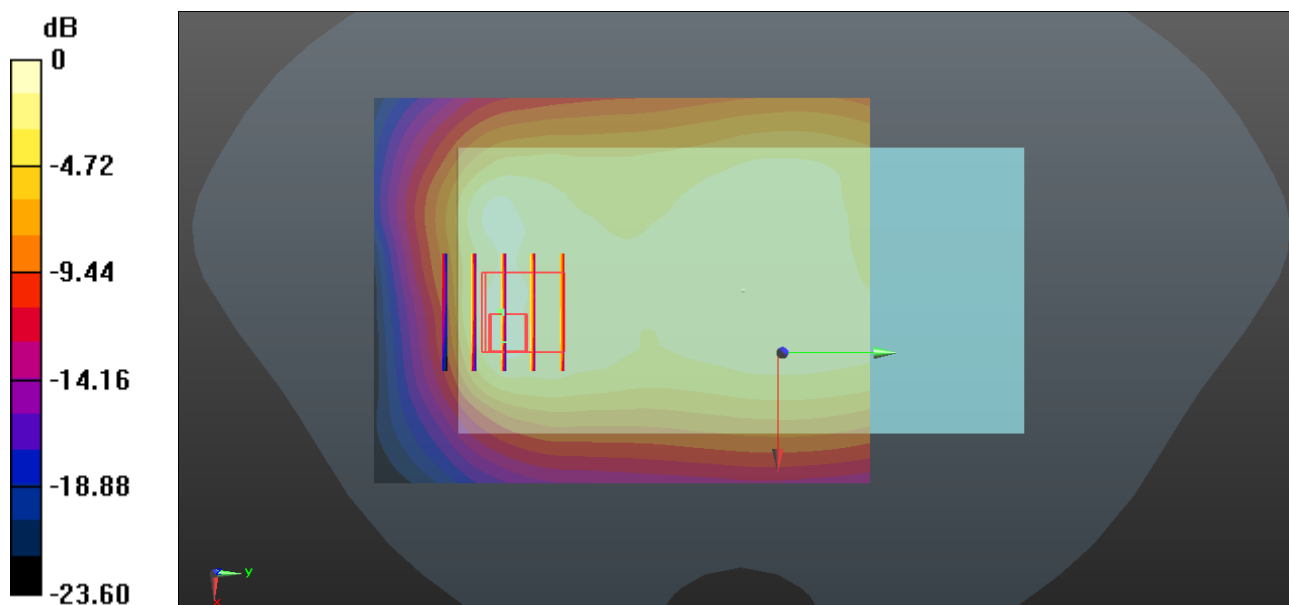
Communication System: UID 0, WCDMA (0); Frequency: 826.4 MHz; Duty Cycle: 1:1  
Medium: MSL\_850 Medium parameters used:  $f = 826.4$  MHz;  $\sigma = 0.982$  S/m;  $\epsilon_r = 55.371$ ;  $\rho = 1000$  kg/m<sup>3</sup>  
Ambient Temperature : 23.4 °C ; Liquid Temperature : 22.7 °C

#### DASY5 Configuration:

- Probe: EX3DV4 - SN3857; ConvF(9.49, 9.49, 9.49); Calibrated: 2018.5.31
- Sensor-Surface: 1.4mm (Mechanical Surface Detection)
- Electronics: DAE4 Sn1358; Calibrated: 2018.4.19
- Phantom: SAM1; Type: SAM; Serial: TP-1697
- Measurement SW: DASY52, Version 52.10 (1); SEMCAD X Version 14.6.10 (7372)

**Ch4132/Area Scan (71x91x1):** Interpolated grid: dx=1.500 mm, dy=1.500 mm  
Maximum value of SAR (interpolated) = 0.680 W/kg

**Ch4132/Zoom Scan (5x5x7)/Cube 0:** Measurement grid: dx=8mm, dy=8mm, dz=5mm  
Reference Value = 23.73 V/m; Power Drift = -0.01 dB  
Peak SAR (extrapolated) = 0.866 W/kg  
**SAR(1 g) = 0.417 W/kg; SAR(10 g) = 0.259 W/kg**  
Maximum value of SAR (measured) = 0.698 W/kg



0 dB = 0.680 W/kg = -1.67 dBW/kg

### 26\_WCDMA Band IV\_RMC 12.2Kbps\_Back\_5mm\_Ch1513

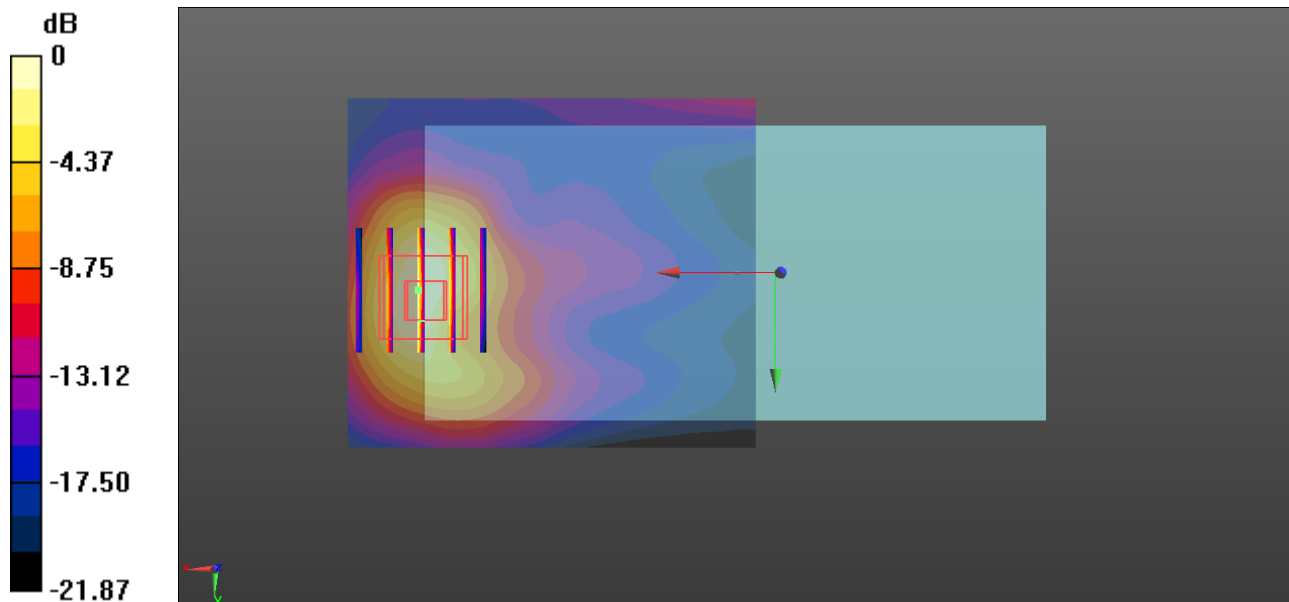
Communication System: UID 0, UMTS (0); Frequency: 1752.6 MHz; Duty Cycle: 1:1  
Medium: MSL\_1750 Medium parameters used:  $f = 1752.6$  MHz;  $\sigma = 1.448$  S/m;  $\epsilon_r = 54.466$ ;  $\rho = 1000$  kg/m<sup>3</sup>  
Ambient Temperature : 23.3 °C ; Liquid Temperature : 22.6 °C

#### DASY5 Configuration:

- Probe: EX3DV4 - SN3954; ConvF(8.31, 8.31, 8.31); Calibrated: 2018.1.31;
- Sensor-Surface: 1.4mm (Mechanical Surface Detection)
- Electronics: DAE4 Sn1210; Calibrated: 2018.5.28
- Phantom: SAM2; Type: SAM; Serial: TP-1503
- Measurement SW: DASY52, Version 52.8 (8); SEMCAD X Version 14.6.10 (7372)

**Ch1513/Area Scan (61x71x1):** Interpolated grid: dx=1.500 mm, dy=1.500 mm  
Maximum value of SAR (interpolated) = 1.47 W/kg

**Ch1513/Zoom Scan (5x5x7)/Cube 0:** Measurement grid: dx=8mm, dy=8mm, dz=5mm  
Reference Value = 32.93 V/m; Power Drift = -0.05 dB  
Peak SAR (extrapolated) = 2.01 W/kg  
**SAR(1 g) = 1.23 W/kg; SAR(10 g) = 0.670 W/kg**  
Maximum value of SAR (measured) = 1.65 W/kg



0 dB = 1.47 W/kg = 1.67 dBW/kg

**27\_WCDMA Band II\_RMC 12.2Kbps\_Back\_5mm\_Sensor\_Headset\_Ch9538**

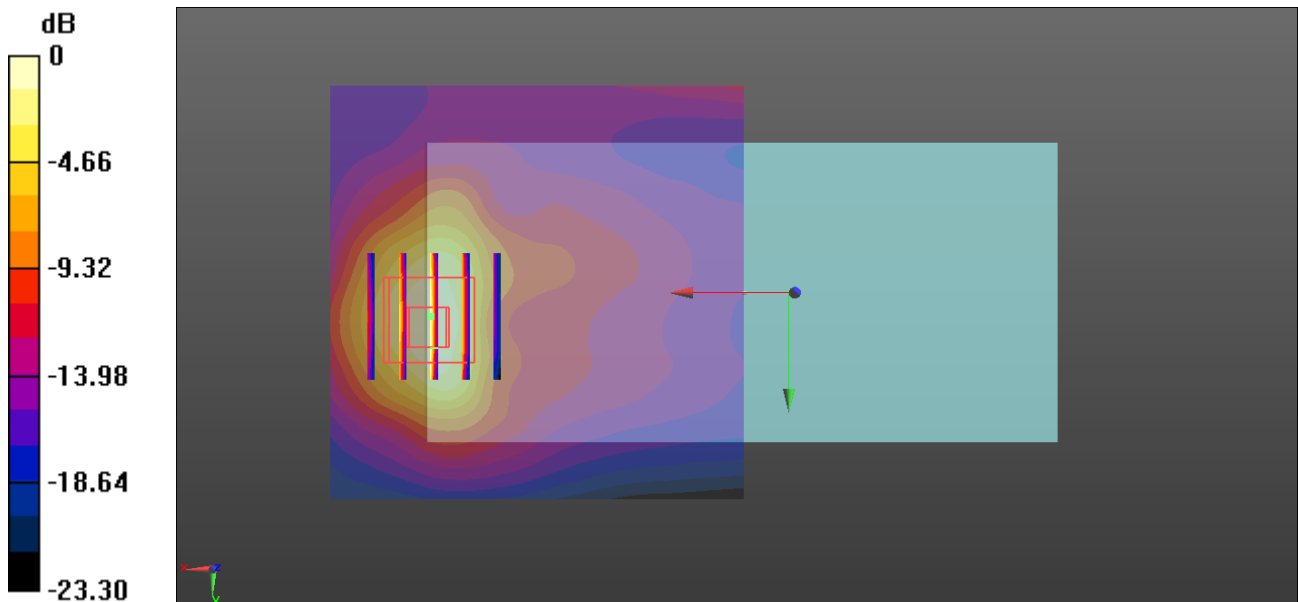
Communication System: UID 0, UMTS (0); Frequency: 1907.6 MHz; Duty Cycle: 1:1  
 Medium: MSL\_1900 Medium parameters used:  $f = 1907.6 \text{ MHz}$ ;  $\sigma = 1.528 \text{ S/m}$ ;  $\epsilon_r = 53.878$ ;  $\rho = 1000 \text{ kg/m}^3$   
 Ambient Temperature :  $23.4 \text{ }^\circ\text{C}$ ; Liquid Temperature :  $22.7 \text{ }^\circ\text{C}$

**DASY5 Configuration:**

- Probe: EX3DV4 - SN3954; ConvF(8.03, 8.03, 8.03); Calibrated: 2018.1.31;
- Sensor-Surface: 1.4mm (Mechanical Surface Detection)
- Electronics: DAE4 Sn1210; Calibrated: 2018.5.28
- Phantom: SAM2; Type: SAM; Serial: TP-1503
- Measurement SW: DASY52, Version 52.8 (8); SEMCAD X Version 14.6.10 (7372)

**Ch9538/Area Scan (71x71x1):** Interpolated grid:  $dx=1.500 \text{ mm}$ ,  $dy=1.500 \text{ mm}$   
 Maximum value of SAR (interpolated) =  $1.61 \text{ W/kg}$

**Ch9538/Zoom Scan (5x5x7)/Cube 0:** Measurement grid:  $dx=8\text{mm}$ ,  $dy=8\text{mm}$ ,  $dz=5\text{mm}$   
 Reference Value =  $33.22 \text{ V/m}$ ; Power Drift =  $-0.06 \text{ dB}$   
 Peak SAR (extrapolated) =  $2.03 \text{ W/kg}$   
**SAR(1 g) =  $1.24 \text{ W/kg}$ ; SAR(10 g) =  $0.670 \text{ W/kg}$**   
 Maximum value of SAR (measured) =  $1.73 \text{ W/kg}$



0 dB =  $1.61 \text{ W/kg} = 2.07 \text{ dBW/kg}$

### 28\_LTE Band 5\_10M\_QPSK\_1RB\_49Offset\_Back\_5mm\_Ch20525

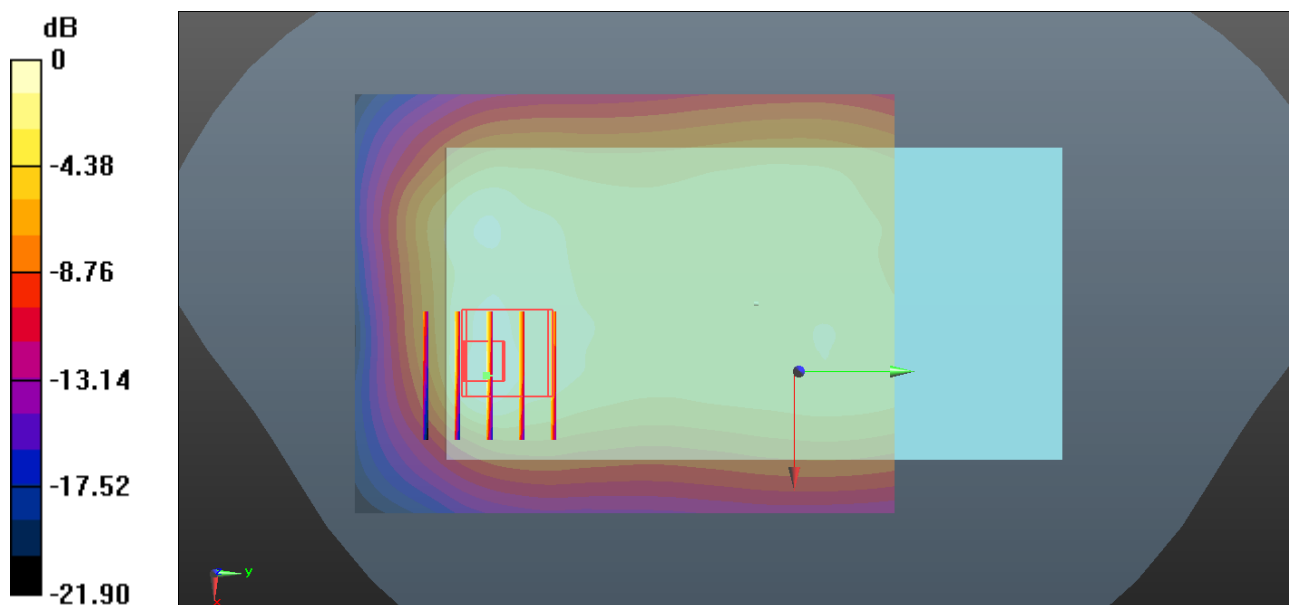
Communication System: UID 0, LTE (0); Frequency: 836.5 MHz; Duty Cycle: 1:1  
Medium: MSL\_850 Medium parameters used:  $f = 836.5$  MHz;  $\sigma = 0.991$  S/m;  $\epsilon_r = 55.26$ ;  $\rho = 1000$  kg/m<sup>3</sup>  
Ambient Temperature : 23.4 °C ; Liquid Temperature : 22.7 °C

#### DASY5 Configuration:

- Probe: EX3DV4 - SN3857; ConvF(9.49, 9.49, 9.49); Calibrated: 2018.5.31
- Sensor-Surface: 1.4mm (Mechanical Surface Detection)
- Electronics: DAE4 Sn1358; Calibrated: 2018.4.19
- Phantom: SAM1; Type: SAM; Serial: TP-1697
- Measurement SW: DASY52, Version 52.10 (1); SEMCAD X Version 14.6.10 (7372)

**Ch20525/Area Scan (71x91x1):** Interpolated grid: dx=1.500 mm, dy=1.500 mm  
Maximum value of SAR (interpolated) = 0.709 W/kg

**Ch20525/Zoom Scan (5x5x7)/Cube 0:** Measurement grid: dx=8mm, dy=8mm, dz=5mm  
Reference Value = 26.68 V/m; Power Drift = -0.01 dB  
Peak SAR (extrapolated) = 0.805 W/kg  
**SAR(1 g) = 0.433 W/kg; SAR(10 g) = 0.271 W/kg**  
Maximum value of SAR (measured) = 0.657 W/kg



0 dB = 0.709 W/kg = -1.49 dBW/kg

### 29\_LTE Band 66\_20M\_QPSK\_1RB\_99Offset\_Back\_5mm\_Ch132572

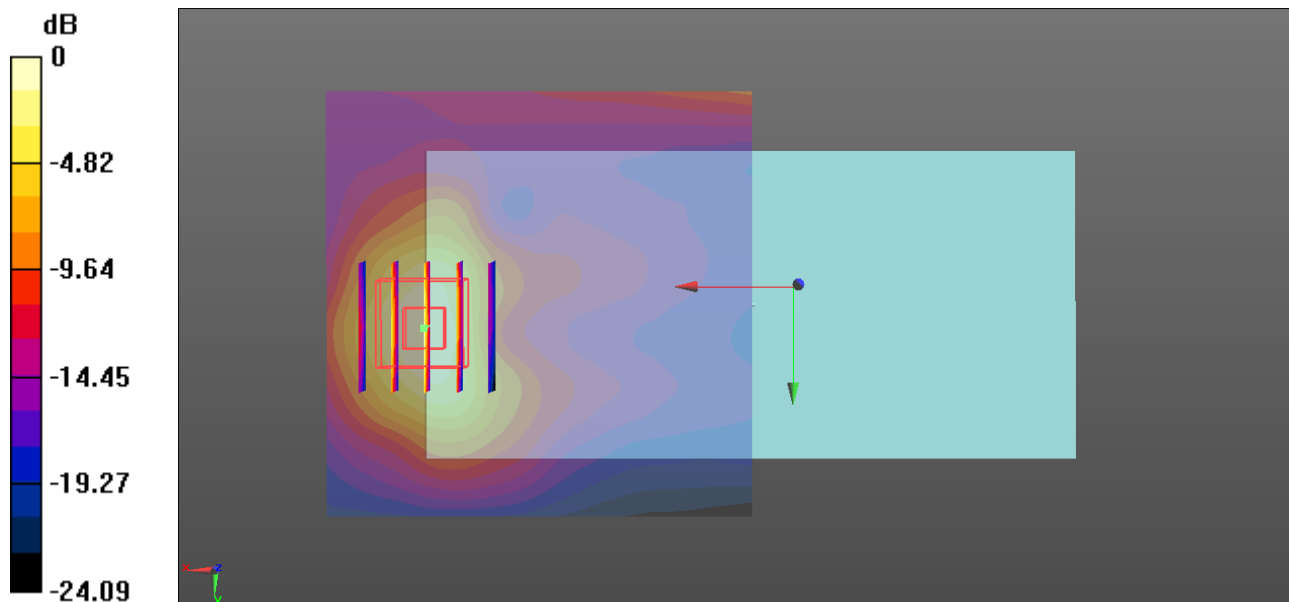
Communication System: UID 0, FDD\_LTE (0); Frequency: 1770 MHz; Duty Cycle: 1:1  
Medium: MSL\_1750 Medium parameters used:  $f = 1770$  MHz;  $\sigma = 1.464$  S/m;  $\epsilon_r = 54.418$ ;  $\rho = 1000$  kg/m<sup>3</sup>  
Ambient Temperature : 23.3 °C ; Liquid Temperature : 22.6 °C

#### DASY5 Configuration:

- Probe: EX3DV4 - SN3954; ConvF(8.31, 8.31, 8.31); Calibrated: 2018.1.31;
- Sensor-Surface: 1.4mm (Mechanical Surface Detection)
- Electronics: DAE4 Sn1210; Calibrated: 2018.5.28
- Phantom: SAM2; Type: SAM; Serial: TP-1503
- Measurement SW: DASY52, Version 52.8 (8); SEMCAD X Version 14.6.10 (7372)

**Ch132572/Area Scan (71x71x1):** Interpolated grid: dx=1.500 mm, dy=1.500 mm  
Maximum value of SAR (interpolated) = 1.45 W/kg

**Ch132572/Zoom Scan (5x5x7)/Cube 0:** Measurement grid: dx=8mm, dy=8mm, dz=5mm  
Reference Value = 33.53 V/m; Power Drift = -0.01 dB  
Peak SAR (extrapolated) = 1.87 W/kg  
**SAR(1 g) = 1.17 W/kg; SAR(10 g) = 0.640 W/kg**  
Maximum value of SAR (measured) = 1.65 W/kg



0 dB = 1.45 W/kg = 1.61 dBW/kg

### 30\_LTE Band 2\_20M\_QPSK\_100RB\_0Offset\_Back\_5mm\_Ch19100

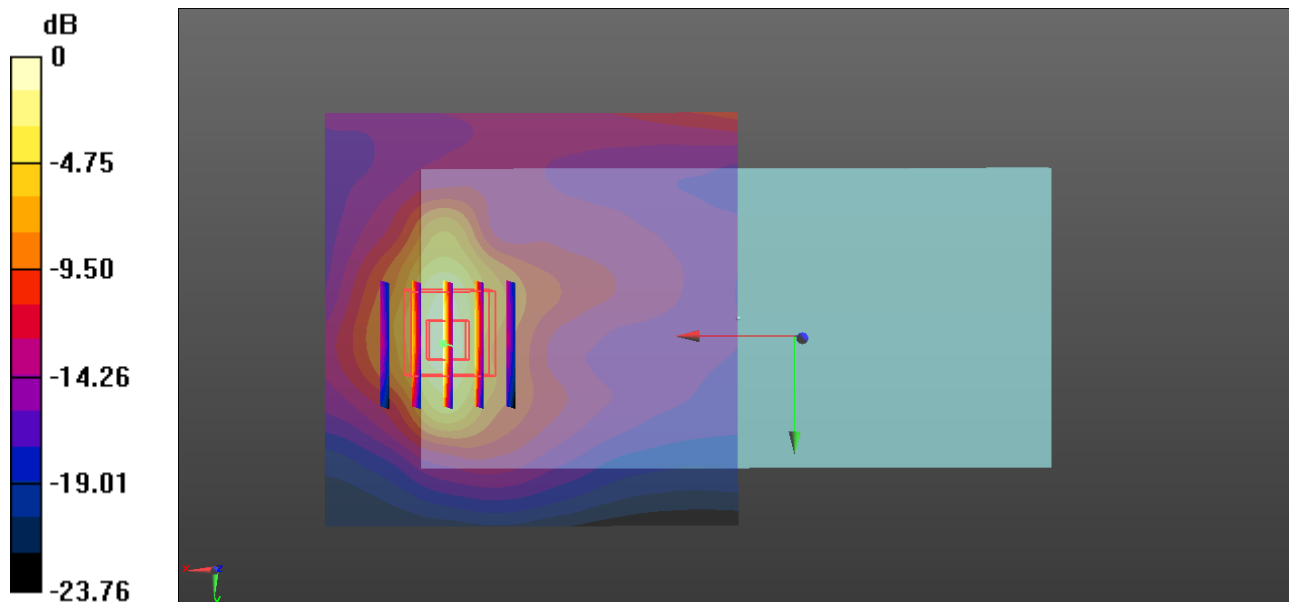
Communication System: UID 0, FDD\_LTE (0); Frequency: 1900 MHz; Duty Cycle: 1:1  
Medium: MSL\_1900 Medium parameters used:  $f = 1900$  MHz;  $\sigma = 1.519$  S/m;  $\epsilon_r = 53.914$ ;  $\rho = 1000$  kg/m<sup>3</sup>  
Ambient Temperature : 23.4 °C ; Liquid Temperature : 22.7 °C

#### DASY5 Configuration:

- Probe: EX3DV4 - SN3954; ConvF(8.03, 8.03, 8.03); Calibrated: 2018.1.31;
- Sensor-Surface: 1.4mm (Mechanical Surface Detection)
- Electronics: DAE4 Sn1210; Calibrated: 2018.5.28
- Phantom: SAM2; Type: SAM; Serial: TP-1503
- Measurement SW: DASY52, Version 52.8 (8); SEMCAD X Version 14.6.10 (7372)

**Ch19100/Area Scan (71x71x1):** Interpolated grid: dx=1.500 mm, dy=1.500 mm  
Maximum value of SAR (interpolated) = 1.87 W/kg

**Ch19100/Zoom Scan (5x5x7)/Cube 0:** Measurement grid: dx=8mm, dy=8mm, dz=5mm  
Reference Value = 34.49 V/m; Power Drift = -0.06 dB  
Peak SAR (extrapolated) = 2.04 W/kg  
**SAR(1 g) = 1.26 W/kg; SAR(10 g) = 0.677 W/kg**  
Maximum value of SAR (measured) = 1.78 W/kg



0 dB = 1.87 W/kg = 2.72 dBW/kg

### 31\_LTE Band 7\_20M\_QPSK\_1RB\_0Offset\_Back\_5mm\_Ch21350

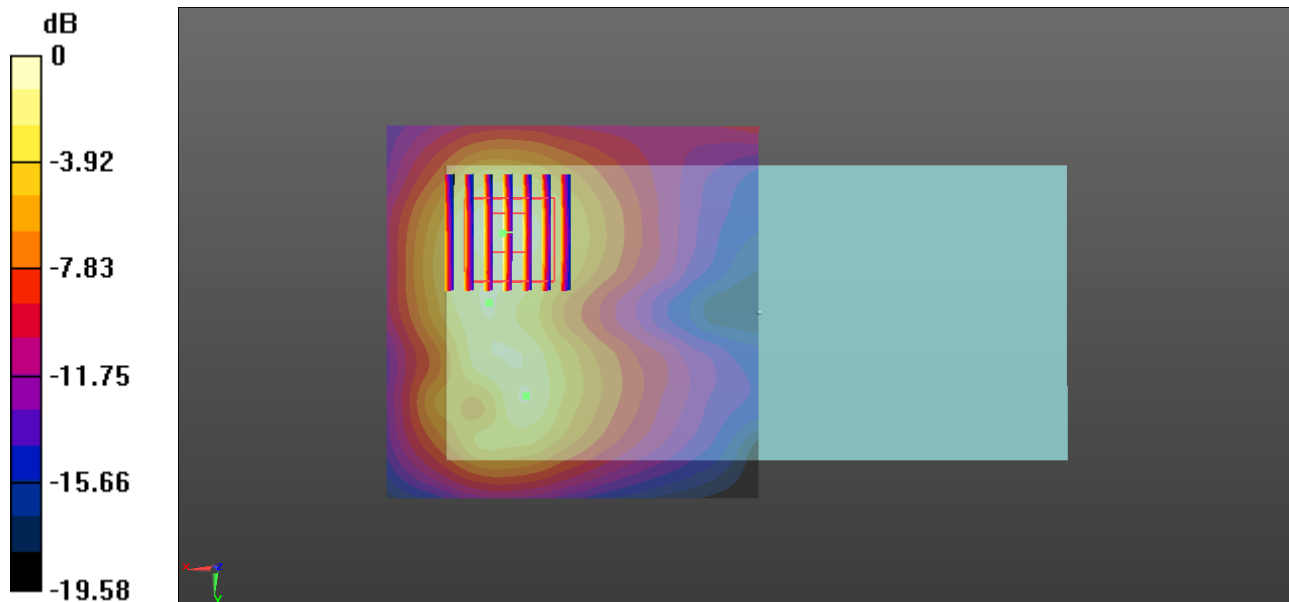
Communication System: UID 0, FDD\_LTE (0); Frequency: 2560 MHz; Duty Cycle: 1:1  
Medium: MSL\_2600 Medium parameters used:  $f = 2560$  MHz;  $\sigma = 2.159$  S/m;  $\epsilon_r = 52.664$ ;  $\rho = 1000$  kg/m<sup>3</sup>  
Ambient Temperature : 23.4 °C ; Liquid Temperature : 22.7 °C

#### DASY5 Configuration:

- Probe: EX3DV4 - SN3954; ConvF(6.92, 6.92, 6.92); Calibrated: 2018.1.31;
- Sensor-Surface: 1.4mm (Mechanical Surface Detection)
- Electronics: DAE4 Sn1210; Calibrated: 2018.5.28
- Phantom: SAM1; Type: SAM; Serial: TP-1697
- Measurement SW: DASY52, Version 52.8 (8); SEMCAD X Version 14.6.10 (7372)

**Ch21350/Area Scan (81x81x1):** Interpolated grid: dx=1.200 mm, dy=1.200 mm  
Maximum value of SAR (interpolated) = 1.95 W/kg

**Ch21350/Zoom Scan (7x7x7)/Cube 0:** Measurement grid: dx=5mm, dy=5mm, dz=5mm  
Reference Value = 30.67 V/m; Power Drift = -0.09 dB  
Peak SAR (extrapolated) = 2.38 W/kg  
**SAR(1 g) = 1.32 W/kg; SAR(10 g) = 0.715 W/kg**  
Maximum value of SAR (measured) = 2.01 W/kg



0 dB = 1.95 W/kg = 2.90 dBW/kg

### 32\_WLAN2.4GHz\_802.11b 1Mbps\_Back\_5mm\_Ch1

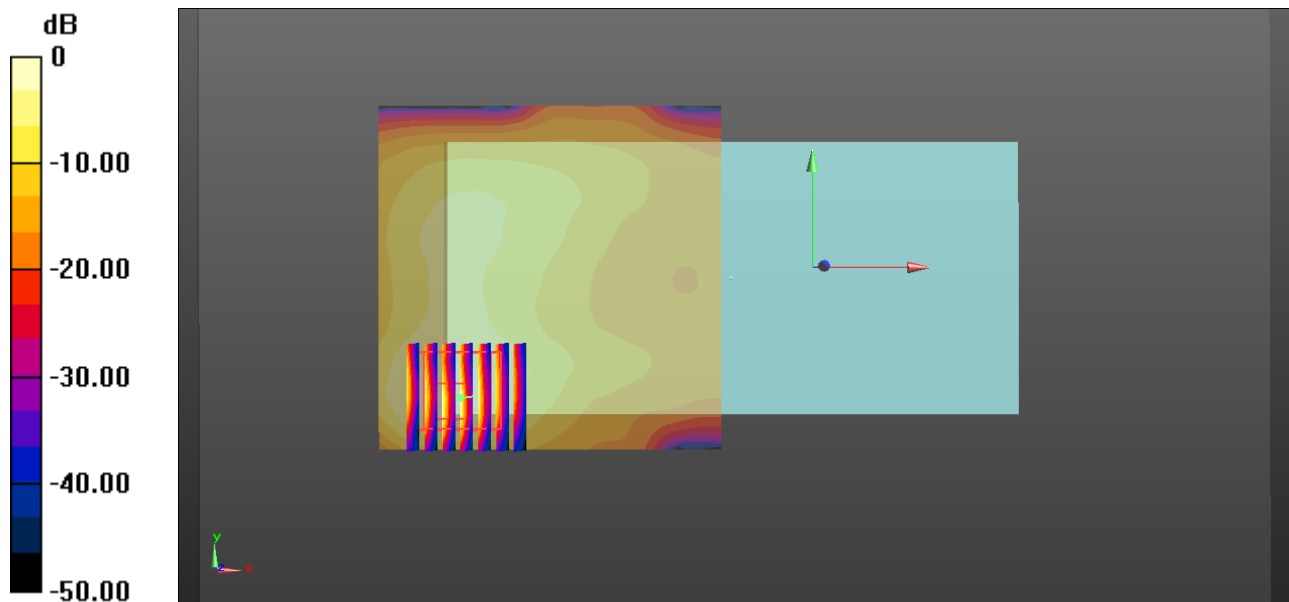
Communication System: UID 0, WIFI (0); Frequency: 2412 MHz; Duty Cycle: 1:1.025  
Medium: MSL\_2450 Medium parameters used:  $f = 2412$  MHz;  $\sigma = 1.95$  S/m;  $\epsilon_r = 53.257$ ;  $\rho = 1000$  kg/m<sup>3</sup>  
Ambient Temperature : 23.4 °C ; Liquid Temperature : 22.7 °C

#### DASY5 Configuration:

- Probe: EX3DV4 - SN3954; ConvF(7.53, 7.53, 7.53); Calibrated: 2018.1.31;
- Sensor-Surface: 1.4mm (Mechanical Surface Detection)
- Electronics: DAE4 Sn1210; Calibrated: 2018.5.28
- Phantom: SAM2; Type: SAM; Serial: TP-1503
- Measurement SW: DASY52, Version 52.8 (8); SEMCAD X Version 14.6.10 (7372)

**Ch1/Area Scan (81x81x1):** Interpolated grid: dx=1.200 mm, dy=1.200 mm  
Maximum value of SAR (interpolated) = 0.377 W/kg

**Ch1/Zoom Scan (7x7x7)/Cube 0:** Measurement grid: dx=5mm, dy=5mm, dz=5mm  
Reference Value = 13.72 V/m; Power Drift = -0.04 dB  
Peak SAR (extrapolated) = 0.412 W/kg  
**SAR(1 g) = 0.211 W/kg; SAR(10 g) = 0.103 W/kg**  
Maximum value of SAR (measured) = 0.340 W/kg



0 dB = 0.377 W/kg = -4.24 dBW/kg



### 33\_Bluetooth\_1Mbps\_Back\_5mm\_Ch39

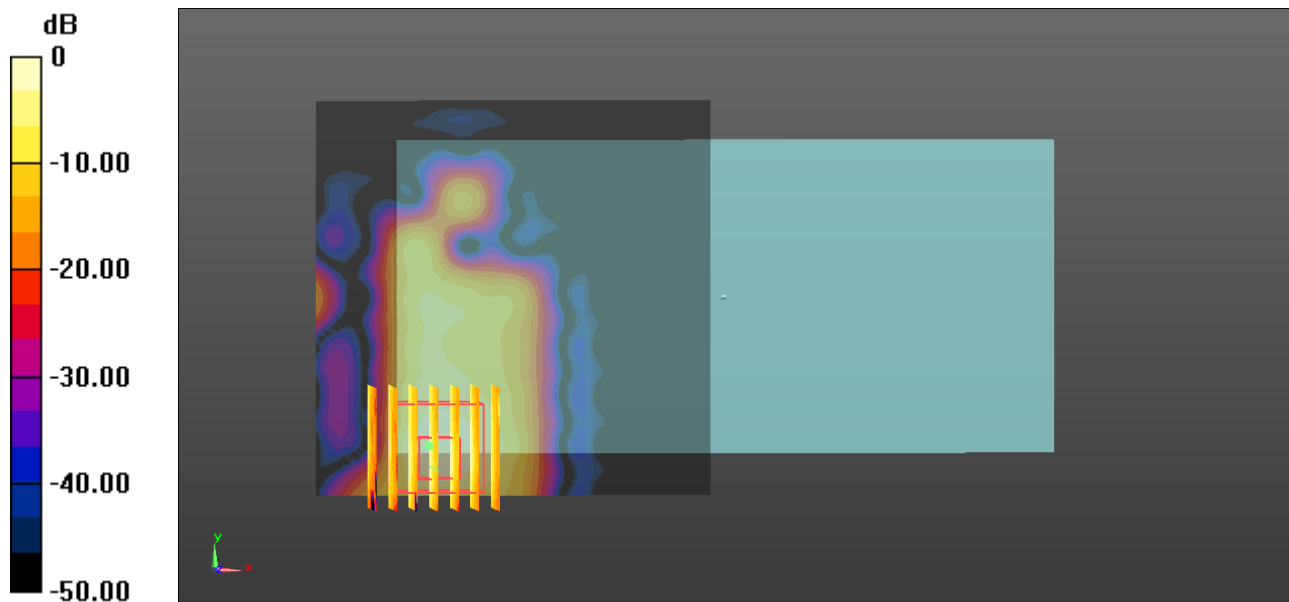
Communication System: UID 0, Bluetooth (0); Frequency: 2441 MHz; Duty Cycle: 1:1.298  
Medium: MSL\_2450 Medium parameters used:  $f = 2441$  MHz;  $\sigma = 1.991$  S/m;  $\epsilon_r = 53.144$ ;  $\rho = 1000$  kg/m<sup>3</sup>  
Ambient Temperature : 23.4 °C ; Liquid Temperature : 22.7 °C

#### DASY5 Configuration:

- Probe: EX3DV4 - SN3954; ConvF(7.53, 7.53, 7.53); Calibrated: 2018.1.31;
- Sensor-Surface: 1.4mm (Mechanical Surface Detection)
- Electronics: DAE4 Sn1210; Calibrated: 2018.5.28
- Phantom: SAM2; Type: SAM; Serial: TP-1503
- Measurement SW: DASY52, Version 52.8 (8); SEMCAD X Version 14.6.10 (7372)

**Ch39/Area Scan (81x81x1):** Interpolated grid: dx=1.200 mm, dy=1.200 mm  
Maximum value of SAR (interpolated) = 0.0566 W/kg

**Ch39/Zoom Scan (7x7x7)/Cube 0:** Measurement grid: dx=5mm, dy=5mm, dz=5mm  
Reference Value = 4.178 V/m; Power Drift = -0.05 dB  
Peak SAR (extrapolated) = 0.0530 W/kg  
**SAR(1 g) = 0.022 W/kg; SAR(10 g) = 0.00801 W/kg**  
Maximum value of SAR (measured) = 0.0409 W/kg



0 dB = 0.0566 W/kg = -12.47 dBW/kg

### 34\_GSM1900\_GPRS 4 Tx slots\_Back\_0mm\_Ch661

Communication System: UID 0, GPRS/EDGE (4 Tx slots) (0); Frequency: 1880 MHz; Duty Cycle: 1:2.08

Medium: MSL\_1900 Medium parameters used:  $f = 1880$  MHz;  $\sigma = 1.495$  S/m;  $\epsilon_r = 53.992$ ;  $\rho = 1000$  kg/m<sup>3</sup>

Ambient Temperature : 23.4 °C ; Liquid Temperature : 22.7 °C

#### DASY5 Configuration:

- Probe: EX3DV4 - SN3954; ConvF(8.03, 8.03, 8.03); Calibrated: 2018.1.31;
- Sensor-Surface: 1.4mm (Mechanical Surface Detection)
- Electronics: DAE4 Sn1210; Calibrated: 2018.5.28
- Phantom: SAM2; Type: SAM; Serial: TP-1503
- Measurement SW: DASY52, Version 52.8 (8); SEMCAD X Version 14.6.10 (7372)

**Ch661/Area Scan (71x71x1):** Interpolated grid: dx=1.500 mm, dy=1.500 mm

Maximum value of SAR (interpolated) = 6.13 W/kg

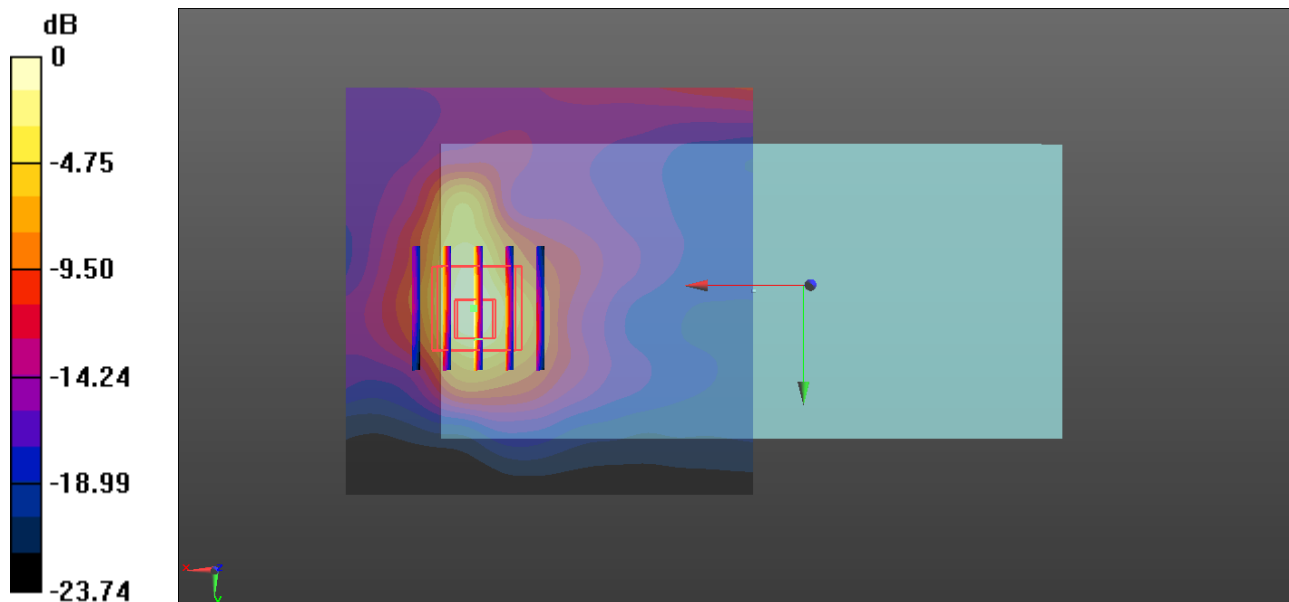
**Ch661/Zoom Scan (5x5x7)/Cube 0:** Measurement grid: dx=8mm, dy=8mm, dz=5mm

Reference Value = 59.72 V/m; Power Drift = -0.06 dB

Peak SAR (extrapolated) = 7.71 W/kg

**SAR(1 g) = 3.87 W/kg; SAR(10 g) = 1.96 W/kg**

Maximum value of SAR (measured) = 6.37 W/kg



0 dB = 6.13 W/kg = 7.87 dBW/kg

### 35\_WCDMA Band IV\_RMC 12.2Kbps\_Bottom Side\_0mm\_Ch1312

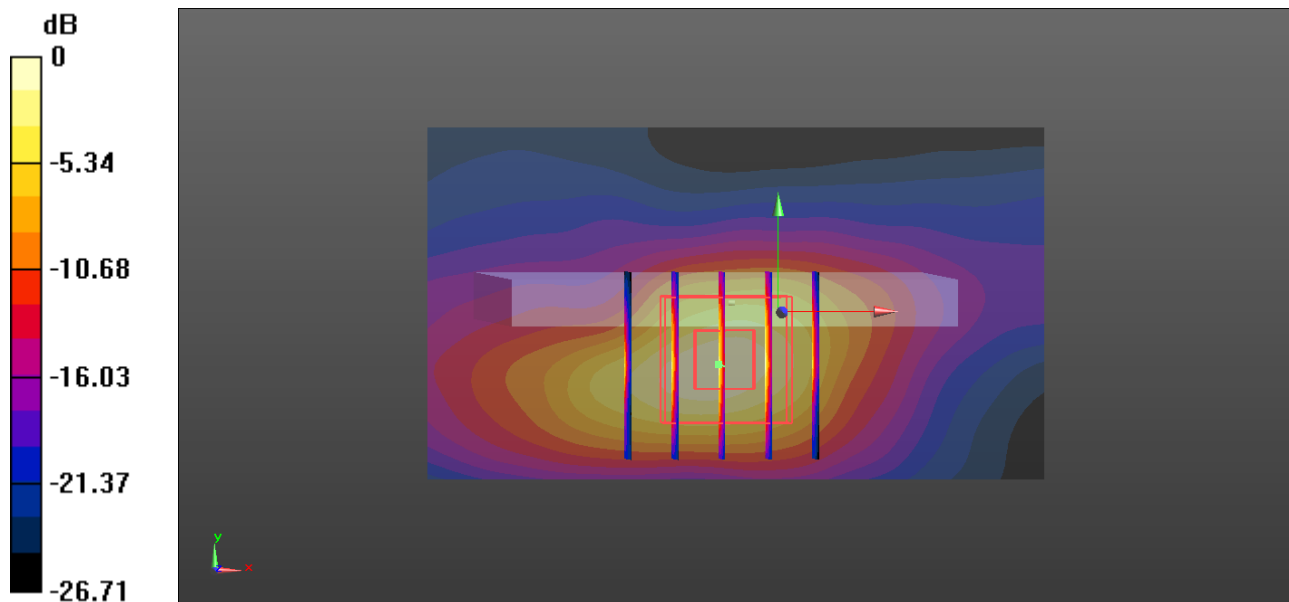
Communication System: UID 0, UMTS (0); Frequency: 1712.4 MHz; Duty Cycle: 1:1  
Medium: MSL\_1750 Medium parameters used (interpolated):  $f = 1712.4$  MHz;  $\sigma = 1.404$  S/m;  $\epsilon_r = 54.601$ ;  $\rho = 1000$  kg/m<sup>3</sup>  
Ambient Temperature : 23.3 °C ; Liquid Temperature : 22.6 °C

#### DASY5 Configuration:

- Probe: EX3DV4 - SN3954; ConvF(8.31, 8.31, 8.31); Calibrated: 2018.1.31;
- Sensor-Surface: 1.4mm (Mechanical Surface Detection)
- Electronics: DAE4 Sn1210; Calibrated: 2018.5.28
- Phantom: SAM2; Type: SAM; Serial: TP-1503
- Measurement SW: DASY52, Version 52.8 (8); SEMCAD X Version 14.6.10 (7372)

**Ch1312/Area Scan (41x71x1):** Interpolated grid: dx=1.500 mm, dy=1.500 mm  
Maximum value of SAR (interpolated) = 8.90 W/kg

**Ch1312/Zoom Scan (5x5x7)/Cube 0:** Measurement grid: dx=8mm, dy=8mm, dz=5mm  
Reference Value = 98.06 V/m; Power Drift = -0.03 dB  
Peak SAR (extrapolated) = 13.1 W/kg  
**SAR(1 g) = 7.11 W/kg; SAR(10 g) = 3.34 W/kg**  
Maximum value of SAR (measured) = 11.6 W/kg



0 dB = 8.90 W/kg = 9.49 dBW/kg

### 36\_WCDMA II\_RMC 12.2Kbps\_Back\_0mm\_Ch9400

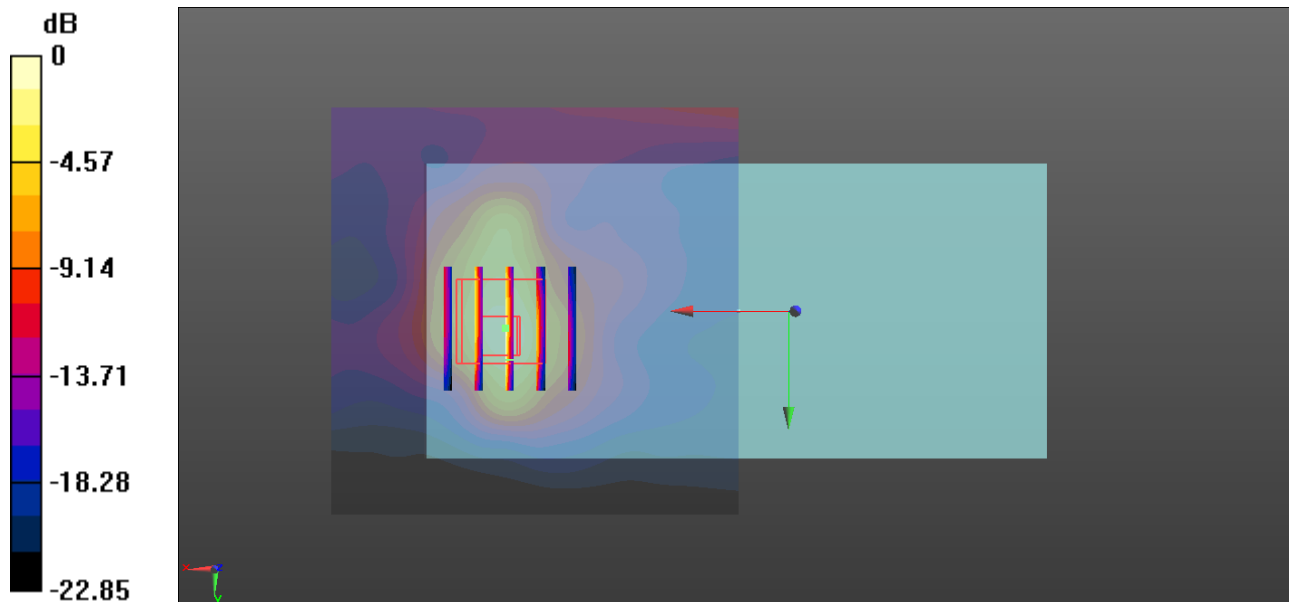
Communication System: UID 0, UMTS (0); Frequency: 1880 MHz; Duty Cycle: 1:1  
Medium: MSL\_1900 Medium parameters used:  $f = 1880$  MHz;  $\sigma = 1.495$  S/m;  $\epsilon_r = 53.992$ ;  $\rho = 1000$  kg/m<sup>3</sup>  
Ambient Temperature : 23.4 °C ; Liquid Temperature : 22.7 °C

#### DASY5 Configuration:

- Probe: EX3DV4 - SN3954; ConvF(8.03, 8.03, 8.03); Calibrated: 2018.1.31;
- Sensor-Surface: 1.4mm (Mechanical Surface Detection)
- Electronics: DAE4 Sn1210; Calibrated: 2018.5.28
- Phantom: SAM2; Type: SAM; Serial: TP-1503
- Measurement SW: DASY52, Version 52.8 (8); SEMCAD X Version 14.6.10 (7372)

**Ch9400/Area Scan (71x71x1):** Interpolated grid: dx=1.500 mm, dy=1.500 mm  
Maximum value of SAR (interpolated) = 9.72 W/kg

**Ch9400/Zoom Scan (5x5x7)/Cube 0:** Measurement grid: dx=8mm, dy=8mm, dz=5mm  
Reference Value = 75.21 V/m; Power Drift = -0.06 dB  
Peak SAR (extrapolated) = 11.6 W/kg  
**SAR(1 g) = 5.87 W/kg; SAR(10 g) = 2.9 W/kg**  
Maximum value of SAR (measured) = 9.00 W/kg



0 dB = 9.72 W/kg = 9.88 dBW/kg

### 37\_LTE Band 66\_20M\_QPSK\_1RB\_99Offset\_Bottom Side\_0mm\_Ch132322

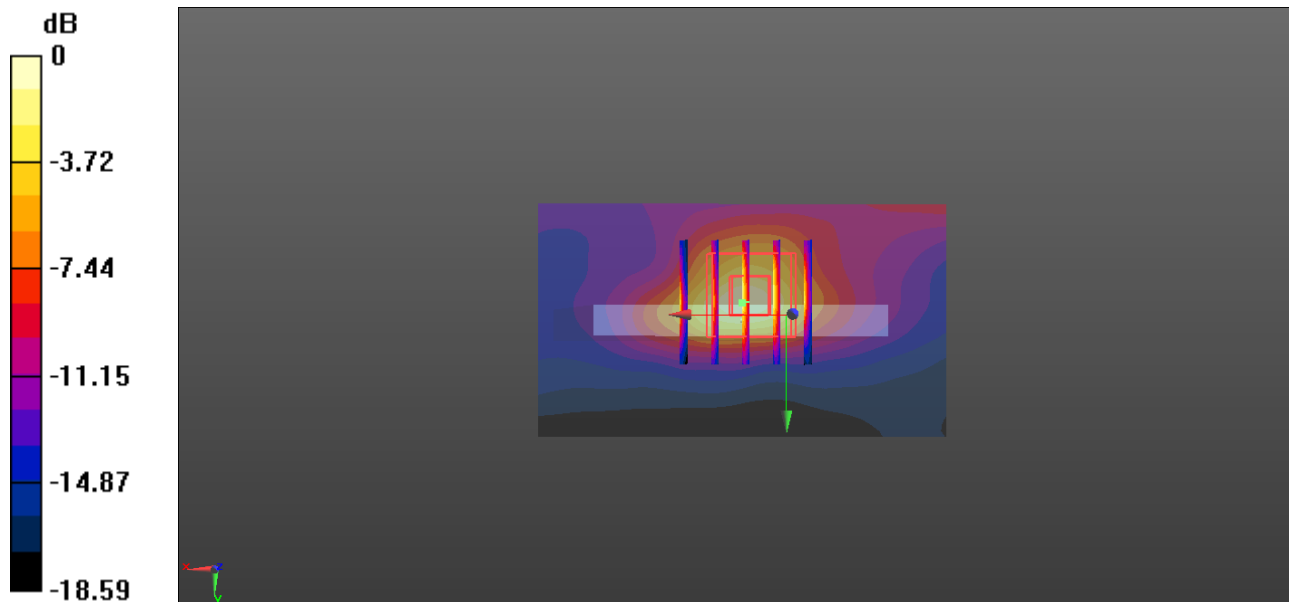
Communication System: UID 0, FDD\_LTE (0); Frequency: 1745 MHz; Duty Cycle: 1:1  
Medium: MSL\_1750 Medium parameters used:  $f = 1745$  MHz;  $\sigma = 1.439$  S/m;  $\epsilon_r = 54.485$ ;  $\rho = 1000$  kg/m<sup>3</sup>  
Ambient Temperature : 23.3 °C ; Liquid Temperature : 22.6 °C

#### DASY5 Configuration:

- Probe: EX3DV4 - SN3954; ConvF(8.31, 8.31, 8.31); Calibrated: 2018.1.31;
- Sensor-Surface: 1.4mm (Mechanical Surface Detection)
- Electronics: DAE4 Sn1210; Calibrated: 2018.5.28
- Phantom: SAM2; Type: SAM; Serial: TP-1503
- Measurement SW: DASY52, Version 52.8 (8); SEMCAD X Version 14.6.10 (7372)

**Ch132322/Area Scan (41x71x1):** Interpolated grid: dx=1.500 mm, dy=1.500 mm  
Maximum value of SAR (interpolated) = 8.83 W/kg

**Ch132322/Zoom Scan (5x5x7)/Cube 0:** Measurement grid: dx=8mm, dy=8mm, dz=5mm  
Reference Value = 93.61 V/m; Power Drift = -0.01 dB  
Peak SAR (extrapolated) = 12.7 W/kg  
**SAR(1 g) = 7.15 W/kg; SAR(10 g) = 3.42 W/kg**  
Maximum value of SAR (measured) = 10.6 W/kg



0 dB = 8.83 W/kg = 9.46 dBW/kg

### 38\_LTE Band 2\_20M\_QPSK\_1RB\_0Offset\_Back\_0mm\_Ch19100

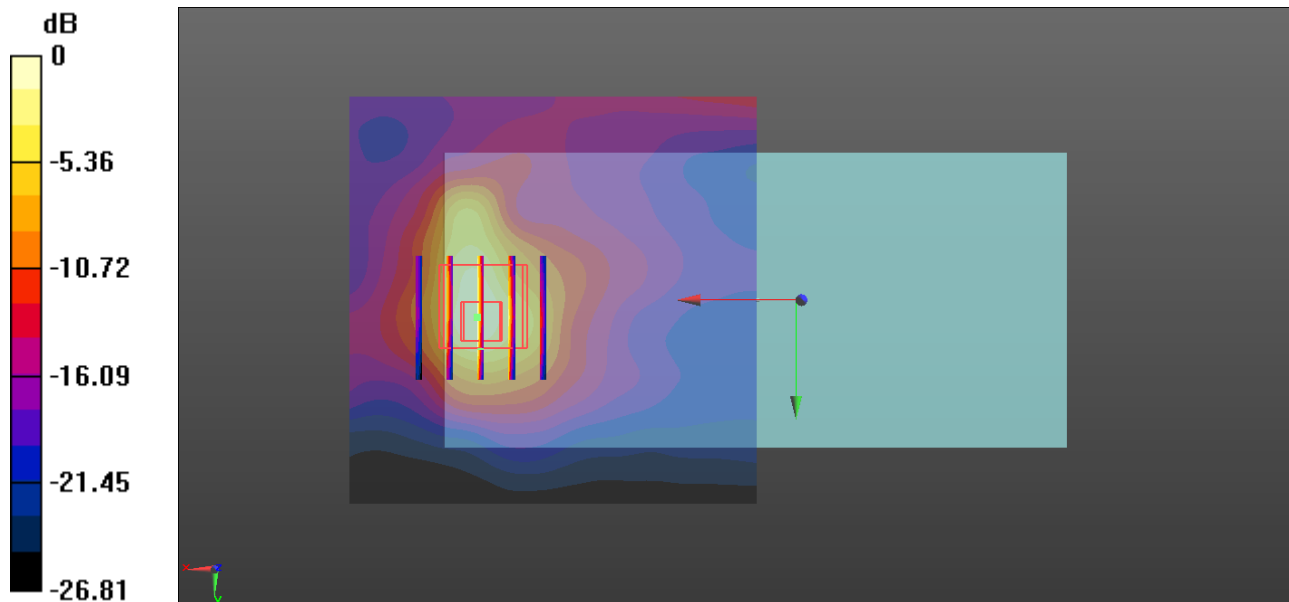
Communication System: UID 0, FDD\_LTE (0); Frequency: 1900 MHz; Duty Cycle: 1:1  
Medium: MSL\_1900 Medium parameters used:  $f = 1900$  MHz;  $\sigma = 1.519$  S/m;  $\epsilon_r = 53.914$ ;  $\rho = 1000$  kg/m<sup>3</sup>  
Ambient Temperature : 23.4 °C ; Liquid Temperature : 22.7 °C

#### DASY5 Configuration:

- Probe: EX3DV4 - SN3954; ConvF(8.03, 8.03, 8.03); Calibrated: 2018.1.31;
- Sensor-Surface: 1.4mm (Mechanical Surface Detection)
- Electronics: DAE4 Sn1210; Calibrated: 2018.5.28
- Phantom: SAM2; Type: SAM; Serial: TP-1503
- Measurement SW: DASY52, Version 52.8 (8); SEMCAD X Version 14.6.10 (7372)

**Ch19100/Area Scan (71x71x1):** Interpolated grid: dx=1.500 mm, dy=1.500 mm  
Maximum value of SAR (interpolated) = 9.80 W/kg

**Ch19100/Zoom Scan (5x5x7)/Cube 0:** Measurement grid: dx=8mm, dy=8mm, dz=5mm  
Reference Value = 77.57 V/m; Power Drift = -0.04 dB  
Peak SAR (extrapolated) = 12.1 W/kg  
**SAR(1 g) = 6.27 W/kg; SAR(10 g) = 3.16 W/kg**  
Maximum value of SAR (measured) = 9.42 W/kg



0 dB = 9.80 W/kg = 9.91 dBW/kg

### 39\_LTE Band 7\_20M\_QPSK\_1RB\_0Offset\_Back\_0mm\_Extremity On\_Ch21350

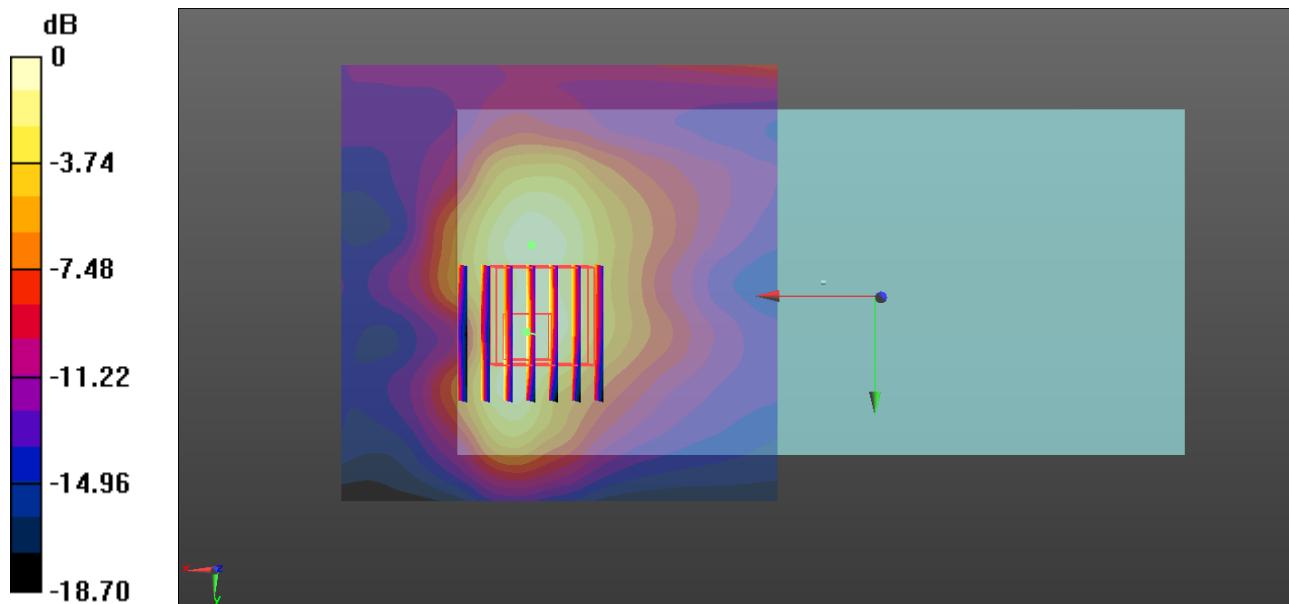
Communication System: UID 0, FDD\_LTE (0); Frequency: 2560 MHz; Duty Cycle: 1:1  
Medium: MSL\_2600 Medium parameters used:  $f = 2560$  MHz;  $\sigma = 2.159$  S/m;  $\epsilon_r = 52.664$ ;  $\rho = 1000$  kg/m<sup>3</sup>  
Ambient Temperature : 23.4 °C ; Liquid Temperature : 22.7 °C

#### DASY5 Configuration:

- Probe: EX3DV4 - SN3954; ConvF(6.92, 6.92, 6.92); Calibrated: 2018.1.31;
- Sensor-Surface: 1.4mm (Mechanical Surface Detection)
- Electronics: DAE4 Sn1210; Calibrated: 2018.5.28
- Phantom: SAM1; Type: SAM; Serial: TP-1697
- Measurement SW: DASY52, Version 52.8 (8); SEMCAD X Version 14.6.10 (7372)

**Ch21350/Area Scan (81x81x1):** Interpolated grid: dx=1.200 mm, dy=1.200 mm  
Maximum value of SAR (interpolated) = 7.38 W/kg

**Ch21350/Zoom Scan (7x7x7)/Cube 0:** Measurement grid: dx=5mm, dy=5mm, dz=5mm  
Reference Value = 65.06 V/m; Power Drift = -0.04 dB  
Peak SAR (extrapolated) = 11.3 W/kg  
**SAR(1 g) = 5.5 W/kg; SAR(10 g) = 2.8 W/kg**  
Maximum value of SAR (measured) = 8.97 W/kg



0 dB = 7.38 W/kg = 8.68 dBW/kg