



**1. External Photograph of EUT**

**Brand Name: Motorola / Model Name: XT1965-T**

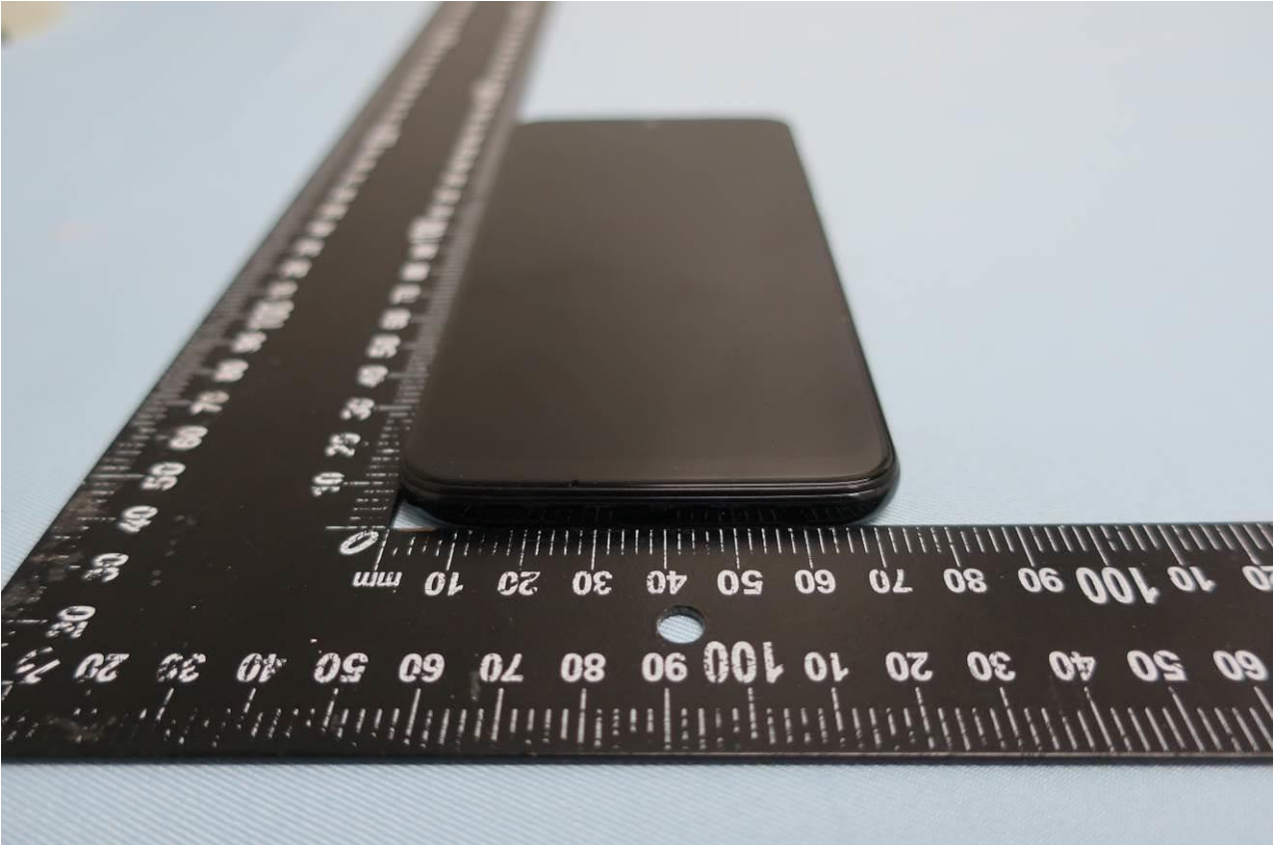




**Brand Name: Motorola / Model Name: XT1965-T**



**Brand Name: Motorola / Model Name: XT1965-T**



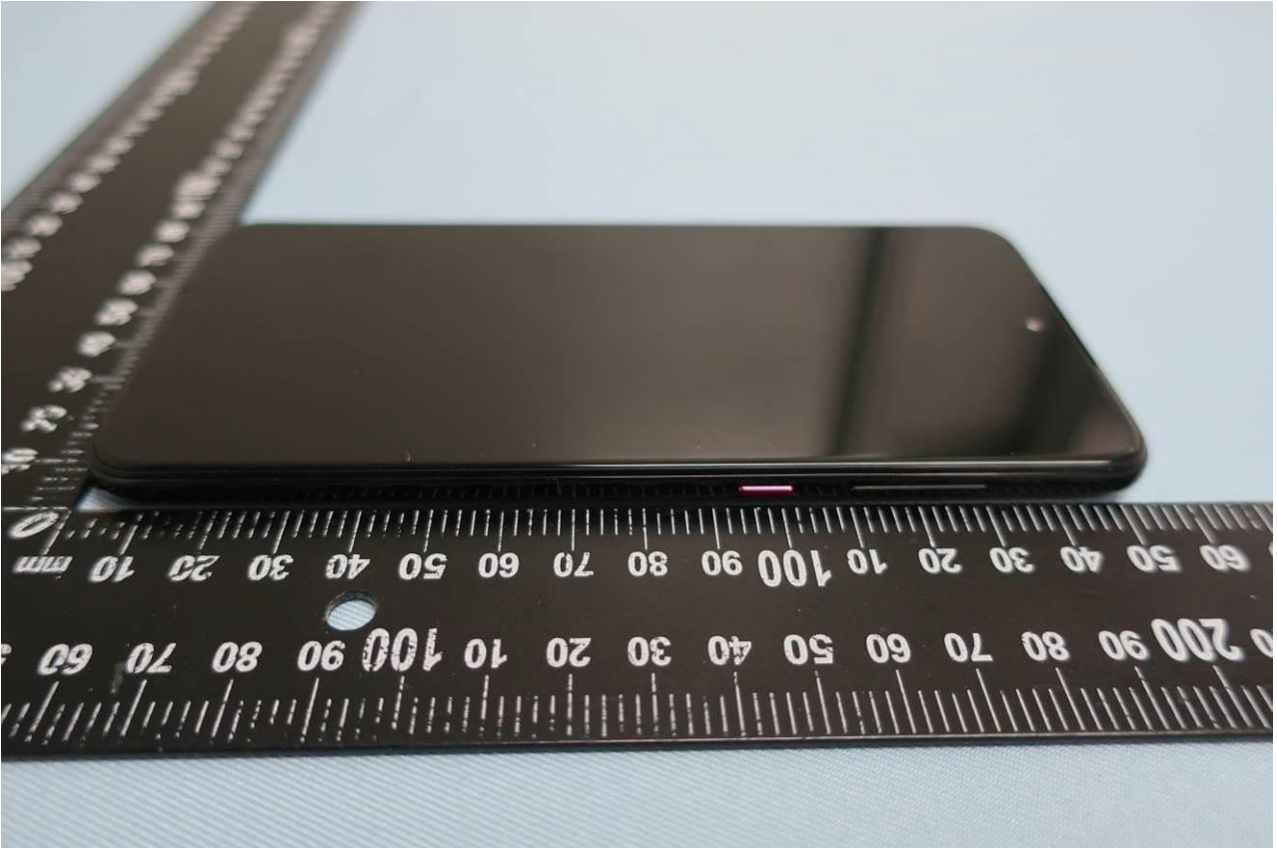


**Brand Name: Motorola / Model Name: XT1965-T**



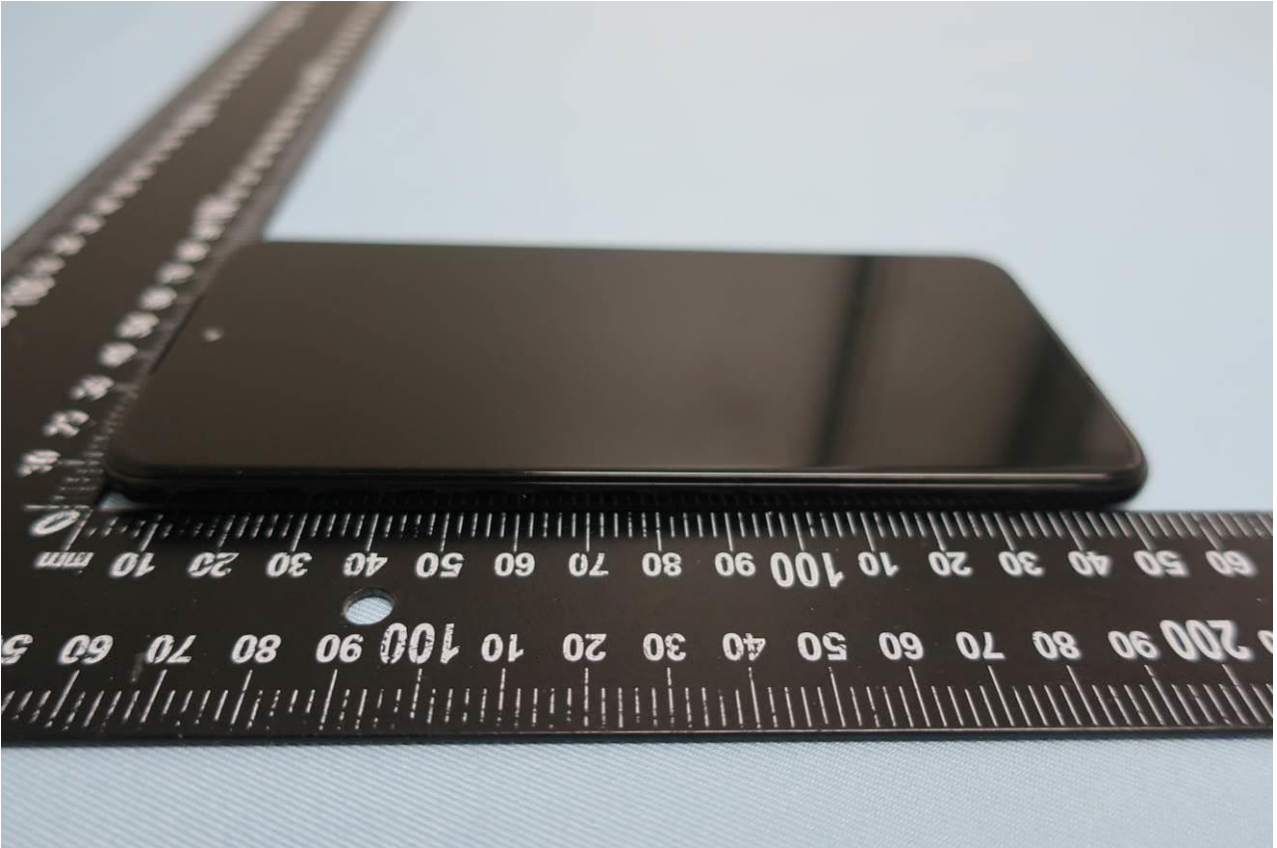


**Brand Name: Motorola / Model Name: XT1965-T**





**Brand Name: Motorola / Model Name: XT1965-T**





## 2. Photograph of Accessory

Brand Name: Motorola / Model Name: XT1965-T

### List of Accessory:

Specification of Accessory				
AC Adapter 1	Brand Name	Motorola (Salom)	Model Name	SC-31
	Power Rating	I/P: 100-240 Vac, 800mA ; O/P: 5Vdc,3000mA or 9Vdc,3000mA		
AC Adapter 2	Brand Name	Motorola (Acbel)	Model Name	SC-31
	Power Rating	I/P: 100-240 Vac, 800mA ; O/P: 5Vdc,3000mA or 9Vdc,3000mA		
Battery	Brand Name	Motorola(Amperex)	Model Name	JG40
	Power Rating	3.8Vdc, 2820/3000mAh (Rated/typ)	Type	Li-ion
USB Cable	Brand Name	Motorola (Cabletech)	Model Name	SC18C47591
	Signal Line Type	1.0 meter, shielded cable, without ferrite core		

Remark: For accessories equipped with this EUT, please refer to the following photos.

Brand Name: Motorola / Model Name: XT1965-T





Brand Name: Motorola / Model Name: XT1965-T

AC Adapter 1



Brand Name: Motorola / Model Name: XT1965-T

AC Adapter 2



Brand Name: Motorola / Model Name: XT1965-T



Brand Name: Motorola / Model Name: XT1965-T

