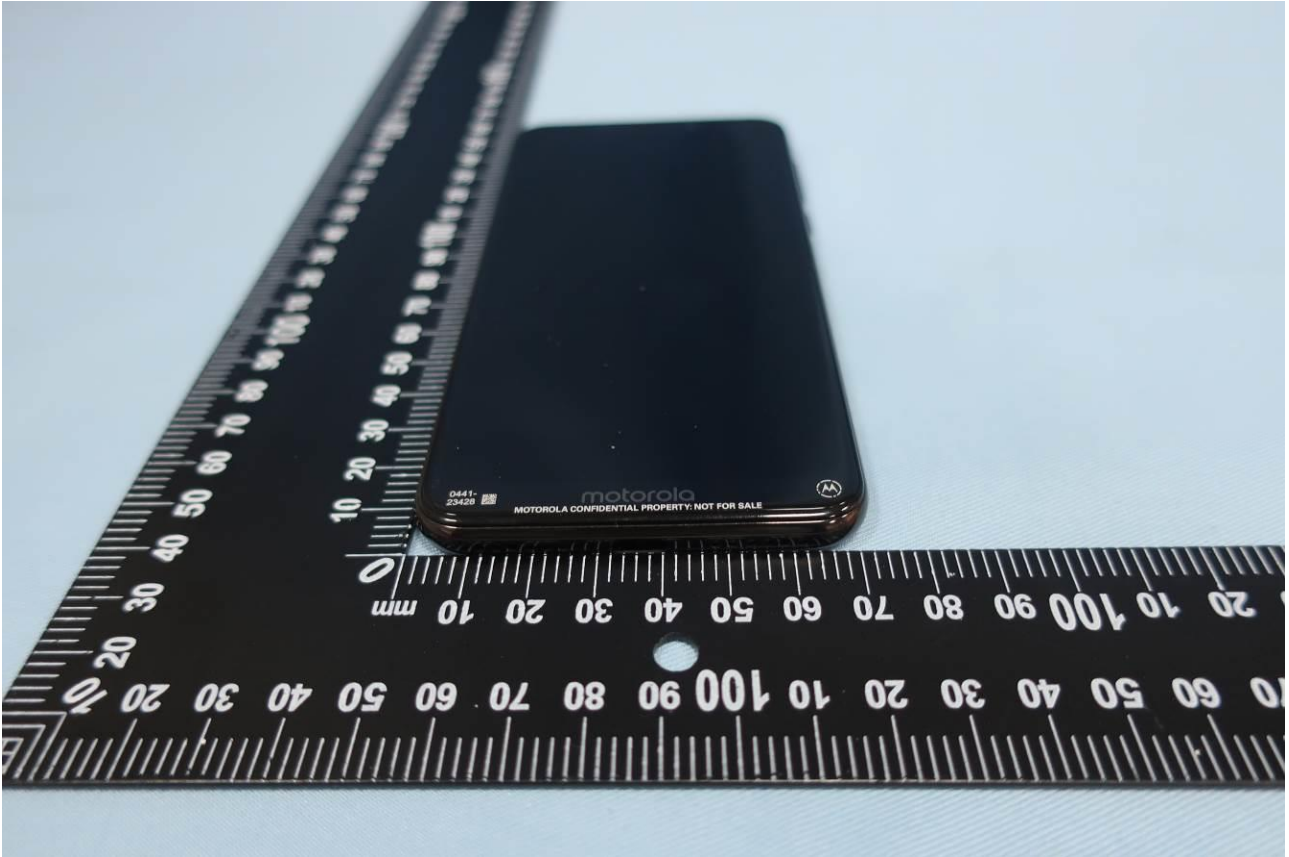


1. External Photograph of EUT

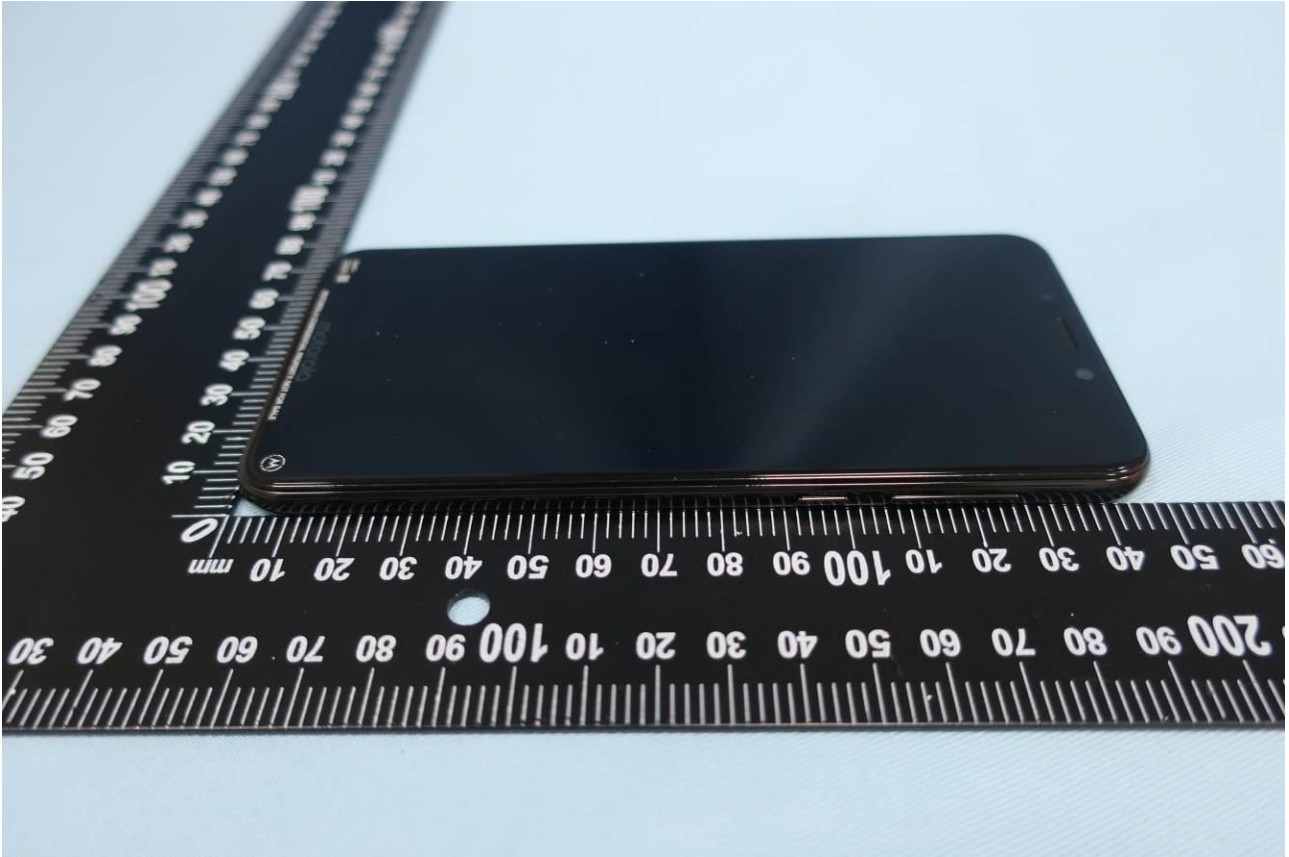
Brand Name: Motorola; Model Name: XT1941-5, XT1941-3



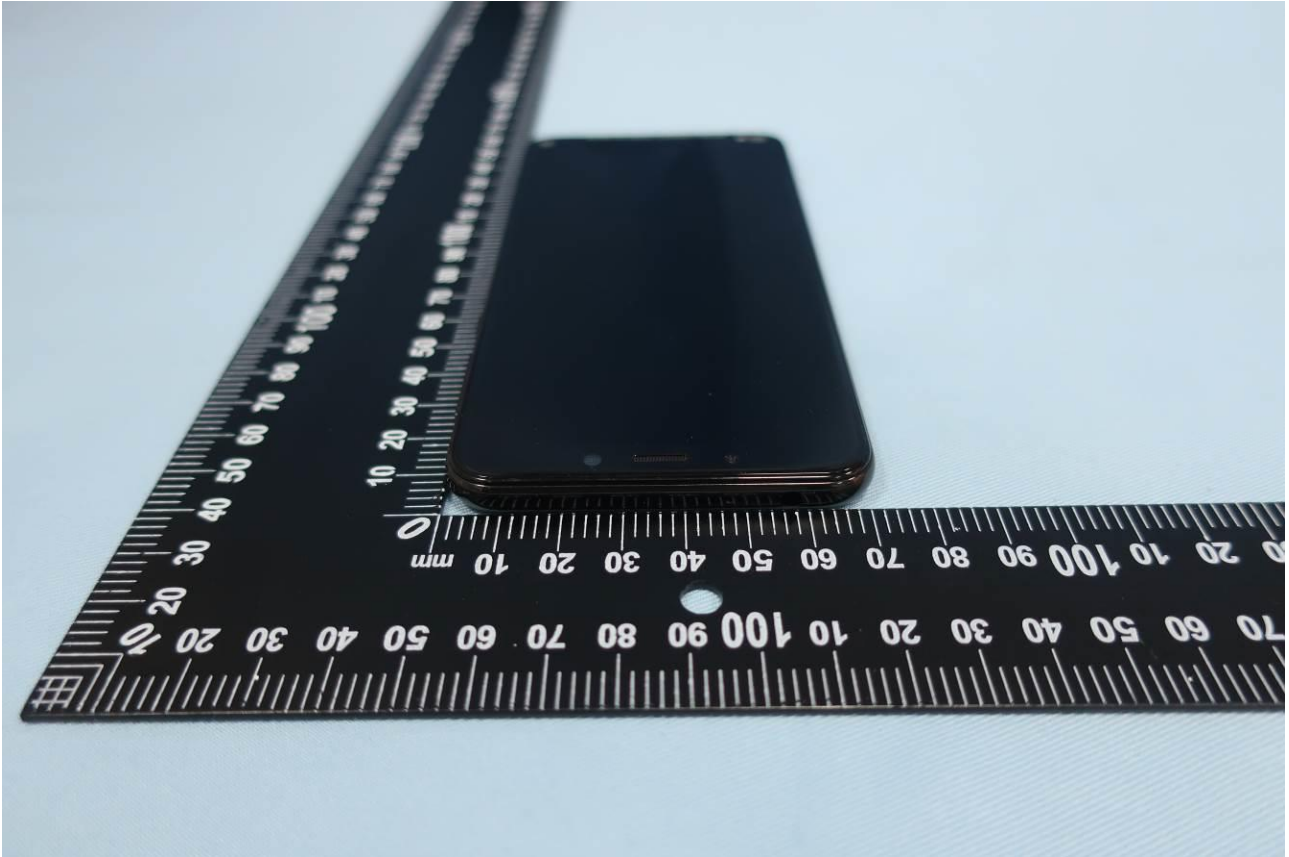
Brand Name: Motorola; Model Name: XT1941-5, XT1941-3



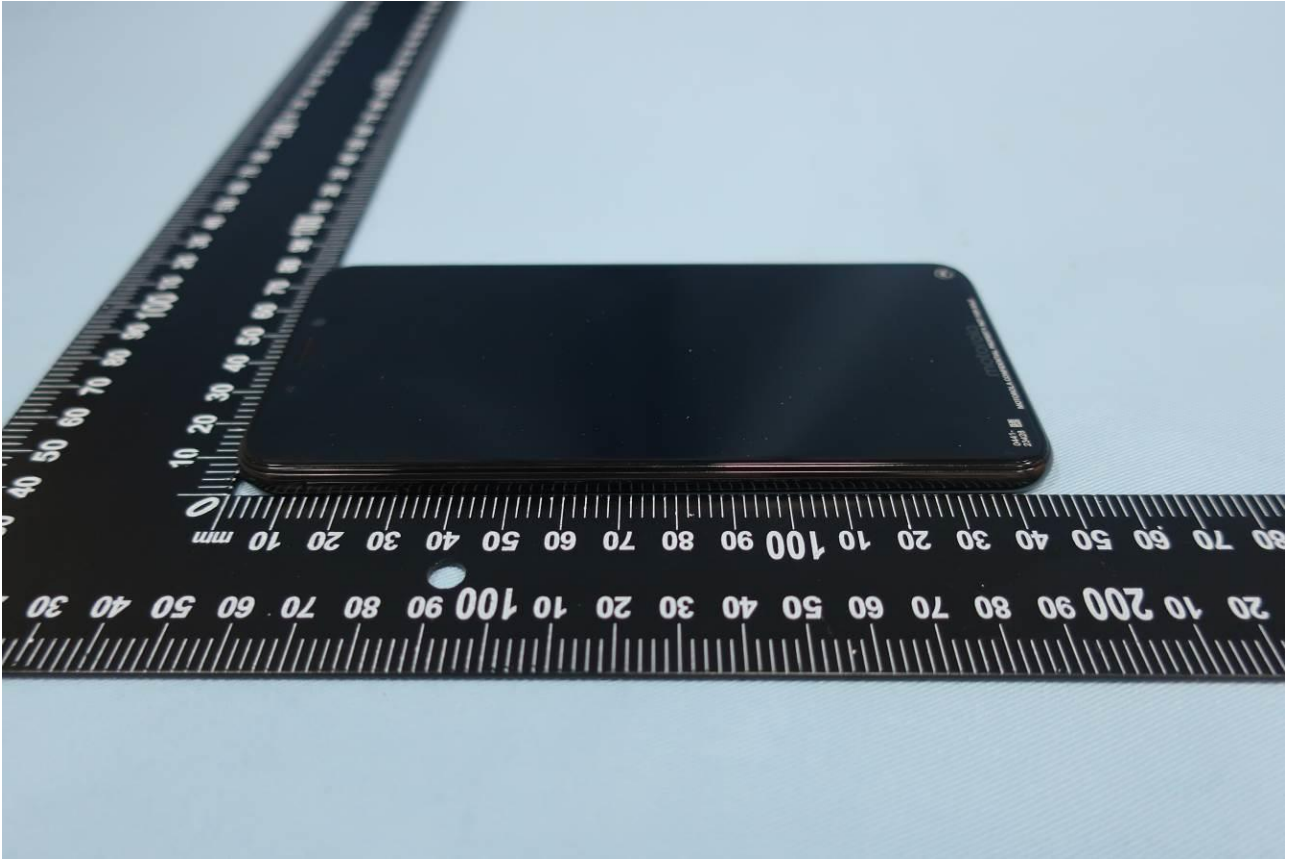
Brand Name: Motorola; Model Name: XT1941-5, XT1941-3



Brand Name: Motorola; Model Name: XT1941-5, XT1941-3



Brand Name: Motorola; Model Name: XT1941-5, XT1941-3





Brand Name: Motorola; Model Name: XT1941-5, XT1941-3





2. Photograph of Accessory

Brand Name: Motorola; Model Name: XT1941-5, XT1941-3

List of Accessory:

Specification of Accessory				
AC Adapter 1(US)	Brand Name	Motorola(Salom)	Model Name	SC-51
	Power Rating	I/P: 100-240 Vac, 600mA, O/P: 5/9/12 Vdc, 3000/2000/1500 mA		
AC Adapter 1(EU)	Brand Name	Motorola(Salom)	Model Name	SC-52
	Power Rating	I/P: 100-240 Vac, 600mA, O/P: 5/9/12 Vdc, 3000/2000/1500 mA		
AC Adapter 1(UK)	Brand Name	Motorola(Salom)	Model Name	SC-53
	Power Rating	I/P: 100-240 Vac, 600mA, O/P: 5/9/12 Vdc, 3000/2000/1500 mA		
AC Adapter 1(India)	Brand Name	Motorola(Salom)	Model Name	SC-54
	Power Rating	I/P: 100-240 Vac, 600mA, O/P: 5/9/12 Vdc, 3000/2000/1500 mA		
AC Adapter 1(AU)	Brand Name	Motorola(Salom)	Model Name	SC-55
	Power Rating	I/P: 100-240 Vac, 600mA, O/P: 5/9/12 Vdc, 3000/2000/1500 mA		
AC Adapter 1(AR)	Brand Name	Motorola(Salom)	Model Name	SC-56
	Power Rating	I/P: 100-240 Vac, 600mA, O/P: 5/9/12 Vdc, 3000/2000/1500 mA		
AC Adapter 1(BR)	Brand Name	Motorola(Salom)	Model Name	SC-57
	Power Rating	I/P: 100-240 Vac, 600mA, O/P: 5/9/12 Vdc, 3000/2000/1500 mA		
AC Adapter 1(PRC)	Brand Name	Motorola(Salom)	Model Name	SC-58
	Power Rating	I/P: 100-240 Vac, 600mA, O/P: 5/9/12 Vdc, 3000/2000/1500 mA		
AC Adapter 1(Chile)	Brand Name	Motorola(Salom)	Model Name	SC-52
	Power Rating	I/P: 100-240 Vac, 600mA, O/P: 5/9/12 Vdc, 3000/2000/1500 mA		
AC Adapter 2(US)	Brand Name	Motorola(chenyang)	Model Name	SC-51
	Power Rating	I/P: 100-240 Vac, 600mA, O/P: 5/9/12 Vdc, 3000/2000/1500 mA		
AC Adapter 2(EU)	Brand Name	Motorola(chenyang)	Model Name	SC-52
	Power Rating	I/P: 100-240 Vac, 600mA, O/P: 5/9/12 Vdc, 3000/2000/1500 mA		
AC Adapter 2(UK)	Brand Name	Motorola(chenyang)	Model Name	SC-53
	Power Rating	I/P: 100-240 Vac, 600mA, O/P: 5/9/12 Vdc, 3000/2000/1500 mA		
AC Adapter 2(AU)	Brand Name	Motorola(chenyang)	Model Name	SC-55
	Power Rating	I/P: 100-240 Vac, 600mA, O/P: 5/9/12 Vdc, 3000/2000/1500 mA		
AC Adapter 2(AR)	Brand Name	Motorola(chenyang)	Model Name	SC-56
	Power Rating	I/P: 100-240 Vac, 600mA, O/P: 5/9/12 Vdc, 3000/2000/1500 mA		
AC Adapter 2(PRC)	Brand Name	Motorola(chenyang)	Model Name	SC-58
	Power Rating	I/P: 100-240 Vac, 600mA, O/P: 5/9/12 Vdc, 3000/2000/1500 mA		
AC Adapter 3(BR)	Brand Name	Motorola(Salom/Flex)	Model Name	SC-57
	Power Rating	I/P: 100-240 Vac, 600mA, O/P: 5/9/12 Vdc, 3000/2000/1500 mA		
AC Adapter 4(BR)	Brand Name	Motorola (Tenpao/Cliptech)	Model Name	SC-57
	Power Rating	I/P: 100-240 Vac, 600mA, O/P: 5/9/12 Vdc, 3000/2000/1500 mA		



Brand Name: Motorola; Model Name: XT1941-5, XT1941-3

Battery	Brand Name	Motorola	Model Name	JE40
	Power Rating	3.8Vdc,2820mAh	Type	Li-ion
Earphone 1	Brand Name	Motorola (New Leader)	Model Name	NLD-EM307E-09SF
	Signal Line Type	1.2 meter, non-shielded cable, without ferrite core		
Earphone 2	Brand Name	Motorola	Model Name	SH38C16618 (L20)
	Signal Line Type	1.2 meter, non-shielded cable, without ferrite core		
USB Cable 1	Brand Name	Motorola (Liqi)	Model Name	LQ-03500079
	Signal Line Type	1.0 meter, shielded cable, without ferrite core		
USB Cable 2	Brand Name	Motorola (Saibao)	Model Name	SLQ-A1111A
	Signal Line Type	1.0 meter, shielded cable, without ferrite core		
USB Cable 3	Brand Name	Motorola (I SHENG)	Model Name	SC18C28955
	Signal Line Type	1.0 meter, shielded cable, without ferrite core		

**Remark:**

1. For accessories equipped with this EUT, please refer to the following photos.
2. For adapter1/2, there are different kinds of plugs that designed for different countries, the others are the same including circuit design, PCB board, structure and all components. So we evaluate it is not affect any test item, for FCC test, we only evaluate adapter 1 and 2 with the US plug and adapter 3/4 to test.



Brand Name: Motorola; Model Name: XT1941-5, XT1941-3



Brand Name: Motorola; Model Name: XT1941-5, XT1941-3

AC Adapter 1(US)



Brand Name: Motorola; Model Name: XT1941-5, XT1941-3

AC Adapter 1(EU)



Brand Name: Motorola; Model Name: XT1941-5, XT1941-3

AC Adapter 1(UK)



Brand Name: Motorola; Model Name: XT1941-5, XT1941-3

AC Adapter 1(India)



Brand Name: Motorola; Model Name: XT1941-5, XT1941-3

AC Adapter 1(AU)





Brand Name: Motorola; Model Name: XT1941-5, XT1941-3

AC Adapter 1(AR)



Brand Name: Motorola; Model Name: XT1941-5, XT1941-3

AC Adapter 1(BR)



Brand Name: Motorola; Model Name: XT1941-5, XT1941-3

AC Adapter 1(PRC)



Brand Name: Motorola; Model Name: XT1941-5, XT1941-3

AC Adapter 1(Chile)



Brand Name: Motorola; Model Name: XT1941-5, XT1941-3

AC Adapter 2(US)



Brand Name: Motorola; Model Name: XT1941-5, XT1941-3

AC Adapter 2(EU)





Brand Name: Motorola; Model Name: XT1941-5, XT1941-3

**AC Adapter 2(UK)**



Brand Name: Motorola; Model Name: XT1941-5, XT1941-3

AC Adapter 2(AU)



Brand Name: Motorola; Model Name: XT1941-5, XT1941-3

AC Adapter 2(AR)



Brand Name: Motorola; Model Name: XT1941-5, XT1941-3

AC Adapter 2(PRC)



Brand Name: Motorola; Model Name: XT1941-5, XT1941-3

AC Adapter 3(BR)



Brand Name: Motorola; Model Name: XT1941-5, XT1941-3

AC Adapter 4(BR)





Brand Name: Motorola; Model Name: XT1941-5, XT1941-3



Brand Name: Motorola; Model Name: XT1941-5, XT1941-3

