

#07_HAC_E_WLAN2.4GHz_802.11g_6Mbps_Ch1;with Wireless Charger Gen 2

Communication System: 802.11g ; Frequency: 2412 MHz;Duty Cycle: 1:12.5893

Medium: Air Medium parameters used: $\sigma = 0$ S/m, $\epsilon_r = 1$; $\rho = 0$ kg/m³

Ambient Temperature : 23.5 °C

DASY5 Configuration:

- Probe: EF3DV3 - SN4047; ConvF(1, 1, 1); Calibrated: 2018/1/8;
- Sensor-Surface: (Fix Surface)
- Electronics: DAE4 Sn853; Calibrated: 2017/7/19
- Phantom: HAC Test Arch with AMCC; Type: SD HAC P01 BA;
- Measurement SW: DASY52, Version 52.10 (0);SEMCAD X Version 14.6.10 (7417)

E Scan - ER3D: 15 mm from Probe Center to the Device/Hearing Aid Compatibility Test

(101x101x1): Interpolated grid: dx=0.5000 mm, dy=0.5000 mm

Device Reference Point: 0, 0, -6.3 mm

Reference Value = 32.49 V/m; Power Drift = 0.03 dB

Applied MIF = 0.12 dB

RF audio interference level = 29.43 dBV/m

Emission category: M4

MIF scaled E-field

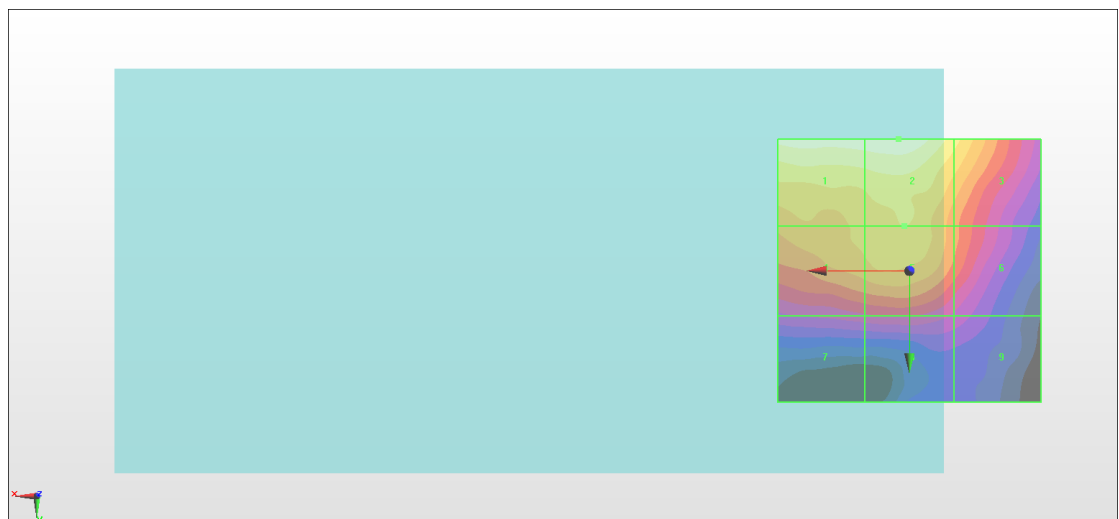
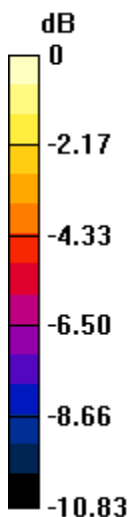
Grid 1 M4 29.25 dBV/m	Grid 2 M4 29.43 dBV/m	Grid 3 M4 27.58 dBV/m
Grid 4 M4 26.76 dBV/m	Grid 5 M4 27.28 dBV/m	Grid 6 M4 25.39 dBV/m
Grid 7 M4 23.54 dBV/m	Grid 8 M4 23.76 dBV/m	Grid 9 M4 22.8 dBV/m

Cursor:

Total = 29.43 dBV/m

E Category: M4

Location: 2, -25, 7.7 mm



0 dB = 29.61 V/m = 29.43 dBV/m