

#01_GSM850_GPRS (4 Tx slots)_Right Cheek_Ch189

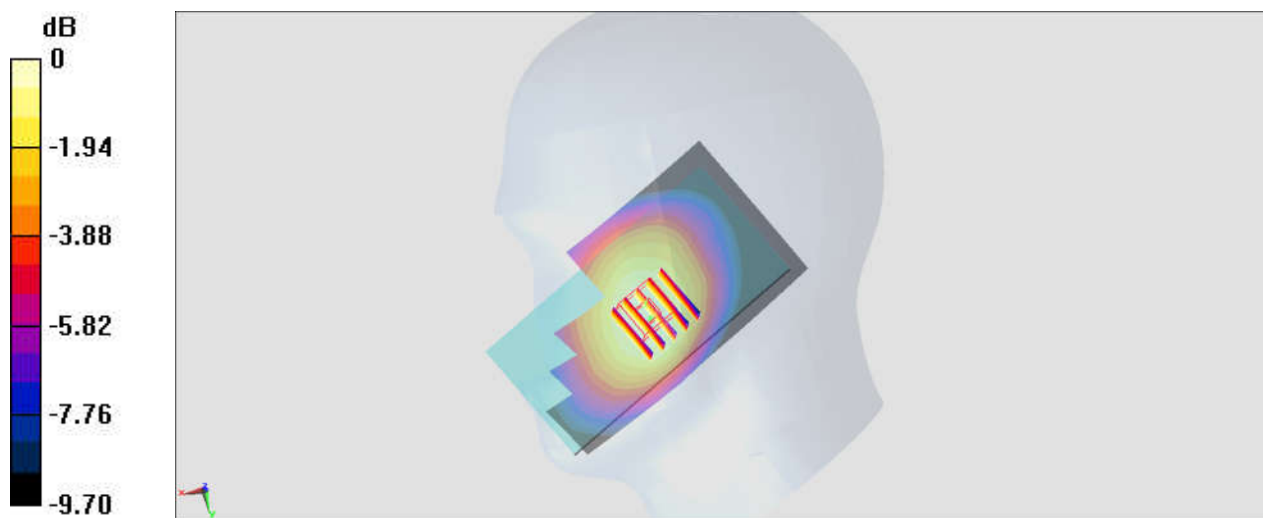
Communication System: GSM850; Frequency: 836.4 MHz; Duty Cycle: 1:2.08
Medium: HSL_850_180503 Medium parameters used: $f = 836.4$ MHz; $\sigma = 0.919$ S/m; $\epsilon_r = 41.449$;
 $\rho = 1000$ kg/m³
Ambient Temperature : 23.7 °C; Liquid Temperature : 22.7 °C

DASY5 Configuration:

- Probe: EX3DV4 - SN3931; ConvF(10.15, 10.15, 10.15); Calibrated: 2017/9/29;
- Sensor-Surface: 1.4mm (Mechanical Surface Detection)
- Electronics: DAE4 Sn1399; Calibrated: 2017/11/16
- Phantom: SAM-Right; Type: SAM; Serial: TP-1503
- Measurement SW: DASY52, Version 52.10 (0); SEMCAD X Version 14.6.10 (7417)

Area Scan (61x111x1): Interpolated grid: dx=1.500 mm, dy=1.500 mm
Maximum value of SAR (interpolated) = 0.415 W/kg

Zoom Scan (5x5x7)/Cube 0: Measurement grid: dx=8mm, dy=8mm, dz=5mm
Reference Value = 7.227 V/m; Power Drift = -0.02 dB
Peak SAR (extrapolated) = 0.433 W/kg
SAR(1 g) = 0.346 W/kg; SAR(10 g) = 0.268 W/kg
Maximum value of SAR (measured) = 0.402 W/kg



0 dB = 0.402 W/kg = -3.96 dBW/kg

#02_GSM1900_GPRS (4 Tx slots)_Right Cheek_Ch512

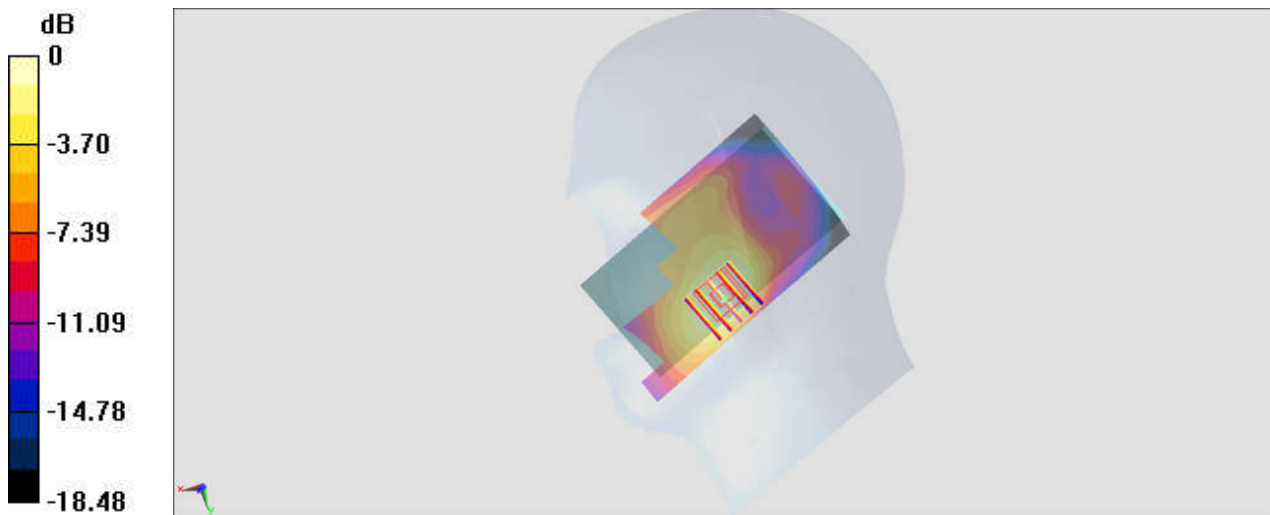
Communication System: PCS; Frequency: 1850.2 MHz; Duty Cycle: 1:2.08
Medium: HSL_1900_180503 Medium parameters used : $f = 1850.2$ MHz; $\sigma = 1.365$ S/m; $\epsilon_r = 40.803$; $\rho = 1000$ kg/m³
Ambient Temperature : 23.7 °C; Liquid Temperature : 22.7 °C

DASY5 Configuration:

- Probe: EX3DV4 - SN3931; ConvF(8.45, 8.45, 8.45); Calibrated: 2017/9/29;
- Sensor-Surface: 1.4mm (Mechanical Surface Detection)
- Electronics: DAE4 Sn1399; Calibrated: 2017/11/16
- Phantom: SAM_Left; Type: QD000P40CD; Serial: TP:1431
- Measurement SW: DASY52, Version 52.10 (0); SEMCAD X Version 14.6.10 (7417)

Area Scan (61x111x1): Interpolated grid: dx=1.500 mm, dy=1.500 mm
Maximum value of SAR (interpolated) = 0.254 W/kg

Zoom Scan (5x5x7)/Cube 0: Measurement grid: dx=8mm, dy=8mm, dz=5mm
Reference Value = 5.121 V/m; Power Drift = 0.08 dB
Peak SAR (extrapolated) = 0.285 W/kg
SAR(1 g) = 0.179 W/kg; SAR(10 g) = 0.110 W/kg
Maximum value of SAR (measured) = 0.244 W/kg



#03_WCDMA II_RMC 12.2Kbps_Right Cheek_Ch9400

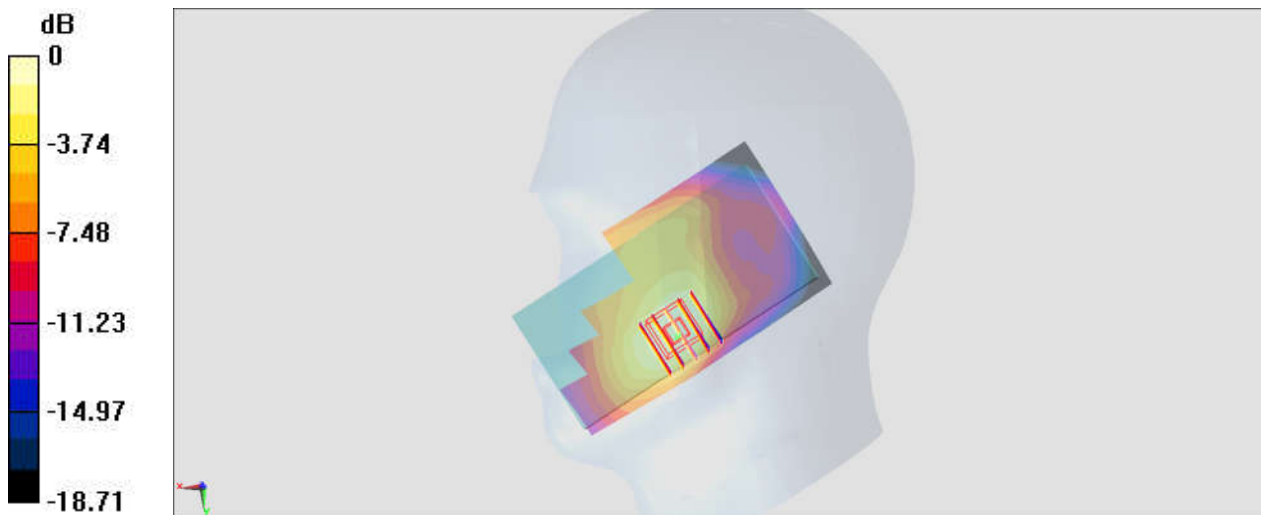
Communication System: WCDMA; Frequency: 1880 MHz; Duty Cycle: 1:1
Medium: HSL_1900_180503 Medium parameters used: $f = 1880$ MHz; $\sigma = 1.391$ S/m; $\epsilon_r = 40.699$;
 $\rho = 1000$ kg/m³
Ambient Temperature : 23.7 °C; Liquid Temperature : 22.7 °C

DASY5 Configuration:

- Probe: EX3DV4 - SN3931; ConvF(8.45, 8.45, 8.45); Calibrated: 2017/9/29;
- Sensor-Surface: 1.4mm (Mechanical Surface Detection)
- Electronics: DAE4 Sn1399; Calibrated: 2017/11/16
- Phantom: SAM_Left; Type: QD000P40CD; Serial: TP:1431
- Measurement SW: DASY52, Version 52.10 (0); SEMCAD X Version 14.6.10 (7417)

Area Scan (61x111x1): Interpolated grid: dx=1.500 mm, dy=1.500 mm
Maximum value of SAR (interpolated) = 0.545 W/kg

Zoom Scan (5x5x7)/Cube 0: Measurement grid: dx=8mm, dy=8mm, dz=5mm
Reference Value = 7.046 V/m; Power Drift = 0.06 dB
Peak SAR (extrapolated) = 0.631 W/kg
SAR(1 g) = 0.401 W/kg; SAR(10 g) = 0.248 W/kg
Maximum value of SAR (measured) = 0.536 W/kg



0 dB = 0.536 W/kg = -2.71 dBW/kg

#04_WCDMA V_RMC 12.2Kbps_Right Cheek_Ch4132

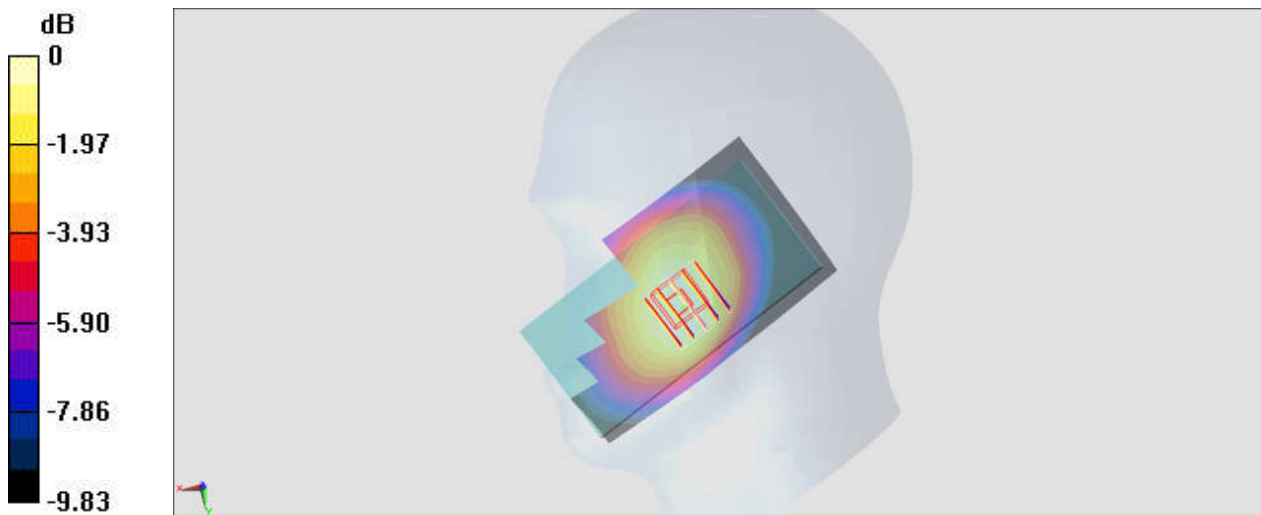
Communication System: WCDMA; Frequency: 826.4 MHz; Duty Cycle: 1:1
Medium: HSL_850_180503 Medium parameters used: $f = 826.4$ MHz; $\sigma = 0.91$ S/m; $\epsilon_r = 41.581$; $\rho = 1000$ kg/m³
Ambient Temperature : 23.7 °C; Liquid Temperature : 22.7 °C

DASY5 Configuration:

- Probe: EX3DV4 - SN3931; ConvF(10.15, 10.15, 10.15); Calibrated: 2017/9/29;
- Sensor-Surface: 1.4mm (Mechanical Surface Detection)
- Electronics: DAE4 Sn1399; Calibrated: 2017/11/16
- Phantom: SAM-Right; Type: SAM; Serial: TP-1503
- Measurement SW: DASY52, Version 52.10 (0); SEMCAD X Version 14.6.10 (7417)

Area Scan (61x111x1): Interpolated grid: dx=1.500 mm, dy=1.500 mm
Maximum value of SAR (interpolated) = 0.248 W/kg

Zoom Scan (5x5x7)/Cube 0: Measurement grid: dx=8mm, dy=8mm, dz=5mm
Reference Value = 5.725 V/m; Power Drift = -0.12 dB
Peak SAR (extrapolated) = 0.258 W/kg
SAR(1 g) = 0.204 W/kg; SAR(10 g) = 0.159 W/kg
Maximum value of SAR (measured) = 0.238 W/kg



0 dB = 0.238 W/kg = -6.23 dBW/kg

#05_LTE Band 5_10M_QPSK_1_25_Right Cheek_Ch20525

Communication System: LTE; Frequency: 836.5 MHz; Duty Cycle: 1:1

Medium: HSL_850_180503 Medium parameters used: $f = 836.5$ MHz; $\sigma = 0.919$ S/m; $\epsilon_r = 41.448$;

$\rho = 1000$ kg/m³

Ambient Temperature : 23.7 °C ; Liquid Temperature : 22.7 °C

DASY5 Configuration:

- Probe: EX3DV4 - SN3931; ConvF(10.15, 10.15, 10.15); Calibrated: 2017/9/29;
- Sensor-Surface: 1.4mm (Mechanical Surface Detection)
- Electronics: DAE4 Sn1399; Calibrated: 2017/11/16
- Phantom: SAM-Right; Type: SAM; Serial: TP-1503
- Measurement SW: DASY52, Version 52.10 (0); SEMCAD X Version 14.6.10 (7417)

Area Scan (61x111x1): Interpolated grid: dx=1.500 mm, dy=1.500 mm

Maximum value of SAR (interpolated) = 0.268 W/kg

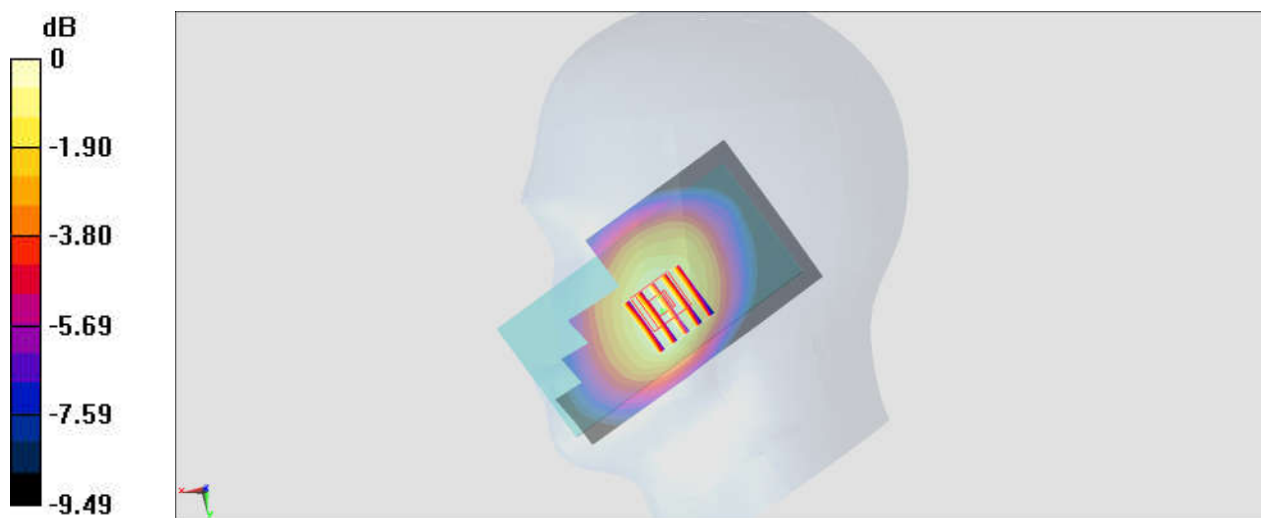
Zoom Scan (5x5x7)/Cube 0: Measurement grid: dx=8mm, dy=8mm, dz=5mm

Reference Value = 6.235 V/m; Power Drift = -0.10 dB

Peak SAR (extrapolated) = 0.296 W/kg

SAR(1 g) = 0.236 W/kg; SAR(10 g) = 0.183 W/kg

Maximum value of SAR (measured) = 0.274 W/kg



0 dB = 0.274 W/kg = -5.62 dBW/kg

#06_LTE Band 7_20M_QPSK_1_49_Left Cheek_Ch21350

Communication System: LTE; Frequency: 2560 MHz; Duty Cycle: 1:1

Medium: HSL_2600_180507 Medium parameters used: $f = 2560$ MHz; $\sigma = 1.88$ S/m; $\epsilon_r = 37.999$; $\rho = 1000$ kg/m³

Ambient Temperature : 23.3 °C ; Liquid Temperature : 22.3 °C

DASY5 Configuration:

- Probe: ES3DV3 - SN3169; ConvF(4.47, 4.47, 4.47); Calibrated: 2017/5/11;
- Sensor-Surface: 3mm (Mechanical Surface Detection)
- Electronics: DAE4 Sn853; Calibrated: 2017/7/19
- Phantom: SAM_Left; Type: QD000P40CD; Serial: TP:1431
- Measurement SW: DASY52, Version 52.10 (0); SEMCAD X Version 14.6.10 (7417)

Area Scan (81x141x1): Interpolated grid: dx=1.200 mm, dy=1.200 mm

Maximum value of SAR (interpolated) = 0.783 W/kg

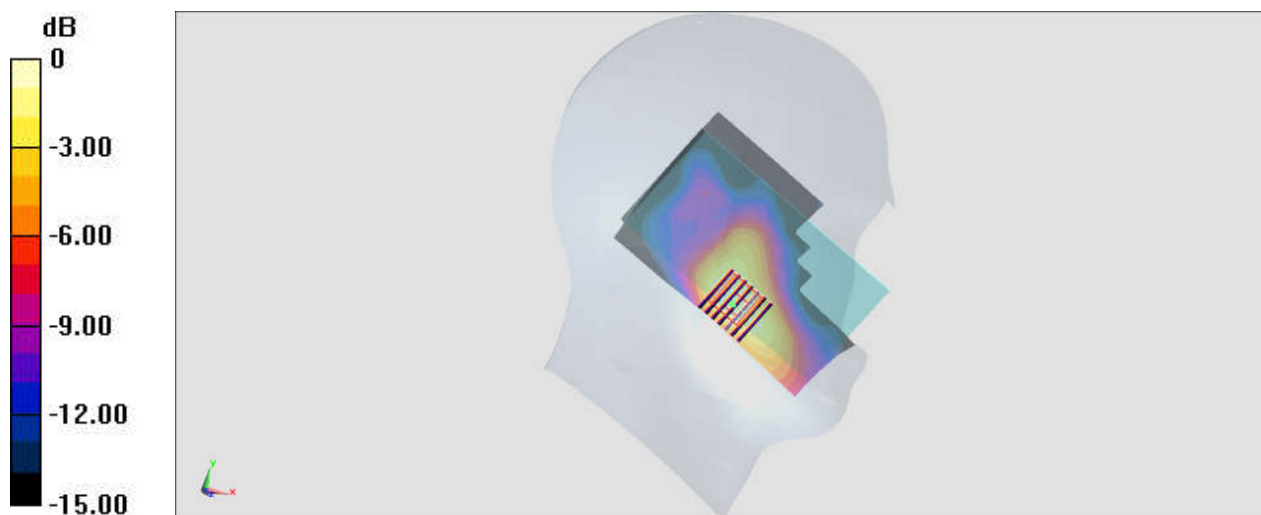
Zoom Scan (7x7x7)/Cube 0: Measurement grid: dx=5mm, dy=5mm, dz=5mm

Reference Value = 5.222 V/m; Power Drift = 0.12 dB

Peak SAR (extrapolated) = 1.32 W/kg

SAR(1 g) = 0.638 W/kg; SAR(10 g) = 0.332 W/kg

Maximum value of SAR (measured) = 0.803 W/kg



0 dB = 0.803 W/kg = -0.95 dBW/kg

#07_LTE Band 41_20M_QPSK_1_49_Left Cheek_Ch40400

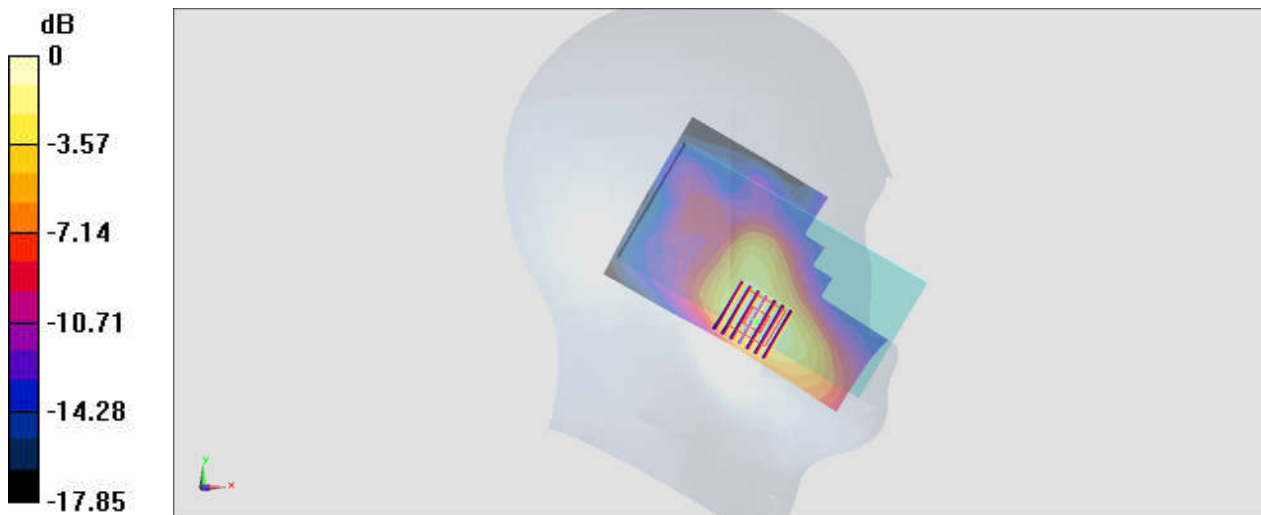
Communication System: LTE ; Frequency: 2571 MHz;Duty Cycle: 1:1.59
Medium: HSL_2600_180507 Medium parameters used : $f = 2571$ MHz; $\sigma = 1.891$ S/m; $\epsilon_r = 37.951$;
 $\rho = 1000$ kg/m³
Ambient Temperature : 23.3 °C ; Liquid Temperature : 22.3 °C

DASY5 Configuration:

- Probe: ES3DV3 - SN3169; ConvF(4.47, 4.47, 4.47); Calibrated: 2017/5/11;
- Sensor-Surface: 3mm (Mechanical Surface Detection)
- Electronics: DAE4 Sn853; Calibrated: 2017/7/19
- Phantom: SAM_Left; Type: QD000P40CD; Serial: TP:1431
- Measurement SW: DASY52, Version 52.10 (0);SEMCAD X Version 14.6.10 (7417)

Area Scan (81x141x1): Interpolated grid: dx=1.200 mm, dy=1.200 mm
Maximum value of SAR (interpolated) = 0.487 W/kg

Zoom Scan (7x7x7)/Cube 0: Measurement grid: dx=5mm, dy=5mm, dz=5mm
Reference Value = 4.284 V/m; Power Drift = 0.12 dB
Peak SAR (extrapolated) = 0.809 W/kg
SAR(1 g) = 0.394 W/kg; SAR(10 g) = 0.206 W/kg
Maximum value of SAR (measured) = 0.500 W/kg



#08_WLAN2.4GHz_802.11b 1Mbps_Left Cheek_Ch11

Communication System: 802.11b ; Frequency: 2462 MHz;Duty Cycle: 1:1.025

Medium: HSL_2450_180510 Medium parameters used: $f = 2462$ MHz; $\sigma = 1.802$ S/m; $\epsilon_r = 38.477$; $\rho = 1000$ kg/m³

Ambient Temperature : 23.4 °C ; Liquid Temperature : 22.4 °C

DASY5 Configuration:

- Probe: ES3DV3 - SN3270; ConvF(4.75, 4.75, 4.75); Calibrated: 2017/9/25;
- Sensor-Surface: 3mm (Mechanical Surface Detection)
- Electronics: DAE4 Sn778; Calibrated: 2017/5/22
- Phantom: SAM_Left; Type: QD000P40CD; Serial: TP:1477
- Measurement SW: DASY52, Version 52.10 (0);SEMCAD X Version 14.6.10 (7417)

Area Scan (81x141x1): Interpolated grid: dx=1.200 mm, dy=1.200 mm

Maximum value of SAR (interpolated) = 1.14 W/kg

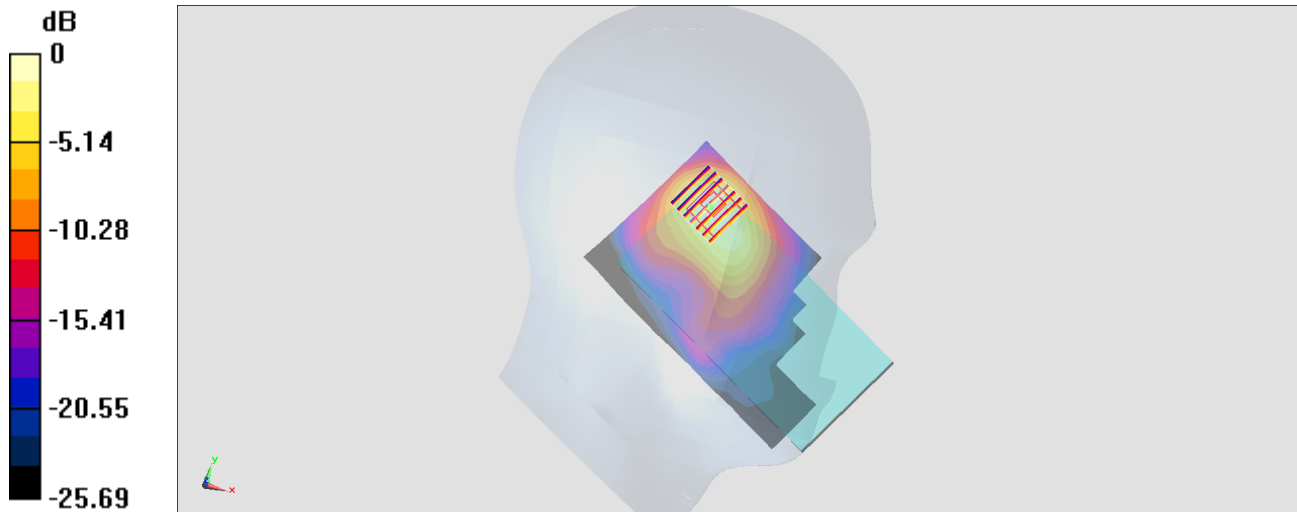
Zoom Scan (7x7x7)/Cube 0: Measurement grid: dx=5mm, dy=5mm, dz=5mm

Reference Value = 19.34 V/m; Power Drift = 0.17 dB

Peak SAR (extrapolated) = 1.75 W/kg

SAR(1 g) = 0.870 W/kg; SAR(10 g) = 0.428 W/kg

Maximum value of SAR (measured) = 1.10 W/kg



0 dB = 1.10 W/kg = 0.41 dBW/kg

#09_Bluetooth_1Mbps_Left Cheek_Ch39

Communication System: Bluetooth; Frequency: 2441 MHz; Duty Cycle: 1:1.299

Medium: HSL_2450_180515 Medium parameters used: $f = 2441$ MHz; $\sigma = 1.825$ S/m; $\epsilon_r = 38.753$; $\rho = 1000$ kg/m³

Ambient Temperature : 23.6 °C ; Liquid Temperature : 22.6 °C

DASY5 Configuration:

- Probe: EX3DV4 - SN3925; ConvF(7.85, 7.85, 7.85); Calibrated: 2017/5/24;
- Sensor-Surface: 1.4mm (Mechanical Surface Detection)
- Electronics: DAE4 Sn1424; Calibrated: 2018/1/18
- Phantom: SAM_Right; Type: QD000P40CD; Serial: 1884
- Measurement SW: DASY52, Version 52.10 (1); SEMCAD X Version 14.6.11 (7437)

Area Scan (81x151x1): Interpolated grid: dx=1.200 mm, dy=1.200 mm

Maximum value of SAR (interpolated) = 0.258 W/kg

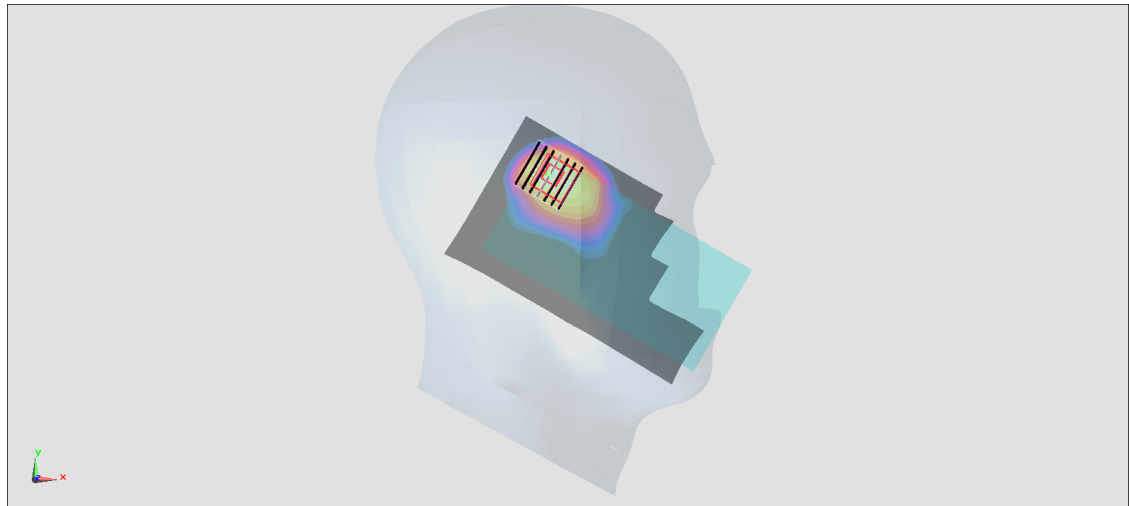
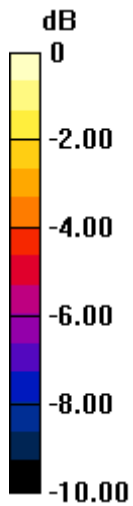
Zoom Scan (7x7x7)/Cube 0: Measurement grid: dx=5mm, dy=5mm, dz=5mm

Reference Value = 9.730 V/m; Power Drift = -0.15 dB

Peak SAR (extrapolated) = 0.370 W/kg

SAR(1 g) = 0.199 W/kg; SAR(10 g) = 0.104 W/kg

Maximum value of SAR (measured) = 0.247 W/kg



0 dB = 0.247 W/kg = -6.07 dBW/kg

#10_GSM850_GPRS (4 Tx slots)_Back_5mm_Ch251

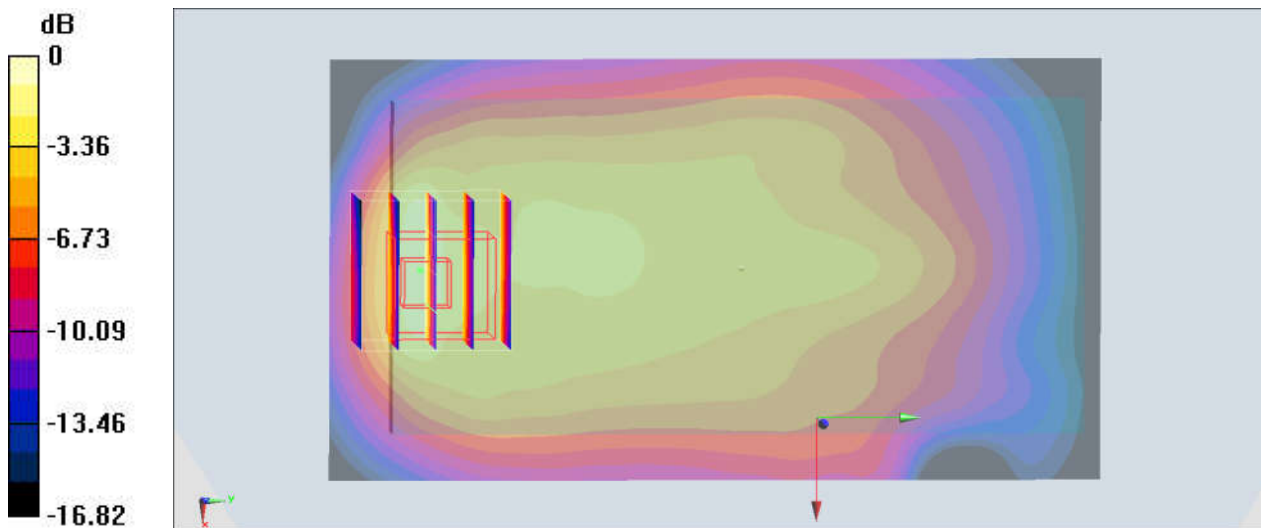
Communication System: GSM850 ; Frequency: 848.8 MHz;Duty Cycle: 1:2.08
Medium: MSL_850_180512 Medium parameters used: $f = 849$ MHz; $\sigma = 0.97$ S/m; $\epsilon_r = 55.047$; $\rho = 1000$ kg/m³
Ambient Temperature : 23.6 °C ; Liquid Temperature : 22.6 °C

DASY5 Configuration:

- Probe: ES3DV3 - SN3270; ConvF(6.09, 6.09, 6.09); Calibrated: 2017/9/25;
- Sensor-Surface: 3mm (Mechanical Surface Detection)
- Electronics: DAE4 Sn853; Calibrated: 2017/7/19
- Phantom: SAM_Left; Type: QD000P40CD; Serial: TP:1431
- Measurement SW: DASY52, Version 52.10 (0);SEMCAD X Version 14.6.10 (7417)

Area Scan (61x111x1): Interpolated grid: $dx=1.500$ mm, $dy=1.500$ mm
Maximum value of SAR (interpolated) = 0.835 W/kg

Zoom Scan (5x5x7)/Cube 0: Measurement grid: $dx=8$ mm, $dy=8$ mm, $dz=5$ mm
Reference Value = 22.64 V/m; Power Drift = 0.14 dB
Peak SAR (extrapolated) = 1.62 W/kg
SAR(1 g) = 0.808 W/kg; SAR(10 g) = 0.417 W/kg
Maximum value of SAR (measured) = 1.09 W/kg



0 dB = 1.09 W/kg = 0.37 dBW/kg

#11_GSM1900_GPRS (4 Tx slots)_Back_5mm_Ch810

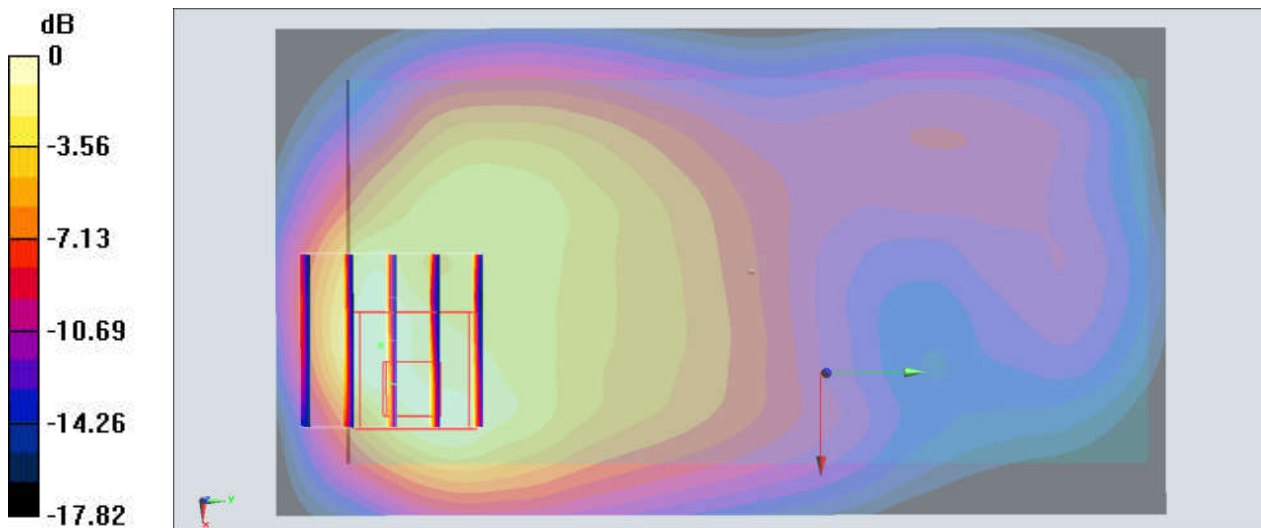
Communication System: PCS; Frequency: 1909.8 MHz; Duty Cycle: 1:2.08
Medium: MSL_1900_180514 Medium parameters used: $f = 1910$ MHz; $\sigma = 1.589$ S/m; $\epsilon_r = 53.566$;
 $\rho = 1000$ kg/m³
Ambient Temperature : 23.5 °C ; Liquid Temperature : 22.5 °C

DASY5 Configuration:

- Probe: ES3DV3 - SN3270; ConvF(4.9, 4.9, 4.9); Calibrated: 2017/9/25;
- Sensor-Surface: 3mm (Mechanical Surface Detection)
- Electronics: DAE4 Sn853; Calibrated: 2017/7/19
- Phantom: SAM-Right; Type: SAM; Serial: TP-1503
- Measurement SW: DASY52, Version 52.10 (0); SEMCAD X Version 14.6.10 (7417)

Area Scan (61x111x1): Interpolated grid: dx=1.500 mm, dy=1.500 mm
Maximum value of SAR (interpolated) = 1.31 W/kg

Zoom Scan (5x5x7)/Cube 0: Measurement grid: dx=8mm, dy=8mm, dz=5mm
Reference Value = 22.10 V/m; Power Drift = -0.10 dB
Peak SAR (extrapolated) = 1.74 W/kg
SAR(1 g) = 0.845 W/kg; SAR(10 g) = 0.420 W/kg
Maximum value of SAR (measured) = 1.06 W/kg



0 dB = 1.06 W/kg = 0.25 dBW/kg

#12_WCDMA II_RMC 12.2Kbps_Back_5mm_Ch9400

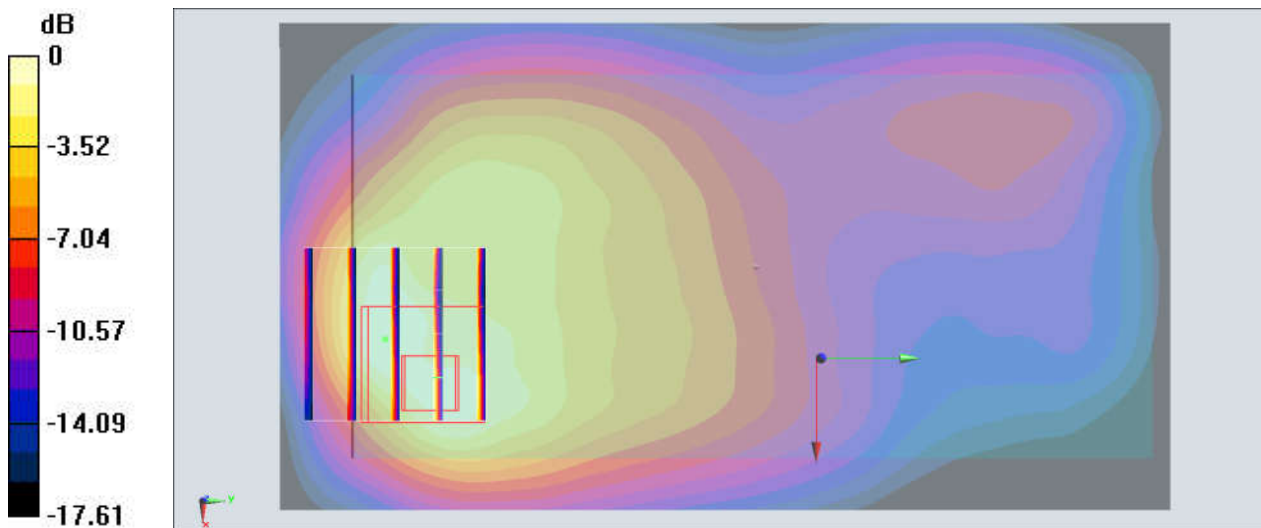
Communication System: WCDMA; Frequency: 1880 MHz; Duty Cycle: 1:1
Medium: MSL_1900_180514 Medium parameters used: $f = 1880$ MHz; $\sigma = 1.555$ S/m; $\epsilon_r = 53.65$; $\rho = 1000$ kg/m³
Ambient Temperature : 23.5 °C; Liquid Temperature : 22.5 °C

DASY5 Configuration:

- Probe: ES3DV3 - SN3270; ConvF(4.9, 4.9, 4.9); Calibrated: 2017/9/25;
- Sensor-Surface: 3mm (Mechanical Surface Detection)
- Electronics: DAE4 Sn853; Calibrated: 2017/7/19
- Phantom: SAM-Right; Type: SAM; Serial: TP-1503
- Measurement SW: DASY52, Version 52.10 (0); SEMCAD X Version 14.6.10 (7417)

Area Scan (61x111x1): Interpolated grid: dx=1.500 mm, dy=1.500 mm
Maximum value of SAR (interpolated) = 1.45 W/kg

Zoom Scan (5x5x7)/Cube 0: Measurement grid: dx=8mm, dy=8mm, dz=5mm
Reference Value = 26.39 V/m; Power Drift = -0.05 dB
Peak SAR (extrapolated) = 2.02 W/kg
SAR(1 g) = 1.02 W/kg; SAR(10 g) = 0.507 W/kg
Maximum value of SAR (measured) = 1.31 W/kg



0 dB = 1.31 W/kg = 1.17 dBW/kg

#13_WCDMA V_RMC 12.2Kbps_Back_5mm_Ch4233

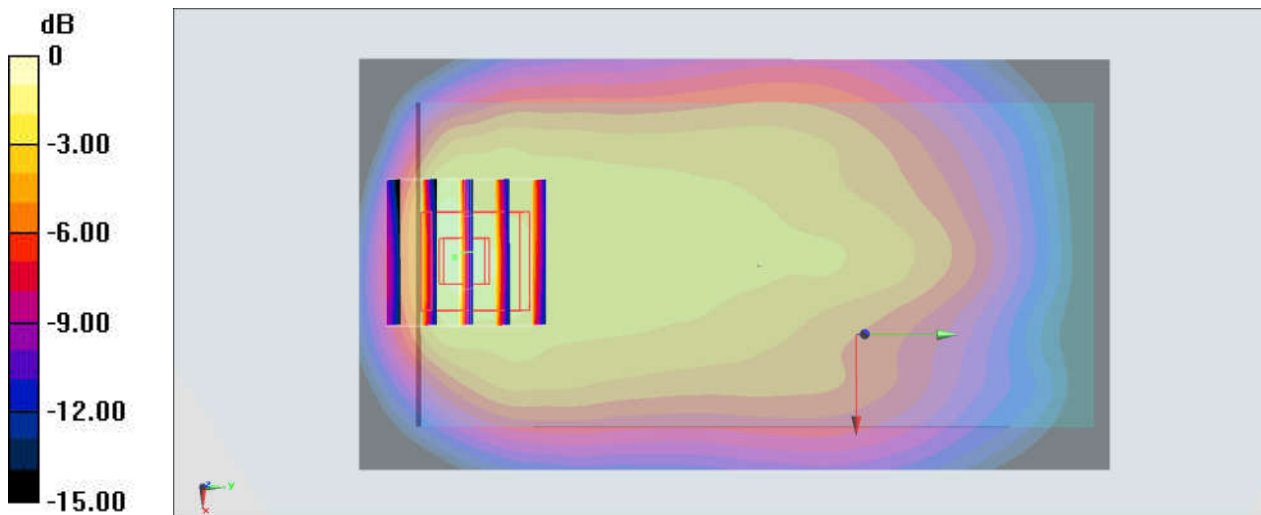
Communication System: WCDMA; Frequency: 846.6 MHz; Duty Cycle: 1:1
Medium: MSL_850_180508 Medium parameters used: $f = 847$ MHz; $\sigma = 0.972$ S/m; $\epsilon_r = 55.122$; $\rho = 1000$ kg/m³
Ambient Temperature : 23.7 °C; Liquid Temperature : 22.7 °C

DASY5 Configuration:

- Probe: ES3DV3 - SN3169; ConvF(6.05, 6.05, 6.05); Calibrated: 2017/5/11;
- Sensor-Surface: 3mm (Mechanical Surface Detection)
- Electronics: DAE4 Sn853; Calibrated: 2017/7/19
- Phantom: SAM-Right; Type: SAM; Serial: TP-1503
- Measurement SW: DASY52, Version 52.10 (0); SEMCAD X Version 14.6.10 (7417)

Area Scan (61x111x1): Interpolated grid: dx=1.500 mm, dy=1.500 mm
Maximum value of SAR (interpolated) = 0.913 W/kg

Zoom Scan (5x5x7)/Cube 0: Measurement grid: dx=8mm, dy=8mm, dz=5mm
Reference Value = 27.08 V/m; Power Drift = 0.01 dB
Peak SAR (extrapolated) = 1.89 W/kg
SAR(1 g) = 0.950 W/kg; SAR(10 g) = 0.490 W/kg
Maximum value of SAR (measured) = 1.29 W/kg



0 dB = 1.29 W/kg = 1.11 dBW/kg

#14_LTE Band 5_10M_QPSK_1_25_Back_5mm_Ch20525

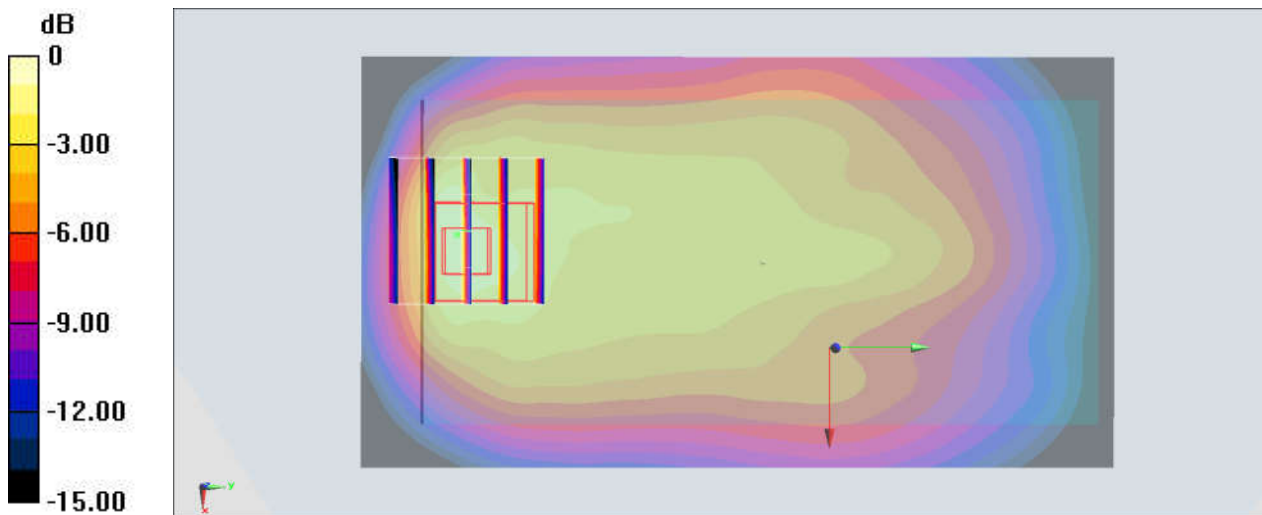
Communication System: LTE ; Frequency: 836.5 MHz;Duty Cycle: 1:1
Medium: MSL_850_180508 Medium parameters used : $f = 836.5$ MHz; $\sigma = 0.962$ S/m; $\epsilon_r = 55.222$;
 $\rho = 1000$ kg/m³
Ambient Temperature : 23.7 °C ; Liquid Temperature : 22.7 °C

DASY5 Configuration:

- Probe: ES3DV3 - SN3169; ConvF(6.05, 6.05, 6.05); Calibrated: 2017/5/11;
- Sensor-Surface: 3mm (Mechanical Surface Detection)
- Electronics: DAE4 Sn853; Calibrated: 2017/7/19
- Phantom: SAM-Right; Type: SAM; Serial: TP-1503
- Measurement SW: DASY52, Version 52.10 (0);SEMCAD X Version 14.6.10 (7417)

Area Scan (61x111x1): Interpolated grid: dx=1.500 mm, dy=1.500 mm
Maximum value of SAR (interpolated) = 0.862 W/kg

Zoom Scan (5x5x7)/Cube 0: Measurement grid: dx=8mm, dy=8mm, dz=5mm
Reference Value = 26.39 V/m; Power Drift = -0.09 dB
Peak SAR (extrapolated) = 1.75 W/kg
SAR(1 g) = 0.881 W/kg; SAR(10 g) = 0.460 W/kg
Maximum value of SAR (measured) = 1.16 W/kg



0 dB = 1.16 W/kg = 0.64 dBW/kg

#15_LTE Band 7_20M_QPSK_1_49_Back_5mm_Ch20850

Communication System: LTE ; Frequency: 2510 MHz;Duty Cycle: 1:1

Medium: MSL_2600_180513 Medium parameters used: $f = 2510$ MHz; $\sigma = 2.042$ S/m; $\epsilon_r = 51.827$; $\rho = 1000$ kg/m³

Ambient Temperature : 23.7 °C ; Liquid Temperature : 22.7 °C

DASY5 Configuration:

- Probe: EX3DV4 - SN3931; ConvF(7.45, 7.45, 7.45); Calibrated: 2017/9/29;
- Sensor-Surface: 1.4mm (Mechanical Surface Detection)
- Electronics: DAE4 Sn1399; Calibrated: 2017/11/16
- Phantom: SAM LEFT; Type: QD000P40CD; Serial: TP:1718
- Measurement SW: DASY52, Version 52.10 (0);SEMCAD X Version 14.6.10 (7417)

Area Scan (81x141x1): Interpolated grid: dx=1.200 mm, dy=1.200 mm

Maximum value of SAR (interpolated) = 1.60 W/kg

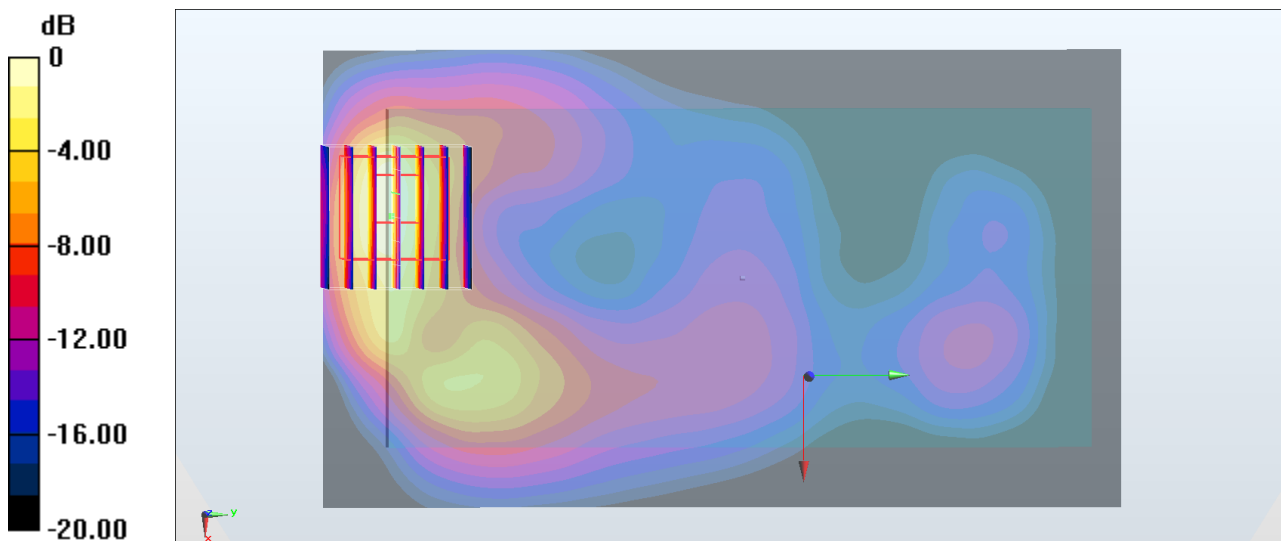
Zoom Scan (7x7x7)/Cube 0: Measurement grid: dx=5mm, dy=5mm, dz=5mm

Reference Value = 14.43 V/m; Power Drift = -0.19 dB

Peak SAR (extrapolated) = 2.61 W/kg

SAR(1 g) = 1.15 W/kg; SAR(10 g) = 0.447 W/kg

Maximum value of SAR (measured) = 1.95 W/kg



0 dB = 1.60 W/kg = 2.04 dBW/kg

#16_LTE Band 41_20M_QPSK_1_49_Back_5mm_Ch40140

Communication System: LTE TDD ; Frequency: 2545 MHz;Duty Cycle: 1:1.59

Medium: MSL_2600_180513 Medium parameters used: $f = 2546$ MHz; $\sigma = 2.09$ S/m; $\epsilon_r = 51.687$; $\rho = 1000$ kg/m³

Ambient Temperature : 23.7 °C ; Liquid Temperature : 22.7 °C

DASY5 Configuration:

- Probe: EX3DV4 - SN3931; ConvF(7.45, 7.45, 7.45); Calibrated: 2017/9/29;
- Sensor-Surface: 1.4mm (Mechanical Surface Detection)
- Electronics: DAE4 Sn1399; Calibrated: 2017/11/16
- Phantom: SAM LEFT; Type: QD000P40CD; Serial: TP:1718
- Measurement SW: DASY52, Version 52.10 (0);SEMCAD X Version 14.6.10 (7417)

Area Scan (81x81x1): Interpolated grid: dx=1.200 mm, dy=1.200 mm

Maximum value of SAR (interpolated) = 1.23 W/kg

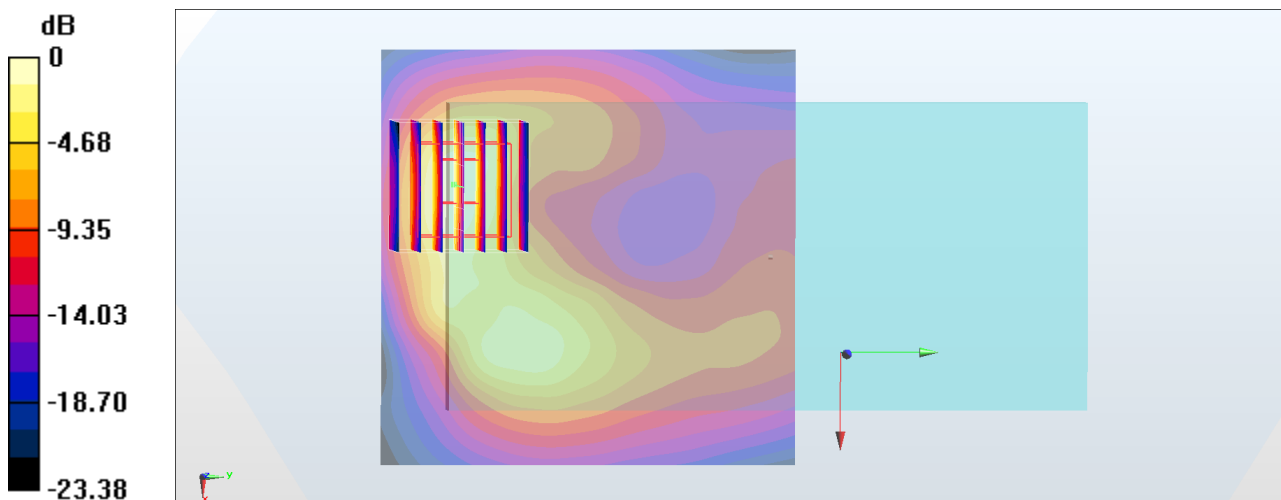
Zoom Scan (7x7x7)/Cube 0: Measurement grid: dx=5mm, dy=5mm, dz=5mm

Reference Value = 15.18 V/m; Power Drift = -0.18 dB

Peak SAR (extrapolated) = 2.20 W/kg

SAR(1 g) = 0.954 W/kg; SAR(10 g) = 0.367 W/kg

Maximum value of SAR (measured) = 1.61 W/kg



0 dB = 1.23 W/kg = 0.90 dBW/kg

#17_WLAN2.4GHz_802.11b 1Mbps_Front_5mm_Ch6

Communication System: 802.11b; Frequency: 2437 MHz; Duty Cycle: 1:1.025

Medium: MSL2450_180502 Medium parameters used : $f = 2437$ MHz; $\sigma = 1.866$ S/m; $\epsilon_r = 52.748$; $\rho = 1000$ kg/m³

Ambient Temperature : 23.5 °C ; Liquid Temperature : 22.5 °C

DASY5 Configuration:

- Probe: ES3DV3 - SN3169; ConvF(4.28, 4.28, 4.28); Calibrated: 2017/5/11;
- Sensor-Surface: 3mm (Mechanical Surface Detection)
- Electronics: DAE4 Sn853; Calibrated: 2017/7/19
- Phantom: SAM_Left; Type: QD000P40CD; Serial: TP:1477
- Measurement SW: DASY52, Version 52.10 (0); SEMCAD X Version 14.6.10 (7417)

Area Scan (81x61x1): Interpolated grid: dx=1.200 mm, dy=1.200 mm

Maximum value of SAR (interpolated) = 0.636 W/kg

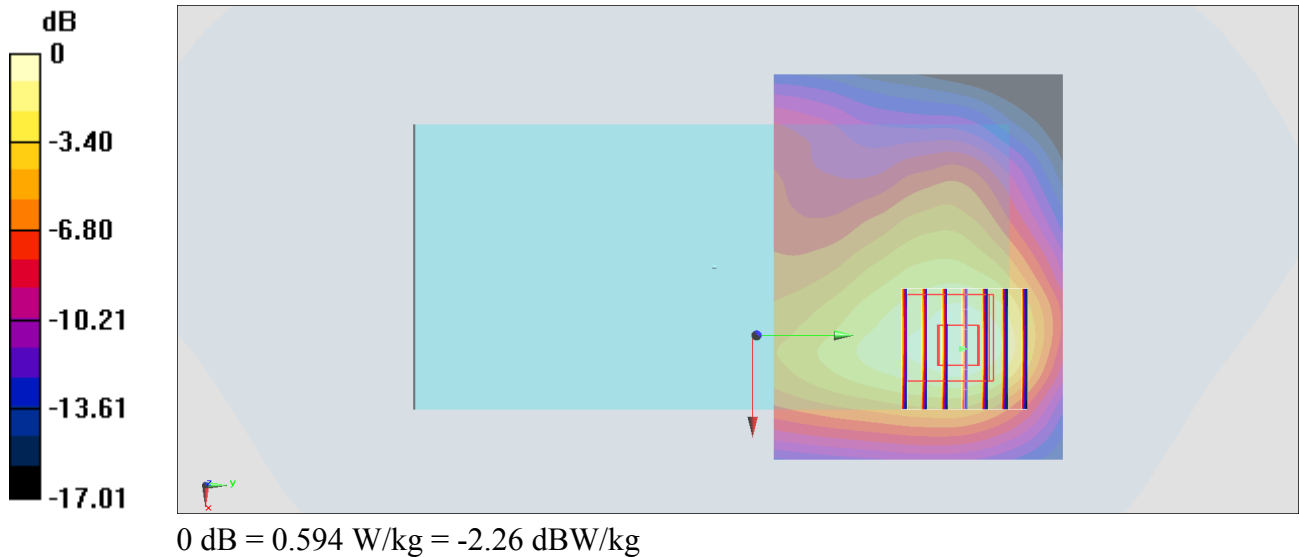
Zoom Scan (7x7x7)/Cube 0: Measurement grid: dx=5mm, dy=5mm, dz=5mm

Reference Value = 8.923 V/m; Power Drift = -0.11 dB

Peak SAR (extrapolated) = 0.829 W/kg

SAR(1 g) = 0.475 W/kg; SAR(10 g) = 0.258 W/kg

Maximum value of SAR (measured) = 0.594 W/kg



#18_Bluetooth_1Mbps_Front_5mm_Ch39

Communication System: Bluetooth; Frequency: 2441 MHz; Duty Cycle: 1:1.299

Medium: MSL_2450_180515 Medium parameters used: $f = 2441$ MHz; $\sigma = 1.972$ S/m; $\epsilon_r = 53.491$; $\rho = 1000$ kg/m³

Ambient Temperature : 23.6 °C ; Liquid Temperature : 22.6 °C

DASY5 Configuration:

- Probe: EX3DV4 - SN3925; ConvF(7.94, 7.94, 7.94); Calibrated: 2017/5/24;
- Sensor-Surface: 1.4mm (Mechanical Surface Detection)
- Electronics: DAE4 Sn1424; Calibrated: 2018/1/18
- Phantom: SAM_Right; Type: QD000P40CD; Serial: 1884
- Measurement SW: DASY52, Version 52.10 (1); SEMCAD X Version 14.6.11 (7437)

Area Scan (71x71x1): Interpolated grid: dx=1.200 mm, dy=1.200 mm

Maximum value of SAR (interpolated) = 0.144 W/kg

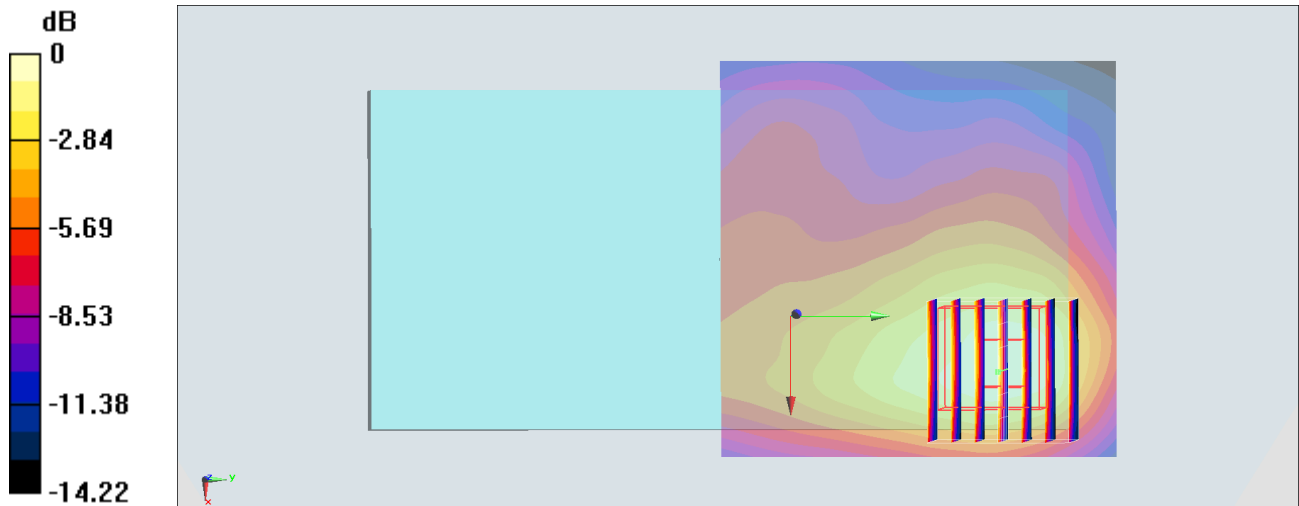
Zoom Scan (7x7x7)/Cube 0: Measurement grid: dx=5mm, dy=5mm, dz=5mm

Reference Value = 4.104 V/m; Power Drift = 0.18 dB

Peak SAR (extrapolated) = 0.175 W/kg

SAR(1 g) = 0.098 W/kg; SAR(10 g) = 0.055 W/kg

Maximum value of SAR (measured) = 0.141 W/kg



0 dB = 0.141 W/kg = -8.51 dBW/kg

#19_GSM850_GPRS (4 Tx slots)_Back_5mm_Ch251

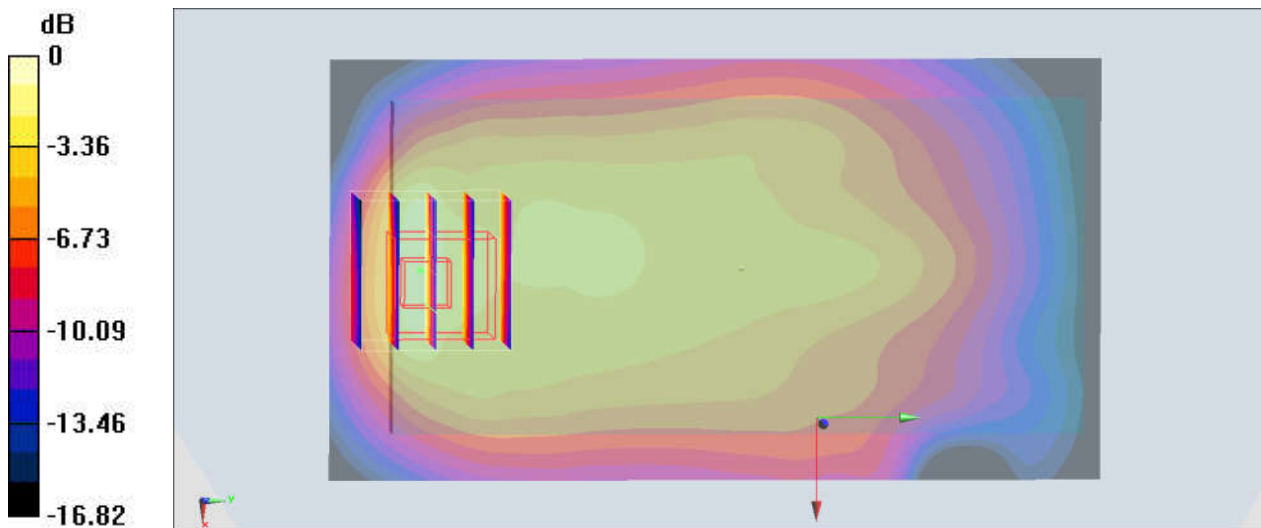
Communication System: GSM850 ; Frequency: 848.8 MHz;Duty Cycle: 1:2.08
Medium: MSL_850_180512 Medium parameters used: $f = 849$ MHz; $\sigma = 0.97$ S/m; $\epsilon_r = 55.047$; $\rho = 1000$ kg/m³
Ambient Temperature : 23.6 °C ; Liquid Temperature : 22.6 °C

DASY5 Configuration:

- Probe: ES3DV3 - SN3270; ConvF(6.09, 6.09, 6.09); Calibrated: 2017/9/25;
- Sensor-Surface: 3mm (Mechanical Surface Detection)
- Electronics: DAE4 Sn853; Calibrated: 2017/7/19
- Phantom: SAM_Left; Type: QD000P40CD; Serial: TP:1431
- Measurement SW: DASY52, Version 52.10 (0);SEMCAD X Version 14.6.10 (7417)

Area Scan (61x111x1): Interpolated grid: $dx=1.500$ mm, $dy=1.500$ mm
Maximum value of SAR (interpolated) = 0.835 W/kg

Zoom Scan (5x5x7)/Cube 0: Measurement grid: $dx=8$ mm, $dy=8$ mm, $dz=5$ mm
Reference Value = 22.64 V/m; Power Drift = 0.14 dB
Peak SAR (extrapolated) = 1.62 W/kg
SAR(1 g) = 0.808 W/kg; SAR(10 g) = 0.417 W/kg
Maximum value of SAR (measured) = 1.09 W/kg



0 dB = 1.09 W/kg = 0.37 dBW/kg

#20_GSM1900_GPRS (4 Tx slots)_Back_5mm_Ch810

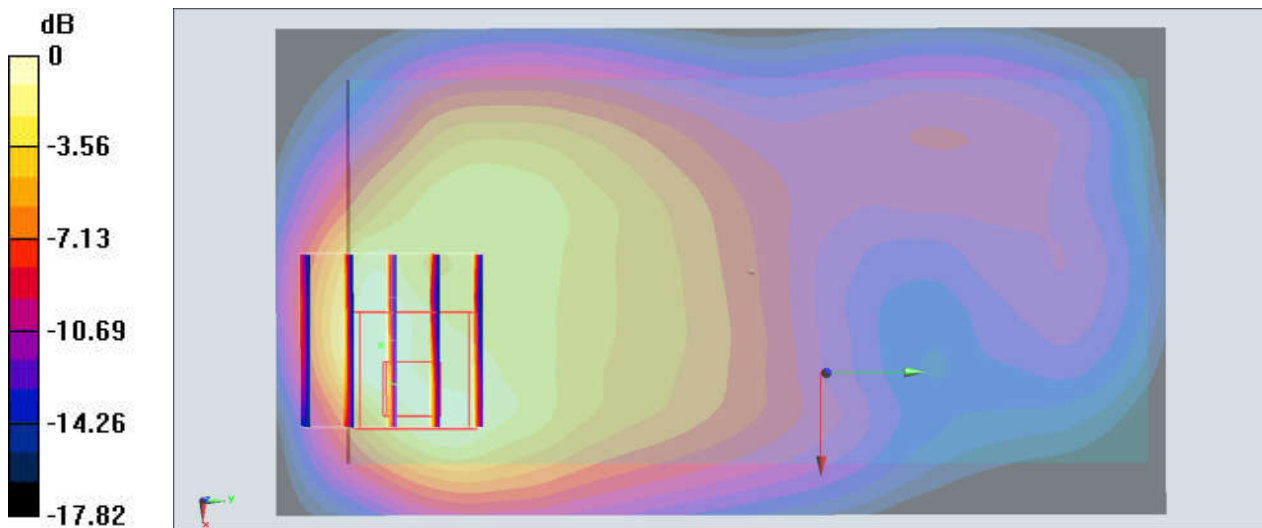
Communication System: PCS; Frequency: 1909.8 MHz; Duty Cycle: 1:2.08
Medium: MSL_1900_180514 Medium parameters used: $f = 1910$ MHz; $\sigma = 1.589$ S/m; $\epsilon_r = 53.566$;
 $\rho = 1000$ kg/m³
Ambient Temperature : 23.5 °C ; Liquid Temperature : 22.5 °C

DASY5 Configuration:

- Probe: ES3DV3 - SN3270; ConvF(4.9, 4.9, 4.9); Calibrated: 2017/9/25;
- Sensor-Surface: 3mm (Mechanical Surface Detection)
- Electronics: DAE4 Sn853; Calibrated: 2017/7/19
- Phantom: SAM-Right; Type: SAM; Serial: TP-1503
- Measurement SW: DASY52, Version 52.10 (0); SEMCAD X Version 14.6.10 (7417)

Area Scan (61x111x1): Interpolated grid: dx=1.500 mm, dy=1.500 mm
Maximum value of SAR (interpolated) = 1.31 W/kg

Zoom Scan (5x5x7)/Cube 0: Measurement grid: dx=8mm, dy=8mm, dz=5mm
Reference Value = 22.10 V/m; Power Drift = -0.10 dB
Peak SAR (extrapolated) = 1.74 W/kg
SAR(1 g) = 0.845 W/kg; SAR(10 g) = 0.420 W/kg
Maximum value of SAR (measured) = 1.06 W/kg



0 dB = 1.06 W/kg = 0.25 dBW/kg

#21_WCDMA II_RMC 12.2Kbps_Back_5mm_Ch9400

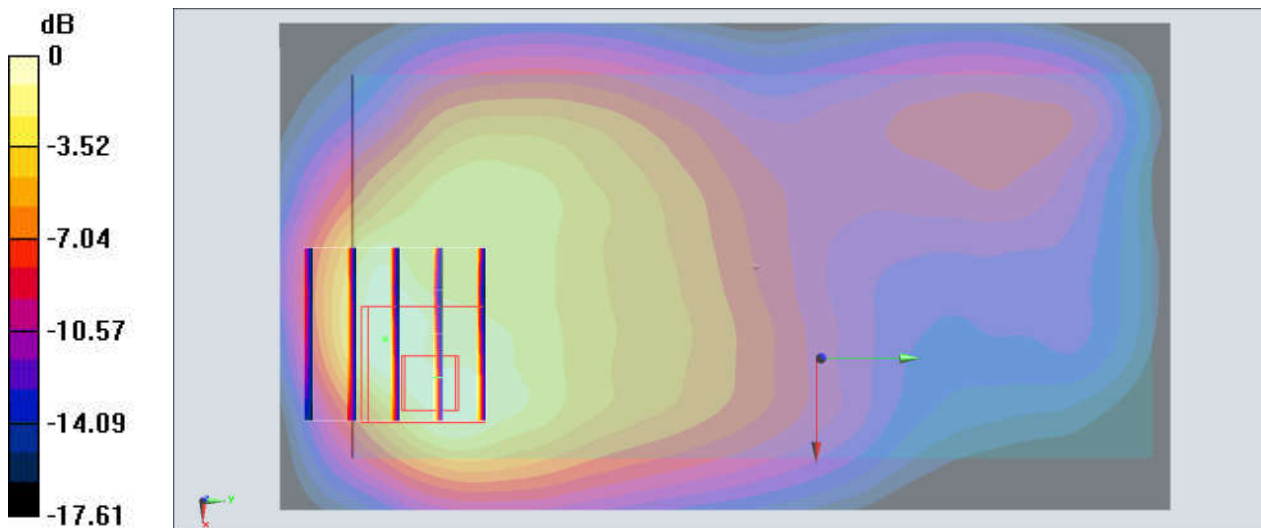
Communication System: WCDMA; Frequency: 1880 MHz; Duty Cycle: 1:1
Medium: MSL_1900_180514 Medium parameters used: $f = 1880$ MHz; $\sigma = 1.555$ S/m; $\epsilon_r = 53.65$; $\rho = 1000$ kg/m³
Ambient Temperature : 23.5 °C ; Liquid Temperature : 22.5 °C

DASY5 Configuration:

- Probe: ES3DV3 - SN3270; ConvF(4.9, 4.9, 4.9); Calibrated: 2017/9/25;
- Sensor-Surface: 3mm (Mechanical Surface Detection)
- Electronics: DAE4 Sn853; Calibrated: 2017/7/19
- Phantom: SAM-Right; Type: SAM; Serial: TP-1503
- Measurement SW: DASY52, Version 52.10 (0); SEMCAD X Version 14.6.10 (7417)

Area Scan (61x111x1): Interpolated grid: dx=1.500 mm, dy=1.500 mm
Maximum value of SAR (interpolated) = 1.45 W/kg

Zoom Scan (5x5x7)/Cube 0: Measurement grid: dx=8mm, dy=8mm, dz=5mm
Reference Value = 26.39 V/m; Power Drift = -0.05 dB
Peak SAR (extrapolated) = 2.02 W/kg
SAR(1 g) = 1.02 W/kg; SAR(10 g) = 0.507 W/kg
Maximum value of SAR (measured) = 1.31 W/kg



0 dB = 1.31 W/kg = 1.17 dBW/kg

#22_WCDMA V_RMC 12.2Kbps_Back_5mm_Ch4233

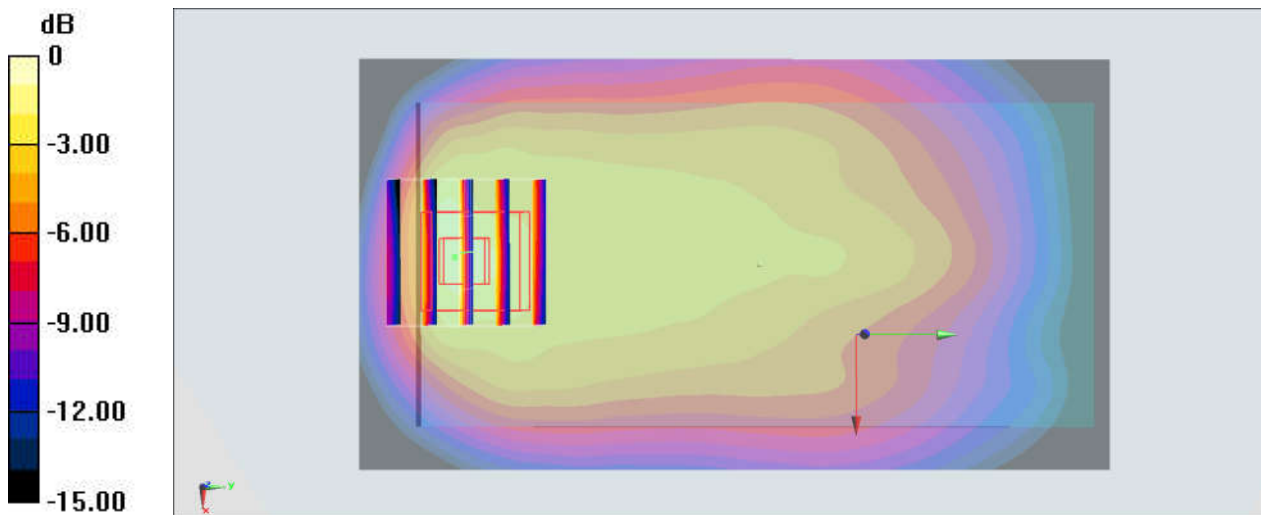
Communication System: WCDMA; Frequency: 846.6 MHz; Duty Cycle: 1:1
Medium: MSL_850_180508 Medium parameters used: $f = 847$ MHz; $\sigma = 0.972$ S/m; $\epsilon_r = 55.122$; $\rho = 1000$ kg/m³
Ambient Temperature : 23.7 °C; Liquid Temperature : 22.7 °C

DASY5 Configuration:

- Probe: ES3DV3 - SN3169; ConvF(6.05, 6.05, 6.05); Calibrated: 2017/5/11;
- Sensor-Surface: 3mm (Mechanical Surface Detection)
- Electronics: DAE4 Sn853; Calibrated: 2017/7/19
- Phantom: SAM-Right; Type: SAM; Serial: TP-1503
- Measurement SW: DASY52, Version 52.10 (0); SEMCAD X Version 14.6.10 (7417)

Area Scan (61x111x1): Interpolated grid: dx=1.500 mm, dy=1.500 mm
Maximum value of SAR (interpolated) = 0.913 W/kg

Zoom Scan (5x5x7)/Cube 0: Measurement grid: dx=8mm, dy=8mm, dz=5mm
Reference Value = 27.08 V/m; Power Drift = 0.01 dB
Peak SAR (extrapolated) = 1.89 W/kg
SAR(1 g) = 0.950 W/kg; SAR(10 g) = 0.490 W/kg
Maximum value of SAR (measured) = 1.29 W/kg



#23_LTE Band 5_10M_QPSK_1_25_Back_5mm_Ch20525

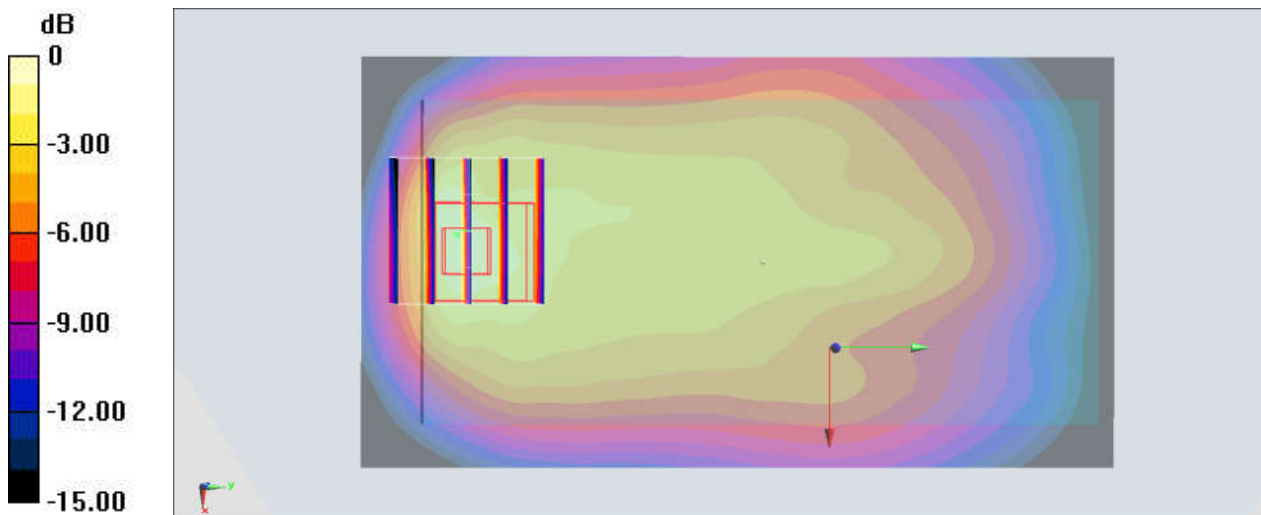
Communication System: LTE ; Frequency: 836.5 MHz;Duty Cycle: 1:1
Medium: MSL_850_180508 Medium parameters used : $f = 836.5$ MHz; $\sigma = 0.962$ S/m; $\epsilon_r = 55.222$;
 $\rho = 1000$ kg/m³
Ambient Temperature : 23.7 °C ; Liquid Temperature : 22.7 °C

DASY5 Configuration:

- Probe: ES3DV3 - SN3169; ConvF(6.05, 6.05, 6.05); Calibrated: 2017/5/11;
- Sensor-Surface: 3mm (Mechanical Surface Detection)
- Electronics: DAE4 Sn853; Calibrated: 2017/7/19
- Phantom: SAM-Right; Type: SAM; Serial: TP-1503
- Measurement SW: DASY52, Version 52.10 (0);SEMCAD X Version 14.6.10 (7417)

Area Scan (61x111x1): Interpolated grid: dx=1.500 mm, dy=1.500 mm
Maximum value of SAR (interpolated) = 0.862 W/kg

Zoom Scan (5x5x7)/Cube 0: Measurement grid: dx=8mm, dy=8mm, dz=5mm
Reference Value = 26.39 V/m; Power Drift = -0.09 dB
Peak SAR (extrapolated) = 1.75 W/kg
SAR(1 g) = 0.881 W/kg; SAR(10 g) = 0.460 W/kg
Maximum value of SAR (measured) = 1.16 W/kg



0 dB = 1.16 W/kg = 0.64 dBW/kg

#24_LTE Band 7_20M_QPSK_1_49_Back_5mm_Ch20850

Communication System: LTE ; Frequency: 2510 MHz;Duty Cycle: 1:1

Medium: MSL_2600_180513 Medium parameters used: $f = 2510$ MHz; $\sigma = 2.042$ S/m; $\epsilon_r = 51.827$; $\rho = 1000$ kg/m³

Ambient Temperature : 23.7 °C ; Liquid Temperature : 22.7 °C

DASY5 Configuration:

- Probe: EX3DV4 - SN3931; ConvF(7.45, 7.45, 7.45); Calibrated: 2017/9/29;
- Sensor-Surface: 1.4mm (Mechanical Surface Detection)
- Electronics: DAE4 Sn1399; Calibrated: 2017/11/16
- Phantom: SAM LEFT; Type: QD000P40CD; Serial: TP:1718
- Measurement SW: DASY52, Version 52.10 (0);SEMCAD X Version 14.6.10 (7417)

Area Scan (81x141x1): Interpolated grid: $dx=1.200$ mm, $dy=1.200$ mm

Maximum value of SAR (interpolated) = 1.60 W/kg

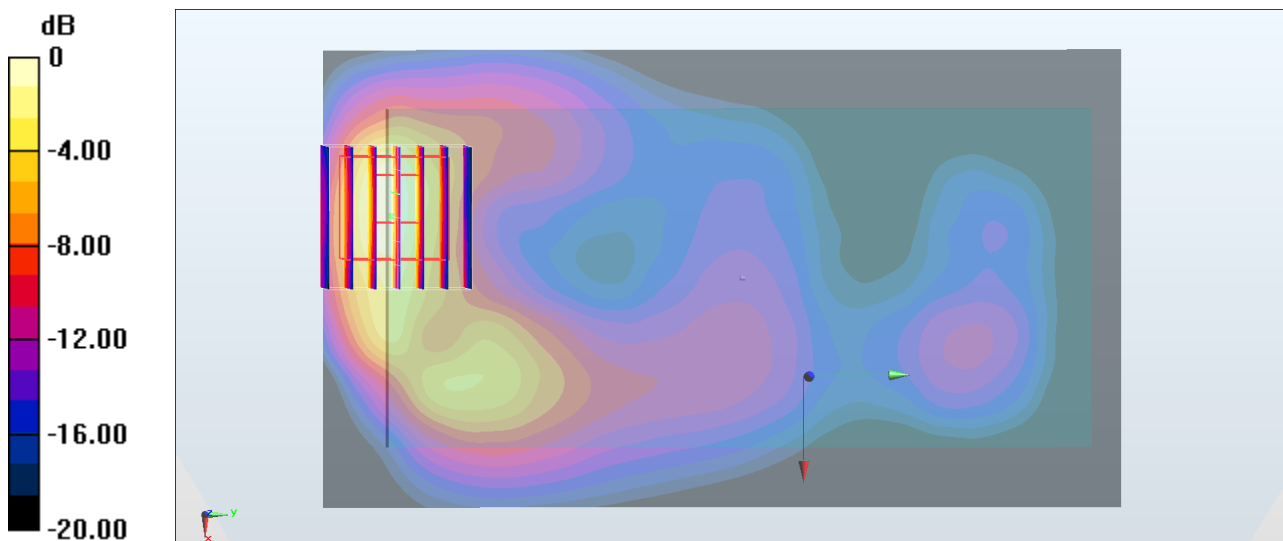
Zoom Scan (7x7x7)/Cube 0: Measurement grid: $dx=5$ mm, $dy=5$ mm, $dz=5$ mm

Reference Value = 14.43 V/m; Power Drift = -0.19 dB

Peak SAR (extrapolated) = 2.61 W/kg

SAR(1 g) = 1.15 W/kg; SAR(10 g) = 0.447 W/kg

Maximum value of SAR (measured) = 1.95 W/kg



0 dB = 1.60 W/kg = 2.04 dBW/kg

#25_LTE Band 41_20M_QPSK_1_49_Back_5mm_Ch40140

Communication System: LTE TDD ; Frequency: 2545 MHz;Duty Cycle: 1:1.59

Medium: MSL_2600_180513 Medium parameters used: $f = 2546$ MHz; $\sigma = 2.09$ S/m; $\epsilon_r = 51.687$; $\rho = 1000$ kg/m³

Ambient Temperature : 23.7 °C ; Liquid Temperature : 22.7 °C

DASY5 Configuration:

- Probe: EX3DV4 - SN3931; ConvF(7.45, 7.45, 7.45); Calibrated: 2017/9/29;
- Sensor-Surface: 1.4mm (Mechanical Surface Detection)
- Electronics: DAE4 Sn1399; Calibrated: 2017/11/16
- Phantom: SAM LEFT; Type: QD000P40CD; Serial: TP:1718
- Measurement SW: DASY52, Version 52.10 (0);SEMCAD X Version 14.6.10 (7417)

Area Scan (81x81x1): Interpolated grid: dx=1.200 mm, dy=1.200 mm

Maximum value of SAR (interpolated) = 1.23 W/kg

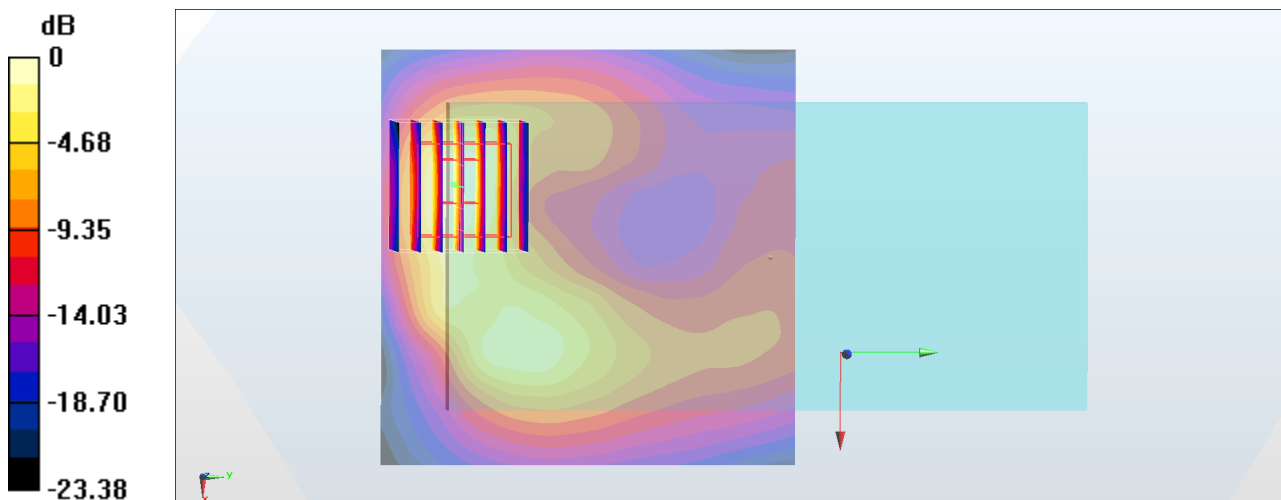
Zoom Scan (7x7x7)/Cube 0: Measurement grid: dx=5mm, dy=5mm, dz=5mm

Reference Value = 15.18 V/m; Power Drift = -0.18 dB

Peak SAR (extrapolated) = 2.20 W/kg

SAR(1 g) = 0.954 W/kg; SAR(10 g) = 0.367 W/kg

Maximum value of SAR (measured) = 1.61 W/kg



0 dB = 1.23 W/kg = 0.90 dBW/kg

#26_WLAN2.4GHz_802.11b 1Mbps_Front_5mm_Ch6

Communication System: 802.11b; Frequency: 2437 MHz; Duty Cycle: 1:1.025

Medium: MSL2450_180502 Medium parameters used : $f = 2437$ MHz; $\sigma = 1.866$ S/m; $\epsilon_r = 52.748$; $\rho = 1000$ kg/m³

Ambient Temperature : 23.5 °C ; Liquid Temperature : 22.5 °C

DASY5 Configuration:

- Probe: ES3DV3 - SN3169; ConvF(4.28, 4.28, 4.28); Calibrated: 2017/5/11;
- Sensor-Surface: 3mm (Mechanical Surface Detection)
- Electronics: DAE4 Sn853; Calibrated: 2017/7/19
- Phantom: SAM_Left; Type: QD000P40CD; Serial: TP:1477
- Measurement SW: DASY52, Version 52.10 (0); SEMCAD X Version 14.6.10 (7417)

Area Scan (81x61x1): Interpolated grid: dx=1.200 mm, dy=1.200 mm

Maximum value of SAR (interpolated) = 0.636 W/kg

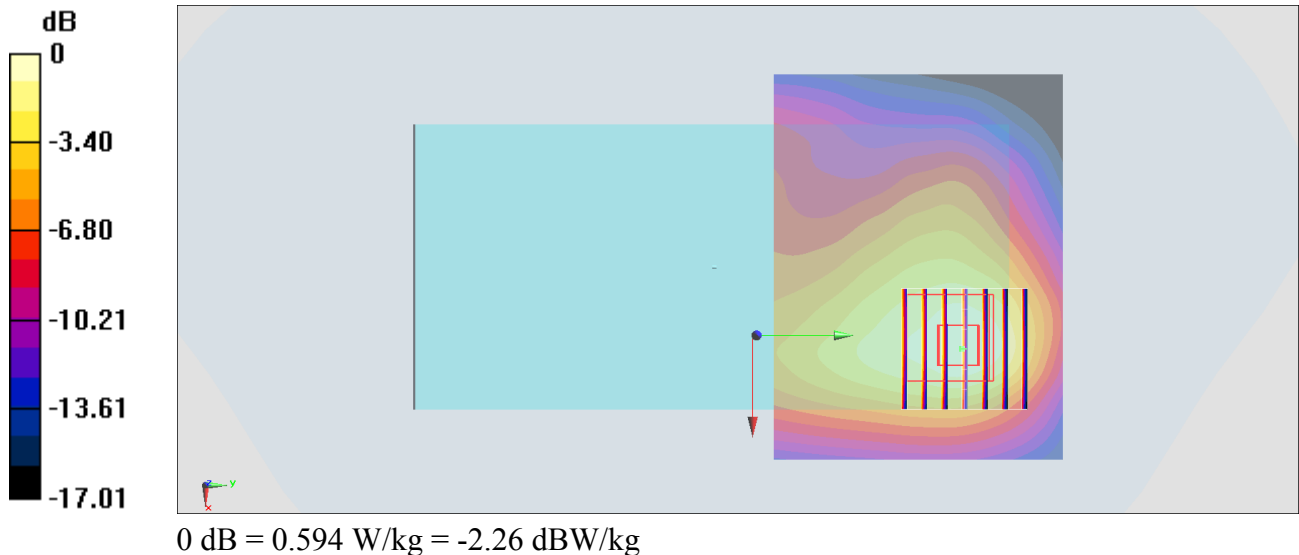
Zoom Scan (7x7x7)/Cube 0: Measurement grid: dx=5mm, dy=5mm, dz=5mm

Reference Value = 8.923 V/m; Power Drift = -0.11 dB

Peak SAR (extrapolated) = 0.829 W/kg

SAR(1 g) = 0.475 W/kg; SAR(10 g) = 0.258 W/kg

Maximum value of SAR (measured) = 0.594 W/kg



#27_Bluetooth_1Mbps_Front_5mm_Ch39

Communication System: Bluetooth; Frequency: 2441 MHz; Duty Cycle: 1:1.299

Medium: MSL_2450_180515 Medium parameters used: $f = 2441$ MHz; $\sigma = 1.972$ S/m; $\epsilon_r = 53.491$; $\rho = 1000$ kg/m³

Ambient Temperature : 23.6 °C ; Liquid Temperature : 22.6 °C

DASY5 Configuration:

- Probe: EX3DV4 - SN3925; ConvF(7.94, 7.94, 7.94); Calibrated: 2017/5/24;
- Sensor-Surface: 1.4mm (Mechanical Surface Detection)
- Electronics: DAE4 Sn1424; Calibrated: 2018/1/18
- Phantom: SAM_Right; Type: QD000P40CD; Serial: 1884
- Measurement SW: DASY52, Version 52.10 (1); SEMCAD X Version 14.6.11 (7437)

Area Scan (71x71x1): Interpolated grid: dx=1.200 mm, dy=1.200 mm

Maximum value of SAR (interpolated) = 0.144 W/kg

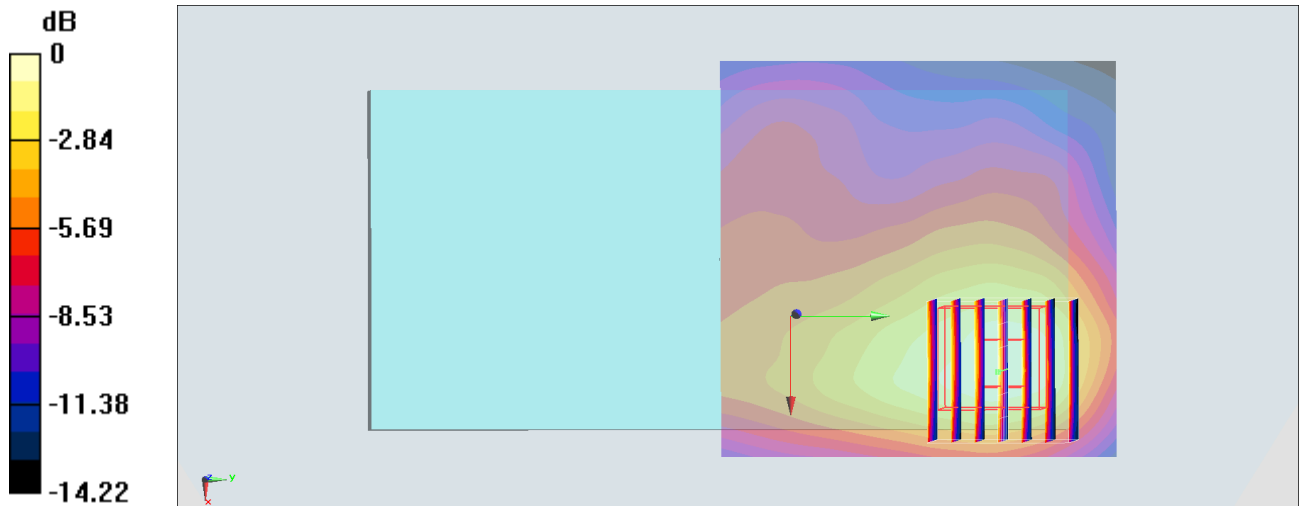
Zoom Scan (7x7x7)/Cube 0: Measurement grid: dx=5mm, dy=5mm, dz=5mm

Reference Value = 4.104 V/m; Power Drift = 0.18 dB

Peak SAR (extrapolated) = 0.175 W/kg

SAR(1 g) = 0.098 W/kg; SAR(10 g) = 0.055 W/kg

Maximum value of SAR (measured) = 0.141 W/kg



0 dB = 0.141 W/kg = -8.51 dBW/kg