

1. External Photograph of EUT

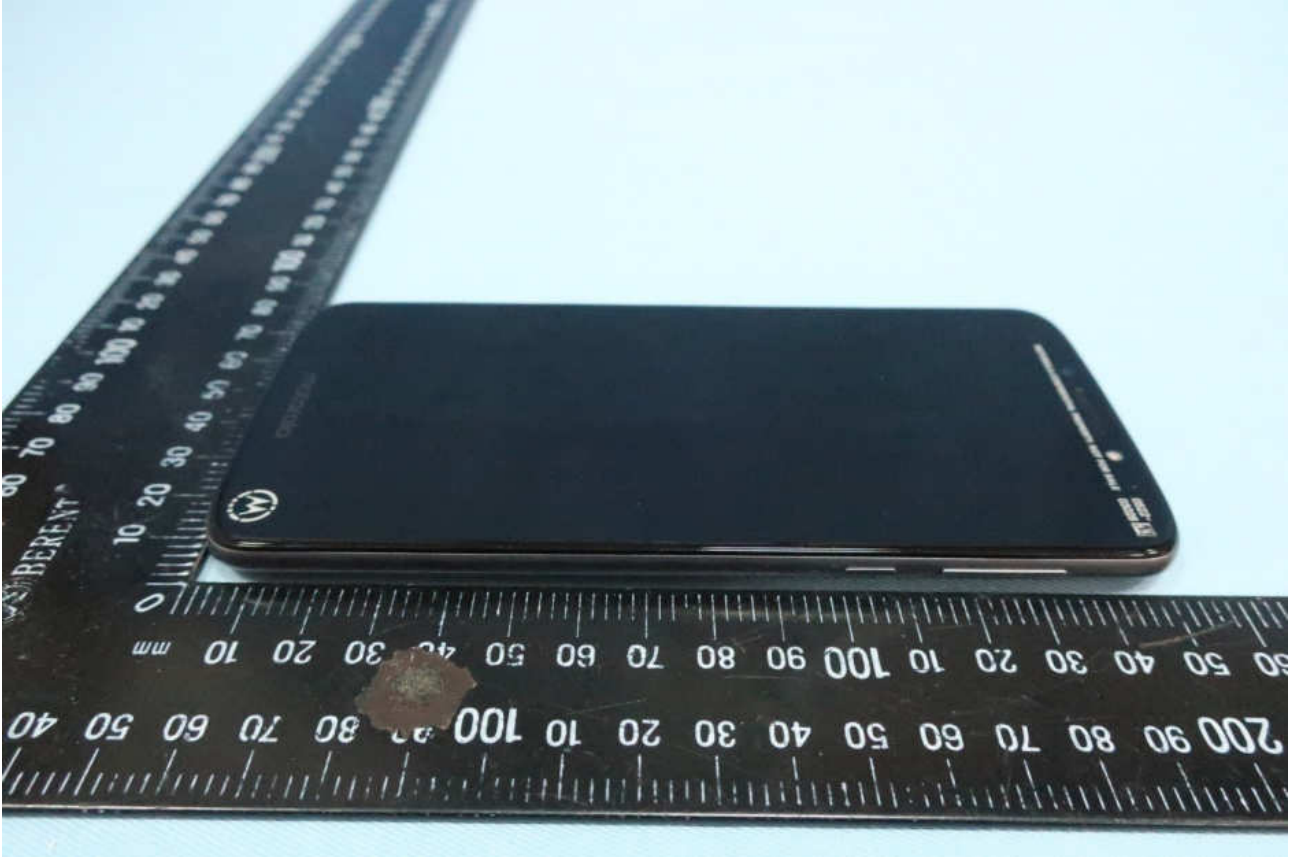
Brand Name: Motorola / Model Name: XT1944-6



Brand Name: Motorola / Model Name: XT1944-6



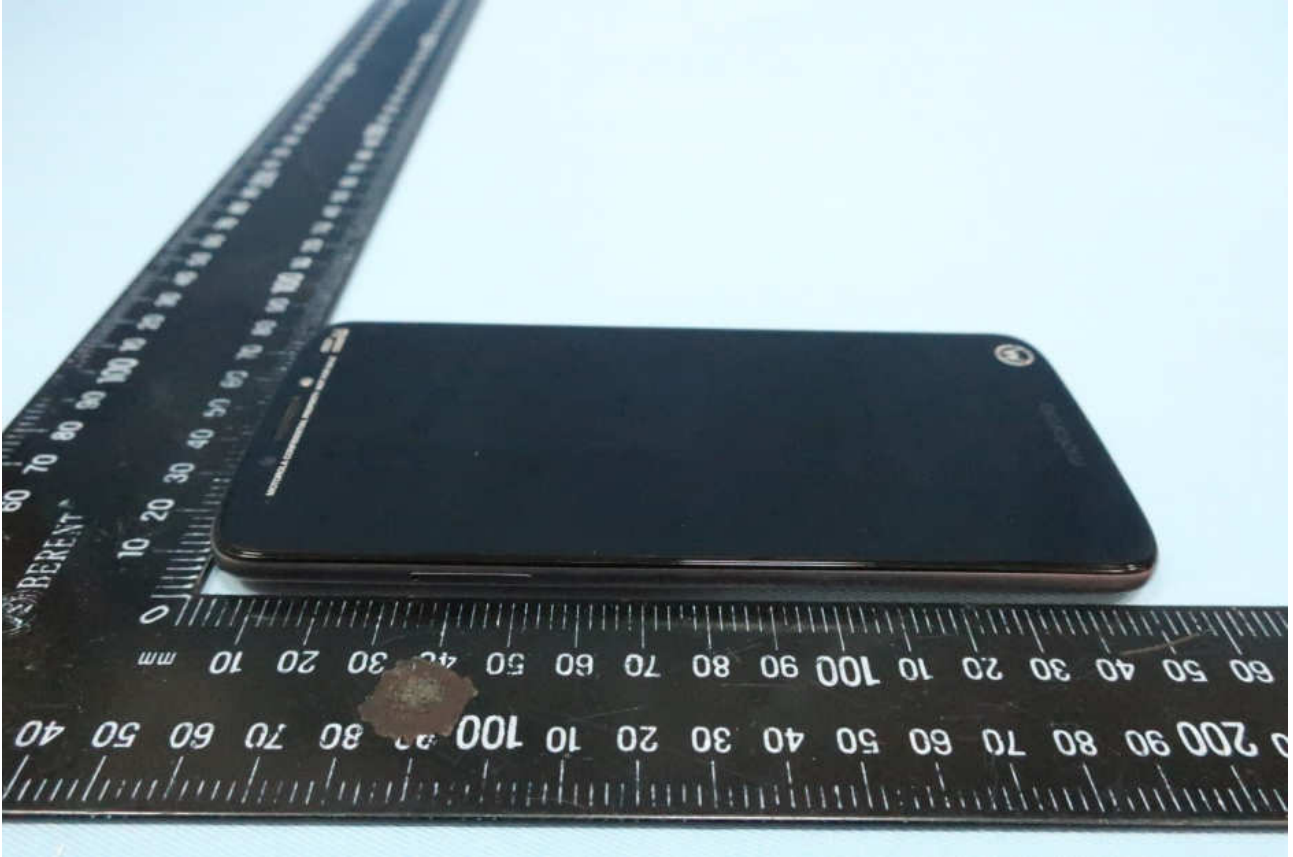
Brand Name: Motorola / Model Name: XT1944-6



Brand Name: Motorola / Model Name: XT1944-6



Brand Name: Motorola / Model Name: XT1944-6



**Brand Name: Motorola / Model Name: XT1944-6**





2. Photograph of Accessory

Brand Name: Motorola / Model Name: XT1944-6

List of Accessory:

Specification of Accessory				
AC Adapter 1(US)	Brand Name	Motorola (Acbel)	Model Name	SPN5945A C-P35
	Power Rating	I/P: 100-240 Vac, 300mA, O/P: 5.2Vdc,2000mA		
AC Adapter 1(EU)	Brand Name	Motorola (Acbel)	Model Name	SPN5944A C-P36
	Power Rating	I/P: 100-240 Vac, 300mA, O/P: 5.2Vdc,2000mA		
AC Adapter 1(UK)	Brand Name	Motorola (Acbel)	Model Name	SPN5940A C-P37
	Power Rating	I/P: 100-240 Vac, 300mA, O/P: 5.2Vdc,2000mA		
AC Adapter 1(IN)	Brand Name	Motorola (Acbel)	Model Name	SA18C19493 C-P49 SPN5946A
	Power Rating	I/P: 100-240 Vac, 300mA, O/P: 5.2Vdc,2000mA		
AC Adapter 1(AU)	Brand Name	Motorola (Acbel)	Model Name	SPN5953A C-P48
	Power Rating	I/P: 100-240 Vac, 300mA, O/P: 5.2Vdc,2000mA		
AC Adapter 1(AR)	Brand Name	Motorola (Acbel)	Model Name	SPN5942A C-P47
	Power Rating	I/P: 100-240 Vac, 500mA, O/P: 5.2Vdc,2000mA		
AC Adapter 2(US)	Brand Name	Motorola (Salom)	Model Name	SSW-2919UMTJ C-P35 SPN5945A
	Power Rating	I/P: 100-240 Vac, 300mA, O/P: 5.2Vdc,2000mA		
AC Adapter 2(EU)	Brand Name	Motorola (Salom)	Model Name	SSW-2919EU C-P36 SPN5944A
	Power Rating	I/P: 100-240 Vac, 300mA, O/P: 5.2Vdc,2000mA		
AC Adapter 2(UK)	Brand Name	Motorola (Salom)	Model Name	SSW-2919UK C-P37 SPN5940A
	Power Rating	I/P: 100-240 Vac, 300mA, O/P: 5.2Vdc,2000mA		
AC Adapter 2(AU)	Brand Name	Motorola (Salom)	Model Name	SSW-2919AU C-P48 SPN5953A
	Power Rating	I/P: 100-240 Vac, 300mA, O/P: 5.2Vdc,2000mA		
AC Adapter 2(AR)	Brand Name	Motorola (Salom)	Model Name	SSW-2919AR C-P47 SPN5955A
	Power Rating	I/P: 100-240 Vac, 500mA, O/P: 5.2Vdc,2000mA		



Brand Name: Motorola / Model Name: XT1944-6

<b>Battery</b>	<b>Brand Name</b>	Lenovo (SCUD)	<b>Model Name</b>	BL270
	<b>Power Rating</b>	3.85/4.4Vdc,4000mAh	Type	Li-ion, ATL426580
<b>Earphone</b>	<b>Brand Name</b>	Motorola(NEW Leaders)	<b>Model Name</b>	NLD-EM300V-01SF
	<b>Signal Line Type</b>	1.2 meter, non-shielded cable, without ferrite core		
<b>USB Cable</b>	<b>Brand Name</b>	Motorola (Saibao)	<b>Model Name</b>	SLQ-A081A
	<b>Signal Line Type</b>	1.0 meter, shielded cable, without ferrite core		

**Remark:**

1. For accessories equipped with this EUT, please refer to the following photos.
2. For adapter, there are different kinds of plugs that designed for different countries, the others are the same including circuit design, PCB board, structure and all components. So we evaluate it is not affect any test item, for FCC test, we only evaluate adapter 1 and 2 with the US plug to test.



Brand Name: Motorola / Model Name: XT1944-6



Brand Name: Motorola / Model Name: XT1944-6

AC Adapter 1 (US)



Brand Name: Motorola / Model Name: XT1944-6

AC Adapter 1 (EU)



Brand Name: Motorola / Model Name: XT1944-6

AC Adapter 1 (UK)



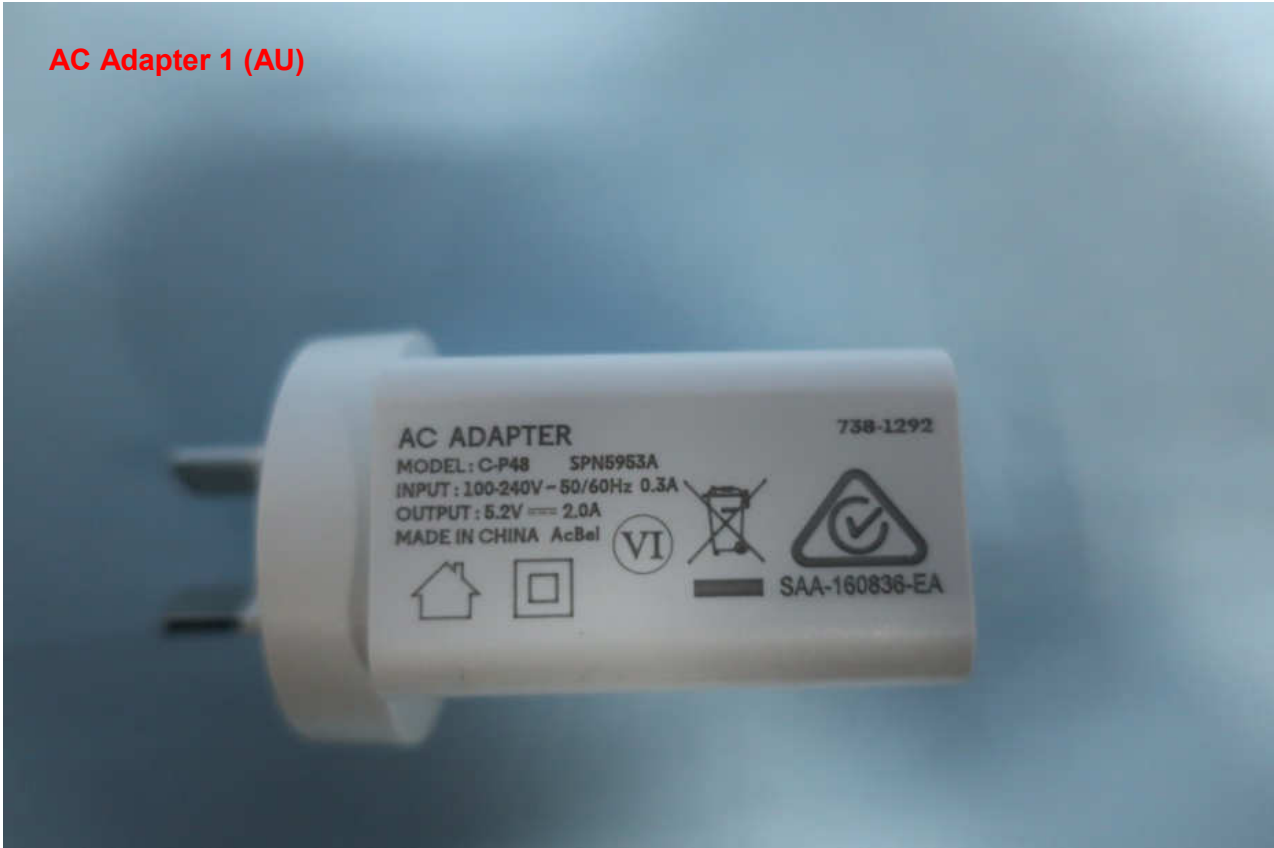
Brand Name: Motorola / Model Name: XT1944-6

AC Adapter 1 (IN)



Brand Name: Motorola / Model Name: XT1944-6

AC Adapter 1 (AU)



Brand Name: Motorola / Model Name: XT1944-6

AC Adapter 1 (AR)



Brand Name: Motorola / Model Name: XT1944-6

AC Adapter 2 (US)





Brand Name: Motorola / Model Name: XT1944-6

AC Adapter 2 (EU)



Brand Name: Motorola / Model Name: XT1944-6

AC Adapter 2 (UK)



Brand Name: Motorola / Model Name: XT1944-6

AC Adapter 2 (AU)



Brand Name: Motorola / Model Name: XT1944-6

AC Adapter 2 (AR)



Brand Name: Motorola / Model Name: XT1944-6



Brand Name: Motorola / Model Name: XT1944-6

