

41_GSM850_GPRS 2 Tx slots_Front_5mm_Ch251

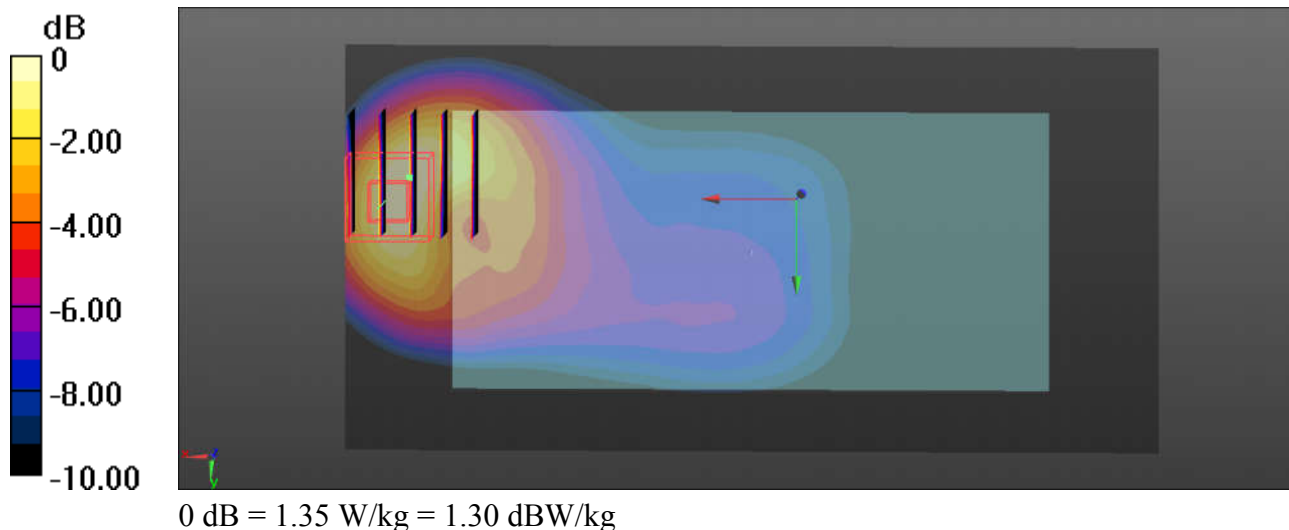
Communication System: UID 0, GPRS/EDGE (2 Tx slots) (0); Frequency: 848.8 MHz; Duty Cycle: 1:4.15
Medium: MSL_850 Medium parameters used: $f = 848.8 \text{ MHz}$; $\sigma = 1.012 \text{ S/m}$; $\epsilon_r = 54.094$; $\rho = 1000 \text{ kg/m}^3$
Ambient Temperature : $23.5 \text{ }^\circ\text{C}$; Liquid Temperature : $22.6 \text{ }^\circ\text{C}$

DASY5 Configuration:

- Probe: EX3DV4 - SN3857; ConvF(9.72, 9.72, 9.72); Calibrated: 2017.5.26;
- Sensor-Surface: 2mm (Mechanical Surface Detection)
- Electronics: DAE4 Sn1210; Calibrated: 2017.5.25
- Phantom: SAM2; Type: SAM; Serial: TP-1644
- Measurement SW: DASY52, Version 52.8 (8); SEMCAD X Version 14.6.10 (7331)

Ch251/Area Scan (141x71x1): Interpolated grid: $dx=1.500 \text{ mm}$, $dy=1.500 \text{ mm}$
Maximum value of SAR (interpolated) = 1.42 W/kg

Ch251/Zoom Scan (5x5x7)/Cube 0: Measurement grid: $dx=8\text{mm}$, $dy=8\text{mm}$, $dz=5\text{mm}$
Reference Value = 16.18 V/m ; Power Drift = -0.05 dB
Peak SAR (extrapolated) = 1.83 W/kg
SAR(1 g) = 0.983 W/kg ; SAR(10 g) = 0.529 W/kg
Maximum value of SAR (measured) = 1.35 W/kg



42_GSM1900_GPRS 2 Tx slots_Front_5mm_Ch661

Communication System: UID 0, GPRS/EDGE (2 Tx slots) (0); Frequency: 1880 MHz; Duty Cycle: 1:4.15
 Medium: MSL_1900 Medium parameters used: $f = 1880 \text{ MHz}$; $\sigma = 1.497 \text{ S/m}$; $\epsilon_r = 54.905$;

$\rho = 1000 \text{ kg/m}^3$

Ambient Temperature : $23.3 \text{ }^\circ\text{C}$; Liquid Temperature : $22.8 \text{ }^\circ\text{C}$

DASY5 Configuration:

- Probe: EX3DV4 - SN3857; ConvF(8.08, 8.08, 8.08); Calibrated: 2017.5.26;
- Sensor-Surface: 2mm (Mechanical Surface Detection)
- Electronics: DAE4 Sn1210; Calibrated: 2017.5.25
- Phantom: SAM1; Type: SAM; Serial: TP-1164
- Measurement SW: DASY52, Version 52.8 (8); SEMCAD X Version 14.6.10 (7331)

Ch661/Area Scan (71x121x1): Interpolated grid: $dx=1.500 \text{ mm}$, $dy=1.500 \text{ mm}$

Maximum value of SAR (interpolated) = 0.998 W/kg

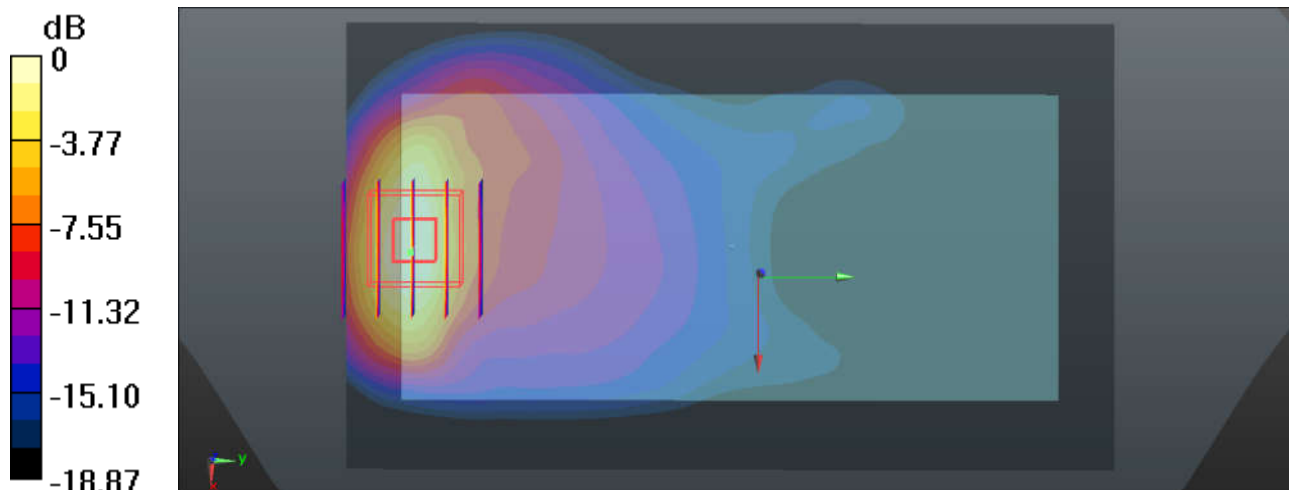
Ch661/Zoom Scan (5x5x7)/Cube 0: Measurement grid: $dx=8\text{mm}$, $dy=8\text{mm}$, $dz=5\text{mm}$

Reference Value = 4.619 V/m ; Power Drift = 0.02 dB

Peak SAR (extrapolated) = 1.17 W/kg

SAR(1 g) = 0.698 W/kg ; SAR(10 g) = 0.361 W/kg

Maximum value of SAR (measured) = 0.965 W/kg



0 dB = 0.965 W/kg = -0.15 dBW/kg

43_WCDMA Band V_RMC 12.2Kbps_Front_5mm_Ch4233

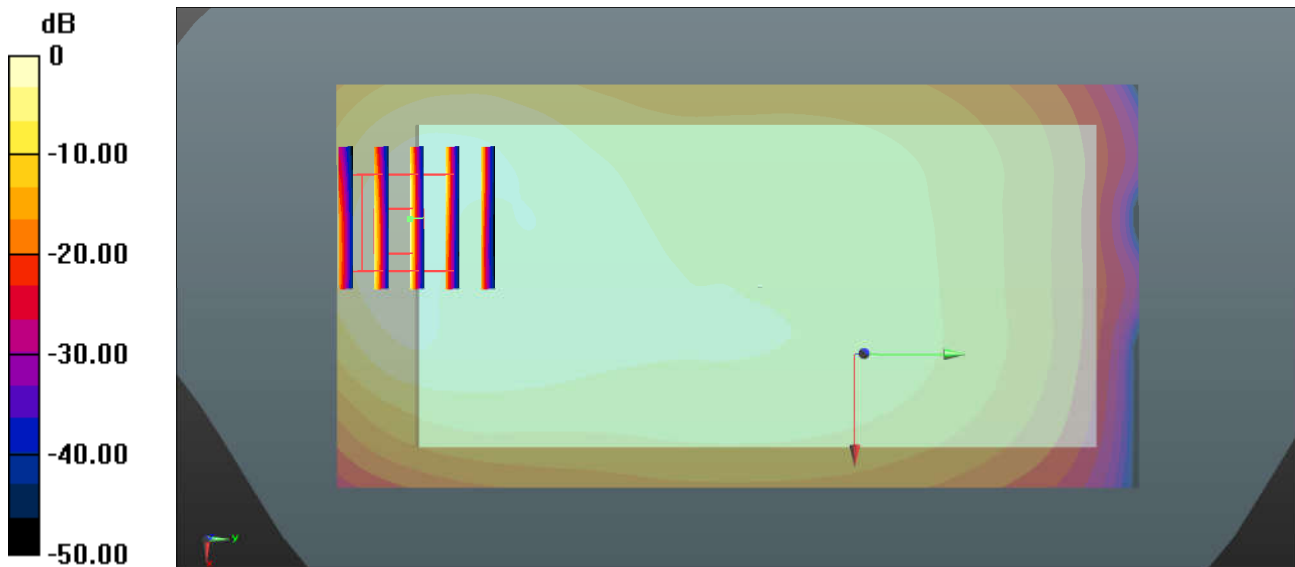
Communication System: UID 0, UMTS (0); Frequency: 846.6 MHz; Duty Cycle: 1:1
 Medium: MSL_850 Medium parameters used: $f = 846.6 \text{ MHz}$; $\sigma = 1.007 \text{ S/m}$; $\epsilon_r = 54.512$;
 $\rho = 1000 \text{ kg/m}^3$
 Ambient Temperature : $23.5 \text{ }^\circ\text{C}$; Liquid Temperature : $22.6 \text{ }^\circ\text{C}$

DASY5 Configuration:

- Probe: EX3DV4 - SN3857; ConvF(9.72, 9.72, 9.72); Calibrated: 2017.5.26;
- Sensor-Surface: 2mm (Mechanical Surface Detection)
- Electronics: DAE4 Sn1326; Calibrated: 2017.9.15
- Phantom: SAM2; Type: SAM; Serial: TP-1644
- Measurement SW: DASY52, Version 52.8 (8); SEMCAD X Version 14.6.10 (7331)

Ch4233/Area Scan (61x121x1): Interpolated grid: $dx=1.500 \text{ mm}$, $dy=1.500 \text{ mm}$
 Maximum value of SAR (interpolated) = 0.855 W/kg

Ch4233/Zoom Scan (5x5x7)/Cube 0: Measurement grid: $dx=8\text{mm}$, $dy=8\text{mm}$, $dz=5\text{mm}$
 Reference Value = 15.44 V/m ; Power Drift = -0.11 dB
 Peak SAR (extrapolated) = 1.27 W/kg
SAR(1 g) = 0.655 W/kg ; SAR(10 g) = 0.342 W/kg
 Maximum value of SAR (measured) = 0.845 W/kg



0 dB = $0.855 \text{ W/kg} = -0.68 \text{ dBW/kg}$

44_WCDMA Band IV_RMC 12.2Kbps_Front_5mm_Ch1312

Communication System: UID 0, UMTS (0); Frequency: 1712.4 MHz; Duty Cycle: 1:1
Medium: MSL_1750 Medium parameters used: $f = 1712.4$ MHz; $\sigma = 1.423$ S/m; $\epsilon_r = 53.752$;

$\rho = 1000$ kg/m³

Ambient Temperature : 23.5 °C ; Liquid Temperature : 22.6 °C

DASY5 Configuration:

- Probe: EX3DV4 - SN3857; ConvF(8.29, 8.29, 8.29); Calibrated: 2017.5.26;
- Sensor-Surface: 2mm (Mechanical Surface Detection)
- Electronics: DAE4 Sn1210; Calibrated: 2017.5.25
- Phantom: SAM1; Type: SAM; Serial: TP-1164
- Measurement SW: DASY52, Version 52.8 (8); SEMCAD X Version 14.6.10 (7331)

Ch1312/Area Scan (121x71x1): Interpolated grid: dx=1.500 mm, dy=1.500 mm

Maximum value of SAR (interpolated) = 0.941 W/kg

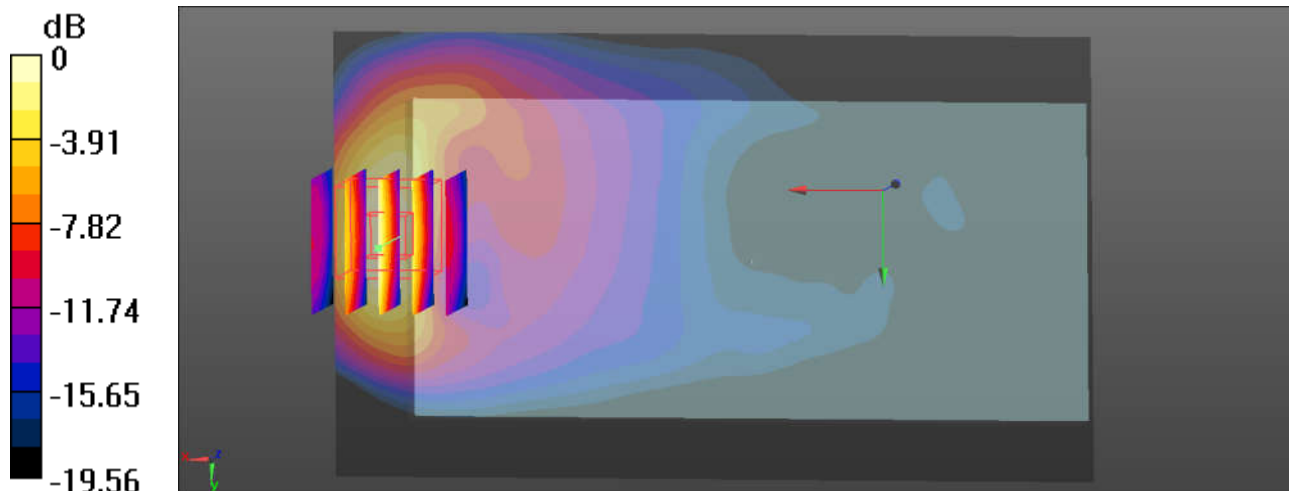
Ch1312/Zoom Scan (5x5x7)/Cube 0: Measurement grid: dx=8mm, dy=8mm, dz=5mm

Reference Value = 3.028 V/m; Power Drift = 0.04 dB

Peak SAR (extrapolated) = 1.17 W/kg

SAR(1 g) = 0.675 W/kg; SAR(10 g) = 0.342 W/kg

Maximum value of SAR (measured) = 0.912 W/kg



0 dB = 0.912 W/kg = -0.40 dBW/kg

45_WCDMA Band II_RMC 12.2Kbps_Front_5mm_Ch9400

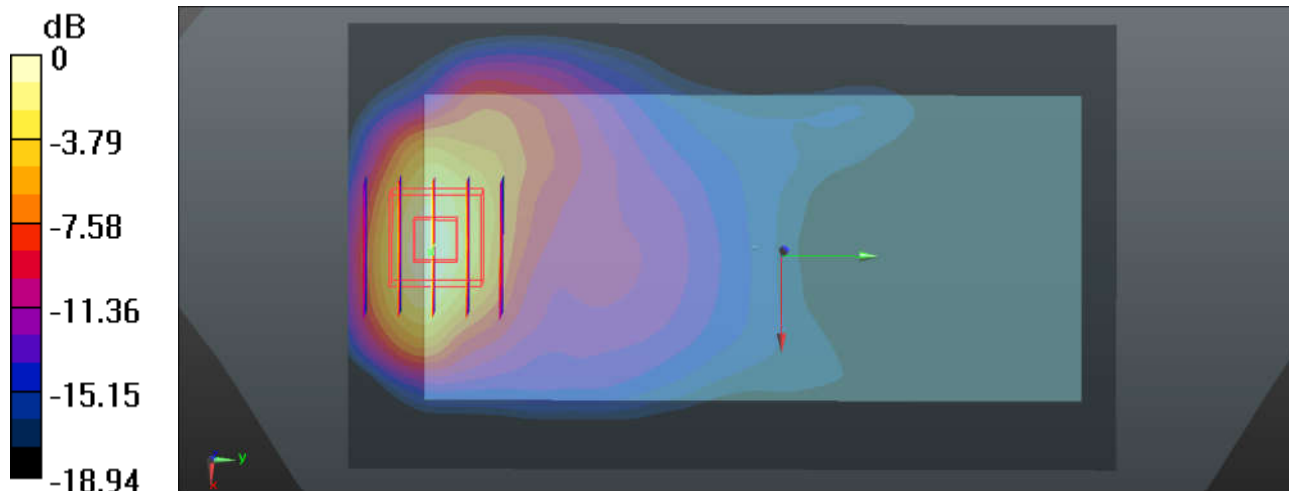
Communication System: UID 0, UMTS (0); Frequency: 1880 MHz; Duty Cycle: 1:1
Medium: MSL_1900 Medium parameters used: $f = 1880$ MHz; $\sigma = 1.497$ S/m; $\epsilon_r = 54.905$;
 $\rho = 1000$ kg/m³
Ambient Temperature : 23.3 °C ; Liquid Temperature : 22.8 °C

DASY5 Configuration:

- Probe: EX3DV4 - SN3857; ConvF(8.08, 8.08, 8.08); Calibrated: 2017.5.26;
- Sensor-Surface: 2mm (Mechanical Surface Detection)
- Electronics: DAE4 Sn1210; Calibrated: 2017.5.25
- Phantom: SAM1; Type: SAM; Serial: TP-1164
- Measurement SW: DASY52, Version 52.8 (8); SEMCAD X Version 14.6.10 (7331)

Ch9400/Area Scan (71x121x1): Interpolated grid: dx=1.500 mm, dy=1.500 mm
Maximum value of SAR (interpolated) = 0.826 W/kg

Ch9400/Zoom Scan (5x5x7)/Cube 0: Measurement grid: dx=8mm, dy=8mm, dz=5mm
Reference Value = 4.333 V/m; Power Drift = -0.02 dB
Peak SAR (extrapolated) = 1.07 W/kg
SAR(1 g) = 0.620 W/kg; SAR(10 g) = 0.320 W/kg
Maximum value of SAR (measured) = 0.861 W/kg



0 dB = 0.861 W/kg = -0.65 dBW/kg

46_CDMA2000 BC10_RC3 SO32_Front_5mm_Ch476

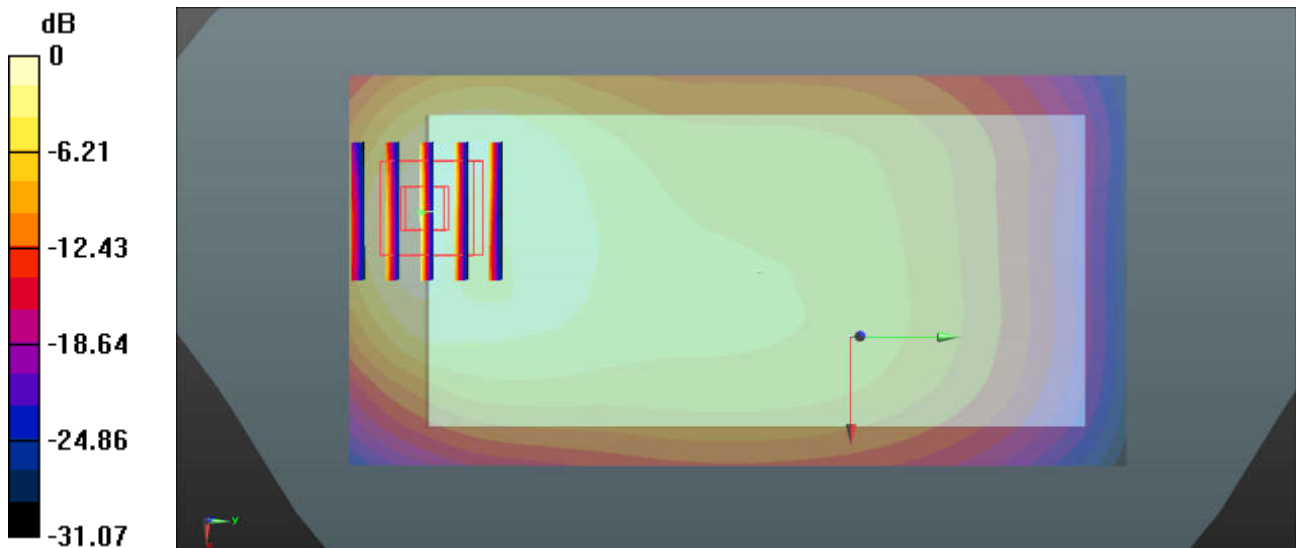
Communication System: UID 0, CDMA2000 (0); Frequency: 817.9 MHz; Duty Cycle: 1:1
 Medium: MSL_850 Medium parameters used: $f = 817.9$ MHz; $\sigma = 0.978$ S/m; $\epsilon_r = 54.806$;
 $\rho = 1000$ kg/m³
 Ambient Temperature : 23.5 °C ; Liquid Temperature : 22.6 °C

DASY5 Configuration:

- Probe: EX3DV4 - SN3857; ConvF(9.72, 9.72, 9.72); Calibrated: 2017.5.26;
- Sensor-Surface: 2mm (Mechanical Surface Detection)
- Electronics: DAE4 Sn1326; Calibrated: 2017.9.15
- Phantom: SAM2; Type: SAM; Serial: TP-1644
- Measurement SW: DASY52, Version 52.8 (8); SEMCAD X Version 14.6.10 (7331)

Ch476/Area Scan (61x121x1): Interpolated grid: $dx=1.500$ mm, $dy=1.500$ mm
 Maximum value of SAR (interpolated) = 1.54 W/kg

Ch476/Zoom Scan (5x5x7)/Cube 0: Measurement grid: $dx=8$ mm, $dy=8$ mm, $dz=5$ mm
 Reference Value = 22.85 V/m; Power Drift = -0.10 dB
 Peak SAR (extrapolated) = 2.39 W/kg
SAR(1 g) = 1.23 W/kg; SAR(10 g) = 0.661 W/kg
 Maximum value of SAR (measured) = 1.60 W/kg



0 dB = 1.54 W/kg = 1.88 dBW/kg

47_CDMA2000 BC0_RC3 SO32_Front_5mm_Ch777

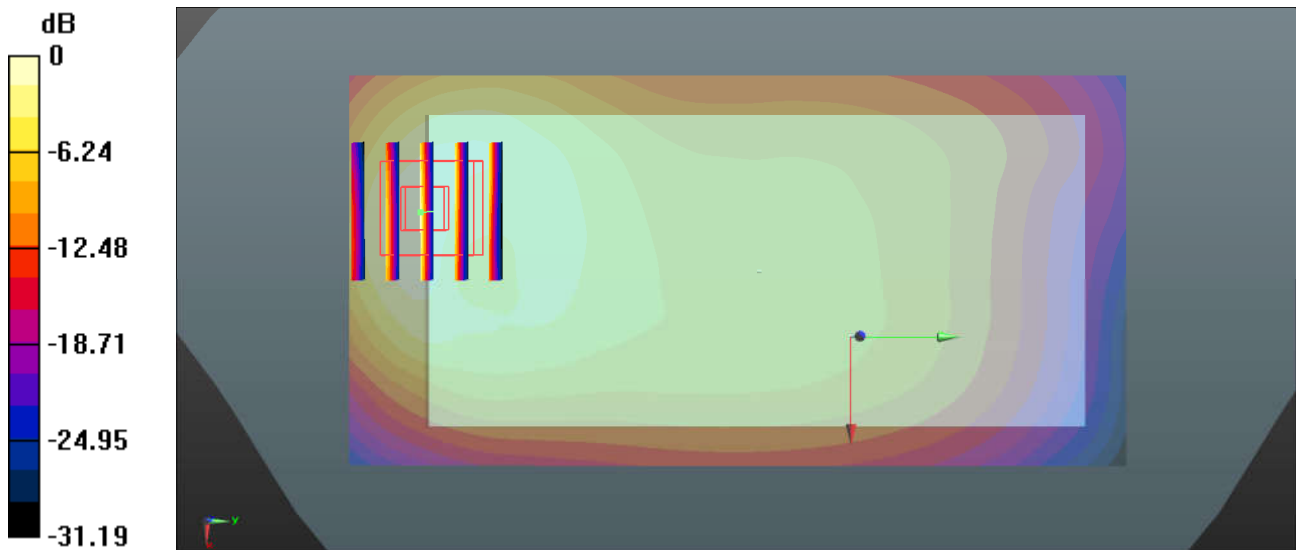
Communication System: UID 0, CDMA2000 (0); Frequency: 848.31 MHz; Duty Cycle: 1:1
 Medium: MSL_850 Medium parameters used: $f = 848.31$ MHz; $\sigma = 1.009$ S/m; $\epsilon_r = 54.499$;
 $\rho = 1000$ kg/m³
 Ambient Temperature : 23.5 °C ; Liquid Temperature : 22.6 °C

DASY5 Configuration:

- Probe: EX3DV4 - SN3857; ConvF(9.72, 9.72, 9.72); Calibrated: 2017.5.26;
- Sensor-Surface: 2mm (Mechanical Surface Detection)
- Electronics: DAE4 Sn1326; Calibrated: 2017.9.15
- Phantom: SAM2; Type: SAM; Serial: TP-1644
- Measurement SW: DASY52, Version 52.8 (8); SEMCAD X Version 14.6.10 (7331)

Ch777/Area Scan (61x121x1): Interpolated grid: dx=1.500 mm, dy=1.500 mm
 Maximum value of SAR (interpolated) = 1.63 W/kg

Ch777/Zoom Scan (5x5x7)/Cube 0: Measurement grid: dx=8mm, dy=8mm, dz=5mm
 Reference Value = 20.60 V/m; Power Drift = 0.07 dB
 Peak SAR (extrapolated) = 2.33 W/kg
SAR(1 g) = 1.21 W/kg; SAR(10 g) = 0.652 W/kg
 Maximum value of SAR (measured) = 1.58 W/kg



0 dB = 1.63 W/kg = 2.12 dBW/kg

48_CDMA2000 BC1_RC3 SO32_Front_5mm_Ch1175

Communication System: UID 0, CDMA2000 (0); Frequency: 1908.75 MHz; Duty Cycle: 1:1
Medium: MSL_1900 Medium parameters used: $f = 1908.75$ MHz; $\sigma = 1.533$ S/m; $\epsilon_r = 54.803$;

$$\rho = 1000 \text{ kg/m}^3$$

Ambient Temperature : 23.3 °C ; Liquid Temperature : 22.8 °C

DASY5 Configuration:

- Probe: EX3DV4 - SN3857; ConvF(8.08, 8.08, 8.08); Calibrated: 2017.5.26;
- Sensor-Surface: 2mm (Mechanical Surface Detection)
- Electronics: DAE4 Sn1210; Calibrated: 2017.5.25
- Phantom: SAM1; Type: SAM; Serial: TP-1164
- Measurement SW: DASY52, Version 52.8 (8); SEMCAD X Version 14.6.10 (7331)

Ch1175/Area Scan (121x71x1): Interpolated grid: $dx=1.500$ mm, $dy=1.500$ mm

Maximum value of SAR (interpolated) = 0.859 W/kg

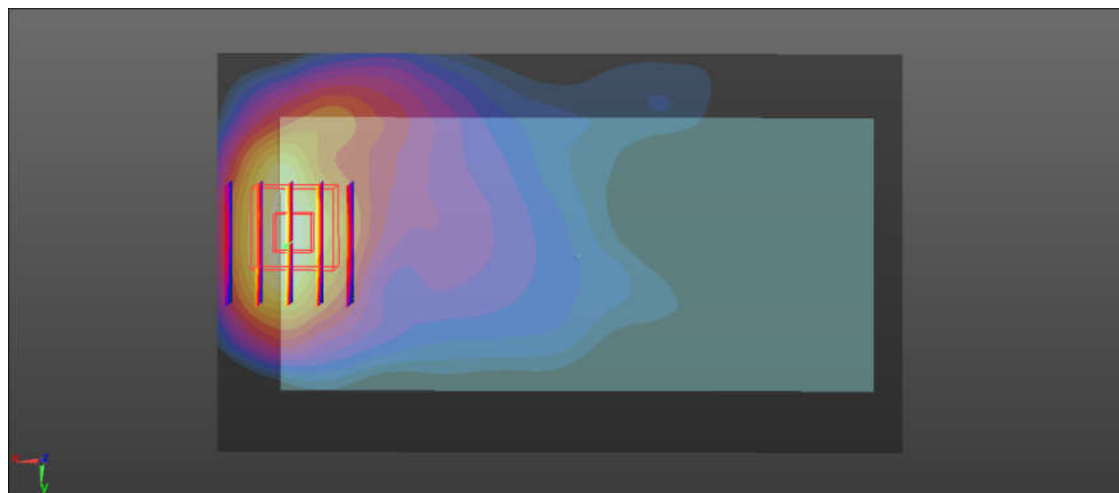
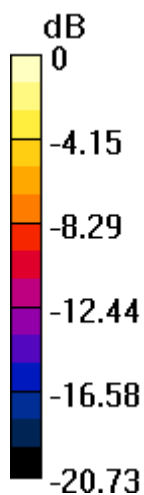
Ch1175/Zoom Scan (5x5x7)/Cube 0: Measurement grid: $dx=8$ mm, $dy=8$ mm, $dz=5$ mm

Reference Value = 3.345 V/m; Power Drift = -0.14 dB

Peak SAR (extrapolated) = 1.18 W/kg

SAR(1 g) = 0.642 W/kg; SAR(10 g) = 0.324 W/kg

Maximum value of SAR (measured) = 0.901 W/kg



0 dB = 0.901 W/kg = -0.45 dBW/kg

49_LTE Band 12_10M_QPSK_1RB_0Offset_Front_5mm_Ch23095

Communication System: UID 0, FDD_LTE (0); Frequency: 707.5 MHz; Duty Cycle: 1:1
 Medium: MSL_750 Medium parameters used: $f = 707.5$ MHz; $\sigma = 0.935$ S/m; $\epsilon_r = 56.875$;

$\rho = 1000$ kg/m³

Ambient Temperature : 23.3 °C ; Liquid Temperature : 22.7 °C

DASY5 Configuration:

- Probe: EX3DV4 - SN3857; ConvF(9.96, 9.96, 9.96); Calibrated: 2017.5.26;
- Sensor-Surface: 2mm (Mechanical Surface Detection)
- Electronics: DAE4 Sn1326; Calibrated: 2017.9.644839
- Phantom: SAM2; Type: SAM; Serial: TP-1644
- Measurement SW: DASY52, Version 52.8 (8); SEMCAD X Version 14.6.10 (7331)

Ch23095/Area Scan (61x121x1): Interpolated grid: dx=1.500 mm, dy=1.500 mm

Maximum value of SAR (interpolated) = 0.817 W/kg

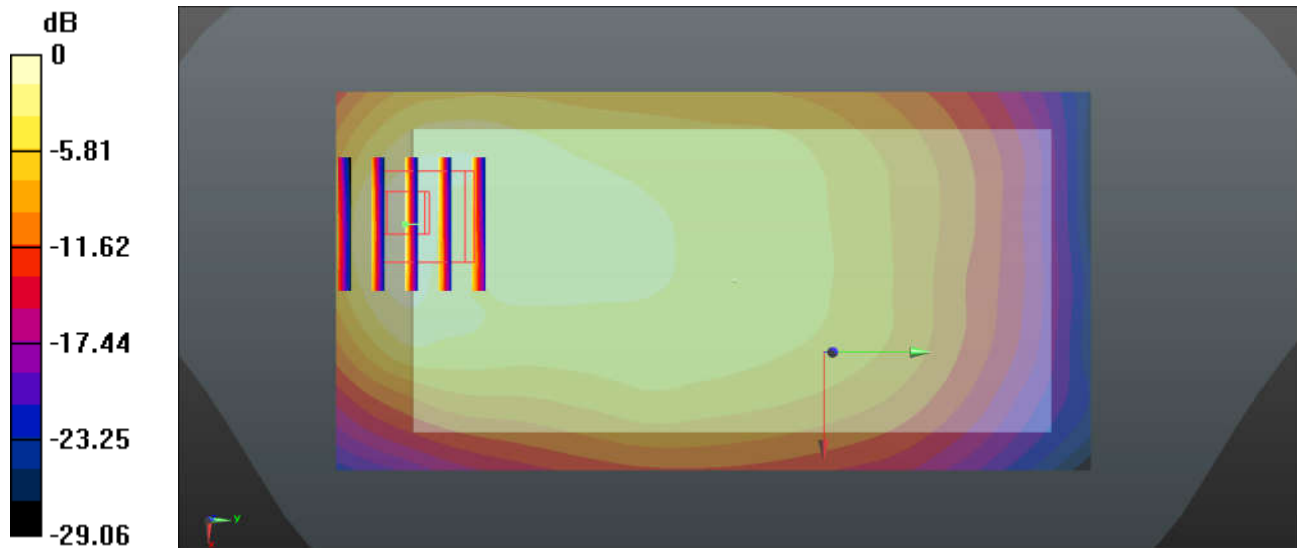
Ch23095/Zoom Scan (5x5x7)/Cube 0: Measurement grid: dx=8mm, dy=8mm, dz=5mm

Reference Value = 20.37 V/m; Power Drift = -0.13 dB

Peak SAR (extrapolated) = 0.980 W/kg

SAR(1 g) = 0.531 W/kg; SAR(10 g) = 0.302 W/kg

Maximum value of SAR (measured) = 0.704 W/kg



0 dB = 0.817 W/kg = -0.88 dBW/kg

50_LTE Band 13_10M_QPSK_1RB_0Offset_Front_5mm_Ch23230

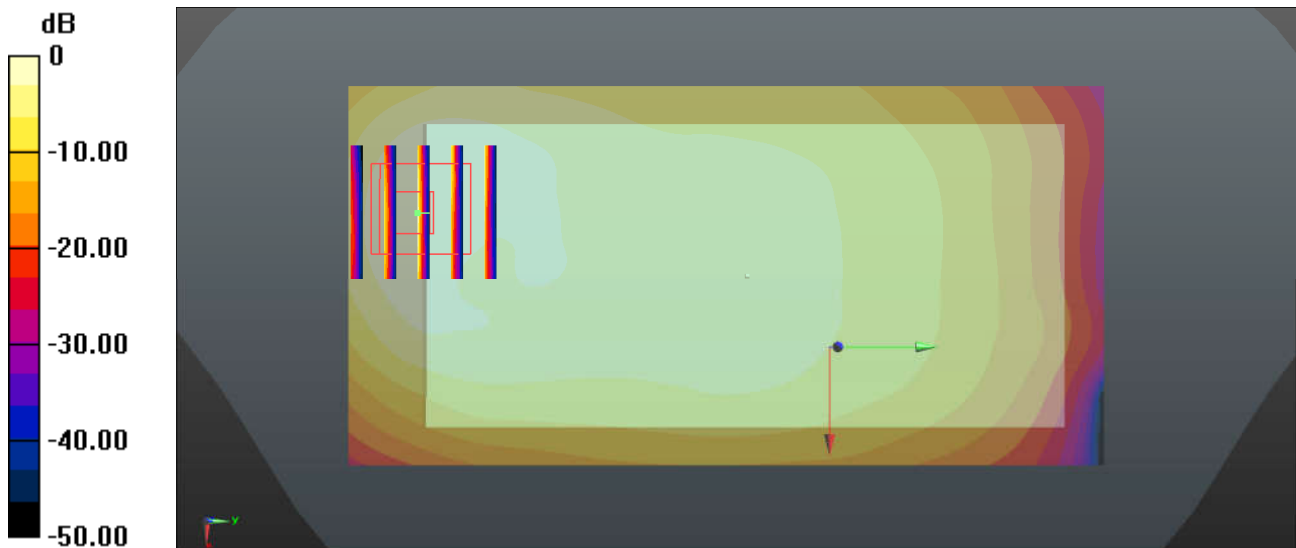
Communication System: UID 0, FDD_LTE (0); Frequency: 782 MHz; Duty Cycle: 1:1
 Medium: MSL_850 Medium parameters used: $f = 782 \text{ MHz}$; $\sigma = 0.941 \text{ S/m}$; $\epsilon_r = 55.169$;
 $\rho = 1000 \text{ kg/m}^3$
 Ambient Temperature : $23.5 \text{ }^\circ\text{C}$; Liquid Temperature : $22.6 \text{ }^\circ\text{C}$

DASY5 Configuration:

- Probe: EX3DV4 - SN3857; ConvF(9.96, 9.96, 9.96); Calibrated: 2017.5.26;
- Sensor-Surface: 2mm (Mechanical Surface Detection)
- Electronics: DAE4 Sn1326; Calibrated: 2017.9.15
- Phantom: SAM2; Type: SAM; Serial: TP-1644
- Measurement SW: DASY52, Version 52.8 (8); SEMCAD X Version 14.6.10 (7331)

Ch23230/Area Scan (61x121x1): Interpolated grid: $dx=1.500 \text{ mm}$, $dy=1.500 \text{ mm}$
 Maximum value of SAR (interpolated) = 0.980 W/kg

Ch23230/Zoom Scan (5x5x7)/Cube 0: Measurement grid: $dx=8\text{mm}$, $dy=8\text{mm}$, $dz=5\text{mm}$
 Reference Value = 20.21 V/m ; Power Drift = 0.09 dB
 Peak SAR (extrapolated) = 2.31 W/kg
SAR(1 g) = 0.831 W/kg ; SAR(10 g) = 0.414 W/kg
 Maximum value of SAR (measured) = 1.13 W/kg



$0 \text{ dB} = 0.980 \text{ W/kg} = -0.09 \text{ dBW/kg}$

51_LTE Band 26_15M_QPSK_1RB_74Offset_Front_5mm_Ch26865

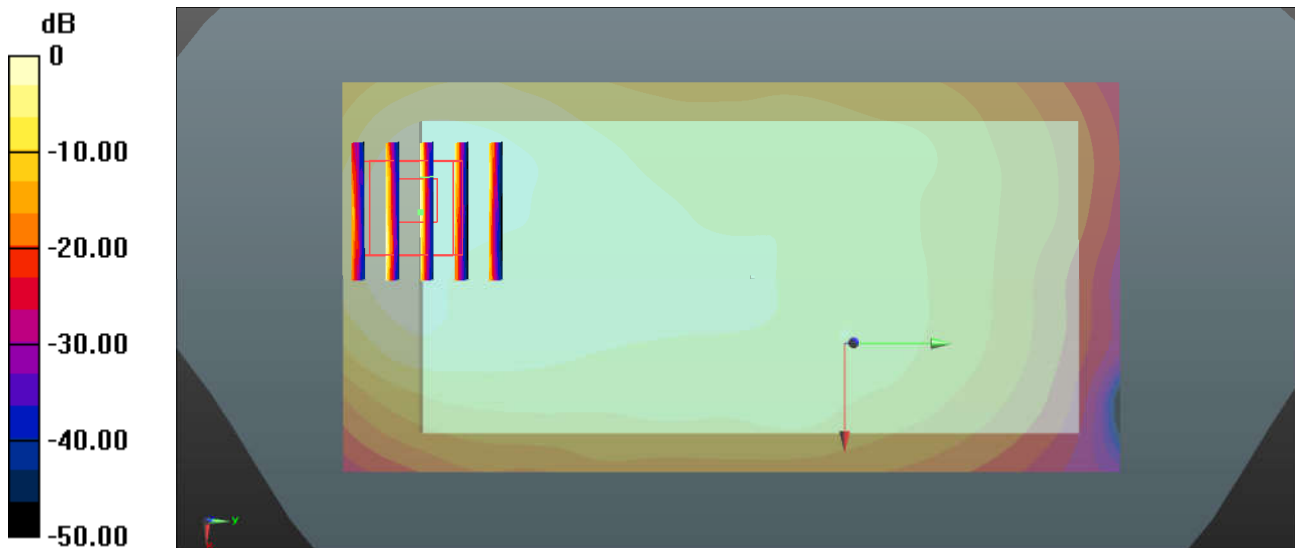
Communication System: UID 0, FDD_LTE (0); Frequency: 831.5 MHz; Duty Cycle: 1:1
 Medium: MSL_850 Medium parameters used: $f = 831.5$ MHz; $\sigma = 0.991$ S/m; $\epsilon_r = 54.669$;
 $\rho = 1000$ kg/m³
 Ambient Temperature : 23.5 °C ; Liquid Temperature : 22.6 °C

DASY5 Configuration:

- Probe: EX3DV4 - SN3857; ConvF(9.72, 9.72, 9.72); Calibrated: 2017.5.26;
- Sensor-Surface: 2mm (Mechanical Surface Detection)
- Electronics: DAE4 Sn1326; Calibrated: 2017.9.15
- Phantom: SAM2; Type: SAM; Serial: TP-1644
- Measurement SW: DASY52, Version 52.8 (8); SEMCAD X Version 14.6.10 (7331)

Ch26865/Area Scan (61x121x1): Interpolated grid: dx=1.500 mm, dy=1.500 mm
 Maximum value of SAR (interpolated) = 1.34 W/kg

Ch26865/Zoom Scan (5x5x7)/Cube 0: Measurement grid: dx=8mm, dy=8mm, dz=5mm
 Reference Value = 21.74 V/m; Power Drift = -0.01 dB
 Peak SAR (extrapolated) = 1.74 W/kg
SAR(1 g) = 1.01 W/kg; SAR(10 g) = 0.557 W/kg
 Maximum value of SAR (measured) = 1.23 W/kg



0 dB = 1.34 W/kg = 1.27 dBW/kg

52_LTE Band 66_20M_QPSK_1RB_99Offset_Front_5mm_Ch132572

Communication System: UID 0, FDD_LTE (0); Frequency: 1770 MHz; Duty Cycle: 1:1
Medium: MSL_1750 Medium parameters used: $f = 1770$ MHz; $\sigma = 1.485$ S/m; $\epsilon_r = 53.513$;

$$\rho = 1000 \text{ kg/m}^3$$

Ambient Temperature : 23.5 °C ; Liquid Temperature : 22.6 °C

DASY5 Configuration:

- Probe: EX3DV4 - SN3857; ConvF(8.29, 8.29, 8.29); Calibrated: 2017.5.26;
- Sensor-Surface: 2mm (Mechanical Surface Detection)
- Electronics: DAE4 Sn1210; Calibrated: 2017.5.25
- Phantom: SAM1; Type: SAM; Serial: TP-1164
- Measurement SW: DASY52, Version 52.8 (8); SEMCAD X Version 14.6.10 (7331)

Ch132572/Area Scan (131x71x1): Interpolated grid: dx=1.500 mm, dy=1.500 mm

Maximum value of SAR (interpolated) = 0.842 W/kg

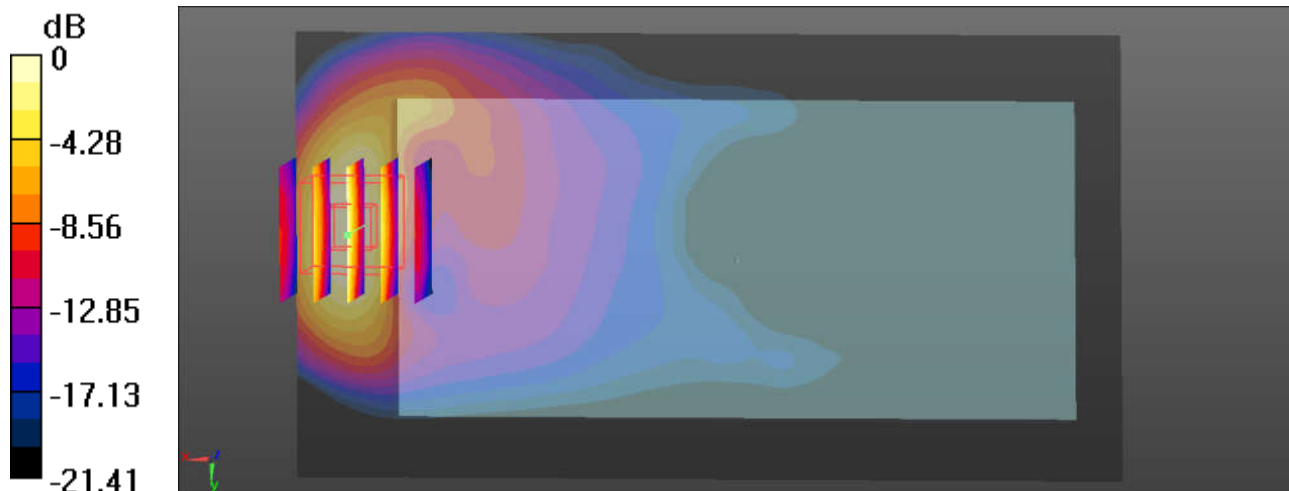
Ch132572/Zoom Scan (5x5x7)/Cube 0: Measurement grid: dx=8mm, dy=8mm, dz=5mm

Reference Value = 1.758 V/m; Power Drift = 0.09 dB

Peak SAR (extrapolated) = 1.08 W/kg

SAR(1 g) = 0.593 W/kg; SAR(10 g) = 0.297 W/kg

Maximum value of SAR (measured) = 0.847 W/kg



$$0 \text{ dB} = 0.847 \text{ W/kg} = -0.72 \text{ dBW/kg}$$

53_LTE Band 25_20M_QPSK_1RB_0Offset_Front_5mm_Ch26140

Communication System: UID 0, FDD_LTE (0); Frequency: 1860 MHz; Duty Cycle: 1:1
Medium: MSL_1900 Medium parameters used: $f = 1860$ MHz; $\sigma = 1.475$ S/m; $\epsilon_r = 54.973$;

$$\rho = 1000 \text{ kg/m}^3$$

Ambient Temperature : 23.3 °C ; Liquid Temperature : 22.8 °C

DASY5 Configuration:

- Probe: EX3DV4 - SN3857; ConvF(8.08, 8.08, 8.08); Calibrated: 2017.5.26;
- Sensor-Surface: 2mm (Mechanical Surface Detection)
- Electronics: DAE4 Sn1210; Calibrated: 2017.5.25
- Phantom: SAM1; Type: SAM; Serial: TP-1164
- Measurement SW: DASY52, Version 52.8 (8); SEMCAD X Version 14.6.10 (7331)

Ch26140/Area Scan (71x121x1): Interpolated grid: dx=1.500 mm, dy=1.500 mm

Maximum value of SAR (interpolated) = 0.901 W/kg

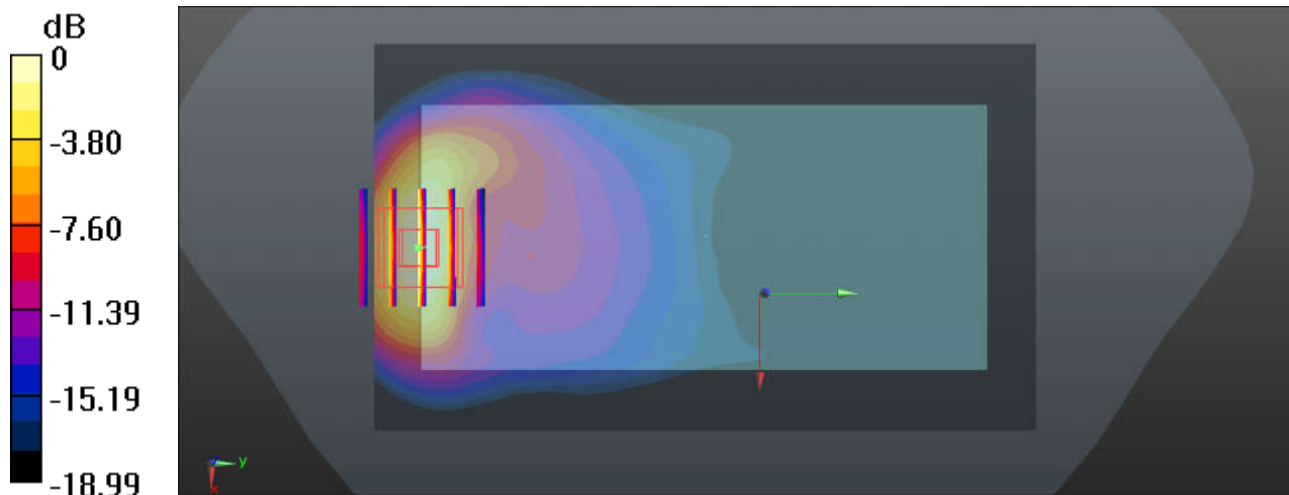
Ch26140/Zoom Scan (5x5x7)/Cube 0: Measurement grid: dx=8mm, dy=8mm, dz=5mm

Reference Value = 3.681 V/m; Power Drift = 0.17 dB

Peak SAR (extrapolated) = 1.14 W/kg

SAR(1 g) = 0.633 W/kg; SAR(10 g) = 0.315 W/kg

Maximum value of SAR (measured) = 0.916 W/kg



0 dB = 0.916 W/kg = -0.38 dBW/kg

54_LTE Band 30_10M_QPSK_1RB_0Offset_Front_5mm_Ch27710

Communication System: UID 0, FDD_LTE (0); Frequency: 2310 MHz; Duty Cycle: 1:1
Medium: MSL_2300 Medium parameters used: $f = 2310$ MHz; $\sigma = 1.827$ S/m; $\epsilon_r = 53.206$;

$$\rho = 1000 \text{ kg/m}^3$$

Ambient Temperature : 23.4 °C ; Liquid Temperature : 22.8 °C

DASY5 Configuration:

- Probe: EX3DV4 - SN3857; ConvF(7.87, 7.87, 7.87); Calibrated: 2017.5.26;
- Sensor-Surface: 2mm (Mechanical Surface Detection)
- Electronics: DAE4 Sn1210; Calibrated: 2017.5.25
- Phantom: SAM1; Type: SAM; Serial: TP-1164
- Measurement SW: DASY52, Version 52.8 (8); SEMCAD X Version 14.6.10 (7331)

Ch27710/Area Scan (71x151x1): Interpolated grid: $dx=1.200$ mm, $dy=1.200$ mm

Maximum value of SAR (interpolated) = 1.23 W/kg

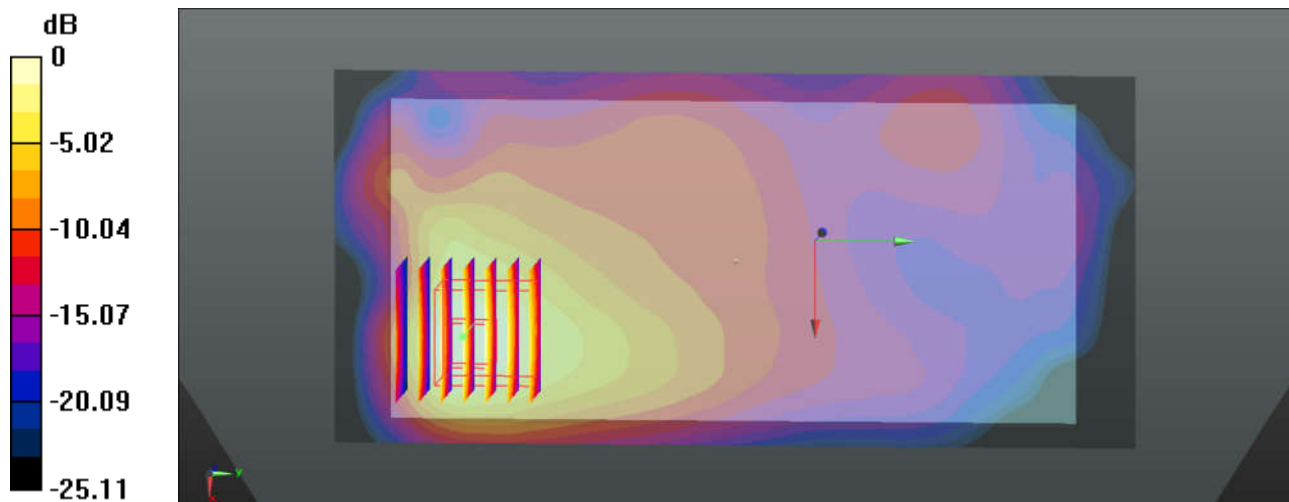
Ch27710/Zoom Scan (7x7x7)/Cube 0: Measurement grid: $dx=5$ mm, $dy=5$ mm, $dz=5$ mm

Reference Value = 7.083 V/m; Power Drift = 0.13 dB

Peak SAR (extrapolated) = 1.47 W/kg

SAR(1 g) = 0.777 W/kg; SAR(10 g) = 0.378 W/kg

Maximum value of SAR (measured) = 1.11 W/kg



0 dB = 1.11 W/kg = 0.45 dBW/kg

55_LTE Band 7_20M_QPSK_1RB_0Offset_Front_5mm_Ch20850

Communication System: UID 0, FDD_LTE (0); Frequency: 2510 MHz; Duty Cycle: 1:1
Medium: MSL_2600 Medium parameters used: $f = 2510$ MHz; $\sigma = 2.105$ S/m; $\epsilon_r = 52.51$;

$$\rho = 1000 \text{ kg/m}^3$$

Ambient Temperature : 23.5 °C ; Liquid Temperature : 22.6 °C

DASY5 Configuration:

- Probe: EX3DV4 - SN3857; ConvF(7.59, 7.59, 7.59); Calibrated: 2017.5.26;
- Sensor-Surface: 2mm (Mechanical Surface Detection)
- Electronics: DAE4 Sn1210; Calibrated: 2017.5.25
- Phantom: SAM1; Type: SAM; Serial: TP-1164
- Measurement SW: DASY52, Version 52.8 (8); SEMCAD X Version 14.6.10 (7331)

Ch20850/Area Scan (81x151x1): Interpolated grid: dx=1.200 mm, dy=1.200 mm

Maximum value of SAR (interpolated) = 1.43 W/kg

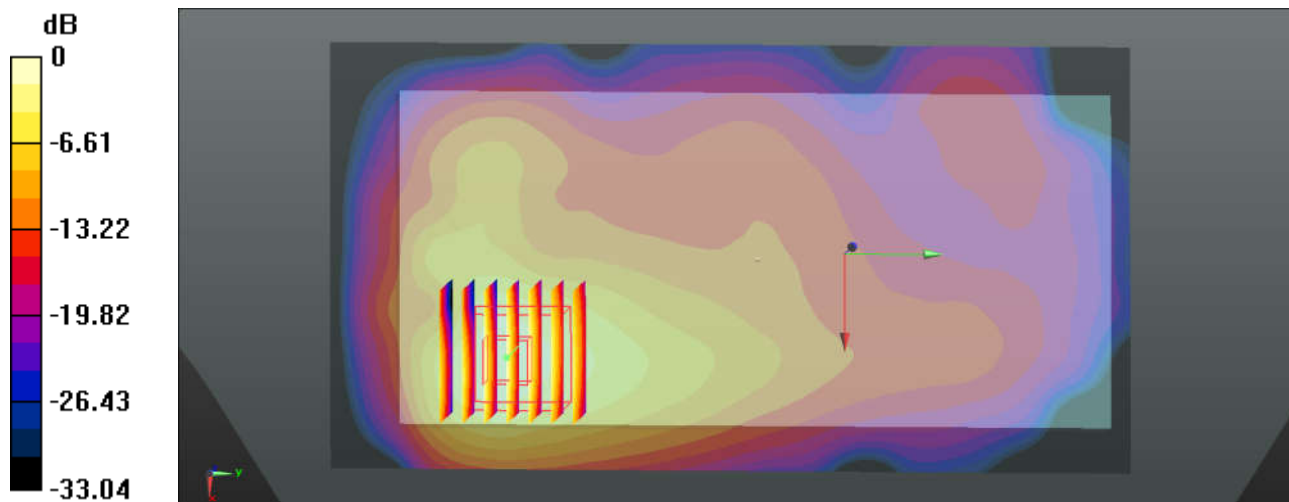
Ch20850/Zoom Scan (7x7x7)/Cube 0: Measurement grid: dx=5mm, dy=5mm, dz=5mm

Reference Value = 5.985 V/m; Power Drift = -0.15 dB

Peak SAR (extrapolated) = 1.75 W/kg

SAR(1 g) = 0.907 W/kg; SAR(10 g) = 0.415 W/kg

Maximum value of SAR (measured) = 1.33 W/kg



0 dB = 1.33 W/kg = 1.24 dBW/kg

56_LTE Band 41_20M_QPSK_1RB_0Offset_Front_5mm_Ch39750

Communication System: UID 0, TDD_LTE (0); Frequency: 2506 MHz; Duty Cycle: 1:1.59
Medium: MSL_2600 Medium parameters used: $f = 2506$ MHz; $\sigma = 2.099$ S/m; $\epsilon_r = 52.523$;

$$\rho = 1000 \text{ kg/m}^3$$

Ambient Temperature : 23.5 °C ; Liquid Temperature : 22.6 °C

DASY5 Configuration:

- Probe: EX3DV4 - SN3857; ConvF(7.7, 7.7, 7.7); Calibrated: 2017.5.26;
- Sensor-Surface: 2mm (Mechanical Surface Detection)
- Electronics: DAE4 Sn1210; Calibrated: 2017.5.25
- Phantom: SAM1; Type: SAM; Serial: TP-1164
- Measurement SW: DASY52, Version 52.8 (8); SEMCAD X Version 14.6.10 (7331)

Ch39750/Area Scan (151x81x1): Interpolated grid: $dx=1.200$ mm, $dy=1.200$ mm

Maximum value of SAR (interpolated) = 1.59 W/kg

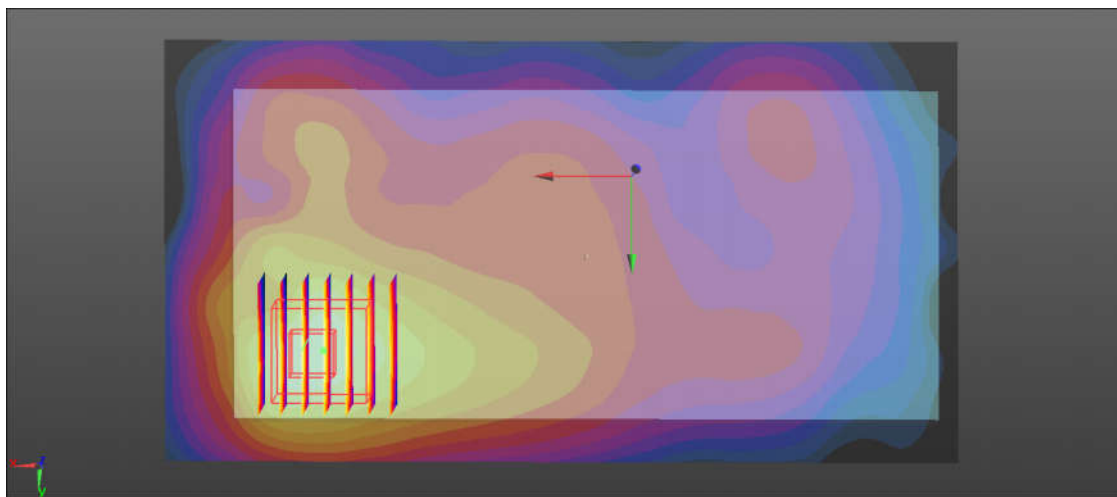
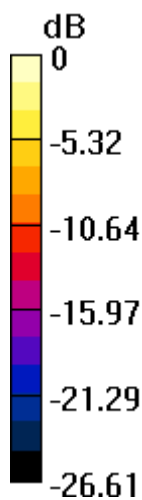
Ch39750/Zoom Scan (7x7x7)/Cube 0: Measurement grid: $dx=5$ mm, $dy=5$ mm, $dz=5$ mm

Reference Value = 6.173 V/m; Power Drift = -0.04 dB

Peak SAR (extrapolated) = 1.70 W/kg

SAR(1 g) = 1.02 W/kg; SAR(10 g) = 0.470 W/kg

Maximum value of SAR (measured) = 1.66 W/kg



0 dB = 1.66 W/kg = 2.20 dBW/kg

57_WLAN2.4GHz_802.11b 1Mbps_Back_5mm_Ch6

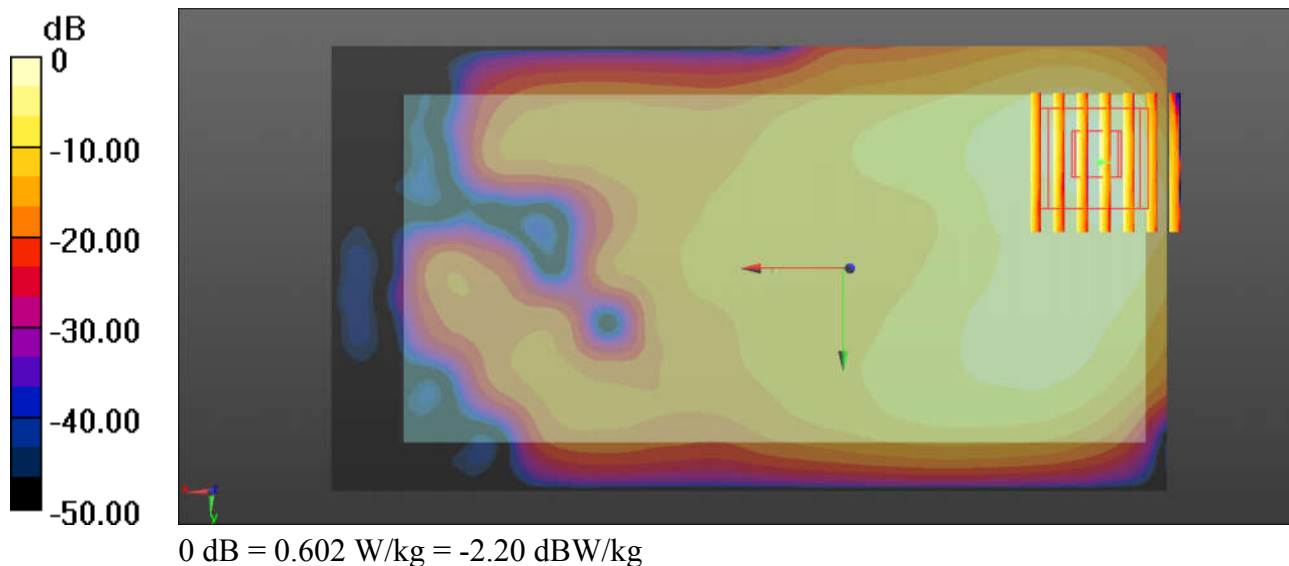
Communication System: UID 0, WIFI (0); Frequency: 2437 MHz; Duty Cycle: 1:1.021
Medium: MSL_2450 Medium parameters used: $f = 2437$ MHz; $\sigma = 1.972$ S/m; $\epsilon_r = 52.871$;
 $\rho = 1000$ kg/m³
Ambient Temperature : 23.4 °C ; Liquid Temperature : 22.6 °C

DASY5 Configuration:

- Probe: EX3DV4 - SN3857; ConvF(7.7, 7.7, 7.7); Calibrated: 2017.5.26;
- Sensor-Surface: 2mm (Mechanical Surface Detection)
- Electronics: DAE4 Sn1210; Calibrated: 2017.5.25
- Phantom: SAM1; Type: SAM; Serial: TP-1164
- Measurement SW: DASY52, Version 52.8 (8); SEMCAD X Version 14.6.10 (7331)

Ch6/Area Scan (151x81x1): Interpolated grid: dx=1.200 mm, dy=1.200 mm
Maximum value of SAR (interpolated) = 0.605 W/kg

Ch6/Zoom Scan (7x7x7)/Cube 0: Measurement grid: dx=5mm, dy=5mm, dz=5mm
Reference Value = 4.263 V/m; Power Drift = 0.08 dB
Peak SAR (extrapolated) = 0.840 W/kg
SAR(1 g) = 0.368 W/kg; SAR(10 g) = 0.154 W/kg
Maximum value of SAR (measured) = 0.602 W/kg



58_WLAN5.3GHz_802.11a 6Mbps_Front_5mm_Ch56

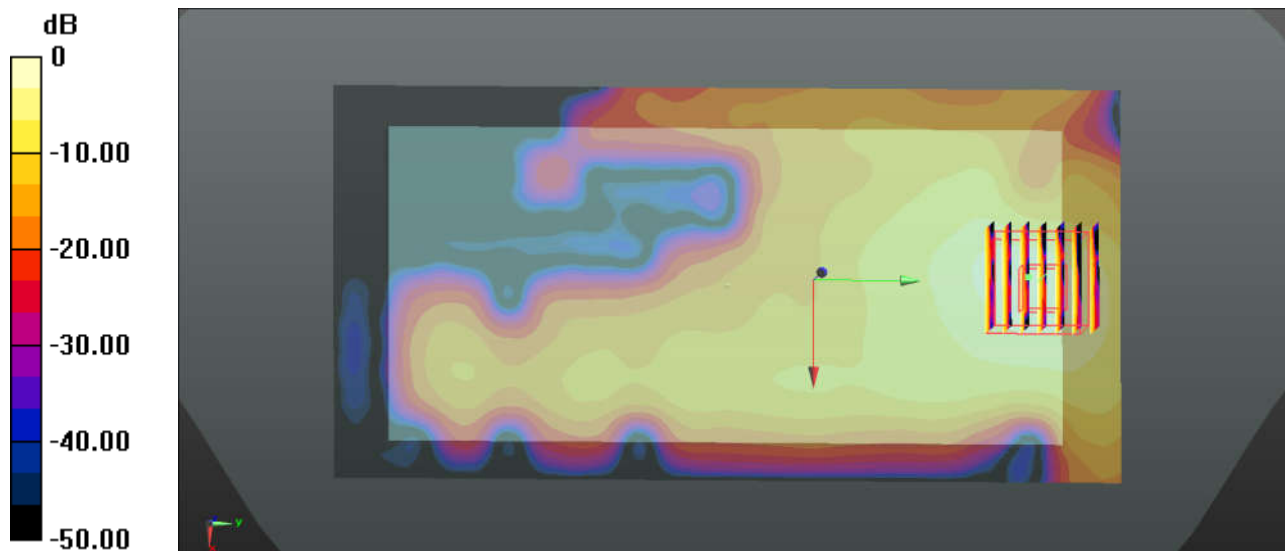
Communication System: UID 0, WIFI (0); Frequency: 5280 MHz; Duty Cycle: 1:1.137
Medium: MSL_5000 Medium parameters used: $f = 5280$ MHz; $\sigma = 5.54$ S/m; $\epsilon_r = 47.896$;
 $\rho = 1000$ kg/m³
Ambient Temperature : 23.3 °C ; Liquid Temperature : 22.7 °C

DASY5 Configuration:

- Probe: EX3DV4 - SN3898; ConvF(5.13, 5.13, 5.13); Calibrated: 2017.6.27;
- Sensor-Surface: 1.4mm (Mechanical Surface Detection)
- Electronics: DAE4 Sn1338; Calibrated: 2017.12.4
- Phantom: SAM2; Type: SAM; Serial: TP-1489
- Measurement SW: DASY52, Version 52.8 (8); SEMCAD X Version 14.6.10 (7331)

Ch56/Area Scan (91x181x1): Interpolated grid: dx=1.000 mm, dy=1.000 mm
Maximum value of SAR (interpolated) = 2.38 W/kg

Ch56/Zoom Scan (7x7x7)/Cube 0: Measurement grid: dx=4mm, dy=4mm, dz=1.4mm
Reference Value = 2.775 V/m; Power Drift = -0.07 dB
Peak SAR (extrapolated) = 3.58 W/kg
SAR(1 g) = 0.914 W/kg; SAR(10 g) = 0.326 W/kg
Maximum value of SAR (measured) = 2.10 W/kg



0 dB = 2.10 W/kg = 3.22 dBW/kg

59_WLAN5.5GHz_802.11a 6Mbps_Back_5mm_Ch124

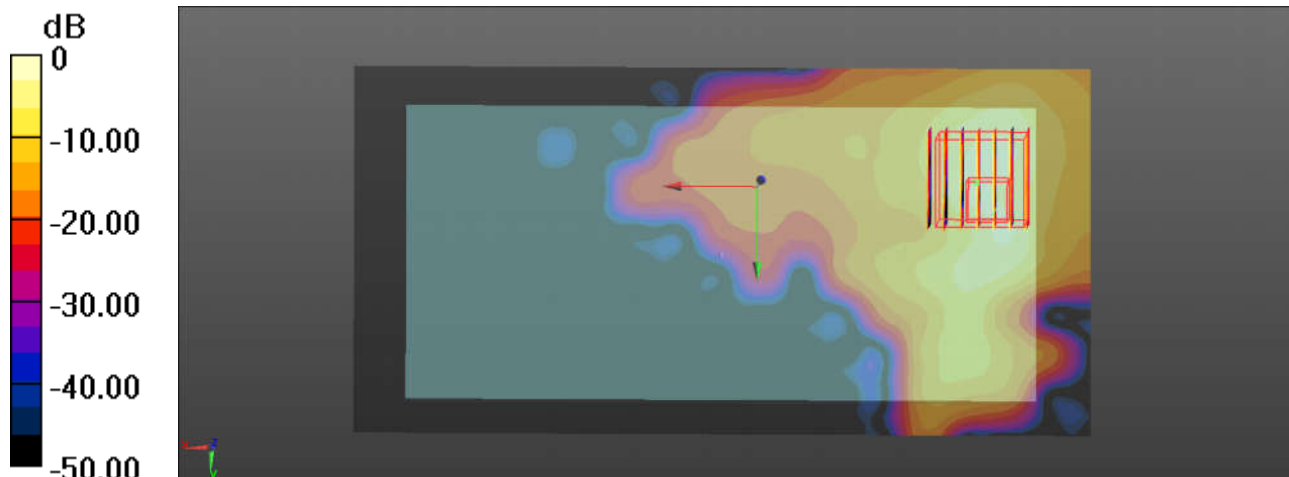
Communication System: UID 0, WIFI (0); Frequency: 5620 MHz; Duty Cycle: 1:1.137
Medium: MSL_5000 Medium parameters used: $f = 5620$ MHz; $\sigma = 5.982$ S/m; $\epsilon_r = 47.336$;
 $\rho = 1000$ kg/m³
Ambient Temperature : 23.3 °C ; Liquid Temperature : 22.7 °C

DASY5 Configuration:

- Probe: EX3DV4 - SN3898; ConvF(4.14, 4.14, 4.14); Calibrated: 2017.6.27;
- Sensor-Surface: 1.4mm (Mechanical Surface Detection)
- Electronics: DAE4 Sn1338; Calibrated: 2017.12.4
- Phantom: SAM2; Type: SAM; Serial: TP-1489
- Measurement SW: DASY52, Version 52.8 (8); SEMCAD X Version 14.6.10 (7331)

Ch124/Area Scan (181x91x1): Interpolated grid: dx=1.000 mm, dy=1.000 mm
Maximum value of SAR (interpolated) = 1.45 W/kg

Ch124/Zoom Scan (7x7x7)/Cube 0: Measurement grid: dx=4mm, dy=4mm, dz=1.4mm
Reference Value = 0.509 V/m; Power Drift = 0.08 dB
Peak SAR (extrapolated) = 4.32 W/kg
SAR(1 g) = 0.850 W/kg; SAR(10 g) = 0.210 W/kg
Maximum value of SAR (measured) = 2.35 W/kg



0 dB = 2.35 W/kg = 3.71 dBW/kg

60_WLAN5.8GHz_802.11a 6Mbps_Back_5mm_Ch149

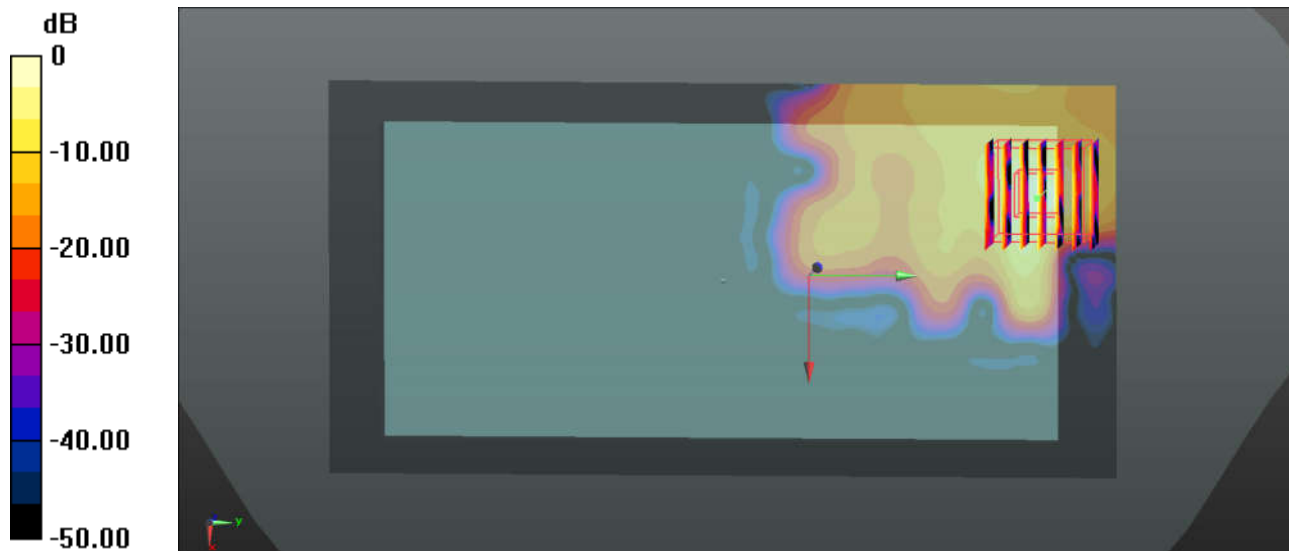
Communication System: UID 0, WIFI (0); Frequency: 5745 MHz; Duty Cycle: 1:1.137
Medium: MSL_5000 Medium parameters used: $f = 5745$ MHz; $\sigma = 6.147$ S/m; $\epsilon_r = 47.128$;
 $\rho = 1000$ kg/m³
Ambient Temperature : 23.5 °C ; Liquid Temperature : 22.8 °C

DASY5 Configuration:

- Probe: EX3DV4 - SN3898; ConvF(4.5, 4.5, 4.5); Calibrated: 2017.6.27;
- Sensor-Surface: 1.4mm (Mechanical Surface Detection)
- Electronics: DAE4 Sn1338; Calibrated: 2017.12.4
- Phantom: SAM2; Type: SAM; Serial: TP-1489
- Measurement SW: DASY52, Version 52.8 (8); SEMCAD X Version 14.6.10 (7331)

Ch149/Area Scan (91x181x1): Interpolated grid: dx=1.000 mm, dy=1.000 mm
Maximum value of SAR (interpolated) = 1.69 W/kg

Ch149/Zoom Scan (7x7x7)/Cube 0: Measurement grid: dx=4mm, dy=4mm, dz=1.4mm
Reference Value = 1.313 V/m; Power Drift = 0.01 dB
Peak SAR (extrapolated) = 4.42 W/kg
SAR(1 g) = 0.801 W/kg; SAR(10 g) = 0.190 W/kg
Maximum value of SAR (measured) = 2.46 W/kg



0 dB = 2.46 W/kg = 3.91 dBW/kg

61_Bluetooth_1Mbps_Back_5mm_Ch39

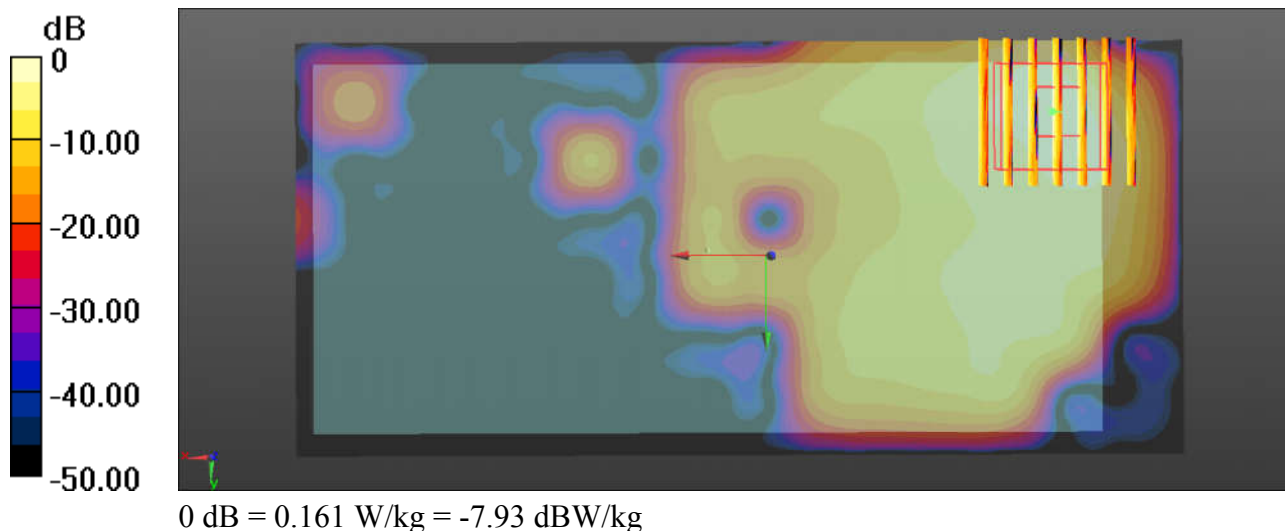
Communication System: UID 0, Bluetooth (0); Frequency: 2441 MHz; Duty Cycle: 1:1.299
Medium: MSL_2450 Medium parameters used: $f = 2441$ MHz; $\sigma = 1.978$ S/m; $\epsilon_r = 52.858$;
 $\rho = 1000$ kg/m³
Ambient Temperature : 23.4 °C ; Liquid Temperature : 22.6 °C

DASY5 Configuration:

- Probe: EX3DV4 - SN3857; ConvF(7.7, 7.7, 7.7); Calibrated: 2017.5.26;
- Sensor-Surface: 2mm (Mechanical Surface Detection)
- Electronics: DAE4 Sn1210; Calibrated: 2017.5.25
- Phantom: SAM1; Type: SAM; Serial: TP-1164
- Measurement SW: DASY52, Version 52.8 (8); SEMCAD X Version 14.6.10 (7331)

Ch78/Area Scan (151x71x1): Interpolated grid: dx=1.200 mm, dy=1.200 mm
Maximum value of SAR (interpolated) = 0.165 W/kg

Ch78/Zoom Scan (7x7x7)/Cube 0: Measurement grid: dx=5mm, dy=5mm, dz=5mm
Reference Value = 2.148 V/m; Power Drift = -0.17 dB
Peak SAR (extrapolated) = 0.187 W/kg
SAR(1 g) = 0.093 W/kg; SAR(10 g) = 0.038 W/kg
Maximum value of SAR (measured) = 0.161 W/kg



62_GSM1900_GPRS 2 Tx slots_Bottom Side_0mm_Ch512

Communication System: UID 0, GPRS/EDGE (2 Tx slots) (0); Frequency: 1850.2 MHz; Duty Cycle: 1:4.15
Medium: MSL_1900 Medium parameters used: $f = 1850.2$ MHz; $\sigma = 1.464$ S/m; $\epsilon_r = 55.009$;

$\rho = 1000$ kg/m³

Ambient Temperature : 23.3 °C ; Liquid Temperature : 22.8 °C

DASY5 Configuration:

- Probe: EX3DV4 - SN3857; ConvF(8.08, 8.08, 8.08); Calibrated: 2017.5.26;
- Sensor-Surface: 2mm (Mechanical Surface Detection)
- Electronics: DAE4 Sn1210; Calibrated: 2017.5.25
- Phantom: SAM1; Type: SAM; Serial: TP-1164
- Measurement SW: DASY52, Version 52.8 (8); SEMCAD X Version 14.6.10 (7331)

Ch512/Area Scan (41x81x1): Interpolated grid: dx=1.500 mm, dy=1.500 mm

Maximum value of SAR (interpolated) = 10.2 W/kg

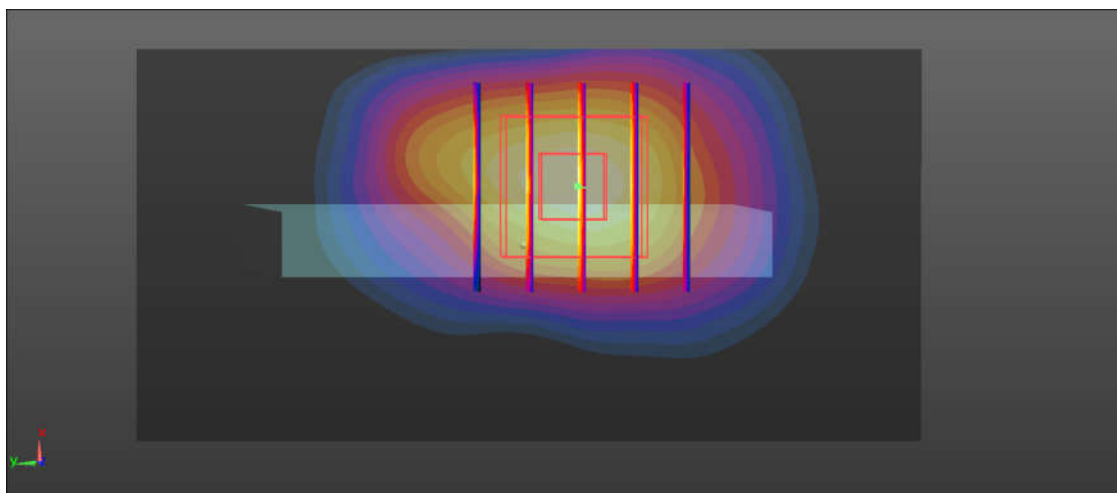
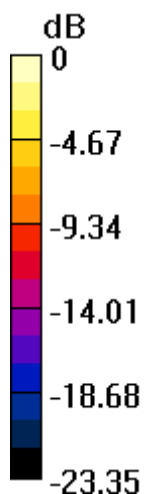
Ch512/Zoom Scan (5x5x7)/Cube 0: Measurement grid: dx=8mm, dy=8mm, dz=5mm

Reference Value = 40.17 V/m; Power Drift = -0.12 dB

Peak SAR (extrapolated) = 13.1 W/kg

SAR(1 g) = 6.49 W/kg; SAR(10 g) = 2.85 W/kg

Maximum value of SAR (measured) = 9.95 W/kg



0 dB = 9.95 W/kg = 9.98 dBW/kg

63_WCDMA Band IV_RMC 12.2Kbps_Bottom Side_0mm_Ch1413

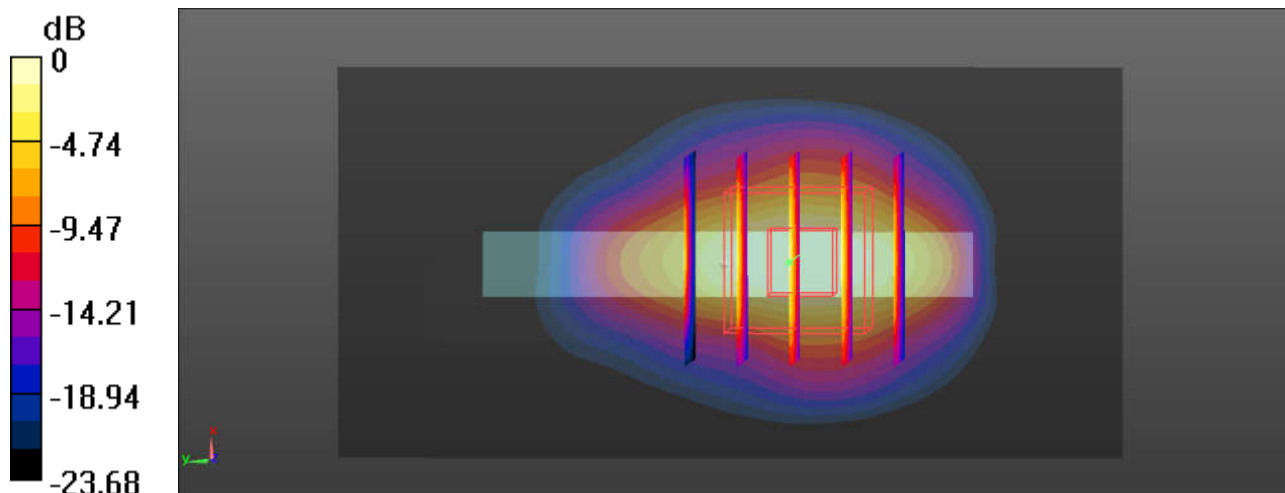
Communication System: UID 0, UMTS (0); Frequency: 1732.6 MHz; Duty Cycle: 1:1
Medium: MSL_1750 Medium parameters used: $f = 1732.6$ MHz; $\sigma = 1.446$ S/m; $\epsilon_r = 53.664$;
 $\rho = 1000$ kg/m³
Ambient Temperature : 23.5 °C ; Liquid Temperature : 22.6 °C

DASY5 Configuration:

- Probe: EX3DV4 - SN3857; ConvF(8.29, 8.29, 8.29); Calibrated: 2017.5.26;
- Sensor-Surface: 2mm (Mechanical Surface Detection)
- Electronics: DAE4 Sn1210; Calibrated: 2017.5.25
- Phantom: SAM1; Type: SAM; Serial: TP-1164
- Measurement SW: DASY52, Version 52.8 (8); SEMCAD X Version 14.6.10 (7331)

Ch1413/Area Scan (41x81x1): Interpolated grid: dx=1.500 mm, dy=1.500 mm
Maximum value of SAR (interpolated) = 8.22 W/kg

Ch1413/Zoom Scan (5x5x7)/Cube 0: Measurement grid: dx=8mm, dy=8mm, dz=5mm
Reference Value = 62.46 V/m; Power Drift = -0.11 dB
Peak SAR (extrapolated) = 9.47 W/kg
SAR(1 g) = 4.63 W/kg; SAR(10 g) = 2.04 W/kg
Maximum value of SAR (measured) = 7.06 W/kg



0 dB = 7.06 W/kg = 8.49 dBW/kg

64_WCDMA Band II_RMC 12.2Kbps_Bottom Side_0mm_Ch9262

Communication System: UID 0, UMTS (0); Frequency: 1852.4 MHz; Duty Cycle: 1:1
Medium: MSL_1900 Medium parameters used: $f = 1852.4$ MHz; $\sigma = 1.466$ S/m; $\epsilon_r = 54.999$;

$\rho = 1000$ kg/m³

Ambient Temperature : 23.3 °C ; Liquid Temperature : 22.8 °C

DASY5 Configuration:

- Probe: EX3DV4 - SN3857; ConvF(8.08, 8.08, 8.08); Calibrated: 2017.5.26;
- Sensor-Surface: 2mm (Mechanical Surface Detection)
- Electronics: DAE4 Sn1210; Calibrated: 2017.5.25
- Phantom: SAM1; Type: SAM; Serial: TP-1164
- Measurement SW: DASY52, Version 52.8 (8); SEMCAD X Version 14.6.10 (7331)

Ch9262/Area Scan (41x81x1): Interpolated grid: dx=1.500 mm, dy=1.500 mm

Maximum value of SAR (interpolated) = 7.48 W/kg

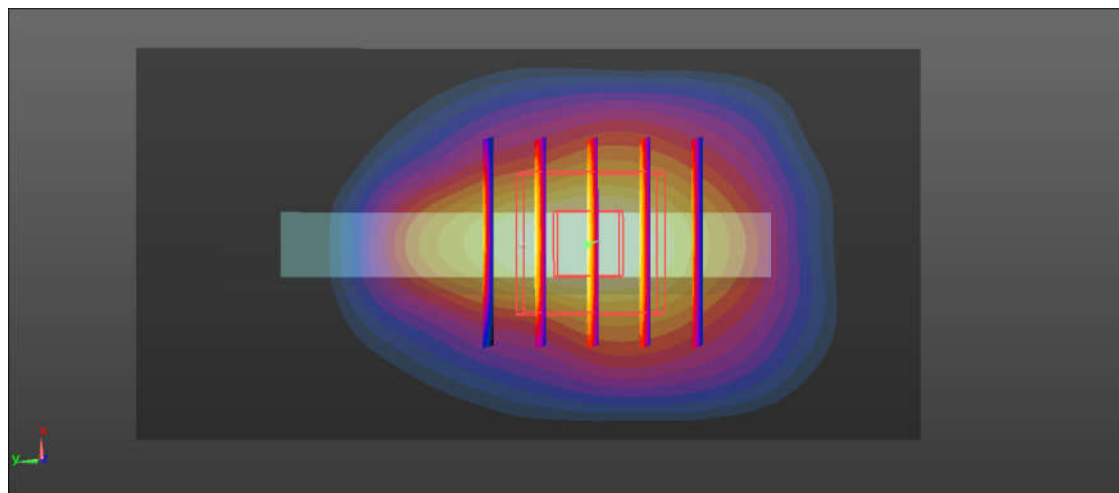
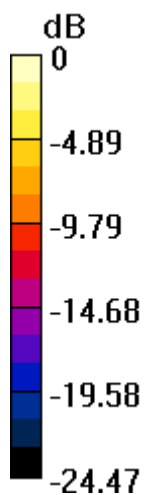
Ch9262/Zoom Scan (5x5x7)/Cube 0: Measurement grid: dx=8mm, dy=8mm, dz=5mm

Reference Value = 62.40 V/m; Power Drift = -0.15 dB

Peak SAR (extrapolated) = 9.05 W/kg

SAR(1 g) = 4.42 W/kg; SAR(10 g) = 1.93 W/kg

Maximum value of SAR (measured) = 6.83 W/kg



0 dB = 6.83 W/kg = 8.34 dBW/kg

65_CDMA2000 BC1_RTAP 153.6Kbps_Front_0mm_Ch1175

Communication System: UID 0, CDMA2000 (0); Frequency: 1908.75 MHz; Duty Cycle: 1:1
Medium: MSL_1900 Medium parameters used: $f = 1908.75$ MHz; $\sigma = 1.533$ S/m; $\epsilon_r = 54.803$;

$$\rho = 1000 \text{ kg/m}^3$$

Ambient Temperature : 23.3 °C ; Liquid Temperature : 22.8 °C

DASY5 Configuration:

- Probe: EX3DV4 - SN3857; ConvF(8.08, 8.08, 8.08); Calibrated: 2017.5.26;
- Sensor-Surface: 2mm (Mechanical Surface Detection)
- Electronics: DAE4 Sn1210; Calibrated: 2017.5.25
- Phantom: SAM1; Type: SAM; Serial: TP-1164
- Measurement SW: DASY52, Version 52.8 (8); SEMCAD X Version 14.6.10 (7331)

Ch1175/Area Scan (131x71x1): Interpolated grid: dx=1.500 mm, dy=1.500 mm

Maximum value of SAR (interpolated) = 11.8 W/kg

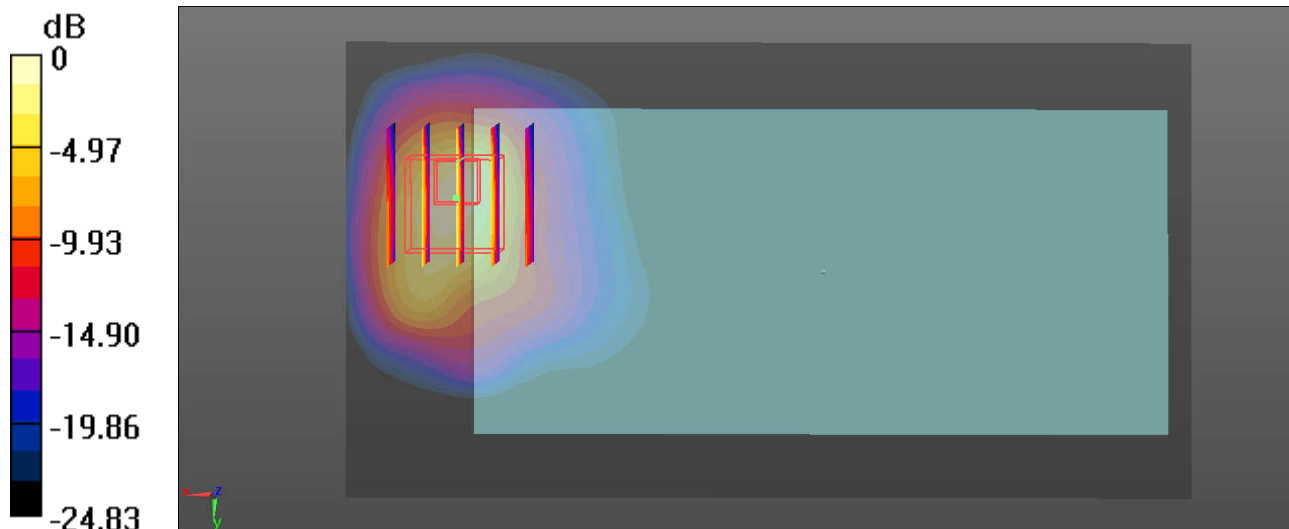
Ch1175/Zoom Scan (5x5x7)/Cube 0: Measurement grid: dx=8mm, dy=8mm, dz=5mm

Reference Value = 1.341 V/m; Power Drift = 0.01dB

Peak SAR (extrapolated) = 15.3 W/kg

SAR(1 g) = 5.89 W/kg; SAR(10 g) = 2.78 W/kg

Maximum value of SAR (measured) = 10.7 W/kg



0 dB = 10.7 W/kg = 10.29 dBW/kg

66_LTE Band 66_20M_QPSK_1RB_99Offset_Bottom Side_0mm_Ch132322

Communication System: UID 0, FDD_LTE (0); Frequency: 1745 MHz; Duty Cycle: 1:1
Medium: MSL_1750 Medium parameters used: $f = 1745$ MHz; $\sigma = 1.459$ S/m; $\epsilon_r = 53.607$;

$$\rho = 1000 \text{ kg/m}^3$$

Ambient Temperature : 23.5 °C ; Liquid Temperature : 22.6 °C

DASY5 Configuration:

- Probe: EX3DV4 - SN3857; ConvF(8.29, 8.29, 8.29); Calibrated: 2017.5.26;
- Sensor-Surface: 2mm (Mechanical Surface Detection)
- Electronics: DAE4 Sn1210; Calibrated: 2017.5.25
- Phantom: SAM1; Type: SAM; Serial: TP-1164
- Measurement SW: DASY52, Version 52.8 (8); SEMCAD X Version 14.6.10 (7331)

Ch132322/Area Scan (41x81x1): Interpolated grid: dx=1.500 mm, dy=1.500 mm

Maximum value of SAR (interpolated) = 14.6 W/kg

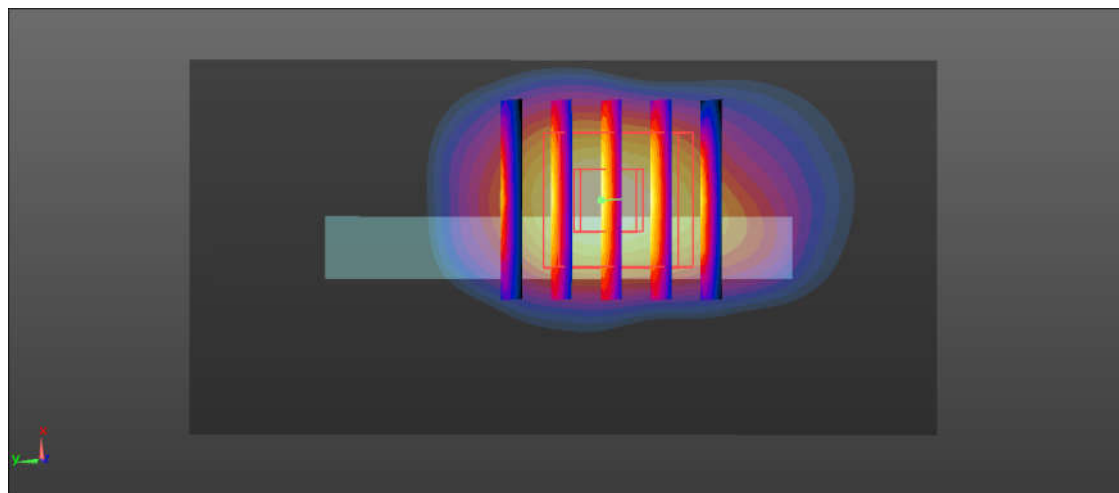
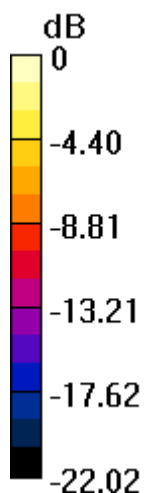
Ch132322/Zoom Scan (5x5x7)/Cube 0: Measurement grid: dx=8mm, dy=8mm, dz=5mm

Reference Value = 56.58 V/m; Power Drift = -0.09 dB

Peak SAR (extrapolated) = 16.0 W/kg

SAR(1 g) = 7.62 W/kg; SAR(10 g) = 3.35 W/kg

Maximum value of SAR (measured) = 12.3 W/kg



$$0 \text{ dB} = 12.3 \text{ W/kg} = 10.90 \text{ dBW/kg}$$

67_LTE Band 25_20M_QPSK_1RB_99Offset_Bottom Side_0mm_Ch26140

Communication System: UID 0, FDD_LTE (0); Frequency: 1860 MHz; Duty Cycle: 1:1
Medium: MSL_1900 Medium parameters used: $f = 1860$ MHz; $\sigma = 1.475$ S/m; $\epsilon_r = 54.973$;

$\rho = 1000$ kg/m³

Ambient Temperature : 23.3 °C ; Liquid Temperature : 22.8 °C

DASY5 Configuration:

- Probe: EX3DV4 - SN3857; ConvF(8.08, 8.08, 8.08); Calibrated: 2017.5.26;
- Sensor-Surface: 2mm (Mechanical Surface Detection)
- Electronics: DAE4 Sn1210; Calibrated: 2017.5.25
- Phantom: SAM1; Type: SAM; Serial: TP-1164
- Measurement SW: DASY52, Version 52.8 (8); SEMCAD X Version 14.6.10 (7331)

Ch26140/Area Scan (41x81x1): Interpolated grid: dx=1.500 mm, dy=1.500 mm

Maximum value of SAR (interpolated) = 13.4 W/kg

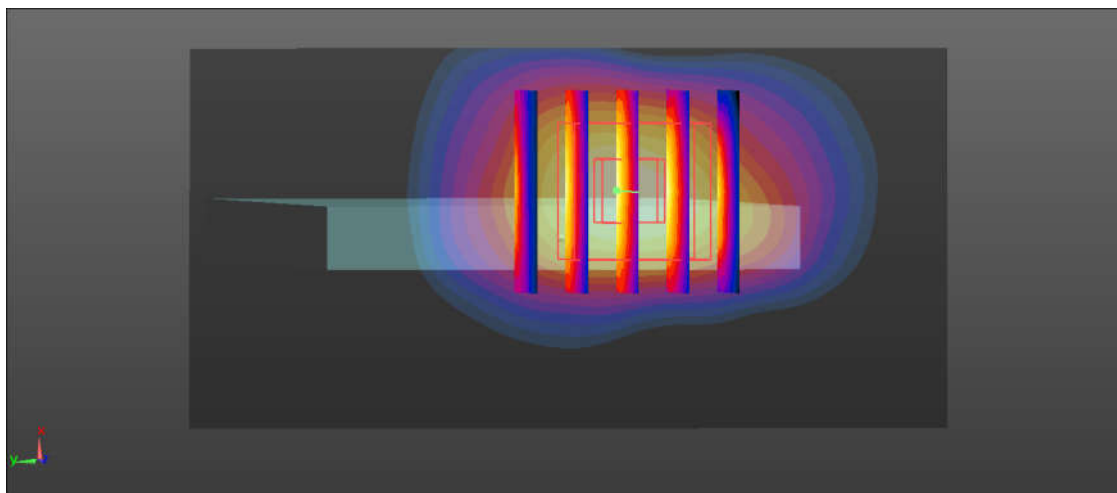
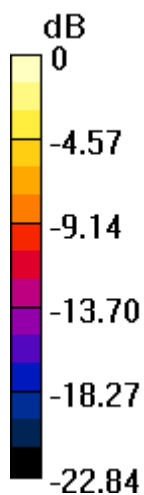
Ch26140/Zoom Scan (5x5x7)/Cube 0: Measurement grid: dx=8mm, dy=8mm, dz=5mm

Reference Value = 58.59 V/m; Power Drift = -0.06 dB

Peak SAR (extrapolated) = 16.1 W/kg

SAR(1 g) = 7.77 W/kg; SAR(10 g) = 3.41 W/kg

Maximum value of SAR (measured) = 12.0 W/kg



0 dB = 12.0 W/kg = 10.79 dBW/kg

68_LTE Band 30_10M_QPSK_1RB_0Offset_Front_0mm_Ch27710

Communication System: UID 0, FDD_LTE (0); Frequency: 2310 MHz; Duty Cycle: 1:1
Medium: MSL_2300 Medium parameters used: $f = 2310$ MHz; $\sigma = 1.827$ S/m; $\epsilon_r = 53.206$;

$$\rho = 1000 \text{ kg/m}^3$$

Ambient Temperature : 23.4 °C ; Liquid Temperature : 22.8 °C

DASY5 Configuration:

- Probe: EX3DV4 - SN3857; ConvF(7.87, 7.87, 7.87); Calibrated: 2017.5.26;
- Sensor-Surface: 2mm (Mechanical Surface Detection)
- Electronics: DAE4 Sn1210; Calibrated: 2017.5.25
- Phantom: SAM1; Type: SAM; Serial: TP-1164
- Measurement SW: DASY52, Version 52.8 (8); SEMCAD X Version 14.6.10 (7331)

Ch27710/Area Scan (151x81x1): Interpolated grid: $dx=1.200$ mm, $dy=1.200$ mm

Maximum value of SAR (interpolated) = 4.44 W/kg

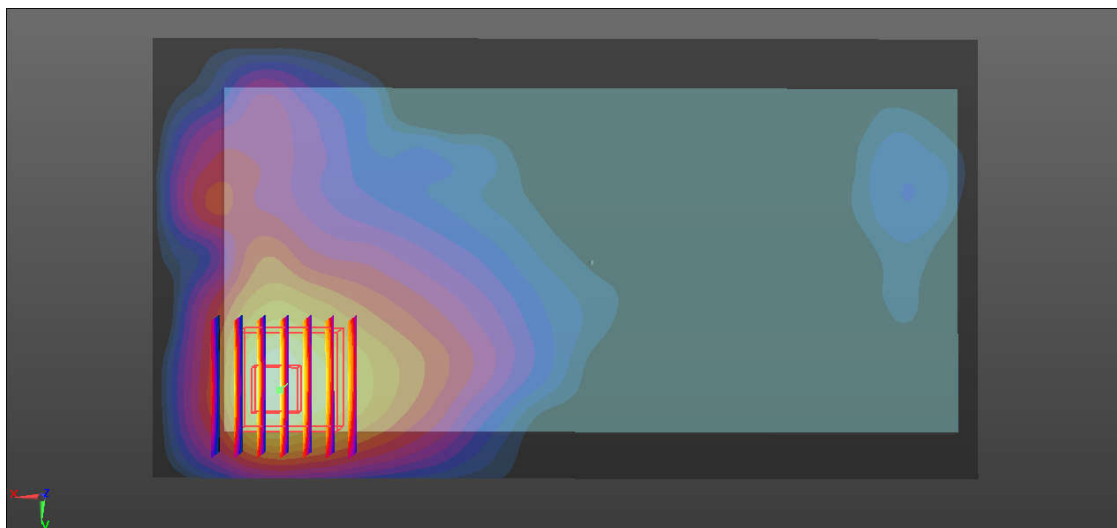
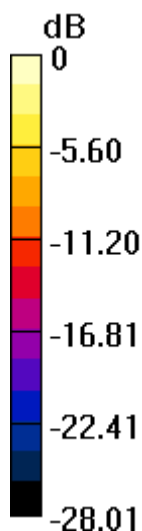
Ch27710/Zoom Scan (7x7x7)/Cube 0: Measurement grid: $dx=5$ mm, $dy=5$ mm, $dz=5$ mm

Reference Value = 1.931 V/m; Power Drift = 0.09 dB

Peak SAR (extrapolated) = 6.71 W/kg

SAR(1 g) = 2.67 W/kg; SAR(10 g) = 1.07 W/kg

Maximum value of SAR (measured) = 4.22 W/kg



0 dB = 4.22 W/kg = 6.25 dBW/kg

69_LTE Band 7_20M_QPSK_1RB_0Offset_Back_0mm_Ch21350

Communication System: UID 0, FDD_LTE (0); Frequency: 2560 MHz; Duty Cycle: 1:1
Medium: MSL_2600 Medium parameters used: $f = 2560$ MHz; $\sigma = 2.177$ S/m; $\epsilon_r = 52.309$;

$$\rho = 1000 \text{ kg/m}^3$$

Ambient Temperature : 23.5 °C ; Liquid Temperature : 22.6 °C

DASY5 Configuration:

- Probe: EX3DV4 - SN3857; ConvF(7.59, 7.59, 7.59); Calibrated: 2017.5.26;
- Sensor-Surface: 2mm (Mechanical Surface Detection)
- Electronics: DAE4 Sn1210; Calibrated: 2017.5.25
- Phantom: SAM1; Type: SAM; Serial: TP-1164
- Measurement SW: DASY52, Version 52.8 (8); SEMCAD X Version 14.6.10 (7331)

Ch21350/Area Scan (151x81x1): Interpolated grid: dx=1.200 mm, dy=1.200 mm

Maximum value of SAR (interpolated) = 3.77 W/kg

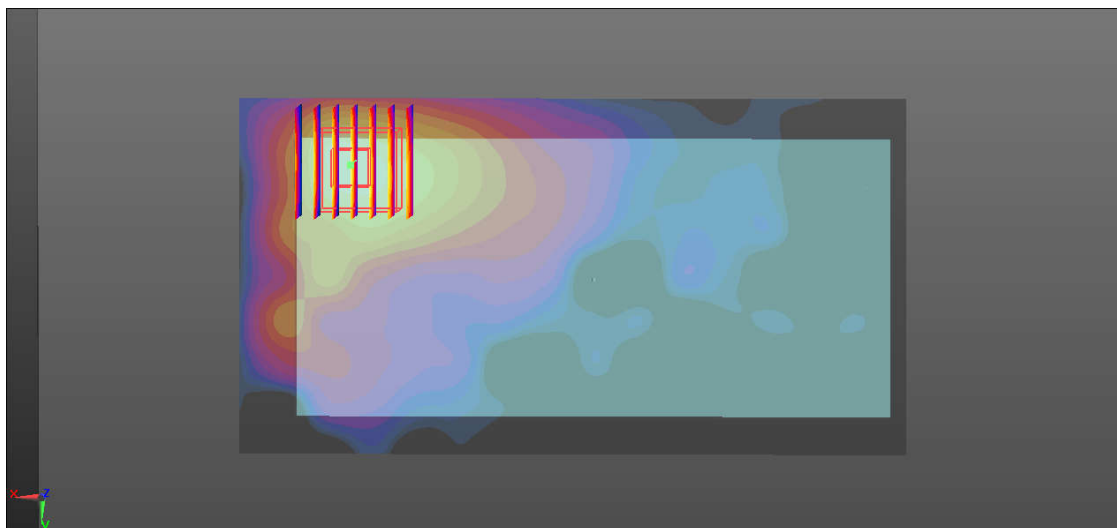
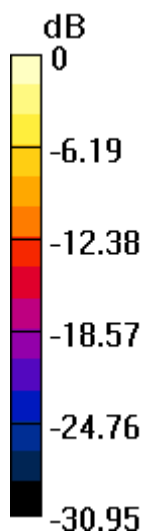
Ch21350/Zoom Scan (7x7x7)/Cube 0: Measurement grid: dx=5mm, dy=5mm, dz=5mm

Reference Value = 2.384 V/m; Power Drift = 0.04 dB

Peak SAR (extrapolated) = 5.39 W/kg

SAR(1 g) = 2.24 W/kg; SAR(10 g) = 0.932 W/kg

Maximum value of SAR (measured) = 3.85 W/kg



0 dB = 3.85 W/kg = 5.85 dBW/kg

70_LTE Band 41_20M_QPSK_1RB_99Offset_Front_0mm_Ch40620

Communication System: UID 0, TDD_LTE (0); Frequency: 2593 MHz; Duty Cycle: 1:1.59
Medium: MSL_2600 Medium parameters used: $f = 2593$ MHz; $\sigma = 2.227$ S/m; $\epsilon_r = 52.178$;

$\rho = 1000$ kg/m³

Ambient Temperature : 23.5 °C ; Liquid Temperature : 22.6 °C

DASY5 Configuration:

- Probe: EX3DV4 - SN3857; ConvF(7.59, 7.59, 7.59); Calibrated: 2017.5.26;
- Sensor-Surface: 2mm (Mechanical Surface Detection)
- Electronics: DAE4 Sn1210; Calibrated: 2017.5.25
- Phantom: SAM1; Type: SAM; Serial: TP-1164
- Measurement SW: DASY52, Version 52.8 (8); SEMCAD X Version 14.6.10 (7331)

Ch40620/Area Scan (151x81x1): Interpolated grid: dx=1.200 mm, dy=1.200 mm

Maximum value of SAR (interpolated) = 3.19 W/kg

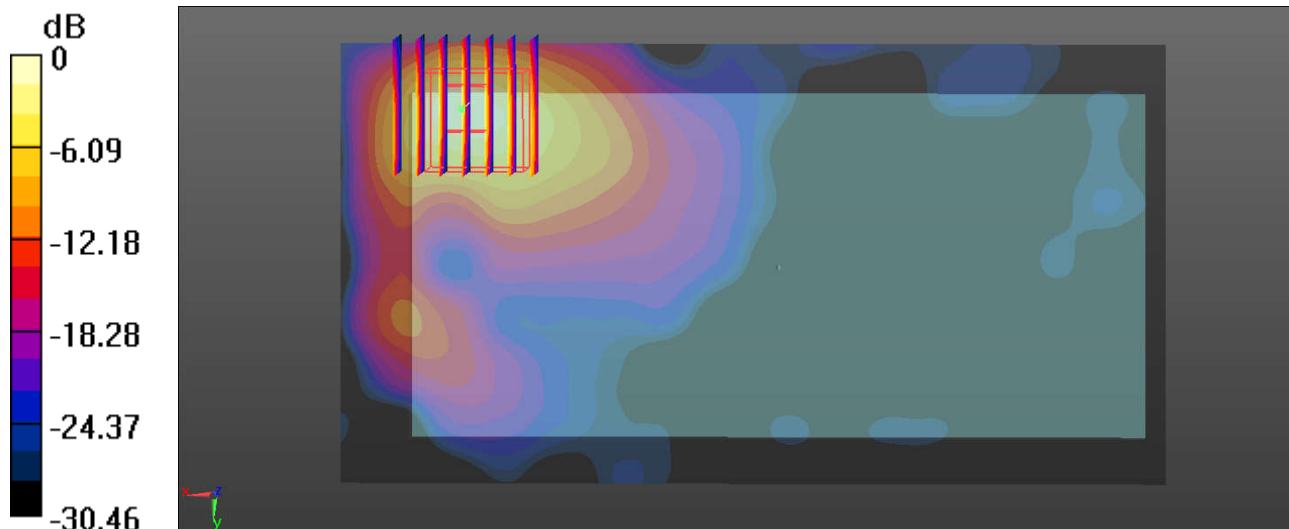
Ch40620/Zoom Scan (7x7x7)/Cube 0: Measurement grid: dx=5mm, dy=5mm, dz=5mm

Reference Value = 0.9730 V/m; Power Drift = 0.03 dB

Peak SAR (extrapolated) = 4.45 W/kg

SAR(1 g) = 1.51 W/kg; SAR(10 g) = 0.588 W/kg

Maximum value of SAR (measured) = 2.88 W/kg



0 dB = 2.88 W/kg = 4.59 dBW/kg

71_WLAN5.3GHz_802.11a 6Mbps_Front_0mm_Ch64

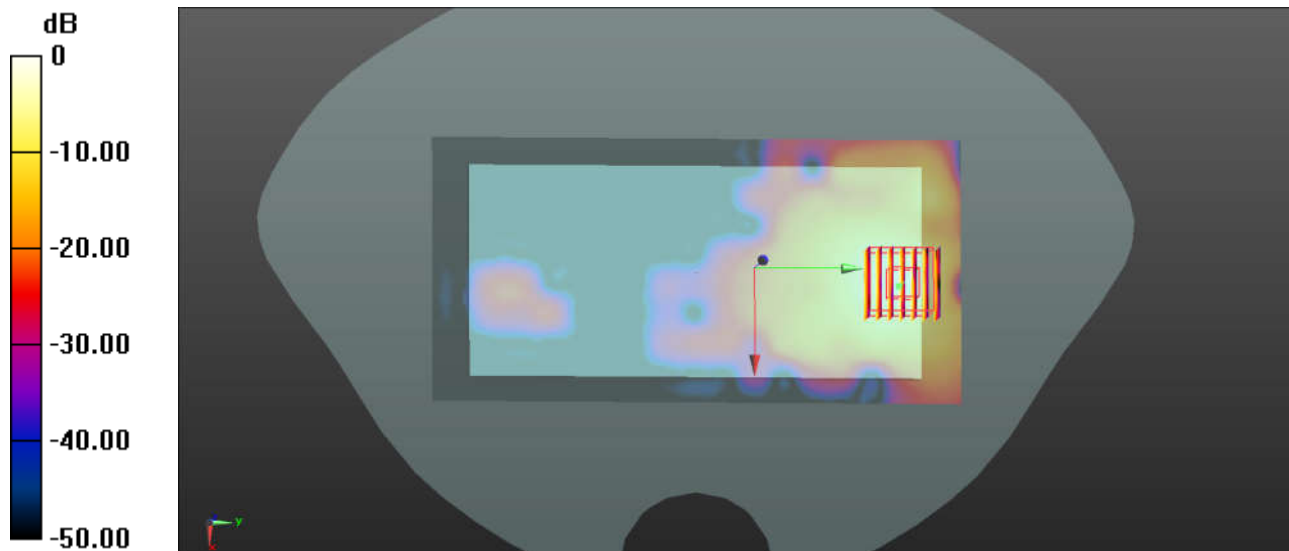
Communication System: UID 0, WIFI (0); Frequency: 5320 MHz; Duty Cycle: 1:1.137
Medium: MSL_5000 Medium parameters used: $f = 5320$ MHz; $\sigma = 5.59$ S/m; $\epsilon_r = 47.834$;
 $\rho = 1000$ kg/m³
Ambient Temperature : 23.3 °C ; Liquid Temperature : 22.7 °C

DASY5 Configuration:

- Probe: EX3DV4 - SN3898; ConvF(5.13, 5.13, 5.13); Calibrated: 2017.6.27;
- Sensor-Surface: 1.4mm (Mechanical Surface Detection)
- Electronics: DAE4 Sn1338; Calibrated: 2017.12.4
- Phantom: SAM2; Type: SAM; Serial: TP-1489
- Measurement SW: DASY52, Version 52.8 (8); SEMCAD X Version 14.6.10 (7331)

Ch64/Area Scan (91x181x1): Interpolated grid: dx=1.000 mm, dy=1.000 mm
Maximum value of SAR (interpolated) = 11.9 W/kg

Ch64/Zoom Scan (7x7x7)/Cube 0: Measurement grid: dx=4mm, dy=4mm, dz=1.4mm
Reference Value = 0.7890 V/m; Power Drift = 0.01 dB
Peak SAR (extrapolated) = 42.5 W/kg
SAR(1 g) = 5.14 W/kg; SAR(10 g) = 1.67 W/kg
Maximum value of SAR (measured) = 13.8 W/kg



0 dB = 13.8 W/kg = 11.40 dBW/kg

72_WLAN5.5GHz_802.11a 6Mbps_Front_0mm_Ch116

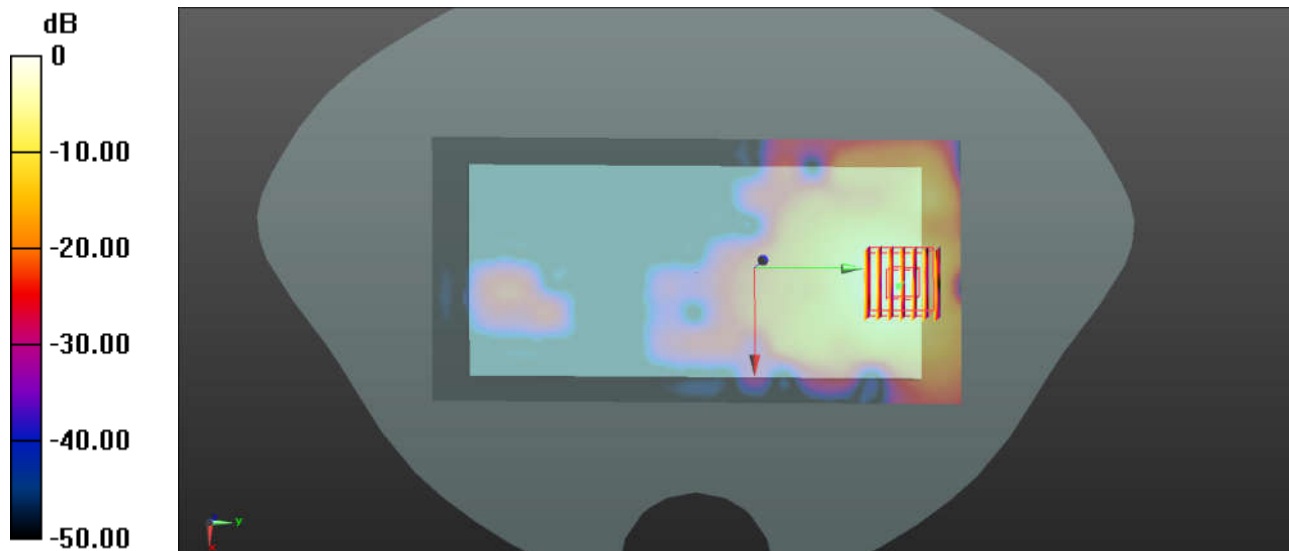
Communication System: UID 0, WIFI (0); Frequency: 5580 MHz; Duty Cycle: 1:1.137
Medium: MSL_5000 Medium parameters used: $f = 5580$ MHz; $\sigma = 5.59$ S/m; $\epsilon_r = 47.834$;
 $\rho = 1000$ kg/m³
Ambient Temperature : 23.3 °C ; Liquid Temperature : 22.7 °C

DASY5 Configuration:

- Probe: EX3DV4 - SN3898; ConvF(4.14, 4.14, 4.14); Calibrated: 2017.6.27;
- Sensor-Surface: 1.4mm (Mechanical Surface Detection)
- Electronics: DAE4 Sn1338; Calibrated: 2017.12.4
- Phantom: SAM2; Type: SAM; Serial: TP-1489
- Measurement SW: DASY52, Version 52.8 (8); SEMCAD X Version 14.6.10 (7331)

Ch116/Area Scan (91x181x1): Interpolated grid: dx=1.000 mm, dy=1.000 mm
Maximum value of SAR (interpolated) = 7.47 W/kg

Ch116/Zoom Scan (7x7x7)/Cube 0: Measurement grid: dx=4mm, dy=4mm, dz=1.4mm
Reference Value = 2.178 V/m; Power Drift = -0.02 dB
Peak SAR (extrapolated) = 23.0 W/kg
SAR(1 g) = 3.59 W/kg; SAR(10 g) = 1.27 W/kg
Maximum value of SAR (measured) = 11.5 W/kg



0 dB = 11.5 W/kg = 10.61 dBW/kg