

**1. External Photograph of EUT**

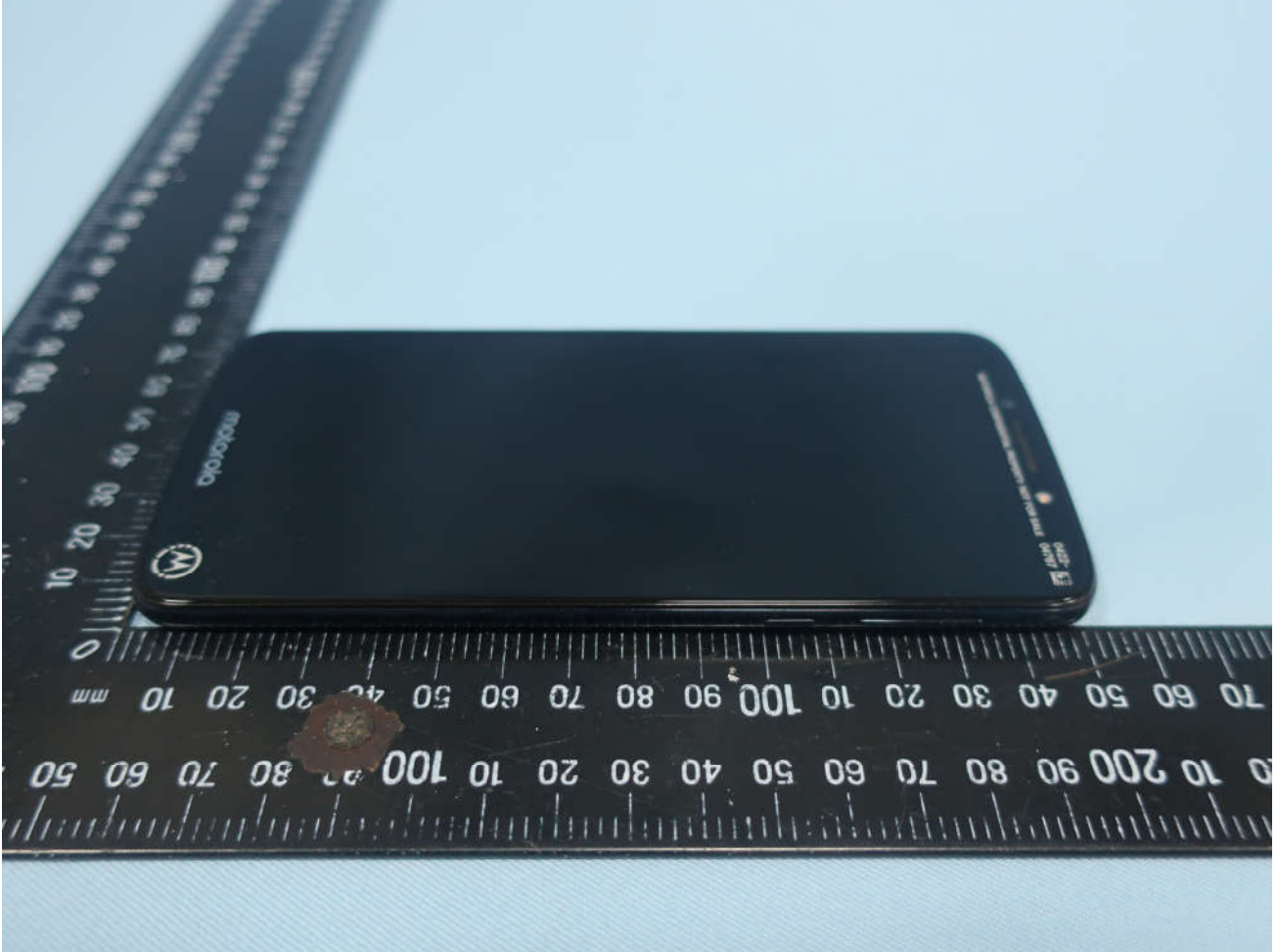
**Brand Name: Motorola; Model Name: XT1922-5, XT1922-4**



Brand Name: Motorola; Model Name: XT1922-5, XT1922-4

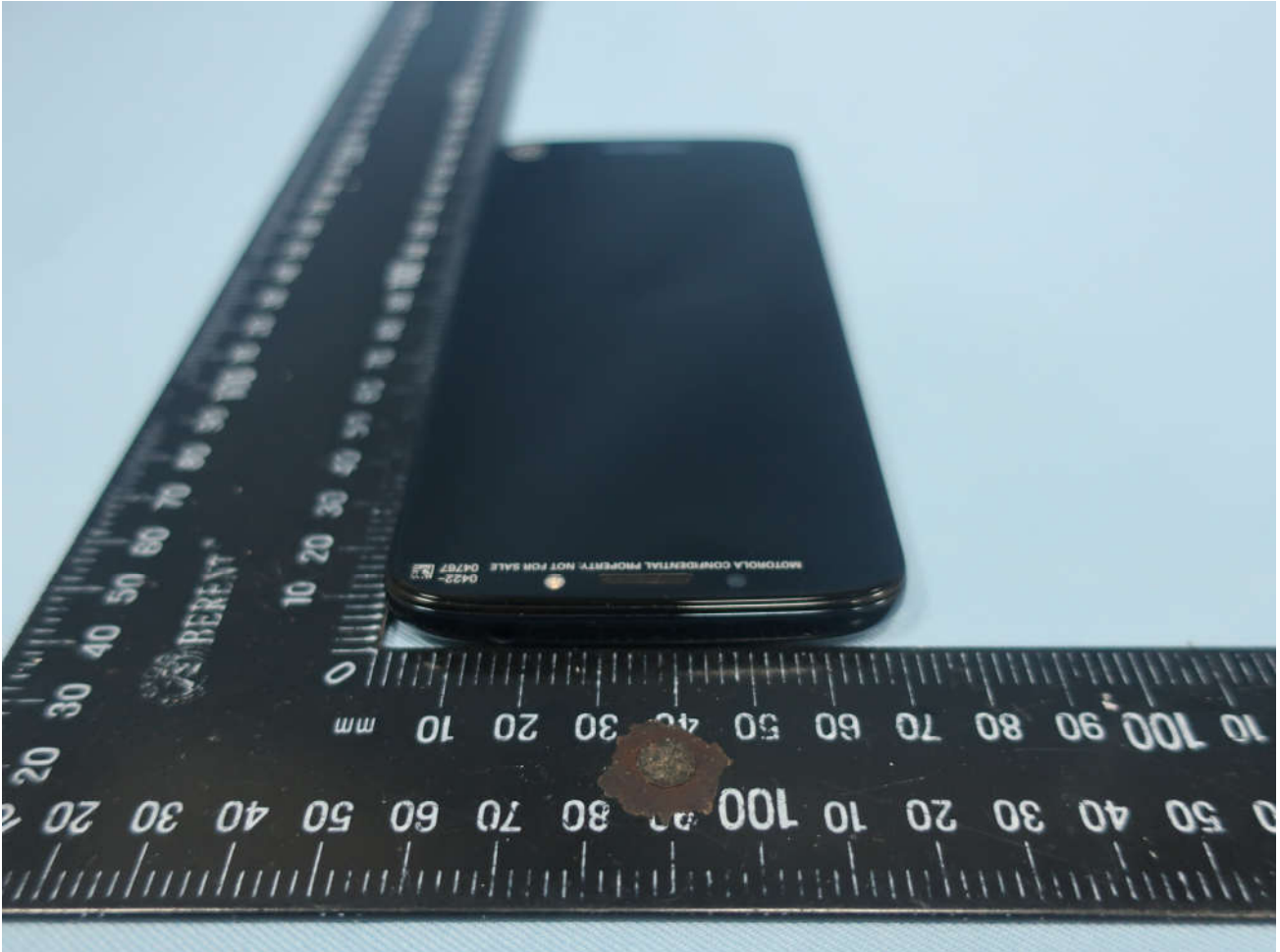


Brand Name: Motorola; Model Name: XT1922-5, XT1922-4

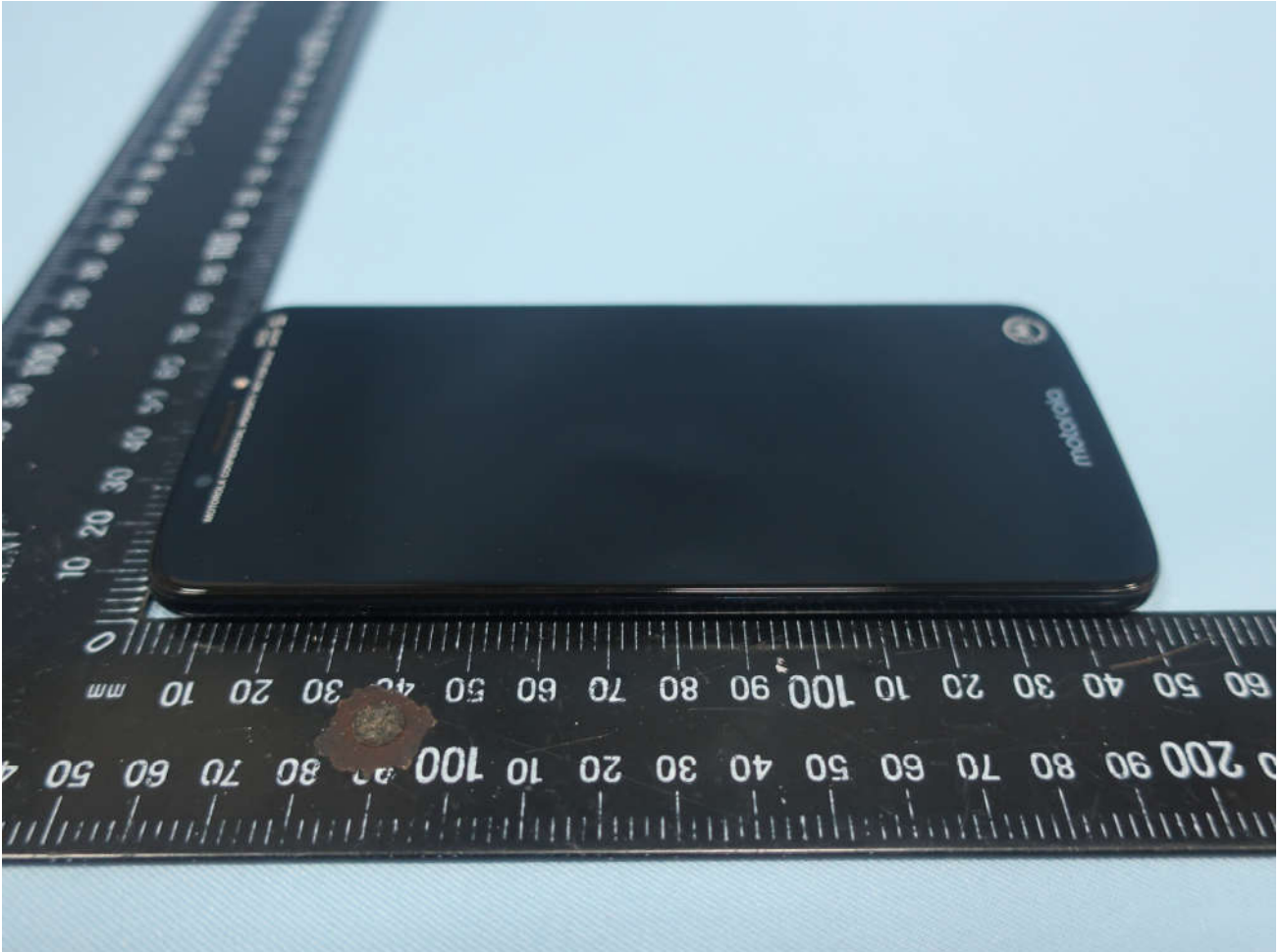




**Brand Name: Motorola; Model Name: XT1922-5, XT1922-4**



Brand Name: Motorola; Model Name: XT1922-5, XT1922-4



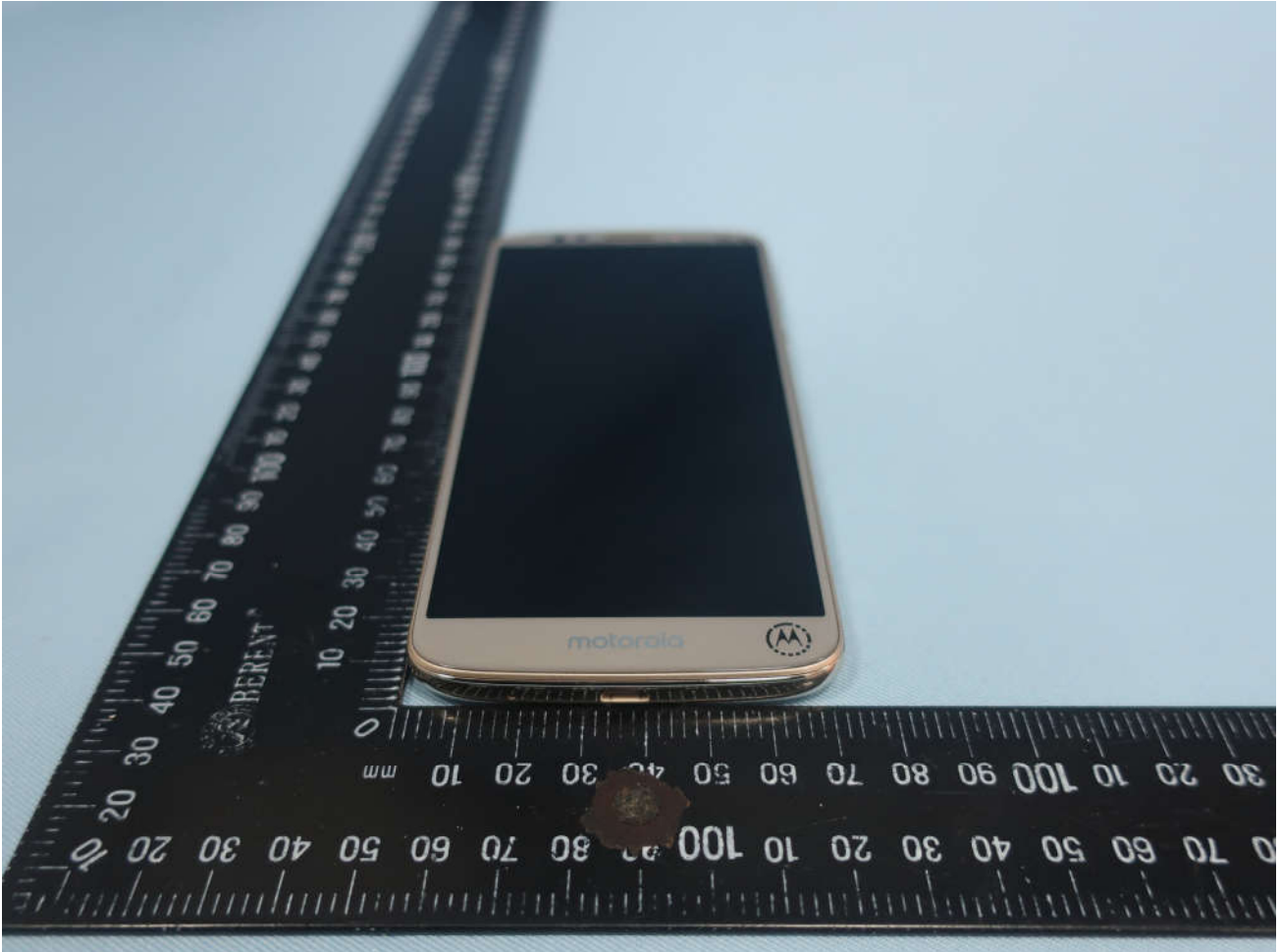
Brand Name: Motorola; Model Name: XT1922-5, XT1922-4



Brand Name: Motorola; Model Name: XT1922-5, XT1922-4

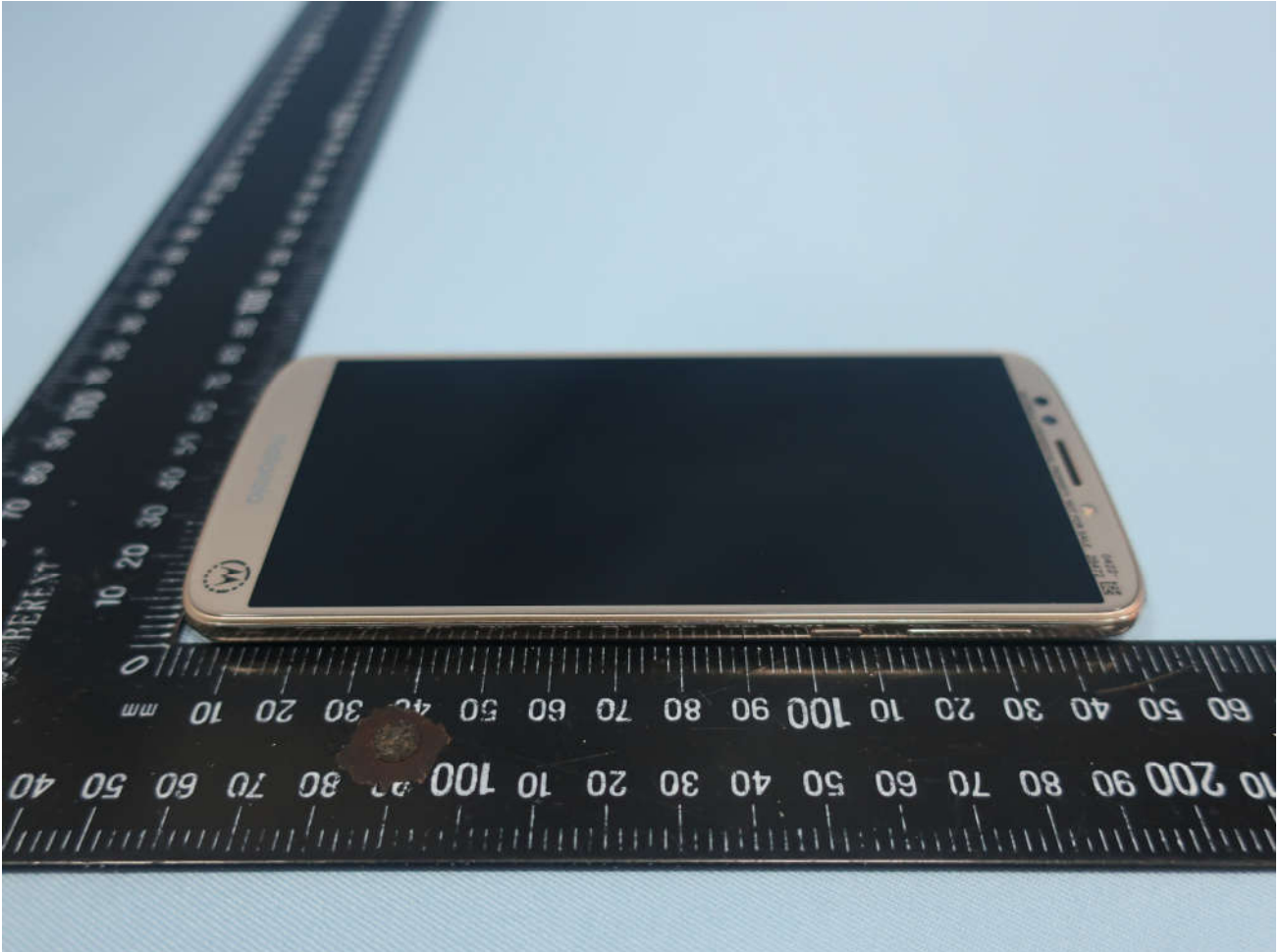


**Brand Name: Motorola; Model Name: XT1922-5, XT1922-4**





Brand Name: Motorola; Model Name: XT1922-5, XT1922-4

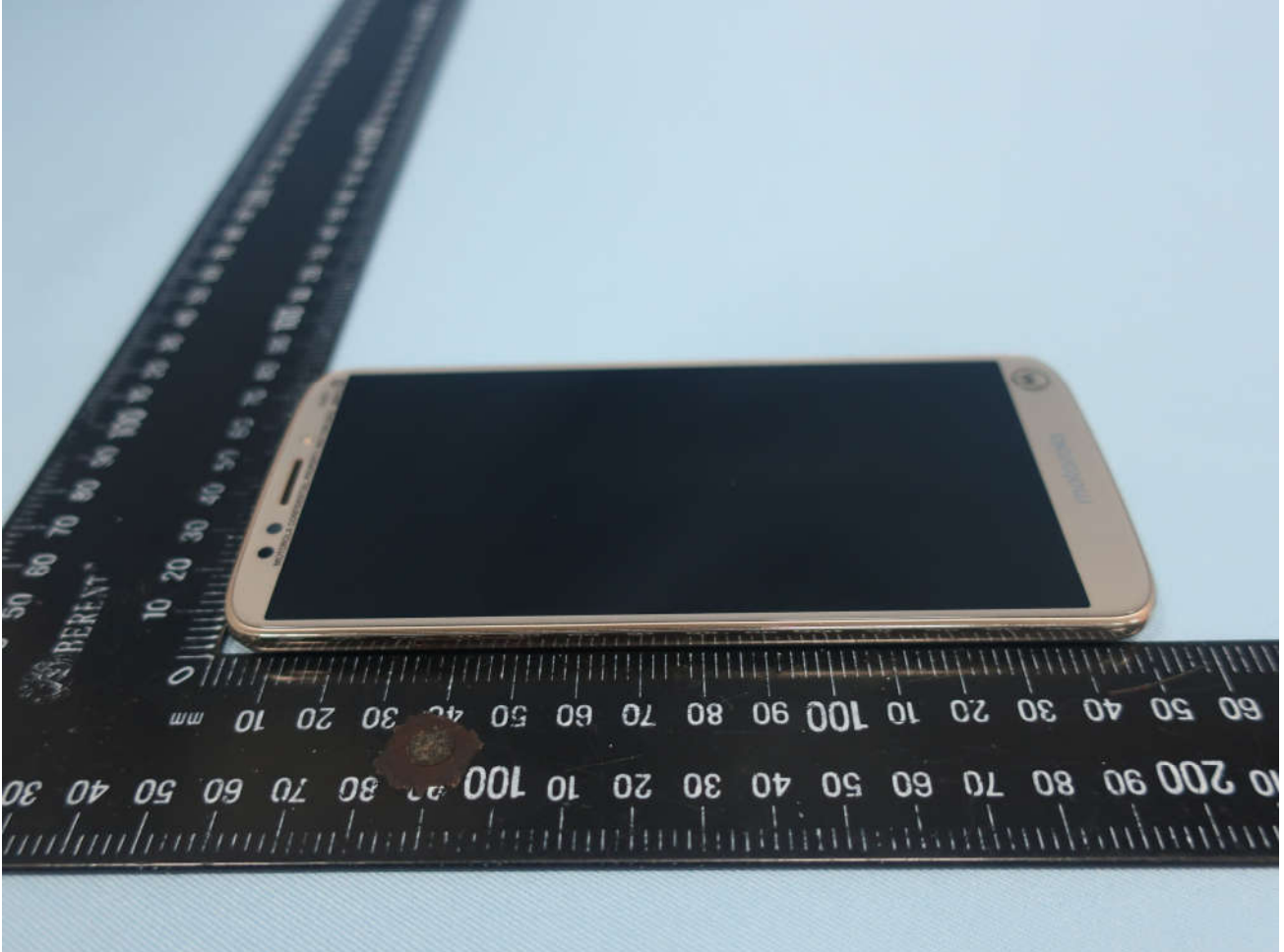




**Brand Name: Motorola; Model Name: XT1922-5, XT1922-4**

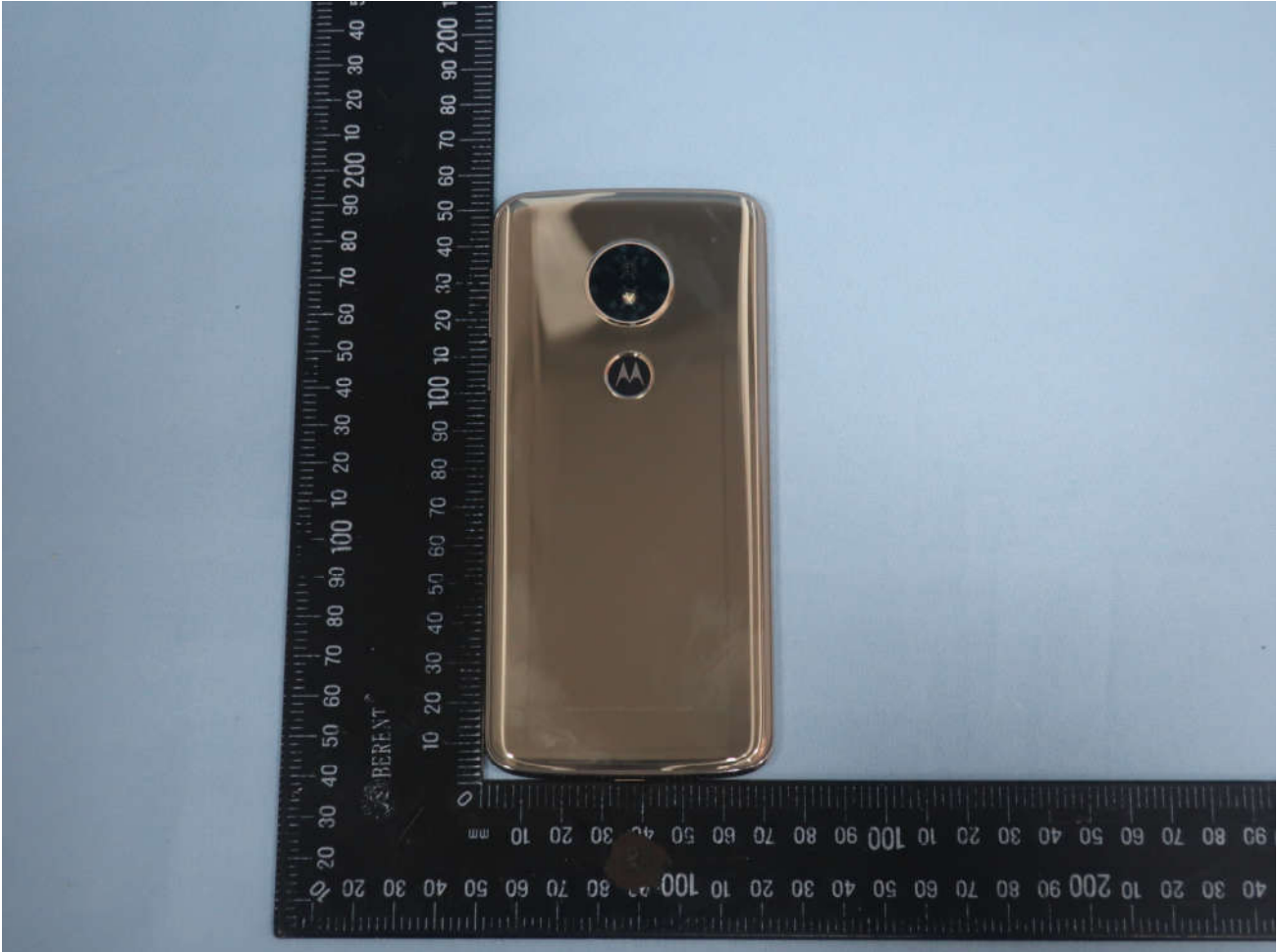


**Brand Name: Motorola; Model Name: XT1922-5, XT1922-4**





Brand Name: Motorola; Model Name: XT1922-5, XT1922-4





2. Photograph of Accessory

Brand Name: Motorola; Model Name: XT1922-5, XT1922-4

List of Accessory:

Specification of Accessory			
AC Adapter 1(US)	Brand Name	Motorola (Salom)	Model Name   SC-22 SPN5970A
	Power Rating	I/P: 100-240 Vac, 500mA, O/P: 5Vdc,3000mA or 9Vdc,1600mA or 12Vdc,1200mA	
AC Adapter 1(EU)	Brand Name	Motorola (Salom)	Model Name   SC-23 SPN5971A
	Power Rating	I/P: 100-240 Vac, 500mA, O/P: 5Vdc,3000mA or 9Vdc,1600mA or 12Vdc,1200mA	
AC Adapter 1(UK)	Brand Name	Motorola (Salom)	Model Name   SC-24 SPN5972A
	Power Rating	I/P: 100-240 Vac, 500mA, O/P: 5Vdc,3000mA or 9Vdc,1600mA or 12Vdc,1200mA	
AC Adapter 1(IN)	Brand Name	Motorola (Salom)	Model Name   SC-25 SPN5973A
	Power Rating	I/P: 100-240 Vac, 500mA, O/P: 5Vdc,3000mA or 9Vdc,1600mA or 12Vdc,1200mA	
AC Adapter 1(AU)	Brand Name	Motorola (Salom)	Model Name   SC-26 SPN5974A
	Power Rating	I/P: 100-240 Vac, 500mA, O/P: 5Vdc,3000mA or 9Vdc,1600mA or 12Vdc,1200mA	
AC Adapter 1(AR)	Brand Name	Motorola (Salom)	Model Name   SC-27 SPN5975A
	Power Rating	I/P: 100-240 Vac, 500mA, O/P: 5Vdc,3000mA or 9Vdc,1600mA or 12Vdc,1200mA	
AC Adapter 1(BR)	Brand Name	Motorola (Salom)	Model Name   SC-28 SPN5976A
	Power Rating	I/P: 100-240 Vac, 500mA, O/P: 5Vdc,3000mA or 9Vdc,1600mA or 12Vdc,1200mA	
AC Adapter 1(BR)	Brand Name	Motorola (Salom)	Model Name   SC-28 SPN5997A
	Power Rating	I/P: 100-240 Vac, 500mA, O/P: 5Vdc,3000mA or 9Vdc,1600mA or 12Vdc,1200mA	
AC Adapter 2(US)	Brand Name	Motorola (Chenyang)	Model Name   SC-22 SPN5993A
	Power Rating	I/P: 100-240 Vac, 500mA, O/P: 5Vdc,3000mA or 9Vdc,1600mA or 12Vdc,1200mA	
AC Adapter 2(EU)	Brand Name	Motorola (Chenyang)	Model Name   SC-23 SPN5989A
	Power Rating	I/P: 100-240 Vac, 500mA, O/P: 5Vdc,3000mA or 9Vdc,1600mA or 12Vdc,1200mA	
AC Adapter 2(UK)	Brand Name	Motorola (Chenyang)	Model Name   SC-24 SPN5990A
	Power Rating	I/P: 100-240 Vac, 500mA, O/P: 5Vdc,3000mA or 9Vdc,1600mA or 12Vdc,1200mA	
AC Adapter 2(IN)	Brand Name	Motorola (Chenyang)	Model Name   SC-25 SPN5991A
	Power Rating	I/P: 100-240 Vac, 500mA, O/P: 5Vdc,3000mA or 9Vdc,1600mA or 12Vdc,1200mA	



Brand Name: Motorola; Model Name: XT1922-5, XT1922-4

AC Adapter 2(AU)	Brand Name	Motorola (Chenyang)	Model Name	SC-26 SPN5988A
	Power Rating	I/P: 100-240 Vac, 500mA, O/P: 5Vdc,3000mA or 9Vdc,1600mA or 12Vdc,1200mA		
AC Adapter 2(AR)	Brand Name	Motorola (Chenyang)	Model Name	SC-27 SPN5992A
	Power Rating	I/P: 100-240 Vac, 500mA, O/P: 5Vdc,3000mA or 9Vdc,1600mA or 12Vdc,1200mA		
AC Adapter 3(BR)	Brand Name	Motorola (Cliptech)	Model Name	SC-28 SPN5998A
	Power Rating	I/P: 100-240 Vac, 500mA, O/P: 5Vdc,3000mA or 9Vdc,1600mA or 12Vdc,1200mA		
Battery	Brand Name	Lenovo (SCUD)	Model Name	BL270
	Power Rating	3.85/4.4Vdc,4000mAh	Type	Li-ion
Earphone	Brand Name	Motorola(NEW LEADER)	Model Name	NLD-EM307E-02SF
	Signal Line Type	1.2 meter, non-shielded cable, without ferrite core		
USB Cable	Brand Name	Motorola (Saibao)	Model Name	SLQ-A077A
	Signal Line Type	1.0 meter, shielded cable, without ferrite core		

Remark:

1. For accessories equipped with this EUT, please refer to the following photos.
2. There are three kinds of adapter, for adapter 1 and adapter 2 that only for different plugs but the others are the same including circuit design, PCB board, structure and all components. For FCC test, we only evaluate adapter1/2 with the US plug and adapter 3 to test.

**Brand Name: Motorola; Model Name: XT1922-5, XT1922-4**



Brand Name: Motorola; Model Name: XT1922-5, XT1922-4

**AC Adapter 1 (US)**





Brand Name: Motorola; Model Name: XT1922-5, XT1922-4

**AC Adapter 1 (EU)**



Brand Name: Motorola; Model Name: XT1922-5, XT1922-4

AC Adapter 1 (UK)



Brand Name: Motorola; Model Name: XT1922-5, XT1922-4

AC Adapter 1 (IN)



Brand Name: Motorola; Model Name: XT1922-5, XT1922-4

AC Adapter 1 (AU)



Brand Name: Motorola; Model Name: XT1922-5, XT1922-4

AC Adapter 1 (AR)



Brand Name: Motorola; Model Name: XT1922-5, XT1922-4

AC Adapter 1 (BR)



**Brand Name: Motorola; Model Name: XT1922-5, XT1922-4**

**AC Adapter 1 (BR)**



Brand Name: Motorola; Model Name: XT1922-5, XT1922-4

**AC Adapter 2 (US)**





Brand Name: Motorola; Model Name: XT1922-5, XT1922-4

**AC Adapter 2 (EU)**



Brand Name: Motorola; Model Name: XT1922-5, XT1922-4

AC Adapter 2 (UK)



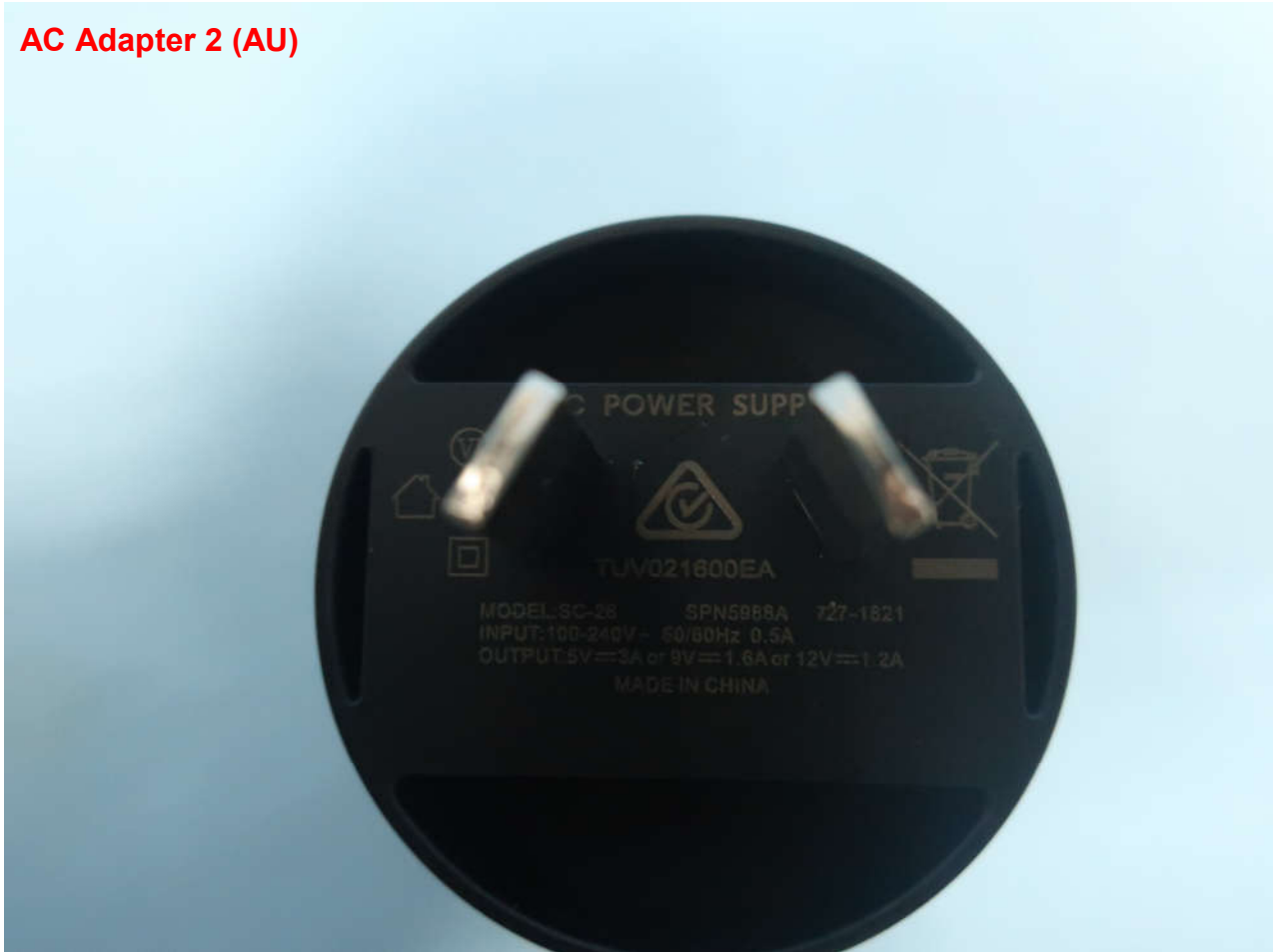
Brand Name: Motorola; Model Name: XT1922-5, XT1922-4

AC Adapter 2 (IN)



Brand Name: Motorola; Model Name: XT1922-5, XT1922-4

**AC Adapter 2 (AU)**



Brand Name: Motorola; Model Name: XT1922-5, XT1922-4

**AC Adapter 2 (AR)**

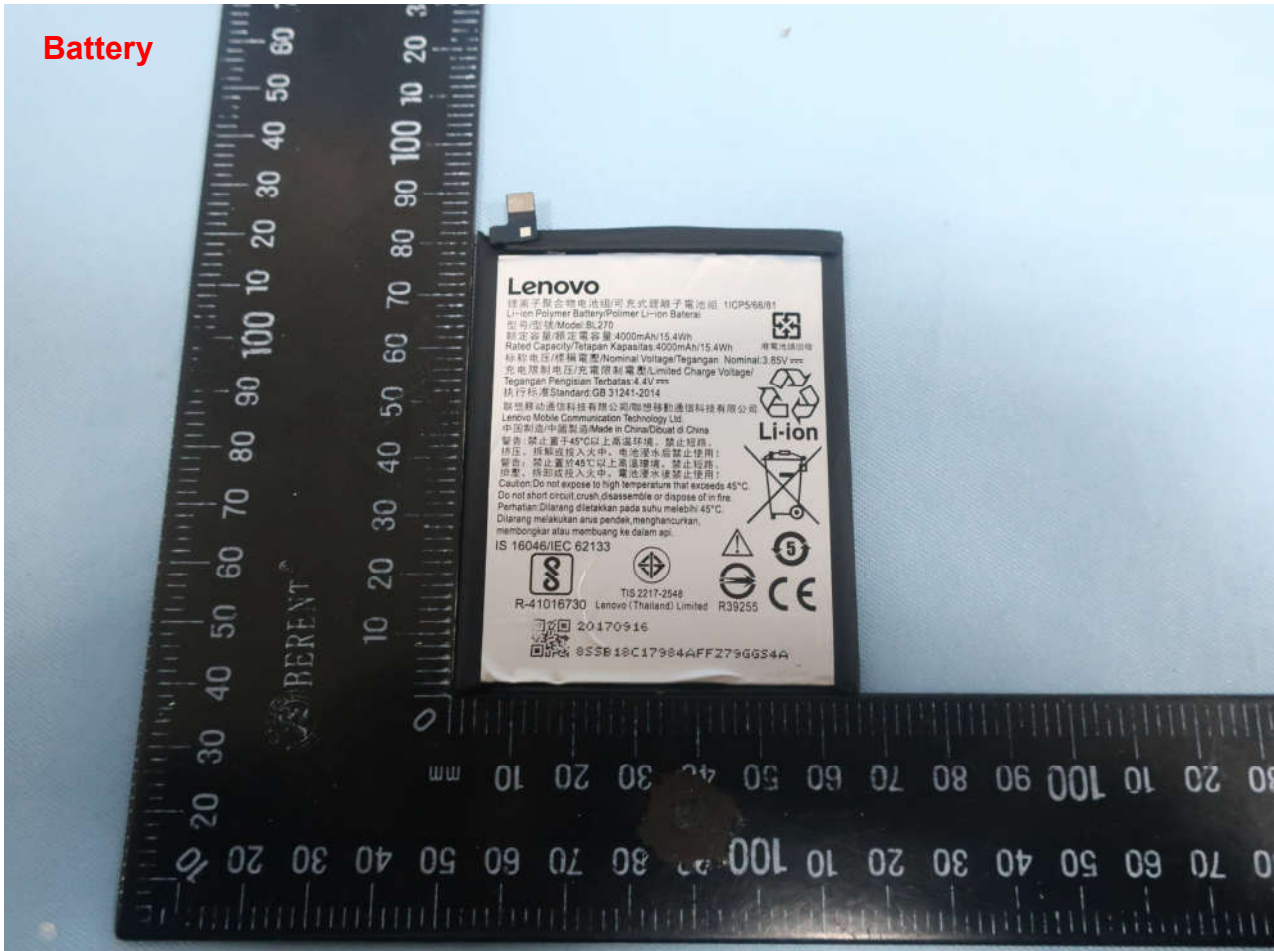


Brand Name: Motorola; Model Name: XT1922-5, XT1922-4

**AC Adapter 3 (BR)**



Brand Name: Motorola; Model Name: XT1922-5, XT1922-4





Brand Name: Motorola; Model Name: XT1922-5, XT1922-4

